



HAL
open science

Towards an in-depth characterization of Symbiodiniaceae in tropical giant clams via metabarcoding of pooled multi-gene amplicons

Xavier Pochon, Patricia Wecker, Michael Stat, Veronique Berteaux-Lecellier,
Gael Lecellier

► To cite this version:

Xavier Pochon, Patricia Wecker, Michael Stat, Veronique Berteaux-Lecellier, Gael Lecellier. Towards an in-depth characterization of Symbiodiniaceae in tropical giant clams via metabarcoding of pooled multi-gene amplicons. PeerJ, 2019, 7, pp.e6898. 10.7717/peerj.6898 . hal-02350434

HAL Id: hal-02350434

<https://hal.science/hal-02350434>

Submitted on 6 Nov 2019

HAL is a multi-disciplinary open access archive for the deposit and dissemination of scientific research documents, whether they are published or not. The documents may come from teaching and research institutions in France or abroad, or from public or private research centers.

L'archive ouverte pluridisciplinaire **HAL**, est destinée au dépôt et à la diffusion de documents scientifiques de niveau recherche, publiés ou non, émanant des établissements d'enseignement et de recherche français ou étrangers, des laboratoires publics ou privés.

Towards an in-depth characterization of Symbiodiniaceae in tropical giant clams via metabarcoding of pooled multi-gene amplicons

Xavier Pochon^{1,2}, Patricia Wecker³, Michael Stat⁴,
Véronique Berteaux-Lecellier⁵ and Gaël Lecellier^{5,6}

¹ Coastal & Freshwater Group, Cawthron Institute, Nelson, New Zealand

² Institute of Marine Science, University of Auckland, Auckland, New Zealand

³ Independent consultant, Montreuil sur mer, France

⁴ School of Environmental and Life Sciences, The University of Newcastle, Callaghan, NSW, Australia

⁵ UMR250/9220 ENTROPIE, IRD-CNRS-UR, LabEx CORAIL, Nouméa, New-Caledonia

⁶ Université Paris-Saclay, UVSQ, Versailles Cedex, France

ABSTRACT

High-throughput sequencing is revolutionizing our ability to comprehensively characterize free-living and symbiotic Symbiodiniaceae, a diverse dinoflagellate group that plays a critical role in coral reef ecosystems. Most studies however, focus on a single marker for metabarcoding Symbiodiniaceae, potentially missing important ecological traits that a combination of markers may capture. In this proof-of-concept study, we used a small set of symbiotic giant clam (*Tridacna maxima*) samples obtained from nine French Polynesian locations and tested a dual-index sequence library preparation method that pools and simultaneously sequences multiple Symbiodiniaceae gene amplicons per sample for in-depth biodiversity assessments. The rationale for this approach was to allow the metabarcoding of multiple genes without extra costs associated with additional single amplicon dual indexing and library preparations. Our results showed that the technique effectively recovered very similar proportions of sequence reads and dominant Symbiodiniaceae clades among the three pooled gene amplicons investigated per sample, and captured varying levels of phylogenetic resolution enabling a more comprehensive assessment of the diversity present. The pooled Symbiodiniaceae multi-gene metabarcoding approach described here is readily scalable, offering considerable analytical cost savings while providing sufficient phylogenetic information and sequence coverage.

Submitted 14 January 2019

Accepted 2 April 2019

Published 13 May 2019

Corresponding author

Xavier Pochon,

xavier.pochon@cawthron.org.nz

Academic editor

Anastazia Banaszak

Additional Information and
Declarations can be found on
page 13

DOI 10.7717/peerj.6898

© Copyright

2019 Pochon et al.

Distributed under

Creative Commons CC-BY 4.0

OPEN ACCESS

Subjects Biodiversity, Biotechnology, Ecology, Marine Biology, Molecular Biology

Keywords High-throughput sequencing, South Pacific Ocean, Symbiosis, Marine ecology, *Tridacna*, Biodiversity, Multi-gene metabarcoding

INTRODUCTION

Giant clams (Family Tridacnidae) play important roles in reef systems, acting as shelter for a number of organisms (*Cabaitan, Gomez & Aliño, 2008; Mercier & Hamel, 1996*), contributing to primary production through their symbiosis with dinoflagellates

(*Neo et al., 2015*), and as effective filter feeders (*Klumpp & Griffiths, 1994*). Due to their large size, relative abundance and longevity, giant clams can be considered as centennial barometers of reef health (*Knop, 1996; Romanek & Grossman, 1989; Watanabe et al., 2004*). Unfortunately, as a highly prized resource throughout much of their Indo-Pacific range, the family Tridacnidae also contains some of the most endangered species due to overfishing, that is, wild stock depletion and local extinctions (*IUCN Red List, 2018*). This collapse is compounded with habitat degradation (*Bin Othman, Goh & Todd, 2010*).

Giant clams on shallow reefs allow for the establishment of a diverse in-situ reservoir of interacting fungal, bacterial, and micro-algal communities (*Baker, 2003; Neo et al., 2015*). Importantly, they form obligatory symbioses with, and release living cells of, Symbiodiniaceae sensu *LaJeunesse et al. (2018)*, a group of dinoflagellates that are critical for the survival of a myriad of tropical invertebrates, including corals. Despite these dynamic interactions, very little is known about the extent of symbiont diversity within giant clams and the potential exchange with other reef invertebrates engaged in similar symbiotic associations (e.g., nudibranchs and corals; *Wecker et al., 2015*). Unlike traditional molecular techniques (e.g., Polymerase chain reactions (PCR)-based fingerprinting methods and Sanger sequencing) that have been extensively used to shed light on Symbiodiniaceae diversity in reef organisms (reviewed in *Coffroth & Santos, 2005; Stat, Carter & Hoegh-Guldberg, 2006*), recent advances in high-throughput sequencing (HTS) technologies now enable unprecedented sequencing depth for global biodiversity assessments of symbiotic and free-living communities of Symbiodiniaceae (*Boulotte et al., 2016; Cunning et al., 2015; Edmunds et al., 2014; Hume et al., 2018; Shinzato et al., 2018; Thomas et al., 2014*). Nevertheless, such studies usually focus on metabarcoding analyses of single molecular markers in isolation, in particular the Internal Transcribed Spacer 2 (ITS2) marker (but see *Smith, Ketchum & Burt, 2017; Thomas et al., 2014*), potentially overlooking intrinsic phylogenetic differences known to occur between distinct Symbiodiniaceae genes (*Pochon et al., 2012; Pochon, Putnam & Gates, 2014*).

A variety of HTS library preparation methods exist for metabarcoding biological samples using IlluminaTM (San Diego, CA, USA) sequencing platforms, including the use of fusion tag primers (*Elbrecht & Steinke, 2018; Stat et al., 2017*), the ligation of IlluminaTM adapters using TruSeqTM PCR-free kits (*Rhodes, Beale & Fisher, 2014*), and the addition of IlluminaTM adapters via dual-index sequencing (*Kozich et al., 2013*). The latter technique requires two distinct rounds of PCR analyses. The first round uses gene-specific primers modified to include IlluminaTM adapter tails. Following purification of the PCR products, a second short round of PCR is applied using NexteraTM library construction kits that involve individual primer sets containing the IlluminaTM adapter and sequencing primer sequence. This second PCR step is usually performed on individual PCR amplicon products before the pooling and sequencing of multiple samples so that demultiplexing of sequence data results in appropriate identification of input samples. For laboratories that use the services of external genomic facilities for the preparation of their dual-index libraries, an increased sample set usually correlates positively with the analytical cost due, in part, to the use of additional NexteraTM indexed primers. Therefore, one solution for reducing costs when performing multi-gene analyses of individual samples, is to

pool the PCR amplicon products prior to the second PCR step, followed by the sequencing and gene-specific demultiplexing per sample.

Here, we conducted a preliminary assessment of a dual-index multi-gene metabarcoding approach via the pooling and side-by-side HTS analysis of PCR amplicons from three commonly employed nuclear and chloroplastic Symbiodiniaceae markers. The ability to combine multiple gene amplicon targets per sample offers considerable analytical cost savings while providing sufficient phylogenetic information and sequence coverage. This study describes a multi-marker metabarcoding approach using giant clam *Tridacna maxima* as a model and discusses future applications for improving analyses of coral reef holobionts.

MATERIAL AND METHODS

Sample collection and DNA extraction

For this study, 12 DNA extracts from *T. maxima* biopsies, previously collected between February 1st 2011 and November 2nd 2013 from nine islands in the French Polynesian Archipelagos (Fig. 1; Table S1) were used (Dubousquet et al., 2018).

Preparation of pooled amplicons high-throughput sequencing libraries

Three sets of Symbiodiniaceae-specific primers with Illumina™ adapter tails (Table S2) were used to amplify each sample (S141–S152; Table 1) in separate PCR. Three markers were amplified: (i) *ITS2* of the nuclear ribosomal RNA array using primers ITSD_illu and ITS2rev2_illu, (ii) the D1–D2 region of the 28S large subunit (*LSU*) nuclear ribosomal RNA gene using the newly designed primers LSU1F_illu and LSU1R_illu, and (iii) the hyper-variable region of the chloroplast 23S (*23S*) ribosomal RNA gene using primers 23SHyperUP_illu and 23SHyperDN_illu (Manning & Gates, 2008; Pochon et al., 2010). The new forward and reverse *LSU* primers were designed within the conserved areas flanking the D1–D2 region of a previously published *LSU* sequence alignment (Pochon et al., 2012; Fig. S1), containing 93 sequences of Symbiodiniaceae (with representatives from all nine existing clades), as well as eight sequences from three dinoflagellate species represented by *Gymnodinium simplex*, *Pelagodinium beii*, and *Polarella glacialis*. Primers were designed to be “dinoflagellate-specific” using MacVector v11.0.2 (MacVector Inc., Cary, NC, USA), avoiding cladal bias and minimizing self/duplex hybridization and internal secondary structure problems (Fig. S1).

Polymerase chain reactions were performed for each sample and for each gene separately in 50 µL volumes, with the reaction mixture containing 45 µL of Platinum PCR SuperMix High Fidelity (Life Technologies, Carlsbad, CA, USA), 10 µM of each primer, and 10–20 ng of template DNA. In order to maximize specificity to Symbiodiniaceae, a touchdown PCR protocol was used for each reaction as follows: (i) 95 °C for 10 min; (ii) 25 cycles of 94 °C for 30 s, 65 °C for 30 s (decreasing the annealing temperature 0.5 °C for every cycle after cycle (1), and 72 °C for 1 min; (iii) 14 cycles of 94 °C for 30 s, 52 °C for 30 s and 72 °C for 1 min; and (iv) a final extension of 72 °C for 10 min. Amplicons of the correct size (estimated visually via gel electrophoresis) were purified using Agencourt AMPure XP PCR Purification beads following the manufacturers' instructions.

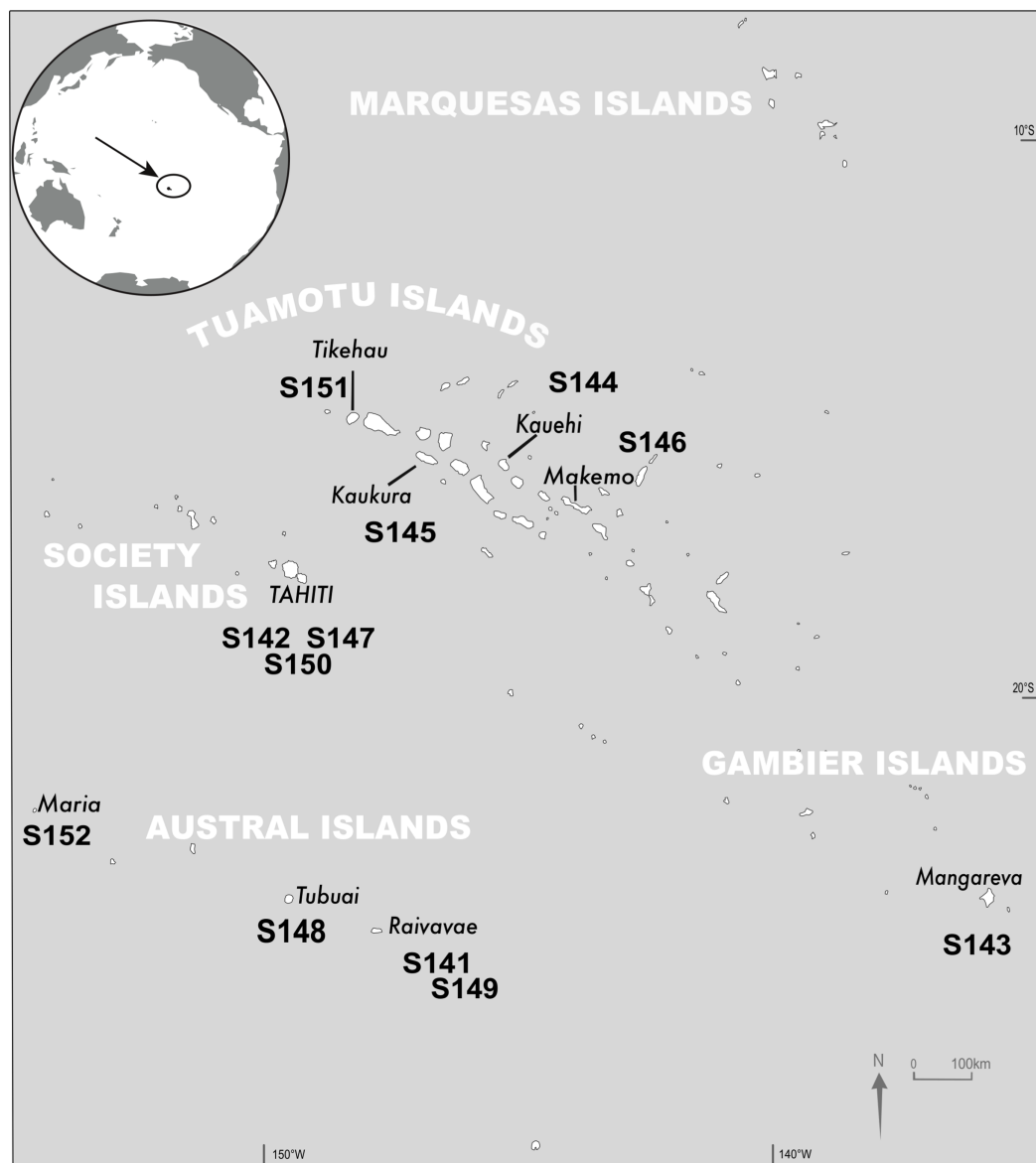


Figure 1 Sampling sites. Location and sample identification for the 12 *Tridacna maxima* samples investigated in this study (credit to R. Canavesio). [Full-size !\[\]\(b345a1c4255362eec3746050dd71ccac_img.jpg\) DOI: 10.7717/peerj.6898/fig-1](https://doi.org/10.7717/peerj.6898/fig-1)

In order to sequence the three gene amplicons per sample collectively using HTS, individual purified products for each marker originating from the same giant clam were pooled together to enable the attachment of the same Nextera™ index (i.e., 12 samples). This was achieved by quantifying the amplicons using a Qubit Fluorometer 2.0 (Life Technologies, Carlsbad, CA, USA), diluting to one ng/μL using Milli-Q water and mixing five μL of each gene amplicon from the same giant clam together. To assess the levels of cross-contamination between samples potentially arising during the library indexing step, nine unmixed amplicon products (i.e., *ITS2*, *LSU*, and *23S* amplicons from three haphazardly selected giant clams; samples S141–S143; [Table 1](#)), each with their own unique index to be added, were also prepared.

Table 1 DNA sequence counts following demultiplexing of “Pooled” and “Controls” samples.

Sample ID	Source reads	Filtered reads	23S reads	ITS2 reads	LSU reads
Pooled					
S141	75,731	53,654	22,072	17,813	13,435
S142	89,975	65,312	26,504	24,395	14,040
S143	78,009	48,881	21,061	10,256	17,321
S144	1,72,319	1,26,860	48,941	39,131	38,128
S145	1,47,293	1,04,743	31,048	34,457	38,662
S146	72,548	51,886	23,268	16,817	11,537
S147	1,18,815	79,339	29,870	32,449	16,332
S148	50,176	34,810	12,577	11,695	10,264
S149	4,728	3,381	2,400	366	599
S150	88,926	59,387	20,788	22,068	16,216
S151	53,016	38,314	15,964	12,882	9,298
S152	60,107	42,239	17,075	13,108	11,707
Controls ITS2 only					
S141	85,824	52,588	8	52,335	1
S142	81,924	52,270	10	51,988	6
S143*	130	13	5	6	2
LSU only					
S141	56,565	31,134	8	7	30,758
S142	92,110	62,629	23	0	62,129
S143	1,14,431	69,823	9	0	69,318
23S only					
S141	77,522	66,763	66,399	3	3
S142	42,004	36,422	36,263	3	9
S143	27,894	24,239	24,149	1	3
Total reads	1,590,047	1,104,687	398,442	339,780	359,768

Notes:

Number of DNA sequences recovered from each sample (S141–S152), before and after quality filtration, and after demultiplexing into each gene. Samples S141–S143 were used as control samples, each targeting only one of three PCR amplicons. Columns highlighted in gray show a low background contamination.

* One control sample (S143 ITS2) failed at sequencing, resulting in only 130 raw reads.

The resulting 21 samples were placed on a 96-well plate along with other samples published elsewhere ([Zaiko et al., 2016](#)), and sent to New Zealand Genomics Ltd. (University of Auckland, Auckland, New Zealand) for HTS library preparation which involved a second round of PCR to attach the Nextera™ indexes on to the amplicons for MiSeq Illumina™ sequencing. PCR products were combined in equimolar concentrations and the final library paired-end sequenced on an Illumina™ MiSeq using a 500 cycle (2 × 250) MiSeq® v2 Reagent Kit and standard flow cell.

Bioinformatics

Illumina™ sequence datasets were prepared using the read preparation and dereplication pipeline of USEARCH ([Edgar, 2010](#)). Firstly, paired reads were merged

(fastq_mergepairs command) and filtered (fastq_filter command) with an expected number of error of 0.25. More than 90% of the base pairs had a Q score >40. Next, samples were demultiplexed in three groups, primers were trimmed and a global trimming was operated according to the recommendations for ITS amplicon reads (Edgar, 2013). The sequence data were dereplicated and unique singletons found across the complete dataset were discarded.

For phylogenetic assignments of Symbiodiniaceae, three distinct annotated reference databases (ITS2, LSU, and 23S) were generated in fasta format, including sequence representatives from each of nine Symbiodiniaceae clades (A–I), with (i) 409 representative ITS2 phylotypes from GeoSymbio (Franklin et al., 2012), (ii) 37 representative LSU sequences from Pochon et al. (2012), and (iii) 104 sequences of 23S from Takabayashi et al. (2011). The three reference sequence databases used in the present study are provided in the File S1. Symbiodiniaceae assignments were performed using the software “Kallisto” (Bray et al., 2016) which provides speed and accuracy for optimal analysis of large-scale datasets (e.g., large RNA-Seq data) without the need for time-consuming alignment steps.

Because the main goal of the present pilot study was to investigate the sequencing depth and potential inter-marker biases of the multi-marker metabarcoding approach using giant clam samples as a proof-of-concept, as opposed to describing potentially novel Symbiodiniaceae diversity in these samples, we modified the Kallisto pipeline to only retain HTS reads yielding exact matches (i.e., without ambiguity amongst k-mers) to individual referenced genotypes in each gene. Individual sequences generated via HTS were then blasted against all pseudo-alignments and exact matches against the entire population of k-mers were recorded. To reduce mis-assignments, all merged reads with ambiguities between k-mers of different reference genotypes were determined as chimeric and removed from the dataset. These sequences that did not result in exact matches could correspond to non-Symbiodiniaceae sequences or to sequences not comprised in our custom databases. Therefore, a second comparison using BLASTn (threshold: e -value $<10^{-30}$) against the National Center for Biotechnology Information (NCBI) nucleotide databases was performed and the accession numbers yielding exact matches were retained for downstream analyses. The number of unique sequences matching genotypes in the reference databases and GenBank was recorded (Table S3). Raw sequence data were submitted to the BioProject Archive under accession PRJNA471926 (SRR7181922–SRR7181942).

Sequence diversity analyses

Unique sequence genotypes found at or above a 0.05% threshold from the total sequence abundance per sample were scored (Table S3) and the specific genotypes of reference (i.e., from in-house reference databases and GenBank) were retained for sequence diversity and phylogenetic analyses. Global sequence diversity from each of the three datasets (23S, ITS2, and LSU) were visualized using the plug-in DataBurst implemented in Excel (Microsoft Office version 2013 or later).

One sequence alignment was generated for each of the three investigated gene datasets using the sequence alignment software BioEdit v7.2.5 (Hall, 1999). Owing to the difficulty

in aligning sequences from *Symbiodinium* (clade A) and *Cladocopium* (clade C) genera when using the 23S and ITS2 genes, and between Symbiodiniaceae and non-Symbiodiniaceae (i.e., clams, fungi, and plants) sequences, phylogenetic reconstructions only aimed at depicting pair-wise relationships between retained sequence genotypes. Therefore, unrooted phylogenetic inferences were generated using the neighbor-joining method implemented in the program MEGA v. 7.0 (Kumar, Stecher & Tamura, 2016), with the *p*-distance model and gaps treated as pairwise deletions. Internal nodes support was tested using the bootstrap method (Felsenstein, 1985) and 500 replicates.

RESULTS

A total of 1,590,047 sequences were obtained from the 21 samples (75,716 \pm 41,576 sequences per sample), which included 12 amplicon samples (S141–S152) each containing three pooled gene products (23S, ITS2, and LSU) and nine amplicon samples from three selected giant clam isolates (S141, S142, and S143) which only contained a single gene amplicon as internal controls (Table 1; Table S3). One sample (internal control S143 for ITS2) failed the sequencing step with only 130 raw reads produced. After read cleaning, the total number of high-quality sequences was 1,104,687 (52,604 \pm 29,250 sequences per sample). The proportion of total reads (Table 1) between the three investigated genes was well-balanced with 398,442 reads (23S), 339,780 reads (ITS2), and 359,768 reads (LSU). In contrast, unique reads varied between 23,779 sequences for the 23S gene and 71,776 sequences for the LSU gene (Table S3). The inclusion of nine positive controls, representing three amplicon products per gene sequenced in isolation, revealed the presence of low levels of sequence cross-contamination between samples (mean of 4.5 sequences \pm 4.6 SD) (Table 1). This low-level of background contamination (1–23 sequences per sample) represented <0.003% of the total reads per sample (Table S3). Therefore, as a conservative measure, we chose to remove sequences that represented <0.05% of the total sequence abundance per sample.

Our bioinformatics pipeline identified 43 Symbiodiniaceae 23S chloroplast genotypes, including 16 that matched the 23S reference database and another 27 that matched sequences in GenBank. After exclusion of genotypes represented by less than 0.05% of the sequence abundance in each sample (Table S3), the number of unique 23S Symbiodiniaceae sequences retained for phylogenetic analysis was 11, including six sequences matching the 23S in-house reference (Fig. S2; Table S3). Similarly, blasting ITS2 and LSU datasets against both types of databases led to the identification of 117 and 93 unique sequences when using the original datasets, and to 46 and 51 unique sequences following the 0.05% filtering threshold, respectively.

Diversity diagrams were generated to visualize the sequence abundance of Symbiodiniaceae generic and sub-generic sequences recovered from the 12 giant clam samples and among the three investigated genes (Fig. 2). The pooled multi-gene approach yielded similar proportions of dominant genera, but with some notable differences. The genus *Symbiodinium* (previously Clade A) dominated in all three markers, particularly in 23S (91.8%; dominant sub-generic sequence *chvA2*), with lower but similar

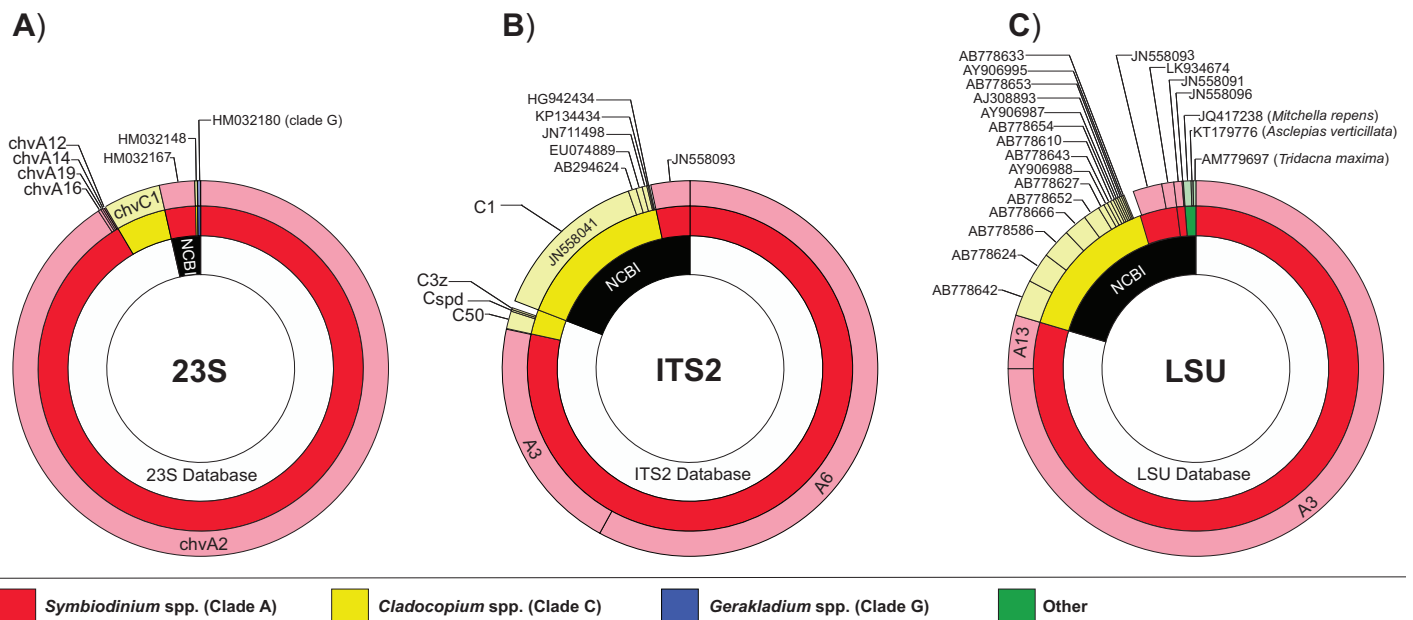


Figure 2 Proportion and diversity of Symbiodiniaceae genotypes across markers. Global Symbiodiniaceae diversity charts obtained from each of the three datasets: (A) 23S, (B) ITS2, and (C) LSU. The proportion of sequences matching one of the three in-house reference databases or NCBI (inner circles) and their corresponding phylogenetic affiliation at genus (i.e., clade; middle circles) and sub-generic (i.e., subclade; outer circles) levels. Sequence reads representing <0.1% of total read abundance are not included. [Full-size !\[\]\(fcc3264021d438d9732560e78099f674_img.jpg\) DOI: 10.7717/peerj.6898/fig-2](https://doi.org/10.7717/peerj.6898/fig-2)

proportions between *ITS2* (81.7%; dominant sub-generic sequences A3/A6) and *LSU* (83.9%; dominant sub-generic sequences A3/A13). The genus *Cladocopium* (previously Clade C) represented 7.9% (dominant sub-generic sequence chvC1), 18.2% (dominant sequence C1), and 15.0% (dominant sequence C1) of reads for the 23S, *ITS2*, and *LSU* markers, respectively. *Gerakladium* (previously clade G) was only detected using the chloroplast 23S gene (0.2% of reads), whereas the nuclear *LSU* gene displayed reduced specificity for Symbiodiniaceae as indicated by ~1% of sequence reads matching other organisms such as streptophytes (*Mitchella repens* and *Asclepias verticillata*), and the host giant clam *T. maxima*. Overall, the proportion of dominant Symbiodiniaceae generic and sub-generic sequences recovered between the pooled samples and the positive (single gene) controls were very similar (Table 2).

DISCUSSION

Multi-gene metabarcoding: more for less

The concept of pooled multi-gene amplicons for dual-indexed metabarcoding, that is, the tagging and pooling of distinct gene amplicons before Illumina™ adapter indexing and simultaneous sequencing of samples, has been used in other research fields (Elbrecht & Steinke, 2018; Keeley, Wood & Pochon, 2018; Marcelino & Verbruggen, 2016; Von Ammon et al., 2018; Zhang et al., 2018), but has never been applied to Symbiodiniaceae dinoflagellates. In this proof-of-concept study, we show that the technique effectively recovered similar proportions of sequence reads and Symbiodiniaceae genera among

Table 2 Percentage comparison of each Symbiodiniaceae sub-generic genotype per gene per treatment.

23S (%)	chvA12	chvA14	chvA16	chvA19	chvA2	chvC1	HM032148	HM032167
S141 (Pooled)	0.09	0.137	0.209	0.166	80.911	14.897	0.583	3.006
S141 (Control)	0.136	0.146	0.204	0.182	81.4	14.208	0.573	3.151
S142 (Pooled)	0.16	0.156	0.237	0.09	96.504	0	0	2.853
S142 (Control)	0.154	0.125	0.205	0.137	96.59	0	0	2.79
S143 (Pooled)	0.138	0.113	0.237	0.182	95.847	0	0	3.482
S143 (Control)	0.133	0.146	0.236	0.112	95.869	0	0	3.504
ITS2 (%)	ITS_A3	ITS_A5	ITS_A6	ITS_C57	AB294624	EU786115	JN558041	JN558093
S141 (Pooled)	45.912	0.064	49.321	0.761	2.497	0.099	0	1.347
S141 (Control)	47.037	0.099	51.951	0.913	0	0	0	0
S142 (Pooled)	4.281	0.081	81.403	0	0	0	0.043	14.191
S142 (Control)	5.177	0.122	94.701	0	0	0	0	0
S143 (Pooled)	96.595	0	0.146	0	0	0	0.283	2.975
S143 (Control)*	60	0	40	0	0	0	0	0
LSU (%)	LSU_A13	LSU_A3	AB778585	AB778586	AM779697	AY074967	EU650387	JN558091
S141 (Pooled)	2.018	70.821	0	10.878	0.737	0.015	0.357	1.616
S141 (Control)	2.43	70.47	0.016	11.051	0.511	0.013	0.296	1.711
S142 (Pooled)	18.618	75.42	0.028	0	0.036	0.007	0	3.134
S142 (Control)	19.001	74.863	0.031	0	0.018	0.018	0	3.315
S143 (Pooled)	22.83	72.4	0.023	0	0	0	0	3.615
S143 (Control)	23.866	71.319	0.023	0	0.001	0.006	0	3.71
LSU (%)—continued	JN558092	JN558093	JN558096	JN665089	KC510080	KT179776	LK934674	
S141 (Pooled)	0	0.447	0.007	0.06	9.657	2.174	1.214	
S141 (Control)	0.01	0.485	0.023	0.039	9.539	2.202	1.204	
S142 (Pooled)	0.014	0.264	0	0	0	0	2.479	
S142 (Control)	0.019	0.261	0.002	0	0	0	2.474	
S143 (Pooled)	0.006	0.173	0.006	0	0	0	0.947	
S143 (Control)	0.009	0.234	0.001	0	0	0	0.831	

Notes:

Percentage comparison of each Symbiodiniaceae sub-generic genotype recovered using the three amplicon markers in “Pooled” versus single “Control” markers (see Table 1). The proportion of each sub-generic type between “Pooled” and “Controls” is almost identical for the 23S marker, but shows some minor differences for the ITS2 and LSU markers (gray shades).

* One control sample (S143 ITS2 only) failed the sequencing resulting in only 130 raw reads (see Table 1).

the three pooled genes investigated per sample, providing more confidence that single gene primer biases did not occur during Nextera™ indexing. Another advantage is the ability to simultaneously visualize varying levels of phylogenetic resolution, enabling a more comprehensive assessment of the diversity present. For example, while the traditional “species-level” ITS2 marker (*LaJeunesse, 2001*) enabled characterization of 46 Symbiodiniaceae sub-generic sequences, the LSU marker, interestingly, offered both a similarly high resolution for Symbiodiniaceae (46 sub-generic sequences) and a reduced specificity by also enabling identification of other host-associated organisms such as streptophytes, as well as the host *Tridacna*. Nevertheless, the results regarding the

streptophytes need to be interpreted with caution. Indeed, the herbaceous woody shrub *M. repens* and the milkweed *A. verticillata* are both land plants restricted to the eastern coasts of North and South America and are, therefore, highly unlikely to represent true detections from our giant clam samples. It is possible that they are either the result of PCR contamination, inaccurate annotation in GenBank and/or correspond to the next sequence hit, the plant *Coffea arabica* which has a wide distribution including the Pacific region. The hyper-variable region of the chloroplast 23S marker used here is more conserved than the *ITS2* and *LSU* regions, but has been successfully used for specifically targeting low abundance free-living Symbiodiniaceae cells from environmental samples (Decelle et al., 2018; Manning & Gates, 2008; Pochon et al., 2010; Takabayashi et al., 2011). The unique detection of *Gerakladium* (clade G) using the 23S marker highlights the added value of the multi-gene approach for broader Symbiodiniaceae screening efficiency. This marker also showed remarkable consistency in the proportion of recovered sub-generic types between “Pooled” and “Control” samples, and contrasted with the *ITS2* and *LSU* markers (Table 2). For example, four *ITS2* sequences were detected in the “Pooled” but not in the “Control” samples, and there were five instances where *LSU* sequences were detected in the “Control” but not in the “Pooled” samples. Similarly, another difficult-to-explain contrast was observed for samples S147 and S152 (Fig. S3) where the proportion of recovered Symbiodiniaceae genera differed markedly between 23S and *ITS2/LSU* Markers. Although the above minor differences are likely attributable to PCR or sequencing biases, further research applying similar multi-gene approaches would improve our understanding of the intrinsic characteristics of these commonly employed Symbiodiniaceae markers and help guide the interpretation of such datasets.

Analytical cost is an important consideration for any research group aiming to monitor coral reef ecosystems, and the budget needed to include HTS for biodiversity assessments is highly variable. The cost depends on the number of gene regions investigated, method of library preparation, sequencing depth, and whether pooling amplicons is employed as shown here. A comparative cost estimate between the pooling of three PCR amplicons for the 12 investigated samples versus the complete processing of thirty six individual PCR amplicons showed that the pooling method enabled an approximately 5.4 times cost saving on reagents (tubes, tips, purification/quantification, and Nextera™ indexing). In this context, our approach is readily scalable and has the potential to offer substantial savings in terms of both time and cost, for example, by enabling coral reefs researchers to generate multi-gene Symbiodiniaceae data in a 96-well format for the price of a single dual-indexed Illumina™ MiSeq run. Nevertheless, the caveat is that upscaling this pooling method beyond a certain threshold will inevitably lead to a decrease in sequencing depth per sample per gene. Exceeding this threshold may be problematic for researchers wanting to gather a complete overview of fine-scale diversity, or study potential low-frequency intragenomic variants. Further research is needed to better understand this tradeoff and to set appropriate thresholds. Another important consideration is to make sure that the distinct pooled amplicons are of similar base-pair length, otherwise shorter gene amplicons may generate more sequence reads than the longer co-occurring amplicons (Engelbrekton et al., 2010). Additional studies

are also required to investigate whether multiplexing that is, the mixing of multiple primer sets in the original PCR to produce multi-gene amplicons (De Barba et al., 2014; Fiore-Donno et al., 2018) would result in similar proportions of Symbiodiniaceae genotypes between markers such as shown in the present study. Such an approach, if validated, would allow very significant additional cost savings.

Paving the way for comprehensive biodiversity assessment of giant clams

Giant clams on shallow reefs allow for the establishment of a diverse in-situ reservoir of interacting fungal, bacterial, and micro-algal communities (Baker, 2003; Neo et al., 2015). For example, they commonly harbor Symbiodiniaceae from at least three distinct genera (*Symbiodinium* (clade A), *Cladocopium* (clade C), and/or *Durusdinium* (clade D)) simultaneously or in isolation within one host, with *Symbiodinium* being the dominant symbiont genus in most clams (Baillie et al., 2000; DeBoer et al., 2012; Ikeda et al., 2017; Ikeda et al., 2016; Pappas et al., 2017; Trench, Wetthey & Porter, 1981). Similar to coral symbiosis, it is assumed that the genotypic composition of Symbiodiniaceae in giant clams is influenced by environmental or physical parameters (e.g., temperature, irradiance), or by life stages and taxonomic affiliation (Ikeda et al., 2017; Pappas et al., 2017). Giant clam larvae (veliger) acquire free-living Symbiodiniaceae cells “horizontally” from their surrounding environment (Fitt & Trench, 1981). When mature, giant clams (e.g., *T. derasa*) expel high numbers of intact symbionts in their faeces at rates of 4.9×10^5 cells d^{-1} (Buck, Rosenthal & Saint-Paul, 2002; Maruyama & Heslinga, 1997). Despite the dynamic interaction of symbionts between Tridacnidae and the environment, very little is known about the extent of symbiont diversity within giant clams and the potential exchange with other reef invertebrates engaged in similar symbiotic associations.

In this preliminary study, we found that genera *Symbiodinium* (clade A) and *Cladocopium* (clade C) dominated in adult giant clams in French Polynesia (Fig. S3). *Symbiodinium* was the major genus in our samples and in particular the closely related sub-generic ITS2 genotypes A3 and A6, previously described as *Symbiodinium tridacniadorum*, and therefore associated with *Tridacna* clams (Lee et al., 2015). A3 is the most dominant genotype in *T. maxima* around the world and both A3/A6 are more likely to be sampled in giant clams from shallow reefs (Weber, 2009).

Furthermore, for *Cladocopium* we found that the generalist ITS2 genotype C1 (LaJeunesse et al., 2003) co-dominated in our samples, which is consistent with a previous study showing C1 as a common genotype in *T. maxima* from around the world (Weber, 2009). We also found a smaller percentage of C3z, Cspd, and C50 ITS2 genotypes, which to our knowledge have not yet been found in *T. maxima*, and are usually restricted to corals (LaJeunesse et al., 2004; LaJeunesse et al., 2010; Macdonald et al., 2008; Shinzato et al., 2018). Finally, we did not detect any symbiont from the genus *Durusdinium* (Clade D) despite in-depth sequencing. However, *Durusdinium* has never been detected in *T. maxima* from French Polynesia compared to other regions such as the Indian Ocean (DeBoer et al., 2012; Weber, 2009). As we only worked with adult clams from shallow water, it would be interesting to confirm the hypotheses of Ikeda et al. (2017)

and *Weber (2009)* who argued that *Durusdinium* symbionts might be restricted to “young” *T. squamosa* clams (less than 11 cm) or that giant clams harbored this dinoflagellate genus only when sampled from deeper reefs, respectively. Nevertheless, the small dataset used in the present study precludes us from making any relevant assumptions about potentially novel symbiont diversity in giant clams. In particular, the use of the Kallisto bioinformatics pipeline which restricted the analysis to 100% sequence similarity hits is likely not suitable for the many studies where a high degree of sequence novelty is found. Additionally, a weakness of the Kallisto method is that the analysis of k-mers that are poorly divergent and/or not well represented in the reference database may impact the final sequence annotation, in particular at the sub-clade level. For example, the *ITS2* genotype C1 was only detected following NCBI blast, even though this sequence was present in our in-house database. This is not ideal, and one could argue that sequences should have been blasted exclusively against GenBank. Nevertheless, the chosen bioinformatics pipeline did not affect the general findings of the present study and was appropriate for this purpose. It is our hope, however, that our multi-gene approach will be investigated further using a more comprehensive giant clam dataset along with the development of an alternative bioinformatics method guiding users on the assignment of genus to species-level taxon ID to novel multi-gene sequences for deposition to GenBank.

CONCLUSIONS

This pilot project explored the use of pooled amplicon metabarcoding for rapid, cost-effective and in-depth characterization of Symbiodiniaceae dinoflagellates using the giant clam *T. maxima* as a model. Our results showed that the technique effectively recovered similar proportions of sequence reads and Symbiodiniaceae diversity among the three gene amplicons investigated per sample enabling a more comprehensive assessment of the diversity present, while also offering appreciable analytical cost savings. We also found that *Symbiodinium* (clades A) and *Cladocopium* (clade C) were the dominant genera in adult giant clams in French Polynesia, with similar sub-generic genotypes (*ITS2* A3, A6, and C1) previously described as commonly associated with giant clams from around the world. Our approach paves the way for more comprehensive surveys of this important yet endangered group of reef invertebrates and its potential role as an important Symbiodiniaceae reservoir for declining coral reefs. More work is required to test the applicability of this method to other symbiotic organisms as well as to environmental samples. Future investigations may also expand on this method to clarify species-level differentiation among Symbiodiniaceae taxa using other markers (e.g., nuclear Actin, chloroplast *psbA*), or simultaneously characterize all organisms (viruses, bacteria, fungi, and other eukaryotes) associated with a more diverse host range. Such holistic diversity assessments will improve our knowledge on the ecology and evolution of tropical holobionts and better predict the adaptation of coral reefs in a rapidly changing environment.

ACKNOWLEDGEMENTS

We thank Jonathan Drew for his support in the laboratory, and Charley Waters, Sam Murray and Chris Cornelisen for valuable discussions during manuscript preparation.

ADDITIONAL INFORMATION AND DECLARATIONS

Funding

This work was supported by Cawthron Institute Internal Investment Fund (IIF) #BST16931 and by the French National Research Center (CNRS). The funders had no role in study design, data collection and analysis, decision to publish, or preparation of the manuscript.

Grant Disclosures

The following grant information was disclosed by the authors:
Cawthron Institute Internal Investment Fund (IIF): #BST16931.
French National Research Center (CNRS).

Competing Interests

Xavier Pochon is an Academic Editor for PeerJ.

Author Contributions

- Xavier Pochon conceived and designed the experiments, performed the experiments, analyzed the data, contributed reagents/materials/analysis tools, prepared figures and/or tables, authored or reviewed drafts of the paper, approved the final draft.
- Patricia Wecker contributed reagents/materials/analysis tools, prepared figures and/or tables, authored or reviewed drafts of the paper, approved the final draft.
- Michael Stat authored or reviewed drafts of the paper, approved the final draft.
- Véronique Berteaux-Lecellier conceived and designed the experiments, prepared figures and/or tables, authored or reviewed drafts of the paper, approved the final draft.
- Gaël Lecellier conceived and designed the experiments, performed the experiments, analyzed the data, contributed reagents/materials/analysis tools, prepared figures and/or tables, authored or reviewed drafts of the paper, approved the final draft.

Data Availability

The following information was supplied regarding data availability:

Raw sequence data are available at the BioProject Archive under accession [PRJNA471926](https://www.ncbi.nlm.nih.gov/bioproject/PRJNA471926) (SRR7181922–SRR7181942).

Supplemental Information

Supplemental information for this article can be found online at <http://dx.doi.org/10.7717/peerj.6898#supplemental-information>.

REFERENCES

- Baillie BC, Belda-Baillie CA, Silvestre V, Sison M, Gomez AV, Gomez ED, Monje V. 2000. Genetic variation in *Symbiodinium* isolates from giant clams based on random-amplified-polymorphic DNA (RAPD) patterns. *Marine Biology* **136**(5):829–836
DOI [10.1007/s002270000290](https://doi.org/10.1007/s002270000290).

- Baker AC. 2003.** Flexibility and specificity in coral-algal symbiosis: diversity, ecology, and biogeography of *Symbiodinium*. *Annual Review of Ecology, Evolution, and Systematics* **34**(1):661–689 DOI [10.1146/annurev.ecolsys.34.011802.132417](https://doi.org/10.1146/annurev.ecolsys.34.011802.132417).
- Bin Othman AS, Goh GHS, Todd PA. 2010.** The distribution and status of giant clams (Family Tridacnidae)—A short review. *Raffles Bulletin of Zoology* **58**(1):103–111.
- Boulotte NM, Dalton SJ, Carroll AG, Harrison PL, Putnam HM, Peplow LM, Van Oppen MJ. 2016.** Exploring the *Symbiodinium* rare biosphere provides evidence for symbiont switching in reef-building corals. *International Society for Microbial Ecology Journal* **10**(11):2693–2701 DOI [10.1038/ismej.2016.54](https://doi.org/10.1038/ismej.2016.54).
- Bray NL, Pimentel H, Melsted P, Pachter L. 2016.** Near-optimal probabilistic RNA-seq quantification. *Nature Biotechnology* **34**(5):525–527 DOI [10.1038/nbt.3519](https://doi.org/10.1038/nbt.3519).
- Buck BH, Rosenthal H, Saint-Paul U. 2002.** Effect of increased irradiance and thermal stress on the symbiosis of *Symbiodinium microadriaticum* and *Tridacna gigas*. *Aquatic Living Resources* **15**(2):107–117 DOI [10.1016/S0990-7440\(02\)01159-2](https://doi.org/10.1016/S0990-7440(02)01159-2).
- Cabaitan PC, Gomez ED, Aliño PM. 2008.** Effects of coral transplantation and giant clam restocking on the structure of fish communities on degraded patch reefs. *Journal of Experimental Marine Biology and Ecology* **357**(1):85–98 DOI [10.1016/j.jembe.2008.01.001](https://doi.org/10.1016/j.jembe.2008.01.001).
- Coffroth MA, Santos SR. 2005.** Genetic diversity of symbiotic dinoflagellates in the genus *Symbiodinium*. *Protist* **156**(1):19–34 DOI [10.1016/j.protis.2005.02.004](https://doi.org/10.1016/j.protis.2005.02.004).
- Cunning R, Yost DM, Guarinello ML, Putnam HM, Gates RD. 2015.** Variability of *Symbiodinium* communities in waters, sediments, and corals of thermally distinct reef pools in American Samoa. *PLOS ONE* **10**(12):e0145099 DOI [10.1371/journal.pone.0145099](https://doi.org/10.1371/journal.pone.0145099).
- De Barba M, Miquel C, Boyer F, Mercier C, Rioux D, Coissac E, Taberlet P. 2014.** DNA metabarcoding multiplexing and validation of data accuracy for diet assessment: application to omnivorous diet. *Molecular Ecology Resources* **14**(2):306–323 DOI [10.1111/1755-0998.12188](https://doi.org/10.1111/1755-0998.12188).
- DeBoer TS, Baker AC, Erdmann MV, Ambariyanto A, Jones PR, Barber PH. 2012.** Patterns of *Symbiodinium* distribution in three giant clam species across the biodiverse Bird's Head region of Indonesia. *Marine Ecology Progress Series* **444**:117–132 DOI [10.3354/meps09413](https://doi.org/10.3354/meps09413).
- Decelle J, Carradec Q, Pochon X, Henry N, Romac S, Mahe F, Dunthorn M, Kourlaiev A, Voolstra CR, Wincker P, De Vargas C. 2018.** Worldwide occurrence and activity of the reef-building coral symbiont *Symbiodinium* in the open ocean. *Current Biology* **28**(22):3625–3633.e3 DOI [10.1016/j.cub.2018.09.024](https://doi.org/10.1016/j.cub.2018.09.024).
- Dubousquet V, Berteaux-Lecellier V, Lopes V, Raharivelomanana P, Lecellier G. 2018.** Existence of two novel and non-sectorized clades of the giant clam *Tridacna maxima* in French Polynesia: implications for connectivity and origin. Available at <https://hal-uvsq.archives-ouvertes.fr/hal-01713884>.
- Edgar RC. 2010.** Search and clustering orders of magnitude faster than BLAST. *Bioinformatics* **26**(19):2460–2461 DOI [10.1093/bioinformatics/btq461](https://doi.org/10.1093/bioinformatics/btq461).
- Edgar RC. 2013.** UPARSE: highly accurate OTU sequences from microbial amplicon reads. *Nature Methods* **10**(10):996–998 DOI [10.1038/nmeth.2604](https://doi.org/10.1038/nmeth.2604).
- Edmunds PJ, Pochon X, Levitan DR, Yost DM, Belcaid M, Putnam HM, Gates RD. 2014.** Long-term changes in *Symbiodinium* communities in *Orbicella annularis* in St. John, US Virgin Islands. *Marine Ecology Progress Series* **506**:129–144 DOI [10.3354/meps10808](https://doi.org/10.3354/meps10808).
- Elbrecht V, Steinke D. 2018.** Scaling up DNA metabarcoding for freshwater macrozoobenthos monitoring. *Freshwater Biology* **64**(2):380–387 DOI [10.1111/fwb.13220](https://doi.org/10.1111/fwb.13220).

- Engelbrektson A, Kunin V, Wrighton KC, Zvenigorodsky N, Chen F, Ochman H, Hugenholtz P. 2010. Experimental factors affecting PCR-based estimates of microbial species richness and evenness. *International Society for Microbial Ecology Journal* 4(5):642–647 DOI 10.1038/ismej.2009.153.
- Felsenstein J. 1985. Phylogenies and the comparative method. *American Naturalist* 125(1):1–15 DOI 10.1086/284325.
- Fiore-Donno AM, Rixen C, Rippin M, Glaser K, Samolov E, Karsten U, Becker B, Bonkowski M. 2018. New barcoded primers for efficient retrieval of cercozoan sequences in high-throughput environmental diversity surveys, with emphasis on worldwide biological soil crusts. *Molecular Ecology Resources* 18(2):229–239 DOI 10.1111/1755-0998.12729.
- Fitt WK, Trench RK. 1981. Spawning, development, and acquisition of zooxanthellae by *Tridacna squamosa* (mollusca, bivalvia). *Biological Bulletin* 161(2):213–235 DOI 10.2307/1540800.
- Franklin EC, Stat M, Pochon X, Putnam HM, Gates RD. 2012. GeoSymbio: a hybrid, cloud-based web application of global geospatial bioinformatics and ecoinformatics for *Symbiodinium*-host symbioses. *Molecular Ecology Resources* 12(2):369–373 DOI 10.1111/j.1755-0998.2011.03081.x.
- Hall TA. 1999. BioEdit: a user-friendly biological sequence alignment editor and analysis program for Windows 95/98/NT. *Nucleic Acids Research* 41(41):95–98.
- Hume BCC, Ziegler M, Poulain J, Pochon X, Romac S, Boissin E, De Vargas C, Planes S, Wincker P, Voolstra CR. 2018. An improved primer set and amplification protocol with increased specificity and sensitivity targeting the *Symbiodinium* ITS2 region. *PeerJ* 6(17):e4816 DOI 10.7717/peerj.4816.
- Ikeda S, Yamashita H, Kondo S-N, Inoue K, Morishima S-Y, Koike K. 2017. Zooxanthellal genetic varieties in giant clams are partially determined by species-intrinsic and growth-related characteristics. *PLOS ONE* 12(2):e0172285 DOI 10.1371/journal.pone.0172285.
- Ikeda S, Yamashita H, Liao LM, Koike K. 2016. A simple and rapid determination method for zooxanthellal genetic diversity in giant clams using multiplex PCR. *Fisheries Science* 82(5):747–753 DOI 10.1007/s12562-016-1004-x.
- IUCN Red List. 2018. The IUCN Red List of threatened species. Available at <https://www.iucnredlist.org>.
- Keeley N, Wood SA, Pochon X. 2018. Development and preliminary validation of a multi-trophic metabarcoding biotic index for monitoring benthic organic enrichment. *Ecological Indicators* 85:1044–1057 DOI 10.1016/j.ecolind.2017.11.014.
- Klumpp DW, Griffiths CL. 1994. Contributions of phototrophic and heterotrophic nutrition to the metabolic and growth requirements of four species of giant clam (Tridacnidae). *Marine Ecology Progress Series* 115:103–115 DOI 10.3354/meps115103.
- Knop D. 1996. *Giant clams - a comprehensive guide to the identification and care of tridacnid clams*. Ettlingen: Dähne Verlag, 255.
- Kozich JJ, Westcott SL, Baxter NT, Highlander SK, Schloss PD. 2013. Development of a dual-index sequencing strategy and curation pipeline for analyzing amplicon sequence data on the MiSeq Illumina sequencing platform. *Applied and Environmental Microbiology* 79(17):5112–5120 DOI 10.1128/AEM.01043-13.
- Kumar S, Stecher G, Tamura K. 2016. MEGA7: molecular evolutionary genetics analysis version 7.0 for bigger datasets. *Molecular Biology and Evolution* 33(7):1870–1874 DOI 10.1093/molbev/msw054.
- LaJeunesse TC. 2001. Investigating the biodiversity, ecology, and phylogeny of endosymbiotic dinoflagellates in the genus *symbiodinium* using the its region: in search of a “species” level marker. *Journal of Phycology* 37(5):866–880 DOI 10.1046/j.1529-8817.2001.01031.x.

- LaJeunesse TC, Loh WKW, Van Woesik R, Hoegh-Guldberg O, Schmidt GW, Fitt WK. 2003.** Low symbiont diversity in southern Great Barrier Reef corals, relative to those of the Caribbean. *Limnology and Oceanography* **48**(5):2046–2054 DOI [10.4319/lo.2003.48.5.2046](https://doi.org/10.4319/lo.2003.48.5.2046).
- LaJeunesse TC, Parkinson JE, Gabrielson PW, Jeong HJ, Reimer JD, Voolstra CR, Santos SR. 2018.** Systematic revision of Symbiodiniaceae highlights the antiquity and diversity of coral endosymbionts. *Current Biology* **28**(16):2570–2580.e6 DOI [10.1016/j.cub.2018.07.008](https://doi.org/10.1016/j.cub.2018.07.008).
- LaJeunesse TC, Smith R, Walther M, Pinzon J, Pettay DT, McGinley M, Aschaffenburg M, Medina-Rosas P, Cupul-Magana AL, Perez AL, Reyes-Bonilla H, Warner ME. 2010.** Host-symbiont recombination versus natural selection in the response of coral-dinoflagellate symbioses to environmental disturbance. *Proceedings of the Royal Society B: Biological Sciences* **277**(1696):2925–2934 DOI [10.1098/rspb.2010.0385](https://doi.org/10.1098/rspb.2010.0385).
- LaJeunesse T, Thornhill D, Cox E, Stanton F, Fitt W, Schmidt G. 2004.** High diversity and host specificity observed among symbiotic dinoflagellates in reef coral communities from Hawaii. *Coral Reefs* **23**(4):596–603 DOI [10.1007/s00338-004-0428-4](https://doi.org/10.1007/s00338-004-0428-4).
- Lee SY, Jeong HJ, Kang NS, Jang TY, Jang SH, Lajeunesse TC. 2015.** *Symbiodinium tridacnidorum* sp. nov., a dinoflagellate common to Indo-Pacific giant clams, and a revised morphological description of *Symbiodinium microadriaticum* Freudenthal, emended Trench & Blank. *European Journal of Phycology* **50**(2):155–172 DOI [10.1080/09670262.2015.1018336](https://doi.org/10.1080/09670262.2015.1018336).
- Macdonald AHH, Sampayo EM, Ridgway T, Schleyer MH. 2008.** Latitudinal symbiont zonation in *Stylophora pistillata* from southeast Africa. *Marine Biology* **154**(2):209–217 DOI [10.1007/s00227-008-0915-1](https://doi.org/10.1007/s00227-008-0915-1).
- Manning MM, Gates RD. 2008.** Diversity in populations of free-living *Symbiodinium* from a Caribbean and Pacific reef. *Limnology and Oceanography* **53**(5):1853–1861 DOI [10.4319/lo.2008.53.5.1853](https://doi.org/10.4319/lo.2008.53.5.1853).
- Marcelino VR, Verbruggen H. 2016.** Multi-marker metabarcoding of coral skeletons reveals a rich microbiome and diverse evolutionary origins of endolithic algae. *Scientific Reports* **6**(1):31508 DOI [10.1038/srep31508](https://doi.org/10.1038/srep31508).
- Maruyama T, Heslinga GA. 1997.** Fecal discharge of zooxanthellae in the giant clam *Tridacna derasa*, with reference to their in situ growth rate. *Marine Biology* **127**(3):473–477 DOI [10.1007/s002270050035](https://doi.org/10.1007/s002270050035).
- Mercier A, Hamel JF. 1996.** The secret of the giant clam. *Freshwater and Marine Aquarium* **19**:112–113.
- Neo ML, Eckman W, Vicentuan K, Teo SLM, Todd PA. 2015.** The ecological significance of giant clams in coral reef ecosystems. *Biological Conservation* **181**:111–123 DOI [10.1016/j.biocon.2014.11.004](https://doi.org/10.1016/j.biocon.2014.11.004).
- Pappas MK, He S, Hardenstine RS, Kanee H, Berumen ML. 2017.** Genetic diversity of giant clams (*Tridacna* spp.) and their associated *Symbiodinium* in the central Red Sea. *Marine Biodiversity* **47**(4):1209–1222 DOI [10.1007/s12526-017-0715-2](https://doi.org/10.1007/s12526-017-0715-2).
- Pochon X, Putnam HM, Burki F, Gates RD. 2012.** Identifying and characterizing alternative molecular markers for the symbiotic and free-living dinoflagellate genus *Symbiodinium*. *PLOS ONE* **7**(1):e29816 DOI [10.1371/journal.pone.0029816](https://doi.org/10.1371/journal.pone.0029816).
- Pochon X, Putnam HM, Gates RD. 2014.** Multi-gene analysis of *Symbiodinium* dinoflagellates: a perspective on rarity, symbiosis, and evolution. *PeerJ* **2**:e394 DOI [10.7717/peerj.394](https://doi.org/10.7717/peerj.394).
- Pochon X, Stat M, Takabayashi M, Chasqui L, Chauka LJ, Logan DDK, Gates RD. 2010.** Comparison of endosymbiotic and free-living *Symbiodinium* (Dinophyceae) diversity in a Hawaiian reef environment. *Journal of Phycology* **46**(1):53–65 DOI [10.1111/j.1529-8817.2009.00797.x](https://doi.org/10.1111/j.1529-8817.2009.00797.x).

- Rhodes J, Beale MA, Fisher MC. 2014. Illuminating choices for library prep: a comparison of library preparation methods for whole genome sequencing of *Cryptococcus neoformans* using Illumina HiSeq. *PLOS ONE* 9(11):e113501 DOI 10.1371/journal.pone.0113501.
- Romanek CS, Grossman EL. 1989. Stable isotope profiles of *Tridacna maxima* as environmental indicators. *PALAIOS* 4(5):402–413 DOI 10.2307/3514585.
- Shinzato C, Zayasu Y, Kanda M, Kawamitsu M, Satoh N, Yamashita H, Suzuki G. 2018. Using seawater to document coral-zooxanthella diversity: a new approach to coral reef monitoring using environmental DNA. *Frontiers in Marine Science* 5:28 DOI 10.3389/fmars.2018.00028.
- Smith EG, Ketchum RN, Burt JA. 2017. Host specificity of *Symbiodinium* variants revealed by an ITS2 metahaplotype approach. *International Society for Microbial Ecology Journal* 11(6):1500–1503 DOI 10.1038/ismej.2016.206.
- Stat M, Carter D, Hoegh-Guldberg O. 2006. The evolutionary history of *Symbiodinium* and scleractinian hosts—Symbiosis, diversity, and the effect of climate change. *Perspectives in Plant Ecology, Evolution and Systematics* 8(1):23–43 DOI 10.1016/j.ppees.2006.04.001.
- Stat M, Huggett MJ, Bernasconi R, DiBattista JD, Berry TE, Newman SJ, Harvey ES, Bunce M. 2017. Ecosystem biomonitoring with eDNA: metabarcoding across the tree of life in a tropical marine environment. *Scientific Reports* 7(1):12240 DOI 10.1038/s41598-017-12501-5.
- Takabayashi M, Adams LM, Pochon X, Gates RD. 2011. Genetic diversity of free-living *Symbiodinium* in surface water and sediment of Hawai'i and Florida. *Coral Reefs* 31(1):157–167 DOI 10.1007/s00338-011-0832-5.
- Thomas L, Kendrick GA, Kennington WJ, Richards ZT, Stat M. 2014. Exploring *Symbiodinium* diversity and host specificity in *Acropora* corals from geographical extremes of Western Australia with 454 amplicon pyrosequencing. *Molecular Ecology* 23(12):3113–3126 DOI 10.1111/mec.12801.
- Trench RK, Wethey DS, Porter JW. 1981. Observations on the symbiosis with zooxanthellae among the tridacnidae (Mollusca, Bivalvia). *Biological Bulletin* 161(1):180–198 DOI 10.2307/1541117.
- Von Ammon U, Wood SA, Laroche O, Zaiko A, Tait L, Lavery S, Inglis G, Pochon X. 2018. The impact of artificial surfaces on marine bacterial and eukaryotic biofouling assemblages: a high-throughput sequencing analysis. *Marine Environmental Research* 133:57–66 DOI 10.1016/j.marenvres.2017.12.003.
- Watanabe T, Suzuki A, Kawahata H, Kan H, Ogawa S. 2004. A 60-year isotopic record from a mid-Holocene fossil giant clam (*Tridacna gigas*) in the Ryukyu Islands: physiological and paleoclimatic implications. *Palaeogeography, Palaeoclimatology, Palaeoecology* 212(3–4):343–354 DOI 10.1016/S0031-0182(04)00358-X.
- Weber M. 2009. The biogeography and evolution of *Symbiodinium* in Giant Clams (Tridacnidae). PhD Dissertation. UC Berkeley, 103-pages + appendices.
- Wecker P, Fournier A, Bosserelle P, Debitus C, Lecellier G, Berteaux-Lecellier V. 2015. Dinoflagellate diversity among nudibranchs and sponges from French Polynesia: insights into associations and transfer. *Comptes Rendus Biologies* 338(4):278–283 DOI 10.1016/j.crv.2015.01.005.
- Zaiko A, Schimanski K, Pochon X, Hopkins GA, Goldstien S, Floerl O, Wood SA. 2016. Metabarcoding improves detection of eukaryotes from early *Biofouling* communities: implications for pest monitoring and pathway management. *Biofouling* 32(6):671–684 DOI 10.1080/08927014.2016.1186165.
- Zhang GK, Chain FJJ, Abbott CL, Cristescu ME. 2018. Metabarcoding using multiplexed markers increases species detection in complex zooplankton communities. *Evolutionary Applications* 11(10):1901–1914 DOI 10.1111/eva.12694.