



HAL
open science

Unique quantitative Symbiodiniaceae signature of coral colonies revealed through spatio-temporal survey in Moorea

Héloïse H Rouzé, Gael Lecellier, Xavier Pochon, Gergely Torda, Veronique Berteaux-Lecellier

► **To cite this version:**

Héloïse H Rouzé, Gael Lecellier, Xavier Pochon, Gergely Torda, Veronique Berteaux-Lecellier. Unique quantitative Symbiodiniaceae signature of coral colonies revealed through spatio-temporal survey in Moorea. *Scientific Reports*, 2019, 9, pp.7921. 10.1038/s41598-019-44017-5 . hal-02350427

HAL Id: hal-02350427

<https://hal.science/hal-02350427v1>

Submitted on 6 Nov 2019

HAL is a multi-disciplinary open access archive for the deposit and dissemination of scientific research documents, whether they are published or not. The documents may come from teaching and research institutions in France or abroad, or from public or private research centers.

L'archive ouverte pluridisciplinaire **HAL**, est destinée au dépôt et à la diffusion de documents scientifiques de niveau recherche, publiés ou non, émanant des établissements d'enseignement et de recherche français ou étrangers, des laboratoires publics ou privés.

SCIENTIFIC REPORTS



OPEN

Unique quantitative Symbiodiniaceae signature of coral colonies revealed through spatio-temporal survey in Moorea

Héloïse Rouzé¹, Gaël Lecellier^{2,3}, Xavier Pochon^{4,5}, Gergely Torda⁶ & Véronique Berteaux-Lecellier^{1,2}

One of the mechanisms of rapid adaptation or acclimatization to environmental changes in corals is through the dynamics of the composition of their associated endosymbiotic Symbiodiniaceae community. The various species of these dinoflagellates are characterized by different biological properties, some of which can confer stress tolerance to the coral host. Compelling evidence indicates that the corals' Symbiodiniaceae community can change via shuffling and/or switching but the ecological relevance and the governance of these processes remain elusive. Using a qPCR approach to follow the dynamics of Symbiodiniaceae genera in tagged colonies of three coral species over a 10–18 month period, we detected putative genus-level switching of algal symbionts, with coral species-specific rates of occurrence. However, the dynamics of the corals' Symbiodiniaceae community composition was not driven by environmental parameters. On the contrary, putative shuffling event were observed in two coral species during anomalous seawater temperatures and nutrient concentrations. Most notably, our results reveal that a suit of permanent Symbiodiniaceae genera is maintained in each colony in a specific range of quantities, giving a unique 'Symbiodiniaceae signature' to the host. This individual signature, together with sporadic symbiont switching may account for the intra-specific differences in resistance and resilience observed during environmental anomalies.

Dinoflagellate algae from the family Symbiodiniaceae are one of the keystone taxa for coral reef ecosystems. Their importance lies in that in tandem to living free in the environment^{1,2}, they also form photo-symbiotic associations with corals and several other invertebrates (e.g.^{3,4}). Their extraordinary diversity encompasses at least nine major lineages⁵, labelled A to I in the literature some of which were recently erected to genus level⁵: *Symbiodinium* (clade A), *Breviolum* (clade B), *Cladocopium* (clade C) and *Durusdinium* (clade D). Moreover, each lineage encompasses multiple distinct genetic types^{6,7}. The acquisition of Symbiodiniaceae by corals is initiated during early life stages via vertical/maternal transfer or through horizontal pathways (reviewed in⁸). This fine-tuned partnership between the metazoan coral and the dinoflagellates enables the coral-guild (i.e. the holobiont) to thrive in oligotrophic waters (e.g.^{9–14}). The collapse of this symbiosis is becoming a common global phenomenon as environmental anomalies are becoming more and more frequent and severe, leading to mass coral bleaching and mortality events globally^{15–18}.

The coral holobiont's resilience to environmental stressors is in large part based on various genotypes and biological traits¹⁹. This includes the complex interaction and differential physiological responses of symbiotic Symbiodiniaceae populations that may be composed of one single genus or multiple genera and species^{20,21} and the host^{22–25}. A plethora of *in situ* and *ex situ* studies have reported highly dynamic coral-Symbiodiniaceae associations in response to environmental changes, contrasts or extremes^{26–31}. This is a particularly complex mechanism

¹USR3278 CRIOBE, Labex CORAIL, BP 1013 Papetoai, 98729, Moorea, French Polynesia. ²UMR250/9220 ENTROPIE, Labex CORAIL, 101, promenade Roger-Laroque, BP A5 98848, Noumea, cedex, New Caledonia. ³Université de Paris-Saclay, UVSQ, 55 Avenue de Paris, 78035, Versailles, Cedex, France. ⁴Coastal and Freshwater Group, Cawthron Institute, 98 Halifax Street East, 7010, Nelson, New Zealand. ⁵Institute of Marine Science, University of Auckland, Warkworth, 0941, New Zealand. ⁶Australian Research Council Centre of Excellence for Coral Reef Studies, James Cook University, Townsville, Australia. Correspondence and requests for materials should be addressed to H.R. (email: heloise.rouze@gmail.com)

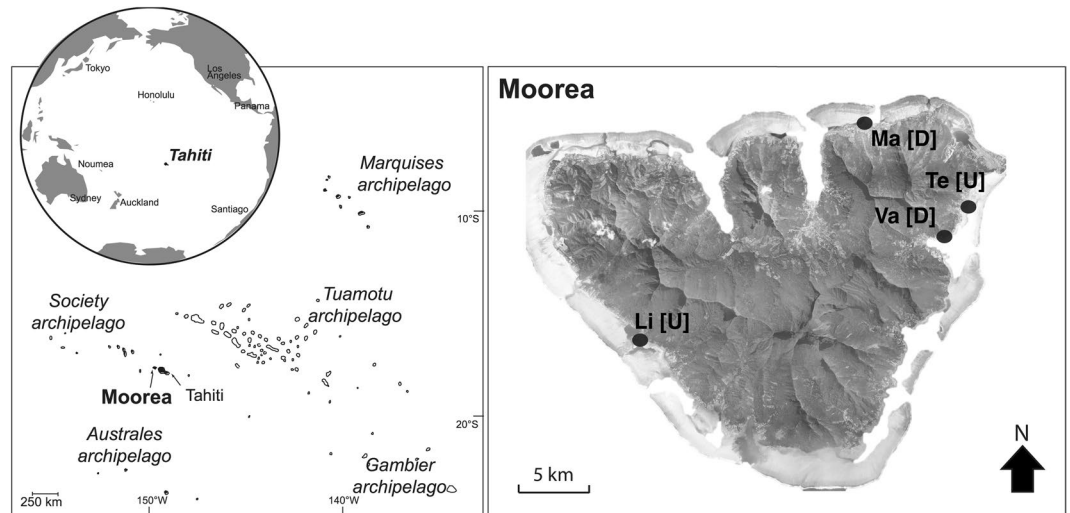


Figure 1. Map of Moorea island (Archipelago of society, French Polynesia) and the locations of the fringing reefs studied: disturbed [D] sites Vaiare (Va) and Maharepa (Ma) versus undisturbed [U] sites Linareva (Li) and Teavaro (Te) modified from⁵⁰.

to study, as the free-living Symbiodiniaceae communities may be altered depending on habitat quality^{32,33}. Shifts that occur over the coral's ontogeny have been related to physiological states (e.g. diseased vs. healthy, temperature resilience)^{34–37}. These ecological observations support the idea that flexibility in the coral-Symbiodiniaceae partnership enables the coral holobiont to adapt rapidly to environmental stressors³⁸, a paradigm that is encapsulated in the Adaptive Bleaching Hypothesis³⁹. In contrast, the analysis of ancient DNA from octocoral species revealed a stable coral host-Symbiodiniaceae association over the last century⁴⁰. Moreover, comparative genomic and transcriptomic analyses showed evidence of a metabolic continuum between the genomes of corals and associated symbionts, supporting the hypothesis that co-evolutionary mechanisms in corals play important roles in the maintenance and adaptation of the symbiosis^{41–43}. In line with these observations, coral-Symbiodiniaceae associations can exhibit a high degree of specificity^{44–47} at the level of both genera and species, and there is a lack of evidence for adult coral colonies to form stable partnerships with newly acquired exogenous Symbiodiniaceae^{48,49}. Therefore, corals have to balance two apparently incompatible traits: Symbiodiniaceae genus fidelity versus Symbiodiniaceae genus flexibility⁵⁰.

Deciphering the extent of symbiont change potentially occurring among different coral species through shuffling (intrinsic changes) and/or switching (extrinsic changes) of Symbiodiniaceae communities³⁹, requires the consideration of cryptic taxonomic units present at trace levels^{21,51–53}. While an increasing attention has been directed towards these symbiotic cryptic populations since the development of high-sensitivity molecular techniques such as real-time quantitative Polymerase Chain Reaction (qPCR,^{21,51}) and Next-Generation Sequencing^{54–59}, their ecological role in the holobiont's performance is still poorly understood. To date, studies investigating cryptic Symbiodiniaceae populations have mostly focused on the presumably stress tolerant genus *Durussdinium*, and the potential for change in the relative abundance of pre-existing Symbiodiniaceae genotypes in response to heat stress^{23,28,31,53,56,60,61}. Recent studies also using random sampling surveys revealed that possible *de novo* acquisition of exogenous Symbiodiniaceae species can occur associated with environmental changes^{47,56}. In contrast, a long-term survey of diseased *A. cytherea* corals found that the acquisition of unusual Symbiodiniaceae genera by corals facing environmental stressors is sporadic rather than specific³⁶.

In the present study we evaluate the potential of Symbiodiniaceae genus dynamics as a rapid adaptive mechanism for the coral holobiont. We study the composition of Symbiodiniaceae communities and their quantitative regulation in tagged colonies of three coral species over a period of 10–18 months, among environmentally contrasting locations of Moorea (French Polynesia).

Material and Methods

Monitoring design: reefs and corals. Sampling was conducted in the Moorea lagoon, in the Society Archipelago, French Polynesia (Fig. 1) from February 2011 to August 2012, i.e. our study period included two wet (November to April) and two dry (May to October) seasons (Table S2). The spatio-temporal dynamics of Symbiodiniaceae genera were investigated on three dominant Pacific coral species (*Pocillopora acuta*, *Acropora cytherea*, and *Porites rus*) with contrasting biological traits (Table 1). Sample collection took place every two months in four inshore fringing reef locations (1–2 m depth; Fig. 1) over a period of 10 months for *P. rus*, 14 months for *A. cytherea*, and 18 months for *P. acuta* (*P. damicornis* type β sensu⁶² genetically identified in⁵⁰). At every timepoint, small fragments (0.5–1 cm³) were collected from each of 5 to 6 tagged adult colonies per coral species per study site (Table 1). For *Acropora cytherea* 11 colonies correspond to those used by Rouzé *et al.*³⁶ and 5 new colonies were added for this study. The four study sites (Fig. 1) were selected for their contrasting environmental conditions: exposed to human activities (Disturbed: D) at Vaiare (in the direct vicinity of a highly frequented ferry wharf) and Maharepa (anthropogenic impacts from hotel facilities, aquatic activities and close

Species	Biological Traits			Survey	
	Morphology	Resistance	Symb. acquisition	Period	Site (N)
PAC	Branching	Moderate	Vertical	Feb11-Aug12	Li (5), Te (5), Va (5), Ma (5)
PRU	Massive-branching	High	Vertical	Oct11-Aug12	Li (5), Te (5), Va (5), Ma (5)
ACY	Tabular	Low	Horizontal	Jun11-Aug12	Va (5), Li (5)*, LI2 (6)*

Table 1. Biological traits and conditions of the surveys of the tagged coral colonies *Acropora cytherea* (ACY), *Pocillopora acuta* (PAC) and *Porites rus* (PRU). Reef sites are coded as follows: Linareva (Li), Teavaro (Te), Vaiare (Va) and Maharepa (Ma) with the number of colonies tagged in each of them (N). Asterisk indicates samples used in Rouzé *et al.* 2016³⁶.

to a river mouth subject to intense terrestrial runoffs) versus limited to human activities (Undisturbed: U) at Linareva and Teavaro⁶³.

Biological and physical environmental parameters (i.e. seawater temperature, nutrients, phytoplankton and sedimentation) were also collected at each timepoint at each location as described in Rouzé *et al.*⁶³ (Fig. S1 and Table S2).

DNA extraction and Symbiodiniaceae/host ratio quantification. The fragments collected from each coral colony were stored individually in 80% ethanol (EtOH) at -20°C until genomic DNA extraction. All CTAB-based DNA extractions, qPCR assays (i.e. tests for specificity and efficiency of each genus-specific primer) and Symbiodiniaceae/host ratio measurements, including the conditions of qPCR assays, were conducted as described in⁵⁰. Briefly, Symbiodiniaceae from the genus *Symbiodinium*, *Breviolum*, *Cladocopium* and *Durusdinium* and clades E and F⁶⁴ were targeted and quantified using the nuclear ribosomal large subunit (28S rRNA) gene as a template. More specifically, the sensitivity degree of this qPCR method was estimated at the order of 1 algal cell for *Symbiodinium*, *Cladocopium* and *Durusdinium* from assays performed on series of counted symbiotic cells isolated from corals (see⁵⁰), which allows for the detection of background populations. Each sample was analyzed twice on the same plate, as one technical replicate, and averaged when the variation between both Ct values was not exceeding 1. An inter-plate calibrator (i.e. positive control with known concentrations and Ct values: mixture of DNA from different Symbiodiniaceae genera⁵⁰, tested in triplicates (one technical replicate), was added to each plate to calibrate Ct values (performed manually on the MxPro software to set the fluorescent threshold to a fixed Ct value) among different plates of coral DNA samples. The proportion of Symbiodiniaceae genera was then estimated by measuring the symbiont/host ratio (S/H ratio) between gene copy numbers of the Symbiodiniaceae 28S and the coral 18S rRNA gene copy numbers in each colony (transformed by $\log +1$). This enabled the simultaneous comparison of Symbiodiniaceae genera within and amongst coral DNA extracts.

Defining the stability of Symbiodiniaceae communities. Based on the presence over time of each Symbiodiniaceae genus in each surveyed coral colony, we defined an arbitrary 'genus stability status', as follows: 1) 'Permanent' (detected in more than 80% of sampling timepoints) and 2) 'non-permanent' (detected in less than or equal to 80% of sampling timepoints) subdivided into 'temporal' (detected in more than two consecutive sampling timepoints) or 'sporadic' (detected in less than three consecutive sampling timepoints) based on the global genera distribution compared to random distribution (SI 2).

Statistical analysis. For each Symbiodiniaceae genus that was quantified in any given sample, the S/H ratios were estimated and $\log +1$ transformed for further analyses. Differences in S/H ratio of stable Symbiodiniaceae genera were tested among coral species and study sites using either analyses of variance (ANOVA) in case of homogeneity of variance; or non-parametric Kruskal-Wallis tests on ranks.

Symbiodiniaceae genus dynamics were estimated for each coral host by the calculation of the difference of S/H ratio of two successive sampling times t_n and t_{n+1} (genus i , sampling time n : $\Delta_{\text{genus } i, n} = [S_i/H]_{t_{n+1}} - [S_i/H]_{t_n}$). Similarly, the delta values of each environmental parameter (from Table 1 in⁶³) were calculated for each period (parameter j : $\Delta_j = [j]_{t_{n+1}} - [j]_{t_n}$), and then combined to consider the overall Environmental Context (EC) at each period. A hierarchical clustering of ECs was done using Euclidian metrics and the Ward method, yielding seven clusters, each characterized by a unique set of environmental variations (Fig. 3).

All statistical analyses were performed using R software (R Foundation for Statistical Computing, version 2.15) using the package 'stats' for the ANOVAs (normality and homoscedasticity of variances screened) and corresponding pairwise *posthoc* Tukey's tests or chi-squared tests, and simple or multiple linear regressions. For all analyses, the confidence interval was set to 0.95.

Results

In total, the composition of Symbiodiniaceae genera from 20 *P. acuta*, 20 *P. rus*, and 16 *A. cytherea* colonies were screened over a 10 to 18-month survey at four reef locations (Table 1). Symbiodiniaceae genera *Symbiodinium*, *Cladocopium* and *Durusdinium* were recorded at least once in every coral species, while clades E and F were never recorded. Genus *Breviolum* was exclusively detected in *P. acuta*, and only at three occasions, always as background population representing less than 5% of the relative proportion of total Symbiodiniaceae^{47,50,51} (S/H ratio: <5 28S copy number in $\log +1$, Fig. 2).

Individual coral colonies exhibit a stable S/H ratio of permanent Symbiodiniaceae genera over time. Symbiodiniaceae genera *Cladocopium* and *Durusdinium* are the sole permanent genera in *P. rus* (*Cladocopium* permanence, hereafter *Cladocopium*-pattern) and *P. acuta* (*Durusdinium* permanence, hereafter

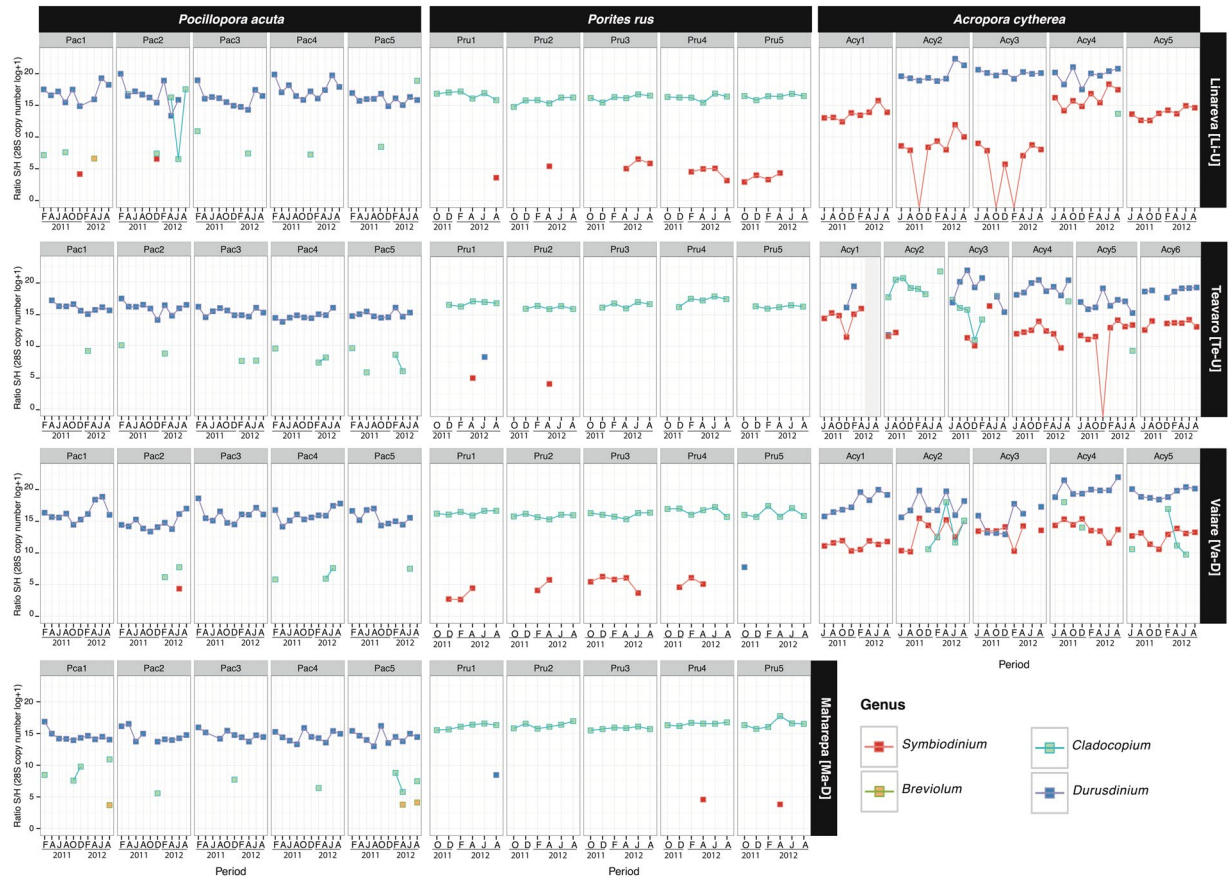


Figure 2. Spatio-temporal survey of Symbiodiniaceae of genus *Symbiodinium*, *Breviolum*, *Cladocopium* and *Durusdinium* associated in 56 tagged coral colonies of 3 coral species (*Pocillopora acuta* [Pac], *Porites rus* [Pru] and *Acropora cytherea* [Acy]) at four reef sites (Linareva [Li], Teavaro [Te], Vaiare [Va] and Maharepa [Ma]) from February 2011 to August 2012. Between 5 and 6 tagged colonies were sampled for each coral species from each study reef site, each represented by a panel (e.g. Pac1 at Li is colony 1 of *P. acuta* at Linareva).

Durusdinium-pattern), respectively (Fig. 2). *Porites rus* also harbored non-permanent background populations of *Symbiodinium* and *Durusdinium*, while *P. acuta* harbored populations of *Symbiodinium*, *Breviolum* and *Cladocopium*.

In addition to the specificity of Symbiodiniaceae genus-patterns, each host colony was quantified with a specific sustainable S/H ratio range of its associated permanent genera over time (Fig. 2). *Pocillopora acuta* exclusively associated with *Durusdinium*-pattern communities with significant variation among colonies (Table 2) and sites (ANOVA: $df = 3, F = 38.391, P < 0.001$), leading to a total of nine distinct groups (Table 2). The recorded range of S/H ratio of *Durusdinium* were highest in Linareva (mean: $16.6 \pm 1.5S/H$ ratio), lowest in Maharepa (mean: $14.6 \pm 0.8S/H$ ratio) and intermediate at Vaiare and Teavaro (mean: 15.7 ± 1.3 and $15.3 \pm 0.8S/H$ ratio, respectively). In *P. rus* intra-specific variation of *Cladocopium*-pattern community composition was also significant, albeit in lower magnitude (Table 2), with a total of 19 colonies partitioned into five groups varying between 17.2 ± 0.6 to $15.7 \pm 0.6S/H$ ratio without significant site effect (ANOVA: $df = 3, F = 2.56, P = 0.06$). In addition, for the single *P. rus* colony that also harbored *Symbiodinium* as permanent member of its dinoflagellate community (*Cladocopium* and *Symbiodinium*-pattern), the S/H ratio of *Cladocopium* fell within the same range as for four other colonies with *Cladocopium*-pattern (Table 2; Sign.4 at Maharepa, Teavaro and Vaiare). Conversely, intraspecific variation in Symbiodiniaceae community composition was most pronounced in *A. cytherea* (Fig. 2): the majority of colonies ($n = 10$) simultaneously hosted *Durusdinium* and *Symbiodinium* (*Durusdinium* and *Symbiodinium*-pattern); three colonies hosted only genus *Symbiodinium* (*Symbiodinium*-pattern); two colonies hosted only genus *Durusdinium*, and one colony hosted only genus *Cladocopium*. Among the various symbiotic patterns observed in *A. cytherea*, significantly distinct groups were identified based on the S/H ratios (ANOVA; *Symbiodinium*: $df = 12, F = 12.82$ and clade D: $df = 11, F = 9.3, p < 0.001$). Table 2 shows 9 distinct groups among the 10 *Symbiodinium* and *Durusdinium*-pattern colonies, 2 distinct groups among the 3 *Symbiodinium*-pattern colonies and 2 distinct groups between 2 *Durusdinium*-pattern colonies. The S/H ratio range of permanent genera was similar for *Symbiodinium* regardless of sites ($df = 2, F = 2.004, P = 0.141$), and even following its punctual loss (e.g. Acy2 at Li October 2011). In contrast, the S/H ratio range for *Durusdinium* was significantly different among study sites (ANOVA: clade D: $df = 2, F = 14.775, P < 0.001$). Overall, the colonies from Linareva characterized by a genus pattern involving *Durusdinium* displayed the highest ranges of S/H ratio (Table 2; mean 'genus 1 v': $19.9 \pm 1.0 S/H$ ratio), when compared to those detected at sites Teavaro and Vaiare (from 15.2 ± 2.1 to

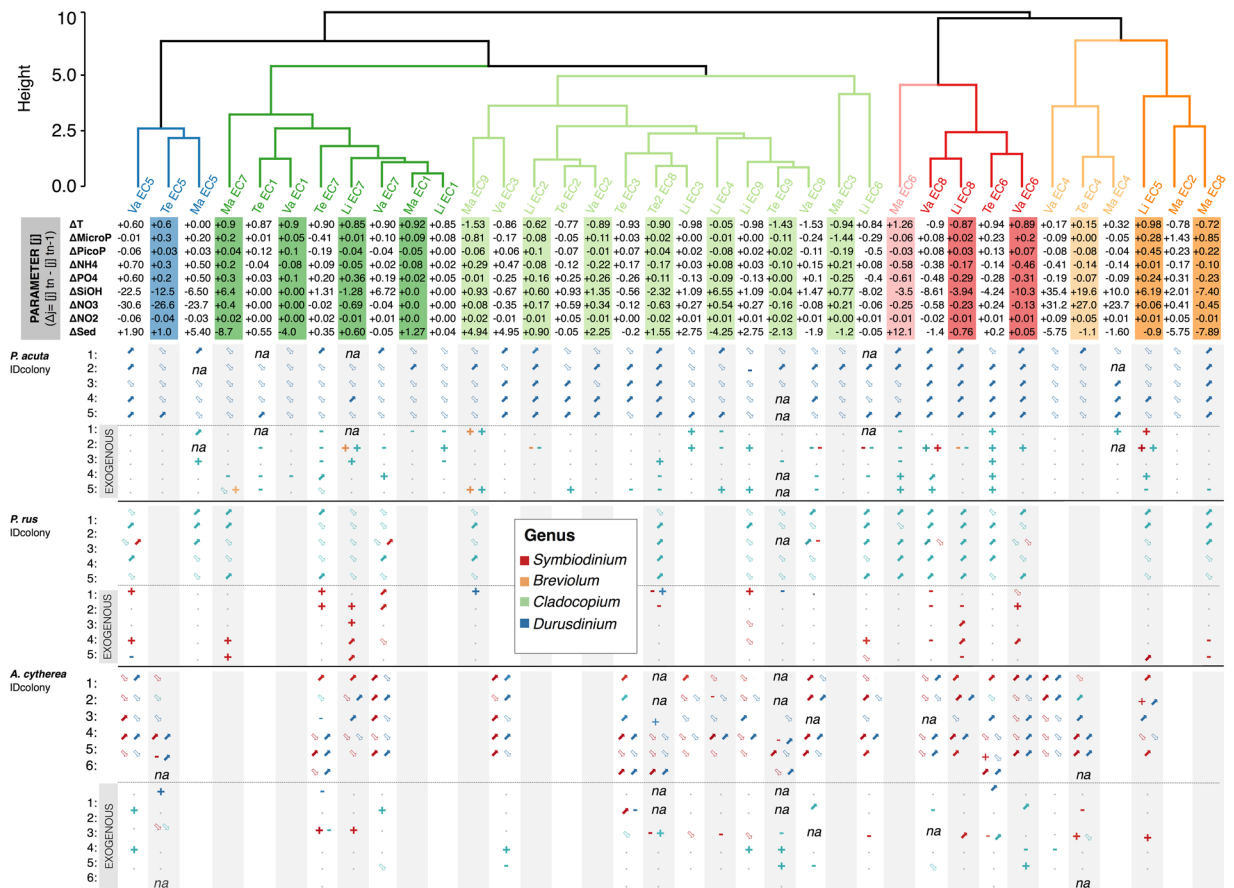


Figure 3. Results of the cluster analysis of environmental contexts from reef sites Linareva (Li), Teavaro (Te), Maharepa (Ma) and Vaiare (Va) and the corresponding dynamics of Symbiodiniaceae genera associated to *Pocillopora acuta* (PAC), *Porites rus* (PRU) and *Acropora cytherea* (ACY) from February 2011 to August 2012, between two successive sampling times $tn+1$ and tn . The Hierarchical Clustering Analysis was applied on the matrix with delta values of each environmental parameters using the Euclidean distance coefficient to compare ECs and Ward’s method of minimum variance to assemble clusters (i.e. package ‘pvclust’ in R 101). ECs are coded according to the chronological sampling periods as follows: EC1 (Feb11–Apr11), EC2 (Apr11–Jun11), EC3 (Jun11–Aug11), EC4 (Aug11–Oct11), EC5 (Oct11–Dec11), EC6 (Dec11–Feb12), EC7 (Feb12–Apr12), EC8 (Apr12–Jun12) and EC9 (Jun12–Aug12). The analysis is based on the quantitative variation of the different environmental parameters of sea surface temperature (T), Phytoplankton $>2\mu\text{m}$ (Micro) and $<2\mu\text{m}$ (PicoP), ammonium (NH_4^+), phosphate (PO_4^{3-}), silicate (SiOH), nitrite (NO_3^-), nitrate (NO_2^-) and sedimentation (Sed), described in⁶³. The Symbiodiniaceae genus dynamics recorded into different tagged coral hosts dissociated with their label number (IDcol) from different species are described through their quantitative variation (increase: ‘↑’, decrease: ‘↓’, loss: ‘−’ or re-acquisition: ‘+’) of permanent clades and/or non-permanent clades (exogenous exchanges with temporary and sporadic clades).

20.1 ± 1.0 S/H ratio; Table 2). *Acropora cytherea* colonies associated with a stable *Cladocopium*-pattern community had a mean S/H ratio of 19.6 ± 1.5.

Coral hosts harbour temporary and/or sporadic Symbiodiniaceae genera. The abundance and diversity of non-permanent Symbiodiniaceae genera (temporary and/or sporadic) was highly variable among coral species in the study period. The majority of *P. acuta* colonies harboured sporadic clades (18/20), in contrast with less than half of the colonies in *P. rus* (9/20) and *A. cytherea* (7/16) (chi-squared test: $\chi^2 = 11.19$ df = 2, $P = 0.004$). Despite the stability of the *Durusdinium*-pattern observed in *P. acuta*, this coral species was simultaneously flexible in its ability to associate with up to three additional sporadic genera (*Symbiodinium*, *Breviolum* and *Cladocopium* simultaneously in Pac1 at Li; or individually with *Symbiodinium* in Pac2 from sites Li and Va; *Breviolum* in Pac1 and Pca5 at site Ma; and *Cladocopium* in 17 colonies; Fig. 2). Similarly, *P. rus* displayed a stable *Cladocopium*-pattern with occasional sporadic *Symbiodinium* ($n = 7$; e.g. Pru2 at Li and Te, Pru4 at Ma) and/or *Durusdinium* ($n = 3$; i.e. Pru1 at Te, Pru5 at Va, Pru1 at Ma). *Acropora cytherea* had complex Symbiodiniaceae community patterns with occasional sporadic *Symbiodinium* ($n = 2$; Acy2 and Acy3 at Te), *Cladocopium* ($n = 4$; e.g. Acy4 at Li, Te and Va, Acy5 at Te) and/or *Durusdinium* ($n = 1$; Acy1 at Te). Nearly all of the sporadic Symbiodiniaceae genus detections appeared with S/H ratio quantities much lower than the ones detected in permanent genera, especially for *P. acuta* and *P. rus*.

Coral-algae	Group	Post-hoc TUKEY											Site (ID colony)				
		Genus 1					med ± SD	Genus 2						med ± SD			
		v	w	x	y	z	*	v	w	x	y	z	i	*			
<i>Pocillopora acuta</i>																	
<i>Durusdinium</i>	Sign. 1	•					17.6 ± 1.4								Li (#4)		
	Sign. 2	•	•				17.0 ± 1.4								Li (#1)		
	Sign. 3	•	•	•			16.7 ± 1.9								Li (#2)		
	Sign. 4	•	•	•	•		16.3 ± 1.4								Va (#1)		
	Sign. 5	•	•	•	•	•	16.0 ± 1.0									Li (#3, #5)	
																	Va (#3, #4)
																	Te (#1, #2)
	Sign. 6		•	•	•	•	15.4 ± 0.8								Va (#5)		
	Sign. 7			•	•	•	14.9 ± 0.5									Te (#3)	
Sign. 8				•	•	14.7 ± 0.9									Te (#5)		
Sign. 8															Ma (#2, #3)		
Sign. 9					•	14.5 ± 0.8									Te (#4)		
<i>Porites rus</i>																	
<i>Cladocopium</i>	Sign. 1	•					17.2 ± 0.6								Te (#4)		
	Sign. 2	•	•				16.7 ± 0.3								Te (11)		
	Sign. 3	•	•	•			16.4 ± 0.5									Li (#1, #3, #4, #5)	
																Va (#1, #4, #5)	
																Ma (#2, #4, #5)	
	Sign. 4			•	•		16.0 ± 0.4									Te (#3, #5)	
															Ma (#1, #3)		
Sign. 5				•		15.7 ± 0.6									Te (#2)		
<i>Cladocopium</i> > <i>Symbiodinium</i>	Sign. 6			•	•		15.9 ± 0.4						•	5.8 ± 1.0	Va (#3)		
<i>Acropora cytherea</i>																	
<i>Durusdinium</i> > <i>Symbiodinium</i>	Sign. 1	•					19.7 ± 1.2	•						16.1 ± 1.4	Li (#4)		
	Sign. 2	•					20.1 ± 1.0		•					14.0 ± 1.2	Va (#4)		
	Sign. 3	•					19.9 ± 1.3				•			9.2 ± 1.4	Li (#2)		
	Sign. 4	•	•				19.3 ± 0.9	•	•					12.4 ± 1.1	Va (#5), Te (#4)		
	Sign. 5	•	•	•			18.8 ± 0.6	•						13.6 ± 0.6	Te (#6)		
	Sign. 6	•	•	•			17.9 ± 1.6			•	•			11.3 ± 0.6	Va (#1)		
	Sign. 7	•	•	•			17.4 ± 1.6	•	•					13.2 ± 2.1	Va (#2)		
	Sign. 8			•	•		16.8 ± 1.2	•	•					12.6 ± 1.1	Te (#5)		
	Sign. 9				•		15.2 ± 2.1	•	•					13.2 ± 1.3	Va (#3)		
<i>Symbiodinium</i>	Sign. 10							•	•					14.5 ± 1.6	Te (#1)		
	Sign. 11								•					13.7 ± 0.9	Li (#1, #5)		
<i>Durusdinium</i>	Sign. 12	•					20.0 ± 0.4								Li (#3)		
	Sign. 13	•	•	•			18.9 ± 2.3								Te (#3)		
<i>Cladocopium</i>	Sign. 14	•					19.6 ± 1.5								Te (#2)		

Table 2. Symbiodiniaceae signatures (GROUP) of each surveyed coral colony (in rows) from *Pocillopora acuta*, *Porites rus*, and *Acropora cytherea*, based on significant differences in the quantities of their permanent Symbiodiniaceae genera (ANOVA analyses on genus quantity among coral hosts and their corresponding *post-hoc* Tukey tests $p < 0.05$). The significant groups discriminated with the *Post-hoc* Tukey tests are indicated with the following lowercase letters: v, w, x, y, z, i. Reef sites are coded as follows: Linareva (Li), Teavaro (Te), Vaiare (Va) and Maharepa (Ma).

In contrast to sporadic genera, temporary genera were only harbored by low numbers of colonies, and their frequency did not significantly differ among coral species: *P. acuta* (1/20; Pac2 at Li), *P. rus* (5/20; Pru3, Pru4 and Pru5 at Li and Pru1 and Pru4 at Va) and *A. cytherea* (3/16; Acy3 at Te, Acy2 and Acy5 at Va) (chi-squared test: $\chi^2 = 3.08$, $df = 2$, $P = 0.214$). Temporary clades had a low diversity in all coral species: only *Cladocopium* in *P. acuta* (Pac2 at Li), only *Symbiodinium* in *P. rus* ($n = 5$ colonies), and *Cladocopium* or *Symbiodinium* in *A. cytherea*, in three colonies (e.g. Acy3 at Te and Acy5 at Va) and one colony (Acy3 at Li), respectively.

Dynamics of Symbiodiniaceae genera in response to environmental variation. The permanent Symbiodiniaceae genus-patterns of each coral species were similar among study sites, despite the environmental contrasts (Fig. 3). In particular, no significant correlation was detected between the S/H ratio of Symbiodiniaceae genera and any environmental parameter or sites.

There were no common patterns in Symbiodiniaceae genus dynamics (S/H ratio variation during a period = $\Delta_{\text{genus i, n}}$) among and within species when correlated to clusters of environmental contexts, except for EC8 (Figs 2 and 3). This environmental context cluster was characterized by a decrease in sediment rates, a decrease in sea surface temperature (T) and nutrient concentrations (i.e. ammonium [NH₄⁺], phosphate [PO₄³⁻], silicates [SiOH], nitrates [NO₃⁻] and nitrites [NO₂⁻]) and an increase in phytoplankton concentrations (micro- and pico- fractions). Indeed, between April and June 2012, there was a significant interaction between site and sampling time for the permanent genus *Durusdinium* in *P. acuta* and a significant effect of sampling time for *Cladocopium* in *P. rus* (Table S1). At that period, we observed a significant increase in *Durusdinium* in *P. acuta* at all four reef sites (Fig. 3). A pairwise analysis revealed that the variations of sea surface temperature, PO₄³⁻, SiOH and NO₂⁻ were significantly and negatively correlated with changes in the abundance of *Durusdinium* (Fig. S2a). EC8 was also significantly associated with changes in the abundance of *Cladocopium* in *P. rus*, which increased in nearly all tagged colonies (17/20) from undisturbed or disturbed sites, and the pairwise analysis showed that PO₄³⁻ drove this negative correlation (Fig. S2b).

In contrast, the permanent genus *Symbiodinium* and/or *Durusdinium* S/H ratio in *A. cytherea* did not show any significant variations with respect to EC (Fig. S2c).

The overall distribution of non-permanent genera did not significantly differ from random patterns in the study period in any of the three coral species ($p > 0.05$ compared to Binomial and Poisson distributions, Supplementary Information SI 2). Variations of *Symbiodinium* abundance in *P. rus* were correlated to changes in SST, PO₄³⁻ and NH₄⁺ (Fig. S2b), however the dynamics of temporary or sporadic genera (appearance or disappearance; Fig. 2) did not show clear patterns in relation to any particular environmental change (within or between ECs, Fig. 3) for any of the species (Fig. S1a–c).

Discussion

The choice of the qPCR assay employed in the present study was based on its ability to detect Symbiodiniaceae genera *in hospite* at the level of ≤ 200 28S copies, which approximates the number of 28S copies in a single algal cell⁵⁰. The combination of this highly sensitive method with a sampling every two months of 56 tagged colonies of three coral host species enabled us to identify putative inferences of both newly acquired Symbiodiniaceae genera (switching) and shifts in the abundance of genera (shuffling) over a period that spans multiple seasons. The overall dataset provides a comprehensive picture of the diversity and quantitative variations of Symbiodiniaceae in various coral hosts over time and in different environments.

Random acquisition and short-term maintenance of Symbiodiniaceae. The detection of *de novo* Symbiodiniaceae genera in all three coral species suggests that symbiont switching may be a common natural phenomenon in healthy adult scleractinians. Interestingly, while clade F was present in the surrounding environment⁵⁰, it was never detected in coral samples, indicative of an active control of symbiont uptake by the host. Previous studies suggested that Symbiodiniaceae switching occurs readily in juvenile stages²³, while in adults it only happens when the health of the colony is compromised during infected experimental conditions^{49,65} or *in situ*³⁶. While exogenous symbiont acquisition may be more common in healthy adult corals than previously thought, the rate at which it occurs varies substantially among species. Of the three coral species studied here, *P. acuta* showed a significantly higher affinity to integrate sporadic clades compared to *P. rus* and *A. cytherea*. This interspecific difference may reflect divergent strategies for coping with fluctuating environmental conditions. A higher flexibility in symbiont switching in *P. acuta* may be a biological mechanism adapted to compensate for the dominance of thermally tolerant but low efficiency genus *Durusdinium*^{66–70} in this coral's microbiome. Supportive of the symbiont switching hypothesis our study also found that six out of twenty (i.e. 30%) *Cladocopium*-dominated *P. rus* colonies acquired a background population of *Symbiodinium* over several consecutive months at some study reef sites but not for all surveyed colonies and without any temporal patterns. These results contradict previous reports^{71–73} that describe an exclusive association of *P. rus* with a single ITS2 genotype (C15 of genus *Cladocopium*) and could suggest a potential ecological role of the cryptic *Symbiodinium* in this coral species. Thus, while it is impossible to rule out that some of the *de novo* genera are merely consumed Symbiodiniaceae that are not in symbiosis with the coral (see⁴⁷), these can also be the first steps of 'symbiont switching' (Fig. 2). Although apparently not driven by external factors (within the study period), such random sporadic and/or temporary symbionts switching might strongly impact the fitness and behavior of coral colonies. This has been previously shown for *A. cytherea* in which the external acquisition of *Durusdinium* was correlated by the loss of a *Vibrio spp.*³⁶. Furthermore, our results suggest that the mechanism of acquisition and the maintenance of non-permanent Symbiodiniaceae genera is largely labile (e.g. change in Pattern Recognition Receptors, or the lack of their maintenance^{74,75}), colony dependent and extends the mechanism of symbiont acquisition/selection already observed in symbiont-free offspring⁷⁶.

Dynamics of permanent Symbiodiniaceae genera. Variations of the abundance of permanent Symbiodiniaceae genera in correlation with environmental changes suggests that the holobiont can rapidly modulate its autotrophic activity by increasing its Symbiodiniaceae densities to counterbalance conditions for limited heterotrophy. For example, one event of putative Symbiodiniaceae shuffling was observed between April and June 2012 in all tagged *P. acuta* (*Durusdinium*) colonies and at all four reef sites, as well as in *P. rus* (*Cladocopium*) colonies at the Linareva (undisturbed) and Vaiare (disturbed) sites. This period was characterized by a decrease

in sea surface temperature and in nutrient concentrations (i.e. inorganic nitrogen, phosphate, silicates) and an increase in phytoplankton concentration (micro- and pico- fractions). Previous reports (reviewed in⁷⁷) stated that increased inorganic nitrogen levels boost Symbiodiniaceae densities under high irradiance conditions, as they are normally nitrogen-limited, while increased inorganic phosphate does not have a major effect. Therefore, the negative correlation detected between inorganic phosphate and Symbiodiniaceae densities is unexpected and could be explained by the fact that our study was conducted *in situ*, or that other parameters not measured here drive symbiont dynamics. Alternatively, this result suggests novel mechanisms currently not fully understood.

Only one potential shuffling event was detected in this study that supports the ABH^{39,61}. Indeed, there were no clear patterns in symbiont dynamics in response to environmental changes, i.e. neither for changes in one particular environmental parameter or the combination of multiple parameters. This is consistent with previous ecological observations showing that even if coral species are able to host a large diversity of symbionts, they will not necessarily activate rapid partnership changes as a response to acute environmental change^{36,47,49,65,78}. Although changes in the abundance of non-permanent Symbiodiniaceae genera were observed in all studied coral species, our results indicate that these acquisitions are random and their maintenance limited, supporting the idea that even under environmental changes, established symbioses are highly stable over time with only transient modifications⁴⁷. This finding has also been highlighted in a recent reciprocal transplant experiment along a depth gradient⁷⁸ in which corals that vertically transmit their symbionts reversed after several months to the original symbiotic communities even if these were well-suited to the transplantation depth.

Long term stability of permanent clades: coral colonies with unique Symbiodiniaceae signatures. The stability and host specificity for particular Symbiodiniaceae genera has been well-established for most coral taxa in both tropical^{36,44–46,78,79} and high-latitude^{147,80,81} regions. In the present study, both coral species that vertically transmit their symbionts (i.e. from parent to offspring) displayed strict host specificity for a single permanent clade (*Durusdinium* in *P. acuta* and *Cladocopium* in *P. rus*), whereas the horizontally transmitting coral species *A. cytherea* exhibited multiple host clade-patterns (*Durusdinium*/*Symbiodinium*, *Symbiodinium*, *Durusdinium* or *Cladocopium*). These findings corroborate the hypothesis that the reproductive strategy of corals plays a key role in the establishment of host-symbiont associations, with more specific and stable patterns characteristic for vertically transmitting ‘symbiont specialist’ corals^{45,82–85}, compared with the enhanced flexibility often encountered in horizontally transmitting or ‘symbiont generalist’ corals^{80,83,85}.

Most notably, this study also reveals that the coral-Symbiodiniaceae specificity is a trait that is shaped at the colony scale. Permanent Symbiodiniaceae genera are regulated by the host in a non-random manner, within a specific density range, which we coined ‘Symbiodiniaceae signature’. This signature reflects high intraspecific variability in symbiont communities in all three-coral species, which enables distinguishing individual coral colonies by their microbiome. In non-stressful conditions of symbiosis the Symbiodiniaceae densities are regulated in the host at an equilibrium state to sustain both partners in a position of mutual benefit⁸⁶. Therefore, based on the diversity of Symbiodiniaceae signatures observed in the present study, we suggest that the symbiosis equilibrium state might be host dependent. This host regulation can be synergistically affected by environmental filtering. For example, *P. acuta* and *A. cytherea* from the undisturbed reef of Linareva had higher *Durusdinium* quantities in their Symbiodiniaceae signatures. It is potentially one way for the hosts to compensate for the poor contribution of *Durusdinium* symbionts to the holobiont’s metabolism, as previously described in non-stressful conditions^{53,68,69}. The control of Symbiodiniaceae community composition can be reached through intrinsic and extrinsic factors (reviewed in^{87,88}), including direct expulsion^{64,89} or *in hospite* degradation of Symbiodiniaceae cells (e.g. necrosis, apoptosis;⁸⁷). Regardless of the control mechanism involved, each individual coral colony harbors a specific suite and abundance of Symbiodiniaceae genera that likely reflect on their unique plasticity in endosymbiont regulation.

Our findings indicate that each holobiont is characterized by a host with a specific Symbiodiniaceae signature of permanent genera and a constitutive flexibility to associate with additional temporary or sporadic genera. In the context of the current model of Symbiodiniaceae-coral winnowing^{14,90–94}, this new theory of Symbiodiniaceae signatures suggests the existence of regulatory mechanisms within the host that enable them to maintain and regulate their permanent Symbiodiniaceae genera homeostasis within a particular range. When identical genera are present but in different quantity ranges, this signature can be considered as distinct amounts of Symbiodiniaceae ‘genomes’ modulating the hologenome (*sensu*⁹⁵), which could account for differences in the host’s behavior^{92,96}. Additionally, the appearance of sporadic and/or temporary non-permanent genera in the host may contribute to the diversity of the coral hologenome (see⁹⁵). This diversity may contribute to explaining intraspecific differences in the ecological success of distinct holobionts (Hologenome Dependent Susceptibility) and may constitute an important factor underpinning their resistance or resilience to environmental stressors.

As ocean warming progresses, more research on the ecological relevance of particular coral hologenomes, including the Symbiodiniaceae signature within and among coral species (e.g. physiological or gene expression responses to multiple stressors), will be critically important to better predict the fate of coral reefs and to assist in the elaboration of effective conservation plans.

References

1. Coffroth, M. A., Lewis, C. F., Santos, S. R. & Weaver, J. L. Environmental populations of symbiotic dinoflagellates in the genus *Symbiodinium* can initiate symbioses with reef cnidarians. *Current Biology* **16**, 985–987 (2006).
2. Pochon, X. *et al.* Comparison of endosymbiotic and free-living *Symbiodinium* (Dinophyceae) diversity in a Hawaiian reef environment. *J. Phycol.* **46**, 53–65 (2010).
3. LaJeunesse, T. C. *et al.* High diversity and host specificity observed among symbiotic dinoflagellates in reef coral communities from Hawaii. *Coral Reefs* **23**, 596–603 (2004).

4. Stat, M., Carter, D. & Hoegh-Guldberg, O. The evolutionary history of *Symbiodinium* and scleractinian hosts-symbiosis, diversity, and the effect of climate change. *Perspect. Plant Ecol. Evol. Syst.* **8**, 23–43 (2006).
5. LaJeunesse, T. C. *et al.* Systematic revision of Symbiodiniaceae highlights the antiquity and diversity of coral endosymbionts. *Curr. Biol.* **28**, 2570–2580e6 (2018).
6. Pochon, X., Putnam, H. M. & Gates, R. D. Multi-gene analysis of *Symbiodinium* dinoflagellates: a perspective on rarity, symbiosis, and evolution. *PeerJ* **2**, e394 (2014).
7. LaJeunesse, T. C. Validation and description of *Symbiodinium microadriaticum*, the type species of *Symbiodinium* (Dinophyta). *Journal of Phycology* **53**, 1109–1114 (2017).
8. Baird, A. H., Guest, J. R. & Willis, B. L. Systematic and biogeographical patterns in the reproductive biology of scleractinian corals. *Annu. Rev. Ecol. Evol. Syst.* **40**, 551–571 (2009).
9. Muscatine, L. & Porter, J. W. Reef corals: mutualistic symbioses adapted to nutrient-poor environments. *Bioscience* **27**, 454–460 (1977).
10. Furla, P., Galgani, I., Durand, I. & Allemand, D. Sources and mechanisms of inorganic carbon transport for coral calcification and photosynthesis. *J. Exp. Biol.* **203**, 3445–3457 (2000).
11. Whitehead, L. F. & Douglas, A. E. Metabolite comparisons and the identity of nutrients translocated from symbiotic algae to an animal host. *J. Exp. Biol.* **206**, 3149–3157 (2003).
12. Grover, R., Maguer, J.-F., Allemand, D. & Ferrier-Pagès, C. Uptake of dissolved free amino acids by the scleractinian coral *Stylophora pistillata*. *J. Exp. Biol.* **211**, 860–865 (2008).
13. Burriesci, M. S., Raab, T. K. & Pringle, J. R. Evidence that glucose is the major transferred metabolite in dinoflagellate-cnidarian symbiosis. *J. Exp. Biol.* **215**, 3467–3477 (2012).
14. Davy, S. K., Allemand, D. & Weis, V. M. Cell biology of cnidarian-dinoflagellate symbiosis. *Microbiol. Mol. Biol. Rev.* **76**, 229–261 (2012).
15. Heron, S. F., Maynard, J. A., Van Hooidonk, R. & Eakin, C. M. Warming trends and bleaching stress of the world's coral reefs 1985–2012. *Sci. Rep.* **6**, 38402 (2016).
16. Hughes, T. P. *et al.* Coral reefs in the Anthropocene. *Nature* **546**, 82–90 (2017).
17. Camp, E. F. *et al.* The future of coral reefs subject to rapid climate change: lessons from natural extreme environments. *Front. Mar. Sci.* **5**, 1–21 (2018).
18. Hughes, T. P. *et al.* Spatial and temporal patterns of mass bleaching of corals in the Anthropocene. *Science* **359**, 80–83 (2018).
19. Yost, D. M. *et al.* Diversity in skeletal architecture influences biological heterogeneity and *Symbiodinium* habitat in corals. *Zoology* **116**, 262–269 (2013).
20. Baker, A. C. Flexibility and specificity in coral-algal symbiosis: diversity, ecology, and biogeography of *Symbiodinium*. *Annu. Rev. Ecol. Evol. Syst.* **34**, 661–689 (2003).
21. Silverstein, R. N., Correa, A. M. S. & Baker, A. C. Specificity is rarely absolute in coral-algal symbiosis: implications for coral response to climate change. *Proc. R. Soc. B Biol. Sci.* **279**, 2609–2618 (2012).
22. Baird, A. H., Bhagooli, R., Ralph, P. J. & Takahashi, S. Coral bleaching: the role of the host. *Trends Ecol. Evol.* **24**, 16–20 (2009).
23. Mieog, J. C. *et al.* The roles and interactions of symbiont, host and environment in defining coral fitness. *PLoS One* **4**, e6364 (2009).
24. Barshis, D. J. *et al.* Protein expression and genetic structure of the coral *Porites lobata* in an environmentally extreme Samoan back reef: does host genotype limit phenotypic plasticity? *Mol. Ecol.* **19**, 1705–20 (2010).
25. Wall, C. B. *et al.* The effects of environmental history and thermal stress on coral physiology and immunity. *Mar. Biol.* **165**, 1–15 (2018).
26. Berkelmans, R. & Van Oppen, M. J. H. The role of zooxanthellae in the thermal tolerance of corals: a 'nugget of hope' for coral reefs in an era of climate change. *Proc. R. Soc. B Biol. Sci.* **273**, 2305–2312 (2006).
27. Howells, E. J. *et al.* Coral thermal tolerance shaped by local adaptation of photosymbionts. *Nat. Clim. Chang.* **2**, 116–120 (2012).
28. LaJeunesse, T. C., Smith, R. T., Finney, J. & Oxenford, H. Outbreak and persistence of opportunistic symbiotic dinoflagellates during the 2005 Caribbean mass coral 'bleaching' event. *Proc. R. Soc. London B Biol. Sci.* **276**, 4139–4148 (2009).
29. Cooper, T. F. *et al.* Environmental factors controlling the distribution of *Symbiodinium* harboured by the coral *Acropora millepora* on the Great Barrier Reef. *PLoS One* **6**, e25536 (2011).
30. Cunning, R., Muller, E. B., Gates, R. D. & Nisbet, R. M. A dynamic bioenergetic model for coral-*Symbiodinium* symbioses and coral bleaching as an alternate stable state. *J. Theor. Biol.* **431**, 49–62 (2017).
31. Silverstein, R. N., Cunning, R. & Baker, A. C. Change in algal symbiont communities after bleaching, not prior heat exposure, increases heat tolerance of reef corals. *Glob. Chang. Biol.* **21**, 236–249 (2015).
32. Nitschke, M. R., Davy, S. K. & Ward, S. Horizontal transmission of *Symbiodinium* cells between adult and juvenile corals is aided by benthic sediment. *Coral Reefs* **35**, 335–344 (2016).
33. Decelle, J. *et al.* Worldwide occurrence and activity of the reef-building coral symbiont *Symbiodinium* in the open Ocean. *Curr. Biol.* **28**, 1–9 (2018).
34. Stat, M., Morris, E. & Gates, R. D. Functional diversity in coral-dinoflagellate symbiosis. *Proc. Natl. Acad. Sci. USA* **105**, 9256–61 (2008).
35. Quigley, K. M., Willis, B. L. & Bay, L. K. Maternal effects and *Symbiodinium* community composition drive differential patterns in juvenile survival in the coral *Acropora tenuis*. *R. Soc. Open Sci.* **3**, 160471 (2016).
36. Rouzé, H., Lecellier, G., Saulnier, D. & Berteaux-Lecellier, V. *Symbiodinium* clades A and D differentially predispose *Acropora cytherea* to disease and *Vibrio* spp. colonization. *Ecol. Evol.* **6**, 560–572 (2016).
37. Silverstein, R. N., Cunning, R. & Baker, A. C. Tenacious D: *Symbiodinium* in clade D remain in reef corals at both high and low temperature extremes despite impairment. *J. Exp. Biol.* **220**, 1192–1196 (2017).
38. Torda, G. *et al.* Rapid adaptive responses to climate change in corals. *Nat. Clim. Chang.* **7**, 627–636 (2017).
39. Buddemeier, R. W. & Fautin, D. G. Coral bleaching as an adaptive mechanism. *Bioscience* **43**, 320–326 (1993).
40. Baker, D. M., Weigt, L., Fogel, M. & Knowlton, N. Ancient DNA from coral-hosted *Symbiodinium* reveal a static mutualism over the last 172 years. *PLoS One* **8**, e55057 (2013).
41. Lin, S. *et al.* The *Symbiodinium kawagutii* genome illuminates dinoflagellate gene expression and coral symbiosis. *Science* **240**, 13201–13202 (2015).
42. Lin, Z. *et al.* Transcriptome profiling of *Galaxea fascicularis* and its endosymbiont *Symbiodinium* reveals chronic eutrophication tolerance pathways and metabolic mutualism between partners. *Sci. Rep.* **7**, 42100 (2017).
43. Aranda, M. *et al.* Genomes of coral dinoflagellate symbionts highlight evolutionary adaptations conducive to a symbiotic lifestyle. *Sci. Rep.* **6**, 39734 (2016).
44. Thornhill, D. J., Fitt, W. K. & Schmidt, G. W. Highly stable symbioses among western Atlantic brooding corals. *Coral Reefs* **25**, 515–519 (2006).
45. Thornhill, D. J., LaJeunesse, T. C., Kemp, D. W., Fitt, W. K. & Schmidt, G. W. Multi-year, seasonal genotypic surveys of coral-algal symbioses reveal prevalent stability or post-bleaching reversion. *Mar. Biol.* **148**, 711–722 (2006).
46. Stat, M., Loh, W. K. W., LaJeunesse, T. C., Hoegh-Guldberg, O. & Carter, D. A. Stability of coral-endosymbiont associations during and after a thermal stress event in the southern Great Barrier Reef. *Coral Reefs* **28**, 709–713 (2009).
47. Lee, M. J. *et al.* Most low-abundance "background" *Symbiodinium* spp. are transitory and have minimal functional significance for symbiotic corals. *Microb. Ecol.* **71**, 771–783 (2016).

48. Little, A. F., Van Oppen, M. J. H. & Willis, B. L. Flexibility in algal endosymbioses shapes growth in reef corals. *Science*. **304**, 1492–1494 (2004).
49. Coffroth, M. A., Poland, D. M., Petrou, E. L., Brazeau, D. A. & Holmberg, J. C. Environmental symbiont acquisition may not be the solution to warming seas for reef-building corals. *PLoS One* **5**, e13258 (2010).
50. Rouzé, H. *et al.* An updated assessment of *Symbiodinium* spp. that associate with common scleractinian corals from Moorea (French Polynesia) reveals high diversity among background symbionts and a novel finding of clade B. *PeerJ* **5**, e285–556 (2017).
51. Mieog, J. C., van Oppen, M. J. H., Cantin, N. E., Stam, W. T. & Olsen, J. L. Real-time PCR reveals a high incidence of *Symbiodinium* clade D at low levels in four scleractinian corals across the Great Barrier Reef: implications for symbiont shuffling. *Coral Reefs* **26**, 449–457 (2007).
52. Correa, A. M. S., McDonald, M. D. & Baker, A. C. Development of clade-specific *Symbiodinium* primers for quantitative PCR (qPCR) and their application to detecting clade D symbionts in Caribbean corals. *Mar. Biol.* **156**, 2403–2411 (2009).
53. Cuning, R., Silverstein, R. N. & Baker, A. C. Investigating the causes and consequences of symbiont shuffling in a multi-partner reef coral symbiosis under environmental change. *Proc. R. Soc. B Biol. Sci.* **282**, 20141725 (2015).
54. Arif, C. *et al.* Assessing *Symbiodinium* diversity in scleractinian corals via next-generation sequencing-based genotyping of the ITS2 rDNA region. *Mol. Ecol.* **23**, 4418–4433 (2014).
55. Edmunds, P. J. *et al.* Long-term changes in *Symbiodinium* communities in *Orbicella annularis* in St. John, US Virgin Islands. *Mar. Ecol. Prog. Ser.* **506**, 129–144 (2014).
56. Boulotte, N. M. *et al.* Exploring the *Symbiodinium* rare biosphere provides evidence for symbiont switching in reef-building corals. *Int. Soc. Microb. Ecol. J* **10**, 2693–2701 (2016).
57. Cuning, R., Gates, R. D. & Edmunds, P. J. Using high-throughput sequencing of ITS2 to describe *Symbiodinium* metacommunities in St. John, US Virgin Islands. *PeerJ* **5**, e3472 (2017).
58. Ziegler, M. *et al.* Biogeography and molecular diversity of coral symbionts in the genus *Symbiodinium* around the Arabian Peninsula. *J. Biogeogr.* **44**, 674–686 (2017).
59. Ziegler, M., Eguiluz, V. M., Duarte, C. M. & Voolstra, C. R. Rare symbionts may contribute to the resilience of coral–algal assemblages. *ISME J* **12**, 161–172 (2017).
60. Cuning, R., Glynn, P. W. & Baker, A. C. Flexible associations between *Pocillopora* corals and *Symbiodinium* limit utility of symbiosis ecology in defining species. *Coral Reefs* **32**, 795–801 (2013).
61. Cuning, R., Silverstein, R. N. & Baker, A. C. Symbiont shuffling linked to differential photochemical dynamics of *Symbiodinium* in three Caribbean reef corals. *Coral Reefs* **37**, 145–152 (2018).
62. Schmidt-Roach, S., Miller, K. J., Lundgren, P. & Andreakis, N. With eyes wide open: a revision of species within and closely related to the *Pocillopora damicornis* species complex (Scleractinia; Pocilloporidae) using morphology and genetics. *Zool. J. Linn. Soc.* **170**, 1–33 (2014).
63. Rouzé, H., Lecellier, G., Langlade, M., Planes, S. & Berteaux-Lecellier, V. Fringing reefs exposed to different levels of eutrophication and sedimentation can support the same benthic communities. *Mar. Pollut. Bull.* **92**, 212–221 (2015).
64. Yamashita, H., Suzuki, G., Hayashibara, T. & Koike, K. Do corals select zooxanthellae by alternative discharge? *Mar. Biol.* **158**, 87–100 (2011).
65. Lewis, C. L. & Coffroth, M. A. The acquisition of exogenous algal symbionts by an octocoral after bleaching. *Science* **304**, 1490–1492 (2004).
66. Stat, M., Gates, R. D. & Clade, D. *Symbiodinium* in Scleractinian corals: a “Nugget” of hope, a selfish opportunist, an ominous sign, or all of the above? *J. Mar. Biol.* **2011**, 1–9 (2011).
67. Lesser, M. P., Stat, M. & Gates, R. D. The endosymbiotic dinoflagellates (*Symbiodinium* sp.) of corals are parasites and mutualists. *Coral Reefs* **32**, 603–611 (2013).
68. Cantin, N. E., Oppen, M. J. H., Willis, B. L., Mieog, J. C. & Negri, A. P. Juvenile corals can acquire more carbon from high-performance algal symbionts. *Coral Reefs* **28**, 405–414 (2009).
69. Baker, D. M., Andras, J. P., Jordán-Garza, A. G. & Fogel, M. L. Nitrate competition in a coral symbiosis varies with temperature among *Symbiodinium* clades. *ISME J.* **7**, 1248–51 (2013).
70. Cuning, R., Yost, D. M., Guarinello, M. L., Putnam, H. M. & Gates, R. D. Variability of *Symbiodinium* communities in waters, sediments, and corals of thermally distinct reef pools in American Samoa. *PLoS One* **10**, e0145099 (2015).
71. Fitt, W. K. *et al.* Response of two species of Indo-Pacific corals, *Porites cylindrica* and *Stylophora pistillata*, to short-term thermal stress: the host does matter in determining the tolerance of corals to bleaching. *J. Exp. Mar. Biol. Ecol.* **373**, 102–110 (2009).
72. Fabricius, K. E. *et al.* Losers and winners in coral reefs acclimatized to elevated carbon dioxide concentrations. *Nat. Clim. Chang.* **1**, 165–169 (2011).
73. Putnam, H. M., Stat, M., Pochon, X. & Gates, R. D. Endosymbiotic flexibility associates with environmental sensitivity in scleractinian corals. *Proc. R. Soc. B Biol. Sci.* **279**, 4352–4361 (2012).
74. Weis, V. M., Reynolds, W. S., DeBoer, M. D. & Krupp, D. A. Host-symbiont specificity during onset of symbiosis between the dinoflagellates *Symbiodinium* spp. and planula larvae of the scleractinian coral *Fungia scutaria*. *Coral Reefs* **20**, 301–308 (2001).
75. Rodriguez-Lanetty, M., Wood-Charlson, E. M., Hollingsworth, L. L., Krupp, D. A. & Weis, V. M. Temporal and spatial infection dynamics indicate recognition events in the early hours of a dinoflagellate–coral symbiosis. *Mar. Biol.* **149**, 713–719 (2006).
76. Wolfowicz, I. *et al.* *Aiptasia* sp. larvae as a model to reveal mechanisms of symbiont selection in cnidarians. *Sci. Rep.* **6**, 1–12 (2016).
77. Fabricius, K. E. Effects of terrestrial runoff on the ecology of corals and coral reefs: review and synthesis. *Mar. Pollut. Bull.* **50**, 125–46 (2005).
78. Sampayo, E. M. *et al.* Coral symbioses under prolonged environmental change: living near tolerance range limits. *Sci. Rep.* **6**, 36271 (2016).
79. Suwa, R., Hirose, M. & Hidaka, M. Seasonal fluctuation in zooxanthellar genotype composition and photophysiology in the corals *Pavona divaricata* and *P. decussata*. *Mar. Ecol. Prog. Ser.* **361**, 129–137 (2008).
80. LaJeunesse, T. C. *et al.* Specificity and stability in high latitude eastern Pacific coral–algal symbioses. *Limnol. Oceanogr.* **53**, 719–727 (2008).
81. De Palmas, S. *et al.* *Symbiodinium* spp. associated with high-latitude scleractinian corals from Jeju Island, South Korea. *Coral Reefs* **34**, 919–925 (2015).
82. Yamamura, N. Evolution of mutualistic symbiosis: a differential equation model. *Popul. Ecol.* **38**, 211–218 (1996).
83. Loh, W. K. W., Loi, T., Carter, D. & Hoegh-guldberg, O. Genetic variability of the symbiotic dinoflagellates from the wide ranging coral species *Seriatopora hystrix* and *Acropora longicyathus* in the Indo-West Pacific. *Mar. Ecol. Prog. Ser.* **222**, 97–107 (2001).
84. Barneah, O., Weis, V. M., Perez, S. & Benayahu, Y. Diversity of dinoflagellate symbionts in Red Sea soft corals: mode of symbiont acquisition matters. *Mar. Ecol. Prog. Ser.* **275**, 89–95 (2004).
85. Stat, M., Loh, W. K. W., Hoegh-Guldberg, O. & Carter, D. A. Symbiont acquisition strategy drives host-symbiont associations in the southern Great Barrier Reef. *Coral Reefs* **27**, 763–772 (2008).
86. Muscatine, L., Falkowski, P. G., Dubinsky, Z., Cook, P. A. & McCloskey, L. R. The effect of external nutrient resources on the population dynamics of zooxanthellae in a reef coral. *Proc. R. Soc. London. B. Biol. Sci.* **236**, 311–324 (1989).
87. Wooldridge, S. A. Is the coral–algae symbiosis really ‘mutually beneficial’ for the partners? *Bioessays* **32**, 615–25 (2010).
88. Fransolet, D., Roberty, S. & Plumier, J. Establishment of endosymbiosis: the case of cnidarians and *Symbiodinium*. *J. Exp. Mar. Biol. Ecol.* **421**, 1–7 (2012).

89. Baghdasarian, G. & Muscatine, L. Preferential expulsion of dividing algal cells as a mechanism for regulating algal-cnidarian symbiosis. *Biol. Bull.* **199**, 278–86 (2000).
90. Nyholm, S. V. & Mcfall-Ngai, M. J. The winnowing: establishing the squid- *Vibrio* symbiosis. *Nat. Rev. Microbiol.* **2**, 632–642 (2004).
91. Dunn, S. R. & Weis, V. M. Apoptosis as a post-phagocytic winnowing mechanism in a coral-dinoflagellate mutualism. *Environ. Microbiol.* **11**, 268–276 (2009).
92. Ganot, P. *et al.* Adaptations to endosymbiosis in a cnidarian-dinoflagellate association: differential gene expression and specific gene duplications. *PLoS Genet.* **7**, e1002187 (2011).
93. Poland, D. & Coffroth, M. Trans-generational specificity within a cnidarian-algal symbiosis. *Coral Reefs* **36**, 119–129 (2017).
94. Mies, M. *et al.* Expression of a symbiosis-specific gene in *Symbiodinium* type A1 associated with coral, nudibranch and giant clam larvae. *R. Soc. Open Sci.* **4**, 170253 (2017).
95. Rosenberg, E. & Zilber-Rosenberg, I. Bacterial bleaching of corals leads to hologenome concept. *Microbe* **11**, 27–31 (2016).
96. Parkinson, J. E. *et al.* Gene expression variation resolves species and individual strains among coral-associated dinoflagellates within the genus *Symbiodinium*. *Genome Biol. Evol.* **8**, 665–680 (2016).

Acknowledgements

We thank members of the IFREMER from Taravao (Saulnier D., Gueguen Y., Fievet J., Santini A., C. Belliard) for fruitful discussions and technical help with qPCR, technicians from CRIOBE (Espiau B., Ung P. and Lerouvreur F.) and volunteers from Planète Urgence for their technical assistance. We are grateful to L. Hédouin for providing material and field assistance. We also thank M.A. Coffroth and her laboratory (BURR; <http://www.nsm.buffalo.edu/Bio/burr/>) for providing the Symbiodiniaceae strains. This work was funded and supported by Polynesian associations Proscience and TeMana o teMoana and the French association Planète Urgence. Additional funding was provided by the Délégation à la Recherche of French Polynesia, the Ministère de l'Outre-Mer and the Contrat de Projet Etat-Polynésie Française (041-12).

Author Contributions

H.R., V.B.L. and G.L. designed the project. H.R. performed the fieldwork and the molecular analyses. H.R., V.B.L. and G.L. analyzed the results. H.R. wrote the first draft of the paper. H.R., V.B.L., G.L., X.P. and G.T. discussed the results and reviewed the paper.

Additional Information

Supplementary information accompanies this paper at <https://doi.org/10.1038/s41598-019-44017-5>.

Competing Interests: The authors declare no competing interests.

Publisher's note: Springer Nature remains neutral with regard to jurisdictional claims in published maps and institutional affiliations.



Open Access This article is licensed under a Creative Commons Attribution 4.0 International License, which permits use, sharing, adaptation, distribution and reproduction in any medium or format, as long as you give appropriate credit to the original author(s) and the source, provide a link to the Creative Commons license, and indicate if changes were made. The images or other third party material in this article are included in the article's Creative Commons license, unless indicated otherwise in a credit line to the material. If material is not included in the article's Creative Commons license and your intended use is not permitted by statutory regulation or exceeds the permitted use, you will need to obtain permission directly from the copyright holder. To view a copy of this license, visit <http://creativecommons.org/licenses/by/4.0/>.

© The Author(s) 2019