



**HAL**  
open science

## **In-situ estimation of non-regulated pollutant emission factors in an urban area of Nantes, France, with fleet composition characterization**

Simon Martinet, Yao Liu, Liliane Jean-Soro, Mathieu Goriaux, Michel Andre

► **To cite this version:**

Simon Martinet, Yao Liu, Liliane Jean-Soro, Mathieu Goriaux, Michel Andre. In-situ estimation of non-regulated pollutant emission factors in an urban area of Nantes, France, with fleet composition characterization. *Transportation Research Part D: Transport and Environment*, 2019, 76, pp.193-210. 10.1016/j.trd.2019.09.023 . hal-02350412

**HAL Id: hal-02350412**

**<https://hal.science/hal-02350412>**

Submitted on 6 Nov 2019

**HAL** is a multi-disciplinary open access archive for the deposit and dissemination of scientific research documents, whether they are published or not. The documents may come from teaching and research institutions in France or abroad, or from public or private research centers.

L'archive ouverte pluridisciplinaire **HAL**, est destinée au dépôt et à la diffusion de documents scientifiques de niveau recherche, publiés ou non, émanant des établissements d'enseignement et de recherche français ou étrangers, des laboratoires publics ou privés.

# In-situ Estimation of Non-Regulated Pollutant Emission Factors in an Urban Area of Nantes, France, with Fleet Composition Characterization

Simon Martinet<sup>a</sup>, Yao Liu<sup>a,\*</sup>, Liliane Jean-Soro<sup>b</sup>, Mathieu Goriaux<sup>b</sup>, Michel André<sup>a</sup>

<sup>a</sup> Univ Lyon, IFSTTAR, AME, LTE, Bron, 69675, France

<sup>b</sup> GERS, LEE, IFSTTAR, Bouguenais, 44344, France

\* Corresponding author: [yao.liu@ifsttar.fr](mailto:yao.liu@ifsttar.fr), Phone: +33 472 14 24 75, Fax: +33 472 37 68 37; Address: 25 avenue François Mitterrand, 69675 Bron, France

## Abstract

The purpose of this study is to estimate the in-situ emission factors of several pollutants (particle number [PN], black carbon [BC] and several volatile and semi-volatile organic compounds [VOCs and SVOCs]) in an urban area of Nantes, France, with real-world traffic conditions and characterization of the fleet composition. The fleet composition and driving conditions are characterized by the number of vehicles, their speeds and their types (passenger cars [PCs], light commercial vehicles [LCVs], heavy-duty vehicles [HDVs]) as well as their characteristics (make, model, fuel, engine, EURO emission standard, etc.). The number of vehicles passing on the boulevard is around 20,000 per day with about 44% of Euro 5 and Euro 6 vehicles. The impacts of fleet composition on emission were analyzed by ANOVA. The results show that the fleet composition has a significant impact on emissions for different pollutants. Higher percentage of gasoline PCs between Euro 4 to Euro 6 and Euro 4 diesel PCs induces more BC emission. Higher percentage of old gasoline and diesel vehicles ( $\leq$  Euro 3) induces higher emission of toluene, ethylbenzene and m+p- and o-xylene. Furthermore, emission factors estimated in this work were compared to those calculated in other in-situ studies that show a good agreement. For the chassis bench comparison, the in-situ PN and BC emission factors are in the same range as those measured for diesel vehicles

60  
61  
62  
63  
64  
65  
66  
67  
68  
69  
70  
71  
72  
73  
74  
75  
76  
77  
78  
79  
80  
81  
82  
83  
84  
85  
86  
87  
88  
89  
90  
91  
92  
93  
94  
95  
96  
97  
98  
99  
100  
101  
102  
103  
104  
105  
106  
107  
108  
109  
110  
111  
112  
113  
114  
115  
116  
117  
118

25 without particle filter and gasoline vehicles with direct injection system. These EFs are also  
26 comparable with old heavy duty vehicles without particle filter ( $5 \times 10^{13}$ - $2 \times 10^{14}$  #/km).

27 **Keywords**

28 In-situ emission factors; Unregulated pollutants; Fleet composition

29

30

119  
120  
121 **31 1. Introduction**  
122  
123

124 32 On-road vehicle emissions are the main cause of atmospheric pollution in urban areas.  
125

126  
127 33 Road transport induces particles, black carbon (BC) and of several VOCs and SVOCs (Volatile  
128  
129 34 and Semi-Volatile Organic Compounds) emissions, such as carbonyl compounds  
130  
131 35 (formaldehyde, hexanal), and BTEX (benzene, toluene, ethylbenzene, xylene) as well as  
132  
133 36 various alkanes and alkenes. These VOCs and SVOCs are non-regulated compounds that  
134  
135 37 could serve as secondary particle precursors and have serious negative impacts on human  
136  
137 38 health (Sydbom et al., 2001; Lewtas et al., 2007) and air quality in cities.  
138  
139

140 39 The European Union is imposing emission limits for regulated pollutants in order to  
141  
142 40 reduce road-traffic emissions. Facing on these vehicle emission standards, emission factors  
143  
144 41 are derived from dynamometer bench test (Alves et al., 2015; Yang et al., 2015; Louis et al.,  
145  
146 42 2016; Martinet et al., 2017) or from on-board emissions measurements (O'Driscoll et al.,  
147  
148 43 2016; Ntziachristos et al., 2016). These emission factors constituted an input database with  
149  
150 44 different vehicle categories using by emission models (e.g., COPERT, HBEFA, PHEM and  
151  
152 45 MOVES) for air quality studies. However, for these emission models, the emission factors  
153  
154 46 inventories for recent Euro 5 and Euro 6 vehicles are quite poor (Rexeis et al., 2013). Only  
155  
156 47 eighty Euro 5 vehicles and twenty Euro 6 vehicles (with 13 different vehicle models, and only  
157  
158 48 one Euro 6 gasoline car) were added to HBEFA Version 3.2 for regulated compounds, which  
159  
160 49 may not be representative of the entire fleet composition. The emissions of non-regulated  
161  
162 50 pollutants are rarely measured and integrated in emission models. As consequence, their  
163  
164 51 emission factors for an entire fleet could not be estimated correctly actually due to this  
165  
166 52 deficiency of database, and their impact on air quality and human health could not be  
167  
168 53 investigated accurately.  
169  
170  
171  
172  
173  
174  
175  
176  
177

178  
179  
180 54 Emission factors could be estimated in-situ for a part or an entire fleet using various  
181  
182 55 methods. The first is the chasing method, where pollutant concentrations are measured  
183  
184 56 by driving a mobile measurement platform behind either a single vehicle (Karjalainen et  
185  
186 57 al., 2014; Ježek et al., 2015) or part of the fleet present on the road (Yli-Tuomi et al.,  
187  
188 58 2005; Wang et al., 2009; Westerdahl et al., 2009; Kam et al., 2012; Ning et al., 2012;  
189  
190 59 Huuda et al., 2013). In the second method, traffic pollutant concentrations are collected  
191  
192 60 by a fixed measurement platform placed on the roadside. This method makes it possible  
193  
194 61 to measure emissions for an entire fleet driving near the measurement site (Ketzler et al.,  
195  
196 62 2003; Imhof et al., 2005; Rose et al., 2005; Jones et al., 2006; Bukowiecki et al., 2010).  
197  
198 63 For most of these studies, the number of LDVs, HDVs and buses are counted and the  
199  
200 64 traffic speeds are measured in some cases. However, the fleet compositions with vehicle  
201  
202 65 engine, capacity, combustion, age and Euro emission standard were not fully  
203  
204 66 characterized. As consequence, the impacts of fleet composition on non-regulated  
205  
206 67 pollutant emissions are hardly investigated. Furthermore, the on-road emission factors in  
207  
208 68 these cited studies were mainly calculated for particles and BC. Very few on-road  
209  
210 69 emission factors studies were focused on secondary particle precursors (carbonyl  
211  
212 70 compounds, BTEX and alkanes...). Ning *et al.* (2012) determined on-road emission factors  
213  
214 71 for butane, but only for an HDV/bus fleet.

220  
221 72 In this paper, the emission factors of particle number (PN), BC, and several aliphatic,  
222  
223 73 aromatic and carbonyl compounds were estimated using the different concentrations of NO<sub>x</sub>  
224  
225 74 and a pollutant between a background measurement site and a traffic measurement site  
226  
227 75 with the fleet composition observed during the measurements campaign. Furthermore, the  
228  
229 76 fleet composition was characterized based on the vehicle type, make, model, fuel, engine,  
230  
231 77 age, Euro emission standard, as well as the traffic conditions, traffic speed, and congestion.

237  
238  
239 78 ANOVA statistical analyses were performed to characterize the impact of fleet composition  
240  
241 79 on emissions. Furthermore, the emission factors estimated in this study were compared to  
242  
243  
244 80 other emission factors calculated in previous in-situ studies and those measured on a  
245  
246 81 dynamometer bench.  
247  
248

## 249 82 **2. Experimental Method**

### 250 251 252 253 83 **2.1 Measurement Sites**

254  
255  
256 84 The measurements were conducted at two sites in the city of Nantes, France, between  
257  
258  
259 85 April 19 and 30, 2017. The first site was an urban background (47°13'20.3"N 1°32'15.2"W)  
260  
261 86 site to measure urban background pollutant concentrations over a period of four days. The  
262  
263 87 second site was a traffic site in the city center (47°12'16.0"N 1°33'10.9"W). It is an urban  
264  
265 88 boulevard with two lanes of traffic in each direction, a speed limit of 30 km/h, and traffic  
266  
267  
268 89 lights (Fig. 1). The number of vehicles passing on the boulevard is around 20,000 per day.  
269  
270 90 Trucks and buses pass on the boulevard but with a low frequency. Measurements were  
271  
272 91 conducted over a period of seven days.  
273  
274

### 275 92 **2.2 Traffic Characterization**

276  
277  
278 93 The fleet composition and traffic conditions on the traffic site were characterized by  
279  
280  
281 94 AlyceSofreco (a private company specialized in the field of traffic measurement). These data  
282  
283 95 were recorded in both directions of traffic and over a period of seven days using two video  
284  
285 96 cameras and pneumatic-tube automatic traffic counters. The counters determined the  
286  
287 97 number of vehicles and the driving conditions (speed, traffic congestion, etc.) and the video  
288  
289 98 cameras collected the license plate numbers of each vehicle. Using these license plate  
290  
291  
292  
293  
294  
295

296  
297  
298  
299  
300  
301  
302  
303  
304  
305  
306  
307  
308  
309  
310  
311  
312  
313  
314  
315  
316  
317  
318  
319  
320  
321  
322  
323  
324  
325  
326  
327  
328  
329  
330  
331  
332  
333  
334  
335  
336  
337  
338  
339  
340  
341  
342  
343  
344  
345  
346  
347  
348  
349  
350  
351  
352  
353  
354

99 numbers, AAAData (a private company) provided the characteristics of each vehicle,  
100 including its make, model, vehicle type, fuel, engine, date of entry into circulation and Euro  
101 emission standard according to the vehicle type (LDV and HDV).

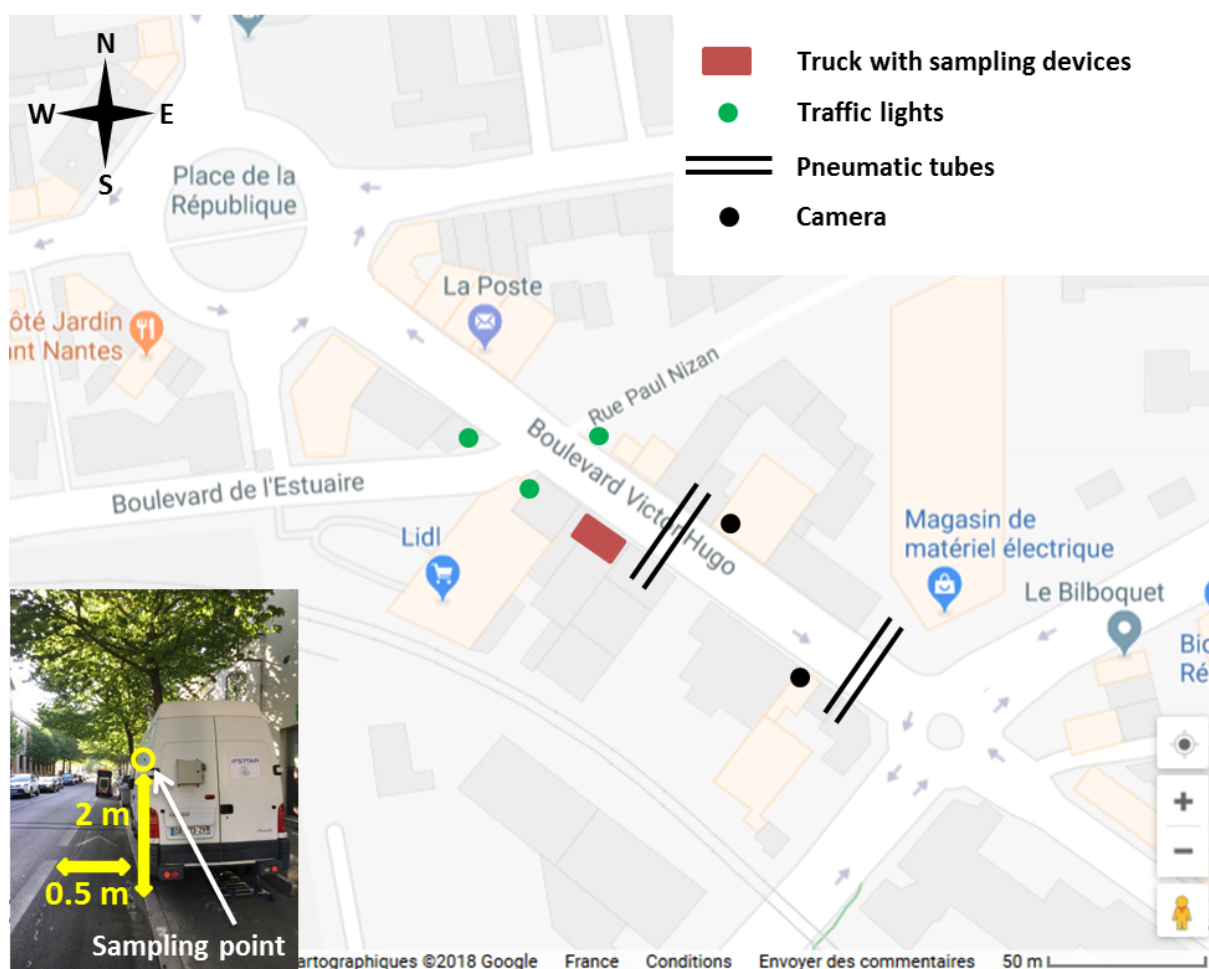
102 2.3 Sampling Devices

103 The sampling devices were installed in a truck that been specially fitted with an array of  
104 analyzers to sample the ambient air. The truck was placed along the edge of the road on the  
105 traffic site and the sampling was carried out around at a height about two meters and at a  
106 distance of 0.5 m of the road (Fig. 1). A Fast Mobility Particle Sizer (FMPS™; TSI) was used to  
107 measure the distribution and total particle number ranging from 5.6 to 560 nm with 1 scan/s  
108 at a flow rate of 8 L/min, with a concentration range from 0 to 10<sup>7</sup> particle/cm<sup>3</sup>. An  
109 Aethalometer® (AE-33-7, Magee Scientific) was used to measure the BC concentration. The  
110 data are collected once a second and at a flow rate of 5 L/min. The concentration ranges  
111 from 10 to 10<sup>5</sup> ng/m<sup>3</sup> with a detection limit of 5 ng/m<sup>3</sup> for 1 hour. The device measures the  
112 light attenuation for seven wavelengths from UV to IR (370, 470, 525, 590, 660, 880 and 940  
113 nm). The 880 nm wavelength corresponding to the maximum amount of BC was used for the  
114 quantification in this study.

115 VOCs and SVOCs were sampled on different cartridges with 1 sample per hour. DNPH  
116 and Tenax® cartridges were used to collect respectively carbonyl compounds and BTEX and  
117 five majority alkanes with a flow rate of 1 L/min and 0.1 L/min. A private laboratory, TERA  
118 Environnement, analyzed the cartridges (78 TENAX and 78 DNPH, including 28 for the  
119 background site, 49 for the traffic site and 1 for the transport blank for each type of  
120 cartridge) using standardized analytical methods (ISO-16000-6, ISO 16000-3, NIOSH 2549,

121 NIOSH 5506 and NF X 43-025). The complete list of compounds (six BTEX, five alkanes and 11  
122 carbonyl compounds) analyzed on the cartridges is given below.

- 123 • BTEX: benzene, toluene, ethylbenzene, m-xylene, p-xylene, o-xylene.
- 124 • Alkanes: nonane, decane, undecane, cyclopropane, ethyl, cyclohexane, ethyl.
- 125 • Carbonyl compounds: formaldehyde, acetaldehyde, acetone, acrolein, propionaldehyde,  
126 crotonaldehyde, methacrolein, butanal, benzaldehyde, pentanal, hexanal.



127  
128 **Fig. 1.** Diagram of the traffic site used for the measurements.

129



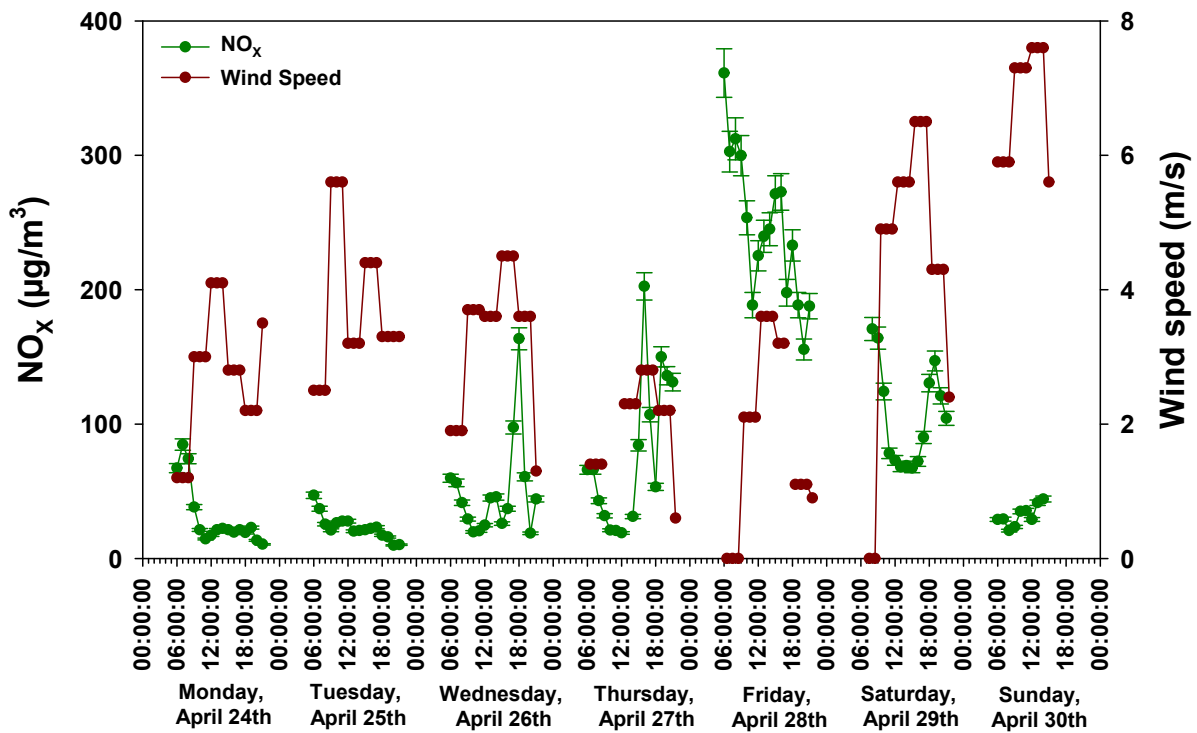
## 2.4 Emission Factors

The variation of NO<sub>x</sub> and pollutant concentrations between the background site and the traffic site were used for estimating road-traffic emission factors (Imhof et al., 2005; Jones et al. 2006; Johansson et al., 2009; Krecl et al., 2017). This method is based on the assumption that the dilution of the pollutant between the exhaust outlets of vehicles and the sampler device inlets and the behavior in the atmosphere are comparable for NO<sub>x</sub> and the other pollutants (Lohmeyer et al., 2002; Amato et al., 2010; Bukowiecki et al., 2010; Gietl et al., 2010). Using this assumption, it is considered that the dilution of other pollutants may be approximated by the dilution of NO<sub>x</sub>. The wind speed (Fig. 2) and directions during the campaign varied between 0 and 7.6 m/s, with principally the north direction and few times the south and west direction. The temperature varied between 0 and 19 °C with relative humidity at about 30-99%. The following equation is used to calculate the emission factor for a given pollutant:

$$EF_P = \Delta P \times \frac{EF_{NO_x}}{\Delta NO_x} \quad (1)$$

where  $EF_P$  and  $EF_{NO_x}$  are the emission factor for pollutant P and NO<sub>x</sub>, respectively, given in mass or number of particles per vehicle per kilometer (#/veh/km or µg/veh/km).  $\Delta P$  and  $\Delta NO_x$  are the difference of concentrations between background and traffic sites for pollutant P and NO<sub>x</sub> respectively. The emission factors for NO<sub>x</sub> used in the equation (1) were obtained using COPERT 4 (COmputer Programme to calculate Emissions from Road Transport) for each time step (one-hour period) with the corresponding fleet composition characterized at the same time step. For urban driving conditions, COPERT 4 estimates a NO<sub>x</sub> emission that takes into account cold and hot emissions.

152 For all cartridges, the sampling time is one hour to have enough material for chemical  
 153 analysis. For PN and BC, the data resolution is 1 second. However, in order to be able to  
 154 analyze the emission factors with the fleet for all measured pollutants, the PN and BC  
 155 measurement were averaged in one-hour period, corresponding to the cartridge sampling  
 156 time. In addition, the NO<sub>x</sub> concentrations used for ΔNO<sub>x</sub> in Equation 1 are given as a 15-  
 157 minute average concentration. It is therefore impossible to go below this 15-minute time  
 158 step for calculating emission factors.



160 Fig. 2. Time profiles of NO<sub>x</sub> concentration and wind speed on the measurement week.

### 161 2.5 ANOVA Analysis

162 The analysis of variance (ANOVA) is a statistical technique for assessing the differences  
 163 between the dependent variables, which are the emissions, of a nominal variable with  
 164 several categories (composition of the fleet). The null hypothesis (H0) for the analysis  
 165 represents the fact that there is no significant difference between the groups. The

532  
533  
534 166 alternative hypothesis considers that there is at least one significant difference among the  
535  
536 167 groups. For the ANOVA test, the F-ratio and associated probability value (p-value) are  
537  
538  
539 168 calculated. If the p-value associated with the F is smaller than 0.05, then the H0 is rejected  
540  
541 169 and the alternative hypothesis (H1) is retained (Fanelli et al., 2018) and this implies that the  
542  
543 170 groups have a significant impact on emissions (Wildt and Ahtola, 1978). It can be concluded  
544  
545 171 that the means of all groups are not equal and we can determine which groups are different  
546  
547  
548 172 from others.

549  
550 173 In this work, ANOVA was performed by SPAD (data analysis and data mining software) to  
551  
552 174 determine impact of fleet composition on emission factors. The nominal-level variables used  
553  
554 175 are the number of HDVs, the percentage of diesel vehicles between pre-Euro and Euro 3, the  
555  
556 176 percentage of Euro 4 diesel, the percentage of diesel between Euro 5 and Euro 6, the  
557  
558 177 percentage of gasoline vehicles between pre-Euro and Euro 3 and the percentage of gasoline  
559  
560 178 between Euro 4 and Euro 6.

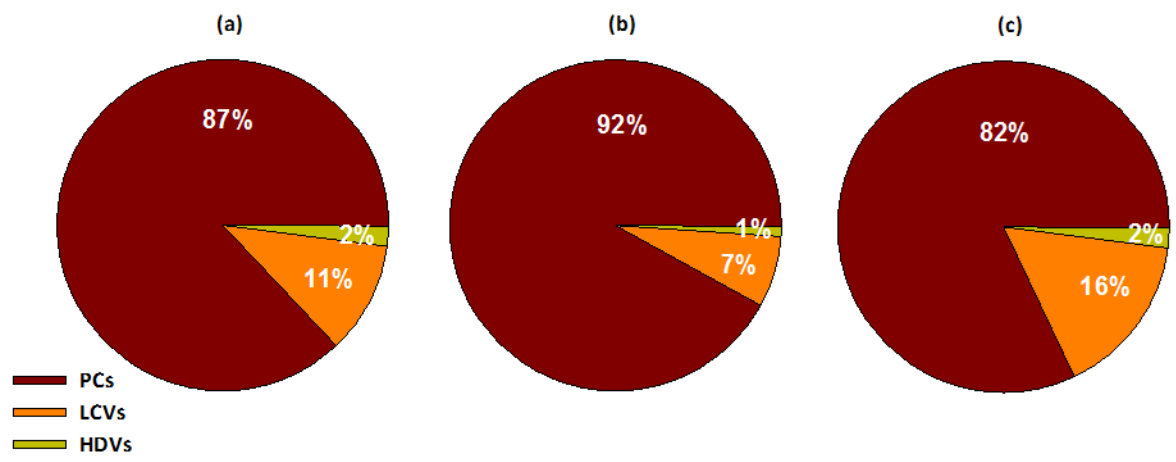
### 565 179 **3. Results and Discussion**

#### 568 180 **3.1 Fleet Composition**

569  
570  
571 181 The number of vehicles was characterized during the measurement on the traffic site. A  
572  
573 182 total of 140,076 vehicles drove along the boulevard during the seven-day measurement  
574  
575 183 period. Many vehicles were registered twice or more times during the week. The number of  
576  
577 184 unique vehicles after removing these duplicates is 57,220. The number of vehicles varied  
578  
579 185 between 21,147 and 23,401 from Monday to Friday. On Saturday and Sunday, 18,763  
580  
581 186 vehicles and 9,860 vehicles were counted, respectively. The number of vehicles per hour was  
582  
583 187 between 600 and 1800 with an average number of 1400/h for all five weekdays and  
584  
585  
586  
587  
588  
589  
590

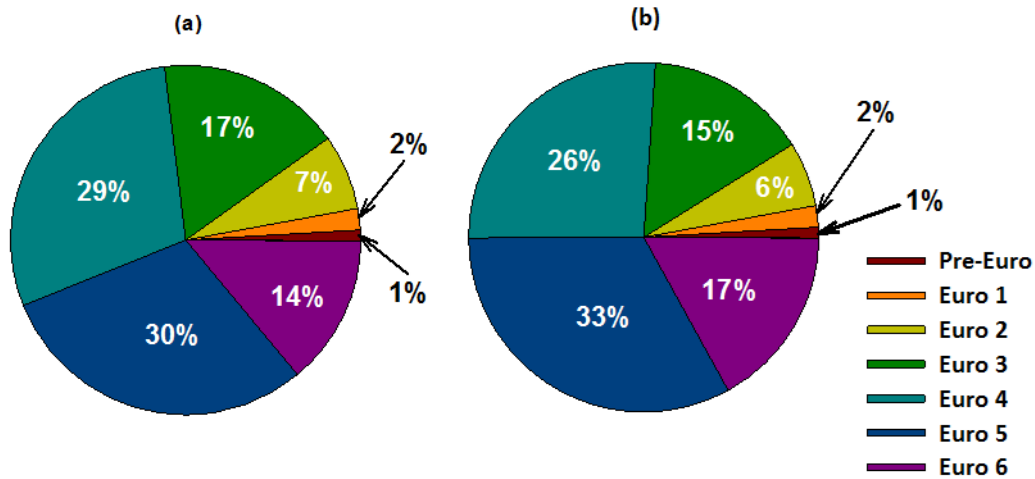
591  
592  
593  
594  
595  
596  
597  
598  
599  
600  
601  
602  
603  
604  
605  
606  
607  
608  
609  
610  
611  
612  
613  
614  
615  
616  
617  
618  
619  
620  
621  
622  
623  
624  
625  
626  
627  
628  
629  
630  
631  
632  
633  
634  
635  
636  
637  
638  
639  
640  
641  
642  
643  
644  
645  
646  
647  
648  
649

188 between 200 and 1600 on the weekend with an average number of 900/h. The traffic speed  
189 was characterized for each 5 minutes. The average traffic speed for one hour was between  
190 16 and 34 km/h on all five weekdays and 21 and 38 km/h on the weekend (



191  
192 **Fig. 3.** Weekdays (a) and weekend (b) characterization of the fleet composition during the measurement campaign. 2017  
193 composition of the French fleet (c).

194 Furthermore, the fleet composition characterized during the measurement campaign  
195 was composed of 87% passenger cars (PCs), 11% light commercial vehicles (LCVs), and 2%  
196 heavy-duty vehicles (HDVs) on weekdays. On the weekend, it consisted of 92% PCs, 7% LCVs,  
197 and 1% HDVs. The number of LCVs and HDVs decreased over the weekend, particularly on  
198 Sundays. According to André *et al.* (2014), the entire French fleet was composed of 82% PCs,  
199 16% LCVs, and 2% HDVs in 2017 (Fig. 3). The comparison between this study and the French  
200 fleet composition shows the slightly higher percentage of PCs and the slightly lower  
201 percentage of LCVs. These differences are explained by the fact that the measurements  
202 were conducted in an urban environment, where LCV and HDV traffic is generally lower.



**Fig. 4.** Distribution of the various Euro emission standards for PCs (a) during the measurement campaign and (b) for the 2017 French fleet.

The distribution of the various Euro emission standards for PCs during the measurements was 14% Euro 6, 30% Euro 5, 29% Euro 4, 17% Euro 3, 7% Euro 2, 2% Euro 1, and 1% pre-Euro vehicles (Fig. 4a). This distribution is consistent with André et al. (2014), who estimated the PCs French fleet composed 17% Euro 6, 33% Euro 5, 26% Euro 4, 15% Euro 3, 6% Euro 2, 2% Euro 1, and 1% pre-Euro in 2017 (Fig. 4b). As regards drive technology systems, the observed PC fleet was composed of 68% diesel vehicles, 30% gasoline vehicles, and 2% other such as gasoline or diesel hybrid vehicles, electric vehicles, gasoline/compressed natural gas and gasoline/liquefied petroleum gas vehicles. The LCV fleet was composed of 97% diesel vehicles. For the HDVs, all the trucks were powered by diesel engines and all the buses were natural gas combustion or other gaseous hydrocarbons.

### 3.2 Estimation of Global Fleet Emission Factors

The global fleet emission factors for PN, BC, carbonyl compounds, BTEX, alkanes, NO<sub>x</sub> concentrations, number of vehicles, and traffic speeds are presented in Fig. 5 as a function of the measurement time and day on the traffic site. The average emission factor of one

709  
710  
711 220 vehicle (equation (1)) has been multiplying by the vehicle number that gives us the pollutant  
712  
713 221 emission factors for a global fleet, over the one-hour measurement period. This allows us to  
714  
715  
716 222 study the pollutant emissions in relation with the current traffic.  
717

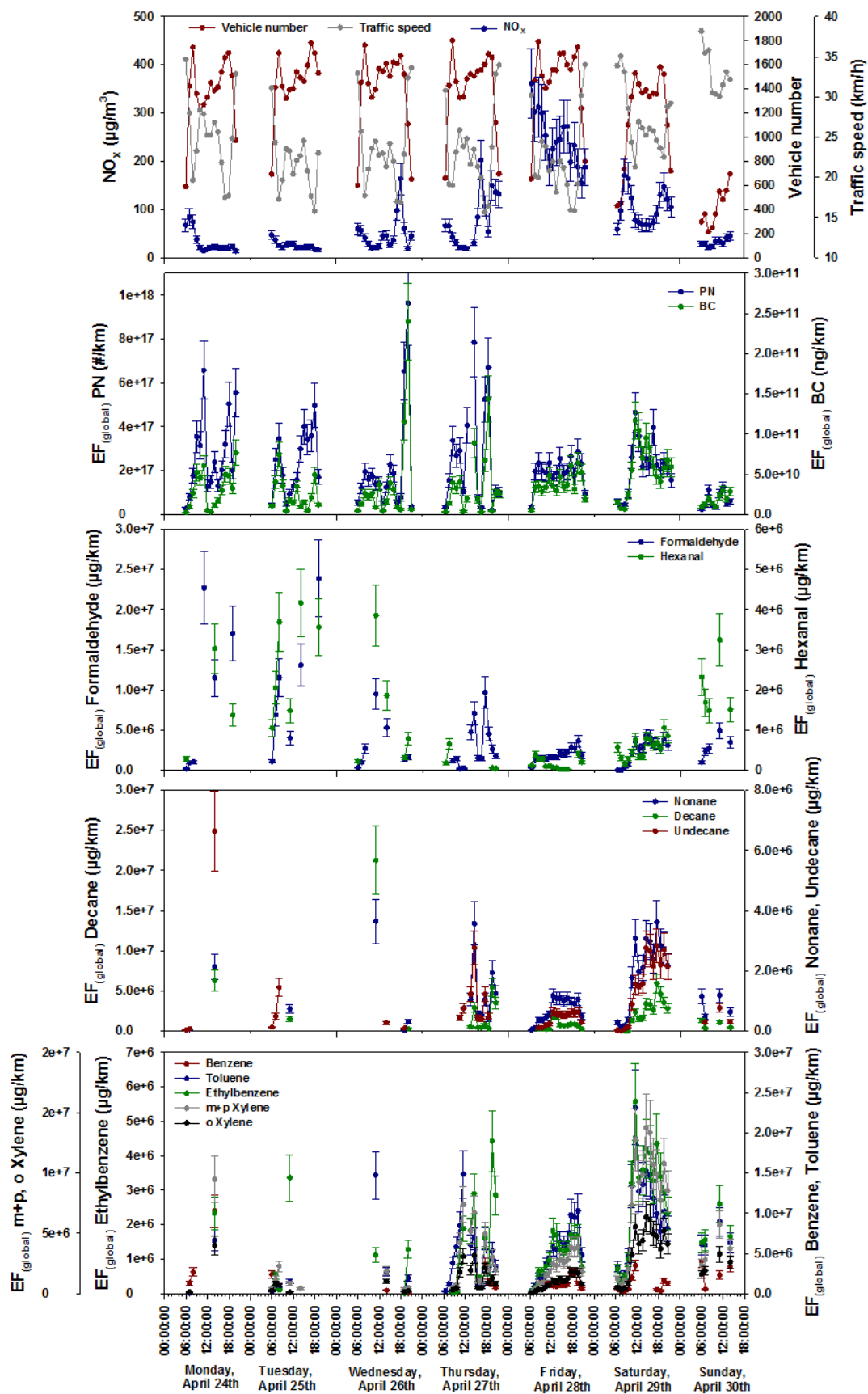
718 223 The particle number emission factors varied between  $2 \times 10^{16}$  and  $9.6 \times 10^{17}$  #/km on five  
719  
720 224 weekdays and between  $2.3 \times 10^{16}$  and  $4.6 \times 10^{17}$  #/km on the weekend. The BC emission  
721  
722 225 factors varied between  $2.4 \times 10^9$  and  $2.4 \times 10^{11}$  ng/km on weekdays and between  $6.6 \times 10^9$  and  
723  
724 226  $1.2 \times 10^{11}$  ng/km on the weekend. The emission factors for carbonyl compounds varied  
725  
726 227 between  $2 \times 10^4$  and  $2.4 \times 10^6$   $\mu\text{g}/\text{km}$  on weekdays and between  $2.7 \times 10^3$  and  $4.9 \times 10^5$   $\mu\text{g}/\text{km}$   
727  
728 228 on the weekend. The hexanal emission factors ranged between  $2.3 \times 10^3$  and  $4.1 \times 10^5$   $\mu\text{g}/\text{km}$   
729  
730 229 on weekdays and between  $1.5 \times 10^4$  and  $3.2 \times 10^5$   $\mu\text{g}/\text{km}$  on the weekend. For the three  
731  
732 230 alkanes, the emission factors were between  $1.2 \times 10^4$  and  $7.1 \times 10^6$   $\mu\text{g}/\text{km}$  on weekdays and  
733  
734 231 between  $5.3 \times 10^3$  and  $2 \times 10^6$   $\mu\text{g}/\text{km}$  on the weekend. The BTEX emission factors ranged  
735  
736 232 between  $5.4 \times 10^3$  and  $3.3 \times 10^6$   $\mu\text{g}/\text{km}$  on weekdays and between  $6.3 \times 10^4$  and  $5.1 \times 10^6$   $\mu\text{g}/\text{km}$   
737  
738 233 on the weekend. The missing points for VOCs are either pollutant quantities sampled on the  
739  
740 234 cartridges below their quantification limit; or negative values by subtracting the background  
741  
742 235 value.  
743  
744  
745  
746

747 236 The urban background concentrations for the pollutants used in the equation (1) were  
748  
749 237 measured on the urban background site used by the air quality association "Air Pays de la  
750  
751 238 Loire". This background site is not affected by road traffic emissions, the measured  $\text{NO}_x$ , PN  
752  
753 239 and BC concentrations vary little on the different measurement time (16h/day during 4 days)  
754  
755 240 (between 3200 and 4800 #/cm<sup>3</sup> for PN, between 400 and 700 ng/m<sup>3</sup> for BC, and between 5  
756  
757 241 and 50  $\mu\text{g}/\text{m}^3$  for  $\text{NO}_x$ ) and provides a general background concentration with all different  
758  
759 242 sources. The subtraction in the equation (1) allows removing only the general back ground  
760  
761 243 levels but not the local background levels. This might induce a potential bias with an over  
762  
763  
764  
765  
766  
767

768  
769  
770 244 estimation of EF for PN and other pollutants if the local background levels are higher than  
771  
772 245 general background levels. The local background levels could also be measured when there  
773  
774  
775 246 is no traffic. However, depending on the weather conditions, especially the wind speeds, the  
776  
777 247 accumulation phenomena under no traffic condition might also induce a potential bias on  
778  
779 248 our measurement. The first point in the morning (at around 6:00 a.m.) was taken as the  
780  
781 249 background level at the traffic site. Using this local background levels, the emission factors of  
782  
783 250 PN and BC are respectively between  $5 \times 10^{15}$  and  $9 \times 10^{17}$  #/km and  $1.2 \times 10^8$  and  
784  
785 251  $2.3 \times 10^{11}$  ng/km. The local background values induce an underestimation of 4 and 20 times  
786  
787 252 for PN and BC comparing to the 'Air Pays de la Loire' background site, but only for low  
788  
789 253 emission period. These background values do not induce a significant difference at high  
790  
791 254 emission period for both PN and BC. Overall, if we use the local background value, it induced  
792  
793 255 an average underestimation around 30% for all period of measurement.  
794  
795  
796

797 256 In general, the highest emission factors were measured between 7:00 a.m. and  
798  
799 257 10:00 a.m. and between 5:00 p.m. and 8:00 p.m. on all five weekdays. For the Saturday, the  
800  
801 258 highest emission factors were measured between 10:00 a.m. and 1:00 p.m. and between  
802  
803 259 5:00 p.m. and 8:00 p.m. For the Sunday, between 6:00 a.m. and 3:00 p.m., high emission  
804  
805 260 factors were measured for carbonyl compounds, BTEX and alkanes. The higher emission  
806  
807 261 factors measured in the morning can be explained by vehicle cold start, which emits large  
808  
809 262 amounts of pollutants such as BC, PN, BTEX, and carbonyl compounds (Westerholm et al.,  
810  
811 263 1996; Jourmard et al., 2000; Sluder et al., 2000; Caplain et al., 2006; Louis et al., 2016;  
812  
813 264 Martinet et al., 2017).  
814  
815  
816  
817  
818  
819  
820  
821  
822  
823  
824  
825  
826

827  
828  
829  
830  
831  
832  
833  
834  
835  
836  
837  
838  
839  
840  
841  
842  
843  
844  
845  
846  
847  
848  
849  
850  
851  
852  
853  
854  
855  
856  
857  
858  
859  
860  
861  
862  
863  
864  
865  
866  
867  
868  
869  
870  
871  
872  
873  
874  
875  
876  
877  
878  
879  
880  
881  
882  
883  
884  
885



265  
266  
267  
Fig. 5. Global fleet emission factors for PN, BC, carbonyl compounds, BTEX, alkanes, NO<sub>x</sub> concentrations, number of vehicles, and traffic speeds as a function of the time and day of measurement on the traffic site.

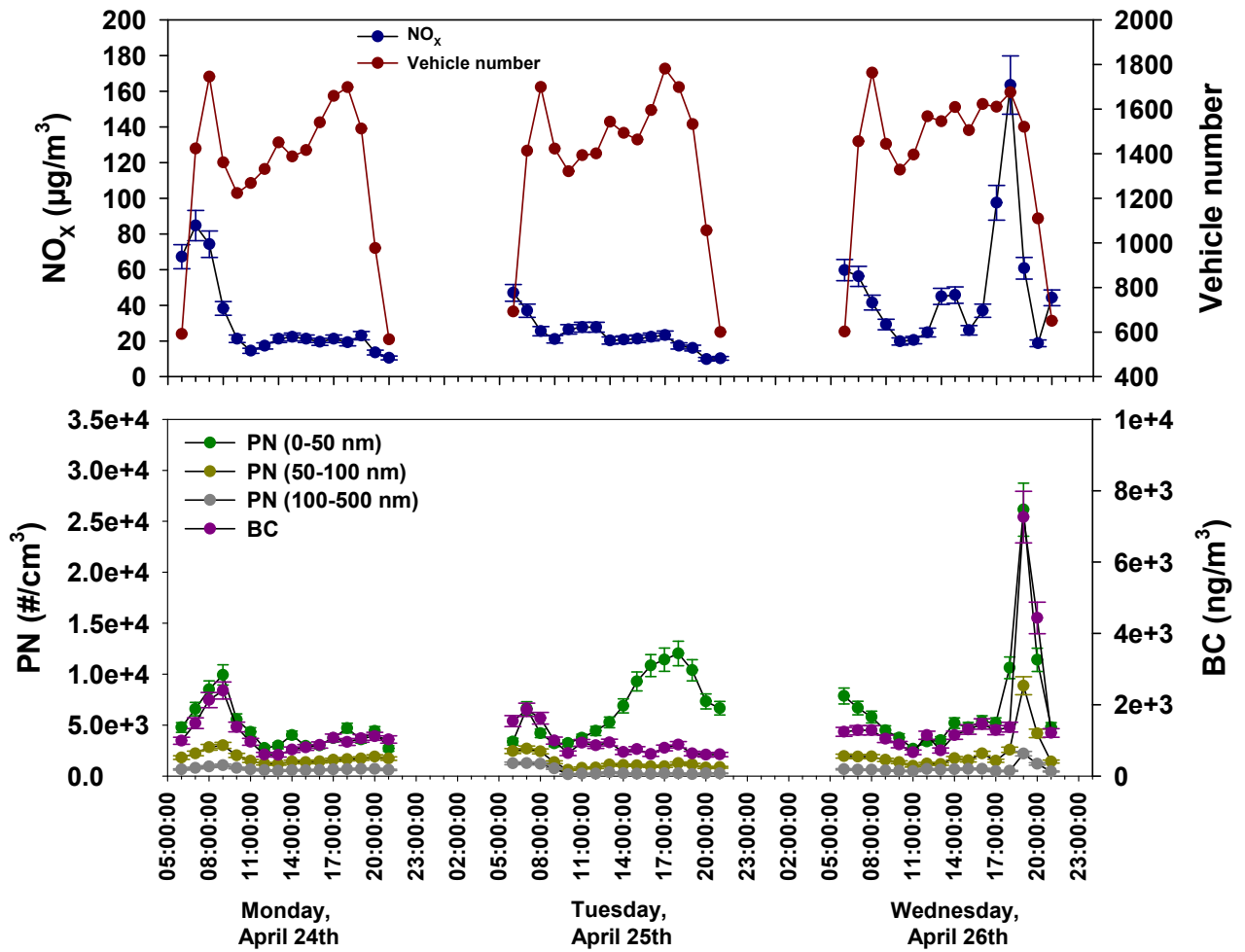


886  
887  
888 268 The PN and BC emission factors showed a good correlation, following the same tendency  
889  
890 269 during the week of measurements (Fig. 5). Apart from Tuesday afternoon between 2:00 p.m.  
891  
892  
893 270 and 8:00 p.m., the PN emission factors did not follow the same tendency as the BC emission  
894  
895 271 factors. The emission factor values for BC decreased while those for PN increased sharply.  
896  
897 272 This could imply that the particle number emissions measured during this afternoon were  
898  
899 273 not due to road traffic (See Section below).  
900  
901  
902

### 903 274 3.3 PN Concentration and Size Distribution Time Profiles 904 905

906 275 The number of vehicles, BC, NO<sub>x</sub> and PN for three size ranges ([0-50] nm, [50-100] nm,  
907  
908 276 and [100-500] nm) concentrations were followed from Monday (April 24<sup>th</sup>) to Sunday (April  
909  
910 277 30<sup>th</sup>), which show the similar results in general for the five weekdays, except for Tuesday  
911  
912 278 afternoon. Fig. 6 shows the time profiles of NO<sub>x</sub>, BC, PN concentrations and vehicles number  
913  
914 279 on Monday, Tuesday and Wednesday. Concentration peaks of BC, PN and NO<sub>x</sub> was observed  
915  
916 280 over a short period between 7:00 a.m. and 9:00 a.m. on weekdays corresponding to morning  
917  
918 281 rush-hour traffic (See Section 3.2).  
919  
920  
921

922 282 Moreover, Fig. 6 shows a large peak for PN with size range [0-50] nm between 2:00 p.m.  
923  
924 283 and 8:00 p.m. on Tuesday that is not correlated with BC, NO<sub>x</sub> and PN size ranges [50-100] nm  
925  
926 284 and [100-500] nm. Since NO<sub>x</sub> and BC are considered as traffic tracers (Pant et al., 2013),  
927  
928 285 which might indicates that the [0-50] nm PN on Tuesday afternoon is not generated by the  
929  
930  
931 286 road traffic.  
932  
933  
934  
935  
936  
937  
938  
939  
940  
941  
942  
943  
944



287  
288 Fig. 6. Time profiles of NO<sub>x</sub> concentration and number of vehicles and PN and BC concentrations on Monday, Tuesday and  
289 Wednesday.

### 290 3.4 ANOVA Analysis of Global Fleet Emission Factors

291 The pollutant emission factors for a global fleet, over the one-hour measurement period,  
292 have been analyzed by ANOVA statistical analysis to investigate impact of fleet composition  
293 on measured pollutant emissions (Table 1). The emission factors were analyzed with 6  
294 categories: number of HDVs (0 to 43 with groups of every 10 HDVs), percentage of diesel PCs  
295 between pre-Euro to Euro 3 (5 to 25% with 5% interval), percentage of Euro 4 diesel PCs (10  
296 to 30% with 5% interval), percentage of diesel PCs Euro 5 and Euro 6 (15 to 35% with 5%  
297 interval), percentage of gasoline PCs between pre-Euro and Euro 3 standard (5 to 15% with

1004  
1005  
1006 298 5% interval) and percentage of gasoline PCs between Euro 4 and Euro 6 (5 to 25% with 5%  
1007  
1008 299 interval). The groups of variables for passenger cars have been made according to the  
1009  
1010 300 implementation of new after-treatment or engine technologies. For diesel vehicles, the  
1011  
1012 301 diesel particle filter (DPF), which significantly reduces PN and BC emissions, is considered as  
1013  
1014 302 variables. Thus, the first category includes the percentage of pre-Euro to Euro 3 diesel  
1015  
1016 303 vehicles that are not equipped with DPF; the second category includes the percentage of  
1017  
1018 304 Euro 4 diesel vehicles that are partially equipped with DPF; and the last category includes the  
1019  
1020 305 percentage of Euro 5 and Euro 6 diesel vehicles that are all equipped with DPF. For gasoline  
1021  
1022 306 vehicles, the first category therefore includes the percentage of gasoline vehicles from pre-  
1023  
1024 307 Euro to Euro 3 standards, all of which have indirect injection engines; and the second  
1025  
1026 308 category includes the percentage of gasoline vehicles from Euro 4 to Euro 6 standards, as the  
1027  
1028 309 introduction of direct injection engines has begun on Euro 4 standard vehicles. Moreover,  
1029  
1030 310 for ANOVA analysis, the fleet composition has been classed by groups (different gaps of  
1031  
1032 311 vehicle number or percentage) to investigate their impact on emissions. Each group has to  
1033  
1034 312 contain enough samples to be significant and not too large to have a good sensibility.  
1035  
1036 313 Tuesday afternoon PN data have not been taken into account because of its strange  
1037  
1038 314 behavior show in section 3.3.

1044 315 For a result of the ANOVA analysis to be significant, the p-value must be  $\leq 0.05$ , which is  
1045  
1046 316 called a "significant result" in Table 1. However, to increase the power of the ANOVA  
1047  
1048 317 analysis, it is possible to consider that a result with a p-value between 0.05 and 0.1 are  
1049  
1050 318 significant, which is called "result considered as significant" in Table 1, but with a great  
1051  
1052 319 uncertainty. This analysis should be read with a special attention because they might also  
1053  
1054 320 indicate that the impacts of the analyzed group on emission could be significant but not  
1055  
1056 321 clearly significant.

1063  
1064  
1065  
1066  
1067  
1068  
1069  
1070  
1071  
1072  
1073  
1074  
1075  
1076  
1077  
1078  
1079  
1080  
1081  
1082  
1083  
1084  
1085  
1086  
1087  
1088  
1089  
1090  
1091  
1092  
1093  
1094  
1095  
1096  
1097  
1098  
1099  
1100  
1101  
1102  
1103  
1104  
1105  
1106  
1107  
1108  
1109  
1110  
1111  
1112  
1113  
1114  
1115  
1116  
1117  
1118  
1119  
1120  
1121

322 **Table 1**

323 Results of the ANOVA analysis for the effect of the fleet composition on the emission factors

Fleet composition	Pollutants	Unit	p-value	Groups having a significant impact	
				Negative impact	Positive impact
	PN	#/km	0.6	--	--
	BC	ng/km	0.2	--	--
	Formaldehyde	µg/km	0.2	--	--
	Hexanal	µg/km	0.6	--	--
	Benzene	µg/km	0.6	--	--
Number of HDVs	Toluene	µg/km	0.004*	20-30; 30-40	10-20
	Ethylbenzene	µg/km	0.04*	30-40	0-10; 10-20
	m+p-Xylene	µg/km	0.2	--	--
	o-Xylene	µg/km	0.1	--	--
	Nonane	µg/km	0.5	--	--
	Decane	µg/km	0.4	--	--
	Undecane	µg/km	0.7	--	--
	PN	#/km	0.08**	15-20%	10-15%
	BC	ng/km	0.6	--	--
Percentage of diesel PCs between pre-Euro to Euro 3 standard	Formaldehyde	µg/km	0.3	--	--
	Hexanal	µg/km	0.2	--	--
	Benzene	µg/km	0.6	--	--
	Toluene	µg/km	0.02*	10-15%	15-20%
	Ethylbenzene	µg/km	0.07**	10-15%	15-20%
	m+p-Xylene	µg/km	0.02*	10-15%	15-20%
	o-Xylene	µg/km	0.02*	10-15%	15-20%

1122  
1123  
1124  
1125  
1126  
1127  
1128  
1129  
1130  
1131  
1132  
1133  
1134  
1135  
1136  
1137  
1138  
1139  
1140  
1141  
1142  
1143  
1144  
1145  
1146  
1147  
1148  
1149  
1150  
1151  
1152  
1153  
1154  
1155  
1156  
1157  
1158  
1159  
1160  
1161  
1162  
1163  
1164  
1165  
1166  
1167  
1168  
1169  
1170  
1171  
1172  
1173  
1174  
1175  
1176  
1177  
1178  
1179  
1180

	Nonane	µg/km	0.1	--	--
	Decane	µg/km	0.9	--	--
	Undecane	µg/km	0.7	--	--
	PN	#/km	0.1	--	--
	BC	ng/km	0.001*	10-15%; 15-20%	20-25%; 25-30%
	Formaldehyde	µg/km	0*	20-25%; 25-30%	10-15%; 15-20%
	Hexanal	µg/km	0.7	--	--
Percentage	Benzene	µg/km	0.3	--	--
of diesel PCs	Toluene	µg/km	0.1	--	--
Euro 4	Ethylbenzene	µg/km	0.02*	15-20%	20-25%
standard	m+p-Xylene	µg/km	0.04*	15-20%	20-25%
	o-Xylene	µg/km	0.02*	15-20%	20-25%
	Nonane	µg/km	0.3	--	--
	Decane	µg/km	0.9	--	--
	Undecane	µg/km	0.6	--	--
	PN	#/km	0.006*	30-35%	20-25%
	BC	ng/km	0.2	--	--
Percentage	Formaldehyde	µg/km	0.06**	15-20%	30-35%
of diesel PCs	Hexanal	µg/km	0.3	--	--
between	Benzene	µg/km	0.07**	15-20%	30-35%
Euro 5 to	Toluene	µg/km	0.2	--	--
Euro 6	Ethylbenzene	µg/km	0.2	--	--
standard	m+p-Xylene	µg/km	0.1	--	--
	o-Xylene	µg/km	0.06**	15-20%	30-35%
	Nonane	µg/km	0.2	--	--

1181  
1182  
1183  
1184  
1185  
1186  
1187  
1188  
1189  
1190  
1191  
1192  
1193  
1194  
1195  
1196  
1197  
1198  
1199  
1200  
1201  
1202  
1203  
1204  
1205  
1206  
1207  
1208  
1209  
1210  
1211  
1212  
1213  
1214  
1215  
1216  
1217  
1218  
1219  
1220  
1221  
1222  
1223  
1224  
1225  
1226  
1227  
1228  
1229  
1230  
1231  
1232  
1233  
1234  
1235  
1236  
1237  
1238  
1239

	Decane	µg/km	0.6	--	--
	Undecane	µg/km	0.007*	15-20%	30-35%
	PN	#/km	0.5	--	--
	BC	ng/km	0.7	--	--
Percentage	Formaldehyde	µg/km	0.9	--	--
of gasoline	Hexanal	µg/km	0.07	--	--
PCs	Benzene	µg/km	0.4	--	--
between	Toluene	µg/km	0.07**	5-10%	10-15%
pre-Euro to	Ethylbenzene	µg/km	0.004*	5-10%	10-15%
Euro 3	m+p-Xylene	µg/km	0.007*	5-10%	10-15%
standard	o-Xylene	µg/km	0.02*	5-10%	10-15%
	Nonane	µg/km	0.2	--	--
	Decane	µg/km	0.9	--	--
	Undecane	µg/km	0.7	--	--
	PN	#/km	0.004*	5-10%	20-25%
	BC	ng/km	0*	5-10%; 10-15%	20-25%
Percentage	Formaldehyde	µg/km	0.5	--	--
of gasoline	Hexanal	µg/km	0.6	--	--
PCs	Benzene	µg/km	0.4	--	--
between	Toluene	µg/km	0.3	--	--
Euro 4 to	Ethylbenzene	µg/km	0.1	--	--
Euro 6	m+p-Xylene	µg/km	0.1	--	--
standard	o-Xylene	µg/km	0.1	--	--
	Nonane	µg/km	0.3	--	--
	Decane	µg/km	0.5	--	--

1240  
1241  
1242  
1243  
1244  
1245  
1246  
1247  
1248  
1249  
1250  
1251  
1252  
1253  
1254  
1255  
1256  
1257  
1258  
1259  
1260  
1261  
1262  
1263  
1264  
1265  
1266  
1267  
1268  
1269  
1270  
1271  
1272  
1273  
1274  
1275  
1276  
1277  
1278  
1279  
1280  
1281  
1282  
1283  
1284  
1285  
1286  
1287  
1288  
1289  
1290  
1291  
1292  
1293  
1294  
1295  
1296  
1297  
1298

---

	Undecane	µg/km	0.07**	5-10%; 10-15%	20-25%
--	----------	-------	--------	---------------	--------

---

- 324 \* Significant results
- 325 \*\* Results considered as significant
- 326 -- No results

327 For BC, the groups of “20-25%” and “25-30%” Euro 4 diesel PCs and “20-25%” gasoline  
328 PCs between Euro 4 to Euro 6 have a significant positive impact on the emissions. This  
329 observation indicates that higher percentage of these two categories present in the fleet  
330 induces more BC emission. For the gasoline PCs between Euro 4 to Euro 6, the group “20-  
331 25%” has also a significant positive impact on the PN emissions. The positive impact of  
332 gasoline PCs between Euro 4 and Euro 6 on the PN and BC emissions can be explained by the  
333 introduction of direct injection technology on certain gasoline vehicles, which induces more  
334 PN and BC emissions than multipoint injection gasoline vehicles. These emissions could  
335 reach the level of some diesel vehicles without a particulate filter (Liang et al., 2013,  
336 Martinet et al., 2017).

337 The percentage of diesel and gasoline PCs between pre-Euro and Euro 3 has a significant  
338 positive impact on toluene, ethylbenzene and m+p- and o-xylene emission factors, more  
339 particular the groups “15-20%” and “10-15%” respectively. Comparing to the average  
340 emission factors ( $1.4 \times 10^6$  µg/km for toluene,  $3.4 \times 10^5$  µg/km for ethylbenzene,  $9 \times 10^5$  µg/km  
341 for m+p-xylene and  $4.2 \times 10^5$  µg/km for o-xylene), the group “15-20%” of Pre-Euro to Euro 3  
342 diesel induces 1.5, 1.4, 1.6 and 1.6 times higher emission respectively for toluene,  
343 ethylbenzene, m+p-xylene and o-xylene. The group “10-15%” of Pre-Euro to Euro 3 gasoline  
344 induces 1.2, 1.4, 1.3 and 1.3 times higher emission respectively for toluene, ethylbenzene,  
345 m+p-xylene and o-xylene. Moreover, the group “20-25%” of diesel Euro 4 PCs has also a  
346 positive impact on ethylbenzene and m+p- and o-xylene emission factors, 1.4, 1.4 and 1.5

1299  
1300  
1301 347 times higher respectively comparing to the average emission factors. For the analyses on the  
1302  
1303 348 number of HDVs, emission factors estimated in the weekend have not been taken into  
1304  
1305  
1306 349 account because of the HDV driving ban. The Table 1 showed that the impact of the number  
1307  
1308 350 of HDVs on pollutant emission does not show a significant positive impact. This observation  
1309  
1310 351 might be explained on one side by the small percentage of HDVs in the fleet (0 to 43 HDVs  
1311  
1312  
1313 352 per hour); and on the other side by the low HDVs emission since 80% of these HDVs are  
1314  
1315 353 recent vehicles ( $\geq$  Euro 4).  
1316  
1317

### 1318 354 3.5 Emission Factors Per Vehicle and Comparison with Other Studies 1319 1320

1321 355 In this section, the average emission factors calculated by equation (1) were used (# or  
1322  
1323 356 mass/veh/km) in order to compare with other studies. Fig. 7 shows the box-and-whisker plot  
1324  
1325  
1326 357 for these average emission factors per vehicle for carbonyl compounds, BTEX, alkanes, PN,  
1327  
1328 358 and BC. In these plots, the boxes contain 50% of the emission factors around the median  
1329  
1330 359 (black line in the box). The upper and lower halves of the boxes represent respectively the  
1331  
1332 360 75<sup>th</sup> and 25<sup>th</sup> percentiles and the whiskers represent the 90<sup>th</sup> and 10<sup>th</sup> percentiles. The  
1333  
1334 361 emission factors that are above or below the whiskers are considered to be atypical values.  
1335  
1336

1337 362 Fig. 7 shows the average emission factors per vehicle for PN and BC, which are between  
1338  
1339 363  $1.2 \times 10^{13}$  and  $8.7 \times 10^{14}$  #/km/veh and between  $1.7 \times 10^6$  and  $2.16 \times 10^8$  ng/km/veh,  
1340  
1341 364 respectively. For both emission factors, the median is in the middle of the box, which  
1342  
1343 365 indicates a symmetric distribution. Half the emission factors are between  $9.1 \times 10^{13}$  and  
1344  
1345 366  $1.87 \times 10^{14}$  #/km/veh for PN and between  $1.1 \times 10^7$  and  $3.8 \times 10^7$  ng/km/veh for BC. In addition,  
1346  
1347 367 the boxes are comparatively short, suggesting that the PN emission factors have a high level  
1348  
1349 368 of agreement between them, and the BC emission factors have also a high level of  
1350  
1351 369 agreement between them. Fig. 7 shows also the average emission factors per vehicle for the  
1352  
1353  
1354  
1355  
1356  
1357

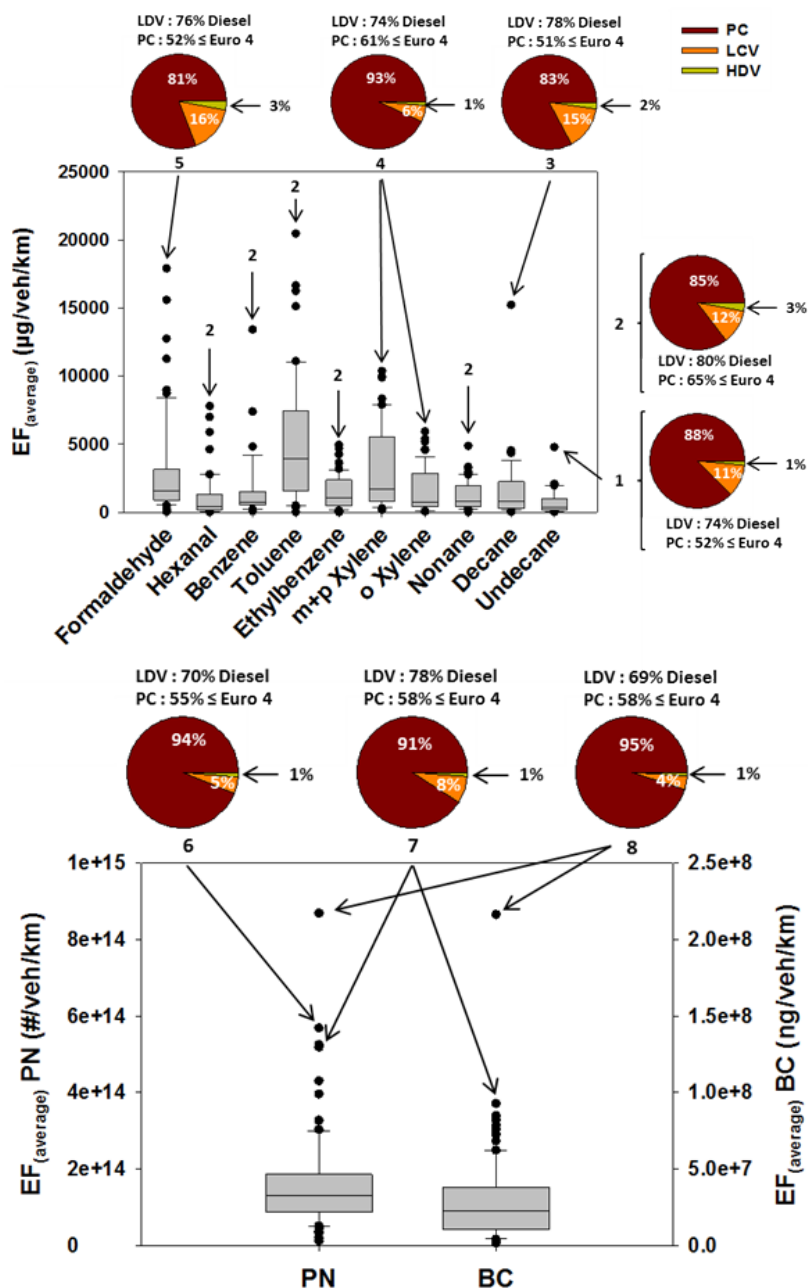


1358  
1359  
1360  
1361  
1362  
1363  
1364  
1365  
1366  
1367  
1368  
1369  
1370  
1371  
1372  
1373  
1374  
1375  
1376  
1377  
1378  
1379  
1380  
1381  
1382  
1383  
1384  
1385  
1386  
1387  
1388  
1389  
1390  
1391  
1392  
1393  
1394  
1395  
1396  
1397  
1398  
1399  
1400  
1401  
1402  
1403  
1404  
1405  
1406  
1407  
1408  
1409  
1410  
1411  
1412  
1413  
1414  
1415  
1416

370 measured VOCs and SVOCs. For all these compounds, the median is in the lower half of the  
371 box, which assumes an asymmetric distribution toward the low values. Their emission  
372 factors varied between 14 and  $2.1 \times 10^4$   $\mu\text{g}/\text{veh}/\text{km}$ .

373 For each compound, the atypical values are presented by black dots. Here, only the  
374 atypical values above the upper whisker limit are further analyzed with the corresponding  
375 fleet composition. The emission factors above the upper whisker for PN and BC are,  
376 respectively, 2.3 to 6.6 times higher and 2.7 to 9.6 times higher compared to the median.  
377 The highest emission factor for both corresponds to the same fleet composition with 69% of  
378 LDVs diesel and 58% of PCs  $\leq$  Euro 4 (composition 8 in the Fig. 7) for the Wednesday  
379 between 8:00 p.m. and 9:00 p.m. The second highest emission factor for BC and the third  
380 highest for PN (composition 7 in the Fig. 7) correspond to the Sunday between 8:00 a.m. and  
381 9:00 a.m.

1417  
 1418  
 1419  
 1420  
 1421  
 1422  
 1423  
 1424  
 1425  
 1426  
 1427  
 1428  
 1429  
 1430  
 1431  
 1432  
 1433  
 1434  
 1435  
 1436  
 1437  
 1438  
 1439  
 1440  
 1441  
 1442  
 1443  
 1444  
 1445  
 1446  
 1447  
 1448  
 1449  
 1450  
 1451  
 1452  
 1453  
 1454  
 1455  
 1456  
 1457  
 1458  
 1459  
 1460  
 1461  
 1462  
 1463  
 1464  
 1465  
 1466  
 1467  
 1468  
 1469  
 1470  
 1471  
 1472  
 1473  
 1474  
 1475



382  
 383 **Fig. 7.** Box-and-whisker plot of the average vehicle emission factors for PN, BC, carbonyl compounds, BTEX and alkanes.  
 384 Fleet composition of 1: Monday 2:00 - 3:00 p.m.; 2: Sunday 6:00 - 7:00 a.m.; 3: Wednesday 11:00 - 12:00 a.m.; 4: Sunday  
 385 11:00 - 12:00 a.m.; 5: Monday 11:00 - 12:00 a.m.; 6: Monday 8:00 - 9:00 p.m.; 7: Sunday 8:00 - 9:00 a.m.; 8: Wednesday  
 386 8:00 - 9:00 p.m.

387 The emission factors for carbonyl compounds above the upper whisker are 5 to 11 times  
 388 higher and 6 to 17 times higher than the median for formaldehyde and hexanal, respectively.  
 389 For the three alkanes, the emission factors above the upper whisker are 3 to 18 times higher

1476  
1477  
1478  
1479  
1480  
1481  
1482  
1483  
1484  
1485  
1486  
1487  
1488  
1489  
1490  
1491  
1492  
1493  
1494  
1495  
1496  
1497  
1498  
1499  
1500  
1501  
1502  
1503  
1504  
1505  
1506  
1507  
1508  
1509  
1510  
1511  
1512  
1513  
1514  
1515  
1516  
1517  
1518  
1519  
1520  
1521  
1522  
1523  
1524  
1525  
1526  
1527  
1528  
1529  
1530  
1531  
1532  
1533  
1534

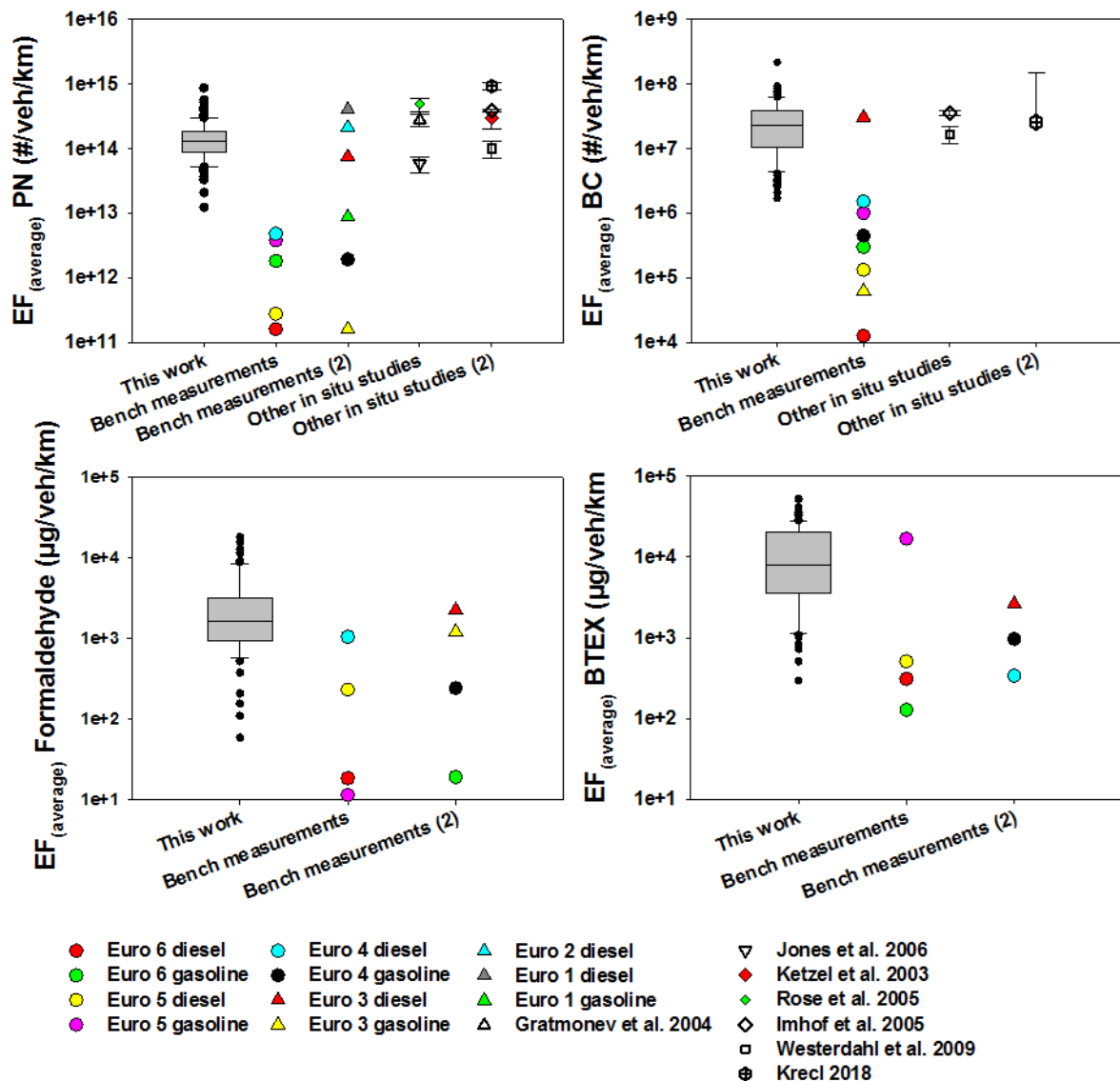
390 compared to their median. The BTEX emission factors above the upper whisker are 1.4 to 8  
391 times higher compared to their median. The highest emission factor for hexanal, benzene,  
392 toluene, ethylbenzene and nonane correspond to the same fleet composition (composition 2  
393 in the Fig. 7) for the Sunday between 6:00 a.m. and 7:00 a.m. We remark that, in this time  
394 interval, the fleet composition composed relatively high percentage of LDVs diesel (80%),  
395 PCs  $\leq$  Euro 4 (65%) and HDVs (3%), which have been showed by the ANOVA analysis to have  
396 significant impacts on emission of these compounds (Table 3). For m+p and o xylene  
397 compounds, the highest emission factor corresponds to the fleet composition of the Sunday  
398 between 11:00 a.m. and 12:00 a.m. (composition 4 in the Fig. 7), with relatively high  
399 percentage of PCs  $\leq$  Euro 4. For formaldehyde, the highest emission factor corresponds to  
400 the Monday between 11:00 a.m. and 12:00 a.m. (composition 5) with 3% of HDVs.

401 Fig. 8 shows the comparison of PN, BC, formaldehyde and BTEX emission factors  
402 estimated in this study and with those estimated during lab bench measurements with  
403 Artemis urban driving cycles that is not exactly the same driving condition but might  
404 represent the most similar driving condition (average speed from 8.7 to 31.8 km/h from  
405 congestion to fluid situations) comparing to our traffic site (hourly average speed between  
406 16 and 34 km/h). The detail of bench measurement of Euro 1 to Euro 6 gasoline and diesel  
407 PCs were presented in our previous works (Rehn 2013; Louis et al., 2016; Martinet et al.,  
408 2017). Moreover, the PN and BC emission factors estimated in this study were also  
409 compared with other in-situ studies with similar site characteristics (Ketzler et al., 2003;  
410 Gratmonev et al., 2004; Rose et al., 2005; Imhof et al., 2005; Jones et al. 2006; Westerdahl et  
411 al., 2009; Krecl et al., 2018).

412 The emission factors estimated by other in-situ studies are between  $5.8 \times 10^{13}$  and  
413  $9.3 \times 10^{14}$  #/veh/km for PN; and between  $1.7 \times 10^7$  and  $3.5 \times 10^7$  ng/veh/km for BC, which are in

1535  
1536  
1537  
1538  
1539  
1540  
1541  
1542  
1543  
1544  
1545  
1546  
1547  
1548  
1549  
1550  
1551  
1552  
1553  
1554  
1555  
1556  
1557  
1558  
1559  
1560  
1561  
1562  
1563  
1564  
1565  
1566  
1567  
1568  
1569  
1570  
1571  
1572  
1573  
1574  
1575  
1576  
1577  
1578  
1579  
1580  
1581  
1582  
1583  
1584  
1585  
1586  
1587  
1588  
1589  
1590  
1591  
1592  
1593

414 the same range as those estimated in this paper (Fig. 8), even fleet compositions are  
415 different in different countries and different years.



416  
417 **Fig. 8.** Comparison of PN, BC, formaldehyde and BTEX emission factors per vehicle in this work with emission factors  
418 estimated by bench measurements (Rehn 2013; Louis et al., 2016; Martinet et al., 2017) or by other in-situ studies (Ketznel  
419 et al., 2003; Gratmonev et al., 2004; Rose et al., 2005; Imhof et al., 2005; Jones et al., 2006; Westerdahl et al., 2009; Krecl et  
420 al., 2018).

421 The PCs emission factors in this work are also compared to the bench measurement  
422 (previous work). The bench emission factors of PN and BC obtained from diesel vehicles

1594  
1595  
1596 423 without particle filter and gasoline vehicles with direct injection system are in the same  
1597  
1598 424 range as the box plot. The impact of gasoline with direct injection system and Euro 4 diesel  
1599  
1600  
1601 425 vehicles on PN and BC emission has been observed with ANOVA analysis. However, for the  
1602  
1603 426 pre-Euro to Euro 3 old diesel vehicles, even they induce a high BC and PN emission with  
1604  
1605 427 individual vehicle measurement, their impact on BC and PN emission could be considered  
1606  
1607  
1608 428 either as significant but with a great uncertainty or not significant because they are  
1609  
1610 429 omnipresent in each one-hour period with very closed percentage in the fleet (10 to 20%).  
1611  
1612 430 These in-situ emission factors are also comparable with old HDVs without particle filter (PN  
1613  
1614 431 emission factors between  $5 \times 10^{13}$  and  $2 \times 10^{14}$  #/veh/km) (Giechaskiel et al., 2012), contrary to  
1615  
1616 432 recent HDVs equipped with DPF that induce lower PN emissions (between  $5 \times 10^{10}$  and  $2 \times 10^{12}$   
1617  
1618  
1619 433 #/veh/km) (Giechaskiel et al., 2018). For formaldehyde, the emission factors of Euro 3 and  
1620  
1621 434 Euro 4 diesel and gasoline vehicles are in the same range as the emission factors estimated  
1622  
1623 435 in this work. More recent Euro 5 and Euro 6 PCs seem to contribute less emission. For BTEX,  
1624  
1625 436 the Euro 5 gasoline DI vehicle is located above the box that might indicate its high impact on  
1626  
1627  
1628 437 BTEX emission. However, we want to attract special attention here, because only one Euro 5  
1629  
1630 438 gasoline DI vehicle data from bench has been provided (Louis et al., 2016). More vehicles for  
1631  
1632 439 each category should be tested on the chassis bench under similar experimental conditions  
1633  
1634 440 to confirm this observation.  
1635  
1636  
1637  
1638

#### 1639 441 **4. Conclusion**

1640  
1641  
1642 442 This paper aimed to estimate the emission factors of PN, BC, and several aliphatic,  
1643  
1644 443 aromatic and carbonyl compounds with a real fleet present on the measurement site. The  
1645  
1646 444 fleet composition characterized during the measurement campaign was comparable with  
1647  
1648  
1649  
1650  
1651  
1652

1653  
1654  
1655  
1656  
1657  
1658  
1659  
1660  
1661  
1662  
1663  
1664  
1665  
1666  
1667  
1668  
1669  
1670  
1671  
1672  
1673  
1674  
1675  
1676  
1677  
1678  
1679  
1680  
1681  
1682  
1683  
1684  
1685  
1686  
1687  
1688  
1689  
1690  
1691  
1692  
1693  
1694  
1695  
1696  
1697  
1698  
1699  
1700  
1701  
1702  
1703  
1704  
1705  
1706  
1707  
1708  
1709  
1710  
1711

445 the 2017 French fleet. A total of 140,076 vehicles were counted for seven days with about  
446 21,000 to 23,000 vehicles in the weekdays and 10,000 to 18,000 in the weekend.

447 The highest emissions were measured during the morning between 7:00 a.m. - 10:00  
448 a.m. and during the end of afternoon between 5:00 p.m. - 8:00 p.m. for the weekdays, and  
449 between 10:00 a.m. - 1:00 p.m. and between 5:00 p.m. - 8:00 p.m. for the Saturday. These  
450 periods correspond to traffic peaks. The higher emission measured in the morning can be  
451 explained by vehicle cold start, which emits large amounts of pollutants such as BC, PN,  
452 BTEX, and carbonyl compounds. PN and BC emission factors show a good correlation, except  
453 the Tuesday afternoon between 2:00 p.m. - 8:00 p.m. The emission factor values for BC  
454 decreased while those for PN increased sharply. This could imply that the particle number  
455 emissions, especially the PN size between [0-50] nm, measured during this afternoon were  
456 not due to road traffic.

457 The impacts of the fleet composition on the pollutant emissions were studied by ANOVA  
458 analyses. These analyses show the positive impact of the higher percentage of gasoline PCs  
459 between Euro 4 and Euro 6 and Euro 4 diesel PCs on the BC emissions and the higher  
460 percentage of diesel and gasoline PCs between pre-Euro and Euro 3 on toluene,  
461 ethylbenzene, m+p-xylene and o-xylene emissions. The higher percentage of Euro 4 diesel  
462 PCs induces higher emission of ethylbenzene, m+p-xylene and o-xylene. And the number of  
463 HDVs present in the weekdays does not induce a significant impact on measured pollutant  
464 emissions since 80% of HDVs in the fleet is recent HDVs ( $\geq$  Euro 4).

465 The emission factors per vehicle were studied with boxplots and compared to other  
466 emission factors calculated in previous in-situ studies and with bench measurement. PN and  
467 BC emission factors assume a symmetric distribution contrary to the BTEX, alkanes and  
468 carbonyl compounds emission factors. For PN and BC, the highest emission factors

1712  
1713  
1714  
1715  
1716  
1717  
1718  
1719  
1720  
1721  
1722  
1723  
1724  
1725  
1726  
1727  
1728  
1729  
1730  
1731  
1732  
1733  
1734  
1735  
1736  
1737  
1738  
1739  
1740  
1741  
1742  
1743  
1744  
1745  
1746  
1747  
1748  
1749  
1750  
1751  
1752  
1753  
1754  
1755  
1756  
1757  
1758  
1759  
1760  
1761  
1762  
1763  
1764  
1765  
1766  
1767  
1768  
1769  
1770

469 correspond to the same fleet composition with high percentage of diesel PCs. The highest  
470 emission factors for hexanal, benzene, toluene, ethylbenzene and nonane correspond to a  
471 fleet composition with high percentage of diesel PCs (85%) and old PCs (65%), and for m+p  
472 and o Xylene, they correspond to high percentage of old PCs (61%). These results have also  
473 been observed by the ANOVA analyses for toluene, ethylbenzene, m+p-xylene and o-xylene.  
474 The PN and BC emission factors estimated by other in-situ studies are in the same range as  
475 the emission factors estimated in this work. For the chassis bench comparison, the PN and  
476 BC emission factors estimated in this work are in the same range as those measured for  
477 diesels PCs without particle filter, gasoline PCs with direct injection system and old HDVs. For  
478 BTEX, bench emission factors are in the same range as in-situ emission factors estimated in  
479 this work.

1771  
1772  
1773  
1774  
1775  
1776  
1777  
1778  
1779  
1780  
1781  
1782  
1783  
1784  
1785  
1786  
1787  
1788  
1789  
1790  
1791  
1792  
1793  
1794  
1795  
1796  
1797  
1798  
1799  
1800  
1801  
1802  
1803  
1804  
1805  
1806  
1807  
1808  
1809  
1810  
1811  
1812  
1813  
1814  
1815  
1816  
1817  
1818  
1819  
1820  
1821  
1822  
1823  
1824  
1825  
1826  
1827  
1828  
1829

480 **Acknowledgements**

481 This work was supported by the CEGEP (1666C0001) project, which is funded by the French  
482 Environment and Energy Management Agency (ADEME).

483

484

485

486

487

488

489

490

491

492

493

494

495



1830  
1831  
1832  
1833  
1834  
1835  
1836  
1837  
1838  
1839  
1840  
1841  
1842  
1843  
1844  
1845  
1846  
1847  
1848  
1849  
1850  
1851  
1852  
1853  
1854  
1855  
1856  
1857  
1858  
1859  
1860  
1861  
1862  
1863  
1864  
1865  
1866  
1867  
1868  
1869  
1870  
1871  
1872  
1873  
1874  
1875  
1876  
1877  
1878  
1879  
1880  
1881  
1882  
1883  
1884  
1885  
1886  
1887  
1888

496 **Appendices**

497 **Table A.1**

498 Analytical methods for BTEX, carbonyl compounds, and PAH samples in the gas and particulate phases with quantification  
499 limit and uncertainty

Compound family	Cartridge type	Analytical technique	Standardized method	Quantification limit	Analytical uncertainty
<b>BTEX</b>					
Benzene	Tenax	ATD-GC/MS*	ISO 16000-6	10 ng/cartridge	20%
Toluene				1 ng/cartridge	
Ethylbenzene					
m-p,Xylene					
o-Xylene					
<b>Alkanes</b>					
Nonane	Tenax	ATD-GC/MS*	ISO 16000-6	1 ng/cartridge	20%
Decane					
Undecane					
Cyclopropane, Ethyl					
Cyclohexane, Ethyl					
<b>Carbonyl</b>					
Formaldehyde	DNPH	HPLC/UV#	ISO 16000-3	30 ng/cartridge	20%
Acetaldehyde					
Acetone					
Acrolein					
Propionaldehyde					
Crotonaldehyde					
Methacrolein					
Butanal					

Benzaldehyde					
Pentanal					
Hexanal					

\* ATD-GC-MS: Automated Thermal Desorption – Gas Chromatograph – Mass Spectrometer

# HPCL/UV: High Performance Liquid Chromatography/Ultra Violet Detector

**Table A.2**

Vehicle emission factors per hour for PN, BC, carbonyl compounds, BTEX and alkanes.

Pollutants		Emission factors (Min-Max)	Mean	Standard deviation
<b>PN</b> <b>(#/veh/km)</b>	Weekdays	$1.2 \times 10^{13} - 8.7 \times 10^{14}$	$2 \times 10^{14}$	$1.9 \times 10^{14}$
	Weekend	$6.1 \times 10^{13} - 5.3 \times 10^{14}$	$1.7 \times 10^{14}$	$1 \times 10^{14}$
<b>BC</b> <b>(ng/veh/km)</b>	Weekdays	$1.7 \times 10^6 - 2.2 \times 10^8$	$2.4 \times 10^7$	$2.8 \times 10^7$
	Weekend	$9 \times 10^6 - 9.3 \times 10^7$	$4.7 \times 10^7$	$2.1 \times 10^7$
<b>Formaldehyde</b> <b>(mg/veh/km)</b>	Weekdays	$1.6 \times 10^{-1} - 18$	3	3.9
	Weekend	$6 \times 10^{-2} - 13$	3.2	3.1
<b>Hexanal</b> <b>(mg/veh/km)</b>	Weekdays	$1.4 \times 10^{-2} - 2.8$	$7.1 \times 10^{-1}$	$8.8 \times 10^{-1}$
	Weekend	$2.1 \times 10^{-1} - 7.8$	1.8	1.8
<b>Benzene</b> <b>(mg/veh/km)</b>	Weekdays	$9.1 \times 10^{-2} - 7.4$	1.2	1.5
	Weekend	$2.3 \times 10^{-1} - 13.4$	2.4	3.5
<b>Toluene</b> <b>(mg/veh/km)</b>	Weekdays	$3.4 \times 10^{-2} - 11$	3	2.6
	Weekend	3.3 - 20.5	9.6	4.7
<b>Ethylbenzene</b> <b>(mg/veh/km)</b>	Weekdays	$1.3 \times 10^{-2} - 2.6$	$8.5 \times 10^{-1}$	$7 \times 10^{-1}$
	Weekend	$7 \times 10^{-1} - 5$	2.6	1.2

1948  
1949  
1950  
1951  
1952  
1953  
1954  
1955  
1956  
1957  
1958  
1959  
1960  
1961  
1962  
1963  
1964  
1965  
1966  
1967  
1968  
1969  
1970  
1971  
1972  
1973  
1974  
1975  
1976  
1977  
1978  
1979  
1980  
1981  
1982  
1983  
1984  
1985  
1986  
1987  
1988  
1989  
1990  
1991  
1992  
1993  
1994  
1995  
1996  
1997  
1998  
1999  
2000  
2001  
2002  
2003  
2004  
2005  
2006

<b>m+p Xylene</b>	Weekdays	$1.8 \times 10^{-1} - 6.8$	1.6	1.5
<b>(mg/veh/km)</b>	Weekend	1.4 - 10.4	6.4	2.8
<b>o Xylene</b>	Weekdays	$7 \times 10^{-2} - 2.9$	$7.1 \times 10^{-1}$	$6.4 \times 10^{-1}$
<b>(mg/veh/km)</b>	Weekend	$6.1 \times 10^{-1} - 5.9$	3.2	1.6
<b>Nonane</b>	Weekdays	$3.5 \times 10^{-2} - 3.3$	$8 \times 10^{-1}$	$7.5 \times 10^{-1}$
<b>(mg/veh/km)</b>	Weekend	$3.3 \times 10^{-1} - 4.9$	2	1.1
<b>Decane</b>	Weekdays	$1.5 \times 10^{-1} - 15.2$	1.5	3.1
<b>(mg/veh/km)</b>	Weekend	$4.1 \times 10^{-2} - 4.5$	1.7	1.3
<b>Undecane</b>	Weekdays	$5.5 \times 10^{-2} - 4.8$	$5.3 \times 10^{-1}$	$8..9 \times 10^{-1}$
<b>(mg/veh/km)</b>	Weekend	$3.5 \times 10^{-2} - 2.1$	1.1	$7 \times 10^{-1}$

506

507

508 **Table A.3**

509 Example of COPERT input data for calculating NO<sub>x</sub> emission factors

Category	Fuel	Segment	Euro Standard	Stock [n]	Mean Activity [km/year]	Urban Speed [km/h]
Passenger Cars	Gasoline	Small	PRE ECE	0	0	25
Passenger Cars	Gasoline	Small	Euro 1	1	4077	25
Passenger Cars	Gasoline	Small	Euro 2	2	5055	25
Passenger Cars	Gasoline	Small	Euro 3	1	6820	25
Passenger Cars	Gasoline	Small	Euro 4	2	8508	25
Passenger Cars	Gasoline	Small	Euro 5	1	11007	25
Passenger Cars	Gasoline	Small	Euro 6	5	13309	25
Passenger Cars	Gasoline	Medium	PRE ECE	0	0	25
Passenger Cars	Gasoline	Medium	Euro 1	2	5398	25
Passenger Cars	Gasoline	Medium	Euro 2	4	6672	25
Passenger Cars	Gasoline	Medium	Euro 3	5	8995	25
Passenger Cars	Gasoline	Medium	Euro 4	0	11319	25

2007							
2008							
2009	Passenger Cars	Gasoline	Medium	Euro 5	2	14555	25
2010	Passenger Cars	Gasoline	Medium	Euro 6	3	17592	25
2011	Passenger Cars	Gasoline	Medium	Euro 6	3	17592	25
2012	Passenger Cars	Gasoline	Large-SUV-Executive	PRE ECE	0	0	25
2013	Passenger Cars	Gasoline	Large-SUV-Executive	PRE ECE	0	0	25
2014	Passenger Cars	Gasoline	Large-SUV-Executive	Euro 1	0	5610	25
2015	Passenger Cars	Gasoline	Large-SUV-Executive	Euro 2	0	7069	25
2016	Passenger Cars	Gasoline	Large-SUV-Executive	Euro 2	0	7069	25
2017	Passenger Cars	Gasoline	Large-SUV-Executive	Euro 3	0	9523	25
2018	Passenger Cars	Gasoline	Large-SUV-Executive	Euro 3	0	9523	25
2019	Passenger Cars	Gasoline	Large-SUV-Executive	Euro 4	1	12000	25
2020	Passenger Cars	Gasoline	Large-SUV-Executive	Euro 5	0	15454	25
2021	Passenger Cars	Gasoline	Large-SUV-Executive	Euro 5	0	15454	25
2022	Passenger Cars	Gasoline	Large-SUV-Executive	Euro 6	3	18619	25
2023	Passenger Cars	Diesel	Mini	Euro 4	10	15608	25
2024	Passenger Cars	Diesel	Mini	Euro 4	10	15608	25
2025	Passenger Cars	Diesel	Mini	Euro 5	5	17572	25
2026	Passenger Cars	Diesel	Mini	Euro 6	5	19	25
2027	Passenger Cars	Diesel	Mini	Euro 6	5	19	25
2028	Passenger Cars	Diesel	Small	Euro 1	1	10957	25
2029	Passenger Cars	Diesel	Small	Euro 2	3	12152	25
2030	Passenger Cars	Diesel	Small	Euro 2	3	12152	25
2031	Passenger Cars	Diesel	Small	Euro 3	7	13560	25
2032	Passenger Cars	Diesel	Small	Euro 3	7	13560	25
2033	Passenger Cars	Diesel	Small	Euro 4	16	15236	25
2034	Passenger Cars	Diesel	Small	Euro 5	12	17146	25
2035	Passenger Cars	Diesel	Small	Euro 5	12	17146	25
2036	Passenger Cars	Diesel	Small	Euro 6	17	18122	25
2037	Passenger Cars	Diesel	Large-SUV-Executive	Euro 1	0	11376	25
2038	Passenger Cars	Diesel	Large-SUV-Executive	Euro 1	0	11376	25
2039	Passenger Cars	Diesel	Large-SUV-Executive	Euro 2	1	12489	25
2040	Passenger Cars	Diesel	Large-SUV-Executive	Euro 3	2	14286	25
2041	Passenger Cars	Diesel	Large-SUV-Executive	Euro 3	2	14286	25
2042	Passenger Cars	Diesel	Large-SUV-Executive	Euro 4	2	15807	25
2043	Passenger Cars	Diesel	Large-SUV-Executive	Euro 4	2	15807	25
2044	Passenger Cars	Diesel	Large-SUV-Executive	Euro 5	2	17770	25
2045	Passenger Cars	Diesel	Large-SUV-Executive	Euro 5	2	17770	25
2046	Passenger Cars	Diesel	Large-SUV-Executive	Euro 6	2	18788	25
2047	Light Commercial Vehicles	Diesel	N1-II	Conventional	0	2313	25
2048	Light Commercial Vehicles	Diesel	N1-II	Euro 1	0	5012	25
2049	Light Commercial Vehicles	Diesel	N1-II	Euro 1	0	5012	25
2050	Light Commercial Vehicles	Diesel	N1-II	Euro 2	0	7490	25
2051	Light Commercial Vehicles	Diesel	N1-II	Euro 2	0	7490	25
2052	Light Commercial Vehicles	Diesel	N1-II	Euro 3	2	10979	25
2053	Light Commercial Vehicles	Diesel	N1-II	Euro 3	2	10979	25
2054	Light Commercial Vehicles	Diesel	N1-II	Euro 4	9	15840	25
2055	Light Commercial Vehicles	Diesel	N1-II	Euro 4	9	15840	25
2056	Light Commercial Vehicles	Diesel	N1-II	Euro 5	13	21249	25
2057	Light Commercial Vehicles	Diesel	N1-II	Euro 5	13	21249	25
2058	Light Commercial Vehicles	Diesel	N1-II	Euro 6	23	25636	25
2059	Light Commercial Vehicles	Diesel	N1-II	Euro 6	23	25636	25
2060	Heavy Duty Trucks	Diesel	Rigid <=7,5 t	Euro I	0	846	25
2061	Heavy Duty Trucks	Diesel	Rigid <=7,5 t	Euro II	0	4475	25
2062							
2063							
2064							
2065							

2066							
2067							
2068							
2069	Heavy Duty Trucks	Diesel	Rigid <=7,5 t	Euro III	0	11207	25
2070	Heavy Duty Trucks	Diesel	Rigid <=7,5 t	Euro IV	0	19789	25
2071							
2072	Heavy Duty Trucks	Diesel	Rigid <=7,5 t	Euro V	0	32935	25
2073	Heavy Duty Trucks	Diesel	Rigid <=7,5 t	Euro VI	0	50409	25
2074							
2075	Heavy Duty Trucks	Diesel	Rigid 7,5 - 12 t	Euro I	0	903	25
2076	Heavy Duty Trucks	Diesel	Rigid 7,5 - 12 t	Euro II	0	4404	25
2077							
2078	Heavy Duty Trucks	Diesel	Rigid 7,5 - 12 t	Euro III	0	11191	25
2079	Heavy Duty Trucks	Diesel	Rigid 7,5 - 12 t	Euro IV	1	19733	25
2080							
2081	Heavy Duty Trucks	Diesel	Rigid 7,5 - 12 t	Euro V	1	33797	25
2082	Heavy Duty Trucks	Diesel	Rigid 7,5 - 12 t	Euro VI	0	53438	25
2083							
2084	Heavy Duty Trucks	Diesel	Rigid 14 - 20 t	Euro I	0	952	25
2085	Heavy Duty Trucks	Diesel	Rigid 14 - 20 t	Euro II	0	4598	25
2086							
2087	Heavy Duty Trucks	Diesel	Rigid 14 - 20 t	Euro III	0	11195	25
2088	Heavy Duty Trucks	Diesel	Rigid 14 - 20 t	Euro IV	0	19669	25
2089							
2090	Heavy Duty Trucks	Diesel	Rigid 14 - 20 t	Euro V	0	33306	25
2091	Heavy Duty Trucks	Diesel	Rigid 14 - 20 t	Euro VI	1	50609	25
2092							
2093	Heavy Duty Trucks	Diesel	Rigid 20 - 26 t	Euro I	0	983	25
2094	Heavy Duty Trucks	Diesel	Rigid 20 - 26 t	Euro II	0	4800	25
2095							
2096	Heavy Duty Trucks	Diesel	Rigid 20 - 26 t	Euro III	0	11470	25
2097	Heavy Duty Trucks	Diesel	Rigid 20 - 26 t	Euro IV	0	19795	25
2098							
2099	Heavy Duty Trucks	Diesel	Rigid 20 - 26 t	Euro V	0	33762	25
2100	Heavy Duty Trucks	Diesel	Rigid 20 - 26 t	Euro VI	0	50832	25
2101							
2102	Heavy Duty Trucks	Diesel	Rigid 26 - 28 t	Conventional	0	0	25
2103							
2104	Heavy Duty Trucks	Diesel	Rigid 26 - 28 t	Euro I	0	995	25
2105	Heavy Duty Trucks	Diesel	Rigid 26 - 28 t	Euro II	0	4999	25
2106							
2107	Heavy Duty Trucks	Diesel	Rigid 26 - 28 t	Euro III	0	11940	25
2108	Heavy Duty Trucks	Diesel	Rigid 26 - 28 t	Euro IV	0	19884	25
2109							
2110	Heavy Duty Trucks	Diesel	Rigid 26 - 28 t	Euro V	2	34084	25
2111	Heavy Duty Trucks	Diesel	Rigid 26 - 28 t	Euro VI	0	50947	25
2112							
2113	Buses	Diesel	Urban Buses Midi <=15 t	Euro IV	0	27800	25
2114							
2115	Buses	Diesel	Urban Buses Midi <=15 t	Euro V	0	38074	25
2116							
2117	Buses	Diesel	Urban Buses Midi <=15 t	Euro VI	0	45582	25
2118							
2119	Buses	Diesel	Urban Buses Articulated >18 t	Conventional	0	2000	25
2120							
2121	Buses	Diesel	Urban Buses Articulated >18 t	Euro I	0	5823	25
2122							
2123							
2124							

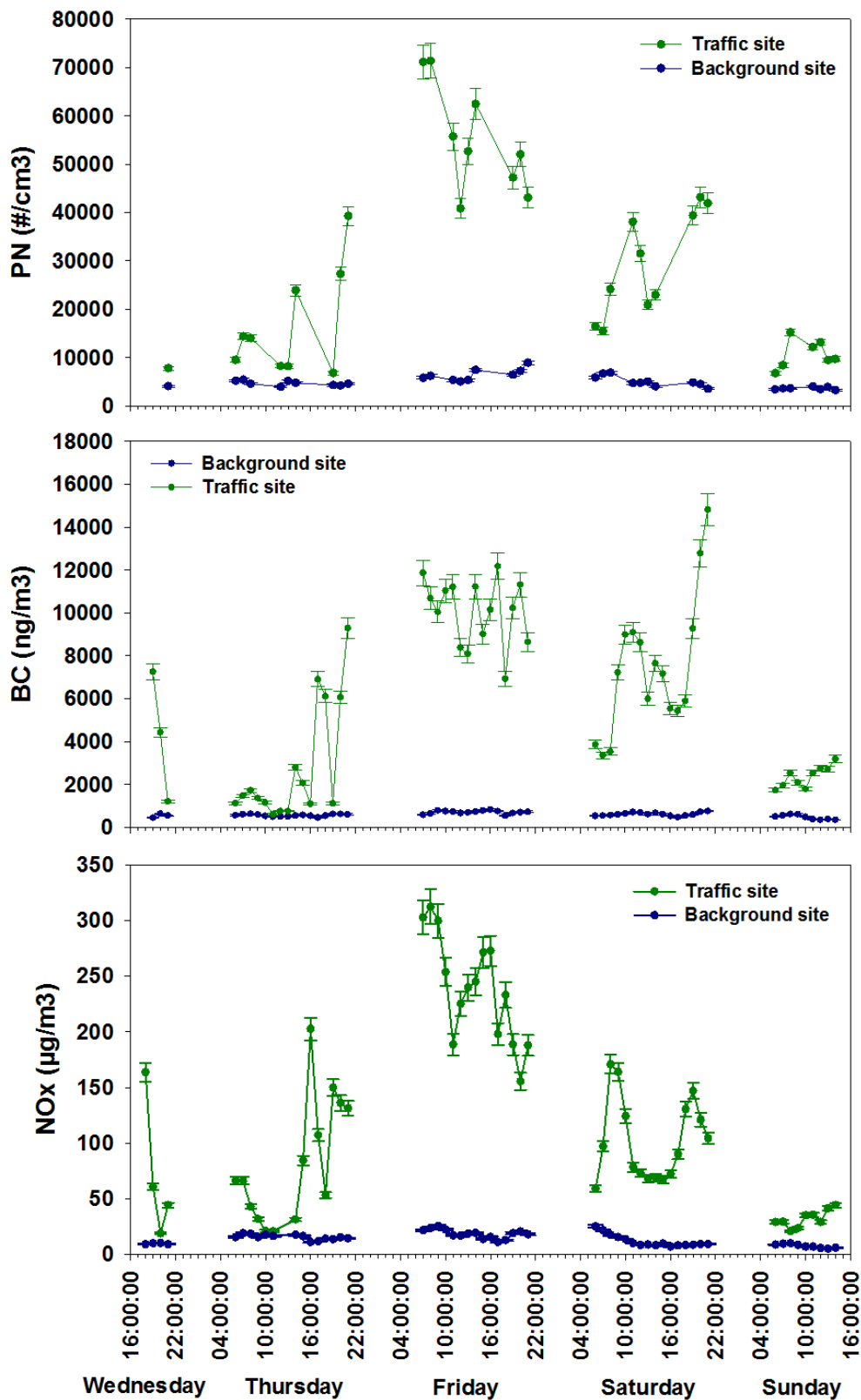
2125							
2126							
2127			Urban Buses				
2128	Buses	Diesel	Articulated >18 t	Euro II	0	11357	25
2129			Urban Buses				
2130	Buses	Diesel	Articulated >18 t	Euro III	0	19120	25
2131			Urban Buses				
2132	Buses	Diesel	Articulated >18 t	Euro IV	1	27763	25
2133			Urban Buses				
2134	Buses	Diesel	Articulated >18 t	Euro V	1	37992	25
2135			Urban Buses				
2136	Buses	Diesel	Articulated >18 t	Euro VI	0	45633	25

---

510

2137  
2138  
2139  
2140  
2141  
2142  
2143  
2144  
2145  
2146  
2147  
2148  
2149  
2150  
2151  
2152  
2153  
2154  
2155  
2156  
2157  
2158  
2159  
2160  
2161  
2162  
2163  
2164  
2165  
2166  
2167  
2168  
2169  
2170  
2171  
2172  
2173  
2174  
2175  
2176  
2177  
2178  
2179  
2180  
2181  
2182  
2183

2184  
2185  
2186  
2187  
2188  
2189  
2190  
2191  
2192  
2193  
2194  
2195  
2196  
2200  
2201  
2202  
2203  
2204  
2205  
2206  
2207  
2208  
2209  
2210  
2211  
2212  
2213  
2214  
2215  
2216  
2217  
2218  
2219  
2220  
2221  
2222  
2223  
2224  
2225  
2226  
2227  
2228  
2229  
2230  
2231  
2232  
2233  
2234  
2235  
2236  
2237  
2238  
2239  
2240  
2241  
2242



511  
512 **Fig. A.1.** Time profiles of PN, BC and NO<sub>x</sub> concentrations on the traffic site and the background site From Wednesday to  
513 Sunday.

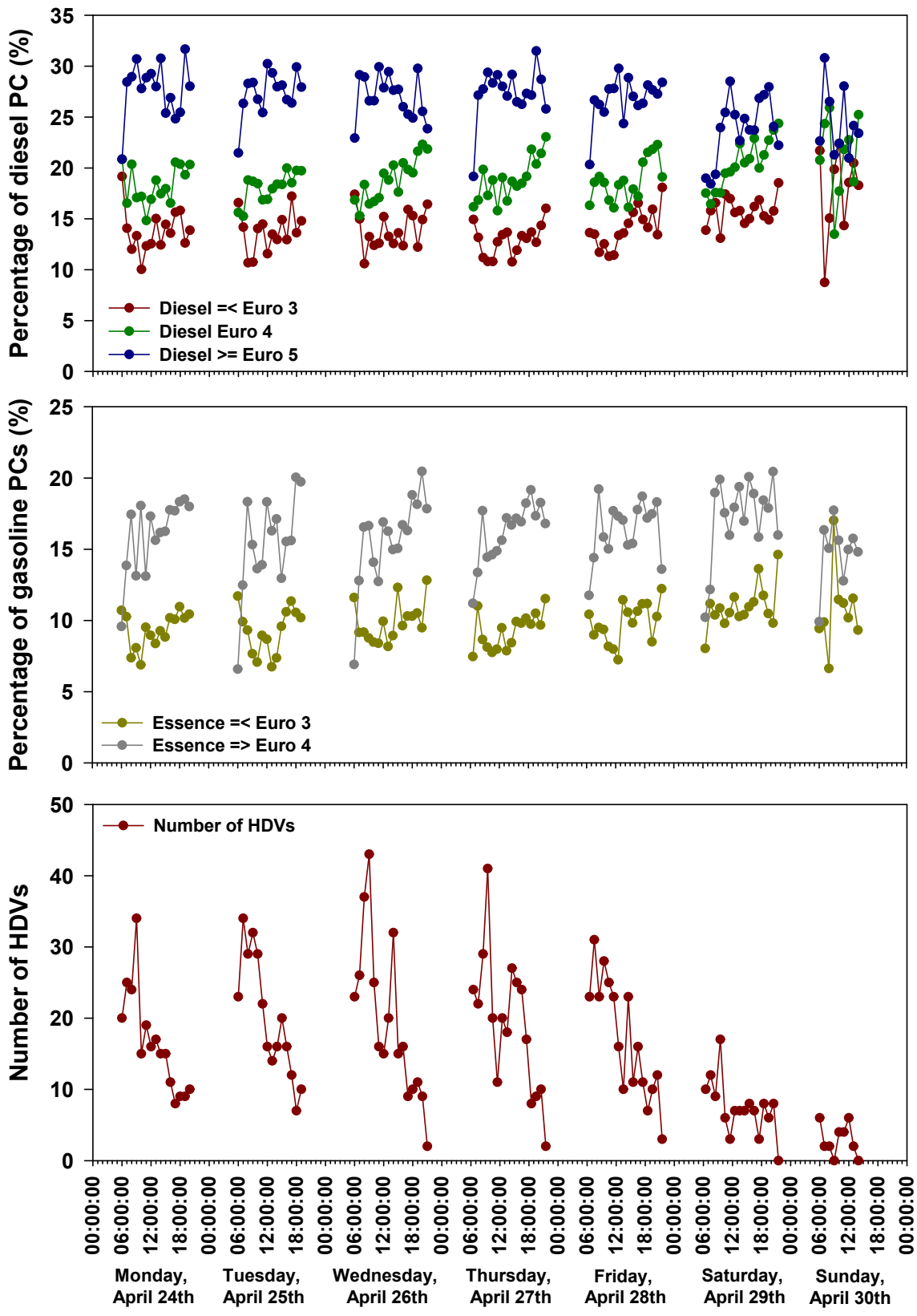


Fig. A.2. Time profiles of the percentages of the diesel PCs, the percentages of gasoline PCs and the numbers of HDVs on the measurement week.



2302  
2303  
2304 **517 References**  
2305  
2306

- 2307 **518** Alves, C.A., Lopes, D.J., Calvo, A.I., Evtyugina, M., Rocha, S., Nunes, T., 2015. Emissions from light-  
2308  
2309 **519** duty diesel and gasoline in-use vehicles measured on chassis dynamometer test cycles.  
2310  
2311  
2312 **520** Aerosol Air Qual Res 15, 99–116.  
2313  
2314 **521** Andre, M., Roche, A.L., Bourcier, L., 2014. Statistiques de parcs et trafic pour le calcul des  
2315  
2316 **522** émissions de polluants des transports routiers en France. Final report (in French), IFSTTAR  
2317  
2318 **523** LTE, available at. <http://www.ademe.fr/statistiques-parcstrafic-calcul-emissions-polluants->  
2319  
2320  
2321 **524** transports-routiers-france.  
2322  
2323 **525** Amato, F., Nava, S., Lucarelli, F., Querol, X., Alastuey, A., Baldasano, J.M., Pandolfi, M., 2010. A  
2324  
2325 **526** comprehensive assessment of PM emissions from paved roads: Real-world Emission Factors  
2326  
2327 **527** and intense street cleaning trials. Science of The Total Environment 408, 4309–4318.  
2328  
2329 **528** Bukowiecki, N., Lienemann, P., Hill, M., Furger, M., Richard, A., Amato, F., Prévôt, A.S.H.,  
2330  
2331 **529** Baltensperger, U., Buchmann, B., Gehrig, R., 2010. PM10 emission factors for non-exhaust  
2332  
2333 **530** particles generated by road traffic in an urban street canyon and along a freeway in  
2334  
2335 **531** Switzerland. Atmospheric Environment 44, 2330–2340.  
2336  
2337 **532** Anagaratna, M.R., Jayne, J.T., Ghertner, D.A., Herndon, S., Shi, Q., Jimenez, J.L., Silva, P.J.,  
2338  
2339 **533** Williams, P., Lanni, T., Drewnick, F., others, 2004. Chase studies of particulate emissions from  
2340  
2341 **534** in-use New York City vehicles. Aerosol Science and Technology 38, 555–573.  
2342  
2343 **535** Aplain, I., Cazier, F., Nouali, H., Mercier, A., Déchaux, J.-C., Nollet, V., Joumard, R., André, J.-M.,  
2344  
2345 **536** Vidon, R., 2006. Emissions of unregulated pollutants from European gasoline and diesel  
2346  
2347 **537** passenger cars. Atmospheric Environment 40, 5954–5966.  
2348  
2349 **538** Banelli, R.M., Di Nocera, A., 2018. Customer perceptions of Japanese foods in Italy. Journal of  
2350  
2351 **539** Ethnic Foods.  
2352  
2353  
2354  
2355  
2356  
2357  
2358  
2359  
2360

2361  
2362  
2363 540 Giechaskiel, B., Mamakos, A., Andersson, J., Dilara, P., Martini, G., Schindler, W., Bergmann, A.,  
2364  
2365 541 2012. Measurement of Automotive Nonvolatile Particle Number Emissions within the  
2366  
2367 European Legislative Framework: A Review. *Aerosol Science and Technology* 46, 719–749.  
2368 542  
2369  
2370 543 Giechaskiel, B., 2018. Solid Particle Number Emission Factors of Euro VI Heavy-Duty Vehicles on  
2371  
2372 544 the Road and in the Laboratory. *Int J Environ Res Public Health* 15.  
2373  
2374 545 Sietl, J.K., Lawrence, R., Thorpe, A.J., Harrison, R.M., 2010. Identification of brake wear particles  
2375 546 and derivation of a quantitative tracer for brake dust at a major road. *Atmospheric*  
2376  
2377 *Environment* 44, 141–146.  
2378 547  
2379  
2380 548 Budda, N., Fruin, S., Delfino, R.J., Sioutas, C., 2013. Efficient determination of vehicle emission  
2381 549 factors by fuel use category using on-road measurements: downward trends on Los Angeles  
2382  
2383 freight corridor I-710. *Atmospheric chemistry and physics* 13, 347–357.  
2384 550  
2385  
2386 551 Imhof, D., Weingartner, E., Ordóñez, C., Gehrig, R., Hill, M., Buchmann, B., Baltensperger, U.,  
2387  
2388 552 2005. Real-world emission factors of fine and ultrafine aerosol particles for different traffic  
2389  
2390 553 situations in Switzerland. *Environmental science & technology* 39, 8341–8350.  
2391  
2392  
2393 554 Ježek, I., Drinovec, L., Ferrero, L., Carrero, M., Močnik, G., 2015. Determination of car on-road  
2394  
2395 555 black carbon and particle number emission factors and comparison between mobile and  
2396  
2397 556 stationary measurements. *Atmospheric Measurement Techniques* 8, 43–55.  
2398  
2399  
2400 557 Johansson, C., Norman, M., Burman, L., 2009. Road traffic emission factors for heavy metals.  
2401  
2402 558 *Atmospheric Environment, Urban Air Quality* 43, 4681–4688.  
2403  
2404  
2405 559 Jones, A.M., Harrison, R.M., 2006. Estimation of the emission factors of particle number and mass  
2406  
2407 560 fractions from traffic at a site where mean vehicle speeds vary over short distances.  
2408  
2409 561 *Atmospheric Environment* 40, 7125–7137.  
2410  
2411  
2412 562 Dumard, R., André, M., Vidon, R., Tassel, P., Pruvost, C., 2000. Influence of driving cycles on unit  
2413  
2414 563 emissions from passenger cars. *Atmospheric environment* 34, 4621–4628.  
2415  
2416  
2417  
2418  
2419

2420  
2421  
2422 564 Kam, W., Liacos, J.W., Schauer, J.J., Delfino, R.J., Sioutas, C., 2012. On-road emission factors of PM  
2423  
2424 565 pollutants for light-duty vehicles (LDVs) based on urban street driving conditions.  
2425  
2426  
2427 566 Atmospheric Environment 61, 378–386.  
2428  
2429 567 Karjalainen, P., Pirjola, L., Heikkilä, J., Lähde, T., Tzamkiozis, T., Ntziachristos, L., Keskinen, J.,  
2430  
2431 568 Rönkkö, T., 2014. Exhaust particles of modern gasoline vehicles: A laboratory and an on-road  
2432  
2433 569 study. Atmospheric Environment 97, 262–270.  
2434  
2435  
2436 570 Ketznel, M., Wählén, P., Berkowicz, R., Palmgren, F., 2003. Particle and trace gas emission factors  
2437  
2438 571 under urban driving conditions in Copenhagen based on street and roof-level observations.  
2439  
2440 572 Atmospheric Environment 37, 2735–2749.  
2441  
2442  
2443 573 Krecl, P., Johansson, C., Targino, A.C., Ström, J., Burman, L., 2017. Trends in black carbon and size-  
2444  
2445 574 resolved particle number concentrations and vehicle emission factors under real-world  
2446  
2447 575 conditions. Atmospheric Environment 165, 155–168.  
2448  
2449 576 Krecl, P., Targino, A.C., Landi, T.P., Ketznel, M., 2018. Determination of black carbon, PM 2.5,  
2450  
2451 577 particle number and NOx emission factors from roadside measurements and their  
2452  
2453 578 implications for emission inventory development. Atmospheric Environment.  
2454  
2455  
2456 579 Dewtas, J., 2007. Air pollution combustion emissions: Characterization of causative agents and  
2457  
2458 580 mechanisms associated with cancer, reproductive, and cardiovascular effects. Mutation  
2459  
2460 581 Research/Reviews in Mutation Research, The Sources and Potential Hazards of Mutagens in  
2461  
2462 582 Complex Environmental Matrices - Part II 636, 95–133.  
2463  
2464  
2465 583 Jiang, B., Ge, Y., Tan, J., Han, X., Gao, L., Hao, L., Ye, W., Dai, P., 2013. Comparison of PM  
2466  
2467 584 emissions from a gasoline direct injected (GDI) vehicle and a port fuel injected (PFI) vehicle  
2468  
2469 585 measured by electrical low pressure impactor (ELPI) with two fuels: Gasoline and M15  
2470  
2471 586 methanol gasoline. Journal of Aerosol Science 57, 22–31.  
2472  
2473  
2474  
2475  
2476  
2477  
2478

2479  
2480  
2481  
2482  
2483  
2484  
2485  
2486  
2487  
2488  
2489  
2490  
2491  
2492  
2493  
2494  
2495  
2496  
2497  
2498  
2499  
2500  
2501  
2502  
2503  
2504  
2505  
2506  
2507  
2508  
2509  
2510  
2511  
2512  
2513  
2514  
2515  
2516  
2517  
2518  
2519  
2520  
2521  
2522  
2523  
2524  
2525  
2526  
2527  
2528  
2529  
2530  
2531  
2532  
2533  
2534  
2535  
2536  
2537

587 Liu, Y., Martinet, S., Louis, C., Pasquier, A., Tassel, P., Perret, P., 2017. Emission Characterization of  
588 In-Use Diesel and Gasoline Euro 4 to Euro 6 Passenger Cars Tested on Chassis Dynamometer  
589 Bench and Emission Model Assessment. *Aerosol and Air Quality Research* 17, 2289–2299.

590 Dohmeyer, A., Lambrecht, U., Peranic, Z., Boesinger, R. 2002. Validation of vehicle road PM10  
591 emission models by the Karlsruhe PM10 validation data set and the results of the regular  
592 German state monitoring stations. In: *Proceedings of the Eighth International Conference on*  
593 *Harmonisation within atmospheric Dispersion Modelling for Regulatory Purposes*. Sofia,  
594 Bulgaria.

595 Louis, C., Liu, Y., Tassel, P., Perret, P., Chaumont, A., André, M., 2016. PAH, BTEX, carbonyl  
596 compound, black-carbon, NO<sub>2</sub> and ultrafine particle dynamometer bench emissions for Euro  
597 4 and Euro 5 diesel and gasoline passenger cars. *Atmospheric Environment* 141, 80–95.

598 Martinet, S., Liu, Y., Louis, C., Tassel, P., Perret, P., Chaumont, A., André, M., 2017. Euro 6  
599 Unregulated Pollutant Characterization and Statistical Analysis of After-Treatment Device  
600 and Driving-Condition Impact on Recent Passenger-Car Emissions. *Environ. Sci. Technol.* 51,  
601 5847–5855.

602 Ling, Z., Wubulihairan, M., Yang, F., 2012. PM, NO<sub>x</sub> and butane emissions from on-road vehicle  
603 fleets in Hong Kong and their implications on emission control policy. *Atmospheric*  
604 *Environment* 61, 265–274.

605 Ntziachristos, L., Papadimitriou, G., Ligterink, N., Hausberger, S., 2016. Implications of diesel  
606 emissions control failures to emission factors and road transport NO<sub>x</sub> evolution.  
607 *Atmospheric Environment* 141, 542–551.

608 Driscoll, R., ApSimon, H.M., Oxley, T., Molden, N., Stettler, M.E., Thiyagarajah, A., 2016. A  
609 Portable Emissions Measurement System (PEMS) study of NO<sub>x</sub> and primary NO<sub>2</sub> emissions

2538  
2539  
2540  
2541  
2542  
2543  
2544  
2545  
2546  
2547  
2548  
2549  
2550  
2551  
2552  
2553  
2554  
2555  
2556  
2557  
2558  
2559  
2560  
2561  
2562  
2563  
2564  
2565  
2566  
2567  
2568  
2569  
2570  
2571  
2572  
2573  
2574  
2575  
2576  
2577  
2578  
2579  
2580  
2581  
2582  
2583  
2584  
2585  
2586  
2587  
2588  
2589  
2590  
2591  
2592  
2593  
2594  
2595  
2596

610 from Euro 6 diesel passenger cars and comparison with COPERT emission factors.

611 Atmospheric Environment 145, 81–91.

612 Pant, P., Harrison, R.M., 2013. Estimation of the contribution of road traffic emissions to

613 particulate matter concentrations from field measurements: a review. Atmospheric

614 Environment 77, 78–97.

615 Rehn, L.P., 2013. Caractérisation et impacts des émissions de polluants du transport routier :

616 Apports méthodologiques et cas d'études en Rhône Alpes. (phdthesis). Université de

617 Grenoble.

618 Rexeis, M., 2013. Update of Emission Factors for EURO 5 and EURO 6 vehicles for the HBEFA

619 Version 3.2. Report No. I-31/2013/ Rex EM-I 2011/20/679 from 06.12.2013.

620 Rose, D., Wehner, B., Ketzler, M., Engler, C., Voigtländer, J., Tuch, T., Wiedensohler, A., 2005.

621 Atmospheric number size distributions of soot particles and estimation of emission factors.

622 Atmospheric Chemistry and Physics Discussions 5, 10125–10154.

623 Sluder, C.S., West, B.H., 2000. Catalyzed diesel particulate filter performance in a light-duty

624 vehicle. SAE Technical Paper.

625 Sydbom, A., Blomberg, A., Parnia, S., Stenfors, N., Sandström, T., Dahlén, S.-E., 2001. Health

626 effects of diesel exhaust emissions. European Respiratory Journal 17, 733–746.

627 Wang, X., Westerdahl, D., Chen, L.C., Wu, Y., Hao, J., Pan, X., Guo, X., Zhang, K.M., 2009.

628 Evaluating the air quality impacts of the 2008 Beijing Olympic Games: on-road emission

629 factors and black carbon profiles. Atmospheric Environment 43, 4535–4543.

630 Westerdahl, D., Wang, X., Pan, X., Zhang, K.M., 2009. Characterization of on-road vehicle emission

631 factors and microenvironmental air quality in Beijing, China. Atmospheric Environment 43,

632 697–705.

2597  
2598  
2599  
2600  
2601  
2602  
2603  
2604  
2605  
2606  
2607  
2608  
2609  
2610  
2611  
2612  
2613  
2614  
2615  
2616  
2617  
2618  
2619  
2620  
2621  
2622  
2623  
2624  
2625  
2626  
2627  
2628  
2629  
2630  
2631  
2632  
2633  
2634  
2635  
2636  
2637  
2638  
2639  
2640  
2641  
2642  
2643  
2644  
2645  
2646  
2647  
2648  
2649  
2650  
2651  
2652  
2653  
2654  
2655

630 Westerholm, R., Christensen, A., Rosén, A. & Ake, 1996. Regulated and unregulated exhaust

634 emissions from two three-way catalyst equipped gasoline fuelled vehicles. Atmospheric

635 Environment 30, 3529–3536.

636 Wildt, A. R., & Ahtola, O. T. (1978). Analysis of covariance. Newbury Park, CA: Sage Publications.

637 View

638 Li-Tuomi, T., Aarnio, P., Pirjola, L., Mäkelä, T., Hillamo, R., Jantunen, M., 2005. Emissions of fine

639 particles, NOx, and CO from on-road vehicles in Finland. Atmospheric Environment 39,

640 6696–6706.

641 Yang, L., Franco, V., Mock, P., Kolke, R., Zhang, S., Wu, Y. and German, J., 2015. Experimental

642 Assessment of NOx Emissions from 73 Euro 6 Diesel Passenger Cars. *Environ. Sci. Technol.*

643 49: 14409–14415.

644

645

646