



HAL
open science

How to Evolve a Perianth: A Review of Cadastral Mechanisms for Perianth Identity

Marie Monniaux, Michiel Vandebussche

► To cite this version:

Marie Monniaux, Michiel Vandebussche. How to Evolve a Perianth: A Review of Cadastral Mechanisms for Perianth Identity. *Frontiers in Plant Science*, 2018, 9, <10.3389/fpls.2018.01573>. <hal-02349121>

HAL Id: hal-02349121

<https://hal.science/hal-02349121v1>

Submitted on 5 Nov 2019

HAL is a multi-disciplinary open access archive for the deposit and dissemination of scientific research documents, whether they are published or not. The documents may come from teaching and research institutions in France or abroad, or from public or private research centers.

L'archive ouverte pluridisciplinaire **HAL**, est destinée au dépôt et à la diffusion de documents scientifiques de niveau recherche, publiés ou non, émanant des établissements d'enseignement et de recherche français ou étrangers, des laboratoires publics ou privés.



Distributed under a Creative Commons CC BY 4.0 - Attribution - International License



How to Evolve a Perianth: A Review of Cadastral Mechanisms for Perianth Identity

Marie Monniaux* and Michiel Vandenbussche

Laboratoire Reproduction et Développement des Plantes, Université de Lyon, ENS de Lyon, UCB Lyon 1, CNRS, INRA, Lyon, France

OPEN ACCESS

Edited by:

Annette Becker,
Justus-Liebig-Universität Gießen,
Germany

Reviewed by:

Elena M. Kramer,
Harvard University, United States
Rainer Melzer,
University College Dublin, Ireland

*Correspondence:

Marie Monniaux
marie.monniaux@ens-lyon.fr

Specialty section:

This article was submitted to
Plant Evolution and Development,
a section of the journal
Frontiers in Plant Science

Received: 18 June 2018

Accepted: 09 October 2018

Published: 29 October 2018

Citation:

Monniaux M and
Vandenbussche M (2018) How
to Evolve a Perianth: A Review
of Cadastral Mechanisms for Perianth
Identity. *Front. Plant Sci.* 9:1573.
doi: 10.3389/fpls.2018.01573

The flower of angiosperms is considered to be a major evolutionary innovation that impacted the whole biome. In particular, two properties of the flower are classically linked to its ecological success: bisexuality and a differentiated perianth with sepals and petals. Although the molecular basis for floral organ identity is well understood in extant species and summarized in the famous ABC model, how perianth identity appeared during evolution is still unknown. Here we propose that cadastral mechanisms that maintain reproductive organ identities to the center of the flower could have supported perianth evolution. In particular, repressing B- and C-class genes expression toward the inner whorls of the flower, is a key process to isolate domains with sepal and petal identity in the outer whorls. We review from the literature in model species the diverse regulators that repress B- and C-class genes expression to the center of the flower. This review highlights the existence of both unique and conserved repressors between species, and possible candidates to investigate further in order to shed light on perianth evolution.

Keywords: perianth, flower, evolution, petal, sepal, ABC model

INTRODUCTION

Flowering plants (angiosperms) gather more than 350,000 species, a stunning number in regard to all other land plants that count no more than 35,000 species (The Plant List, 2013). This dominance of angiosperms might be partly due to the flower, a highly efficient structure for reproduction (Regal, 1977). The flower has some key features such as bisexuality, a closed carpel, and a perianth (i.e., the structure that surrounds the reproductive organs, typically organized in sepals, and petals) that can attract pollinators and therefore participate in the speciation process (Fenster et al., 2004). This is mainly supported by the petals, that display a complex set of traits such as color, fragrance, shape, or epidermal cell patterns (Glover, 2014). Petals can also assist in flower opening (van Doorn and Van Meeteren, 2003), while sepals mainly protect the other floral organs. In this review we will use the term petal and sepal as a functional definition for all petaloid (showy and playing an attractive role) and sepaloid (greenish and playing a protective role) organs, respectively, irrespective of their position in the flower. With this definition, all petals (and all sepals) are therefore not necessarily homologous organs (Ronse De Craene and Brockington, 2013).

Although recent research has led to considerable progress on the question of the origin of the flower (Moyroud et al., 2017; Sauquet et al., 2017), large questions are still open.

In particular, the timing and order of events leading from the reproductive structure of the most recent common ancestor of seed plants – likely a unisexual structure without perianth – to the ancestral flower – likely a bisexual flower with an undifferentiated perianth of petals – is still unknown (Sauquet and Magallón, 2018). These events include transition from unisexuality to bisexuality, compression of the reproductive axis, evolution of a perianth and evolution of a closed carpel (Specht and Bartlett, 2009; Sauquet and Magallón, 2018; Scutt, 2018). Despite this uncertainty it seems reasonable to assume that the perianth evolved last, after bisexuality, axis compression and carpel evolution (Baum and Hileman, 2007). Later, the perianth often differentiated into an outer whorl of sepals and an inner whorl of petals (resulting in a so-called differentiated or bipartite perianth), which is particularly representative of core eudicots (Specht and Bartlett, 2009).

The origin of the perianth is still unresolved, but anatomical and developmental observations can shed some light on it. Sepals from most angiosperms have a leaf-like appearance suggesting they have a direct bract or leaf origin. Petals likely arose multiple times during evolution (Kramer and Irish, 2000) with two possible origins: bracteopetals that evolved from bracts and andropetals that evolved from stamens. Bracteopetals are typically observed in basal angiosperms that show a continuous differentiation between bracts and petaloid organs (Ronse De Craene, 2007). In contrast andropetals appear restricted to a few clades (Ranunculales and Caryophyllales for instance) where petals have probably been lost and reinvented (Ronse De Craene, 2007; Brockington et al., 2012; Ronse De Craene and Brockington, 2013). However, for most angiosperm species, the origin of petals remains unclear and a combination of anatomical and genetic work are needed to discriminate between the two possibilities.

Genetic work on model species have provided molecular support for the key events accompanying flowering: formation of the flower meristem, specification of floral organ identities (the famous ABC model), floral organ outgrowth and maturation, and fertilization (Glover, 2014). Based on this data, molecular models for the evolution of floral structures such as the bisexual axis have been proposed (Baum and Hileman, 2007; Frohlich and Chase, 2007; Specht and Bartlett, 2009). A similar approach can be followed to generate molecular hypotheses for the origin of the perianth; more specifically to speculate how an identity domain for the perianth could have emerged from an ancestral flower containing only reproductive organs. Here we propose that cadastral mechanisms maintaining reproductive identity to the center of the flower could have supported perianth appearance during evolution. Based on genetic work in model species, we review some of the molecular players underlying these cadastral mechanisms.

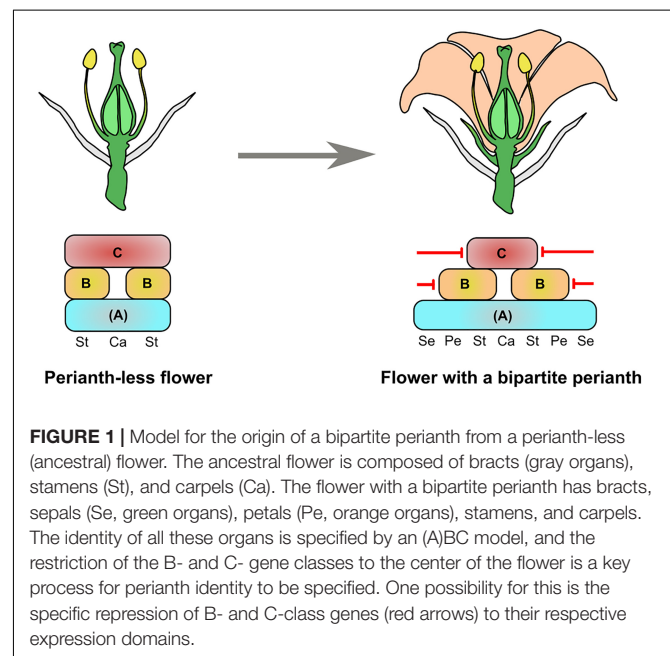
CREATING A DOMAIN FOR PERIANTH IDENTITY

Assuming that the perianth was the last angiosperm synapomorphy to appear, we have asked the following question

(**Figure 1**): how could a typical flower with 4 organ identities have been generated from a bisexual perianth-less flower with 2 organ identities?

In **Figure 1**, we use a genetic framework based on the (A)BC or FBC models proposed by Causier et al. or Baum and Hileman, respectively, where (A) or F is a floral identity function acquired at early stages of floral meristem development and necessary for all floral organ identities (Baum and Hileman, 2007; Causier et al., 2010). We chose not to use the classical ABC model because the existence of the A function is much debated (Schwarz-Sommer et al., 1990; Litt, 2007; Causier et al., 2010; Heijmans et al., 2012; Morel et al., 2017). With the (A)BC framework, floral organ identities from a typical angiosperm flower are specified by a combination of (A) expression for sepals, (A) + B for petals, (A) + B + C for stamens and (A) + C for carpels. Similarly, we can assume that the perianth-less ancestral flower had floral organ identities specified by (A) + B + C for stamens and (A) + C for carpels. In support of this, the B- and C-class functions are remarkably conserved across angiosperms, and gymnosperm male and female cones also show B + C and C gene expression, respectively (Sundström and Engström, 2002; Becker and Theissen, 2003; Zhang et al., 2004; Moyroud et al., 2017).

Therefore, the difference in gene expression between the perianth-less and bipartite perianth flower mainly resides in the peripheral expression domains of the B and C genes. This suggests that cadastral mechanisms that maintain (through repression or activation) B- and C-class gene expression to their dedicated area could have been key for perianth evolution. From reviewing the literature, it appears that several repressors of B- and C-class gene expression have been identified in extant species. Indeed, specifically repressing B genes from the first whorl and C genes from the first and second whorls is one possible way to generate a domain sufficient for sepal and petal



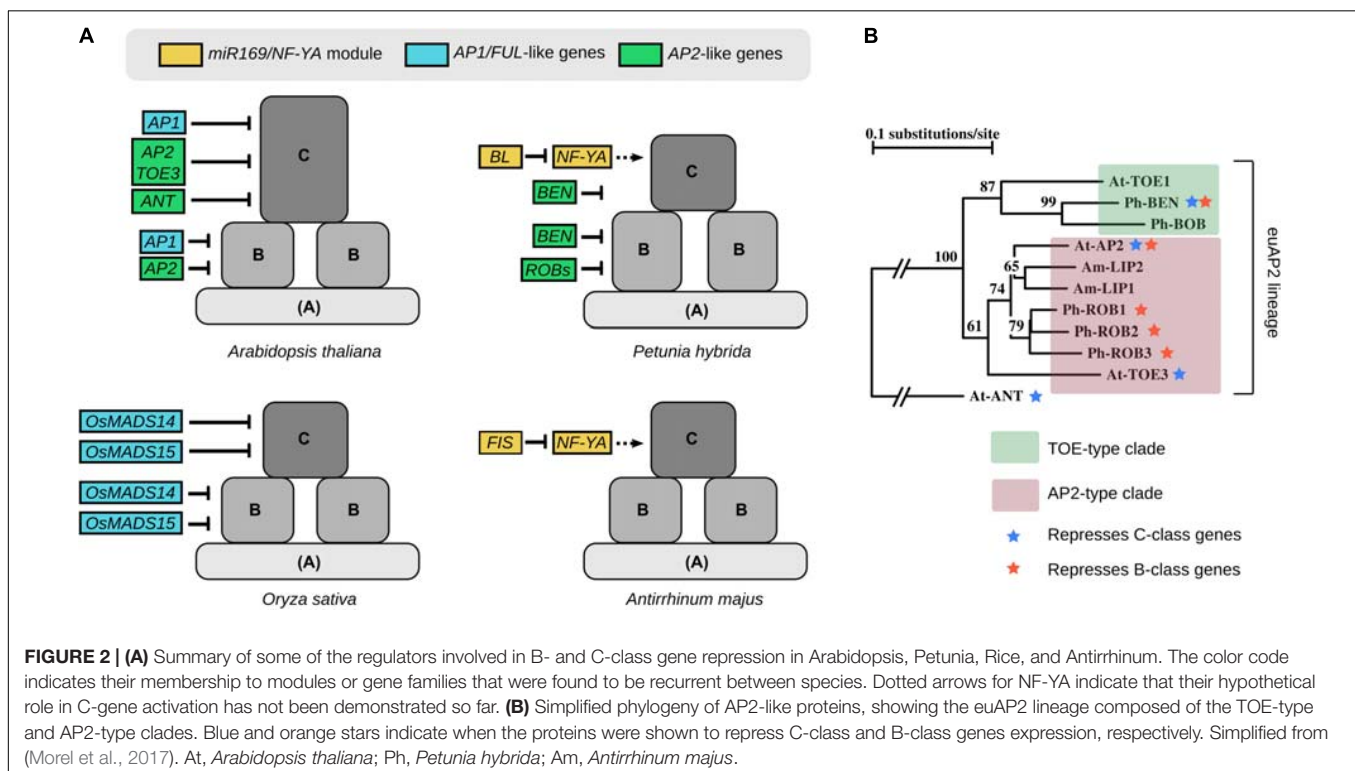
identity to be specified. In the following paragraphs we will review the repressors of B- and C-class genes and examine how conserved their function is across angiosperms (Figure 2A). This review is mostly based on functional studies in the model species *Arabidopsis thaliana* (Arabidopsis), *Petunia hybrida* (Petunia), *Oryza sativa* (Rice), and *Antirrhinum majus* (Antirrhinum).

REPRESSORS OF C-CLASS GENE EXPRESSION

A-class genes from the classical ABC model were proposed, already from the beginning, to have a dual function in specifying organ identity in the first two whorls (sepals and petals, alone or in combination with B-genes), and repressing the C function from these same whorls (Coen and Meyerowitz, 1991). In Arabidopsis, *APETALA1* (*AP1*) and *AP2* are generally classified as A-class genes, although *AP1* was added only later to this class (Bowman et al., 1991; Coen and Meyerowitz, 1991; Gustafson-Brown et al., 1994). Indeed, *AP1* does repress C-class gene expression from young flowers, by forming complexes with the flower meristem identity regulators SHORT VEGETATIVE PHASE (*SVP*) or *AGAMOUS-LIKE24* (*AGL24*) and the general floral repressors *LEUNIG* (*LUG*) and *SEUSS* (*SEU*) (Gregis et al., 2006, 2009; Sridhar et al., 2006). But examination of *ap1* in combination with other mutations revealed that *AP1* is not strictly necessary for petal and sepal identity, since these organs can develop in some *ap1* mutant backgrounds (Yu et al., 2004; Causier et al., 2010). Moreover outside of Brassicaceae, *AP1* orthologues are generally not needed for

sepal and petal identity (Litt, 2007; Causier et al., 2010). For instance in *Antirrhinum*, mutant in the *AP1* ortholog *SQUAMOSA* shows defects in floral meristem identity but not necessarily in perianth identity (Huijser et al., 1992). In contrast in Rice, mutations in the *AP1/FRUITFUL* (*FUL*) lineage members *OsMADS14* and *OsMADS15* results in the extension of C-class gene expression (and to a lesser extent, B-class gene expression) in the outer whorls of the flower, therefore leading to palea-to-carpel and lodicule-to-stamen homeotic conversions (Wu et al., 2017).

In Arabidopsis the other A-class gene *AP2* represses *AGAMOUS* (*AG*, the C-class gene) expression in whorls 1 and 2, and the *ap2* mutant shows the sepal-to-carpel and petal-to-stamen homeotic conversions expected from an A-class mutant (Drews et al., 1991) (see Figure 2B for a simplified phylogeny of *AP2*-like genes). Both the *AP2*-type gene *TARGET OF EAT 3* (*TOE3*) and the *AP2*-like gene *AINTEGUMENTA* (*ANT*) also repress *AG* expression; however, homeotic changes in the corresponding mutants are very subtle, if any (Krizek et al., 2000; Jung et al., 2014). *AP2* and *TOE3* expression is regulated at the translational level by the microRNA *miR172* (Chen, 2004; Wollmann et al., 2010). In Petunia, it was recently found that the *euAP2* clade member *BLIND ENHANCER* (*BEN*), although not the ortholog of *AP2*, also represses C-class gene expression from the first whorl (Morel et al., 2017); in maize mutations in the *AP2*-like genes *ids1* and *sid1* result in ectopic expression of the *AG*-like genes *zag1* and *zmm2* in bracts that become carpelloid (Chuck et al., 2008); in other species antagonistic expression patterns suggest a similar repressive role of *AP2*-like genes on C-class gene expression (Yang et al., 2015). In contrast, the



Antirrhinum *AP2* orthologs *LIPLESS1* (*LIP1*) and *LIP2*, and the petunia *AP2* orthologs *REPRESSOR OF B-FUNCTION 1* (*ROB1*), *ROB2*, and *ROB3* play a role in sepal and petal development but do not seem to antagonize C-class gene expression in the perianth (Keck et al., 2003; Morel et al., 2017). Overall, this shows that members of the *euAP2* lineage are often involved in C-class gene repression in the outer whorls of the flower, but this role sometimes has been swapped between members of the lineage, switching between *AP2*-type and *TOE*-type clade members (Figure 2B). These two clades predate the monocot- eudicot divergence (Kim et al., 2006), suggesting that the repression of C-class genes by members of the *euAP2* lineage might be relatively ancient.

In Arabidopsis, other C-class repressors have been identified: the SUPERMAN-like zinc finger protein RABBIT EARS (RBE) represses *AG* in whorl 2 (Krizek et al., 2006), while the bZIP transcription factor PERIANTHIA (PAN), together with SEU, represses *AG* in whorl 1 (Das et al., 2009; Wynn et al., 2014). However, mutations in these genes are not sufficient to cause homeotic changes in floral organs, showing that a certain threshold of *AG* ectopic expression is needed for homeotic conversion. In contrast, completely different C-class repressor genes have been identified in Petunia and Antirrhinum. Indeed in both species a member of the *miR169* family, *BLIND* (*BL*) in Petunia and *FISTULATA* (*FIS*) in Antirrhinum, represses C-class gene expression in the outer whorls, possibly by targeting members of the NF-YA family for degradation (Cartolano et al., 2007). Members of the *miR169*/NF-YA module from various species have been involved in several developmental processes such as flowering time, root architecture, embryogenesis, general responses to stress or interaction with pathogens (Laloum et al., 2013; Zhao et al., 2016; Zanetti et al., 2017) but apart from Petunia and Antirrhinum, never in floral patterning. This specific function of *miR169*/NF-YA might thus have evolved only in the euasterids lineage, unless in rosids it is hidden by redundancy between the multiple copies of *miR169* and NF-YA genes.

Other C-class repressors with a broader spatial action have been found, including BELLRINGER that represses *AG* expression in the Arabidopsis stem, inflorescence meristem and young flower meristem (Bao et al., 2004); CURLY LEAF that represses *AG* expression in all vegetative tissues of Arabidopsis and Brachypodium (Goodrich et al., 1997; Lomax et al., 2018); STERILE APETALA that represses *AG* expression in the outer floral whorls and in the inflorescence meristem of Arabidopsis (Byzova et al., 1999); and FILAMENTOUS FLOWER that represses *AG* expression in the outer floral whorls and in the peduncle of Arabidopsis (Chen et al., 1999). Mutations in each of these genes cause homeotic defects in Arabidopsis floral organs. The fact that these repressors are not spatially specific to the outer floral whorls does not exclude that they could have played a role in perianth evolution by being coopted for repression of *AG* in whorls 1 and whorls 2, while they already repressed *AG* expression from other tissues (True and Carroll, 2002). However, since their role has hardly been investigated in other species than Arabidopsis so far, we do not know how conserved these mechanisms are and if they could have been involved in perianth evolution.

REPRESSORS OF B-CLASS GENE EXPRESSION

In contrast to the many C-class genes repressor identified, fewer genes have been shown to repress B-class gene expression from the first whorl of the flower (Figure 2). In Arabidopsis, *AP2* represses the B-class genes *APETALA3* (*AP3*) and *PISTILLATA* (*PI*) expression in whorl 1. While this is not evident from the phenotype of single *ap2* mutants, this becomes visible when an *ap2* mutant allele is present in a heterozygous state in the *topless* (*tpl*) mutant background, resulting in a partial sepal-to-petal conversion due to ectopic *PI* and *AP3* expression in whorl 1 (Krogan et al., 2012). But by far, the clearest evidence of B-class gene derepression in whorl 1 is found in Petunia in the quadruple *ben rob1 rob2 rob3* mutant, that shows an almost perfect homeotic conversion of sepals into petals (Morel et al., 2017). As such this flower is reminiscent of the undifferentiated perianth found in many angiosperm species, such as tulip or magnolia, and likely a characteristic trait of the ancestral flower (Sauquet et al., 2017). As previously mentioned, *BEN* and *ROBs* are all members of the *euAP2* lineage (Figure 2B). The single *ben* mutant also shows some petaloid sectors in sepals, indicating that *BEN* and *ROBs* partially redundantly repress B-genes expression in whorl 1 (Morel et al., 2017). Therefore, repression of B-genes expression by *euAP2* genes appears conserved between Arabidopsis and Petunia, suggesting that this regulation might have originated prior to the rosids-asterids divergence.

APETALA1 has also been proposed to repress *PI* and *AP3* expression in Arabidopsis, when part of the repressive complex with *AGL24*, *SVP*, *LUG*, and *SEU* (Gregis et al., 2006, 2009), but whether *AP1* is directly involved in this regulation is unclear. In Rice the *osmads14 osmads15* double mutant shows some derepression of B-class gene expression in whorl 1 but this ectopic expression does not seem strong enough to alter organ identity (Wu et al., 2017). Altogether, this suggests a somehow conserved role of *AP1/FUL* genes in repressing B-class gene expression but the evidence is scarcer than for *AP2* genes.

CONSERVED AND UNIQUE REPRESSORS OF B- AND C-CLASS GENES

Our review highlights that members of the large *AP2* family, and in particular the *euAP2* lineage, might have a conserved function in repressing both B- and C-class gene expression from the outer whorls of the flower, predating the rosids-asterids divergence. Hence members from this family are possible candidates to have played a role in perianth evolution. However, if *euAP2* genes were involved in both sepal and petal evolution, it would require uncoupling of their repressive action on B- and C-class genes, since B-class genes should be repressed in the first whorl only while C-class genes should be repressed in the first two whorls. In Arabidopsis, it is unknown how *AP2* can have whorl-specific repressive action on B- and C-class genes, but it possibly resides in the interaction with different protein partners between whorls.

In *Petunia*, euAP2 proteins repress B- and C-gene expression in the first whorl only, while repression of C-class genes in the second whorl is completed by *BL*, showing how the dual repressive function has been distributed between two sets of genes in this species. More functional studies in angiosperms, and particularly in early diverging taxa, are now needed to evaluate the possibility that *euAP2* genes were involved in perianth evolution.

Our review also shows that a large variety of repressors of C- (and to a more minor extent, B-) class genes exist in extant species. One might wonder in particular why so many C-genes repressors are found. None of the identified repressors are redundant with each other since single mutants in question all show ectopic C expression. Hence instead of conferring robust repression of C-class genes expression, these numerous repressors might actually provide a multiplicity of ways for evolution to relieve C-expression in the perianth. Since the perianth is a highly evolvable structure, i.e., a flexible trait that evolved multiple times during angiosperm evolution (Baum and Whitlock, 1999; Kramer and Irish, 2000; Hileman and Irish, 2009; Geuten et al., 2011), an hypothesis is that evolution could have tinkered with these various repressors for the perianth to appear or disappear in different taxa.

Petaloid features are not exclusively found on second whorl petals but often have been transferred to sepals, bracts or even stamens. Flower morphology is remarkably flexible and while true petals may have been lost, petaloidy shifted to analogous organs that acquired the petal traits needed for recognition by pollinators. These petaloid features are sometimes correlated with ectopic B-gene expression, like in many non-grass monocots for instance (Kanno et al., 2007), but there are also many cases of petaloid structures that have little or no B-genes expression, as well as non-petaloid structures that do express B-class genes, as reviewed in (Ronse De Craene and Brockington, 2013). We can argue that not all B-class genes might have been identified in species without a sequenced genome. Still, the evolution of

petaloidy appears to be more complex than mere shifts in B-class gene expression, and the genes underlying these transfers of function from one organ to another might still remain to be identified.

CONCLUSION

In this review we proposed that repressing reproductive organ identity to the center of the flower is a possible way for perianth identity to have emerged in the periphery of the flower, and we reviewed the B- and C-class genes repressors that have been identified in model species. Whether these repressors were actually evolved in perianth evolution some 150 million years ago remains of course hypothetical, and functional experiments in early-diverging gymnosperms and angiosperms are needed to evaluate such hypotheses. By far the largest source of variation in perianth morphology in angiosperms does not lie in flower patterning, but in changes in shape, color, scent or size of the petals, as beautifully illustrated in (Byng et al., 2018). The genetic basis for these variations, some of quantitative nature like spur length in *Aquilegia* (Yant et al., 2015), others of qualitative nature like presence or absence of pigmentation in *Petunia* (Hoballah et al., 2007), has only been identified on few occasions (Moyroud and Glover, 2017). These genes are likely downstream targets of B-class regulators, but how these master developmental genes direct the establishment of all petaloid features in a simultaneous manner, and which parts of this large network have been modified during evolution to generate morphological diversity, remains a mystery as big as perianth evolution itself.

AUTHOR CONTRIBUTIONS

All authors listed have made a substantial, direct and intellectual contribution to the work, and approved it for publication.

REFERENCES

- Bao, X., Franks, R. G., Levin, J. Z., and Liu, Z. (2004). Repression of AGAMOUS by BELLRINGER in floral and inflorescence meristems. *Plant Cell* 16, 1478–1489. doi: 10.1105/tpc.021147
- Baum, D. A., and Hileman, L. C. (2007). “A developmental genetic model for the origin of the flower,” in *Annual Plant Reviews: Flowering and its Manipulation*, Vol. 20, ed. C. Ainsworth (Chichester: Blackwell Publishing Ltd), 1–27. doi: 10.1002/9780470988602.ch1
- Baum, D. A., and Whitlock, B. A. (1999). Plant development: genetic clues to petal evolution. *Curr. Biol.* 9, R525–R527. doi: 10.1016/S0960-9822(99)80327-3
- Becker, A., and Theissen, G. (2003). The major clades of MADS-box genes and their role in the development and evolution of flowering plants. *Mol. Phylogenet. Evol.* 29, 464–489. doi: 10.1016/S1055-7903(03)00207-0
- Bowman, J. L., Smyth, D. R., and Meyerowitz, E. M. (1991). Genetic interactions among floral homeotic genes of *Arabidopsis*. *Development* 112, 1–20.
- Brockington, S. F., Rudall, P. J., Frohlich, M. W., Oppenheimer, D. G., Soltis, P. S., and Soltis, D. E. (2012). ‘Living stones’ reveal alternative petal identity programs within the core eudicots. *Plant J.* 69, 193–203. doi: 10.1111/j.1365-313X.2011.04797.x
- Byng, J. W., Smets, E. F., van Vugt, R., Bidault, E., Davidson, C., Kenicer, G., et al. (2018). *Angiosperm Poster. Plant Gateway*. Available at: <http://www.plantgateway.com/poster/> [accessed April 25, 2018].
- Byzova, M. V., Franken, J., Aarts, M. G., de Almeida-Engler, J., Engler, G., Mariani, C., et al. (1999). *Arabidopsis* STERILE APETALA, a multifunctional gene regulating inflorescence, flower, and ovule development. *Genes Dev.* 13, 1002–1014. doi: 10.1101/gad.13.8.1002
- Cartolano, M., Castillo, R., Efremova, N., Kuckenberger, M., Zethof, J., Gerats, T., et al. (2007). A conserved microRNA module exerts homeotic control over *Petunia hybrida* and *Antirrhinum majus* floral organ identity. *Nat. Genet.* 39, 901–905. doi: 10.1038/ng2056
- Causier, B., Schwarz-Sommer, Z., and Davies, B. (2010). Floral organ identity: 20 years of ABCs. *Semin. Cell Dev. Biol.* 21, 73–79. doi: 10.1016/j.semcdb.2009.10.005
- Chen, Q., Atkinson, A., Otsuga, D., Christensen, T., Reynolds, L., and Drews, G. N. (1999). The *Arabidopsis* FILAMENTOUS FLOWER gene is required for flower formation. *Development* 126, 2715–2726.
- Chen, X. (2004). A MicroRNA as a translational repressor of *APETALA2* in *Arabidopsis* flower development. *Science* 303, 2022–2025. doi: 10.1126/science.1088060

- Chuck, G., Meeley, R., and Hake, S. (2008). Floral meristem initiation and meristem cell fate are regulated by the maize *AP2* genes *ids1* and *sid1*. *Development* 135, 3013–3019. doi: 10.1242/dev.024273
- Coen, E. S., and Meyerowitz, E. M. (1991). The war of the whorls: genetic interactions controlling flower development. *Nature* 353, 31–37. doi: 10.1038/353031a0
- Das, P., Ito, T., Wellmer, F., Vernoux, T., Dedieu, A., Traas, J., et al. (2009). Floral stem cell termination involves the direct regulation of *AGAMOUS* by *PERANTHIA*. *Development* 136, 1605–1611. doi: 10.1242/dev.035436
- Drews, G. N., Bowman, J. L., and Meyerowitz, E. M. (1991). Negative regulation of the Arabidopsis homeotic gene *AGAMOUS* by the *APETALA2* product. *Cell* 65, 991–1002. doi: 10.1016/0092-8674(91)90551-9
- Fenster, C. B., Armbruster, W. S., Wilson, P., Dudash, M. R., and Thomson, J. D. (2004). Pollination syndromes and floral specialization. *Annu. Rev. Ecol. Syst.* 35, 375–403. doi: 10.1146/annurev.ecolsys.34.011802.132347
- Frohlich, M. W., and Chase, M. W. (2007). After a dozen years of progress the origin of angiosperms is still a great mystery. *Nature* 450, 1184–1189. doi: 10.1038/nature06393
- Geuten, K., Viaene, T., and Irish, V. F. (2011). Robustness and evolvability in the B-system of flower development. *Ann. Bot.* 107, 1545–1556. doi: 10.1093/aob/mcr061
- Glover, B. (2014). *Understanding Flowers and Flowering*, 2nd Edn. Oxford: Oxford University Press. doi: 10.1093/acprof:oso/9780199661596.001.0001
- Goodrich, J., Puangsomlee, P., Martin, M., Long, D., Meyerowitz, E. M., and Coupland, G. (1997). A Polycomb-group gene regulates homeotic gene expression in *Arabidopsis*. *Nature* 386, 44–51. doi: 10.1038/386044a0
- Gregis, V., Sessa, A., Colombo, L., and Kater, M. M. (2006). *AGL24*, *SHORT VEGETATIVE PHASE*, and *APETALA1* redundantly control *AGAMOUS* during early stages of flower development in *Arabidopsis*. *Plant Cell* 18, 1373–1382. doi: 10.1105/tpc.106.041798
- Gregis, V., Sessa, A., Dorca-Fornell, C., and Kater, M. M. (2009). The Arabidopsis floral meristem identity genes *AP1*, *AGL24* and *SVP* directly repress class B and C floral homeotic genes. *Plant J.* 60, 626–637. doi: 10.1111/j.1365-313X.2009.03985.x
- Gustafson-Brown, C., Savidge, B., and Yanofsky, M. F. (1994). Regulation of the Arabidopsis floral homeotic gene *APETALA1*. *Cell* 76, 131–143. doi: 10.1016/0092-8674(94)90178-3
- Heijmans, K., Morel, P., and Vandenbussche, M. (2012). MADS-box genes and floral development: the dark side. *J. Exp. Bot.* 63, 5397–5404. doi: 10.1093/jxb/ers233
- Hileman, L. C., and Irish, V. F. (2009). More is better: the uses of developmental genetic data to reconstruct perianth evolution. *Am. J. Bot.* 96, 83–95. doi: 10.3732/ajb.0800066
- Hoballah, M. E., Gubit, T., Stuurman, J., Broger, L., Barone, M., Mandel, T., et al. (2007). Single gene-mediated shift in pollinator attraction in *Petunia*. *Plant Cell* 19, 779–790. doi: 10.1105/tpc.106.048694
- Huijser, P., Klein, J., Lonnig, W. E., Meijer, H., Saedler, H., and Sommer, H. (1992). Bracteomania, an inflorescence anomaly, is caused by the loss of function of the MADS-box gene *squamosa* in *Antirrhinum majus*. *EMBO J.* 11, 1239–1249. doi: 10.1002/j.1460-2075.1992.tb05168.x
- Jung, J.-H., Lee, S., Yun, J., Lee, M., and Park, C.-M. (2014). The miR172 target *TOE3* represses *AGAMOUS* expression during *Arabidopsis* floral patterning. *Plant Sci.* 21, 29–38. doi: 10.1016/j.plantsci.2013.10.010
- Kanno, A., Nakada, M., Akita, Y., and Hirai, M. (2007). Class B gene expression and the modified ABC model in nongrass monocots. *Sci. World J.* 7, 268–279. doi: 10.1100/tsw.2007.86
- Keck, E., McSteen, P., Carpenter, R., and Coen, E. (2003). Separation of genetic functions controlling organ identity in flowers. *EMBO J.* 22, 1058–1066. doi: 10.1093/emboj/cdg097
- Kim, S., Soltis, P. S., Wall, K., and Soltis, D. E. (2006). Phylogeny and domain evolution in the *APETALA2*-like gene family. *Mol. Biol. Evol.* 23, 107–120. doi: 10.1093/molbev/msj014
- Kramer, E. M., and Irish, V. F. (2000). Evolution of the petal and stamen developmental programs: evidence from comparative studies of the lower eudicots and basal angiosperms. *Int. J. Plant Sci.* 161, S29–S40. doi: 10.1086/317576
- Krizek, B. A., Lewis, M. W., and Fletcher, J. C. (2006). *RABBIT EARS* is a second-whorl repressor of *AGAMOUS* that maintains spatial boundaries in Arabidopsis flowers. *Plant J.* 45, 369–383. doi: 10.1111/j.1365-313X.2005.02633.x
- Krizek, B. A., Prost, V., and Macias, A. (2000). *AINTEGUMENTA* promotes petal identity and acts as a negative regulator of *AGAMOUS*. *Plant Cell* 12, 1357–1366. doi: 10.1105/tpc.12.8.1357
- Krogan, N. T., Hogan, K., and Long, J. A. (2012). *APETALA2* negatively regulates multiple floral organ identity genes in *Arabidopsis* by recruiting the co-repressor *TOPLESS* and the histone deacetylase *HDA19*. *Development* 139, 4180–4190. doi: 10.1242/dev.085407
- Laloum, T., De Mita, S., Gamas, P., Baudin, M., and Niebel, A. (2013). CCAAT-box binding transcription factors in plants: Y so many? *Trends Plant Sci.* 18, 157–166. doi: 10.1016/j.tplants.2012.07.004
- Litt, A. (2007). An evaluation of A-function: evidence from the *APETALA1* and *APETALA2* gene lineages. *Int. J. Plant Sci.* 168, 73–91. doi: 10.1086/509662
- Lomax, A., Woods, D. P., Dong, Y., Bouché, F., Rong, Y., Mayer, K. S., et al. (2018). An ortholog of *CURLY LEAF/ENHANCER OF ZESTE like-1* is required for proper flowering in *Brachypodium distachyon*. *Plant J.* 93, 871–882. doi: 10.1111/tj.13815
- Morel, P., Heijmans, K., Rozier, F., Zethof, J., Chamot, S., Bento, S. R., et al. (2017). Divergence of the floral A-function between an asterid and a Rosid Species. *Plant Cell* 29, 1605–1621. doi: 10.1105/tpc.17.00098
- Moyroud, E., and Glover, B. J. (2017). The evolution of diverse floral morphologies. *Curr. Biol.* 27, R941–R951. doi: 10.1016/j.cub.2017.06.053
- Moyroud, E., Monniaux, M., Thévenon, E., Dumas, R., Scutt, C. P., Frohlich, M. W., et al. (2017). A link between *LEAFY* and B-gene homologues in *Welwitschia mirabilis* sheds light on ancestral mechanisms prefiguring floral development. *New Phytol.* 216, 469–481. doi: 10.1111/nph.14483
- Regal, P. J. (1977). Ecology and evolution of flowering plant dominance. *Science* 196, 622–629. doi: 10.1126/science.196.4290.622
- Ronse De Craene, L. P., and Brockington, S. F. (2013). Origin and evolution of petals in angiosperms. *Plant Ecol. Evol.* 146, 5–25. doi: 10.5091/plecevo.2013.78
- Ronse De Craene, R. D. (2007). Are petals sterile stamens or bracts? The origin and evolution of petals in the core eudicots. *Ann. Bot.* 100, 621–630. doi: 10.1093/aob/mcm076
- Sauquet, H., and Magallón, S. (2018). Key questions and challenges in angiosperm macroevolution. *New Phytol.* 219, 1170–1187. doi: 10.1111/nph.15104
- Sauquet, H., von Balthazar, M., Magallón, S., Doyle, J. A., Endress, P. K., Bailes, E. J., et al. (2017). The ancestral flower of angiosperms and its early diversification. *Nat. Commun.* 8:16047. doi: 10.1038/ncomms16047
- Schwarz-Sommer, Z., Huijser, P., Nacken, W., Saedler, H., and Sommer, H. (1990). Genetic control of flower development by homeotic genes in *Antirrhinum majus*. *Science* 250, 931–936. doi: 10.1126/science.250.4983.931
- Scutt, C. P. (2018). “The origin of angiosperms,” in *Evolutionary Developmental Biology*, eds L. Nuno de la Rosa and G. Müller (Cham: Springer International Publishing), 1–20. doi: 10.1007/978-3-319-33038-9_60-1
- Specht, C. D., and Bartlett, M. E. (2009). Flower evolution: the origin and subsequent diversification of the angiosperm flower. *Annu. Rev. Ecol. Syst.* 40, 217–243. doi: 10.1146/annurev.ecolsys.110308.120203
- Sridhar, V. V., Surendrarao, A., and Liu, Z. (2006). *APETALA1* and *SEPALLATA3* interact with *SEUSS* to mediate transcription repression during flower development. *Development* 133, 3159–3166. doi: 10.1242/dev.02498
- Sundström, J., and Engström, P. (2002). Conifer reproductive development involves B-type MADS-box genes with distinct and different activities in male organ primordia. *Plant J.* 31, 161–169. doi: 10.1046/j.1365-313X.2002.01343.x
- The Plant List (2013). Available at: <http://www.theplantlist.org/>
- True, J. R., and Carroll, S. B. (2002). Gene co-option in physiological and morphological evolution. *Annu. Rev. Cell Dev. Biol.* 18, 53–80. doi: 10.1146/annurev.cellbio.18.020402.140619
- van Doorn, W. G., and Van Meeteren, U. (2003). Flower opening and closure: a review. *J. Exp. Bot.* 54, 1801–1812. doi: 10.1093/jxb/erg213
- Wollmann, H., Mica, E., Todesco, M., Long, J. A., and Weigel, D. (2010). On reconciling the interactions between *APETALA2*, *miR172* and *AGAMOUS* with the ABC model of flower development. *Development* 137, 3633–3642. doi: 10.1242/dev.036673
- Wu, F., Shi, X., Lin, X., Liu, Y., Chong, K., Theißen, G., et al. (2017). The ABCs of flower development: mutational analysis of *AP1/FUL*-like genes in rice

- provides evidence for a homeotic (A)-function in grasses. *Plant J.* 89, 310–324. doi: 10.1111/tpj.13386
- Wynn, A. N., Seaman, A. A., Jones, A. L., and Franks, R. G. (2014). Novel functional roles for PERIANTHIA and SEUSS during floral organ identity specification, floral meristem termination, and gynoecial development. *Front. Plant Sci.* 5:130. doi: 10.3389/fpls.2014.00130
- Yang, F. X., Zhu, G. F., Wang, Z., Liu, H. L., and Huang, D. (2015). A putative miR172-targeted *CeAPETALA2-like* gene is involved in floral patterning regulation of the orchid *Cymbidium ensifolium*. *Genet. Mol. Res.* 14, 12049–12061. doi: 10.4238/2015.October.5.18
- Yant, L., Collani, S., Puzej, J., Levy, C., and Kramer, E. M. (2015). Molecular basis for three-dimensional elaboration of the *Aquilegia* petal spur. *Proc. Biol. Sci.* 282:20142778. doi: 10.1098/rspb.2014.2778
- Yu, H., Ito, T., Wellmer, F., and Meyerowitz, E. M. (2004). Repression of AGAMOUS-LIKE 24 is a crucial step in promoting flower development. *Nat. Genet.* 36, 157–161. doi: 10.1038/ng1286
- Zanetti, M. E., Ripodas, C., and Niebel, A. (2017). Plant NF-Y transcription factors: key players in plant-microbe interactions, root development and adaptation to stress. *Biochim. Biophys. Acta* 1860, 645–654. doi: 10.1016/j.bbagr.2016.11.007
- Zhang, P., Tan, H. T. W., Pwee, K.-H., and Kumar, P. P. (2004). Conservation of class C function of floral organ development during 300 million years of evolution from gymnosperms to angiosperms. *Plant J.* 37, 566–577. doi: 10.1046/j.1365-313X.2003.01983.x
- Zhao, H., Wu, D., Kong, F., Lin, K., Zhang, H., and Li, G. (2016). The *Arabidopsis thaliana* nuclear factor Y transcription factors. *Front. Plant Sci.* 7:2045. doi: 10.3389/fpls.2016.02045

Conflict of Interest Statement: The authors declare that the research was conducted in the absence of any commercial or financial relationships that could be construed as a potential conflict of interest.

Copyright © 2018 Monniaux and Vandenbussche. This is an open-access article distributed under the terms of the Creative Commons Attribution License (CC BY). The use, distribution or reproduction in other forums is permitted, provided the original author(s) and the copyright owner(s) are credited and that the original publication in this journal is cited, in accordance with accepted academic practice. No use, distribution or reproduction is permitted which does not comply with these terms.