



HAL
open science

Rasterization strategies for airborne LiDAR classification using attribute profiles

Florent Guiotte, Sébastien Lefèvre, Thomas Corpetti

► **To cite this version:**

Florent Guiotte, Sébastien Lefèvre, Thomas Corpetti. Rasterization strategies for airborne LiDAR classification using attribute profiles. 2019 Joint Urban Remote Sensing Event (JURSE), May 2019, Vannes, France. pp.1-4, 10.1109/JURSE.2019.8808945 . hal-02343901v1

HAL Id: hal-02343901

<https://hal.science/hal-02343901v1>

Submitted on 13 Nov 2019 (v1), last revised 8 Dec 2020 (v2)

HAL is a multi-disciplinary open access archive for the deposit and dissemination of scientific research documents, whether they are published or not. The documents may come from teaching and research institutions in France or abroad, or from public or private research centers.

L'archive ouverte pluridisciplinaire **HAL**, est destinée au dépôt et à la diffusion de documents scientifiques de niveau recherche, publiés ou non, émanant des établissements d'enseignement et de recherche français ou étrangers, des laboratoires publics ou privés.

Rasterization strategies for airborne LiDAR classification using attribute profiles

Florent Guiotte
LETG-Rennes, IRISA
Univ. Rennes 2
Rennes, France
florent.guiotte@univ-rennes2.fr

Sébastien Lefèvre
IRISA
Univ. Bretagne Sud
Vannes, France
sebastien.lefevre@irisa.fr

Thomas Corpetti
LETG-Rennes
CNRS
Rennes, France
thomas.corpetti@univ-rennes2.fr

Abstract—This paper evaluates rasterization strategies and the benefit of hierarchical representations, in particular attribute profiles, to classify urban scenes issued from multispectral LiDAR acquisitions. In recent years it has been found that rasterized LiDAR provides a reliable source of information on its own or for fusion with multispectral/hyperspectral imagery. However previous works using attribute profiles on LiDAR rely on elevation data only. Our approach focuses on several LiDAR features rasterized with multilevel description to produce precise land cover maps over urban areas. Our experimental results obtained with LiDAR data from university of Houston indicate good classification results for alternative rasters and even more when multilevel image descriptions are used.

Index Terms—airborne LiDAR, land cover mapping, attribute profiles, multilevel image description

I. INTRODUCTION

Airborne LiDAR systems are a common source of acquisition for elevation data. Such systems provide accurate 3D point clouds of the scanned scenery. LiDAR is very popular over urban areas where it brings a valuable complementary source of information when used with multispectral or hyperspectral optical data in order to achieve land cover or land use mapping.

LiDAR data are voluminous, irregularly distributed point clouds coming along with intensity features and acquisition meta-data. Due to this complexity, LiDAR data for land cover mapping are often simplified to a digital elevation model (DEM) used as additional information for fusion with multispectral or hyperspectral images. In this work, we focused on providing such maps with LiDAR data only using multilevel image description. Classification of several urban classes was derived based on features from LiDAR data such as intensities, elevation and number of echoes.

In the following we review simple yet effective rasterization strategies of LiDAR data, that are subsequently used for multilevel image description with attribute profiles (APs). By doing so, we are then able to efficiently derive a precise land cover map through supervised classification.

The authors acknowledge the support of Région Bretagne (CAMLOT doctoral project).

II. RELATED WORK

A. Classification of LiDAR data

Numerous methods have already been proposed in the past decade for LiDAR point cloud classification, coming from various scientific fields such as geosciences (flow, erosion, rock deformations, ...), computer graphics (3D reconstruction) or Earth observation (detection of trees, roads, buildings, ...).

Among efficient techniques, some directly exploit the 3D point cloud structure [1], [10], [12] while in many applications the point cloud is first binned into a 2D regular grid (rasterization process) on which computer vision approaches can be applied (see e.g. [9]). Apart from some specific applications where LiDAR points are fused with other data (e.g. hyperspectral images [5]–[7], [13]), most techniques consist in computing features to describe the point clouds, before using such features to classify the scene under study. While first works have been focused on the characterization of single points (often through height and intensity) without including information related to their neighbours [9], more advanced approaches have included spatial relationships using a set of spheres or cylinders (of variable radius) around each point to extract consistent geometric features [10], [12], [15]. In this context, multiscale local 3D features (main orientation, variability around each point, ...) have proven their efficiency to classify LiDAR scenes (see e.g. [1]). Even if it is very efficient, the sphere used to assess the neighbourhood of points is isotropic (no orientation is promoted) which is not optimal since the geometry of objects is not taken into account. Therefore other multi-scale approaches have been proposed on LiDAR DEM, such as the popular attribute profiles [4] that produce a multiscale description of the pixel and his surrounding [6], [7], [13] before proceeding to the classification. The main idea behind is to compute multi-scale spatial features by taking into account the geometry of the scene. In this work, we suggest to explore various information derived from the LiDAR point cloud within the framework of attribute profiles.

B. Attributes profiles

Introduced in 2010 for remotely-sensed images, morphological APs [4] enable a multi-scale description of data driven by their spatial and spectral information. Efficient computation

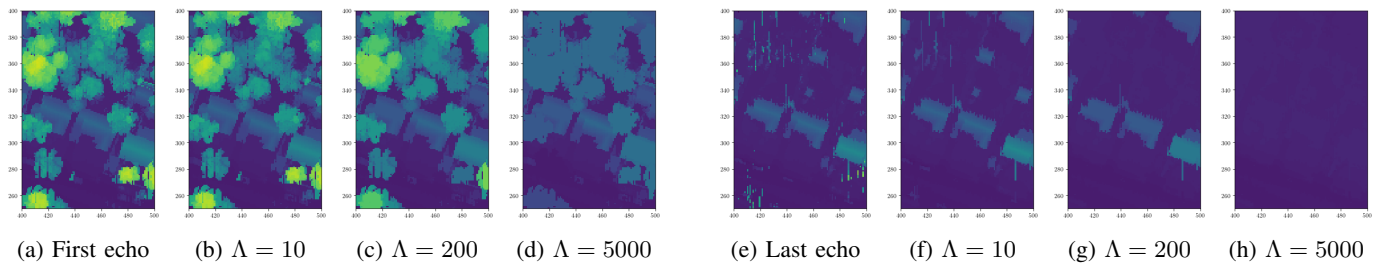


Fig. 1: Some rasters over residential area, for first echo (a-b-c-d) and last echo (e-f-g-h) with original rasters (a-e), SDAP filtering with $\Lambda = 10$ (b-f), $\Lambda = 200$ (c-g) and $\Lambda = 5000$ (d-h). One can observe the interest of the last echo (second line) since structures below vegetation are clearly highlighted.

of APs is achieved through tree-based representation of the gray level sets with either a max or a min-tree. They have then been superseded by self-dual attribute profiles (SDAPs) [3] built from a unique multi-scale representation of an image through the tree of shapes. In this tree, all nodes represent nested connected regions of similar pixels, with leaves made of the local extrema and the root gathering all pixels of the image. Then, successive filterings of the image (or equivalently the tree representation) are performed according to some predefined characteristics computed for each node such as area, moment of inertia, or standard deviation of the connected components. The filtered images are finally stacked together to form description vectors called SDAPs. The concatenation of the SDAPs from different bands in a single vector are called extended self-dual attribute profiles (ESDAPs) [2]. From the concept of SDAPs, the differential self-dual attribute profiles (DSDAPs) contains the same information but expresses the difference between successive levels of the SDAPs.

Previous works combining APs and LiDAR data only focus on DEM (cf. Sec. II-A). Yet, in recent LiDAR acquisition systems, multi-spectral information can be extracted and the question of the description of other features than DEM is open.

In this study we aim to enhance existing LiDAR classification methods using SDAPs and their derivative to better describe several features extracted from LiDAR data. Validation is performed on the IEEE DFC 2018 public dataset.

III. RASTERIZATION STRATEGIES

In this section we provide the features we extracted from LiDAR data and the multi-scale filtering we have chosen for the spatial description.

A. LiDAR features

LiDAR systems are usually exploited to provide unstructured 3D point clouds used to derive a DEM. Though a DEM brings useful information, additional features issued from LiDAR can still be exploited, in particular:

- 1) *The spectral intensity associated with the first echo in each spectral band.*
- 2) *The number of echoes in each spectral band.* Some structures, especially in vegetated areas, do not fully backscatter the laser pulse and yield in multi-echoes signals.

- 3) *The position of the last echo.* For multi-echoes backscattered signals, this enables to localize the last element encountered. In some situations (especially with vegetation), this enables to localize the ground surface.
- 4) *The associated intensities of last echo.* Analogously to the paired information of first echo position and intensities we have used the last echo spectral intensities in addition to its position.

The two last information are usually less employed. Nevertheless, they can help the classification process since all vegetated areas are removed, as illustrated by Fig. 1(e).

The rasterization process aims to provide in each cell some representative values of the aforementioned features. For the sake of simplicity, we have chosen to average the values of intensity, elevation and number of echoes contained in each cell. Furthermore, we fill potential empty cells (missing data) through linear interpolation.

B. Attribute filtering

As previously indicated, we consider here the application of attribute profiles over different rasterized versions of LiDAR data. In this paper, for the sake of performance as well as simplicity, we have chosen to filter all LiDAR features solely based on the area attribute whose values have been set in the urban context. More precisely, we consider three main scales:

- small values (1 to 5 m^2) remove small-sized objects (e.g. power lines) and can be regarded as denoising filters;
- moderate values (5 to 50 m^2) remove medium-sized objects (cars, trees, ...);
- large values (more than 50 m^2) remove larger objects (e.g. buildings) and therefore enable to automatically derive a digital terrain model (DTM).

IV. EXPERIMENTS

A. Dataset and setup

1) *Dataset:* Our method was tested on the multi-spectral LiDAR acquisition of the University of Houston issued from 2018 IEEE GRSS Data Fusion Contest dataset¹. The associated ground truth map has a spatial resolution of 0.5m.

¹cf <http://www.grss-ieee.org/community/technical-committees/data-fusion/data-fusion-contest/>

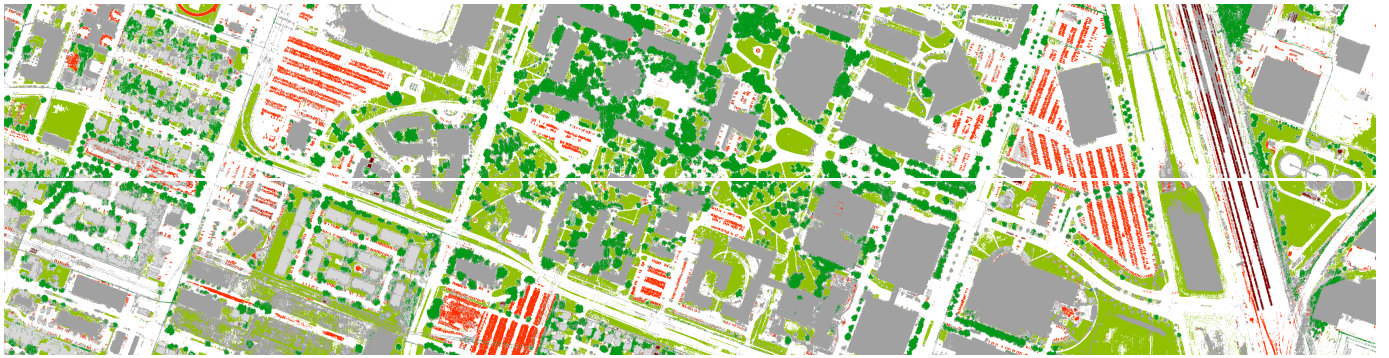


Fig. 2: Classification of the scene using DSDAPs with all features $\{N, I, I_r, D, D_r\}$.

2) *Classes*: We choose generic urban classes (roads, grass, trees, residential buildings, non-residential buildings, cars and trains) of the dataset to evaluate the overall accuracy.

3) *Classifier*: We choose random forest (RF) with 100 trees to classify our data since such a setting provides reliable results with respect both to accuracy and computational efficiency [8].

4) *Feature computation*: ESDAPs have been created by filtering each raster with area attributes. According to observations made in Sec. III-B, the attributes have been constructed using thresholds $\Lambda = \{10, 200, 5000\}$. In practice, all features mentioned in previous sections are tested independently and combined together. These features are digital surface model (DSM) (noted D), intensities (noted I), intensities of last echo (noted I_r), number of backscattered echoes (noted N) and position of the last echo (noted D_r). For the sake of comparison, we also ran the classification only with initial rasters (without multiscale analysis through APs) to evaluate the benefits of APs and variants. The ESDAPs can be formulated as:

$$ESDAP = \{SDAP(D), SDAP(I), \dots, SDAP(N)\}$$

5) *Train and test data*: Unlike most common multi-scale features that rely on spatial windows, attribute profiles rely on specific connectivity that prevents the use of random points to train and test a classifier. As a matter of fact, two pixels in various spatial areas of the image but with similar characteristics are likely to share common nodes, and hence common features. Therefore a random choice of train and test points is unfair. To cope with such a bias, one solution is to spatially split the dataset in two images where the first one is used to train the classifier and the other to test it, and conversely. In practice, we split horizontally the dataset in order to maximize the class distribution in each sub-image.

6) *Validation criteria*: From the training split, 10% of the points have been randomly selected to train and evaluate our approach. The process has been repeated 100 times and we provide averaged overall accuracy (OA) and Cohen's kappa coefficient (κ) for each experience.

B. Results

Quantitative evaluations are depicted in Tab. I. As expected and reported in previous works [5], [6], [13], SDAPs improves the classification when used with DEM D only (first line). This

observation is almost valid for all other features. Performances of DSDAPs are slightly higher than SDAPs except for DEM.

On this dataset, it is surprising to note that multi-spectral intensities (first echo I or last echo I_r) are performing better than DSM D (lines 5, 3, 1 respectively). This information is likely to be an interesting feature to separate urban elements.

It is also worth noting that regarding positions, the last echo D_r feature is more useful than first echo D (lines 1, 4) when combined with hierarchical features, with a significant improvement (about $\sim 10\%$). The ability of the last echo to assess buildings can explain such an observation.

Finally, as expected, the combination of all features (last lines) enables to achieve the best accuracy. Though the difference between DSDAPs and SDAPs is limited, the improvement with respect to the baseline is important and this demonstrates the ability of APs-based features to properly classify LiDAR data in urban environments. We can assess an improvement of $\kappa = 0.06$ while comparing pixelwise and DSDAPs description both with all features. We also can assess an improvement of $\kappa = 0.30$ while comparing SDAPs on DSM only with SDAPs on all LiDAR features.

For the sake of illustration, we provide in Fig. 2 the classification obtained using all features with DSDAPs, line 14 of Tab. I. The 7 classes are represented as follows: roads in white, grass in green, trees in dark green, residential buildings in light grey, non-residential buildings in medium grey, cars in red and trains in purple. Let us remind that in practice, the overall image has been horizontally split to avoid common features issued from APs between train and test data. Therefore, as some classes appear in few parts of the image, they have not been learned and hence, not properly classified (for instance the grassy slope at the bottom right has been classified as a building). Despite this difficulty, both quantitative evaluations and qualitative maps are interesting. The prediction map is indeed consistent as the objects exhibit few noise and proper borders. Even if some irregularities on the edges of some objects (e.g. buildings) appear, they are mainly due to the irregularity of the initial point cloud sampling.

V. CONCLUSION

In this study, we have addressed the classification of multi-spectral LiDAR using rasterized features and attribute filtering.

	Description	Pixel			SDAPs			DSDAPs		
		Evaluation metric	OA(%)	$\kappa(\times 100)$	d	OA(%)	$\kappa(\times 100)$	d	OA(%)	$\kappa(\times 100)$
1	D	64.79	46.52	1	72.67	58.80	4	69.46	54.77	4
2	N	52.30	8.43	3	52.27	10.01	12	52.74	10.64	12
3	I_r	67.82	51.06	3	70.42	54.35	12	72.54	57.84	12
4	D_r	63.91	45.12	1	73.94	59.73	4	72.76	58.29	4
5	I	68.36	52.18	3	72.00	57.30	12	73.28	59.25	12
6	$\{D, D_r\}$	69.65	54.19	2	77.22	64.85	8	77.24	65.36	8
7	$\{N, D_r\}$	68.64	52.56	4	78.88	67.44	16	78.45	67.05	16
8	$\{I, D\}$	83.97	75.64	4	86.29	78.90	16	87.39	80.71	16
9	$\{I, D_r\}$	82.26	72.84	4	86.97	79.86	16	87.93	81.46	16
10	$\{N, I, D\}$	85.99	78.64	7	87.45	80.68	28	88.69	82.69	28
11	$\{N, I, D_r\}$	84.80	76.70	7	88.29	81.91	28	88.99	83.09	28
12	$\{I, D, D_r\}$	84.59	76.50	5	88.21	81.80	20	89.28	83.56	20
13	$\{N, I, D, D_r\}$	85.87	78.46	8	88.92	82.90	32	90.04	84.74	32
14	$\{N, I, I_r, D, D_r\}$	86.20	78.93	11	89.05	83.09	44	90.16	84.91	44

TABLE I: Overall accuracy (OA) and Cohen’s Kappa coefficient (κ) using DSDAPS, SDAPs and without hierarchical representations for each feature and combination of features. The dimension of the feature vector (d) is also indicated (intensities (I, I_r) and number of echos N are taken in each of the three spectral bands).

Results showed that combination of different rasterized strategies can improve classification with the sole use of LiDAR data. In addition, considering APs to model multiscale spatial organization further improved our results to the point it allowed us to produce a precise land cover map over urban area. Furthermore, the proposed method is fast and can be used with any supervised classifier (see [11]).

Additional improvements can be designed for this method in the future. On the one hand, we can extract many more features from LiDAR such as point density, orientation within a cell, ratio between spectral bands and summarize the cell with other metrics than mean value such as standard deviation or quantiles. On the other hand, we can enhance APs by filtering more attributes such as moment of inertia, by using more advanced APs based methods such as the local feature-based attribute profiles (LFAPs) [14] or even by creating LiDAR specific attributes to be included during the construction of the tree. Regarding classification of overlapping classes (e.g. buildings beneath trees), it could also be interesting to head for 3D classification. With this in mind, 3D ground-truth would be optimal for LiDAR data.

ACKNOWLEDGMENT

The authors would like to thank the National Center for Airborne Laser Mapping and the Hyperspectral Image Analysis Laboratory at the University of Houston for acquiring and providing the data used in this study, and the IEEE GRSS Image Analysis and Data Fusion Technical Committee.

REFERENCES

- [1] Nicolas Brodu and Dimitri Lague. 3d terrestrial lidar data classification of complex natural scenes using a multi-scale dimensionality criterion: Applications in geomorphology. *ISPRS Jour. of Photogrammetry and Remote Sensing*, 68:121–134, 2012.
- [2] Gabriele Cavallaro, Mauro Dalla Mura, Jón Atli Benediktsson, and Lorenzo Bruzzone. Extended self-dual attribute profiles for the classification of hyperspectral images. *IEEE Geoscience and Remote Sensing Letters*, 12(8):1690–1694, 2015.
- [3] Mauro Dalla Mura, Jon Atli Benediktsson, and Lorenzo Bruzzone. Self-dual attribute profiles for the analysis of remote sensing images. In *International Symposium on Mathematical Morphology and Its Applications to Signal and Image Processing*, pages 320–330. Springer, 2011.
- [4] Mauro Dalla Mura, Jón Atli Benediktsson, Björn Waske, and Lorenzo Bruzzone. Morphological attribute profiles for the analysis of very high resolution images. *IEEE Transactions on Geoscience and Remote Sensing*, 48(10):3747–3762, 2010.
- [5] Bharath Bhushan Damodaran, Joachim Höhle, and Sébastien Lefèvre. Attribute Profiles on Derived Features for Urban Land Cover Classification. *Photogrammetric Engineering & Remote Sensing*, 83(3):183–193, 2017.
- [6] Pedram Ghamisi, Jon Atli Benediktsson, and Stuart Phinn. Land-cover classification using both hyperspectral and LiDAR data. *International Jour. of Image and Data Fusion*, 6(3):189–215, 2015.
- [7] Mahdi Khodadadzadeh, Jun Li, Saurabh Prasad, and Antonio Plaza. Fusion of Hyperspectral and LiDAR Remote Sensing Data Using Multiple Feature Learning. *IEEE Jour. of Selected Topics in Applied Earth Observations and Remote Sensing*, 8(6):2971–2983, 2015.
- [8] Andy Liaw, Matthew Wiener, and others. Classification and regression by randomForest. *R news*, 2(3):18–22, 2002.
- [9] Suresh K. Lodha, Edward J. Kreps, David P. Helmbold, and Darren Fitzpatrick. Aerial LiDAR Data Classification Using Support Vector Machines (SVM). In *Third International Symposium on 3D Data Processing, Visualization, and Transmission (3DPVT’06)*, pages 567–574, Chapel Hill, NC, USA, 2006. IEEE.
- [10] Clément Mallet, Frédéric Bretar, Michel Roux, Uwe Soergel, and Christian Heipke. Relevance assessment of full-waveform lidar data for urban area classification. *ISPRS Jour. of Photogrammetry and Remote Sensing*, 66(6):S71–S84, 2011.
- [11] François Merciol, Thibaud Balem, and Sébastien Lefèvre. Efficient and large-scale land cover classification using multiscale image analysis. In *ESA Conference on Big Data from Space (BiDS)*, 2017.
- [12] Joachim Niemeyer, Franz Rottensteiner, and Uwe Soergel. Contextual classification of lidar data and building object detection in urban areas. *ISPRS Jour. of Photogrammetry and Remote Sensing*, 87:152–165, 2014.
- [13] M. Pedergnana, P. R. Marpu, M. Dalla Mura, J. A. Benediktsson, and L. Bruzzone. Classification of Remote Sensing Optical and LiDAR Data Using Extended Attribute Profiles. *IEEE Jour. of Selected Topics in Signal Processing*, 6(7):856–865, 2012.
- [14] Minh-Tan Pham, Sébastien Lefèvre, and Erchan Aptoula. Local Feature-Based Attribute Profiles for Optical Remote Sensing Image Classification. *IEEE Transactions on Geoscience and Remote Sensing*, 56(2):1199–1212, 2018.
- [15] Martin Weinmann, Boris Jutzi, Stefan Hinz, and Clément Mallet. Semantic point cloud interpretation based on optimal neighborhoods, relevant features and efficient classifiers. *ISPRS Jour. of Photogrammetry and Remote Sensing*, 105:286–304, 2015.