

Supplementary material

Fig. S1. Effect of KCl on the thermal unfolding of RecA

Thermal unfolding of 2 μM RecA at various KCl concentrations, followed by monitoring the change in the CD signal at 222 nm. The concentrations of KCl are 0 mM (black), 100 mM (light blue), 200 mM (green), and 500 mM (orange).

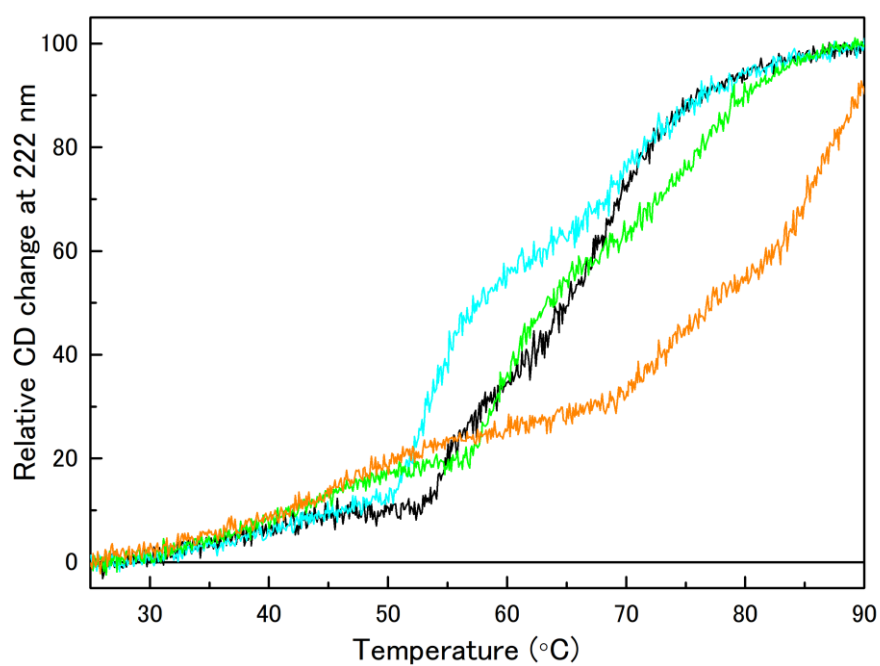


Fig. S1

Fig. S2. Effect of MgCl₂ on the thermal unfolding of RecA in the presence of ATP γ S

Thermal unfolding of 2 μ M RecA with 50 μ M ATP γ S at various MgCl₂ concentrations, followed by monitoring the change in the CD signal at 222 nm. The concentrations of MgCl₂ are 0 mM (black), 0.1 mM (purple), 2 mM (light blue), 5 mM (green), and 15 mM (red).

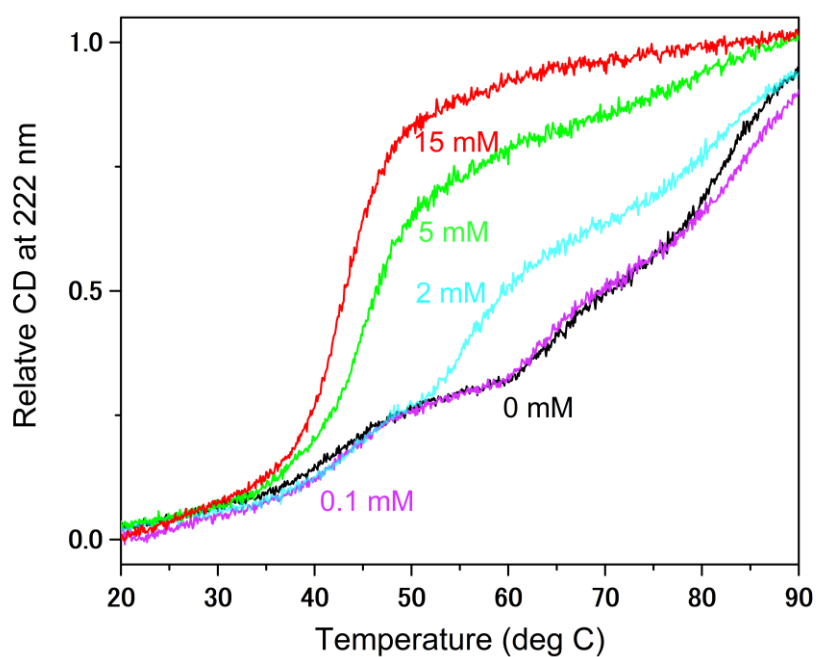


Fig S2

Fig. S3. Native mass spectrum of full-length and C-terminal tail-deleted RecA

Blue, magenta, cyan, and orange circles show ion series indicating the presence of monomeric, dimeric, trimeric, and tetrameric forms, respectively. Top: full length RecA, bottom: RecA \otimes C-tail.

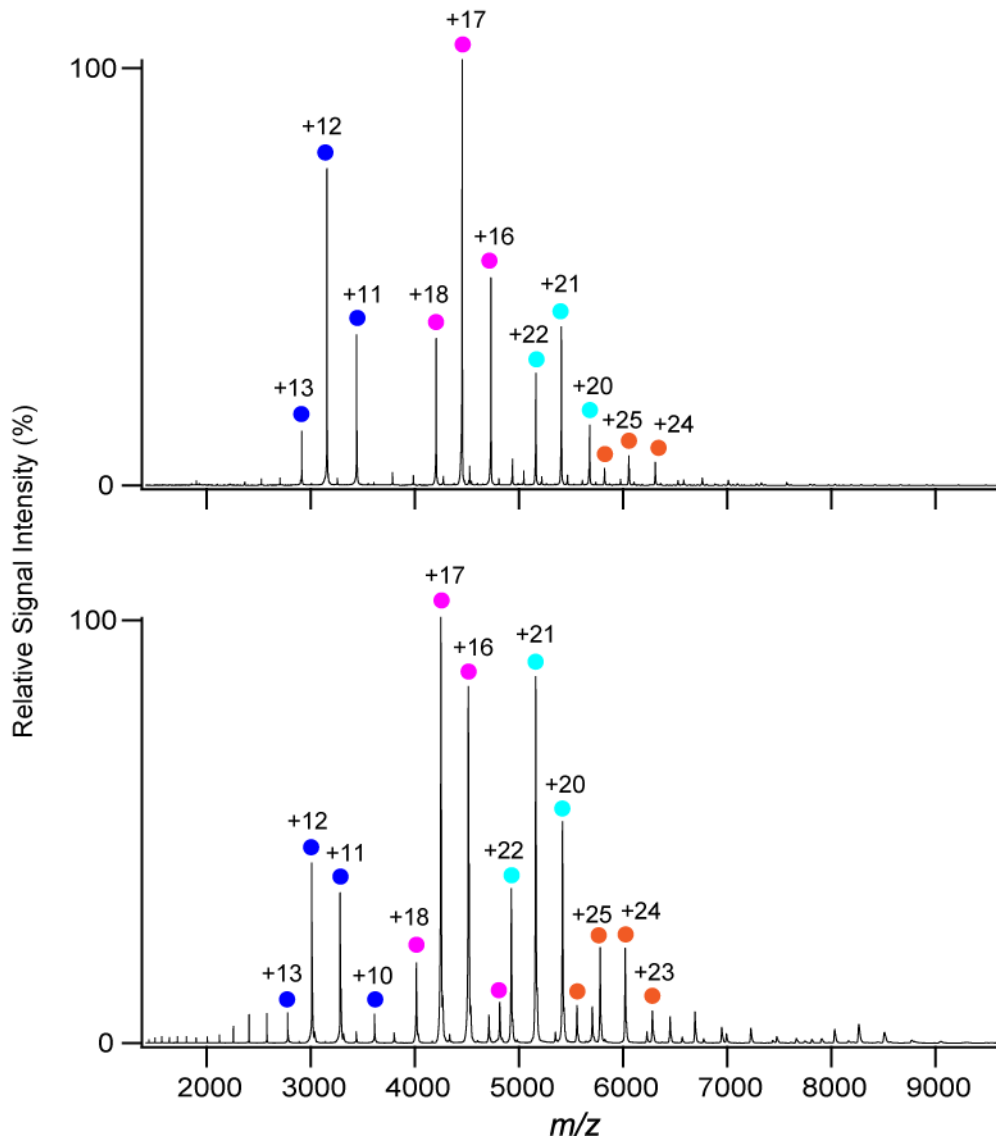


Fig. S3