



HAL
open science

Neural bases of ingroup altruistic motivation in soccer fans

Tiago Bortolini, Patrícia Bado, Sebastian Hoefle, Annerose Engel, Roland Zahn, Ricardo de Oliveira Souza, Jean-Claude Dreher, Jorge Moll

► **To cite this version:**

Tiago Bortolini, Patrícia Bado, Sebastian Hoefle, Annerose Engel, Roland Zahn, et al.. Neural bases of ingroup altruistic motivation in soccer fans. *Scientific Reports*, 2017, 7, pp.16122. 10.1038/s41598-017-15385-7. hal-02340939

HAL Id: hal-02340939

<https://hal.science/hal-02340939>

Submitted on 31 Oct 2019

HAL is a multi-disciplinary open access archive for the deposit and dissemination of scientific research documents, whether they are published or not. The documents may come from teaching and research institutions in France or abroad, or from public or private research centers.

L'archive ouverte pluridisciplinaire **HAL**, est destinée au dépôt et à la diffusion de documents scientifiques de niveau recherche, publiés ou non, émanant des établissements d'enseignement et de recherche français ou étrangers, des laboratoires publics ou privés.

SCIENTIFIC REPORTS



OPEN

Neural bases of ingroup altruistic motivation in soccer fans

Tiago Bortolini^{1,2}, Patrícia Bado^{1,2}, Sebastian Hoefle¹, Annerose Engel^{1,3,4}, Roland Zahn⁵, Ricardo de Oliveira Souza¹, Jean-Claude Dreher⁶ & Jorge Moll¹

Humans have a strong need to belong to social groups and a natural inclination to benefit ingroup members. Although the psychological mechanisms behind human prosociality have extensively been studied, the specific neural systems bridging group belongingness and altruistic motivation remain to be identified. Here, we used soccer fandom as an ecological framing of group membership to investigate the neural mechanisms underlying ingroup altruistic behaviour in male fans using event-related functional magnetic resonance. We designed an effort measure based on handgrip strength to assess the motivation to earn money (i) for oneself, (ii) for anonymous ingroup fans, or (iii) for a neutral group of anonymous non-fans. While overlapping valuation signals in the medial orbitofrontal cortex (mOFC) were observed for the three conditions, the subgenual cingulate cortex (SCC) exhibited increased functional connectivity with the mOFC as well as stronger hemodynamic responses for ingroup versus outgroup decisions. These findings indicate a key role for the SCC, a region previously implicated in altruistic decisions and group affiliation, in dovetailing altruistic motivations with neural valuation systems in real-life ingroup behaviour.

The capacity to develop strong social bonds to genetically unrelated group members may have played a central role in hominin evolution and in gene-culture coevolution^{1,2}. Group belongingness is considered a basic human need³ and behavioural research has demonstrated the human tendency to favour ingroup over outgroup members, even when groups are defined by arbitrary surface features like those created in the laboratory^{4,5}. Such important advances on the understanding of the psychological mechanisms of ingroup bias and ingroup-outgroup categorization^{5,6} have recently been bolstered by neurobiological studies^{7,8}. These lines of evidence, however, fall short of explaining the unique motivational capacity of humans to incur personal sacrifices to benefit genetically unrelated members of culturally defined groups.

Previous fMRI studies addressing the neurobiology of ingroup altruism have mainly employed arbitrary groups, based, for example, on a bogus perceptual task or personality test forming groups indicated by different colors^{9,10}. Recent studies, however, have investigated natural social identities built on long-lasting, strong ties based on daily engagement⁶ (such as ethnical groups¹¹ and university affiliation¹²), inferring participant's altruistic motivations from their behaviour in classic economic games. These studies showed increased responses in the ventral striatum (VS), a key region of the reward system¹³, for ingroup donations compared to self-rewards¹¹. In addition, higher self-reported scores on the motivational components of a group identification scale positively correlated with VS responses when comparing ingroup vs. outgroup gains¹². The VS is also activated by decisions to donate anonymously to charitable organizations^{14,15} and by stimuli representing attachment figures such as kin and romantic partners^{16,17}. Another core component of the reward system is the medial orbitofrontal cortex (mOFC)¹³. The mOFC is engaged by the subjective value of choice alternatives^{18,19}, during anticipation of rewards and at the time of rewarded outcomes^{20–23}. This region is also intimately involved in social cognition^{24,25}, and during in group categorization and pro-group behaviour^{8,26,27}.

In addition to the evidence pointing to the reward system in ingroup cooperation and social valuation^{28–30}, the subgenual (or subcallosal) cingulate cortex (SCC; BA25 and parts of BA24/32 and 33) has been more specifically

¹Cognitive and Behavioral Neuroscience Unit, D'Or Institute for Research and Education, Rio de Janeiro, Brazil.

²Graduate Program in Morphological Sciences, Federal University of Rio de Janeiro, Rio de Janeiro, Brazil. ³Clinic for Cognitive Neurology, University of Leipzig, Leipzig, Germany. ⁴Max Planck Institute for Human Cognitive and Brain Sciences, Leipzig, Germany. ⁵Institute of Psychiatry, Psychology & Neuroscience, Department of Psychological Medicine, Centre for Affective Disorders, King's College London, London, SE5 8AZ, UK. ⁶Neuroeconomics, Reward and Decision-making Team, Institut des Sciences Cognitives Marc Jeannerod, Centre National de la Recherche Scientifique, 69675, Bron, France. Jean-Claude Dreher and Jorge Moll contributed equally to this work. Correspondence and requests for materials should be addressed to J.M. (email: jorge.moll@idor.com)

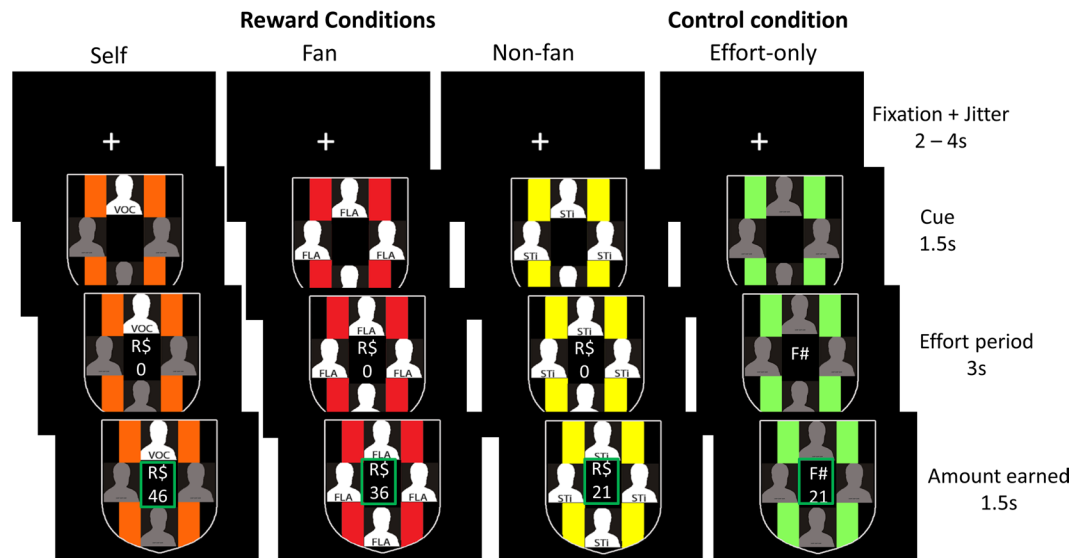


Figure 1. fMRI task design. A cue indicating trial type was presented after a fixation cross jitter period. After cue presentation, participants pressed the handgrip dynamometer (effort period for Reward and Effort-only conditions) or passively observed the cue (in Cue-only conditions, not shown here, but see Fig. S1 for detailed description of the fMRI task). Real-time feedback of the amount earned during the effort period was provided, followed by a green outline indicating the end of the trial and the amount earned. The first three columns depict the Reward conditions (Self, Fans and Non-fans). The fourth column depicts an example of an Effort-only control condition. Each Reward condition was matched to its specific Effort-only control condition. The cue for the Effort-only condition was always the same, and indicated that participants should reach the same effort as in the preceding Reward trial (as indicated by the number at the centre), but in the absence of monetary incentive. The letters on the silhouettes stands for: VOC, “*você*” (Self); FLA, “*Flamengo*” (one of the soccer teams); STI, “*Sem Time*” (Non-fans).

implicated in altruistic decisions^{14,31–33} and prosocial learning³⁴. Interestingly, the SCC was also engaged during evaluation of ingroup-related stimuli in contexts that did not involve decisions^{35–38}. The SCC receives direct hypothalamic projections from oxytocin and vasopressin-releasing neurons and is populated with OT receptors^{39–42}. These neuropeptides and their direct action in the basal forebrain are crucial for social bonding and other attachment-related behaviors^{43,44}. Taken together, these lines of evidence suggest that the SCC may be an important neural component for enabling culturally-defined ingroup attachment and behaviour^{37,43–45}.

Attachment to cultural groups is a human universal that is powerfully manifested in social mass phenomena, such as in soccer fandom, even in the absence of kinship and moral values. Soccer fans fulfil the criteria for a “natural group”⁴⁶, showing strong group attachment in real-life settings that often translate into costly behaviours—from buying expensive tickets and going to away matches to engaging in street brawls^{47–50}. Soccer rooting therefore provides a unique instance of culturally defined ingroup belongingness. Yet, the neural underpinnings of altruistic motivation toward culturally defined groups in more naturalistic and meaningful settings remain to be further characterized.

Here, we frame soccer fandom as a naturalistic model of group membership to investigate the neural mechanisms underlying ingroup attachment and altruistic motivation, which entails the ultimate goal of increasing a third party’s welfare⁵¹. To this aim, we carried out an event-related fMRI experiment on highly identified male soccer fans ($N = 27$) with a novel behavioural measure tapping on the motivation to earn money in three main reward conditions: (i) earning for oneself (self-reward, or “Self”, condition); (ii) earning for other fans of their own soccer team (“Fans” condition); and (iii) earning for “neutral” participants, that is, participants who are not supporters of soccer clubs (“Non-fans” condition). The monetary rewards were associated with the amount of physical effort participants applied to an electronic handgrip dynamometer (Fig. 1; see also Fig. S1 for a detailed depiction of the fMRI task). Considering motivation as the “*process which facilitates overcoming the cost of an effortful action to achieve the desired outcome*”⁵², this paradigm provided a measure of participants’ actual motivation at the time of the decision to spend physical effort for earning money in all experimental conditions (rather than simply requiring psychological decisions that resulted in a future monetary outcome). The Self, Fans, and Non-fans conditions, respectively, enabled us to assess motivations associated with self-gains, ingroup altruism and outgroup altruism⁵³ by way of physical work. Additional conditions (detailed below) provided tight controls for physical effort, task cues and associated reward expectancy.

We hypothesized that motivation to obtain rewards for oneself and for fellow fans would engage brain regions associated with valuation (especially the medial orbitofrontal cortex [mOFC] and the ventral striatum [VS]) more than rewards for non-fans^{13,20,54,55}. We expected that motivation to make an effort to benefit fellow fans compared to non-fans (while controlling for the effects of effort *per se*) would elicit increased coupling between the mOFC,

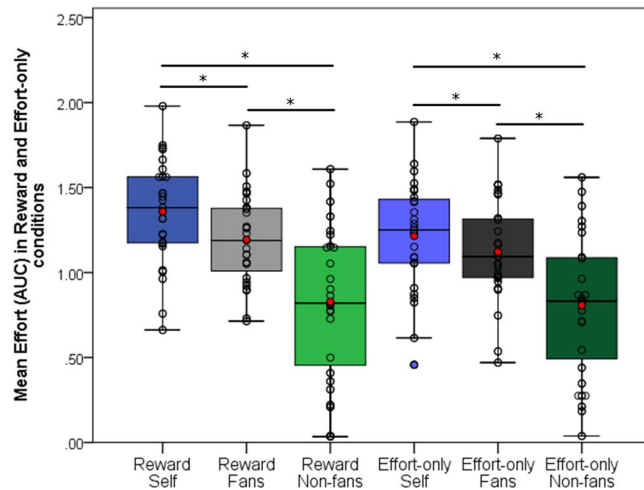


Figure 2. Behavioural results. Box-plots and data points ($N = 28$) of mean effort (AUC: area under the curve) applied in each task (Reward and Effort-only) and the three conditions (calibrated according to each participant's maximum grip force) showing that there were significant differences in effort between all three Reward conditions ($*p < 0.001$). Red dots represent the mean in each condition.

a key region to valuation processes^{20,23,55}, and the SCC, a region that has been specifically implicated in altruistic^{28,35–38} and affiliative behaviours^{16,35,37,38,56}. We additionally predicted that the SCC would be more strongly engaged by altruistic motivation to benefit ingroup fans compared to non-fans.

Results

Behavioural results. A two-way repeated measures ANOVA was conducted to compare the main effects of Monetary Incentive (Reward, Effort-only) and Group (Self, Fans, Non-fans) and its interaction on the effort applied to the handgrip. The interaction effect between Monetary Incentive and Group was significant [$F(2,52) = 6.98, p = 0.002, \text{partial } \eta^2 = 0.21$]. Analysis of 95% confidence intervals showed that there were no overall statistical differences between Reward and Effort-only conditions, indicating that the amount of effort employed in the Effort-only conditions did not statistically differ from their respective Reward conditions (Fig. 2). This is consistent with our instruction requiring participants to put the same effort on Effort-only trials as they did in the Reward trials. In contrast, paired samples t -tests found significant differences between all Reward conditions (α set at 0.016, two-tailed, Bonferroni adjustment for family-wise error [FWE]). Participants made more effort to obtain money for themselves ($M = 1.36, 95\% \text{ CI } [1.23, 1.48]$) compared to Fans ($M = 1.19, 95\% \text{ CI } [1.08, 1.30]$, $t(26) = 3.38, p = 0.002$) and Non-fans ($M = 0.86, 95\% \text{ CI } [0.65, 1.01]$, $t(26) = 6.82, p < 0.001$), and invested more effort to benefit fans than non-fans ($t(26), p < 0.001$) (Fig. 2). Spearman Rho correlations indicated no significant correlations between group alignment self-report mean scores and mean effort on the task (all p 's > 0.09).

Common effects of Self-concerned and Altruistic Reward conditions. One sample t -tests were performed for each Reward condition compared to their respective Effort-only condition (Tables S1–S3 and Figs. S2–S4). To check the overlap between the clusters that survived FWE cluster correction among these contrasts, the thresholded t -maps were subjected to a conjunction analysis (logical AND between thresholded maps⁵⁷) (see Methods). All three contrasts displayed common brain activation in the mOFC, the precuneus and the posterior cingulate cortex (PCC) (Fig. 3a). A repeated measures ANOVA of the parameter estimates extracted from the overlapped mOFC cluster of each Reward $>$ Effort-only contrast indicated no pairwise statistical difference between the contrasts (Fig. 3b).

Functional connectivity analysis (FC). Based on the role of the mOFC in valuation and decision making^{23,55}, we investigated whether mOFC valuation signals were specifically coupled with SCC activity during ingroup altruistic behaviour. A seed-to-voxel FC analysis using beta-series correlations (BSC) was employed for this purpose. BSC FC is considered to be more appropriate for event-related designs than conventional psychophysiological interaction methods⁵⁸ (see Methods). The seed mOFC ROI was based on the overlap among the three Reward $>$ Effort-only contrasts (Fig. 4a). The contrast Fans $>$ Non-fans showed higher connectivity of mOFC with our *a priori* SCC ROI ($p < 0.05$, FWE-corrected SVC; $Z = 3.41$; local maxima $[0; 26; -7]$; Fig. 4a). A control mOFC-SCC FC analysis comparing Effort-only Fans $>$ Effort-only Non-Fans showed no significant differences, indicating that the increased connectivity in the Fans $>$ Non-Fans contrast could not be attributed to different levels of effort.

Differential effects for Self and Altruistic Reward conditions. To search for specific brain responses to each Reward condition controlling for the effort *per se* paired t -tests using the first level contrasts images of each Reward versus Effort-only conditions were performed (e.g. [Fans – Effort-only] – [Non-fans – Effort-only]; see Methods). In line with our *a priori* hypotheses, analysis using small volume correction (SVC) over *a priori* ROIs^{14,35,37} revealed that making effort for Self vs. effort for Non-fans led to increased responses in the VS and

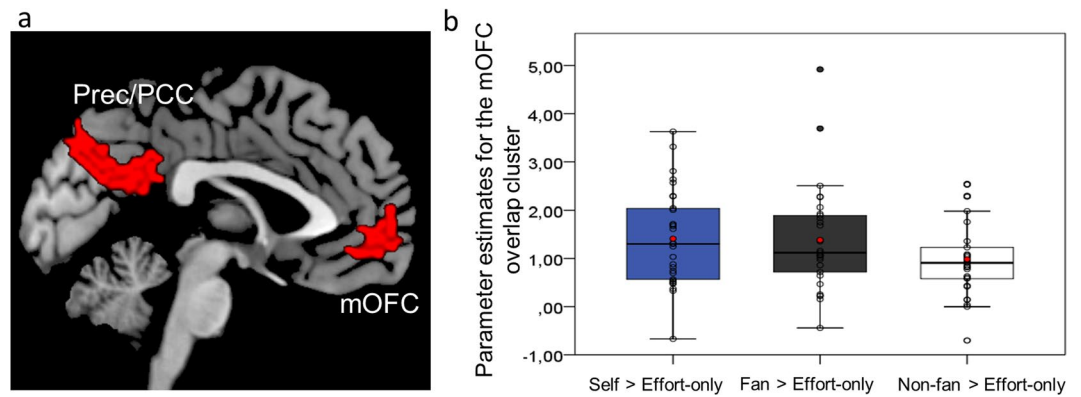


Figure 3. Common effects of Self-concerned and Altruistic Reward conditions. (a) Conjunction analysis of common effects, i.e. graphical overlap of thresholded statistical maps (voxel level, $p < 0.001$; cluster-corrected FWE, $p < 0.05$ at the whole brain level) of Reward versus Effort-only conditions showing clusters encompassing the medial orbitofrontal cortex (mOFC) and the precuneus/posterior cingulate cortex (Prec/PCC, which was not *a priori*-defined). (b) Box-plots and data points ($N = 27$) of parameter estimates for each Reward > Effort-only contrast of the medial orbitofrontal cortex (mOFC) cluster. Red dots represent the mean parameter estimates in each contrast.

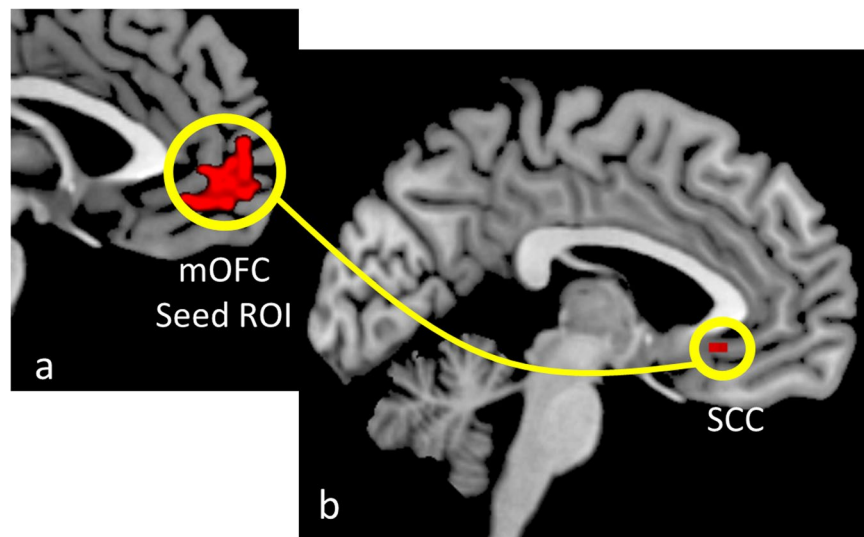


Figure 4. Connectivity between mOFC and SCC. (a) Medial orbitofrontal cortex (mOFC) cluster shown in Fig. 3a was employed as seed ROI. (b) Paired t -test of Fans > Non-fans Z-transformed correlation maps from seed ROI showing increased functional connectivity between the mOFC and the subgenual cingulate cortex (SCC). Whole-brain image in (b) is displayed at an uncorrected threshold of $p = 0.005$ ($k = 5$ voxels) for visualization purposes.

mOFC, but not in the SCC (Table 1 and Fig. 5a). Contrasting Fans to Non-fans showed higher activation in the SCC (Table 1 and Fig. 5b), but not in the VS or mOFC. However, the SCC cluster did not survive Bonferroni alpha level adjustment ($p < 0.016$) for the number of ROIs tested. As expected, the remaining contrasts (Self > Fans, Fans > Self, Non-fans > Fans and Non-fans > Self) revealed no significant activations in *a priori* ROIs at the reported statistical levels. Whole-brain results ($p < 0.001$ uncorrected voxel-level, cluster FWE corrected) are also reported in Table 1. A supporting analysis controlling for the effects of the cues was conducted to exclude the possibility that cue type could have influenced the main results reported above. No cluster survived in any *a priori* ROIs even at a lenient threshold of $p > 0.05$ (uncorrected; voxel level) when contrasting Cue-only conditions against each other.

Discussion

Here we examined fMRI responses of soccer fans during self-concerned, ingroup altruistic and outgroup altruistic decisions in the context of soccer team belongingness. We employed handgrip effort to tap on altruistic motivations⁵² to benefit ingroup and a neutral group in a non-competitive altruistic context. Our design also included

Region	k	Z	p_c	x	y	z
(Self - Effort-only) > (Non-fan - Effort-only)						
Precentral Gyrus*	87	5.60	<0.01	-45	-13	41
Left Accumbens [†]	46	3.63	<0.01	-12	11	-7
Medial orbitofrontal cortex [‡]	11	2.88	0.04	-9	38	-10
(Self - Effort-only) > (Fan - Effort-only)						
Lateral Occipital Cortex inferior division*	44	4.90	<0.01	48	-73	-1
(Fan - Effort-only) > (Self - Effort-only)						
Cuneal Cortex*	127	5.50	<0.01	0	-85	26
Lingual Gyrus*	127	4.40	<0.01	0	-88	-4
(Fan - Effort-only) > (Non-fan - Effort-only)						
Insular Cortex*	68	6.05	<0.01	36	-4	8
Subgenual cingulate cortex [§]	9	3.02	0.05	6	23	2

Table 1. Whole-brain and small volume correction clusters of differential effects of each Reward condition controlling for the effort. *Note.* Clusters survived either whole-brain ($p < 0.001$ uncorrected voxel-level, cluster FWE corrected) (*) or small volume correction over an *a priori* anatomical ROI, corrected for the number of ROIs ([†]). Regions surviving small volume correction over anatomical ROIs but which did not survive Bonferroni correction for the three *a priori* ROIs are also listed ([‡]). *A priori* ROIs coordinates: SCC [0, 26, -5]^{14,101}; mOFC [-2, 40, -4]²⁷; and VS [12/-12, 10, -6]²⁸. k = cluster extent; p_c = p-value cluster level FWE; x , y , z = MNI coordinates.

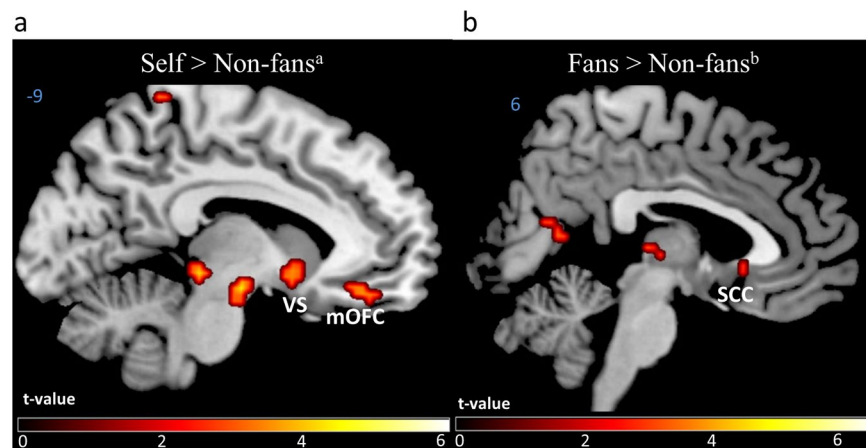


Figure 5. Differential brain responses for each Reward conditions controlling for the Effort-only conditions. (a) Increased BOLD signal in the right and left ventral striatum (VS) and the medial orbitofrontal cortex (mOFC; SVC FWE-corrected, $p < 0.05$, cluster level) for Self vs. Non-fans contrast (controlling for Effort-only). (b) Increased BOLD signal in subgenual cingulate cortex (SCC) spreading to the caudate nucleus (SVC FWE-corrected, $p < 0.05$) for Fans vs. Non-fans contrast (controlling for Effort-only). Statistical maps are displayed at uncorrected $p = 0.005$, $k = 5$ voxels, for visualization purposes. ^a[Self - Effort-only] - [Non-fans - Effort-only]; ^b[Fans - Effort-only] - [Non-fans - Effort-only].

an Effort-only condition not associated with monetary rewards. Some previous fMRI studies that specifically investigated ingroup altruism have employed arbitrary groups^{9,10}. Such groups, however, have low social meaning. Such meaning is a central ingredient of group belongingness typical of real-life social contexts⁵⁹, and is robustly present in soccer fandom across the world, especially in Brazil. Apart from anecdotal cases, such as Brazilian fans selling their own furniture and house appliances to attend an away match in another continent⁶⁰, another striking example of the relevance and the meaning of soccer fandom to highly identified fans is the increased heart attacks reported in locations hosting important games⁶¹⁻⁶⁴. In addition to the research focusing on minimal groups, studies focusing on natural groups^{11,12} have used classical economic paradigms, which lack a direct measure of prosocial motivation at the moment of the decision⁶⁵⁻⁶⁸. The study by Hackel *et al.* (2017), for instance, focused mainly on a passive task in which students witnessed monetary gains of two confederates who they believed were ingroups or outgroups.

Thus, previous studies have not provided direct evidence for the neural basis of altruistic motivation toward culturally defined, highly meaningful, anonymous ingroup members. Together, our main results demonstrated that (1) the mOFC, a key hub for valuation mechanisms, shows responses to motivation contingent on both self-concerned and other (vicarious) reward outcomes; (2) the mOFC had a stronger functional connectivity with the SCC in the Fans as compared to the Non-fans condition; (3) the SCC was more responsive in the Fans vs.

Non-fans condition, whereas the VS and mOFC were more engaged by Self vs. Non-fans; and (4) these responses were not contingent on cue-related effects or on effort *per se*.

The mOFC was recruited in all Reward vs. Effort-only contrasts. This common effect across self-concerned and altruistic Reward conditions corroborates the evidence on the key role of this region in social cognition²⁴ and in overall value computation, especially when costs are tied to outcomes^{20–23}. Moreover, there was no statistical difference in the parameter estimates in the mOFC cluster among the three main Reward conditions, while controlling for Effort-only. This confirms a recent meta-analysis suggesting that mOFC responses are “person invariant”, non-selectively tracking different reward modalities (i.e., food, monetary, social) and the recipient of rewards (self or other)⁶⁹. In addition to the mOFC, the overlap among all Reward conditions included another large cluster encompassing the precuneus and PCC. Although we have not predicted this effect, previous studies have implicated these midline parietal areas in ingroup bias^{9,10} and in other social cognition mechanisms of interpersonal psychological inferences⁷⁰.

The SCC showed increased functional connectivity with the mOFC during ingroup trials in comparison to a neutral group, as shown by beta-series correlations analysis. As discussed before, the mOFC is closely implicated in valuation mechanisms, whereas the SCC has been implicated in group affiliation, prosocial emotions and altruistic decisions^{14,20,23,32,69}. This increased mOFC-SCC functional connectivity was only observed when comparing Fans vs. Non-fans conditions. The fact that this effect could not be explained by physical effort *per se* and the lack of increased functional connectivity in the Self vs. Non-fans comparison indicates that the coupling of these regions may be specific for encoding altruistic motivation toward ingroups.

The SCC was most strongly engaged by ingroup altruistic effort compared to non-ingroup altruistic effort. However, this effect did not survive strict Bonferroni alpha adjustment over the three ROIs, and thus should be interpreted with caution. Our results expand previous findings by showing that the SCC is engaged in altruistic behaviour toward a highly meaningful group in comparison to a “neutral” group. It is worthy of note that although both conditions involved altruistic decisions leading to social rewards, they differed considerably in terms of group belongingness. Furthermore, effects in the left mid-insular cortex, which was not an *a priori* ROI, survived whole-brain analysis FWE cluster correction for the interaction contrast of Fans vs. Non-fans (see Fig. S6). This area has been consistently implicated in certain kinds of emotional experience, particularly in empathic distress^{71–74}. The robust insular responses observed in our study suggest that it may also play a role in altruistic ingroup decisions. As expected, we found increased activity in the VS for the interaction contrast [Self – Effort-only] – [Non-fans – Effort-only], compatible with a hedonic response. Although previous studies have shown ingroup-related VS activation^{11,12}, responses in the VS for the interaction [Fans – Effort-only] – [Non-fans – Effort-only] did not reach significance in our study (Fig. S5).

The increased mOFC-SCC functional connectivity and the differential activity of the SCC in association with prosocial behaviour directed to an ingroup compared to a neutral group provides new insights on the possible neural mechanisms underlying group belongingness. Considering the role of the mOFC for valuation of different outcomes and rewards^{20,23,75} and the evidence implicating the SCC in altruistic and affiliative behaviour^{14,32,37,38}, it could be speculated that functional coupling between these regions may be important for integrating general valuation and hedonic mechanisms with affiliative behaviour in the context of meaningful social groups.

Although our focus was on Brazilian male soccer fans, we believe that our study has broader implications in the identification of the neural bases of ingroup altruistic motivation. Indeed, our effort manipulations to earn money allowed us to measure actual motivation. Moreover, the Self, Fans and Non-fans conditions enabled us to assess motivations associated with self-gains, ingroup altruism and outgroup altruism in a naturalistic situation (real affiliation with soccer team) *via* physical work.

Our task differs in important ways from those employed in previous studies involving intergroup and dyadic interactions. Decisions and associated physical effort were made to benefit a group of individuals or oneself, but not a specific ingroup or outgroup member. As mentioned before, recent studies addressing ingroup cooperation in natural groups focused either on the differences of prosocial decisions involving the self and specific other ingroup or outgroup members using a classic economic game^{11,12}, or more specifically on empathy toward ingroups or outgroups^{76,77}. Our design, however, focused on levels of prosociality and did not entail “ingroup-outgroup” conflict, as it would be the case if rival soccer clubs were employed. Although soccer also represents a good model for the study of parochial altruism—the human disposition toward costly ingroup prosocial behaviour and outgroup hostility^{78–81}, our study focused on the altruistic motivations outside of competitive settings and outgroup hostility. It is also important to note that our paradigm did not rely on dyadic interactions (i.e., no faces or individual identities were used). Because our study was focused on group processes and in order to avoid excessive multiple comparisons, we have refrained from using measures that are typically employed in dyadic relations. Nonetheless, we cannot completely rule out the influence of individual traits relevant for altruistic motivation (such as empathy dimensions) on inter-subject variability⁵¹.

Our study employed an Effort-only condition to control for the effects of effort itself, allowing us to explore the motivational differences between the Reward conditions. This helps explain the lack of anterior cingulate cortex (ACC) responses, despite its consistent involvement in anticipated effort^{82–86}.

We focused on highly identified fans to enhance affiliative, group-related responses. Consequently, there was little variation in psychometric measures of group belongingness, which is a possible explanation for the absence of statistical relationships between these scores and the effort measure, in addition to the low power due to the limited sample of the fMRI study. Further studies are needed to investigate the full spectrum of group belongingness, from loose to strong ties, its relationship to ingroup altruistic motivations and its neural basis. Moreover, considering the behavioural evidence indicating differences between males and females regarding ingroup behaviour, it will be interesting to explore whether these results would hold in a female sample^{87–89}.

In summary, the SCC displayed increased connectivity with the mOFC in Fans vs. Non-fans condition indicating that even though overall valuation-related responses in the mOFC shared similarities among all three

Reward conditions, the SCC was specifically engaged when altruistic motivations involved a highly relevant social group. The differential activity pattern of the mOFC, VS and SCC in Self, Fans and Non-fans conditions help illuminate the crossroads of the neurobiology of human altruistic motivation and ingroup belongingness.

Methods

Participants. The experiment was completed by 30 right-handed male volunteers ($M_{\text{age}} = 28.79$ years, $SEM = 1.41$; $M_{\text{education}} = 15.20$ years, $SEM = 3.77$) after providing written informed consent. They were recruited through social media and personal contacts. Participants should support one of the four most popular soccer teams in Rio de Janeiro (Botafogo, Flamengo, Fluminense or Vasco da Gama) and fit common inclusion criteria for fMRI research. All participants reported no history of psychiatric and/or neurological diseases, nor were taking any type of psychotropic medication. Data were acquired only with males for convenience reasons and because of unresolved gender differences regarding ingroup behaviour^{87–89}.

One participant was excluded from fMRI analysis due to head movement ($>3\text{mm}$) and two others due to disbelief on the experimental paradigm (accessed afterwards during debriefing). Thus, the behavioural analysis included 28 participants (since one of the discarded participants was only due to movement in the MRI scanner) and the fMRI analysis 27 participants. The study was approved by the Research Ethics Committee board of the D'Or Institute (CEP 727.851) and all experiments were performed in accordance with relevant guidelines and regulations. A gift card on the average amount of money earned in the task described below was given to each participant (around R\$40). None of the subjects have previously participated in an fMRI or economic experiment.

Psychometric measures. In order to ensure that our fMRI sample represented fans with high team identification, a separate online pilot study ($N = 401$; $M_{\text{age}} = 30.37$; $SD = 9.95$; 52.4% females) was conducted to acquire normative scores for group alignment measures (see *SI text* for detailed description of each measure). Participants group belongingness was assessed with the following instruments: (1) the Brazilian version of the Football Supporter Team Identification Scale⁹⁰ (e.g. “I strongly identify with the fans of my soccer team”); (2) an entitativity measure, which assess how much one perceives a given social group as an entity (e.g. “My soccer team fans have many characteristics in common”⁹¹); and (3) a psychological kinship measure⁹², which is the extent to which an individual perceives other group members as family (e.g. “Fans of my soccer team are like family to me”). Detailed descriptions of psychometric measures are provided in *SI text*.

fMRI participants group alignment measures. Participants showing high identification with one of the most popular soccer teams in Rio de Janeiro, Brazil, were recruited for the fMRI study. These participants ($N = 28$; $M_{\text{age}} = 28$; $SD = 6.89$) scored higher in all alignment measures in comparison to the pilot study sample: *team identification* ($M_{\text{pilot}} = 2.78 \pm 1.50$ vs. $M_{\text{fMRI}} = 5.76 \pm 0.95$; $t(429) = 10.71$, $p < 0.001$), *psychological kinship* ($M_{\text{pilot}} = 1.60 \pm 1.01$ vs. $M_{\text{fMRI}} = 3.63 \pm 1.54$; $t(429) = 10.17$; $p < 0.001$), and *entitativity*, ($M_{\text{pilot}} = 4.45 \pm 1.64$ vs. $M_{\text{fMRI}} = 5.92 \pm 1.47$, $t(429) = 4.76$; $p < 0.001$). Participants reported that they felt “neutral” toward non-fans ($M = 3.55 \pm 1.05$, on a 7-point Likert scale ranging from 1 [“I see them as rivals”] to 7 [“I see them as fellow ingroups”]), 4 being “Indifferent”) and they were less identified⁹³ with non-fans ($M = 2.79 \pm 1.69$) than with fans ($M = 5.79 \pm 1.11$; $t(28) = 8.55$; $p < 0.001$). Participants filled in these measures online, between 2 and 3 days before the scanning session, to ensure recruitment of highly identified fans only.

Task and experimental design. In an event-related fMRI design, by pressing a dynamometer inside the scanner, participants could earn money for different individuals: themselves (Self condition), anonymous participants that supported the same soccer team (Fans condition) and anonymous participants that did not support any soccer team (Non-fans condition). Therefore, there were three main conditions varying the beneficiary of the effort put in the task. Importantly, the participants were instructed that the money earned would go to a pool of individuals (fans or non-fans) and after the completion of the experiment someone from the respective pool would be drawn to receive the mean amount earned *per* condition. Only in the Self condition participants were rewarded directly. The amount of effort made on each trial determined how much money was accumulated in each condition; these were called ‘Reward conditions’. Moreover, there were two control conditions: ‘Cue-only’ and ‘Effort-only’ conditions. In the former, participants only saw the cue representing each Reward condition, which were not followed by effort or monetary outcomes. In the latter, participants were asked to press the dynamometer as in the trial before, but without any monetary reward for self or others. In this case, participants were explicitly instructed that we were only interested in the effects of motor effort on brain activity. Therefore, these control conditions were treated as high-level baselines. Finally, to reinforce ingroup feelings, 15 movie clips of soccer fans of participants club were displayed pseudo-randomly interspersed across the experiment, as well as 15 movie clips of a ‘neutral’ group of fans in a similar context (i.e., a group of fans from a small team which the participants did not perceive as rivals). Because our experimental design focused on the altruistic motivation towards fellow fans as compared to a neutral group, the clips merely acted as an overall engagement strategy, and were therefore not further analysed. An LCD display mounted in the scanner room, which was seen by the participant by way of a mirror system adapted to the head coil, was used for stimulus delivery.

A dynamometer calibration phase before fMRI experiment was used in order to standardize the device for each participant maximum force. The calibration phase was presented as an ‘incentive task’ prior the experimental task, in which participants could earn an extra amount of money (R\$50) on top of the mean accumulated in the experiment if they reached the number 50 presented in a screen. Based on pilot studies ($N = 21$), to win the extra money, participants would have to reach 40 kg in one of three trials, which was an extremely hard task. No participant earned the extra money and all reported that the incentive task had no influence on their performance and decisions on the experimental task. Participants’ maximum force was calculated as the mean force of the

three trials during calibration. A more reliable approximation of participant's actual maximum force was achieved by this calibration of maximum force involving a true reward.

Each trial of the experimental task consisted of a fixation cross presented for an average of 3000 ms (jittered; range = 2000–4000 ms with 250 ms increments), followed by a cue presented for 1500 ms indicating to which pool the money would be converted to or indicating an effort only condition (Fig. 1). For Reward conditions (Self, Fans and Non-fans), a 'R\$' symbol was presented after the cue, followed by the number '0' (zero); for the Effort-only conditions, 'F#' symbol was presented, followed by the number zero; for the Cue-only conditions, a 'X%' symbol was displayed, indicating that participants shouldn't press the dynamometer and only watch the screen. In the Reward and Effort-only conditions, after the symbols were presented, 3000 ms were available to participants press the dynamometer as they wanted. Real-time feedback of how much participants were earning during each trial was displayed meanwhile pressure grip. The real-time feedback of the amount earned was proportional to the area under the curve of the trial, normalized by the participant's maximum force obtained during calibration phase. For example, if a participant employed on average 80% of the maximum force during the effort period, he would earn R\$40 out of the maximum amount (R\$50) in that trial. The feedback value was updated every 100ms. After the effort phase, a green square around the final number indicating how much was accumulated in that trial was displayed for 1500ms. Notably, although previous studies used mainly binary choices as 'decisions', in our task 'decisions' were considered as the amount of effort one employed in each condition.

The experiment consisted of 120 trials: 72 trials per Reward condition (equally distributed across Self, Fans and Non-fans conditions), 24 trials for Effort-only (8 per Self/Fans/Non-fans) and 24 trials of Cue-only (8 per Self/Fans/Non-fans). Moreover, there were 10 baseline periods of 12 s (null events) and thirty video clips (range duration: 6 s–10 s), resulting in an overall total duration of ~38 min divided in three experimental runs of ~13 min. The preliminary amount of money accumulated in each main condition was displayed in the middle and after each run. After the scanning session, psychometric measures were filled again (there were no significant statistical differences in pre- and post-scan scores), and participants were then debriefed.

A detailed explanation-sheet describing the task was presented to participants before entering the scanner and they could ask any question to the experimenter. Additionally, a simulation of the task was performed in a computer screen to familiarize participants with the trial structure and the general procedure. Finally, after the calibration phase, there were 5 practicing trials inside the scanner for familiarization with the fMRI environment and further clarifications, if there were any remaining doubts.

Behavioural data analysis. The behavioural effects of condition on mean effort (mean AUC) were tested using repeated measures GLM in SPSS 22 (SPSS, Inc.). Šidák correction adjusted for multiple comparisons *post hoc* analyses of mean estimates were used to compare mean effort among conditions. Spearman Rho was used to evaluate possible relationships of psychometric measures and effort put in the task. A significance threshold (α) of 0.05, two-tailed, was adopted for all statistical tests, except when Bonferroni alpha adjustment for multiple comparison was applied.

fMRI data acquisition and analysis. MRI data were acquired on a 3 T Achieva scanner (Philips Medical Systems) using a T2*-weighted echoplanar (BOLD contrast) sequence (TR = 2000 ms, TE = 22 ms, matrix = 80×80 , FOV = 240 mm, flip angle = 90° , voxel size 3×3 mm; slice thickness = 3 mm, 40 slices, no gap; 256 volumes per run, 3 runs). Total functional scanning time was ~38 min. Before each run, five dummy volumes were collected for T1 equilibration purposes. A SENSE factor of 1.5 and dynamic stabilization were additionally used. These parameters were based on careful sequence optimization to maximize temporal signal-to-noise⁹⁴ in brain regions that normally suffer from magnetic susceptibility effects, including the basal forebrain areas and ventromedial regions of the prefrontal cortex. High-resolution anatomical images were acquired with a 3D turbo field echo T1-weighted sequence (TR = 13 s, TE = 1.4 s, matrix = 256×356 , FOV = 240 mm, slice thickness = 1 mm, 140 slices). Head motion was restricted by using foam padding and straps over the forehead and under the chin. Finally, respiratory cycle was recorded during fMRI acquisitions in order to avoid possible non-neural physiological changes as a result of the effort task.

The images were analysed using Statistical Parametric Mapping 12 software (SPM12; Wellcome Department of Cognitive Neurology, London, United Kingdom; www.fil.ion.ucl.ac.uk/spm). Motion correction was performed by realignment to the first image. All functional datasets underwent realignment, slice-time correction and normalization to the standard MNI space based on the coregistered anatomical segmentation. The original isotropic 3mm voxel resolution was kept constant. Functional data were smoothed using a 6 mm FWHM Gaussian spatial kernel.

Statistical analysis was performed using the two-stage mixed-effects GLM approach implemented in SPM12. At the first level analysis, box-car functions at stimulus onset for the different event types were convolved with SPM12's hemodynamic response function to form covariates of a GLM with global AR(1) auto correlation correction and high-pass filter of 128 s. The GLM was comprised by nine regressors representing the experimental conditions (3 Reward conditions [Self, Fans and Non-fans], 3 Effort-only conditions after each rewarded ones and 3 Cue-only conditions) during the entire trial (6.5 s) and two regressors representing the movie clips of the participants' own fan group and a neutral fan group with the exact stimulus duration (Mean: 7.06 s SD: ± 1.53 s). Furthermore, the six movement parameters obtained from realignment and nine regressors describing the respiratory cycle using RETROICOR⁹⁵ were included as regressors of no interest to account for residual movement variance and respiration related effects (PhysIO Toolbox⁹⁶). At the first level t-contrasts of each Reward vs. Effort-only conditions were created. These contrasts were used at the second level to assess specific brain activity related to each Reward condition, controlling for the effort. Therefore, the Effort-only condition was used as a high-level baseline contrast at the first level, so that we could control for the motor aspect of the task and focus on the motivational aspect at the second level.

At the second-level, one sample *t*-tests of each Reward vs. Effort-only condition (i.e. [Fans – Effort-only], [Self – Effort-only] and [Non-fans – Effort-only]) were performed for an exploratory evaluation of different brain areas related to each Reward condition. These whole-brain maps were inspected with a cluster-defining threshold of $p < 0.001$, to avoid higher number of false positives⁹⁷ with cluster wise FWE correction as implemented in SPM 12 based on Random Field Theory⁹⁸. Next, common brain areas related to monetary reward to self, ingroups and non-ingroups were evaluated controlling for the effort. Because conventional conjunction analysis for between subjects effects cannot be performed with factorial designs in SPM, binarized *t*-contrasts maps (voxel level $p < 0.001$, cluster FWE corrected $p < 0.05$) of each Reward vs. Effort-only conditions were subjected to a conjunction analysis, by employing the logical AND operator between the cluster level thresholded contrasts ([Self – Effort-only] AND [Fans – Effort-only] AND [Non-fans – Effort-only]). This approach revealed voxels that were consistently and significantly activated in all three Reward versus Effort-only contrasts (i.e., significant in the global conjunction of these contrasts⁵⁷).

Specific brain areas related to each Reward condition were assessed at the second-level with paired *t*-tests of the first-level contrast of Reward vs. Effort-only conditions (e.g. [Fans – Effort-only] – [Non-fans – Effort-only]). As before, the whole-brain maps were inspected with a threshold of $p < 0.001$ with cluster wise FWE correction as implemented in SPM 12⁹⁸. Considering our *a priori* hypotheses, the same procedure of previous studies^{14,35,37} were used, and SVC were applied in *a priori* ROIs at whole-brain voxel threshold of $p < 0.005$, uncorrected.

Furthermore, functional connectivity (FC) was evaluated through seed to voxels BSC FC analysis with BASCO toolbox⁹⁹. BSC FC was originally proposed by Rissman *et al.*¹⁰⁰ and recently have been suggested more appropriate for event-related designs than psychophysiological interaction methods⁵⁸. The mOFC cluster revealed by the conjunction analysis between each Reward > Effort-only contrast was used as seed-ROI (*see Results*). *z*-transformed correlation maps for each Reward condition were used in a second level paired *t*-tests. These maps were inspected with a threshold of $p < 0.005$ (uncorrected) and SVC was applied in *a priori* ROIs.

A priori ROIs included SCC, VS and mOFC. The SCC ROI MNI coordinate (0, 26, –5) was determined by previous studies^{14,101}. As for the mOFC and VS, ROIs centres MNI coordinates were obtained from meta-analyses, being (–2, 40, –4) and (12/–12, 10, –6), respectively^{20,54}. A 10 mm sphere centred on the above coordinates was used as the search volume for every ROIs. All reported coordinates are in Montreal Neurological Institute space. Labelling of brain regions was based on the Harvard-Oxford probabilistic atlas and standard anatomical criteria¹⁰². The datasets generated in the current study are available from the corresponding author on reasonable request.

References

- Boyd, R., Richerson, P. J. & Henrich, J. Rapid cultural adaptation can facilitate the evolution of large-scale cooperation. *Behav. Ecol. Sociobiol.* **65**, 431–444, <https://doi.org/10.1007/s00265-010-1100-3> (2011).
- Bowles, S. Did Warfare Among Ancestral Hunter-Gatherers Affect the Evolution of Human Social Behaviors? *Science* (80–). **324**, 1293–1298, <https://doi.org/10.1126/science.1168112> (2009).
- Baumeister, R. F. & Leary, M. R. The need to belong: Desire for interpersonal attachments as a fundamental human motivation. *Psychol. Bull.* **117**, 497–529, <https://doi.org/10.1037/0033-2909.117.3.497> (1995).
- Tajfel, H. & Turner, J. C. An integrative theory of intergroup conflict In *Psychology of Intergroup Relations*. in *The Social Psychology of Intergroup Relations*. (eds Austin, W. G. & Worchel, S.) 33–47 (Brooks-Cole, 1979).
- Penner, L. A., Dovidio, J. F., Piliavin, J. A. & Schroeder, D. A. Prosocial Behavior: Multilevel Perspectives. *Annu. Rev. Psychol.* **56**, 365–392, <https://doi.org/10.1146/annurev.psych.56.091103.070141> (2005).
- Ellemers, N., Spears, R. & Doosje, B. Self and Social Identity. *Annu. Rev. Psychol.* **53**, 161–186, <https://doi.org/10.1146/annurev.psych.53.100901.135228> (2002).
- Shkurko, A. V. Is social categorization based on relational ingroup/outgroup opposition? A meta-analysis. *Soc. Cogn. Affect. Neurosci.* **8**, 870–877, <https://doi.org/10.1093/scan/nss085> (2013).
- Cikara, M. & Van Bavel, J. J. The Neuroscience of Intergroup Relations: An Integrative Review. *Perspect. Psychol. Sci.* **9**, 245–274, <https://doi.org/10.1177/1745691614527464> (2014).
- Volz, K. G., Kessler, T. & von Cramon, D. Y. In-group as part of the self: In-group favoritism is mediated by medial prefrontal cortex activation. *Soc. Neurosci.* **4**, 244–60, <https://doi.org/10.1080/17470910802553565> (2009).
- Rilling, J. K., Dagenais, J. E., Goldsmith, D. R., Glenn, A. L. & Pagnoni, G. Social cognitive neural networks during in-group and out-group interactions. *Neuroimage* **41**, 1447–61, <https://doi.org/10.1016/j.neuroimage.2008.03.044> (2008).
- Telzer, E. H., Ichien, N. & Qu, Y. The ties that bind: Group membership shapes the neural correlates of in-group favoritism. *Neuroimage* **115**, 42–51, <https://doi.org/10.1016/j.neuroimage.2015.04.035> (2015).
- Hackel, L. M., Zaki, J. & Van Bavel, J. J. Social identity shapes social valuation: evidence from prosocial behavior and vicarious reward. *Soc. Cogn. Affect. Neurosci.*, <https://doi.org/10.1093/scan/nxx045> (2017).
- Haber, S. N. & Knutson, B. The reward circuit: linking primate anatomy and human imaging. *Neuropsychopharmacology* **35**, 4–26, <https://doi.org/10.1038/npp.2009.129> (2010).
- Moll, J. *et al.* Human fronto-mesolimbic networks guide decisions about charitable donation. *Proc. Natl. Acad. Sci. USA* **103**, 15623–8, <https://doi.org/10.1073/pnas.0604475103> (2006).
- Harbaugh, W. T., Mayr, U. & Burghart, D. R. Neural responses to taxation and voluntary giving reveal motives for charitable donations. *Science* **316**, 1622–5, <https://doi.org/10.1126/science.1140738> (2007).
- Bartels, A. & Zeki, S. The neural basis of romantic love. *Neuroreport* **11**, 3829–34, <https://doi.org/10.1097/00001756-200011270-00046> (2000).
- Aron, A. Reward, Motivation, and Emotion Systems Associated With Early-Stage Intense Romantic Love. *J. Neurophysiol.* **94**, 327–337, <https://doi.org/10.1152/jn.00838.2004> (2005).
- Bartra, O., McGuire, J. T. & Kable, J. W. The valuation system: A coordinate-based meta-analysis of BOLD fMRI experiments examining neural correlates of subjective value. *Neuroimage* **76**, 412–427, <https://doi.org/10.1016/j.neuroimage.2013.02.063> (2013).
- Sescousse, G., Caldú, X., Segura, B. & Dreher, J.-C. Processing of primary and secondary rewards: A quantitative meta-analysis and review of human functional neuroimaging studies. *Neurosci. Biobehav. Rev.* **37**, 681–696, <https://doi.org/10.1016/j.neubiorev.2013.02.002> (2013).
- Clithero, J. & Rangel, A. Informatic parcellation of the network involved in the computation of subjective value. *Soc. Cogn. Affect. Neurosci.* **9**, 1289–1302, <https://doi.org/10.1093/scan/nst106> (2014).

21. Kable, J. W. & Glimcher, P. W. The neural correlates of subjective value during intertemporal choice. *Nat. Neurosci.* **10**, 1625–33, <https://doi.org/10.1038/nn2007> (2007).
22. Rangel, A. & Hare, T. Neural computations associated with goal-directed choice. *Curr. Opin. Neurobiol.* **20**, 262–270, <https://doi.org/10.1016/j.comb.2010.03.001> (2010).
23. Stalnaker, T. A., Cooch, N. K. & Schoenbaum, G. What the orbitofrontal cortex does not do. *Nat. Neurosci.* **18**, 620–627, <https://doi.org/10.1038/nn.3982> (2015).
24. Krueger, F., Barbey, A. K. & Grafman, J. The medial prefrontal cortex mediates social event knowledge. *Trends Cogn. Sci.* **13**, 103–109, <https://doi.org/10.1016/j.tics.2008.12.005> (2009).
25. Ruff, C. C. & Fehr, E. The neurobiology of rewards and values in social decision making. *Nat. Rev. Neurosci.*, <https://doi.org/10.1038/nrn3776> (2014).
26. Molenberghs, P. & Morrison, S. The role of the medial prefrontal cortex in social categorization. *Soc. Cogn. Affect. Neurosci.* **9**, 292–296, <https://doi.org/10.1093/scan/nss135> (2012).
27. Molenberghs, P. *et al.* The influence of group membership and individual differences in psychopathy and perspective taking on neural responses when punishing and rewarding others. *Hum. Brain Mapp.* **0**, <https://doi.org/10.1002/hbm.22527> (2014).
28. Moll, J., Zahn, R., de Oliveira-Souza, R., Krueger, F. & Grafman, J. Opinion: the neural basis of human moral cognition. *Nat. Rev. Neurosci.* **6**, 799–809, <https://doi.org/10.1038/nrn1768> (2005).
29. Tabibnia, G. & Lieberman, M. D. Fairness and cooperation are rewarding: evidence from social cognitive neuroscience. *Ann. N. Y. Acad. Sci.* **1118**, 90–101, <https://doi.org/10.1196/annals.1412.001> (2007).
30. Bhanji, J. P. & Delgado, M. R. The Social Brain and Reward: Social Information Processing in the Human Striatum. *Wiley Interdiscip. Rev. Cogn. Sci.* **5**, 61–73, <https://doi.org/10.1002/wcs.1266> (2014).
31. FeldmanHall, O., Dalgleish, T., Evans, D. & Mobbs, D. Empathic concern drives costly altruism. *Neuroimage* **105**, 347–356, <https://doi.org/10.1016/j.neuroimage.2014.10.043> (2015).
32. Hsu, M., Anen, C. & Quartz, S. R. The right and the good: distributive justice and neural encoding of equity and efficiency. *Science* **320**, 1092–5, <https://doi.org/10.1126/science.1153651> (2008).
33. Morelli, S. A., Rameson, L. T. & Lieberman, M. D. The neural components of empathy: predicting daily prosocial behavior. *Soc. Cogn. Affect. Neurosci.* **9**, 39–47, <https://doi.org/10.1093/scan/nss088> (2014).
34. Lockwood, P. L., Apps, M. A. J., Valton, V., Viding, E. & Roiser, J. P. Neurocomputational mechanisms of prosocial learning and links to empathy. *Proc. Natl. Acad. Sci.* **113**, 9763–9768, <https://doi.org/10.1073/pnas.1603198113> (2016).
35. Moll, J. *et al.* A neural signature of affiliative emotion in the human septohypothalamic area. *J. Neurosci.* **32**, 12499–505, <https://doi.org/10.1523/jneurosci.6508-11.2012> (2012).
36. Mobbs, D. *et al.* A key role for similarity in vicarious reward. *Science* **324**, 900, <https://doi.org/10.1126/science.1170539> (2009).
37. Rüsçh, N. *et al.* You and your kin: Neural signatures of family-based group perception in the subgenual cortex. *Soc. Neurosci.* **9**, 326–31, <https://doi.org/10.1080/17470919.2014.912676> (2014).
38. Morrison, S., Decety, J. & Molenberghs, P. The neuroscience of group membership. *Neuropsychologia* **50**, 2114–2120, <https://doi.org/10.1016/j.neuropsychologia.2012.05.014> (2012).
39. Insel, T. R. & Young, L. J. The neurobiology of attachment. *Nat. Rev. Neurosci.* **2**, 129–36, <https://doi.org/10.1038/35053579> (2001).
40. Freedman, L. J., Insel, T. R. & Smith, Y. Subcortical projections of area 25 (subgenual cortex) of the macaque monkey. *J. Comp. Neurol.* **421**, 172–88, [https://doi.org/10.1002/\(SICI\)1096-9861\(20000529\)421:2<172::AID-CNE4>3.0.CO;2-8](https://doi.org/10.1002/(SICI)1096-9861(20000529)421:2<172::AID-CNE4>3.0.CO;2-8) (2000).
41. Morgane, P. J., Galler, J. R. & Mokler, D. J. A review of systems and networks of the limbic forebrain/limbic midbrain. *Prog. Neurobiol.* **75**, 143–60, <https://doi.org/10.1016/j.pneurobio.2005.01.001> (2005).
42. Meyer-Lindenberg, A., Domes, G., Kirsch, P. & Heinrichs, M. Oxytocin and vasopressin in the human brain: social neuropeptides for translational medicine. *Nat. Rev. Neurosci.* **12**, 524–38, <https://doi.org/10.1038/nrn3044> (2011).
43. Depue, R. A. & Morrone-Strupinsky, J. V. A neurobehavioral model of affiliative bonding: Implications for conceptualizing a human trait of affiliation. *Behav. Brain Sci.* **28**, 313–395, <https://doi.org/10.1017/S0140525X05000063> (2005).
44. Preston, S. D. The origins of altruism in offspring care. *Psychol. Bull.* **139**, 1305–1341, <https://doi.org/10.1037/a0031755> (2013).
45. Feldman, R. The Neurobiology of Human Attachments. *Trends Cogn. Sci.* **21**, 80–99, <https://doi.org/10.1016/j.tics.2016.11.007> (2017).
46. Weisel, O. & Böhm, R. ‘Ingroup love’ and ‘outgroup hate’ in intergroup conflict between natural groups. *J. Exp. Soc. Psychol.* **60**, 110–120, <https://doi.org/10.1016/j.jesp.2015.04.008> (2015).
47. Newson, M., Buhrmester, M. & Whitehouse, H. Explaining Lifelong Loyalty: The Role of Identity Fusion and Self-Shaping Group Events. *PLoS One* **11**, e0160427, <https://doi.org/10.1371/journal.pone.0160427> (2016).
48. Wann, D. L. & Branscombe, N. R. Sports fans: Measuring degree of identification with their team. *Int. J. Sport Psychol.* **24**, 1–17 (1993).
49. Wann, D. L. & Dolan, T. J. Attributions of Highly Identified Sports Spectators. *J. Soc. Psychol.* **134**, 783–792, <https://doi.org/10.1080/00224545.1994.9923013> (1994).
50. Stone, C. The Role of Football in EverydayLife. *Soccer Soc.* **8**, 169–184, <https://doi.org/10.1080/14660970701224319> (2007).
51. Batson, C. D. *Altruism in Humans*. (Oxford University Press, 2010).
52. Chong, T. T.-J., Bonnelle, V. & Husain, M. Quantifying motivation with effort-based decision-making paradigms in health and disease. in *Motivation: Theory, Neurobiology and Applications* 71–100 (Elsevier B.V., 2016).
53. Stroebe, K., Lodewijckx, H. & Spears, R. Do Unto Others as They Do Unto You: Reciprocity and Social Identification as Determinants of Ingroup Favoritism. *Personal. Soc. Psychol. Bull.* **31**, 831–845, <https://doi.org/10.1177/0146167204271659> (2005).
54. Liu, X., Hairston, J., Schrier, M. & Fan, J. Common and distinct networks underlying reward valence and processing stages: A meta-analysis of functional neuroimaging studies. *Neurosci. Biobehav. Rev.* **35**, 1219–1236, <https://doi.org/10.1016/j.neubiorev.2010.12.012> (2011).
55. Hare, T. A., O’Doherty, J., Camerer, C. F., Schultz, W. & Rangel, A. Dissociating the role of the orbitofrontal cortex and the striatum in the computation of goal values and prediction errors. *J. Neurosci.* **28**, 5623–30, <https://doi.org/10.1523/jneurosci.1309-08.2008> (2008).
56. Atzil, S., Hendler, T., Zagoory-Sharon, O., Winetraub, Y. & Feldman, R. Synchrony and Specificity in the Maternal and the Paternal Brain: Relations to Oxytocin and Vasopressin. *J. Am. Acad. Child Adolesc. Psychiatry* **51**, 798–811, <https://doi.org/10.1016/j.jaac.2012.06.008> (2012).
57. Nichols, T., Brett, M., Andersson, J., Wager, T. & Poline, J.-B. Valid conjunction inference with the minimum statistic. *Neuroimage* **25**, 653–660, <https://doi.org/10.1016/j.neuroimage.2004.12.005> (2005).
58. Cisler, J. M., Bush, K. & Steele, J. S. A comparison of statistical methods for detecting context-modulated functional connectivity in fMRI. *Neuroimage* **84**, 1042–1052, <https://doi.org/10.1016/j.neuroimage.2013.09.018> (2014).
59. van Veelen, R., Otten, S., Cadinu, M. & Hansen, N. An Integrative Model of Social Identification: Self-Stereotyping and Self-Anchoring as Two Cognitive Pathways. *Personal. Soc. Psychol. Rev.* **20**, 1–24, <https://doi.org/10.1177/1088868315576642> (2015).
60. Montague, J. Corinthians: Craziest fans in the world? CNN (2012). Available at: <http://edition.cnn.com/2012/12/14/sport/football/football-club-world-cup-crazy-fans-corinthians/>. (Accessed: 8th August 2017).
61. Witte, D. R., Bots, M. L., Hoes, A. W. & Grobbee, D. E. Cardiovascular mortality in Dutch men during 1996 European football championship: longitudinal population study. *BMJ* **321**, 1552–1554, <https://doi.org/10.1136/bmj.321.7276.1552> (2000).
62. Carroll, D., Ebrahim, S., Tilling, K., Macleod, J. & Smith, G. D. Admissions for myocardial infarction and World Cup football: database survey. *BMJ* **325**, 1439–42, <https://doi.org/10.1136/bmj.325.7378.1439> (2002).
63. Borges, D. G. S., Monteiro, R. A., Schmidt, A. & Pazin-Filho, A. World Soccer Cup as a Trigger of Cardiovascular Events. *Arq. Bras. Cardiol.*, <https://doi.org/10.5935/abc.20130105> (2013).

64. Kirkup, W. & Merrick, D. W. A matter of life and death: population mortality and football results. *J. Epidemiol. Community Health* **57**, 429–32, <https://doi.org/10.1136/jech.57.6.429> (2003).
65. Kümmerli, R., Burton-Chellew, M. N., Ross-Gillespie, A. & West, S. A. Resistance to extreme strategies, rather than prosocial preferences, can explain human cooperation in public goods games. *Proc. Natl. Acad. Sci. USA* **107**, 10125–30, <https://doi.org/10.1073/pnas.1000829107> (2010).
66. Burton-Chellew, M. N. & West, S. A. Prosocial preferences do not explain human cooperation in public-goods games. *Proc. Natl. Acad. Sci. USA* **110**, 216–21, <https://doi.org/10.1073/pnas.1210960110> (2013).
67. Hagen, E. H. & Hammerstein, P. Game theory and human evolution: a critique of some recent interpretations of experimental games. *Theor. Popul. Biol.* **69**, 339–48, <https://doi.org/10.1016/j.tpb.2005.09.005> (2006).
68. Winking, J. & Mizer, N. Natural-field dictator game shows no altruistic giving. *Evol. Hum. Behav.* **34**, 288–293, <https://doi.org/10.1016/j.evolhumbehav.2013.04.002> (2013).
69. Morelli, S. A., Sacchet, M. D. & Zaki, J. Common and distinct neural correlates of personal and vicarious reward: A quantitative meta-analysis. *Neuroimage* **112**, 244–253, <https://doi.org/10.1016/j.neuroimage.2014.12.056> (2015).
70. Zaki, J. & Ochsner, K. N. The neuroscience of empathy: progress, pitfalls and promise. *Nat. Neurosci.* **15**, 675–680, <https://doi.org/10.1038/nn.3085> (2012).
71. Civali, C., Crescentini, C., Rustichini, A. & Rumiati, R. I. Equality versus self-interest in the brain: differential roles of anterior insula and medial prefrontal cortex. *Neuroimage* **62**, 102–12, <https://doi.org/10.1016/j.neuroimage.2012.04.037> (2012).
72. Singer, T. *et al.* Empathy for pain involves the affective but not sensory components of pain. *Science* **303**, 1157–62, <https://doi.org/10.1126/science.1093535> (2004).
73. Bernhardt, B. C. & Singer, T. The neural basis of empathy. *Annu. Rev. Neurosci.* **35**, 1–23, <https://doi.org/10.1146/annurev-neuro-062111-150536> (2012).
74. Zaki, J. & Mitchell, J. P. Equitable decision making is associated with neural markers of intrinsic value. *Proc. Natl. Acad. Sci.* **108**, 19761–19766, <https://doi.org/10.1073/pnas.1112324108> (2011).
75. Schoenbaum, G., Takahashi, Y., Liu, T. L. & Mcdannald, M. A. Does the orbitofrontal cortex signal value? *Ann. N. Y. Acad. Sci.* **1239**, 87–99, <https://doi.org/10.1111/j.1749-6632.2011.06210.x> (2011).
76. Hein, G., Silani, G., Preuschoff, K., Batson, C. D. & Singer, T. Neural responses to ingroup and outgroup members' suffering predict individual differences in costly helping. *Neuron* **68**, 149–60, <https://doi.org/10.1016/j.neuron.2010.09.003> (2010).
77. Mathur, V. A., Harada, T., Lipke, T. & Chiao, J. Y. Neural basis of extraordinary empathy and altruistic motivation. *Neuroimage* **51**, 1468–1475, <https://doi.org/10.1016/j.neuroimage.2010.03.025> (2010).
78. Bernhard, H., Fischbacher, U. & Fehr, E. Parochial altruism in humans. *Nature* **442**, 912–5, <https://doi.org/10.1038/nature04981> (2006).
79. Choi, J.-K. & Bowles, S. The coevolution of parochial altruism and war. *Science* **318**, 636–40, <https://doi.org/10.1126/science.1144237> (2007).
80. Diekhof, E. K., Wittmer, S. & Reimers, L. Does competition really bring out the worst? testosterone, social distance and inter-male competition shape parochial altruism in human males. *PLoS One* **9**, <https://doi.org/10.1371/journal.pone.0098977> (2014).
81. Reimers, L., Büchel, C. & Diekhof, E. K. Neural substrates of male parochial altruism are modulated by testosterone and behavioral strategy. *Neuroimage* **156**, <https://doi.org/10.1016/j.neuroimage.2017.05.033> (2017).
82. Crosson, P. L., Walton, M. E., O'Reilly, J. X., Behrens, T. E. J. & Rushworth, M. F. S. Effort-Based Cost-Benefit Valuation and the Human Brain. *J. Neurosci.* **29**, 4531–4541, <https://doi.org/10.1523/jneurosci.4515-08.2009> (2009).
83. Prévost, C., Pessiglione, M., Météreau, E., Cléry-Melin, M.-L. & Dreher, J.-C. Separate valuation subsystems for delay and effort decision costs. *J. Neurosci.* **30**, 14080–90, <https://doi.org/10.1523/jneurosci.2752-10.2010> (2010).
84. Stoppel, C. M. *et al.* Neural processing of reward magnitude under varying attentional demands. *Brain Res.* **1383**, 218–229, <https://doi.org/10.1016/j.brainres.2011.01.095> (2011).
85. Kurniawan, I. T., Guitart-Masip, M., Dayan, P. & Dolan, R. J. Effort and Valuation in the Brain: The Effects of Anticipation and Execution. *J. Neurosci.* **33**, 6160–6169, <https://doi.org/10.1523/jneurosci.4777-12.2013> (2013).
86. Botvinick, M. M., Huffstetler, S. & McGuire, J. T. Effort discounting in human nucleus accumbens. *Cogn. Affect. Behav. Neurosci.* **9**, 16–27, <https://doi.org/10.3758/CABN.9.1.16> (2009).
87. McDonald, M. M., Navarrete, C. D. & Van Vugt, M. Evolution and the psychology of intergroup conflict: the male warrior hypothesis. *Philos. Trans. R. Soc. Lond. B. Biol. Sci.* **367**, 670–9, <https://doi.org/10.1098/rstb.2011.0301> (2012).
88. Balliet, D., Li, N. P., Macfarlan, S. J. & Van Vugt, M. Sex differences in cooperation: a meta-analytic review of social dilemmas. *Psychol. Bull.* **137**, 881–909, <https://doi.org/10.1037/a0025354> (2011).
89. Vugt, M. V., Cremer, D. D. & Janssen, D. P. Gender Differences in Cooperation and Competition: The Male-Warrior Hypothesis. *Psychol. Sci.* **18**, 19–23, <https://doi.org/10.1111/j.1467-9280.2007.01842.x> (2007).
90. Wachelke, J. F. R., de Andrade, A. L., Tavares, L. & Neves, J. R. L. L. Mensuração da identificação com times de futebol: evidências de validade fatorial e consistência interna de duas escalas. *Arq. Bras. Psicol.* **60**, 98–110 (2008).
91. Rüsçh, N. *et al.* Ingroup perception and responses to stigma among persons with mental illness. *Acta Psychiatr. Scand.* **120**, 320–8, <https://doi.org/10.1111/j.1600-0447.2009.01403.x> (2009).
92. Buhmester, M. D., Fraser, W. T., Lanman, J. A., Whitehouse, H. & Swann, W. B. When Terror Hits Home: Identity Fused Americans Who Saw Boston Bombing Victims as 'Family' Provided Aid. *Self Identity* **14**, 253–270, <https://doi.org/10.1080/15298868.2014.992465> (2015).
93. Postmes, T., Haslam, S. A. & Jans, L. A single-item measure of social identification: Reliability, validity, and utility. *Br. J. Soc. Psychol.* **52**, 597–617, <https://doi.org/10.1111/bjso.12006> (2013).
94. Bodurka, J., Ye, F., Petridou, N., Murphy, K. & Bandettini, P. A. Mapping the MRI voxel volume in which thermal noise matches physiological noise—Implications for fMRI. *Neuroimage* **34**, 542–549, <https://doi.org/10.1016/j.neuroimage.2006.09.039> (2007).
95. Glover, G. H., Li, T. Q. & Ress, D. Image-based method for retrospective correction of physiological motion effects in fMRI: RETROICOR. *Magn. Reson. Med.* **44**, 162–7, [https://doi.org/10.1002/1522-2594\(200007\)44:1<162::AID-MRM23>3.0.CO;2-E](https://doi.org/10.1002/1522-2594(200007)44:1<162::AID-MRM23>3.0.CO;2-E) (2000).
96. Kasper, L. *et al.* The PhysIO Toolbox for Modeling Physiological Noise in fMRI Data. *J. Neurosci. Methods* **276**, 56–72, <https://doi.org/10.1016/j.jneumeth.2016.10.019> (2017).
97. Eklund, A., Nichols, T. E. & Knutsson, H. Cluster failure: Why fMRI inferences for spatial extent have inflated false-positive rates. *Proc. Natl. Acad. Sci.* **113**, 7900–7905, <https://doi.org/10.1073/pnas.1602413113> (2016).
98. Flandin, G. & Friston, K. J. Analysis of family-wise error rates in statistical parametric mapping using random field theory. Preprint at <https://arxiv.org/abs/1606.08199> (2016).
99. Göttlich, M., Beyer, F. & Krämer, U. M. BASCO: a toolbox for task-related functional connectivity. *Front. Syst. Neurosci.* **9**, 126, <https://doi.org/10.3389/fnsys.2015.00126> (2015).
100. Rissman, J., Gazzaley, A. & D'Esposito, M. Measuring functional connectivity during distinct stages of a cognitive task. *Neuroimage* **23**, 752–763, <https://doi.org/10.1016/j.neuroimage.2004.06.035> (2004).
101. Zahn, R., de Oliveira-Souza, R., Bramati, I., Garrido, G. & Moll, J. Subgenual cingulate activity reflects individual differences in empathic concern. *Neurosci. Lett.* **457**, 107–10, <https://doi.org/10.1016/j.neulet.2009.03.090> (2009).
102. Mai, J., Majtanik, M. & Paxinos, G. *Atlas of the Human Brain*. (Academic Press, 2015).

Acknowledgements

This research was funded by grants from the Conselho Nacional de Desenvolvimento Científico e Tecnológico (CNPq) to TB and Agence Nationale pour la Recherche (ANR “Brain Choice” n° 14-CE13-0006) to JCD. This work was performed within the framework of the LABEX ANR-11-LABEX-0042 of the Université de Lyon within the program “Investissements d’Avenir” (ANR-11-IDEX-0007) operated by the French National Research Agency (ANR) to JCD.

Author Contributions

T.B., P.B., S.H., A.E., J.C.D. and J.M. designed the experiments. T.B., P.B. and S.H. performed the experiments, T.B., S.H., J.C.D. and J.M. analysed the data. T.B., P.B., S.H., A.E., R.Z., R.O., J.C.D. and J.M. wrote the paper. J.C.D. and J.M. share equal senior contribution.

Additional Information

Supplementary information accompanies this paper at <https://doi.org/10.1038/s41598-017-15385-7>.

Competing Interests: The authors declare that they have no competing interests.

Publisher's note: Springer Nature remains neutral with regard to jurisdictional claims in published maps and institutional affiliations.



Open Access This article is licensed under a Creative Commons Attribution 4.0 International License, which permits use, sharing, adaptation, distribution and reproduction in any medium or format, as long as you give appropriate credit to the original author(s) and the source, provide a link to the Creative Commons license, and indicate if changes were made. The images or other third party material in this article are included in the article's Creative Commons license, unless indicated otherwise in a credit line to the material. If material is not included in the article's Creative Commons license and your intended use is not permitted by statutory regulation or exceeds the permitted use, you will need to obtain permission directly from the copyright holder. To view a copy of this license, visit <http://creativecommons.org/licenses/by/4.0/>.

© The Author(s) 2017