



HAL
open science

Convergent evolution in toothed whale cochleae

Travis Park, Bastien Mennecart, Loïc Costeur, Camille Grohé, Natalie Cooper

► **To cite this version:**

Travis Park, Bastien Mennecart, Loïc Costeur, Camille Grohé, Natalie Cooper. Convergent evolution in toothed whale cochleae. *BMC Evolutionary Biology*, 2019, 19 (1), 10.1186/s12862-019-1525-x . hal-02337666

HAL Id: hal-02337666

<https://hal.science/hal-02337666>

Submitted on 29 Oct 2019

HAL is a multi-disciplinary open access archive for the deposit and dissemination of scientific research documents, whether they are published or not. The documents may come from teaching and research institutions in France or abroad, or from public or private research centers.

L'archive ouverte pluridisciplinaire **HAL**, est destinée au dépôt et à la diffusion de documents scientifiques de niveau recherche, publiés ou non, émanant des établissements d'enseignement et de recherche français ou étrangers, des laboratoires publics ou privés.



Distributed under a Creative Commons Attribution 4.0 International License

RESEARCH ARTICLE

Open Access

Convergent evolution in toothed whale cochleae



Travis Park^{1*} , Bastien Mennecart^{2,3}, Loïc Costeur², Camille Grohé^{4,5} and Natalie Cooper¹

Abstract

Background: Odontocetes (toothed whales) are the most species-rich marine mammal lineage. The catalyst for their evolutionary success is echolocation - a form of biological sonar that uses high-frequency sound, produced in the forehead and ultimately detected by the cochlea. The ubiquity of echolocation in odontocetes across a wide range of physical and acoustic environments suggests that convergent evolution of cochlear shape is likely to have occurred. To test this, we used SURFACE; a method that fits Ornstein-Uhlenbeck (OU) models with stepwise AIC (Akaike Information Criterion) to identify convergent regimes on the odontocete phylogeny, and then tested whether convergence in these regimes was significantly greater than expected by chance.

Results: We identified three convergent regimes: (1) True's (*Mesoplodon mirus*) and Cuvier's (*Ziphius cavirostris*) beaked whales; (2) sperm whales (*Physeter macrocephalus*) and all other beaked whales sampled; and (3) pygmy (*Kogia breviceps*) and dwarf (*Kogia sima*) sperm whales and Dall's porpoise (*Phocoenoides dalli*). Interestingly the 'river dolphins', a group notorious for their convergent morphologies and riverine ecologies, do not have convergent cochlear shapes. The first two regimes were significantly convergent, with habitat type and dive type significantly correlated with membership of the sperm whale + beaked whale regime.

Conclusions: The extreme acoustic environment of the deep ocean likely constrains cochlear shape, causing the cochlear morphology of sperm and beaked whales to converge. This study adds support for cochlear morphology being used to predict the ecology of extinct cetaceans.

Keywords: Convergence, Odontoceti, Inner ear, Echolocation, Ecomorphology, Phylogenetic comparative methods

Background

Odontocetes (toothed whales) are the most successful lineage of marine mammal, with 75 extant species inhabiting every ocean, and several river systems [1]. The catalyst for their evolutionary success is echolocation - a complex form of biological sonar where high-frequency sounds are produced in the nasal passages and sent out into the surrounding environment [2]. The reflected signal is ultimately detected by the cochlea, allowing odontocetes to construct a mental model of their surroundings [3]. Previous studies have identified different echolocation types and cochlear morphologies, largely correlated with habitat, hearing abilities and phylogenetic relationships [4–7]. There is an emerging consensus that the shape of the cochlea is an excellent proxy to distinguish these in

both extant and extinct taxa, allowing inferences to be made about ecology and phylogenetic position, even from fragmentary remains [7–9].

All extant toothed whales are believed to echolocate [5], and even the earliest known taxa are thought to have had the ability [8, 10–12], but they do so in a wide spectrum of environments; ranging from the complex, turbid and shallow waters occupied by river dolphins to the wide-open, clear, deep-water spaces that oceanic (pelagic) and deep diving species reside in. Different species also feed on different prey types, requiring varying degrees of resolution in their echolocation signal. Additionally, physical factors such as water temperature, depth and salinity all constrain sound speed through the aquatic medium and the wavelength of any given frequency [3]. We can therefore hypothesize that species occupying similar ecological niches will convergently evolve cochleae of a similar shape due to the auditory demands of that particular environment.

* Correspondence: t.park@nhm.ac.uk

¹Department of Life Sciences, Natural History Museum, Cromwell Road, SW7 5BD London, UK

Full list of author information is available at the end of the article



Here, we attempt to detect the presence of convergent evolution in a sensory organ using quantitative methods. We use cochlear shape data from a broad sample of odontocetes to test for convergent evolution of echolocatory capabilities in toothed whales. We first identify convergent regimes within the Odontoceti, then quantify the degree of convergence and its strength, and test for statistical significance using a variety of methods. Results are consistent with strong selective pressures related to living in an oceanic habitat and diving to extreme depths leading to the convergent evolution of particular cochlear shapes in different lineages. In contrast, the river dolphins, which display convergent evolution in other aspects of their morphology [13–17] do not appear to have convergently evolved a distinct cochlear shape. Habitat type and diving ability appear to be strong selection pressures on cochlear shape.

Results

Geometric morphometrics

Principal components analysis (PCA) of 371 landmarks describing cochlear shape variation in 48 species of odontocete revealed that beaked whales and dolphins have the widest range of cochlear shape variation in PC1 and beaked whales and porpoises have the widest range of shape variation in PC2 (Fig. 1).

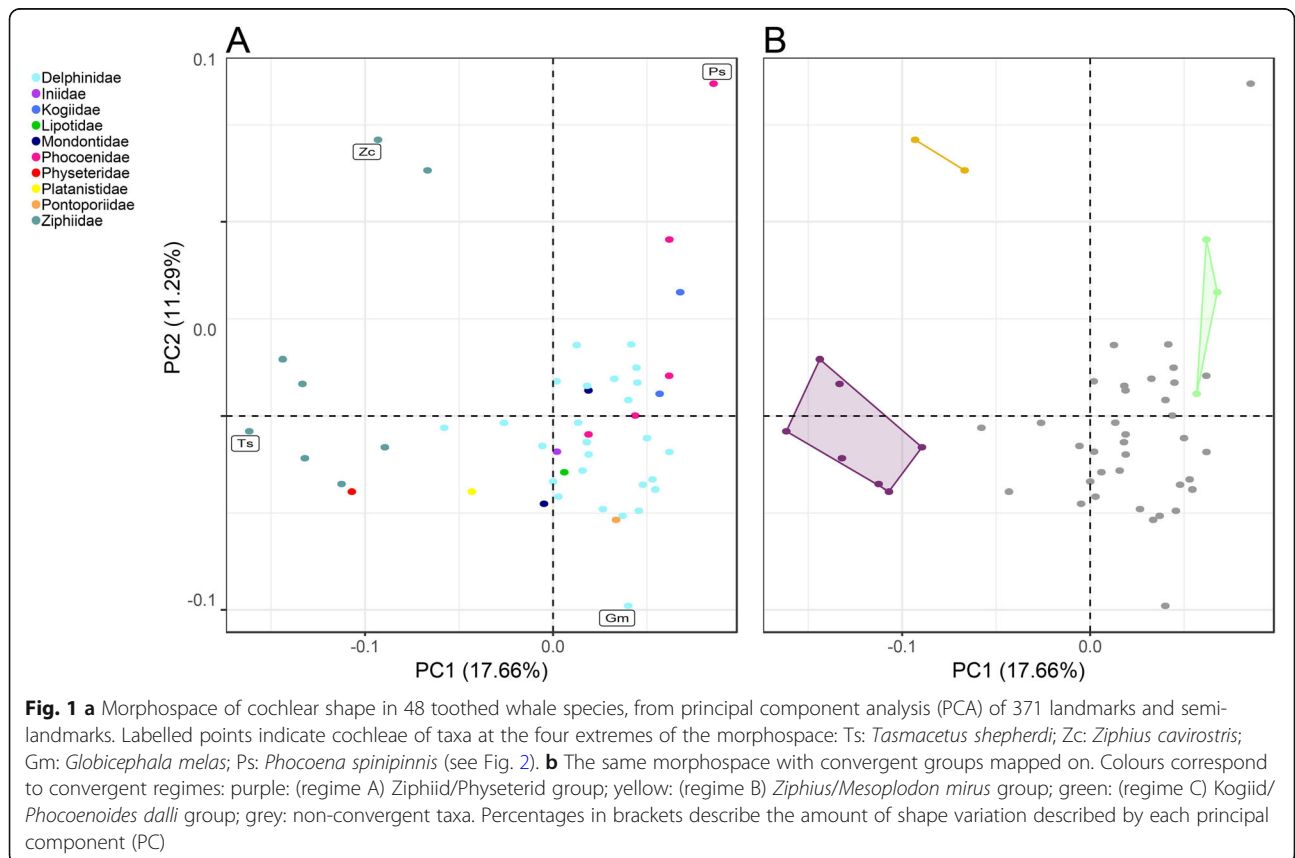
Principal component 1 (PC1) accounted for 17.66% of the cochlear shape variation (Fig. 1). The negative values of this axis represents cochleae with: 1) a radially expanded scala tympani (i.e. a tympanal recess); 2) a scala vestibuli that is transversely (radially) thinner along its length; 3) a larger fenestra vestibuli; and 4) a vestibular curve (sensu Luo & Marsh [18]) that does not extend as far dorsally. The positive values of this axis represents cochleae with: 1) a scala tympani that is not radially inflated; 2) a relatively thicker scala vestibuli; 3) a smaller fenestra vestibuli; and 4) a more dorsally extended vestibular curve. PC2 accounted for 11.29% of the cochlear shape variation. The negative values of this axis represent cochleae with an oval-shaped fenestra vestibuli with the long axis oriented approximately anteroposteriorly. The positive values of this axis represents cochleae with a circular fenestra vestibuli (Figs. 1 and 2).

Phylogenetic signal

We found a statistically significant phylogenetic signal in the PCs for cochlear shape ($K_{mult} = 0.3009$, p -value = 0.001).

Identifying convergent regimes

The SURFACE analysis identified a total of five distinct evolutionary regimes in the cochleae shape data, three of which were convergent (Figs. 1 and 3; Table 1). These



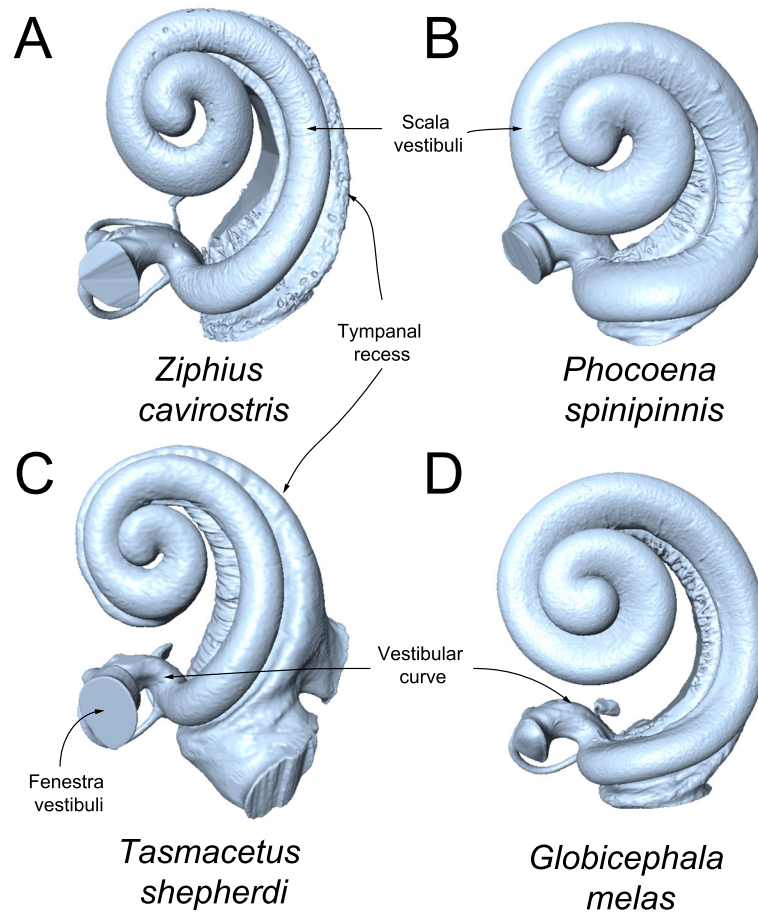


Fig. 2 Cochleae of example taxa near the extremes of the morphospace shown in Fig. 1 (not to scale): **a** Zc: *Ziphius cavirostris*; **b** Ps: *Phocoena spinipinnis*; **c** Ts: *Tasmacetus shepherdi*; **d** Gm: *Globicephala melas*

regimes were: 1) sperm whale (*Physeter macrocephalus*) and all other beaked whales (ziphiids; regime A; Figs. 1 and 3); 2) True's beaked whale (*Mesoplodon mirus*) and Cuvier's beaked whale (*Ziphius cavirostris*; regime B; Figs. 1 and 3); and 3) kogiids, dwarf sperm whale (*Kogia sima*) and pygmy sperm whale (*Kogia breviceps*), and Dall's porpoise (*Phocoenoides dalli*; regime C; Figs. 1 and 3). Despite generally being assumed to be convergent, the 'river dolphins' did not form a convergent regime.

We found the best model in SURFACE for explaining cochlear evolution was the multiplex Ornstein-Uhlenbeck (OU) model, which had an AICc score of -365.57 . The Brownian motion (BM) and single peak OU models had AICc scores of -173.88 and -312.98 respectively (Table 1). PC2 had much larger and smaller values for the rate of adaptation to optima (α) and the expected time to evolve halfway to an optimum ($t_{1/2}$), respectively.

Detecting significant levels of convergence

We used Stayton's C metrics (convergence metrics; see Methods) [20] to statistically test for convergence. In

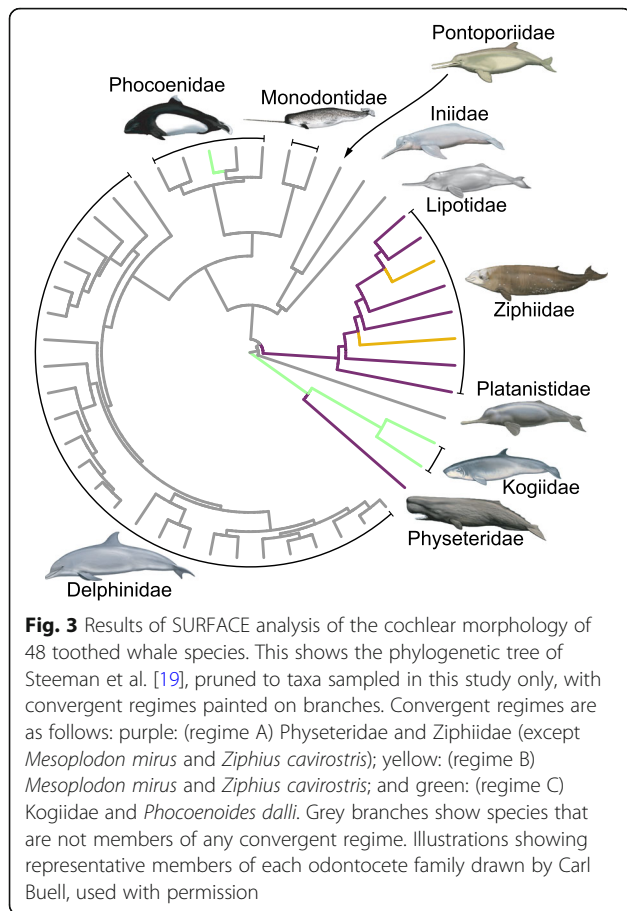
regimes A and B all C-metrics were significant, (Table 2) with C_1 values indicating that an average phenotypic distance of 35 and 21.6% has been closed by convergence for regimes A and B, respectively. Conversely, there were no statistically significant C-metrics in the regime C, with an average phenotypic distance of 21.1% closed by convergence. We did not find any statistically significant C-metrics in river dolphin cochleae.

Investigating the strength of convergence

None of the convergent regimes found in the SURFACE analysis had statistically significant Wheatsheaf index values (Table 3). Note this means only that the convergence is not unusually strong in these regimes, not that they are not convergent.

Investigating potential mechanisms for convergence

There was a significant association between being a member of regime A and living in an oceanic habitat and diving to extreme depths (> 1000 m i.e. 'very deep' dive type; Fig. 4). However, no other ecological



associations were significant after Bonferroni correction. Although species in the convergent regimes were overall significantly larger in body size than those not within a convergent regime (ANOVA: $F_{3,44} = 4.033$, p -value = 0.013), the species in the three convergent regimes did not have significantly different body sizes (ANOVA: $F_{2,9} = 3.239$, p -value = 0.087).

Discussion

In this study, we investigated convergent evolution in the cochlear shape of toothed whales. The aim was to detect convergent evolution in cochlear shape without any a priori information on which taxa might be convergent. Using a SURFACE analysis (bearing in mind the assumptions of independence in each trait; see Methods), we found three convergent phenotypic regimes that have evolved independently in different lineages, two of which were significantly convergent, i.e. more similar to each other than to their ancestors [20]. The first significant convergent regime (regime A) consists of the sperm whale and all the beaked whales sampled in this study, excluding True’s beaked whale (*Mesoplodon mirus*) and Cuvier’s beaked whale (*Ziphius cavirostris*). Regime A taxa share very similar ecologies. They inhabit oceanic regions, rarely venturing close to the shore. They are deep diving animals, capable of staying submerged for over an hour [21–23]. They are also suction feeders; teeth, if present are non-functional, unnecessary or are used for intraspecific interactions such as sexual displays (with the exception of *Tasmacetus*) [24–26]. The cochleae of the sperm whale

Table 1 Results of SURFACE analysis of 48 toothed whale species cochlear shapes

	Multipeak OU		OU1		BM	
Model outputs	Value		Value		Value	
AICc	− 366		− 313		− 174	
Phenotypic regimes	5		1		−	
Phenotypic regime shifts	8		1		−	
Convergent phenotypic regimes	3		−		−	
Convergent phenotypic regime shifts	6		−		−	
Convergence fraction	0.75		−		−	
Parameters	PC1	PC2	PC1	PC2	PC1	PC2
α	0.433	3.055	0.013	0.161	−	−
$t_{1/2}$	1.560	0.227	53.915	4.294	−	−
σ^2	0.001	0.005	0.000	0.001	0.000	0.000
θ_a	0.064	0.055	−0.032	0.003	−	−
θ_b	0.098	0.171	−	−	−	−
θ_c	−0.126	−0.011	−	−	−	−
θ_e	−0.079	0.134	−	−	−	−
θ_h	0.021	−0.015	−	−	−	−

Models were fitted to the cochlear shape described by principal component (PC) 1 and PC2. Multipeak Ornstein Uhlenbeck (OU): convergent OU model fitted by backward phase of SURFACE; OU1: single peak OU model; BM: Brownian motion model

Table 2 C₁ - C₄ convergence measures and *p*-values for each convergent regime

Regime	Variable	C1	C2	C3	C4
A	C-value	0.216	0.053	0.103	0.006
	<i>p</i> -value	0	0	0	0
B	C-value	0.350	0.116	0.201	0.132
	<i>p</i> -value	0.003	0	0	0
C	C-value	-0.211	-0.034	-0.071	-0.004
	<i>p</i> -value	0.999	0.999	0.999	0.999

P-values were derived from 1000 simulations to test the hypothesis that the observed values are greater than random simulations based on Brownian motion. Significant *p*-values are in bold

and extant beaked whales also have a tympanal recess, a feature not seen in other living odontocetes. The function of this feature, which is a radial expansion of the scala tympani, is still unknown (but see Park et al. [27] for possible explanations), but it is also present in baleen whales (except for balaenids) [28], confounding functional explanations related to the ecology of this convergent regime [29].

Functionally, the auditory pathway of sperm whales and beaked whales (as well as kogiids) are different to that of other odontocetes. They possess a singular middle ear type [30] where malleal morphology is distinct, the middle ear bones are relatively rigid and the tympanoperiotic complex is synotosed, all preventing bending and rotation of the earbones. Additionally, sperm whales and beaked whales also retain a bony connection of their earbones to the skull through the posterior process, unlike the ligamentous suspension system seen in other odontocetes [31], hinting at the existence of a bone conduction mechanism in these taxa.

The remaining two beaked whale taxa from this study, True's and Cuvier's beaked whales, form the second significantly convergent regime (regime B). It is unclear what separates these two species from those of the previous regime. They are thought to have the same deep-diving, suction feeding ecology as all other beaked whales; indeed, Cuvier's beaked whale has the greatest known dive depth of any cetacean (or mammal) of 2992 m [32]. Both taxa also have a tympanal recess and share the derived auditory pathway morphology described above. True's beaked whale is one of the most poorly

Table 3 Results of the Wheatshaf index analysis for each convergent regime

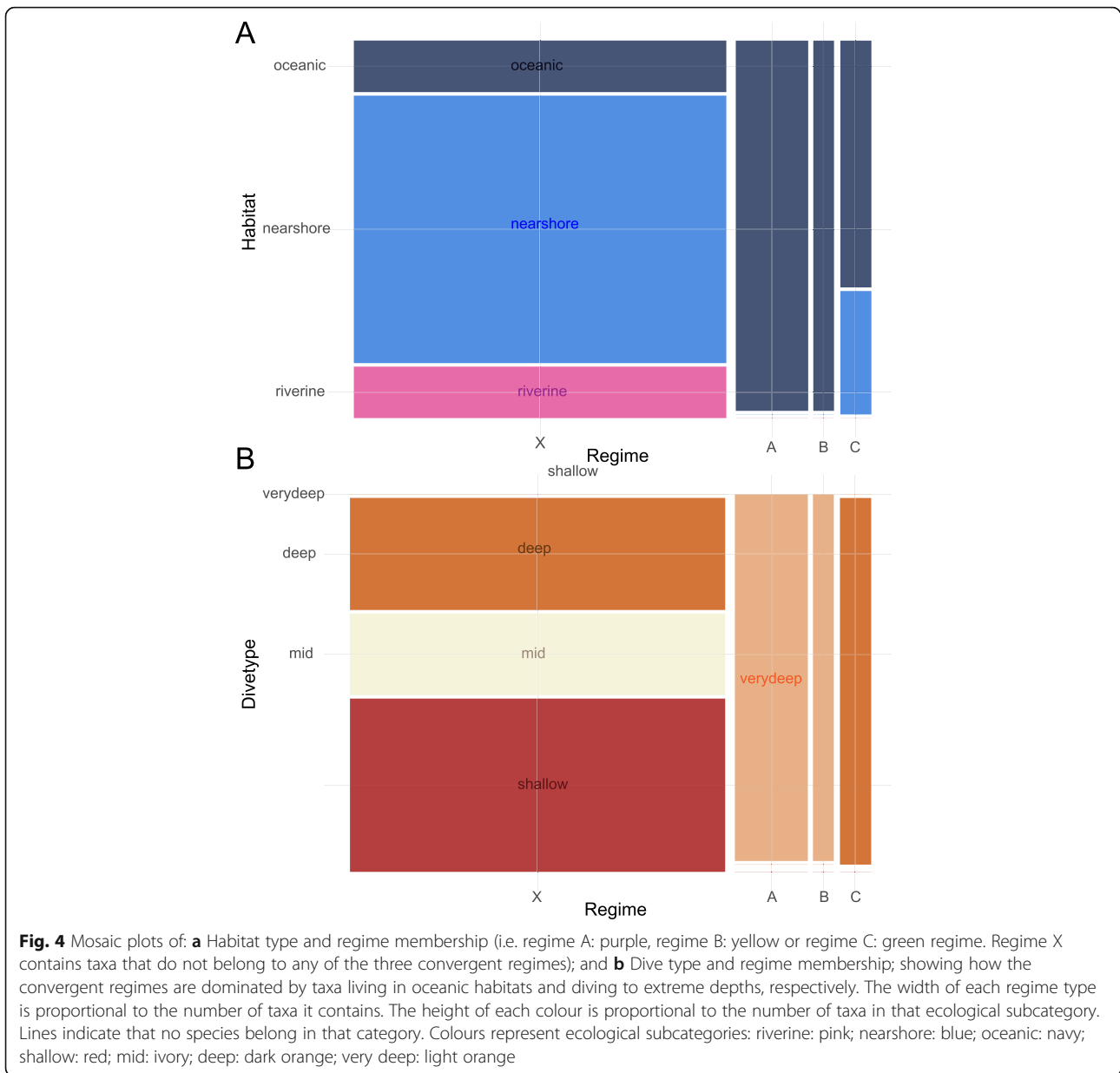
Regime	WI value	<i>p</i> -value	95% CI
A	1.112	0.955	1.054–1.256
B	1.432	0.46	1.390 - ∞
C	1.632	0.335	1.584–3.470

WI Wheatshaf index, CI 95% confidence intervals on WI. Note that the upper CI for regime B is infinity, because only two taxa are being used to perform the calculation resulting in a division by zero

known cetaceans, making comparisons of the ecology in this regime difficult.

The dwarf and pygmy sperm whales (*Kogia* spp.) and Dall's porpoise (*Phocoenoides dalli*), were unexpectedly recovered as a third convergent regime (regime C), although the convergence was not statistically significant. Nevertheless, an examination of their ecologies does reveal similarities. Kogiids are rarely sighted at sea, due to their preference for oceanic habitats [33–35]. Porpoises, conversely, generally prefer shallow waters over the continental shelf, with some species even living in rivers. Interestingly, *P. dalli* is one of only two exceptions to this trend, inhabiting deep oceanic waters, only coming close to shore when there are deep-water trenches present [36]. Additionally, Dall's porpoise is the largest member of the porpoise family, reaching lengths of up to 2.4 m, similar in size to at least the dwarf sperm whale (the pygmy sperm whale is larger, with a minimum size of 2.7 m) [36]. All species in this regime are suction feeders; the pygmy sperm whale has been experimentally observed employing rapid gape and gular kinematics to generate strong suction [37, 38]. Dall's porpoise has tiny, non-functional teeth, and therefore instead relies on suction to acquire prey, similar to other porpoises [14, 39]. Interestingly, kogiids use narrow band high frequency echolocation signals, the same as porpoises, differing from their close relatives, sperm whales that use multipulsed signals [40]. Both pygmy and dwarf sperm whales are thought to be capable of very deep dives, with observed dives of over 50 min duration recorded previously [41]. Maximum dive depth is unknown, but some prey items are only known to inhabit depths of 500–1300 m [42, 43]. Similarly, the maximum dive depth of Dall's porpoise is unknown (Hanson & Baird [44] observed a dive of 94 m), but the abundance of deep-water prey in its diet and physiological factors such as a high blood oxygen content suggest that it also dives to great depths [45]. The convergence of cochlear shape with pygmy and dwarf sperm whales also adds evidence to the hypothesis that Dall's porpoise is capable of diving considerably deeper than has been previously recorded. However, the two genera differ in the morphology of their auditory pathway, with pygmy and dwarf sperm whales sharing the same morphology as beaked whales and sperm whales whereas Dall's porpoise possesses the ligamentous system seen in all other odontocetes; only the morphology of the cochlea appears to be convergent.

The two statistically significant regimes found (A and B) above suggest there is a strong selection pressure on taxa that have an oceanic ecology characterized by diving to extreme depths. This is further corroborated by the significant associations of living in oceanic habitats, diving to extreme depths and belonging to the regime A. Despite all taxa in this regime also being specialist



suction feeders, suction feeding occurs across odontocetes so is therefore not associated with any single convergent regime. Larger odontocetes have a larger maximum prey detection range and inspection range [40], which is likely to be very important for sperm whales and beaked whales, who traverse large distances in search of patchy prey [46, 47]. The morphology of these convergent regimes also appears to have converged rapidly, as shown by the respective large and small values for rate of adaptation to an optimum (α) and the expected time to evolve halfway to an optimum ($t_{1/2}$) of PC2 (representing fenestra vestibuli shape) in the SURFACE analysis (Table 1). This indicates that the fenestra vestibuli converged on the same morphology more rapidly than other aspects of cochlear morphology. Sound

initially reaches the cochlea through this opening, potentially causing the morphology to change more rapidly than elsewhere. Additional selection pressures could potentially come from the physical properties of the water itself. The speed of sound in water depends on the temperature, salinity, depth and time from source. Sound velocity decreases with temperature until it reaches its minimum around 1000 m depth. At this point sound velocity begins to increase with depth again due to the increasing pressure, eventually becoming faster than surface speeds around 2500 m depth [48], depths that only sperm whales and beaked whales are capable of reaching. The high pressure may also have an influence on the hydrodynamics of the fluids of the inner ear, resulting in the cochlear

morphologies seen, although well-developed vascular structures in the pterygoid sinus are thought to maintain pressures surrounding the ear region [49, 50]. It is therefore possible that the convergence seen in cochlear morphology between sperm whales and beaked whales is an adaptation for dealing with the particular acoustic environment found at these depths, although it is currently unclear how the mechanism would work. It is also likely that the extreme environment at these depths has driven convergent evolution in other marine lineages e.g. the independent evolution of bioluminescence in deep-sea fish, cnidarians and cephalopods [51]. It is also entirely possible that there is no underlying functional or ecological mechanism behind these similarities; not all traits are adaptive [52].

Previous analyses of convergent evolution in odontocetes have focused on the morphological similarity of the distantly related 'river dolphin' genera, *Platanista*, *Lipotes*, *Inia* and *Pontoporia* [13–17, 53]. Interestingly, our results detected no significant convergence in river dolphin cochleae, despite previous results showing that the cochleae of freshwater cetaceans separate out from marine taxa in a canonical variate analysis [7]. It is possible that there is convergence among a subsample of the 'river dolphin' genera, but this was not tested in this study. Furthermore, our increased sample size includes additional taxa that spend some or all of their time in rivers, which may prevent a convergent signal being detected.

More generally, it is clear from our study that cochlear shape is not dominated by a single or even several, major axes of variation (PC1 accounts for only 17.66%). Variation is widely spread among many PCs. Caution should therefore be used when interpreting relationships between PC scores and changes in cochlear shape. Costeur et al. [7] also found similar patterns when using highly dimensional data. This contrasts with studies on skull shape, where length and width are often the primary sources of variation (e.g. [53]).

Potential caveats of this study are the assumptions of independent rates of adaptation and diffusion in the OU models used in the SURFACE analysis [54], with the resulting use of only the first two PCs for the analyses. It is likely that analyses using more PCs, or indeed all shape variables, would reveal different patterns. However, at present there is no suitable method for this kind of highly dimensional data. Additionally, we may have found different results if we had manually selected groups of taxa to test for convergence a priori, rather than using the approach we used here. Another issue was that obtaining ecological data on these reclusive animals, in particular for the deepest diving odontocetes, is incredibly difficult. Therefore, our ecological characterizations are necessarily broad. More accurate information on variables such as dive depth may help to narrow

down the selective pressures driving inner ear evolution. In future, the inclusion of fossil taxa may also identify convergent evolution over even longer timescales than that found here.

Conclusions

Previously, morphological convergence in vertebrates has been investigated using observational evidence e.g. [55], skull shape and linear morphometric measurements e.g. Mahler et al. [56]; Esquerre & Keogh [57]; Page & Cooper [17]; Morris et al. [58]; or qualitative comparisons e.g. [59]. Whilst the cochlea has been shown to demonstrate convergence at the genetic level in prior studies on echolocating mammals [60–63], here we demonstrate the usefulness of the cochlea as a means of quantitatively testing for morphological convergence. This novel use of the cochlea, enabled by the increased ease of access to high resolution X-ray tomography facilities, adds to its great value in comparative studies, having previously been used as an indicator of hearing ability [5, 8], phylogenetic position [64] and habitat preference [7, 65]. The extraordinary demands of accessing, navigating, communicating and searching for prey in the deep ocean strongly constrains the possible range of phenotypes that can be expressed. We hypothesise that this extreme acoustic environment selects for a particular cochlear shape, one that we demonstrate has evolved convergently in disparate odontocete lineages. Future studies should aim to incorporate fossil taxa into their samples with the possibility of using these methods (in addition to seeking methodological improvements in dealing with highly dimensional data) to reconstruct their ecology and investigate the timing of convergent evolution in echolocatory capabilities driven by geographic and oceanic changes during the past 30 million years.

Methods

Data collection

We obtained microCT scans of the periotics - the bone containing the inner ear - of 48 species (comprising 94% of extant genera) of odontocetes by imaging osteological specimens from museum collections (see Additional file 1). Using this data, we reconstructed 3D models of the inner ears using the segmentation and thresholding editors in Avizo 9.0 [66], and then cleaned the resulting 3D models using Geomagic Wrap [67]. Next we landmarked the digital models with 40 sliding semilandmark curves comprising a total of 371 landmarks (see Additional file 1), using IDAV Landmark [68]. The position of these curves followed the protocols of Costeur et al. [7], using only the curves from the cochlea and the vestibular aqueduct because 1) the focus of this study is hearing ability, i.e. echolocation rather than balance; and 2) the semi-circular canals are not phylogenetically or ecologically

informative in odontocetes [7]. Landmarks were placed by a single investigator (TP) to avoid multi-user bias in placement. Finally we exported coordinates from the landmarked models as .pts files from IDAV Landmark [68]. Terms of cochlear orientation refer to the spiral itself rather than in relation to the body of the animal.

For phylogenetic analyses we used the time-calibrated tree of Steeman et al. [19], a robust molecular phylogeny derived from mitochondrial and nuclear markers, pruned to the 48 taxa sampled in this study.

Geometric morphometrics

We performed all geometric morphometric analyses in R version 3.4.3 [69], using the R package GEOMORPH [70]. First, we used Generalised Procrustes Analysis (GPA) to remove the effects of position, scale and orientation. The semilandmarks were 'slid' along their tangent vectors between adjacent semilandmarks until their positions minimised the shape difference between specimens (using the Procrustes distance criterion), to reduce the effect of their initially arbitrary placement [71–73]. We then performed a principal component analysis (PCA) on the resulting Procrustes coordinates using the 'plotTangentSpace' function; and use these principal components (PCs) in all further analyses.

Phylogenetic signal

To determine whether close relatives tend to have more similarly shaped cochlea than more distant relatives, we estimated phylogenetic signal in our PC scores using the K_{mult} statistic. This method is designed to deal with high-dimensional multivariate data (e.g. landmark configurations) by exploiting the statistical equivalency between covariance-based and distance-based approaches for Euclidean data [74]. We calculated this statistic using all PC scores.

Identifying convergent regimes

In this study, we aimed to identify odontocete cochlea that have convergently evolved a similar shape without defining groups as convergent a priori. To identify convergent regimes in odontocete cochlea we used the R package SURFACE [75]. The SURFACE approach uses an Ornstein-Uhlenbeck (OU) process – a random walk where trait values are pulled back towards an adaptive peak/long term mean – to identify groups that share a similar adaptive peak, and can hence be defined as belonging to the same convergent regime Mahler et al. [56]. A SURFACE analysis is split into a forward phase and a backward phase to firstly locate regime shifts on a tree, and secondly identify whether the shifts are convergent. In the forward phase, SURFACE starts with the simplest model where the entire clade is in a single adaptive regime. SURFACE then adds regime shifts one

at a time to the origin of each branch, and the branch with the lowest small sample size corrected Akaike Information Criterion (AICc) score is retained. Regime shifts continue to be added until there is no change in AICc (i.e. change in AICc is 0). In the backward phase, the final model from the forward phase is simplified by pairwise collapses of regimes into one convergent regime. If this improves the AICc score, the model simplification continues using this model. Regime shifts continue to be collapsed until there is no change in AICc. This model represents the final set of convergent regimes. We then compared the fit of this model to a Brownian motion (BM) model and a OU model with a single peak (OU1) to ensure that these simpler models did not fit better with our shape data (i.e. PC scores).

We note that Zelditch et al. [54] caution against using SURFACE with high-dimensional data because it assumes that each trait has an independent rate of adaptation (α) and diffusion (σ^2). Ingram and Mahler [75] also suggest that between two and four traits should be used, as large numbers of traits may be difficult to interpret biologically and are unlikely to be involved in biological adaptation. To minimise these effects, here we use the first two principal components (see Additional file 1 for results of analyses using 3 PCs and 4 PCs) as the traits for our SURFACE analysis. Note that, we use our SURFACE analyses to identify putatively convergent groups (or regimes) only; we do not use SURFACE alone to define these groups as convergent.

Detecting significant levels of convergence

Using the convergent regimes identified using SURFACE, we next used the measures proposed by Stayton [20] in the R package CONVEVOL to quantify the degree of convergence in each putatively convergent group and test for statistical significance. We also additionally tested for convergence in 'river dolphin' (*Platanista*, *Lipotes*, *Inia* and *Pontoporia*) cochlea as previous analyses had found morphological convergence in skull shape and association of cochlear shape with habitat preference [7, 17]. The C-metrics ($C_1 - C_4$), are distance-based measures that define convergence as where *two or more taxa have evolved to be more similar to one another than their ancestors were to each other* [20, 76]. C_1 represents the proportion of the maximum phenotypic distance between two convergent lineages that has been reduced by subsequent evolution (i.e. relative amount of convergence), ranging from 0 to 1 and increasing as the degree of convergence increases. The maximum phenotypic distance is estimated using ancestral state estimation under a BM model. C_2 is similar to C_1 , but is not scaled so the magnitude of the evolutionary change can be taken into account (i.e. absolute amount of convergence). C_3 and C_4 standardise C_2 by dividing it by the

total amount of evolution that has taken place in the clade containing the convergent taxa and the whole phylogeny respectively. We used the first 30 PCs to calculate these values as this represents 95% of the total variation in cochlea shape. Significance for these metrics is calculated by simulating evolutionary changes 1000 times via BM using the phylogeny and a variance-covariance matrix derived from the observed data (i.e. the PC scores) as the rate of evolution. $C_1 - C_4$ are calculated for each simulated dataset, creating an expected distribution of each metric (the higher the metric the stronger the convergence); the p -value is the proportion of times the simulated value exceeds the observed value.

Investigating the strength of convergence

Stayton's [20] C-metrics measure the significance of convergence, but do not measure strength of convergent evolution, therefore we calculate this using the Wheat-sheaf index in the WINDEX R package [77], using the convergent regimes identified in the SURFACE analysis as the focal groups. The Wheat-sheaf index is calculated by dividing the mean corrected phenotypic distance matrix for pairwise comparisons between all species in the phylogeny, by the mean corrected phenotypic distance for pairwise comparisons between focal species only. As with the C-metric analyses, the first 30 PCs were used. Additionally, 95% confidence intervals (CI) were obtained by jack-knifing the data and calculating the intervals from the resulting distribution. Confidence intervals are given because the calculation of the Wheat-sheaf Index is not amenable to multiple, independent sampling (it uses information from the entire sample). We also obtained a p -value for the Wheat-sheaf index values by bootstrapping the trait values (i.e. PC scores) at the tips of the phylogeny and recalculating the Wheat-sheaf index to give a distribution of values. The proportion of these bootstrapped values that are greater than or equal to the observed Wheat-sheaf index is the p -value.

Investigating potential mechanisms for convergence

Finally, once convergence regimes were identified and quantified, we also wanted to determine whether particular ecological factors were correlated with membership of these regimes to highlight potential drivers underlying the convergence. Significant correlations may be indicative of selection pressures related to these ecological factors driving convergence in cochlear morphology. To do this we collated ecological data on habitat (riverine, nearshore, oceanic), diet (generalist, fish, cephalopods), feeding behaviour (raptorial, suction) and dive type (shallow (estimated max dive depth ≤ 100 m), mid (estimated max dive depth ~ 500 m), deep (estimated max dive depth ~ 1000 m), very deep (estimated max dive depth > 1000 m)) for each species using Mittermeier & Wilson [78], Jefferson

et al. [79], McCurry et al. [53], Hocking et al. [26, 80] and multiple additional sources (see Additional file 1).

We tested for an association among ecological categories and each convergent regime using χ^2 tests. To deal with species that belonged to multiple categories, for example nearshore and oceanic, we repeated the analyses with the species first analysed as nearshore then as oceanic. This led to six χ^2 tests for each regime, so we corrected the resulting p -values using a Bonferroni correction to reduce the likelihood Type I error due to multiple testing. We also investigated whether the regimes contained species with significantly different body sizes using analysis of variance (ANOVA) of natural log transformed body masses.

Supplementary information

Supplementary information accompanies this paper at <https://doi.org/10.1186/s12862-019-1525-x>.

Additional file 1: Table S1. Specimens used in this study. Institutional abbreviations: AMNH, American Museum of Natural History, New York, USA; IRNSBV, Belgian Royal Institute of Natural Sciences, Brussels, Belgium; NMB, Naturhistorisches Museum Basel, Basel, Switzerland; NHMUK, Natural History Museum, London, England; NMVC, Museums Victoria, Melbourne, Australia. **Figure S1.** Cochlea of *Cephalorhynchus commersonii* (NHMUK1952.6.20.4.2) in: (A) vestibular; (B) anterior; (C) dorsal; and (D) lateral views, showing placement of landmarks for this study. **Table S2.** Results of χ^2 analysis. χ^2 : chi-squared value; df: degrees of freedom; bc: Bonferroni corrected p -value. **Table S3.** Results of the SURFACE analysis using 3 PCs. Parameters were found by the evolutionary models fitted to the evolution of cochlear shape in toothed whales described by PC1, PC2 and PC3. **Table S4.** Results of the SURFACE analysis using 4 PCs. Parameters were found by the evolutionary models fitted to the evolution of cochlear shape in toothed whales described by PC1, PC2, PC3 and PC4. **Table S5.** $C_1 - C_4$ convergence measures and p -values using 3 PCs. P -values were derived from 1000 simulations to test the hypothesis that the observed values are greater than random simulations based on Brownian motion. Significant values in bold. **Table S6.** $C_1 - C_4$ convergence measures and p -values using 4 PCs. P -values were derived from 1000 simulations to test the hypothesis that the observed values are greater than random simulations based on Brownian motion. Significant values in bold. **Table S7.** Results of the Wheat-sheaf index analysis using 3 PCs. WI: Wheat-sheaf index. **Table S8.** Results of the Wheat-sheaf index analysis using 4 PCs. WI: Wheat-sheaf index. **Figure S2.** Cladogram showing the phylogenetic relationships of the taxa in this study.

Abbreviations

AIC: Akaike Information Criterion; ANOVA: Analysis of variance; BM: Brownian motion; C-metric: Convergence metric; GPA: Generalised Procrustes analysis; OU: Ornstein-Uhlenbeck; PC: Principal component; PCA: Principal component analysis; $t_{1/2}$: Expected time to evolve halfway to an optimum; α : Rate of adaptation; σ^2 : Rate of diffusion

Acknowledgements

We would like to thank: Oliver Lambert (IRNSB), Gabriel Aguirre Fernandez (UZH), Brett Clark and Vincent Fernandez (NHM), Alistair Evans (MU) and Georg Schulz and Bert Müller (BSCUB) for scanning several of the specimens in this study; Richard Sabin and Roberto Portela Miguez (NHM), Erich Fitzgerald and Karen Roberts (NMV), Nancy Simmons, Neil Duncan and Eileen Westwig (AMNH) for access to specimens; Anjali Goswami (NHM), Ryan Felice (UCL) and Morgan Hill (AMNH) for access to and advice on using software; Flavie Laurens (UB) for reconstruction of several of the inner ear models; Carl Buell for permitting the use of his illustrations; and the editor and two anonymous reviewers for their helpful comments and suggestions.

Authors' contributions

T.P. & N.C. conceived and planned the project and analysed the data. T.P., B.M., L.C. and C.G. collected the data. All authors contributed to preparation of the manuscript. All authors have read and approved the manuscript.

Funding

This research was supported by a Marie Skłodowska-Curie Individual Fellowship (748167/ECHO) to T.P. and National Science Foundation (U.S.) DEB-1257572 and Frick Postdoctoral Fellowship, Division of Paleontology, AMNH to C.G. The funding bodies played no role in the design of the study and collection, analysis, and interpretation of data and in writing the manuscript.

Availability of data and materials

All data are available on the NHM Data Portal (Park et al. 2018; <https://doi.org/10.5519/0082968>), and all code needed to reproduce these analyses is available on GitHub at <https://github.com/travispark/Odontocete-inner-ear-convergence>. [We will add a Zenodo DOI when the paper is accepted].

Ethics approval and consent to participate

Not applicable.

Consent for publication

Not applicable.

Competing interests

The authors declare that they have no competing interests.

Author details

¹Department of Life Sciences, Natural History Museum, Cromwell Road, SW7 5BD London, UK. ²Naturhistorisches Museum Basel, Augustinergasse 2, 4001 Basel, Switzerland. ³Naturhistorisches Museum Wien, Burgring 7, 1010 Vienna, Austria. ⁴Division of Paleontology, American Museum of Natural History, Central Park West at 79th Street, New York, NY 10024, USA. ⁵Laboratory Paleontology Evolution Paleoeosystems Paleoprimatology (PALEVOPRIM) – UMR 7262, CNRS-INEE/University of Poitiers, 86073 Poitiers Cedex 9, France.

Received: 15 April 2019 Accepted: 1 October 2019

Published online: 24 October 2019

References

- Committee on Taxonomy. List of marine mammal species and subspecies. 2018. <https://www.marinemammalscience.org/species-information/list-marine-mammal-species-subspecies/>. Accessed 1 Sep 2018.
- Cranford TW, Amundin M, Norris KS. Functional morphology and homology in the Odontoceti nasal complex implications for sound generation. *J Morphol*. 1996;228:223–85.
- Nummela S, Thewissen JGM, Bajpai S, Hussain T, Kumar K. Sound transmission in archaic and modern whales: anatomical adaptations for underwater hearing. *Anat Rec*. 2007;290:716–33.
- Ketten DR, Wartzok D. Three-dimensional reconstructions of the dolphin EAR. In: Sensory abilities of cetaceans. Boston: Springer US; 1990. p. 81–105.
- Ketten DR. Cetacean ears. In: Au WWL, Popper AN, Fay RR, editors. Hearing by whales and dolphins. New York: Springer; 2000. p. 43–108.
- Gutstein CS, Figueroa-Bravo CP, Pyenson ND, Yury-Yañez RE, Cozzuol MA, Canals M. High frequency echolocation, ear morphology, and the marine-freshwater transition: a comparative study of extant and extinct toothed whales. *Palaeogeogr Palaeoclimatol Palaeoecol*. 2014;400:62–74.
- Costeur L, Grohé C, Aguirre-Fernández G, Ekdale E, Schulz G, Müller B, et al. The bony labyrinth of toothed whales reflects both phylogeny and habitat preferences. *Sci Rep*. 2018;8:7841.
- Park T, Fitzgerald EMG, Evans AR. Ultrasonic hearing and echolocation in the earliest toothed whales. *Biol Lett*. 2016;12:20160060.
- Mourlam MJ, Orliac MJ. Infrasonic and Ultrasonic Hearing Evolved after the Emergence of Modern Whales. *Curr Biol*. 2017;27:1776–81 e9.
- Fordyce RE. *Simocetus rayi* (Odontoceti: Simocetidae, new family): a bizarre new archaic Oligocene dolphin from the eastern North Pacific. *Smithson Contrib Paleobiol*. 2002;93:185–222.
- Geisler JH, Colbert MW, Carew JL. A new fossil species supports an early origin for toothed whale echolocation. *Nature*. 2014;508:383–6.
- Churchill M, Martinez-Caceres M, de Muizon C, Mnieckowski J, Geisler JH. The origin of high-frequency hearing in whales. *Curr Biol*. 2016;26:2144–9.
- Hamilton H, Caballero S, Collins AG, Brownell RL. Evolution of river dolphins. *Proc R Soc B Biol Sci*. 2001;268:549–56.
- Werth AJ. Mandibular and dental variation and the evolution of suction feeding in Odontoceti. *J Mammal*. 2006;87:579–88.
- Ruiz-Garcia M, Shostell JM. *Biology, Evolution, and Conservation of River Dolphins Within South America and Asia*. New York: Nova Science Publishers; 2009.
- Barroso C, Cranford TW, Berta A. Shape analysis of odontocete mandibles: functional and evolutionary implications. *J Morphol*. 2012;273:1021–30.
- Page CE, Cooper N. Morphological convergence in 'river dolphin' skulls. *PeerJ*. 2017;5:e4090.
- Luo Z, Marsh K. Petrosal (periotic) and inner ear of a Pliocene kogiine whale (Kogiinae, Odontoceti): implications on relationships and hearing evolution of toothed whales. *J Vertebr Paleontol*. 1996;16:328–48.
- Steeman ME, Hebsgaard MB, Fordyce RE, Ho SYW, Rabosky DL, Nielsen R, et al. Radiation of extant cetaceans driven by restructuring of the oceans. *Syst Biol*. 2009;58:573–85.
- Stayton CT. The definition, recognition, and interpretation of convergent evolution, and two new measures for quantifying and assessing the significance of convergence. *Evolution (N Y)*. 2015;69:2140–53.
- Watkins WA, Daher MA, Fristrup KM, Howald TJ, Di Sciara GN. Sperm whales tagged with transponders and tracked underwater by sonar. *Mar Mammal Sci*. 1993;9:55–67.
- Hobson RP, Martin AR. Behaviour and dive times of Arnouxys beaked whales, < i>Berardius amuxii</i>, at narrow leads in fast ice. *Can J Zool*. 1996;74:388–93.
- Hooker SK, Baird RW. Deep-diving behaviour of the northern bottlenose whale, *Hyperoodon ampullatus* (Cetacea: Ziphiidae). *Proc R Soc London Ser B Biol Sci*. 1999;266:671–6.
- Werth AJ. Functional morphology of the sperm whale (*Physeter macrocephalus*) tongue, with reference to suction feeding. *Aquat Mamm*. 2004;30:405–18.
- Dalebout ML, Steel D, Baker CS. Phylogeny of the beaked whale genus *Mesoplodon* (Ziphiidae: Cetacea) revealed by nuclear introns: implications for the evolution of male tusks. *Syst Biol*. 2008;57:857–75.
- Hocking DP, Marx FG, Park T, Fitzgerald EMG, Evans AR. A behavioural framework for the evolution of feeding in predatory aquatic mammals. *Proc R Soc B Biol Sci*. 2017;284:20162750.
- Park T, Fitzgerald EMG, Evans AR. The Tympanal recess of the cetacean cochlea: function and evolution. *Acoust Aust*. 2017;45:273–8.
- Park T, Evans AR, Gallagher SJ, Fitzgerald EMG. Low-frequency hearing preceded the evolution of giant body size and filter feeding in baleen whales. *Proc R Soc B Biol Sci*. 2017;284:20162528.
- Park T, Marx FG, Fitzgerald EMG, Evans AR. The cochlea of the enigmatic pygmy right whale *Caperea marginata* informs mysticete phylogeny. *J Morphol*. 2017;278:801–9.
- Nummela S. Hearing in aquatic mammals. In: Thewissen JGM, Nummela S, editors. Sensory evolution on the threshold : adaptation in secondarily aquatic vertebrates. San Diego: University of California Press; 2008. p. 211–24.
- Cranford TW, Krysl P. Fin whale sound reception mechanisms: skull vibration enables low-frequency hearing. *PLoS One*. 2015;10:1–17.
- Schorr GS, Falcone EA, Moretti DJ, Andrews RD. First long-term behavioral records from Cuvier's beaked whales (*Ziphius cavirostris*) reveal record-breaking dives. *PLoS One*. 2014;9:e92633.
- Willis PM, Baird RW. Status of the dwarf sperm whale (*Kogia simus*) in Canada. *Can Field-Naturalist*. 1998;112:114–25.
- Bloodworth BE, Odell DK. *Kogia breviceps* (Cetacea: Kogiidae). *Mamm Species*. 2008;819:1–12.
- McAlpine DF. Pygmy and dwarf sperm whales. In: Wursig B, Thewissen JGM, Kovacs KM, editors. *Encyclopedia of Marine Mammals*. Third. London: Academic Press; 2018. p. 786–8.
- Jefferson TA. Family Phocoenidae (porpoises). In: Mittermeier RA, Wilson DE, editors. *Handbook of the mammals of the world: sea mammals*. Barcelona: Lynx Edicions; 2014. p. 528–47.
- Bloodworth B, Marshall CD. Feeding kinematics of *Kogia* and *Tursiops* (Odontoceti: Cetacea): characterization of suction and ram feeding. *J Exp Biol*. 2005;208:3721–30.
- Bloodworth BE, Marshall CD. A functional comparison of the hyolingual complex in pygmy and dwarf sperm whales (*Kogia breviceps* and *K. sima*), and bottlenose dolphins (*Tursiops truncatus*). *J Anat*. 2007;211:78–91.

39. Kastelein RA, Staal C, Terlouw A, Muller M. Pressure changes in the mouth of a feeding harbour porpoise (*Phocoena phocoena*). In: *The biology of the harbour porpoise*. Woerden: De Spil Publishers; 1997. p. 279–91.
40. Jensen FH, Johnson M, Ladegaard M, Wisniewska DM, Madsen PT. Narrow Acoustic Field of View Drives Frequency Scaling in Toothed Whale Biosonar. *Curr Biol*. 2018;28:3878–85 e3.
41. Barlow J, Forney KA, Von Saunder A, Urbán-Ramírez J. A report of cetacean acoustic detection and dive interval studies (CADDIS) conducted in the southern Gulf of California. NOAA Technical Memorandum, NOAA-TM-NMFS-SWFSC-250. US Department of Commerce, National Oceanic and Atmospheric Administration, National Marine Fisheries Service, Southwest Fisheries Science Center. 1997. p. 48.
42. Maigret J, Robineau D. Le genre *Kogia* (Cetacea, Physteridae) sur les côtes du Sénégal. *Mammalia*. 1981;45:199–204.
43. Nagorsen D. *Kogia simus*. *Mamm Species*. 1985;239:1–6.
44. Hanson MB, Baird RW. Dall's porpoise reactions to tagging attempts using a remotely-deployed suction-cup tag. *Mar Technol Soc J*. 1998;32:18–23.
45. Ridgway SH, Johnston DG. Blood Oxygen and Ecology of Porpoises of Three Genera. *Science*. 1966;151:456–8.
46. Madsen PT, de Soto NA, Arranz P, Johnson M. Echolocation in Blainville's beaked whales (*Mesoplodon densirostris*). *J Comp Physiol A Neuroethol Sensory Neural Behav Physiol*. 2013;199:451–69.
47. Fais A, Aguilar Soto N, Johnson M, Pérez-González C, Miller PJO, Madsen PT. Sperm whale echolocation behaviour reveals a directed, prior-based search strategy informed by prey distribution. *Behav Ecol Sociobiol*. 2015;69:663–74.
48. Urlick RJ. Principles of underwater sound for engineers. New York: Tate McGraw-Hill Education; 1983.
49. Costidis AM, Rommel SA. The extracranial arterial system in the heads of beaked whales, with implications on diving physiology and pathogenesis. *J Morphol*. 2016;277:5–33.
50. Costidis AM, Rommel SA. The extracranial venous system in the heads of beaked whales, with implications on diving physiology and pathogenesis. *J Morphol*. 2016;277:34–64.
51. Waldenmaier HE, Oliveira AG, Stevani CV. Thoughts on the diversity of convergent evolution of bioluminescence on earth. *Int J Astrobiol*. 2012;11:335–43.
52. Gould SJ, Lewontin RC. The spandrels of san Marco and the Panglossian paradigm: a critique of the adaptationist programme. *Proc R Soc London Biol Sci*. 1979;205:581–98.
53. McCurry MR, Evans AR, Fitzgerald EMG, Adams JW, Clausen PD, McHenry CR. The remarkable convergence of skull shape in crocodylians and toothed whales. *Proc R Soc B Biol Sci*. 2017;284:20162348.
54. Zelditch ML, Ye J, Mitchell JS, Swiderski DL. Rare ecomorphological convergence on a complex adaptive landscape: body size and diet mediate evolution of jaw shape in squirrels (Sciuridae). *Evolution (N Y)*. 2017;71:633–49.
55. Vater M, Kössl M. Comparative aspects of cochlear functional organization in mammals. *Hear Res*. 2011;273:89–99.
56. Mahler DL, Ingram T, Revell LJ, Losos JB. Exceptional Convergence on the Macroevolutionary Landscape in Island Lizard Radiations. *Science*. 2013;341:292–5.
57. Esquerré D, Scott KJ. Parallel selective pressures drive convergent diversification of phenotypes in pythons and boas. *Ecol Lett*. 2016;19:800–9.
58. Morris PJR, Cobb SNF, Cox PG. Convergent evolution in the Euarchopterygians. *Biol Lett*. 2018;14:20180366.
59. Neenan JM, Reich T, Evers SW, Druckenmiller PS, Voeten DFAE, Choiniere JN, et al. Evolution of the Sauropterygian Labyrinth with Increasingly Pelagic Lifestyles. *Curr Biol*. 2017;27:3852–8 e3.
60. Li Y, Liu Z, Shi P, Zhang J. The hearing gene *Prestin* unites echolocating bats and whales. *Curr Biol*. 2010;20:55–6.
61. Liu Y, Cotton JA, Shen B, Han X, Rossiter SJ, Zhang S. Convergent sequence evolution between echolocating bats and dolphins. *Curr Biol*. 2010;20:53–4.
62. Liu Z, Qi FY, Zhou X, Ren HQ, Shi P. Parallel sites implicate functional convergence of the hearing gene *prestin* among echolocating mammals. *Mol Biol Evol*. 2014;31:2415–24.
63. Parker J, Tsagkogeorga G, Cotton JA, Liu Y, Provero P, Stupka E, et al. Genome-wide signatures of convergent evolution in echolocating mammals. *Nature*. 2013;502:228–31.
64. Mennecart B, DeMiguel D, Bibi F, Rössner GE, Métais G, Neenan JM, et al. Bony labyrinth morphology clarifies the origin and evolution of deer. *Sci Rep*. 2017;7:1–11.
65. Grohé C, Tseng ZJ, Lebrun R, Boistel R, Flynn JJ. Bony labyrinth shape variation in extant Carnivora: a case study of Musteloidea. *J Anat*. 2016;228:366–83.
66. Visualization Sciences Group—a FEI Company. Avizo: 3D analysis software for scientific and industrial data, standard edition. 2016.
67. 3D Systems. Geomagic Wrap. 2017.
68. Wiley. Landmark Editor 3.0: Institute for Data Analysis and Visualization; 2005.
69. R Core Team. R: A language and environment for statistical computing: R Foundation for Statistical Computing; 2017.
70. Adams DC, Collyer ML, Kaliontzopoulou A. Geomorph: Software for geometric morphometric analyses; 2018.
71. Bookstein F, Schäfer K, Prossinger H, Seidler H, Fieder M, Stringer C, et al. Comparing frontal cranial profiles in archaic and modern Homo by morphometric analysis. *Anat Rec*. 1999;257:217–24.
72. Gunz P, Mitteroecker P, Bookstein FL. Semilandmarks in three dimensions. In: *Modern Morphometrics in physical anthropology*. New York: Kluwer Academic Publishers-Plenum Publishers; 2005. p. 73–98.
73. Adams DC, Rohlf FJ, Slice DE. A field comes of age: geometric morphometrics in the 21st century. *Hystrix Ital J Mammal*. 2013;24:7–14.
74. Adams DC. A generalized K statistic for estimating phylogenetic signal from shape and other high-dimensional multivariate data. *Syst Biol*. 2014;63:685–97.
75. Ingram T, Mahler DL. SURFACE: detecting convergent evolution from comparative data by fitting Ornstein-Uhlenbeck models with stepwise Akaike information criterion. *Methods Ecol Evol*. 2013;4:416–25.
76. Stayton CT. Is convergence surprising? An examination of the frequency of convergence in simulated datasets. *J Theor Biol*. 2008;252:1–14.
77. Arbuckle K, Minter A. Windex: analyzing convergent evolution using the wheatsheaf index in R. *Evol Bioinforma*. 2015;11:11–4.
78. Mittermeier RA, Wilson DE. *Handbook of the Mammals of the World: Sea Mammals*. Barcelona: Lynx Edicions; 2014.
79. Jefferson TA, Webber MA, Pitman RL. *Marine mammals of the world: A Comprehensive guide to their identification (second edition)*; 2015.
80. Hocking DP, Marx FG, Park T, Fitzgerald EMG, Evans AR. Reply to comment by Kienle et al. 2017. *Proc R Soc B Biol Sci*. 2017;284:1–4.

Publisher's Note

Springer Nature remains neutral with regard to jurisdictional claims in published maps and institutional affiliations.

Ready to submit your research? Choose BMC and benefit from:

- fast, convenient online submission
- thorough peer review by experienced researchers in your field
- rapid publication on acceptance
- support for research data, including large and complex data types
- gold Open Access which fosters wider collaboration and increased citations
- maximum visibility for your research: over 100M website views per year

At BMC, research is always in progress.

Learn more biomedcentral.com/submissions

