



**HAL**  
open science

## Derivation of imperfect interface models coupling damage and temperature

Elena Bonetti, Giovanna Bonfanti, Frédéric Lebon

► **To cite this version:**

Elena Bonetti, Giovanna Bonfanti, Frédéric Lebon. Derivation of imperfect interface models coupling damage and temperature. *Computers & Mathematics with Applications*, 2019, 77 (11), pp.2906-2916. 10.1016/j.camwa.2018.09.027 . hal-02335935

**HAL Id: hal-02335935**

**<https://hal.science/hal-02335935>**

Submitted on 22 Nov 2019

**HAL** is a multi-disciplinary open access archive for the deposit and dissemination of scientific research documents, whether they are published or not. The documents may come from teaching and research institutions in France or abroad, or from public or private research centers.

L'archive ouverte pluridisciplinaire **HAL**, est destinée au dépôt et à la diffusion de documents scientifiques de niveau recherche, publiés ou non, émanant des établissements d'enseignement et de recherche français ou étrangers, des laboratoires publics ou privés.

# Derivation of imperfect interface models coupling damage and temperature

Elena Bonetti <sup>a</sup>, Giovanna Bonfanti <sup>b</sup>, Frédéric Lebon <sup>c,\*</sup>

<sup>a</sup> *Department of Mathematics, University of Milano, Italy*

<sup>b</sup> *Department DICATAM - Section of Mathematics, University of Brescia, Italy*

<sup>c</sup> *Aix-Marseille Univ., CNRS, Centrale Marseille, LMA, France*

In this paper we introduce a model describing a layered structure composed by two thermoelastic adherents and a thin adhesive subject to a degradation process. By an asymptotic expansion method, we derive a model of imperfect interface coupling damage and temperature evolution. Moreover, assuming that the behaviour of the adhesive is ruled by two different regimes, one in traction and one in compression, we derive a second limit model where unilateral contact conditions on the interface are also included.

## 1. Introduction

In this paper, we perform a formal derivation of models of imperfect interface, coupling damage and temperature effects, as the formal asymptotic limits of models of a composite body made by two adherents with an adhesive substance located between them. The problem of finding effective models for imperfect interfaces is nowadays a subject of great interest both in engineering literature and in the analytical and numerical investigation of surface and bulk damage models [1–10]. Indeed, there are many applications of this kind of problems, in particular related to the development of layered composite structures. Moreover, it is known that interface regions between materials are fundamental to ensure strength and stability of structural elements. Thus, the theory of damage in (thermo)-elastic materials can be applied to derive models of contact with adhesion, assuming that the effectiveness of the adhesion between two bodies may be described in terms of a surface damage parameter (which is related to the active bonds in the adhesive substance on the contact interface).

Following the approach introduced in [11], we obtain models for a composite structure made by two thermoelastic bodies which are bonded together through an adhesive substance on a contact interface between them. It is assumed that microscopic damage in the interface may influence the strength of the adhesion and an unilateral condition is included ensuring non-penetrability between the bodies. We first consider a system describing the thermomechanical evolution of an adhesive substance located in a thin domain between two deformable bodies, subjected to the action of a damage process (described in terms of a damage parameter as in the phase transition theory), combined with thermal effects. The equations are recovered by the theory of Frémond for damage evolution of thermo-elastic materials [12–14], generalizing the principle of virtual powers and introducing the effects of microscopic forces, responsible for damage, in the whole energy balance of the system. Then, by using a formal asymptotic expansion method [15], letting the thickness of the adhesive substance go towards zero, we get limit models of imperfect interface coupling temperature and damage evolution. They are actually

---

\* Corresponding author.

*E-mail addresses:* elena.bonetti@unimi.it (E. Bonetti), giovanna.bonfanti@unibs.it (G. Bonfanti), lebon@lma.cnrs-mrs.fr (F. Lebon).

related with the models for contact with adhesion introduced and investigated, e.g., in [16–19]. Indeed, models describing contact with adhesion can be seen as surface damage models, in which the effectiveness of the adhesive bonds is related to the state of damage of microscopic cohesive links in the adhesive substance. In this sense a surface adhesive parameter actually corresponds to the local proportion of active bonds at the microscopic level of the adhesive substance, located on the contact surface. Note that some internal constraints on the damage parameter and its time derivative are considered, in order to guarantee physical consistency and to render the irreversible character of the degradation process, i.e. the material cannot repair itself once it results to be damaged. Moreover, assuming that the behaviour of the adhesive is ruled by two different regimes, one in traction and one in compression, in the limit model we include unilateral contact conditions on the interface, avoiding interpenetration between the adherents.

This kind of asymptotic analysis, introducing the interfaces as the limit of a thin medium bonding two adherents, has been investigated in the literature also to relate damage and delamination models (see e.g. [20] and [21,22]). Moreover, we recall [11] where, by the same approach used in the present paper, a model for imperfect interface with damage is obtained through an asymptotic analysis once the thickness  $\varepsilon$  of the adhesive substance between the adherents goes towards 0.

Here, in this contribution, we add the effects of the temperature, which is governed by evolution laws with different physical coefficients defined in the different regions and possibly depending on the thickness  $\varepsilon$  of the adhesive substance. Moreover, irreversibility of damage evolution is taken into account. The limit systems are complicated by the presence of internal constraints and by quadratic dissipative contributions coupling the equations. Actually, in the resulting limit models the jump of the temperatures and the heat flux through the interface is activated by the evolution of surface damage. Consequently, the boundary conditions for the bulk equations of the temperatures are related to a dissipative evolution equation written on the interface for the damage parameter.

Now, let us make precise the outline of the paper. In Section 2 we introduce the notation. In Section 3 we state the problem written in two main domains (the adherents) and on the thin layer located between them and corresponding to the adhesive substance with a given thickness  $\varepsilon > 0$ . In Section 4, we exploit the asymptotic expansion method to pass to the limit in the system as  $\varepsilon \searrow 0$ . Finally, in Section 5 we recover unilateral conditions in the limit system by use of an asymptotic analysis of some anisotropic property of the adhesive substance.

## 2. Nomenclature

In the following, a composite structure made by two adherents and a thin adhesive is considered. For the sake of simplicity, but without loss of generality, we simplify the geometry of the domain, as it is shown in Fig. 1. Then, the following notations are introduced:

- $(O, \mathbf{e}_1, \mathbf{e}_2, \mathbf{e}_3)$  is a Cartesian basis; the origin lies at the centre of the adhesive midplane and the  $x_3$ -axis runs perpendicular to the plane  $x_3 = 0$ ,
- $(x_1, x_2, x_3)$  are the three coordinates of a particle,
- $\varepsilon$  is the constant thickness of the adhesive,
- $B^\varepsilon = \{(x_1, x_2, x_3) \in \Omega^\varepsilon : |x_3| < \frac{\varepsilon}{2}\}$  is the domain of  $\mathbb{R}^3$  occupied by the adhesive (or interphase),
- $\Omega_\pm^\varepsilon = \{(x_1, x_2, x_3) \in \Omega : \pm x_3 > \frac{\varepsilon}{2}\}$  are the two domains of  $\mathbb{R}^3$  occupied by the adherents,
- $S_\pm^\varepsilon = \{(x_1, x_2, x_3) \in \Omega : x_3 = \pm \frac{\varepsilon}{2}\}$  are the interfaces between the adhesive and the adherents,
- $S_g \subset \partial\Omega^\varepsilon$  is the part of the boundary where an external load  $g$  is applied,
- $S_u \subset \partial\Omega^\varepsilon$  is the part of the boundary where the displacement is imposed to be equal to 0,
- $f$  is a body force which is applied in  $\Omega_\pm^\varepsilon$ ,
- $S = \{(x_1, x_2, x_3) \in \Omega^\varepsilon : x_3 = 0\}$  will be called in the following interface, as it will formally correspond to the limit adhesive interface between the two bodies,
- $S_\pm = \{(x_1, x_2, x_3) \in \Omega : x_3 = \pm \frac{1}{2}\}$  are the rescaled interfaces between the adhesive and the adherents,
- $u^\varepsilon$  is the displacement field,
- $\theta^\varepsilon$  is the temperature field,
- $\sigma^\varepsilon$  is the Cauchy stress tensor field,
- $q^\varepsilon$  is the thermal flux,
- $e(u^\varepsilon)$  is the strain tensor field which, under the small strain hypothesis, is defined by  $e_{ij}(u^\varepsilon) = \frac{1}{2}(u_{i,j}^\varepsilon + u_{j,i}^\varepsilon)$ , where the comma denotes the partial derivative,
- $q_{i,i}^\varepsilon$  means  $\text{div } q^\varepsilon$ , since repeated indexes are implicitly summed over; analogously,  $\sigma_{ij,j}^\varepsilon$  means  $\text{div } \sigma^\varepsilon$ ,
- $\chi^\varepsilon$  is the damage variable field,
- $\lambda^\varepsilon$  and  $\mu^\varepsilon$  are Lamé's coefficients of the adhesive, which depend a priori on the thickness  $\varepsilon$ ,
- $\alpha^\varepsilon$  is the fourth order elasticity tensor of the adhesive, verifying the usual conditions of positivity and symmetry, which depends a priori on the thickness  $\varepsilon$ ,
- $\alpha^\varepsilon, c^\varepsilon, \omega^\varepsilon, \eta^\varepsilon$  and  $\gamma^\varepsilon$  are given material positive coefficients of the adhesive, which depend a priori on the thickness  $\varepsilon$ ,

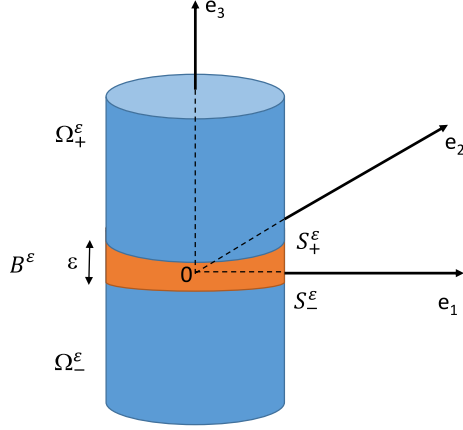


Fig. 1. Composite body: initial structure.

- $a^\pm$  is the fourth order elasticity tensor of the adherents, verifying the usual conditions of positivity and symmetry, which does not depend on the thickness  $\varepsilon$ ,
- $\alpha^\pm$ ,  $c^\pm$  and  $\gamma^\pm$  are given material positive coefficients of the adherents, which do not depend on the thickness  $\varepsilon$ ,
- $\mathbb{I}$  is the identity second order tensor in three dimensions,
- $\dot{f}$  is the time derivative of a function  $f$ ,
- $[[f]]_\pm$  denotes the jump of  $f$  along  $S_\pm^\varepsilon$  i.e.  
 $f(x_1, x_2, (\pm\varepsilon/2)^\pm) - f(x_1, x_2, (\pm\varepsilon/2)^\mp)$ . We recall that  $f(a^+) = \lim_{x \rightarrow a, x > a} f(x)$  and  $f(a^-) = \lim_{x \rightarrow a, x < a} f(x)$ ,
- $(\cdot)_+$  denote the positive part of a function, i.e.  $(x)_+ = \max\{x, 0\}$ ,
- $(\cdot)_-$  denotes the negative part of a function, i.e.  $(x)_- = \min\{x, 0\}$ ,
- $[f] = f(x_1, x_2, \frac{1}{2}) - f(x_1, x_2, -\frac{1}{2})$  denotes the jump of  $f$  along  $S_\pm$ ,
- $[[f]] = f(x_1, x_2, 0^+) - f(x_1, x_2, 0^-)$  denotes the jump of  $f$  along  $S$ ,
- $\langle f \rangle_0 = \frac{1}{2}(f(x_1, x_2, 0^+) + f(x_1, x_2, 0^-))$  denotes the average of a function  $f$  on  $S$ ,
- $I_A$  denotes the indicator function of the set  $A$ , i.e.  $I_A(x) = 0$  if  $x \in A$  and  $I_A(x) = +\infty$  if  $x \notin A$ .

Moreover, it is assumed that

- $S_g \cap S_u = \emptyset$ ,
- $S_u \cap \partial B^\varepsilon = \emptyset$ ,
- $S_g \cap \partial B^\varepsilon = \emptyset$ .

### 3. The three-dimensional equations of the composite body

A composite structure made by two adherents and a thin adhesive is considered (see Fig. 1). The three solids are supposed to be deformable. The two adherents are supposed to be thermoelastic. We introduce the free energy functional, defined in the two adherents and in the domain occupied by the adhesive. For  $\varepsilon > 0$ , we let  $\psi^+$  (respectively  $\psi^-$ ) the free energy in  $\Omega_+^\varepsilon$  (respectively in  $\Omega_-^\varepsilon$ ) be defined as it follows

$$\psi^\pm(e(u^\varepsilon), \theta^\varepsilon) = \frac{1}{2} a^\pm e(u^\varepsilon) : e(u^\varepsilon) + \alpha^\pm \theta^\varepsilon \text{tr}(e(u^\varepsilon)) - c^\pm \theta^\varepsilon \log \theta^\varepsilon \quad (1)$$

and, using the analogous notation, the pseudo-potential of dissipation is defined by

$$\phi^\pm(\nabla \theta^\varepsilon) = \frac{\gamma^\pm}{2\theta^\varepsilon} |\nabla \theta^\varepsilon|^2 \quad (2)$$

Moreover, we suppose that the adhesive is an isotropic thermoelastic material undergoing a damaging process. According to the Frémond theory on damage in thermo(visco)elasticity [12–14], we specify the free energy in the interphase  $B^\varepsilon$  as follows:

$$\begin{aligned} \psi^\varepsilon(e(u^\varepsilon), \theta^\varepsilon, \chi^\varepsilon) &= \frac{1}{2} \chi^\varepsilon a^\varepsilon e(u^\varepsilon) : e(u^\varepsilon) + \omega^\varepsilon (1 - \chi^\varepsilon) \\ &+ \alpha^\varepsilon \chi^\varepsilon \theta^\varepsilon \text{tr}(e(u^\varepsilon)) - c^\varepsilon \theta^\varepsilon \log \theta^\varepsilon + I_{[0,1]}(\chi^\varepsilon) \end{aligned} \quad (3)$$

where

$$a^\varepsilon e(u^\varepsilon) : e(u^\varepsilon) = \lambda^\varepsilon (e_{kk}(u^\varepsilon))^2 + 2\mu^\varepsilon (e(u^\varepsilon))^2 \quad (4)$$

In (3) the indicator function  $I_{[0,1]}$  yields the constraint on the damage parameter i.e.  $\chi^\varepsilon \in [0, 1]$ , where  $\chi^\varepsilon = 1$  and  $\chi^\varepsilon = 0$  correspond to the undamaged and completely damaged material, respectively. Next, we introduce the pseudo-potential of dissipation by

$$\phi^\varepsilon(\nabla\theta^\varepsilon, \dot{\chi}^\varepsilon) = \frac{1}{2} \frac{\gamma^\varepsilon}{\theta^\varepsilon} |\nabla\theta^\varepsilon|^2 + \frac{1}{2} \eta^\varepsilon |\dot{\chi}^\varepsilon|^2 + I_{\mathbb{R}^-}(\dot{\chi}^\varepsilon) \quad (5)$$

Note that the term  $I_{\mathbb{R}^-}(\dot{\chi}^\varepsilon)$  forces  $\dot{\chi}^\varepsilon$  to assume non-positive values and renders the irreversible character of the damage.

In the adherents, it is obtained the classical thermoelastic constitutive equation

$$\sigma^\varepsilon = \partial\psi_{,e}^\pm(e(u^\varepsilon), \theta^\varepsilon) = a^\pm e(u^\varepsilon) + \alpha^\pm \theta^\varepsilon \mathbb{I} \quad (6)$$

Moreover, the entropy is defined by

$$s^\varepsilon = -\partial\psi_{,\theta}^\pm(e(u^\varepsilon), \theta^\varepsilon) = c^\pm(\log\theta^\varepsilon + 1) - \alpha^\pm \text{tr}(e(u^\varepsilon)) \quad (7)$$

and the thermal flux by

$$q^\varepsilon = \theta^\varepsilon \partial\phi_{,\nabla\theta}^\pm(\nabla\theta^\varepsilon) = \gamma^\pm \nabla\theta^\varepsilon \quad (8)$$

In the same way, it is obtained in the adhesive

$$\sigma^\varepsilon = \partial\psi_{,e}^\varepsilon(e(u^\varepsilon), \theta^\varepsilon, \chi^\varepsilon) = \chi^\varepsilon a^\varepsilon e(u^\varepsilon) + \alpha^\varepsilon \theta^\varepsilon \chi^\varepsilon \mathbb{I}, \quad (9)$$

$$q^\varepsilon = \theta^\varepsilon \partial\phi_{,\nabla\theta}^\varepsilon(\nabla\theta^\varepsilon, \dot{\chi}^\varepsilon) = \gamma^\varepsilon \nabla\theta^\varepsilon \quad (10)$$

To simplify notations, in the following we use the indices  $i, j = 1, 2, 3$  while the notation  $\alpha$  for the index when it is intended to vary just for  $\alpha = 1, 2$ .

The equilibrium problem of the composite structure is described by the following system:

$$\left\{ \begin{array}{ll} \sigma_{ij,j}^\varepsilon + f_i = 0 & \text{in } \Omega_\pm^\varepsilon \\ c^\pm \dot{\theta}^\varepsilon - q_{i,i}^\varepsilon = 0 & \text{in } \Omega_\pm^\varepsilon \\ \sigma_{ij}^\varepsilon n_j = g_i & \text{on } S_g \\ [[\sigma_{i3}^\varepsilon]]_\pm = [[q_i^\varepsilon]]_\pm = 0 & \text{on } S_\pm^\varepsilon \\ [[u_i^\varepsilon]]_\pm = [[\theta^\varepsilon]]_\pm = 0 & \text{on } S_\pm^\varepsilon \\ u_i^\varepsilon = 0 & \text{on } S_u \\ \sigma_{ij}^\varepsilon = a_{ijhk}^\pm e_{hk}(u^\varepsilon) + \alpha^\pm \theta^\varepsilon \delta_{ij} & \text{in } \Omega_\pm^\varepsilon \\ q^\varepsilon = \gamma^\pm \nabla\theta^\varepsilon & \text{in } \Omega_\pm^\varepsilon \\ q_i^\varepsilon n_i = 0 & \text{on } \partial\Omega_\pm^\varepsilon \setminus S_\pm^\varepsilon \\ \sigma_{ij,j}^\varepsilon = 0 & \text{in } B^\varepsilon \\ c^\varepsilon \dot{\theta}^\varepsilon - q_{i,i}^\varepsilon - \alpha^\varepsilon \theta^\varepsilon (\dot{\chi}^\varepsilon \text{div} u^\varepsilon + \chi^\varepsilon \text{div} \dot{u}^\varepsilon) = \eta^\varepsilon |\dot{\chi}^\varepsilon|^2 & \text{in } B^\varepsilon \\ \sigma^\varepsilon = \chi^\varepsilon a^\varepsilon e(u^\varepsilon) + \alpha^\varepsilon \theta^\varepsilon \chi^\varepsilon \mathbb{I} & \text{in } B^\varepsilon \\ q^\varepsilon = \gamma^\varepsilon \nabla\theta^\varepsilon & \text{in } B^\varepsilon \\ \eta^\varepsilon \dot{\chi}^\varepsilon = \left( \omega^\varepsilon - \frac{1}{2} a^\varepsilon e(u^\varepsilon) : e(u^\varepsilon) - \alpha^\varepsilon \theta^\varepsilon \text{tr}(e(u^\varepsilon)) \right) - & \text{in } B^\varepsilon \\ \chi^\varepsilon > 0 & \text{in } B^\varepsilon \end{array} \right. \quad (11)$$

supplemented by given initial data. In particular, on the initial condition  $\chi_0$  for the damage variable we assume that  $0 < \chi_0 \leq 1$ . Note that this condition along with the irreversible character of the damage process ( $\dot{\chi}^\varepsilon$  cannot increase) yields in particular the upper bound  $\chi^\varepsilon \leq 1$ .

In the following, the adhesive will be supposed as isotropic i.e. defined by the Lamé coefficients  $\lambda^\varepsilon$  and  $\mu^\varepsilon$ .

#### 4. The asymptotic expansion method

Since the thickness of the interphase is very small, it is natural to seek the solution of problem (11) using asymptotic expansions with respect to the parameter  $\varepsilon$  [10,22–24]. In particular, the following asymptotic series with integer powers

are assumed:

$$\begin{cases} \mathbf{u}^\varepsilon = \mathbf{u}^0 + \varepsilon \mathbf{u}^1 + o(\varepsilon) \\ \sigma^\varepsilon = \sigma^0 + \varepsilon \sigma^1 + o(\varepsilon) \\ \theta^\varepsilon = \theta^0 + \varepsilon \theta^1 + o(\varepsilon) \\ q^\varepsilon = q^0 + \varepsilon q^1 + o(\varepsilon) \\ \chi^\varepsilon = \chi^0 + \varepsilon \chi^1 + o(\varepsilon) \end{cases} \quad (12)$$

The domain is then rescaled (see Fig. 2) using a classical procedure:

- In the adhesive, the following change of variable is introduced

$$(x_1, x_2, x_3) \in B^\varepsilon \rightarrow (z_1, z_2, z_3) \in B, \text{ with } (z_1, z_2, z_3) = (x_1, x_2, \frac{x_3}{\varepsilon})$$

and it is set  $\hat{\mathbf{u}}^\varepsilon(z_1, z_2, z_3) = \mathbf{u}^\varepsilon(x_1, x_2, x_3)$  and  $\hat{\sigma}^\varepsilon(z_1, z_2, z_3) = \sigma^\varepsilon(x_1, x_2, x_3)$ ,  
where  $B = \{(x_1, x_2, x_3) \in \Omega : |x_3| < \frac{1}{2}\}$ .

- In the adherents, the following change of variable is introduced

$$(x_1, x_2, x_3) \in \Omega_\pm^\varepsilon \rightarrow (z_1, z_2, z_3) \in \Omega_\pm, \text{ with } (z_1, z_2, z_3) = (x_1, x_2, x_3 \pm 1/2 \mp \varepsilon/2)$$

and it is set  $\bar{\mathbf{u}}^\varepsilon(z_1, z_2, z_3) = \mathbf{u}^\varepsilon(x_1, x_2, x_3)$  and  $\bar{\sigma}^\varepsilon(z_1, z_2, z_3) = \sigma^\varepsilon(x_1, x_2, x_3)$ , where  $\Omega_\pm = \{(x_1, x_2, x_3) \in \Omega : \pm x_3 > \frac{1}{2}\}$ .  
The external forces are assumed to be independent of  $\varepsilon$ . As a consequence, it is set  $\bar{f}(z_1, z_2, z_3) = f(x_1, x_2, x_3)$  and  $\bar{g}(z_1, z_2, z_3) = g(x_1, x_2, x_3)$ .

The governing equations of the rescaled problem are as follows:

$$\left\{ \begin{array}{ll} \bar{\sigma}_{ij,j} + \bar{f}_i = 0 & \text{in } \Omega_\pm \\ c^\pm \hat{\theta}^\varepsilon - \bar{q}_{i,i}^\varepsilon = 0 & \text{in } \Omega_\pm \\ \bar{\sigma}_{ij}^\varepsilon n_j = \bar{g}_i & \text{on } \bar{S}_g \\ \bar{u}_i^\varepsilon = 0 & \text{on } \bar{S}_u \\ \bar{\sigma}_{ij}^\varepsilon = \bar{a}_{ijhk}^\pm \bar{e}_{hk}(\bar{u}^\varepsilon) + \bar{\alpha}^\pm \bar{\theta}^\varepsilon \delta_{ij} & \text{in } \Omega_\pm \\ \bar{q}^\varepsilon = \bar{\gamma}^\pm \nabla \bar{\theta}^\varepsilon & \text{in } \Omega_\pm \\ \bar{\sigma}_{i3}^\varepsilon = \hat{\sigma}_{i3}^\varepsilon & \text{on } S_\pm \\ \bar{u}_i^\varepsilon = \hat{u}_i^\varepsilon & \text{on } S_\pm \\ \bar{\theta}^\varepsilon = \hat{\theta}^\varepsilon & \text{on } S_\pm \\ \bar{q}_i^\varepsilon = \hat{q}_i^\varepsilon & \text{on } S_\pm \\ \bar{q}_i^\varepsilon n_i = 0 & \text{on } \partial\Omega_\pm \setminus S_\pm \\ \hat{\sigma}_{ij}^\varepsilon = 0 & \text{in } B \\ \hat{\sigma}_{ij}^\varepsilon = \hat{\chi}^\varepsilon \hat{a}_{ijhk} \hat{e}_{hk}(\hat{u}^\varepsilon) + \hat{\chi}^\varepsilon \hat{\alpha}^\varepsilon \hat{\theta}^\varepsilon \delta_{ij} & \text{in } B \\ \hat{c}^\varepsilon \hat{\theta}^\varepsilon - \hat{q}_{i,i}^\varepsilon - \hat{\alpha}^\varepsilon \hat{\theta}^\varepsilon (\hat{\chi}^\varepsilon \text{div} \hat{u}^\varepsilon + \hat{\chi}^\varepsilon \text{div} \hat{u}^\varepsilon) = \hat{\eta}^\varepsilon |\hat{\chi}^\varepsilon|^2 & \text{in } B \\ \hat{q}^\varepsilon = \hat{\gamma}^\varepsilon \nabla \hat{\theta}^\varepsilon & \text{in } B \\ \hat{\eta}^\varepsilon \hat{\chi}^\varepsilon = \left( \hat{\omega}^\varepsilon - \frac{1}{2} \hat{a}^\varepsilon \hat{e}(\hat{u}^\varepsilon) : \hat{e}(\hat{u}^\varepsilon) - \hat{\alpha}^\varepsilon \hat{\theta}^\varepsilon \text{tr}(e(\hat{u}^\varepsilon)) \right)_- & \text{in } B \\ \hat{\chi}^\varepsilon > 0 & \text{in } B \end{array} \right. \quad (13)$$

where  $\bar{\cdot}, \hat{\cdot}$  denote the rescaled operators in the adherents and in the adhesive, respectively.

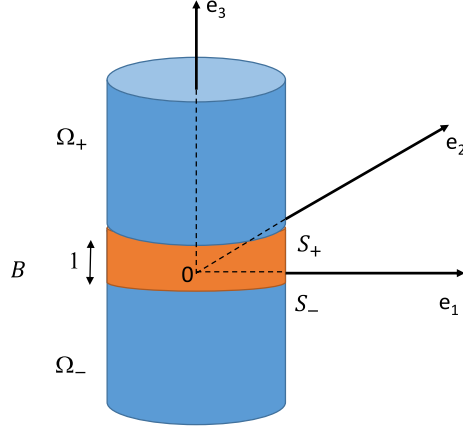


Fig. 2. Composite body: rescaled structure.

In view of (12) the displacement field, stress field, flux field, temperature field and the damage field are written as asymptotic expansions

$$\begin{cases} \hat{\sigma}^\varepsilon = \hat{\sigma}^0 + \varepsilon \hat{\sigma}^1 + o(\varepsilon) \\ \hat{u}^\varepsilon = \hat{u}^0 + \varepsilon \hat{u}^1 + o(\varepsilon) \\ \hat{q}^\varepsilon = \hat{q}^0 + \varepsilon \hat{q}^1 + o(\varepsilon) \\ \hat{\chi}^\varepsilon = \hat{\chi}^0 + \varepsilon \hat{\chi}^1 + o(\varepsilon) \\ \hat{\theta}^\varepsilon = \hat{\theta}^0 + \varepsilon \hat{\theta}^1 + o(\varepsilon) \\ \bar{\sigma}^\varepsilon = \bar{\sigma}^0 + \varepsilon \bar{\sigma}^1 + o(\varepsilon) \\ \bar{u}^\varepsilon = \bar{u}^0 + \varepsilon \bar{u}^1 + o(\varepsilon) \\ \bar{q}^\varepsilon = \bar{q}^0 + \varepsilon \bar{q}^1 + o(\varepsilon) \\ \bar{\theta}^\varepsilon = \bar{\theta}^0 + \varepsilon \bar{\theta}^1 + o(\varepsilon) \end{cases} \quad (14)$$

in the rescaled adhesive and adherents, respectively. In the following, only the soft case is considered i.e.  $\lambda^\varepsilon = \varepsilon \lambda^0$ ,  $\mu^\varepsilon = \varepsilon \mu^0$ ,  $\gamma^\varepsilon = \varepsilon \gamma^0$  and  $\alpha^\varepsilon = \varepsilon \alpha^0$ . In addition, it is supposed that  $\eta^\varepsilon = \varepsilon^{-1} \eta^{-1}$  and  $\omega^\varepsilon = \varepsilon^{-1} \omega^{-1}$ .

#### 4.1. Expansions of the equilibrium equations in the adherents

Substituting (14) into the first to sixth equations of (13) and into the eleventh one, it is obtained at the first order of expansion (power 0 in  $\varepsilon$ )

$$\begin{cases} \bar{\sigma}_{ij,j}^0 + \bar{f}_i = 0 & \text{in } \Omega_\pm \\ \bar{\sigma}_{ij}^0 n_j = \bar{g}_i & \text{on } \bar{S}_g \\ \bar{u}_i^0 = 0 & \text{on } \bar{S}_u \\ \bar{\sigma}_{ij}^0 = \bar{a}_{ijhk}^\pm \bar{e}_{hk}(\bar{u}^0) + \bar{\alpha}^\pm \bar{\theta}^0 \delta_{ij} & \text{in } \Omega_\pm \\ c^\pm \bar{\theta}^0 - \bar{q}_{i,i}^0 = 0 & \text{in } \Omega_\pm \\ \bar{q}^0 = \bar{\gamma}^\pm \nabla \bar{\theta}^0 & \text{in } \Omega_\pm \\ \bar{q}_i^0 n_i = 0 & \text{on } \partial \Omega_\pm \setminus S_\pm. \end{cases} \quad (15)$$

A quite classical problem of thermo-elasticity is obtained.

#### 4.2. Expansions of the equilibrium equations in the adhesive

Substituting (14) into the twelfth equation of (13) it is deduced that the following conditions hold in  $B$  (power  $-1$  in the expansions):

$$\hat{\sigma}_{i3,3}^0 = 0, \quad (16)$$

i.e.  $\hat{\sigma}_{i3}^0$  does not depend on  $z_3$ , that it can be expressed as

$$[\hat{\sigma}_{i3}^0] = 0 \quad (17)$$

In the adhesive the strain field becomes

$$\hat{e}(\hat{u}^\varepsilon) = \varepsilon^{-1}\hat{e}^{-1} + \hat{e}^0 + \varepsilon\hat{e}^1 + o(\varepsilon) \quad (18)$$

where

$$\begin{aligned} \hat{e}_{33}^{-1} &= \hat{u}_{3,3}^0 \\ \hat{e}_{\alpha 3}^{-1} &= \frac{1}{2}\hat{u}_{\alpha,3}^0. \end{aligned} \quad (19)$$

Thus it is obtained

$$\hat{\sigma}_{\alpha 3}^0 = \hat{\chi}^0 \mu^0 \hat{u}_{\alpha,3}^0 \quad (20)$$

and

$$\hat{\sigma}_{33}^0 = \hat{\chi}^0 (\lambda^0 + 2\mu^0) \hat{u}_{3,3}^0 \quad (21)$$

It is observed that  $\hat{\sigma}_{i3}^0$  does not depend on  $z_3$ , thus

$$\begin{aligned} \mu^0 \hat{u}_{\alpha,3}^0 &= (\hat{\chi}^0)^{-1} \hat{\sigma}_{\alpha 3}^0 \\ (\lambda^0 + 2\mu^0) \hat{u}_{3,3}^0 &= (\hat{\chi}^0)^{-1} \hat{\sigma}_{33}^0 \end{aligned} \quad (22)$$

and thus by integration in  $z_3$

$$\begin{aligned} \hat{\sigma}_{\alpha 3}^0 &= \langle\langle \hat{\chi}^0 \rangle\rangle \mu^0 [\hat{u}_\alpha^0] \\ \hat{\sigma}_{33}^0 &= \langle\langle \hat{\chi}^0 \rangle\rangle (\lambda^0 + 2\mu^0) [\hat{u}_3^0] \end{aligned} \quad (23)$$

where  $\langle\langle \hat{\chi}^0 \rangle\rangle = \left( \int_{-1/2}^{1/2} (\hat{\chi}^0)^{-1} dz_3 \right)^{-1}$ .

This leads to a soft model of imperfect interface with damage.

In the following lines, we will prove that  $\hat{\chi}^0$  does not depend on  $z_3$ .

If we consider that the damage parameter  $\hat{\chi}^\varepsilon$  decreases (i.e.  $\dot{\hat{\chi}}^\varepsilon \leq 0$ ), the first term in the expansion gives (power -1 in  $\varepsilon$ )

$$\eta^{-1} \dot{\hat{\chi}}^0 = \omega^{-1} - \frac{1}{2} (\mu^0 ((\hat{u}_{1,3}^0)^2 + (\hat{u}_{2,3}^0)^2) + (\lambda^0 + 2\mu^0) (\hat{u}_{3,3}^0)^2)$$

or equivalently

$$\eta^{-1} \dot{\hat{\chi}}^0 = \omega^{-1} - \frac{1}{2} (\hat{\sigma}_{13}^0 \hat{u}_{1,3}^0 + \hat{\sigma}_{23}^0 \hat{u}_{2,3}^0 + \hat{\sigma}_{33}^0 \hat{u}_{3,3}^0) (\hat{\chi}^0)^{-1}$$

or equivalently

$$\eta^{-1} \dot{\hat{\chi}}^0 = \omega^{-1} - \frac{1}{2} \left( (\hat{\sigma}_{13}^0)^2 / \mu^0 + (\hat{\sigma}_{23}^0)^2 / \mu^0 + (\hat{\sigma}_{33}^0)^2 / (\lambda^0 + 2\mu^0) \right) (\hat{\chi}^0)^{-2}$$

Now, these three last equations can be integrated along the third direction. Let  $\langle \hat{\chi}^0 \rangle = \int_{-1/2}^{1/2} \hat{\chi}^0 dz_3$  and  $\langle\langle \hat{\chi}^0 \rangle\rangle_2 = \int_{-1/2}^{1/2} (\hat{\chi}^0)^{-2} dz_3$ . Particularly, we get

$$\eta^{-1} \langle \dot{\hat{\chi}}^0 \rangle = \omega^{-1} - \frac{1}{2} \left( \mu^0 [\hat{u}_1^0]^2 + \mu^0 [\hat{u}_2^0]^2 + (\lambda^0 + 2\mu^0) [\hat{u}_3^0]^2 \right) \langle\langle \hat{\chi}^0 \rangle\rangle_2 \langle\langle \hat{\chi}^0 \rangle\rangle^2$$

or

$$\eta^{-1} \langle \dot{\hat{\chi}}^0 \hat{\chi}^0 \rangle = \omega^{-1} \langle \hat{\chi}^0 \rangle - \frac{1}{2} \left( \mu^0 [\hat{u}_1^0]^2 + \mu^0 [\hat{u}_2^0]^2 + (\lambda^0 + 2\mu^0) [\hat{u}_3^0]^2 \right) \langle\langle \hat{\chi}^0 \rangle\rangle$$

The last two equations are verified simultaneously for any choice of  $\eta^{-1}$  and  $\omega^{-1}$  if and only if  $\langle \dot{\hat{\chi}}^0 \hat{\chi}^0 \rangle = \langle \dot{\hat{\chi}}^0 \rangle \langle \hat{\chi}^0 \rangle$ . This latter (assuming that the initial value of  $\hat{\chi}^0$  does not depend on  $z_3$ ) is equivalent to  $(\langle \hat{\chi}^0 \rangle)^2 = \int_{-1/2}^{1/2} (\hat{\chi}^0)^2 dz_3$  and this holds if and only if  $\hat{\chi}^0$  does not depend on  $z_3$ .

We thus obtain

$$\eta^{-1} \dot{\hat{\chi}}^0 = \omega^{-1} - \frac{1}{2} \left( \mu^0 [\hat{u}_1^0]^2 + \mu^0 [\hat{u}_2^0]^2 + (\lambda^0 + 2\mu^0) [\hat{u}_3^0]^2 \right)$$

This equation can be decomposed, as classical, into normal and tangential parts

$$\eta^{-1} \dot{\hat{\chi}}^0 = \omega^{-1} - \frac{1}{2} (\lambda^0 + 2\mu^0) [\hat{u}_N^0]^2 - \frac{1}{2} \mu^0 [\hat{u}_T^0] \cdot [\hat{u}_T^0]$$



Now, we are interested by the two penultimate equations in (13). Let us consider the case where  $c^\varepsilon$  does not depend on  $\varepsilon$ . We get

$$-\hat{q}_{3,3}^0 = \eta^{-1} \left| \dot{\chi}^0 \right|^2$$

$$\hat{q}_{\alpha,\alpha}^0 = 0, \quad \alpha = 1, 2$$

$$\hat{q}_3^0 = \gamma^0 \hat{\theta}_3^0$$

and

$$[\hat{q}_3^0] = -\eta^{-1} \left| \dot{\chi}^0 \right|^2$$

#### 4.3. Matching between the adhesive and the adherents

Substituting (16) into the seventh to tenth equations of (13), it is deduced that the following conditions hold on  $S_\pm$ :

$$\begin{aligned} \hat{\sigma}_{i3}^0(z_1, z_2, \pm \frac{1}{2}) &= \bar{\sigma}_{i3}^0(z_1, z_2, \pm \frac{1}{2}) = \sigma_{i3}^0(x_1, x_2, \pm \frac{\varepsilon}{2}) \approx \sigma_{i3}^0(x_1, x_2, 0) \\ \hat{u}_i^0(z_1, z_2, \pm \frac{1}{2}) &= \bar{u}_i^0(z_1, z_2, \pm \frac{1}{2}) = u_i^0(x_1, x_2, \pm \frac{\varepsilon}{2}) \approx u_i^0(x_1, x_2, 0^\pm) \\ \hat{\theta}^0(z_1, z_2, \pm \frac{1}{2}) &= \bar{\theta}^0(z_1, z_2, \pm \frac{1}{2}) = \theta^0(x_1, x_2, \pm \frac{\varepsilon}{2}) \approx \theta^0(x_1, x_2, 0^\pm) \\ \hat{q}^0(z_1, z_2, \pm \frac{1}{2}) &= \bar{q}^0(z_1, z_2, \pm \frac{1}{2}) = q^0(x_1, x_2, \pm \frac{\varepsilon}{2}) \approx q^0(x_1, x_2, 0^\pm) \end{aligned} \quad (24)$$

In conclusion, we obtain the following system on the final configuration (Fig. 3)

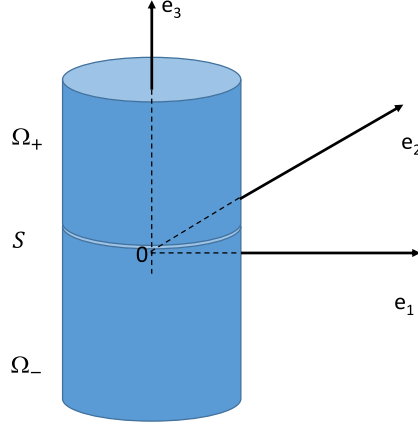
$$\left\{ \begin{array}{ll} \sigma_{ij}^0 + f_i = 0 & \text{in } \Omega_\pm \\ \sigma_{ij}^0 n_j = g_i & \text{on } S_g \\ u_i^0 = 0 & \text{on } S_u \\ \sigma_{ij}^0 = a_{ijhk}^\pm e_{hk}(u^0) + \alpha^\pm \theta^0 \delta_{ij} & \text{in } \Omega_\pm \\ c^\pm \dot{\theta}^0 - q_{i,i}^0 = 0 & \text{in } \Omega_\pm \\ q^0 = \gamma^\pm \nabla \theta^0 & \text{in } \Omega_\pm \\ q_i^0 n_i = 0 & \text{on } \partial \Omega_\pm \setminus S \\ [ [\sigma_{i3}^0] ] = 0 & \text{on } S \\ \sigma_{\alpha 3}^0 = \chi^0 \mu^0 [ [u_\alpha^0] ] & \text{on } S \\ \sigma_{33}^0 = \chi^0 (\lambda^0 + 2\mu^0) [ [u_3^0] ] & \text{on } S \\ \eta^{-1} \dot{\chi}^0 = (\omega^{-1} - (\mu^0 [ [u_1^0] ]^2 + \mu^0 [ [u_2^0] ]^2 + (\lambda^0 + 2\mu^0) [ [u_3^0] ]^2))_- & \text{on } S \\ \chi^0 > 0 & \text{on } S \\ [ [q_3^0] ] = -\eta^{-1} \left| \dot{\chi}^0 \right|^2 & \text{on } S \\ [ [\theta^0] ] = (\gamma^0)^{-1} \langle q_3^0 \rangle_0 & \text{on } S \end{array} \right. \quad (25)$$

We have obtained a model of imperfect soft interface with damage evolution which takes into account thermal variations. We recall that the term ‘‘soft’’ comes from the linear dependence of stiffness on thickness [4]. The temperature is activated by the damage evolution.

## 5. Introducing unilateral contact

In this section, it is shown how to introduce unilateral conditions [6,4]. The initial system of constitutive equations

$$\left\{ \begin{array}{ll} \sigma^\varepsilon = \chi^\varepsilon a^\varepsilon e(u^\varepsilon) + \alpha^\varepsilon \theta^\varepsilon \chi^\varepsilon \mathbb{I} & \text{in } B^\varepsilon \\ \eta^\varepsilon \dot{\chi}^\varepsilon = \left( \omega^\varepsilon - \frac{1}{2} a^\varepsilon e(u^\varepsilon) : e(u^\varepsilon) - \alpha^\varepsilon \theta^\varepsilon \text{tr}(e(u^\varepsilon)) \right)_- & \text{in } B^\varepsilon \end{array} \right. \quad (26)$$



**Fig. 3.** Composite body: final configuration.

is replaced by constitutive equations with two regimes

$$\left\{ \begin{array}{ll} \sigma^\varepsilon = \chi^\varepsilon a^\varepsilon e(u^\varepsilon) + \alpha^\varepsilon \theta^\varepsilon \chi^\varepsilon \mathbb{I} & \text{if } \text{tre}(u^\varepsilon) \geq 0 & \text{in } B^\varepsilon \\ \sigma^\varepsilon = \chi^\varepsilon b^\varepsilon e(u^\varepsilon) + \alpha^\varepsilon \theta^\varepsilon \chi^\varepsilon \mathbb{I} & \text{if } \text{tre}(u^\varepsilon) \leq 0 & \text{in } B^\varepsilon \\ \eta^\varepsilon \dot{\chi}^\varepsilon = \left( \omega^\varepsilon - \frac{1}{2} a^\varepsilon e(u^\varepsilon) : e(u^\varepsilon) - \alpha^\varepsilon \theta^\varepsilon \text{tr}(e(u^\varepsilon)) \right) & \text{if } \text{tre}(u^\varepsilon) \geq 0 & \text{in } B^\varepsilon \\ \eta^\varepsilon \dot{\chi}^\varepsilon = \left( \omega^\varepsilon - \frac{1}{2} b^\varepsilon e(u^\varepsilon) : e(u^\varepsilon) - \alpha^\varepsilon \theta^\varepsilon \text{tr}(e(u^\varepsilon)) \right) & \text{if } \text{tre}(u^\varepsilon) \leq 0 & \text{in } B^\varepsilon \end{array} \right. \quad (27)$$

where  $b^\varepsilon$  is a fourth order tensor of elasticity with the usual conditions of symmetry and positivity. In addition, the material is supposed to be isotropic and Lamé' coefficients associated to  $b^\varepsilon$  are  $\lambda^\varepsilon = \lambda^1$  and  $\mu^\varepsilon = \varepsilon \mu^0$ .

The asymptotic method presented above is used. Let us consider the term  $\text{tre}(\hat{u}^\varepsilon)$  whose first term in the expansion (order  $-1$ ) is  $\hat{u}_{3,3}^0$ . By integration in  $z_3$  it becomes  $[\hat{u}_3^0]$ . Thus  $\text{tre}(\hat{u}^\varepsilon) \geq 0$  (resp.  $\text{tre}(\hat{u}^\varepsilon) \leq 0$ ) gives  $[\hat{u}_3^0] \geq 0$  (resp.  $[\hat{u}_3^0] \leq 0$ ). Note that the second term in the expansion gives  $\hat{u}_{1,1}^0 + \hat{u}_{2,2}^0 + \hat{u}_{3,3}^1$ . Proceeding as in the previous section, in the case  $\text{tre}(\hat{u}^\varepsilon) \geq 0$  (leading to  $[\hat{u}_3^0] \geq 0$  and  $[u_3^0] \geq 0$ ), we have

$$\sigma^0 \mathbf{e}_3 = \chi^0 (\mu^0 [u_1^0], \mu^0 [u_2^0], (\lambda^0 + 2\mu^0) [u_3^0])$$

and

$$\eta^{-1} \dot{\chi}^0 = (\omega^{-1} - (\mu^0 [u_1^0]^2 + \mu^0 [u_2^0]^2 + (\lambda^0 + 2\mu^0) [u_3^0]^2))_-$$

Now, the case  $\text{tre}(\hat{u}^\varepsilon) \leq 0$  (corresponding to  $[\hat{u}_3^0] \leq 0$  or  $[u_3^0] \leq 0$ ) is studied. The constitutive second equation of (27) leads to

$$\hat{u}_{3,3}^0 = 0$$

or equivalently

$$[\hat{u}_3^0] = 0$$

or

$$[u_3^0] = 0$$

and also to

$$\hat{\sigma}_{\alpha 3}^0 = \hat{\chi}^0 \mu^0 \hat{u}_{\alpha,3}^0, \quad \alpha = 1, 2$$

Moreover, it holds

$$\hat{\sigma}_{33}^0 = \hat{\chi}^0 \lambda^1 (\hat{u}_{1,1}^0 + \hat{u}_{2,2}^0 + \hat{u}_{3,3}^1) + 2\mu^0 \hat{u}_{3,3}^0 = \hat{\chi}^0 \lambda^1 (\hat{u}_{1,1}^0 + \hat{u}_{2,2}^0 + \hat{u}_{3,3}^1),$$

since  $\hat{u}_{3,3}^0 = 0$ . Then, letting  $\hat{\tau}^0 = \hat{\chi}^0 \lambda^1 (\hat{u}_{1,1}^0 + \hat{u}_{2,2}^0 + \hat{u}_{3,3}^1)$ , we recall that  $\hat{\tau}^0 \leq 0$ .

In conclusion, also considering the two situations for  $tre(\hat{u}^\varepsilon) \geq 0$  and  $tre(\hat{u}^\varepsilon) \leq 0$ , the following system is written, coupling bulk and surface equations and including Signorini type unilateral conditions

$$\left\{ \begin{array}{ll}
 \sigma_{ij,j}^0 + f_i = 0 & \text{in } \Omega_{\pm} \\
 \sigma_{ij}^0 n_j = g_i & \text{on } S_g \\
 u_i^0 = 0 & \text{on } S_u \\
 \sigma_{ij}^0 = a_{ijhk}^{\pm} e_{hk}(u^0) + \alpha^{\pm} \theta^0 \delta_{ij} & \text{in } \Omega_{\pm} \\
 c^{\pm} \dot{\theta}^0 - q_{i,i}^0 = 0 & \text{in } \Omega_{\pm} \\
 q^0 = \gamma^{\pm} \nabla \theta^0 & \text{in } \Omega_{\pm} \\
 q_i^0 n_i = 0 & \text{on } \partial \Omega_{\pm} \setminus S \\
 [ ] \sigma_{i3}^0 [ ] = 0 & \text{on } S \\
 \sigma_{\alpha 3}^0 = \mu^0 [ ] u_{\alpha}^0 [ ] & \text{on } S \\
 \sigma_{33}^0 = (\lambda^0 + 2\mu^0) [ ] u_3^0 [ ]_+ + \tau_0 & \text{on } S \\
 [ ] u_3^0 [ ] \geq 0, \tau_0 \leq 0, [ ] u_3^0 [ ] \tau_0 = 0 & \text{on } S \\
 \eta^{-1} \dot{\chi}^0 = (\omega^{-1} - (\mu^0 [ ] u_1^0 [ ])^2 + \mu^0 [ ] u_2^0 [ ])^2 + (\lambda^0 + 2\mu^0) [ ] u_3^0 [ ]_+^2)_{-} & \text{on } S \\
 \chi^0 > 0 & \text{on } S \\
 [ ] q_3^0 [ ] = -\eta^{-1} |\dot{\chi}^0|^2 & \text{on } S \\
 [ ] \theta^0 [ ] = (\gamma^0)^{-1} \langle q_3^0 \rangle_0 & \text{on } S
 \end{array} \right. \quad (28)$$

Note that the resulting system may be read as a model for contact with adhesion between two deformable solids including thermal effects. In particular, conditions on the traces of the temperatures of the two adherents on the contact interface provide boundary conditions for the evolution of the temperature inside the domains which turns out to be activated by damage evolution.

## 6. Conclusion

In this paper a model of imperfect interface is derived by an asymptotic expansion method. The model takes into account damage evolution and thermal couplings. It is shown how it is possible to introduce unilateral conditions by the same methodology.

In the future, we intend to implement this model in a numerical software [21,4,25] to study a larger family of parameters and to propose more general damage evolution. In addition, we propose to study the hyperelastic case already partially addressed in [26,27].

## Acknowledgements

This research was partially supported by Gruppo Nazionale per l'Analisi Matematica, la Probabilità e le loro Applicazioni (GNAMPA) of the Istituto Nazionale di Alta Matematica (INDAM), Italy.

## References

- [1] Y. Benveniste, T. Miloh, Imperfect soft and stiff interfaces in two-dimensional elasticity, *Mech. Mater.* 33 (6) (2001) 309–323.
- [2] P.G. Bornert, T. Bretheau, P. Gilormini, Homogénéisation en Mécanique des Matériaux, Tome 1 : Matériaux Aléatoires Élastiques et Milieux Périodiques, Hermes Sciences, Paris, 2001.
- [3] N. Challamel, U.A. Girhammar, Boundary-layer effect in composite beams with interlayer slip, *J. Aerosp. Eng.* 24 (2) (2011) 199–209.
- [4] S. Dumont, F. Lebon, M.L. Raffa, R. Rizzoni, Towards nonlinear imperfect interface models including micro-cracks and smooth roughness, *Ann. Solid Struct. Mech.* 9 (2017) 13–27.
- [5] F. Fouchal, F. Lebon, I. Titeux, Contribution to the modelling of interfaces in masonry construction, *Constr. Build. Mater.* 23 (2009) 2428–2441.
- [6] F. Fouchal, F. Lebon, M.L. Raffa, G. Vairo, An interface model including cracks and roughness applied to masonry, *Open Civ. Eng. J.* 8 (2014) 263–271.
- [7] G. Geymonat, F. Krasucki, S. Lenci, Mathematical analysis of a bonded joint with a soft thin adhesive, *Math. Mech. Solids* 4 (2) (1999) 201–225.
- [8] Z. Hashin, Thin interphase/imperfect interface in elasticity with application to coated fiber composites, *J. Mech. Phys. Solids* 50 (12) (2002) 2509–2537.
- [9] F. Lebon, A. Ould Khaoua, C. Licht, Numerical study of soft adhesively bonded joints in finite elasticity, *Comput. Mech.* 21 (1998) 134–140.
- [10] F. Lebon, R. Rizzoni, Asymptotic study on a soft thin layer: The non-convex case, *Mech. Adv. Mater. Struct.* 15 (2008) 12–20.
- [11] E. Bonetti, G. Bonfanti, F. Lebon, R. Rizzoni, A model of imperfect interface with damage, *Meccanica* 52 (8) (2017) 1911–1922.
- [12] E. Bonetti, G. Bonfanti, Well-posedness results for a model of damage in thermoviscoelastic materials, *Ann. Inst. H. Poincaré Anal. Non Linéaire* 25 (2008) 1187–1208.
- [13] M. Frémond, Adhérence des solides, *J. Méc. Théor. Appl.* 6 (1987) 383–407.
- [14] M. Frémond, *Non-Smooth Thermo-Mechanics*, Springer, 2001.
- [15] A. Klarbring, Derivation of the adhesively bonded joints by the asymptotic expansion method, *Internat. J. Engrg. Sci.* 29 (1991) 493–512.

- [16] E. Bonetti, G. Bonfanti, R. Rossi, Global existence for a contact problem with adhesion, *Math. Methods Appl. Sci.* 31 (2008) 1029–1064.
- [17] E. Bonetti, G. Bonfanti, R. Rossi, Thermal effects in adhesive contact: modelling and analysis, *Nonlinearity* 22 (2009) 2697–2731.
- [18] E. Bonetti, G. Bonfanti, R. Rossi, Analysis of a temperature-dependent model for adhesive contact with friction, *Physica D* 285 (2014) 29–42.
- [19] E. Bonetti, G. Bonfanti, R. Rossi, Modeling via internal energy balance and analysis of adhesive contact with friction in thermoviscoelasticity, *Nonlinear Anal. RWA* 22 (2015) 473–507.
- [20] A. Mielke, T. Roubicek, M. Thomas, From damage to delamination in nonlinear elastic materials at small strains, *J. Elasticity* 109 (2) (2012) 235–273.
- [21] S. Dumont, F. Lebon, R. Rizzoni, An asymptotic approach to the adhesion of thin stiff films, *Mech. Res. Commun.* 58 (2014) 24–35.
- [22] F. Lebon, R. Rizzoni, Asymptotic behavior of a hard thin linear elastic interphase: An energy approach, *Int. J. Solids Struct.* 48 (2011) 441–449.
- [23] F. Lebon, R. Rizzoni, Modeling a hard, thin curvilinear interface, *Discrete Contin. Dyn. Syst. Ser. S* 6 (6) (2013) 1569–1586.
- [24] F. Lebon, R. Rizzoni, S. Ronel-Idrissi, Asymptotic analysis of some non-linear soft thin layers, *Comput. Struct.* 82 (2004) 1929–1938–486.
- [25] C. Pelissou, F. Lebon, Asymptotic modeling of quasi-brittle interfaces, *Comput. Struct.* 87 (2009) 1216–1223.
- [26] R. Rizzoni, S. Dumont, F. Lebon, On Saint Venant - Kirchhoff Imperfect interfaces, *Int. J. Nonlinear Mec.* 89 (2017) 101–115.
- [27] M.L. Raffa, F. Lebon, R. Rizzoni, Derivation of a model of imperfect interface with finite strains and damage by asymptotic techniques. Application to masonry structures, *Meccanica* 53 (7) (2018) 1645–1660.