



HAL
open science

Seeking for tipping point in the housing market : evidence from a field experiment

Sylvain Chareyron, Samuel Gorohouna, Yannick L'Horty, Pascale Petit,
Catherine Ris

► To cite this version:

Sylvain Chareyron, Samuel Gorohouna, Yannick L'Horty, Pascale Petit, Catherine Ris. Seeking for tipping point in the housing market : evidence from a field experiment. 2019. hal-02334132

HAL Id: hal-02334132

<https://hal.science/hal-02334132>

Preprint submitted on 25 Oct 2019

HAL is a multi-disciplinary open access archive for the deposit and dissemination of scientific research documents, whether they are published or not. The documents may come from teaching and research institutions in France or abroad, or from public or private research centers.

L'archive ouverte pluridisciplinaire **HAL**, est destinée au dépôt et à la diffusion de documents scientifiques de niveau recherche, publiés ou non, émanant des établissements d'enseignement et de recherche français ou étrangers, des laboratoires publics ou privés.

SEEKING FOR TIPPING POINT IN THE HOUSING MARKET:
EVIDENCES FROM A FIELD EXPERIMENT

SYLVAIN CHAREYRON, SAMUEL GOROHOUNA, YANNICK L'HORTY,
PASCALE PETIT, CATHERINE RIS

www.tepp.eu

TEPP - Institute for Labor Studies and Public Policies
TEPP - Travail, Emploi et Politiques Publiques - FR CNRS 3435

Seeking for tipping point in the housing market: evidence from a field experiment

Sylvain CHAREYRON¹, Samuel GOROHOUNA²,
Yannick L'HORTY³, Pascale PETIT⁴, Catherine Ris⁵

March 2019

This study econometrically assesses the presence of a tipping point on ethnic discrimination in the rental housing market. We measure discrimination and access to housing in New Caledonia by a large field experiment. Between 2015 and 2017, we sent six applications in response to 741 real-estate rental ads, for a total of 3,616 responses. Applicants have European, Kanak (the indigenous people) and Wallisian name and various signal of stability. Using data from the local census, we link the location of the offer and the neighbourhood composition. Probit random intercept regressions show that ethnic discrimination is stronger in neighbourhoods that are around the tipping point in ethnic composition.

Key words: discrimination, rental market, tipping-point

JEL Codes: J15 R23 C93

This research was supported by the French National Research Agency - Grant DALTON ANR-15-CE28-0004) and by the University of New-Caledonia. We are grateful to Tuamanaia FOIMAPAFISI for her assistance.

¹ Sylvain CHAREYRON, Université Paris-Est, ERUDITE (EA 437), TEPP-CNRS (FR 3435), UPEC, UPEM, F-94010, Créteil, France, sylvain.chareyron@u-pec.fr

² Samuel GOROHOUNA, Université de la Nouvelle-Calédonie, LARJE (EA 3329), samuel.gorohouna@unc.nc

³ Yannick L'HORTY, Université Paris-Est, ERUDITE (EA 437), TEPP-CNRS (FR 3435), UPEC, UPEM, F-77454 Marne-La-Vallée France, yannick.lhorty@u-pem.fr.

⁴ Pascale PETIT, Université Paris-Est, ERUDITE (EA 437), TEPP-CNRS (FR 3435), UPEC, UPEM, F-77454 Marne-La-Vallée France. pascale.petit@u-pem.fr.

⁵ Catherine Ris, Université de la Nouvelle-Calédonie, LARJE (EA 3329), catherine.ris@unc.nc

Introduction

While there is a growing number of studies measuring discrimination in access to housing, there is still too little interest in the determinants of such discrimination, particularly the role played by the local composition of inhabitants in the local context. This effect could play a major impact on the segregation dynamic if discriminations affect more individuals belonging to ethnic minorities when they try to access a neighbourhood composed mainly of individuals from the major ethnicity. This phenomenon could occur if landlords have the will to maintain ethnic homogeneity in this type of neighbourhood in order to avoid outflows of individuals from the main ethnic group. Card, Mas, and Rothstein (2008) showed that in the United-States, white populations tend to leave cities with minority shares between 5% and 20%. As advocated by Hanson and Hawley (2011), landlords may want to prevent this phenomenon and, therefore, be more likely to discriminate in neighbourhoods which are close to the tipping point. While it is generally accepted that discrimination can reinforce residential segregation, the inverse link between local socio-ethnic composition and the intensity of discrimination is less explored. The question is whether discrimination amplifies the effect of segregating mechanisms or whether it reduces them.

To our knowledge, this article is the first to econometrically assess the presence of a tipping point of the ethnic discrimination in the rental housing market in an European context. We use a dataset of 3,616 observations created from a large field experiment to determine the relationship between ethnic discrimination in the rental housing market and the ethnic composition of the neighbourhood in New Caledonia. In this way, using census dataset from ISEE⁶, each observation is related to information on the composition of the neighbourhood in which the housing is located.

The scope of the study is the Greater Noumea, the capital of the French territory of New Caledonia. Three types of profile are tested: the Kanak, the Wallisian and the European applicant. These ethnic groups represent respectively 23 percent, 12 percent and 34 percent of the population in the agglomeration.⁷ New Caledonia and more particularly the Greater Noumea area, has several aspects that are particularly interesting for our research project. First of all, it is both a European and Pacific territory, an ultra-peripheral one. Discrimination in access to housing has been little studied in Europe in relation to the United States. Secondly, it is the only territory in the French republican space, with French Polynesia, where we have ethnic statistics, which allow us to measure local ethnic distributions. We use these statistics to compare them with data from a discrimination test. Finally, the Nouméa agglomeration, where we are located, is a territory where the potentially discriminated population varies locally from a small minority to a large majority. We therefore have a wide spatial variety for

⁶ Institut de la statistique et des études économiques Nouvelle-Calédonie.

⁷ The rest of the population of the Greater Nouméa agglomeration are methis (10%), other ethnic groups (17%) and undeclared (3%).

our variable of interest, the local socio-ethnic composition. The high level of segregation in the Nouméa agglomeration means that it is perfectly suited for studying the link between ethnic environment and discrimination. In the southern part of this agglomeration, the share of the Kanak population is only 5 percent, whereas in the northern part of the agglomeration, which is only ten kilometers away, this proportion reaches 50 percent. Two signals of stability are also introduced, namely being civil servant and returning from Metropolitan France, in order to distinguish between the two core types of discrimination, which are: discrimination based on information and discrimination based on preferences.

The results indicate a strong discrimination against the Kanak applicant and even more against the Wallisian applicant. A stability signals increase the response rate more substantially for the Kanak applicant than for the European applicant, suggesting that both mechanisms driving discrimination are relevant, i.e. preference and information. We show that the discrimination against the Kanak applicant is highest in neighbourhoods where the concentration of Europeans is between 60% and 72%. However, we find no statistically significant links between discrimination and the concentration of Wallisians or Kanaks.

The next section of the paper describes the context of the study. Section 2 is a discussion of the previous research on the presence of a tipping point on the discrimination in the housing market. Section 3 describes the experimental protocol and the data collection. Section 4 presents the results of the experiment and section 5 discuss the robustness of the results. We conclude in the final section of the paper.

1. Social and ethnic context of New Caledonia

New Caledonia is one of the South Pacific region's largest economies. It sets itself apart from other French overseas communities and islands of Oceania by its high living standard and advanced human development. The last 25 years have been marked by important social and economic progress. However, Caledonian society is characterised by substantial inequalities. The standard of living increased at an annual rate of 1.3 per cent from 1991 to 2008, accompanied by deepening inequalities. In 2008, the standard of living of the richest 10 per cent was 7.9 times higher than the standard of living of the poorest 10 per cent. Ethnic background of inequalities is here very strong.

Indeed, similar to its neighbours, which have experienced comparable colonial settlements (Australia and New Zealand in particular), New Caledonia is characterized by cultural heterogeneity; Kanak (indigenous people) represent approximately 40 per cent of the population, compared with 12 per cent of other Pacific populations, 27 per cent of Europeans and 3 per cent of Asians. In these countries, groups suffering from lower socio-economic outcomes and discrimination are not immigrant

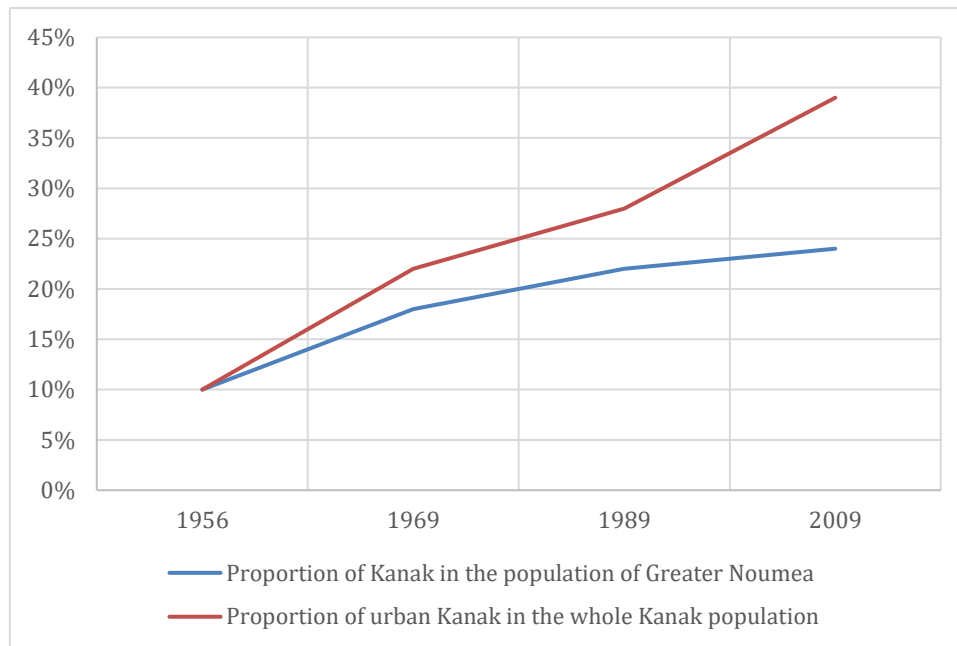
minorities. That is, in New Caledonia, Kanak are the majority compared with other ethnic groups in the country. New Caledonia also differs from most European countries in that ethnic groups are identified in official statistics; eight of the nine censuses held in New Caledonia since World War II (2004 is the exception) identify ethnic groups, which highlight the need for policies aimed to reduce gaps in social inequalities. This makes it possible to draw the ethnic composition of each neighbourhood and thus link discrimination in access to housing and ethnic segregation by place of residence.

Since the early 1990s, policies intended to reduce inequality have been implemented. Substantial social and economic policies favouring Kanak have accompanied the *Accord de Noumea* (signed in 1998) and, before that, the *Accords de Matignon* (signed in 1988). In relation to “closing the gap” policies and Kanak access to positions of responsibility in all areas of activity, rebalancing policies are most conspicuous in the areas of education and employment through the implementation of training programs, development of infrastructures and local employment protection policy. A more equitable distribution of resources, opportunities and power among ethnic groups is essential to ensure economic and social development of New Caledonia because high inequality threatens a country’s political stability, especially in this period of the history of New Caledonia (referendum on independence being held in 2018).

Although dramatic progress has been made in the area of school achievement, socio-economic indicators still differ widely across ethnic groups; Kanak remaining socially disadvantaged and discriminated on the labor market (Gorohouna et al., 2013). Bunel et al. (2017) show the differences in average socio-professional status by ethnic group, highlighting significant differences in level of school achievement and status on the job market.

Noumea, like many other Pacific cities, has remained for a long time a white city. Kanak remain very much in the minority in the Greater Noumea (about 10% in the early 1950s). From decades following, the phenomenon of urbanization of the indigenous population has increased and stabilized since the 1980s. As shown on Figure 1, the share of the urban Kanak population continues to increase; within the agglomeration, Kanak account for about one in four inhabitants.

Figure 1. Evolution of Kanak population in cities.



Wallisians and Futunians are the third largest community in the population of New Caledonia (8.6%) after Kanak and Europeans. Coming from several waves of immigration since the 1940s but also a high birth rate among this population, they are now more numerous than in Wallis and Futuna. Wallisians and Futunians are mainly present in Greater Nouméa (12.29% of the population) and more particularly in the three communes of the suburbs (Mont-Dore, Dumbéa and Païta).

New Caledonia is also characterized by a high level of ethnic and social segregation, in particular in the Greater Nouméa agglomeration, which includes the four most populated municipalities of New Caledonia: Nouméa, Mont Dore, Païta, and Dumbéa. Some 60% of the population and 73% of the jobs in the archipelago are concentrated in this area. The southern neighborhoods, with a very small proportion of social housing, very good quality and significantly more expensive rental housing, are predominantly European, sharply contrast with the northern neighborhoods, which are predominantly Kanak and characterized by a relatively high proportion of unsanitary housing and social housing. For the sake of social justice, promoting mixed neighbourhoods could fight against socio-economic and spatial segregation. This issue often goes along with by mobility, due to the distance of some neighbourhoods to business and employment places: the cost, the unreliability and the unavailability of public transport and the cost of the automobile constitute major obstacles to access to employment. By applying the usual Duncan and Duncan index of dissimilarity for the two groups, European and Kanak, Bunel et al (2017) measure the degree of segregation in the urban area of Nouméa and obtain an index of 50.8. That means one have to change of neighborhoods more than 50% of Kanak in order to produce a distribution that matches that of the European.

2. Overview of the literature

To objectively measure discrimination in access to housing, as well as in access to employment or other markets, the method used in the international literature is the testing method, which consists in comparing the responses obtained in response to a property advertisement by two candidates who are similar in all respects except for the characteristic whose effect is to be tested. This method has been applied in the United States since the 1980s and has provided multiple experimental evidence of discrimination in access to housing, particularly for the most studied ethno-racial discrimination (Yinger, 1986; Page, 1995; Choi et al., 2005; Hanson & Hawley, 2011). It has also been applied, to a lesser extent, in many European countries: first in Sweden by Ahmed et al, (2008 and 2010), Bengtsson et al, (2012) and Carlsson & Eriksson (2014), then in Spain by Bosch et al (2010), in Italy by Baldini & Federici (2011), in Greece by Drydakis (2011), in Norway by Beatty and Sommervoll (2012), in Belgium, by Heylen et al (2015), in France by Acolin, Bostic, and Painter (2016), and in Germany by Auspurg, Hinz, and Schmid (2017). With the widespread use of the Internet and real estate ad sites, the correspondence test, which consists of sending fictitious request emails, has emerged as the most effective way to conduct tests on the housing market. In a recent overview, Flage (2018) identifies 29 scientific studies that have applied this method in 15 different countries. It concludes that candidates who report a foreign origin by the sound of their surname are on average half as likely to be invited to visit rented accommodation as majority candidates.

In this field of research, there has been an impressive increase in the number of publications. Most of these publications focus on proving the existence and measuring the intensity of discrimination. They highlight that minorities are victims of differential treatment in the real estate market. Overall, visible minority candidates are contacted less often and the number and quality of assets referred to them is lower.

For economists, in particular, the identification of discrimination indicates an anomaly in the functioning of the housing market and the existence and extent of such an anomaly is an interesting subject in itself. But it is clear that we must go further and explain the origin and causes of this type of anomaly if we want to be able to propose actions to effectively combat this type of problem. In this perspective, too little work is done on the determinants, let alone on how to fight discrimination.

We focus here on an essential determinant: the local socio-ethnic composition. This corresponds to the proportion of potential discriminated persons in the local population, which is frequently measured with segregation indices, such as Duncan and Duncan, which is one of the most widely used. Discrimination has multiple relationships with the local segregation thus measured. On the one hand, it is clear that strong discrimination on the basis of socio-ethnic origin can strengthen and amplify the processes that generate and maintain local ethnic segregation. On the other hand, local ethnic segregation can in turn influence the intensity of discrimination. We are interested in this particular

meaning of causality, which ranges from segregation to discrimination. When the potentially discriminated minority is very present locally, does this promote or limit discrimination? It seems to us that the answer to this question is not obvious. However, this is an important question if we want to know whether discriminatory behaviour in access to housing is more a role as an amplifier or attenuator of socio-spatial segregation.

Three sets of determinants have been given by the literature applied to the question of the effects of segregation on discrimination. These determinants have been given successively by research studies that have analysed the existence of discrimination in the housing market. Early studies have generally shown that discrimination in the housing market can vary depending on the characteristics of the landlord, the type of property rented, the signal of social integration and/or economic stability transmitted by the applicant. The intensity of discrimination (D1) then depends on many factors that are not necessarily related to the local socio-ethnic composition of the neighbourhood of residence. Discriminated populations are discriminated against Becker-style by housing providers, to which Arrow-Phelps is added when minorities are presumed to be occupants of lower quality housing. These studies suggest that minorities can be discriminated against regardless of the social and ethnic composition of the neighbourhood. In line with Scheling's (1971) model of residential segregation without any discriminatory behaviour in the housing market, discrimination can be considered independent of the socio-ethnic composition of the territory.

Hypothesis 1. *Ethnic minorities are discriminated against in the housing market for any social and ethnic composition of the neighbourhood of residence*

In the United States, the first studies to take into account the ethnic environment at a disaggregated level are those of Yinger (1986), Page (1995) and Roychoudhury & Goodman (1996). For Yinger, the root cause of discrimination is economic: real estate agents discriminate to avoid racial prejudice for their white clients. This is the hypothesis of racial prejudice suffered by the clientele. Ondrich et al (1999) clearly indicate that "If an agent's customer base is largely white, he may discriminate in order to appease actual and potential customers, keeping the group that supplies most of his business feeling comfortable". This is customer discrimination as identified by Neumark et al. (1996) in the labour market. Landlords and real estate agents will discriminate less against minorities in neighbourhoods where they are strongly represented because they will consider that these spaces constitute neighbourhoods adapted to the lives of these minorities. According to this mechanism (D2), there is a mechanical link between the local socio-ethnic composition and the intensity of discrimination. The minority group will potentially be all the more discriminated against as the majority group represents a significant proportion of the local population.

Hypothesis 2. *Due to racial prejudice, there is a growing monotonous link between the proportion of residents from the majority population and the intensity of discrimination in access to housing.*

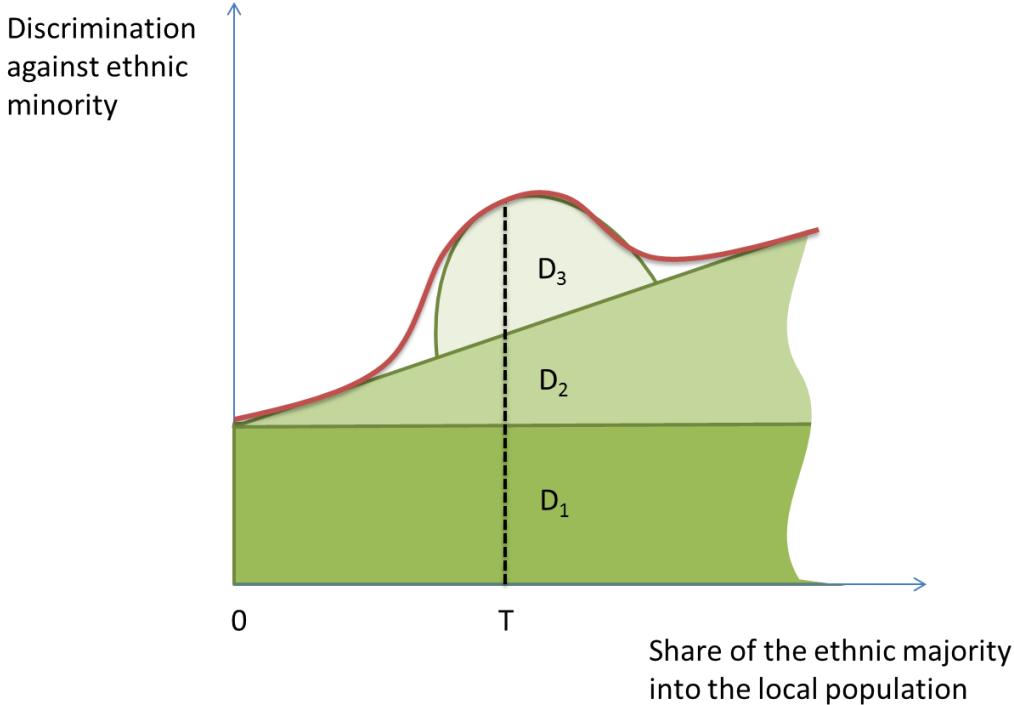
In Schelling's (1971) models, the location choices of socio-ethnic groups are not linear. There is a tipping point corresponding to a given proportion of the minority group beyond which members of the majority group will make the choice to leave the neighbourhood irreversibly. If landlords and real estate agents have this model in mind, they will try to protect themselves from the risk of losing their customers by discriminating more strongly against the minority when its proportion approaches the tipping point. Once the threshold is exceeded, it is no longer useful for owners to discriminate against minorities. This suggests a non-linear relationship around the tipping point. This hypothesis of non linearity (D3) has been confirmed by numerous empirical studies in the United States. Page (1995) showed that the relationship was non-linear, around a tipping point level of around 20%. Discrimination increases until the share of the African-American minority reaches this critical mass, then declines sharply. Ondrich et al (1999) use indicator sets for the proportion of households from the minority group of 0 to 20% and above 20% in the belief that real estate agents will change discriminatory behaviour around this threshold for fear of losing their clients from the majority white group. As soon as the proportion of residents from the black minority group exceeds the threshold, the incentive to discriminate disappears. The study by Card et al (2008) is probably the one that most convincingly confirmed the discriminatory consequences of the tipping point hypothesis by using direct observations of household residential mobility. It places the tipping point at a variable level depending on the city, usually between 5 and 20%. This will be confirmed by the work of Hanson and Hawley (2011), for whom discrimination is becoming more pronounced around the "tipping points", corresponding to a share of the population from the majority group of between 80% and 95%. Hanson and Santas (2014) using larger samples will in turn confirm that landlords begin to discriminate strongly when the proportion of people from the minority group becomes too large for them.

Hypothesis 3. *There is a Schelling tipping point beyond which the socio-ethnic composition of the neighbourhood can change. To protect themselves against this, suppliers discriminate significantly below this threshold and they stop discriminating beyond it. The result is a local area of non-linearity in the relationship between segregation and discrimination.*

These three sets of determinants are perfectly compatible with each other. We represent them in the diagram below, assuming that they can be combined. The overall relationship between the majority group's share in a given neighbourhood and the intensity of discrimination. In a plan where the share of the majority group in the local population is shown on the abscissa and the extent of discrimination

on the ordinate, the combination of the three hypotheses leads to a particular profile: the curve has a positive ordinate (D_1), it is generally monotonous increasing (D_2) with a local area of non-linearity in case of the presence of a tipping point (D_3) (figure 2).

Figure 2. The segregation effect on discrimination



All this work is American. In European countries, there is much less studies providing evidence of a relationship between discrimination and the ethnic composition of the neighbourhood. Auspurg, Hinz, and Schmid (2017) found no significant discrimination toward Turkish applicants in Germany in area where the proportion of Turks is low. Bunel et al (2017) found no significant discrimination toward Kanak in New Caledonia in neighbourhoods where the proportion of Kanak is higher than 25%. Baldini and Federici (2011) in Italia, Carlsson and Eriksson (2014) in Sweden and Acolin, Bostic, and Painter (2016) show regional or local variations in the level of discrimination and suggest that these variations could be explained by the demographic composition of the places. To our knowledge, no study in the European context provides statistical proofs of a relationship between discrimination and the ethnic composition of the neighbourhood.

2. Experimental Protocol and Data Collection

The experiment is an extension of the one conducted by Bunel et al. (2017) in Greater Nouméa between October 2015 and February 2016. The second part of the experiment that took place one year later, between October 2016 and February 2017. It allows to collect more observations and to add new profiles.

The test is conducted to determine access to private housing for rent and therefore do not covers access to social housing and private homes which are indeed rare in the area. We tested all ads for apartments for rent in Greater Nouméa published on the reference site <http://www.immobilier.nc/>, which centralizes all real-estate offers in New Caledonia.⁸ The applicants for rental housing were men, making their Kanak, Wallisian or European origin known through their surnames and first names. The choice of the surnames and first names corresponds to credible and realistic identities. They are among the most common first names for this age-group and for the community to which they belong. Surnames unambiguously indicate that a person is of Kanak, Wallisian or European background. The order of the response of each type of applicant was randomly changed daily throughout the data collection period. The test consisted of ending short and interrogative e-mails in response to ads published with a view to requesting a housing unit visit. The following messages were sent:

Dear Sir or Madam:

Your ad fits the requirement that I am seeking. I would like to arrange a visit to see the apartment.

What documents do you require?

Thank you,

First Name and Surname (our translation)

In order to differentiate statistical discrimination from discrimination based on preference we crossed the ethnicity signal with a signal concerning the financial and professional stability of the applicant. The following sentence was added to messages sent by some of our fictitious applicants: “I am a civil servant and I have just moved to Noumea.” This unambiguously signalled employment stability and on average a higher salary, given the indexation policy that exists in this area. To control for the implicit signal of the move from metropolitan France, we also add a Kanak applicant who indicates a return from metropolitan France.

As such, four rental applicant profiles were created in the first wave of the experiment (A—European, B—European civil servant, C—Kanak, and D—Kanak civil servant). Two applicant profiles were added

⁸ The internet is not the only channel through which housing offers are advertised. Other channels such as newspapers and social networks were not taken into account in this study. In addition, in the case of real estate agencies, we retained only one offer per agency to avoid detection.

in the second wave of the experiment (E—Kanak back from metropolitan France and F—Wallisian). In the end, our base contained 3,762 responses to 741 real-estate ads ($4 \times 342 + 6 \times 399$).⁹

The geographical area we are considering is composed of the city of Nouméa and the municipalities of Païta, Mont-Doré and Païta. Nouma is a relatively dense city composed of 8 sectors subdivided into 37 districts. We have grouped these neighbourhoods and the three neighbouring cities into 14 homogeneous units according to by grouping the least populated contiguous areas.

3. Results

Preliminary observations

Table 1 shows the results of landlords' responses to our applications for each wave of test separately and the aggregate result for the two waves. The ranking of applicants who receive the more responses is similar in both waves. The European civil servant receives the highest rate of positive responses (69%), followed by the European applicant without stability signal (66%), the Kanak civil servant (60%) and the Kanak without stability signal (50%). With regard to the new applicants of the second wave, we find that the Kanak who signals a recent return from metropolitan France receives a positive response rate of 52%. The Wallisian applicant is the least contacted of the applicants with a positive response rate of 43%.

Table 1: Positive responses by wage and by applicant

	(1) European		(2) European civil servant		(3) Kanak civil servant		(4) Kanak		(5) Kanak back from metropolitan France		(6) Wallisian	
	mean	Sd	mean	sd	mean	sd	Mean	sd	mean	sd	mean	sd
Positive response rate (first wave)	67.58	46.88	70.00	45.90	65.36	47.65	54.10	49.91				
<i>Observations</i>	330		330		332		329					
Positive response rate (second wave)	64.16	48.01	68.17	46.64	54.33	49.90	47.37	49.99	51.63	50.04	42.61	49.51
<i>Observations</i>	399		399		300		399		399		399	
Positive response rate	65.71	47.50	69.00	46.28	60.13	49.00	50.41	50.03	51.63	50.04	42.61	49.51
<i>Observations</i>	729		729		632		728		399		399	

⁹ 12 ads for which the landlord call the applicants without leaving a message are excluded of the sample.

Figure 3: Positive response rates by profile of applicant

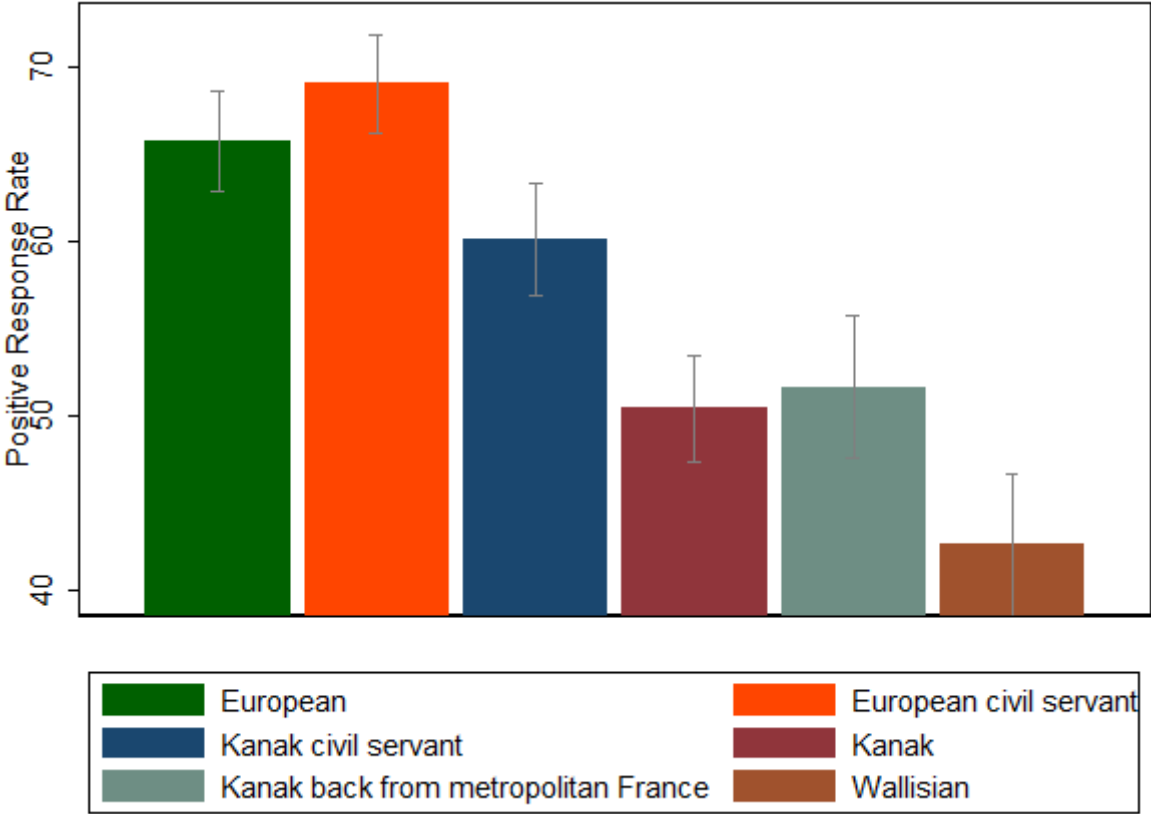


Table 2 compares the positive response rates received by the different profiles of applicants. As Bunel et al. (2017) show, the effect of the stability signal appears to be more valued by landlords for a Kanak than for an European applicant: the difference in response rate is 3 percentage points between the two European applicants against 10 percentage points between the two Kanak applicants. The Kanak civil servant has then a 9 percentage points lower rate of response than his European counterpart. It is a smaller difference than the 15 percentage points difference between the European and Kanak applicants without stability signals.

These results are in line with the coexistence of two types of discrimination. The difference of response rate between Europeans and Kanak that decreases sharply with the stability signal, such as being civil servant, indicates the presence of statistical discrimination. The significant difference between the European and the Kanak civil servant applicant suggests, to a less extent, existence of a discrimination based on preference.

The Kanak applicant who signals a recent return from metropolitan France gets a small increase in his response rate compared to the Kanak applicant without any signal. The response rate of the Wallisian applicant is 26 percentage points lower than that of the European civil servant and 23 percentage points lower than that of the European applicant. The response rate of the Wallisian is also 8 percentage points lower than the response rate of the Kanak applicant.

We thus find high levels of discrimination in line with works of Carpusor Adrian G. and Loges William E. (2006) who find a 33 percentage points lower response rate for African-Americans in the US or Ali M. Ahmed and Hammarstedt (2008) who find a 24.8 percentage point lower response rate for Arabic/Muslim male names compared to Swedish male names in Sweden.

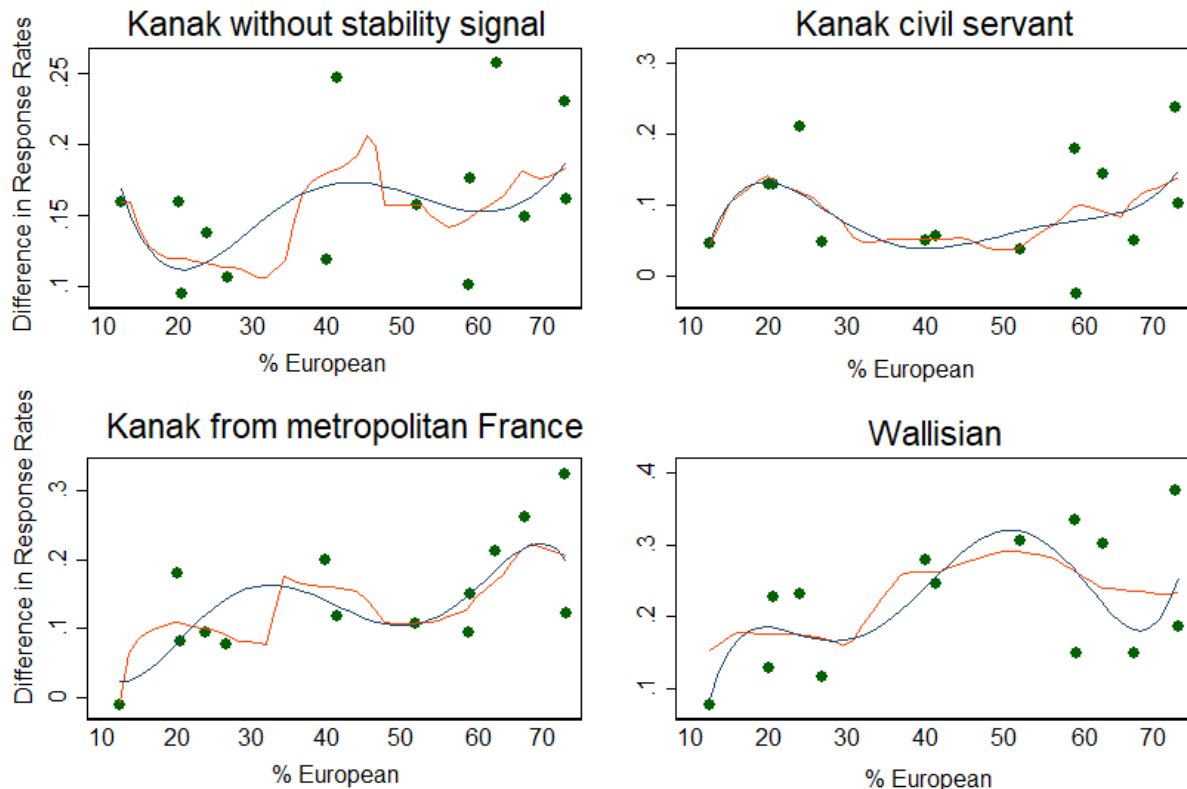
Table 2: Differences in the Success Rates of Applicants

	Deviation (in Percentage Points)	Standard- Error	Student	P-value
European civil servant versus				
European	3.29**	1.37	2.40	0.016
Kanak civil servant	8.87***	1.83	4.85	0.000
Kanak back from Metropolitan France	17.37***	2.45	7.09	0.000
Kanak	18.58***	1.79	10.39	0.000
Wallisian	26.39***	2.56	10.33	0.000
European versus				
Kanak	15.29***	1.79	8.55	0.000
Wallisian	23.09***	2.56	9.04	0.000
Non-euro (Kanak or Wallisian)	18.06***	1.75	10.33	0.000

*** Significant at the 1%, ** the 5%, * the-10% levels. Standard errors are clustered at the landlord level.

We are now interested in the effect of the neighbourhood’s composition on discrimination. Graphics of figure 4 plot the relationship between the difference in response rates between ethnic minority applicants and European applicants with the same stability signal and the concentration of European in the neighbourhood. Despite the low number of points, there seems to be an increase of the discrimination towards the different profiles of non-European applicants when the concentration of Europeans increases.

Figure 4: Discrimination and concentration of Europeans



Notes: Differences in response rates between each profiles and the European applicant without stability signal are presented except for the Kanak civil servant whose response rate is compared to the European civil servant. Local polynomial smooth of the difference in response rates on the proportion of European in the neighbourhood are plotted in blue and red.

Results indicate that a Kanak has a 14 percentage points lower probability of obtaining a positive response compared to an European. The response probability of a Wallisian is even lower with a 4 percentage points reduction compared to the probability of a Kanak and a 19 percentage points reduction compared to the probability of an European applicant. Stability signals increase the probability for a Kanak to obtain a positive response of 7 percentage points for the quality of civil servant and by 4 percentage points for the recent return form metropolitan France. The stability signal affects to a lesser extent the European for whom the signal increases the probability of obtaining a positive response by 3 percentage points.

Econometric results: causes of variation in discrimination

We first estimate the simple model:

$$P(Y = 1|\alpha_a, K, W, C, X) = \Phi(\alpha_a + \beta_1 K + \beta_2 W + \beta_3 C + \beta_4 K C + \beta_5 W C + \beta_6 X)$$

Where Y equals 1 if the individual receive a positive response.

$$K = \begin{cases} 1 & \text{if the individual is Kanak} \\ 0 & \text{otherwise} \end{cases}$$

$$W = \begin{cases} 1 & \text{if the individual is Wallisian} \\ 0 & \text{otherwise} \end{cases}$$

Φ is the standard normal cumulative density function. α_a is a fixed effect that accounts for factors unique to each landlord that influence Y . C is a vector of neighbourhood characteristics thought to affect the level of discrimination. X is a vector of individual, landlord and housing characteristics that potentially affect the probability to obtain a positive response.

Hypothesis 1 is tested by estimating β_1 and β_2 and hypotheses 2 and 3 are tested by estimating β_4 and β_5 with different compositions of the vector C . Outcomes that are related to a same offer are not independent which is taken into account into the random effects probit. Intraclass correlation is around 0.8 which means that 80% of the variance of the probability of any of the fictitious applicants being contacted by the landlord is due to the behaviour of the landlord. The relevance of using random effects probit models are confirmed by likelihood ratio tests that reject the nullity of intraclass correlation at the 5% level.

Results presented in column (2) of table 3, indicate that a Kanak has a 14 percentage point lower probability of obtaining a positive response compared to an European. The response probability of a Wallisian is even lower with a 4 percentage points reduction compared to the probability of a Kanak and a 19 percentage points reduction compared to the probability of an European applicant. Stability signals increase the probability for a Kanak to obtain a positive response of about 8 percentage points for the quality of civil servant and by 4 percentage points for the recent return from metropolitan France. The stability signal affects to a lesser extent the European for whom the signal increases the probability of obtaining a positive response by 3 percentage points.

In column (3), we test the presence of a linear relationship between discrimination and concentration of Europeans (hypothesis 2). The variable % European which measures the location proportion of European in each neighbourhood is then introduced in vector C . In column (4), we test for an increase of the discrimination around the tipping point (hypothesis 3). This effect is caught by introducing the variable Dum % European >60 in vector C . We observe no significant linear relationship between discrimination and the concentration of Europeans. However results in column (4) indicate a significant increase of 7 percentage points of the discrimination towards the Kanak in neighbourhoods where the proportion of Europeans is higher than 60%.¹⁰ We observe the same pattern regarding the

¹⁰ We may note that a model that includes a break in the trend at 60% (not shown) indicates a change in the relationship around the tipping point: discrimination does not vary significantly with the neighbourhood composition before 60% but increases significantly above this point. Based on the information criteria we keep column (2) and thus a shift in the

discrimination towards the Wallisian applicant but this one is not significant. This can be explain by the lower number of observations on the Wallisian applicant.¹¹

In order to verify that the relationship is not due to a correlation between the concentration of Europeans and some other characteristics of the neighbourhood as the average rental price, we add in column (5) the log of the average rental price and its interaction with discrimination. The results are not dramatically modified by this introduction. The estimated coefficient on $\text{Kanak} \times \text{Dum \% European} > 60$ is still significant at the 10% level. The decrease in significance is due to an increase of the standard errors but not to a decrease of the estimated coefficients which can be explained by the collinearity between the average rental price and the concentration of Europeans. The parametric relationship that exists between discrimination and concentration of Europeans is shown in figure 5.

discrimination at the tipping point as our preferred specification. We may also note that a model that includes both a shift in the discrimination and a break in the trend at 60% (not shown) does not perform better in term of information criteria.

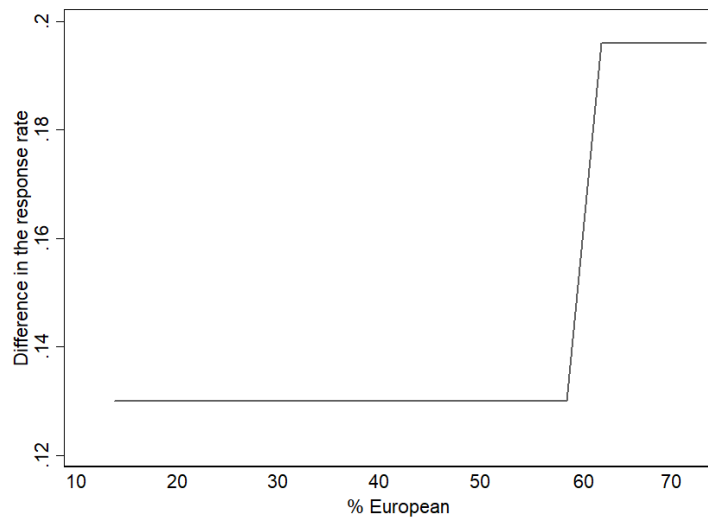
¹¹ The Wallisian applicant has been added on the test only on the second wave of the survey.

Table 3: Effect of the composition of the neighbourhood on discrimination (average marginal effects)

	(1)	(2)	(3)	(4)	(5)
Kanak	-0.143*** (0.017)	-0.145*** (0.017)	-0.115** (0.037)	-0.130*** (0.019)	-0.311 (0.985)
Civil servant	0.036** (0.015)	0.035** (0.016)	0.035** (0.016)	0.035** (0.016)	0.035** (0.016)
Kanak × Civil servant	0.041* (0.022)	0.039* (0.023)	0.039* (0.023)	0.039* (0.023)	0.039* (0.023)
Metropolitan	0.036* (0.019)	0.040** (0.019)	0.039** (0.019)	0.038** (0.019)	0.039** (0.019)
Wallisian	-0.187*** (0.021)	-0.187*** (0.021)	-0.150** (0.046)	-0.172*** (0.023)	-0.353 (0.985)
% European			-0.061 (0.045)	-0.070 (0.046)	-0.070 (0.046)
Kanak × % European			-0.024 (0.024)		
Wallisian × % European			-0.030 (0.034)		
Dum % European >60				0.025 (0.056)	0.028 (0.058)
Kanak × Dum % European >60				-0.066** (0.032)	-0.071* (0.043)
Wallisian × Dum % European >60				-0.070 (0.050)	-0.075 (0.058)
Control variables	NO	YES	YES	YES	YES
Log(average rental price in the neighbourhood)	NO	NO	YES	YES	YES
Kanak or Wallisian × log(average rental price in the neighbourhood)	NO	NO	NO	NO	YES
AIC	3444.898	3268.218	3269.467	3266.944	3268.895
Number of observations	3616	3453	3453	3453	3453

Notes: Standard errors clustered at the landlord level in parentheses. Control variables are: type of landlord (agency or individual), log of the average rent price in the neighbourhood, kitchen in the housing, type of housing (F1,F2...), order of the e-mail, set of e-mail, wave of the test (first or second wave).

Figure 5: Difference in positive response probability between the Kanak and the European applicant and neighbourhood composition.



4. Robustness

In this section we check for the relevance of alternative tipping points and specifications. In column (1) of table 5 we try to delimit more precisely the tipping point. Card, Mas, and Rothstein (2008) have shown that the tipping point was generally situated between 5% and 20% of Afro-Americans in the United-States. Neighbourhoods where the concentration of Europeans is very high may not be affected by a high level of discrimination because their diversity is not important enough so that a newcomer of a different ethnicity might lead the departures of individuals of the major ethnic group. We thus test for a lower level of discrimination in the 10% neighbourhoods with the highest levels of Europeans' concentration relatively to the 15% following neighbourhoods.¹² Results support a lower level of discrimination in the more concentrated neighbourhoods compared to those that are slightly more diversified. We also test in columns (2), (3) and (4) for shifts in the discrimination at different level of concentration (proportion of European of 25%, 35% and 50%). No significant shifts in the discrimination are observable at these levels.

¹² This distinction is, however, limited by the few number of neighbourhoods.

Table 4: Test for different tipping points

	(1)	(2)	(3)	(4)
Kanak	-0.130*** (0.019)	-0.154*** (0.031)	-0.141*** (0.026)	-0.138*** (0.022)
Civil servant	0.035** (0.016)	0.035** (0.016)	0.035** (0.016)	0.035** (0.016)
Kanak × Civil servant	0.039* (0.023)	0.039* (0.023)	0.039* (0.023)	0.039* (0.023)
Metropolitan	0.038** (0.019)	0.040** (0.019)	0.039** (0.019)	0.039** (0.019)
Wallisian	-0.172*** (0.023)	-0.207*** (0.036)	-0.178*** (0.032)	-0.174*** (0.027)
% European	-0.074 (0.046)	-0.198** (0.067)	-0.126** (0.062)	0.012 (0.061)
60 < Dum % European < 72	0.011 (0.062)			
Kanak × 60 < Dum % European < 72	-0.082** (0.040)			
Wallisian × 60 < Dum % European < 72	-0.076 (0.063)			
Dum % European ≥ 72	0.057 (0.072)			
Kanak × Dum % European ≥ 72	-0.044 (0.047)			
Wallisian × Dum % European ≥ 72	-0.060 (0.072)			
Dum % European > 25		0.122** (0.060)		
Kanak × Dum % European > 25		0.013 (0.031)		
Wallisian × Dum % European > 25		0.029 (0.043)		
Dum % European > 35			0.073 (0.063)	
Kanak × Dum % European > 35			-0.007 (0.028)	
Wallisian × Dum % European > 35			-0.015 (0.040)	
Dum % European > 50				-0.133*

				(0.070)
Kanak × Dum % European > 50				-0.016
				(0.027)
Wallisian × Dum % European > 50				-0.031
				(0.041)

AIC	3271.298	3267.373	3271.630	3267.791
Number of observations	3453	3453	3453	3453

Notes: Standard errors clustered at the landlord level in parentheses. Control variables are: type of landlord (agency or individual), log of the average rent price in the neighbourhood, kitchen in the housing, type of housing (F1,F2...), order of the e-mail, set of e-mail, wave of the test (first or second wave).

Conclusion

Despite its importance in political discourse, the disparity issue in New Caledonia lacks from precise measures of the current situation. However, policy debates on reducing inequalities and discrimination require specific analysis and thus would benefit from a better understanding of the factors that affect all kind of discrimination and segregation. This study, which aim is to analyse ethnic discrimination in the housing market, will contribute to a better understanding of the situation to drive social policies. More specifically, our objective is to give empirical evidence on the effect of neighbourhood composition on these discriminations. The analyses use the results of correspondence tests for European, Kanak and Wallisian applicants on more than 700 ads in the greater Noumea. Linking this data set to information about the neighbourhoods in which the rental properties are located, we are able to econometrically test, for the first time in an European context, the effect of the ethnic composition of the area on discrimination.

Our results show significant discrimination by landlords against e-mail inquiries from Kanak and Wallisian applicants in the rental housing market. Discrimination diminishes but does not disappear when the European applicant and the Kanak applicant give signals of stability. This result confirms the presence of statistical discrimination but also indicates, to a lesser extent, the presence of preference based discrimination.

We reject at the 5 percent level the homogeneity of discrimination towards the Kanak applicant according to the ethnic composition of the neighbourhood. We find that discrimination is higher in neighbourhoods where the share of Europeans is over 60%. In consequence, we provide new evidence of the presence of a tipping point in the composition of neighbourhoods and its impact on the level of discrimination.

References

- Acolin, Arthur, Raphael Bostic, and Gary Painter. 2016. "A Field Study of Rental Market Discrimination across Origins in France." *Journal of Urban Economics* 95 (September): 49–63. <https://doi.org/10.1016/j.jue.2016.07.003>.
- Ahmed, A. M., L. Andersson, and M. Hammarstedt. 2010. "Can Discrimination in the Housing Market Be Reduced by Increasing the Information about the Applicants?" *Land Economics* 86 (1): 79–90. <https://doi.org/10.3368/le.86.1.79>.
- Auspurg, Katrin, Thomas Hinz, and Laura Schmid. 2017. "Contexts and Conditions of Ethnic Discrimination: Evidence from a Field Experiment in a German Housing Market." *Journal of Housing Economics* 35 (March): 26–36. <https://doi.org/10.1016/j.jhe.2017.01.003>.
- Baldini, Massimo, and Marta Federici. 2011. "Ethnic Discrimination in the Italian Rental Housing Market." *Journal of Housing Economics* 20 (1): 1–14. <https://doi.org/10.1016/j.jhe.2011.02.003>.
- Beatty, Timothy K.M., and Dag Einar Sommervoll. 2012. "Discrimination in Rental Markets: Evidence from Norway." *Journal of Housing Economics* 21 (2): 121–30. <https://doi.org/10.1016/j.jhe.2012.03.001>.
- Bunel, Mathieu, Samuel Gorohouna, Yannick L'Horty, Pascale Petit, and Catherine Ris. 2017. "Ethnic Discrimination in the Rental Housing Market." *International Regional Science Review*, December, 016001761773906. <https://doi.org/10.1177/0160017617739065>.
- Card, David, Alexandre Mas, and Jesse Rothstein. 2008. "Tipping and the Dynamics of Segregation." *The Quarterly Journal of Economics* 123 (1): 177–218. <https://doi.org/10.1162/qjec.2008.123.1.177>.
- Carlsson, Magnus, and Stefan Eriksson. 2014. "Discrimination in the Rental Market for Apartments." *Journal of Housing Economics* 23 (March): 41–54. <https://doi.org/10.1016/j.jhe.2013.11.004>.
- Carpusor Adrian G., and Loges William E. 2006. "Rental Discrimination and Ethnicity in Names1." *Journal of Applied Social Psychology* 36 (4): 934–52. <https://doi.org/10.1111/j.0021-9029.2006.00050.x>.
- Cutler, D. M. and E. L. Glaeser. 1997. "Are Ghettos Good or Bad?" *Quarterly Journal of Economics*, 112, 827–872.
- Cutler, D. M., E. L. Glaeser, and J. L. Vigdor. 1999. "The Rise and Decline of the American Ghetto," *Journal of Political Economy*, 107, 455–506.
- Ewens, Michael, Bryan Tomlin, and Liang Choon Wang. 2014. "Statistical Discrimination or Prejudice? A Large Sample Field Experiment." *Review of Economics and Statistics* 96 (1): 119–34. https://doi.org/10.1162/REST_a_00365.
- Galster G.C. and Carr J. H. (1991). "Housing Discrimination and Urban Poverty of African-Americans". *Journal of Housing Research*, Vol. 2, No. 2 (1991), pp. 87-123

Galster, George C. (1992). "Research on Discrimination in Housing and Mortgage Markets: Assessment and Future Directions" *Housing Pol. Debate*, 3 (2), 639–683.

Gorohouna, Samuel, and Catherine Ris, 2013, "Decomposing differences in employment outcomes between Kanak and other New Caledonians: how important is the role of school achievement?", *Australian Journal of Labour Economics*, 16 (1), 115-135.

Hanson, A. & Santas, M. (2014). Field experiment tests for discrimination against hispanics in the U.S. rental housing market. *Southern Economic Journal*, 81(1), 135–167.

Hanson, Andrew, and Zackary Hawley. 2011. "Do Landlords Discriminate in the Rental Housing Market? Evidence from an Internet Field Experiment in US Cities." *Journal of Urban Economics* 70 (2–3): 99–114. <https://doi.org/10.1016/j.jue.2011.02.003>.

Harrison, Glenn W, and John A List. 2004. "Field Experiments." *Journal of Economic Literature* 42 (4): 1009–55. <https://doi.org/10.1257/0022051043004577>.

Heckman, James J. 1998. "Detecting Discrimination." *Journal of Economic Perspectives* 12 (2): 101–16. <https://doi.org/10.1257/jep.12.2.101>.

Neumark D, Roy J. Bank, Kyle D. Van Nort (1996). "Sex Discrimination in Restaurant Hiring: An Audit Study", *The Quarterly Journal of Economics*, Volume 111, Issue 3, 1 August 1996, Pages 915–941.

Ondrich, J., Stricker, A., Yinger, J., 1999. Do landlords discriminate? The incidence and causes of racial discrimination in rental housing markets. *Journal of Housing Economics* 8 (3), 185–204.

Ondrich, Jan, Stephen Ross, and John Yinger. 2003. "Now You See It, Now You Don't: Why Do Real Estate Agents Withhold Available Houses from Black Customers?" *Review of Economics and Statistics* 85 (4): 854–73. <https://doi.org/10.1162/003465303772815772>.

Page, M. (1995). Racial and ethnic discrimination in urban housing markets: Evidence from a recent audit study, *Journal of Urban Economics*. 38(2), 183–206.

Roychoudhury, C. & Goodman, A., (1996). Evidence of racial discrimination in different dimension of owner-occupied housing search. *Real estate Economics*, 24(2), 161-178.

Schelling T. C. 1971 "Dynamic models of segregation", *The Journal of Mathematical Sociology*, 1:2, 143-186, DOI: [10.1080/0022250X.1971.9989794](https://doi.org/10.1080/0022250X.1971.9989794)

van Kempen R. and Özüekren A. S.1998. "Ethnic Segregation in Cities: New Forms and Explanations in a Dynamic World", *Urban Studies*, Vol 35, Issue 10, pp. 1631 - 1656

Yinger, J. (1977). Prejudice and discrimination in the urban housing market (No. 9). Dept. of City and Regional Planning, Harvard University.

Yinger, J. 1986. "Measuring Racial Discrimination with Fair Housing Audits: Caught in the Act," *American Economic Review*, 76, 881–893.

Yinger, John. 1998. "Evidence on Discrimination in Consumer Markets." *Journal of Economic Perspectives* 12 (2): 23–40. <https://doi.org/10.1257/jep.12.2.23>.

Zhang J. 2011. "Tipping and residential segregation: a unified Schelling Model", *Journal of Regional Science*, vol 51, n°1, 2011, pp 167-193.

Annexe

Table A1: Characteristics of Offers

Characteristics of the offer and the company	First wave		Second wave	
	In % of Offers	Standard deviation	In % of Offers	Standard deviation
Type of landlord				
Agencies	19		11	
Individuals	81		89	
Size of apartments				
F1	16		20	
F2	38		39	
F3	30		26	
F4	16		15	
LOFT	0		0	
Game A	44		50	
Male landlord	51		50	
Kitchen in the house	92		99	
Rent	133,803	57,392	116,172	41,290
Surface	65	29	63	34
Average price per m2 (CFP franc)	2,192	548	2,089	694
Observations	1,368		2,394	

TEPP Working Papers 2019

19-3. Testing for redlining in the labor market

Yannick L'Horty, Mathieu Bunel, Pascale Petit

19-2. Labour market flows: Accounting for the public sector

Idriss Fontaine, Ismael Galvez-Iniesta, Pedro Gomes, Diego Vila-Martin

19-1. The interaction between labour force participation of older men and their wife: lessons from France

Idriss Fontaine

TEPP Working Papers 2018

18-15. Be healthy, be employed: a comparison between the US and France based on a general equilibrium model

Xavier Fairise, François Langot, Ze Zhong Shang

18-14. Immigrants' wage performance in the routine biased technological change era: France 1994-2012

Catherine Laffineur, Eva Moreno-Galbis, Jeremy Tanguy, Ahmed Tritah

18-13. Welfare cost of fluctuations when labor market search interacts with financial frictions

Elini Iliopoulos, François Langot, Thepthida Sopraseuth

18-12. Accounting for labor gaps

François Langot, Alessandra Pizzo

18-11. Unemployment fluctuations over the life cycle

Jean-Olivier Hairault, François Langot, Thepthida Sopraseuth

18-10. Layoffs, Recalls and Experience Rating

Julien Albertini, Xavier Fairise

18-9. Environmental policy and health in the presence of labor market imperfections

Xavier Pautrel

18-8. Identity mistakes and the standard of proof

Marie Obidzinski, Yves Oytana

18-7. Presumption of innocence and deterrence

Marie Obidzinski, Yves Oytana

18-6. Ethnic Discrimination in Rental Housing Market: An Experiment in New Caledonia

Mathieu Bunel, Samuel Gorohouna, Yannick L'Horty, Pascale Petit, Catherine Ris

18-5. Evaluating the impact of firm tax credits. Results from the French natural experiment CICE

Fabrice Gilles, Yannick L'Horty, Ferhat Mihoubi, Xi Yang

18-4. Impact of type 2 diabetes on health expenditure: an estimation based on individual administrative data

François-Olivier Baudot, Anne-Sophie Aguadé, Thomas Barnay, Christelle Gastaldi-Ménager, Anne Fargot-Campagna

18-3. How does labour market history influence the access to hiring interviews?

Emmanuel Duguet, Rémi Le Gall, Yannick L'Horty, Pascale Petit

18-2. Occupational mobility and vocational training over the life cycle

Anthony Terriau

18-1. Retired, at last? The short-term impact of retirement on health status in France

Thomas Barnay, Eric Defebvre

17-11. Hiring discrimination against women: distinguishing taste based discrimination from statistical discrimination

Emmanuel Duguet, Loïc du Parquet, Pascale Petit

17-10. Pension reforms, older workers' employment and the role of job separation and finding rates in France

Sarah Le Duigou, Pierre-Jean Messe

17-9. Healthier when retiring earlier? Evidence from France

Pierre-Jean Messe, François-Charles Wolff

17-8. Revisiting Hopenhayn and Nicolini's optimal unemployment insurance with job search monitoring and sanctions

Sebastien Menard, Solenne Tanguy

17-7. Ethnic Gaps in Educational Attainment and Labor-Market Outcomes: Evidence from France

Gabin Langevin, David Masclet, Fabien Moizeau, Emmanuel Peterle

17-6. Identifying preference-based discrimination in rental market: a field experiment in Paris

Mathieu Bunel, Yannick L'Horty, Loïc du Parquet, Pascale Petit

17-5. Chosen or Imposed? The location strategies of households

Emilie Arnoult, Florent Sari

17-4. Optimal income taxation with composition effects

Laurence Jacquet, Etienne Lehmann

17-3. Labor Market Effects of Urban Riots: an experimental assessment

Emmanuel Duguet, David Gray, Yannick L'Horty, Loic du Parquet, Pascale Petit

17-2. Does practicing literacy skills improve academic performance in first-year university students? Results from a randomized experiment

Estelle Bellity, Fabrices Gilles, Yannick L'Horty

17-1. Raising the take-up of social assistance benefits through a simple mailing: evidence from a French field experiment

Sylvain Chareyron, David Gray, Yannick L'Horty

16-8. Endogenous wage rigidities, human capital accumulation and growth

Ahmed Tritah

16-7. Harder, better, faster...yet stronger? Working conditions and self-declaration of chronic diseases

Eric Defebvre

16-6. The influence of mental health on job retention

Thomas Barnay, Eric Defebvre

16-5. The effects of breast cancer on individual labour market outcomes: an evaluation from an administrative panel

Thomas Barnay, Mohamed Ali Ben Halima, Emmanuel Duguet, Christine Le Clainche, Camille Regaert

16-4. Expectations, Loss Aversion, and Retirement Decisions in the Context of the 2009 Crisis in Europe

Nicolas Sirven, Thomas Barnay

16-3. How do product and labor market regulations affect aggregate employment, inequalities and job polarization? A general equilibrium approach

Julien Albertini, Jean-Olivier Hairault, François Langot, Thepthida Sopraseuth

16-2. Acces to employment with age and gender: results of a controlled experiment

Laetitia Challe, Florent Fremigacci, François Langot, Yannick L'Horty, Loïc Du Parquet, Pascale Petit

16-1. An evaluation of the 1987 French Disabled Workers Act: Better paying than hiring

Thomas Barnay, Emmanuel Duguet, Christine Le Clainche, Yann Videau

15-10. Optimal Income Taxation with Unemployment and Wage Responses: A Sufficient Statistics Approach

Kory Kroft, Kavan Kucko, Etienne Lehmann, Johannes Schmieder

15-9. Search frictions and (in) efficient vocational training over the life-cycle

Arnaud Chéron, Anthony Terriau

15-8. Absenteeism and productivity: the experience rating applied to employer contributions to health insurance

Sébastien Ménard, Coralia Quintero Rojas

15-7. Take up of social assistance benefits: the case of homeless

Sylvain Chareyron

15-6. Spatial mismatch through local public employment agencies. Answers from a French quasi-experiment

Mathieu Bunel, Elisabeth Tovar

15-5. Transmission of vocational skills at the end of career: horizon effect and technological or organisational change

Nathalie Greenan, Pierre-Jean Messe

15-4. Protecting biodiversity by developing bio-jobs: A multi-branch analysis with an application on French data

Jean De Beir, Céline Emond, Yannick L'Horty, Laetitia Tuffery

15-3. Profit-Sharing and Wages: An Empirical Analysis Using French Data Between 2000 and 2007

Noélie Delahaie, Richard Duhautois

15_2. A meta-regression analysis on intergenerational transmission of education: publication bias and genuine empirical effect

Nicolas Fleury, Fabrice Gilles

15_1. Why are there so many long-term unemployed in Paris?

Yannick L'Horty, Florent Sari

TEPP Working Papers 2014

14-14. Hiring discrimination based on national origin and the competition between employed and unemployed job seekers

Guillaume Pierné

14-13. Discrimination in Hiring: The curse of motorcycle women

Loïc Du Parquet, Emmanuel Duguet, Yannick L'Horty, Pascale Petit

14-12. Residential discrimination and the ethnic origin: An experimental assessment in the Paris suburbs

Emmanuel Duguet, Yannick L'Horty, Pascale Petit

14-11. Discrimination based on place of residence and access to employment

Mathieu Bunel, Yannick L'Horty, Pascale Petit

14-10. Rural Electrification and Household Labor Supply: Evidence from Nigeria

Claire Salmon, Jeremy Tanguy

14-9. Effects of immigration in frictional labor markets: theory and empirical evidence from EU countries

Eva Moreno-Galbis, Ahmed Tritah

14-8. Health, Work and Working Conditions: A Review of the European Economic Literature

Thomas Barnay

14-7. Labour mobility and the informal sector in Algeria: a cross-sectional comparison (2007-2012)

Philippe Adair, Youghourta Bellache

14-6. Does care to dependent elderly people living at home increase their mental health?

Thomas Barnay, Sandrine Juin

14_5. The Effect of Non-Work Related Health Events on Career Outcomes: An Evaluation in the French Labor Market

Emmanuel Duguet, Christine le Clainche

14_4. Retirement intentions in the presence of technological change: Theory and evidence from France

Pierre-Jean Messe, Eva Moreno – Galbis, Francois-Charles Wolff

14_3. Why is Old Workers' Labor Market more Volatile? Unemployment Fluctuations over the Life-Cycle

Jean-Olivier Hairault, François Langot, Thepthida Sopraseuth

14_2. Participation, Recruitment Selection, and the Minimum Wage

Frédéric Gavrel

14_1. Disparities in taking sick leave between sectors of activity in France: a longitudinal analysis of administrative data

Thomas Barnay, Sandrine Juin, Renaud Legal

13_9. An evaluation of the impact of industrial restructuring on individual human capital accumulation in France (1956-1993)

Nicolas Fleury, Fabrice Gilles

13_8. On the value of partial commitment for cooperative investment in buyer-supplier relationship

José de Sousa, Xavier Fairise

13-7. Search frictions, real wage rigidities and the optimal design of unemployment insurance

Julien Albertini, Xavier Fairise

13-6. Tax me if you can! Optimal non linear income tax between competing governments

Etienne Lehmann, Laurent Simula, Alain Trannoy

13-5. Beyond the labour income tax wedge: The unemployment-reducing effect of tax progressivity

Etienne Lehmann, Claudio Lucifora, Simone Moriconi, Bruno Van Der Linden

13-4. Discrimination based on place of residence and access to employment

Mathieu Bunel, Emilia Ene Jones, Yannick L'Horty, Pascale Petit

12-3. The determinants of job access channels: evidence from the youth labor market in Franc

Jihan Ghrairi

13-2. Capital mobility, search unemployment and labor market policies: The case of minimum wages

Frédéric Gavrel

13-1. Effort and monetary incentives in Nonprofit et For-Profit Organizations

Joseph Lanfranchi, Mathieu Narcy

The TEPP Institute

The CNRS Institute for Labor Studies and Public Policies (the TEPP Institute, FR n°3435 CNRS) gathers together research centres specializing in economics and sociology:

- L'**Equipe de Recherche sur l'Utilisation des Données Individuelles en lien avec la Théorie Economique** (Research Team on Use of Individuals Data in connection with economic theory), **ERUDITE**, University of Paris-Est Créteil and University of Paris-Est Marne-la-Vallée
- Le **Centre d'Etudes des Politiques Economiques de l'université d'Evry** (Research Centre focused on the analysis of economic policy and its foundations and implications), **EPEE**, University of Evry Val d'Essonne
- Le **Centre Pierre Naville** (Research on Work and Urban Policies), **CPN**, University of Evry Val d'Essonne
- Le **Groupe d'Analyse des Itinéraires et des Niveaux Salariaux** (Group on Analysis of Wage Levels and Trajectories), **GAINS**, University of the Maine
- Le **Centre de Recherches en Economie et en Management**, (Research centre in Economics and Management), **CREM**, University of Rennes 1 et University of Caen Basse-Normandie
- Le **Groupe de Recherche ANgevin en Économie et Management** (Angevin Research Group in Economics and Management), **GRANEM**, University of Angers ;
- Le **Centre de Recherche en Economie et Droit** (Research centre in Economics and Law) **CRED**, University of Paris II Panthéon-Assas ;
- Le **Laboratoire d'Economie et de Management Nantes-Atlantique** (Laboratory of Economics and Management of Nantes-Atlantique) **LEMNA**, University of Nantes ;
- Le **Laboratoire interdisciplinaire d'étude du politique Hannah Arendt** – Paris Est, **LIPHA-PE**
- Le **Centre d'Economie et de Management de l'Océan Indien**, « CEMOI », équipe d'accueil n°EA13, rattachée à l'Université de la Réunion
-

The TEPP Institute brings together 223 researchers and research professors and 100 PhD students who study changes in work and employment in relation to the choices made by firms and analyse public policies using new evaluation methods.