



HAL
open science

Climatic and anthropic forcings on the Holocene morpho-sedimentary evolution of the Cosson river (Loir-et-Cher)

Aurélien Lacoste, Clément Laplaige, Florent Hinschberger, Isabelle
Gay-Ovejero, Karna Coulibaly, Aurore Muracciole, Jean-Paul Bakyono,
Xavier Rodier

► To cite this version:

Aurélien Lacoste, Clément Laplaige, Florent Hinschberger, Isabelle Gay-Ovejero, Karna Coulibaly, et al.. Climatic and anthropic forcings on the Holocene morpho-sedimentary evolution of the Cosson river (Loir-et-Cher). Colloque TSMR - Transport Solide et Morphodynamique des Rivières, Nov 2017, Villeurbanne, France. hal-02330345

HAL Id: hal-02330345

<https://hal.science/hal-02330345>

Submitted on 25 Oct 2019

HAL is a multi-disciplinary open access archive for the deposit and dissemination of scientific research documents, whether they are published or not. The documents may come from teaching and research institutions in France or abroad, or from public or private research centers.

L'archive ouverte pluridisciplinaire **HAL**, est destinée au dépôt et à la diffusion de documents scientifiques de niveau recherche, publiés ou non, émanant des établissements d'enseignement et de recherche français ou étrangers, des laboratoires publics ou privés.

Climatic and anthropic forcings on the Holocene morpho-sedimentary evolution of the Cosson River (Loir-et-Cher)

A. Lacoste¹, C. Laplaige², F. Hinschberger¹, I. Gay-Ovejero¹, K. Coulibaly¹, A. Muracciole¹, J.-P. Bakyono¹, X. Rodier²

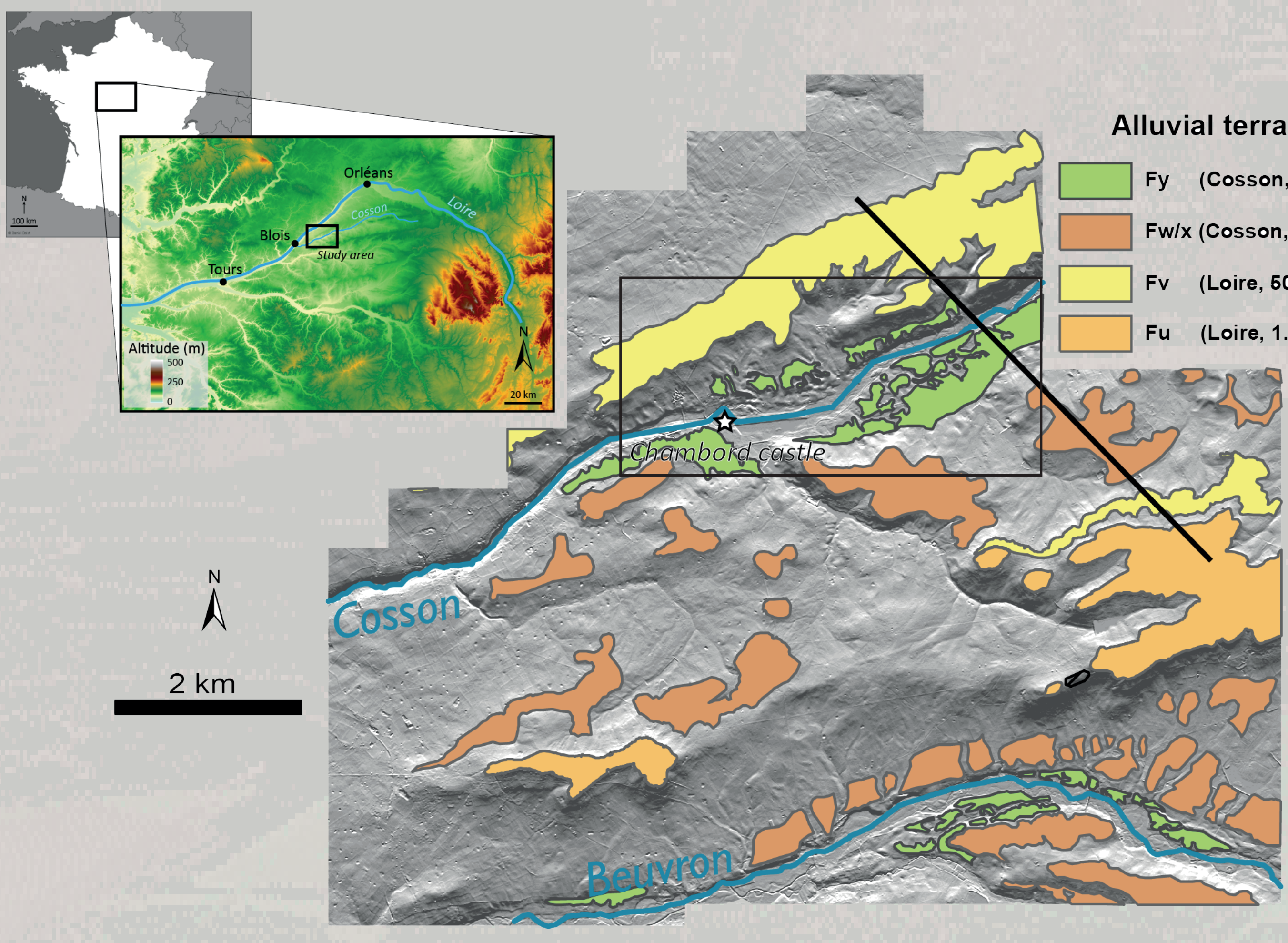
¹ E.A. 6293 GéoHydrosystèmes COntinentaux, Tours
² UMR 7324 CITERES-LAT, Tours

Transport Solide et Morphodynamique des Rivières, Villeurbanne, 8-9 Nov. 2017

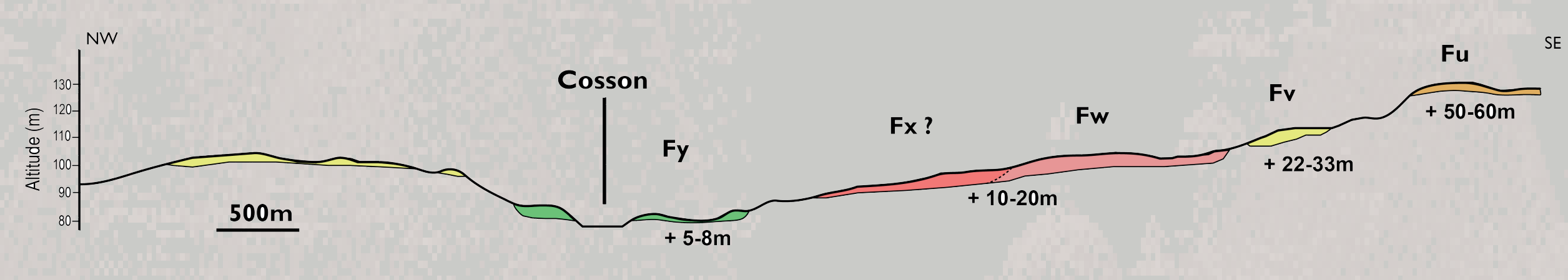
How to trace back the late Pleistocene/Holocene morpho-sedimentary evolution of the Cosson River ?
Is it possible to differentiate climatic from anthropic forcings in such an evolution ?

The Chambord Domain

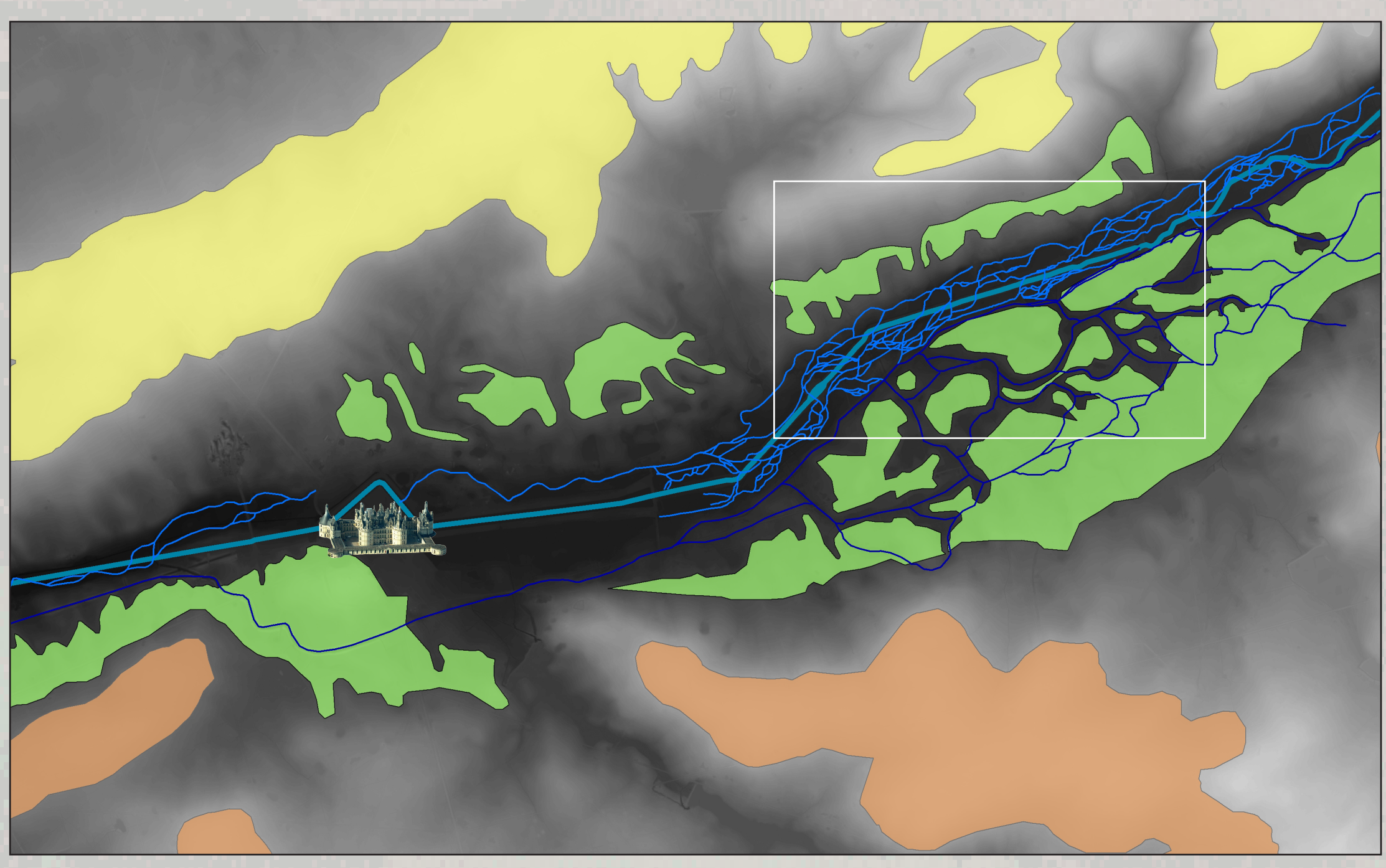
Terrace mapping and hydromorphological analysis from high-resolution DEM (airborne LiDAR)



Synthetic cross section



Palaeochannel network



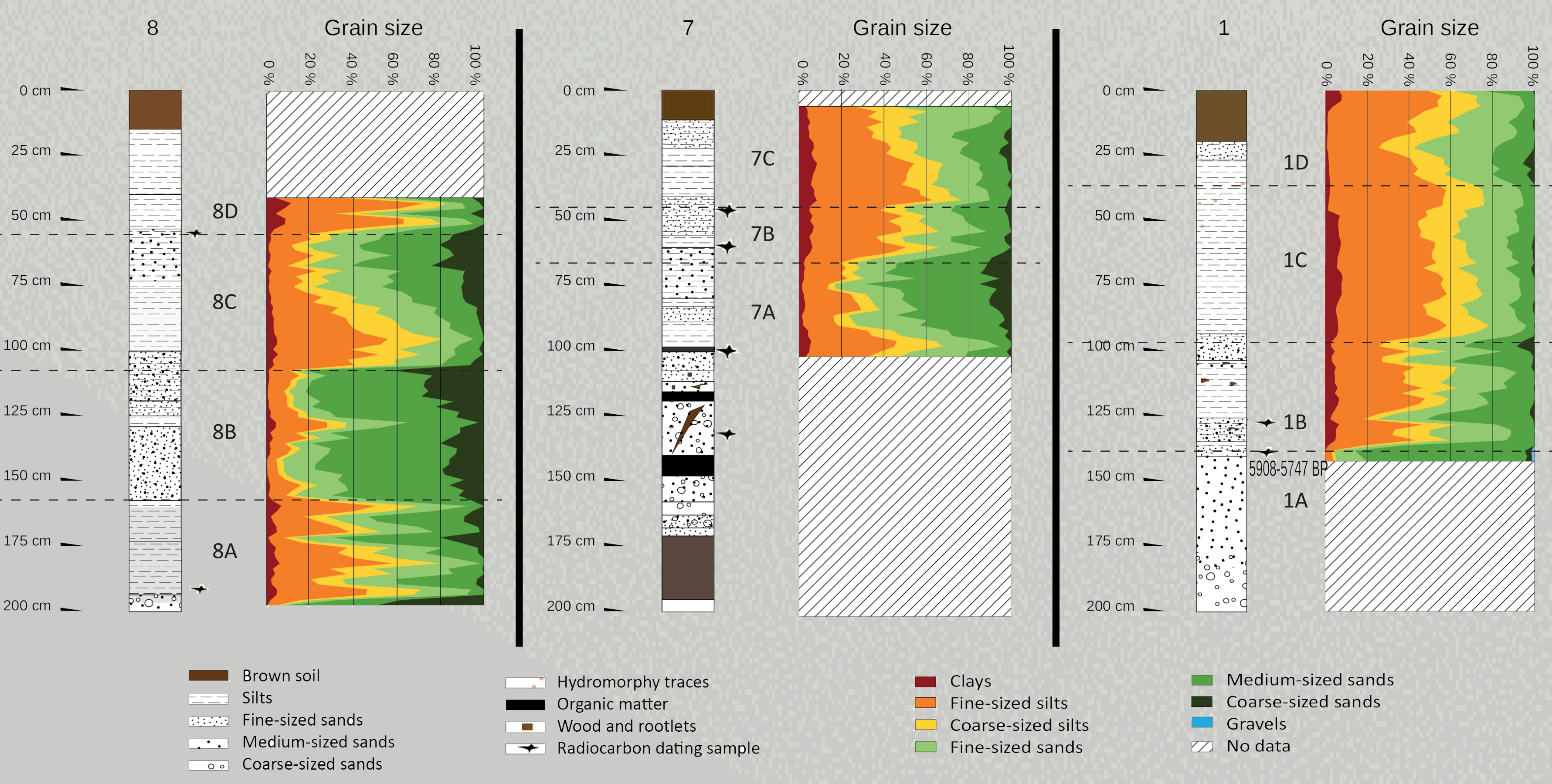
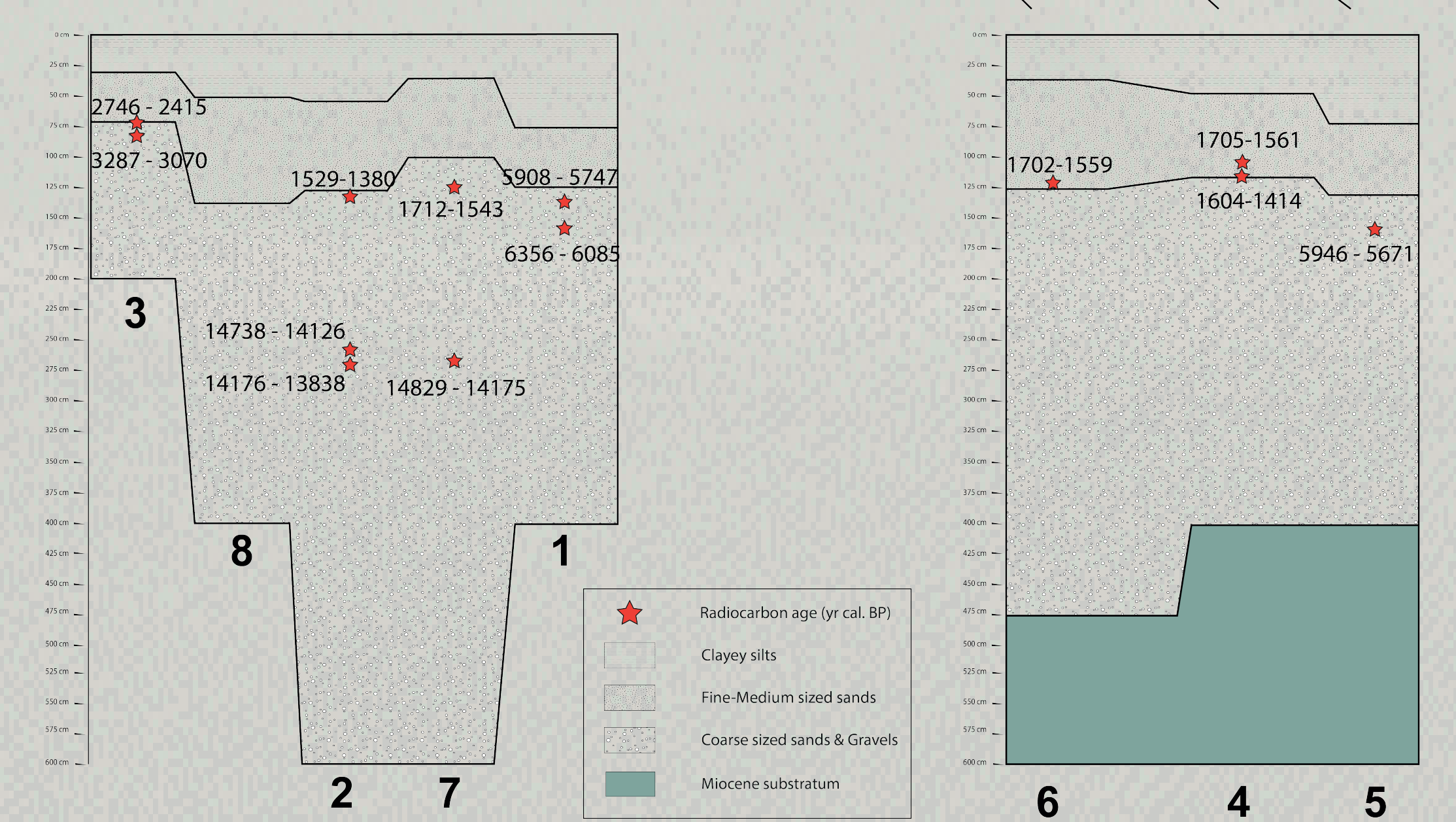
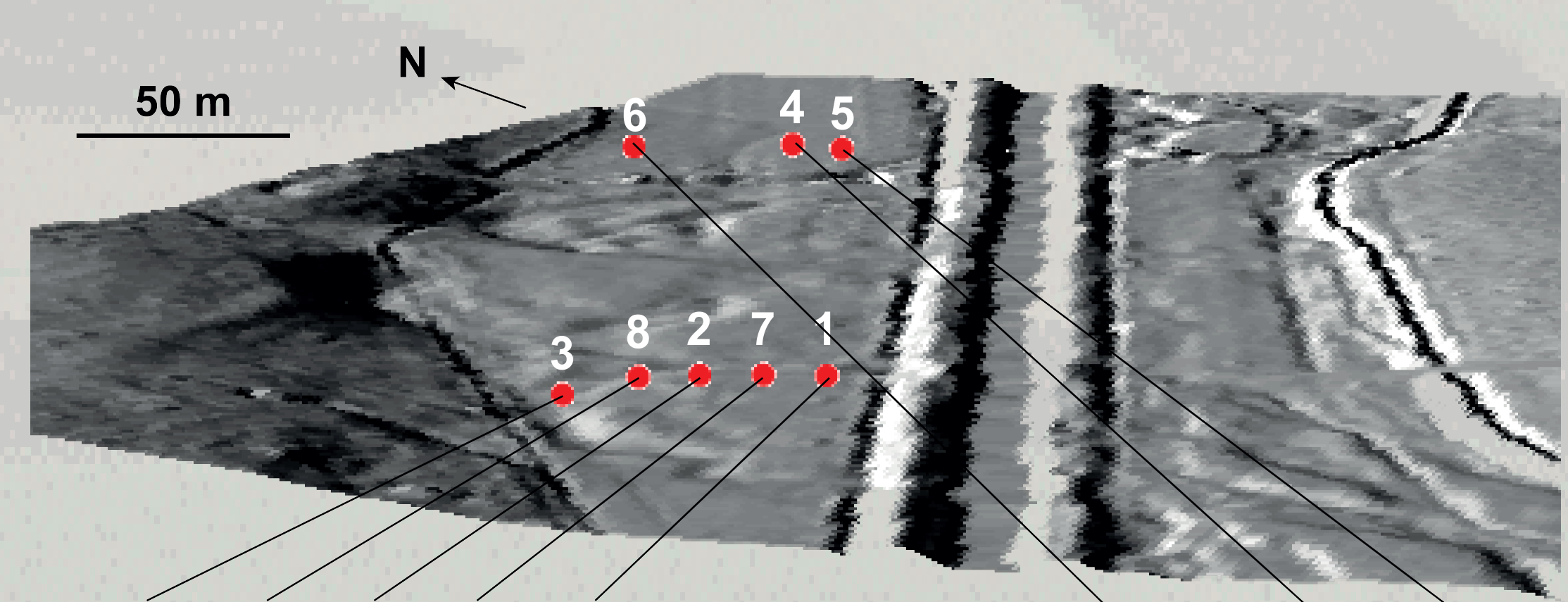
- Cosson River: tributary of the Loire River since the early Saalian Period (400 ka, Fw deposits)
- Channelling for castle-building purposes (15th-16th centuries)
- Evidence of Weichselian-Holocene multi-channel hydrological network

1st results - Sedimentology and Dating



Key dates:

- Weichselian - mid-Holocene (Bronze Age) coarse sedimentation, high fluvial energy
- Roman peak towards finer sediments



Distinct Sedimentation phases:

- lower units of high-frequency alternances (8A, 1B)
- periods of higher channel energy (8B, 7A)
- finer sediments with time?

Limits:

- hard to date: low organic content, clayey sediments
- challenging correlations: no magnetic data
- low geophysical contrast between units

The morpho-sedimentary evolution of the Cosson river is hard to constrain

Need of further data (ages, palynology, organic matter analyses) to discriminate climatic from anthropic influences