



**HAL**  
open science

## Parent-Of-Origin Effects in Autism Identified through Genome-Wide Linkage Analysis of 16,000 SNPs

Delphine Fradin, Keely Cheslack-Postava, Christine Ladd-Acosta, Craig Newschaffer, Aravinda Chakravarti, Dan E. Arking, Andrew Feinberg, M. Daniele Fallin

► **To cite this version:**

Delphine Fradin, Keely Cheslack-Postava, Christine Ladd-Acosta, Craig Newschaffer, Aravinda Chakravarti, et al.. Parent-Of-Origin Effects in Autism Identified through Genome-Wide Linkage Analysis of 16,000 SNPs. PLoS ONE, 2010, 5 (9), pp.e12513. 10.1371/journal.pone.0012513. hal-02329988

**HAL Id: hal-02329988**

**<https://hal.science/hal-02329988v1>**

Submitted on 23 Oct 2019

**HAL** is a multi-disciplinary open access archive for the deposit and dissemination of scientific research documents, whether they are published or not. The documents may come from teaching and research institutions in France or abroad, or from public or private research centers.

L'archive ouverte pluridisciplinaire **HAL**, est destinée au dépôt et à la diffusion de documents scientifiques de niveau recherche, publiés ou non, émanant des établissements d'enseignement et de recherche français ou étrangers, des laboratoires publics ou privés.

# Parent-Of-Origin Effects in Autism Identified through Genome-Wide Linkage Analysis of 16,000 SNPs

Delphine Fradin<sup>1,2</sup>, Keely Cheslack-Postava<sup>3</sup>, Christine Ladd-Acosta<sup>2</sup>, Craig Newschaffer<sup>4</sup>, Aravinda Chakravarti<sup>5</sup>, Dan E. Arking<sup>5</sup>, Andrew Feinberg<sup>2</sup>, M. Daniele Fallin<sup>1\*</sup>

**1** Department of Epidemiology, Bloomberg School of Public Health, Johns Hopkins University, Baltimore, Maryland, United States of America, **2** Department of Medicine, Center for Epigenetics, Institute for Basic Biomedical Sciences, Johns Hopkins University School of Medicine, Baltimore, Maryland, United States of America, **3** Robert Wood Johnson Foundation Health & Society Scholars, Columbia University, New York, New York, United States of America, **4** Department of Epidemiology, Drexel University, Philadelphia, Pennsylvania, United States of America, **5** Center for Complex Disease Genomics, McKusick-Nathans Institute of Genetic Medicine, Johns Hopkins University, Baltimore, Maryland, United States of America

## Abstract

**Background:** Autism is a common heritable neurodevelopmental disorder with complex etiology. Several genome-wide linkage and association scans have been carried out to identify regions harboring genes related to autism or autism spectrum disorders, with mixed results. Given the overlap in autism features with genetic abnormalities known to be associated with imprinting, one possible reason for lack of consistency would be the influence of parent-of-origin effects that may mask the ability to detect linkage and association.

**Methods and Findings:** We have performed a genome-wide linkage scan that accounts for potential parent-of-origin effects using 16,311 SNPs among families from the Autism Genetic Resource Exchange (AGRE) and the National Institute of Mental Health (NIMH) autism repository. We report parametric (GH, Genehunter) and allele-sharing linkage (Aspex) results using a broad spectrum disorder case definition. Paternal-origin genome-wide statistically significant linkage was observed on chromosomes 4 (LOD<sub>GH</sub> = 3.79, empirical  $p < 0.005$  and LOD<sub>Aspex</sub> = 2.96,  $p = 0.008$ ), 15 (LOD<sub>GH</sub> = 3.09, empirical  $p < 0.005$  and LOD<sub>Aspex</sub> = 3.62, empirical  $p = 0.003$ ) and 20 (LOD<sub>GH</sub> = 3.36, empirical  $p < 0.005$  and LOD<sub>Aspex</sub> = 3.38, empirical  $p = 0.006$ ).

**Conclusions:** These regions may harbor imprinted sites associated with the development of autism and offer fruitful domains for molecular investigation into the role of epigenetic mechanisms in autism.

**Citation:** Fradin D, Cheslack-Postava K, Ladd-Acosta C, Newschaffer C, Chakravarti A, et al. (2010) Parent-Of-Origin Effects in Autism Identified through Genome-Wide Linkage Analysis of 16,000 SNPs. PLoS ONE 5(9): e12513. doi:10.1371/journal.pone.0012513

**Editor:** Marie-Pierre Dubé, Université de Montréal, Canada

**Received:** March 15, 2010; **Accepted:** August 4, 2010; **Published:** September 2, 2010

**Copyright:** © 2010 Fradin et al. This is an open-access article distributed under the terms of the Creative Commons Attribution License, which permits unrestricted use, distribution, and reproduction in any medium, provided the original author and source are credited.

**Funding:** This work was partially funded by NIH 2P50HG003233 and CDC 5U01DD000183. The funders had no role in study design, data collection and analysis, decision to publish, or preparation of the manuscript. The collection of data and biomaterials that participated in the National Institute of Mental Health (NIMH) Autism Genetics Initiative has been supported by National Institute of Health grants MH52708, MH39437, MH00219 and MH00980; National Health Medical Research Council grant 0034328; and by grants from the Scottish Rite, the Spunk Fund, Inc., the Rebecca and Solomon Baker Fund, the APEX Foundation, the National Alliance for Research in Schizophrenia and Affective Disorders (NARSAD), and the endowment fund of the Nancy Pritzker Laboratory (Stanford); and by gifts from the Autism Society of America, the Janet M. Grace Pervasive Developmental Disorders Fund, and families and friends of individuals with autism. The collection data and biomaterials also come from the Autism Genetic Resource Exchange (AGRE) collection. This program has been supported by a National Institutes of Health grant MH64547 and the Cure Autism Now Foundation.

**Competing Interests:** The authors have declared that no competing interests exist.

\* E-mail: dfallin@jhsph.edu

## Introduction

Autism is a neurodevelopmental disorder that is manifested in early childhood and is characterized by impairments in reciprocal social interactions and language, and a restricted range of behaviors and interests. Autism is considered a spectrum disorder (ASD) with heterogeneity in symptom presentation. Inheritance clearly plays a major role in susceptibility to autism [1,2,3,4,5] (OMIM %209850), yet efforts to identify susceptibility genes have been complicated by the apparent heterogeneous and complex etiology of this disorder. While some important genetic discoveries have been made (reviewed in [6]), much of the heritable variation in autism remains unexplained.

Epigenetic factors, which are often heritable, yet not part of the DNA sequence, are one element which may contribute to this etiologic complexity. Imprinting is an epigenetic modification that

is parental origin specific, leading to preferential expression of a specific parental allele in somatic cells of the offspring [7]. Mechanisms such as DNA methylation, RNA-associated silencing and histone modification cause relative silencing of a specific parental allele. The vital role of imprinted genes in mammalian prenatal growth and development is shown most clearly by the abnormal development and early demise of embryos that inherit two copies of either a maternal or paternal genome, rather than the usual one of each [8]. In addition, the fact that many known imprinted genes are expressed in the brain (reviewed in [8]) suggests that such genes could play a role in autism, which is believed to have underpinnings in neuroanatomic differences that arise prenatally [9,10]. The genetic disorders Prader-Willi and Angelman syndromes, which result from defects in imprinting or the loss of expression of imprinted genes in the chromosomal region 15q11-q13 [11] are associated with autistic features and

diagnoses [12,13,14,15,16], and maternally transmitted abnormalities of chromosome 15 have been detected in autistic patients [12,17,18].

If imprinting plays a role in the heritable etiology of ASD, the power of linkage analyses to identify susceptibility loci may be improved by accounting for allelic parent-of-origin. This has been observed for specific autism-implicated genomic regions such as 7q, where both paternal and maternal allele sharing have been observed to account for the linkage to an autism locus in this region [19]–[20]. In a follow-up of previous linkage findings, Liu et al. reported partitioning of IBD sharing per parent on chromosomes 5, 16, 18 and 19, with both maternal and paternal peaks observed on chromosomes 5 and 19, suggesting the presence of multiple loci with parent-of-origin effects [21]. Arking et al. identified linkage and association with the *CNTNAP2* gene (contactin-associated protein-like 2) using genome-wide SNP analyses [22]. Further characterization of this signal showed maternal-specific parent-of-origin effects among heterozygotes.

To date, however, no genome-scale parent-of-origin-specific linkage analysis has been reported for ASD. Here we apply parent-of-origin linkage analysis to the genome-wide SNP data recently reported by Weiss et al. in a common set of multiplex autism families [23].

## Methods

### Subjects

The samples used here were previously described by Weiss et al. [23]. Nine hundred ninety three (993) families (896 affected sibling pairs) from the AGRE (Autism Genetic Resource Exchange) sample and 223 families (174 affected sibling pairs) from the NIMH (National Institute of Mental Health) Autism Genetics Initiative were included. AGRE families with a child diagnosed with an Autism Spectrum Disorder (ASD) based on evaluation by the Autism Diagnostic Interview-Revised (ADI-R) [24] were recruited from across the US. Further information on participant recruitment and study procedures has been described elsewhere [25] and is available on the program website ([www.agre.org](http://www.agre.org)). From AGRE, we considered children with autism, “not quite autism (NQA),” or “broad spectrum” as affected family members to encompass those with related disorders such as Aspergers syndrome and PDD-NOS. Information on participant recruitment and study procedures for the NIMH sample is available on the program website ([www.nimh.nih.gov](http://www.nimh.nih.gov)). We selected NIMH families with a child diagnosed with an Autism Spectrum Disorder based on evaluation by the Autism Diagnostic Interview-Revised (ADI-R) and ADOS instruments. The combined data set, consisting of 1,216 nuclear families, was used for genetic analyses. All families used in our analyses had at least one genotyped parent; 89.4% had genotypes for both parents.

All samples used in this study arose from investigations approved by the appropriate Institutional Review Boards for institutions where participants were recruited, evaluated, or where genotype data were generated. Written informed consent was obtained for all adult study participants; for children under age 18, both the consent of the parents or guardians and the assent of the child were obtained. This secondary analysis of de-identified data was considered to be exempt from IRB review.

### Markers

SNP genotyping was previously described [23]. The AGRE samples were genotyped on Affymetrix 5.0 chips at the Genetic Analysis Platform of the Broad Institute, using standard protocols. The NIMH autism samples were genotyped at the Johns Hopkins

Center for Complex Disease on the Affymetrix 500K (Nsp and Sty) and 5.0 platforms using similar standard protocols. We selected an extremely high quality set of SNPs for linkage analysis, including only SNPs genotyped in both data sets with 99.5% concordance and  $\leq 1$  Mendelian error. Linkage analysis involving high densities of markers, where clusters of markers are in linkage disequilibrium (LD), can lead to biased results [26]. To alleviate these concerns, we analyzed a pruned set of 16,311 highly polymorphic, high-quality autosomal SNPs that did not contain any two nearby markers correlated with  $r^2 > 0.1$ , providing a marker density of 0.25 cM. Genetic distances were taken from the Affymetrix Genetic Map ([www.affymetrix.com/estore/browse/products.jsp?productId=131459&categoryId=35906#1\\_3](http://www.affymetrix.com/estore/browse/products.jsp?productId=131459&categoryId=35906#1_3)) [26].

### Linkage analyses and simulations

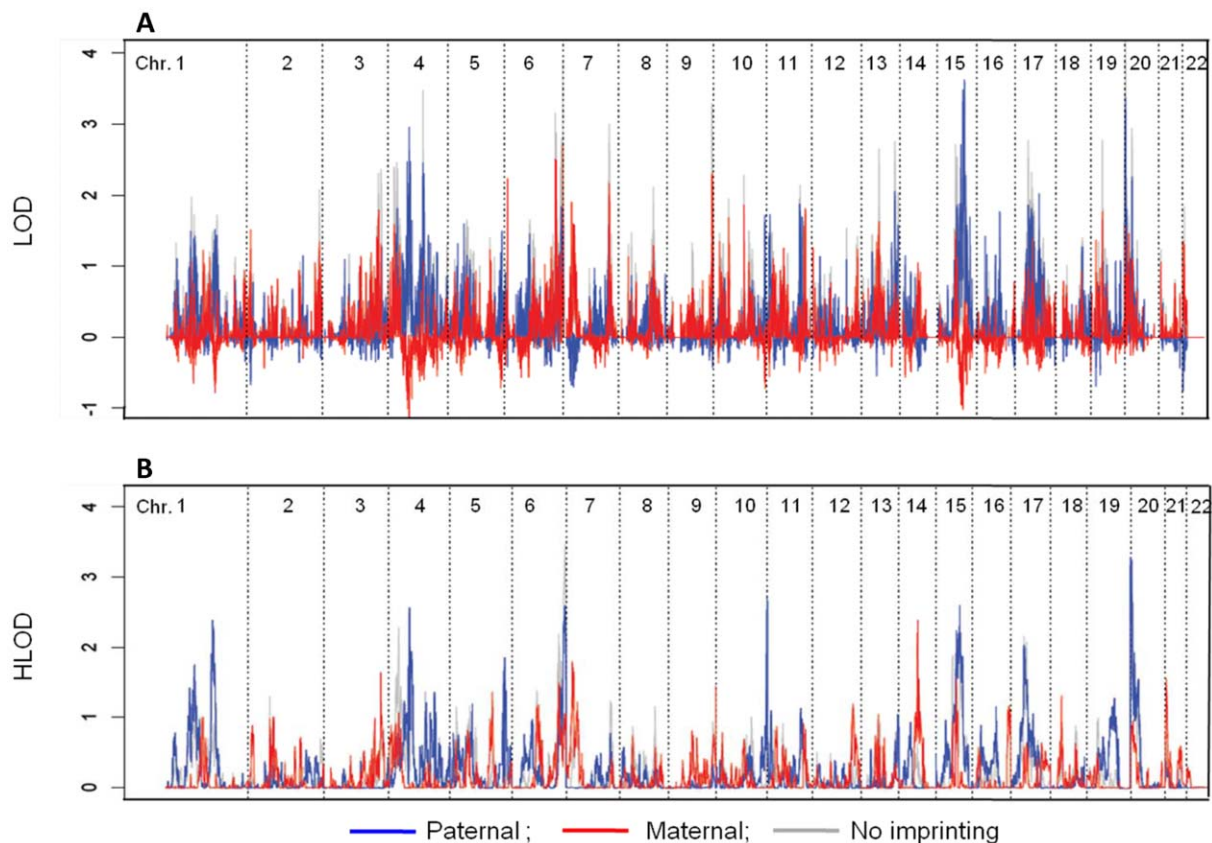
Parametric and non-parametric parent-of-origin linkage methods were applied. Parametric linkage analysis was conducted using GENEHUNTER-IMPRINTING 2.1 (GHI) [27], with 1216 informative families. Using GHI, for each chromosome, we began with a fully penetrant maternal or paternal model with no phenocopies. Allele frequencies were estimated using the founders, and LOD scores under heterogeneity (HLOD) were calculated at five equally spaced intervals between markers. For each suggestive linkage result (HLOD  $\geq 2$  for either maternal or paternal models), additional models were fit allowing for reduced penetrance or increased phenocopy rates to assess the sensitivity of the linkage signal to alternative parameters using the following procedure. We began by reducing the parent-specific penetrance at increments of 0.2 (*i.e.*, penetrances of 1, 0.8, 0.6, 0.4, 0.2) and by increasing phenocopy rates at similar increments. Empirical p values for these sensitivity results were estimated similarly to the initial genome-wide empirical p values (see below), but with the optimized parametric model applied for all locations.

For non-parametric linkage analysis, maximum likelihood estimates of allele sharing at each locus were computed using the ASPEX “sib\_ibd” command. The “sex\_split” option was implemented to evaluate evidence for linkage based on maternal and paternal sharing separately. 1070 affected sibling pairs were informative (had  $\geq 1$  parental genotype) for these analyses. LOD scores indicate the log ratio of the likelihood of the marker data at this position with the MLE estimate of the sibling recurrence risk ratio, versus the likelihood assuming a sibling risk ratio of 1.

Empirical genome-wide p values were calculated via simulation. The program Merlin [28,29] was used to generate replicates of families identical to those in our sample with respect to marker informativeness, spacing and missing data patterns, and with affection status preserved but no relationship between simulated genotypes and affection. Merlin assigned random genomes to founders according to allele frequencies at each marker, then passed chromosomes through the pedigree using the relationships specified in the original pedigree file and recombination fractions specified by our genetic map. Linkage analyses were then performed on these unlinked replicates and genome-wide empirical p values were estimated by extrapolating results for chromosome 1 to the whole-genome level, assuming chromosome 1 represents 0.1 of the genome. Empirical genome-wide p values reported here were based on 2,000 replicates.

## Results and Discussion

Genome-wide results for maternal and paternal linkage analyses via both parametric and non-parametric methods are shown in Figure 1. The highest HLOD and LOD signals on each chromosome are shown in Table 1. The final models for the



**Figure 1. Results of Genome-wide Linkage Analysis.** Panel A: Parametric results. Panel B: Allele sharing results. Maternal scores are shown in red; paternal scores are in blue; no-imprinting scores are shown in gray. doi:10.1371/journal.pone.0012513.g001

strongest linkage signals from sensitivity analyses of parametric models are shown in Table 2. Paternal peaks based on both parametric and allele-sharing analyses were observed on chromosomes 4 (rs6826933:rs17088473, HLOD = 3.79,  $p < 0.005$ ; LOD = 2.96,  $p = 0.008$ ; Table 1, Figures 1, 2), 15 (rs11855650:rs10520676, HLOD = 3.09,  $p < 0.005$ ; LOD = 3.62,  $p = 0.003$ ; Table 1, Figures 1, 2) and 20 (rs16999397:rs200888, HLOD = 3.36,  $p < 0.005$ ; LOD = 3.38,  $p = 0.006$ ; Table 1, Figures 1, 2). All  $p$  values reported reflect genome-wide testing based on simulation. Additional paternal peaks with HLODs  $> 2$  were observed on chromosomes 1, 6, 10, and 17 in the parametric analyses, with empirical genome-wide  $p$  values  $\leq 0.01$  (Table 1).

Although significant maternal peaks were observed in both parametric and allele-sharing methods, no consistency in signal was seen. A significant maternal peak was observed on chromosome 14 in parametric analyses (rs923485:rs1717789, HLOD = 2.38,  $p = 0.01$ ), although this was not observed in allele-sharing analysis. Maternal allele sharing peaks were observed on chromosomes 5, 6, 7, and 9 (Table 1), although these were not seen in parametric models.

Given the vital role of imprinted genes in development, the fact that many known imprinted genes are expressed in the brain, and evidence of overlapping features in autism and imprinting disorders, we investigated the effect of incorporating allelic parent-of-origin into an autosomal linkage scan for autism. To our knowledge, this is the most extensive linkage analysis for parent-of-origin effects in autism to date. We found the strongest evidence for parent-of-origin effects on chromosomes 4, 20 and 15, implicating sites where imprinted loci related to autism may reside.

The section of chromosome 4 located between markers rs6826933 and rs17088473 showed several significant results in our analysis and spans the region between 4q12-4q13.2. Recently, Weiss et al. found an association between one SNP (rs17088254,  $p = 8.5 \times 10^{-6}$ ) located on this region and autism using the same data without regard to parental origin. The strongest candidate gene in this region is *CLOCK*, which codes a protein regulating circadian rhythm and whose involvement in ASD was first proposed by Wimpory et al. [30]. The most consistent results reporting abnormal circadian rhythms in ASD concern the melatonin synthesis pathway. At least five independent groups detected abnormal melatonin levels in ASD [31,32,33,34]. Several lines of evidence suggest that melatonin could modulate neuronal networks by influencing both the strength and the circadian oscillation of neuronal transmission [35,36].

Analyses of a panel of microsatellite markers in 348 AGRE families from previously reported linkage analysis [21,37] also showed paternal allele sharing on chromosome 4 (Figure S1). However, the peak using the microsatellite panel was 29cM away from the SNP peak (D4S1591:GATA30B11, LOD<sub>pat</sub> = 2.96,  $p = 0.008$ ). The location of this microsatellite peak also showed linkage in the SNP data, but it was not the highest SNP linkage peak on chromosome 4.

A region of chromosome 15 (15q23-15q25.3) also shows paternal linkage. This region was previously implicated using traditional linkage analysis in these SNP data [23], though it this was not the strongest linkage signal in that analysis. A genome-wide assessment of structural abnormalities in 427 unrelated ASD cases found a microdeletion of 4,289,500bp on 15q23-q24.2

**Table 1.** Highest Linkage Peaks Per Chromosome.

Chr	Parametric (GHI)					Allele-Sharing (Aspex)				
	Map (cM)	No-imp HLOD	Pat. HLOD	Mat. HLOD	Pval**	Map (cM)	No-imp LOD	Pat. LOD	Mat. LOD	Pval**
1	156.55	0.66	<b>2.38</b>	0	0.01	168.67	0.76	1.52	-0.76	0.17
	164.99		<b>2.54 (1A)*</b>		0.01					
2	82.90	0.43	0.12	1.00	1.00	15.77	0.85	-0.66	1.52	0.21
3	189.11	1.03	0	1.64	0.22	192.74	1.67	-0.1	1.79	0.13
4	67.85		<b>2.55</b>		0.01	74.81	2.01	2.96	-0.95	0.008
	67.85	1.99	<b>3.79 (4A)</b>	0	<0.005	123.65	3.13	2.45	0.68	0.02
5	182.85	0.49	1.85	0	0.08	205.55	1.82	-0.42	2.24	0.05
6	177.24	3.46	<b>2.59</b>	1.01	0.01	188.29	3.87	1.15	2.72	0.02
	175.93		<b>2.72 (6A)</b>		0.01					
7	20.32	0.55	0	1.79	0.13	156.43	2.99	0.84	2.16	0.06
8	NA	<1	<1	<1	NA	120.57	1.952	0.63	1.29	0.31
9	158.19	0.73	0	1.44	0.76	156.77	2.00	-0.31	2.32	0.04
10	169.29	0.72	2.69	0	0.01	103.52	2.22	0.36	1.86	0.12
11	111.01	0.77	1.13	0	1.00	114.49	1.40	1.87	-0.48	0.08
12	134.99	0.30	0	1.19	1.00	29.46	0.80	1.14	-0.34	0.23
13	56.98	0.86	0.02	1.04	1.00	113.79	2.75	2.05	0.71	0.06
14	62.33	0.43	0	2.38	0.01	18.67	0.58	1.15	-0.56	0.37
15	79.68	1.78	<b>2.59</b>	0.03	0.01	92.16	3.52	3.62	-0.11	0.003
	64.61		<b>3.09 (15A)</b>		<0.005					
16	121.30	0	1.16	0	1.00	78.81	1.41	1.77	-0.35	0.10
17	45.23	2.15	2.03	0.58	0.01	81.45	1.56	2.02	-0.46	0.07
18	NA	<1	<1	<1	NA	91.97	1.33	1.27	0.06	0.3
19	92.91	0.16	1.27	0	0.92	37.73	2.75	0.99	1.77	0.13
20	3.38	3.04	<b>3.24</b>	0.83	<0.005	3.20	4.13	3.38	0.75	0.006
	0.40		<b>3.36 (20A)</b>		<0.005					
21	3.58	0.66	0.28	1.55	0.58	6.12	1.23	0.17	1.06	0.45
22	NA	<1	<1	<1	NA	2.25	0.60	-0.75	1.35	0.28

\*Optimal parametric model for this linkage signal (see Table 2).

\*\*Empirical genome-wide p values based on 5000 simulations.

doi:10.1371/journal.pone.0012513.t001

associated with ASD [38]. This region includes the *RASGRF1* gene, a homologue of the imprinted *rasgf1* in mouse [8]. The protein encoded by this gene is a guanine nucleotide exchange

factor (GEF). Functional analysis has demonstrated that this protein stimulates the dissociation of GDP from RAS protein. Studies of the similar gene in mice suggested that the Ras-GEF activity of this protein in the brain can be activated by Ca2+ influx, muscarinic receptors, and G protein beta-gamma subunit. Mouse studies also indicated that the Ras-GEF signaling pathway mediated by this protein may be important for long-term memory. Others genes in this region with plausible connections to autism risk include *NRG4* (neuregulin 4) and *CHRNA3/B4* (cholinergic receptor, nicotinic). Genes in the neuregulin[39] and cholinergic families[40] have already been implicated in autism risk. The 15q23-q25.3 region also encompasses the *MTHFS* (5,10-methylnyltetrahydrofolate synthetase) gene which is implicated in DNA methylation cycle and may be particularly important in an epigenetic mechanism of autism risk.

We have also reported a strong paternal linkage on chromosome 20p, which was previously implicated in the linkage analyses reported by Weiss et al[23]. In analyses of these data without consideration of parent-of-origin, this region achieved a LOD score in excess of 2.0. According our results using the same data set, this linkage is supported by paternal transmission. Deletions of

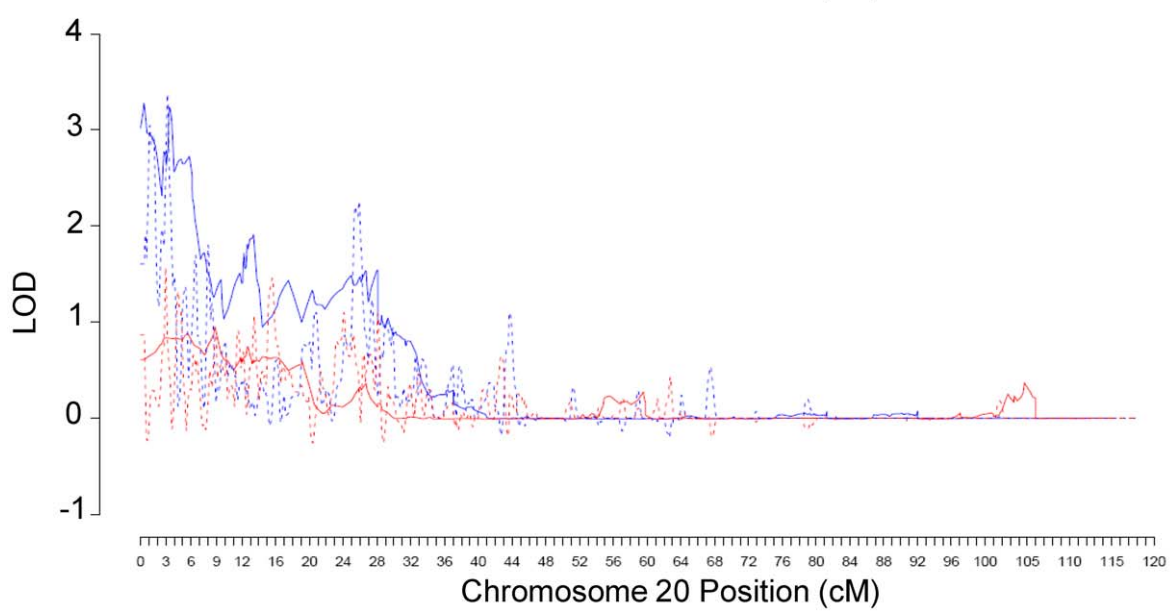
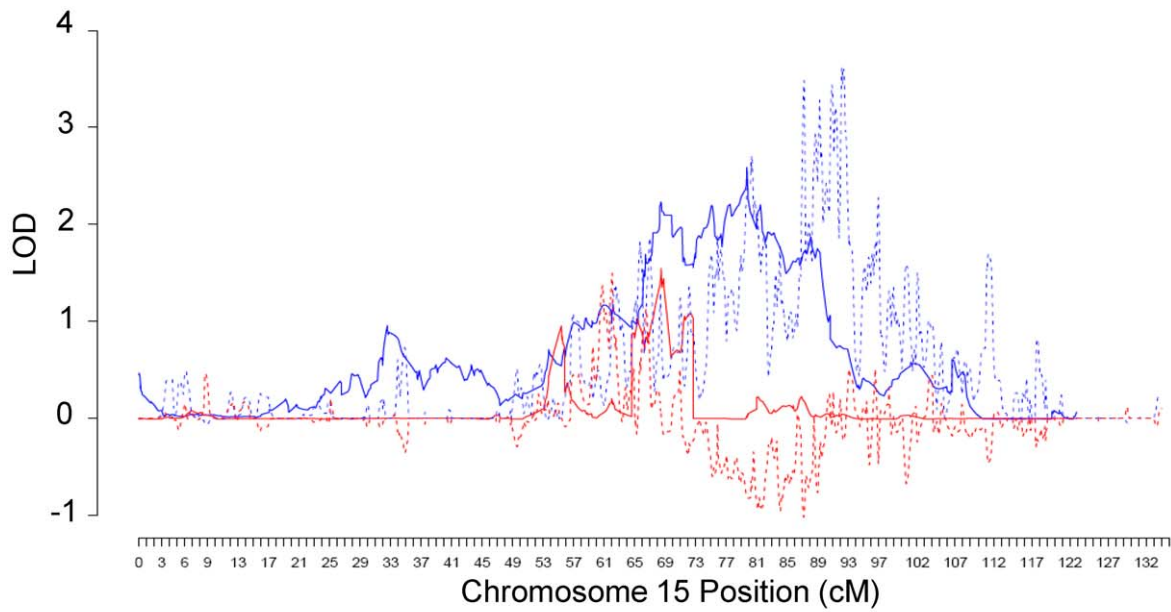
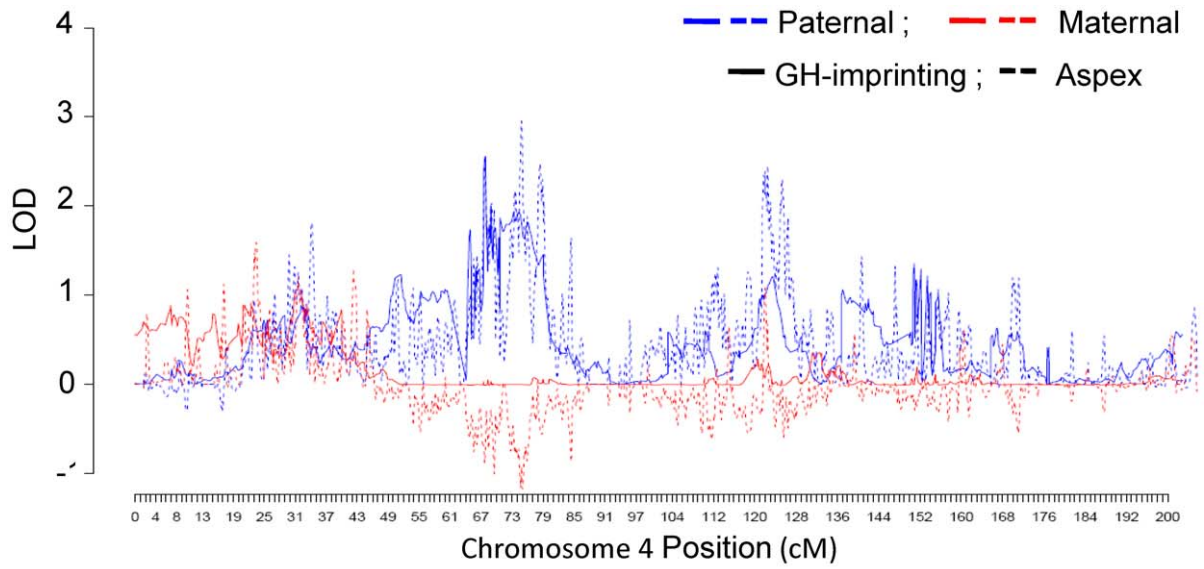
**Table 2.** Optimized Parametric Models.

	Model	P(+/+)*	P(d/+)	P(+/d)	P(d/d)
<b>Primary models</b>	<i>paternal</i>	0.001	0.999	0.001	0.999
	<i>maternal</i>	0.001	0.001	0.999	0.999
<b>Optimal models**</b>	<b>1A</b>	0.001	0.499	0.001	0.499
	<b>4A</b>	0.001	0.399	0.099	0.499
	<b>6A</b>	0.001	0.599	0.199	0.799
	<b>15A</b>	0.001	0.499	0.001	0.499
	<b>20A</b>	0.001	0.799	0.199	0.999

\*Paternally inherited allele named first. +: wild-type allele; d: disease allele; P: penetrance.

\*\*Parameter values for best linkage signal after exploratory sensitivity analysis.

doi:10.1371/journal.pone.0012513.t002



**Figure 2. Multipoint Parametric and Allele-sharing LOD scores on Chromosomes 4, 15 and 20.** Maternal scores are shown in red; paternal scores are in blue.

doi:10.1371/journal.pone.0012513.g002

the 20pter region have been reported in two distinct autism cases [41,42]. The first patient presented an interstitial deletion in 20p11.22-p11.23 whereas the second, a 3-year-old boy with a moderate to severe mental retardation and autistic behavior patterns, carried a deletion at 20pter-p12.2. Moreover, this linked region encompasses the *SNPH* (Syntaphilin) gene. *SNPH* interacts with the synaptic vesicle-associated protein synaptobrevin/VAMP and the plasma membrane-associated protein SNAP25 to form the SNARE complex, which is required for synaptic vesicle docking and fusion. Expression of this gene appears to be brain specific.

Other suggestive parent-specific linkage regions are located throughout the genome (on chromosomes 1, 5, 6, 7, 8, 9, 10, 13, 14, 17 and 21). The paternally linked region on chromosome 1 (1q23-1q24.2) was previously associated with autism. Wassink *et al* report a male child with autism having a maternal uniparental disomy (UPD) of chromosome 1 [43]. Moreover, in a previous genome wide linkage analysis, Bartlett *et al.* also found a linkage between the 1q23-1q24 region and autism using an AGRE sample [44].

A maternally linked region was observed on chromosome 5, with the peak at 5p13.1. Recent genome-wide association studies have reported risk loci for autism at 5p14.1 [45,46]. The Imprinted Gene Database ([www.geneimprint.com](http://www.geneimprint.com)) lists four predicted imprinted genes on chromosome 5; however the regions do not directly overlap the location detected by our analysis.

The signal found on 6q25.3-6q27 region was previously linked to autism [23,47,48]. Recently, Glessner *et al.* found that *PARK2* gene located on 6q25.2-6q27 was significantly enriched for CNVs and observed in the ASD cases only [49]. They identified a deletion of about 3 kb in *PARK2* allele inherited from father. *PARK2* is an ubiquitin-protein ligase, mutations of which cause autosomal recessive juvenile Parkinson's disease [50]. Moreover, several autism cases with subtle interstitial deletions in the q24-q26 region of the long arm of chromosome 6 have been reported [51]. Some imprinted genes have also been described in this 6q region like the *SLC22A* (solute carrier family 22) genes.

Two other groups have previously reported parent-of-origin linkage with autism for closely located loci on chromosome 7; one was a paternal contribution in the region 7q31.33-7q34 [19], the other showed a paternally derived locus more proximally located on 7q22.1-7q22.2 and a maternally derived locus on 7q32.1-7q32.2 [20]. In our analysis, the strongest chromosome 7 signal was at 156.43 cM on nearby 7q35 under the maternal model. While not our strongest parent-of-origin signal, this provides further support for the presence of a maternally expressed locus in this region. Indeed, this region encompasses the *CNTNAP2* gene, a member of the neurexin superfamily, that is significantly associated with autism susceptibility [22,52,53,54], and has shown maternal transmission of risk [22].

Few previous studies have considered parent-or-origin effects in autism. Those that have used previous-generation marker sets and much smaller samples than the results presented here. Two previous studies observed parent-or-origin linkage on chromosome 7, but with different regions and types of parental sharing [19,20]. We did not reach genome-wide significant evidence for maternal or paternal transmission on chromosome 7, although a non-significant maternal linkage is observed in a region overlapping the Lamb *et al* report. The regions identified in our analysis were not covered in previous parent-of-origin analyses, to our knowledge,

with the exception of chromosome 15, where the Lamb *et al* did not see paternal sharing, but examined only a small number of sibling pairs and with few microsatellite markers.

In an attempt to detect loci with possible parent-of-origin effects, we used multiple statistical approaches, rather than relying on a single strategy. Consistent evidence of linkage across multiple methods increases support for a true linkage. However, the appropriate interpretation of inconsistent results across parametric and non-parametric analyses is not entirely clear. These may be due to chance findings in one analysis, or they may be true linkage that only one method was sufficiently powered to detect. For example, the chromosome 1 peak was significant only in the parametric analysis, a method which is more powerful given that the parameters are correctly specified. While it is unrealistic to believe that we could actually have specified the "correct" parameters given the complex nature of autism, those selected may have been sufficiently close. Peaks on chromosomes 6 and 9 were significant in the non-parametric ASPEX analysis; however, the parametric GHI analysis did not find significant peaks on these chromosomes, which may be due to selection of "incorrect" parameters for the models run.

These analyses considered as affected all children with an ASD, as defined by the ADI-R and ADOS in the NIMH sample. However, in AGRE, we included those with autistic disorder, as well as those with "not quite autism" and "broad spectrum" to encompass Asperger's and PDD-NOS. This may have contributed to some heterogeneity or misclassification in our data, but was considered more appropriately inclusive and comparable to the NIMH ASD families than excluding a larger number of AGRE families with an ASD other than autistic disorder.

Our results suggest the usefulness of genome-wide analysis with evaluation of parent-of-origin effects, although future studies are necessary to determine if these results can be replicated. Given the potential role for imprinting and other epigenetic mechanisms in neuropsychiatric disorders such as autism [55], the regions identified are good candidates for assessment of functional variants and their relationship to epigenetic marks such as methylation status on paternal and maternal DNA. These results could provide completely novel insight into the biology and pathogenesis of a common neurodevelopmental disorder.

## Supporting Information

**Figure S1** Parent-of-Origin Linkage Analysis for Microsatellite Markers in 384 AGRE families. A: Parametric results. Panel B: Allele sharing results. Maternal scores are shown in red; paternal scores are in blue.

Found at: doi:10.1371/journal.pone.0012513.s001 (0.68 MB TIF)

## Acknowledgments

We would like to acknowledge the families who participated in the AGRE and NIMH repositories. The NIMH collection Principal Investigators and Co-Investigators were: Neil Risch, Richard M. Myers, Donna Spiker, Linda J. Lotspeich, Joachim F. Hallmayer, Helena C. Kraemer, Roland D. Ciaranello, Luigi Luca Cavalli-Sforza (Stanford University, Stanford); William M. McMahon and P. Brent Petersen (University of Utah, Salt Lake City). The Stanford team is indebted to the parent groups and clinician colleagues who referred families and extends their gratitude to the families with individuals with autism who were partners in this research. The collection data and biomaterials also come from the Autism Genetic Resource Exchange (AGRE) collection. The AGRE collection Principal

Investigator is Daniel H. Geschwind (UCLA). The Co-Principal Investigators include Stanley F. Nelson and Rita M. Cantor (UCLA), Christa Lese Martin (Univ. Chicago), T. Conrad Gilliam (Columbia). Co-Investigators include Maricela Alarcon (UCLA), Kenneth Lange (UCLA), Sarah J. Spence (UCLA), David H. Ledbetter (Emory) and Hank Juo (Columbia). Scientific oversight of the AGRE program is provided by a steering committee (Chair: Daniel H. Geschwind; Members: W. Ted Brown, Maja Bucan, Joseph D. Buxbaum, T. Conrad Gilliam, David Greenberg, David

H. Ledbetter, Bruce Miller, Stanley F. Nelson, Jonathan Pevsner, Carol Sprouse, Gerard D. Schellenberg and Rudolph Tanzi).

## Author Contributions

Conceived and designed the experiments: CN AF MDF. Performed the experiments: AC DEA. Analyzed the data: DF KCP. Contributed reagents/materials/analysis tools: CLA AC MDF. Wrote the paper: DF KCP CLA CN AF MDF.

## References

- Bailey A, Le Couteur A, Gottesman I, Bolton P, Simonoff E, et al. (1995) Autism as a strongly genetic disorder: evidence from a British twin study. *Psychol Med* 25: 63–77.
- Bolton C, Gordon JR (1994) Re-engineering: a prescription for hospitals. *Healthcare Manage Forum* 7: 51–55.
- Jorde LB, Hasstedt SJ, Ritvo ER, Mason-Brothers A, Freeman BJ, et al. (1991) Complex segregation analysis of autism. *Am J Hum Genet* 49: 932–938.
- Ritvo ER, Jorde LB, Mason-Brothers A, Freeman BJ, Pingree C, et al. (1989) The UCLA-University of Utah epidemiologic survey of autism: recurrence risk estimates and genetic counseling. *Am J Psychiatry* 146: 1032–1036.
- Ritvo ER, Spence MA, Freeman BJ, Mason-Brothers A, Mo A, et al. (1985) Evidence for autosomal recessive inheritance in 46 families with multiple incidences of autism. *Am J Psychiatry* 142: 187–192.
- Abrahams BS, Geschwind DH (2008) Advances in autism genetics: on the threshold of a new neurobiology. *Nat Rev Genet* 9: 341–355.
- Feinberg AP, Oshimura M, Barrett JC (2002) Epigenetic mechanisms in human disease. *Cancer Res* 62: 6784–6787.
- Davies W, Isles AR, Wilkinson LS (2005) Imprinted gene expression in the brain. *Neurosci Biobehav Rev* 29: 421–430.
- Arndt TL, Stodgell CJ, Rodier PM (2005) The teratology of autism. *Int J Dev Neurosci* 23: 189–199.
- Bauman ML, Kemper TL (2005) Neuroanatomic observations of the brain in autism: a review and future directions. *Int J Dev Neurosci* 23: 183–187.
- Nicholls RD, Knepper JL (2001) Genome organization, function, and imprinting in Prader-Willi and Angelman syndromes. *Annu Rev Genomics Hum Genet* 2: 153–175.
- Cohen D, Pichard N, Tordjman S, Baumann C, Burglen L, et al. (2005) Specific genetic disorders and autism: clinical contribution towards their identification. *J Autism Dev Disord* 35: 103–116.
- Deschenaux MJ, Vogels A, Govers V, Borghgraef M, Willekens D, et al. (2002) Prader-Willi syndrome: new insights in the behavioural and psychiatric spectrum. *J Intellect Disabil Res* 46: 41–50.
- Steffenburg S, Gillberg CL, Steffenburg U, Kyllerman M (1996) Autism in Angelman syndrome: a population-based study. *Pediatr Neurol* 14: 131–136.
- Trillingsgaard A, JR OS (2004) Autism in Angelman syndrome: an exploration of comorbidity. *Autism* 8: 163–174.
- Veltman MW, Craig EE, Bolton PF (2005) Autism spectrum disorders in Prader-Willi and Angelman syndromes: a systematic review. *Psychiatr Genet* 15: 243–254.
- Cook EH, Jr., Lindgren V, Leventhal BL, Courchesne R, Lincoln A, et al. (1997) Autism or atypical autism in maternally but not paternally derived proximal 15q duplication. *Am J Hum Genet* 60: 928–934.
- Schroer RJ, Phelan MC, Michaelis RC, Crawford EC, Skinner SA, et al. (1998) Autism and maternally derived aberrations of chromosome 15q. *Am J Med Genet* 76: 327–336.
- Ashley-Koch A, Wolpert CM, Menold MM, Zaccaro L, Basu S, et al. (1999) Genetic studies of autistic disorder and chromosome 7. *Genomics* 61: 227–236.
- Lamb JA, Barnby G, Bonora E, Sykes N, Bacchelli E, et al. (2005) Analysis of IMGSAC autism susceptibility loci: evidence for sex limited and parent of origin specific effects. *J Med Genet* 42: 132–137.
- Liu J, Nyholt DR, Magnussen P, Parano E, Pavone P, et al. (2001) A genome-wide screen for autism susceptibility loci. *Am J Hum Genet* 69: 327–340.
- Arking DE, Cutler DJ, Brune CW, Teslovich TM, West K, et al. (2008) A common genetic variant in the neurexin superfamily member CNTNAP2 increases familial risk of autism. *Am J Hum Genet* 82: 160–164.
- Weiss LA, Arking DE, Daly MJ, Chakravarti A (2009) A genome-wide linkage and association scan reveals novel loci for autism. *Nature* 461: 802–808.
- Lord C, Rutter M, Le Couteur A (1994) Autism Diagnostic Interview-Revised: a revised version of a diagnostic interview for caregivers of individuals with possible pervasive developmental disorders. *J Autism Dev Disord* 24: 659–685.
- Geschwind DH, Sowiński J, Lord C, Iversen P, Shestack J, et al. (2001) The autism genetic resource exchange: a resource for the study of autism and related neuropsychiatric conditions. *Am J Hum Genet* 69: 463–466.
- Evans DM, Cardon LR (2004) Guidelines for genotyping in genomewide linkage studies: single-nucleotide-polymorphism maps versus microsatellite maps. *Am J Hum Genet* 75: 687–692.
- Strauch K, Fimmers R, Kurz T, Deichmann KA, Wienker TF, et al. (2000) Parametric and nonparametric multipoint linkage analysis with imprinting and two-locus-trait models: application to mite sensitization. *Am J Hum Genet* 66: 1945–1957.
- Abecasis GR, Wigginton JE (2005) Handling marker-marker linkage disequilibrium: pedigree analysis with clustered markers. *Am J Hum Genet* 77: 754–767.
- Abecasis GR, Cherny SS, Cookson WO, Cardon LR (2002) Merlin—rapid analysis of dense genetic maps using sparse gene flow trees. *Nat Genet* 30: 97–101.
- Wimpory D, Nicholas B, Nash S (2002) Social timing, clock genes and autism: a new hypothesis. *J Intellect Disabil Res* 46: 352–358.
- Kulman G, Lissoni P, Rovelli F, Roselli MG, Brivio F, et al. (2000) Evidence of pineal endocrine hypofunction in autistic children. *Neuro Endocrinol Lett* 21: 31–34.
- Melke J, Goubran Botros H, Chaste P, Betancur C, Nygren G, et al. (2008) Abnormal melatonin synthesis in autism spectrum disorders. *Mol Psychiatry* 13: 90–98.
- Nir I, Meir D, Zilber N, Knobler H, Hadjiz J, et al. (1995) Brief report: circadian melatonin, thyroid-stimulating hormone, prolactin, and cortisol levels in serum of young adults with autism. *J Autism Dev Disord* 25: 641–654.
- Tordjman S, Anderson GM, Pichard N, Charbuy H, Toutou Y (2005) Nocturnal excretion of 6-sulphatoxymelatonin in children and adolescents with autistic disorder. *Biol Psychiatry* 57: 134–138.
- Jin X, von Gall C, Pieschl RL, Gribkoff VK, Stehle JH, et al. (2003) Targeted disruption of the mouse Mel(1b) melatonin receptor. *Mol Cell Biol* 23: 1054–1060.
- Liu C, Weaver DR, Jin X, Shearman LP, Pieschl RL, et al. (1997) Molecular dissection of two distinct actions of melatonin on the suprachiasmatic circadian clock. *Neuron* 19: 91–102.
- Yonan AL, Alarcon M, Cheng R, Magnusson PK, Spence SJ, et al. (2003) A genomewide screen of 345 families for autism-susceptibility loci. *Am J Hum Genet* 73: 886–897.
- Marshall CR, Noor A, Vincent JB, Lionel AC, Feuk L, et al. (2008) Structural variation of chromosomes in autism spectrum disorder. *Am J Hum Genet* 82: 477–488.
- McInnes LA, Ouchanov L, Nakamine A, Jimenez P, Esquivel M, et al. (2007) The NRG1 exon 11 missense variant is not associated with autism in the Central Valley of Costa Rica. *BMC Psychiatry* 7: 21.
- Lippiello PM (2006) Nicotinic cholinergic antagonists: a novel approach for the treatment of autism. *Med Hypotheses* 66: 985–990.
- Michaelis RC, Skinner SA, Deason R, Skinner C, Moore CL, et al. (1997) Interstitial deletion of 20p: new candidate region for Hirschsprung disease and autism? *Am J Med Genet* 71: 298–304.
- Sauter S, von Beust G, Burfeind P, Weise A, Starke H, et al. (2003) Autistic disorder and chromosomal mosaicism 46,XY[123]/46,XY,dcl(20)(pter → p12.2)[10]. *Am J Med Genet A* 120A: 533–536.
- Wassink TH, Losh M, Frantz RS, Vieland VJ, Goedken R, et al. (2005) A case of autism and uniparental disomy of chromosome 1. *Hum Genet* 117: 200–206.
- Bartlett CW, Flax JF, Logue MW, Smith BJ, Vieland VJ, et al. (2004) Examination of potential overlap in autism and language loci on chromosomes 2, 7, and 13 in two independent samples ascertained for specific language impairment. *Hum Hered* 57: 10–20.
- Ma D, Salyakina D, Jaworski JM, Konidari I, Whitehead PL, et al. (2009) A genome-wide association study of autism reveals a common novel risk locus at 5p14.1. *Ann Hum Genet* 73: 263–273.
- Wang K, Zhang H, Ma D, Bucan M, Glessner JT, et al. (2009) Common genetic variants on 5p14.1 associate with autism spectrum disorders. *Nature* 459: 528–533.
- Bakker SC, van der Meulen EM, Buitelaar JK, Sandkuijl LA, Pauls DL, et al. (2003) A whole-genome scan in 164 Dutch sib pairs with attention-deficit/hyperactivity disorder: suggestive evidence for linkage on chromosomes 7p and 15q. *Am J Hum Genet* 72: 1251–1260.
- McCauley JL, Li C, Jiang L, Olson LM, Crockett G, et al. (2005) Genome-wide and Ordered-Subset linkage analyses provide support for autism loci on 17q and 19p with evidence of phenotypic and interlocus genetic correlates. *BMC Med Genet* 6: 1.
- Glessner JT, Wang K, Cai G, Korvatska O, Kim CE, et al. (2009) Autism genome-wide copy number variation reveals ubiquitin and neuronal genes. *Nature* 459: 569–573.
- Kitada T, Asakawa S, Hattori N, Matsumine H, Yamamura Y, et al. (1998) Mutations in the parkin gene cause autosomal recessive juvenile parkinsonism. *Nature* 392: 605–608.



51. Sukumar S, Wang S, Hoang K, Vanchiere CM, England K, et al. (1999) Subtle overlapping deletions in the terminal region of chromosome 6q24.2-q26: three cases studied using FISH. *Am J Med Genet* 87: 17–22.
52. Alarcon M, Abrahams BS, Stone JL, Duvall JA, Perederiy JV, et al. (2008) Linkage, association, and gene-expression analyses identify CNTNAP2 as an autism-susceptibility gene. *Am J Hum Genet* 82: 150–159.
53. Bakkaloglu B, O’Roak BJ, Louvi A, Gupta AR, Abelson JF, et al. (2008) Molecular cytogenetic analysis and resequencing of contactin associated protein-like 2 in autism spectrum disorders. *Am J Hum Genet* 82: 165–173.
54. Strauss KA, Puffenberger EG, Huentelman MJ, Gottlieb S, Dobrin SE, et al. (2006) Recessive symptomatic focal epilepsy and mutant contactin-associated protein-like 2. *N Engl J Med* 354: 1370–1377.
55. Schanen NC (2006) Epigenetics of autism spectrum disorders. *Hum Mol Genet* 15(Spec No 2): R138–150.