



**HAL**  
open science

## Experimental Evolution as a Tool to Investigate Natural Processes and Molecular Functions

Philippe Remigi, Catherine Masson-Boivin, Eduardo P C Rocha

► **To cite this version:**

Philippe Remigi, Catherine Masson-Boivin, Eduardo P C Rocha. Experimental Evolution as a Tool to Investigate Natural Processes and Molecular Functions. Trends in Microbiology, 2019, 27 (7), pp.623-634. 10.1016/j.tim.2019.02.003 . hal-02329724

**HAL Id: hal-02329724**

**<https://hal.science/hal-02329724>**

Submitted on 23 Oct 2019

**HAL** is a multi-disciplinary open access archive for the deposit and dissemination of scientific research documents, whether they are published or not. The documents may come from teaching and research institutions in France or abroad, or from public or private research centers.

L'archive ouverte pluridisciplinaire **HAL**, est destinée au dépôt et à la diffusion de documents scientifiques de niveau recherche, publiés ou non, émanant des établissements d'enseignement et de recherche français ou étrangers, des laboratoires publics ou privés.

1 **Experimental evolution as a tool to investigate natural processes and molecular functions**

2

3 **Philippe Remigi<sup>1\*</sup>, Catherine Masson-Boivin<sup>1</sup> and Eduardo P.C. Rocha<sup>2,3</sup>**

4 1. Laboratoire des Interactions Plantes-Microorganismes (LIPM), Université de Toulouse,  
5 INRA, CNRS, 31326 Castanet-Tolosan, France.

6 2. Microbial Evolutionary Genomics, Institut Pasteur, 25-28 rue Dr. Roux, 75015 Paris, France.

7 3. CNRS, UMR3525, 25-28 rue Dr. Roux, 75015 Paris, France

8 \*Correspondance: [philippe.remigi@inra.fr](mailto:philippe.remigi@inra.fr) (P. Remigi)

9

10

11 **Keywords:** Experimental evolution, gene regulation, antibiotic resistance, host-microbe  
12 interactions.

13

14

15 **Abstract**

16 Experimental evolution of microbes has allowed evolutionary biologists to examine adaptive  
17 processes in real time, generating novel insights into fundamental laws of evolution. Much  
18 less appreciated is the potential of this approach to advance the understanding of microbial  
19 cells and molecular processes in complement of traditional molecular genetics. The tracking  
20 of mutations underlying phenotypic changes offers the opportunity for detailed molecular  
21 analyses of novel phenotypes. This provides a breadth of information on diverse biological  
22 systems and may retrace key past events of natural history. Here, we highlight how the field  
23 has advanced our understanding of gene regulation, antibiotic resistance and host-  
24 microbiome interactions to exemplify how experimental evolution can be employed to  
25 provide new light on microbial systems.

26

## 27 **Highlights**

- 28 - Experimental evolution (EE) can complement traditional molecular genetic studies on  
29 microbial systems.
- 30 - The diversity of EE approaches enabled progresses in many fields of microbiology,  
31 including molecular mechanisms of gene regulation, antibiotic resistance, and host-  
32 microbiome interactions.
- 33 - Under specific conditions, EE can parallel the evolution of natural systems.
- 34 - EE offers exciting perspectives to discover the function of new genes and probe  
35 evolution within communities.

36

37

## 38 **Glossary**

39 **Bow-tie network:** architecture of a signalling network where one (or a few) core central  
40 regulator is controlled by multiple proteins (input signal) and controls multiple targets  
41 (output).

42 **Collateral susceptibility:** resistance to one antibiotic increases sensitivity to another.

43 **Cross-resistance:** resistance to one antibiotic increases resistance to another.

44 **Experimental evolution:** propagation of living organisms in a controlled environment – the  
45 laboratory or the field - for several generations (typically, from tens to thousands) allowing  
46 to witness the action of natural selection and to investigate evolutionary processes

47 **Functional promiscuity:** the ability of a protein to perform a secondary activity, often  
48 mediated by the inability to distinguish between target molecular substrates (metabolite,  
49 DNA, RNA, protein) that have a similar structure.

50 **Fruiting body:** multicellular, aggregative structures formed by myxobacteria during nutrient  
51 starvation and that contain spores resistant to heat, desiccation or freezing.

52 **Mutators:** bacteria with unusually high mutation rates, often as a result of loss of DNA repair  
53 genes or expression of error-prone DNA polymerases.

54 **Noise in gene expression:** stochastic variations in gene expression level over time and  
55 between isogenic cells growing in a homogeneous environment.

56 **Pervasive transcription:** describes the fact that large portions of genomes are transcribed,  
57 including intergenic regions.

58 **sRNA**: small non-coding RNA with regulatory function

59 **Sub-MIC concentrations**: conditions where bacterial growth is not completely stopped by  
60 antibiotics.

61

62 **Outstanding questions:**

63 - Can we exploit mutations found in EE to characterise genes of unknown function?

64 - Can EE enlighten mechanisms slowing down the evolution of resistances?

65 - Can the EE of microbial communities bring new insights into their functional  
66 characteristics?

67 - Can we use within-host EE to identify host factors (and other environmental factors)  
68 shaping bacterial evolutionary trajectories during infection?

69 - Can EE reproduce the emergence of major intracellular symbiotic associations (such  
70 as mitochondria in eukaryotic cells, plastids in the green lineage, association between  
71 fungi and land plants, obligate endosymbionts of insects)?

72

73 **Experimental evolution: beyond evolutionary biology**

74 Artificial breeding of plants and animals played a key role in the maturation of Darwin's theory  
75 of evolution by natural selection, but also in the rise of modern human societies (from  
76 agriculture to recreational breeding of plants and pets). Non-professional evolutionary  
77 biologists performing (sometimes unwittingly) evolution experiments have successfully  
78 improved the yield of many biological processes. In contrast, although some evolutionary  
79 biologists contemporary of Darwin turned to **experimental evolution** (EE; see **Glossary**), the  
80 influence of this approach in the development of evolutionary biology only came to  
81 prominence in the last few decades [1]. Applied to microbes with short generation times in  
82 various conditions (Box 1), EE generated unique biological material (Fig. 1) that was used to  
83 probe the evolutionary dynamics of microbial phenotypes [2, 3], to decipher the genetic bases  
84 of adaptation [4] and to optimize microbial traits for industrial use [5].

85

86 In spite of these successes, many biologists remain unaware or unconvinced of the relevance  
87 of EE approaches to their research programs. Typical criticisms of EE include the artificial  
88 nature of the experimental setups or their simplicity in terms of biotic and abiotic interactions

89 [6]. However, this is also true for many excellent lines of research in molecular biology, which  
90 depend on the construction of simplified and well-controlled setups. In this article, we argue  
91 that experimental evolution has matured into a rich field with a varied set of tools that can  
92 help microbiologists to unravel molecular processes underlying adaptive phenotypes. This is  
93 independent of the relevance of experimental evolution to reproduce natural adaptive  
94 processes, since laboratory phenotypes can be interesting on their own. For example,  
95 improving growth rate, yield and recombinant protein production in the laboratory has  
96 obvious biotechnological interest [7]. Contemporary microbes can also be used to experiment  
97 on the ecological conditions and evolutionary patterns that might have accompanied the  
98 evolution of multicellularity millions of years ago [8]. Here, instead of aiming at providing an  
99 exhaustive overview of the field (for which we refer the interested reader to recent reviews  
100 [2-4, 7-12]), we use a few selected examples on gene regulation, antibiotic resistance and  
101 host-microbiome interactions to illustrate how EE contributes to understand fundamental  
102 aspects of molecular biology and helps manipulating natural ecosystems. As the natural  
103 inclination of most biologists is to understand if the phenotypes observed in laboratory-  
104 evolved mutants are relevant to understand natural processes, we present examples of  
105 discrepancies (Box 2), but also increasing evidence of meaningful parallels (Box 3), between  
106 EE and natural evolutionary processes. While this review focuses on bacteria, concepts  
107 discussed here are also relevant to other organisms, especially viruses or unicellular  
108 eukaryotes.

109

## 110 **Gene regulation**

111

112 A major challenge for modern biology has been to map and understand the logics of gene  
113 regulatory networks (GRNs). Outstanding enigmas in molecular biology tackled by EE include  
114 how the interactions of transcription factors (TF) with DNA arise and evolve, why they are so  
115 hard to identify correctly, and how they form complex networks [13].

116

117 The co-option or modulation of bacterial regulatory responses provide a multitude of  
118 opportunities for adaptation to new environmental challenges. Indeed, most adaptive  
119 mutations in EE are found in regulatory regions or in regulatory genes [4]. Detailed molecular  
120 analyses of the associated transcriptional rewiring can reveal new components from signalling

121 networks, new connections between known regulatory components and new cross-talk  
122 between signalling and metabolic pathways. These trends emerged from some of the very  
123 early studies in experimental evolution [14, 15]. A prominent example includes the evolution  
124 of a new lactose fermentation system in *Escherichia coli*, via mutations in the *egbA*  $\beta$ -  
125 galactosidase and its regulator [16]. More recently, EE has uncovered a novel **sRNA** regulating  
126 *Myxococcus xanthus* **fruiting body** development. *M. xanthus* responds to nutrient starvation  
127 by generating fruiting bodies containing stress-resistant spores. This behaviour was lost during  
128 EE in nutrient-rich liquid medium, but was subsequently re-evolved in alternating cycles of  
129 starvation and non-starvation [17]. The point mutation responsible for the re-evolution of  
130 fruiting-body formation was found in a previously un-annotated intergenic region, leading to  
131 the discovery of the novel sRNA controlling this developmental pathway [18]. Another study  
132 established a link between pyrimidine metabolism and the Gac/Rsm signalling pathway, a  
133 major determinant of lifestyle switch in *Pseudomonas* spp. [19] that controls the production  
134 of extracellular capsules in *Pseudomonas fluorescens*. Evolution of *P. fluorescens* under  
135 fluctuating environments gave rise to a strain that produces a sub-population of capsulated  
136 cells [20]. This phenotype is underpinned by a mutation that decreases pyrimidine  
137 biosynthesis [21] and increases ribosome production [22]. That both increased ribosome  
138 levels and functional Gac/Rsm signalling are required for heterogeneous capsule production  
139 shows that central metabolism (pyrimidine biosynthesis) can alter the output of a two-  
140 component signalling system [22].

141  
142 The plasticity of regulatory regions and transcription factors observed in EE can be recruited  
143 to understand fundamental properties of transcriptional control. Low affinity TF-DNA  
144 interactions appear to play a critical role in the evolution of GRNs. Yona *et al.* [23] replaced  
145 the *lac* promoter with random DNA sequences of the same size in *E. coli* and observed that  
146 bacterial growth in the presence of lactose rapidly led to the evolution of functional  
147 promoters. A single mutation in synthetic promoters was sufficient to induce substantial  
148 expression in most cases (Fig. 2A). The rapid *de novo* evolution of promoters and the  
149 **functional promiscuity** of transcription factors may explain the intriguing **pervasive**  
150 **transcription** observed in bacterial genomes [24]. It may also explain the evolutionary  
151 plasticity of gene expression in bacteria, since an initially weak binding of a TF on a regulatory  
152 region can be reinforced by mutations in the DNA-binding domain. This was observed during

153 the re-evolution of motility in *P. fluorescens* following the deletion of the master regulator of  
154 flagellar synthesis *fleQ* [25]. Under selection for motility, flagellin expression was restored  
155 within 96h in a two-step process involving (i) the increased phosphorylation (and thus,  
156 activation level) of a nitrogen-related transcriptional regulator with weak (promiscuous)  
157 activity on flagellar genes and (ii) a switch-of-function mutation that re-directed  
158 transcriptional activity of this regulator from nitrogen uptake to flagellar genes. The plasticity  
159 of regulatory interactions can also be associated with **noise in gene expression**, which has  
160 attracted interest in the recent years because it can contribute to phenotypic variability in  
161 clonal populations [26]. Wolf *et al.* [27] showed that libraries of random promoters evolved to  
162 produce GFP at high or intermediate expression levels had lower average noise than natural  
163 *E. coli* promoters. This suggests that noise is a selected trait in nature. When the average  
164 production of a protein is not optimal in a given environment, a broad (i.e. noisy) distribution  
165 of gene expression levels increases the likelihood that some cells of the population express an  
166 appropriate amount of this protein. Mathematical modelling suggests that noise can act as a  
167 primitive form of gene regulation and pave the way towards more precise regulation [27].  
168 Altogether, these studies illustrate that what may appear to be ‘non-optimality’ in  
169 transcriptional regulation – functional promiscuity and noise – actually drives the evolution of  
170 GRNs.

171  
172 EE enables to directly probe systems-level properties of GRNs in an evolutionary context.  
173 Witnessing how GRNs are gradually built by evolutionary tinkering (rather than by optimized  
174 design) is key to understand their complex architecture and emergent properties, such as  
175 robustness, resilience or evolvability [28]. In many cases, transcriptional changes induced by  
176 genetic or environmental perturbations are reverted during the early steps of adaptation by  
177 adaptive mutations in global regulators that restore cellular homeostasis [29-32]. These  
178 results support the idea that transcriptional stability is essential for optimal fitness and can be  
179 restored by minimal genetic modifications in global regulators, thus highlighting the resilience  
180 of GRNs. However, the topology of GRNs architecture can also benefit bacterial evolvability.  
181 Studying the evolution of the **bow-tie network** controlling flagellar production in *E. coli*, Ni *et*  
182 *al.* [33] found that motility in a porous environment (the trait under selection in their  
183 experiment) can increase via mutations in multiple target genes. Yet, all adaptive mutations  
184 commonly modified the activity of a core sigma-factor checkpoint controlling flagellar gene

185 expression. By allowing multiple mutations in independent genes to target the same central  
186 regulator of motility, the bow-tie architecture provides evolutionary flexibility for the fine-  
187 tuning of bacterial behaviours. These examples show that EE is a powerful tool to analyse  
188 evolutionary properties of GRNs.

189

190

### 191 **Antibiotic resistance**

192 The emergence of antibiotic resistant bacteria is a remarkable example of human-induced  
193 evolutionary process. Resistant bacteria emerge systematically within a few years of the  
194 introduction of every novel antibiotic. The consequences are dramatic: 700,000 deaths per  
195 year, estimated to increase to over 10 million in the incoming decades ([https://amr-  
196 review.org/Publications](https://amr-review.org/Publications)). EE is particularly well-suited to decipher the mechanisms of  
197 acquisition of antibiotic resistance given the timescale and intensity of selection in this  
198 process. This has produced unexpected novel lines of research. For example, very early studies  
199 on the EE of antibiotic resistance kick-started the study of microbial mutagenesis by  
200 identifying the first *E. coli* **mutators** [34]. The simplicity of tracking resistant bacteria, the  
201 societal relevance of the topic, and its implications to molecular genetics and physiology have  
202 stimulated research on the mechanisms of acquisition of resistance, on multiple resistance,  
203 and on the compensation of the fitness costs of resistance.

204

205 Most resistances studied from clinical isolates are strong, because of the obvious medical  
206 interest of such cases. EE provides complementary information about resistance in controlled  
207 setups where pathways to resistance can be tracked, selection forces tuned, and physiological  
208 states controlled for. Notably, EE revealed the important role of low (below the minimum  
209 inhibitory concentration; MIC) antibiotic concentrations on the evolution of resistance. These  
210 concentrations can be encountered in many types of environments and do not result in cell  
211 death, but provide sufficient pressure for the selection of resistant variants and even the  
212 evolution of novel mechanisms of resistance [35]. They also accelerate the acquisition of  
213 resistance by selecting for mutators [36], and increasing the rates of horizontal gene transfer  
214 [37]. Lindsey *et al.* [38] evolved hundreds of populations of *E. coli* under variable rates of  
215 increase in concentration of rifampicin. By assessing fitness of genetically engineered  
216 combinations of mutations from isolates evolved under low rates of environmental change,



217 they could show that certain genotypes were evolutionarily inaccessible to evolution under  
218 rapid environmental changes. Wistrand-Yuen *et al.* [39] then showed that *Salmonella enterica*  
219 exposed to **sub-MIC levels** of streptomycin evolved high-level resistance via mechanisms  
220 different from those observed under above-MIC conditions. Sub-MIC resistance evolved  
221 through small-effect mutations that combined to confer high-level resistance.

222

223 Antibiotics stimulate a set of core responses in bacterial physiology [40], which contributes to  
224 explain why resistance to one antibiotic can change the cell's susceptibility to others [41].  
225 Several recent studies detailed the network of **cross-resistance** and **collateral susceptibility**  
226 resulting from EE of resistance to each of a large range of antibiotics [42-44]. Evolution  
227 involving cross-resistance and collateral sensitivity is frequently convergent in *E. coli*, meaning  
228 that one can predict to a reasonable extent the antibiotic resistance phenotypes from the  
229 genome sequences of the laboratory-evolved lines [45]. Treatments based on alternating  
230 drugs with compatible collateral sensitivity profiles could thus be more efficient and lead to  
231 slower development of resistances (Fig. 2B; [44]). Several of these studies observed that  
232 populations adapted to resist to aminoglycosides show systematically lower fitness in the  
233 presence of other types of antibiotics. In molecular terms, this could be the consequence of  
234 selection for alterations in the inner membrane potential reducing the uptake of  
235 aminoglycoside-related antibiotics, which would simultaneously lower the activity of efflux  
236 pumps using proton-motive force [42]. Interestingly, the comparison of interaction networks  
237 evolving in conditions of weak and high antibiotic concentration revealed that the strength of  
238 selection shapes the acquisition of resistance: cross-resistance tends to be stronger under  
239 higher antibiotic concentrations [46]. The stochasticity of evolutionary trajectories leading to  
240 resistance to one antibiotic can influence the occurrence of collateral sensitivity [47], calling  
241 for a careful assessment of the robustness of this phenomenon when wanting to exploit it in  
242 a clinical setting. Together with the studies on the effect of sub-MIC conditions, this suggests  
243 that the path towards resistance, involving exposure to high or low antibiotic concentrations,  
244 will shape the network of collateral effects of antibiotics.

245

246 The many evolution experiments detailing the mutational landscape of antibiotic resistance  
247 have systematically revealed rapid partial compensatory evolution of the initial fitness costs  
248 of resistance [48-50]. Compensation facilitates the spread and fixation of antibiotic resistant

249 lineages. For example, rifampicin resistance in *Mycobacterium tuberculosis* is costly in  
250 laboratory-derived mutants, but multidrug-resistant clinical strains often show no fitness  
251 defects [51], because of compensatory mutations [52]. The study of mutants arising in *E. coli*  
252 in the presence of fluoroquinolones showed that compensation of fitness cost associated to  
253 antibiotic resistance can lead to bacteria that are as fit as the wild-type susceptible bacteria in  
254 the absence of antibiotics [53]. Prolonged colonization of chickens with fluoroquinolone-  
255 resistant *Campylobacter jejuni*, a somewhat less controlled evolution experiment, revealed  
256 that resistant bacteria were also fitter pathogens [54]. Genes that simultaneously increase  
257 virulence and resistance may actually be quite common. They were observed in several other  
258 pathogens, including *Pseudomonas aeruginosa*, *Acinetobacter baumannii* and *Vibrio cholerae*  
259 [55]. Even costly resistance mutations can coexist with other genotypes for hundreds of  
260 generations when their high adaptive potential counteracts their initial cost [56]. This means  
261 that a multi-step process of slow accumulation of mutations conferring resistance and cost  
262 compensation, as expected under sub-MIC conditions, can result in bacteria that are both  
263 resistant and fit. This process is strongly dependent on the genetic context of the mutations  
264 (epistasis) [57-60]. For example, a comparison of streptomycin and rifampicin double-resistant  
265 *E. coli* with single-resistant clones obtained through EE showed that low-fitness double-  
266 resistant bacteria compensate their cost faster than single-resistant strains thanks to the  
267 acquisition of compensatory mutations with larger effects [61]. Surprisingly, some mutations  
268 only compensate for double resistance, being neutral or deleterious in single-resistant  
269 backgrounds. This means that multiple resistances may not rapidly go away with pauses in the  
270 use of the corresponding antibiotics.

271

### 272 **Host-microbe interactions**

273 Plants and animals are persistently inhabited by microbes, whose contribution in host health,  
274 nutrition and development is increasingly recognized [62, 63]. Elucidating the functional  
275 mechanisms and evolutionary potential of host-microbiome interactions is crucial to  
276 manipulate this ecosystem and improve host health.

277

278 Most bacterial pathogens have the remarkable ability to alternate between external  
279 environments and specialized host niches. Rapid and coordinated shifts in metabolism,  
280 physiology, and virulence factor production in response to environmental changes are

281 orchestrated by multilayered and highly complex circuitries that are very difficult to decipher  
282 [64]. Adaptation to new hosts, which is generally very rapid in laboratory conditions [65], has  
283 the potential to reveal new components of virulence pathways. This was recently highlighted  
284 in an evolution experiment aiming at adapting the plant pathogen *Ralstonia solanacearum* to  
285 different host plants [66]. Beneficial mutations improving *in planta* colonization mainly  
286 occurred in a gene, which was named *efpR* (for enhanced fitness in plants). The *efpR* gene was  
287 shown to encode a transcriptional regulator acting as both a central player of the  
288 *R. solanacearum* virulence network and a global catabolic repressor down-regulating the  
289 expression of multiple metabolic pathways [67]. Experimental adaptation of *R. solanacearum*  
290 to a non-host legume further identified other components of the *efpR* pathway [68]. Although  
291 the genetic bases of virulence in *R. solanacearum* had been amply dissected [69], this pathway  
292 had not been previously identified, illustrating how EE coupled with genome resequencing  
293 allows identifying novel molecular players of biological functions.

294

295 Many ecological transitions towards pathogenic or mutualistic symbiosis include an initial  
296 acquisition by horizontal gene transfer (HGT) of mobile genetic elements (MGE) that can  
297 provide complex novel traits in a single event of transfer [70, 71]. Profound changes in lifestyle  
298 may require the remodeling of the metabolic and signaling networks in the recipient genome,  
299 a process that may take hundreds to millions of years *in natura* [72]. The study of this process  
300 by the analysis of extant microorganisms can be complemented by EE to pinpoint specific  
301 molecular mechanisms that ensure the full expression of acquired traits. This is illustrated by  
302 the study of nitrogen-fixing legume symbionts (rhizobia), which evolved through the  
303 acquisition of a set of essential symbiotic genes [73]. An experiment was designed to evolve a  
304 plant pathogenic bacterium (*R. solanacearum*) into a legume symbiont under plant (*Mimosa*)  
305 selection pressure. (Fig. 2C). This experiment showed that control mechanisms developed by  
306 the host progressively shape bacteria via the multistep selection of compatible bacterial traits  
307 [74]. The gradual activation and improvement of the first symbiotic properties, *i.e.* the  
308 induction of root nodules where bacteria fix nitrogen and the infection of these nodules,  
309 occurred via the inactivation of the *R. solanacearum* pathogenic type III secretion system and  
310 via regulatory rewiring [75-77], demonstrating the requirement of post-HGT modifications to  
311 achieve symbiosis in the case of horizontal transfer between distantly related bacteria. Upon  
312 experimentally replaying rhizobia evolution, a genetic mechanism was discovered to

313 accelerate symbiotic evolution [78]. Evolved *R. solanacearum* underwent a transient  
314 hypermutagenesis stage that occurred at every inoculation cycle before the cells entered the  
315 plant. Investigating the role of *imuABC* error-prone DNA polymerases present on the  
316 transferred symbiotic plasmid provided evidence that this mutagenesis cassette is expressed  
317 in stress conditions (outside the host plant), thus increasing genetic diversity and offering  
318 more phenotypic diversity to plant selection. *imuABC* cassettes were found on *c.a.* 50% of the  
319 symbiotic plasmids supporting the hypothesis that this hypermutagenesis mechanism has  
320 facilitated the evolution of new rhizobia *in natura*. After 400 generations, mutualistic nitrogen  
321 fixation was not achieved, possibly because time was too short. Yet another evolution  
322 experiment performed with the natural symbiont of *Mimosa* (*Cupriavidus taiwanensis*)  
323 showed that, thanks to host sanctions occurring at the post-infection level, rare nitrogen-fixing  
324 symbionts (that may arise via mutation during evolution) progressively invade a population  
325 dominated by non-fixing bacteria, with a probability that depends on ecological factors [79].  
326 This provided a better understanding of the spread of the mutualistic trait during natural  
327 evolution [73].

328  
329 Plant and animal microbiomes are composed of complex and dynamic bacterial consortia  
330 whose interspecific interactions have implications for the host [80]. The importance of  
331 bacterial antagonism for the evolution of infection was demonstrated in a tri-partite  
332 interaction between *Caenorhabditis elegans* and two bacterial pathogens. In a first EE, King *et*  
333 *al.* [81] showed that mildly pathogenic bacteria (*Enterococcus faecalis*) living in worms rapidly  
334 evolved increased competitiveness against a more virulent pathogen (*Staphylococcus aureus*).  
335 This reduced the mortality caused by *S. aureus* infections. The mechanistic basis for protection  
336 was an increased production by *E. faecalis* of antimicrobial reactive oxygen species directly  
337 affecting pathogen growth. Although this broad-spectrum defense mechanism was not novel,  
338 it showed that microbes living within a host can become mutualists in response to infection  
339 by other pathogens. A subsequent EE showed that microbe-microbe interactions within hosts  
340 can drive the evolution of pathogens. To limit *E. faecalis* colonization, which exploits the costly  
341 siderophores of *S. aureus*, the latter evolved to produce less siderophores [82]. Since  
342 siderophore production contributes to virulence by improving pathogen growth in iron-  
343 limited hosts, its diminution leads to less virulent clones. Hence, bacterial antagonistic

344 interactions can modulate the production of virulence factors, and consequently influence  
345 how the microbiome impacts the host.

346

### 347 **Concluding remarks and future perspectives**

348 EE has already provided a wealth of information on the molecular events (see [83] for  
349 additional examples) and the conditions driving phenotypic adaptation in a number of model  
350 biological systems. We expect that many more discoveries will follow. For practical purposes,  
351 characterisation of adaptive mutations has usually focused on known genes and pathways. A  
352 large number of adaptive mutations found in genes of unknown function remains to be  
353 analysed, representing a challenging untapped reservoir of new discoveries. The development  
354 of cross-experiments databases (such as the recent ALEdb [84]) may help identifying  
355 promising candidate genes to initiate such studies. Moreover, the introduction of novel non-  
356 model bacteria allows EE to tackle different biological questions, *e.g.* studying the evolution  
357 and functioning of microbial communities (see Outstanding Questions). EE can also provide  
358 an alternative to genetic screens for organisms that are not genetically amenable.

359 EE can be used to study mechanisms of evolution, and their underlying molecular biology,  
360 independently of the events that actually took place in the natural history of the species. Yet,  
361 it would be of remarkable interest to use EE as a tool to test hypothesis about evolution in  
362 nature, especially in cases where the study of natural populations only provides limited  
363 insights into ancient processes. EE is not necessarily relevant in this context because of its  
364 simplified setups, and numerous reports revealed differences between EE and natural  
365 processes (Box 2). Nevertheless, there is a growing number of reported parallels between  
366 natural and EE, especially in studies where the latter tried to match more closely the  
367 conditions of natural evolution (Box 3). The extent to which EE studies can mirror the natural  
368 evolution of bacterial traits is likely to be a fertile area for future research.

369 On the technological side, recent genome editing technologies, including CRISPR-Cas or ‘deep  
370 mutational scanning’, tremendously accelerate the exploration of genotype-phenotype  
371 landscapes [10]. Moreover, new cultivation procedures (particularly those based on  
372 micro/millifluidics [85, 86]) will allow large scale, automated evolution experiments, and their  
373 genetic analysis can be facilitated by DNA barcoding [10]. With continuously decreasing  
374 sequencing cost, the EE field is therefore ripe for appropriation by molecular microbiologists  
375 coming with imaginative selective regimes, original microbial strains or communities, and

376 novel biological questions. More generally, the adoption of EE by a wider community of  
377 microbiologists could accelerate the march towards the much-needed synthesis of molecular  
378 and evolutionary approaches [87-89].

379

380

### 381 **Box 1: The many faces of experimental evolution**

382 Experimental evolution can be performed under a wide range of experimental settings  
383 adapted to the biological question of interest. Details on the design of these studies were  
384 reviewed elsewhere [3, 90]. As an attempt to classify the most common EE practices, one can  
385 distinguish levels of complexity along two criteria: environmental conditions and starting  
386 biological material (Fig. 1).

387 Starting biological material: Wild-type bacterial strains are commonly used to start evolution  
388 experiments. Although in theory any cultivable strain can be used, most works focus on fast-  
389 growing genetically tractable model bacteria. Other studies employ modify-and-evolve  
390 approaches where genetic engineering is used to delete [32], introduce a trait [23, 27, 75] or  
391 modify a gene or the whole genome [91, 92], and is followed by EE to understand how the  
392 system evolves. These approaches profit enormously from the recent developments in  
393 synthetic biology and CRISPR-based technologies. Comparative evolution studies are typically  
394 performed by evolving several independent lines from the same ancestor in parallel, but can  
395 also involve different strains/species exposed to the same conditions [93]. Complexity in  
396 starting material can be increased by putting together different bacterial species [94, 95], or  
397 complex communities [96]. In these cases, experimentalists can follow either the evolution of  
398 one of the organisms or the co-evolution of multiple organisms.

399 Environmental complexity: Following the trends set by the long-term evolution experiment  
400 (LTEE), most microbial evolution experiments are performed in very simple growth conditions,  
401 e.g. in shaken Erlenmeyer flasks [97] or in chemostats [98], with a variety of volumes, time  
402 delay and volume of transfer between subsequent cycles (flasks) or dilution rates  
403 (chemostats). A number of studies used more complex environments. Spatially structured  
404 environments are generated in static liquid cultures (creating an oxygen gradient [99]), on  
405 solid supports within liquid medium [100] or on solid surfaces (agar plates [25]). In this case,  
406 micro-organisms deplete resources locally, leading to differences between patches. Growth  
407 on solid media or in liquid meta-populations also helps manipulating genetic assortment

408 between neighbouring cells, a condition often used to explore the evolution of social  
409 behaviours [101-103]. The strength of selective pressures can be adjusted during the  
410 experiment by varying antibiotic concentrations in a continuous culture [58], creating  
411 chemical gradients in agar plates [104], or by varying conditions between successive growth  
412 cycles [20, 43]. Finally, some studies mimic natural conditions more closely by employing more  
413 complex settings, such as eukaryotic hosts, to study the evolution of mutualists or pathogens  
414 [66, 77, 81, 105-107].

415

#### 416 **Box 2: Divergences between EE and natural evolution.**

417 Many EE studies identified patterns of molecular evolution with large excesses of non-  
418 synonymous adaptive mutations, whereas natural populations systematically show a  
419 predominance of synonymous substitutions caused by purifying selection on protein  
420 sequences [108]. This may result from the joint effects of the simple continuous unidirectional  
421 selective pressures applied in many EE together with the use of conditions free from most  
422 other constraints that bacteria endure in natural environments. The same reasons may explain  
423 why core genes tend to accumulate few substitutions in natural populations, but evolve faster  
424 in the LTEE [109]. The contrast between evolutionary patterns is particularly striking for the  
425 RNA polymerase gene *rpoB* that often accumulates adaptive mutations in *in vitro* EE  
426 experiments but is extremely conserved in natural evolution [4]. Interestingly, a recent *E. coli*  
427 EE study in the mouse gut, a more natural environment, showed lower rates of evolution and  
428 no mutations in *rpoB* [110]. Similar discrepancies were found by a study where *P. aeruginosa*  
429 adaptation to the airways of cystic fibrosis patients during over 200,000 generations resulted  
430 in limited genetic diversification. In contrast with *in vitro* EE, the *in vivo* process revealed an  
431 initial period of adaptive mutations followed by a period with the more usual pattern of  
432 dominance of purifying selection [111]. Another reason for the excess of non-synonymous  
433 adaptive mutations in EE is the lack of sexual exchanges with distant strains or species in most  
434 EE setups. This prevents the income of adaptive changes by horizontal gene transfer and  
435 results in adaptive mutations touching key processes that are highly conserved in nature. For  
436 example, many traits are lost in EE because they are costly in simplified setups, but they are  
437 under selection – and thus conserved – in nature [112]. A striking example of this contrast is  
438 given by the frequent evolution of mutators during phage-bacteria co-evolution in simple

439 experiments, which was not observed in complex environments closer to natural conditions  
440 [113, 114].

441

442 **Box 3: Parallels between EE and natural evolution.**

443 The use of more complex setups in EE has found interesting parallels with analogous processes  
444 in natural history. For example, diversification of *M. xanthus* during EE led to genetic diversity  
445 close to those identified in natural populations sampled from small parcels in the soil [115].  
446 EE of *Burkholderia cenocepacia* in biofilms revealed a wealth of mutations associated with its  
447 adaptation and diversification of which four broad classes were also found in clinical isolates  
448 of *Burkholderia dolosa* and *P. aeruginosa* cystic fibrosis patients, suggesting a parallelism  
449 between adaptation to the biofilm lifestyle and lung colonization [100]. A recent study aimed  
450 at comparing directly the patterns of evolution of resistance to colistin in *P. aeruginosa* using  
451 both laboratory EE and the analysis of four clinical isolates from a single cystic fibrosis patient  
452 (sampled within a period of three months) [60]. This revealed a complex, multistep adaptation  
453 process requiring epistatic mutations in several loci where parallels between the natural and  
454 experimental processes could be identified: all resistant mutants were mutators and the  
455 evolution of resistance occurred through mutations in *prmA*, part of the PrmA two-  
456 component system. This shows that processes at comparable time scales requiring a relatively  
457 straightforward adaptation process can reveal significant parallels. Another study combining  
458 detailed phenotypic characterization and mathematical modelling showed that high  
459 mutational supply, influenced by population and bottleneck sizes, was a key parameter  
460 favoring parallelism between laboratory and natural evolution of ciprofloxacin resistance in *E.*  
461 *coli* [116].

462 More complex adaptation processes were investigated by evolving three clones of  
463 *Lactococcus lactis* from a plant isolate to the dairy niche [117]. Gene expression differences  
464 between the parental and the dairy strain were maximal at an operon encoding an ABC  
465 transporter that was 350 times more expressed in the dairy strain. Interestingly this operon  
466 was also expressed at higher level in two of the three adapted strains. An even more radical  
467 EE, leading to a change in lifestyle from a plant pathogen to a rhizobial mutualist upon  
468 acquisition of a large plasmid carrying the symbiosis genes and after a few hundreds of  
469 generations (see Main Text), also showed striking parallels to the natural process that took



470 place over more than 10 million years [118]. In spite of the radically different time-span of the  
471 evolutionary processes and degree of achievement of the symbioses, adaptation was  
472 accompanied in both cases by an overall pattern of purifying selection. Both natural and  
473 experimental processes showed very little signal of adaptation in the fast-evolving symbiotic  
474 plasmid, whereas many adaptive mutations took place in the genetic background of the  
475 bacteria, including mutations that led to the co-option of the same quorum-sensing system in  
476 both processes. These works show that EE reveals significant parallels to natural history when  
477 it mimics key conditions of the natural processes.

478

479

480 **Figure legends:**

481

482 **Fig. 1: Experimental evolution: a source of biological material available for phenotypic and**  
483 **genotypic analysis.**

484 Traditionally, only extant or very recent populations resulting from millions of years of natural  
485 evolution are available for analysis. EE allows the analysis of all steps of adaptation during  
486 years of accelerated evolution in controlled conditions, thanks to frozen fossil records.  
487 Recently, the intensive genomic sampling of variants in natural populations provides data that  
488 can be compared with that of EE. Points represent available naturally- or experimentally-  
489 evolved bacterial clones/populations.

490

491 **Fig. 2. Selected evolution experiments having contributed to advances in gene regulation**  
492 **(A), antibiotic resistance (B) and host-microbe interactions (C).**

493 A. Evolution of promoters [23]. Left: The *lac* promoter was replaced by random sequences in  
494 *E. coli*. Bacteria were evolved by serial dilutions in 0.05% glycerol (utilized by the strain) and  
495 0.2% lactose (originally not utilized). Right: Following laboratory selection, ~60% of promoters  
496 having acquired a single mutation (black star) exhibit on average 50% of the wild-type (WT)  
497 activity.

498 B. Evolution of collateral sensitivity and its use to design new therapeutic strategies [44]. Left:  
499 Bacteria selected to resist a given antibiotic (X) reproducibly display an increased (cross-  
500 resistance), unchanged or decreased (collateral sensitivity) resistance to other antibiotics  
501 (e.g., A) compared to their WT ancestor. Right: Patterns of collateral sensitivity can be  
502 exploited by cycling antibiotic treatments that accelerate eradication of bacterial pathogens.  
503 CFU: colony forming units.

504 C. Evolution of new legume symbionts [77, 78]. The symbiosis plasmid of *Cupriavidus*  
505 *taiwanensis* was introduced into *Ralstonia solanacearum*, generating a non-nodulating proto-  
506 rhizobium (Nod<sup>-</sup>) that was further evolved using serial cycles of co-culture with *Mimosa*  
507 *pudica*, the natural host of *C. taiwanensis*. The symbiosis plasmid possesses the essential *nod*  
508 and *nif/fix* genes required for nodulation and nitrogen fixation. In addition, it contains *imuABC*  
509 genes encoding stress-responsive error-prone DNA polymerases that transiently elevated the  
510 mutation rate of bacteria growing in the rhizosphere. In only 16 cycles (c.a. 400 generations)  
511 the ancestral proto-rhizobium, which was only able to induce root hair curling (Hac<sup>+</sup>) allowing  
512 the formation of infection sites, successively acquired the capacity to enter the root and form  
513 nodules (Nod<sup>+</sup>), extracellularly infect nodules (E-Inf<sup>+</sup>), intracellularly invade nodules (I-Inf<sup>+</sup>) and  
514 massively invade nodule cells (I-Inf<sup>++</sup>), via genome remodeling. Stars symbolize mutations.  
515 Bacteria are represented in blue in nodules. Adapted from references [74, 78].

516

### 517 **Fig. 1 for Box 1: Experimental settings in EE**

518 Examples of experiments using biological material or environments exhibiting increasing  
519 levels of complexity.

520

### 521 **Acknowledgements**

522 We apologize to colleagues whose work could not be cited here due to space limitations. PR  
523 has received the support of the EU in the framework of the Marie-Curie FP7 COFUND People  
524 Programme, through the award of an AgreenSkills+ fellowship under grant agreement n°FP7-  
525 609398. CMB, EPCR, and PR were supported by funds from the French National Research  
526 Agency (ANR-16-CE20-0011-01). CMB and PR were supported by the French Laboratory of

527 Excellence project 'TULIP' (ANR-10-LABX-41). EPCR thanks lab members for discussions on this  
528 topic, notably Olaya Rendueles, Antoine Frenoy, Camille Clerissi, and Jorge Moura de Sousa.

529

530

531 **References:**

- 532 1. Adams, J. and Rosenzweig, F. (2014) Experimental microbial evolution: History and conceptual  
533 underpinnings. *Genomics* 104 (6), 393-398.
- 534 2. Lenski, R.E. (2017) Experimental evolution and the dynamics of adaptation and genome evolution in  
535 microbial populations. *ISME J.* 11 (10), 2181-2194.
- 536 3. Van den Bergh, B. et al. (2018) Experimental design, population dynamics, and diversity in microbial  
537 experimental evolution. *Microbiol. Mol. Biol. Rev.* 82 (3), e00008-18.
- 538 4. Long, A. et al. (2015) Elucidating the molecular architecture of adaptation via evolve and resequence  
539 experiments. *Nat. Rev. Genet.* 16 (10), 567-582.
- 540 5. Chen, K.Q. and Arnold, F.H. (1993) Tuning the activity of an enzyme for unusual environments:  
541 Sequential random mutagenesis of subtilisin E for catalysis in dimethylformamide. *Proc. Natl. Acad.*  
542 *Sci. U.S.A.* 90 (12), 5618-5622.
- 543 6. Buckling, A. et al. (2009) The Beagle in a bottle. *Nature* 457 (7231), 824-829.
- 544 7. Dragosits, M. and Mattanovich, D. (2013) Adaptive laboratory evolution - principles and applications  
545 for biotechnology. *Microb. Cell Fact.* 12, 64.
- 546 8. Rainey, P.B. et al. (2017) Darwin was right: Where now for experimental evolution? *Curr. Opin.*  
547 *Genet. Dev.* 47, 102-109.
- 548 9. Martin, M. et al. (2016) Laboratory evolution of microbial interactions in bacterial biofilms. *J.*  
549 *Bacteriol.* 198 (19), 2564-2571.
- 550 10. Bruger, E.L. and Marx, C.J. (2018) A decade of genome sequencing has revolutionized studies of  
551 experimental evolution. *Curr. Opin. Microbiol.* 45, 149-155.
- 552 11. Hoang, K.L. et al. (2016) Experimental evolution as an underutilized tool for studying beneficial  
553 animal-microbe interactions. *Front. Microbiol.* 7, 1444.
- 554 12. Blount, Z.D. et al. (2018) Contingency and determinism in evolution: Replaying life's tape. *Science*  
555 362 (6415), eaam5979.
- 556 13. Inukai, S. et al. (2017) Transcription factor-DNA binding: Beyond binding site motifs. *Curr. Opin.*  
557 *Genet. Dev.* 43, 110-119.
- 558 14. Mortlock, R.P. (1982) Metabolic acquisitions through laboratory selection. *Annu. Rev. Microbiol.*  
559 36, 259-284.
- 560 15. Clarke, P.H. and Drew, R. (1988) An experiment in enzyme evolution. Studies with *Pseudomonas*  
561 *aeruginosa* amidase. *Bioscience Rep.* 8 (2), 103-120.
- 562 16. Hall, B.G. and Clarke, N.D. (1977) Regulation of newly evolved enzymes. III Evolution of *ebg*  
563 repressor during selection for enhanced lactase activity. *Genetics* 85 (2), 193-201.
- 564 17. Fiegna, F. et al. (2006) Evolution of an obligate social cheater to a superior cooperator. *Nature* 441  
565 (7091), 310-314.
- 566 18. Yu, Y.T.N. et al. (2010) Adaptive evolution of an sRNA that controls *Myxococcus* development.  
567 *Science* 328 (5981), 993-993.
- 568 19. Lapouge, K. et al. (2008) Gac/Rsm signal transduction pathway of gamma-proteobacteria: from  
569 RNA recognition to regulation of social behaviour. *Mol. Microbiol.* 67 (2), 241-253.
- 570 20. Beaumont, H.J.E. et al. (2009) Experimental evolution of bet hedging. *Nature* 462 (7269), 90-93.
- 571 21. Gallie, J. et al. (2015) Bistability in a metabolic network underpins the de novo evolution of colony  
572 switching in *Pseudomonas fluorescens*. *PLoS Biol.* 13 (3), e1002109.
- 573 22. Remigi, P. et al. (2018) Ribosome provisioning activates a bistable switch coupled to fast exit from  
574 stationary phase. bioRxiv. doi.org/10.1101/244129
- 575 23. Yona, A.H. et al. (2018) Random sequences rapidly evolve into de novo promoters. *Nat. Commun.*  
576 9, 1530.

- 577 24. Wade, J.T. and Grainger, D.C. (2014) Pervasive transcription: Illuminating the dark matter of  
578 bacterial transcriptomes. *Nat. Rev. Microbiol.* 12 (9), 647-653.
- 579 25. Taylor, T.B. et al. (2015) Evolutionary resurrection of flagellar motility via rewiring of the nitrogen  
580 regulation system. *Science* 347 (6225), 1014-1017.
- 581 26. Raser, J.M. and O'Shea, E.K. (2005) Noise in gene expression: Origins, consequences, and control.  
582 *Science* 309 (5743), 2010-2013.
- 583 27. Wolf, L. et al. (2015) Expression noise facilitates the evolution of gene regulation. *eLife* 4, e05856.
- 584 28. Sorrells, T.R. and Johnson, A.D. (2015) Making sense of transcription networks. *Cell* 161 (4), 714-  
585 723.
- 586 29. Stoebel, D.M. et al. (2009) Compensatory evolution of gene regulation in response to stress by  
587 *Escherichia coli* lacking RpoS. *PLoS Genet.* 5 (10), e1000671.
- 588 30. Carroll, S.M. and Marx, C.J. (2013) Evolution after introduction of a novel metabolic pathway  
589 consistently leads to restoration of wild-type physiology. *PLoS Genet.* 9 (4), e1003427.
- 590 31. Rodriguez-Verdugo, A. et al. (2016) First-step mutations during adaptation restore the expression  
591 of hundreds of genes. *Mol. Biol. Evol.* 33 (1), 25-39.
- 592 32. McCloskey, D. et al. (2018) Evolution of gene knockout strains of *E. coli* reveal regulatory  
593 architectures governed by metabolism. *Nat. Commun.* 9, 3796.
- 594 33. Ni, B. et al. (2017) Evolutionary remodeling of bacterial motility checkpoint control. *Cell Rep.* 18 (4),  
595 866-877.
- 596 34. Treffers, H.P. et al. (1954) A factor (or mutator gene) influencing mutation rates in *Escherichia coli*.  
597 *Proc. Natl. Acad. Sci. U.S.A.* 40 (11), 1064-1071.
- 598 35. Gullberg, E. et al. (2011) Selection of resistant bacteria at very low antibiotic concentrations. *PLoS*  
599 *Pathog.* 7 (7), e1002158.
- 600 36. Gutierrez, A. et al. (2013)  $\beta$ -lactam antibiotics promote bacterial mutagenesis via an RpoS-  
601 mediated reduction in replication fidelity. *Nat. Commun.* 4, 1610.
- 602 37. Lopez, E. and Blazquez, J. (2009) Effect of subinhibitory concentrations of antibiotics on  
603 intrachromosomal homologous recombination in *Escherichia coli*. *Antimicrob. Agents Chemother.* 53  
604 (8), 3411-3415.
- 605 38. Lindsey, H.A. et al. (2013) Evolutionary rescue from extinction is contingent on a lower rate of  
606 environmental change. *Nature* 494 (7438), 463-467.
- 607 39. Wistrand-Yuen, E. et al. (2018) Evolution of high-level resistance during low-level antibiotic  
608 exposure. *Nat. Commun.* 9, 1599.
- 609 40. Mathieu, A. et al. (2016) Discovery and function of a general core hormetic stress response in *E.*  
610 *coli* Induced by sublethal concentrations of antibiotics. *Cell Rep.* 17 (1), 46-57.
- 611 41. Girgis, H.S. et al. (2009) Genetic architecture of intrinsic antibiotic susceptibility. *PLoS One* 4 (5),  
612 e5629.
- 613 42. Lazar, V. et al. (2013) Bacterial evolution of antibiotic hypersensitivity. *Mol. Syst. Biol.* 9, 700.
- 614 43. Kim, S. et al. (2014) Alternating antibiotic treatments constrain evolutionary paths to multidrug  
615 resistance. *Proc. Natl. Acad. Sci. U.S.A.* 111 (40), 14494-14499.
- 616 44. Imamovic, L. and Sommer, M.O.A. (2013) Use of collateral sensitivity networks to design drug  
617 cycling protocols that avoid resistance development. *Sci. Transl. Med.* 5, 204ra132.
- 618 45. Lazar, V. et al. (2014) Genome-wide analysis captures the determinants of the antibiotic cross-  
619 resistance interaction network. *Nat. Commun.* 5, 4352.
- 620 46. Oz, T. et al. (2014) Strength of selection pressure is an important parameter contributing to the  
621 complexity of antibiotic resistance evolution. *Mol. Biol. Evol.* 31 (9), 2387-2401.
- 622 47. Nichol, D. et al. (2019) Antibiotic collateral sensitivity is contingent on the repeatability of  
623 evolution. *Nat. Commun.* 10 (1), 334.
- 624 48. Reynolds, M.G. (2000) Compensatory evolution in rifampin-resistant *Escherichia coli*. *Genetics* 156  
625 (4), 1471-1481.
- 626 49. Nguyen, T.N.M. et al. (1989) Effects of carriage and expression of the Tn10 tetracycline-resistance  
627 operon on the fitness of *Escherichia coli* K12. *Mol. Biol. Evol.* 6 (3), 213-225.

- 628 50. Brandis, G. et al. (2012) Fitness-compensatory mutations in rifampicin-resistant RNA polymerase.  
629 *Mol. Microbiol.* 85 (1), 142-151.
- 630 51. Gagneux, S. et al. (2006) The competitive cost of antibiotic resistance in *Mycobacterium*  
631 *tuberculosis*. *Science* 312 (5782), 1944-1946.
- 632 52. Comas, I. et al. (2012) Whole-genome sequencing of rifampicin-resistant *Mycobacterium*  
633 *tuberculosis* strains identifies compensatory mutations in RNA polymerase genes. *Nat. Genet.* 44 (1),  
634 106-110.
- 635 53. Marcusson, L.L. et al. (2009) Interplay in the selection of fluoroquinolone resistance and bacterial  
636 fitness. *PLoS Pathog.* 5 (8), e1000541.
- 637 54. Luo, N.D. et al. (2005) Enhanced in vivo fitness of fluoroquinolone-resistant *Campylobacter jejuni*  
638 in the absence of antibiotic selection pressure. *Proc. Natl. Acad. Sci. U.S.A.* 102 (3), 541-546.
- 639 55. Roux, D. et al. (2015) Fitness cost of antibiotic susceptibility during bacterial infection. *Sci. Transl.*  
640 *Med.* 7, 297ra114.
- 641 56. de Sousa, J.M. et al. (2015) Potential for adaptation overrides cost of resistance. *Future Microbiol.*  
642 10 (9), 1415-1431.
- 643 57. Weinreich, D.M. et al. (2006) Darwinian evolution can follow only very few mutational paths to  
644 fitter proteins. *Science* 312 (5770), 111-114.
- 645 58. Toprak, E. et al. (2011) Evolutionary paths to antibiotic resistance under dynamically sustained drug  
646 selection. *Nat. Genet.* 44, 101-105.
- 647 59. Trindade, S. et al. (2009) Positive epistasis drives the acquisition of multidrug resistance. *PLoS*  
648 *Genet.* 5 (7), e1000578.
- 649 60. Jochumsen, N. et al. (2016) The evolution of antimicrobial peptide resistance in *Pseudomonas*  
650 *aeruginosa* is shaped by strong epistatic interactions. *Nat. Commun.* 7, 13002.
- 651 61. de Sousa, J.M. et al. (2017) Multidrug-resistant bacteria compensate for the epistasis between  
652 resistances. *PLoS Biol.* 15 (4), e2001741.
- 653 62. Bai, Y. et al. (2015) Functional overlap of the *Arabidopsis* leaf and root microbiota. *Nature* 528, 364-  
654 369.
- 655 63. Huttenhower, C. et al. (2012) Structure, function and diversity of the healthy human microbiome.  
656 *Nature* 486 (7402), 207-214.
- 657 64. McAdams, H.H. et al. (2004) The evolution of genetic regulatory systems in bacteria. *Nat. Rev.*  
658 *Genet.* 5 (3), 169-178.
- 659 65. Ebert, D. (1998) Experimental evolution of parasites. *Science* 282 (5393), 1432-1435.
- 660 66. Guidot, A. et al. (2014) Multihost experimental evolution of the pathogen *Ralstonia solanacearum*  
661 unveils genes involved in adaptation to plants. *Mol. Biol. Evol.* 31 (11), 2913-2928.
- 662 67. Perrier, A. et al. (2016) Enhanced in planta fitness through adaptive mutations in EfpR, a dual  
663 regulator of virulence and metabolic functions in the plant pathogen *Ralstonia solanacearum*. *PLoS*  
664 *Pathog.* 12 (12), e1006044.
- 665 68. Capela, D. et al. (2017) Recruitment of a lineage-specific virulence regulatory pathway promotes  
666 intracellular infection by a plant pathogen experimentally evolved into a legume symbiont. *Mol. Biol.*  
667 *Evol.* 34 (10), 2503-2521.
- 668 69. Genin, S. and Denny, T.P. (2012) Pathogenomics of the *Ralstonia solanacearum* species complex.  
669 *Annu. Rev. Phytopathol.* 50, 67-89.
- 670 70. Dobrindt, U. et al. (2004) Genomic islands in pathogenic and environmental microorganisms. *Nat.*  
671 *Rev. Microbiol.* 2 (5), 414-424.
- 672 71. Ochman, H. and Moran, N.A. (2001) Genes lost and genes found: Evolution of bacterial  
673 pathogenesis and symbiosis. *Science* 292 (5519), 1096-1098.
- 674 72. Lercher, M.J. and Pál, C. (2008) Integration of horizontally transferred genes into regulatory  
675 interaction networks takes many million years. *Mol. Biol. Evol.* 25 (3), 559-67.
- 676 73. Remigi, P. et al. (2016) Symbiosis within symbiosis: Evolving nitrogen-fixing legume symbionts.  
677 *Trends Microbiol.* 24 (1), 63-75.
- 678 74. Masson-Boivin, C. and Sachs, J.L. (2018) Symbiotic nitrogen fixation by rhizobia-the roots of a  
679 success story. *Curr. Opin. Plant Biol.* 44, 7-15.

680 75. Marchetti, M. et al. (2010) Experimental evolution of a plant pathogen into a legume symbiont.  
681 *PLoS Biol.* 8 (1), e1000280.

682 76. Guan, S.H. et al. (2013) Experimental evolution of nodule intracellular infection in legume  
683 symbionts. *ISME J.* 7 (7), 1367-1377.

684 77. Marchetti, M. et al. (2014) Shaping bacterial symbiosis with legumes by experimental evolution.  
685 *Mol. Plant Microbe Interact.* 27 (9), 956-964.

686 78. Remigi, P. et al. (2014) Transient hypermutagenesis accelerates the evolution of legume  
687 endosymbionts following horizontal gene transfer. *PLoS Biol.* 12 (9), e1001942.

688 79. Daubech, B. et al. (2017) Spatio-temporal control of mutualism in legumes helps spread symbiotic  
689 nitrogen fixation. *eLife* 6, e28683.

690 80. Garcia-Bayona, L. and Comstock, L.E. (2018) Bacterial antagonism in host-associated microbial  
691 communities. *Science* 361 (6408), eaat2456.

692 81. King, K.C. et al. (2016) Rapid evolution of microbe-mediated protection against pathogens in a  
693 worm host. *ISME J.* 10 (8), 1915-1924.

694 82. Ford, S.A. et al. (2016) Microbe-mediated host defence drives the evolution of reduced pathogen  
695 virulence. *Nat. Commun.* 7, 13430.

696 83. Yi, X. (2017) Experimental evolution and proximate mechanisms in biology. *Synth. Syst. Biotechnol.*  
697 2 (4), 253-258.

698 84. Phaneuf, P.V. et al. (2019) ALEdb 1.0: a database of mutations from adaptive laboratory evolution  
699 experimentation. *Nucleic Acids Res.* 47(D1), D1164-D1171.

700 85. Rotem, A. et al. (2018) Evolution on the biophysical fitness landscape of an RNA virus. *Mol. Biol.*  
701 *Evol.* 35 (10), 2390-2400.

702 86. Cottinet, D. et al. (2016) Lineage tracking for probing heritable phenotypes at single-cell resolution.  
703 *PLoS One* 11 (4), e0152395.

704 87. Upson, J.L. et al. (2018) The coming of age of EvoMPMI: evolutionary molecular plant-microbe  
705 interactions across multiple timescales. *Curr. Opin. Plant Biol.* 44, 108-116.

706 88. Dean, A.M. and Thornton, J.W. (2007) Mechanistic approaches to the study of evolution: the  
707 functional synthesis. *Nat. Rev. Genet.* 8 (9), 675-688.

708 89. Alizon, S. and Methot, P.O. (2018) Reconciling Pasteur and Darwin to control infectious diseases.  
709 *PLoS Biol.* 16 (1), e2003815.

710 90. Cooper, V.S. (2018) Experimental evolution as a high-throughput screen for genetic adaptations.  
711 *Mosphere* 3 (3), e00121-18.

712 91. Wannier, T.M. et al. (2018) Adaptive evolution of genomically recoded *Escherichia coli*. *Proc. Natl.*  
713 *Acad. Sci. U.S.A.* 115 (12), 3090-3095.

714 92. Kacar, B. et al. (2017) Experimental evolution of *Escherichia coli* harboring an ancient translation  
715 protein. *J. Mol. Evol.* 84 (2-3), 69-84.

716 93. Gifford, D.R. et al. (2018) Identifying and exploiting genes that potentiate the evolution of antibiotic  
717 resistance. *Nat. Ecol. Evol.* 2 (6), 1033-1039.

718 94. Hillesland, K.L. and Stahl, D.A. (2010) Rapid evolution of stability and productivity at the origin of a  
719 microbial mutualism. *Proc. Natl. Acad. Sci. U.S.A.* 107 (5), 2124-2129.

720 95. Hansen, S.K. et al. (2007) Evolution of species interactions in a biofilm community. *Nature* 445  
721 (7127), 533-536.

722 96. Barroso-Batista, J. et al. (2015) Adaptive immunity increases the pace and predictability of  
723 evolutionary change in commensal gut bacteria. *Nat. Commun.* 6, 8945.

724 97. Lenski, R.E. et al. (1991) Long-term experimental evolution in *Escherichia coli*. 1. Adaptation and  
725 divergence during 2,000 generations. *Am. Nat.* 138 (6), 1315-1341.

726 98. Notley-McRobb, L. et al. (2002) *rpoS* mutations and loss of general stress resistance in *Escherichia*  
727 *coli* populations as a consequence of conflict between competing stress responses. *J. Bacteriol.* 184  
728 (3), 806-811.

729 99. Rainey, P.B. and Travisano, M. (1998) Adaptive radiation in a heterogeneous environment. *Nature*  
730 394 (6688), 69-72.

731 100. Traverse, C.C. et al. (2013) Tangled bank of experimentally evolved *Burkholderia* biofilms reflects  
732 selection during chronic infections. *Proc. Natl. Acad. Sci. U.S.A.* 110 (3), E250-E259.

733 101. Bachmann, H. et al. (2013) Availability of public goods shapes the evolution of competing  
734 metabolic strategies. *Proc. Natl. Acad. Sci. U.S.A.* 110 (35), 14302-14307.

735 102. Hammerschmidt, K. et al. (2014) Life cycles, fitness decoupling and the evolution of  
736 multicellularity. *Nature* 515 (7525), 75-79.

737 103. Chao, L. and Levin, B.R. (1981) Structured habitats and the evolution of anticompeter toxins in  
738 bacteria. *Proc. Natl. Acad. Sci. U.S.A.* 78 (10), 6324-6328.

739 104. Baym, M. et al. (2016) Spatiotemporal microbial evolution on antibiotic landscapes. *Science* 353  
740 (6304), 1147-1151.

741 105. Jansen, G. et al. (2015) Evolutionary transition from pathogenicity to commensalism: Global  
742 regulator mutations mediate fitness gains through virulence attenuation. *Mol. Biol. Evol.* 32 (11), 2883-  
743 2896.

744 106. Giraud, A. et al. (2001) Costs and benefits of high mutation rates: Adaptive evolution of bacteria  
745 in the mouse gut. *Science* 291 (5513), 2606-2608.

746 107. Pankey, M.S. et al. (2017) Host-selected mutations converging on a global regulator drive an  
747 adaptive leap towards symbiosis in bacteria. *eLife* 6, e24414.

748 108. Rocha, E.P.C. (2018) Neutral theory, microbial practice: Challenges in bacterial population  
749 genetics. *Mol. Biol. Evol.* 35 (6), 1338-1347.

750 109. Maddamsetti, R. et al. (2017) Core genes evolve rapidly in the Long-Term Evolution Experiment  
751 with *Escherichia coli*. *Genome Biol. Evol.* 9 (4), 1072-1083.

752 110. Lescat, M. et al. (2017) Using long-term experimental evolution to uncover the patterns and  
753 determinants of molecular evolution of an *Escherichia coli* natural isolate in the streptomycin-treated  
754 mouse gut. *Mol. Ecol.* 26 (7), 1802-1817.

755 111. Yang, L. et al. (2011) Evolutionary dynamics of bacteria in a human host environment. *Proc. Natl.*  
756 *Acad. Sci. U.S.A.* 108 (18), 7481-7486.

757 112. Behe, M.J. (2010) Experimental evolution, loss-of-function mutations, and "the first rule of  
758 adaptive evolution". *Q. Rev. Biol.* 85 (4), 419-445.

759 113. Pal, C. et al. (2007) Coevolution with viruses drives the evolution of bacterial mutation rates.  
760 *Nature* 450 (7172), 1079-1081.

761 114. Gomez, P. and Buckling, A. (2013) Coevolution with phages does not influence the evolution of  
762 bacterial mutation rates in soil. *ISME J.* 7 (11), 2242-2244.

763 115. Rendueles, O. and Velicer, G.J. (2017) Evolution by flight and fight: diverse mechanisms of  
764 adaptation by actively motile microbes. *ISME J.* 11 (2), 555-568.

765 116. Huseby, D.L. et al. (2017) Mutation supply and relative fitness shape the genotypes of  
766 ciprofloxacin-resistant *Escherichia coli*. *Mol. Biol. Evol.* 34 (5), 1029-1039.

767 117. Bachmann, H. et al. (2012) Microbial domestication signatures of *Lactococcus lactis* can be  
768 reproduced by experimental evolution. *Genome Res.* 22 (1), 115-124.

769 118. Clerissi, C. et al. (2018) Parallels between experimental and natural evolution of legume  
770 symbionts. *Nat. Commun.* 9, 2264.

771

Figure 1 (revised)

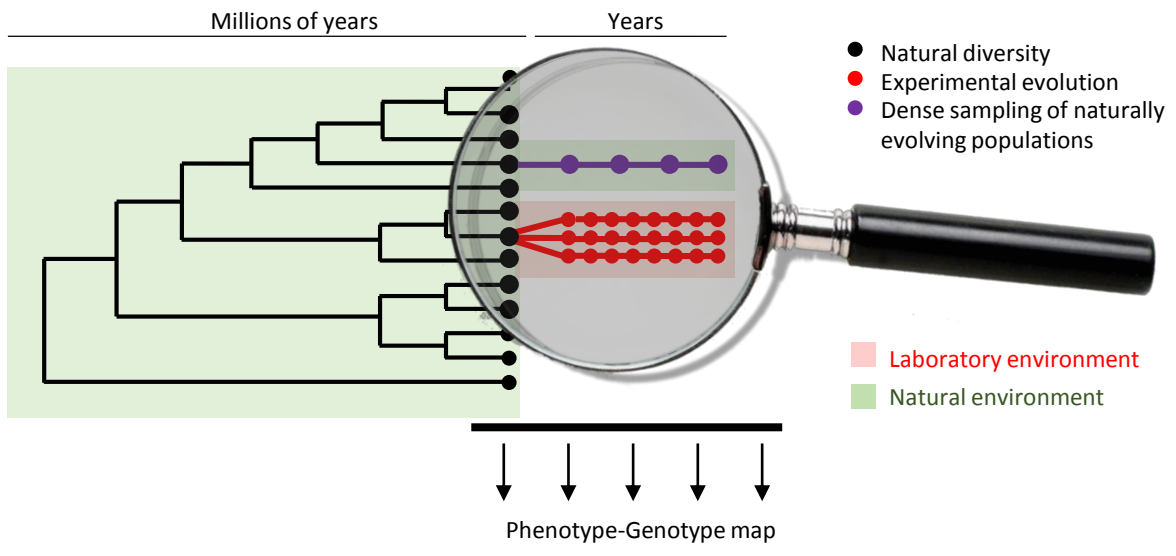
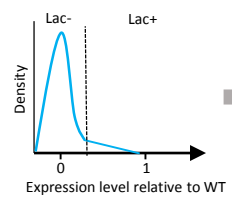
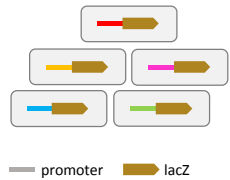




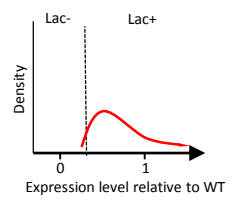
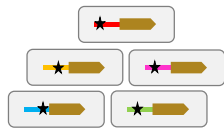
Figure 2 (revised)

**A** Random promoter library

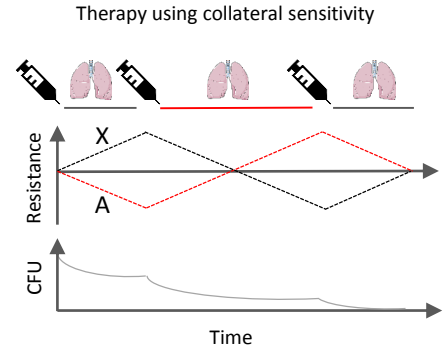
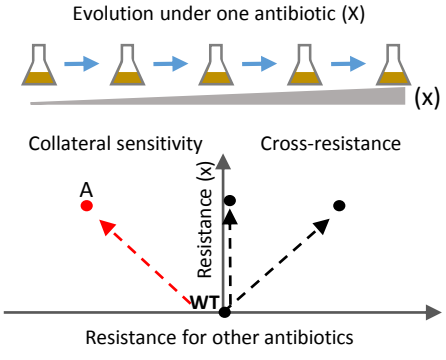


Serial cultures  
Lactose + glycerol

Evolved promoters



**B**



**C**

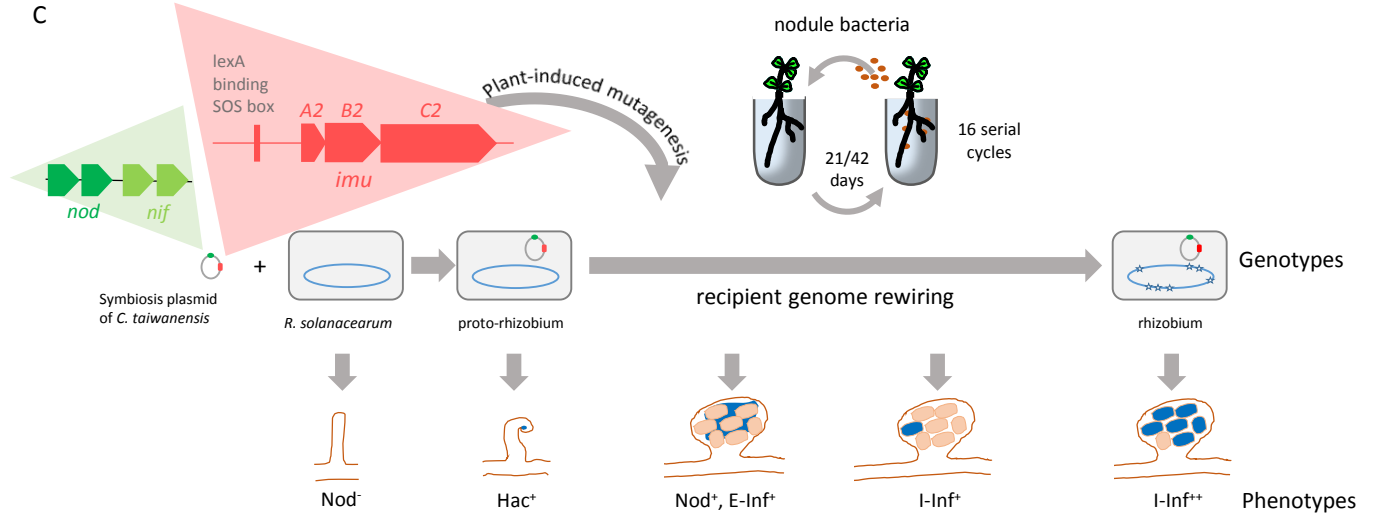
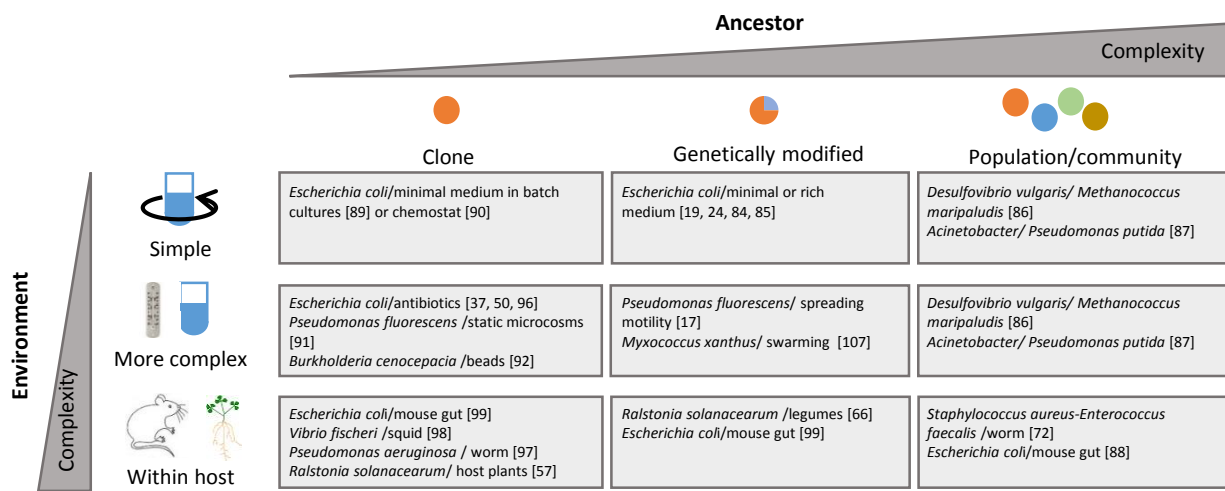


Figure 1 for Box 1 (revised)



## Highlights

- **Experimental evolution (EE)** can complement traditional molecular genetic studies on microbial systems.
- The diversity of EE approaches enabled progresses in many fields of microbiology, including molecular mechanisms of gene regulation, antibiotic resistance, and host-microbiome interactions.
- Under specific conditions, EE can parallel the evolution of natural systems.
- EE offers exciting perspectives to discover the function of new genes and probe evolution within communities.

**Outstanding questions:**

- Can we exploit mutations found in EE to characterise genes of unknown function?
- Can EE enlighten mechanisms slowing down the evolution of resistances?
- Can the EE of microbial communities bring new insights into their functional characteristics?
- Can we use within-host EE to identify host factors (and other environmental factors) shaping bacterial evolutionary trajectories **during infection**?
- Can EE reproduce the emergence of major intracellular symbiotic associations (**such as** mitochondria in eukaryotic cells, plastids in the green lineage, association between fungi and land plants, obligate endosymbionts of insects)?