



HAL
open science

Fungal Sex: The Basidiomycota

Marco E Coelho, Guus Bakkeren, Sheng Sun, Michael E Hood, Tatiana Giraud

► **To cite this version:**

Marco E Coelho, Guus Bakkeren, Sheng Sun, Michael E Hood, Tatiana Giraud. Fungal Sex: The Basidiomycota. *Microbiology Spectrum*, 2017, 5 (3), pp.147-175. 10.1128/microbiolspec.FUNK-0046-2016 . hal-02328823

HAL Id: hal-02328823

<https://hal.science/hal-02328823>

Submitted on 10 Mar 2020

HAL is a multi-disciplinary open access archive for the deposit and dissemination of scientific research documents, whether they are published or not. The documents may come from teaching and research institutions in France or abroad, or from public or private research centers.

L'archive ouverte pluridisciplinaire **HAL**, est destinée au dépôt et à la diffusion de documents scientifiques de niveau recherche, publiés ou non, émanant des établissements d'enseignement et de recherche français ou étrangers, des laboratoires publics ou privés.

Fungal Sex: The Basidiomycota

7

Marco A. Coelho,¹ Guus Bakkeren,² Sheng Sun,³
Michael E. Hood,⁴ and Tatiana Giraud⁵

BREEDING SYSTEMS AND LIFESTYLES IN THE BASIDIOMYCOTA

In the phylum Basidiomycota, a wide variety of lifestyles are represented. These range from well-known and conspicuous wood-decaying mushrooms, plant growth-promoting and mutualistic mycorrhizae, and crop-destroying smut and rust fungi, to yeast-like human pathogens. Lifestyle differences have consequences for the mating and breeding systems of these fungi (see “Glossary,” below, for definitions of specialist terms used in this article), which are reflected in the genetic evolution of mating-type determination. For over a century fungi have been recognized as having diverse breeding systems, from homothallism (i.e., universal compatibility among gametes, including among clone-mates) to heterothallism (i.e., mating among haploid gametes carrying different mating-type alleles). The study of breeding systems, for example, led to the discovery of the astounding variability in mating-type alleles among mushrooms, with thousands of different mating types in some species (1), and to the realization that in many fungal pathogens the process of sexual reproduction is closely linked to infection and pathogenicity (2) (Fig. 1). The importance of basidiomycete fungi and their great research tractability, from ecology to genomics, have brought major insights into the diversification of genetic mechanisms used to achieve sexual reproduction.

Diversity and Phylogenetic Relationships: Phylum Basidiomycota

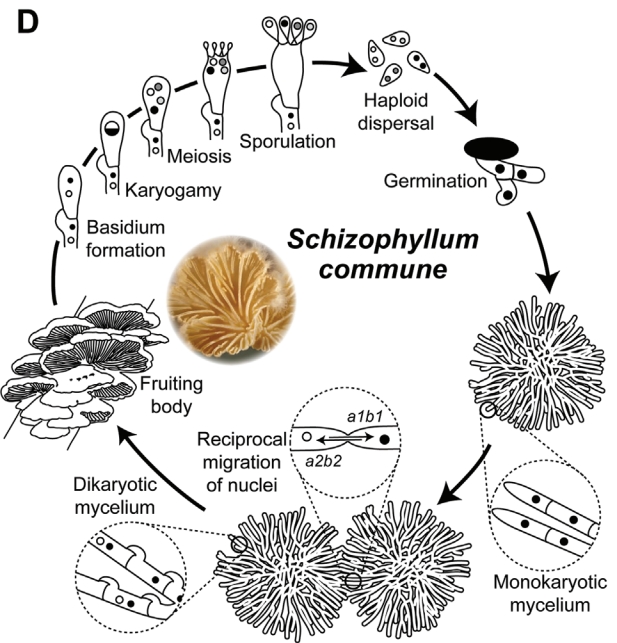
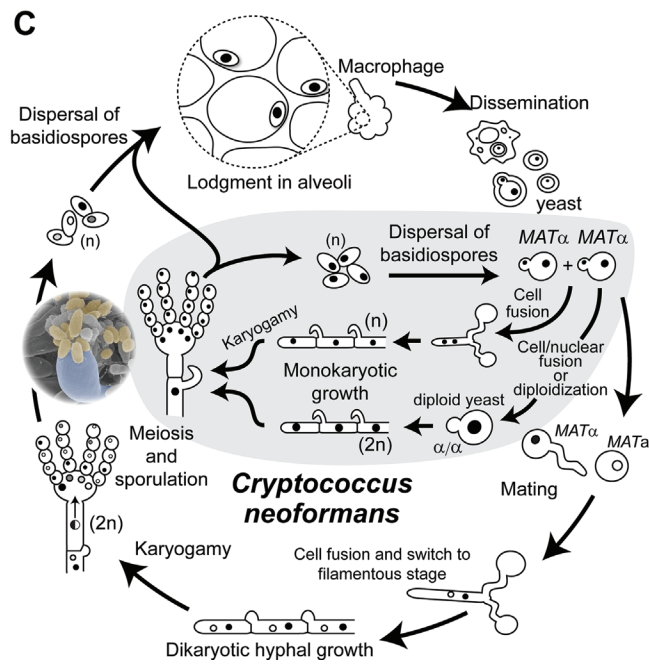
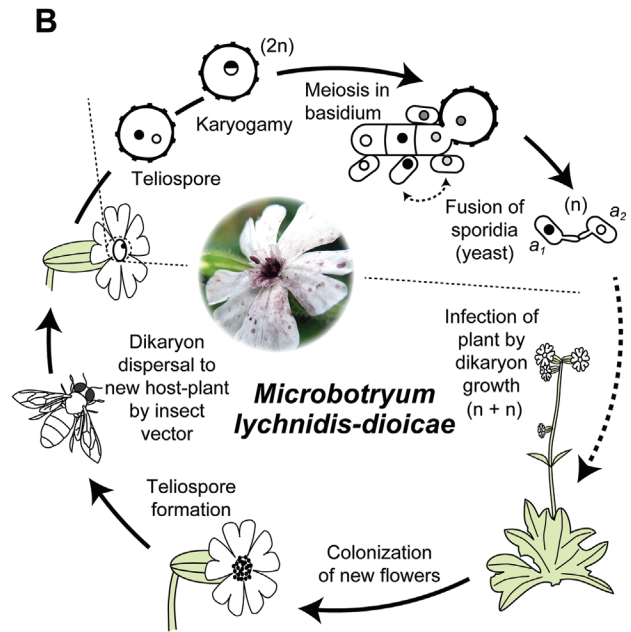
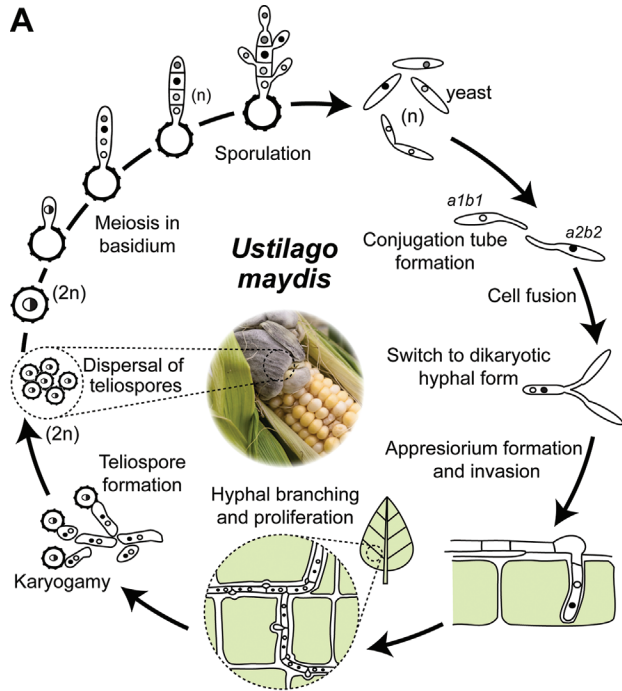
From a phylogenetic perspective, the phylum Basidiomycota is the sister group to the phylum Ascomycota, forming together the subkingdom Dikarya. Three inde-

pendently evolving lineages are strongly within the Basidiomycota (Fig. 2) (3). The subphylum Agaricomycotina contains most of the described species (ca. 21,000), including many mushrooms as saprophytes or mycorrhizal symbionts of plants, the jelly fungi, and a large diversity of yeasts, some of which are important pathogens of humans (*viz.*, *Cryptococcus neoformans*) (4, 5). The subphylum Ustilaginomycotina comprises more than 1,700 species, and while many species are pathogens of graminaceous plants (such as the maize smut *Ustilago maydis*), others are commonly associated with human and animal infections and are known from their asexual (anamorphic) states only (*viz.*, *Malassezia* spp.) (4, 6, 7). The subphylum Pucciniomycotina is a sister group of the clade containing Ustilaginomycotina and Agaricomycotina and consists of more than 8,400 described species (8). Besides the array of saprobic yeast species usually recovered from soils, aquatic habitats, or the phylloplane (e.g., *Rhodotorula* spp. and *Sporobolomyces* spp.) (9), most of the Pucciniomycotina species are plant parasites, such as the obligate pathogenic rust fungi (e.g., *Puccinia* spp.) or anther-smut fungi (*Microbotryum* spp.). Through the diversification of mating and dispersal stages, this huge variety of fungal lifestyles is highly integrated with equally diverse sexual cycles and breeding systems, a theme that has long been the subject of study by influential mycologists (1, 10–13).

Sexual Development and Determination of Cell Type Identity

Most fungi are able to undergo both asexual and sexual reproduction and have evolved tightly controlled mechanisms to regulate the process of mating, with respect

¹UCIBIO-REQUIMTE, Departamento de Ciências da Vida, Faculdade de Ciências e Tecnologia, Universidade NOVA de Lisboa, 2829-516 Caparica, Portugal; ²Agriculture and Agri-Food Canada, Summerland Research and Development Centre, Summerland, BC, V0H 1Z0, Canada; ³Department of Molecular Genetics and Microbiology, Duke University Medical Center, Durham, NC 27710; ⁴Department of Biology, Amherst College, Amherst, MA 01002; ⁵Ecologie Systématique Evolution, Univ. Paris-Sud, CNRS, AgroParisTech, Université Paris-Saclay, 91400, Orsay, France.



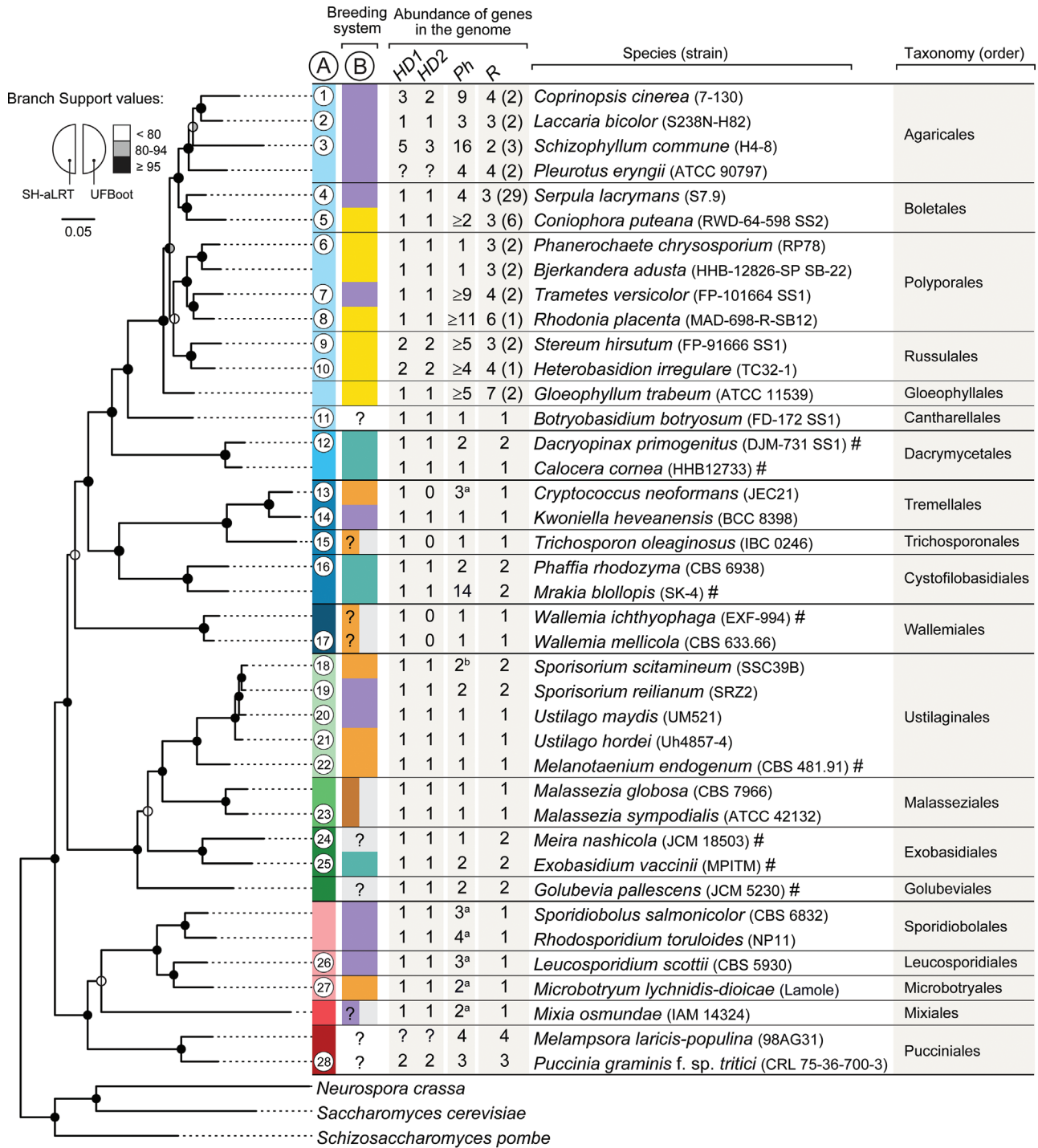
to timing, and gamete dispersal, recognition, and fusion. In basidiomycetes, the sexual cycle typically involves fusion of genetically distinct homokaryotic hyphae or haploid yeast cells to produce a dikaryon, in which the two haploid parental nuclei are replicated in a coordinated fashion without fusion during hyphal elongation, usually involving the formation of clamp connections (i.e., a hook-like structure formed by hyphal cells to ensure proper distribution of the two genetically distinct nuclei during mitotic cell divisions; see below) (14). Nuclear fusion (karyogamy) then takes place in the basidia or in other specialized structures (e.g., teliospores), after which the diploid nucleus undergoes meiosis to generate haploid basidiospores (meiospores) and complete the life cycle (see Fig. 1 for representative life cycles).

Despite the wide variation of sexual cycles in nature, one common underlying feature shared by most fungi is the lack of genetically determined anisogamy: many fungi are isogamous (i.e., where all gametes have the same sizes), and even in anisogamous species, all haploid genotypes produce both types of gamete sizes. This means that there are not individuals of different sexes in fungi (15). Furthermore, many fungi are heterothallic, meaning that syngamy can only occur between gametes of different genetically determined mating types (15–17).

In members of the sister phylum Ascomycota, mating-type identity is governed at a single genetic mating type

(*MAT*) locus (see reference 197). In that case, only two mating types segregate in meiosis, defining what is termed a bipolar system. By contrast, basidiomycetes have evolved a breeding system that relies on two genetic *MAT* loci. One locus encodes tightly linked pheromones and pheromone receptors (hereafter referred to as the *P/R* locus), and the other encodes homeodomain-type transcription factors (hereafter, *HD* locus), determining viability following syngamy. For successful mating and completion of the sexual cycle, haploid cells that conjugate must differ at both *MAT* loci (18, 19). When the two *MAT* loci are unlinked, four mating types can be generated by meiosis among the haploid progeny, defining this as a tetrapolar breeding system. Other basidiomycetes have instead a bipolar system controlled by a single *MAT* locus, either because the *P/R* and *HD* loci are linked or because one has lost its function in mating-type determinism. In mushroom-forming species (Agaricomycetes), there has been a generalized diversification of alleles at both *MAT* loci, in some cases yielding species with hundreds or thousands of possible mating types (1, 20–22). Data compiled from early studies indicate that as many as 65% of the species in the Agaricomycotina are tetrapolar (13, 23), whereas classical mating studies indicate a predominance of bipolar systems in the majority of the Ustilaginomycotina (24) and the Pucciniomycotina (25). In the following sections we summarize current knowledge of the

Figure 1 General life cycles of dimorphic and mushroom-forming basidiomycetes. Three basidiomycetes are pictured where sexual reproduction and a dimorphic switch between a yeast cell and a hyphal form are crucial to infection of plant (A, B) or animal (C) hosts. The haploid yeast forms of the maize smut *Ustilago maydis* (A) and the anther smut *Microbotryum* spp. (B) are nonpathogenic and can undergo asexual mitotic vegetative growth. In *Microbotryum*, the yeast stage is, however, short-lived because mating occurs mostly between cells within the same tetrad. Upon mating with a compatible partner, both fungi switch to an enduring infection hyphal form (dikaryon; $n + n$) that can invade the host plant. Proliferation and differentiation of *U. maydis* (A) in the plant culminates with the production of masses of wind-dispersing diploid spores (teliospores; $2n$) in large tumor-like tissues, whereas in *Microbotryum* (B), teliospores are formed in the anthers of infected flowers and transmitted by pollinators onto healthy plants. In the case of *Cryptococcus neoformans* (C), the single-celled yeast form may be free-living or mycoparasitic. A similar dimorphic switch occurs upon mating of yeast cells of opposite mating type (α or α), ultimately resulting in the infectious propagules (basidiospores) that potentially infect an animal host after dispersal. These infectious structures may also be generated by haploid selfing (depicted with gray background), where fusion occurs between homothallic cells carrying identical *MAT* alleles (α/α diploid is depicted) and form monokaryotic hyphae with unfused clamp connections (see text for details). In mushroom-forming fungi such as *Schizophyllum commune* (D), germination of haploid spores yields haploid monokaryons capable of independent growth. When two compatible monokaryons meet, a fertile clamped dikaryon is formed which develops into fruiting bodies (mushrooms) triggered upon suitable environmental cues, where basidia arise. In all these and other basidiomycetes, nuclear fusion (karyogamy) is usually delayed until the formation of basidia (or teliospores). Meiosis ensues, generating four haploid nuclei, which give rise to basidiospores to complete the cycle. Adapted from Morrow and Fraser (2) and Nieuwenhuis et al. (17) with permission of the publishers.



Key: (A) Agaricomycotina Ustilaginomycotina Pucciniomycotina

- Agaricomycetes
- Dacrymycetes
- Tremellomycetes
- Wallemiomycetes
- Ustilaginomycetes
- Malasseziomycetes
- Exobasidiomycetes
- Microbotryomycetes
- Mixiomycetes
- Pucciniomycetes

(B) Heterothallic

- Tetrapolar
- Bipolar (loss of P/R from MAT)
- Bipolar (linked P/R and HD loci)
- Pseudo-bipolar
- Homothallic
- Anamorphic
- ? Undetermined

molecular basis of mating-type determination in basidiomycetes and discuss transitions in breeding systems, using examples from throughout the Basidiomycota phylogenetic diversity.

MOLECULAR DETERMINANTS OF MATING TYPE

The Pheromone/Receptor Sensing System

In the Basidiomycota, syngamy is governed by, in its simplest form, small 10- to 15-amino acid-lipopeptide pheromones derived from 35 to 40 amino acid precursors through posttranslation modifications at both the N- and C-termini (26–28). These diffusible pheromones are received by seven transmembrane-domain pheromone receptors, coupled to a G-protein for downstream signal transduction (28, 29). This molecular determination of mating fusion is similar in part to the *a*- and α -factor *P/R* system in the ascomycetes and is thought to predate the separation of Asco- and Basidiomycota lineages. There is, however, one remarkable difference between the phyla: only homologues of genes encoding the pair of the *a*-factor pheromone and Ste3 pheromone receptor of the ascomycete system appear to exist in basidiomycetes. Therefore, instead of the *a*-factor/Ste3 and α -factor/Ste2 coupled sensing system characteristic of the ascomycetes (described in reference 197), “chemo-sensing” specificity in basidiomycetes is mediated by allelic variants of the same type of genes (18). Mating is often initiated by a reciprocal exchange of pheromones recognized by matching pheromone receptor variants in both mating types, and thus two strains need to carry different alleles of the pheromone and receptor genes at the *P/R* locus.

All active basidiomycete mating pheromones isolated so far are hydrophobic diffusible lipopeptides that undergo farnesylation at the C-terminal cysteine residue of the CAAX motif (where “C” is cysteine, “A” is often an aliphatic amino acid, and “X” is any residue) and amino-terminal processing. This was first demonstrated in the secreted pheromone (rhodotorucine A) of the red-pigmented yeast *Rhodospiridium toruloides* (recently renamed *Rhodotorula toruloides*) (30, 31) and later extended to many other basidiomycetes (26, 32–36), and also for the *a*-factor of the ascomycete yeast *Saccharomyces cerevisiae* that now stands as the model paradigm for the fungal kingdom (37, 38).

Among the basidiomycetes, exceptional pheromone gene structures were revealed in members of the Pucciniomycotina. Where investigated, the pheromone precursor genes each encode tandem copies of the mature peptide moiety (39–43), and an initial step of processing of a spacer region is required to reveal C-terminal CAAX motifs for each repeat (37, 44). In species where pheromones of opposite mating types have been clearly identified (namely, in *R. toruloides*, *Sporidiobolus salmonicolor*, *Leucosporidium scottii*, and *Microbotryum* spp.), the *MAT A1* pheromone precursor typically presents a greater number of repeats of the peptide moiety (up to six copies in some species), whereas the *MAT A2* pheromone gene appears to encode only one or two copies of the mature pheromone (39, 42, 43, 45). Interestingly, this increased production of pheromone per mole of precursor in *MAT A1* cells, possibly allowing communication with *A2* cells at longer distances, is consistent with the observed asymmetric growth of conjugation tubes in both *R. toruloides* (46) and *Microbotryum* spp. (43, 47), which occurs earlier and to a greater extent from *MAT A2* cells. These

Figure 2 Phylogeny of the Basidiomycota indicating the breeding system and the number of *MAT* genes across representative species of the three subphyla. The breeding system and the different taxonomic lineages are color-coded as given in the key and are kept consistent in all figures. Gene numbers shown for each species were obtained either from previous reports (20, 41, 100) or from newly surveyed genome data (marked with a hash sign after the species name). In the Agaricomycetes, values shown in parentheses are putative non-mating-type pheromone receptors. A question mark indicates cases where information on the breeding system is not available or is uncertain (e.g., because the sexual stage of a species is unknown). A schematic representation of the *P/R* and *HD* loci is given in Fig. 3 for representative species of each lineage marked with numbers enclosed in white circles. Letters in superscript next to the number of pheromone precursor genes indicate that (a) all genes encode the same mature pheromone peptide or that (b) no CAAX motif was detected in one of the putative pheromone precursors. The species phylogenetic tree was constructed in IQ-TREE (193) using a previously described approach (194). Branch support values are shown in the tree nodes as given in the key and were assessed with the ultrafast bootstrap approximation (UFBoot) and the approximate likelihood ratio test (SH-aLRT), each with 1,000 replicates. The basidiomycete clade is rooted with sequences from Ascomycete fungi.

findings suggest that the two mating types may have distinct signaling roles during conjugation, despite the absence of morphologically differentiated cells.

In response to the interaction of the pheromone ligand with a suitable pheromone receptor, mating and sexual development are initiated through a heterotrimeric G protein located at the plasma membrane that triggers a variety of downstream signaling processes. In *U. maydis*, where this has been investigated in greater detail, this signaling is attributed to two interconnected pathways involving a cAMP-dependent protein kinase A and a mitogen-activated protein kinase (28, 48–50). The point of convergence of the two pathways is the pheromone response factor (Prf1), which is an HMG-box transcription factor that recognizes and binds to pheromone response elements located in the regulatory regions of pheromone-induced genes (51, 52). Interestingly, whereas most of the core components of the mitogen-activated protein kinase cascade pathway (e.g., Ste11, Ste7, Fus3) are conserved over wide evolutionary distances, the key downstream transcription factors that ultimately activate or repress their target genes are often not conserved among species and thus are difficult to reveal through candidate gene approaches or sequence comparison.

Homeodomain Transcription Factors: The Second Compatibility Checkpoint

While the *P/R* system controls syngamy, the production of viable mating products requires compatibility at additional genetic components in the basidiomycetes, which is mediated by genes at the *HD* locus. In its most basic configuration, the *HD* locus encodes a pair of proteins of dissimilar homeodomain classes, having protein domains HD1 or HD2, and their coding genes are normally adjacent and divergently transcribed. Development following syngamy depends upon the formation of functional heterodimeric transcription factors where dimerization is restricted to HD1 and HD2 proteins that originate from haploid mates bearing different alleles of the *HD* locus. This requirement ensures that active heterodimers are only formed in the dikaryotic stage and do not arise in haploid cells. Failure to form heterodimers in the haploid is explained by interfering amino acids at HD1 and HD2 proteins from the same allele that disturb their general cohesiveness (53–55). Studies have shown that the relevant interfaces for discriminating HD1-HD2 interactions and determining allele specificity seem to be located N-terminally to the DNA binding motifs and that this region is usually highly variable between different alleles of both *HD1* and *HD2* genes (53, 54, 56). Analyses in *U. maydis* of

chimeric and mutant alleles and protein-protein interaction studies using the yeast two-hybrid system revealed that dimerization between HD1 and HD2 proteins involves polar-hydrophobic interactions with variable cohesive contact sites contributing to binding affinity (54, 57, 58). Once formed, the functional heterodimers will bind to gene promoter elements, leading to the induction of the specific sets of genes involved in subsequent differentiation, which can include a morphological switch from yeast-like cells to filamentous growth and pathogenicity, as in the smuts, or fruiting body formation in the mushrooms (28, 41, 58–60).

BREEDING SYSTEMS IN THE BASIDIOMYCOTA

The distinction between heterothallic and homothallic compatibility represents a fundamental breeding system classification in fungi, and both systems are found across the Basidiomycota. In heterothallic basidiomycete species, sexual reproduction is only possible between gametes carrying different alleles at both *MAT* loci, preventing intrahaploid mating (i.e., selfing at the haploid level) (61). On the other hand, homothallic species produce universally compatible gametes, each being able to undergo intrahaploid mating with their clonemates. We have summarized in Fig. 2 and Fig. 3 data regarding the breeding system and the genomic organization of the mating-type genes in representative species of the three major subphyla of the Basidiomycota, some of which will be highlighted in the following sections.

Tetrapolar Systems: *U. maydis* and Other Smut Relatives

The maize smut *U. maydis* (order Ustilaginales; Fig. 2) is one of the most intensively studied basidiomycete models with respect to the organization and function of mating-type genes (62). The fungus has a dimorphic life cycle with a yeast-like haploid saprophytic phase switching to filamentous pathogenic growth in the dikaryotic stage following syngamy (Fig. 1A). In this species, the process of mating and completion of the sexual cycle is regulated by a tetrapolar breeding system, i.e., with the *P/R* (or *a*) locus unlinked from the *HD* (or *b*) locus. The *P/R* locus exists in two allelic forms (*a1* and *a2*), which are defined by structurally dissimilar DNA regions of 4.5 kb for the *a1* and 8 kb for the *a2*, each comprising one pheromone receptor gene (*PRA1* or *PRA2*) and one pheromone precursor gene (*MFA1* or *MFA2*) (Fig. 3B). The Pra1 receptor only responds to the Mfa2 pheromone, while Pra2 can

only recognize Mfa1. The observed size difference between the two allelic forms of the *P/R* locus is due to the presence in the *a2* allele of two additional genes (*Iga2* and *rga2*) that direct uniparental mitochondrial DNA inheritance, as well as a third, nonfunctional pheromone-encoding gene (26, 33, 52, 63).

Interestingly, the presence of this pseudogene led to early speculations about the existence of a complex scenario ancestral to the Ustilaginales in which the *P/R* locus occurred in more than two allelic forms, with this additional cryptic pheromone gene being recognized by a distinct receptor encoded by a third unidentified *P/R* allele (52). This hypothesis was substantiated upon characterization of the breeding system of the closely related head smut fungus *Sporisorium reilianum*. Compared to *U. maydis*, the *P/R* locus of *S. reilianum* exists in three alleles, each containing two distinct pheromone genes and one pheromone receptor (64) (Fig. 3B). Importantly, each of the mature pheromones in one allele interacts specifically with only one of the receptors encoded by the other two alleles. For instance, the pheromones encoded by the *MFA1.2* and *MFA1.3* genes at the *a1* locus interact with the Pra2 and the Pra3 receptors encoded by the *a2* and *a3* alleles, respectively (Fig. 3B). This leads to a scenario in which each mating type can detect (and be detected by) the other two, but not itself. Additional support for this ancestral triallelic *P/R* system model was more recently attained in a study where the complete *P/R* loci of additional smut species spanning about 100 million years of evolution in the order Ustilaginales were sequenced and compared (65). Interestingly, the three *P/R* alleles previously described in *S. reilianum* were conserved and generally syntenic among members of the same order. This supports a potential scenario in which the biallelic *P/R* system as observed in *U. maydis* resulted from the loss of the *a3* allele and loss of one of the two pheromone genes, which is now lacking in extant *a1* and *a2* alleles. Accordingly, a phylogenetic analysis using pheromone receptor sequences from a wider taxonomic range (Fig. 4) shows that all Ustilaginomycotina receptors group together and within one of the three allelic classes previously defined (*PRA1*, *PRA2*, *PRA3*) (65). This result denotes that the triallelic *P/R* system is probably as old as the stem age of the Ustilaginomycotina, about 450 million years (66).

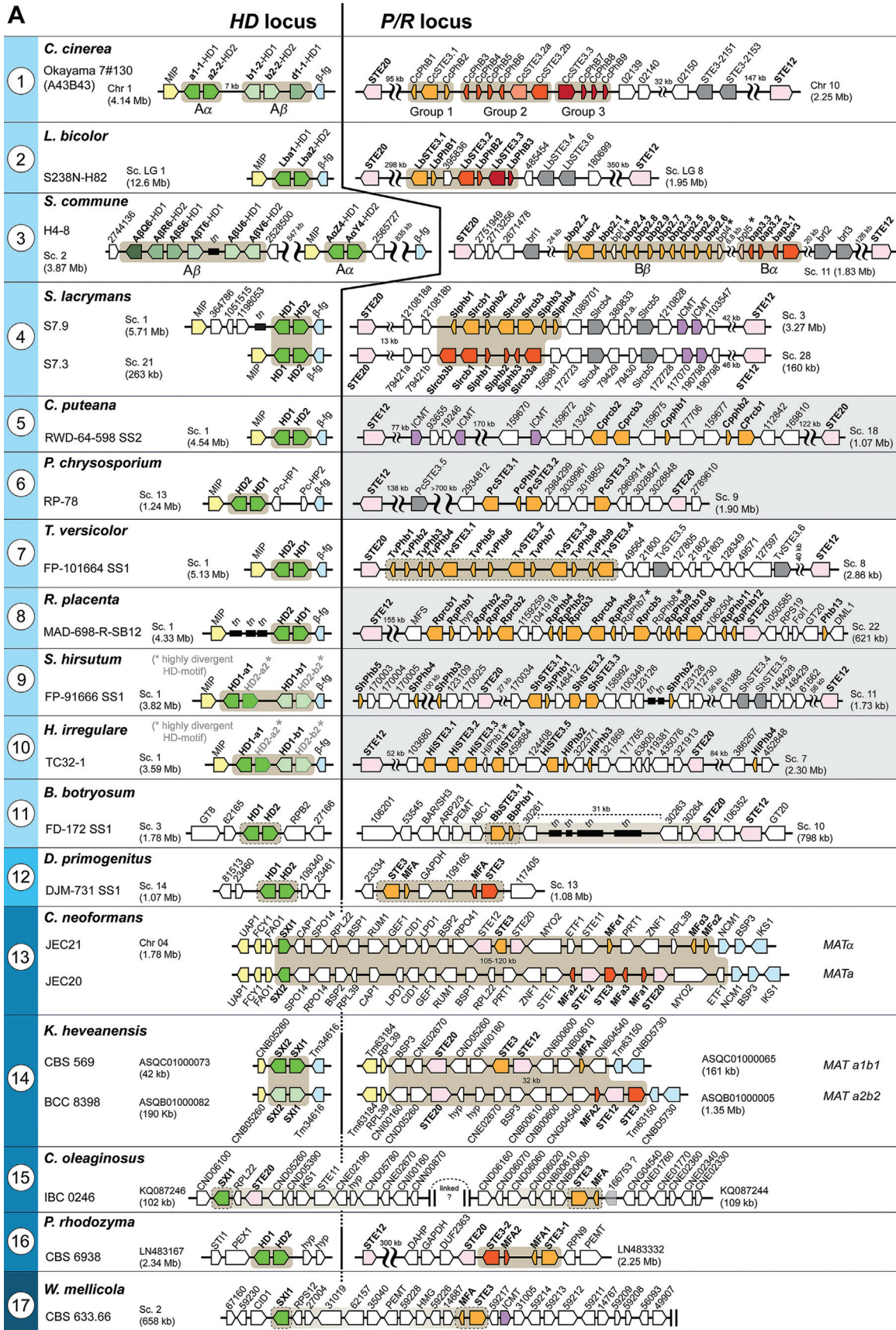
Following fusion of compatible partners, heterozygosity at the *HD* locus is required for dikaryon maintenance and filamentous growth in *U. maydis* (54, 67). The two divergently transcribed *HD* genes encode homeodomain proteins known as bE (for *bEast*; HD1-type) and bW (for *bWest*; HD2-type). However,

in contrast to the biallelic and triallelic *P/R* locus of *U. maydis* and *S. reilianum*, respectively, the *HD* locus is highly multiallelic: in *U. maydis* more than 30 inter-compatible allelic versions were found in nature (68; DeVay, cited in 69), while in *S. reilianum* five alleles have been identified so far (64). The homeodomains and C-terminal regions of the allelic HD1 and HD2 proteins are highly conserved, whereas the sequences N-terminal to the homeodomain regions are highly variable and required for the interaction of nonallelic HD1 and HD2 proteins (54).

Variation in Tetrapolar Systems beyond *Ustilago/Sporisorium*

Outside the Ustilaginomycotina, the number of tetrapolar species characterized for molecular polymorphisms at the *MAT* loci has increased in recent years (42, 45, 70–74). *Kwoniella heveanensis* (70) and *Cryptococcus amylolentus* (71) in the Agaricomycotina and *L. scottii* (42) in the Pucciniomycotina are examples where the *P/R* locus is biallelic, while the *HD* locus displays greater polymorphism (Fig. 2 and 3). In all three, the *P/R* and *HD* loci localize to different chromosomes. Sequencing of the *P/R* locus in each species showed their biallelic nature but, in comparison to *U. maydis* and *S. reilianum*, the *P/R* locus in *K. heveanensis* and *L. scottii* covers a relatively larger genomic region (about 32 kb and 50 kb, respectively; Fig. 3A and 3B), which is highly rearranged between mating types. Included here are the genes encoding *MAT*-specific pheromones (*MFA* or *RHA*) and receptors (*STE3*), as well as genes previously shown to be required for the onset of filamentation in dimorphic species (e.g., *STE20*, *STE12*) (75–77) and lineage-specific genes not obviously involved in mating (Fig. 3). The *HD* locus in *K. heveanensis* and *C. amylolentus* contains only the divergently transcribed homeodomain genes, *HD1* and *HD2* (named *SXI1* and *SXI2*) (70, 71). In *L. scottii*, in contrast to *K. heveanensis* and *C. amylolentus*, the boundaries of the *HD* locus may have extended further outside from the *HD1/HD2* gene module, given the evidence of increased sequence divergence in a region spanning about ~80 kb that encompasses the *HD1/HD2* genes (42). Sequence analysis of this variable region from different *K. heveanensis* isolates provided evidence that the locus is multiallelic with at least six different *HD1/HD2* alleles (70). The same holds true for *L. scottii*, but with 28 *HD* alleles being revealed upon inspection of 43 isolates (42).

From an evolutionary standpoint, it is noteworthy that extant tetrapolar dimorphic basidiomycetes have more commonly a biallelic *P/R* locus (26, 70–72, 74,



78). For these, the proportion of compatible mates in the population cannot exceed 50%, irrespective of the number of alleles at the *HD* locus. However, given that compatibility at the *HD* locus can only be assessed after syngamy, increased *HD* allele diversity should be naturally selected when outcrossing is the rule, to allow more frequent dikaryon viability after syngamy and, in this way, limit the amount of wasted mating opportunities.

Tetrapolar Systems with Multiple Alleles in the Agaricomycetes

A vast repertoire of mating types has been found in most members of the class Agaricomycetes (Fig. 2), such as the wood-rotting mushroom *Schizophyllum commune* (Fig. 1D) with more than 15,000 intercompatible mating types, and the ink cap mushroom *Coprinopsis cinerea* with an estimated 12,000 distinct mating types (1). Such diversity is likely due to selection for rare alleles under outcrossing: any new specificity will be compatible with all extant mating types and therefore may increase in frequency under this selective advantage (15, 79). Studies have shown that two hallmarks of the *MAT* loci of these and other heterothallic Agaricomycetes account for such astonishing numbers of mating types within a single species. First, a single locus may itself be extremely polymorphic, in some cases with hundreds of specificities (1, 13, 16); second, for some species, multiallelism in both *P/R* and *HD* loci is generated by rounds of segmental duplication and diversification of *MAT* genes, resulting in

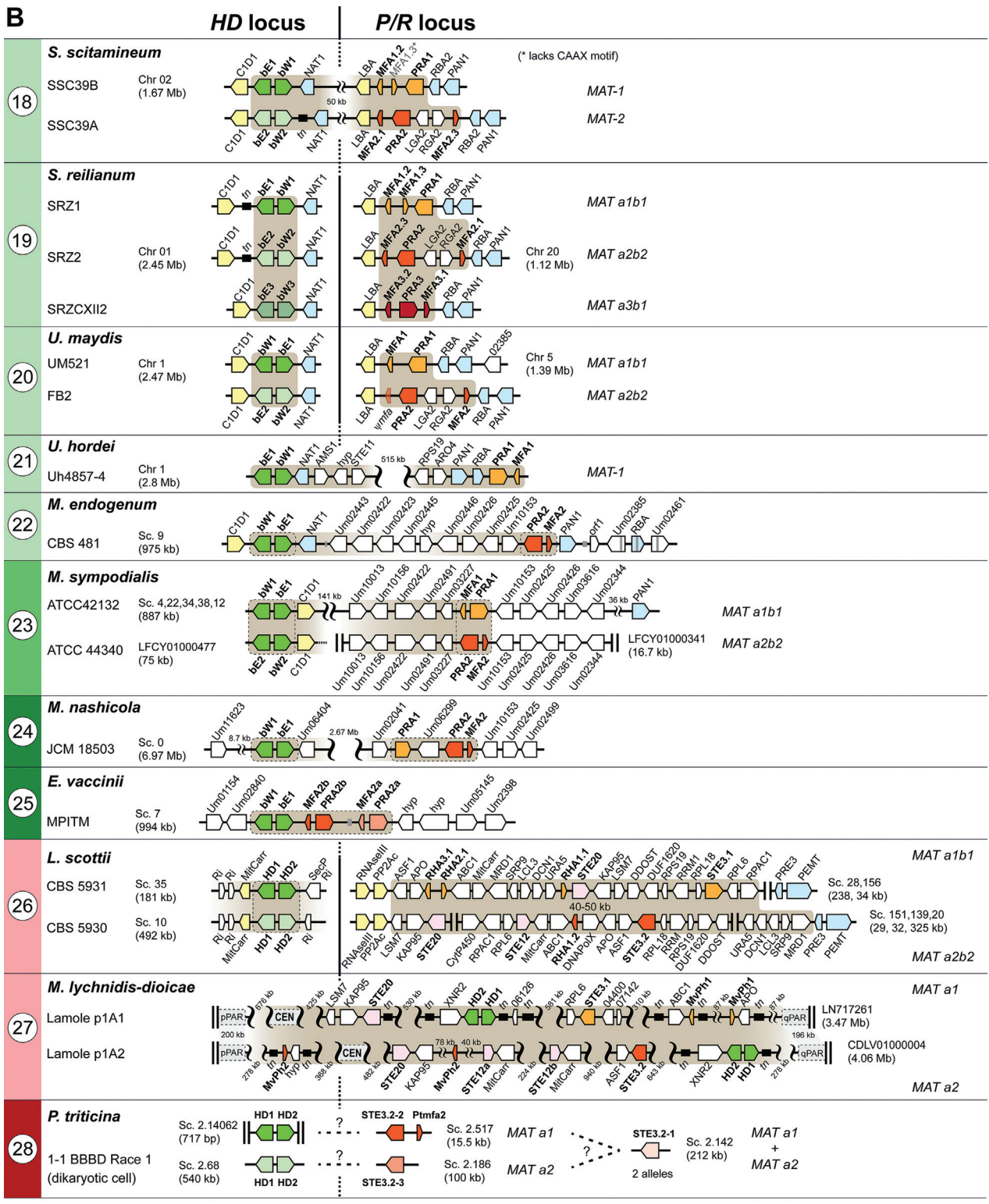
independent but functionally redundant subloci, upon which recombination can act to give rise to novel allele specificities and, by definition, new mating types (80).

Recent advances in genome sequencing are now allowing detailed comparisons of *MAT* loci among diverse species, and a comparative overview of these genomic regions in several Agaricomycetes is presented in Fig. 3A. A great body of literature exists on the mating-type systems and distribution in Agaricomycetes, preventing a full discussion, and the reader is referred to some exceptional and recent reviews (16, 20). Here, we shall concentrate mainly on the model mushroom *C. cinerea*, which has long served as an invaluable model to understand the molecular underpinnings of multiple mating types and multiallelic *MAT* loci in the Agaricomycetes. Where relevant, reference will be made to other mushroom species, but many of the principles that govern the evolution of multiple mating types in *C. cinerea* seem also to hold in other species.

Initial studies in *C. cinerea* using classical genetics determined that the *HD* locus is multiallelic and composed of two subloci (*A* and *A'*; Fig. 3A) that can recombine at detectable frequencies despite their close proximity in the genome (81, 82). Molecular genetic studies and genome sequencing later revealed that, whereas the *A* sublocus encodes one *HD1/HD2* gene pair, the *A'* sublocus encodes up to three pairs and is located at a distance of ~7 kb from the *A* sublocus (Fig. 3A) (83–86). Recombination between the two subloci is possible through the ~7 kb-long intergenic

Figure 3 Schematic showing the genomic structure and diversity of *MAT* loci in representative basidiomycete lineages. The genomic organization of the homeodomain (*HD*) and pheromone/receptor (*P/R*) *MAT* loci is shown for selected species of (A) the Agaricomycotina and (B) the Ustilaginomycotina and Pucciniomycotina. Arrows indicate genes and their direction of transcription. Putative *MAT* loci are shaded in light brown, and *MAT* genes are colored as indicated in the key with different color grades representing different alleles (or paralogs). When known, conserved genes flanking *MAT* loci (colored light yellow or light blue) are shown within each lineage. Genes that encode components of the pheromone response pathway are shown in pink and are in many cases within the *MAT* locus. Putative homologs of a protein required for posttranslational modification of pheromone precursors (isoprenyl cysteine methyltransferase [ICMT]) are colored purple and appear near the *P/R* locus in some species. *P/R* loci no longer determining mating-type specificity in bipolar Agaricomycetes are depicted with a gray background. In *M. lychnidis-dioicae*, the two mating-type chromosomes are highly rearranged and enriched in transposable elements, so that only a small number of genes is depicted. Of note, whereas in *M. nashicola* *P/R* and *HD* genes are far apart on the same chromosome, in *E. vaccinii* and *M. endogenum* the two sets of genes are closer together. Other genes or genomic features are colored or represented as given in the key. For citations and additional details, see text. Gene names or their associated protein accession numbers are shown as they appear in their respective genome databases, except in species of Ustilaginomycotina and Tremellomycetes, where names were given based on sequence identity to the closest homolog in *U. maydis* and *C. neoformans*, respectively.

Figure 3 continues on next page



Key to symbols:

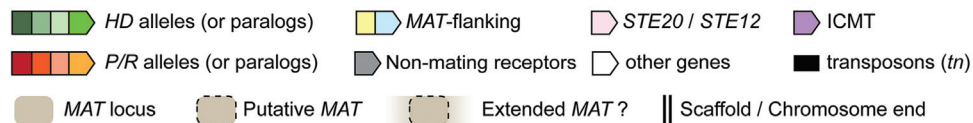


Figure 3 continued

region that is highly conserved between alleles. Sequence and functional analysis of five *HD* alleles led to a theoretical archetypal structure for the *C. cinerea* *HD* locus with three paralogous *HD1/HD2* gene pairs (known as the *a*, *b*, and *d* pairs). This implies that molecular mechanisms akin to gene deletion have been at work during evolution of the *HD* locus, because the extant alleles have fewer than the six *HD1/HD2* genes postulated in the model (exemplified by allele *A43* in Fig. 3A) (83–85). At present, four, seven, and three distinct alleles have been identified for the *a*, *b*, and *d* pairs, respectively (56, 85), generating 84 *HD* alleles considering all possible permutations. Although this is about half the number estimated by John Raper, 160 *HD* alleles in nature (1), the identification of one additional allele per group would be sufficient to reach Raper's estimates. However, the actual numbers of alleles in nature are of course unknown.

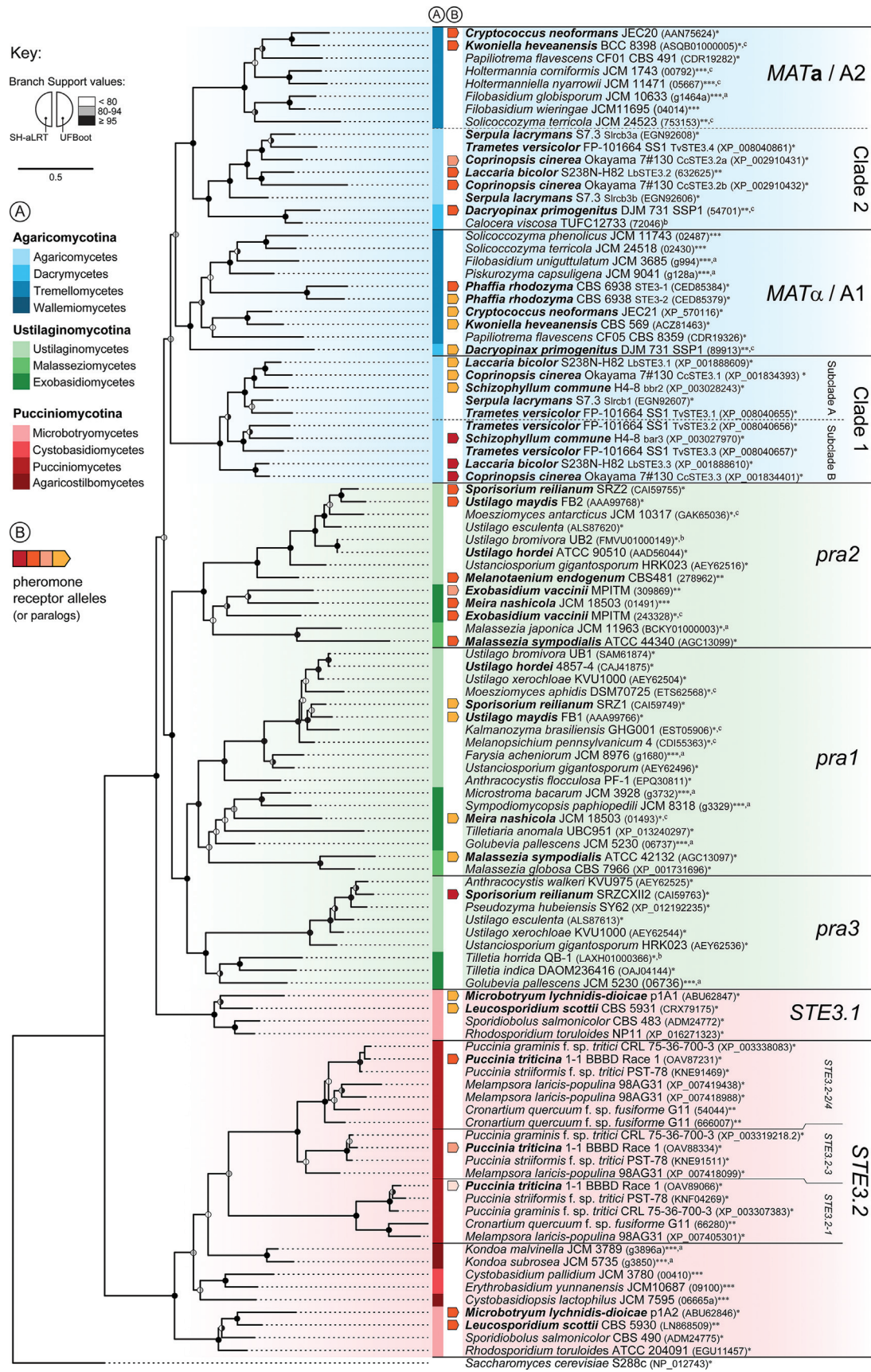
Similarly, the *P/R* locus in *C. cinerea* is multiallelic and consists of three tandemly arranged but independent groups of paralogous genes (groups or subloci 1 to 3). The sequencing of several alleles revealed that each group contains multiallelic and functionally redundant genes encoding at least one pheromone receptor and up to four pheromone genes (Fig. 3A) (20). In any given group of paralogous genes, the relative order, direction of transcription, and number of genes may vary and, importantly, each group has freely interchangeable alleles (80). In *C. cinerea*, from 13 sequenced *P/R* alleles, two, five, and seven alleles were identified for groups 1, 2, and 3, respectively. Together, this gives rise to 70 possible combinations, approaching the number of 79 *P/R* alleles estimated to exist in nature (1). Phylogenetic analyses of *C. cinerea* receptors of the three paralogous gene groups and from different alleles added yet another layer of complexity in the evolutionary history. Strikingly, the different allelic versions of the pheromone receptors as defined by their position within the *P/R* locus do not always fall into the same clade (20, 80), an observation that led some authors to conclude that gene shuffling occurred within the locus during evolution (80). This pattern has also been observed in *S. commune* (87) and in *Ganoderma lucidum* (88). Such relocations may have restricted intralocus recombination at some point during evolution, thereby contributing to the fixation of some of the alleles in the populations.

With additional pheromone receptors from other Agaricomycetes added to the phylogenetic analysis, the origin of the paralogous groups of genes within the *P/R* locus can be traced back to an early stage of the evolution of this taxonomic lineage, with a duplication event initially separating these genes into two distinct

evolutionary groups (clades 1 and 2 in Fig. 4). More recent duplications (e.g., *CcSTE3.1* and *CcSTE3.3* in *C. cinerea* or *LbSTE3.1* and *LbSTE3.3* in *Laccaria bicolor*) (Fig. 4) followed by sequence diversification and recombination (80) are suggested to have led to the high numbers of alleles presently estimated from natural populations of several mushroom species (16, 20, 41, and references therein).

In *C. cinerea* and other Agaricomycetes, each encounter of two monokaryotic hyphae results in promiscuous cell-cell fusion irrespective of whether or not they are compatible at *MAT* (18, 89). However, for the development and maintenance of the dikaryon, nuclei of interacting partners must harbor different allelic versions of genes in at least one sublocus of both *P/R* and *HD* loci (18, 89–91). Classical genetic analyses of these semicompatible interactions in *C. cinerea* and *S. commune* have shown that the *P/R* system is involved in events that follow hyphal fusion, namely in the reciprocal exchange and migration of nuclei and clamp cell fusion (Fig. 5). On the other hand, genes encoded at the *HD* locus repress asexual sporulation (92), regulate pairing of nuclei within the dikaryotic tip cell, and coordinate nuclear division, clamp cell formation, and septation from the subapical cell (1, 18, 93) (Fig. 5). If the two mates share identical alleles at *P/R* and *HD* loci, no nuclear exchange occurs and the fungal individuals resume monokaryotic growth.

Additional pheromone receptor-like genes (i.e., *STE3*-like) have been identified from numerous Agaricomycetes using sequence similarity-based approaches (Fig. 3A), and many fall within one of the three clades of Agaricomycete mating-type receptors (subclades A and B of clade 1 as well as clade 2) (Fig. 4). However, their function remains largely elusive, because reports suggest that these are non-mating-type-specific receptors (94, 95), and experimental evidence from *S. commune* suggests that they are not sufficient *per se* to induce mating-specific development (96). Many of these non-mating-type-specific receptors are located in the close neighborhood of the *P/R* locus, while others are unlinked (Fig. 3A). Three distinctive features of these *Ste3*-like receptors are seen in comparison to the mating-type-specific receptors: (i) they present longer C-terminal cytoplasmic regions, (ii) lack pheromone genes in close association, and (iii) show lower levels of intraspecific polymorphism. Non-mating-type-specific receptors have been documented in *C. cinerea* (41), *Phanerochaete chrysosporium* (97), *L. bicolor* (98), *Postia placenta* (99), and several species of the order Polyporales (100), and many more can be expected to be identified from whole-genome sequence data. For



example, up to 29 Ste3-like receptors were identified in the genome of *Serpula lacrymans* (Fig. 2). A few theoretical possibilities have been proposed for their function (41). One such possibility considers that they may play a role during monokaryotic fruiting, in a way similar to that described for the *C. neoformans* non-mating-type receptor gene *CPR2*, whose overexpression elicits homothallic reproduction (101). Another hypothesis suggests that these genes may function in vegetative communication within a species or in conspecific recognition avoiding hybridization (41). Experimental studies addressing the function of these non-mating-type-specific receptors are thus critically needed.

Comparative genomics revealed that gene content and organization (synteny) are generally conserved around the *HD* locus in Agaricomycetes. Two genes usually border this locus: one encodes a mitochondrial intermediate peptidase (*MIP*), which has served as a valuable marker for the isolation of *HD* loci from nonmodel species, and the other is known as a beta-flanking gene (*-fg*) for an unknown protein (Fig. 3A) (94, 100, 102). Although this configuration is found in most species analyzed, exceptions have been reported. In *S. commune*, for example, two large rearrangements at the *HD* locus have taken place causing the separation of the *HD* locus into two clearly distinct subloci that now lie more than 500 kb apart and frequently recombine during meiosis (Fig. 3A) (103, 104). A similar situation is observed in *Flammulina velutipes* (winter mushroom or enoki), but the distance between the two *HD* subloci is about 70 kb. Interestingly, whereas synteny analysis of the surrounding regions indicates that the separation of the two *HD* subloci in *S. commune* emerged via transposition of the two gene clusters, the extant arrangement in *F. velutipes* was driven by two large inversions (95). Other exceptions to the typical *MIP-HD1/HD2--fg* gene arrangement were ob-

served in the cacao pathogen *Moniliophthora roreri*, where both *MIP* and *-fg* are located 40 and 60 kb upstream of *HD1/HD2* (105), respectively, and in the Shiitake mushroom, *Lentinula edodes*, where *MIP* is distant from the *HD* locus (106). Gene order conservation at the *P/R* locus is also observed among Agaricomycetes, although to a lesser extent compared to the *HD* locus. The *P/R* locus in *L. bicolor* was shown to be in a chromosomal region more prone to gene duplication, translocations, and accumulation of transposable elements (98), and in the wood-decay basidiomycete *Botryobasidium botryosum* (order Cantharellales; Fig. 2), genome inspection revealed the presence of transposons in the immediate vicinity of pheromone and receptor genes (Fig. 3A; this report). Another illustrative example is the position of *STE20* and *STE12* genes, which varies among the species shown in Fig. 3A.

Tetrapolarity with multiple alleles at both *MAT* loci is often suggested to promote outcrossing (107, 108). It is true that tetrapolarity is less favorable to selfing than to outcrossing, because the chances that any two haploid siblings from the same diploid parent are compatible is at most 25% for tetrapolarity, compared to 50% from a bipolar cross (107). However, tetrapolarity also yields only 25% compatibility under outcrossing when both mating-type genes are biallelic, so that tetrapolarity in itself does not favor outcrossing compared to selfing under biallelism. It is multiallelism that may restrict inbreeding, however, and the evolution of high numbers of mating types is suspected to be primarily driven by selection for increased compatibility at syngamy under an already established outcrossing mating system. An evolutionary scenario could be one with ancestral mating-type determinism being biallelic at the *HD* locus and where the high level of gamete dispersal evolves, leading to widespread outcrossing, which in turn selects for rare alleles, yielding multiallelism at the

Figure 4 Phylogeny of Basidiomycota pheromone receptor proteins. Amino acid sequences identified by BLAST from publicly available databases or from genome projects were retrieved for representative species of the tree subphyla of the Basidiomycota. A total of 106 sequences were manually inspected, amended where necessary, and aligned with MAFFT (195), and poorly aligned regions were trimmed with trimAl (196). The phylogenetic tree and branch support were obtained as in Fig. 2, and the tree was rooted with *S. cerevisiae* Ste3p. GenBank accession numbers (*), Joint Genome Institute protein identifiers (**), and RIKEN/NBRP identifiers (***) are given after the strain name, with letters in superscript indicating (a) genomes assembled from available raw sequencing data and inspected locally, (b) genomic contigs/scaffolds lacking gene annotation, and (c) genes whose annotation was corrected. Species highlighted in boldface are shown in Fig. 3, with arrows before their names indicating the allelic version (or paralog) of the pheromone receptor as colored in Fig. 3. Of note, the *STE3.1* and *STE3.2* alleles in the Microbotryomycetes (Pucciniomycotina) displayed the deepest allelic divergence and trans-specific polymorphism, with the *STE3.1* alleles of the different species branching together rather than each of these alleles clustering with the *STE3.2* allele from the same species (42, 45, 137).

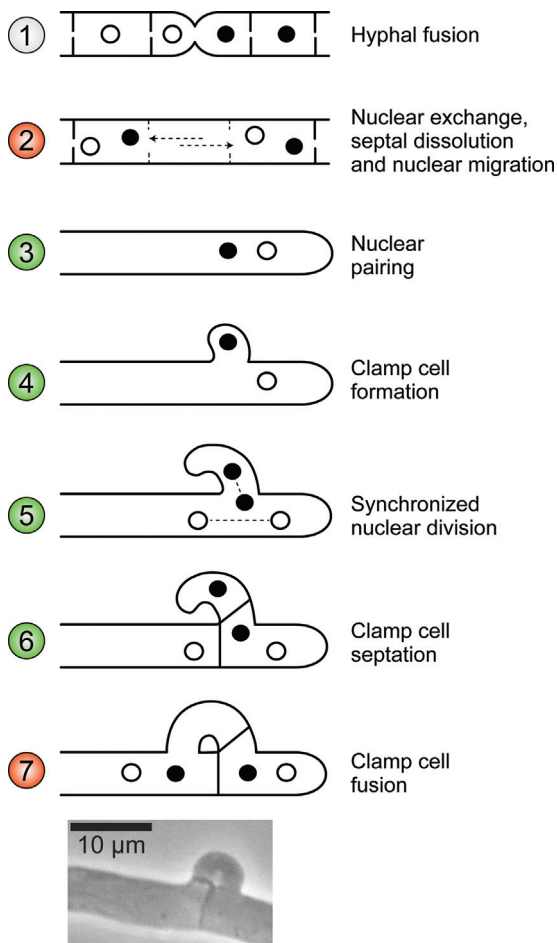


Figure 5 Roles of *P/R* and *HD* genes on the formation and maintenance of the dikaryon in *C. cinerea*. Pheromone signaling is not required to attract mates, and hyphal fusion is mating-type independent (diagram 1). Upon fusion, nuclei enter the mycelium of the other mate and migrate until they reach a hyphal tip cell (diagram 2). During hyphal tip elongation, the two types of haploid nuclei (depicted in white and black, representing different *MAT* genotypes) pair at the tip cell (diagram 3), and at the place where mitosis will take place, a hook-like structure (called a clamp connection) is formed (diagram 4). The two nuclei divide synchronously: one of the nuclei divides in the direction of the clamp cell that is growing backward toward the main hyphae, while the other divides along the main hyphal axis (diagram 5). Septa are generated between the dividing nuclei. This way one nucleus stays temporarily entrapped in the clamp cell, one nucleus of the other type is enclosed in the newly formed subapical cell, and a nucleus of each type is maintained in the emerging hyphal tip cell (diagram 6). The clamp cell fuses with the subapical cell and releases the entrapped nucleus from the clamp cell, restoring the dikaryotic state of the subapical cell (diagram 7). In *C. cinerea*, steps controlled by *P/R* (diagrams 2 and 7) and *HD* (diagrams 3 to 6) genes are colored red and green, respectively. See Casselton et al. (18) and Kües (90) for details. The micrograph at the bottom was obtained from Stajich et al. (86), with permission.

HD locus. Recruiting a biallelic *P/R* locus in mating-type determinism would not favor outcrossing, because again, compatibility odds will be similar under outcrossing compared to selfing. Different scenarios for explaining the incorporation of the *P/R* locus in the mating-type determinism system are possible, such as its role in syngamy or mate attraction, or again, evolution first of multiallelism (e.g., due to population differentiation). Studies addressing the pattern of mating in nature, depending on gamete dispersal rates and polymorphism levels at the mating-type genes, will be fundamental to test some of these predictions.

Bipolar Breeding Systems: Genomic Changes and Evolutionary Considerations

Early studies indicated that, although the tetrapolar mating system predominates in the Basidiomycota, a considerable number of species are bipolar. For example, roughly a quarter of the mushroom species are bipolar (1, 13) and, significantly, they occur phylogenetically interspersed with tetrapolar relatives (100). Owing to the occurrence of multiple bipolar species within the basidiomycetes, the origin of tetrapolarity as the ancestral state to this clade is still debatable. However, several lines of evidence argue strongly in favor of this hypothesis. First, the tetrapolar system is architecturally complex, making it unlikely to have arisen multiple times (23, 109). Second, the same mating-type-determining genes (at both *P/R* and *HD* loci) are involved in mating-type determinism in species of the three major basidiomycete lineages, suggesting a common origin (41, 42, 108). Third, all bipolar species investigated so far display genomic signatures, suggesting that they derived secondarily from a tetrapolar system (detailed below). Based on these observations, the prevailing hypothesis is that the tetrapolar system evolved in a basidiomycete ancestor following the acquisition of a separate locus (the *P/R* locus) for *MAT* determination that segregated independently of the *HD* locus, and with multiallelism evolving in many lineages (17, 41).

As initially envisaged by John Raper (1), and more recently supported by solid molecular evidence (detailed below), bipolarity in the Basidiomycota appears to be the result of simple genetic changes. There are two general ways this can be achieved: (i) by linkage of the *P/R* and *HD* loci into a single, nonrecombining *MAT* region with often only two alleles of each locus being retained or (ii) by loss of function of the *P/R* locus in mating-type specificity, conceivably through mutations that cause constitutive expression of the *P/R*-regulated pathway or that produce a self-compatible allele at the *P/R* locus.

Transition to bipolarity in smuts and *Malassezia* through linkage of *P/R* and *HD* loci

There are now several direct examples that support the formation of a bipolar system through a chromosomal translocation that places both *P/R* and *HD* loci in tight linkage. In the Ustilaginomycotina, a prime example is provided by *Ustilago hordei*, a bipolar smut pathogen closely related to tetrapolar *U. maydis* (Fig. 2) (110). With the molecular analysis of the *MAT* loci, initially in *U. maydis* (26, 59, 111, 112), the genomic basis of the bipolar mating behavior of *U. hordei* was subsequently revealed: both *P/R* and *HD* complexes were physically linked on the same chromosome, 430 and 500 kb apart on the largest chromosome representing the respective *MAT-2* and *MAT-1* loci (Fig. 3B), and the presence of inversions in between these complexes was proposed to cause the almost complete lack of recombination of the complexes (113–115), likely resulting in a subsequent accumulation of transposable elements. Detailed analyses have since then been published on mating types in several Ustilaginomycotina spp.

Complete genomes of five species of closely related genera varying in mating-type organization are available: tetrapolar *U. maydis* (116) and *S. reilianum* (117) and the bipolar species *U. hordei*, with the *HD* and *P/R* loci 430 to 500 kb apart (118), *Sporisorium scitamineum*, with the *HD* and *P/R* loci 59 kb apart (119, 120) (Fig. 3B), and *Ustilago bromivora*, with the *HD* and *P/R* loci 183 kb apart (121). Based on comparison of chromosomal rearrangements between *U. maydis*, *U. hordei*, and *S. reilianum*, it was suggested that the tetrapolar organization in the *S. reilianum* lineage was ancestral and that part of *S. reilianum* chromosome 1 harboring the *HD* locus was translocated to its chromosome 20 harboring the *P/R* locus, to generate the bipolar organization in *U. hordei* (118). This potential scenario was strengthened in the recently published bipolar *S. scitamineum* genome: homologous parts of *S. reilianum* chromosomes 1 and 2 seem rearranged to give chromosome 2 in *S. scitamineum* (120). In all these cases, the presence of many repetitive and transposable elements at the breakpoints suggested they may be functionally involved (122). As stated above, the resulting spacing between the *HD* and *P/R* loci in these species varied between 59 and 500 kb, and this was likely a consequence of increasing numbers of such elements due to decreased recombination.

A similar *MAT* loci configuration has also been recently identified in the human skin commensal yeast *Malassezia* spp. complex that is responsible for dandruff and other skin pathologies. These include *Malassezia*

sympodialis, *Malassezia globosa*, and *Malassezia yamatoensis* (123, 124) (Fig. 2). Similar to *U. hordei*, the *P/R* and *HD* loci in these three *Malassezia* spp. are also located on the same chromosome and are separated by large chromosomal regions that are >100 kb in size. Interestingly, comparison of the chromosomal regions encompassing the *P/R* and *HD* loci in these species also suggests that the linkage between the two *MAT* loci are the result of two independent events, with one giving rise to the linkage between the two *MAT* loci in *M. sympodialis* and *M. globosa*, while the other rearrangement led to the *P/R* and *HD* linkage in *M. yamatoensis*. Additionally, analyses of natural isolates of *M. sympodialis* suggest that recombination is still occurring between the *P/R* and *HD* loci in natural populations, indicating that linkage between the two *MAT* loci is not tight. In agreement with this, the 170-kb *MAT* region of *M. globosa* does not contain accumulations of repetitive elements as found at the *MAT-1* locus of *U. hordei* (125), as is expected in regions of suppressed recombination. Moreover, a preliminary examination of the *P/R*-containing region in the genomes of two *M. sympodialis* strains of opposite mating types revealed conserved gene order in the immediate vicinities of the *P/R* gene pair, which are found adjacent but inverted in both mating types (Fig. 3B; this report). The breeding system in *Malassezia* species is thus considered “pseudo-bipolar,” a term initially proposed for the breeding system of the red-pigmented yeast *S. salmonicolor* to reflect a situation where multiallelism might occur despite the apparent loose linkage of the two *MAT* regions (45); linkage is expected to be selected for in selfing mating systems, in which rare alleles have no advantage, leading to gradual loss of alleles but two by genetic drift.

Bipolarity in pathogenic *Cryptococcus* spp. complex and in *Trichosporon*

Outside the Ustilaginomycotina, deviations from the classic tetrapolar system have also been observed in a variety of species. For example, all the species within the human pathogenic *Cryptococcus* spp. complex (Tremellomycetes, Agaricomycotina; Fig 2) (126) have bipolar mating systems. In these species, there are two mating types, *MAT* α and *MAT* β , defined by two alleles (α and β) at a single large *MAT* locus (Fig. 3A). The *MAT* locus in pathogenic *Cryptococcus* spp. is ~120 kb in size and contains about 20 genes, including those encoding mating pheromones and their cognate receptors and homeodomain transcription factors (*HD1* or *SX11* and *HD2* or *SX12*). There is, however, a distinctive feature regarding the normally two-gene homeo-

domain function in this group of species: the *HD1* (or *SXI1*) gene is unique to *MAT α* strains, whereas *HD2* (or *SXI2*) is specific to the *MATa* strains (Fig. 3A). This is in contrast to other basidiomycetes in which a divergently transcribed *HD1/HD2* gene pair is present in each mating type.

Accordingly, each mating type in pathogenic *Cryptococcus* spp. has been reduced to the minimal number of *HD* genes required to function upon fusion of compatible cells (127). Recessive losses of genes from one mating type could likely occur because each is sheltered in a permanent hemizygous state due to recombination suppression within the *MAT* locus, associated with extensive chromosomal rearrangements. However, gene conversion does occur within these regions and at a frequency that is at least comparable to the crossover frequencies in other chromosomal regions (71). Additionally, it has been shown that recombination hotspots associated with the presence of GC-rich motifs are located at the regions that flank the *MAT* locus in *Cryptococcus* (128, 129), which could potentially function as repressors of crossover within the *MAT* locus. Comparison of the *MAT* loci of closely related tetrapolar species such as *C. amyloletus* (71) and *Cryptococcus heveanensis* (70) suggests that the single *MAT* locus in the pathogenic *Cryptococcus* spp. is the result of fusion of ancestral *P/R* and *HD* loci, possibly mediated by repetitive sequences and transposable elements that may act as substrates for nonhomologous recombination (130, 131).

A recent genomic study found that in the oil-accumulating yeast *Trichosporon oleaginosus* (recently renamed *Cutaneotrichosporon oleaginosus*) (Fig. 2 and Fig. 3A), as well as in some of its sister species, the mating-type regions show significant structural differences from those of other Tremellomycetes that possess tetrapolar breeding systems. Specifically, no homologs of the *HD2* transcription factor could be identified in the genomes of *T. oleaginosus* and *Trichosporon asahii*, suggesting that this transcription factor might have been lost during the evolution of the *Trichosporon* spp. complex (132). Alternatively, this gene is absent from only one mating type like the situation in the *Cryptococcus* spp. complex, a possibility which cannot be ruled out since the three sequenced strains carried the same alleles of *P/R* and *HD* genes. However, if the latter hypothesis ends up being true, then such gene loss would represent a case of parallel evolution in *Trichosporon* and the human pathogenic *Cryptococcus* spp. complex given that the last common ancestor of the two lineages most likely contained the standard *HD1/HD2* gene arrangement. It would be of interest

in this scenario to test whether the *HD* gene loss is associated with established genetic linkage between the genomic regions that contain the *P/R* and *HD* genes (Fig. 3A). Unfortunately, the fragmented nature of the available genome assembly of *T. oleaginosus* (132) and the lack of descriptions of a sexual cycle for any *Trichosporon* species prevent a more definitive answer at this time.

Expansion of the mating-type locus in *Microbotryum* following linkage of *P/R* and *HD* loci

The findings in the aforementioned bipolar species support the hypothesis of a tendency toward expansion of the regions of recombination suppression in mating-type regions in fungi (133), although it is not yet clear what underlying factors have been driving this trend, e.g., whether it is simply the linkage of the two mating-type loci. In line with this, a more extreme case of the evolution of bipolarity from tetrapolarity by linkage between the two *MAT* loci is observed in the anther-smut fungus *Microbotryum lychnidis-dioicae*. All species belonging to the genus *Microbotryum* are castrating floral smut pathogens that parasitize plants in the Caryophyllaceae family (Fig. 1B), forming a complex of sibling species highly specialized on different plant species (61, 134, 135). The most studied species is *M. lychnidis-dioicae*, which parasitizes *Silene latifolia* (136). This fungal species is bipolar, with only one *MAT* locus and two alleles, called *a*₁ and *a*₂ (137). This is among the first fungal species for which bipolar mating types have been described (138) and also the first fungal species for which size-dimorphic mating-type chromosomes were revealed (139). A sex event is required before each new plant infection, and *M. lychnidis-dioicae* displays a highly selfing mating system under heterothallism, performing mostly intra-tetrad mating (a.k.a. automixis) (140–142). The populations are therefore highly homozygous throughout much of the genome (143, 144).

A recent high-quality assembly of the genome of *M. lychnidis-dioicae* has revealed that bipolarity and mating-type chromosome dimorphism are due to the linkage of the *P/R* and *HD* loci in a very large region of suppressed recombination (145, 146). The centromere is also located in the nonrecombining region (145), which leads to the segregation of mating types in the first meiotic division. The mating-type chromosomes of *M. lychnidis-dioicae* thus do not recombine across 90% of their lengths (*a*₁, 3.5 mega-base pairs [Mbp]; *a*₂, 4.0 Mbp), with only small pseudo-autosomal regions at both edges that recombine. The nonrecombining

region is highly rearranged, with at least 210 inversion events. As expected due to the less efficient selection in genomic regions without recombination (147), the cessation of recombination has led to genomic degeneration, with accumulation of transposable elements, non-synonymous substitutions, biased gene expression, and the hemizygous loss of hundreds of genes (145, 148).

Most other anther-smut fungi are bipolar with dimorphic mating-type chromosomes that also show degeneration (148); one clade has recently been found to have a tetrapolar breeding system: in particular, *Microbotryum saponariae* and *Microbotryum lagerheimii*, which parasitize, respectively, *Saponaria officinalis* and *Silene vulgaris* (73). In these closely related species, the two *MAT* loci segregate independently, being located on different chromosomes, but are linked to their respective centromeres (73). This situation may have resulted from a reversion from bipolarity to tetrapolarity or from the independent evolution of the linkage of *MAT* loci under automixis in the other lineages. Indeed, both bipolarity with linkage to the centromere, as in *M. lychnidis-dioicae*, and linkage of both *MAT* loci to their respective centromeres on different chromosomes, as in *M. saponariae*, are equally favorable under automixis in anther-smut fungi (73, 145).

Transition to bipolarity through loss of function of the *P/R* genes in mating-type determination

It is not surprising that changes in the configuration of the *MAT* loci can alter the mating behavior of individuals, sometimes resulting in transitions between different breeding systems. For example, in tetrapolar heterothallic species, the *HD* locus encodes genes that heterodimerize during mating to form active transcription regulators, ensuring the proper development following syngamy. However, the heterodimer can only form between *HD1* and *HD2* proteins derived from different alleles. Thus, if recombination occurs between the *HD1* and *HD2* genes resulting in bringing together compatible *HD1* and *HD2* alleles on the same chromosome, a haploid individual bearing this novel *HD* genotype pair would transition from compatibility determined by two sequential compatibility checkpoints (*P/R* and *HD*) to a single mechanism (*P/R*) inherited in a bipolar manner. This newly formed *HD* allele could also be the first step in a transition from heterothallism to homothallism provided that compatible pheromones and receptors are brought together at the *P/R* locus in a subsequent event. Examples of these types of transition have been reported in *C. cinerea*, where fusion of the *HD1* and *HD2* genes from different subunits results in

self-compatibility and constitutive sexual development (149). Alternatively, mutations in a pheromone receptor gene in *C. cinerea* resulted in a receptor that was either constitutively activated (150) or that responded erroneously to a normally incompatible pheromone encoded within the same allele (151), removing its function in mating-type determination.

Studies of several other Agaricomycetes, including *Coprinellus disseminatus* (152), *Pholiota microspora* (153, 154), *P. chrysosporium* (94), and *Heterobasidion irregulare* (155), have shown that a transition from a tetrapolar to a bipolar breeding system was indeed due to the uncoupling of the *P/R* from mating-type-determining functions. These bipolar species retained nonetheless a multiallelic *HD* locus, with the number of alleles defining the number of mating types (e.g., ~123 mating types are estimated for *C. disseminatus*) (16, 152). Therefore, a new mating type will arise as soon as a novel *HD* allele is generated. However, evolving novel *HD* alleles that are still able to heterodimerize with extant alleles, while restricting self-activation, will become increasingly challenging (156). Compared to tetrapolar multiallelic species such as *C. cinerea* and *S. commune*, and assuming that *HD* alleles are found at equal frequency in the population, the probability of randomly chosen individuals being compatible in an outcrossing event is theoretically greater in bipolar multiallelic species: only a single locus needs to be compatible, rather than two in the tetrapolar situation (16). Furthermore, considering that mating in mushroom-forming fungi is preceded by basidiospore (meiospore) dispersal, outcrossing rather than selfing is more likely to occur (16, 61). Therefore, and because mating-type compatibility is not discriminated prior to syngamy, the costs of landing on an incompatible mate are in this case very high. It can thus be easily envisaged that mutations at the *P/R* locus causing loss of function in mating-type determination may have been selected for, in some circumstances, because the chance of compatibility would be greatly increased, and there is no selective pressure anymore to restrict inbreeding, which is already avoided by gamete dispersal.

Homothallism in the Basidiomycota

In some fungal species, haploid cells are universally compatible for mating, including among clonemates (a.k.a. intrahaploid mating, same-clone mating, or haploid selfing) (15, 79, 156). We call these species homothallic, and several proximal mechanisms have been proposed to account for such mating behavior: (i) the presence of compatible sets of *MAT* genes, either fused or unlinked, in one haploid genome (primary homothal-

lism), (ii) mating-type switching (either bidirectional or unidirectional), and (iii) the lack of any gene-based mating-type discrimination (also known as the ability for unisexual reproduction or same-sex mating) (reviewed in 157, 158). Some other fungal species, referred to as pseudohomothallic, also have the ability to complete the sexual cycle without the apparent need for syngamy (159–161). However, pseudohomothallism is achieved by packaging two nuclei of compatible mating types derived from the same meiosis into a single spore. This process is thus more similar to diploid selfing via automixis or intratetrad mating and has different genetic consequences compared to intrahaploid mating (79, 162).

Homothallism is present in three main fungal lineages (the phyla Mucoromycota, Ascomycota, and Basidiomycota), indicating that this form of sexual behavior may provide a selective advantage under certain conditions, for instance, by promoting universal compatibility (79, 162). Compared to other phyla, however, homothallic basidiomycete species are less common. Whether this relates to the complex genetic underpinnings of the mating system in this phylum, as described above, or is because they can more easily evolve multiple alleles, allowing high frequencies of mating compatibility, is still an unresolved matter. Primary homothallism has been proposed for a handful of species in the Basidiomycota, most notably *Sistotrema brinkmannii* (163), in which homothallic and bipolar heterothallic individuals are found in the same population, and for the cacao pathogen *Moniliophthora perniciosa* (164). A partial genome sequence is only available for the latter species, which upon examination revealed various genes for putative pheromones and receptors and one or possibly two *HD1* genes (165), but their genomic organization as well as their function during the sexual cycle remain undetermined. We present below details of two basidiomycete species for which there has been progress in understanding the genetic basis of homothallism.

Homothallic breeding system of *Phaffia rhodozyma*

Recently, inspection of the genomes of three strains of the homothallic yeast *P. rhodozyma*, belonging to the order Cystofilobasidiales (Fig. 2) (166), revealed the presence of pheromone precursor and receptor genes organized in two gene clusters, located ~5 kb apart. Each cluster was composed of one pheromone and one pheromone receptor gene (either *MFA1/STE3-1* or *MFA2/STE3-2*; Fig. 3A) (167). In contrast, a single *HD1/HD2* gene pair was found in the genome that was not linked to the *P/R* locus (Fig. 2) (167). In elucidating

the molecular interactions involved in mating compatibility in *P. rhodozyma*, David-Palma et al. (168) pursued targeted gene replacement of the *MAT* genes and genetic crosses using single, double, and triple mutants (168). They determined that both *P/R* gene clusters produced intercompatible gene products, enabling self-signaling, and each pheromone only interacted with the receptor of the other cluster (i.e., *Mfa1* activates *Ste3-2* and *Mfa2* activates *Ste3-1*; Fig. 3A). Additionally, the single pair of *HD1* and *HD2* homeodomain proteins was also shown to be required and apparently cooperated for normal completion of the sexual cycle (168).

Even though the genetic makeup of *MAT* loci in *P. rhodozyma* is suggestive of primary homothallism, David-Palma et al. (168) pointed out why this configuration departs in several aspects from what would be expected from simply gathering in a haploid genome the intercompatible alleles of *MAT* genes. First, although the two pheromone receptor genes exhibited considerable sequence similarity (~50% amino acid identity), phylogenetic analyses indicated that they were more closely related to each other than to receptor genes in other species, and both seemed to derive from the *MAT α /A1*-related allele lineage (Fig. 4). This indicates that the two pheromone receptor genes in *Phaffia* have diverged much more recently than in most basidiomycetes (possibly coalescing within the genus) (M. David-Palma, personal communication), and the extant arrangement may be the result of fusion of two mating-type variants. The second aspect concerns the *HD* genes, in that only one *HD1/HD2* pair is present, but both proteins are required for sexual development. Based on evidence of a very weak interaction between the two *HD* proteins in a yeast two-hybrid assay (168), it was proposed that at the generation of a compatible *HD1/HD2* pair within the haploid genome there would need to be one or more mutations relaxing the structural hindrance that normally prevents interactions between *HD* proteins encoded by the same locus in heterothallic species (168). Similar investigations are currently under way in other species of the Cystofilobasidiales to reconstruct the evolutionary transitions in breeding systems in this lineage (M. David-Palma, personal communication).

Homothallism in *C. neoformans*

While most homothallic species can initiate sexual reproduction through fusion with any other haploid cell, including clonemates, they do so through the presence of two intercompatible mating alleles within a haploid genome. In the human pathogenic fungus *C. neoformans*, the proximal mechanism for homothallism is

different because it concerns haploid cells with a single mating-type allele in their genome (169). Specifically, while *C. neoformans* has a bipolar breeding system in which mating typically occurs between *MATa* and *MAT α* cells, it has been found that, in response to nutrient limitation, *MAT α* cells can also complete the sexual cycle in the absence of *MATa* cells (169). The α - α diploid state can be established through either (i) cellular and nuclear fusion of two clonemates, (ii) nuclear fusion between mother and daughter nuclei, (iii) endoreplication of the entire genome of a single cell resulting in a diploid nucleus, or (iv) fusion of cells of the same mating type but of different genetic lineages (169). While the first three pathways represent different ways to achieve same-clone mating (haploid selfing), the latter enables outcrossing and thus the possibility to admix genetic diversity despite identical cell-type identity of the mating partners. In all cases, the resulting diploid cell undergoes monokaryotic filamentation and subsequent basidium formation, where meiosis takes place to produce the haploid spores as in the heterothallic mating cycle (Fig. 1C).

Importantly, recent studies using this model basidiomycete have shown that α - α mating between genetically identical cells can generate phenotypic and genotypic diversity *de novo*, including single-nucleotide polymorphisms (less frequently), chromosomal translocations, and aneuploidy (more frequently) which, although usually likely deleterious, may rarely provide a beneficial novelty (170). Moreover, crossovers have also been detected within the *MAT* locus during meiosis of genotypes resulting from α - α mating (129), presumably because the two *MAT α* alleles are colinear, unlike a - α combinations (130). It should be pointed out that among the *C. neoformans* natural isolates, the vast majority (up to >99%) are of the α mating type (171). Thus, α - α mating could be beneficial when a compatible mating partner for a heterothallic cross is hard to find in nature. In turn, it is also possible that α - α mating played a role in generating the highly imbalanced mating-type ratio observed among natural isolates. Recently, this type of homothallism determinism has also been identified in the human pathogen *Candida albicans* (172, 173) as well as in the tree wound-infecting fungus *Huntia moniliformis* (174), suggesting that it could be more prevalent among fungal species than is currently appreciated.

Evolutionary considerations on the costs of homothallism

Although it has been traditionally accepted among mycologists that homothallism evolved to promote same-

clone mating (170, 175), it is important to point out that the potential for same-clone mating of a species as assessed in a laboratory setting does not imply that this is the prevalent mating system of the species in nature. Moreover, the sexual cycle involving clonemates does not result in actual recombination, the supposedly main advantage of sexual reproduction (176), while still incurring some costs (e.g., slower reproduction and maintenance of the meiotic machinery). Same-clone mating is less efficient at purging deleterious mutations: homologous chromosomes carrying different deleterious mutations that occurred in a given large clonal lineage can of course be recombined and produce a chromosome free of deleterious mutations (177), but this constitutes more outcrossing (i.e., mating between two different genotypes) than same-clone mating *per se*. Besides, in a population undergoing only same-clone mating, different deleterious mutations that are fixed by genetic drift in distinct clonal lineages cannot be eliminated from the populations, and Muller's ratchet will inexorably lower population fitness (133). Furthermore, same-clone mating cannot bring together different beneficial mutations that evolved in distinct clonal lineages (Hill-Robertson interference). A transition to asexuality would bypass some of the costs of sex while producing haploid progeny that are genetically the same as the participants in same-clone mating.

Homothallism has been suggested instead to have evolved due to the selective advantage of increasing the number of available mates, because it can be seen as a universal compatibility (15, 79). The frequency of outcrossing in homothallic species under experimental conditions of mate choice has rarely been explored, but outcrossing has still been shown to occur in some homothallic fungi (178, 179). Homothallism would therefore be advantageous through universal compatibility under outcrossing. However, given that same-clone mating incurs costs of sex without some of the major benefits of recombination, heterothallism may be favored by selection for increasing the chance to produce recombinant offspring when there is limited haploid dispersal (15, 79). Nevertheless, same-clone mating may allow a benefit from indirect advantages of the sexual cycle without breaking apart beneficial allelic combinations (180, 181). Such advantages include the production of resistant sexual spores as a life history constraint, changes in ploidy level and physiology, virus elimination, and genome defenses that depend on the sexual cycle, such as repeat-induced point mutation (182) or meiotic silencing of unpaired DNA (183). Recent studies also showed that same-clone mating can generate *de novo* mutations and new beneficial phenotypes (170).

New Genome Sequencing Projects: What Can They Tell Us about MAT Gene Structure and Evolution?

With the exponential growth of data resulting from several large-scale genomics initiatives, such as the 1000 Fungal Genomes Project at the Joint Genome Institute (184) and the Fungal Genome Initiative at the Broad Institute (185), it is now possible to identify and compare the genomic organization of *MAT* genes across many fungal species. For example, genome surveys allowed the detection of *P/R* and *HD* genes in important plant pathogens with complex life cycles, such as the rust fungi (Pucciniales, Pucciniomycotina; Fig. 3B) (40, 186). Indeed, because many rust species are macrocyclic (i.e., completing their sexual stage on a different and sometimes obscure or unknown alternative host plant) and sometimes unculturable, sexual compatibility has been very difficult to study. Some reports have shed light on possible breeding systems: several *Puccinia* and *Uromyces* spp. may have a simple bipolar system (187), whereas a more complicated tetrapolar system with multiple allelic specificities may be present in *Melampsora lini* (188) and the related oat crown rust pathogen, *Puccinia coronata* (189). Whether these and other species have bi- or multiallelic *MAT* loci remains unknown, but new insight is now arising from different fungal genome sequencing initiatives.

In a recent study, several new wheat rust *Puccinia* spp. genomes were analyzed for the presence of mating-type genes (186). In three cereal-infecting rust fungi (*Puccinia triticina* [Pt], *Puccinia graminis* f.sp. *tritici*, and *Puccinia striiformis* f.sp. *tritici*), one divergently transcribed *HD1/HD2* gene pair was found, reminiscent of the organization in other basidiomycetes; two alleles of each were present in the dikaryotic urediniospores, which is the cell type produced upon mating. Preliminary analyses of multiple genome sequences allude to the presence of more than two alleles in nature (G. B., unpublished). Three homologs for the pheromone receptor (*Ste3*) were identified in the dikaryotic urediniospores. Phylogenetic analysis, comparing *Ste3* proteins from various rusts and other basidiomycetes, revealed that one *STE3* gene (*PtSTE3.2-1*) was present in two allelic forms, whereas the other two (*PtSTE3.2-2* and *PtSTE3.2-3*) likely represented the two mating specificities, one in each haplotype genome (186) (Fig. 3B and Fig. 4). This was substantiated by revealing many more single-nucleotide polymorphisms in *STE3.2-1* homologs in *P. triticina*, *P. graminis* f.sp. *tritici*, and *P. striiformis* f.sp. *tritici* among several sequenced genomes; the conclusion, also based on differential expression in various life cycle stages, is that this gene may represent

a novel function (186), suggesting that *MAT* pathway components may be repurposed. In further support, a pheromone precursor gene (*PtMFA2*) was identified 650 bp from *PtSTE3.2-2*, divergently transcribed as found, e.g., in the *P/R a2* locus of *U. maydis*. However, the current rather fragmented *Puccinia* genomes did not allow for further conclusions about the possible physical linkage of the *HD* and *P/R* gene complexes to constitute a bipolar arrangement, but based on the current assembly and some mapping data in *P. triticina*, these loci are at least 216 kb apart (186). Current developments of single-molecule sequencing by Pacific Biosciences, focusing on generating very long kb-sized reads, are expected to improve these genome assemblies in the near future.

CONCLUSIONS

The basidiomycete fungi have been found to undertake nearly every permutation of reproductive compatibility mechanisms, and the recent literature reviewed here illustrates that the high diversity at mating compatibility loci has remained for several decades “the most challenging problem in the control of [their] sexuality” (190). The advent of inexpensive molecular tools now provides access to genetic information in a broader range of nonmodel species, including at the population-genomic level, so that more comprehensive databases are being assembled. Such surveys shed light on the generalities of what *does* happen in nature, beyond our glimpses and speculations into what *can* happen in exceptional cases (vis-à-vis reference 191). Just as importantly, the large-scale comparative approaches that derive from improved resolution of phylogenomic techniques (192) may provide new understanding of the ecological and evolutionary forces responsible for transitions in breeding systems and underlying genetic determinants. Fungi thus provide rich opportunities for the match of tractable study systems with questions pertaining to sexual life histories as a defining characteristic retained among diverse eukaryotic lineages.

GLOSSARY OF TERMS

Anisogamy: Situation in a species with two classes of gamete sizes—one class of large gametes (female function) and one class of small gametes (male function); a single genotype can produce both types of gametes in most anisogamous fungi, so that there are no different sexes.

- Automixis:** A form of diploid selfing resulting from the fusion among products of a single meiosis (i.e., intratetrad mating).
- Bipolarity:** Breeding system with a single locus controlling mating type; it is often associated with only two alleles in fungi.
- Breeding system:** Mechanism determining reproductive compatibility, i.e., with no mating type (homothallism) or mating types determined by one locus (bipolar) or with two independent loci (tetrapolar); it is important to distinguish the breeding system from the mating system, because, even if they likely coevolved, the understanding of their relationships and their evolutionary implications can only be precisely achieved by recognizing that they refer to different concepts (15, 17).
- Clonemates:** Cells with identical genotypes resulting from clonal division of a mother cell.
- Diploid selfing:** Mating among meiotic products from a single diploid individual.
- Haploid selfing** (or same-clone mating, intrahaploid mating): Mating among haploid clonemates.
- Heterothallism:** Situation in which a given haploid genotype can only mate with another haploid genotype carrying a different allele at the mating-type locus (loci). It is important to distinguish the terms “heterothallism” and “self-sterility,” the latter usually being used to refer to the inability of diploid selfing rather than haploid selfing in the scientific literature, which have very different evolutionary consequences. Even in fungi, many heterothallic species can undergo selfing (e.g., *Microbotryum* anther smuts; Fig. 1).
- Hill-Robertson interference** (named after the two scientists who first proposed the concept): A phenomenon referring to less efficient selection because of linkage disequilibria (generated either by drift or in a clonal population); for example, in the case of beneficial mutations appearing in different individuals at two different genes in linkage disequilibrium, selection can only fix one of the two.
- Homeodomain protein:** Protein that harbors a characteristic approximately 60-amino acid helical protein-folding structure, highly conserved among eukaryotes, that binds DNA at so-called conserved homeobox sequences of about 180 bp and often regulates transcription of other sets of genes; in basidiomycetes, these transcription factors control a set of genes involved in the mating process, including morphological changes. The term “homeo” refers to the term “homeosis designing,” the replacement of a body part by another body part in animals, as can occur when transcription factors are affected by mutations.
- Homothallism:** Situation in which a haploid genotype can mate with any other haploid genotype in the population, including its clonemates; homothallism is typically assessed by the ability of a haploid genotype to produce sexual structures alone in a petri dish; however, it is important to recognize that it does not inform on the mating system actually occurring in natural populations. It is also important to distinguish the terms “homothallism” and “self-fertility,” the latter usually being used in the scientific literature to refer to the ability of diploid selfing rather than haploid selfing, which have very different evolutionary consequences. Using “self-fertility” for “homothallism” can only lead to confusion in the actual phenomenon that is referred to and therefore in the understanding of concepts and evolution and breeding and mating systems.
- Inbreeding:** Mating occurring among related individuals.
- Isogamy:** Situation in a species in which all gametes have similar sizes.
- Karyogamy:** Fusion of haploid nuclei following mating.
- Mating system:** The pairing of mating participants in nature, considering their genetic relatedness, i.e., outcrossing versus inbreeding or selfing (and either haploid or diploid selfing).
- Mating types:** Different types of individuals or gametes in the population, with gametes of similar sizes, but mating compatibility being usually determined by the exchange of molecular signals and being possible only between different mating types. It is important to distinguish sexes from mating types because the evolutionary causes of their evolution and their evolutionary consequences are very different (15).
- Muller’s ratchet** (proposed by Hermann Joseph Muller): A process in which the chromosomes of asexual populations accumulate inexorably deleterious mutations where the lack of recombination prevents regenerating chromosomes free of deleterious mutation from two homologous chromosomes carrying different deleterious mutations.
- Outcrossing:** Mating among different genotypes, usually unrelated individuals.

Selfing: Mating among meiotic products from the individual; used in the broader literature to mean “diploid selfing.” See Diploid selfing, Haploid selfing.

Sexes: Different types of individuals in the population, one type producing large gametes (females) and the other type producing small gametes (males).

Syngamy: Haploid cell fusion during mating.

Tetrapolarity: Breeding system with two unlinked loci controlling mating type; it is often associated with multiple alleles in fungi.

Acknowledgments. M.A.C. acknowledges postdoctoral grant SFRH/BPD/79198/2011 from Fundação para a Ciência e a Tecnologia, Portugal, and the Unidade de Ciências Biomoleculares Aplicadas – UCIBIO, which is cofinanced by FCT/MEC (UID/Multi/04378/2013) and by the ERDF under the PT2020 Partnership Agreement (POCI-01-0145-FEDER-007728). M.E.H. acknowledges support from the National Institutes of Health (award R15GM119092), and T.G. acknowledges ERC starting grant GenomeFun 309403 and grant ANR-09-0064-01. We acknowledge the Broad Institute, the U.S. Department of Energy Joint Genome Institute, the RIKEN Center for Life Science Technologies for providing free access to many Basidiomycota genomes, and the many researchers and funding agencies that have contributed to these vast and ever-increasing public resources. We apologize to those whose work we may have failed to cite.

Citation. Coelho MA, Bakkeren G, Sun S, Hood ME, Giraud T. 2017. Fungal sex: the basidiomycota. *Microbiol Spectrum* 5(3): FUNK-0046-2016.

References

- Raper JR. 1966. *Genetics of Sexuality in Higher Fungi*. Roland Press, New York, NY.
- Morrow CA, Fraser JA. 2009. Sexual reproduction and dimorphism in the pathogenic basidiomycetes. *FEMS Yeast Res* 9:161–177.
- Hibbett DS, et al. 2007. A higher-level phylogenetic classification of the Fungi. *Mycol Res* 111:509–547.
- Kirk MP, Cannon PF, Minter DW, Stalpers JA. 2008. *Dictionary of the Fungi*, 10th ed. CABI, Oxon, United Kingdom.
- Hibbett DS. 2006. A phylogenetic overview of the Agaricomycotina. *Mycologia* 98:917–925.
- Begerow D, Bauer R, Boekhout T. 2000. Phylogenetic placements of ustilaginomycetous anamorphs as deduced from nuclear LSU rDNA sequences. *Mycol Res* 104:53–60.
- Begerow D, Schäfer AM, Kellner R, Yurkov A, Kemler M, Oberwinkler F, Bauer R. 2014. Ustilaginomycotina, p 295–329. In McLaughlin DJ, Spatafora JW (ed), *Systematics and Evolution: Part A*. Springer, Heidelberg, Germany.
- Aime MC, Toome M, McLaughlin DJ. 2014. Pucciniomycotina, p 271–294. In McLaughlin DJ, Spatafora JW (ed), *Systematics and Evolution: Part A*. Springer, Heidelberg, Germany.
- Aime MC, Matheny PB, Henk DA, Frieders EM, Nilsson RH, Piepenbring M, McLaughlin DJ, Szabo LJ, Begerow D, Sampaio JP, Bauer R, Weiss M, Oberwinkler F, Hibbett D. 2006. An overview of the higher level classification of Pucciniomycotina based on combined analyses of nuclear large and small subunit rDNA sequences. *Mycologia* 98:896–905.
- Bary A, Balfour BI, Garnser HEF. 1887. *Comparative Morphology and Biology of the Fungi, Mycetozoa and Bacteria*. Clarendon Press, Oxford, United Kingdom.
- Kniep H. 1928. *Die Sexualität der Niederen Pflanzen*. G. Fischer, Jena, Germany.
- Buller AHR. 1930. The biological significance of conjugate nuclei in *Coprinus lagopus* and other hymenomycetes. *Nature* 126:686–689.
- Whitehouse HLK. 1949. Multiple-allelomorph heterothallism in the fungi. *New Phytol* 48:212–244.
- Meinhardt F, Esser K, Lemke PA. 1990. Sex determination and sexual differentiation in filamentous fungi. *Crit Rev Plant Sci* 9:329–341.
- Billiard S, López-Villavicencio M, Devier B, Hood ME, Fairhead C, Giraud T. 2011. Having sex, yes, but with whom? Inferences from fungi on the evolution of anisogamy and mating types. *Biol Rev Camb Philos Soc* 86:421–442.
- James TY. 2015. Why mushrooms have evolved to be so promiscuous: insights from evolutionary and ecological patterns. *Fungal Biol Rev* 29:167–178.
- Nieuwenhuis BPS, Billiard S, Vuilleumier S, Petit E, Hood ME, Giraud T. 2013. Evolution of uni- and bifactorial sexual compatibility systems in fungi. *Hered (Edinb)* 111:445–455.
- Casselton LA, Olesnicky NS. 1998. Molecular genetics of mating recognition in basidiomycete fungi. *Microbiol Mol Biol Rev* 62:55–70.
- Lee SC, Ni M, Li W, Shertz C, Heitman J. 2010. The evolution of sex: a perspective from the fungal kingdom. *Microbiol Mol Biol Rev* 74:298–340.
- Kües U. 2015. From two to many: multiple mating types in Basidiomycetes. *Fungal Biol Rev* 29:126–166.
- Kües U, Casselton LA. 1992. Fungal mating type genes: regulators of sexual development. *Mycol Res* 96:993–1006.
- Kothe E. 1996. Tetrapolar fungal mating types: sexes by the thousands. *FEMS Microbiol Rev* 18:65–87.
- Raper J, Flexer A. 1971. Mating systems and evolution of the Basidiomycetes, p 149–167. In Petersen RH (ed), *Evolution in the Higher Basidiomycetes*. University of Tennessee Press, Knoxville, TN.
- Whitehouse HLK. 1951. A survey of heterothallism in the Ustilaginales. *Trans Br Mycol Soc* 34:340–355.
- Buller AHR. 1950. *Researches on Fungi: the Sexual Process in the Uredinales*. University of Toronto Press, Toronto, Canada.
- Bölker M, Urban M, Kahmann R. 1992. The *a* mating type locus of *U. maydis* specifies cell signaling components. *Cell* 68:441–450.

27. Manolaridis I, Kulkarni K, Dodd RB, Ogasawara S, Zhang Z, Bineva G, O'Reilly N, Hanrahan SJ, Thompson AJ, Cronin N, Iwata S, Barford D. 2013. Mechanism of farnesylated CAAX protein processing by the intramembrane protease Rce1. *Nature* 504: 301–305.
28. Raudaskoski M, Kothe E. 2010. Basidiomycete mating type genes and pheromone signaling. *Eukaryot Cell* 9: 847–859.
29. Xue C, Hsueh YP, Heitman J. 2008. Magnificent seven: roles of G protein-coupled receptors in extracellular sensing in fungi. *FEMS Microbiol Rev* 32:1010–1032.
30. Kamiya Y, Sakurai A, Tamura S, Takahashi N, Abe K, Tsuchiya E, Fukui S, Kitada C, Fujino M. 1978. Structure of rhodotorucine A, a novel lipopeptide, inducing mating tube formation in *Rhodospodium toruloides*. *Biochem Biophys Res Commun* 83:1077–1083.
31. Kamiya Y, Sakurai A, Tamura S, Takahashi N, Abe K, Tsuchiya E, Fukui S. 1978. Isolation of rhodotorucine A, a peptidyl factor inducing the mating tube formation in *Rhodospodium toruloides*. *Agric Biol Chem* 42: 1239–1243.
32. Miyakawa T, Tabata M, Tsuchiya E, Fukui S. 1985. Biosynthesis and secretion of tremorgen A-10, a polyisoprenyl peptide mating pheromone of *Tremella mesenterica*. *Eur J Biochem* 147:489–493.
33. Spellig T, Bölker M, Lottspeich F, Frank RW, Kahmann R. 1994. Pheromones trigger filamentous growth in *Ustilago maydis*. *EMBO J* 13:1620–1627.
34. Moore TD, Edman JC. 1993. The α -mating type locus of *Cryptococcus neoformans* contains a peptide pheromone gene. *Mol Cell Biol* 13:1962–1970.
35. Wendland J, Vaillancourt LJ, Hegner J, Lengeler KB, Laddison KJ, Specht CA, Raper CA, Kothe E. 1995. The mating-type locus *B 1* of *Schizophyllum commune* contains a pheromone receptor gene and putative pheromone genes. *EMBO J* 14:5271–5278.
36. O'Shea SF, Chaure PT, Halsall JR, Olesnick NS, Leibbrandt A, Connerton IF, Casselton LA. 1998. A large pheromone and receptor gene complex determines multiple *B* mating type specificities in *Coprinus cinereus*. *Genetics* 148:1081–1090.
37. Caldwell GA, Naider F, Becker JM. 1995. Fungal lipopeptide mating pheromones: a model system for the study of protein prenylation. *Microbiol Rev* 59:406–422.
38. Michaelis S, Barrowman J. 2012. Biogenesis of the *Saccharomyces cerevisiae* pheromone a-factor, from yeast mating to human disease. *Microbiol Mol Biol Rev* 76: 626–651.
39. Coelho MA, Rosa A, Rodrigues N, Fonseca A, Gonçalves P. 2008. Identification of mating type genes in the bipolar basidiomycetous yeast *Rhodospodium toruloides*: first insight into the MAT locus structure of the Sporidiobolales. *Eukaryot Cell* 7:1053–1061.
40. Duplessis S, Cuomo CA, Lin YC, Aerts A, Tisserant E, Veneault-Fourrey C, Joly DL, Hacquard S, Amselem J, Cantarel BL, Chiu R, Coutinho PM, Feau N, Field M, Frey P, Gelhaye E, Goldberg J, Grabherr MG, Kodira CD, Kohler A, Kües U, Lindquist EA, Lucas SM, Mago R, Mauceli E, Morin E, Murat C, Pangilinan JL, Park R, Pearson M, Quesneville H, Rouhier N, Sakthikumar S, Salamov AA, Schmutz J, Selles B, Shapiro H, Tanguay P, Tuskan GA, Henrissat B, Van de Peer Y, Rouzé P, Ellis JG, Dodds PN, Schein JE, Zhong S, Hamelin RC, Grigoriev IV, Szabo LJ, Martin F. 2011. Obligate biotrophy features unraveled by the genomic analysis of rust fungi. *Proc Natl Acad Sci USA* 108: 9166–9171.
41. Kües U, James TY, Heitman J. 2011. Mating type in basidiomycetes: unipolar, bipolar, and tetrapolar patterns of sexuality, p 97–160. In Pöggeler S, Wöstemeyer J (ed), *Evolution of Fungi and Fungal-Like Organisms*, vol 6. Springer, Heidelberg, Germany.
42. Maia TM, Lopes ST, Almeida JM, Rosa LH, Sampaio JP, Gonçalves P, Coelho MA. 2015. Evolution of mating systems in basidiomycetes and the genetic architecture underlying mating-type determination in the yeast *Leucosporidium scottii*. *Genetics* 201:75–89.
43. Xu L, Petit E, Hood ME. 2016. Variation in mate-recognition pheromones of the fungal genus *Microbotryum*. *Hered (Edinb)* 116:44–51.
44. Akada R, Minomi K, Kai J, Yamashita I, Miyakawa T, Fukui S. 1989. Multiple genes coding for precursors of rhodotorucine A, a farnesyl peptide mating pheromone of the basidiomycetous yeast *Rhodospodium toruloides*. *Mol Cell Biol* 9:3491–3498.
45. Coelho MA, Sampaio JP, Gonçalves P. 2010. A deviation from the bipolar-tetrapolar mating paradigm in an early diverged basidiomycete. *PLoS Genet* 6:e1001052.
46. Abe K, Kusaka I, Fukui S. 1975. Morphological change in the early stages of the mating process of *Rhodospodium toruloides*. *J Bacteriol* 122:710–718.
47. Day AW. 1976. Communication through fimbriae during conjugation in a fungus. *Nature* 262:583–584.
48. Feldbrügge M, Kämper J, Steinberg G, Kahmann R. 2004. Regulation of mating and pathogenic development in *Ustilago maydis*. *Curr Opin Microbiol* 7:666–672.
49. Zarnack K, Eichhorn H, Kahmann R, Feldbrügge M. 2008. Pheromone-regulated target genes respond differentially to MAPK phosphorylation of transcription factor Prf1. *Mol Microbiol* 69:1041–1053.
50. Nadal M, García-Pedrajas MD, Gold SE. 2008. Dimorphism in fungal plant pathogens. *FEMS Microbiol Lett* 284:127–134.
51. Hartmann HA, Kahmann R, Bölker M. 1996. The pheromone response factor coordinates filamentous growth and pathogenicity in *Ustilago maydis*. *EMBO J* 15: 1632–1641.
52. Urban M, Kahmann R, Bölker M. 1996. Identification of the pheromone response element in *Ustilago maydis*. *Mol Gen Genet* 251:31–37.
53. Banham AH, Asante-Owusu RN, Göttgens B, Thompson S, Kingsnorth CS, Mellor E, Casselton LA. 1995. An N-terminal dimerization domain permits homeodomain proteins to choose compatible partners and initiate sexual development in the mushroom *Coprinus cinereus*. *Plant Cell* 7:773–783.
54. Kämper J, Reichmann M, Romeis T, Bölker M, Kahmann R. 1995. Multiallelic recognition: nonself-dependent

- dimerization of the bE and bW homeodomain proteins in *Ustilago maydis*. *Cell* 81:73–83.
55. Kahmann R, Bölker M. 1996. Self/nonself recognition in fungi: old mysteries and simple solutions. *Cell* 85: 145–148.
 56. Badrane H, May G. 1999. The divergence-homogenization duality in the evolution of the *b1* mating type gene of *Coprinus cinereus*. *Mol Biol Evol* 16:975–986.
 57. Yee AR, Kronstad JW. 1993. Construction of chimeric alleles with altered specificity at the *b* incompatibility locus of *Ustilago maydis*. *Proc Natl Acad Sci USA* 90: 664–668.
 58. Yee AR, Kronstad JW. 1998. Dual sets of chimeric alleles identify specificity sequences for the *bE* and *bW* mating and pathogenicity genes of *Ustilago maydis*. *Mol Cell Biol* 18:221–232.
 59. Schulz B, Banuett F, Dahl M, Schlesinger R, Schäfer W, Martin T, Herskowitz I, Kahmann R. 1990. The *b* alleles of *U. maydis*, whose combinations program pathogenic development, code for polypeptides containing a homeodomain-related motif. *Cell* 60:295–306.
 60. Wahl R, Zahiri A, Kämper J. 2010. The *Ustilago maydis* *b* mating type locus controls hyphal proliferation and expression of secreted virulence factors in planta. *Mol Microbiol* 75:208–220.
 61. Giraud T, Yockteng R, López-Villavicencio M, Refrégier G, Hood ME. 2008. Mating system of the anther smut fungus *Microbotryum violaceum*: selfing under heterothallism. *Eukaryot Cell* 7:765–775.
 62. Kahmann R, Kämper J. 2004. *Ustilago maydis*: how its biology relates to pathogenic development. *New Phytol* 164:31–42.
 63. Fedler M, Luh KS, Stelter K, Nieto-Jacobo F, Basse CW. 2009. The *a2* mating-type locus genes *lga2* and *rga2* direct uniparental mitochondrial DNA (mtDNA) inheritance and constrain mtDNA recombination during sexual development of *Ustilago maydis*. *Genetics* 181:847–860.
 64. Schirawski J, Heinze B, Wagenknecht M, Kahmann R. 2005. Mating type loci of *Sporisorium reilianum*: novel pattern with three *a* and multiple *b* specificities. *Eukaryot Cell* 4:1317–1327.
 65. Kellner R, Vollmeister E, Feldbrügge M, Begerow D. 2011. Interspecific sex in grass smuts and the genetic diversity of their pheromone-receptor system. *PLoS Genet* 7:e1002436. (Erratum, doi:10.1371/annotation/5feb52b-339c-4f47-82c0-03d417516446.)
 66. Riess K, Schön ME, Lutz M, Butin H, Oberwinkler F, Garnica S. 2016. On the evolutionary history of *Uleiella chilensis*, a smut fungus parasite of *Araucaria araucana* in South America: uleiellales ord. nov. in Ustilaginomycetes. *PLoS One* 11:e0147107.
 67. Gillissen B, Bergemann J, Sandmann C, Schroeer B, Bölker M, Kahmann R. 1992. A two-component regulatory system for self/non-self recognition in *Ustilago maydis*. *Cell* 68:647–657.
 68. Puhalla JE. 1970. Genetic studies of the *b* incompatibility locus of *Ustilago maydis*. *Genet Res* 16:229–232.
 69. Wong GJ, Wells K. 1985. Modified bifactorial incompatibility in *Tremella mesenterica*. *Trans Br Mycol Soc* 84:95–109.
 70. Metin B, Findley K, Heitman J. 2010. The mating type locus (*MAT*) and sexual reproduction of *Cryptococcus heveanensis*: insights into the evolution of sex and sex-determining chromosomal regions in fungi. *PLoS Genet* 6:e1000961.
 71. Findley K, Sun S, Fraser JA, Hsueh Y-P, Averette AF, Li W, Dietrich FS, Heitman J. 2012. Discovery of a modified tetrapolar sexual cycle in *Cryptococcus amylolentus* and the evolution of *MAT* in the *Cryptococcus* species complex. *PLoS Genet* 8:e1002528.
 72. Guerreiro MA, Springer DJ, Rodrigues JA, Rusche LN, Findley K, Heitman J, Fonseca A. 2013. Molecular and genetic evidence for a tetrapolar mating system in the basidiomycetous yeast *Kwoniella mangrovensis* and two novel sibling species. *Eukaryot Cell* 12:746–760.
 73. Hood ME, Scott M, Hwang M. 2015. Breaking linkage between mating compatibility factors: tetrapolarity in *Microbotryum*. *Evolution* 69:2561–2572.
 74. Yurkov A, Guerreiro MA, Sharma L, Carvalho C, Fonseca A. 2015. Multigene assessment of the species boundaries and sexual status of the basidiomycetous yeasts *Cryptococcus flavescens* and *C. terrestris* (Tremellales). *PLoS One* 10:e0120400. (Erratum, 10.1371/journal.pone.0126996.)
 75. Koh CM, Liu Y, Moehninsi, Du M, Ji L. 2014. Molecular characterization of *KU70* and *KU80* homologues and exploitation of a *KU70*-deficient mutant for improving gene deletion frequency in *Rhodospiridium toruloides*. *BMC Microbiol* 14:50.
 76. Nichols CB, Fraser JA, Heitman J. 2004. PAK kinases Ste20 and Pak1 govern cell polarity at different stages of mating in *Cryptococcus neoformans*. *Mol Biol Cell* 15:4476–4489.
 77. Smith DG, Garcia-Pedrajas MD, Hong W, Yu Z, Gold SE, Perlin MH. 2004. An *ste20* homologue in *Ustilago maydis* plays a role in mating and pathogenicity. *Eukaryot Cell* 3:180–189.
 78. Coelho MA, Gonçalves P, Sampaio JP. 2011. Evidence for maintenance of sex determinants but not of sexual stages in red yeasts, a group of early diverged basidiomycetes. *BMC Evol Biol* 11:249.
 79. Billiard S, López-Villavicencio M, Hood ME, Giraud T. 2012. Sex, outcrossing and mating types: unsolved questions in fungi and beyond. *J Evol Biol* 25:1020–1038.
 80. Riquelme M, Challen MP, Casselton LA, Brown AJ. 2005. The origin of multiple *B* mating specificities in *Coprinus cinereus*. *Genetics* 170:1105–1119.
 81. Day PR. 1960. The structure of the *A* mating type locus in *Coprinus lagopus*. *Genetics* 45:641–650.
 82. Lukens L, Yicun H, May G. 1996. Correlation of genetic and physical maps at the *A* mating-type locus of *Coprinus cinereus*. *Genetics* 144:1471–1477.
 83. Kües U, Casselton LA. 1993. The origin of multiple mating types in mushrooms. *J Cell Sci* 104:227–230.
 84. Kües U, Richardson WV, Tymon AM, Mutasa ES, Göttgens B, Gaubatz S, Gregoriades A, Casselton LA.

1992. The combination of dissimilar alleles of the *A* and *A'* gene complexes, whose proteins contain homeo domain motifs, determines sexual development in the mushroom *Coprinus cinereus*. *Genes Dev* 6: 568–577.
85. Pardo EH, O'Shea SF, Casselton LA. 1996. Multiple versions of the *A* mating type locus of *Coprinus cinereus* are generated by three paralogous pairs of multiallelic homeobox genes. *Genetics* 144:87–94.
86. Stajich JE, Wilke SK, Ahrén D, Au CH, Birren BW, Borodovsky M, Burns C, Canbäck B, Casselton LA, Cheng CK, Deng J, Dietrich FS, Fargo DC, Farman ML, Gathman AC, Goldberg J, Guigó R, Hoegger PJ, Hooker JB, Huggins A, James TY, Kamada T, Kilaru S, Kodira C, Kües U, Kupfer D, Kwan HS, Lomsadze A, Li W, Lilly WW, Ma LJ, Mackey AJ, Manning G, Martin F, Muraguchi H, Natvig DO, Palmerini H, Ramesh MA, Rehmeier CJ, Roe BA, Shenoy N, Stanke M, Ter-Hovhannisyan V, Tunlid A, Velagapudi R, Vision TJ, Zeng Q, Zolan ME, Pukkila PJ. 2010. Insights into evolution of multicellular fungi from the assembled chromosomes of the mushroom *Coprinopsis cinerea* (*Coprinus cinereus*). *Proc Natl Acad Sci USA* 107: 11889–11894.
87. Fowler TJ, Mitton MF, Rees EI, Raper CA. 2004. Crossing the boundary between the $B\alpha$ and $B\beta$ mating-type loci in *Schizophyllum commune*. *Fungal Genet Biol* 41:89–101.
88. Kües U, Nelson DR, Liu C, Yu G-J, Zhang J, Li J, Wang X-C, Sun H. 2015. Genome analysis of medicinal *Ganoderma* spp. with plant-pathogenic and saprotrophic life-styles. *Phytochemistry* 114:18–37.
89. Kamada T. 2002. Molecular genetics of sexual development in the mushroom *Coprinus cinereus*. *BioEssays* 24:449–459.
90. Kües U. 2000. Life history and developmental processes in the basidiomycete *Coprinus cinereus*. *Microbiol Mol Biol Rev* 64:316–353.
91. Casselton LA, Kües U. 2007. The origin of multiple mating types in the model mushrooms *Coprinopsis cinerea* and *Schizophyllum commune*, p 283–300. In Heitman J, Kronstad JW, Taylor JW, Casselton LA (ed), *Sex in Fungi: Molecular Determination and Evolutionary Implications*. ASM Press, Washington, DC.
92. Tymon AM, Kües U, Richardson WV, Casselton LA. 1992. A fungal mating type protein that regulates sexual and asexual development contains a POU-related domain. *EMBO J* 11:1805–1813.
93. Swiezynski KM, Day PR. 1960. Heterokaryon formation in *Coprinus lagopus*. *Genet Res* 1:114–128.
94. James TY, Lee M, van Diepen LT. 2011. A single mating-type locus composed of homeodomain genes promotes nuclear migration and heterokaryosis in the white-rot fungus *Phanerochaete chrysosporium*. *Eukaryot Cell* 10:249–261.
95. van Peer AF, Park S-Y, Shin P-G, Jang K-Y, Yoo Y-B, Park Y-J, Lee B-M, Sung G-H, James TY, Kong W-S. 2011. Comparative genomics of the mating-type loci of the mushroom *Flammulina velutipes* reveals widespread synteny and recent inversions. *PLoS One* 6:e22249.
96. Freihorst D, Fowler TJ, Bartholomew K, Raudaskoski M, Horton JS, Kothe E. 2016. The mating-type genes of the basidiomycetes, p 329–349. In Wendland J (ed), *Growth, Differentiation and Sexuality*, 3rd ed, vol 13. Springer International Publishing, Cham, Switzerland.
97. Martinez D, Larrondo LF, Putnam N, Gelpke MD, Huang K, Chapman J, Helfenbein KG, Ramaiya P, Detter JC, Larimer F, Coutinho PM, Henrissat B, Berka R, Cullen D, Rokhsar D. 2004. Genome sequence of the lignocellulose degrading fungus *Phanerochaete chrysosporium* strain RP78. *Nat Biotechnol* 22:695–700.
98. Niculita-Hirzel H, Labbé J, Kohler A, le Tacon F, Martin F, Sanders IR, Kües U. 2008. Gene organization of the mating type regions in the ectomycorrhizal fungus *Laccaria bicolor* reveals distinct evolution between the two mating type loci. *New Phytol* 180:329–342.
99. Martinez D, et al. 2009. Genome, transcriptome, and secretome analysis of wood decay fungus *Postia placenta* supports unique mechanisms of lignocellulose conversion. *Proc Natl Acad Sci USA* 106:1954–1959.
100. James TY, Sun S, Li W, Heitman J, Kuo H-C, Lee Y-H, Asiegbu FO, Olson A. 2013. Polyporales genomes reveal the genetic architecture underlying tetrapolar and bipolar mating systems. *Mycologia* 105:1374–1390.
101. Hsueh YP, Xue C, Heitman J. 2009. A constitutively active GPCR governs morphogenic transitions in *Cryptococcus neoformans*. *EMBO J* 28:1220–1233.
102. James TY. 2007. Analysis of mating-type locus organization and synteny in mushroom fungi: beyond model species, p 317–331. In Heitman J, Kronstad JW, Taylor JW, Casselton LA (ed), *Sex in Fungi: Molecular Determination and Evolutionary Implications*. ASM Press, Washington, DC.
103. Ohm RA, de Jong JF, Lugones LG, Aerts A, Kothe E, Stajich JE, de Vries RP, Record E, Levasseur A, Baker SE, Bartholomew KA, Coutinho PM, Erdmann S, Fowler TJ, Gathman AC, Lombard V, Henrissat B, Knabe N, Kües U, Lilly WW, Lindquist E, Lucas S, Magnuson JK, Piumi F, Raudaskoski M, Salamov A, Schmutz J, Schwarze FW, vanKuyk PA, Horton JS, Grigoriev IV, Wösten HA. 2010. Genome sequence of the model mushroom *Schizophyllum commune*. *Nat Biotechnol* 28:957–963.
104. Raper JR, Baxter MG, Ellingboe AH. 1960. The genetic structure of the incompatibility factors of *Schizophyllum commune*: the *A*-factor. *Proc Natl Acad Sci USA* 46:833–842.
105. Díaz-Valderrama JR, Aime MC. 2016. The cacao pathogen *Moniliophthora roreri* (Marasmiaceae) possesses biallelic *A* and *B* mating loci but reproduces clonally. *Hered (Edinb)* 116:491–501.
106. Au CH, Wong MC, Bao D, Zhang M, Song C, Song W, Law PTW, Kües U, Kwan HS. 2014. The genetic structure of the *A* mating-type locus of *Lentinula edodes*. *Gene* 535:184–190.
107. Hsueh YP, Fraser JA, Heitman J. 2008. Transitions in sexuality: recapitulation of an ancestral tri- and tetrapolar mating system in *Cryptococcus neoformans*. *Eukaryot Cell* 7:1847–1855.

108. Heitman J, Sun S, James TY. 2013. Evolution of fungal sexual reproduction. *Mycologia* 105:1–27.
109. Hibbett DS, Donoghue MJ. 2001. Analysis of character correlations among wood decay mechanisms, mating systems, and substrate ranges in homobasidiomycetes. *Syst Biol* 50:215–242.
110. Wang QM, Begerow D, Groenewald M, Liu XZ, Theelen B, Bai FY, Boekhout T. 2015. Multigene phylogeny and taxonomic revision of yeasts and related fungi in the Ustilaginomycotina. *Stud Mycol* 81:55–83.
111. Froeliger EH, Leong SA. 1991. The *a* mating-type alleles of *Ustilago maydis* are idiomorphs. *Gene* 100: 113–122.
112. Kronstad JW, Leong SA. 1989. Isolation of two alleles of the *b* locus of *Ustilago maydis*. *Proc Natl Acad Sci USA* 86:978–982.
113. Bakkeren G, Kronstad JW. 1994. Linkage of mating-type loci distinguishes bipolar from tetrapolar mating in basidiomycetous smut fungi. *Proc Natl Acad Sci USA* 91:7085–7089.
114. Bakkeren G, Kronstad JW. 1996. The pheromone cell signaling components of the *Ustilago a* mating-type loci determine intercompatibility between species. *Genetics* 143:1601–1613.
115. Lee N, Bakkeren G, Wong K, Sherwood JE, Kronstad JW. 1999. The mating-type and pathogenicity locus of the fungus *Ustilago hordei* spans a 500-kb region. *Proc Natl Acad Sci USA* 96:15026–15031.
116. Kämper J, et al. 2006. Insights from the genome of the biotrophic fungal plant pathogen *Ustilago maydis*. *Nature* 444:97–101.
117. Schirawski J, Mannhaupt G, Münch K, Brefort T, Schipper K, Doehlemann G, Di Stasio M, Rössel N, Mendoza-Mendoza A, Pester D, Müller O, Winterberg B, Meyer E, Ghareeb H, Wollenberg T, Münsterkötter M, Wong P, Walter M, Stukenbrock E, Güldener U, Kahmann R. 2010. Pathogenicity determinants in smut fungi revealed by genome comparison. *Science* 330: 1546–1548.
118. Laurie JD, Ali S, Linning R, Mannhaupt G, Wong P, Güldener U, Münsterkötter M, Moore R, Kahmann R, Bakkeren G, Schirawski J. 2012. Genome comparison of barley and maize smut fungi reveals targeted loss of RNA silencing components and species-specific presence of transposable elements. *Plant Cell* 24:1733–1745.
119. Que Y, Xu L, Wu Q, Liu Y, Ling H, Liu Y, Zhang Y, Guo J, Su Y, Chen J, Wang S, Zhang C. 2014. Genome sequencing of *Sporisorium scitamineum* provides insights into the pathogenic mechanisms of sugarcane smut. *BMC Genomics* 15:996. (Erratum, 16:244, doi: 10.1186/s12864-015-1336-4.)
120. Taniguti LM, Schaker PDC, Benevenuto J, Peters LP, Carvalho G, Palhares A, Quecine MC, Nunes FRS, Kmit MCP, Wai A, Hausner G, Aitken KS, Berkman PJ, Fraser JA, Moolhuijzen PM, Coutinho LL, Creste S, Vieira MLC, Kitajima JP, Monteiro-Vitorello CB. 2015. Complete genome sequence of *Sporisorium scitamineum* and biotrophic interaction transcriptome with sugarcane. *PLoS One* 10:e0129318.
121. Rabe F, Bosch J, Stirnberg A, Guse T, Bauer L, Seitner D, Rabanal FA, Czedik-Eysenberg A, Uhse S, Bindics J, Genencher B, Navarrete F, Kellner R, Ekker H, Kumlehn J, Vogel JP, Gordon SP, Marcel TC, Münsterkötter M, Walter MC, Sieber CMK, Mannhaupt G, Güldener U, Kahmann R, Djamei A. 2016. A complete toolset for the study of *Ustilago bromivora* and *Brachypodium* sp. as a fungal-temperate grass pathosystem. *eLife* 5:e20522.
122. Gray YH. 2000. It takes two transposons to tango: transposable-element-mediated chromosomal rearrangements. *Trends Genet* 16:461–468.
123. Gioti A, Nystedt B, Li W, Xu J, Andersson A, Averette AF, Münch K, Wang X, Kappauf C, Kingsbury JM, Kraak B, Walker LA, Johansson HJ, Holm T, Lehtiö J, Stajich JE, Mieczkowski P, Kahmann R, Kennell JC, Cardenas ME, Lundeberg J, Saunders CW, Boekhout T, Dawson TL, Munro CA, de Groot PW, Butler G, Heitman J, Scheynius A. 2013. Genomic insights into the atopic eczema-associated skin commensal yeast *Malassezia sympodialis*. *MBio* 4:e00572-12.
124. Wu G, Zhao H, Li C, Rajapakse MP, Wong WC, Xu J, Saunders CW, Reeder NL, Reilman RA, Scheynius A, Sun S, Billmyre BR, Li W, Averette AF, Mieczkowski P, Heitman J, Theelen B, Schröder MS, De Sessions PF, Butler G, Maurer-Stroh S, Boekhout T, Nagarajan N, Dawson TL Jr. 2015. Genus-wide comparative genomics of *Malassezia* delineates its phylogeny, physiology, and niche adaptation on human skin. *PLoS Genet* 11:e1005614.
125. Xu J, Saunders CW, Hu P, Grant RA, Boekhout T, Kuramae EE, Kronstad JW, Deangelis YM, Reeder NL, Johnstone KR, Leland M, Fieno AM, Begley WM, Sun Y, Lacey MP, Chaudhary T, Keough T, Chu L, Sears R, Yuan B, Dawson TL Jr. 2007. Dandruff-associated *Malassezia* genomes reveal convergent and divergent virulence traits shared with plant and human fungal pathogens. *Proc Natl Acad Sci USA* 104:18730–18735.
126. Hagen F, Khayhan K, Theelen B, Kolecka A, Polacheck I, Sionov E, Falk R, Parnmen S, Lumbsch HT, Boekhout T. 2015. Recognition of seven species in the *Cryptococcus gattii/Cryptococcus neoformans* species complex. *Fungal Genet Biol* 78:16–48.
127. Hull CM, Boily MJ, Heitman J. 2005. Sex-specific homeodomain proteins Sxi1 α and Sxi2a coordinately regulate sexual development in *Cryptococcus neoformans*. *Eukaryot Cell* 4:526–535.
128. Hsueh YP, Idnurm A, Heitman J. 2006. Recombination hotspots flank the *Cryptococcus* mating-type locus: implications for the evolution of a fungal sex chromosome. *PLoS Genet* 2:e184.
129. Sun S, Billmyre RB, Mieczkowski PA, Heitman J. 2014. Unisexual reproduction drives meiotic recombination and phenotypic and karyotypic plasticity in *Cryptococcus neoformans*. *PLoS Genet* 10:e1004849.
130. Janbon G, et al. 2014. Analysis of the genome and transcriptome of *Cryptococcus neoformans* var. *grubii* reveals complex RNA expression and microevolution leading to virulence attenuation. *PLoS Genet* 10: e1004261.

131. Sun S, Xu J. 2009. Chromosomal rearrangements between serotype A and D strains in *Cryptococcus neoformans*. *PLoS One* 4:e5524.
132. Kourist R, Bracharz F, Lorenzen J, Kracht ON, Chovatia M, Daum C, Deshpande S, Lipzen A, Nolan M, Ohm RA, Grigoriev IV, Sun S, Heitman J, Brück T, Nowrousian M. 2015. Genomics and transcriptomics analyses of the oil-accumulating basidiomycete yeast *Trichosporon oleaginosus*: insights into substrate utilization and alternative evolutionary trajectories of fungal mating systems. *MBio* 6:e00918-15.
133. Idnurm A, Hood ME, Johannesson H, Giraud T. 2015. Contrasted patterns in mating-type chromosomes in fungi: hotspots versus coldspots of recombination. *Fungal Biol Rev* 29:220–229.
134. Le Gac M, Hood ME, Fournier E, Giraud T. 2007. Phylogenetic evidence of host-specific cryptic species in the anther smut fungus. *Evolution* 61:15–26.
135. Le Gac M, Hood ME, Giraud T. 2007. Evolution of reproductive isolation within a parasitic fungal species complex. *Evolution* 61:1781–1787.
136. Bernasconi G, Antonovics J, Biere A, Charlesworth D, Delph LF, Filatov D, Giraud T, Hood ME, Marais GA, McCauley D, Pannell JR, Shykoff JA, Vyskot B, Wolfe LM, Widmer A. 2009. *Silene* as a model system in ecology and evolution. *Hered (Edinb)* 103:5–14.
137. Devier B, Aguileta G, Hood ME, Giraud T. 2009. Ancient trans-specific polymorphism at pheromone receptor genes in basidiomycetes. *Genetics* 181:209–223.
138. Kniep H. 1919. Untersuchungen über den Antherenbrand (*Ustilago violacea* Pers.). Ein Beitrag zum Sexualitätsproblem. *Ztschr Bot* 11:257–284.
139. Hood ME. 2002. Dimorphic mating-type chromosomes in the fungus *Microbotryum violaceum*. *Genetics* 160:457–461.
140. Giraud T, Jonot O, Shykoff JA. 2005. Selfing propensity under choice conditions in a parasitic fungus, *Microbotryum violaceum*, and parameters influencing infection success in artificial inoculations. *Int J Plant Sci* 166:649–657.
141. Hood ME, Antonovics J. 2000. Intratetrad mating, heterozygosity, and the maintenance of deleterious alleles in *Microbotryum violaceum* (= *Ustilago violacea*). *Hered (Edinb)* 85:231–241.
142. Hood ME, Antonovics J, Koskella B. 2004. Shared forces of sex chromosome evolution in haploid-mating and diploid-mating organisms: *Microbotryum violaceum* and other model organisms. *Genetics* 168:141–146.
143. Giraud T. 2004. Patterns of within population dispersal and mating of the fungus *Microbotryum violaceum* parasitising the plant *Silene latifolia*. *Hered (Edinb)* 93:559–565.
144. Gladieux P, Vercken E, Fontaine MC, Hood ME, Jonot O, Couloux A, Giraud T. 2011. Maintenance of fungal pathogen species that are specialized to different hosts: allopatric divergence and introgression through secondary contact. *Mol Biol Evol* 28:459–471.
145. Badouin H, Hood ME, Gouzy J, Aguileta G, Siguenza S, Perlin MH, Cuomo CA, Fairhead C, Branca A, Giraud T. 2015. Chaos of rearrangements in the mating-type chromosomes of the anther-smut fungus *Microbotryum lychnidis-dioicae*. *Genetics* 200:1275–1284.
146. Hood ME, Petit E, Giraud T. 2013. Extensive divergence between mating-type chromosomes of the anther-smut fungus. *Genetics* 193:309–315.
147. Bachtrog D. 2013. Y-chromosome evolution: emerging insights into processes of Y-chromosome degeneration. *Nat Rev Genet* 14:113–124.
148. Fontanillas E, Hood ME, Badouin H, Petit E, Barbe V, Gouzy J, de Vienne DM, Aguileta G, Poulain J, Wincker P, Chen Z, Toh SS, Cuomo CA, Perlin MH, Gladieux P, Giraud T. 2015. Degeneration of the nonrecombining regions in the mating-type chromosomes of the anther-smut fungi. *Mol Biol Evol* 32:928–943.
149. Kues U, Göttgens B, Stratmann R, Richardson WV, O’Shea SF, Casselton LA. 1994. A chimeric homeodomain protein causes self-compatibility and constitutive sexual development in the mushroom *Coprinus cinereus*. *EMBO J* 13:4054–4059.
150. Haylock RW, Economou A, Casselton LA. 1980. Dikaryon formation in *Coprinus cinereus*: selection and identification of B factor mutants. *J Gen Microbiol* 121:17–26.
151. Olesnicky NS, Brown AJ, Honda Y, Dyos SL, Dowell SJ, Casselton LA. 2000. Self-compatible B mutants in *coprinus* with altered pheromone-receptor specificities. *Genetics* 156:1025–1033.
152. James TY, Srivilai P, Kues U, Vilgalys R. 2006. Evolution of the bipolar mating system of the mushroom *Coprinellus disseminatus* from its tetrapolar ancestors involves loss of mating-type-specific pheromone receptor function. *Genetics* 172:1877–1891.
153. Aimi T, Yoshida R, Ishikawa M, Bao D, Kitamoto Y. 2005. Identification and linkage mapping of the genes for the putative homeodomain protein (*hox1*) and the putative pheromone receptor protein homologue (*rcb1*) in a bipolar basidiomycete, *Pholiota nameko*. *Curr Genet* 48:184–194.
154. Yi R, Tachikawa T, Ishikawa M, Mukaiyama H, Bao D, Aimi T. 2009. Genomic structure of the A mating-type locus in a bipolar basidiomycete, *Pholiota nameko*. *Mycol Res* 113:240–248.
155. Olson A, et al. 2012. Insight into trade-off between wood decay and parasitism from the genome of a fungal forest pathogen. *New Phytol* 194:1001–1013.
156. Perrin N. 2012. What uses are mating types? The “developmental switch” model. *Evolution* 66:947–956.
157. Wilson AM, Wilken PM, van der Nest MA, Steenkamp ET, Wingfield MJ, Wingfield BD. 2015. Homothallism: an umbrella term for describing diverse sexual behaviours. *IMA Fungus* 6:207–214.
158. Roach KC, Feretzaki M, Sun S, Heitman J. 2014. Unisexual Reproduction, p 255–305. In Friedmann T, Dunlap JC, Goodwin SF (ed), *Advances in Genetics*, vol 85. Academic Press, San Diego, CA.
159. Raju NB, Perkins DD. 1994. Diverse programs of ascus development in pseudohomothallic species of *Neuros-*

- pora, *Gelasinospora*, and *Podospora*. *Dev Genet* 15: 104–118.
160. Merino ST, Nelson MA, Jacobson DJ, Natvig DO. 1996. Pseudohomothallism and evolution of the mating-type chromosome in *Neurospora tetrasperma*. *Genetics* 143:789–799.
 161. Callac P, Spataro C, Caille A, Imbernon M. 2006. Evidence for outcrossing via the Buller phenomenon in a substrate simultaneously inoculated with spores and mycelium of *Agaricus bisporus*. *Appl Environ Microbiol* 72:2366–2372.
 162. Lin X, Heitman J. 2007. Mechanisms of homothallism in fungi and transitions between heterothallism and homothallism, p 35–57. In Heitman J, Kronstad JW, Taylor JW, Casselton LA (ed), *Sex in Fungi: Molecular Determination and Evolutionary Implications*. ASM Press, Washington, DC.
 163. Ullrich RC, Raper JR. 1975. Primary homothallism-relation to heterothallism in the regulation of sexual morphogenesis in *Sistotrema*. *Genetics* 80:311–321.
 164. Griffith GW, Hedger JN. 1994. The breeding biology of biotypes of the witches' broom pathogen of cocoa, *Crinipellis pernicioso*. *Heredity* 72:278–289.
 165. Kües U, Navarro-González M. 2010. Mating-type orthologous genes in the primarily homothallic *Moniliophthora pernicioso*, the causal agent of witches' broom disease in cacao. *J Basic Microbiol* 50: 442–451.
 166. David-Palma M, Libkind D, Sampaio JP. 2014. Global distribution, diversity hot spots and niche transitions of an astaxanthin-producing eukaryotic microbe. *Mol Ecol* 23:921–932.
 167. Bellora N, Moline M, David-Palma M, Coelho MA, Hittinger CT, Sampaio JP, Goncalves P, Libkind D. 2016. Comparative genomics provides new insights into the diversity, physiology, and sexuality of the only industrially exploited tremellomycete: *Phaffia rhodozyma*. *BMC Genomics* 17:901.
 168. David-Palma M, Sampaio JP, Gonçalves P. 2016. Genetic dissection of sexual reproduction in a primary homothallic basidiomycete. *PLoS Genet* 12:e1006110.
 169. Lin X, Hull CM, Heitman J. 2005. Sexual reproduction between partners of the same mating type in *Cryptococcus neoformans*. *Nature* 434:1017–1021.
 170. Ni M, Feretzaki M, Li W, Floyd-Averette A, Mieczkowski P, Dietrich FS, Heitman J. 2013. Unisexual and hetero-sexual meiotic reproduction generate aneuploidy and phenotypic diversity *de novo* in the yeast *Cryptococcus neoformans*. *PLoS Biol* 11:e1001653.
 171. Heitman J, Kozel TR, Kwon-Chung KJ, Perfect JR, Casadevall A. 2011. *Cryptococcus: from Human Pathogen to Model Yeast*. ASM Press, Washington, DC.
 172. Alby K, Bennett RJ. 2011. Interspecies pheromone signaling promotes biofilm formation and same-sex mating in *Candida albicans*. *Proc Natl Acad Sci USA* 108:2510–2515.
 173. Alby K, Schaefer D, Bennett RJ. 2009. Homothallic and heterothallic mating in the opportunistic pathogen *Candida albicans*. *Nature* 460:890–893.
 174. Wilson AM, Godlonton T, van der Nest MA, Wilken PM, Wingfield MJ, Wingfield BD. 2015. Unisexual reproduction in *Huntia moniliformis*. *Fungal Genet Biol* 80:1–9.
 175. Whitehouse HLK. 1949. Heterothallism and sex in the fungi. *Biol Rev Camb Philos Soc* 24:411–447.
 176. Aanen DK, Hoekstra RF. 2007. Why sex is good: on fungi and beyond, p 527–534. In Heitman J, Kronstad JW, Taylor JW, Casselton LA (ed), *Sex in Fungi: Molecular Determination and Evolutionary Implications*. ASM Press, Washington, DC.
 177. Roach KC, Heitman J. 2014. Unisexual reproduction reverses Muller's ratchet. *Genetics* 198:1059–1069.
 178. Attanayake RN, Tennekoon V, Johnson DA, Porter LD, del Rio-Mendoza L, Jiang D, Chen W. 2014. Inferring outcrossing in the homothallic fungus *Sclerotinia sclerotiorum* using linkage disequilibrium decay. *Hered (Edinb)* 113:353–363.
 179. Talas F, McDonald BA. 2015. Genome-wide analysis of *Fusarium graminearum* field populations reveals hotspots of recombination. *BMC Genomics* 16:996.
 180. López-Villavicencio M, Debets AJ, Slakhorst M, Giraud T, Schoustra SE. 2013. Deleterious effects of recombination and possible nonrecombinatorial advantages of sex in a fungal model. *J Evol Biol* 26:1968–1978.
 181. Otto SP. 2009. The evolutionary enigma of sex. *Am Nat* 174(Suppl 1):S1–S14.
 182. Selker EU. 1991. Repeat-induced point mutation and DNA methylation, p 258–265. In Bennett JW, Lasure LL (ed), *More Gene Manipulations in Fungi*. Academic Press, San Diego, CA.
 183. Shiu PK, Raju NB, Zickler D, Metzberg RL. 2001. Meiotic silencing by unpaired DNA. *Cell* 107:905–916.
 184. Grigoriev IV, Nikitin R, Haridas S, Kuo A, Ohm R, Otilar R, Riley R, Salamov A, Zhao X, Korzeniewski F, Smirnova T, Nordberg H, Dubchak I, Shabalov I. 2014. MycoCosm portal: gearing up for 1000 fungal genomes. *Nucleic Acids Res* 42(D1):D699–D704.
 185. Cuomo CA, Birren BW. 2010. The Fungal Genome Initiative and lessons learned from genome sequencing. *Methods Enzymol* 470:833–855.
 186. Cuomo CA, Bakkeren G, Khalil HB, Panwar V, Joly D, Linning R, Sakthikumar S, Song X, Adiconis X, Fan L, Goldberg JM, Levin JZ, Young S, Zeng Q, Anikster Y, Bruce M, Wang M, Yin C, McCallum B, Szabo LJ, Hulbert S, Chen X, Fellers JP. 2017. Comparative analysis highlights variable genome content of wheat rusts and divergence of the mating loci. *G3 (Bethesda)* 7: 361–376.
 187. Anikster Y, Eilam T, Mittelman L, Szabo LJ, Bushnell WR. 1999. Pycnial nectar of rust fungi induces cap formation on pycniospores of opposite mating type. *Mycologia* 91:858–870.
 188. Lawrence GJ. 1980. Multiple mating-type specificities in the flax rust *Melampsora lini*. *Science* 209:501–503.
 189. Narisawa K, Yamaoka Y, Katsuya K. 1994. Mating type of isolates derived from the spermatogonial state of *Puccinia coronata* var. *coronata*. *Mycoscience* 35: 131–135.

190. Raper JR. 1960. The control of sex in fungi. *Am J Bot* 47:794–808.
191. Travis J. 2006. Is it what we know or who we know? Choice of organism and robustness of inference in ecology and evolutionary biology: (American Society of Naturalists Presidential Address). *Am Nat* 167:303–314.
192. Wang Z, Nilsson RH, James TY, Dai Y, Townsend JP. 2016. Future perspectives and challenges of fungal systematics in the age of big data, p 25–46. In Li D-W (ed), *Biology of Microfungi*. Springer International Publishing, Cham, Switzerland.
193. Nguyen LT, Schmidt HA, von Haeseler A, Minh BQ. 2015. IQ-TREE: a fast and effective stochastic algorithm for estimating maximum-likelihood phylogenies. *Mol Biol Evol* 32:268–274.
194. Coelho MA, Gonçalves C, Sampaio JP, Gonçalves P. 2013. Extensive intra-kingdom horizontal gene transfer converging on a fungal fructose transporter gene. *PLoS Genet* 9:e1003587.
195. Katoh K, Standley DM. 2013. MAFFT multiple sequence alignment software version 7: improvements in performance and usability. *Mol Biol Evol* 30:772–780.
196. Capella-Gutiérrez S, Silla-Martínez JM, Gabaldón T. 2009. trimAl: a tool for automated alignment trimming in large-scale phylogenetic analyses. *Bioinformatics* 25:1972–1973.
197. Bennett RJ, Turgeon BG. 2017. Fungal sex: the Ascomycota. *Microbiol Spectrum* 4(5):FUNK-0005-2016.