



**HAL**  
open science

## Aldehyde dehydrogenases inhibition eradicates leukemia stem cells while sparing normal progenitors

G. Venton, M Pérez-Alea, C. Baier, G. Fournet, G Quash, Y Labiad, G Martin, F Sanderson, P. Poullin, P. Suchon, et al.

### ► To cite this version:

G. Venton, M Pérez-Alea, C. Baier, G. Fournet, G Quash, et al.. Aldehyde dehydrogenases inhibition eradicates leukemia stem cells while sparing normal progenitors. *Blood Cancer Journal*, 2016, 6 (9), pp.e469-e469. 10.1038/bcj.2016.78 . hal-02324893

**HAL Id: hal-02324893**

**<https://hal.science/hal-02324893v1>**

Submitted on 28 Sep 2023

**HAL** is a multi-disciplinary open access archive for the deposit and dissemination of scientific research documents, whether they are published or not. The documents may come from teaching and research institutions in France or abroad, or from public or private research centers.

L'archive ouverte pluridisciplinaire **HAL**, est destinée au dépôt et à la diffusion de documents scientifiques de niveau recherche, publiés ou non, émanant des établissements d'enseignement et de recherche français ou étrangers, des laboratoires publics ou privés.

## ORIGINAL ARTICLE

## Aldehyde dehydrogenases inhibition eradicates leukemia stem cells while sparing normal progenitors

G Venton<sup>1,2,3</sup>, M Pérez-Alea<sup>4</sup>, C Baier<sup>1,3</sup>, G Fournet<sup>5</sup>, G Quash<sup>3</sup>, Y Labiad<sup>1</sup>, G Martin<sup>3</sup>, F Sanderson<sup>6</sup>, P Poullin<sup>6</sup>, P Suchon<sup>7,8</sup>, L Farnault<sup>2</sup>, C Nguyen<sup>1</sup>, C Brunet<sup>9</sup>, I Ceylan<sup>3</sup> and RT Costello<sup>1,2</sup>

The vast majority of patients with acute myeloid leukemia (AML) achieve complete remission (CR) after standard induction chemotherapy. However, the majority subsequently relapse and die of the disease. A leukemia stem cell (LSC) paradigm has been invoked to explain this failure of CR to reliably translate into cure. Indeed, LSCs are highly enriched in CD34+CD38<sup>-</sup> leukemic cells that exhibit positive aldehyde dehydrogenase activity (ALDH+) on flow cytometry, these LSCs are resistant to currently existing treatments in AML such as cytarabine and anthracycline that, at the cost of great toxicity on normal cells, are highly active against the leukemic bulk, but spare the LSCs responsible for relapse. To try to combat the LSC population selectively, a well-characterized ALDH inhibitor by the trivial name of dimethyl ampal thiolester (DIMATE) was assessed on sorted CD34+CD38<sup>-</sup> subpopulations from AML patients and healthy patients. ALDH activity and cell viability were monitored by flow cytometry. From enzyme kinetic studies DIMATE is an active enzyme-dependent, competitive, irreversible inhibitor of ALDH1. On cells in culture, DIMATE is a powerful inhibitor of ALDHs 1 and 3, has a major cytotoxic activity on human AML cell lines. Moreover, DIMATE is highly active against leukemic populations enriched in LSCs, but, unlike conventional chemotherapy, DIMATE is not toxic for healthy hematopoietic stem cells which retained, after treatment, their self-renewing and multi-lineage differentiation capacity in immunodeficient mice, xenografted with human leukemic cells. DIMATE eradicates specifically human AML cells and spares healthy mouse hematologic cells.

*Blood Cancer Journal* (2016) 6, e469; doi:10.1038/bcj.2016.78; published online 9 September 2016

## INTRODUCTION

Acute myeloid leukemia (AML) is the most common acute leukemia in adults, with a median age of 69 years.<sup>1</sup> The vast majority of patients with AML achieve complete remission after standard induction chemotherapy. However, the majority subsequently relapse and die of the disease.<sup>2–4</sup> A leukemia stem cell (LSC) paradigm may explain this failure of complete remission to reliably translate into cure. LSCs, like normal hematopoietic stem cells (HSCs), have self-renewal capacity and give rise to partially differentiated progeny that composes the bulk of the leukemia, but possesses only limited proliferative potential.<sup>5</sup> The currently existing treatments in AML, such as cytarabine (ara-C) and anthracycline (for example, daunorubicin), at the cost of a great toxicity, are highly active against the leukemic bulk, but spare the LSCs responsible for relapse.<sup>6,7</sup> Therefore, AML remains a clinical challenge and new therapies are urgently needed.<sup>8–10</sup>

Only a rare population of AML cells enriched for LSCs, characterized by a CD34+CD38<sup>-</sup> phenotype is capable of generating leukemia in immunodeficient mice.<sup>11</sup> More recently, evidence has been presented for a clinically relevant population of leukemic cells CD34+CD38<sup>-</sup> in AML. This leukemic subpopulation, with a positive aldehyde dehydrogenase activity (ALDH+) in flow cytometry has been shown to be highly enriched in LSCs.<sup>12–14</sup> Interest in ALDH is due to its activity as a marker for identification

of stem cell in different tissues.<sup>15,16</sup> The different isoforms of ALDHs (ALDH1, 2 and 3) control the levels of three endogenous apoptogenic aldehydes: methional, malondialdehyde (MDA) and 4-hydroxynonenal (HNE). Cancer cells protect themselves from the apoptogenic effect of these aldehydes by the ALDHs that oxidize them to their non-apoptogenic carboxylic acids.<sup>17</sup>

Among the family of acetylenic ALDH inhibitors, we identified the dimethyl ampal thiolester (DIMATE), an  $\alpha,\beta$ , acetylenic N-substituted aminothioliol ester, as an interesting candidate for cancer treatment. DIMATE is an active enzyme-dependent, competitive, irreversible inhibitor of ALDHs 1 and 3.<sup>18,19</sup> It induces apoptosis in the chemoresistant mouse lymphoid cells BAF3bcl2 that are also resistant to disulfiram, a well-characterized inhibitor of ALDH2.<sup>20</sup> Moreover, although DIMATE was apoptogenic on cultures of human prostate cancer cells DU145, it was reversibly cytostatic on normal human prostate epithelial cells.<sup>19</sup>

On the basis of these preliminary data on ALDH activity in LSC and differential effects between normal and cancer cells, we hypothesized that DIMATE could be a candidate for targeted therapy on LSC while sparing normal hematopoietic progenitors, thus providing an efficient and safe approach for chemotherapy of acute leukemia aiming at the eradication of minimal residual disease.

<sup>1</sup>Aix-Marseille Université, INSERM, UMR1090, TAGC Campus, Marseille, France; <sup>2</sup>Department of Hematology and Cellular therapy, AP-HM, Conception Hospital, Marseille, France; <sup>3</sup>Advanced BioDesign, Lyon, France; <sup>4</sup>Lab Animal Models and Cancer Laboratory Anatomy Pathology Program, Institut de Recerca Vall d' Hebron, Barcelona, Spain; <sup>5</sup>Univ Lyon, Université Claude Bernard Lyon 1, ICBMS UMR5246, Villeurbanne, France; <sup>6</sup>Department of Apheresis and Autotransfusion, APHM, Conception Hospital, Marseille, France; <sup>7</sup>Hematology laboratory, APHM, Hôpital de la Timone, Marseille, France; <sup>8</sup>UMR 1062 NORT, INSERM, Marseille, France and <sup>9</sup>Hematology laboratory, APHM, Hôpital de la Conception, Marseille, France. Correspondence: Professor RT Costello, Service d'Hématologie, Centre Hospitalier Universitaire La Conception, 147 Boulevard Baïlle, 13005 Marseille, France.

E-mail: regiscostello@tagc@gmail.com

Received 29 July 2016; accepted 4 August 2016

## MATERIALS AND METHODS

### Patient samples

Peripheral blood samples from 10 patients with AML (Table 1) were collected before leukemia chemotherapy and after informed consent, and were part of the diagnostic procedures. The study was approved by the institutional review board from the Mediterranean V (Ref. 15.013) and Agence National de la Sécurité du Médicament (Ref. 150054B-11). Control non-leukemic HSCs were collected by apheresis from patients ( $n=55$ ) requiring autologous stem cell transplantation for non-myeloid malignancies.

### Cell sorting

Peripheral blood mononuclear cells from control donors and leukemic patients were isolated by Ficoll-Hystopaque density gradient centrifugation (Sigma-Aldrich, Saint-Quentin, France). CD34+ cell sorting was first performed with CD34 MicroBead Kit UltraPure (MACS; Miltenyi Biotec, Paris, France). Then leukemic and healthy CD34+CD38- or CD34+CD38+ subpopulations were obtained by flow cytometry cell sorting using double staining with anti-CD34 (APC MACS; Miltenyi Biotec) and anti-CD38 (FITC, MACS; Miltenyi Biotec) mAbs, with an exclusion of at least 20 channels between the CD38+ and CD38- subpopulations (data not shown). The purity of the preparation ( $\geq 99\%$  of CD34+CD38- leukemic or healthy cells) was assessed by flow cytometry reanalysis of sorted cells. CD34+CD38- enriched cells were plated during 48 h at  $6.10^4$  cells/ml in CellGro GMP SCGM medium supplemented with rh SCF (100 ng/ml), rh TPO (20 ng/ml) and rh Flt3 (50 ng/ml) (all from CellGenix GmbH, Freiburg, Germany).

### Cell culture

We used the following leukemic cell lines: HL-60 (derived from a 36-year-old female with AML M2), THP-1 (derived from a 1-year-old male with AML M5), Kasumi-1 (derived from a 7-year-old male with AML M2), Kasumi-3 (derived from a 57-year-old male with AML M0), MOLM-14 (derived from a 20-year-old male with AML M5) and KG-1 (derived from a 59-year-old male with AML M6). All AML cells lines were obtained from the American Type Culture Collection (ATCC), the European Collection of Cell Cultures (ECACC) and were cultured in RPMI-1640 Glutamax supplemented with 10–20% fetal bovine serum (GE Healthcare fetal bovine serum, Europe, GmbH, Pasching, Austria) at 37 °C in a humidified atmosphere of 5% CO<sub>2</sub>–95% air.

### Cell viability

Cells were seeded into 96-well cell culture plates at a concentration of 50 000 cells/well. Cell viability was monitored by AlamarBlue Cell viability protocol (Thermo Fisher Scientific, Illkirch, France) on a TriStar LB 941 Multimode Microplate Reader (Berthold Technologies, Thoiry, France).

The sensitivity toward different drugs DIMATE (Advanced BioDesign, Lyon, France), cytarabine, daunorubicine and azacitidin (Sigma-Aldrich) was determined using different concentrations of the drugs. After 48 h, the growth inhibitory effect of the drug was analyzed using Resasurin (Sigma-Aldrich) according to manufacturer's instruction. The drug response was quantified by the half maximal inhibitory concentration (IC50) for each particular cell line, and determined by non-linear regression analysis of log-dose/response curves.

ALDH activity (ALDEFLUOR kit, StemCell Technologies, Grenoble, France) and cell viability (with 7-AAD, Immunotech, Marseille, France), of the healthy and leukemic CD34+CD38-, were concomitantly performed by flow cytometry, to monitor specifically the CD34+CD38-ALDH+ and CD34+CD38-ALDH- subpopulations viability.

### ALDEFLUOR assay

Enzyme activity of ALDH was detected with ALDEFLUOR kit (StemCell Technologies). Control and leukemic CD34+CD38- cells and leukemic cell lines ( $1.10^6$  cells/ml) were incubated under control condition or treated with 1,3,5 10  $\mu\text{mol/l}$  of DIMATE overnight. Then, cells were washed in phosphate-buffered saline (PBS) 1 $\times$  and were suspended in ALDEFLUOR assay buffer. For each condition (250 000 cells/500  $\mu\text{l}$ ), diethyl aminobenzaldehyde (DEAB), a broad inhibitor of ALDH, was used as control of the background fluorescence. ALDEFLUOR DEAB reagent ('control' condition) or ALDEFLUOR activated reagent ('test' condition) were added to cell suspension and were incubated 30 min at 37 °C.

### Quantitative determination of HNE protein and MDA/protein adducts by ELISA

The formation of 4-HNE protein and MDA protein adducts was quantified with the Oxiselect HNE Adduct Elisa kit (Cell Biolabs, San Diego, CA, USA) and the Oxiselect MDA Adduct ELISA Kit (Cell Biolabs), respectively. Briefly, cell lysates were prepared by sonication in reducing SDS Sample Buffer. Homogenates were diluted to 10  $\mu\text{g}$  protein/ml and adsorbed in 96-well protein binding plates by incubation at 37 °C for at least 2 h. Wells were washed twice with PBS and incubated for an additional 2 h at room temperature on an orbital shaker. Following three washes in PBS, 100  $\mu\text{l}$  of anti-HNE antibody or anti-MDA were added to the wells and incubated for 1 h at room temperature. Subsequently, goat anti-rabbit secondary antibody-HRP conjugate (diluted 1/1000 with the assay diluent) was added and incubation continued for 1 h. Wells were washed five times in PBS and HRP substrate was added. Reaction was stopped with an acidic solution, and absorbance read on a microplate reader at 450 nm. The amount of HNE protein adducts was determined by comparison with a standard curve prepared from HNE-BSA and MDA-BSA standards supplied by the manufacturer.

**Table 1.** AML patients and their clinical characteristics

AML	Age	Sex	Type	Circulating blasts	De novo or secondary AML	Previous treatments	Cytogenetic
UPN1	74	F	AML1	60%	Secondary to myelodysplastic syndrome	5 cycles of azacitidine	45,XX,+del (7q)
UPN2	79	F	AML1	81%	De novo	Induction+consolidation elderly patients (cytarabine-idarubicin)	Complex karyotype +del(5q)
UPN3	77	M	AML1	83%	De novo	Standard induction (daunorubicin-cytarabine)	Normal karyotype
UPN4	64	F	AML0	25%	Secondary to primary myelofibrosis	Double induction (daunorubicin-cytarabine followed by cytarabine-idarubicin)	Complex karyotype
UPN5	75	M	AML0	40%	Secondary to myelodysplastic syndrome	Untreated	Complex karyotype +del (5q)+del (7q)
UPN6	73	F	AML5	22%	De novo	Induction+consolidation elderly patients (cytarabine-idarubicin )	t (6;11) MLL-AF6
UPN7	71	M	AML5	34%	Secondary to myelodysplastic syndrome	Induction+consolidation elderly patients (cytarabine-idarubicin )	Del (5q), del(7q), del (17p)
UPN8	91	F	AML0	59%	De novo	Untreated	Unknown
UPN9	48	M	AML7	27%	Secondary to chronic myelomonocytic leukemia	2 cycles of azacitidine+2 cycles of decitabine	Normal karyotype
UPN10	78	M	AML5	80%	De novo	Untreated	Normal karyotype

Abbreviations: AML, acute myeloid leukemia; UPN, unique patient number.

### Caspase activity assay

The caspase activity assay on DIMATE-treated HL-60 cells was evaluated using the Caspase-Glo 3/7 Assay (Promega, Madison, WI, USA) following the manufacturer's instructions. HL-60 cells were seeded at a concentration of  $5 \times 10^4$  cells/well in 100  $\mu$ l of complemented medium into 96-well flat-bottom white microplates. Cells were grown in presence of DIMATE 5  $\mu$ mol/l or vehicle in triplicate. After 1, 3, 6 and 24 h of incubation, 100  $\mu$ l of Caspase-Glo Reagent was added and the mixture was incubated for 1 h at 37 °C. The amount of luminescent corresponding to the activity of caspase 3 and 7 was quantified using a luminometer.

### Colony-forming units

Human HSCs were cultured under control conditions or with 1, 3, 5, 7, 5, 10 and 15  $\mu$ mol/l of DIMATE. To observe the self-renewing hematopoietic system, cells were washed with PBS 1 $\times$  and then counted in CellGenix medium (CellGenix GmbH) supplemented with cytokines. About 1000 to 1500 cells were plated in dishes in StemMACS HSC-CGU Media (MACS; Miltenyi Biotec) in a 37 °C humidified atmosphere containing 5% CO<sub>2</sub>. The clonogenic assays were performed in triplicate. Fifteen days later, colonies coming from differentiation of progenitors cells were counted and evaluated accordingly to manufacturer's instructions. Colony-forming unit-granulocyte macrophage, erythroid and burst-forming unit-erythroid and megakaryocyte progenitors were identified.

### In vivo experimentation

To determine the antileukemic activity of DIMATE in a clinically relevant setting, we established patient-derived xenografts, or PDX models, in which  $3 \times 10^6$  immunopurified CD34+ leukemic peripheral blood mononuclear cells from AML patient were transplanted intravenously into NOD/SCID/IL2Ry<sup>null</sup> immunodeficient mouse strain (NOG) for expansion ( $n=25$ ). For human AML xenograft, a patient with refractory AML after induction

(complex karyotype+del(5q), bad prognosis, see UPN2, Table 1) was selected. After injection of primary AML cells, NOG mice were monitored for leukemia development by flow cytometric analysis of peripheral blood for human CD45-positive (hCD45+) cells. Four weeks were required for the development of the models monitored by the h-rate corresponding to the amount of hCD45+cells/mouse CD45-positive cells (mCD45+). Mice were next randomized and treatment with DIMATE (14, 28 mg/kg) or drug vehicle started for 4 weeks. Weekly monitoring of hCD45+ and mCD45+ circulating cells was performed during all treatment period. After treatment, mice were killed and bone marrow and spleen were harvested. hCD45+ and mCD45+ sorting and monitoring, in spleen and bone marrow, and spleen weighing was performed. All *in vivo* animal studies had been reviewed and approved by the local ethics committee (01\_TransCurebio-Services-AB-01).

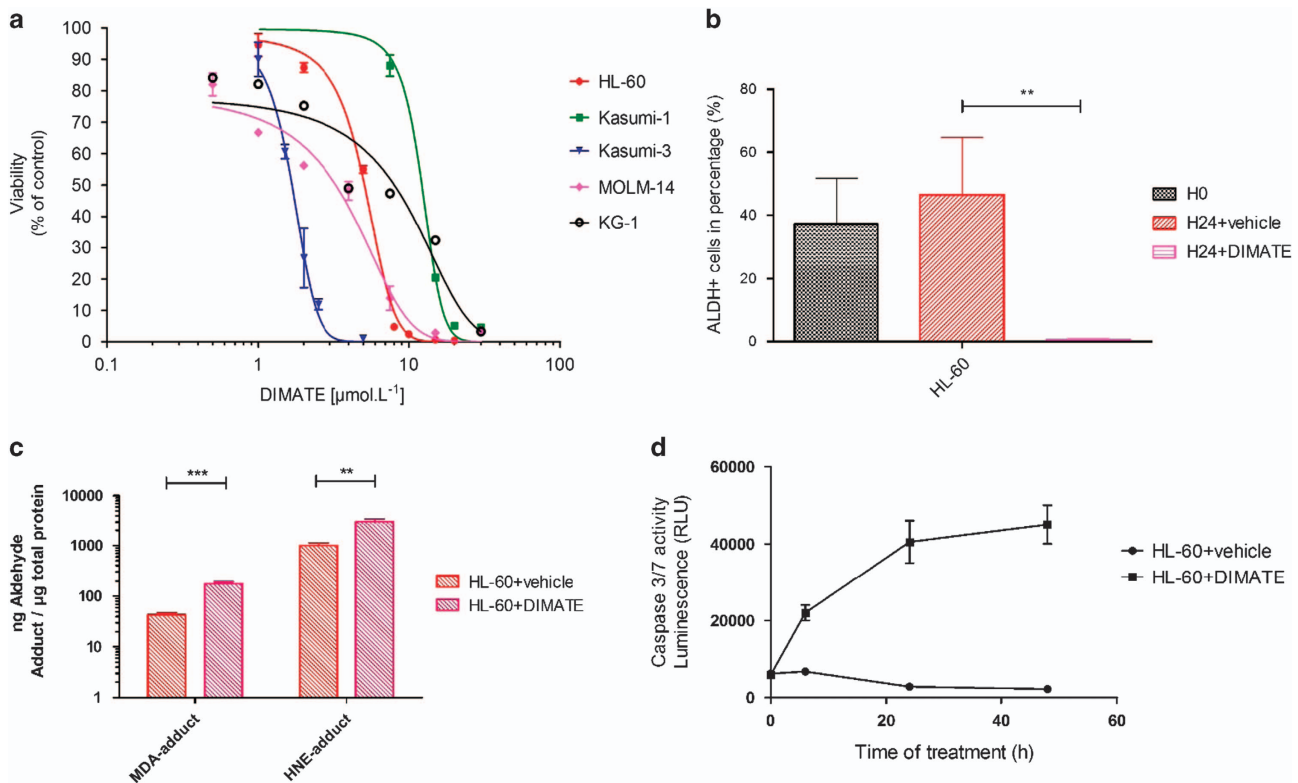
### Statistical analysis

Values are expressed as mean $\pm$ s.e.m. or frequencies and proportions. Differences between the groups were determined by unpaired *t*-test,  $\chi^2$ -, Fisher's exact test or analysis of variance, where appropriate.  $P < 0.05$  was considered statistically significant. Analysis was performed using GraphPad prism version 5.0 (GraphPad software, San Diego, CA, USA).

## RESULTS

Inhibition of ALDH by DIMATE is cytotoxic on human AML cell lines by promoting apoptogenic aldehyde accumulation inducing apoptosis

DIMATE's IC<sub>50</sub> was determined in AML cell lines showing a cytotoxic effect of DIMATE with IC<sub>50</sub> ranged between 1 and 15  $\mu$ M. On HL-60, Kasumi-1, Kasumi-3, MOLM-14 and KG-1 cell lines, the IC<sub>50</sub> of DIMATE was of 5.094  $\mu$ mol/l (s.e.m. $\pm$ 0.1007);



**Figure 1.** Inhibition of ALDH by DIMATE is cytotoxic on human AML cell lines by promoting apoptogenic aldehyde accumulation inducing apoptosis. (a) Viability assay of AML cells to increasing concentration of DIMATE. All experiments were performed in triplicates ( $n=3$ ). Values for all cell lines are showed in Supplementary Table 2. (b) Monitoring of aldehyde dehydrogenase activity in flow cytometry in HL-60. Graphic representations of average percentages of ALDH+ cells at H0, and after 24 h of cell culture, without and with DIMATE 5  $\mu$ mol/l. ( $n=3$ ). (c) Quantification of MDA and HNE adduct in HL-60 cells treated with DIMATE 5  $\mu$ mol/l during 24 h. Adduct formation is higher in cells treated than with the vehicle. (d) Monitoring of caspase 3/7 activity of HL-60 cells treated with DIMATE 5  $\mu$ mol/l. After 6 h of treatment, activation of caspase activity is observed.

12.2  $\mu\text{mol/l}$  (s.e.m.  $\pm 0.4711$ ); 1.67  $\mu\text{mol/l}$  (s.e.m.  $\pm 0.04758$ ); 3.287  $\mu\text{mol/l}$  (s.e.m.  $\pm 0.2039$ ) and 8.028  $\mu\text{mol/l}$  (s.e.m.  $\pm 1.386$ ), respectively (Figure 1a and Supplementary Table 1).

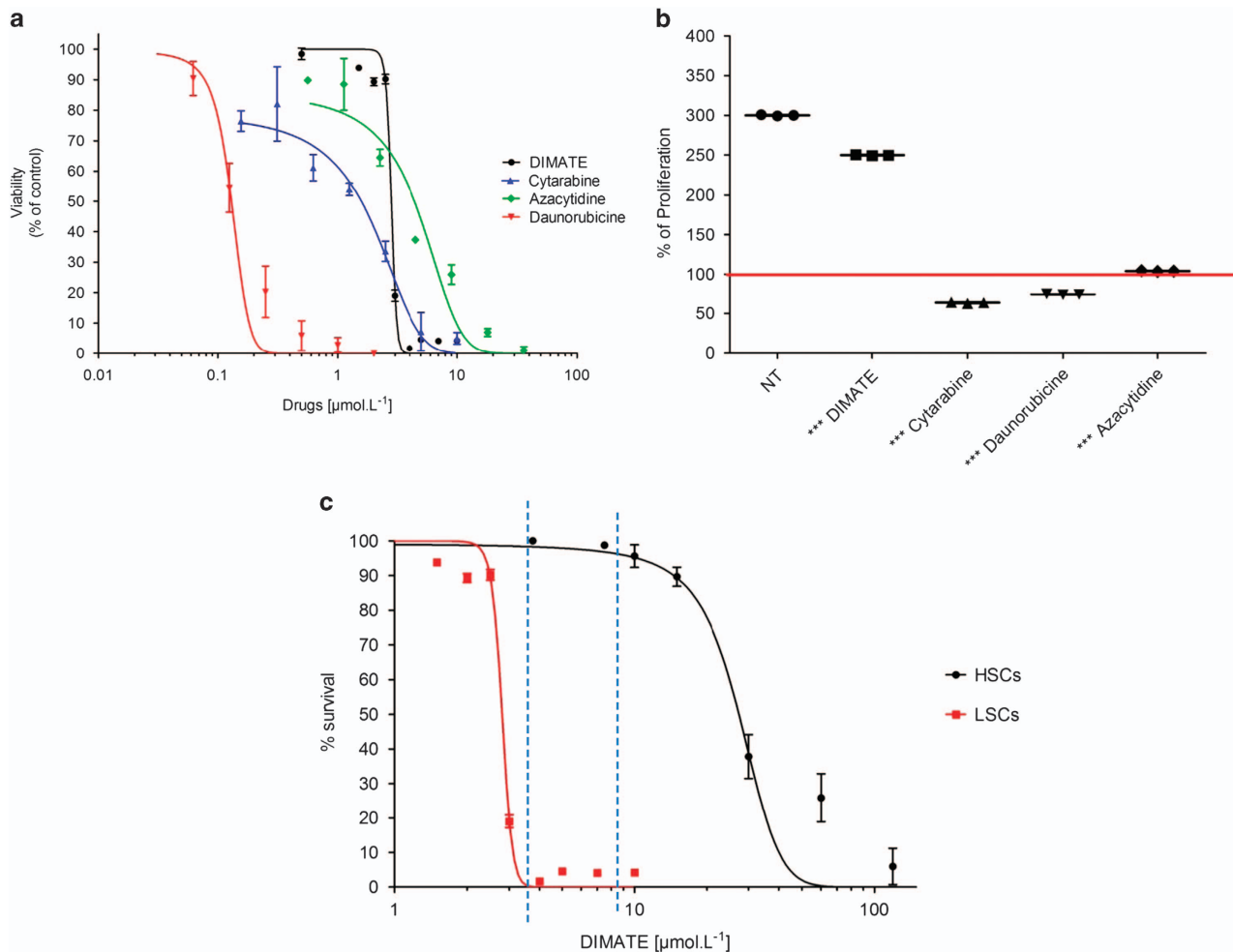
Cytotoxic effect of DIMATE is due to the inhibition of ALDH activity that leads to accumulation of apoptogenic aldehydes such as MDA and HNE. Treatment of AML cell, HL-60 with DIMATE for 24 h shows an inhibition of ALDH activity (Figure 1b) and accumulation of HNE and MDA adducts bound to proteins (Figure 1c). This accumulation caused apoptosis in a time-dependant manner by activating caspases 3 and 7 (Figure 1d).

DIMATE is selectively cytotoxic in leukemic population enriched in LSCs but unlike conventional chemotherapy, DIMATE is not toxic for healthy hematopoietic stem cells

The cytotoxicity of DIMATE was assessed on CD34+ CD38- ALDH+ leukemic peripheral blood mononuclear cells. For this population, enriched for LSCs, IC50 values of DIMATE was 2.8  $\mu\text{mol/l}$  (s.e.m.  $\pm 0.03$ ). For this same leukemic population, IC50 values of daunorubicin, ara-C and azacytidine were respectively 0.132  $\mu\text{mol/l}$  (s.e.m.  $\pm 0.009$ ), 1.5  $\mu\text{mol/l}$  (s.e.m.  $\pm 0.17$ ) and 4.41  $\mu\text{mol/l}$  (s.e.m.  $\pm 0.4$ ) (Figure 2a and Supplementary Table 2).

Healthy HSCs were treated for 48 h with the IC50 values of DIMATE, daunorubicin, ara-C and azacytidine determined on the LSCs. After 48 h of HSCs culture, mean proliferation between H0 and H48 was 300% (s.e.m.  $\pm 4.398$ ) in the untreated group and 250% (s.e.m.  $\pm 3.665$ ) in the DIMATE group ( $P < 0.01$ ). In the daunorubicin and ara-C groups there was no HSCs proliferation but a cellular death respectively of 20% (s.e.m.  $\pm 4.691$ ) ( $P < 0.01$ ) and 40% (s.e.m.  $\pm 3.417$ ) ( $P < 0.01$ ). After 48 h of treatment, azacytidine had almost a cytostatic effect on HSCs ( $P < 0.001$ ) (Figure 2b). Figure 2c shows cell survival for the LSCs and HSCs according to the different concentrations of DIMATE. The IC50 concentration was 2.79  $\mu\text{mol/l}$  (s.e.m.  $\pm 0.04$ ) for the LSCs and 24.39  $\mu\text{mol/l}$  (s.e.m.  $\pm 1.58$ ) for HSCs ( $P < 0.01$ ). A therapeutic zone could be established. Indeed, between 5 and 9  $\mu\text{mol/l}$ , DIMATE eradicated all LSCs (100% of lethality) and showed low toxicity (under 3% of lethality) on healthy HSCs.

Moreover, after 48 h of cell culture with DIMATE until 10  $\mu\text{mol/l}$ , normal HSCs retained their self-renewing and multi-lineage differentiation capacity as shown by the enumeration and evaluation of stem and progenitor cells as colony-forming units in the Supplementary Figure 1. Above 10  $\mu\text{mol/l}$ , HSCs self-



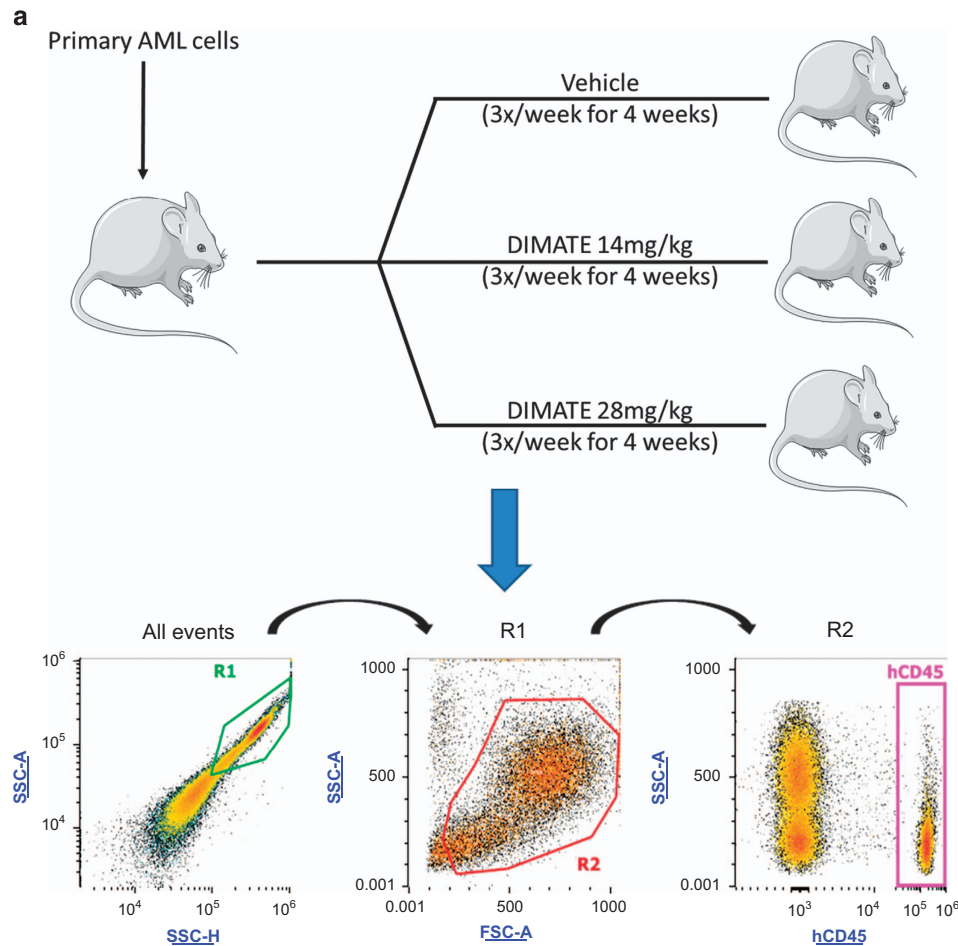
**Figure 2.** Cytotoxicity profile of DIMATE, daunorubicin, cytarabine and azacytidine on CD34+CD38-ALDH+ leukemic cells and CD34+CD38- healthy hematopoietic stem cell. (a) Cytotoxicity profiles of DIMATE, daunorubicin, cytarabine and azacytidine after 48 h of treatment for the CD34+CD38-ALDH+ leukemic cells population enriched in LSCs ( $n = 10$ ). (b) Healthy HSCs proliferation, in percentage, after 48 h of treatment with DIMATE, daunorubicin, cytarabine and azacytidine. Drugs were used at a concentration equal to the IC50 values determined for the different drugs in LSCs ( $n = 51$ ). (c) LSCs and healthy HSCs survival according to the different concentration of DIMATE ( $n = 10$ ). Dotted lines (5–9  $\mu\text{mol/l}$ ) determine a therapeutic window within DIMATE eradicated all LSCs (100% of lethality) and showed low toxicity (under 3% of lethality) on normal HSCs.

renewing and multi-lineage differentiation capacity significantly and drastically decreased ( $P < 0.01$ ). No colony-forming units were observed above  $15 \mu\text{mol/l}$  (data not shown).

In immunodeficient mice, xenografted with human leukemic cells, DIMATE eradicates specifically human AML cells and spares healthy mouse hematologic cells

NOG immunodeficient mice were engrafted with primary human AML cells. Four weeks post engraftment, hCD45+ cells represented  $17 \pm 14\%$  of circulating cells (data not shown). Mice were next randomized and treatment with DIMATE (14, 28 mg/kg) and vehicle started for 4 weeks (Figure 3a). In untreated control mice (vehicle), after 4 weeks, hCD45+ AML circulating cells increased from  $3 \times 10^5$  (s.e.m.  $\pm 1.3 \times 10^5$ ) to  $3.7 \times 10^5$  (s.e.m.  $\pm 3.3 \times 10^5$ ) (not significant). In contrast, in 14 and 28 mg/kg DIMATE-treated mice, there was a drastic and significant decrease in human AML (hCD45+) cells compared with those in the untreated mice from  $3 \times 10^5$  (s.e.m.  $\pm 1.3 \times 10^5$ ) to  $3.7 \times 10^4$  (s.e.m.  $\pm 1.7 \times 10^4$ ) in the DIMATE

14 mg/kg group ( $P < 0.01$ ) and from  $3 \times 10^5$  (s.e.m.  $\pm 1.3 \times 10^5$ ) to  $7.3 \times 10^3$  (s.e.m.  $\pm 3 \times 10^3$ ) in the DIMATE 28 mg/kg group ( $P < 0.01$ ) (Figures 3b and d). Furthermore, during all of the treatment period, no toxicity or decrease in healthy circulating mouse cells (mCD45+) was observed in all the groups, including the DIMATE 14 and 28 mg/kg groups (Figure 3c). After 4 weeks of treatment, mice were killed and bone marrow and spleen were harvested. CD45+ sorting and monitoring, in spleen and bone marrow, but also spleen weighing was performed. Compared with untreated control mice, in the DIMATE 14 and 28 mg/kg treatment groups, spleen infiltration by human AML cells drastically decreased from  $1.7 \times 10^7$  (s.e.m.  $\pm 9.9 \times 10^6$ ) to  $1.4 \times 10^6$  (s.e.m.  $\pm 8.2 \times 10^5$ ) in the DIMATE 14 mg/kg group ( $P < 0.01$ ) and to  $1.3 \times 10^5$  (s.e.m.  $\pm 7.2 \times 10^4$ ) in the DIMATE 28 mg/kg group ( $P < 0.01$ ) (Figure 3e). At the same time, each mouse spleen was weighed. Compared with untreated mice, spleen weight decreased from 182 (s.e.m.  $\pm 74.2$  g) to 40.25 g (s.e.m.  $\pm 19.4$  g) in the DIMATE 14 mg/kg group (not significant) and to 37.7 g (s.e.m.  $\pm 7.9$  g) in the DIMATE 28 mg/kg group ( $P < 0.05$ ) (Figure 3g). Regarding bone marrow,



**Figure 3.** DIMATE shows potent activity against primary AML cells transplanted in NOG mice. (a) Experimental scheme and gating strategy in flow cytometry for hCD45+ and mCD45+ cells monitoring in blood, spleen and bone marrow for study of the antileukemic activity of DIMATE in immunodeficient mice engrafted with primary human AML cells. Mice were randomized and treatment with DIMATE (14, 28 mg/kg) and vehicle started for 4 weeks. Weekly monitoring of hCD45+ and mCD45+ circulating cells were performed during the treatment. After treatment, mice were killed and bone marrow and spleen were harvested. CD45+ have been sorted and monitored in spleen and bone marrow. Spleen weighing was performed. (b) Human CD45+ cells (hCD45+) count in peripheral blood during the treatment with vehicle or DIMATE. (c) Mouse CD45+ cells (mCD45+) count in peripheral blood during the treatment with vehicle or DIMATE. (d) Absolute human AML cells in the peripheral blood of NOG mice engrafted with AML cells before and after treatment with vehicle and different concentrations of DIMATE after mice euthanasia. (e) Counts of human CD45 cells in spleen in mice engrafted with AML cells after treatment with vehicle and different concentrations of DIMATE. (f) Counts of human CD45 cells in bone marrow in mice engrafted with AML cells after treatment with vehicle and different concentrations of DIMATE. (g) Spleen weight of mice transplanted with human AML cells treated with vehicle or DIMATE. In panels (d–f) each symbol denotes a single animal ( $n = 3–6$  per group). \*\* Mean  $P < 0.001$  and \* mean  $P < 0.05$ .

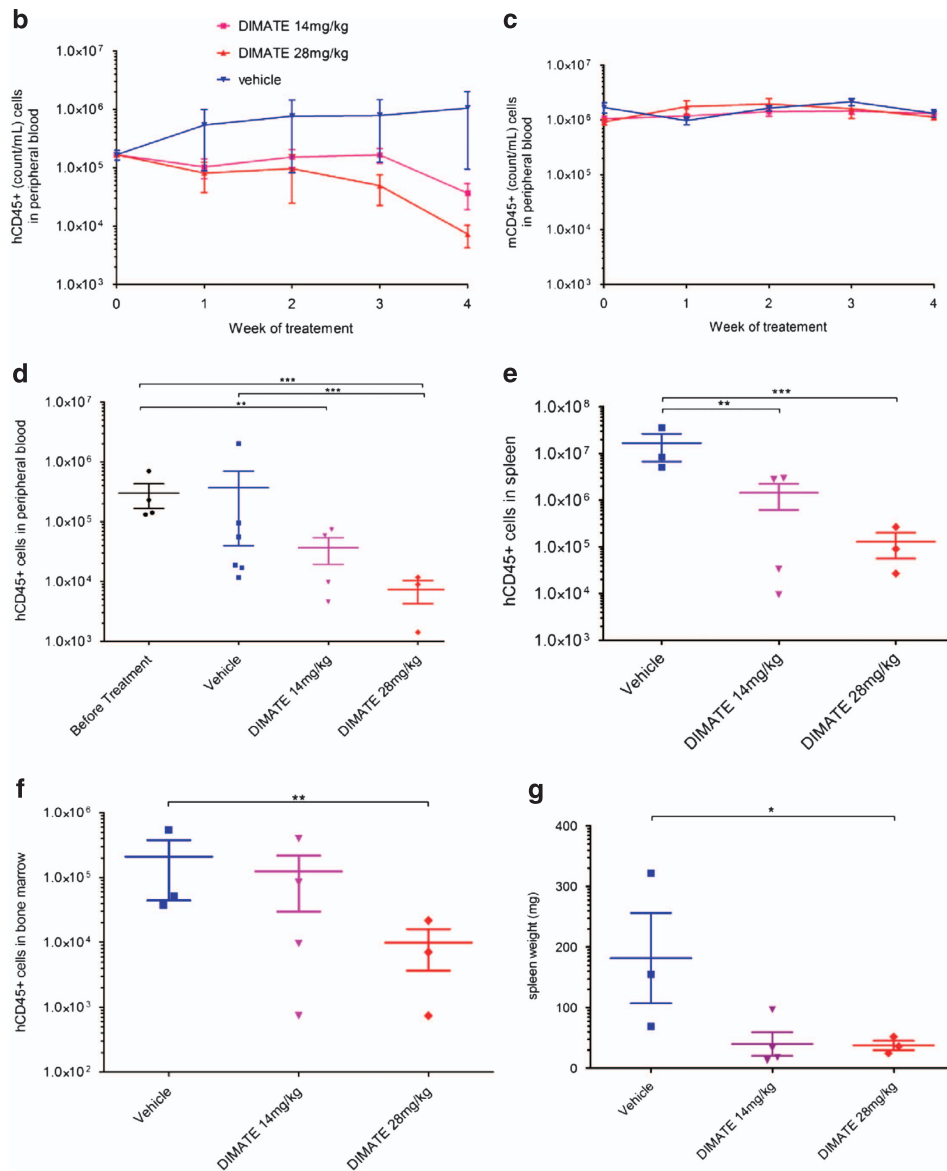


Figure 3. Continued

compared with untreated control mice, infiltration by AML cells decreased from  $2.1 \times 10^5$  (s.e.m.  $\pm 1.7 \times 10^5$ ) to  $1.2 \times 10^5$  (s.e. m.  $\pm 9.3 \times 10^4$ ) in the DIMATE 14 mg/kg group (not significant) and to  $9.8 \times 10^3$  (s.e.m.  $\pm 6.2 \times 10^3$ ) in the DIMATE 28 mg/kg group ( $P < 0.05$ ) (Figure 3f).

## DISCUSSION

Resistance to cytarabine and anthracycline-based chemotherapy is a major cause of treatment failure in AML.<sup>10</sup> More precisely, CD34 +CD38 – leukemic cell population, enriched in LSCs, are highly resistant to these and other conventional chemotherapies.<sup>21</sup> Therefore new therapies are urgently needed for this deadly disease. Furthermore, conventional chemotherapy have similar cytotoxic effects on normal or leukemic HSCs.<sup>21</sup> In sharp contrast, we demonstrated that DIMATE, through ALDH inhibition, targeted and eradicated *in vitro* and *in vivo* several human myeloid leukemia cell lines and human leukemic cells population highly enriched in LSCs, but spared healthy HSCs. Most interestingly, we have determined a therapeutic zone, between 5 and 9  $\mu\text{mol/l}$ ,

where DIMATE eradicated all LSCs (100% of lethality) and showed low toxicity (under 3% of lethality) on healthy HSCs. Moreover, with such treatment concentrations, healthy HSCs retained their self-renewing and multi-lineage differentiation capacity.

ALDH detoxifying enzymes has been extensively associated with a number of malignancies and drug-resistant phenotypes. In the particular case of AML, the ALDH gene family is found upregulated or amplified in 42% of cases, impacting also life expectancy, negatively (Supplementary Figures 2A and B).<sup>22,23</sup> These data suggest that the altered ALDH activity in AML confers advantages for cell proliferation and survival and/or for the progression of the disease. DIMATE is described as an irreversible inhibitor of recombinant ALDH1 and ALDH3. Therefore, we evaluated the capacity of DIMATE to inhibit the ALDH activity in leukemic cells.<sup>18,19</sup>

Selective cytotoxicity of DIMATE on cancer cells of human and murine origin has already been demonstrated *in vitro* on human epithelial cancer cells. Indeed, DIMATE induces an irreversible apoptosis in human prostate epithelial cancer cells DU145, but it is a reversible cytostatic agent on human prostate epithelial normal cells.<sup>18,19</sup> In the specific AML framework, safety of ALDH inhibitor

on healthy HSCs has already been demonstrated, and even more remarkable is the inhibition of ALDH and retinoid signaling induces expansion of human HSCs.<sup>24</sup>

These hypotheses are supported by our experiments in mice. In NOG mice, xenografted with human AML, enriched in LSCs, DIMATE eradicated *in vivo*, specifically, human AML cells (hCD45+) in blood, spleen and bone marrow. In contrast, DIMATE spared healthy circulating mouse cells (mCD45+). Moreover, with a humanization rate of 17%, our mouse model could be optimized, to try to obtain more significant results, in spleen and bone marrow, in particular, in the DIMATE 14 mg/kg treatment group.

With very unusual anti-cancer properties, DIMATE seems to be a very promising molecule for the treatment of AML and cancer more generally. Results from our work open new therapeutic perspectives in AML and provide a conceptual support for initiation of a phase I-II clinical trials.

We conclude that DIMATE is a very promising drug that opens new therapeutic perspectives in myeloid malignancies with putative interest in lymphoid malignancies as this drug is also able to inhibit the anti-apoptotic effect of bcl-2.<sup>18</sup> A limitation of our work concerns the LSC definition. Indeed, in our work, to define LSCs we used the CD34+CD38-ALDH+ phenotype. However, several pathways, specific genes or microRNA, cytometric or transcriptomic signatures have also been proposed to distinguish LSCs from HSCs.<sup>25-28</sup> There is no consensus on an absolute definition for LSCs and it is more correct to speak of 'leukemic cells population enriched in LSCs'. Furthermore, according to some robust experimental works, LSCs could not be a stem cell disorder but rather a reacquisition of stem cell characteristics by classic leukemic cells.<sup>29</sup> Finally, we should not underestimate the role of the bone marrow environment in the leukemogenesis. Indeed, a pathologic bone marrow 'niche' could lead to permanent generation of LSCs.<sup>30-32</sup> Nevertheless, LSCs remain an interesting target for other innovative therapeutic strategies.<sup>33-35</sup> Analysis of DIMATE effect on normal and leukemic bone marrow 'niche' is the next step in our study aiming at a better understanding of the mechanisms of action of this innovative drug.

## CONFLICT OF INTEREST

The authors declare no conflict of interest.

## ACKNOWLEDGEMENTS

We would like to thank INSERM, Aix-Marseille University and the patients who gave their informed consent to the use of their samples for research. We thank Laurence Borge for assistance and the use of the cell culture platform facilities (CRCM U1068, Marseille).

## AUTHOR CONTRIBUTIONS

GV, MP-A and GM have written the paper. GF has synthesized the DIMATE and conducted the QC and release of the compound. FS and PP have provided healthy hematopoietic stem cells. PS and CB have conducted flow cytometry analysis on human leukemic cells. GV, CB and LY have conducted the main experiments. GQ, CN and LF have read and commented on the paper. RTC and IC have designed the protocol study.

## REFERENCES

- 1 Jemal A, Siegel R, Xu J, Ward E. Cancer statistics, 2010. *CA Cancer J Clin* 2010; **60**: 277-300.
- 2 Jemal A, Clegg LX, Ward E, Ries LAG, Wu X, Jamison PM *et al*. Annual report to the nation on the status of cancer, 1975-2001, with a special feature regarding survival. *Cancer* 2004; **101**: 3-27.
- 3 Döhner H, Estey EH, Amadori S, Appelbaum FR, Büchner T, Burnett AK *et al*. Diagnosis and management of acute myeloid leukemia in adults: recommendations from an international expert panel, on behalf of the European LeukemiaNet. *Blood* 2010; **115**: 453-474.

- 4 Cheson BD, Bennett JM, Kopecky KJ, Büchner T, Willman CL, Estey EH *et al*. Revised recommendations of the International Working Group for Diagnosis, Standardization of Response Criteria, Treatment Outcomes, and Reporting Standards for Therapeutic Trials in Acute Myeloid Leukemia. *J Clin Oncol* 2003; **21**: 4642-4649.
- 5 Bonnet D, Dick JE. Human acute myeloid leukemia is organized as a hierarchy that originates from a primitive hematopoietic cell. *Nat Med* 1997; **3**: 730-737.
- 6 Jones RJ, Matsui WH, Smith BD. Cancer stem cells: are we missing the target? *J Natl Cancer Inst* 2004; **96**: 583-585.
- 7 Huff CA, Matsui W, Smith BD, Jones RJ. The paradox of response and survival in cancer therapeutics. *Blood* 2006; **107**: 431-434.
- 8 Zwaan CM, Kaspers GJL. Possibilities for tailored and targeted therapy in paediatric acute myeloid leukaemia. *Br J Haematol* 2004; **127**: 264-279.
- 9 Kaspers GJL, Zwaan CM. Pediatric acute myeloid leukemia: towards high-quality cure of all patients. *Haematologica* 2007; **92**: 1519-1532.
- 10 Burnett A, Wetzler M, Löwenberg B. Therapeutic advances in acute myeloid leukemia. *J Clin Oncol* 2011; **29**: 487-494.
- 11 Lapidot T, Sirard C, Vormoor J, Murdoch B, Hoang T, Caceres-Cortes J *et al*. A cell initiating human acute myeloid leukaemia after transplantation into SCID mice. *Nature* 1994; **367**: 645-648.
- 12 Gerber JM, Smith BD, Ngwang B, Zhang H, Vala MS, Morsberger L *et al*. A clinically relevant population of leukemic CD34+CD38-cells in acute myeloid leukemia. *Blood* 2012; **119**: 3571-3577.
- 13 Hoang VT, Hoffmann I, Borowski K, Zepeda-Moreno A, Ran D, Buss EC *et al*. Identification and separation of normal hematopoietic stem cells and leukemia stem cells from patients with acute myeloid leukemia. *Methods Mol Biol Clifton NJ* 2013; **1035**: 217-230.
- 14 Hoang VT, Buss EC, Wang W, Hoffmann I, Raffel S, Zepeda-Moreno A *et al*. The rarity of ALDH(+) cells is the key to separation of normal versus leukemia stem cells by ALDH activity in AML patients. *Int J Cancer* 2015; **137**: 525-536.
- 15 Storms RW, Trujillo AP, Springer JB, Shah L, Colvin OM, Ludeman SM *et al*. Isolation of primitive human hematopoietic progenitors on the basis of aldehyde dehydrogenase activity. *Proc Natl Acad Sci USA* 1999; **96**: 9118-9123.
- 16 Hess DA, Meyerrose TE, Wirthlin L, Craft TP, Herrbrich PE, Creer MH *et al*. Functional characterization of highly purified human hematopoietic repopulating cells isolated according to aldehyde dehydrogenase activity. *Blood* 2004; **104**: 1648-1655.
- 17 Fournet G, Martin G, Quash G.  $\alpha,\beta$ -Acetylenic amino thiolester inhibitors of aldehyde dehydrogenases 1&3: suppressors of apoptogenic aldehyde oxidation and activators of apoptosis. *Curr Med Chem* 2013; **20**: 527-533.
- 18 Canuto RA, Muzio G, Salvo RA, Maggiora M, Trombetta A, Chantepie J *et al*. The effect of a novel irreversible inhibitor of aldehyde dehydrogenases 1 and 3 on tumour cell growth and death. *Chem Biol Interact* 2001; **130-132**: 209-218.
- 19 Quash G, Fournet G, Courvoisier C, Martinez RM, Chantepie J, Paret MJ *et al*. Aldehyde dehydrogenase inhibitors: alpha,beta-acetylenic N-substituted aminothiolesters are reversible growth inhibitors of normal epithelial but irreversible apoptogens for cancer epithelial cells from human prostate in culture. *Eur J Med Chem* 2008; **43**: 906-916.
- 20 Roch AM, Quash G, Michal Y, Chantepie J, Chantegrel B, Deshayes C *et al*. Altered methional homeostasis is associated with decreased apoptosis in BAF3 bcl2 murine lymphoid cells. *Biochem J* 1996; **313**(Pt 3): 973-981.
- 21 Costello RT, Mallet F, Gaugler B, Sainty D, Arnoulet C, Gastaut J-A *et al*. Human acute myeloid leukemia CD34+/CD38- progenitor cells have decreased sensitivity to chemotherapy and Fas-induced apoptosis, reduced immunogenicity, and impaired dendritic cell transformation capacities. *Cancer Res* 2000; **60**: 4403-4411.
- 22 Gao J, Aksoy BA, Dogrusoz U, Dresdner G, Gross B, Sumer SO *et al*. Integrative analysis of complex cancer genomics and clinical profiles using the cBioPortal. *Sci Signal* 2013; **6**: p11.
- 23 Cerami E, Gao J, Dogrusoz U, Gross BE, Sumer SO, Aksoy BA *et al*. The cBio cancer genomics portal: an open platform for exploring multidimensional cancer genomics data. *Cancer Discov* 2012; **2**: 401-404.
- 24 Chute JP, Muramoto GG, Whitesides J, Colvin M, Safi R, Chao NJ *et al*. Inhibition of aldehyde dehydrogenase and retinoid signaling induces the expansion of human hematopoietic stem cells. *Proc Natl Acad Sci USA* 2006; **103**: 11707-11712.
- 25 Yilmaz OH, Valdez R, Theisen BK, Guo W, Ferguson DO, Wu H *et al*. Pten dependence distinguishes haematopoietic stem cells from leukaemia-initiating cells. *Nature* 2006; **441**: 475-482.
- 26 So CW, Karsunky H, Passegué E, Cozzio A, Weissman IL, Cleary ML. MLL-GAS7 transforms multipotent hematopoietic progenitors and induces mixed lineage leukemias in mice. *Cancer Cell* 2003; **3**: 161-171.
- 27 Gal H, Amariglio N, Trakhtenbrot L, Jacob-Hirsch J, Margalit O, Avigdor A *et al*. Gene expression profiles of AML derived stem cells; similarity to hematopoietic stem cells. *Leukemia* 2006; **20**: 2147-2154.



- 28 Lechman ER, Gentner B, Ng SWK, Schoof EM, van Galen P, Kennedy JA *et al*. miR-126 Regulates distinct self-renewal outcomes in normal and malignant hematopoietic stem cells. *Cancer Cell* 2016; **29**: 602–606.
- 29 Passequé E, Jamieson CHM, Ailles LE, Weissman IL. Normal and leukemic hematopoiesis: are leukemias a stem cell disorder or a reacquisition of stem cell characteristics? *Proc Natl Acad Sci USA* 2003; **100**(Suppl 1): 11842–11849.
- 30 Raaijmakers MHGP, Mukherjee S, Guo S, Zhang S, Kobayashi T, Schoonmaker JA *et al*. Bone progenitor dysfunction induces myelodysplasia and secondary leukaemia. *Nature* 2010; **464**: 852–857.
- 31 Kode A, Manavalan JS, Mosialou I, Bhagat G, Rathinam CV, Luo N *et al*. Leukemogenesis induced by an activating  $\beta$ -catenin mutation in osteoblasts. *Nature* 2014; **506**: 240–244.
- 32 Wang L, Zhang H, Rodriguez S, Cao L, Parish J, Mumaw C *et al*. Notch-dependent repression of miR-155 in the bone marrow niche regulates hematopoiesis in an NF- $\kappa$ B-dependent manner. *Cell Stem Cell* 2014; **15**: 51–65.
- 33 Etchin J, Montero J, Berezovskaya A, Le BT, Kentsis A, Christie AL *et al*. Activity of a selective inhibitor of nuclear export, selinexor (KPT-330), against AML-initiating cells engrafted into immunosuppressed NSG mice. *Leukemia* 2016; **30**: 190–199.
- 34 Schinke C, Giricz O, Li W, Shastri A, Gordon S, BarreYRO L *et al*. IL8-CXCR2 pathway inhibition as a therapeutic strategy against MDS and AML stem cells. *Blood* 2015; **125**: 3144–3152.
- 35 Prost S, Relouzat F, Spentchian M, Ouzegdouh Y, Saliba J, Massonnet G *et al*. Erosion of the chronic myeloid leukaemia stem cell pool by PPAR $\gamma$  agonists. *Nature* 2015; **525**: 380–383.



This work is licensed under a Creative Commons Attribution 4.0 International License. The images or other third party material in this article are included in the article's Creative Commons license, unless indicated otherwise in the credit line; if the material is not included under the Creative Commons license, users will need to obtain permission from the license holder to reproduce the material. To view a copy of this license, visit <http://creativecommons.org/licenses/by/4.0/>

© The Author(s) 2016

Supplementary Information accompanies this paper on *Blood Cancer Journal* website (<http://www.nature.com/bcj>)