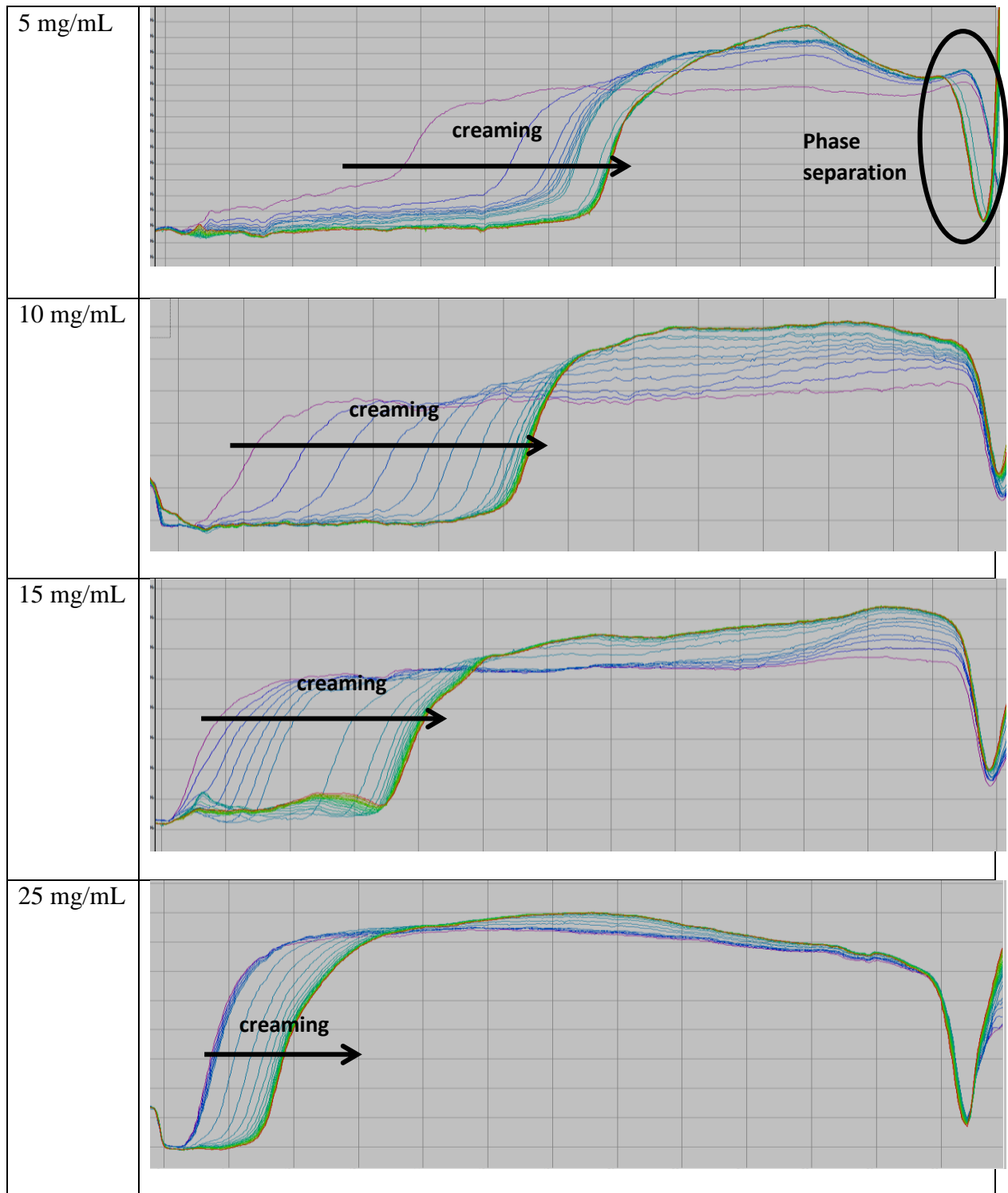


## Supporting information

1

2

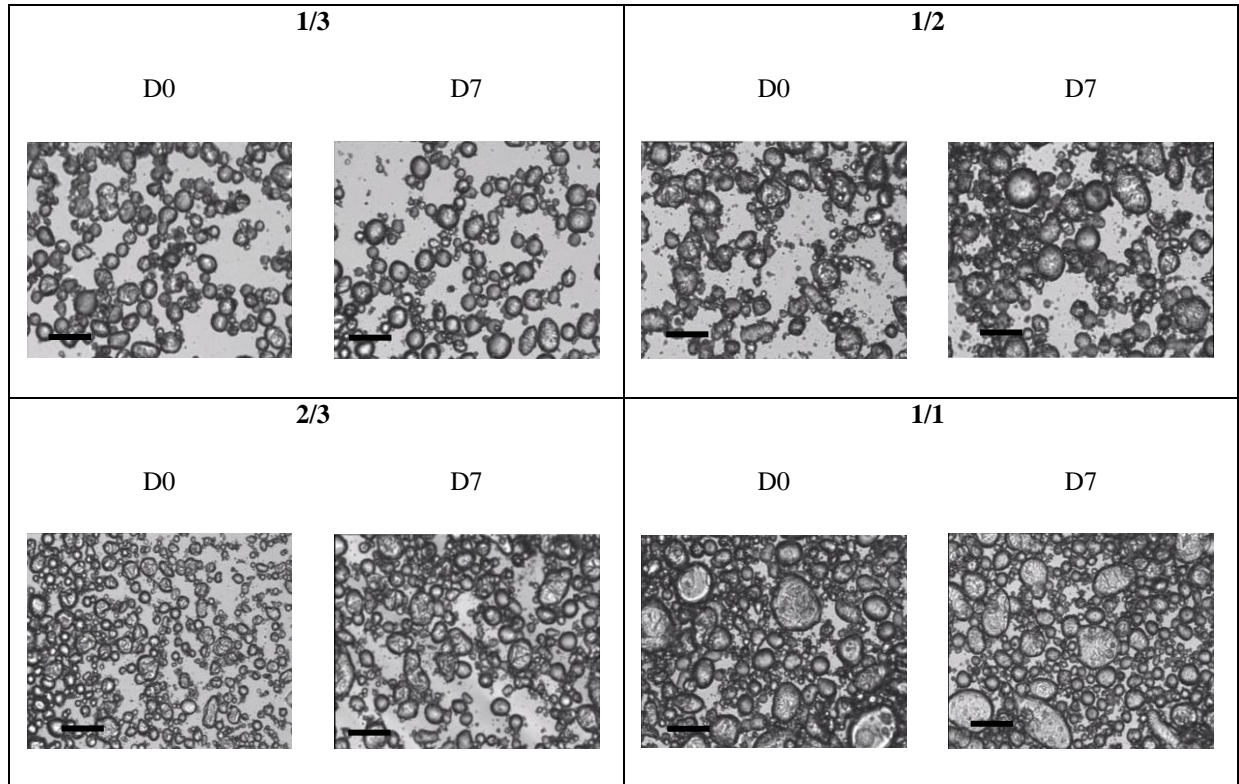
3 **Figure S1.** Turbiscan analysis over 24h of the W/O Lipiodol Pickering-emulsions with  
4 different ratios NPs concentrations at a W/O ratio of 3/1



5

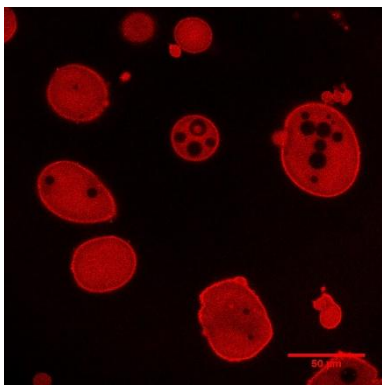
6 **Figure S2.** Optical microscopy of the W/O Lipiodol Pickering-emulsions at a NPs  
7 concentration of 15 mg/mL with different water/oil ratios at D0 and D7 (scale bar = 100  $\mu$ m).

8



9

10 **Figure S3.** Confocal images of 1/1 emulsion

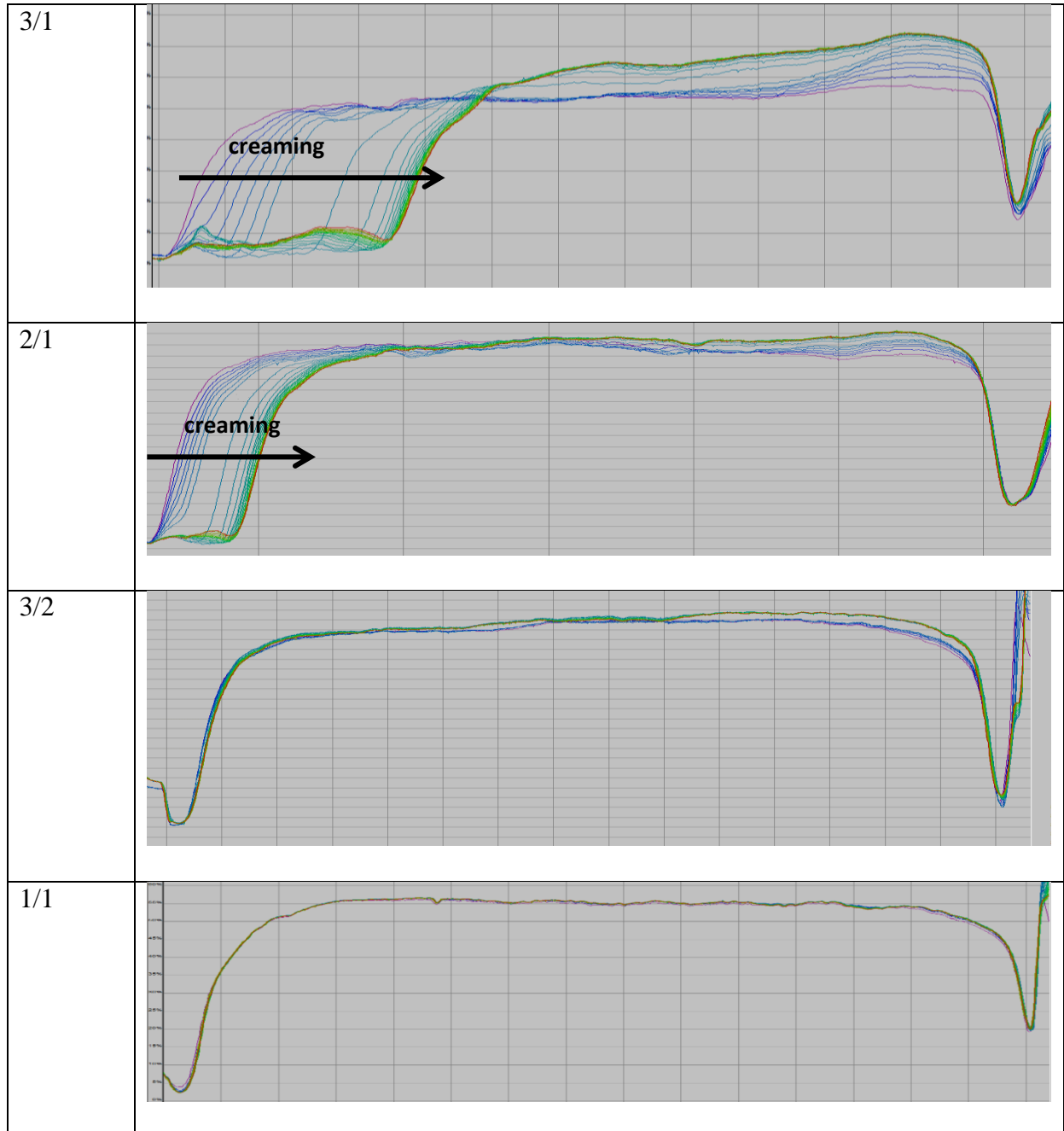


11

12

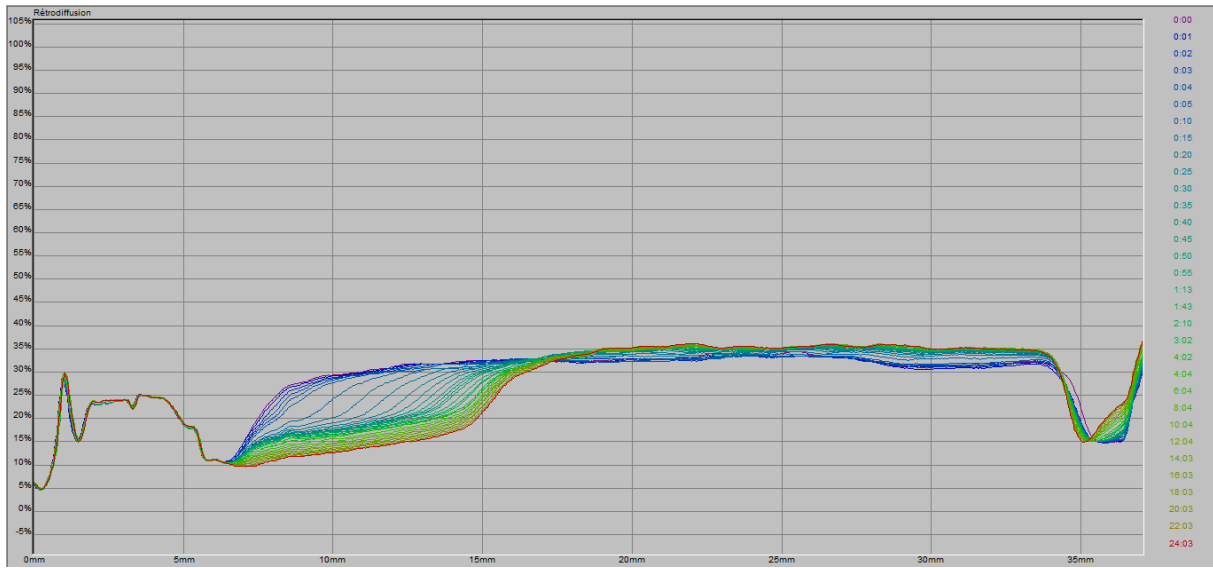
13

14 **Figure S4.** Turbiscan analysis over 24h of the W/O Lipiodol Pickering-emulsions with  
15 different ratios at a NPs concentration of 15mg/mL.



16

17 **Figure S5.** Turbiscan analysis over 24h of the W/O doxorubicin loaded emulsion (W/O = 1/3,  
18 [NPs] = 15 mg/mL, [doxorubicin] = 20 mg/mL).

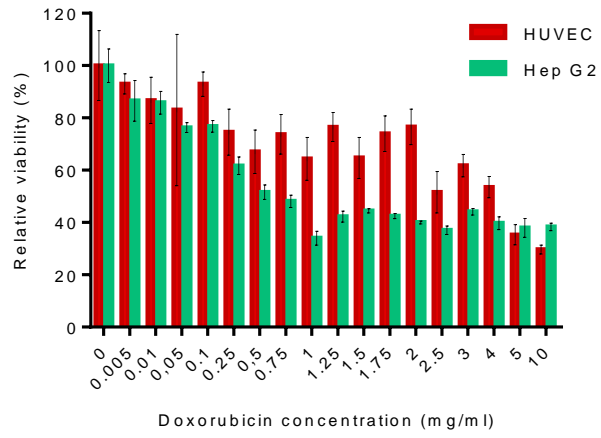


19

20

21

22 **Figure S6.** Viability assays on Hep G2 and HUVEC cell lines after 48h incubation with  
23 doxorubicin of increasing concentrations.



24

25