



HAL
open science

Investigating inter-speaker convergence through phonetic microvariation in paired data

Florent Chevalier

► **To cite this version:**

Florent Chevalier. Investigating inter-speaker convergence through phonetic microvariation in paired data. GULP Lablunch, Oct 2019, Glasgow, United Kingdom. hal-02321702

HAL Id: hal-02321702

<https://hal.science/hal-02321702>

Submitted on 21 Oct 2019

HAL is a multi-disciplinary open access archive for the deposit and dissemination of scientific research documents, whether they are published or not. The documents may come from teaching and research institutions in France or abroad, or from public or private research centers.

L'archive ouverte pluridisciplinaire **HAL**, est destinée au dépôt et à la diffusion de documents scientifiques de niveau recherche, publiés ou non, émanant des établissements d'enseignement et de recherche français ou étrangers, des laboratoires publics ou privés.

Investigating inter-speaker convergence through phonetic microvariation in paired data

GULP Lablunch

3rd October 2019

Florent Chevalier

florent.chevalier@univ-poitiers.fr



“Des savoirs & des talents”



TALK OUTLINE

- The project
- The quest for a convergence measuring method
- First attempt at GAMMs
- What's next?



I – The project

PhD project: context, theoretical background and method



I – PROJECT : CONTEXT & BACKGROUND

PhD project (2017-2020):

- ***De la convergence interlocuteur au changement phonétique : accommodation linguistique et changement phonétique de l'anglais parlé à Glasgow***
- Jointly supervised by Sylvie Hanote (Poitiers) and Jane Stuart-Smith (Glasgow)
- Funded by the French Ministry for Higher Education, Research and Innovation



MINISTÈRE
DE L'ENSEIGNEMENT SUPÉRIEUR,
DE LA RECHERCHE
ET DE L'INNOVATION

I – PROJECT : CONTEXT & BACKGROUND

- How do we look at sound change in progress?
- We traditionally use aggregates for each speaker, and compare speakers according to their age/gender/etc.



I – PROJECT : CONTEXT & BACKGROUND

- How do we look at sound change in progress?
- We traditionally use aggregates for each speaker, and compare speakers according to their age/gender/etc.
- **True story:** each speaker's phonetic production is actually quite variable (Cukor-Avila & Bailey 2013).
- Can this constant microvariation relate to sound change?



I – PROJECT : CONTEXT & BACKGROUND

- Short-term inter-speaker accommodation (Giles & Smith 1979) is thought to be the starting point of long-term community-level sound change (Trudgill 1986).
- We know about short-term (Pardo 2013) and medium-term (Sonderegger 2012) speech accommodation.



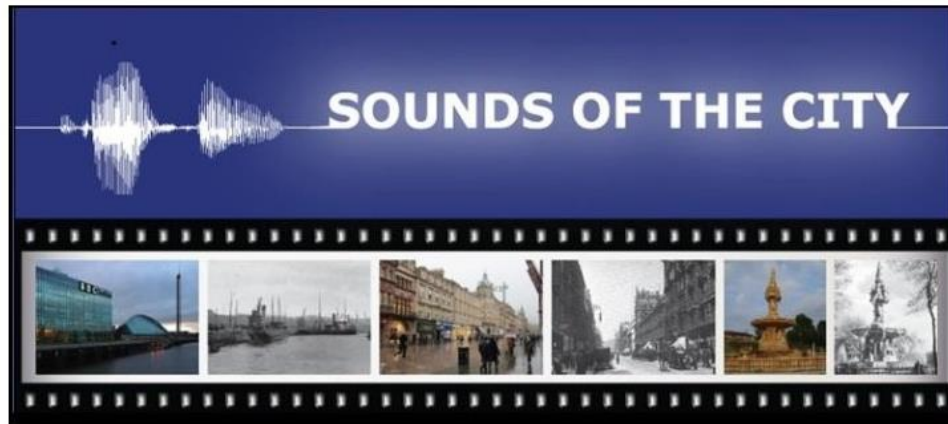
I – PROJECT : CONTEXT & BACKGROUND

Main research questions:

- Which **patterns of speech accommodation** can be identified/distinguished in spontaneous speech?
- How does accommodation within speakers in the **short term** relate to sound change in the **long term**?
- How is phonetic convergence constrained by **linguistic, social** and **situational** factors?



I – PROJECT : METHOD



Fine phonetic variation and sound change: A real-time study of Glaswegian

<http://soundsofthecity.arts.gla.ac.uk/>

Oct 2011-Sept 2014



The Leverhulme Trust

Decade of Recording	Old 67-90 (Decade of Birth)	Middle-aged 40-55 (Decade of Birth)	Young 10-17 (Decade of Birth)
1970s	4 f, 6 m (1890s)	7 f, 7 m (1920s)	4 f, 8 m (1960s)
1980s	6 f, 6 m (1900s)	4 f, 12 m (1930s)	2 f, 5 m (1970s)
1990s	6 f, 6 m (1910s)	6 f, 6 m (1940s)	6 f, 6 m (1980s)
2000s	6 f, 6 m (1920s)	6 f, 5 m (1950s)	6 f, 6 m (1990s)

Table 1: Real- and apparent-time structure of the main Glasgow corpus; an additional 6 speakers born in the 1890s and recorded in 1916/17 are also available. Recordings are predominantly of unprepared spontaneous speech from sociolinguistic surveys, oral histories and broadcast media.

Three variables of interest:

Variable	Type of variable	Consciousness
Vowel quality (F1 & F2)	Segmental	Above
Vowel length (SVLR)	Segmental	Below
Speech rate	Suprasegmental	Above

- F1, F2 and vowel length extracted with LaBB-CAT/ISCAN for all lexically stressed tokens



Three variables of interest:

- Variation monitored for each speaker within conversation to measure short-term accommodation
- ‘Traditional’ Imer modelling used across the whole corpus to account for broader real and apparent time variation
- Trajectories, rate and speed of variation within minutes will be compared to change over time



Three variables of interest:

- Variation monitored for each speaker within conversation to measure short-term accommodation ... ***But how?***



II – How did people look at convergence?

So much methodz



II – ON HOW TO MEASURE CONVERGENCE

- **Euclidian distances** (Babel 2009, Ruch 2015)



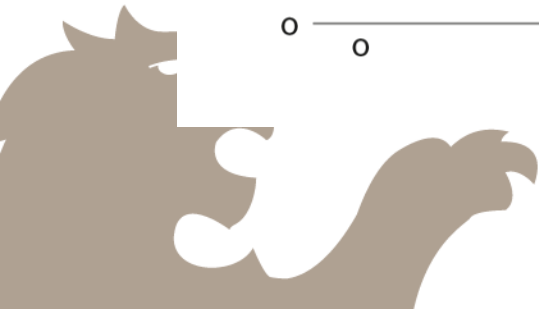
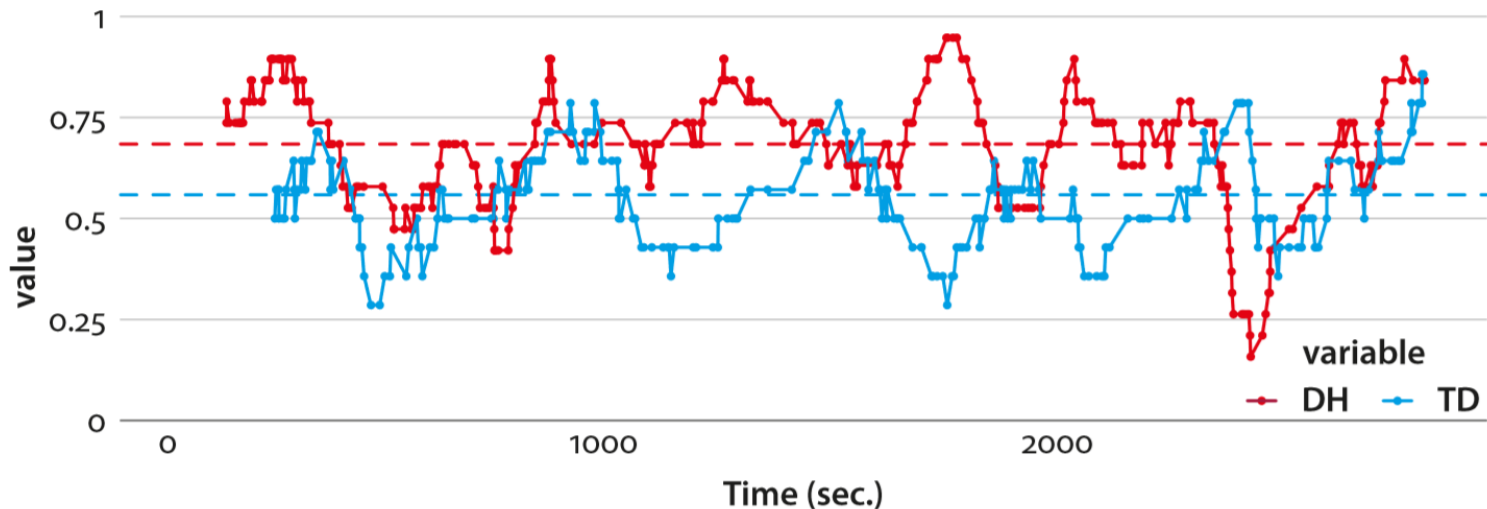
II – ON HOW TO MEASURE CONVERGENCE

- Euclidian distances (Babel 2009, Ruch 2015)
- **Discriminant analysis** (Delvaux & Soquet 2007)



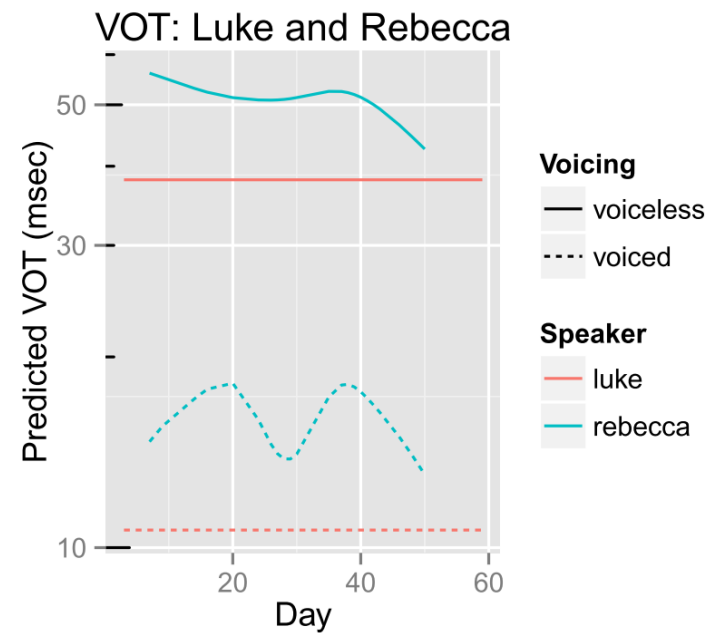
II – ON HOW TO MEASURE CONVERGENCE

- Euclidian distances (Babel 2009, Ruch 2015)
- Discriminant analysis (Delvaux & Soquet 2007)
- **Moving averages** (Tamminga *et al.* 2016)



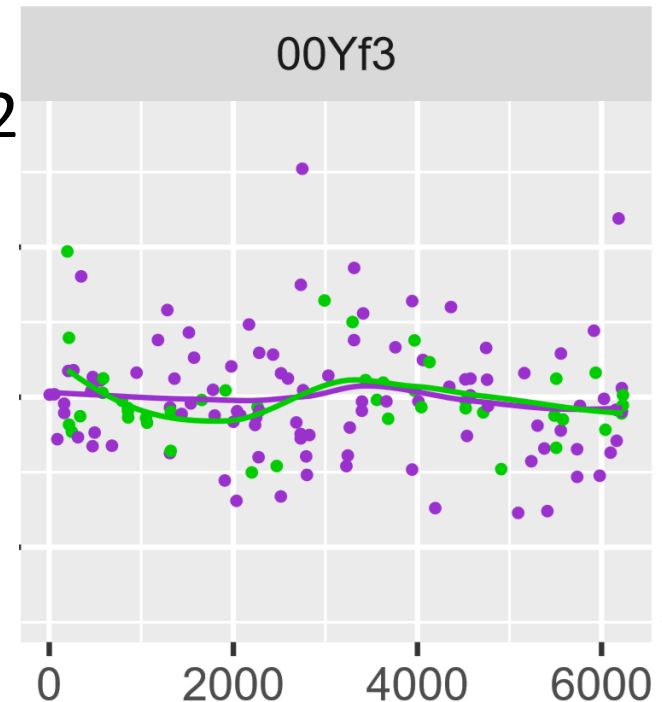
II – ON HOW TO MEASURE CONVERGENCE

- Euclidian distances (Babel 2009, Ruch 2015)
- Discriminant analysis (Delvaux & Soquet 2007)
- Moving averages (Tamminga *et al.*)
- **GAMMs** (Sonderegger *et al.* 2017, Solanki 2017)



II – ON HOW TO MEASURE CONVERGENCE

- Euclidian distances (Babel 2009, Ruch 2015)
- Discriminant analysis (Delvaux & Soquet 2007)
- Moving averages (Tamminga *et al.* 2016)
- GAMMs (Sonderegger *et al.* 2017, Solanki 2017)
- **Residuals linear plotting**
(Alexander 2018, Chevalier 2018)



II – ON HOW TO MEASURE CONVERGENCE

- Back to GAMMs!
- Allows a dynamic perspective into time as a factor (unlike ED and DA)
- Allows controlling for factors in the modelling (unlike ED, DA and MA)
- Allows to measure the difference between smooths (unlike everything else?)



III – Applying GAMMs

And getting colourful plots



III – APPLYING GAMMS

- Corpus used: all peer-to-peer conversations in the corpus, i.e. 19 pairs or 38 speakers

	90	00
M	4 F + 4 M	6 F + 4 M
Y	4 F + 4 M	6 F + 6 M

- Speech rate deviation, vowel duration for all monophthongs, vowel quality for *FLEECE*, *BOOT*, *COT*



III – APPLYING GAMMS

- Basic model run using the ***mgcv*** package in R (v3.6.1):
*bam(dependent variable ~ fixed or random effects
+ s(time, by = speaker)*
- Plotting using ***itsadug***



III – APPLYING GAMMS

- Basic model run using the ***mgcv*** package in R (v3.6.1):
bam(dependent variable ~ fixed or random effects + s(time, by = speaker)
- Plotting using ***itsadug***

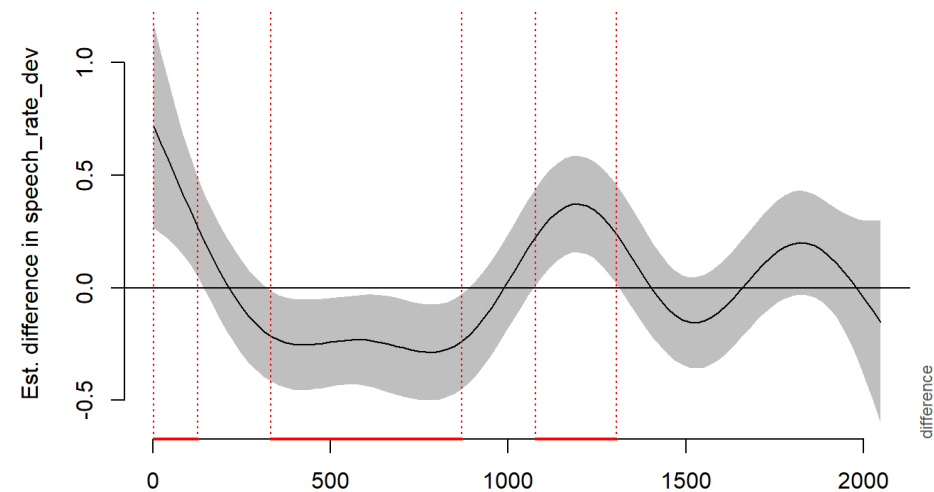
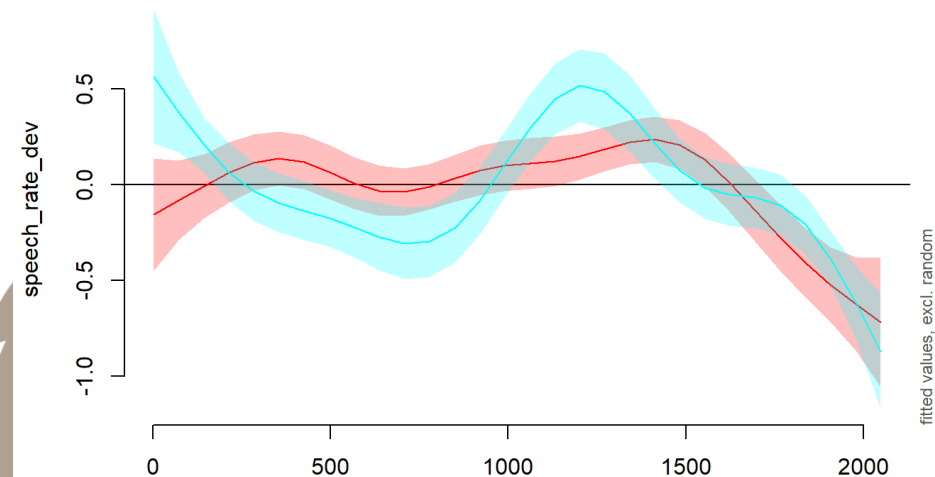
example for speech rate deviation, pair 00Mf1

plot_smooth

00-M-f01
00-M-f02

plot_diff

Difference 00-M-f02 - 00-M-f01



1) Speech rate (deviation in syll/sec)

- *bam(speech_rate_dev ~
s(phone_begin, by = speaker_name), data = pair)*
- A **lot** of wigglyness within speakers
- **All** pairs have periods of significant difference between speakers



2) Vowel duration (in ms, log)

- *bam(phone_logdurms ~ phone_label + follseg + nsyl + speech_rate_dev + logfreq + s(phone_begin, by = speaker_name), data = pair)*
- There is variation within speakers but not as spiky as in speech rate
- **Most** pairs have periods of significant difference between speakers (13 pairs out of 19)



3) F1 and F2 (one model per formant per vowel per pair; formant values have been Lobanov-normalized)

- *bam(F2.normr ~ Preceding.POA + Following.POA + Target.duration.ms + s(phone_begin, by = speaker_name), data = pairvowel)*
- There is some variation within speakers but very smooth
- Models were only run for 3 pairs (=18 models!):
no consistence in significant difference periods in formant values within pairs

III – APPLYING GAMMS

Focus on three pairs:

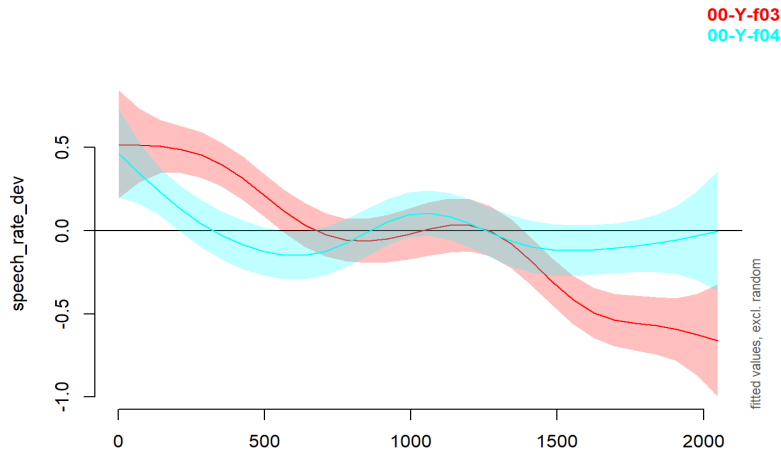
- **00Yf3**: overlapping periods of significant difference between speakers in speech rate and vowel duration
- **90Ym1**: non-matching periods of significant difference between speakers in speech rate and vowel duration
- **00Mf2**: no difference between speakers in vowel duration but periods of significant difference in speech rate



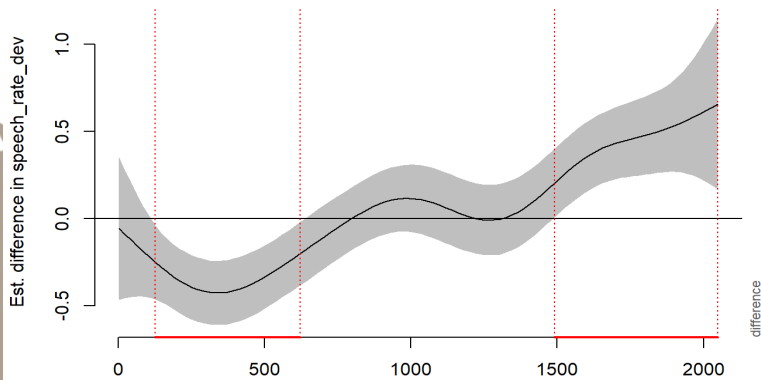
III – APPLYING GAMMS

➤ Interaction 00Yf3 (overlapping divergence periods)

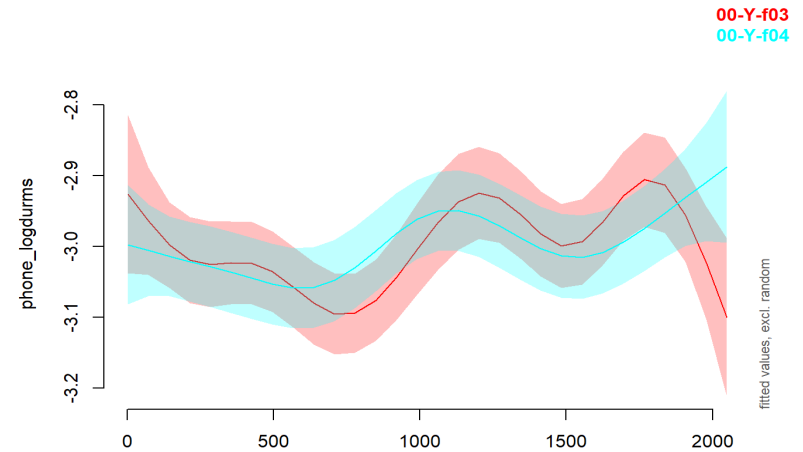
Speech rate variation



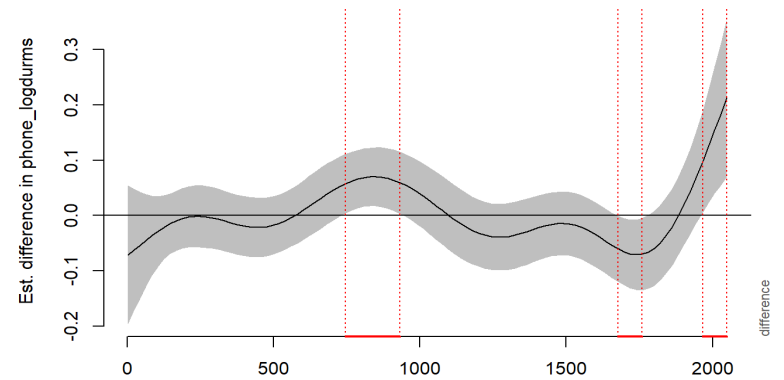
Difference 00-Y-f04 - 00-Y-f03



Vowel length variation



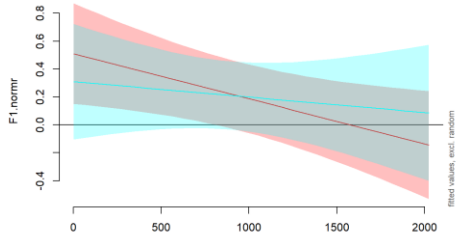
Difference 00-Y-f04 - 00-Y-f03



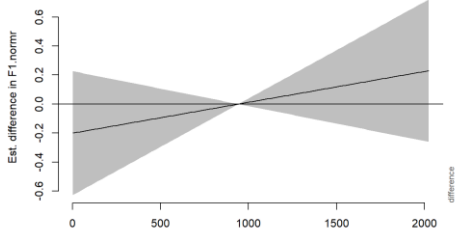
III – APPLYING GAMMS

FLEECE (F1 and F2)

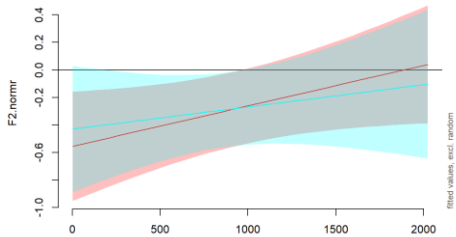
00-Y-f03
00-Y-f04



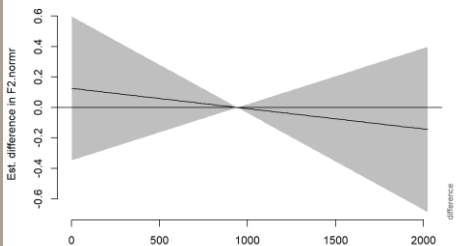
Difference 00-Y-f04 - 00-Y-f03



00-Y-f03
00-Y-f04

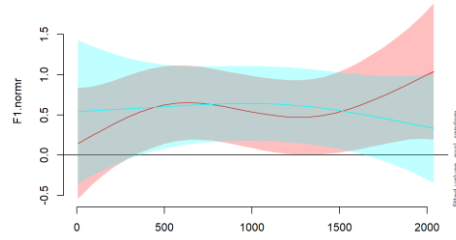


Difference 00-Y-f04 - 00-Y-f03

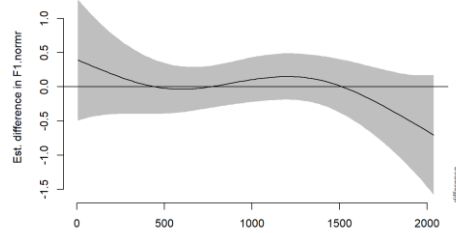


BOOT (F1 and F2)

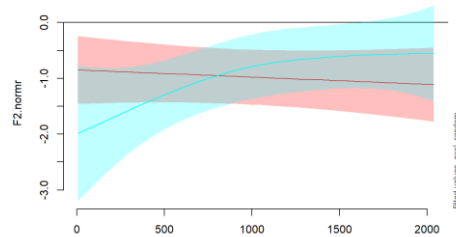
00-Y-f03
00-Y-f04



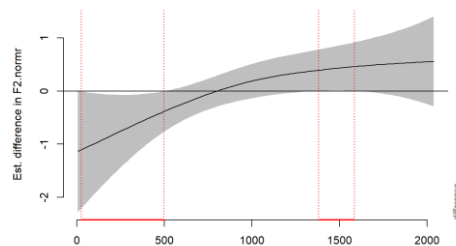
Difference 00-Y-f04 - 00-Y-f03



00-Y-f03
00-Y-f04

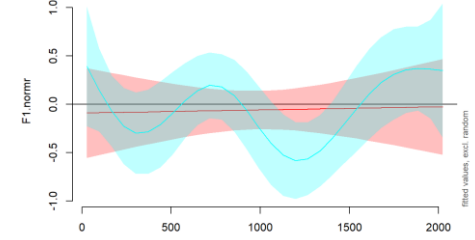


Difference 00-Y-f04 - 00-Y-f03

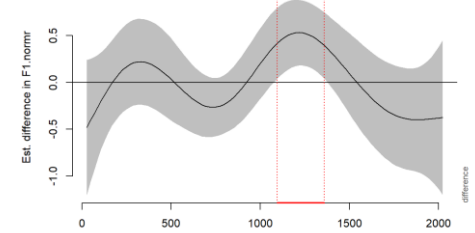


COT (F1 and F2)

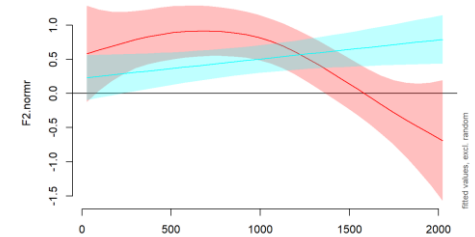
00-Y-f04
00-Y-f03



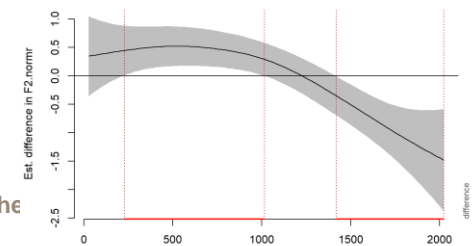
Difference 00-Y-f04 - 00-Y-f03



00-Y-f04
00-Y-f03



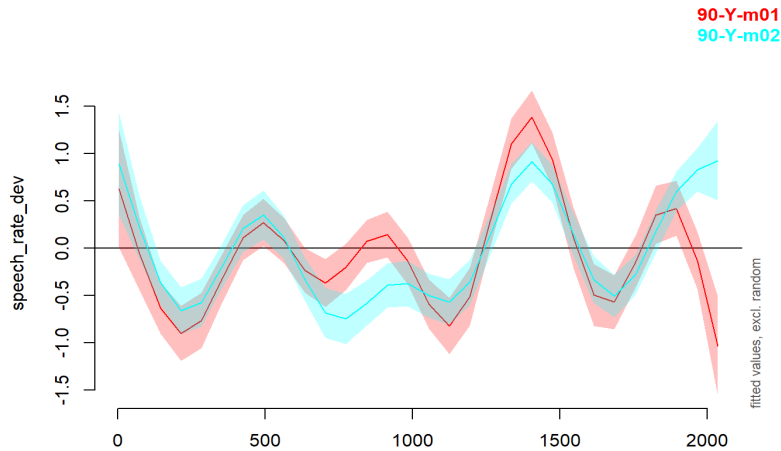
Difference 00-Y-f04 - 00-Y-f03



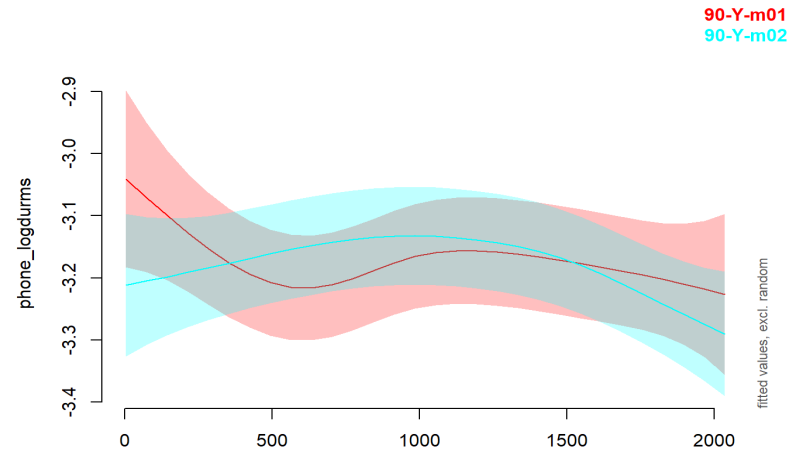
III – APPLYING GAMMS

➤ Interaction 90Ym1 (non-matching divergence periods)

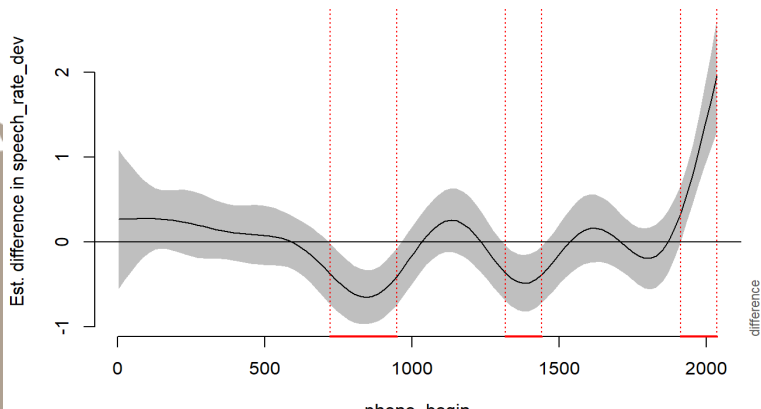
Speech rate variation



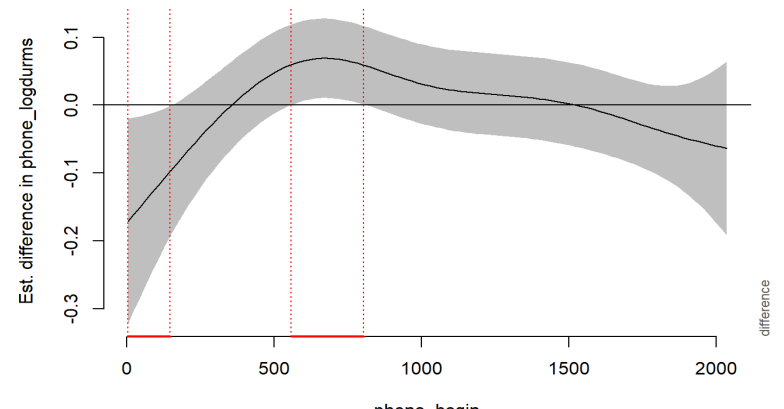
Vowel length variation



Difference 90-Y-m02 - 90-Y-m01



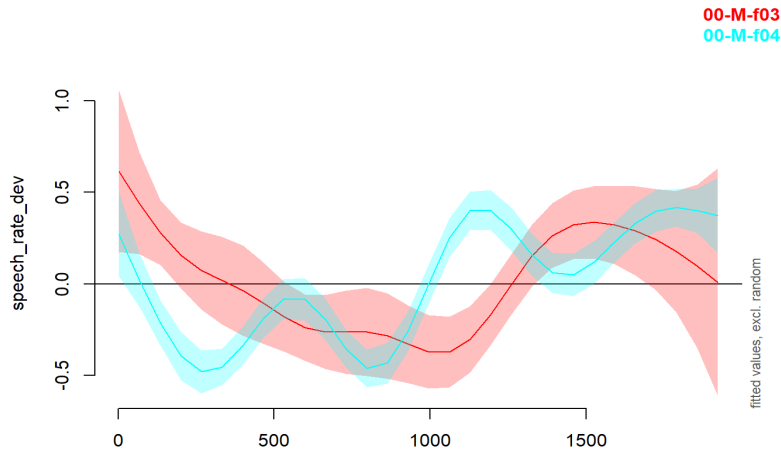
Difference 90-Y-m02 - 90-Y-m01



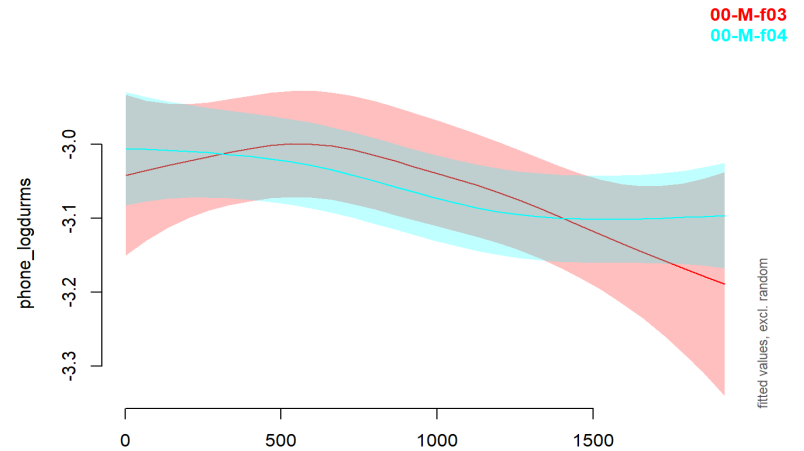
III – APPLYING GAMMS

➤ Interaction 00Yf3 (differences in speech rate only)

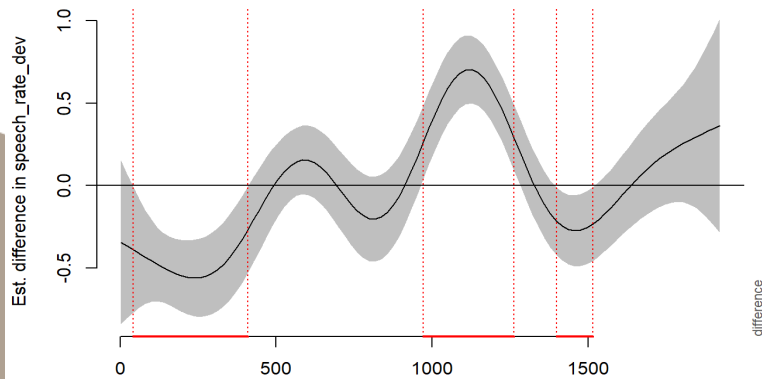
Speech rate variation



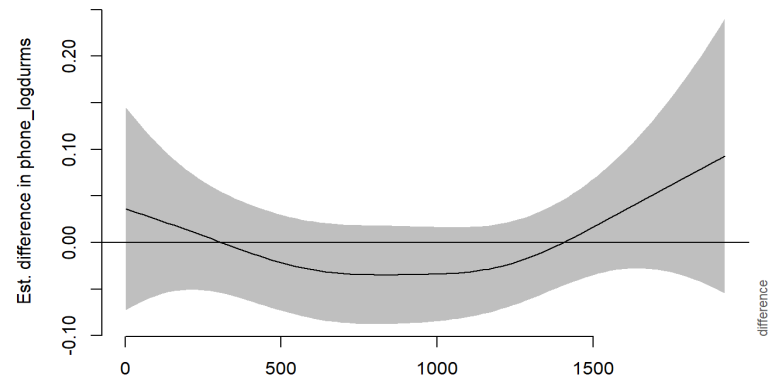
Vowel length variation



Difference 00-M-f04 - 00-M-f03



Difference 00-M-f04 - 00-M-f03



III – APPLYING GAMMS

What conclusions can be drawn from this?

- Various variables vary in a more varied way than others
- Divergence/convergence between for speakers for one variable doesn't mean divergence/convergence for other variables



IV – What's next?

Help, I'm in my last year



IV – INTO THE FUTURE

- Take a step back and look at the whole dataset together
- Two options here:
 - Treat pairs as a random factor to compare microvariation trajectories by social factors (age, gender);
 - or actually base the analysis of convergence/divergence patterns on pairs themselves?



IV – INTO THE FUTURE

- Extracting the whole corpus with ISCAN
- Adding other types of conversations, more interesting, more relevant, more promising, more harder
- Include additional factors and information for further quantitative and qualitative analysis



IV – INTO THE FUTURE

- Write a thesis about all this





**Thank you for
listening!**

** roars **



REFERENCES

- Alexander, C. (2018). *Recovering the dynamics of talk: tracking temporal dependence in multilevel models for speech*. Doctoral dissertation, University of Glasgow.
- Chevalier, F. (2018). D'une seconde à un siècle : de l'innovation au changement phonétique à Glasgow. *50 ans de linguistique sur corpus oraux : apports à l'étude de la variation*, Université d'Orléans, 15-17 novembre 2018.
- Babel, M. E. (2009). *Phonetic and social selectivity in speech accommodation*. Doctoral dissertation, University of California.
- Cukor-Avila, P. and Bailey, G. (2013). Real time and apparent time. In Chambers, J. and Schilling, N., (ed.), *The Handbook of Language Variation and Change*, 237–262. Wiley, second edition.
- Delvaux, V. & Soquet, A. (2007). The influence of ambient speech on adult speech productions through unintentional imitation. *Phonetica*, 64(2-3), 145-173.
- Giles, H., & Smith, Ph. (1979). Accommodation Theory: Optimal Levels of Convergence, in. Giles, H. & St-Clair, R. N. (eds.) *Language and Social Psychology*. Baltimore, Basil Blackwell, 45-65.
- Pardo, J. (2013). Measuring phonetic convergence in speech production. *Frontiers in Psychology*, 4(AUG), [Article 559].
- Ruch, H. (2015). Vowel convergence and divergence between two Swiss German dialects. *18th International Congress of Phonetic Sciences*, Glasgow, UK, 10 August 2015 - 14 August 2015.
- Solanki, V. (2017). *Brains in dialogue: Investigating accommodation in live conversational speech for both speech and EEG data*. Doctoral dissertation, University of Glasgow.
- Sonderegger, M. (2012). *Phonetic and phonological dynamics on reality television*. Doctoral dissertation, University of Chicago.
- Sonderegger, M., Bane, M. & Graff, P. (2017). The medium-term dynamics of accents on reality television. *Language*, 93(03), 598-640.
- Tamminga, M., MacKenzie, L., & Embick, D. (2016). The dynamics of variation in individuals. *Linguistic Variation*, 16(2), 300-336.
- Trudgill, P. (1986). *Dialects in contact*. Blackwell, Oxford.