



A millennium-long reconstruction of damaging hydrological events across Italy

Nazzareno Diodato, Fredrik Charpentier Ljungqvist, Gianni Bellocchi

► To cite this version:

Nazzareno Diodato, Fredrik Charpentier Ljungqvist, Gianni Bellocchi. A millennium-long reconstruction of damaging hydrological events across Italy. Scientific Reports, 2019, 9 (1), 10.1038/s41598-019-46207-7 . hal-02320563

HAL Id: hal-02320563

<https://hal.science/hal-02320563>

Submitted on 18 Oct 2019

HAL is a multi-disciplinary open access archive for the deposit and dissemination of scientific research documents, whether they are published or not. The documents may come from teaching and research institutions in France or abroad, or from public or private research centers.

L'archive ouverte pluridisciplinaire **HAL**, est destinée au dépôt et à la diffusion de documents scientifiques de niveau recherche, publiés ou non, émanant des établissements d'enseignement et de recherche français ou étrangers, des laboratoires publics ou privés.



Distributed under a Creative Commons Attribution 4.0 International License

SCIENTIFIC REPORTS

OPEN

A millennium-long reconstruction of damaging hydrological events across Italy

Nazzareno Diodato¹, Fredrik Charpentier Ljungqvist^{2,3,4} & Gianni Bellocchi^{1,5}

Damaging hydrological events are extreme phenomena with potentially severe impacts on human societies. Here, we present the hitherto longest reconstruction of damaging hydrological events for Italy, and for the whole Mediterranean region, revealing 674 such events over the period 800–2017. For any given year, we established a severity index based on information in historical documentary records, facilitating the transformation of the data into a continuous time-series. Episodes of hydrological extremes disrupted ecosystems during the more severe events by changing landforms. The frequency and severity of damaging hydrological events across Italy were likely influenced by the mode of the Atlantic Multidecadal Variability (AMV), with relatively few events during the warm Medieval Climate Anomaly dominated by a positive phase of the AMV. More frequent and heavier storms prevailed during the cold Little Ice Age, dominated by a more negative phase of the AMV. Since the mid-19th century, a decreasing occurrence of exceptional hydrological events is evident, especially during the most recent decades, but this decrease is not yet unprecedented in the context of the past twelve centuries.

Both climate model simulations and physical theory suggest that precipitation patterns will change with global warming and, broadly, confirm to the “wet-gets-wetter and dry-gets-drier” paradigm^{1,2}. In reality, temperature–hydroclimate relationships increasingly appear to be more complicated and spatially more heterogeneous than this simplistic pattern^{3–6}. At the same time, palaeoclimate proxy reconstructions have revealed that recent hydroclimate changes are not yet unprecedented in the context of the past one to two millennia^{7–10}. Still, many regions have experienced an increase during recent decades in daily and/or hourly precipitation extremes and thus an increased flood risk^{11–13}. Natural palaeoclimate proxy archives are lacking the temporal resolution necessary to resolve such events. Thus, it is unknown if the recent increase in daily and/or hourly precipitation extremes is unprecedented or not in a long-term context. Moreover, the lack of such data has made it challenging to assess the long-term relationships between temperature changes and changes in daily or hourly precipitation extremes.

Historical documentary data, from regions where long such archives are available, offer a unique possibility to reconstruct past climate events down to a daily or even hourly basis¹⁴. Reconstructions from such documentary archives of past precipitation extremes are important for the understanding of the variability and changes of floods and landslides, but also to gain better insights into their impacts on ecosystem functioning and societal impacts¹⁵. Natural climate variability induces considerable inter-decadal fluctuations in stormy events¹⁶, including so-called damaging hydrological events (DHE)¹⁷, not least in the coastal and mountainous areas of the Mediterranean region. Studies of past climate in Europe^{9,18–24} have documented a long history of warmer and colder climate as well as wetter and drier periods, alternating repeatedly and often abruptly, with a profound influence on shaping multiple damaging hydrological events^{25–29}. For instance, Bradley *et al.*³⁰ and Ljungqvist *et al.*¹⁰ identified past periods of Mediterranean hydroclimate showing similarities to that of the present. However, the millennium-long evolution of hydrological extreme events for the Mediterranean Basin has hitherto only been studied to a very limited extent^{31–35}.

¹Met European Research Observatory – International Affiliates’ Program of the University Corporation for Atmospheric Research, Via Monte Pino snc, 82100, Benevento, Italy. ²Department of History, Stockholm University, 106 91, Stockholm, Sweden. ³Bolin Centre for Climate Research, Stockholm University, 106 91, Stockholm, Sweden. ⁴Department of Geography, University of Cambridge, CB2 3EN, Cambridge, United Kingdom. ⁵UCA, INRA, VetAgro Sup, Unité Mixte de Recherche sur l’Écosystème Prairial (UREP), 63000, Clermont-Ferrand, France. Correspondence and requests for materials should be addressed to F.C.L. (email: fredrik.c.l@historia.su.se)

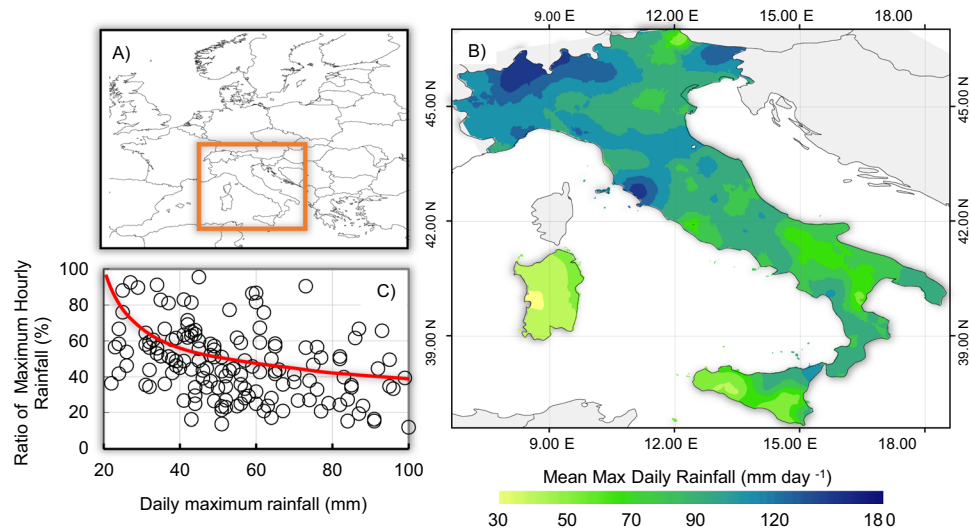


Figure 1. Environmental setting and nature of precipitation. (A) The study region. (B) Spatial pattern of the mean maximum daily rainfall with inverse distance weighting interpolation over the period 1994–2003, and (C) ratio of maximum recorded hourly rainfall versus maximum daily precipitation for Italy, with natural-log interpolation function (red curve) based on a dataset from the *Rete Agrometeorologica Nazionale*⁹⁵.

To fill in this gap, we assessed historical documentary data describing DHEs in Italy during the period 800–2017. Historical documentary data, including diaries, can provide high-resolution meteorological as well as social, cultural and economic information. They can often also provide information about social vulnerability to climate extremes and allow for a direct comparison with contemporary climatology³⁶. In addition to Italian archival and library research, a number of literary sources were accessed through a web-engine search of digitized old books (<https://books.google.com>), generating ~100,000 bibliographic entries. In this first comprehensive bibliographic search, only ~1,000 entries met the criteria of the keywords *rainfall*, *storm*, *flood* and *alluvial*, in addition to some Latin locutions, and were chosen for careful reading; in turn, only 150 literary works were found to be useful for the region and period of interest here. The data of interest from the documentary sources were retrieved by transforming the information from the documentary sources into numerical values on an index scale (see Methodological criteria and Catalogue of Storm Severity Index (SSI) in Methods and Supplementary Information, respectively). We thus created annual indices – a Storm Severity Index Sum (SSIS) – from the sum for SSI of seven Italian regions (following either administrative or natural borders). This process presents a significant challenge, requiring a dynamical understanding of the historical sources in question in addition to a deep knowledge of the regional climates and a familiarity with the relative strengths and weaknesses of each source type. For this reason, a procedure called *weather hindcasting*³⁷ was applied to become familiar with well-documented anomalies within the instrumental period prior to analysing analogous cases in the pre-instrumental past. In this way, a scoring system was established to grade SSI per region (calculated in the period of the year between October and April), equal to 0 (normal), 1 (stormy), 2 (stormy with a few floods), 3 (stormy with big floods) and 4 (extraordinarily stormy with very large floods)³⁸. Storms occurring during the warm season (May to September) were not considered here as these storms generally only affect restricted areas of the present-day Italian territory and, as such, are not representative for the reconstruction of storminess in this study.

Environmental Setting

Cyclonic circulations – due to their frequency, duration and intensity – play an important role in the weather and climate system over the entire Mediterranean Basin; a large spectrum of environmental variables and phenomena are associated with cyclones in this region. Wind regime, air pressure, temperature, cloudiness, precipitation, thunderstorms, floods, waves, storm surges, landslides, avalanches, air quality and even fog and visibility in the Mediterranean are influenced by the formation and passage of cyclonic disturbances³⁹. The central Mediterranean region, although located to the south of the main Atlantic storm track that more directly affects northwestern Europe (Fig. 1A), is quite frequently subjected to sudden events of extreme and adverse weather, often with large societal and economic impacts. The northernmost part of the central Mediterranean region is particularly stormy⁴⁰, though DHEs are common in central and southern Italy²⁶. This manifests the fact that the maximum daily rainfall of the less stormy, more southern, hydroclimatic areas is still capable of causing damages (Fig. 1B). For instance, in areas with rainfall less than 50 mm d⁻¹, the ratio is typically >50%, which means that more than half of the heavy daily rain falls in very short intense-storms (red curve in Fig. 1C).

Completeness of the data set. We revealed the presence of 674 damaging hydrological events in the assessed historical documentary data. Sorting these events into classes of severity gives 232 *stormy events*, 292 *very stormy events*, 112 *great stormy events*, and 38 episodes of *extraordinary stormy events*, distributed across seven regions of Italy (Table 1). They include administrative regions (Marche, and Calabria and Sicily together), river basins (Adige in northern Italy, Arno and Tiber in central Italy, and Calore in southern Italy) and sets of sites

Severity classes (SSI)	Marche Region	Arno Basin	“Hot-Spot” (Italy)	Tiber Basin	Calore Basin	Adige Basin	Calabria + Sicily
1	21	31	50	30	30	30	20
2	51	47	65	40	20	43	26
3	12	16	20	24	7	15	18
4	3	5	6	13	4	4	3

Table 1. Number of storm severity index (SSI) classes for each geographical region.

(“hot-spots”) whose exact location remain unknown, or are known and are different each time but do not cover the other regions, for which storm events are noted in historical sources. In this way, we accounted for areas with of different size in order to represent hydrological and meteorological phenomena operating at different spatial scales (e.g., the consequences of a heavy thunderstorm are not the same if the event occurs in a small basin or in a large region). Other hydrographic basins/regions of Italy have not been included in this study as documentary data from them are not providing sufficiently detailed information extending back into early medieval times. For instance, ancient sources from several regions of southern Italy are only fragmentarily available. Moreover, two geographically adjacent regions, Calabria and Sicily, were merged with the aim to ensure the continuity of the sources between older and more recent times.

However, there can be different factors of uncertainty in the classification of the storm data. It is well-established that there is a tendency in historical documentary data to underestimate small events with isolated storms, especially when they occurred in an area with poorer communication infrastructures^{41,42}. To overcome some uncertainties, we established a “reasonable criterion” with respect to the recorded SSI events. This was done by verifying, for each region, the scale-invariance in the relationship between the number of events larger than the storm strength events and the same strength events⁴³. The completeness analysis was formalized with the relationship between the cumulative number of events (*CEN*) and SSI values within the range $1 \leq \text{SSI} \leq 4$, as follows⁴³ (Eq. 1):

$$\log_{10}(CEN_{i,j}) = a + b \cdot \text{SSI}_{i,j} \text{ with } i = 1, \dots, 4 \text{ and } j = 1, \dots, 7,$$

where the SSI is the storm severity index by severity class (*i*) and region (*j*). Negative slopes in Fig. 2 reflect the principle of a progression towards less frequency as storm events become larger.

A Pearson correlation coefficient $r = 1.00$ is expected, with probability to reject $r = 0$ equal to $p < 0.01$. The catalogue concerning the Calabrian-Sicilian area, for which a shortage of information is evident during the period 1200–1500 (pink area in Fig. 2a, A₁ and A₈), represents an exception. For this reason, the Calabrian-Sicilian series was not included in the final catalogue, so that the storm events during the period 800–2017 may be assumed significantly scale-invariant and complete only for the 395 events that, within the range $2 \leq \text{SSI} \leq 4$, are described in qualitative terms as very, great and extraordinary storms. The remaining 212 events with $\text{SSI} = 1$ (red points in the scatterplots) are not fitted by the regression line drawn in Fig. 2a, A₁–A₇. Their number is much smaller than required by Eq. (1), probably because many of these lowest energetic events escaped detection in the past. The events with $\text{SSI} = 1$, classified as stormy events, have been discarded from temporal analysis because they are not representative of the entire catalogue within the period 800–2017. Figure 2b, B₁–B₆ illustrates the time-series of single regions that have passed the completeness test, with the millennial-long evolution of SSI values (white histograms) and their respective 31-year Gaussian filtered series (red curve).

From a practical point of view, the invariance of the temporal scale is verified when – having taken a sufficient time *t* within the series – this must be subject to the “law” according to which the very extreme phenomenon (e.g., catastrophic flood) is expected to happen fewer times than the slightly less extreme event (e.g. major flood), and so forth, down to light events (e.g., just a storm) that are expected to occur frequently. It may happen that even apparently continuous series do not fully satisfy the criterion of temporal homogeneity, and then the invariance of the time-scale. As an example, a continuous and apparently homogeneous series may contain only storm events belonging to the low and medium classes in ancient times compared to the most recent part of the series, where events of different magnitude are present because of the availability of richer documentary sources. In such cases, it must be concluded that the series, although presenting a temporal continuity of events, is not uniformly representing the relative classes of the same events, which are not homogeneously distributed across the series. As a consequence, the scale invariance is not respected and the series has to be discarded for further analysis.

Regional reconstruction of damaging hydrological events. With help of the historical sequence of stormy winters, it is possible to study the influences of climate variability on rainstorms over the period 800–2017. We focus particularly on the relatively warm Medieval Climate Anomaly (MCA, here 800–1249), the cold Little Ice Age (LIA, here 1250–1849), and the period of recent warming (RW) (since 1850). The recurrence of expected damaging hydrological events may be fundamentally explained by repeated occurrences of a storm severity index sum. In order to identify possible trends and oscillation in hydrological events, the time-series was filtered by a low-pass 11-year Gaussian function – SSIS (GF) – designed for this purpose following ref.⁴⁴.

In most of our regional reconstructions, there were only a few stormy years and major floods occurring during the first three centuries (800–1099). During this period, a positive phase of the Atlantic Multidecadal Variability (AMV)⁴⁵ was mostly dominant. Regional precipitation was well below the long-term average and temperatures remained above the long-term average⁴⁶. Furthermore, Fig. 3A indicates varying levels of inter-annual variability

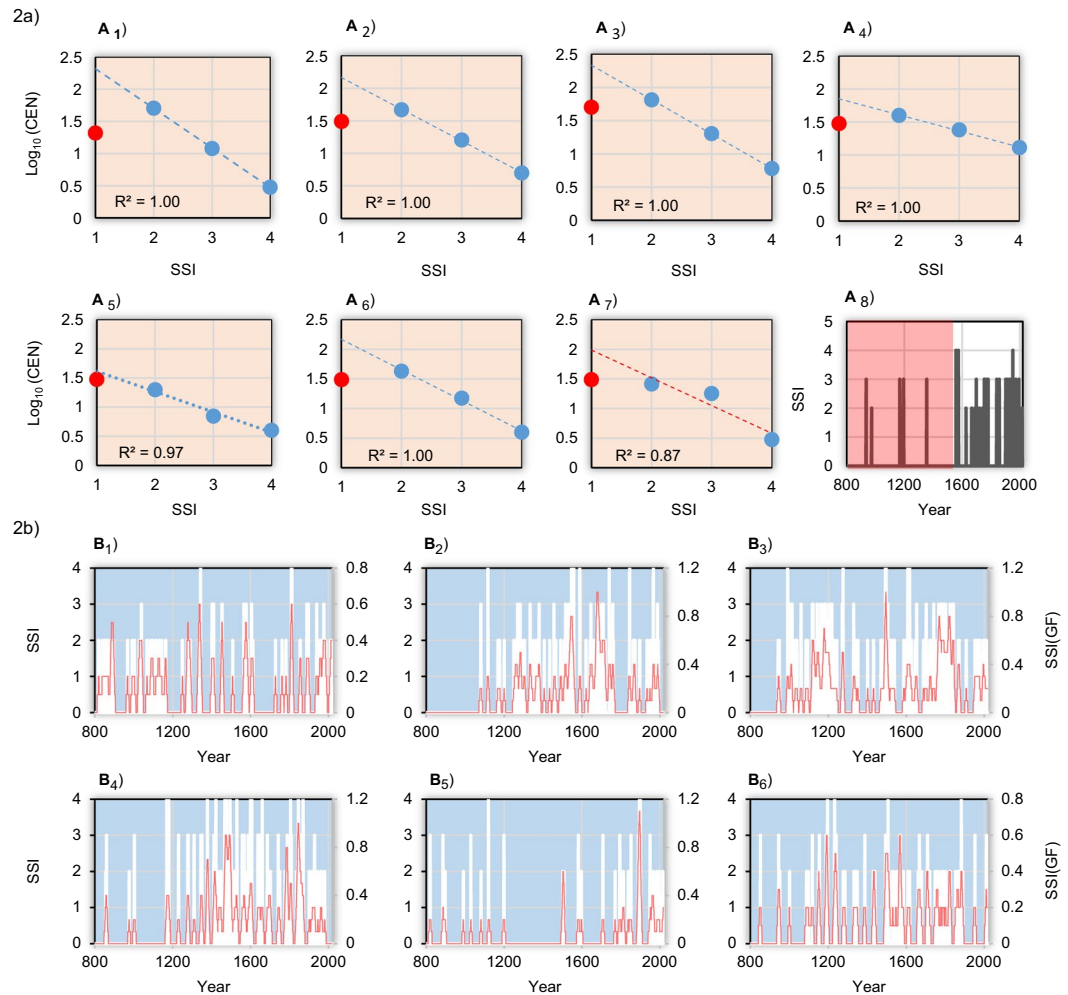


Figure 2. Cumulative distribution of the logarithm of number of storm events versus their storm severity index (SSI) and relative time-series during the period 800–2017 in Italy. (Panel a) A₁ Marche region, A₁ Arno river basin, A₂ Hot-Spots, A₃ Tiber basin, A₄ Calore basin, A₅ Adige basin, and A₆ Calabrian-Sicily regions. In A₇, note that for this last area, the catalogue result not complete (data points are not aligned along the linear regression), and this was due to shortage of information during the period 1200–1500 (pink area of the SSI-time series. Red points in the scatterplots represent the storm event with SSI = 1. (Panel b) As in a, but for time-series of SSI, respectively.

in flood events between c. 1200 and 1400, when the pollen counts were extremely low; the pollen data clearly suggest that large areas were highly deforested as early as the 10th century⁴⁶ (Fig. 3E). The deforestation may have favoured the occurrence of multi-annual flooding pulses of moderate intensity until reforestation occurred during the 15th century. This was accompanied by damaging hydrological events in Italy⁴⁷ and much of Europe^{48,49}.

Sutton and Dong⁵⁰ argued for the existence of a causal link between a positive phase of the AMV and drier conditions over the Mediterranean Basin, reflected in less precipitation extremes during the MCA and the RW periods (Fig. 3A,B). In contrast, in the 13th century the AMV shows a decisive shift towards a negative mode, coinciding with the onset of the LIA. Possible additional climate mechanisms governing the frequency of torrential floods in the central Mediterranean region during the successive colder phase of the LIA are long periods of reduced solar activity^{51,52} and enhanced volcanic activity⁵³ causing large-scale cooling (Fig. 3C,D). These concurrent climatic factors likely amplified cooling, making it very difficult to separate volcanic and solar forcing⁵⁴. However, Xoplaki *et al.*⁵⁵ found that the variability in multidecadal mean precipitation and drought in the central and eastern Mediterranean cannot be explained by external forcing agents (e.g. solar and volcanic forcing). Rather, they are mainly driven by internal climate dynamics. Hurrell⁵⁶ and Sanchez-Gomez *et al.*⁵⁷ found that negative phases of the North Atlantic Oscillation (NAO) are associated with increased precipitation in southern Europe. However, Barrera-Escoda and Llasat⁵⁸ found that the relationship between the NAO and floods is not as strong, due to the important role of mesoscale factors in heavy precipitation for the Mediterranean region. Diodato and Bellocchi⁵⁹ found no support for a relationship between extreme rainfall at Naples (40°50'N, 14°15'E) and NAO dynamics, suggesting oscillations induced by combined atmosphere and ocean influences as reflected in the AMO and Pacific Decadal Oscillation (PDO) indices. During ~1400–1600 floods reached their

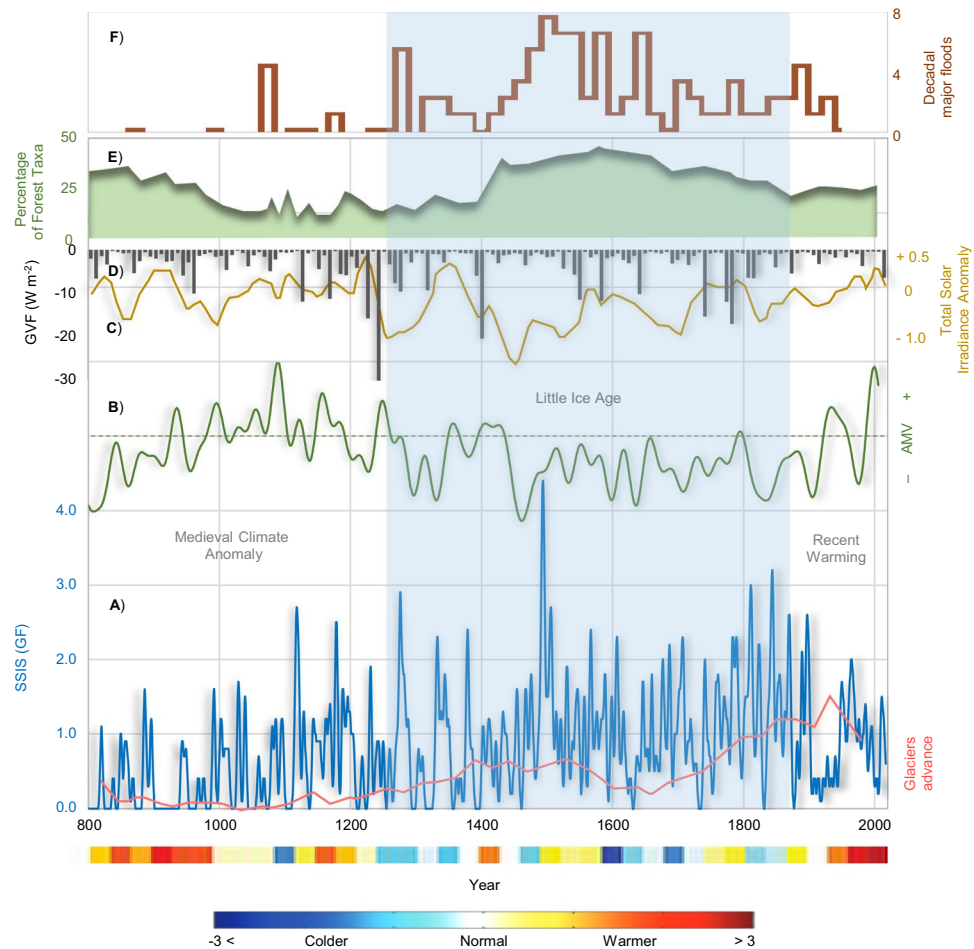


Figure 3. Overview of several environmental and climate patterns during the past twelve centuries (800–2017). (A) Evolution of the smoothed 11-year Gaussian filter of storm severity index sum – SSIS(GF) – in Italy (blue curve) with retreat/advance of the Langjökull glacier (Iceland) reconstructed from the Hvitárvatn lake varves⁹⁶ (red curve). (B) Atlantic Multidecadal Variability (AMV, green curve)⁴⁵. (C) Total solar irradiance anomaly from the value of the Physikalisch-Meteorologisches Observatorium Davos (PMOD) composite during the solar cycle minimum of the year 1986 (1365.57 W m^{-2})⁵¹. (D) Global volcanic forcing⁵³. (E) Percentage arboreal pollen record (green shape) averaged between central and southern Italy^{46,97}, respectively, and (F) Hydrological variability for the Po River Basin (brown curve) reconstructed by foraminiferal $\delta^{18}\text{O}$ record-sediment core³³. The coloured bands of surface air temperature anomalies with regard to the 1961–1990 climate baseline for Europe⁶¹, at the bottom.

maximum, before decreasing temporarily and increasing again from ~1700 onwards, in correspondence with a gradual decrease of woodland relative to cropland (Fig. 3A,E).

Hodgkins *et al.*⁶⁰ found that the occurrence of major flooding in Europe and North America often varied driven by the AMV. During the recent warming, the AMV has reverted to a positive mode, with decreasing storms and a sudden decline of floods in Italy during the 20th century. Extraordinary and great stormy winters are very isolated events during the 20th century (e.g., Arno River flooded in 1966), with mostly SSIS(GF) < 2 throughout the 20th century and the beginning of the 21st century. We compared our twelve century-long reconstruction of damaging hydrological events with independent datasets, including the occurrence of major floods at decadal scale for Po River Basin³³ (Fig. 3F, brown histogram). In Fig. 3E (green shape), we also show the percentage of arboreal pollen averaged between central and southern Italian sites^{46,61}, respectively. These fluctuations are in general agreement with our DHEs reconstruction throughout the past twelve centuries. This adds additional strength to our work because the time-series from which the data originate come from are totally independent from the documentary data used here. Another factor highlighting that the reconstructed DHE fluctuations indeed are genuine is a reconstruction of extreme hydrological events in the Po River Basin. In addition, at longer time-scales stronger the damaging hydrological events appear to correspond reasonably well with glacial advance phases in Iceland occurring during the LIA (Fig. 3A, orange curve).

Variability, frequency distribution and persistence patterns. The variability of storminess measures to what extent the annual storms deviate from their average value, and plays an important role in the occurrence

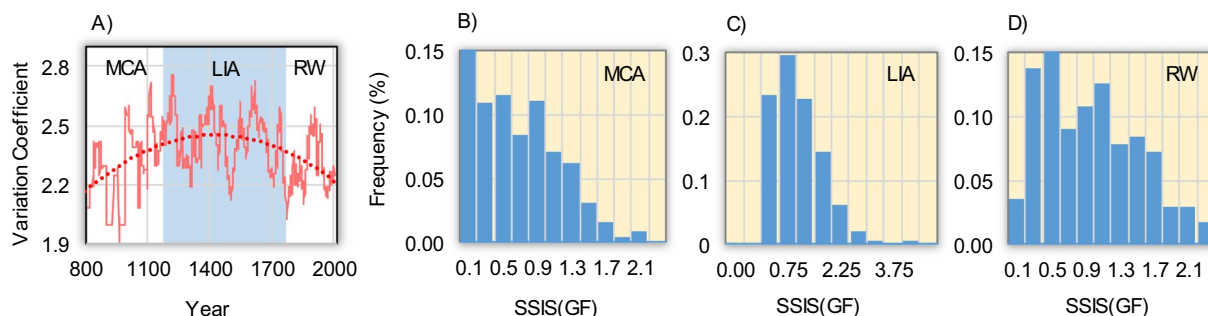


Figure 4. Multidecadal variability of variation coefficients of the SSI for all the regions with (A) moving-window of 31-years with an over-imposed polynomial dotted curve, (B) relative percentage frequency of SSIS(GF) distribution pattern over 800–1250 (MCA: Medieval Climate Anomaly), (C) 1250–1849 (LIA: Little Ice Age), and (D) 1850–2017 (RW: Recent Warming).

of damaging extreme hydrological phenomena. Here, we present the coefficient of variation calculated for all the six regions with a 31-year moving window (Fig. 4A, orange curve) with the respective long-term trend interpolation (red dotted curve). It is possible to identify, in this long-term trend, a greater inter-annual variability present during the LIA (1250–1849), as compared with the MCA (800–1249) and the RW (1850–2017), as well as the presence of some important multi-decadal oscillations.

It is difficult to detect signals of climate change in the modulation of convection associated with the extreme storm events across Italy because there is often large spatial variability in their occurrence⁶². The histograms of the relative frequency of storm events indicate that the MCA and the RW (Fig. 4B,D) present a generally similar pattern as opposed to the LIA (Fig. 4C). During the MCA and RW periods some variability in the form of quasi-multimodality displaces the distribution from the symmetrical pattern (Gaussian shape) observed during the LIA. The similarity and multimodality of the distributions in MCA and RW periods are indicative of situations where precipitation largely is dominated by storm-like systems, bringing DHEs across Italy. We hypothesize that – contrary to during the warmer medieval and recent times – relatively homogeneous (in space and time) precipitating systems crossed the Mediterranean area during the cold LIA⁶³. Under these conditions, the domination of local and non-homogeneous effects, typical of the warming phases⁶², could aggravate critical climatic-environmental situations in the most vulnerable parts of the Mediterranean Basin, where a certain inability to measure intense and unpredictable rainstorms persists, owing to insufficiently distributed rain gauge networks⁶⁴ mostly concentrated over land masses⁶⁵.

Conclusions

We have presented the first, annually resolved, millennium-long (800–2017) reconstruction of the variability of hydrological extreme events across Italy. The LIA appears to have been a period of increased regional storminess, with a much more homogeneous distribution of storm events compared to the storm patterns occurring during medieval and recent times. Without providing conclusive evidence regarding the causes of the observed changes in the reconstructed frequency and severity of storm events, we suggest that the different patterns of storminess during the past twelve centuries can be linked to large-scale changes in the modes of climate, in particular the AMV. Focusing on climatology and inter-annual to inter-decadal variability, this study provides a more detailed analysis and a useful insight into the Mediterranean hydrology for which past records reflect wet and dry episodes alternating over decadal to centennial time-scales with major, abrupt transitions, reflecting changes in atmospheric circulation⁶⁶. In this way, historical records alongside modern observation data offer a valuable chance to extend information about storms and floods, and how their impacts propagate over time and space. This study offers a spectrum of evidence to orient further research towards sub-regional and local analyses and thereby increasing the knowledge of the spatial variability of the features of different DHEs. Ultimately, this would help to facilitate a better knowledge of the complex nature of the flood challenges and their management⁶⁷.

Methods

Documentary sources. In much of the Mediterranean region, as elsewhere in Europe, the proportion of surviving documentary sources increases during the medieval period, enabling the development of climatic indices^{37,39}. Instrumental measurements of natural phenomena are lacking prior to the late 17th century and we rarely have regular meteorological indications⁶⁸. Historical information, including such obtained from diaries, are thus the source available of quantitative meteorological, social, cultural, and economic information, providing knowledge about social vulnerability to climate extremes and allowing for direct comparison with contemporary climatology³⁶. However, research of this type is difficult, and require an interdisciplinary approach⁴¹, based on collaboration between historians, geographers and climatologists⁶⁹.

The study of the most famous fluvial floods suffered by the urban population of the Middle Ages offers the possibility to conceptually overcome a too rigid distinction between natural disasters and disasters produced by human agency. In fact, contemporary people perceived the occurrence of flood events as both the result of natural factors and human actions, without distinguishing between them. Disasters of this kind to the detriment of the cities strongly impressed the people of the time. Reporters, poets, magistrates of government, as well as religious authorities, left a substantial documentation made of both narratives and legislative provisions⁷⁰. In many ancient

sources or sources referring to original documents, information is available in Latin, and there are several declinations for the term *storm* and its damaging hydrological events (DHEs), such as *diluvium*, *inundatio*, *exrescentia*, *fluminum* and related composite locutions such as *magnae pluviae*, *aqua maxima*, *tanta aquorum*, *inundation abundavit*, *impetus & aquarum multitudine*.

All text passages relating to climate were made machine-readable, for a rapid comparison of data in space and over time⁷¹. A first key reference reporting ancient chronicles is the book of Sethus Calvisius (1556–1615), a German chronologist and astronomer, written in Latin, *Opus Chronologicum*⁷², reporting a detailed and extended list of the natural hazards and extreme climatic events since Antiquity. Later, Father Secondo Lancellotti (1583–1643) published an important book in Italian in Venice⁷³, listing the events with the year as heading on the side, and the source is mentioned but much shortened. Other records referring to medieval chronicles capturing climatic information are mainly found in the *Annals of Di Meo*⁷⁴, which report a wide variety of DHEs for southern Italy. Among other literary sources of the Italian Middle Ages, there are various medieval chronicals, such as the *Cavense*, published in 1754 by Francesco Maria Pratilli⁷⁵ (1689–1763), and the *Chronica of Salimbene Parmensis*⁷⁶. An important and extended documentary source is the *Monumenta Germaniae Historica*, published by Georg Heinrich Pertz (1795–1876)⁷⁷ and available in different editions (1826, 1844, 1859 and 1866). It includes a full set of carefully prepared sources covering a period of time ranging from the fall of the Western Roman Empire (476) to the 16th century. Other specific information on abnormal rainfall and floods in Italy can be found in the *Annali of Geografia Fisica*⁷⁸.

Most of the research in historical climatology in Europe focus on the Early Modern Period (c. 1500–1800), partly due to lack of documentary data from earlier periods for most of the continent. They have established many of the methods and procedures that have become a standard in this discipline³⁷. For instance, the keeping of weather diaries in Europe became a scientific practice from the late-15th century, i.e. from the beginning of the Early Modern Period⁷⁹. Among these, there are the diaries of Moio and Susanna, who report, for the South of Italy, information on both climate and famines from 1500 to 1769⁸⁰. Then, there is also a wide range of narrative texts in which the information cannot be found except in generic historical sources, that is, broader discourses touching the secular affairs, as well as political, medical and religious ones⁸¹. They seem to recommend merging the natural and social sciences⁸². These texts are generally available from the Middle Ages onward, for both southern and northern Italy. It should be taken into account that the major centres of literacy, besides the Curia in Rome, first were located in Monte Cassino (41°29'N, 13°48'E), then in Benevento (41°08'N, 14°47'E), Bari (41°08'N, 16°52'E) and San Vincenzo al Volturno (41°38'N, 14°05'E)^{83–85}. In central and northern Italy, Veneto documents^{41,86–89}, and others sources from the Arno⁷⁰ and Tiber River basin^{90,91}, also provide a unique opportunity for reconstructing a long time-series of extreme events that have characterized the climate over the past twelve centuries. The southern-most Italian areas are, however, not well-represented in the medieval chronicles and we do not know whether these regions were lacking reported events or actually were not subject to DHEs during this period. Relevant sources for other Italian basins/regions are available from several basins/regions, but they were not aggregated into our study as they do not extend back into the early Middle Ages. For instance, the study by Roccati *et al.*⁹² contains a useful hydrological analysis for a Ligurian River Basin (Entella River), containing detailed hydrological information extending back to 1758. In the same region, documentary sources for the Bisagno River date back to 1400 but not further.

Criteria for collecting and interpreting the information. We have taken into account all information with a direct bearing on weather effects, such as stormy seasons that are related to extraordinary or continuous rainfall, and the effects on the terrestrial system, such as storm that have caused periods of floods on agricultural lands, and damages to transport infrastructural networks. These data were referred for seven areas representative of Italian territory: (1) the Adige river basin, (2) the Arno basin, (3) the Marche region, (4) the Tiber basin, (5) the Calore basin, (6) the Calabrian and Sicily regions, and (7) the entire territory of Italy, for events that have not a precise indication of local injuries. For each of these areas, a Storm Severity Index (SSI) was developed. Creating the SSI presents a significant challenge, requiring a dynamical understanding of the evidence base in addition to a deep knowledge of the regional climates and familiarity with the strengths and weaknesses of each historical source.

We set a grade SSI per year and for each region (see Supplementary Information), equal to 0 (normal), 1 (stormy event), 2 (very stormy event), 3 (great stormy event) and 4 (extraordinary stormy event) as following the explication³⁸:

Normal means average or storm passed unobserved, without comments about the severity of its impact on the society and economy.

Stormy, an event is considered stormy if the rainfall was intense, and only limited damage is recorded. No floods are recorded.

Very stormy was classified when intense rainfall occurred with some floods.

Great stormy is an extreme event, with severe and large floods and with agricultural works are suspended, and urban communication interrupted.

Extraordinary stormy is characterized by sporadic very extreme events, with a low (centennial-scale) recurrence rate. These extreme events affect, at the same time, several river basins, killing people, animals and felling trees.

We based the reconstruction of annually-resolved time-series on the year of each event without assessing for daily/monthly regimes of events. The creation of an annual index was accomplished by the sum of SSI of each region, make up the Storm Severity Index Sum (SSIS)⁹³. This procedure was repeated several times in order to reduce inhomogeneities. The study was based on the systematic and critical analysis of data on the above-mentioned phenomena offered by Italian documentary sources for a period covering the period 800–2017. For this area and for this period we have many historical sources, especially in Italy, chronologically compiled

from the 9th century. For most of the information, it was possible to make an event check by considering more than one documentary source. It was also possible to contextualise the storm events with other types of historical events (e.g., of economic, social, agricultural, religious nature). In this way, the reliability of information can be assessed by shedding light on the issue of climate relations and extreme events, looking beyond the quantitative data, and seeking alternative sources in diaries, chronicles and local stories that generally provide considerable attention to climate, thus conditioning the social, economic and agricultural life⁹⁴. In this way, the analysis can be greatly enriched and not limited to climatic events alone.

References

- Held, I. M. & Soden, B. J. Robust responses of the hydrological cycle to global warming. *J. Clim.* **19**, 5686–5699 (2006).
- Christensen, J. H., Kanikicharla, K. K., Marshall, G. & Turner, J. In *Climate Change 2013: The Physical Science Basis. Contribution of Working Group I to the Fifth Assessment Report of the Intergovernmental Panel on Climate Change* (eds Stocker, T. F. et al.) 1217–1308 (Cambridge University Press, Cambridge, 2013).
- Sheffield, J., Wood, E. F. & Roderick, M. L. Little change in global drought over the past 60 years. *Nature* **491**, 435–438 (2012).
- Greve, P. et al. Global assessment of trends in wetting and drying over land. *Nat. Geosci.* **7**, 716–721 (2014).
- Byrne, M. P. & O’Gorman, P. A. The response of precipitation minus evapotranspiration to climate warming: why the “wet-get-wetter, dry-get-drier” scaling does not hold over land. *J. Clim.* **28**, 8078–8092 (2015).
- Nasrollahi, N. et al. How well do CMIP5 climate simulations replicate historical trends and patterns of meteorological droughts? *Water Resour. Res.* **51**, 2847–2864 (2015).
- Cook, E. R., Woodhouse, C., Eakin, C. M., Meko, D. M. & Stahle, D. W. Long-term aridity changes in the Western United States. *Science* **306**, 1015–1018 (2004).
- Cook, E. R. et al. Asian monsoon failure and megadrought during the last millennium. *Science* **328**, 486–489 (2010).
- Cook, E. R. et al. Old World megadroughts and pluvials during the Common Era. *Sci. Adv.* **1**, e1500561 (2015).
- Ljungqvist, F. C. et al. Northern Hemisphere hydroclimate variability over the past twelve centuries. *Nature* **532**, 94–98 (2016).
- Min, S. K., Zhang, X., Zwiers, F. W. & Hegerl, G. C. Human contribution to more-intense precipitation extremes. *Nature* **470**, 378–381 (2011).
- Asadieh, B. & Krakauer, N. Y. Global trends in extreme precipitation: Climate models versus observations. *Hydrol. Earth Syst. Sci.* **19**, 877–891 (2015).
- Donat, M. G., Lowry, A. L., Alexander, L. V., O’Gorman, P. A. & Maher, N. More extreme precipitation in the world’s dry and wet regions. *Nat. Clim. Change* **6**, 508–513 (2016).
- Brönnimann, S., Romppainen-Martius, O., Rohr, C., Bresch, D. N. & Lin, K.-H. E. Historical weather data for climate risk assessment. *Ann. N. Y. Acad. Sci.* **1436**, 121–137 (2019).
- Camuffo, D., Bertolin, C., Schenal, P., Craievich, A. & Granziero, R. The Little Ice Age in Italy from documentary proxies and early instrumental records. *Mediterranée: Revue géographique des pays méditerranéens* **122**, 17–30 (2014).
- Viles, H. A. & Goudie, A. S. Interannual, decadal and multidecadal scale climatic variability and geomorphology. *Earth Sci. Rev.* **61**, 105–131 (2003).
- Petrucchi, O. et al. The vulnerability of people to damaging hydrogeological events in the Calabria Region (Southern Italy). *Int. J. Environ. Res. Public Health* **29**, E48 (2017).
- Grove, J. M. The initiation of the Little Ice Age in regions round the North Atlantic. *Clim. Change* **48**, 53–82 (2001).
- Brázdil, R., Pfister, C., Wanner, H., von Storch, H. & Luterbacher, J. Historical climatology in Europe: The state of the art. *Clim. Change* **70**, 363–430 (2005).
- Brázdil, R., Pfister, C., Wanner, H., von Storch, H. & Luterbacher, J. European climate of the past 500 years: New challenges for historical climatology. *Clim. Change* **101**, 7–40 (2010).
- Corella, J. P., Valero-Garcés, P. L., Vicente-Serrano, S. M., Brauer, A. & Benito, G. Three millennia of heavy rainfalls in Western Mediterranean: frequency, seasonality and atmospheric drivers. *Sci. Rep.* **6**, 1–11 (2016).
- Luterbacher, J. et al. European summer temperatures since Roman times. *Environ. Res. Lett.* **11**, 024001 (2016).
- Büntgen, U. et al. New tree-ring evidence from the Pyrenees reveals western Mediterranean climate variability since medieval times. *J. Clim.* **30**, 5295–5318 (2017).
- Markonis, Y., Hanel, M., Máca, P., Kysely, J. & Cook, E. R. Persistent multi-scale fluctuations shift European hydroclimate to its millennial boundaries. *Nat. Commun.* **9**, 1767 (2018).
- Diodato, N., Ceccarelli, M. & Bellocchi, G. Decadal and century-long changes in the reconstruction of erosive rainfall anomalies at a Mediterranean fluvial basin. *Earth Surf. Proc. Land.* **33**, 2078–2093 (2008).
- Diodato, N., Bellocchi, G., Fiorillo, F. & Longobardi, A. In *Storminess and environmental change: climate forcing and responses in the Mediterranean region* (eds Diodato, N. & Bellocchi, G.) 179–192 (Springer, New York, 2014).
- Diodato, N. et al. Historical evolution of slope instability in the Calore River Basin, Southern Italy. *Geomorphology* **282**, 74–84 (2017).
- Brázdil, R. et al. In: *Changes in flood risk in Europe* (ed. Kundzewicz, Z. W.) 121–166. (CRC Press, Boca Raton, 2012).
- Elleder, L. Historical changes in frequency of extreme floods in Prague. *Hydrol. Earth Syst. Sci.* **19**, 4307–4315 (2015).
- Bradley, R. S., Wanner, H. & Diaz, H. F. The Medieval Quiet Period. *Holocene* **26**, 990–993 (2016).
- Camuffo, D., Secco, C., Brimblecombe, P. & Martin-Vide, J. Sea storms in the Adriatic Sea and the Western Mediterranean during the last millennium. *Clim. Change* **46**, 209–223 (2011).
- Calò, C. et al. 1200 years of decadal-scale variability of Mediterranean vegetation and climate at Pantelleria Island, Italy. *Holocene* **23**, 1477–1486 (2013).
- Taricco, C. et al. Marine sediment remotely unveil long-term climatic variability over Northern Italy. *Sci. Rep.* **5**, 12111 (2015).
- Hall, J. et al. Understanding flood regime changes in Europe: a state-of-the-art assessment. *Hydrol. Earth Syst. Sci.* **18**, 2735–2772 (2014).
- Ljungqvist, F. C. In *Issues and concepts in historical ecology: The past and future of landscapes and regions* (eds Crumley, C. L., Lennartsson, T. & Westin, A.) 41–83 (Cambridge University Press, Cambridge, 2017).
- Adamson, G. C. D. Private diaries as information sources in climate research. *WIREs Climate Change* **6**, 599–611 (2015).
- Pfister, C., Camenish, C. & Dobrovolný, P. In *The Palgrave handbook of climate history* (eds White, S., Pfister, C. & Mauelshagen, F.) 115–129 (Palgrave Macmillan, Basingstoke, 2018).
- Wetter, O. et al. The largest floods in the High Rhine basin since 1268 assessed from documentary and instrumental evidence. *Hydrol. Sci. J.* **56**, 733–758 (2011).
- Lionello, P. et al. In *Mediterranean climate variability* (eds Lionello, P., Malanotte-Rizzoli, P. & Boscolo, R.) 325–372 (Elsevier, Amsterdam, 2006).
- Nikolopoulos, E. I., Anagnostou, E. N. & Borga, M. Using high-resolution satellite rainfall products to simulate a major flash flood event in Northern Italy. *J. Hydrometeorol.* **14**, 171–185 (2013).
- Camuffo, D. & Enzi, S. Istruzione per la catalogazione dei dati d’archivio per la ricostruzione di climatologica storica. *Bollettino Geofisico* [in Italian] **14**, 133–148 (1991).

42. Camuffo, D. & Enzi, S. In *European climate reconstructed from historical documents: methods and results* (ed. Frenzel, B.) 65–74 (Fischer Verlag, Stuttgart, 1992).
43. Mazzarella, A. & Diodato, N. The alluvial events in the last two century at Sarno, southern Italy: their classification and power-low time occurrence. *Theor. Appl. Climatol.* **72**, 75–84 (2002).
44. Forland, E. J., Hanssen-Bauer, I. & Nordli, P. Ø. *Climate statistics and long term series of temperature and precipitation at Svalbard and Jan Mayen* (Norwegian Meteorological Institute, Report No. 21/97 KLIMA23, Oslo, 1997).
45. Wang, J. *et al.* Internal and external forcing of multidecadal Atlantic climate variability over the past 1,200 years. *Nat. Geosci.* **10**, 512–517 (2017).
46. Mensing, S. *et al.* Human and climatically induced environmental change in the Mediterranean during the Medieval Climate Anomaly and Little Ice Age: A case from central Italy. *Anthropocene* **15**, 49–59 (2016).
47. Leggio, T. In: *I valori dell'agricoltura nel tempo e nello spazio Vol. I* (eds Grillotti di Giacomo, M. G. & Moretti, L.) 99–115 [in Italian] (Brigati, Genoa, 1998).
48. Magny, M. *et al.* Solar and proxy-sensitivity imprints on paleohydrological records for the last millennium in west-central Europe. *Quat. Res.* **73**, 173–179 (2010).
49. Kaniewski, D. *et al.* Solar pacing of storm surges, coastal flooding and agricultural losses in the Central Mediterranean. *Sci. Rep.* **6**, 25197 (2016).
50. Sutton, R. & Dong, B. Atlantic Ocean influence on a shift in European climate in the 1990s. *Nat. Geosci.* **5**, 788–792 (2012).
51. Steinhilber, F., Beer, J. & Fröhlich, C. Total solar irradiance during the Holocene. *Geophys. Res. Lett.* **36**, L19704 (2009).
52. Delaygue, G. & Bard, E. An Antarctic view of Beryllium-10 and solar activity for the past millennium. *Clim. Dyn.* **36**, 2201–2218 (2011).
53. Sigl, M. *et al.* Timing and climate forcing of volcanic eruptions for the past 2,500 years. *Nature* **523**, 543–549 (2015).
54. Wanner, H. *et al.* Mid- to late Holocene climate change: an overview. *Quat. Sci. Rev.* **27**, 1791–1828 (2008).
55. Xoplaki, E. *et al.* Modelling climate and societal resilience in the Eastern Mediterranean in the last millennium. *Human Ecology* **46**, 363–379 (2018).
56. Hurrell, J. W. Decadal trends in the North Atlantic Oscillation: regional temperature and precipitations. *Science* **269**, 676–679 (1995).
57. Sanchez-Gomez, E., Terray, L. & Joly, B. Intra-seasonal atmospheric variability and extreme precipitation events in the European–Mediterranean region. *Geophys. Res. Lett.* **35**, L15708 (2008).
58. Barrera-Escoda, A. & Llasat, M. C. Evolving flood patterns in a Mediterranean region (1301–2012) and climatic factors – the case of Catalonia. *Hydrol. Earth Syst. Sci.* **19**, 465–483 (2015).
59. Diodato, N. & Bellocchi, G. Using historical precipitation patterns to forecast daily extremes of rainfall for the coming decades in Naples (Italy). *Geosciences* **8**, 293 (2018).
60. Hodgkins, G. A. *et al.* Climate-driven variability in the occurrence of major floods across North America and Europe. *J. Hydrol.* **552**, 704–717 (2017).
61. PAGES 2k Consortium. Continental-scale temperature variability during the past two millennia. *Nat. Geosci.* **6**, 339–346 (2013).
62. Diodato, N., Bellocchi, G., Chirico, G. B. & Romano, N. How the aggressiveness of rainfalls in the Mediterranean lands is enhanced by climate change. *Clim. Change* **108**, 591–599 (2011).
63. Luterbacher, J. *et al.* In *The climate of the Mediterranean region* (ed. Lionello, P.) 87–185 (Elsevier, Amsterdam, 2012).
64. Mazzarella, A., Tranfaglia, G. & Di Donna, G. Il contributo della geometria frattale alla stima del deficit risolutivo di una rete di pluviometri e del rischio di piogge intense. *Bollettino Geofisico* [in Italian] **22**, 61–71 (1999).
65. Claud, C. *et al.* A high resolution climatology of precipitation and deep convection over the Mediterranean region from operational satellite microwave data: development and application to the evaluation of model uncertainties. *Nat. Hazards Earth Syst. Sci.* **12**, 785–798 (2012).
66. Macklin, M. G. & Woodward, J. In *The physical geography of the Mediterranean* (ed. Woodward, J.) 319–352 (Oxford University Press, Oxford, 2009).
67. Wilhelm, B. *et al.* Interpreting historical, botanical, and geological evidence to aid preparations for future floods. *WIREs Water* **6**, e1318 (2019).
68. Matheus M. In *Le calamità ambientali nel tardo Medioevo Europeo: realtà, percezioni, reazioni* (eds Matheus, M., Piccinini, G., Pinto, G. & Varanini, G. M.) 1–20 [in Italian] (Firenze University Press, Florence, 2010).
69. Haldon, J. *et al.* History meets palaeoscience: Consilience and collaboration in studying past societal responses to environmental change. *Proc. Natl. Acad. Sci. USA* **115**, 3210–3218 (2018).
70. Salvestrini, F. In *Le calamità ambientali nel tardo Medioevo Europeo: realtà, percezioni, reazioni*. (eds Matheus, M., Piccinini, G., Pinto, G. & Varanini, G. M.) 231–256 [in Italian] (Firenze University Press, Florence, 2010).
71. Pfister, C., Luterbacher, J., Schwarz-Zanetti, G. & Wegmann, M. Winter air temperature variations in western Europe during the Early and High Middle Ages (AD 750–1300). *Holocene* **8**, 535–552 (1998).
72. Calvisius, S. *Opus Chronologicum Ubi Tempus Aftronomium per motus & Echlipfes Luminarium Celestium, tanquam charaesteres infallibiles Epocharum, ex fundamentis Chronologicis demonfratur & applicatur. Editio Quarta* (in Latin) (Gerlach u. Beckenstein, Frankfurt am Main, 1650).
73. Lancellotti, S. *L'hoggi: ovvero il mondo non peggiore, ne più calamitoso del passato* [in Italian] (Giovanni Francesco Valvasense, Venice, 1680).
74. Di Meo, A. *Apparato cronologico agli annali del regno di Napoli* [in Italian] (Tipografia di Vincenzo Bossi, Spoleto, 1851).
75. Pratilli, F. M. *Historia Principum Langobardorum Vol. IV* [in Latin] (Ex Typographia Johannis de Simone, Naples, 1754).
76. Cantarelli, C. *Cronaca di Fra Salimbene Parmigiano: dell'ordine dei minori Vol. II* [in Italian] (Luigi Battei, Parma, 1882).
77. Pertz, G. H. *Monumenta Germaniae historica: inde ab Anno Christi quingentesimo usque ad annum millesimum et quingentesimum Vol. XVIII* (in Latin) (Hahn, Hannover, 1866).
78. Lichtenthal, P. *Manuale di geografia fisica. Seconda edizione originale rifiuta e considerevolmente accresciuta* [in Italian] (Giuseppe Cioffi, Milan, 1854).
79. Pfister, C. *et al.* Daily weather observations in sixteenth-century Europe. *Clim Change* **34**, 111–150 (1999).
80. Ferrari, U. *Giovan Battista Moio, Gregorio Susanna: Diario di quanto successe in Catanzaro dal 1710 al 1769* [in Italian] (Effe Emme, Chiaravalle, 1977).
81. Corradi, A. *Annali delle epidemie occorse in Italia dalle prime memorie fino al 1850, five volumes, reprinted by Società medico-chirurgica di Bologna* [in Italian] (Forni, reprint 1972, Bologna, 1865–1870).
82. Cassiani, G. & Valensise, M. R. In *Energia, clima e ambiente* (Various Editors) 167–173 [in Italian] (L'Officina Tipografica, Rome, 1994).
83. Enzi, S. & Camuffo, D. In *Progetto Strategico "Clima, Ambiente e Territorio nel Mezzogiorno" Vol. 1* (eds Piccione, V., Antonelli, C. & Guerrini, A.) 7–71 [in Italian] (CNR, Lecce, 1991).
84. Figliuolo, B. In *Demografia e società nell'Italia medievale. Secoli IX–XIV* (eds Comba, R. & Naso, I.) 69–77 [in Italian] (Società italiana di demografia storica, Cuneo, 1994).
85. Diodato N. Fattori climatici e calamità ambientali nel Sannio Beneventano (secc. IV–XX). *Rivista Storica del Sannio* [in Italian] **6**, 309–406 (1999).
86. Toaldo, G. *Della vera influenza degli astri sulle stagioni e mutazioni di tempo: Saggio meteorologico* [in Italian] (Tommaso Bertinelli, Padua, 1797).

87. Trener, G. B. In *Scritti geografici e geologici Vol. 1* (eds Bianchi, A., Dal Piaz, G. B. & Morandini, G.) 139–150 [in Italian] (Studi Trentini di Scienze Naturali, Trento, 1957).
88. Donà, P. *Eventi meteorologici nel Veronese* [in Italian] (StreetLib, Verona, 2015).
89. Baldini, E. & Bedeschi, A. *Il fango, la fame, la peste: Clima, carestie ed epidemie in Romagna nel Medioevo e in Età Moderna* [in Italian] (Società Editrice Il Ponte Vecchio, Cesena, 2018).
90. Carcani M. *Il Tevere e le sue inondazioni dalla origine di Roma fino ai giorni nostri* [in Italian] (Tipografia Romana, Rome, 1875).
91. Bersagni, P. & Bencivenga, M. *Le piene del Tevere a Roma, dal V sec a.C. all'anno 2000* [in Italian] (Presidenza del Consiglio dei Ministri, Dipartimento dei Servizi Tecnici Nazionali, Rome, 2001).
92. Roccati, A. *et al.* Historical geomorphological research of a Ligurian Coastal Floodplain (Italy) and its value for management of flood risk and environmental sustainability. *Sustainability* **10**, 3727 (2018).
93. Leckebusch, G. C., Renggli, D. & Ulbrich, U. Development and application of an objective storm severity measure for the Northeast Atlantic region. *Meteorologische Zeitschrift* **17**, 575–587 (2008).
94. Mocarrelli, L. In *Storia economica e ambiente italiano (ca. 1400–1850)* (eds Alfani, G., Di Tullio, M. & Mocarrelli, L.) 129–142 [in Italian] (Franco-Angeli, Milan, 2012).
95. Beltrano, M. C. *La rete agrometeorologica nazionale del Ministero per le Politiche Agricole e Forestali*, http://www.agrometeorologia.it/documenti/Aiam1999/13_Beltrano.pdf [in Italian] (1999).
96. Larsen, D. J., Miller, G. H. & Geirsdóttir, Á. Asynchronous Little Ice Age glacier fluctuations in Iceland and European Alps linked to shifts in subpolar North Atlantic circulation. *Earth Planet. Sci. Lett.* **380**, 52–59 (2013).
97. Sadori, L. *et al.* Climate, environment and society in Southern Italy during the last 2000 years: A review of the environmental, historical and archaeological evidence. *Quat. Sci. Rev.* **136**, 173–188 (2016).

Acknowledgements

F.C.L. was supported by the Swedish Research Council (Vetenskapsrådet, Grant No. 2018-01272). The publication cost was covered by Stockholm University.

Author Contributions

N.D. and G.B. developed the original research design and collected and analysed the historical documentary data. N.D., F.C.L. and G.B. wrote the article together and made the interpretations together. F.C.L. helped to place the research topic and the conclusions in a larger research context. All authors reviewed the final manuscript.

Additional Information

Supplementary information accompanies this paper at <https://doi.org/10.1038/s41598-019-46207-7>.

Competing Interests: The authors declare no competing interests.

Publisher's note: Springer Nature remains neutral with regard to jurisdictional claims in published maps and institutional affiliations.



Open Access This article is licensed under a Creative Commons Attribution 4.0 International License, which permits use, sharing, adaptation, distribution and reproduction in any medium or format, as long as you give appropriate credit to the original author(s) and the source, provide a link to the Creative Commons license, and indicate if changes were made. The images or other third party material in this article are included in the article's Creative Commons license, unless indicated otherwise in a credit line to the material. If material is not included in the article's Creative Commons license and your intended use is not permitted by statutory regulation or exceeds the permitted use, you will need to obtain permission directly from the copyright holder. To view a copy of this license, visit <http://creativecommons.org/licenses/by/4.0/>.

© The Author(s) 2019