



HAL
open science

Designing a tool for the sustainability evaluation of intra-urban agriculture using a participatory approach

Paola Clerino, Agnès Lelièvre Fargue-Lelièvre

► To cite this version:

Paola Clerino, Agnès Lelièvre Fargue-Lelièvre. Designing a tool for the sustainability evaluation of intra-urban agriculture using a participatory approach. 10. IALE World Congress 2019, Jul 2019, Milan, Italy. , 2019. hal-02318310

HAL Id: hal-02318310

<https://hal.science/hal-02318310>

Submitted on 2 Dec 2022

HAL is a multi-disciplinary open access archive for the deposit and dissemination of scientific research documents, whether they are published or not. The documents may come from teaching and research institutions in France or abroad, or from public or private research centers.

L'archive ouverte pluridisciplinaire **HAL**, est destinée au dépôt et à la diffusion de documents scientifiques de niveau recherche, publiés ou non, émanant des établissements d'enseignement et de recherche français ou étrangers, des laboratoires publics ou privés.

Designing a tool for the sustainability evaluation of intra-urban agriculture using a participatory approach

Paola Clérino, Agnès Lelièvre

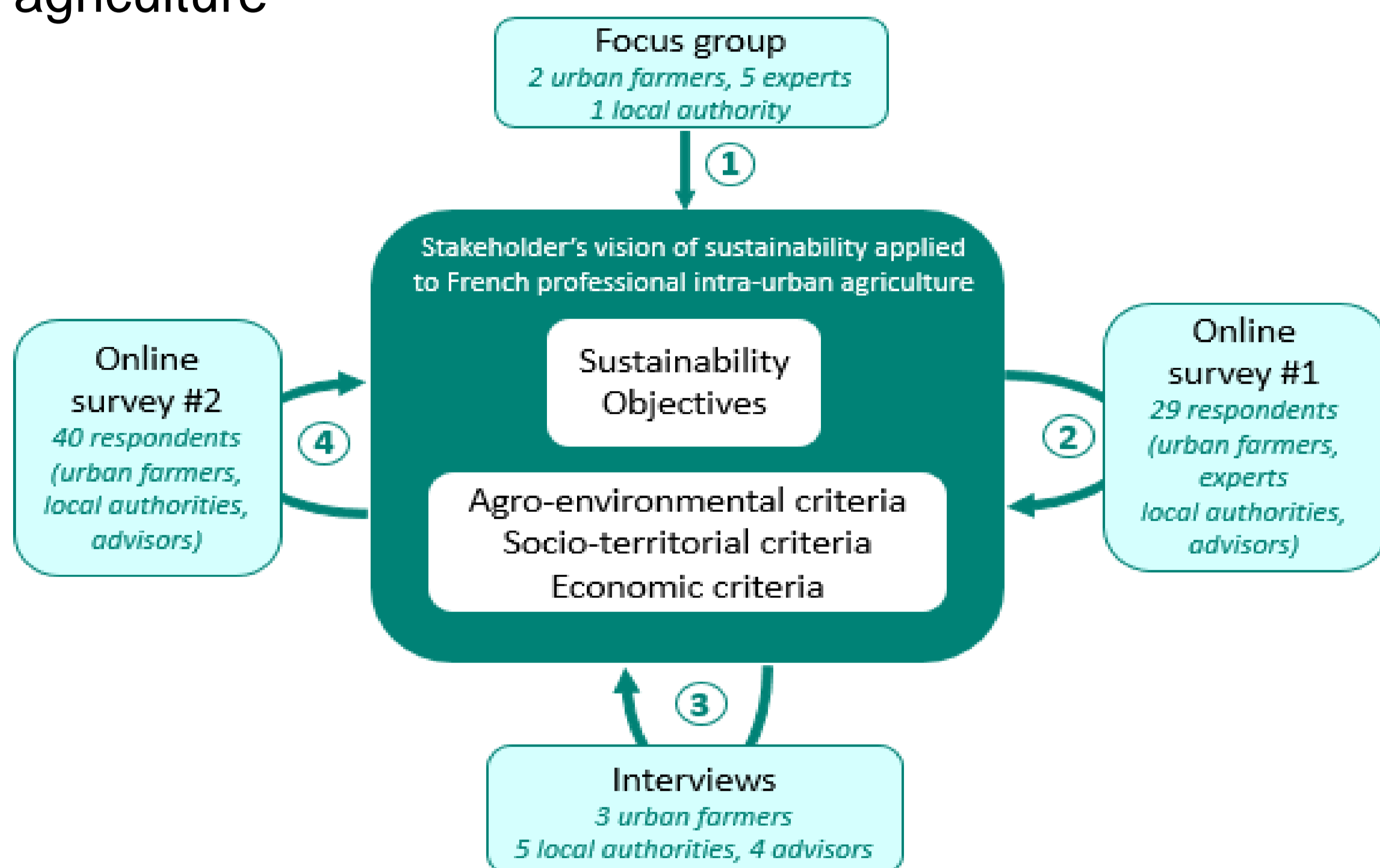
Introduction

Urban agriculture is presented as one of the solutions to ensure sustainable urban development, based on the multidimensional benefits it provides. However, the evaluation of urban farms cannot be carried out by using existing sustainability assessment tools designed for rural farm. Intra-urban agriculture requires a specific tool to assess its sustainability, taking into account the specificities of the urban context, such as pollution management or land scarcity. The design of such a tool needs involving stakeholders and especially future users in order to ensure that their diverse visions of sustainability and their needs are included.



Methods

Participatory process to elaborate sustainability objectives and criteria for professional intra-urban agriculture



Diagnosis of the uses of criteria to select and create intra-urban farms by decision makers.

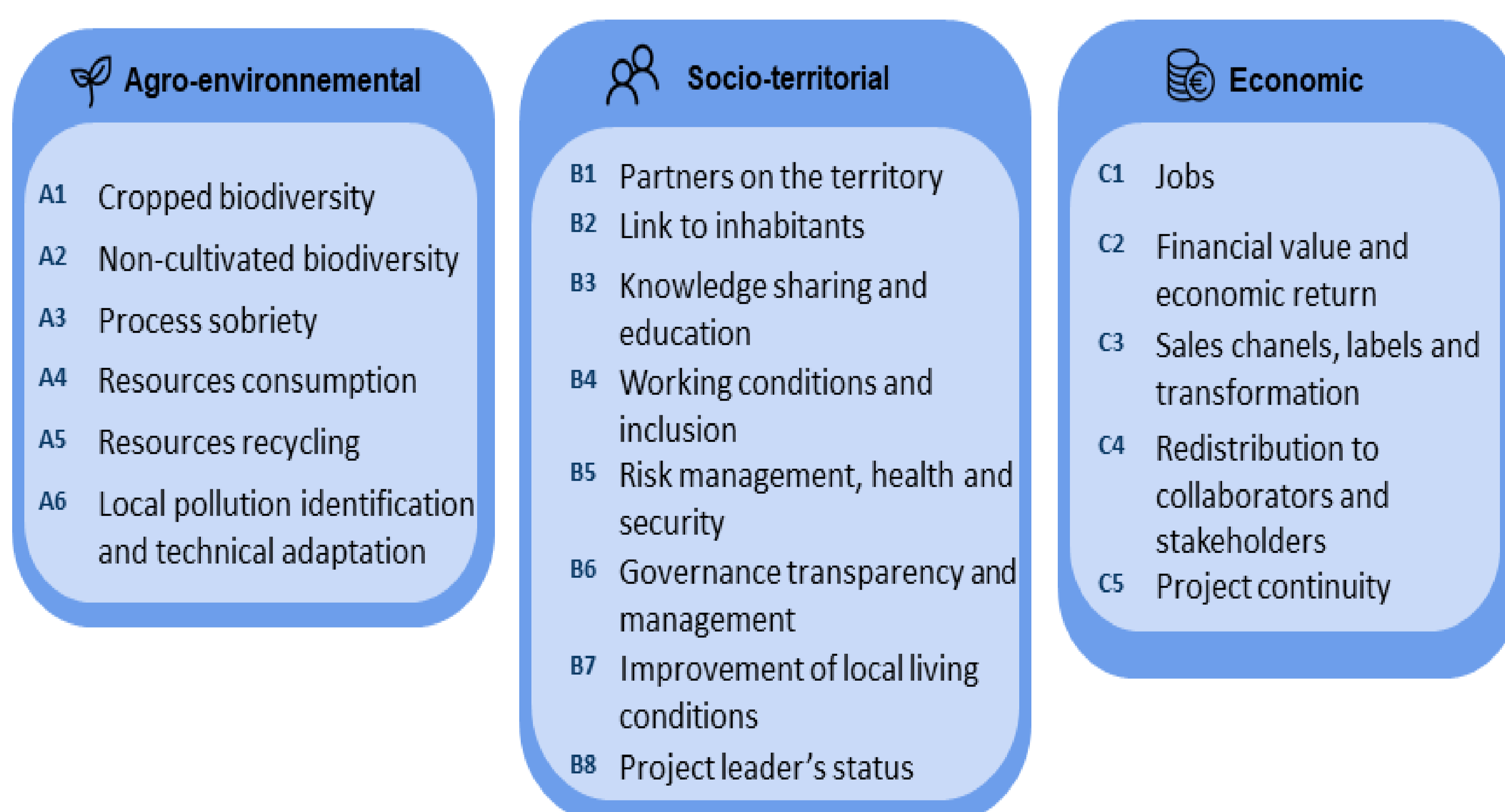
Which criteria or indicators do they use in current working situation ?

Around 25 semi-directive interviews planned over French territory

- Public institutions (city councils, metropolitan councils, public financing institutions)
- Social housing stakeholders
- Consulting firms
- Architects
- Urban farmers
- Urban planning agencies
- Wholesale and mass retail stakeholders
- Regulatory institutions

Results and perspectives

Need for an evaluation tool intended for decision makers providing land, investments or technical expertise to urban farms



Interviews in progress (20 realized)

Preliminary results:

- No indicators and no tool currently used
- Environmental criteria mentioned but not considered as key criteria for decision
- Social and/or economic criteria always considered as key criteria for decision
- Innovation criteria often mentioned as decisive
- Stakeholders often request the support of UA experts for decision process

=> Participatory conception of a tool to assess sustainability of intra-urban farms will take place in 2020-2021, involving stakeholders of the French UA sector

Literature

Cerf M. et al. (2012). Participatory design of agricultural decision support tools : taking account of the use situations. *Agronomy for Sustainable Development*, 899-910.

Lairez J. et al. (2015). Agriculture et développement durable - Guide pour l'évaluation multicritères. *Quae - Educagri*, 232 pages.

Lazard J. et al. (2008). *Guide de co-construction d'indicateurs de développement durable en aquaculture*. EVAD.

Zahm F. et al. (2019). Evaluer la durabilité des exploitations agricoles. La méthode IDEA v4, un cadre conceptuel combinant dimensions et propriétés de la durabilité. *Cahiers Agricultures*, 1-10.

Contacts

Paola CLÉRINO, Agnès LELIÈVRE

paola.clerino@agroparistech.fr – agnes.lelievre@agroparistech.fr

UMR INRA-AgroParisTech SAD-APT

AgroParisTech

16 rue Claude Bernard, F-75231 Paris Cedex 05, FRANCE



www.agroparistech.fr