



HAL
open science

Reverse conductivity for water transport and related anatomy in fine roots of six temperate tree species -a potential limitation for hydraulic redistribution

Benjamin D Hafner, Thorsten E E Grams, Benjamin D Hesse

► To cite this version:

Benjamin D Hafner, Thorsten E E Grams, Benjamin D Hesse. Reverse conductivity for water transport and related anatomy in fine roots of six temperate tree species -a potential limitation for hydraulic redistribution. *Journal of Plant Hydraulics*, 2019, 6. hal-02317485

HAL Id: hal-02317485

<https://hal.science/hal-02317485>

Submitted on 16 Oct 2019

HAL is a multi-disciplinary open access archive for the deposit and dissemination of scientific research documents, whether they are published or not. The documents may come from teaching and research institutions in France or abroad, or from public or private research centers.

L'archive ouverte pluridisciplinaire **HAL**, est destinée au dépôt et à la diffusion de documents scientifiques de niveau recherche, publiés ou non, émanant des établissements d'enseignement et de recherche français ou étrangers, des laboratoires publics ou privés.



Reverse conductivity for water transport and related anatomy in fine roots of six temperate tree species – a potential limitation for hydraulic redistribution

Benjamin D. Hesse, Benjamin D. Hafner, Thorsten E. E. Grams

Technical University of Munich, Department of Ecology and Ecosystem Management - Chair for Ecophysiology of Plants, Hans-Carl-von-Carlowitz Platz 2, 85354 Freising, Germany.

Corresponding author: Benjamin D. Hesse (benjamin.hesse@tum.de)

Date of submission: 8 May 2019

Date of publication: 9 September 2019

Key words

Climate change, drought stress, water flow, Sycamore maple (*Acer pseudoplatanus*), Sweet chestnut (*Castanea sativa*), Norway spruce (*Picea abies*), Douglas fir (*Pseudotsuga menziesii*), English oak (*Quercus robur*), European beech (*Fagus sylvatica*)

Abstract

Hydraulic redistribution (HR), the passive reallocation of water along plant structures following a water potential gradient, is an important mechanism for plant survival under drought. For example, trees with deeper roots reallocate water from deeper moist to shallower, drier soil layers sustaining their upper fine root system. The relevance of HR for temperate forest ecosystems is hardly investigated. Both environmental and tree internal factors limiting the capacity for HR, such as low water potential gradients or root anatomy, respectively, are not well understood. Here we investigate fine root anatomy and related capacity for reverse flow of water of six temperate tree species, i.e. *Acer pseudoplatanus*, *Castanea sativa*, *Fagus sylvatica*, *Picea abies*, *Pseudotsuga menziesii* and *Quercus robur* both in forward and reverse flow direction. Additionally, anatomy of primary and secondary roots was analyzed, to test the hypotheses that root anatomy is similar in primary and secondary roots (H1) and conductivity for forward and reverse flow of water in fine roots is identical (H2). In contrast to the two conifer species, most anatomical parameters, e.g. hydraulic conduit diameter and conduit density, were distinctly different between primary and secondary roots in the angiosperms. Therefore, H1 was not supported for angiosperm trees. The reverse flow of water in fine roots was reduced by approx. 40 % compared to the forward flow in angiosperms, while there was no difference in the conifers. Thus, H2 was confirmed for conifers while there was a significant difference for angiosperms. This reduction may be caused by vessel structure (e.g. tapering or secondary thickening elements), or perforation plate and pit architecture (e.g. width of aperture opening). Because of the reduced conductivity of reverse water flow, the ability of angiosperm trees to redistribute water along their root system might be lower than expected.

Introduction

Prolonged and intense drought periods are one of the consequences of ongoing climate change (IPCC 2007, 2014) as predicted by most climate change scenarios (Burke *et al.*, 2006). Central Europe experienced extreme droughts during summers 2003, 2015 and 2018 (Ionita *et al.*, 2017; Hänsel *et al.*, 2019). The ramifications of such extreme events were drastic for temperate European (Ciais *et al.*, 2005; Leuzinger *et al.*, 2005) and North American forests (Asner *et al.*,

2016; Hartmann *et al.*, 2018). Long and severe drought periods often lead to a severe shortage of water for plants which may result in hydraulic failure, the collapse of the water conducting system, often resulting in tree death (Brodribb and Cochard, 2009; Urli *et al.*, 2013). In particular trees as long-living organisms possess versatile strategies against drought such as hydraulic (Tomasella *et al.*, 2017a) or photosynthetic acclimation (Watkinson *et al.*, 2003). Another strategy is hydraulic redistribution (HR) of water from moist (e.g. deeper) to drier soil layers via the root system (Neumann and Cardon, 2012; Prieto *et al.*, 2012), a phenomenon hardly explored for temperate forests (Emerman and Dawson, 1996). If deeper roots have access to more water-saturated soil layers, the complete root system will equilibrate at high water potentials, in particular during the night when stomata close. The water potential gradient within the soil is the driving factor for the redistribution of water towards the soil layers with lower water potential along the root. A wide range of plant species, including conifers and angiosperm trees, are able to redistribute water (e.g. Prieto *et al.*, 2012; Hafner *et al.*, 2017), while the amount of redistributed water can strongly vary (from 0.04 to 4 mm water per day) even within one ecosystem (Neumann and Cardon, 2012). Nevertheless, on average HR water can represent up to 15 % of water used for transpiration (Neumann and Cardon, 2012) or up to 80% of root water (Hafner *et al.*, 2017) and therefore play an important role for the water balance of plants. Several empirical studies report a suit of factors that define the amount of HR and consequently are used in model predictions (Neumann and Cardon, 2012 and citations within). Among these are ‘external’ factors, such as the water potential gradient (Ryel *et al.*, 2004) or root-soil contact and ‘internal’ driving factors, such as root conduit anatomy (Hafner *et al.*, 2017). However, fine root anatomy and related hydraulic conductivities are hardly studied. Especially conductivity measurements of roots are scarce and in the reverse direction, i.e. from the rootstock to the fine roots as it is the case of HR, unreported.

In a conducting element, the diameter of the pipes is the most confining factor for the amount of transported water, as given by the law of Hagen-Poiseuille. Thus, roots with high water transport capacity should also redistribute more water. During HR water flows against the “usual” direction; nevertheless, we expect the conductivity of fine roots for water to be independent of its direction. To this end, we investigated the fine root systems of six temperate tree species, i.e. Norway spruce (*Picea abies* L. Karst), European beech (*Fagus sylvatica* L.), sycamore maple (*Acer pseudoplatanus* L.), sweet chestnut (*Castanea sativa* Mill.), English oak (*Quercus robur* L.) and Douglas fir (*Pseudotsuga menziesii* Mirb. Franco). We chose these species not only for their importance in forestry and natural forests stands, but also for their differences in anatomy. As spruce and Douglas fir are conifers, they have only tracheids as conductive elements. Among the four angiosperms, two species were stem-diffuse porous (beech and maple) and two had a ring porous stem anatomy (chestnut and oak). Hence, we examined a broad spectrum in conduit sizes and wood traits, which are controlled by genetic and environmental factors (Schreiber *et al.*, 2015). To test whether root order has an influence on anatomy, we compared primary roots with older, secondary roots, hypothesizing that fine root anatomy is similar in primary and secondary roots (H1). Closely related to anatomy is the root conductivity for water. As the reverse flow of water in roots could be an important limitations for HR, we compared the conductivity of forward and reverse flow in secondary roots of the six study tree species. Based on the analogy between roots and pipes and the law of Hagen-Poiseuille we hypothesized that there is no difference between forward and reverse water flow in fine roots (H2).

Materials and Methods

Plant material

The study was done on two – four years old saplings of two conifers (*P. abies* and *P. menziesii*) and four angiosperms (*A. pseudoplatanus*, *C. sativa*, *F. sylvatica* and *Q. robur*). Plants were potted two years before the start of the experiment in potting soil (90 %, mixture of topsoil, compost, turf and lava (20 % organic matter; Wurzer Umwelt GmbH, Eitting, Germany) mixed with soil taken from respective native stands (10 %), except for Douglas fir which was potted the year before the experiment. During these two years, plants were kept in a greenhouse under near ambient climate conditions in Freising, Germany (48°23'57.98" N, 11°43'00.99" E).

Fine root anatomy in laser ablated cross-sections

Five individuals of each species were harvested prior of the experiment for assessments on fine root anatomy. Root systems were carefully freed of the soil and one sample of approx. 1 cm length was taken. The sample preparation and drying in different concentrations of ethanol (first 70 %, 95 % and finally 99 %) followed the protocol of Hafner *et al.*

(2017). Primary roots (diameter 0.23 ± 0.14 mm), with only primary growth, secondary roots (diameter 1.46 ± 0.50 mm) and stem segments (diameter 3.89 ± 0.70 mm) were cut by laser ablation tomography (Chimungu *et al.*, 2014) with cross-sections photographed continuously (resolution: 25400 dpi, figure 1). The complete cross-section was analyzed for primary roots, whereas for secondary roots three areas of interest (AOI, each area 0.5 mm^2) of a square shape were selected randomly and representatively in each cross-section and analyzed for their xylem conduit size and distribution. In each AOI, the xylem conduits were marked by hand on an extra layer using GIMP (version: 2.8.16, GNU Image Manipulation Program, The GIMP Team, <https://www.gimp.org>). The conduits were then analyzed with ImageJ (Version 1.47t, Wayne Rasband, National Institutes of Health, Bethesda, USA) for the area (C_A , in μm^2) of each xylem element. Calculations and analyses of the pictures followed Scholz *et al.* (2013) and Zanne *et al.* (2010). From the conduit area, the equivalent circle diameter (D , in μm) was calculated:

$$D = \sqrt{\frac{4C_A}{\pi}} \quad (1)$$

Via the equivalent circle diameter, the hydraulic diameter (D_H in μm) was calculated following Tyree and Zimmermann (2002), (equation 2). The hydraulic diameter is the weighted diameter of vessels that contribute to the overall conductivity.

$$D_H = \left(\frac{\sum D^4}{N} \right)^{0.25} \quad (2)$$

Conduit density (C_D , in mm^{-2}) was calculated by dividing the number of conduits by the respective AOI. The vessel lumen fraction (F , unitless) shows the proportion of an area covered by vessel lumen (see equation 3). The higher F is, the lower would be the support tissue fraction, and it can be used as an indicator for mechanical strength and hydraulic conductivity (Jacobsen *et al.*, 2005, Preston *et al.*, 2006). It is calculated as:

$$F = C_D * C_A \quad (3)$$

The vessel composition index as introduced by Zanne *et al.* (2010, S , in mm^4) indicates how resistant a plant is against cavitation. Low values indicate a higher resistance against drought and frost induced cavitation, but also a less efficient water transport (Zanne *et al.*, 2010).

$$S = \frac{C_A}{C_D} \quad (4)$$

For the angiosperms, the vessel grouping index, V_G , (Carlquist, 2001) was assessed additionally. The V_G gives an idea about the number of solitary versus grouped vessels (see equation 5). The total number of vessels (N_{vessels}) is divided by the number of vessel groups ($N_{\text{groupings}}$), where solitary vessels also count as a group. A V_G of one indicates that only solitary vessel are present.

$$V_G = \frac{N_{\text{vessels}}}{N_{\text{groupings}}} \quad (5)$$

Conductance measurements and conductivity calculations

Five plants per species were harvested between July and September 2017. The whole root system was quickly and carefully cleared from the soil and one subsample, after the first branching and without side roots, was cut under water. We chose roots with a similar diameter (average diameter was 2.6 ± 0.7 mm) to the secondary roots used for anatomical measurements (average diameter 1.46 ± 0.50 mm). The sample was then cut several times under water, until it reached about the double of the desired length. Next, the sample was cut in half and randomly one piece was used for assessment of the forward conductivity and the remaining piece for the reverse conductivity. To measure the hydraulic conductance (Cochard *et al.*, 2013), the xylem embolism meter (XYL'EM, BRONKHORST France S.A.S., Montigny-Les-Cormeilles, France) was used. The bark was removed on the side that was inserted into the XYL'EM apparatus and from each side of every sample several thin cuts were made and preserved for the assessment of the conductive area. Every conductance measurement was made at approx. 7 kPa and with degassed, filtered ($0.2 \mu\text{m}$) water with 10 mM KCl and 1 mM CaCl_2 added (Barigah *et al.*, 2013). This happened to avoid clogging and the

formation of microbubbles within the xylem elements. Salts were added to mimic the ion concentration of natural xylem water, to avoid swelling of cell walls. After each measurement, every sample was flushed several times at approx. 0.1 MPa for 10 minutes and measured until there was no further increase in measured conductance (K_{max} , $\text{kg MPa}^{-1} \text{s}^{-1}$, for details see Tomasella *et al.* (2017b)). Subsequently, the length (L [m], mean over all species: 0.027 ± 0.006 m) of each sample was measured with a caliper for conductivity calculations. The thin sections, cut from each sample before the conductance measurements, were photographed using a stereo-microscope and analyzed for the conductive area (A_{cond} in m^2) using the software ImageJ 1.47t. From A_{cond} the diameter (D_{cond} in mm) for every sample was calculated. There was no difference between the six species in D_{cond} (average diameter was 2.6 ± 0.7 mm) and no difference between the distal and proximal diameter of each segment ($P = 0.97$). Maximum specific hydraulic conductivity for both forward ($k_{s_max_f}$, $\text{kg s}^{-1} \text{m}^{-1} \text{MPa}^{-1}$) and reverse conductivity ($k_{s_max_r}$, $\text{kg s}^{-1} \text{m}^{-1} \text{MPa}^{-1}$) was calculated as:

$$k_{s_max_f/r} = \frac{K_{max} * L}{A_{cond}} \quad (6)$$

Forward and reverse hydraulic conductivity of stems ($k_{s_max_stem_f}$ and $k_{s_max_stem_r}$, respectively) was assessed on additional plants of maple and oak. Two consecutive pieces of the stems were measured following the same procedure as for the roots.

Statistics

The data were statistically analyzed using R (version 3.5.2, R Development Core Team, 2008) in RStudio (version 1.1.442, RStudio Team, 2015). A linear mixed effect model (lme function of the package: nlme, version: 3.1-137) was used to test for differences in the conductivity and anatomy parameters. For every model, the residuals were tested for normality (shapiro test of the package: stats, version: 3.5.2) and for homogeneity of variances (levene test of the package: car, version 3.0-2). For the conductivity, the plant species, the conductivity direction (forward vs. reverse, $n = 5$ for both directions and each species) and their interaction were used as fixed factors and the plant pot as a random factor. For the anatomy, plant species, root orders (primary vs. secondary roots, $n = 5$ for both orders and each species) and their interaction were used as fixed factors and the root system from which the samples were taken as the random factor, for all examined anatomy parameters. If the lme showed any significances, we used a post-hoc test (emmeans function with Tukey correction of the package: emmeans, version: 1.3.1) to test for differences between the single groups. Data in text and tables is given as the mean \pm 1 SD.

Results

Anatomy of primary and secondary roots

For the two conifers, within and between, there was no difference in the hydraulic diameter (D_H) between primary and secondary roots ($P = 0.86$, overall mean: $10.9 \pm 2.1 \mu\text{m}$, figure 2). For all angiosperms, primary roots had significantly smaller D_H compared to secondary roots ($P < 0.05$, figure 2). Among angiosperms, D_H in primary roots did not differ ($P = 0.47$, overall mean $19.4 \pm 4.9 \mu\text{m}$) (figure 2). For secondary roots, angiosperms showed significant differences between the species ($P < 0.01$, figure 2), with chestnut ($47.0 \pm 14.0 \mu\text{m}$) having the largest D_H , followed by oak ($37.1 \pm 3.2 \mu\text{m}$) and maple ($29.9 \pm 2.7 \mu\text{m}$) and beech ($29.2 \pm 3.5 \mu\text{m}$) having the smallest D_H . Overall, angiosperms showed a significantly larger D_H than conifers for both root orders ($P < 0.001$, figure 2).

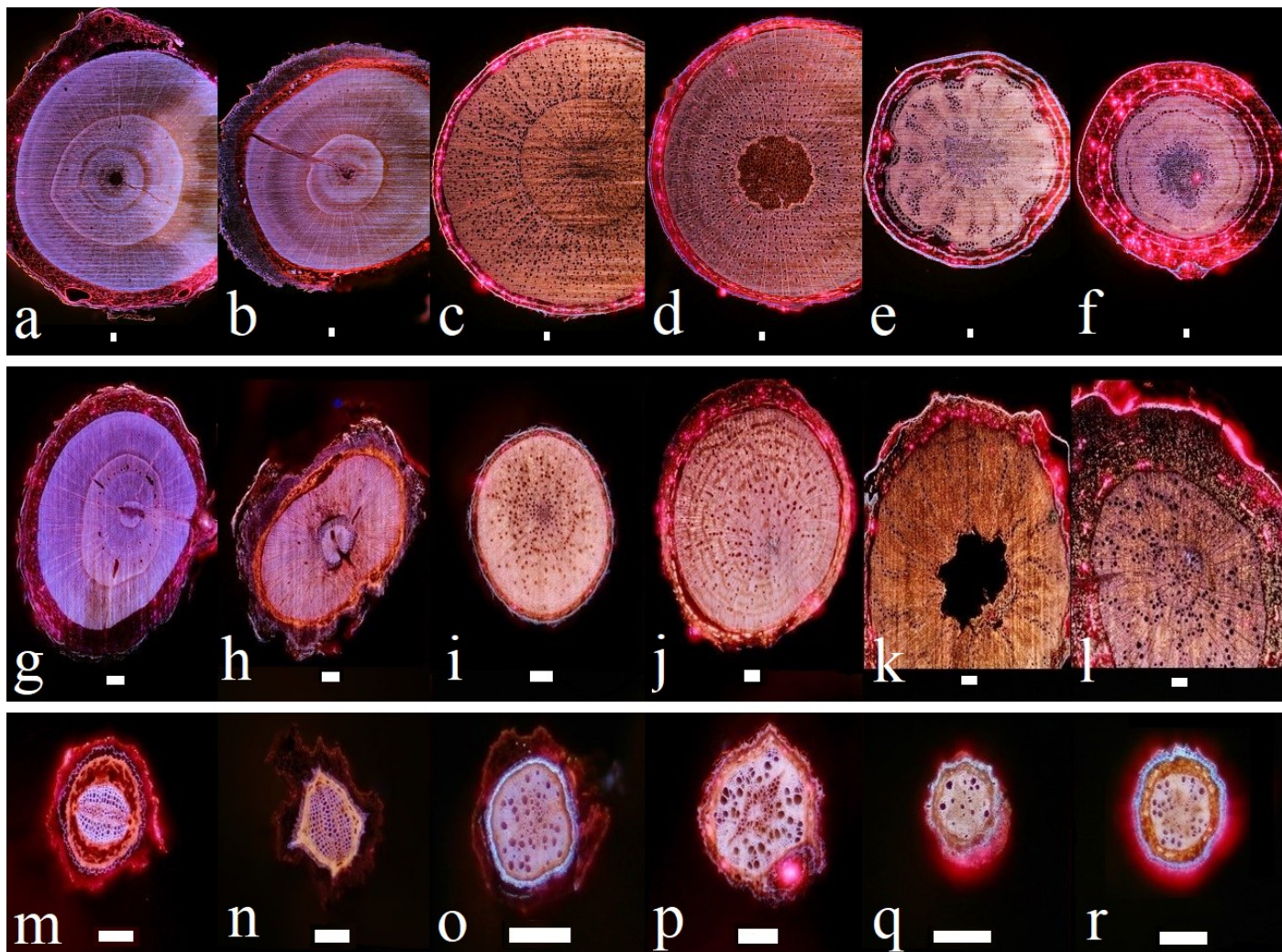


Figure 1: Examples of laser ablated cross-sections.

Laser ablated cross-sections of stem segments (upper row), secondary (middle row) and primary (lower row) roots of spruce (a, g & m), Douglas fir (b, h & n), beech (c, i & o), maple (d, j & p), oak (e, k & q) and chestnut (f, l & r). Bars represent 1000 μm for a-f and 100 μm for g-r.

The same pattern was found for the conduit diameter (D , table 1). No differences in D were found for conifers, neither between root orders nor between the two species (table 1). Secondary roots in angiosperms showed on average 1.9 times larger D than primary roots (table 1). While no differences in D were found in primary roots between the angiosperm species ($P > 0.05$, table 1), in the secondary roots, chestnut showed significant larger D , than oak, being in between, and beech and maple showing the smallest D (table 1).

Conduit density (C_D) of conifers was 17 times in primary and 32 times in secondary roots higher than of angiosperms ($P < 0.001$, table 1). While spruce tended to a higher C_D than Douglas fir, especially in primary roots, there was no intraspecific difference between primary and secondary roots within both species (table 1). For angiosperms, C_D was on average about five times higher in primary roots compared to secondary roots ($P < 0.05$, table 1), however, no differences were found between the four species in each root order, respectively (table 1).

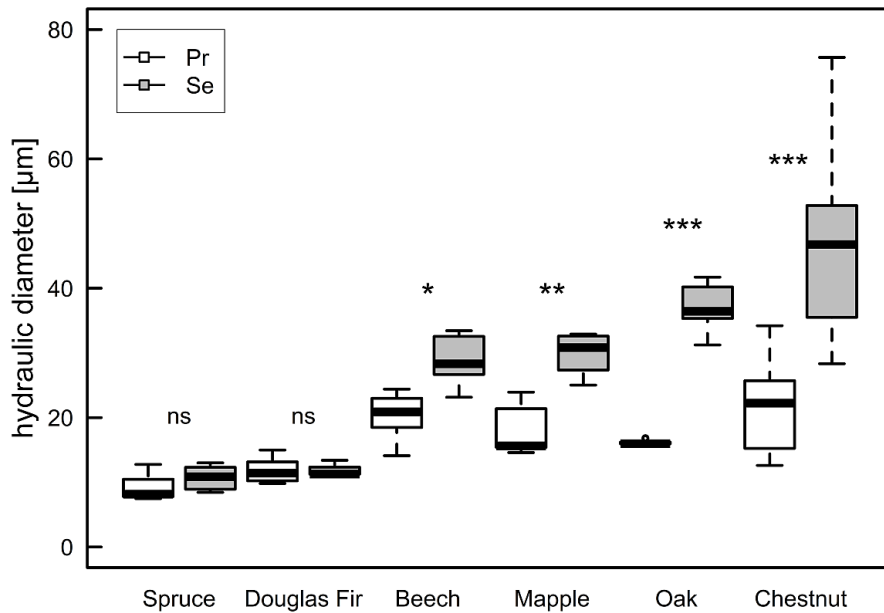


Figure 2: Mean hydraulic diameter per species

Hydraulic diameter (D_H) in primary roots (white) and secondary roots (grey); asterisks indicate significant differences within one species between primary and secondary roots (*** < 0.001, ** < 0.01, * < 0.05, ns > 0.05).

For the vessel lumen fraction (F) and the vessel composition index (S) a similar pattern was found. For both indices, no differences were found in primary roots within the four angiosperm and the two conifers, respectively (table 1). However, conifers tended to have double the amount of vessel lumen (F) (0.25 ± 0.07) than angiosperms (0.10 ± 0.05). In primary roots on the other hand, conifers ($3.05E-8 \pm 2.13E-8 \text{ mm}^4$) had an almost sixty times lower vessel composition index (S) than angiosperms ($1.76E-6 \pm 1.21E-6 \text{ mm}^4$). Overall, F for angiosperms was similar in primary roots (0.10 ± 0.05) compared to secondary roots (0.07 ± 0.03 , table 1) and the same for conifers (0.25 ± 0.07 vs. 0.25 ± 0.07). For angiosperms, the vessel composition index (S) of secondary roots ($2.06E-5 \pm 3.12E-5 \text{ mm}^4$) was on average about 19 times higher compared to primary roots ($1.10E-6 \pm 1.22E-6 \text{ mm}^4$) ($P < 0.001$, table 1), in particular in oak. Conversely, conifers showed very similar S in both root orders, but 37 times lower S in primary and 623 times lower S in secondary roots compared to angiosperms (table 1). Despite the high C_D in primary roots, only maple showed significant vessel grouping (V_G in table 1). In primary roots of maple, V_G was more prominent than in secondary roots (2.89 ± 0.33 to 2.01 ± 0.22 , respectively). The three other angiosperms did not show any vessel grouping (table 1), neither in primary roots (1.09 ± 0.05) nor in secondary roots (1.11 ± 0.04).

Root hydraulic conductivity

The diameter of the root pieces used for forward ($2.35 \pm 0.95 \text{ mm}$) and reverse conductivity ($2.36 \pm 1.00 \text{ mm}$) did not show any significant difference. Both the flow direction and the plant species had a significant influence on the hydraulic conductivity (figure 3a). In forward direction, the species with the highest conductivity ($k_{s_max_f}$) was chestnut ($2.39 \pm 1.19 \text{ kg s}^{-1} \text{ m}^{-1} \text{ MPa}^{-1}$), followed by oak ($2.05 \pm 0.43 \text{ kg s}^{-1} \text{ m}^{-1} \text{ MPa}^{-1}$) and beech/ maple with similar values ($1.35 \pm 0.24 \text{ kg s}^{-1} \text{ m}^{-1} \text{ MPa}^{-1}$ and $1.21 \pm 0.29 \text{ kg s}^{-1} \text{ m}^{-1} \text{ MPa}^{-1}$, respectively). Douglas fir and spruce had relatively low and similar values ($0.32 \pm 0.12 \text{ kg s}^{-1} \text{ m}^{-1} \text{ MPa}^{-1}$ and $0.28 \pm 0.09 \text{ kg s}^{-1} \text{ m}^{-1} \text{ MPa}^{-1}$, respectively). The same pattern was found for the reverse direction ($k_{s_max_r}$, figure 3a). For the two conifers there was no difference between the forward and the reverse conductivity, whereas the four angiosperms showed a highly significant difference (figure 3a). The reverse conductivity was reduced by $39 \pm 11 \%$ compared to the forward conductivity in angiosperms, irrespective of species (figure 3b). Conversely, hydraulic conductivity in stems ($k_{s_max_stem_f}$ and $k_{s_max_stem_r}$) of maple and oak was not different between forward and reverse direction ($P = 0.30$, figure 3c). Concurring with the results in the roots, oak had a higher conductivity in stems than maple in both directions ($P < 0.001$, figure 3c).

A) Root order:		Primary				
species	Spruce	Douglas Fir	Beech	Maple	Oak	Chestnut
D [μm]	8.5 \pm 2.3 a ns	11.0 \pm 2.0 a ns	19.2 \pm 3.6 b *	16.6 \pm 4.3 b ***	15.3 \pm 0.6 b ***	20.9 \pm 7.2 b ***
C _D [mm^{-2}]	4408 \pm 1467 a ns	2755 \pm 747 b ns	403 \pm 261 c *	591 \pm 265 c **	298 \pm 175 c *	375 \pm 216 c **
F	0.23 \pm 0.03 a ns	0.26 \pm 0.09 a ns	0.10 \pm 0.03 b ns	0.11 \pm 0.04 b ns	0.06 \pm 0.03 b ns	0.12 \pm 0.07 b ns
S [mm^4]	1.8E-8 \pm a 1.9E-8 ns	3.9E-8 \pm a 2.2E-8 ns	1.0E-6 \pm b 6.3E-7 ***	6.8E-7 \pm b 8.7E-7 ***	8.7E-7 \pm b 6.0E-7 ***	1.7E-6 \pm b 2.1E-6 ***
V _G	-	-	1.10 \pm 0.02 a ns	2.89 \pm 0.33 b ***	1.13 \pm 0.05 a ns	1.05 \pm 0.04 a ns

B) Root order:		Secondary				
species	Spruce	Douglas Fir	Beech	Maple	Oak	Chestnut
D [μm]	10.0 \pm 1.8 A ns	11.3 \pm 1.2 A ns	27.9 \pm 3.8 B *	27.4 \pm 2.7 B ***	35.0 \pm 3.5 BC ***	44.2 \pm 13.8 C ***
C _D [mm^{-2}]	3091 \pm 595 A ns	2681 \pm 414 A ns	121 \pm 69 B *	118 \pm 56 B **	54 \pm 20 B *	65 \pm 44 B **
F	0.24 \pm 0.09 A ns	0.27 \pm 0.04 A ns	0.07 \pm 0.03 B ns	0.07 \pm 0.03 B ns	0.05 \pm 0.02 B ns	0.08 \pm 0.02 B ns
S [mm^4]	2.8E-8 \pm A 1.5E-8 ns	3.8E-8 \pm A 1.2E-8 ns	6.8E-6 \pm B 3.9E-6 ***	6.4E-6 \pm B 3.7E-6 ***	2.1E-5 \pm BC 1.2E-5 ***	4.8E-5 \pm C 5.4E-5 ***
V _G	-	-	1.14 \pm 0.01 A ns	2.01 \pm 0.22 B ***	1.14 \pm 0.01 A ns	1.06 \pm 0.02 A ns

Table 1: Anatomical parameters

Anatomy parameters conduit diameter (D), conduit density (C_D), vessel lumen fraction (F), vessel composition index (S) and vessel grouping index (V_G) in primary (A) and secondary roots (B). Asterisks indicate significant differences within species between primary and secondary roots with *** < 0.001, ** < 0.01, * < 0.05 and ns > 0.05. Different letters indicate significant differences between species with small letters for primary roots and capital letters for secondary roots (values are given as the mean \pm 1 SD).

Discussion

In this study, reverse conductivity in fine roots was systematically tested for the first time. Opposing to H1, differences in several anatomical parameters (e.g. D_H, C_D, S) were found between young, primary and older, secondary roots. Furthermore, we found differences in the magnitude between forward and reverse hydraulic conductivity in fine roots of angiosperms, contradicting H2. Reverse conductivity was reduced by about 40 % compared to the forward conductivity.

Root anatomy of primary and secondary roots

Roots with predominantly primary growth, showed different xylem anatomical structures compared to older, secondary roots. Additionally, primary roots of rather unrelated species (e.g. angiosperm genera) were anatomically rather similar. Conversely, for older, secondary roots, clear differences between species were found in D, D_H and S. For the two conifers, the conduit size was consistent for both root orders, which is contradictory to findings along the stem to branches, where conduit size is decreasing (McCulloh and Sperry, 2005; Woodruff *et al.*, 2008). Therefore we accept H1 for the two conifer species. Additionally, anatomy of fine roots in conifers seems to be very similar to anatomy of twigs in many parameters (D and C_D, Tomasella *et al.*, 2017a). For the four angiosperm species, on the other hand, we found distinct differences between the two root orders, showing that with increasing age, roots seem to change their xylem anatomy. Especially the increase in diameter and the decrease in density of water conducting conduits is obvious. We therefore reject H1 for the four angiosperm species.

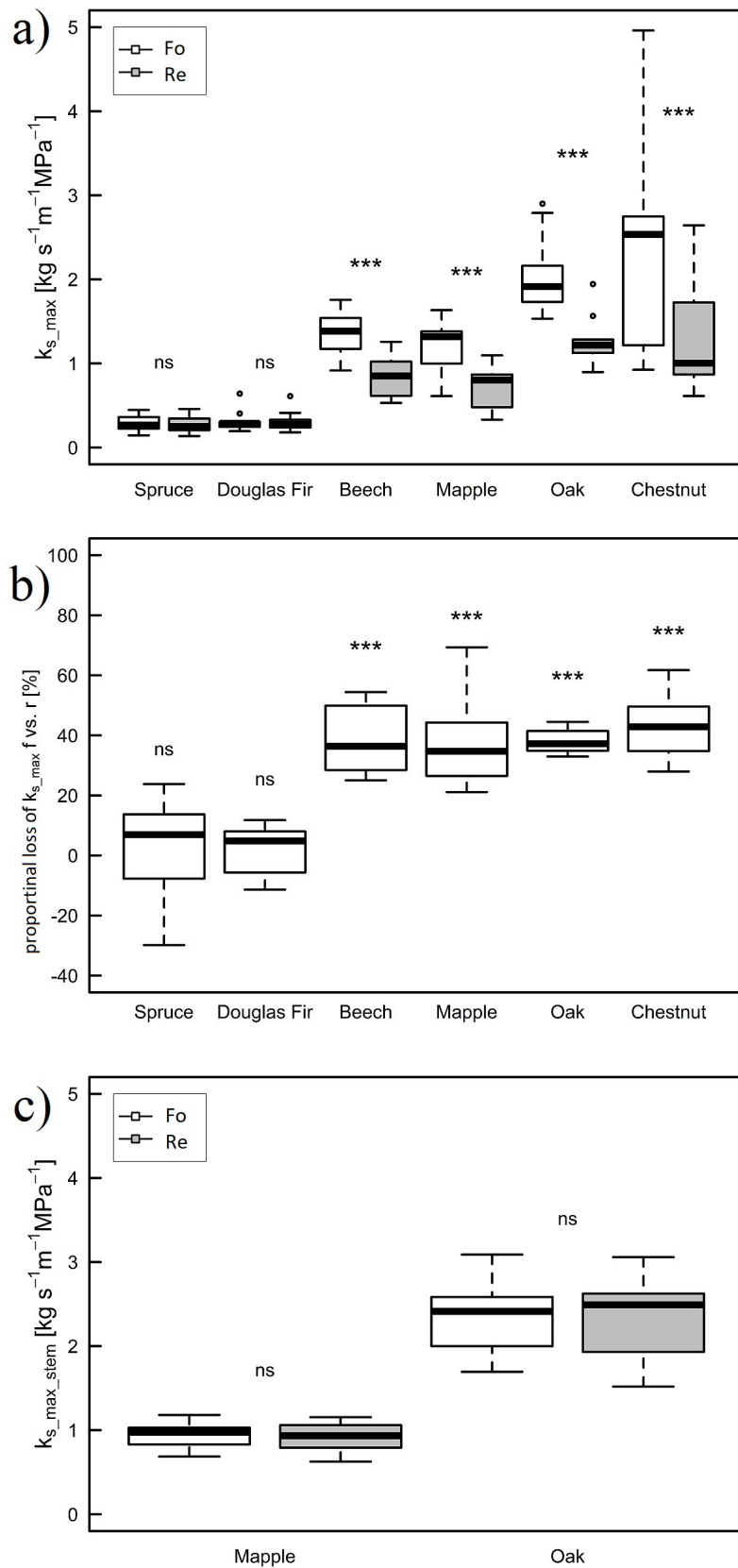


Figure 3: Maximum specific hydraulic conductivity and loss of conductivity.

Maximum specific hydraulic forward (white) and reverse (grey) conductivity of roots (k_{s_max} , a), proportional loss of conductivity of the reverse direction compared to forward direction in roots (proportional loss of k_{s_max} f vs. r, b) and hydraulic maximum specific forward (white) and reverse (grey) conductivity of stems ($k_{s_max_stem}$, c). Asterisks indicate significant differences within one species between forward and reverse conductivity (3a & c). In 3b asterisks indicate significant differences to zero (***) < 0.001, ns > 0.05).

Whereas conifers seem to be very conservative in their anatomy, angiosperms tend to be more plastic. Over the four angiosperms, the two stem ring porous species (chestnut and oak) showed bigger vessels in the roots than the two stem diffuse-porous species (maple and beech), which is consistent with anatomical measurements of the stem (McCulloh et al. 2010). However, vessel distribution in all analyzed fine roots seemed more diffuse-porous, i.e. even distribution of similar-sized conduits over the whole year-ring, including chestnut and oak, which is in conflict with their vessel arrangement in stems (Barbaroux and Bréda, 2002; Fonti and Garcia-Gontález, 2004). This may be related to the longer growth period of roots, depending on water availability and soil temperature (Tryon and Chapin, 1983) with vessels being formed over the whole root growing season unlike stem growth peaking in early summer (McDougal, 1916; Alvarez-Uria and Körner, 2007). Vessel density also supports the diffuse porous anatomy of roots, as no differences were found among angiosperm species, neither in the primary nor in the secondary roots. Typical vessel densities in stems for ring-porous species are at $52 \pm 17 \text{ mm}^{-2}$ (for 3-year-old oak from Steppe and Lemeur, 2007) and for diffuse-porous species at $872 \pm 113 \text{ mm}^{-2}$ (beech twigs, Tomasella et al., 2017a). In the roots the four angiosperm species showed values in between with on average 417 mm^{-2} in primary and 78 mm^{-2} in secondary roots despite their consistent diffuse-porous distribution of vessels. The higher vessel density in primary roots emphasizes the importance of vessel structures for the water transport in angiosperms (Sperry, 2003). At the same time the high density of vessels is at the expense of mechanical strength, which is more important for stems and coarse roots (Preston et al., 2006), as they need to withstand harsh compressive stress during storms and snow load (James et al., 2006). Vessel lumen fraction (F) in stems of angiosperms is around 0.136 (Zanne et al., 2010) and similar to those in fine roots (0.083 for both ages). Therefore, roots seem to build xylem with a similar amount of conductive area as stems. Otherwise, the vessel composition index (S) for angiosperms in primary roots is about 90 times and in secondary roots 5 times lower compared to aboveground values ($9.6\text{E-}5 \text{ mm}^4$ from Zanne et al. (2010)). Hence, the conductive area in angiosperm roots is composed of more but smaller conduits than in stems (Zanne et al., 2010). According to the vessel composition index, roots seem to follow a more conservative strategy, reducing the risk of embolisms at the cost of a lower water transport (Zanne et al., 2010), with primary roots being even more conservative than secondary roots. However, as roots face very different environmental conditions than stems/twigs, the vessel composition index might not be a useful tool to predict cavitation resistance in roots, especially as our measured species are all mesophilous with similar cavitation resistances (P_{50} of -2.2 MPa for *Acer pseudoplatanus* (Lens et al., 2011), -4.74 MPa for *Quercus robur* (Lobo et al., 2018) and -3.4 MPa for *Fagus sylvatica* (Tomasella et al., 2017a)). This could be an important issue under drought stress conditions, as hydraulic failure in the water up-taking organ would consequently kill the plant (Jackson et al., 2000). Therefore, the higher safety margin against embolisms in roots may be one strategy of plants to avoid hydraulic failure (Delzon and Cochard, 2014). Overall, stem anatomy is not a reliable proxy for root anatomy, especially for fine roots of angiosperms.

Reverse vs. forward hydraulic conductivity in roots

Direction of water flow in roots, i.e. forward or reverse, did not affect conductivity in conifer roots, yet for all angiosperms a 40 % reduction in the reverse compared to forward conductivity was found. Looking at the conductive system, the xylem, the main difference between the two groups are the existence of vessels, which are only in angiosperms (Lüttge et al., 2005). Hence, the anatomy/structure of vessel elements in angiosperm wood most likely plays a decisive role in the reduction of conductivity of reverse water flow. To our knowledge, only very few studies have dealt with vessel anatomy in detail. Deducted from this knowledge we identified four putative reasons for the conductivity reduction in reverse direction (figure 4).

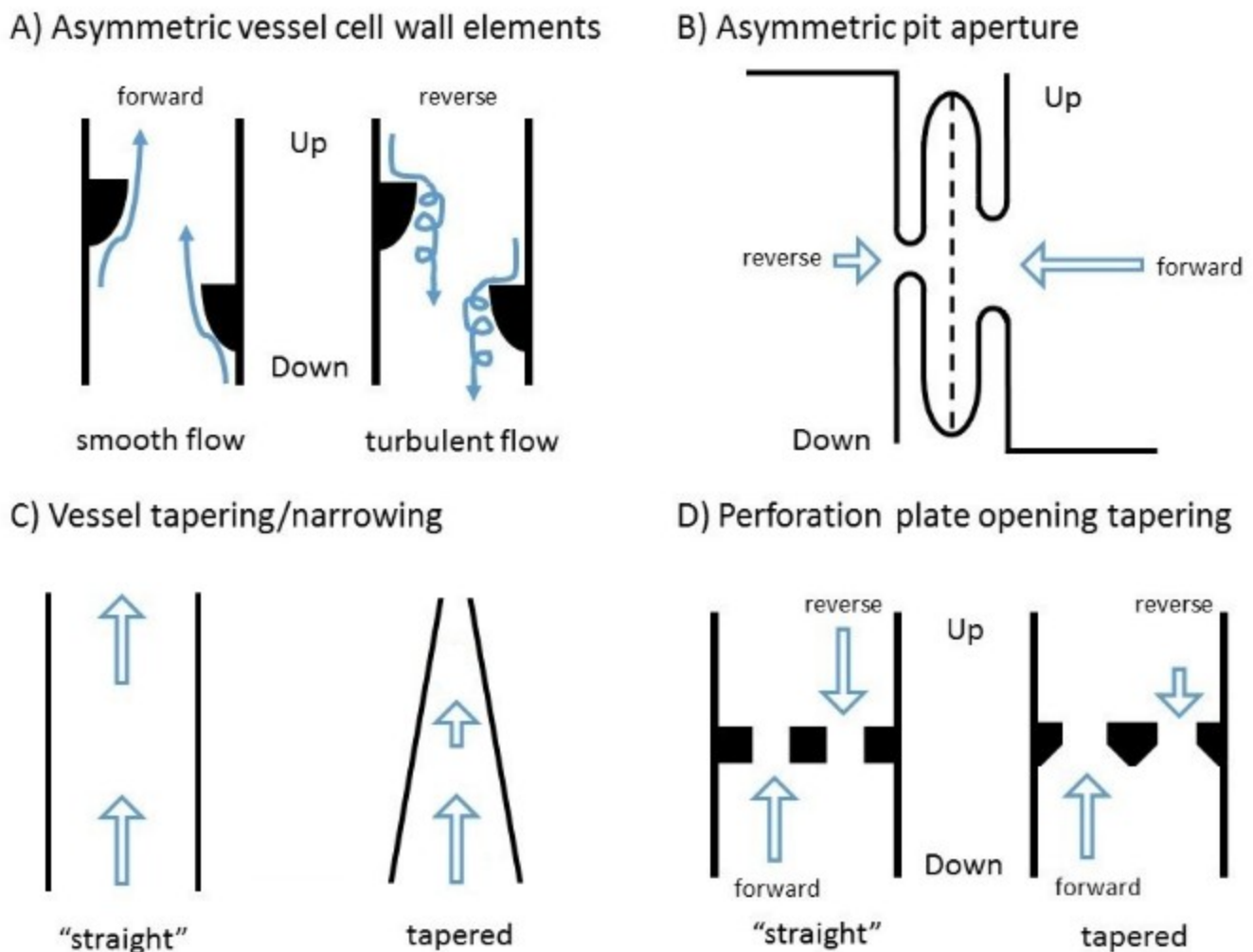


Figure 4: Schematic figures for possible anatomical causes of reverse conductivity reduction

Schematic figures for possible anatomical causes of reverse conductivity reduction: A) asymmetric vessel cell wall elements (e.g. warts), B) Asymmetric pit aperture, C) tapering/narrowing of vessels and D) tapering of perforation plate openings (Arrows indicate flow direction and the length is indicating the magnitude of the conductivity).

a) Asymmetric vessel warts

Independent of the type of thickening, vessels have elements pointing into the lumen (e.g. warts, Bailey, 1944; Ohtani *et al.*, 1983, Jansen *et al.*, 1998), possibly causing some disturbances in the conductivity. If these elements were asymmetric, they could cause higher resistance and turbulences for one flow direction (figure 4 a). Such disturbances in the conductivity would then hinder the reverse flow (Karino *et al.*, 1987). However, this would mean that the manner of secondary thickening of vessels and especially its remnants are different between root and stem xylem, as no difference was found in the conductivity for the stem xylem.

b) Asymmetric pit aperture

Pits and the connectivity between vessel elements are supposed to play an important role in safety and resistance for the hydraulic system of plants (Choat *et al.*, 2008). If the pits opening would be smaller on one side, the conductivity could be reduced (figure 4 B). If the smaller opening would be consistently at the vessel side closer to the root tip, this could result in a reduction in the reverse conductivity (Steven Jansen, personal communication, figure 4 b). But as no reduction in the reverse conductivity was found in the stem segments, this would indicate, that pits of the stems are built differently from the pits in roots. Up to this point however, most studies about pits were made in aboveground organs (Choat *et al.*, 2008 and citations within). However, it appears unlikely that the pits themselves are responsible for the reduction of reverse conductivity. First, pits in angiosperms are well studied (e.g. Choat *et al.*, 2008) and so far there are no indications that they would favor one direction, as they have to “seal” either vessel in case of cavitation. Second, as the vessel grouping index (V_G) in the four angiosperm roots was diverse, with only maple showing a

considerable amount of vessel grouping, it appears unlikely that reverse conductivity reduction is related to pits anatomy. Plants with a high vessel grouping index would be considered to have more connecting pits between the vessels than plants with a low vessel grouping index. Nevertheless, we saw no differences in the amount of conductivity reduction between maple with high and the other three angiosperms with lower V_G .

c) Vessel tapering

Another reason for the reduced conductivity along a conduit could be tapering towards one end (Petit et al. 2008). Vessel tapering is known to occur in stems and branches (Anfodillo *et al.*, 2006; Petit *et al.*, 2010) and is assumed to happen in roots (Enquist, 2003). As given by the law of Hagen-Poiseuille, the conductivity is dependent on the fourth power of the vessel radius (Sperry *et al.*, 2006). Tapering of vessels towards the root tip would limit reverse flow compared to forward flow (Walander and Prasassarakich, 1976; Rubenstein *et al.*, 2011). However, the reduction of reverse conductivity was only found in angiosperms, but tapering is known to happen in conifers too. Nevertheless, the degree of tapering may be related to the size of conduits and xylem dimension and may therefore be neglectable in tracheids and large diameter stems but not for vessels and small roots/twigs respectively.

d) Perforation/end plates

Perforation plates, i.e. the remnants of cell walls between connected vessels (Christman and Sperry, 2010), increase the resistance for water flow. While there are different forms, scalariform perforation plates are common in angiosperms (Ellerby and Ennos, 1998). If the openings in these plates would taper to one side (e.g. conical shaped), the resistance for one direction would increase (figure 4 d, Walander and Prasassarakich, 1976; Rubenstein *et al.*, 2011). Again, this would imply a different structure and/or building process of root xylem compared to stem xylem, as no reduction of conductivity was found in stems.

As conifers showed no difference between the conductivity directions, H2 was accepted for them. For angiosperms, H2 was rejected, as a reduction of 40 % was found in the reverse conductivity compared to the forward conductivity. The four points mentioned above are based on the physical principles of resistance and turbulent flow, although flow rates under HR are relatively low compared to maximum forward flow and therefore the impact of turbulences might not be very big. None of them has been examined so far and will hopefully stimulate future work. However, reverse root conductivity seems to limit internal HR in angiosperm trees stronger than assumed (Neumann and Cardon, 2012). Transfer of water into the soil might be additionally limited as the conductance of the whole root system is additionally limited by other mechanisms such as forcing of water through the symplasm by the casparian stripe during water uptake or root suberization. The reduction in reverse conductivity in roots can also be interpreted from an evolutionary point of view. As HR is a passive phenomenon, trees reducing the loss of water into the soil to some extent may benefit during drought events and therefore may be favored during selection processes. As conifers only have tracheids, which conduct smaller amounts of water compared to vessels, the losses might be bearable anyway.

Conclusions

Wood structure of conifer was very similar between primary and secondary roots but showed distinct differences to angiosperms. While primary roots were similar among angiosperms, secondary roots show clear anatomical differences between species. Fine root anatomy of angiosperms cannot be predicted by stem anatomy, as angiosperm fine roots tended to build more but smaller and generally diffuse-porous conduits.

The reduction in reverse conductivity in angiosperm roots sheds new light on the potential of HR in general. Especially under drought scenarios, when embolism already reduces conductivity, the amount of redistributed water might be lower than expected and the reduced root conductivity in the reverse direction in angiosperm roots should be considered. Whether this reduction is due to the anatomical structure of vessels should be tested e.g. by assessing reverse conductivity in vesselless angiosperms (Hacke *et al.*, 2007). In general, more detailed information about vessel anatomy (e.g. structure of cell walls and perforation plates) will help to understand the process of water transport and its limitations in plant roots.

Acknowledgements

We thank Roman Meier, Peter Kuba and Thomas Feuerbach for the maintenance of the climate chambers and help during the setup of the experiment. We thank Dr. Marc Göbel (Cornell University) and Benjamin Hall and Dr. Asheesh

Lamba of Lasers for Innovative Solutions (L4iS) for conducting laser ablation tomography. In addition, we want to thank Dr. Steven Jansen and Dr. Taryn Bauerle for stimulating discussions about the results of this study.

References

- Alvarez-Uria P., Körner C., 2007. Low temperature limits of root growth in deciduous and evergreen temperate tree species. *Funct Ecol* 21:211-218. <https://doi.org/10.1111/j.1365-2435.2007.01231.x>
- Anfodillo T., Carraro V., Carrer M., Fior C., Rossi S., 2006. Convergent tapering of xylem conduits in different woody species. *New Phytol* 169:279-290. <https://doi.org/10.1111/j.1469-8137.2005.01587.x>
- Asner G.P., Brodrick P.G., Anderson C.B., Vaughn N., Knapp D.E., Martin R.E., 2016. Progressive forest canopy water loss during the 2012-2015 California drought. *Proc Natl Acad Sci* 113: E249-E255. <https://doi.org/10.1073/pnas.1523397113>
- Bailey I.W., 1944. The Development of Vessels in Angiosperms and its Significance in Morphological Research. *Am J Bot* 31:421-428. <https://doi.org/10.1002/j.1537-2197.1944.tb08053.x>
- Barbaroux C., Bréda N., 2002. Contrasting distribution and seasonal dynamics of carbohydrate reserves in stem wood of adult ring-porous sessile oak and diffuse-porous beech trees.pdf. *Tree Physiol* 22:1201-1210. <https://doi.org/10.1093/treephys/22.17.1201>
- Barigah T.S., Charrier O., Douris M., Bonhomme M., Herbette S., Améglio T., Fichot R., Brignolas F., Cochard H., 2013. Water stress-induced xylem hydraulic failure is a causal factor of tree mortality in beech and poplar. *Ann Bot* 112:1431-1437. <https://doi.org/10.1093/aob/mct204>
- Brodribb T.J., Cochard H., 2009. Hydraulic Failure Defines the Recovery and Point of Death in Water-Stressed Conifers. *Plant Physiol* 149:575-584. <https://doi.org/10.1104/pp.108.129783>
- Burke EJ, Brown SJ, Christidis N (2006) Modeling the Recent Evolution of Global Drought and Projections for the Twenty-First Century with the Hadley Centre Climate Model. *J Hydrometeorol* 7:1113-1125. <https://doi.org/10.1175/JHM544.1>
- Carlquist S (2001) Comparative Wood Anatomy - Systematic, Ecological, and Evolutionary Aspects of Dicotyledon wood, 2nd edn. Springer Verlag, Berlin. <https://doi.org/10.1007/978-3-662-04578-7>
- Chimungu JG, Brown KM, Lynch JP (2014) Large Root Cortical Cell Size Improves Drought Tolerance in Maize. *Plant Physiol* 166:2166-2178. <https://doi.org/10.1104/pp.114.250449>
- Choat B, Cobb AR, Jansen S (2008) Structure and function of bordered pits: New discoveries and impacts on whole-plant hydraulic function. *New Phytol* 177:608-626. <https://doi.org/10.1111/j.1469-8137.2007.02317.x>
- Christman MA, Sperry JS (2010) Single-vessel flow measurements indicate scalariform perforation plates confer higher flow resistance than previously estimated. *Plant, Cell Environ* 33:431-443. <https://doi.org/10.1111/j.1365-3040.2009.02094.x>
- Ciais P, Reichstein M, Viovy N, Granier A, Ogée J, Allard V, Aubinet M, Buchmann N, Bernhofer C, Carrara A, Chevallier F, De Noblet N, Friend AD, Friedlingstein P, Grünwald T, Heinesch B, Keronen P, Knohl A, Krinner G, Loustau D, Manca G, Matteucci G, Miglietta F, Ourcival JM, Papale D, Pilegaard K, Rambal S, Seufert G, Soussana JF, Sanz MJ, Schulze ED, Vesala T, Valentini R (2005) Europe-wide reduction in primary productivity caused by the heat and drought in 2003. *Nature* 437:529-533. <https://doi.org/10.1038/nature03972>
- Cochard H, Badel E, Herbette S, Delzon S, Choat B, Jansen S (2013) Methods for measuring plant vulnerability to cavitation: A critical review. *J Exp Bot* 64:4779-4791. <https://doi.org/10.1093/jxb/ert193>
- Delzon S, Cochard H (2014) Recent advances in tree hydraulics highlight the ecological significance of the hydraulic safety margin. *New Phytol* 203:355-358. <https://doi.org/10.1111/nph.12798>
- Ellerby DJ, Ennos AR (1998) Resistances to fluid flow of model xylem vessels with simple and scalariform perforation plates. *J Exp Bot* 49:979-985. <https://doi.org/10.1093/jxb/49.323.979>
- Emerman SH, Dawson TE (2010) Hydraulic Lift and Its Influence on the Water Content of the Rhizosphere. *Oecologia* 108:273-278. <https://doi.org/10.1007/BF00334651>
- Enquist BJ (2003) Cope's rule and the evolution of long-distance transport in vascular plants: Allometric scaling, biomass partitioning and optimization. *Plant, Cell Environ* 26:151-161. <https://doi.org/10.1046/j.1365-3040.2003.00987.x>

- Fonti P, García-González I (2004) Suitability of chestnut earlywood vessel chronologies for ecological studies. *New Phytol* 163:77-86. <https://doi.org/10.1111/j.1469-8137.2004.01089.x>
- Hacke UG, Sperry JS, Feild TS, Sano Y, Sikkema EH, Pittermann J (2007) Water Transport in Vesselless Angiosperms: Conducting Efficiency and Cavitation Safety. *Int J Plant Sci* 168:1113-1126. <https://doi.org/10.1086/520724>
- Hänsel S, Ustrnul Z, Łupikasza E, Skalak P (2019) Assessing seasonal drought variations and trends over Central Europe. *Adv Water Resour* 127:53-75. <https://doi.org/10.1016/j.advwatres.2019.03.005>
- Hafner BD, Tomasella M, Häberle K, Goebel M, Matyssek R, Grams TEE (2017) Hydraulic redistribution under moderate drought among English oak, European beech and Norway spruce determined by deuterium isotope labeling in a split-root experiment. *Tree Physiol*:1-11. <https://doi.org/10.1093/treephys/tpx050>
- Hartmann H, Schuldt B, Sanders TGM, Macinnis-Ng C, Boehmer HJ, Allen CD, Bolte A, Crowther TW, Hansen MC, Medlyn BE, Ruehr NK, Anderegg WRL (2018) Monitoring global tree mortality patterns and trends. Report from the VW symposium 'Crossing scales and disciplines to identify global trends of tree mortality as indicators of forest health'. *New Phytol* 217:984-987. <https://doi.org/10.1111/nph.14988>
- Ionita, M., Tallaksen, L. M., Kingston, D. G., Stagge, J. H., Laaha, G., Van Lanen, H. A. J., Scholz, P., Chelcea, S. M. and Haslinger, K. (2017) The European 2015 drought from a climatological perspective, *Hydrol. Earth Syst. Sci.*, 21, 1397-1419. <https://doi.org/10.5194/hess-21-1397-2017>
- IPCC, 2007: *Climate Change 2007: Impacts, Adaptation and Vulnerability. Contribution of Working Group II to the Fourth Assessment Report of the Intergovernmental Panel on Climate Change*, M.L. Parry, O.F. Canziani, J.P. Palutikof, P.J. van der Linden and C.E. Hanson, Eds., Cambridge University Press, Cambridge, UK, 976pp.
- IPCC, 2014: *Climate Change 2014: Synthesis Report. Contribution of Working Groups I, II and III to the Fifth Assessment Report of the Intergovernmental Panel on Climate Change [Core Writing Team, R.K. Pachauri and L.A. Meyer (eds.)]*. IPCC, Geneva, Switzerland, 151 pp.
- Jackson RB, Sperry JS, Dawson TE (2000) Root water uptake and transport: Using physiological processes in global predictions. *Trends Plant Sci* 5:482-488. [https://doi.org/10.1016/S1360-1385\(00\)01766-0](https://doi.org/10.1016/S1360-1385(00)01766-0)
- Jacobsen AL, Ewers FW, Pratt RB, Paddock III WA, Davis SD (2005) Do Xylem Fibers Affect Vessel Cavitation Resistance? *Plant Physiol* 139:546-556. <https://doi.org/10.1104/pp.104.058404>
- James KR, Haritos N, Ades PK (2006) Mechanical stability of trees under dynamic loads. *Am J Bot* 93:1522-1530. <https://doi.org/10.3732/ajb.93.10.1522>
- Jansen S, Smets E, Baas P (1998) Vestures in woody plants: A review. *IAWA J* 19:347-382. <https://doi.org/10.1163/22941932-90000658>
- Karino T, Goldsmith HL, Motomiya M, Mabuchi S, Sohara Y (1987) Flow Patterns in Vessels of Simple and Complex Geometries. *Ann N Y Acad Sci* 516:422-441. <https://doi.org/10.1111/j.1749-6632.1987.tb33063.x>
- Lens F, Sperry JS, Christman MA, Choat B, Rabaey D, Jansen S (2011) Testing hypotheses that link wood anatomy to cavitation resistance and hydraulic conductivity in the genus *Acer*. *New Phytol* 190:709-723. <https://doi.org/10.1111/j.1469-8137.2010.03518.x>
- Leuzinger S, Zotz G, Asshoff R, Korner C (2005) Responses of deciduous forest trees to severe drought in Central Europe. *Tree Physiol* 25:641-650. <https://doi.org/10.1093/treephys/25.6.641>
- Lobo A, Hansen JK, Kjær ED, Torres-Ruiz JM, Burlett R, Lemaire C, Parise C, Francioni C, Truffaut L, Kremer A, Tomášková I, Delzon S (2018) Assessing inter- and intraspecific variability of xylem vulnerability to embolism in oaks. *For Ecol Manage* 424:53-61. <https://doi.org/10.1016/j.foreco.2018.04.031>
- Lüttge U, Kluge M, Bauer G (2005) *Botanik*, 5th edn. WILEY-VCH Verlag, Weinheim.
- McCulloh KA, Sperry JS (2005) Patterns in hydraulic architecture and their implications for transport efficiency. *Tree Physiol* 25:257-67. <https://doi.org/10.1093/treephys/25.3.257>
- McCulloh K, Sperry JS, Lachenbruch B, Meinzer FC, Reich PB, Voelker S (2010) Moving water well: Comparing hydraulic efficiency in twigs and trunks of coniferous, ring-porous, and diffuse-porous saplings from temperate and tropical forests. *New Phytol* 186:439-450. <https://doi.org/10.1111/j.1469-8137.2010.03181.x>
- McDougall WB (1916) The Growth of Forest Tree Roots. *Am J Bot* 3:384-392. <https://doi.org/10.1002/j.1537-2197.1916.tb05420.x>

- Neumann RB, Gardon ZG (2012) The magnitude of hydraulic redistribution by plant roots: a review and synthesis of empirical and modeling studies. *New Phytol* 194:337-352. <https://doi.org/10.1111/j.1469-8137.2012.04088.x>
- Ohtani J, Meylan BA, Butterfield BG (1983) Occurrence of warts in the vessel elements and fibres of new zealand woods. *New Zeal J Bot* 21:359-372. <https://doi.org/10.1080/0028825X.1983.10428568>
- Petit G, Anfodillo T, Mencuccini M (2008) Tapering of xylem conduits and hydraulic limitations in sycamore (*Acer pseudoplatanus*) trees. *New Phytol* 177:653-664. <https://doi.org/10.1111/j.1469-8137.2007.02291.x>
- Petit G, Pfautsch S, Anfodillo T, Adams MA (2010) The challenge of tree height in *Eucalyptus regnans*: When xylem tapering overcomes hydraulic resistance. *New Phytol* 187:1146-1153. <https://doi.org/10.1111/j.1469-8137.2010.03304.x>
- Preston KA, Cornwell WK, DeNoyer JL (2006) Wood density and vessel traits as distinct correlates of ecological strategy in 51 California coast range angiosperms. *New Phytol* 170:807-818. <https://doi.org/10.1111/j.1469-8137.2006.01712.x>
- Prieto I, Armas C, Pugnaire FI (2012) Water release through plant roots: New insights into its consequences at the plant and ecosystem level. *New Phytol* 193:830-841. <https://doi.org/10.1111/j.1469-8137.2011.04039.x>
- R Development Core Team (2008) R: A language and environment for statistical computing. <http://wwwR-project.org>
- RStudio Team (2015) RStudio: Integrated Development for R. <http://www.rstudio.com/>
- Rubenstein DA, Yin W, Frame MD (2011) *Biofluid Mechanics: An Introduction to Fluid Mechanics, Macrocirculation, and Microcirculation*, 1st edn. Academic Press, Oxford.
- Ryel R.J. (2004) Hydraulic Redistribution. In: Esser K., Lüttge U., Beyschlag W., Murata J. (eds) *Progress in Botany*. Progress in Botany, vol 65. Springer, Berlin, Heidelberg. https://doi.org/10.1007/978-3-642-18819-0_17
- Scholz A, Klepsch M, Karimi Z, Jansen S (2013) How to quantify conduits in wood? *Front Plant Sci* 4:1-11. <https://doi.org/10.3389/fpls.2013.00056>
- Schreiber SG, Hacke UG, Hamann A (2015) Variation of xylem vessel diameters across a climate gradient: Insight from a reciprocal transplant experiment with a widespread boreal tree. *Funct Ecol* 29:1392-1401. <https://doi.org/10.1111/1365-2435.12455>
- Sperry JS (2003) Evolution of Water Transport and Xylem Structure. *Int J Plant Sci* 164: S115-S127. <https://doi.org/10.1086/368398>
- Sperry JS, Hacke UG, Pittermann J (2006) Size and function in conifer tracheids and angiosperm vessels. *Am J Bot* 93:1490-1500. <https://doi.org/10.3732/ajb.93.10.1490>
- Steppe K, Lemeur R (2007) Effects of ring-porous and diffuse-porous stem wood anatomy on the hydraulic parameters used in a water flow and storage model. *Tree Physiol* 27:43-52. <https://doi.org/10.1093/treephys/27.1.43>
- Tomasella M, Beikircher B, Häberle K-H, Hesse B, Kallenbach C, Matyssek R, Mayr S (2017a) Acclimation of branch and leaf hydraulics in adult *Fagus sylvatica* and *Picea abies* in a forest through-fall exclusion experiment. *Tree Physiol*:1-14. <https://doi.org/10.1093/treephys/tpx140>
- Tomasella M, Häberle K-H, Nardini A, Hesse B, Machlet A, Matyssek R (2017b) Post-drought hydraulic recovery is accompanied by non-structural carbohydrate depletion in the stem wood of Norway spruce saplings. *Sci Rep* 7:14308. <https://doi.org/10.1038/s41598-017-14645-w>
- Tyree, M. T. & Zimmermann, M. H. (2002). *Xylem Structure and the Ascent of Sap*. 2nd Edn. Berlin, Heidelberg, New York: Springer- Verlag <https://doi.org/10.1007/978-3-662-04931-0>
- Tryon PR, Chapin III FS (1983) Temperature control over root growth and root biomass in taiga forest trees. *Can J For Res* 13:827-833. <https://doi.org/10.1139/x83-112>
- Urli M, Porté AJ, Cochard H, Guengant Y, Burrett R, Delzon S (2013) Xylem embolism threshold for catastrophic hydraulic failure in angiosperm trees. *Tree Physiol* 33:672-683. <https://doi.org/10.1093/treephys/tpt030>
- Walawender W, Prasassarakich P (1976) Flow in Tapering and Cylindrical Vessels. *Microvasc Res* 12:1-12. [https://doi.org/10.1016/0026-2862\(76\)90002-9](https://doi.org/10.1016/0026-2862(76)90002-9)
- Watkinson JJ, Sioson AA, Vasquez-Robinet C, Shukla M, Kumar D, Ellis M, Heath LS, Ramakrishnan N, Chevone B, Watson L. T, van Zyl L, Egertsdotter U, Sederoff RR, Grene R (2003) Photosynthetic Acclimation Is Reflected in Specific Patterns of Gene Expression in Drought-Stressed Loblolly Pine. *Plant Physiol* 133:1702-1716. <https://doi.org/10.1104/pp.103.026914>

- Woodruff DR, Meinzer FC, Lachenbruch B (2008) Height-related trends in leaf xylem anatomy and shoot hydraulic characteristics in a tall conifer: Safety versus efficiency in water transport. *New Phytol* 180:90-99. <https://doi.org/10.1111/j.1469-8137.2008.02551.x>
- Zanne AE, Westoby M, Falster DS, Ackerly DD, Loarie SR, Arnold SEJ, Coomes DA (2010) Angiosperm wood structure: Global patterns in vessel anatomy and their relation to wood density and potential conductivity. *Am J Bot* 97:207-215. <https://doi.org/10.3732/ajb.0900178>