

Supplementary material

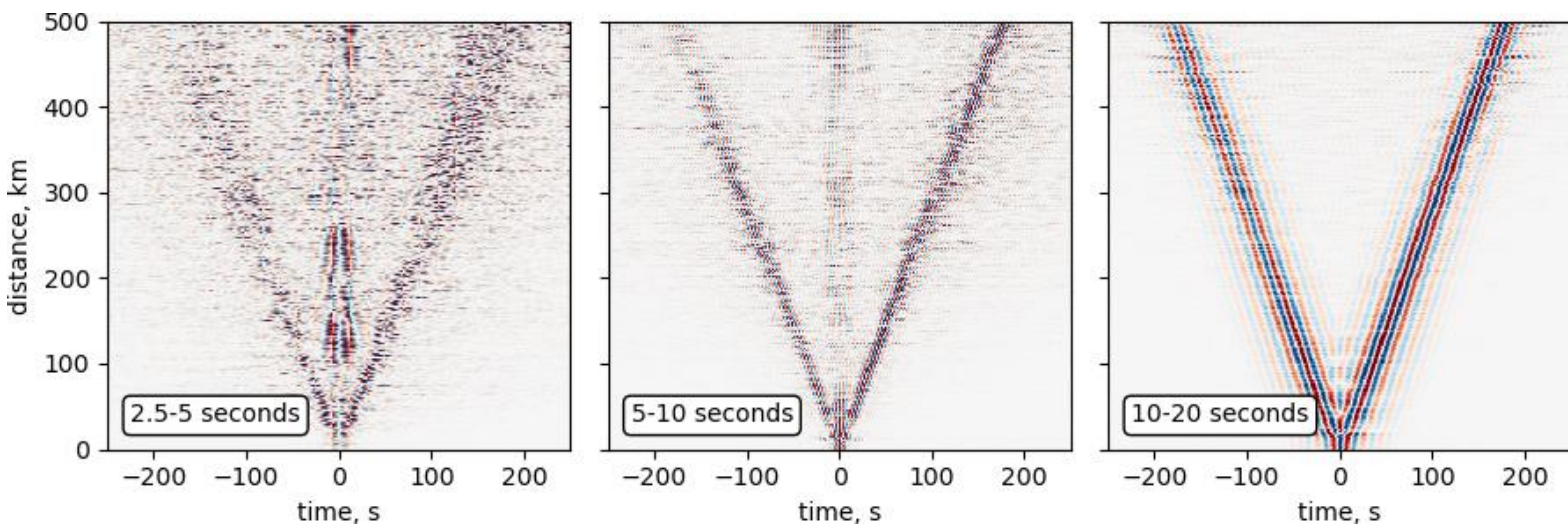


Figure S1: Seismic section of correlations in the 2.5 s – 5 s (left), 5 s – 10 s (center) and 10 s – 20 s (right) period bands, for the selected dataset (see Section 2.3). The traces are stacked in bins of 1 km and normalized by their maximum. All correlations have been oriented so that the causal part points away from 300° of azimuth; i.e. the direction which approximately corresponds to the dominant direction of the noise sources.

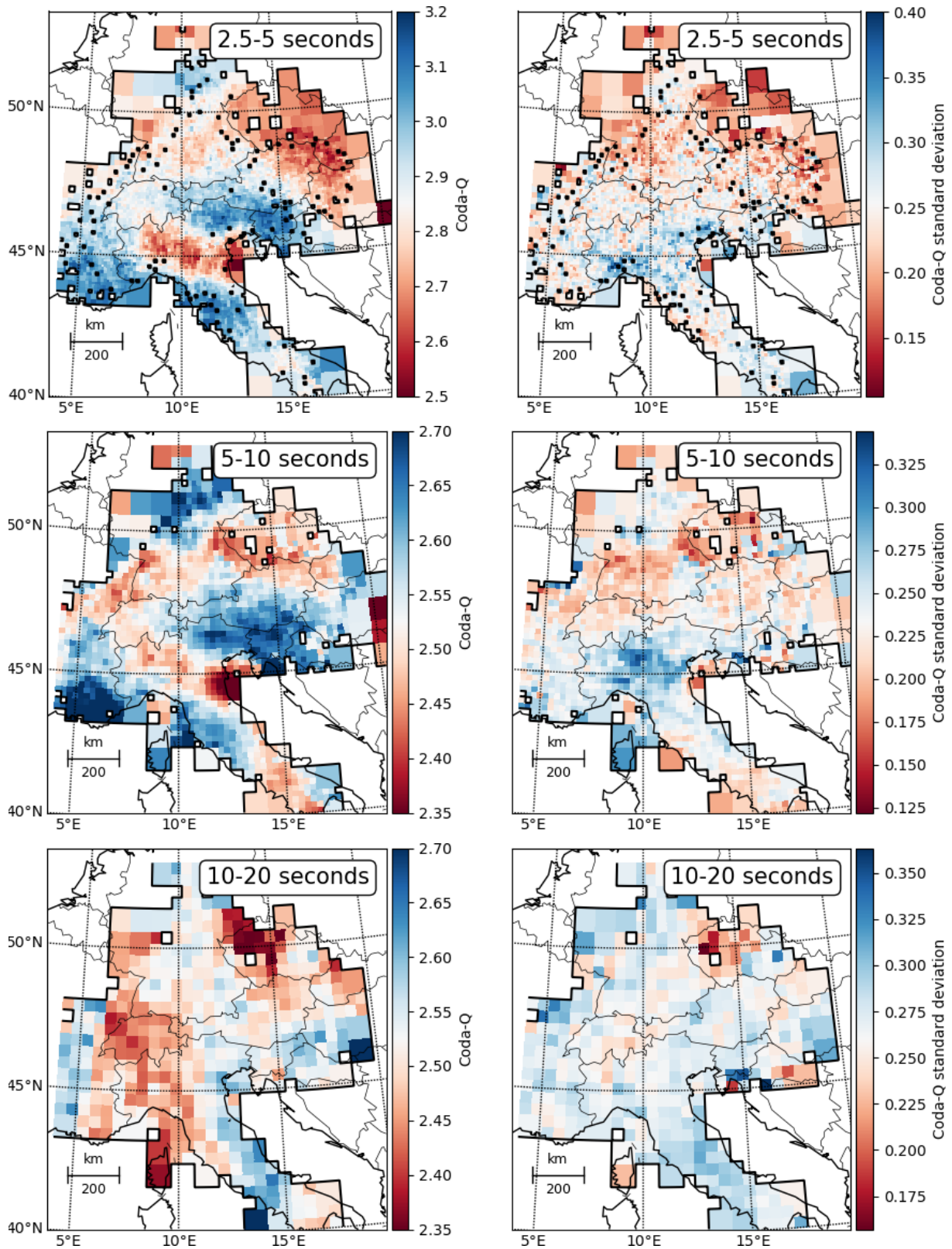


Figure S2: Map of \log_{10} of coda-Q (left) and its standard deviation in each cell (right). As the distribution of $\log(\text{coda-Q})$ is not Gaussian in the cells, the standard deviation only has indicative value.

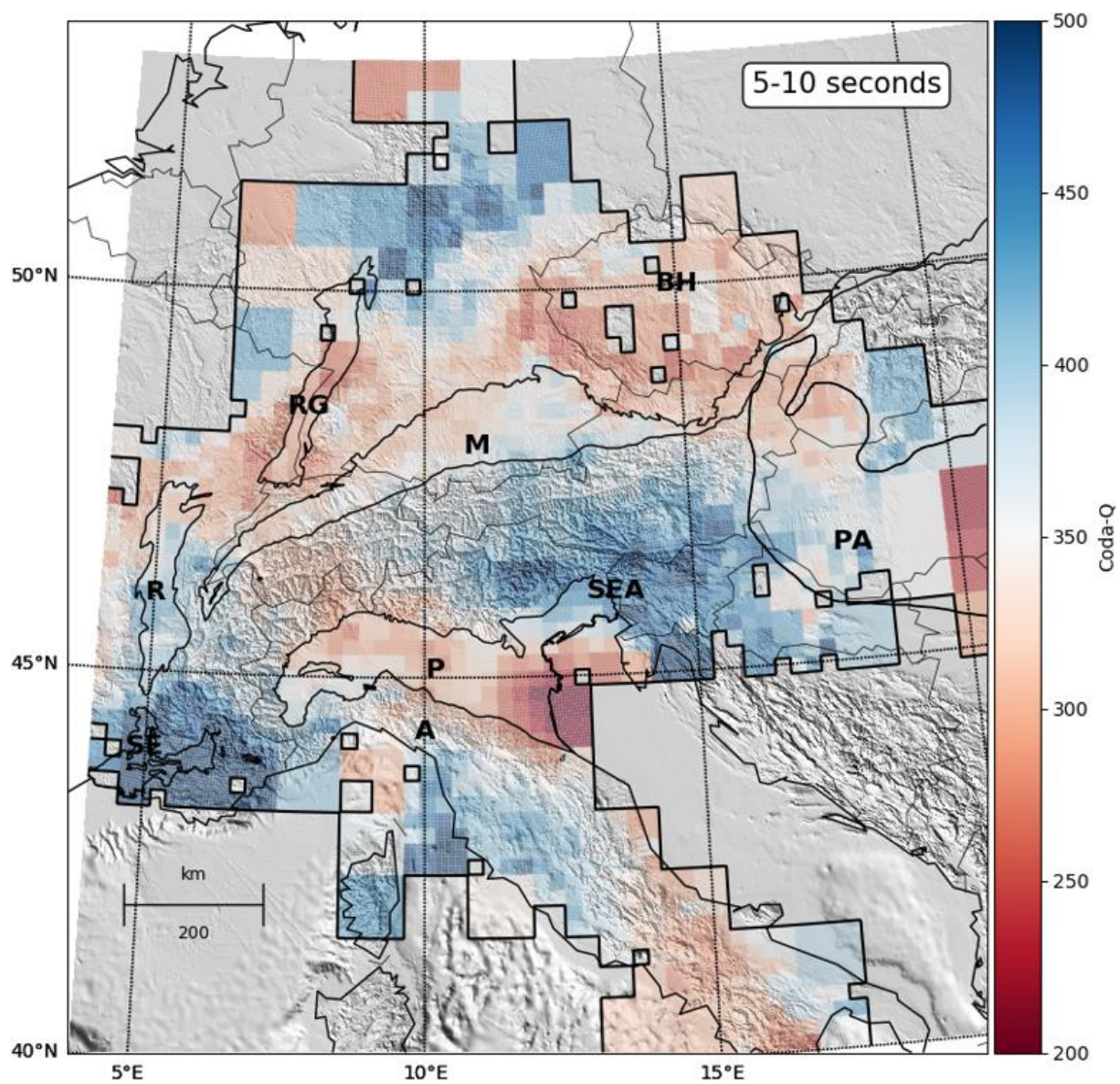


Figure S3: Map of coda-Q superposed to topography and main sedimentary basins.