



**HAL**  
open science

## Natural Chlordecone Degradation Revealed by Numerous Transformation Products Characterized in Key French West Indies Environmental Compartments

Marion L. Chevallier, Oriane Della-Negra, Sébastien Chaussonnerie, Agnès Barbance, Delphine Muselet, Florian Lagarde, Ekaterina Darii, Edgardo Ugarte, Ewen Lescop, Nuria Fonknechten, et al.

### ► To cite this version:

Marion L. Chevallier, Oriane Della-Negra, Sébastien Chaussonnerie, Agnès Barbance, Delphine Muselet, et al.. Natural Chlordecone Degradation Revealed by Numerous Transformation Products Characterized in Key French West Indies Environmental Compartments. *Environmental Science and Technology*, 2019, 53 (11), pp.6133-6143. 10.1021/acs.est.8b06305 . hal-02309073

**HAL Id: hal-02309073**

**<https://hal.science/hal-02309073>**

Submitted on 3 Apr 2020

**HAL** is a multi-disciplinary open access archive for the deposit and dissemination of scientific research documents, whether they are published or not. The documents may come from teaching and research institutions in France or abroad, or from public or private research centers.

L'archive ouverte pluridisciplinaire **HAL**, est destinée au dépôt et à la diffusion de documents scientifiques de niveau recherche, publiés ou non, émanant des établissements d'enseignement et de recherche français ou étrangers, des laboratoires publics ou privés.

This document is confidential and is proprietary to the American Chemical Society and its authors. Do not copy or disclose without written permission. If you have received this item in error, notify the sender and delete all copies.

**Natural chlordecone degradation revealed by numerous transformation products characterized in key French West Indies environmental compartments**

Journal:	<i>Environmental Science &amp; Technology</i>
Manuscript ID	es-2018-06305s
Manuscript Type:	Article
Date Submitted by the Author:	09-Nov-2018
Complete List of Authors:	<p>Chevallier, Marion; Génomique Métabolique, Genoscope, Institut François Jacob, CEA, CNRS, Université d'Évry, Université Paris-Saclay  Della-Negra, Oriane; Génomique Métabolique, Genoscope, Institut François Jacob, CEA, CNRS, Université d'Évry, Université Paris-Saclay  Chaussonnerie, Sébastien; Génomique Métabolique, Genoscope, Institut François Jacob, CEA, CNRS, Université d'Évry, Université Paris-Saclay  Barbance, Agnès; Génomique Métabolique, Genoscope, Institut François Jacob, CEA, CNRS, Université d'Évry, Université Paris-Saclay  Muselet, Delphine; Génomique Métabolique, Genoscope, Institut François Jacob, CEA, CNRS, Université d'Évry, Université Paris-Saclay  Lagarde, Florian; Génomique Métabolique, Genoscope, Institut François Jacob, CEA, CNRS, Université d'Évry, Université Paris-Saclay  Darij, Ekaterina; Génomique Métabolique, Genoscope, Institut François Jacob, CEA, CNRS, Université d'Évry, Université Paris-Saclay  Ugarte, Edgardo; Génomique Métabolique, Genoscope, Institut François Jacob, CEA, CNRS, Université d'Évry, Université Paris-Saclay  Lescop, Ewen; Institut de Chimie des Substances Naturelles, CNRS UPR 2301, Université Paris-Sud  Fonknechten, Nuria; Génomique Métabolique, Genoscope, Institut François Jacob, CEA, CNRS, Université d'Évry, Université Paris-Saclay  Weissenbach, Jean; Génomique Métabolique, Genoscope, Institut François Jacob, CEA, CNRS, Université d'Évry, Université Paris-Saclay  Woignier, Thierry; Institut Méditerranéen de Biodiversité et d'Ecologie marine et continentale (IMBE), Aix Marseille Université, CNRS, IRD, Avignon Université and IRD, UMR IMBE, Campus Agro Environnemental Caraïbes  Gallard, Jean-François; Institut de Chimie des Substances Naturelles, CNRS UPR 2301, Université Paris-Sud  Vuilleumier, Stéphane; Génétique Moléculaire, Génomique, Microbiologie (GMGM), Université de Strasbourg, UMR 7156 CNRS  Imfeld, Gwenaël; Laboratory of Hydrology and Geochemistry of Strasbourg (LHyGeS), Université de Strasbourg, UMR 7517 CNRS/EOST  Le Paslier, Denis; Génomique Métabolique, Genoscope, Institut François Jacob, CEA, CNRS, Université d'Évry, Université Paris-Saclay  Saaïdi, Pierre-Loïc; Génomique Métabolique, Genoscope, Institut François Jacob, CEA, CNRS, Université d'Évry, Université Paris-Saclay</p>

SCHOLARONE™  
Manuscripts

1 Natural chlordecone degradation revealed by  
2 numerous transformation products characterized in  
3 key French West Indies environmental  
4 compartments

5 *Marion L. Chevallier<sup>a,1</sup>, Oriane Della-Negra<sup>a,1</sup>, Sébastien Chaussonnerie<sup>a,2</sup>, Agnès Barbance<sup>a,2</sup>,*  
6 *Delphine Muselet<sup>a,2</sup>, Florian Lagarde<sup>a</sup>, Ekaterina Darii<sup>a</sup>, Edgardo Ugarte<sup>a</sup>, Ewen Lescop<sup>b</sup>,*  
7 *Nuria Fonknechten<sup>a</sup>, Jean Weissenbach<sup>a</sup>, Thierry Woignier<sup>c</sup>, Jean-François Gallard<sup>b</sup>, Stéphane*  
8 *Vuilleumier<sup>d</sup>, Gwenaël Imfeld<sup>e</sup>, Denis Le Paslier<sup>a,3</sup>, Pierre-Loïc Saaidi<sup>a,3</sup>.*

9

10 <sup>a</sup>Génomique Métabolique, Genoscope, Institut François Jacob, CEA, CNRS, Université d'Évry,  
11 Université Paris-Saclay, Evry, France.

12 <sup>b</sup>Institut de Chimie des Substances Naturelles. CNRS - UPR 2301 Bâtiment 27, 1 avenue de la  
13 Terrasse 91198 Gif-sur-Yvette Cedex, France.

14 <sup>c</sup>Institut Méditerranéen de Biodiversité et d'Ecologie marine et continentale (IMBE), Aix  
15 Marseille Université, CNRS, IRD, Avignon Université and IRD, UMR IMBE, Campus Agro  
16 Environnemental Caraïbes B. P. 214 Petit Morne, 97235, Le Lamentin, Martinique, France.

17 <sup>d</sup>Génétique Moléculaire, Génomique, Microbiologie (GMGM), Université de Strasbourg, UMR  
18 7156 CNRS, 28 rue Goethe, 67000 Strasbourg Cedex, France.

19 <sup>e</sup>Laboratory of Hydrology and Geochemistry of Strasbourg (LHyGeS), Université de Strasbourg,  
20 UMR 7517 CNRS/EOST, 1 Rue Blessig, 67084 Strasbourg Cedex, France.

21 <sup>1</sup>M.C. and O.D.N. contributed equally

22 <sup>2</sup>S.C., A.B. and D.M. also contributed equally

23 <sup>3</sup>To whom correspondence may be addressed: Pierre-Loïc Saaidi, or Denis Le Paslier, E-Mail:  
24 [plsaaidi@genoscope.cns.fr](mailto:plsaaidi@genoscope.cns.fr) or [denis@genoscope.cns.fr](mailto:denis@genoscope.cns.fr).

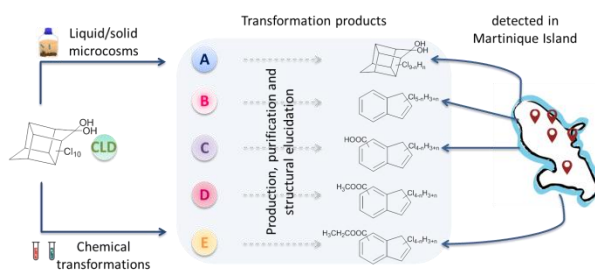
25

26

## 27 ABSTRACT

28 A large part of the well-established Persistent Organic Pollutants is composed of organochlorine  
29 pesticides that are still poisoning our environment. Among them, the insecticide chlordecone  
30 shares with mirex a particularly recalcitrant perchlorinated bishomocubane structure. Its  
31 production and application has caused long-term environmental pollutions in the James River  
32 area (US) and in the French West Indies (FWI) that resulted in acute human health issues and  
33 social crisis. Chlordecone is considered virtually non-biodegradable in the environment mainly  
34 due to absence of transformation products (TP) and high levels of chlordecone concentration  
35 even after decades of prohibition. Here, 19 TP were identified by untargeted GC-MS and LC-  
36 HRMS analyses of a series of anoxic degradation experiments, and classified into five distinct  
37 families. Chemical synthesis and NMR spectroscopy allowed structural elucidation of 19 so far  
38 unidentified TP. Among the 19 TP detected in key FWI compartments (soils, river, mangrove  
39 and sediments), 2,4,5,6,7-pentachloroindene showed similar concentration levels as chlordecone.  
40 Microcosm experiments on three FWI soils confirmed intrinsic potential for chlordecone natural  
41 degradation. These results not only challenge the paradigm of chlordecone persistence over  
42 periods of centuries, but also raise the overlooked issue of extensive pollution of soil and aquatic  
43 ecosystems by chlordecone TP worldwide.

44



47 KEYWORDS. Chlordecone | persistent organic pollutant | pollution | biodegradation |  
48 structure elucidation | transformation product

49

50

## 51 INTRODUCTION

52 The organochlorine (OC) insecticides have been applied extensively for pest control in  
53 agriculture worldwide for decades. Their use has gradually been prohibited since the 1970s  
54 because of their biological biomagnification, high toxicity and long persistence in the  
55 environment. Many OC synthesized from hexachlorocyclopentadiene[1] belong to the  
56 Stockholm convention list of Persistent Organic Pollutants (POPs), ie aldrin, dieldrin, endrin,  
57 chlordan, heptachlor, mirex, chlordane and endosulfans. Among them, the insecticides  
58 chlordane and mirex, that has been commonly used as fire-retardant, represent a particular  
59 class of OC as they both arise from hexachlorocyclopentadiene dimerization[1, 2] and share a  
60 number of characteristics such as low value of molecular orbital energy, high hydrophobicity and  
61 low  $K_{ow}$ [3]. Chlordane is also known as a TP of mirex[4] and kelevan, another insecticide  
62 mainly used in Europe[5]. The resulting highly stable perchlorinated bishomocubane structure  
63 renders such OC extremely recalcitrant to environmental conditions. While chlordane  
64 formulations produced in the US (as Kepone) and Brazil (as Curlone) have been mainly used in  
65 the Caribbean area, in Central America and Africa[6], mirex utilization has been reported in  
66 North America[7, 8], Latin America, Europe[6] and more recently in China[9]. Finally, by its  
67 direct use or its in situ formation, chlordane is virtually present all over the world and has been  
68 even detected in the coral reefs of the French Polynesia[10], we thus chose it as a pertinent and  
69 challenging pollutant from the hexachlorocyclopentadiene-based OC.

70 To date, chlordane has already led to two environmental disasters: (1) contamination of the  
71 environment nearby the Hopewell chlordane production plant (U.S.) in 1975 causing massive  
72 pollution of the James River over 100 miles for decades and acute exposition of workers[11]. On  
73 a wider scale, extensive use of chlordane from 1972 to 1993 in banana plantations of the



74 French West Indies (FWI) has resulted in a long-term pollution of environmental compartments  
75 and the local food chain (soils, water resources, farmed animals, fish)[6, 12, 13]. Chronic  
76 exposure to chlordecone has resulted in human health problems [13-26] and subsequent socio-  
77 economic issues for the FWI and the James River area [27-30].

78 Following application, chlordecone sorbs onto soil and sediments particles, especially organic  
79 rich FWI matrices. The commonly admitted paradigm of absolute chlordecone persistence for  
80 decades/centuries in the FWI based on a leaching model[31]has been recently confirmed by two  
81 studies suggesting only marginal degradation in tropical soils, if any [32, 33]. Generally, POPs  
82 pollution is assessed and followed by environmental monitoring of the parent molecule, with  
83 restricted efforts dedicated to the possible TP in situ formed and their consequences as  
84 exemplified for aldrin. In the case of chlordecone, several bacterial degradation experiments  
85 suggested two main TP families evidenced by GC-MS [34, 35] [36, 37]. Despite extensive  
86 analytical studies on chlordecone contamination in the FWI[6], the only chlordecone derivatives  
87 hitherto detected in environmental samples, i.e. chlordecol and 8-monohydrochlordecone, turn to  
88 be contaminants from former commercial formulations. However, as only targeted analyses were  
89 applied, presence of other TP cannot be excluded.

90 In this context, we intended (i) to clear the exact structure of the previously reported chlordecone  
91 TP and (ii) to extend our knowledge on the structural diversity of chlordecone TP possibly  
92 formed in laboratory and in the field in order to question the paradigm of chlordecone  
93 environmental non-biodegradability. To address these issues, we applied a dual GC-MS- and  
94 LC-HRMS-based approach on both microbiological and chemical degradation processes and also  
95 on FWI soil, water and sediments samples.



## 97 MATERIAL AND METHODS

### 98 **Chemicals and Analytics**

99 All used chemicals, analytical and purification methods are described in detail in Supporting  
100 Information (SI) (Supporting Methods).

### 101 **Extraction of natural samples**

#### 102 **Field sites and soil sampling**

103 Each sample was collected in Martinique Island. Soils (andosol, nitisol, ferralsol) coming from  
104 the vicinity of the “Montagne Pelée” volcano and bed sediments were sampled from the 0–30 cm  
105 layer and conserved in glass box; whereas river and mangrove water were collected from the 0–  
106 30 cm above the surface with glass bottles (Table S4).

#### 107 **Procedure for sample chemical extraction**

108 Each sample was extracted in duplicate. For soils and sediments: to 4 g of crude sample, 15 mL  
109 of milli Q water was added, followed by acidification to pH 1 with HCl (1 M) and vortex. After  
110 decantation the supernatant was extracted with DCM (12 x 15 mL) and the pellet was washed  
111 twice with DCM (15 mL). For river and mangrove water: 0.75 L of water sample was acidified to  
112 pH 1 with HCl (1 M) and extracted with DCM (12 x 350 mL). In each case, organic layers were  
113 pooled, concentrated *in vacuo* and analyzed in duplicated injection using GC-MS (in  
114 hexane/acetone 85:15) and LC-MS (in 10 mM NH<sub>4</sub>OAc buffer /MeCN 4:1) protocols.

### 115 **Production and purification of chlordecone main TP**

116 TP productions were monitored by GC-MS and LC-MS.

## 117 TP A1

118 To a solution of chlordecone (100 mg,  $2.0 \times 10^{-4}$  mol, 1 eq) in degassed water (300 mL) were  
119 added sodium sulfide (2.2 g,  $2.8 \times 10^{-2}$  mol, 140 eq.) and vitamin B<sub>12</sub> (40 mg,  $2.9 \times 10^{-5}$  mol, 0.15  
120 eq.). The reaction was carried out under N<sub>2</sub> atmosphere at room temperature (rt) for 30 h. It was  
121 then quenched with HCl (6 M) to pH 4.0 and degassed with N<sub>2</sub> for one hour to evacuate  
122 hydrogen sulfide. The aqueous reaction mixture was extracted with DCM (3 x 200 mL) and the  
123 combined organic phases were concentrated *in vacuo* to give a brown crude oil. A first  
124 purification step was performed using a Combi Flash® Companion® Elution at a flowrate of 40  
125 mL/min using heptane as solvent A and a mixture of DCM/(CH<sub>3</sub>)<sub>2</sub>CO (1:1; V/V) as solvent B.  
126 Elution started at 0% B for 7 min, followed by a linear gradient reaching 50% B within 5 min, a  
127 second linear gradient reaching 100% B within 3 min and remained 15 min at 100% B. Fractions  
128 containing A1 (from 8 to 29 min) were pooled and concentrated under reduced pressure. A  
129 second purification step was performed using a preparative HPLC system. Isocratic elution made  
130 of tetrahydrofuran/MeCN/(NH<sub>4</sub>)<sub>2</sub>CO<sub>3</sub> buffer (10 mM, pH 9.5) (29:29:42; V/V/V) was applied at  
131 a flowrate of 20 mL/min. Fractions containing A1 (retention time of 9 min) were pooled,  
132 acidified to pH 3 with HCl (6 M), extracted 3 times with DCM, and concentrated under reduced  
133 pressure, to give the title compound A1 (46.4 mg;  $9.8 \times 10^{-5}$  mol; 50%) as a white solid. All NMR,  
134 GC-MS and LC-HRMS analyses for A1 are available in Figures S16, S23, S27-S28.

## 135 TP B1, B2 and B3/B4

136 To a solution of chlordecone (200 mg,  $3.9 \times 10^{-4}$  mol, 1 eq.) and vitamin B<sub>12</sub> (60 mg,  $5.8 \times 10^{-5}$  mol,  
137 0.15 eq.) in degassed H<sub>2</sub>O/MeOH 64:36 (250 mL), was added titanium(III) citrate (50 mL,  $3.3$   
138  $10^{-3}$  mol, 8.4 eq.) basified to pH 12.7 with NaOH (3 M). Reaction mixture was stirred under N<sub>2</sub>

139 atmosphere at room temperature for 80 min and, quenched by contact with O<sub>2</sub>. Extraction with  
140 pentane (5 x 250 mL) followed by concentration under reduced pressure gave rise to a white  
141 crude solid. B1, B2 and B3/B4 were purified using a preparative HPLC system. Isocratic elution  
142 (MeCN/H<sub>2</sub>O 7:3; v/v) was applied at a flowrate of 25 mL/min. Fractions containing B1  
143 (retention time of 42 min), B2 (retention time of 28 min) and B3/B4 (retention time of 32 min)  
144 were pooled separately, extracted 3 times with pentane and concentrated under reduced  
145 pressure. Each compound was then purified through PLC (Preparative Layer Chromatography;  
146 Merck, PLC Silica gel, 1 mm, F<sub>254</sub>, 20 x 20) (cyclohexane/EtOAc 9:1); B1, B2 and B3/B4  
147 retardation factors were respectively 0.78, 0.68 and 0.88. B1 (32.6 mg; 1.2 10<sup>-4</sup> mol; 30%), B2  
148 (3.0 mg; 1.2 10<sup>-5</sup> mol; 3%) and B3/B4 (4.1 mg; 1.3 10<sup>-5</sup> mol; 4%) were finally obtained as white  
149 solids. All NMR, GC-MS and LC-HRMS analyses for B1, B2, B3-B4 are available in Figures  
150 S17-S18, S23, S29-S45. <sup>13</sup>C-enriched B1 synthesis and purification protocols are described in SI  
151 (Supporting Methods).

## 152 TP C1, C2, C3 and C4

153 To a solution of chlordecone (100 mg, 2.0 10<sup>-4</sup> mol, 1 eq.) and vitamin B<sub>12</sub> (40 mg, 2.9 10<sup>-5</sup> mol,  
154 0.3 eq.) in degassed water/acetone 3:1 (300 mL), was added zero-valent iron (2 g, 3.6 10<sup>-2</sup> mol,  
155 182 eq.). The reaction mixture was carried out in a glovebox (N<sub>2</sub>/H<sub>2</sub>, 98:2, V/V) at room  
156 temperature for 2 months. After quenching by contact with O<sub>2</sub>, acetone was evaporated under  
157 reduced pressure, the resulting aqueous phase was acidified to pH 1 (HCl 6 M) and extracted  
158 with DCM (10 x 100 mL). The combined organic layers were finally concentrated under reduced  
159 pressure. A first purification step was carried out using preparative HPLC. Elution was performed  
160 at a flowrate of 25 mL/min using NH<sub>4</sub>OAc buffer (10 mM ; pH 7 adjusted with NH<sub>4</sub>OH) as  
161 solvent A and MeCN as solvent B. Elution started at 12% B for 4 min, followed by a linear

162 gradient reaching 29% B within 11 min, followed by a second linear gradient reaching 50% B  
163 within 15 min and a third one reaching 100% B within 6 min. Fractions containing respectively  
164 C1-C2 and C3-C4 (from 21.5 to 23 and 25 to 28 min respectively) were pooled and MeCN was  
165 removed under reduced pressure. The resulting aqueous layers were basified to pH 10 with  
166  $\text{K}_2\text{CO}_3$  (10 mM, pH 10), washed with 50 ml of hexane/EtOAc 95:5 (V/V), acidified to pH 3 with  
167 HCl (12 M) and extracted three times with hexane/EtOAc 95:5 (V/V). The combined final  
168 organic layers were concentrated under reduced pressure to give the title compounds C1-C2 (3.0  
169 mg;  $1.0 \cdot 10^{-5}$  mol; 5%) and C3-C4 (1.5 mg;  $5.7 \cdot 10^{-6}$  mol; 3%) as white solids. All NMR and LC-  
170 HRMS analyses for C1-C2 and C3-C4 are available in Figures S24-S25, S46-S56.

171 Production, and purification protocols of transformation products D1, D2, D3 and D4 are  
172 described in SI (Supporting Methods). All NMR and LC-HRMS are available in Figures S19-  
173 S20, S23, S57-S66.

174

### 175 **Anoxic microbiological experiments**

176 Liquid/solid microcosm experiments and analytical protocols are described in SI (Supporting  
177 Methods).

178

## 179 **RESULTS AND DISCUSSION**

### 180 **Diversity of chlordecone TP from anoxic biodegradation**

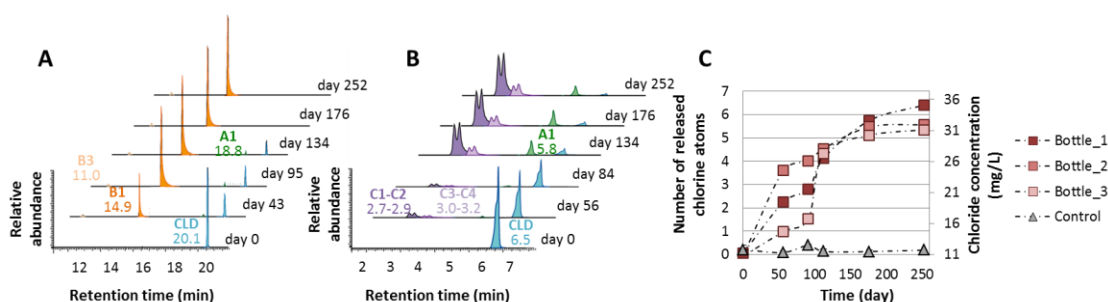
181 Both early[34, 35] and recent[36, 37] studies of bacterial chlordecone degradation suggested two  
182 main TP families: hydrochlordecones from reductive dechlorination reactions (family A), and

183 polychloroindenes formed after ring-opening and elimination steps (family B) (**Figure 1**).  
184 Another study with the Archaeon *Methanosarcina thermophila* suggested quantitative  
185 chlordecone conversion into unknown polar and nonpolar metabolites based on silica gel thin-  
186 layer chromatography (TLC)[38]. The technique used for hydrochlordecones and  
187 polychloroindenes TP produced by consortium 86[36] was applied here to confirm the  
188 uniqueness of TP formed during bacterial and archaeal chlordecone degradation. Retardation  
189 factor (Rf) values for polychloroindenes corresponded to those of nonpolar TP in  
190 *Methanosarcina thermophila* cultures[38], while hydrochlordecones behaved like chlordecone  
191 (Figure S1). Hence, hydrochlordecones cannot represent the previously reported unknown  
192 archaeal polar TP and define a novel, so far undescribed, family of chlordecone TP.

193 Further novel chlordecone TP during incubation of chlordecone in presence of consortium 86  
194 and *Citrobacter* sp. 86 were searched for using measurement of chloride concentration, GC-MS,  
195 GC-FID, and LC-MS-Orbitrap. After 250 days of incubation, chloride concentrations increased  
196 by  $18.8 \pm 0.9$  mg/L (i.e.,  $5.5 \pm 0.3$  Cl atoms per chlordecone molecule) in consortium 86  
197 cultures, and by  $19.7 \pm 1.7$  mg/L (i.e.,  $5.8 \pm 0.5$  Cl atoms per chlordecone molecule) in  
198 *Citrobacter* sp. 86 cultures, corresponding to complete chlordecone transformation (**Figure 1**  
199 and Figure S13). Chloride recovery indicated the occurrence of other, so far undetected highly  
200 dechlorinated TP, in addition to previously reported main TP B<sub>1</sub> (C<sub>9</sub>Cl<sub>5</sub>H<sub>3</sub>) and A<sub>1</sub>  
201 (C<sub>10</sub>Cl<sub>9</sub>H<sub>3</sub>O<sub>2</sub>)[36].

202 While GC-FID analysis confirmed that volatile metabolites A1 and B1 occurred in all microbial  
203 experiments (Figure S14), four new polar chlorinated TP (C<sub>i</sub>, i=1,2,3,4) of generic formula  
204 C<sub>10</sub>Cl<sub>4-n</sub>O<sub>2</sub>H<sub>4+n</sub> (n=0,1) were also identified in all chlordecone-degrading microcosms using LC-  
205 ESI-MS-Orbitrap in negative mode (**Figure 1** and Figures S24-S25). TLC analysis initially

206 indicated a high match with unknown polar TP[38]. Tandem mass spectrometry using collision  
207 induced dissociation (CID) (LC-MS<sup>2</sup> and LC-MS<sup>3</sup>) then showed that the four TP followed  
208 similar fragmentation patterns with characteristic CO<sub>2</sub> loss. The UV-visible absorption profiles of  
209 all TP Ci (i=1,2,3,4) were close to those reported and tentatively assigned to  
210 pentachloroindenes[39] (Figure S2).



211  
212 **Figure 1.** TP production during chlordecone degradation by *Citrobacter* sp. 86 (A) GC-MS full  
213 scan analysis during chlordecone degradation by *Citrobacter* sp. 86 and detection of CLD (blue),  
214 A1 (green), B1 (orange) and B3 (yellow) TP. (B) TP production during chlordecone degradation  
215 by *Citrobacter* sp. 86 using LC-MS-Orbitrap analysis and detection of CLD (blue), A1 (green),  
216 C1 (purple), C2 (purple), C3 (magenta) and C4 (magenta) TP Extract ion chromatograms for  
217 quasimolecular ion [M-H]<sup>-</sup> of m/z = 506.6797; 472.7187; 296.8852; 260.9271 (C) Chloride  
218 concentration and average number of released chlorine atoms per consumed chlordecone  
219 molecule during chlordecone degradation by *Citrobacter* sp. 86.

220  
221 In parallel, laboratory microcosms with contaminated FWI soils (typically from 0.1 to 30 mg  
222 chlordecone/kg of dry soil) were incubated for three years under N<sub>2</sub>/H<sub>2</sub> atmosphere at room  
223 temperature and in the dark to evaluate the capacity of native FWI soil microbiotes to degrade  
224 residual chlordecone (Figure S3). For each condition (soil/liquid medium), several replicates  
225 were collected over time using a sacrificial approach to evaluate produced chlordecone TP. All  
226 analyzed samples contained several chlordecone TP among which 10 new derivatives.



227 Chlordecol, a known chlordecone contaminant in former commercial formulations that is present  
228 in FWI soils at low level[40], was also systematically found.

229 The GC-FID technique turned out to be inappropriate due to high background from soil samples  
230 and low chlordecone concentration. Successive liquid-liquid extractions were thus combined to  
231 concentrate chlordecone TP prior to GC-MS and LC-ESI-MS-Orbitrap analyses (Tables S2-S3).  
232 Newly identified chlordecone TP were classified into two families (named D and E), with  
233 respective generic formula  $C_{11}Cl_{4-n}O_2H_{6+n}$  ( $n=0, 1$ ) and  $C_{12}Cl_{4-n}O_2H_{8+n}$  ( $n=0, 1$ ). MS spectra  
234 from GC-MS analysis revealed the likely occurrence of methyl and ethyl ester moieties for  
235 families D and E, respectively. A series of fragments ( $C_9Cl_xH_y^+$ ,  $x = 5, 4, 3, 2$ ;  $y = 4, 3, 2$ ) were  
236 common to compounds Bi ( $i = 1, 2, 3$ ), Dj ( $j = 1, 2, 3, 4$ ) and Ek ( $k = 1, 2, 3, 4$ ), suggesting a  
237 shared aromatic polychloroindene core ring system, with methyl- and ethyl-polychloroindene-  
238 carboxylate structures for D and E families, respectively (**Figure 2** and Figures S19-S22).  
239 Altogether, 19 chlordecone TP were discovered from liquid and solid microcosm experiments  
240 using the untargeted analytical approach (Figure S15).

241

## 242 **Production and purification of chlordecone TP**

243 The major chlordecone TP detected in biodegradation experiments (**Figure 2**) were synthesized  
244 and purified on a (sub)milligram scale to achieve complete structural elucidation using NMR  
245 spectroscopy. Chlordecone degradation by bacterial consortia and *Citrobacter* sp. 86 takes  
246 several weeks to several months[36] and only allowed partial TP elucidation (A1, B1 and Ci  
247 ( $i=1,2,3,4$ )). We reasoned that different chemical degradation conditions may favor sufficient  
248 production of each type of TP for subsequent purification. For example, photochemical

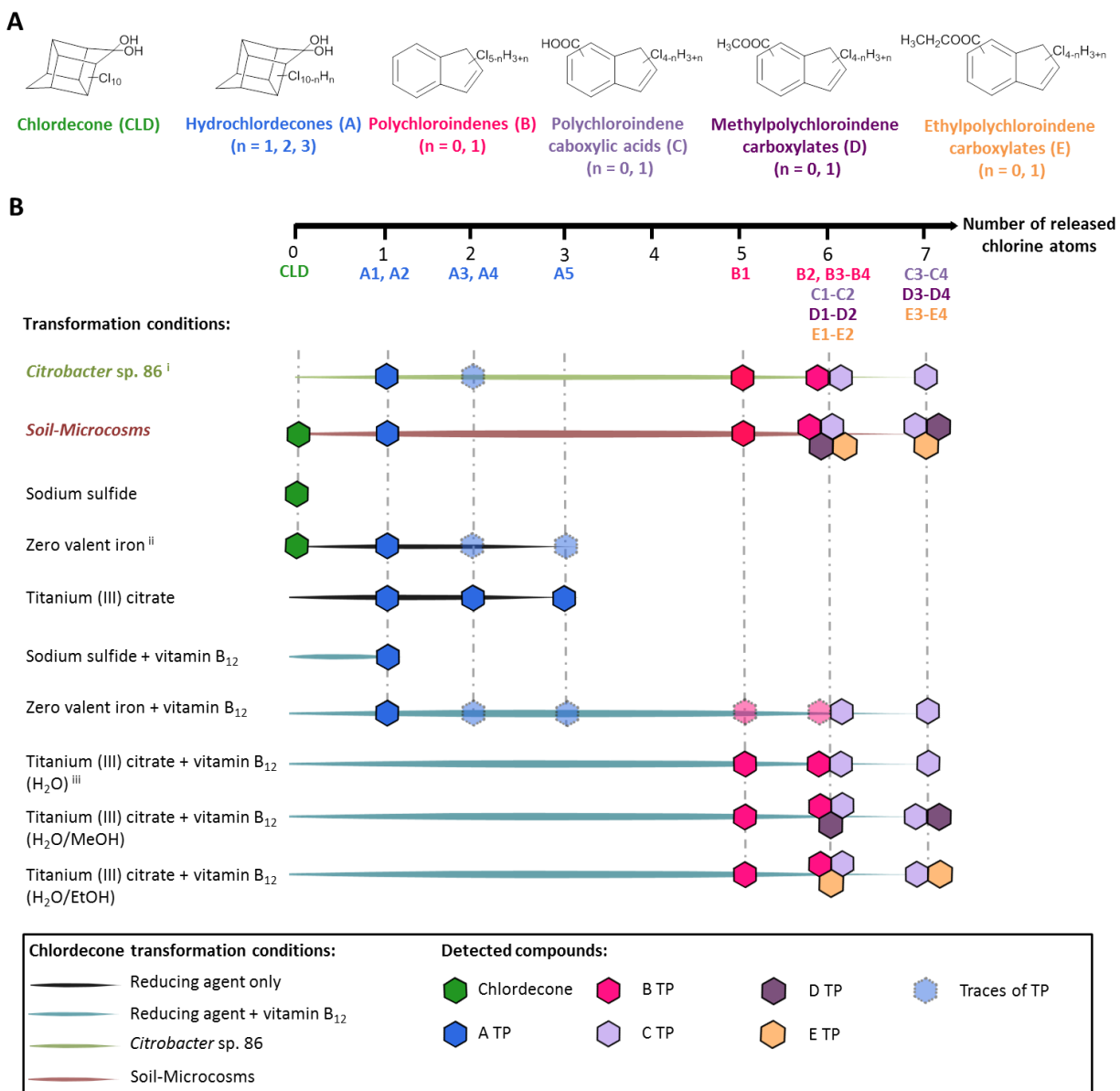
249 degradation led to mono- and di-hydrochlordecone derivatives, each with about 1% yield[41].  
250 All other conditions under which chlordecone degradation was reported required a reducing  
251 agent, either alone[42] or in combination with vitamin B<sub>12</sub>[37-39, 43-45].

252 Thus, monitoring of chlordecone degradation by GC-MS and LC-MS was used here to determine  
253 suitable conditions for selective formation of metabolites from each TP family, including the  
254 three novel TP families identified here for the first time. Addition of reducing agents and metal  
255 complexes previously applied to enhance mirex degradation[46] were tested (Table S1).  
256 Application of degradation conditions (acetoin, vitamin B<sub>12</sub> and methanol) previously shown to  
257 selectively lead to the formation of polychloroindenes[39] also resulted in C and D families of  
258 TP. Similarly, two other protocols (vitamin B<sub>12</sub>, ethanol and either zero-valent zinc or 1,4-  
259 dithiothreitol) reported to result in a tentatively assigned pentachloroindene as a unique  
260 chlordecone TP[43] also yielded lower chlorinated indenes, as well as several TP of the C and E  
261 families (Figure S7).

262 Eventually, we selected 5 protocols of TP production among the 21 tested degradation conditions  
263 (Table S1, **Figure 2**). For instance, titanium citrate and zero-valent iron without vitamin B<sub>12</sub>  
264 selectively resulted in selective formation of hydrochlordecones. Most importantly, the  
265 combination of sodium sulfide and vitamin B<sub>12</sub> specifically led to the production of  
266 monohydrochlordecone A1 (in up to 50% yield after purification). Polychloroindenes and  
267 polychloroindene carboxylic acids were formed at highest levels upon amendment with vitamin  
268 B<sub>12</sub> (**Figure 2** and Table S1). Worthy of note, tested reducing agents did not specifically favor TP  
269 from one of these two families, but systematically produced a mixture of B and C TP. Zero-  
270 valent iron may slightly enhance production of C family TP, whereas TP of the B family  
271 prevailed in assays with titanium citrate. On a preparative scale, addition of methanol

272 significantly improved the reproducibility of B family TP production. From the same  
273 experimental batch, B1, B2 and B3 TP were isolated with yields up to 30%, 3% and 4%,  
274 respectively. Compounds C1-C2 (5% yield) and C3-C4 (3% yield) were obtained as non-  
275 separable pairs of isomers. Indeed, when a single C<sub>i</sub> (i = 1,2,3,4) TP was isolated using  
276 preparative HPLC, partial interconversion to its isomer was observed after evaporation,  
277 demonstrating the existence of an equilibrium between pairs of isomers. Finally,  
278 supplementation of reaction mixtures leading to B and C TP with either methanol or ethanol led  
279 to production of either D or E TP. Purification of pairs D1-D2 and D3-D4 was achieved in 5%  
280 and 3% yield, respectively.

281



282

(i) Chaussonnerie et al., 2016

(ii) Belghit et al., 2015

(iii) Chiu &amp; Reinhard 1995; Lewis et al., 1996; Rodriguez-Garrido et al., 2004

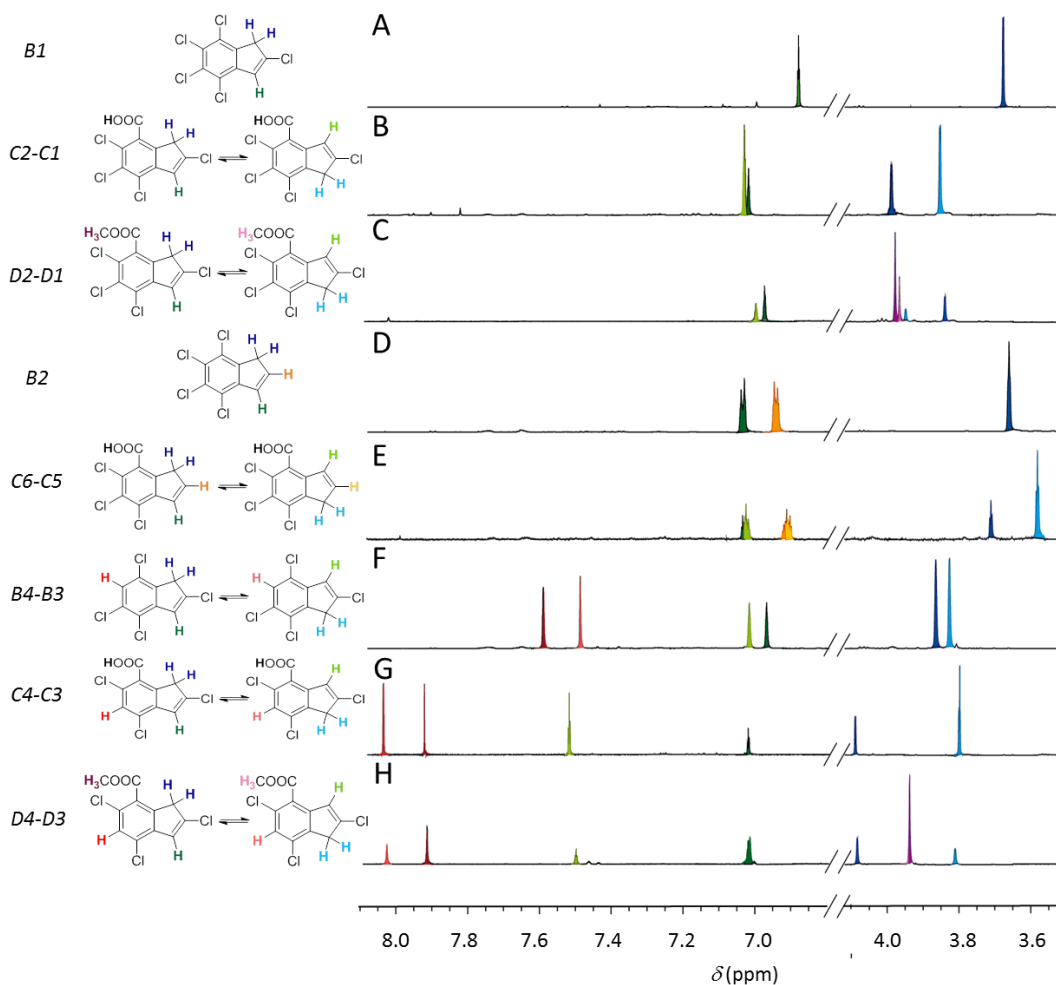
283 **Figure 2.** Chlordecone TP (A) Five families of observed chlordecone TP (B) Chemical  
 284 conditions for chlordecone degradation and released of one to seven chloride atoms. 8-  
 285 monohydrochlordecone was assigned to A2. A3 and A4 correspond to dihydrochlordecones, and  
 286 A5 to a trihydrochlordecone.

287

## 288 **Structural elucidation of chlordecone TP**

289 A1, the major hydrochlordecone observed in recent work[36] previously identified as either 9- or  
290 10-monohydrochlordecone[42] and also formed after In Situ Chemical Reduction Daramend®  
291 treatment of an FWI field[47], was identified here as 10-monohydrochlordecone. Indeed,  
292 replacement of a chlorine atom by a hydrogen in chlordecone can only lead to four different  
293 regioisomers, i.e. 6-, 8-, 9- or 10-monohydrochlordecones (Figure S5). The obtained <sup>13</sup>C NMR  
294 spectrum for this TP showed six signals, indicating the presence of a conserved vertical plane of  
295 symmetry in A1. To satisfy this feature, the hydrogen atom can only be positioned on carbon 10.

296 TP belonging to TP families B, C, D and E likely possess an indene core structure as assigned  
297 previously to TP B1 following chemical conversion to commercially available indane[37]. The  
298 same hydrogenation protocol for TP pairs C1-C2 and C3-C4 unambiguously resulted in the  
299 formation of indane-4-carboxylic acid confirming that TP family C features a carboxyindene  
300 aromatic ring system (Figure S8). Equilibria between pairs of Ci (i=1,2,3,4) corresponded to a  
301 keto-enol mediated isomerization (Figure S12), as previously shown for 1*H*-indene-1-carboxylic  
302 acid and 1*H*-indene-3-carboxylic acid in water[48]. TP C1, C2, C3 and C4 were assigned to  
303 tetrachloroindene-4-carboxylic acid, tetrachloroindene-7-carboxylic acid, trichloroindene-4-  
304 carboxylic acid and trichloroindene-7-carboxylic acid, respectively. Esterification of these pairs  
305 of TP using methanol led to the formation of Di (i=1,2,3,4), while ethanol gave rise to Ej  
306 (j=1,2,3,4) (Figure S6). This confirmed the presence of methyl- and ethyl-indene-carboxylate  
307 structures and ester functions on the indene ring for Di (i=1,2,3,4) and Ej (j=1,2,3,4) TP, i.e.  
308 either on carbon 4 or 7.



309

310 **Figure 3.** Relevant  $^1\text{H}$  NMR spectra regions of selected indene-based TP (600 MHz). Data were  
 311 recorded in  $(\text{CD}_3)_2\text{CO}$  excepted for B1, recorded in  $\text{CDCl}_3$ . The spectral regions  $\delta 3.5\text{-}4.1$  ppm  
 312 and  $\delta 6.8\text{-}8.1$  ppm are shown for B1 (A), C1-C2 (B), D1-D2 (C), B2 (D), C5-C6 (E), B3-B4 (F),  
 313 C3-C4 (G), D3-D4 (H).

314

315 Pentachloroindene B1 was then used as a reference compound for the 4 identified indene-based  
 316 TP families (**Figure 3**) in subsequent NMR analyses since it was the first TP to have been  
 317 elucidated by NMR.  $^1\text{H}$  NMR and COSY spectra indicated an allylic domain at  $\delta 3.7$  ppm (d,  $J =$   
 318 1.4 Hz, 2 H) coupled to an aromatic proton at  $\delta 6.87$  ppm (t,  $J = 1.4$  Hz, 1 H). For indene

319 systems, a value of 1.4-Hertz indicates a  $^3J$ - or  $^4J$ -type coupling constant (Figure S26) leaving  
320 possibilities for a proton at carbon position 2, 3 or 7 for the structure of B1. Further NMR  
321 analyses of B1 (Figures S27-S33) did not allow to elucidate the proton position, so  $^{13}\text{C}$ -enriched  
322 B1 was synthesized from commercially available  $^{13}\text{C}_8$ -CLD to perform a  $^{13}\text{C}$ - $^{13}\text{C}$  COSY  
323 experiment (Figure S35). Each carbon atom could thereby be linked to its direct carbon  
324 neighbors, and B1 could then be eventually unequivocally assigned to 2,4,5,6,7-pentachloro-1*H*-  
325 indene by way of a HSQC experiment (Figure S32).

326 TP C1-C2 and D1-D2 represented mixtures of isomers according to  $^1\text{H}$  NMR and COSY  
327 experiments (**Figure 3** and Figures S48, S57). Comparison of  $^1\text{H}$  and  $^{13}\text{C}$  NMR spectra  
328 highlighted the similarity between TP B1, C1-C2, and D1-D2 (**Figure 3** and Figures S30, S47,  
329 S58), and all protons of C1-C2 and D1-D2 were unambiguously positioned on the five-  
330 membered ring moiety of the indene structure. Interestingly, the HMBC experiment of C1-C2  
331 showed only one cross correlation peak between the most deshielded allylic protons and a  
332 carboxylate carbon atom from one of the two carboxyl groups (Figure S50). This set of  $^1\text{H}$  and  
333  $^{13}\text{C}$  signals was thus assigned to 2,5,6,7-tetrachloro-1*H*-indene-7-carboxylic acid, i.e. C2, and the  
334 other set to 2,5,6,7-tetrachloro-1*H*-indene-4-carboxylic acid, i.e. C1 (**Figure 3**). The same  
335 deshielding effect was responsible for chemical shift differences for both  $^1\text{H}$  and  $^{13}\text{C}$  spectra  
336 between allylic signals of D1-D2, although no difference in HMBC spectrum was observed for  
337 D1-D2. This allowed to unequivocally assign the sets of  $^1\text{H}$  and  $^{13}\text{C}$  signals in these TP (**Figure 3**  
338 and Figures. S57-S61).

339 TP B2 and C5-C6 showed the same  $^1\text{H}$  NMR pattern (i.e. one triplet in the allylic domain, and  
340 two doublets of triplets in the aromatic domain) that allowed them to be distinguished from B1,  
341 C1-C2 and D1-D2 (**Figure 3**). All corresponding NMR signals can be affiliated to the

342 cyclopentadiene part of the indene structure (Figure S26). Structures of B2, C5 and C6 TP were  
343 thus identified as 4,5,6,7-tetrachloro-1*H*-indene, 5,6,7-trichloro-1*H*-indene-4-carboxylic acid and  
344 4,5,6-trichloro-1*H*-indene-7-carboxylic acid, respectively.

345 Even if tetrachloroindene B3 appeared as a single compound in GC-MS analysis, its <sup>1</sup>H NMR  
346 spectrum showed two similar sets of signals indicating two regioisomers, arbitrarily termed B3  
347 and B4. <sup>1</sup>H NMR spectra of C3-C4 and D3-D4 strongly resembled that of B3-B4 (**Figure 3**). By  
348 analogy with 2,4,5,6,7-pentachloroindene B1, the methylene groups and the less deshielded  
349 aromatic protons of B3-B4, C3-C4 and D3-D4 were positioned on carbons 1 and 3 of the  
350 corresponding indene isomers. An additional coupling of 0.6-0.7 Hz was observed for B3, C3  
351 and D3 only, i.e. between methylene protons on carbon position 1 and the most deshielded  
352 aromatic proton. In non-substituted indene, such a weak value is observed for methylene protons  
353 coupled with aromatic protons placed on carbons 6 and 7 (Figure S26). Therefore, the last  
354 aromatic proton of B3, C3 and D3 was positioned on either carbon 6 or 7. Worthy of note,  
355 indene isomerization formally transferred substituents from carbon position 4 to position 7, and  
356 from position 5 to position 6. The complexity of the <sup>13</sup>C spectra did not permit complete  
357 elucidation. However HMBC and HSQC experiments indicated that both B3 and B4 featured a  
358 chlorine substituent at carbon position 4. Hence, B3 possessed a chlorine atom on carbon  
359 position 7, leaving only one plausible structure for B4, i.e. 2,4,5,7-tetrachloroindene. In the case  
360 of C3 and D3 (and as also observed for C4 and D4), a strong cross correlation peak in HMBC  
361 was systematically detected between the unassigned proton and the carbon from the carboxylic  
362 and ester functions. This excluded a <sup>5</sup>J(H-C) coupling and thus discarded carbon position 7 for  
363 the remaining aromatic proton. Finally, C3-C4 and D3-D4 were assigned to 2,5,7-trichloro-1*H*-



364 indene-4-carboxylic acid, 2,4,6-trichloro-1*H*-indene-7-carboxylic acid, methyl 2,5,7-trichloro-  
365 1*H*-indene-4-carboxylate, methyl 2,4,6-trichloro-1*H*-indene-7-carboxylate, respectively.

366 As previously shown, E<sub>i</sub> (i=1,2,3,4) TP were ethylated forms of C<sub>j</sub> (j=1,2,3,4) carboxylates  
367 (Figure S6). Consequently, E1-E2 and E3-E4 correspond to ethyl 2,5,6,7-tetrachloro-1*H*-indene-  
368 4-carboxylate, ethyl 2,5,6,7-tetrachloro-1*H*-indene-7-carboxylate, ethyl 2,5,7-trichloro-1*H*-  
369 indene-4-carboxylate, ethyl 2,4,6-trichloro-1*H*-indene-7-carboxylate, respectively.

370 NMR analyses combined with chemical derivatization work further allowed to identify and  
371 structurally elucidate 19 TP for the first time (Figure S15). This significantly expands the list of  
372 fully characterized chlordecone TP, hitherto only comprised of chlordecol, 8-  
373 monohydrochlordecone and 2,8-dihydrochlordecone[41] and corrects previous findings[39, 42,  
374 43].

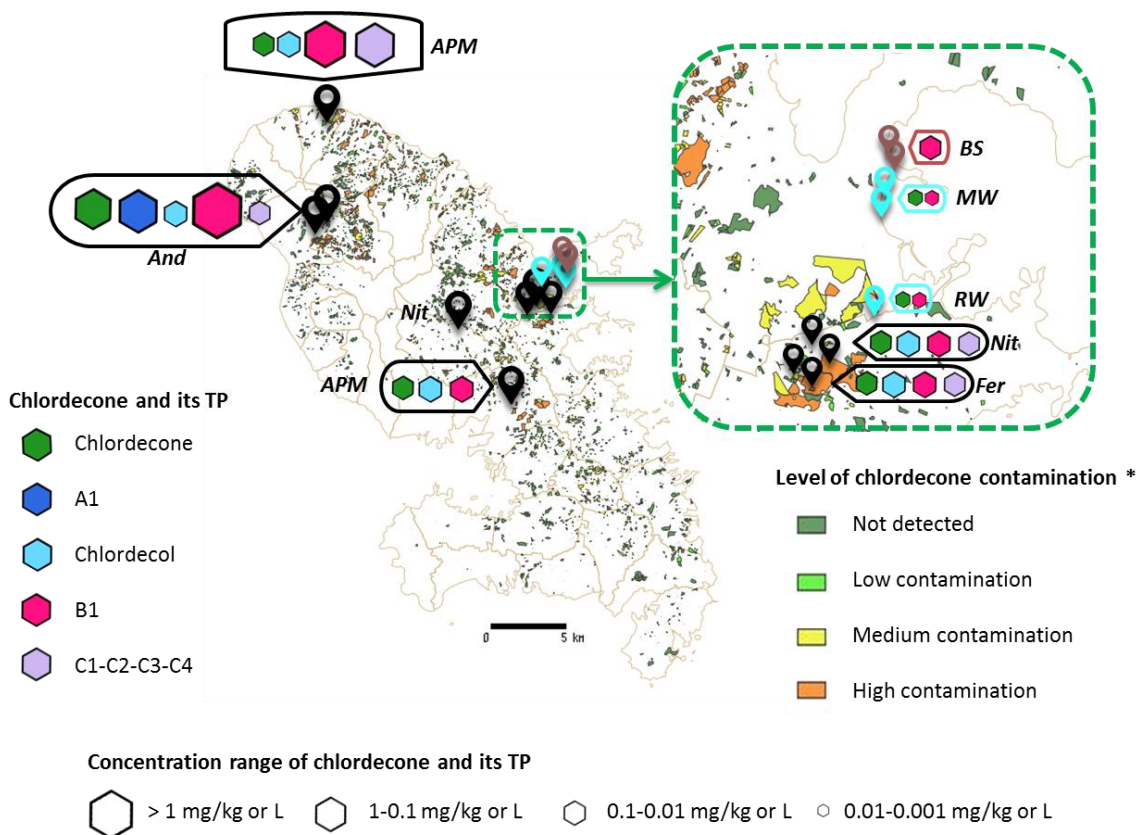
375

### 376 **Natural chlordecone degradation on the Martinique Island**

377 In order to validate laboratory results and the discovery of novel chlordecone TP, several  
378 representative environmental compartments contaminated with chlordecone were sampled on  
379 Martinique Island, including Galion River basin (water, bed sediments and mangrove)[29, 49],  
380 andosol, nitisol and ferralsol soils[47, 50], as well as ashes and pumice stones (Table S4).  
381 Samples were analyzed using a different extraction protocol than the recommended ISO 17025  
382 standard[31, 50, 51] in order to preserve their initial chemical composition. Specifically, the  
383 initial drying step was omitted for soil analysis to limit volatilization of B, D and E TP. All  
384 extracted samples were concentrated and analyzed using GC-MS and LC-HRMS in full-scan  
385 mode. Even if full-scan mode reduces intrinsic analytical sensitivity, it enhances the robustness

386 of TP assignment using isotopic patterns, and also allows detection of other chlorinated  
387 analogues. Concentrations of the most abundant TP (A1, chlordecol, B1, C1-C2 and C3-C4)  
388 were estimated using external calibration with purified TP standards (Figure S11). Significant  
389 variability of extraction efficiency in soils was observed, as a function of both TP structures and  
390 matrix nature, as shown for chlordecone and metabolite B1 in andosol and nitisol soils (Figure  
391 S10), so non-corrected concentration ranges were provided here. Chlordecone concentration in  
392 Galion River was in the range found in previous studies (0.1-2  $\mu\text{g/L}$  in Galion River[29]).  
393 Worthy of note, the concentration of B1 was in the same order of magnitude as chlordecone  
394 itself (0.1-2  $\mu\text{g/L}$ ) in both Galion River and nearby mangrove (**Figure 4** and Table S7).  
395 Moreover, B1 could be detected in bed sediments where chlordecone was absent. In soils,  
396 chlordecone concentrations were roughly 10-fold lower than previously reported typical values  
397 of dried samples (0.01-1 mg/kg compared to 0.8-5 mg/kg (dry weight) in Martinique[47, 50]).  
398 Chlordecone TP were amply found in solid matrices, with B1 and chlordecol being detected in  
399 all soil samples excepted in chlordecone-free nitisol 926. TP B1 fluctuated in the range between  
400 0.05 to 5 mg/kg. In contrast, chlordecol was systematically around 0.05 mg/kg, in agreement  
401 with previous studies[40]. TP A1 was only observed at significant levels in the two andosol soils  
402 (0.05-1 mg/kg). C3-C4 TP, less chlorinated than C1-C2 TP, appeared more frequently and at a  
403 higher level, especially in one nitisol soil (above 1 mg/kg). The low concentration of 8-  
404 monohydrochlordecone ( $< 0.01$  mg/kg) agreed with previous studies[33]. While methyl  
405 polychloroindene-carboxylates were absent of all samples, many other TP were detected at low  
406 level, including di-, tri-hydrochlordecones, tetrachloroindenes (B2, B3-B4), ethyl  
407 polychloroindene-carboxylates (E1-E2)(**Figure 4** and Table S7). The untargeted analytical  
408 approach also led to the discovery of a monohydrochlordecol derivative and two dichloroindene

409 carboxylic acids, which had never been observed before in laboratory biodegradation  
 410 experiments (Table S7).



411

412 **Figure 4.** Distribution of samplings in Martinique and estimation of chlordecone and TP  
 413 concentrations. Martinique map that was taken from  
 414 [http://carto.geomartinique.fr/1/layers/pref\\_chlordecone\\_analyse\\_sol\\_s\\_972.map](http://carto.geomartinique.fr/1/layers/pref_chlordecone_analyse_sol_s_972.map), represents  
 415 chlordecone contamination according to 2018 sampling campaign. \*indicates chlordecone  
 416 contamination level and were established by the previous quoted website. Samples were  
 417 classified into type: andosol (And), nitisol (Nit), ferralsol (Fer), ashes and pumice stones (APM),  
 418 bed sediments (BS), mangrove water (MW), river water (RW) and samplings were done in  
 419 duplicate. If duplicates were closed, they showed the same chlordecone TP distribution.  
 420 Samplings were done according to location icons (black ones represent soil samplings, brown:  
 421 bed sediment and blue: water).

422

423 The only previously reported chlordecone derivatives were chlordecol and 8-  
424 monohydrochlordecone, present in FWI soils at much lower levels than chlordecone (0.03-0.5  
425 mg/kg, and 0.05-0.2 mg/kg respectively)[33, 40]. Chlordecol and 8-monohydrochlordecone were  
426 actually known contaminants from commercial chlordecone, and were as such the only  
427 chlordecone derivatives included in targeted analyses until today. Even if our dual GC-MS- and  
428 LC-HRMS-based approach was intrinsically less sensitive, it allowed us to uncover in  
429 environmental samples the presence of numerous hidden chlordecone TP.

430 Altogether, this study shows that four of the five identified TP families occur in natural soil and  
431 water samples from Martinique, and include a total of 17 TP initially absent in chlordecone  
432 commercial formulations. Pentachloroindene B1 was the most prominent TP, with levels similar  
433 to those of chlordecone (**Figure 4**). Bacteria known to transform chlordecone into A, B and C  
434 families[36] were searched in the studied soil samples using Illumina sequencing of the 16S  
435 rRNA gene (V4-V5 amplicons) following DNA extraction. Only a very low frequency (1.4 to  
436  $2.10^{-4}$ ) of *Citrobacter* affiliated sequences was found, and this in only three of the investigated  
437 samples (918, 919 & 920). Thus, based on current knowledge of bacterial diversity associated  
438 with chlordecone degradation, the overall bacterial contribution to chlordecone degradation in  
439 Martinique native soils may not be identified yet.

440 Finally, exploratory soil/liquid microcosms were set up under anoxic conditions with three  
441 representative FWI soils contaminated with chlordecone, (i.e. one andosol (914), one nitisol  
442 (918) and one ferralsol (919)). These experiments were further used to inoculate liquid culture  
443 supplemented with 40 mg/L of chlordecone. Degradation in all experiments and the concomitant  
444 formation of TP (Figure S9) confirmed the intrinsic widespread natural chlordecone degradation

445 in natural FWI soils, as well as the production of many novel chlordecone TP that had hitherto  
446 remained undetected.

447 Taken together, our results raise the issue of the real extent of chlordecone pollution in the FWI  
448 that goes beyond the parent molecule and includes a significant number of TP. Their structural  
449 diversity illustrates the hitherto unsuspected extant complexity of processes and pathways.  
450 Further mechanistic investigations will benefit from the large panel of purified and elucidated  
451 TP. As phylogenetic analyses suggest strong differences between the FWI bacterial community  
452 and the previous reported bacteria associated with chlordecone degradation, it cannot be  
453 excluded that other chlordecone TP yet undetected may also be formed under field conditions.  
454 The paradigm of absolute chlordecone persistence taken for granted for decades[31] now clearly  
455 appears obsolete and calls for setting new monitoring and risk priorities. Synthetic access to this  
456 new panel of chlordecone TP opens the doors to accurate environmental quantification protocols,  
457 toxicological studies and biodegradation assays. Last but not least, the original untargeted dual  
458 GC/MS- and LC/HRMS-based approach we used may also be applied to other POP such as  
459 mirex which shares the same perchlorinated bishomocubane structure to assess their global  
460 environmental biodegradability.

461

462 ASSOCIATED CONTENT

463 **Supporting Information.**

464 The Supporting Information is available free of charge on the ACS Publications website at DOI:

465

## 466 AUTHOR INFORMATION

467 Corresponding Author

468 \* E-mail: [plsaaidi@genoscope.cns.fr](mailto:plsaaidi@genoscope.cns.fr) or [denis@genoscope.cns.fr](mailto:denis@genoscope.cns.fr).

469 Author Contributions

470 <sup>1</sup>M.C. and O.D.N. contributed equally471 <sup>2</sup>S.C., A.B. and D.M. also contributed equally

472 Notes

473 The authors declare no competing financial interest.

474

## 475 ACKNOWLEDGMENT

476 Support was provided by the INRA AIP Demichlord part of "Plan Chlordecone", Commissariat à  
477 l'Energie Atomique et aux Energies Alternatives (CEA), the Centre National de Recherche  
478 Scientifique (CNRS) and the University Evry Val d'Essonne (UEVE). MC work was funded by  
479 CEA and ODN work was supported by the "IDI 2017" project funded by the IDEX Paris-Saclay,  
480 ANR-11-IDEX-0003-02. We also thank Magalie Lesueur-Jannoyer and Cécile Fischer for  
481 helpful discussions; Olek Maciejak for assistance in NMR data collection; and Grégoire David,  
482 Eddy Elisée, Stéphanie Fouteau, Caroline Menguy, Charles Mottes, Tiffany Prevost and Luc  
483 Rangon for technical assistance. Institut de Chimie des Substances Naturelles , UEVE are  
484 acknowledged for NMR and MS facilities, and The Region Ile de France and CNRS for their  
485 contributions to NMR equipment.

486

## 487 REFERENCES

- 488 1. Matolcsy, C.; Nadasy, M.; Andriská, V., Pesticide chemistry. *Studies in environmental*  
489 *sciences* **1988**, *32*, 1-809.
- 490 2. NRC, Kepone/Mirex/Hexachlorocyclopentadiene An environment assessment.  
491 *Environmental Studies Board* **1978**.
- 492 3. Servien, R.; Mamy, L.; Li, Z.; Rossard, V.; Latrille, E.; Bessac, F.; Patureau, D.; Benoit,  
493 P., TyPol – A new methodology for organic compounds clustering based on their molecular  
494 characteristics and environmental behavior. *Chemosphere* **2014**, *111*, 613-622.
- 495 4. Carlson, D. A.; Konyha, K. D.; Wheeler, W. B.; Marshall, G. P.; Zaylskie, R. G., Mirex  
496 in the environment: its degradation to kepone and related compounds. *Science* **1976**, *194*, (4268),  
497 939-41.
- 498 5. Figge, K.; Rehm, H., On the behaviour of the insectide "kelevan" and its metabolites in  
499 the ecological system "potato field". *Journal of plant disease and protection* **1977**, *84*, 385-409.
- 500 6. Le Déaut, J. Y.; Procaccia, C., Les impacts de l'utilisation de la chlordécone et des  
501 pesticides aux Antilles: bilan et perspectives d'évolution. *OPECST* **2009**, 487.
- 502 7. Yang, R.; Wei, H.; Guo, J.; McLeod, C.; Li, A.; Sturchio, N. C., Historically and  
503 currently used Dechloranes in the sediments of the Great Lakes. *Environmental science &*  
504 *technology* **2011**, *45*, (12), 5156-63.
- 505 8. Bell, M. A.; Ewing, R. A.; Lutz Batelle, G. A., Reviews of the environmental effects of  
506 pollutants : I Mirex and Kepone. *United States Environmental Protection Agency* **1978**, 1-252.
- 507 9. Wang, B.; Iino, F.; Yu, G.; Huang, J.; Wei, Y.; Yamazaki, N.; Chen, J.; Chen, X.; Jiang,  
508 W.; Morita, M., HRGC/HRMS analysis of mirex in soil of Liyang and preliminary assessment of  
509 mirex pollution in China. *Chemosphere* **2010**, *79*, (3), 299-304.
- 510 10. Roche, H.; Salvat, B.; Ramade, F., Study on the contamination of marine organisms by  
511 pesticides from French Polynesia coral reef food web. *Rev Ecol* **2011**, *66*, 3-10.
- 512 11. Huggett, R. J.; Bender, M. E., Kepone in the James River. *Environmental science &*  
513 *technology* **1980**, *14*, (8), 918-923.
- 514 12. Vilardebo, A.; Beugnon, M.; Melin, P.; Lecoq, J.; Aubert, B., Chlordécone et autres  
515 insecticides dans la lutte contre le charançon du bananier *Cosmopolites sordidus* GERM. *Fruits*  
516 **1974**, *29*, (4), 267-278.
- 517 13. Fournier, A.; Feidt, C.; Lastel, M. L.; Archimede, H.; Thome, J. P.; Mahieu, M.; Rychen,  
518 G., Toxicokinetics of chlordecone in goats: Implications for risk management in French West  
519 Indies. *Chemosphere* **2017**, *171*, 564-570.
- 520 14. Epstein, S. S., Kepone--hazard evaluation. *The Science of the total environment* **1978**, *9*,  
521 (1), 1-62.
- 522 15. Multigner, L.; Ndong, J. R.; Giusti, A.; Romana, M.; Delacroix-Maillard, H.; Cordier, S.;  
523 Jegou, B.; Thome, J. P.; Blanchet, P., Chlordecone exposure and risk of prostate cancer. *Journal*  
524 *of clinical oncology : official journal of the American Society of Clinical Oncology* **2010**, *28*,  
525 (21), 3457-62.
- 526 16. Dallaire, R.; Muckle, G.; Rouget, F.; Kadhel, P.; Bataille, H.; Guldner, L.; Seurin, S.;  
527 Chajes, V.; Monfort, C.; Boucher, O.; Thome, J. P.; Jacobson, S. W.; Multigner, L.; Cordier, S.,

- 528 Cognitive, visual, and motor development of 7-month-old Guadeloupean infants exposed to  
529 chlordecone. *Environmental research* **2012**, *118*, 79-85.
- 530 17. Seurin, S.; Rouget, F.; Reninger, J. C.; Gillot, N.; Loynet, C.; Cordier, S.; Multigner, L.;  
531 Leblanc, J. C.; Volatier, J. L.; Heraud, F., Dietary exposure of 18-month-old Guadeloupean  
532 toddlers to chlordecone. *Regulatory toxicology and pharmacology : RTP* **2012**, *63*, (3), 471-9.
- 533 18. Boucher, O.; Simard, M. N.; Muckle, G.; Rouget, F.; Kadhel, P.; Bataille, H.; Chajes, V.;  
534 Dallaire, R.; Monfort, C.; Thome, J. P.; Multigner, L.; Cordier, S., Exposure to an  
535 organochlorine pesticide (chlordecone) and development of 18-month-old infants.  
536 *Neurotoxicology* **2013**, *35*, 162-8.
- 537 19. Kadhel, P.; Monfort, C.; Costet, N.; Rouget, F.; Thome, J. P.; Multigner, L.; Cordier, S.,  
538 Chlordecone exposure, length of gestation, and risk of preterm birth. *American journal of*  
539 *epidemiology* **2014**, *179*, (5), 536-44.
- 540 20. Saunders, L.; Kadhel, P.; Costet, N.; Rouget, F.; Monfort, C.; Thome, J. P.; Guldner, L.;  
541 Cordier, S.; Multigner, L., Hypertensive disorders of pregnancy and gestational diabetes mellitus  
542 among French Caribbean women chronically exposed to chlordecone. *Environment international*  
543 **2014**, *68*, 171-6.
- 544 21. Cordier, S.; Bouquet, E.; Warembourg, C.; Massart, C.; Rouget, F.; Kadhel, P.; Bataille,  
545 H.; Monfort, C.; Boucher, O.; Muckle, G.; Multigner, L., Perinatal exposure to chlordecone,  
546 thyroid hormone status and neurodevelopment in infants: the Timoun cohort study in  
547 Guadeloupe (French West Indies). *Environmental research* **2015**, *138*, 271-8.
- 548 22. Herve, D.; Costet, N.; Kadhel, P.; Rouget, F.; Monfort, C.; Thome, J. P.; Multigner, L.;  
549 Cordier, S., Prenatal exposure to chlordecone, gestational weight gain, and birth weight in a  
550 Guadeloupean birth cohort. *Environmental research* **2016**, *151*, 436-444.
- 551 23. Multigner, L.; Kadhel, P.; Rouget, F.; Blanchet, P.; Cordier, S., Chlordecone exposure  
552 and adverse effects in French West Indies populations. *Environmental science and pollution*  
553 *research international* **2016**, *23*, (1), 3-8.
- 554 24. Yang, Y. F.; Chen, P. J.; Liao, V. H., Nanoscale zerovalent iron (nZVI) at  
555 environmentally relevant concentrations induced multigenerational reproductive toxicity in  
556 *Caenorhabditis elegans*. *Chemosphere* **2016**, *150*, 615-23.
- 557 25. Deloumeaux, J.; Bhakkan, B.; Eyraud, R.; Braud, F.; Manip M'Ebobisse, N.; Blanchet,  
558 P.; Brureau, L., Prostate cancer clinical presentation, incidence, mortality and survival in  
559 Guadeloupe over the period 2008-2013 from a population-based cancer registry. *Cancer causes*  
560 *& control : CCC* **2017**, *28*, (11), 1265-1273.
- 561 26. Gely-Pernot, A.; Hao, C.; Legoff, L.; Multigner, L.; D'Cruz, S. C.; Kervarrec, C.; Jegou,  
562 B.; Tevosian, S.; Smagulova, F., Gestational exposure to chlordecone promotes transgenerational  
563 changes in the murine reproductive system of males. *Scientific reports* **2018**, *8*, (1), 10274.
- 564 27. Clostre, F.; Cattan, P.; Gaude, J. M.; Carles, C.; Letourmy, P.; Lesueur-Jannoyer, M.,  
565 Comparative fate of an organochlorine, chlordecone, and a related compound, chlordecone-5b-  
566 hydro, in soils and plants. *The Science of the total environment* **2015**, *532*, 292-300.
- 567 28. Clostre, F.; Letourmy, P.; Lesueur-Jannoyer, M., Soil thresholds and a decision tool to  
568 manage food safety of crops grown in chlordecone polluted soil in the French West Indies.  
569 *Environ Pollut* **2017**, *223*, 357-366.
- 570 29. Della Rossa, P.; Jannoyer, M.; Mottes, C.; Plet, J.; Bazizi, A.; Arnaud, L.; Jestin, A.;  
571 Woignier, T.; Gaude, J. M.; Cattan, P., Linking current river pollution to historical pesticide use:  
572 Insights for territorial management? *The Science of the total environment* **2017**, *574*, 1232-1242.



- 573 30. Unger, M. A.; Vadas, G. G., Kepone in the James River Estuary: Past, Current and Future  
574 Trends. *Virginia Institute of Marine Science, College of William and Mary*. **2017**, 1-15.
- 575 31. Cabidoche, Y. M.; Achard, R.; Cattani, P.; Clermont-Dauphin, C.; Massat, F.; Sansoulet,  
576 J., Long-term pollution by chlordecone of tropical volcanic soils in the French West Indies: a  
577 simple leaching model accounts for current residue. *Environ Pollut* **2009**, *157*, (5), 1697-705.
- 578 32. Fernández-Bayo, J. D.; Saison, C.; Voltz, M.; Disko, U.; Hofmann, D.; Berns, A. E.,  
579 Chlordecone fate and mineralisation in a tropical soil (andosol) microcosm under aerobic  
580 conditions. *The Science of the total environment* **2013**, *463-464*, 395-403.
- 581 33. Devault, D. A.; Laplanche, C.; Pascaline, H.; Bristeau, S.; Mouvet, C.; Macarie, H.,  
582 Natural transformation of chlordecone into 5b-hydrochlordecone in French West Indies soils:  
583 statistical evidence for investigating long-term persistence of organic pollutants. *Environmental  
584 science and pollution research international* **2016**, *23*, (1), 81-97.
- 585 34. Orndorff, S. A.; Colwell, R. R., Distribution and characterization of kepone-resistant  
586 bacteria in the aquatic environment. *Applied and environmental microbiology* **1980**, *39*, (3), 611-  
587 22.
- 588 35. George, S. E.; Claxton, L. D., Biotransformation of chlordecone by *Pseudomonas*  
589 species. *Xenobiotica; the fate of foreign compounds in biological systems* **1988**, *18*, (4), 407-16.
- 590 36. Chaussonnerie, S.; Saaidi, P. L.; Ugarte, E.; Barbance, A.; Fossey, A.; Barbe, V.;  
591 Gyapay, G.; Bruls, T.; Chevallier, M.; Couturat, L.; Fouteau, S.; Muselet, D.; Pateau, E.; Cohen,  
592 G. N.; Fonknechten, N.; Weissenbach, J.; Le Paslier, D., Microbial Degradation of a Recalcitrant  
593 Pesticide: Chlordecone. *Frontiers in microbiology* **2016**, *7*, (2025), 2025.
- 594 37. Chevallier, M. L.; Cooper, M.; Kummel, S.; Barbance, A.; Le Paslier, D.; Richnow, H.  
595 H.; Saaidi, P. L.; Adrian, L., Distinct Carbon Isotope Fractionation Signatures during Biotic and  
596 Abiotic Reductive Transformation of Chlordecone. *Environmental science & technology* **2018**,  
597 *52*, (6), 3615-3624.
- 598 38. Jablonski, P. E.; Pheasant, D. J.; Ferry, J. G., Conversion of Kepone by *Methanosarcina*  
599 *thermophila*. *FEMS microbiology letters* **1996**, *139*, (2-3), 169-173.
- 600 39. Schrauzer, G. N.; Katz, R. N., Reductive dechlorination and degradation of mirex and  
601 kepone with Vitamin B12. *Bioinorganic chemistry* **1978**, *9*, (2), 123-43.
- 602 40. Almaric, L.; Bristeau, S. *Essai d'intercomparaison de l'analyse de la chlordécone et de  
603 ses métabolites dans les sols*; BRGM/RP-63113-FR; BRGM: 2014; p 87.
- 604 41. Wilson, N. K.; Zehr, R. D., Structures of some Kepone photoproducts and related  
605 chlorinated pentacyclodecanes by carbon-13 and proton nuclear magnetic resonance. *The  
606 Journal of organic chemistry* **1979**, *44*, (8), 1278-1282.
- 607 42. Belghit, H.; Colas, C.; Bristeau, S.; Mouvet, C.; Maunit, B., Liquid chromatography-  
608 high-resolution mass spectrometry for identifying aqueous chlordecone hydrate dechlorinated  
609 transformation products formed by reaction with zero-valent iron. *International Journal of  
610 Environmental Analytical Chemistry* **2015**, *95*, (2), 93-105.
- 611 43. Ranguin, R.; Durimel, A.; Karioua, R.; Gaspard, S., Study of chlordecone desorption  
612 from activated carbons and subsequent dechlorination by reduced cobalamin. *Environmental  
613 science and pollution research international* **2017**, *24*, (33), 25488-25499.
- 614 44. Lewis, T. A.; Morra, M. J.; Brown, P. D., Comparative product analysis of carbon  
615 tetrachloride dehalogenation catalyzed by cobalt corrins in the presence of thiol or titanium (III)  
616 reducing agents. *Environmental science & technology* **1996**, *30*, (1), 292-300.
- 617 45. Rodríguez-Garrido, B.; Camps Arbostain, M.; Monterroso, M. C.; Macías, F., Reductive  
618 Dechlorination of  $\alpha$ -,  $\beta$ -,  $\delta$ -, and  $\gamma$ -Hexachlorocyclohexane Isomers by Hydroxocobalamin in the

- 619 Presence of Either Dithiothreitol or Titanium(III) Citrate as Reducing Agents. *Environmental*  
620 *science & technology* **2004**, *38*, (19), 5046-5052.
- 621 46. Holmstead, R. L., Studies of the degradation of Mirex with an iron(II) porphyrin model  
622 system. *Journal of agricultural and food chemistry* **1976**, *24*, (3), 620-4.
- 623 47. Mouvet, C.; Dictor, M. C.; Bristeau, S.; Breeze, D.; Mercier, A., Remediation by  
624 chemical reduction in laboratory mesocosms of three chlordecone-contaminated tropical soils.  
625 *Environmental science and pollution research international* **2017**, *24*, (33), 25500-25512.
- 626 48. Andraos, J.; Kresge, A. J.; Popik, V. V., Kinetics and Mechanism of the Isomerization of  
627 1H-Indene-1-carboxylic Acid to 1H-Indene-3-carboxylic Acid in Aqueous Solution and  
628 Determination of Their Keto-Enol Equilibrium Constants and Acid Dissociation Constants of the  
629 Keto and Enol Forms. Implication for the Photolysis of Diazonaphthoquinones. *Journal of the*  
630 *American Chemical Society* **1994**, *116*, (3), 961-967.
- 631 49. Robert, S. *Historique de la contamination des sédiments littoraux des Antilles françaises*  
632 *par la chlordécone (ChloSed). Rapport final de convention MAAP-Ifremer.*; Ifremer:  
633 L'Houmeau, 2012; p 92.
- 634 50. Brunet, D.; Woignier, T.; Lesueur-Jannoyer, M.; Achard, R.; Rangon, L.; Barthes, B. G.,  
635 Determination of soil content in chlordecone (organochlorine pesticide) using near infrared  
636 reflectance spectroscopy (NIRS). *Environ Pollut* **2009**, *157*, (11), 3120-5.
- 637 51. Bristeau, S.; Amalric, L.; Mouvet, C., Validation of chlordecone analysis for native and  
638 remediated French West Indies soils with high organic matter content. *Analytical and*  
639 *bioanalytical chemistry* **2014**, *406*, (4), 1073-80.

640

641