

Surfing on protein waves: modeling the bacterial genome partitioning

Jean-Charles Walter

Laboratoire Charles Coulomb,
CNRS & Université de Montpellier, France

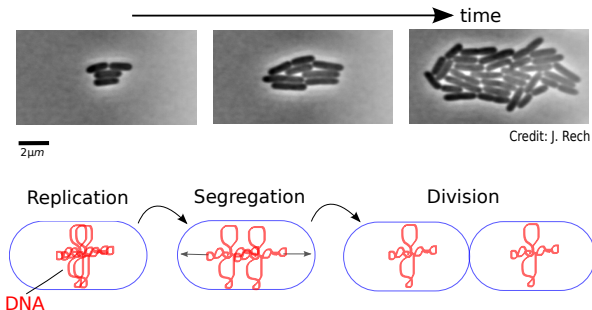
Modeling phase separation in health and disease: from nano- to meso-scale

Toulouse, France

Sept. 30 - Oct. 2 2019

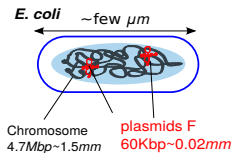
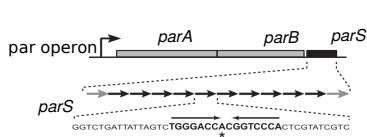


Segregation of bacterial DNA



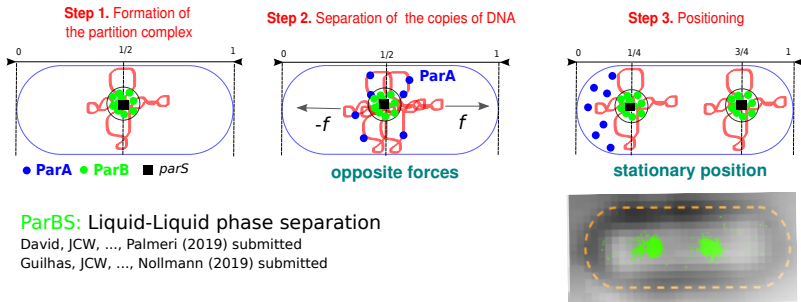
How is the bacterial genome segregated ?

The ParABS operon



- ParA: “motor” protein (ATPase, Walker-type)
- ParB: binding protein (specific or non-specific binding)
- *parS*: centromere-like DNA sequence

The ParABS segregation system: molecular actors



ParBS: Liquid-Liquid phase separation

David, JCW, ..., Palmeri (2019) submitted

Guilhas, JCW, ..., Nollmann (2019) submitted

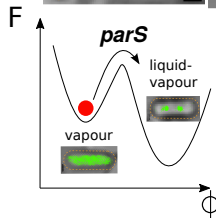
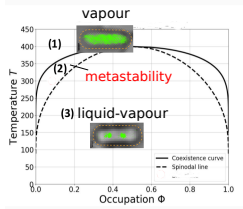
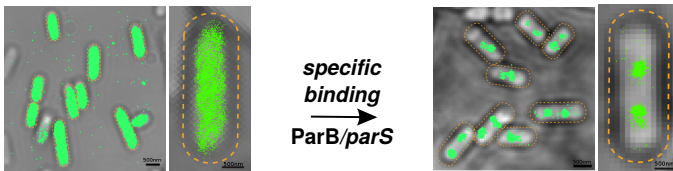
3 components: 2 proteins (ParA & ParB) + specific binding sites (*parS*)

How to describe formation, segregation and positioning of macromolecular assembly in a fluid phase ?

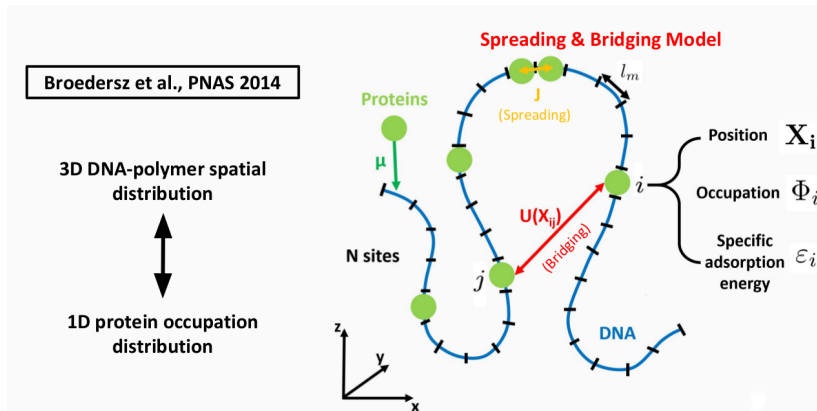
Liquid-Liquid Phase Separation

Super-Resolution microscopy (PALM)

D. Cattoni, B. Guilhas, A. Le Gall, M. Nollmann (CBS, Montpellier)



The Spreading and Bridging Model (S&B)



The Spreading and Bridging Model (S&B)

Short Range Lattice Gas
(Spreading)

$$H_{\text{SRLG}}[\Phi_i] = -J \sum_{i=1}^{N-1} \Phi_{i+1} \Phi_i - \sum_{i=1}^N (\mu - \varepsilon_i) \Phi_i$$

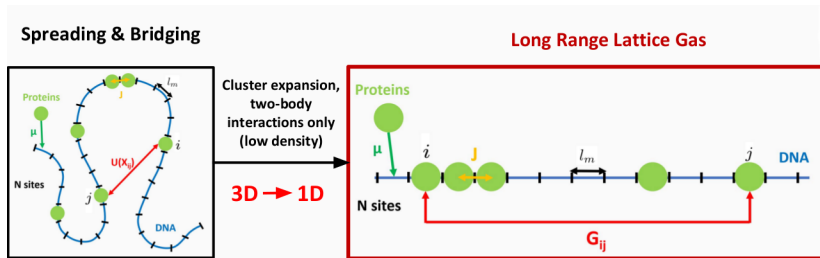
$$H[\Phi_i, \mathbf{X}_i] = H_{\text{P}}[\mathbf{X}_i] + H_{\text{SRLG}}[\Phi_i] + H_{\text{B}}[\Phi_i, \mathbf{X}_i]$$

3D Polymer

Coupling between
polymer and lattice gas
(Bridging)

$$H_{\text{B}}[\Phi_i, \mathbf{X}_i] = \frac{1}{2} \sum_{i,j}^N \Phi_i U(X_{ij}) \Phi_j$$

Mapping the S&B onto a Long Range Lattice Gas



$$G_{ij} = 4\pi\beta^{-1} \int_0^{+\infty} dR R^2 \left[e^{-\beta U(R)} - 1 \right] P_{ij}(R) \rightarrow H_{LRLG} = H_{SRLG} - \frac{1}{2} \sum_{i,j} \phi_i G_{ij} \phi_j$$

Existence of a phase transition

Asymptotic behavior

$$G_{ij} \xrightarrow{|i-j| \rightarrow +\infty} K_{\text{SW}} |i-j|^{-\alpha}$$

$$\alpha = (3 + g)\nu$$

Enhancement exponent
of the polymer partition
function

$$\mathcal{Z}_P \sim \bar{\mu}^N N^{\nu g}$$

Polymer size
exponent

$$R_{ij} \sim |i-j|^\nu$$

Phase transition only if $1 < \alpha < 2$

Freeman J. Dyson, 1969



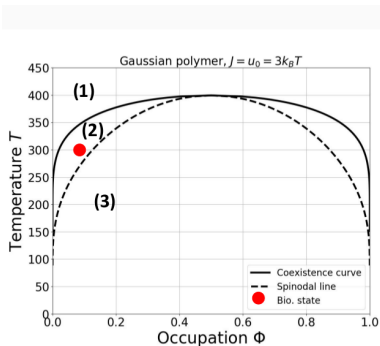
Gaussian Polymer:

$$\alpha_{\text{GP}} = 1.5$$

Self-Avoiding Polymer:

$$\alpha_{\text{SAP}} \approx 1.92$$

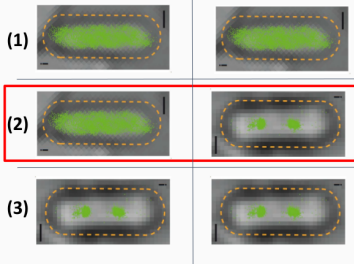
ParBS complexes are in the metastable region



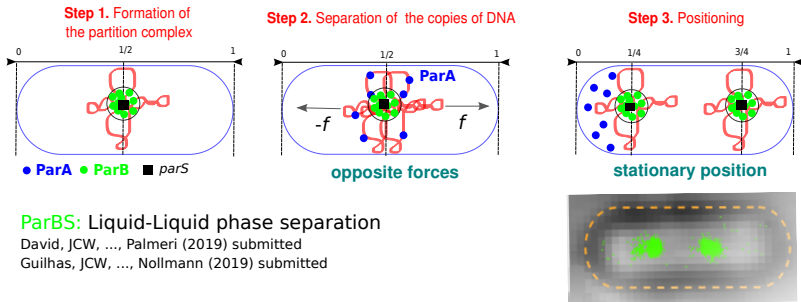
Expected ParB distribution...

...without *parS*

...with *parS*



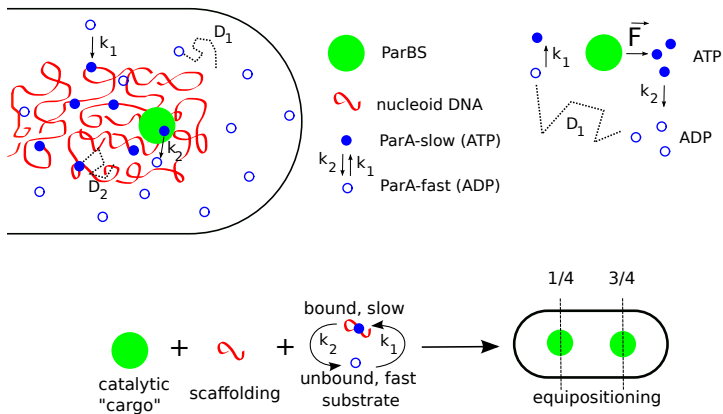
The ParABS segregation system: molecular actors



3 components: 2 proteins (ParA & ParB) + specific binding sites (*parS*)

How to describe both segregation and positioning of macromolecular assembly in a fluid phase ?

Molecular interactions and diffusion



Reaction-Diffusion equations (ParA) coupled to Brownian motion (ParBS)

$$\text{ParA-slow (ATP): } \frac{\partial \mathbf{v}}{\partial t} = D_2 \Delta \mathbf{v} + k_1 \mathbf{u}(\mathbf{r}, t) - k_2 \mathbf{v}(\mathbf{r}, t) \sum_i \mathbf{S}(\mathbf{r} - \mathbf{r}_i(t))$$

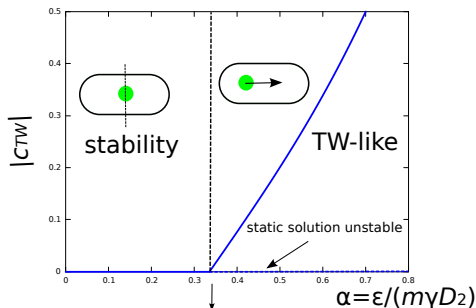
$$\text{ParA-fast (ADP): } \frac{\partial \mathbf{u}}{\partial t} = D_1 \Delta \mathbf{u} - k_1 \mathbf{u}(\mathbf{r}, t) + k_2 \mathbf{v}(\mathbf{r}, t) \sum_i \mathbf{S}(\mathbf{r} - \mathbf{r}_i(t))$$

$$\text{ParBS: } m\gamma \frac{d\mathbf{r}_i}{dt}(t) = \varepsilon \int_V \nabla \mathbf{v}(\mathbf{r}', t) \mathbf{S}(\mathbf{r}' - \mathbf{r}_i(t)) d^3\mathbf{r}'$$

- **Feedback** between the partition complexes and ParA densities
→ Non-linear system with **dynamical instability**

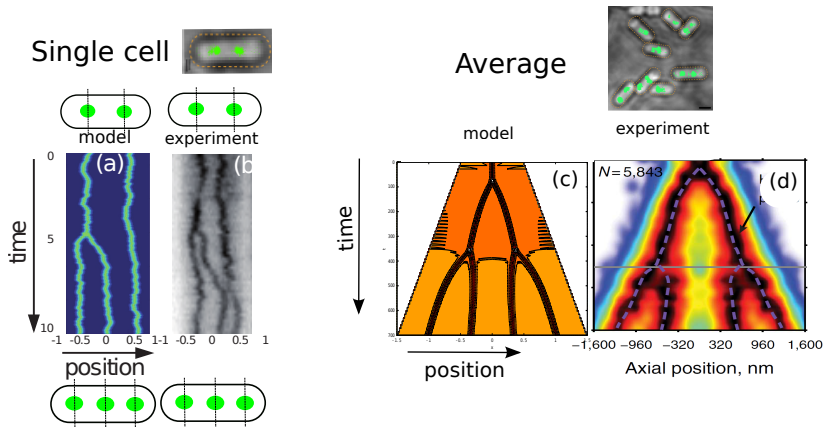
Dynamical instability: supercritical pitchfork bifurcation

Threshold of dynamical stability obtained with Traveling Waves (TW)
ansatz: $u(x, t) = u(\xi)$; $v(x, t) = v(\xi)$, where $\xi = x - c_{TW} t$



$$\alpha_c = N_{ParA \in C}^{-1}$$

Comparison with experiments



Summary

- **Complexes are formed by LLPS mechanisms in the metastable regime:**
→ **bound particles are interacting at long range due to polymer fluctuations**
David G., JCW, Broœdersz C., Dornigac J., Geniet F., Parmeggiani A., Walliser N. & Palmeri J. *Long range interactions generated by polymer fluctuations induce phase separation*, submitted, [arXiv/1811.09234]
Guilhas B., JCW, Rech J., Mathieu-Demaziere C., Palmeri J., Parmeggiani A., Walliser N., Bouet J.-Y., Le Gall A. & Nollmann M. *ATP-driven separation of liquid phase condensates in bacteria*, submitted.
- **ATP-driven segregation of equilibrium complexes via ParA**
→ **Reaction-diffusion mechanism with a dynamical transition**
JCW, Dornigac J., Lorman V., Rech J., Bouet J.-Y., Nollmann M., Palmeri J., Parmeggiani A. & Geniet F., *Surfing on protein waves: proteophoresis as a mechanism for bacterial genome partitioning*, *Phys. Rev. Lett.* **119**, 028101. arXiv:1702.07372 [q-bio.SC]

Theory



C. Chevalier

G. David

J. Dorignac

F. Geniet

V. Lorman

J. Palmeri

A. Parmeggiani

P. Soudon

N. Walliser



Molecular biology

R. Diaz

A. Sanchez

J. Rech

J-Y. Bouet



C. Broedersz

SR microscopy



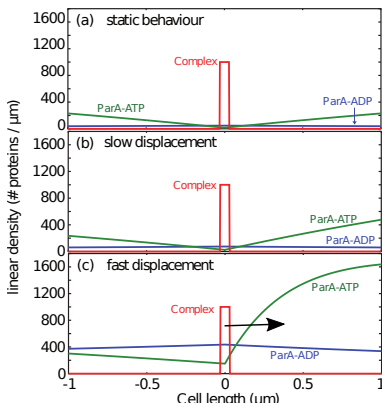
D. Cattoni

B. Guilhas

A. Le Gall

M. Nollmann

Density profiles obtained with biological parameters

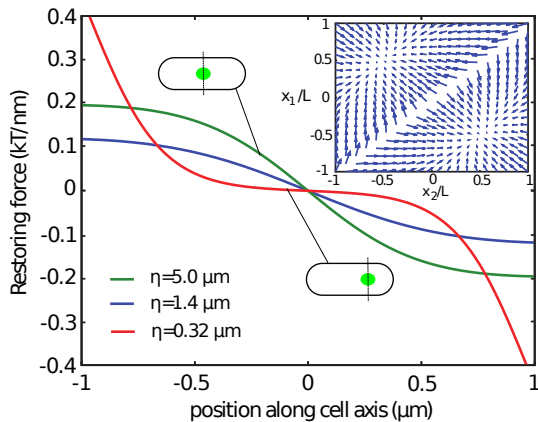


$$\alpha < \alpha_c$$

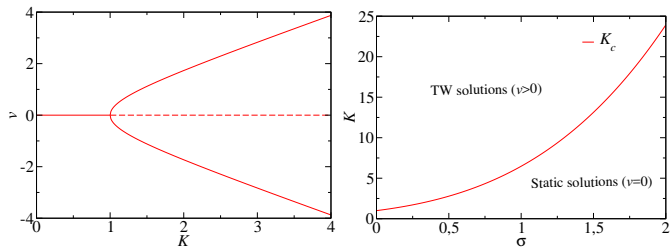
$$\alpha = \alpha_c$$

$$\alpha > \alpha_c$$

Screening length



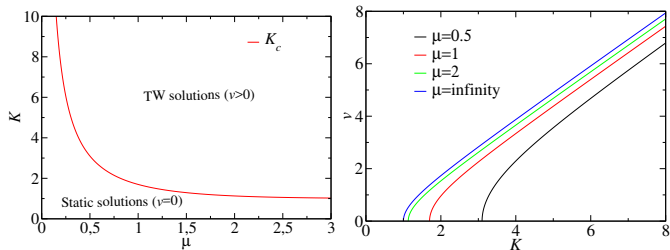
Supercritical pitchfork bifurcation



Infinite system (left) Supercritical pitchfork bifurcation diagram of reduced system in the (K, v) space.

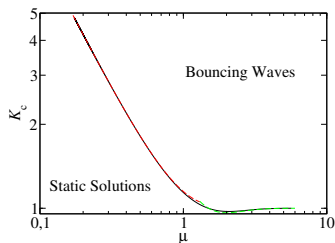
(right) Dynamical phase diagram in the plane (K, σ) where $K = \alpha m_0 / (4D\ell)$ and σ is the dimensionless width of a gaussian source. The red curve represents the boundary (critical value K_c vs. σ).

Supercritical pitchfork bifurcation



Periodic Boundary Conditions (left) Dynamical phase diagram in the plane (K, μ) where $K = \alpha m_0 / (4D\ell)$ and $\mu = L/\ell$ is the dimensionless ratio between L (size domain $2L$) and the screening length $\ell = \sqrt{D/k}$. (right) TW dimensionless velocity v (positive) vs. parameter $K = \alpha m_0 / (4D\ell)$ for different values of $\mu = L/\ell$ from 0.5 to 2 and for $\mu \rightarrow \infty$. The blue curve is the same as the upper part for infinite system, thus the right limit is recovered.

Supercritical pitchfork bifurcation



No-Flux Boundary Conditions (Log-log plot of the instability threshold $K_c(\mu)$ versus the system size to screening length ratio $\mu = L/\ell$ for a Dirac source.