



**HAL**  
open science

## Electro-elastic coupling modeling from multiple-wavelengths imaging microscopy

Cécile Flammier, Yasmine Fedala, Frédéric Kanoufi, Gilles Tessier, Jean  
Roger, Fabien Amiot

► **To cite this version:**

Cécile Flammier, Yasmine Fedala, Frédéric Kanoufi, Gilles Tessier, Jean Roger, et al.. Electro-elastic coupling modeling from multiple-wavelengths imaging microscopy. 14th International Conference on Experimental Mechanics (ICEM 14), Jul 2010, Poitiers, France. 10.1051/epjconf/20100637001 . hal-02300578

**HAL Id: hal-02300578**

**<https://hal.science/hal-02300578>**

Submitted on 29 Sep 2019

**HAL** is a multi-disciplinary open access archive for the deposit and dissemination of scientific research documents, whether they are published or not. The documents may come from teaching and research institutions in France or abroad, or from public or private research centers.

L'archive ouverte pluridisciplinaire **HAL**, est destinée au dépôt et à la diffusion de documents scientifiques de niveau recherche, publiés ou non, émanant des établissements d'enseignement et de recherche français ou étrangers, des laboratoires publics ou privés.

# Electro-elastic coupling modelling from multiple wavelengths imaging microscopy

C. Flammier<sup>1,a</sup>, Y. Fedala<sup>2,3</sup>, F. Kanoufi<sup>3</sup>, G. Tessier<sup>2</sup>, J.P. Roger<sup>2</sup>, F. Amiot<sup>1</sup>

<sup>1</sup>Institut FEMTO-ST, CNRS-UMR 6174 / UFC / ENSMM / UTBM, 24 chemin de l'Épitaphe, F-25030 Besançon, France

<sup>2</sup>Institut Langevin / ESPCI ParisTech / CNRS UMR 7587, Laboratoire d'Optique Physique, 10 rue Vauquelin, F-75231 Paris Cedex 05, France

<sup>3</sup>PECSA, CNRS-UMR 7195 / ESPCI ParisTech, 10 rue Vauquelin, F-75231 Paris Cedex 05, France

**Abstract.** Due to their ability to interact with their environment, the interest in micro-cantilever sensors in biological or chemical applications is increasing. Moreover measurement of the sensor bending induced by molecular adsorption is improved by electrochemical actuation of the cantilever. This is why modelling the electro-elastic coupling is a key issue. Different methods are used to measure the bending induced by this electrochemical actuation. Among them, multiple wavelengths imaging microscopy provides full-field measurements. The local surface electrical charge density and the deformation field are obtained by decoupling wavelength-dependent and -independent contributions to the collected intensity. Based on a modelling of the electro-elastic coupling and on these full-field measurements, an identification method of the coupling parameters of the system is proposed herein.

## 1 Introduction

Molecule recognition in biology is widely performed with fluorescent or radioactive tags due to the low detection level they provide [1]. However their preparation and the interest molecules modification require costly and time consuming procedures [2]. An alternative way is to use micro-cantilever sensors. Indeed, objects miniaturization highly increases their surface over volume ratio and thus their ability to interact with their environment, therefore they present advantages for molecule detection. In fact, two detection modes are used, the dynamic and the static modes [3].

In dynamic mode operation, the resonance frequency of the micro-cantilever is monitored and allows for mass variation detection induced by molecular adsorption [4-5]. Nevertheless, dynamic measurements are not suited for operations in aqueous solution due to increased damping [3]. An alternative solution is proposed by [6].

Adsorption and environmental modifications also induce quasi-static bending of the micro cantilever. The optical lever technique allows to read the out of plane displacement at the cantilever tip. This is used to detect DNA molecules by hybridization [7]. However the displacement induced by adsorption is very low and difficult to measure.

---

<sup>a</sup> e-mail : cecile.flammier@femto-st.fr

Using the micro-cantilever as a sensor and as an electrode in electrochemical environment provides an additional mechanism to probe the surface chemical composition. Furthermore its surface is under control of the electrode potential [8]. A lot of previous studies focus on redox reactions between electrolyte and solid electrode [9], but [10-11] report ways to identify adsorbed molecules without involvement of electrochemical reactions. However the exact mechanisms underlying the electro-elastic coupling when a molecule is adsorbed are described qualitatively and not quantitatively [10, 12]. Multiple wavelengths imaging microscopy provide both the local surface electrical charge density and the deformation field by decoupling wavelength-dependent and – independent (*ie* kinematic) contributions to the collected intensity [13].

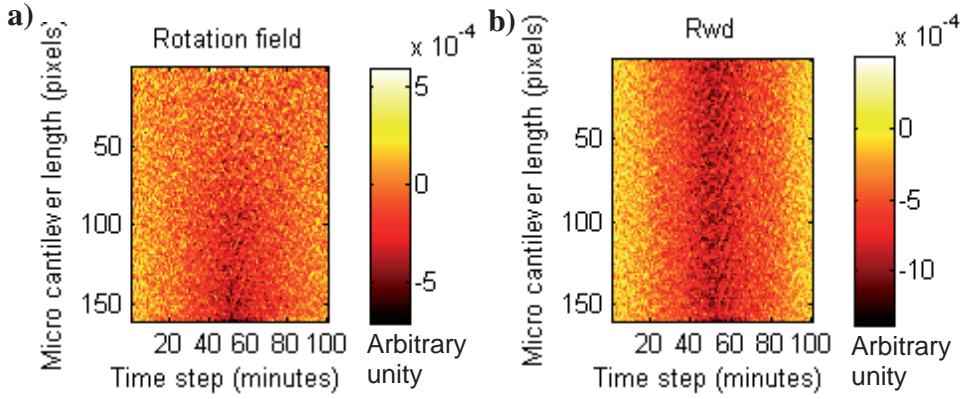
The electro-elastic coupling model chosen herein describes the chemical part of the system free energy by a thin virtual layer ascribed to deform with the cantilever [14]. Equilibrium and kinematic compatibility conditions at the interface allow us to write equations driving the mechanical behaviour of the system. Enforcing the measured fields to satisfy these equations provides a linear system whose unknowns are the mechanical parameters describing the electro-elastic coupling.

The inverse problem is solved here by identifying equivalent mechanical parameters induced by the molecule adsorption onto the micro-cantilever and the stress field applied on its surface.

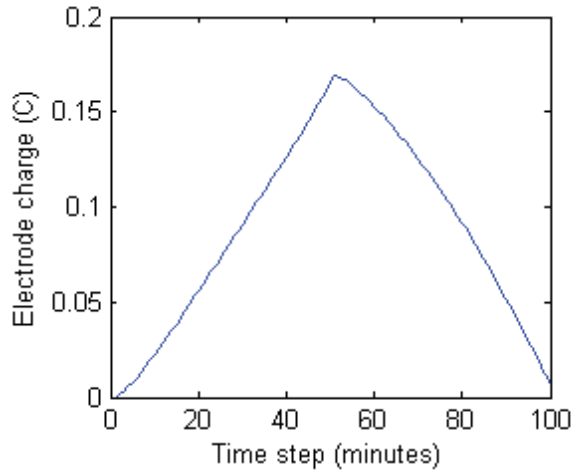
In this paper the experimental procedure is presented in a first part. Next a mechanical modelling and the inverse problem resolution are described. Finally, results are reported followed by a discussion.

## 2 Full-field measurements

Micro-cantilevers (70  $\mu\text{m}$  length, 20  $\mu\text{m}$  wide and 0.84  $\mu\text{m}$  thickness) that are made of 770 nm thick silica obtained by thermal oxidation of a silicon wafer and covered with a of 20 nm thick titanium layer and a 50 nm thick gold one are used. The gold layer is used as a working electrode in an electrochemical cell which also contains a platinum wire counter electrode and an Ag/AgCl reference electrode. Its potential is varied using a potentiostat. The induced chemical and mechanical effects are observed using a multiple wavelengths imaging microscopy [13]. Owing to their different wavelengths dependence, mechanical and chemical effects can be decoupled so that one obtains two fields: a rotation field  $r(x)$  (**Fig. 1. a**) describing the surface deformation and a wavelength-dependent contribution  $R_{wd}(x)$  (**Fig. 1. b**) which is assumed to linearly depend on the electrochemical surface charge. These fields depend on the cantilever length and width, and on the electrical charge (**Fig. 2**). The electrical charge is obtained by integrating the current passing through the electrode which area is 0.5  $\text{cm}^2$ . Fields are averaged across the surface width in order to study the cantilever as a one dimensional system.



**Fig. 1.** Rotation field  $r(x)$  (a) and wavelength-dependent contribution  $R_{wd}(x)$  (b) obtained by multiple wavelengths imaging microscopy.



**Fig. 2.** Electrochemical charge applied on the cantilever as a function of the time.

### 3 Identification procedure

#### 3.1 Mechanical modelling

Assuming the cantilever under scrutiny is an Euler-Bernoulli beam,  $r(x) = \frac{dw}{dx}$  where  $w(x)$  is the out of plane displacement field of the cantilever. The mechanical effect induced by the chemical composition change is described by a thin (virtual) layer (**Fig. 3.**) which is ascribed to deform together with the underlying beam. Denoting  $e_l$  the virtual layer thickness,  $\frac{e_l}{e_c}$  is assumed to be very small. In addition, this layer is supposed to withstand no flexural moment [14] and to be subjected to a free strain field  $\varepsilon_L(x) = F.R_{wd}(x)$  where  $F$  is a real constant to be determined.

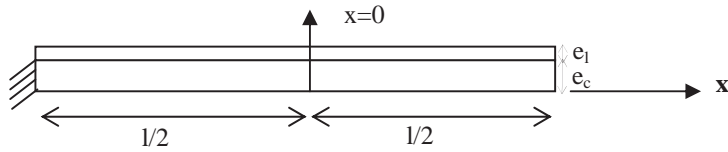


Fig. 3. Modelling of the layer on the cantilever.

$l, e_c$ , are the length and the thickness of the micro-cantilever, respectively.

The interfacial shear stress field is expanded onto a Legendre polynomial basis [14]:

$$\tau(x) = \sum_{k=0}^K \tau_k P_k\left(\frac{2x}{l}\right) \tag{1}$$

As there is no more load applied on the cantilever, the system is supposed to be at equilibrium, thus

$$\int_{-l/2}^{l/2} \tau(\eta) d\eta = l \tau_0 = 0 \tag{2}$$

The equilibrium and the kinematic compatibility conditions at the interface read [17]:

$$\frac{dN_l}{dx} = b \tau(x) \quad \text{and} \quad u_l(x) - u_l\left(-\frac{l}{2}\right) = u_c(x) - u_c\left(-\frac{l}{2}\right) \tag{3}$$

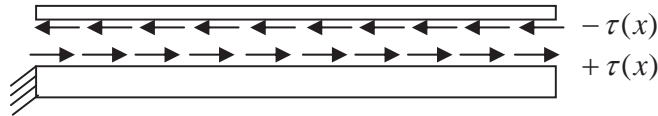


Fig. 4. Modelling of the interfacial stresses.

For a given charge, they enforce the measured fields to satisfy:

$$-\frac{e_c}{2} \int_{-l/2}^x \frac{d^2 w(\eta)}{d\eta^2} d\eta = F \int_{-l/2}^x R_{wd}(\eta) d\eta + E_c I_c \left( \frac{1}{e_c E_c} + \frac{1}{e_l E_l} \right) \sum_{k=1}^K \tau_k \int_{-l/2}^x \int_{-l/2}^{\eta} P_k\left(\frac{2\xi}{l}\right) d\xi d\eta \tag{4}$$

with

$$\tau_k = (2k + 1) \frac{1}{b e_c} \int_{-l/2}^{l/2} P_k\left(\frac{2\eta}{l}\right) \frac{d^3 w(\eta)}{d\eta^3} d\eta \tag{5}$$

where  $E_c, I_c, b$  and  $E_l$  are the Young's modulus, the moment of inertia of the cantilever, the width of the cantilever's cross section and the Young's modulus of the virtual layer, respectively.

The product  $e_l E_l$ , assumed equivalent to the mechanical spring constant of the virtual layer, and the coefficient  $F$  are to be identified from solving these equations.

### 3.2 Inverse problem

In order to eliminate a part of the noise in the measured rotation field, it is expanded onto a Legendre polynomials basis:

$$r(x) = \sum_{k=0}^K r_k P_k\left(\frac{2x}{l}\right) \quad (6)$$

with the  $r_k$  coefficients which are constants.

On one hand, the number of Legendre polynomial ( $K+1$ ) has to be small enough to minimize noise. On the other hand, it has to be large enough to correctly describe the experimental data, this is why a compromise between data and noise has to be found. Singular values decomposition of the projection operator shows that the maximum number is  $K=80$  here. In the sequel, it is chosen that the number of Legendre polynomials should not exceed 20.

Moreover this projection will be used for the calculation of  $\frac{d^3 w}{d\eta^3}$  by differentiating twice the Legendre polynomial basis.

$$\frac{d^3 w}{d\eta^3} = \sum_{k=0}^K r_k \frac{d^2}{dx^2} P_k\left(\frac{2x}{l}\right) \quad (7)$$

The product  $e_l E_l$  is assumed to be a constant, ie it doesn't depend neither on  $x$  coordinate nor on charge. The coefficient  $F$  is assumed to be constant along  $x$  but to depend on the charge. The equation (4) is solved simultaneously for each pixel of coordinate  $x$  on the cantilever and for each charge. The equation (4) is recast as:

$$M.X = B \quad (8)$$

With

$$M = \begin{bmatrix} m_1 & 0 & 0 & sum_1 \\ 0 & m_2 & 0 & : \\ 0 & : & : & : \\ 0 & : & : & : \\ 0 & : & : & : \\ 0 & 0 & : & : \\ 0 & 0 & m_{ff} & sum_{ff} \end{bmatrix} \quad (9)$$

$$\text{with } m_t = \begin{bmatrix} \int_{-l/2}^{l/2} R_{wd}(\eta) d\eta \\ \vdots \\ \int_{-l/2}^x R_{wd}(\eta) d\eta \\ \vdots \\ \int_{-l/2}^{-l/2} R_{wd}(\eta) d\eta \end{bmatrix} \quad \text{and} \quad \text{sum}_t = \begin{bmatrix} \sum_{k=1}^K \tau_k \int_{-l/2}^{l/2} \int_{-l/2}^{\eta} P_k\left(\frac{2\xi}{l}\right) d\xi d\eta \\ \vdots \\ \sum_{k=1}^K \tau_k \int_{-l/2}^x \int_{-l/2}^{\eta} P_k\left(\frac{2\xi}{l}\right) d\xi d\eta \\ \vdots \\ \sum_{k=1}^K \tau_k \int_{-l/2}^{-l/2} \int_{-l/2}^{\eta} P_k\left(\frac{2\xi}{l}\right) d\xi d\eta \end{bmatrix} \quad (10)$$

And

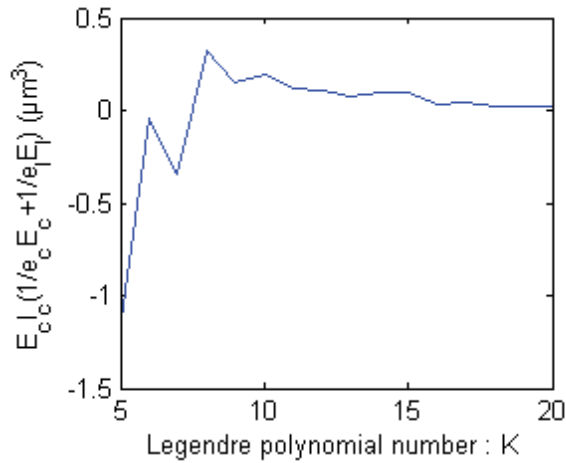
$$X = \begin{bmatrix} F_1 \\ \vdots \\ F_t \\ \vdots \\ Ft_f \\ E_c I_c \left( \frac{1}{e_c E_c} + \frac{1}{e_l E_l} \right) \end{bmatrix} \quad \text{and} \quad B = \begin{bmatrix} b_1 \\ \vdots \\ b_t \\ \vdots \\ b_{t_f} \end{bmatrix} \quad \text{with } b_t = -\frac{e_c}{2} \cdot \begin{bmatrix} \int_{-l/2}^{l/2} \frac{d^2 w(\eta)}{d\eta^2} d\eta \\ \vdots \\ \int_{-l/2}^x \frac{d^2 w(\eta)}{d\eta^2} d\eta \\ \vdots \\ \int_{-l/2}^{-l/2} \frac{d^2 w(\eta)}{d\eta^2} d\eta \end{bmatrix} \quad (11)$$

Let us denote  $p_f$  the pixel number along the cantilever and  $t_f$  the number of time step. As  $p_f=160$  and  $t_f=100$ , the system has 16000 equations for 101 unknowns. Thus the system is overdetermined and is solved in a least-square sense.

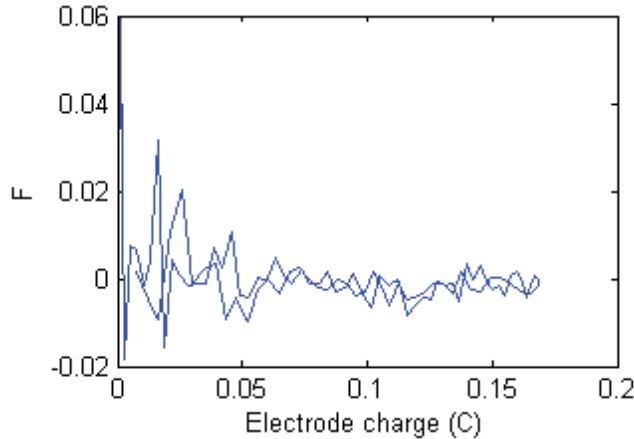
### 4 Results and discussions

Equation (7) is solved in a least-square sense for  $K$  varying from 5 to 20 and provides

$$E_c I_c \left( \frac{1}{e_c E_c} + \frac{1}{e_l E_l} \right) \text{ and coefficient } F.$$



**Fig. 5.** Identified  $E_c I_c \left( \frac{1}{e_c E_c} + \frac{1}{e_l E_l} \right)$  as a function of  $K$ .



**Fig. 6.** Identified  $F$  (dimensionless) as a function of the electrode charge for  $K=10$ .

**Fig. 5.** shows identified  $E_c I_c \left( \frac{1}{e_c E_c} + \frac{1}{e_l E_l} \right)$  as a function of  $K$ . The product thickness-Young

modulus of the virtual layer ( $e_l E_l$ ) is found as a function of  $K$  with the Young modulus of the micro-cantilever and **Fig. 5**.

A smallest  $K$  gives a negative term, probably because we have not enough information, but for values of  $K$  around 10 results are consistent because they are positive.

**Fig. 6.** shows identified  $F$  as a function of the electrode for  $K=10$  that is low. However, as the order of magnitude of the dimension of the  $R_{wd}$  field is not controlled it is difficult to conclude about it.

## 5 Conclusions

The out of plane displacement field and a field assumed proportional to the free strain field are obtained by multiple wavelengths imaging microscopy. Mechanical effects induced by the chemical composition charge are described by a thin (virtual) layer which is ascribed to deform together with



the underlying beam. The equivalent mechanical parameters induced by the molecule adsorption onto the micro-cantilever (product  $e_l E_l$  and coefficient  $F$ ) are found by solving an overdetermined system.

Using an adequate number  $K$  of Legendre polynomial allows one to eliminate a part of the noise in the fields obtained by multiple wavelengths microscopy imaging. Assuming the stress applied along the micro-cantilever surface is homogeneous, the Stoney equation is often used to calculate it from measurements done with the optical lever technique [15-17]. However adsorption induced strain seems to deviate from the Stoney model [18-19]. This is supported by the fact that  $K$  is greater than 2, so that the beam's deflection cannot be modelled as a simple curvature.

The quality of the data should anyway be improved thereafter. Data obtained here are anyway qualitative, since the contact area between the gold electrodes and the electrolyte need to be controlled in order to get quantitative results. Therefore isolated gold cantilevers will be fabricated in clean room.

This project is supported by the French National Research Agency (ANR) in the frame of the research project named "µEcoliers".

## References

1. Z. Földes-Papp, U. Demel, G. P. Titz, *Journal of Immunological Methods*, **260**, (2002) 117-124.
2. D. H. Blohm, A. Guiseppi-Elie, *Current Opinion in Biotechnology* **12** (2001) 41-47.
3. K.M. Hansen, T. Thundat, *Methods* **37** (2005) 57-64.
4. T.P. Burg, S.R. Manalis, *Appl. Phys. Lett.* **83**, (2003) 13.
5. P. Bergese, E. Bontempi, M. Chiari, P. Colombi, F. Damin, L.E. Depero, G. Pirri, M. Zucca, *Applied Surface Science* **253** (2007) 4226-4231.
6. T.P. Burg, S.R. Manalis, *Appl. Phys. Lett.* **83** (2003) 13
7. J.Fritz, M.K. Baller, H.P. Lang, H. Rothuizen, P. Vettiger, E. Meyer, H.J. Güntherodt, Ch. Gerber, J.K. Gimzewski, *Science* **288** (2000) 316-318.
8. H. Ibach, C. E. Bach, M. Giesen, A. Grossmann, *Surface Sciences* **375** (1997) 107-119.
9. F. Quist, V. Tabard-Cossa, A. Badia, *J. Phys. Chem. B*, **107** (2003), 10691-10695.
10. D. Lee, T. Thundat, S. Jeon, *Sensors and Actuators B* **124** (2007) 143-146.
11. F. Amiot, F. Hild, F. Kanoufi, J.P. Roger, *J. Phys. D: Appl. Phys.* **40** (2007) 3314-3325.
12. F. Amiot, F. Kanoufi, F. Hild, J.P. Roger, *Sensors and Actuators A* **152** (2009) 88-95
13. N. Garraud, F. Amiot, F. Hild, J.P. Roger, G. Tessier, 2008 SEM XI International Conference and Exposition on Experimental and Applied Mechanics, Orlando.
14. F. Amiot, *JoMMS* (2) **9** (2007) 1787-1803.
15. L.Y. Beaulieu, M. Godin, O. Laroche, V. Tabard-Cossa, P. Grütter, *Ultramicroscopy* **107** (2007) 422-430.
16. Y. Huang, H. Liu, K. Li, Y. Chen, Q. Zhang, X. Wu, *Sensors and Actuators A* **148** (2008) 329-334.
17. V. Tabard-Cossa, M. Godin L.Y. Beaulieu, P. Grütter, *Sensors and Actuators B* **107** (2005) 233-241.
18. S. Jeon, T. Thundat, *Appl. Phys. Lett.* **85** (2004) 6.
19. J. Mertens, M. Alvarez, J. Tamayo, *Appl. Phys. Lett.* **87** (2005) 234102.