



Looking at the complex relationships between migration behavior and conditional strategy based on energy metabolism in the European glass eel (*Anguilla anguilla*)

Hengtong Liu, Jacques Labonne, Pascale Coste-Heinrich, Emmanuel Huchet, Elisabeth Plagnes-Juan, Jacques Rives, Vincent Veron, Iban Seiliez, Valérie Bolliet

► To cite this version:

Hengtong Liu, Jacques Labonne, Pascale Coste-Heinrich, Emmanuel Huchet, Elisabeth Plagnes-Juan, et al.. Looking at the complex relationships between migration behavior and conditional strategy based on energy metabolism in the European glass eel (*Anguilla anguilla*). *Science of the Total Environment*, 2019, 696, 10.1016/j.scitotenv.2019.134039 . hal-02299643

HAL Id: hal-02299643

<https://hal.science/hal-02299643>

Submitted on 20 Dec 2021

HAL is a multi-disciplinary open access archive for the deposit and dissemination of scientific research documents, whether they are published or not. The documents may come from teaching and research institutions in France or abroad, or from public or private research centers.

L'archive ouverte pluridisciplinaire **HAL**, est destinée au dépôt et à la diffusion de documents scientifiques de niveau recherche, publiés ou non, émanant des établissements d'enseignement et de recherche français ou étrangers, des laboratoires publics ou privés.



Distributed under a Creative Commons Attribution - NonCommercial 4.0 International License

**Looking at the complex relationships between migration behavior and
conditional strategy based on energy metabolism in the European glass eel,
(*Anguilla anguilla*)**

Hengtong Liu^{1,3}, Jacques Labonne^{1,3}, Pascale Coste^{1,3}, Emmanuel Huchet^{1,3}, Elisabeth Plagnes-
Juan^{2,3}, Jacques Rives^{1,3}, Vincent Veron^{2,3}, Iban Seiliez^{2,3,†} and Valérie Bolliet^{1,3,†,*}

¹ INRA, UMR 1224 Ecobiop, Aquapôle, F-64310 Saint Pée sur Nivelle, France.

² INRA, UMR 1419 Nutrition Metabolisme Aquaculture, F-64310 Saint Pée sur Nivelle,
France.

³ Univ Pau & Pays Adour, Collège STEE Côte Basque, E2S, MIRA, Anglet, France

Number of figures: 7; Number of table: 1

[†]These authors contributed equally to this work

* Corresponding author:

valerie.bolliet@inra.fr

UMR 1224 Ecobiop, Aquapôle, 64310 Saint Pée sur Nivelle,
France. Tel.: +33 5 59 51 59 78

1. Introduction

The life cycle of the European eels has been described as a catadromous life history during which they migrate between oceanic spawning areas and continental rearing habitats (Tesch, 2003). The leptocephalus larvae drift with the Gulf Stream to join the continental shelf where they metamorphose and are then referred to as glass eels. Then, glass eels migrate up estuaries to join rivers using selective flood transport: during flood tide, glass eels move up in the water column and migrate with the current while they go down and remain on or in the substratum during ebb tide (Forward and Tankersley, 2001; Gascuel, 1986; Jellyman, 1979). However, a high degree of geographical dispersion crossing marine and riverine water have been documented regarding to different migratory patterns of settlement and river colonization (Daverat et al., 2006; Secor et al., 1995; Tsukamoto and Arai, 2001; Tsukamoto et al., 1998; Tzeng, 1996). These different patterns of migration could have a strong impact on the fate of the population because of the sex determinism in eels, which is environmental (Geffroy and Bardonnnet, 2016; Krueger and Oliviera, 1999). Briefly, in European eels, males are generally observed to dominate in high-density environments, often associated with estuarine or lower river reaches, whereas females tend to become increasingly dominant with increasing distance from the sea (Adam et al., 2008; Davey and Jellyman, 2005; Harrison et al., 2014; Laffaille et al., 2006; Parsons et al., 1977).

The underlying mechanisms of this facultative migration are far from being elucidated but some studies proposed a conditional strategy based on individual's energetic status in the European eels (Bureau du Colombier et al., 2007; Edeline, 2007; Edeline et al., 2006). Indeed, most glass eels do not feed during migration (Bardonnnet and Riera, 2005) and energy reserves accumulated by the leptocephalus larvae during oceanic migration are used to sustain activity and reach fresh water (Kawakami et al., 1999; Tesch, 2003). According to the conditional strategy, glass eels presenting

high wet weight (Edeline, 2007; Edeline et al., 2006) or high dry weight (Bureau du Colombier et al., 2007) should have a higher propensity to migrate than those showing low energy stores. However, some results appear to contradict the conditional strategy hypothesis, either in experimental conditions (Bolliet et al., 2017a) or in natural environments (Gaillard et al., 2015). The European eel is listed in the IUCN red list as ‘critically endangered’ and while the reasons for this tremendous decline of the eel population are still not fully understood, anthropogenic causes are often pointed out. In glass eels, global changes (pollution, increase in water temperature) may lead to an increase in energy expenditure because of a higher metabolism or detoxication processes. The role of the energetic status of glass eels on their ability to migrate has to be elucidated, particularly in a context where managers do not account for variation in energetic condition in their population exploitation and conservation policy.

It is noteworthy that in most of the experiments supporting the conditional strategy, the energetic status of individual was mainly evaluated using integrative proxies like body mass and size. However, in fasting and migrating fish, energetic budgeting is a dynamic process mediated not only by energy reserves but also associated with a highly interplaying network of energy metabolisms. For example, we recently reported the existence of a non-random fluctuating expression dynamics of autophagy- and lysosome-related genes during long term fasting in *A. anguilla* glass eel and demonstrated a significant contribution of these transcripts production over time to weight loss (Bolliet et al., 2017b). Besides its function in the removal of altered or dysfunctional proteins and organelles, autophagy plays also a critical role in energy supply by allowing starved cells to mobilize their own constituents including lipid and glycogen stores (Singh et al., 2012). Another well-documented cellular energetic pivot is mitochondrial metabolic system mediated through ATP production and antioxidant activity (Bermejo-Nogales et al., 2015), but the

detailed role of mitochondrial functions as autophagy processes on mediating glass eel's locomotion has been seldom studied.

Here, we sought to clarify the relationship between European glass eel energetics and their pattern of migration behavior, in the framework of the conditional strategy. For this purpose, we characterized the individual's energetic status of glass eels in terms of wet weight (as a proxy of energy stores), standard metabolic rate (SMR) and transcriptomic profile of metabolism-related genes and determined the relationship of these energy- and metabolism-related factors with the propensity to migrate of glass eels, as evaluated in experimental condition. In order to strengthen the possible link between energetic status of glass eels and their propensity to migrate, we used glass eels arriving at the mouth estuary in autumn and spring known to present high and low energetic stores, respectively (Charlon and Blanc, 1982; Claveau et al., 2015; De Casamajor et al., 2000; Elie, 1979).

2. Materials and methods

2.1. Ethics

Procedures used in this study have been validated by the ethics committee N°073 (ref: 2017012015086652). The experiment was carried out in strict accordance with the EU legal frameworks, specifically those relating to the protection of animals used for scientific purposes (i.e., Directive 2010/63/EU), and under the French legislation governing the ethical treatment of animals (Decret no. 2013-118, February 1st, 2013).

2.2. Origin and handling of fish

The main migration season of glass eel in South-West France coastal area lasts from November to April. In this study, one group of 72 marine glass eels was sampled using a dip-net at night and during flood tide on November 3rd 2016 and the same number of glass eels were sampled in the same way on November 17th (hereafter autumn glass eels). Similarly, 72 glass eels were sampled on April 13th 2017 and the same number of glass eels were sampled again on April 28th (hereafter spring glass eels). The sampling marine site is located at Moliets (43° 55'N, 1° 23'W, located 40 km north of the mouth of the Adour estuary, Fig.1). After each collection, glass eels were transferred to the laboratory and maintained at 12°C overnight in a tank containing aerated water from the fishing site. In the next morning, all glass eels were anesthetized and individually measured for initial wet weight (Sartorius CP 153 balance, ± 1.0 mg) and length (± 1.0 mm). Measurements of tryglycerides (TG) at the end of the experiment allowed us to highlight a significant correlation between the final wet weight of individuals and their TG levels in both seasons (Pearson's correlation test, $p=0.0002$ and $p=0.00001$, respectively). According to these results, wet weight was considered in this study as a good proxy of energy stores. Pigment stages were determined according to the criteria of Elie et al. (1982), who described eight stages: VA, VB, VIA0, VIA1, VIA2, VIA3, VIA4 and VIB, in order of increasing pigmentation. 100% of marine glass eels presented a VB stage, regardless of the season.

36 of the 72 individuals were randomly selected and tagged using Visible Implant Elastomer (VIE Tag) (combinations of one or two hypodermic spots of different colors as described by Imbert et al., 2008) in order to follow the swimming activity individually. Once tagged, glass eels were released to wake up in the water from fishing site with the untagged fish. During the next 48 h, the

water was continuously aerated and progressively diluted with fresh water. Water temperature ($12 \pm 0.5^\circ\text{C}$) was regulated using an air conditioner.

2.3. Experimental design and protocol

For each experiment, 36 tagged animals were mixed with the same number of untagged ones to facilitate synchronization of swimming activity to the change in water current direction by increasing density (Bolliet and Labonne, 2008; Bolliet et al., 2007). This group of 72 glass eels were released to an annular tank (Fig.2) installed in a temperature-controlled room. To mimic the tides, the tank was equipped with two pumps - located at its opposite ends - that alternately generated clockwise or counterclockwise water flow every 6.2 h as described in Bolliet et al. (2007). The room was maintained under a photoperiod of 12 L/ 12 D with a very low light intensity during the photophase ($0.2\text{-}0.3 \mu\text{W}/\text{cm}^2$) and a constant UV light ($0.6 \mu\text{W}/\text{cm}^2$). The water temperature was kept at $12 \pm 0.5^\circ\text{C}$ and continuously recorded by thermistors placed in the tank.

The swimming activity of glass eels was traced individually during seven days by a camera programed to record 15 seconds every 40 min. The UV light allowed the identification of each glass eel during the light and dark phases by its elastomer mark. The sampling session duration was chosen to allow fish to pass once through the camera's field of view when swimming in the water column (see Bolliet and Labonne, 2008). A total of 177 sessions of 15 seconds were obtained for autumn glass eels and the same number of sessions for spring ones.

To migrate up estuary, glass eels must synchronize their swimming activity to the tide to use selective flood transport but they also have to sustain swimming activity. So, to evaluate the propensity of glass eels to migrate in our experimental conditions, we first analyzed the synchronization of their swimming activity to the change in water current direction (every 6.2h). When the swimming activity was synchronized to the water current reversal with a period of 12.4h,

glass eels were considered as having a high propensity to migrate and were called 'active'. In contrast, fish that did not synchronize and stayed in the substratum most of the time were called 'non-active'. Then, the level of swimming activity in active glass eels was quantitatively analyzed by counting the total number of observations of each elastomer mark for the 177 sessions of 15sec recorded in each experiment.

After the swimming test, we obtained 35 active glass eels in autumn (19 and 16 in the two experiments, respectively) and 12 active glass eels in spring (5 and 7 in the two experiments, respectively). Active and non active glass eels were pooled per season for analyses.

2.4. Standard metabolic rate (SMR) assay

22 active and 13 non-active glass eels and 12 active and 24 non-active glass eels in autumn and spring, respectively, were randomly retrieved for oxygen consumption determination. Briefly, glass eels were acclimated in a same tank with still water for three days to stay at rest and relative quiet before analysis. Then, they were transferred to 12 respirometry chambers (diameter: 11.2mm, length: 90mm) of an intermittent flow respirometer as described by Régnier et al. (2010), where oxygen consumption was measured individually (one fish per chamber). Tagged glass eels were introduced in the chambers at 3 p.m. and oxygen consumption was recorded continuously every minute until 10 a.m. the next day. The closed/open phase of the system was 20min/20min and the duration of the closed phase was determined in order that oxygen level in the chamber was always kept above 80% O₂ saturation. After termination of the SMR measurements, the background respiration, i.e. oxygen consumption within the respirometer due to microbial respiration, was estimated by measuring the oxygen consumption rate in the respirometer without a fish (i.e. blank run for two hours). Temperature and photoperiod used for the acclimatization phase and oxygen measurement were similar to those used for the behavioral test. The first 15 hours were considered

as a period of acclimatization and the average oxygen consumption per eel was calculated using the last four hours of recording. Measurements were conducted for three days in autumn and spring. SMR ($\text{mm}^3 \text{O}_2/\text{h}$) was expressed in $\text{mm}^3 \text{O}_2$ consumed per hour. We then regressed the logarithm of SMR on the logarithm of wet weight, and used the residuals of this model (*i.e.*, relative SMR) for further analyses. Following oxygen consumption measurement, glass eels were anaesthetized, individually measured for wet weight (Sartorius CP 153 balance, ± 1.0 mg) and length (± 1.0 mm) and stocked at -80°C after immersion in liquid nitrogen.

2.5. High throughput quantitative RT-PCR

The extraction of total RNA from each glass eel analyzed for its oxygen consumption was performed using TRIzol reagent (Invitrogen, 15596018) according to the manufacturer's recommendations. One microgram of the resulting total RNA was reverse transcribed into cDNA using the SuperScript III Reverse Transcriptase kit (Invitrogen, 18080085) with random primers (Promega, Charbonnières, France) according to the manufacturer's instructions.

Primers specific to 59 genes involved in either energy metabolism or oxidative stress (Table 1) were newly designed using Primer3 software (version 4.1.0) and based on the available genomic resources for the European eel (GenBank assembly accession GCA_000695075.1). Primers were validated on a Roche LightCycler 480 System (Roche Diagnostics, Neuilly sur Seine, France). The assays were performed using a reaction mix of 6 μl per sample, each of which contained 2 μl of diluted cDNA template, 0.24 μl of each primer (10 μM), 3 μl Light Cyclyer 480 SY Green Master mix (Roche Diagnostics, 4887352001) and 0.52 μl DNase/RNase-free water (5 Prime GmbH, 2500020). The PCR protocol was initiated at 95°C for 10 min for initial denaturation of the cDNA and hot-start Taq-polymerase activation, followed by 45 cycles of a 3-step amplification program (15 s at 95°C ; 10 s at 60°C and 15 s at 72°C). Melting curves were systematically monitored

(temperature gradient at 1.1 °C/10 s from 65 to 94 °C) at the end of the last amplification cycle to confirm the specificity of the amplification reaction. Each PCR assay included negative controls (reverse transcriptase- and cDNA template-free samples, respectively). Finally, to confirm specificity of the designed primers, the amplicons were purified and sequenced (Beckman-Coulter Genomics, Takeley, UK). The validated primers are listed in Table 1.

High-throughput qRT-PCR was performed by the Genotoul service (<https://get.genotoul.fr>) in Toulouse (France) using the BioMark 96:96 Dynamic Array integrated fluidic circuits (Fluidigm Corporation, San Francisco, USA) described in Cassan-Wang et al. (2012). The specificity of the PCR products was confirmed by analyzing melting curves. Only primers that produced a linear amplification and qPCR products with a single-peak melting curves were used for further analyses. The efficiency of each pair of primers was determined from the data of amplification Ct value plot with a serial dilution of mixture cDNA. $2^{-\Delta\Delta C_T}$ method was used to calculate relative mRNA fold change using formula $2^{\Delta C_{t_target} (control-sample)} / 2^{\Delta C_{t_reference} (control-sample)}$ (Livak and Schmittgen, 2001). The relative expression of Luciferase was used for data normalization as described previously (Marandel et al., 2016).

2.6. Statistical analyses

To characterize the propensity of glass eels to migrate, we first investigate the synchronization of glass eel's swimming activity to the change in water current direction (active/non-active). We assumed that the swimming activity of an individual i at time t $AC(t, i)$ followed a Bernoulli distribution of probability $P(t, i)$ such as:

$$AC(t, i) \sim dbern(P(t, i))$$

We assumed that $P(t, i)$ was a periodic function of time, since it has been previously shown that glass eels display rhythmic swimming activity in response to current reversal (Bolliet and Labonne, 2008):

$$\text{logit}(P(t, i)) = a(i) \times \sin(t \times b(i) + c(i)) + d(i)$$

where $a(i)$ was the strength of the synchronized component of activity, $b(i)$ was related to period, $c(i)$ was related to the trigonometric function phase, $d(i)$ was the non-synchronized component of activity. Fish having a P value above the mean of P meanwhile having an activity periodicity close to 12.4h were considered synchronized and active, others were considered non-active.

A Markov-chain Monte-Carlo (MCMC) sampling approach with Gibbs algorithm in the Bayesian framework (Spiegelhalter et al., 2000, Openbugs software, Version 3.2.3) was used to estimate parameters a, b, c, d . Convergence of estimates was reached during a first set of 10 000 iterations. Another consecutive set of 5000 iterations was run to approximate the posterior distribution of parameter estimates (see Supplementary material 1).

The second parameter used to evaluate the propensity of glass eels to migrate was the level of swimming activity in active glass eels, expressed as the mean number of times each individual was seen swimming in the water column during 7 days.

All other statistical analyses were performed using the R software (v.3.3.1)/R Commander Package. Data were presented as means \pm standard deviation. The comparison of number of active fish in the two seasons was analyzed by chi-square test based on the counts of active/ non-active fish and the average swimming activity in the two seasons was compared by Student's t test. Normalized genes expressions were first analyzed using a hierarchical clustering analysis based on correlation between genes (R Pvcust package). We used the Approximately Unbiased bootstrapping approach

to detect clusters of genes (with an accuracy p -value > 0.95) that displayed the same overall patterns throughout the experimental conditions (see Supplementary materials 2 and 3). Two-way ANOVA was used to analyze the varying wet weight, length and relative SMR in response to season and migration behavior. The interactions in the responses were also evaluated. Differences were considered statistically significant at $p < 0.05$. For synchronized fish, the relationships of swimming activity to wet weight, length and relative SMR were estimated by simple linear regression model. The regression model was considered significant at $p < 0.05$ level. Finally, we evaluated whether genes expression level was correlated with swimming activity (for synchronized fish) for both seasons. To do so, we first grouped genes into five metabolism-related functions: autophagy-lysosome system, mitochondrial turnover, mitochondrial metabolism, antioxidant system and cytosol catabolism (see Table 1). For each group of genes, we ran a Principal Component Analysis (PCA), using a table providing the gene expression levels for all individuals. We then retrieved the score of individuals on the first axis of the PCA, and used these coordinates as a synthetic indicator of the individual level of expression for the genomic function. We then assessed the effects of the swimming activity, the season, and the interaction of both on this synthetic indicator of the genomic function, using a linear regression model. Bonferroni's adjustment for multiple comparisons (here five) lowered the statistical significance to $p < 0.01$ level.

3. Results

3.1. Seasonal variation in glass eel swimming activity

One dead glass eel was found in autumn glass eels and two in springtime glass eels after the swimming test, which left a total of 71 and 70 glass eels in autumn and spring, respectively. The propensity of glass eels to migrate was investigated by their ability to synchronize their swimming activity to the change in water current direction every 6.2h. Glass eels presenting a swimming activity with a period of 12.4h were considered as active and the others as non-active. Results showed that the number of active glass eels was higher in autumn than in spring (chi-square test, $X^2=15.0$, $p<0.001$; Fig.3a). Then, the level of swimming activity was analyzed in active glass eels using the mean number of times each individual was seen swimming in the water column during 7 days. Swimming activity level was higher in autumn than in spring with a mean of 68 ± 41 and 32 ± 21 observations in autumn and spring, respectively (Student's t test, $p<0.001$; Fig.3b). The mean number of observations in inactive glass eels (not synchronized to the change in water current direction) was 3 ± 4 in autumn and 2 ± 3 in spring.

3.2. Energetic status of glass eels depending on season and migration behavior

The energetic status (wet weight, length, standard metabolic rate (SMR) and transcriptomic profile of metabolism-related genes) was investigated in 35 autumn glass eels (22 active and 13 non-active) and in 36 spring glass eels (12 active and 24 non-active).

Wet weight, length and relative SMR

The initial wet weight of autumn glass eels measured before the swimming test ranged from 315 to 398 mg and was higher than that measured in spring glass eels (124 to 285 mg, Fig. 4a, two-way ANOVA, $p<0.001$). Similar results were observed for length ranging from 70 to 76 mm in autumn

and from 60 to 72 mm in spring (Fig. 4b, two-way ANOVA, $p<0.001$). No significant difference in length or weight was observed between active and non-active fish in autumn or spring (Fig. 4a, b, two-way ANOVA, $p=0.902$ in wet weight, $p=0.565$ in length). There was also no interaction between migration behavior and season for these two parameters. Relative SMR, showed no significant difference depending on season (Fig. 4c, two-way ANOVA, $p=0.666$) or migration behavior ($p=0.441$). However, a weakly significant interaction between these two factors was observed ($p=0.048$), wherein active glass eels presented a slightly higher relative SMR than non-active ones in autumn but not in spring.

Expressions of genes involved in energetic metabolism

We analyzed mRNA levels of 59 genes and showed the results by a heat map in a red-white scale (from lower to higher mRNA-expression level, Fig. 5). Some of these genes code for proteins involved in the autophagy/lysosome-related functions, including Macroautophagy (the best characterized sub-class of autophagy involving the formation of double-membrane organelles, or autophagosomes, which engulf portions of cytoplasm for subsequent degradation via lysosomes), Mitophagy (a macroautophagy-dependent specific degradation of mitochondria) and Chaperone-mediated autophagy (a specific autophagic route, known as CMA, that involves the direct delivery of cytosolic proteins targeted for degradation to the lysosomes). The other genes code for proteins involved in mitochondrial turnover and metabolism, the cytosol catabolism and finally the antioxidant system. mRNA levels of these genes were compared in response to season and migration behavior. Using clustering analyses and bootstrapping on normalized individual gene expression data we detected two clusters of genes (and some genes outside) that displayed the same overall patterns throughout the experimental conditions. Overall, the genes involved in energy stress resistance (macroautophagy and mitophagy) clustered in the group of genes overexpressed

in spring glass eels compared to autumn ones, while genes involved in energy production and use (mitochondrial metabolism and CMA) showed an opposite trend. In detail, four macroautophagy genes (*atg5*, *atg7*, *atg12*, *ULK1*) and four mitophagy receptors (*fundc1*, *pink1*, *bnip3a*, *bnip3b*), showed significantly higher transcript levels in spring than in autumn, reflecting advanced energy distress in spring glass eels. In this regard, higher expression was also evidenced in spring glass eels for the gene *drp1*, known as the main player in the process of mitochondrial fragmentation, and three genes involved in mitochondrial biogenesis (*pgc1a1*, *pgc1a2*, *hsp60*), suggesting high mitochondrial turnover to compensate to the loss of mitochondria through mitophagy. In contrast, two genes (*mfn1* and *mfn2*) involved in mitochondrial fusion and cooperation were significantly more expressed in autumn than in spring. Likewise, most studied mitochondrial metabolism related genes, i.e., two genes coding for subunits of the mitochondrial membrane respiratory chain (*mt-ATP6*, *mt-nd5*), two genes involved in fatty acid catabolism (*cpt1a1*, *hadh*) and five genes involved in amino acid catabolism (*glud1*, *got1*, *got2*, *gpt2a*, *gpt2b*), exhibited higher expression in autumn than in spring. Interestingly, a similar trend was also observed for the genes related to CMA (*hsc70a*, *hsc70b*, *lamp2a*, *hsp90*, *phlpp1*), which has been demonstrated to play a major role in the regulation of the hepatic intermediary metabolism. Similarly, five genes involved in the oxidative stress defense (*sod1*, *sod2*, *mtl*, *gstp* and *catalase*) clustered in the group of genes overexpressed in autumn glass eels, possibly as a consequence of higher mitochondrial activity in these animals compared to their spring counterparts. Altogether, these results highlighted the existence of strong differences of the metabolic status between autumn and spring glass eels. However, no clear difference was evidenced between active and non-active glass eels whatever the season considered.

3.3. Relationships of the swimming activity levels of each active glass eel with its energetic status

The individual swimming activity level, expressed as the number of observations for each active glass eel swimming in the water column, ranged from 11 to 161 in autumn and from 11 to 79 in spring.

Linear regression models showing the correlations between the level of swimming activity in active glass eels and the individual wet weight, length and relative SMR are presented in Fig. 6. In autumn glass eels, activity levels were positively correlated to relative SMR (Fig. 6c) but not with wet weight or length (Fig. 6a, b), while spring glass eels displayed a positive correlation between activity and body weight and length, but not with relative SMR (Fig. 6a, b, c).

Among the five genomic functions of interest (autophagy-lysosome system, mitochondrial metabolism, mitochondrial turnover, antioxidant system and cytosol catabolism), the expression levels of mitochondrial metabolism genes and antioxidant system genes were significantly related to swimming activity (Fig.7). We found a positive relationship between the first axis of the PCA for both of the functions and swimming activity level (two-way ANOVA, $p=0.008$ for mitochondrial metabolism and $p=0.007$ for antioxidant system), with no effect of season ($p=0.772$ and 0.074 , respectively) and no significant interaction ($p=0.560$ and 0.384 , respectively; See Supplementary material 4). For both functions, the first axis of the PCA explained 51% of the total gene expression variance. For mitochondrial metabolism function, this first axis was mainly correlated to genes of fatty acid catabolism (*cpt1a2b* and *hadh*), amino acid catabolism (*got1*, *got2*, *gpt2a*, *gpt2b* and *glud1*), mitochondrial respiratory chain complexes (*mt-nd5* and *mt-ATP6*) and *12s rRNA*, while for antioxidant system, this first axis was mainly correlated to *sod1*, *sod2*, *catalase*, *gstp* and *mtl* genes (See Supplementary material 5).

4. Discussion

The main objective of this study was to investigate the relationship between European glass eel energetics and their pattern of migration behavior, in the framework of the conditional strategy. For this purpose, we used autumn and spring marine glass eels known to present high and low energetic stores, respectively. We did observe a higher propensity to migrate in autumn as predicted by the conditional strategy, and individual swimming activity level was also higher in autumn. However, when we compared the energy status of active and non-active glass eels within each seasonal group, we found no support for the conditional strategy: both behavioral groups showed similar wet weight and length. At the individual level, we also found little support for the conditional strategy: energy stores were correlated to the level of swimming activity in active glass eels only in spring, not in autumn. These results are further explained partly by variation in metabolic rates between individuals, and partly by the transcriptome analyses, that indicate striking contrasts in the metabolic states of autumn versus spring eels.

4.1. Autumn and spring glass eels: Highly contrasting metabolic states

Final wet weight was highly correlated to tryglycerides (see section 1.2) and wet weight was considered in this study as a good proxy of energy stores. Here we show that autumn glass eels displayed higher wet weight than spring ones, which is in close agreement to previous observations made in *A. anguilla* glass eels (Charlon and Blanc, 1982; Claveau et al., 2015; De Casamajor et al., 2000; Elie, 1979). Such seasonal differences in biomass and energetic stores have been suggested to be due to the seasonal variations in oceanic ecosystems productivity affecting the growth of leptocephalus larvae during transatlantic transport (Désaunay and Guerault, 1997).

To further characterize the glass eels studied here, we measured their relative standard metabolism but no significant difference was observed between seasons. A high-throughput qRT-PCR analysis was then performed allowing the simultaneous assessment of the expression of 59 genes involved in energy metabolism and oxidative stress. They include genes of the autophagy-related pathways (including macroautophagy, mitophagy and CMA), genes involved in mitochondrial turnover and metabolism and genes of the cellular antioxidant system. Our results show that most of the monitored mitochondrial metabolism-related genes clustered in the group of genes overexpressed in glass eels caught in autumn compared to those sampled in spring. Similarly, the two genes *mfn1* and *mfn2*, known to promote mitochondrial fusion and therefore the cooperation between these organelles (Chen et al., 2003) also grouped to this cluster. These data strongly support that autumn glass eels displayed higher energy production capacity and use than the spring ones. Interestingly, autumn glass eels also presented higher expression of genes related to CMA, known as a master regulator of intermediary metabolism (Tasset and Cuervo, 2016), which support this idea.

In contrast, genes involved in energy stress resistance (macroautophagy and mitophagy) grouped in the cluster of genes overexpressed in spring glass eels compared to autumn glass eels. Macroautophagy is now widely recognized to play a major role in mobilizing diverse cellular energy and nutrient stores (including proteins, carbohydrates and lipids) as well as cellular organelles (including mitochondria, peroxisome, endoplasmic reticulum, the nucleus and ribosomes) during starvation in a large panel of taxa (Kaur and Debnath, 2015). This process is described as a key adaptive response to modulate the metabolism and provides energy when nutrients are scarce. Macroautophagy increases during periods of cellular stress in many eukaryotic species (from yeast to mammals) in order to conserve energy and promote survival. In this regard, we recently reported a significant contribution of macroautophagy-related transcripts production

during long-term fasting to weight loss in glass eels (Bolliet et al., 2017b). The over-representation of genes involved in macroautophagy but also in mitophagy in the cluster of genes highly expressed in spring glass eels compared to their autumn counterpart would therefore reflect a higher catabolic state and an energy distress in spring glass eels.

Overall, the data clearly show that autumn and spring marine glass eels exhibit strong differences in term of both energetic stores and transcriptomic profile of metabolism-related genes, making them relevant models for a better understanding of the relationship between glass eel's organism energetics and their pattern of migration behavior.

4.2. Active vs non-active glass eels

To migrate up estuary, glass eels synchronize to the flood and mobilize energy stores accumulated by the leptocephalus stage to sustain activity (Forward and Tankersley, 2001; Gascuel, 1986; Jellyman, 1979; McCleave and Kleckner, 1982; Wippelhauser and McCleave, 1987). In our experimental conditions, fish that synchronized their swimming activity to the change in water current direction with a period close to 12.4h were considered as having a high probability to migrate. They were called active glass eels. In contrast, non-active glass eels did not synchronized to the water current reversal and were considered as having a low propensity to migrate.

As most glass eels do not feed during migration (Bardonnet and Riera, 2005), energy stores have been considered as a physiological driver in fueling the landward colonization (Edeline, 2007; Edeline et al., 2006). Using salinity preference experiment, it has been suggested that European glass eels choosing fresh water should present a higher energetic status and migration activity than those choosing salt water (Edeline et al., 2005). According to these studies, it was expected here that active glass eels would have a higher wet weight than non-active ones. However, although the higher number of active glass eels and activity level observed in autumn glass eels were associated

to a higher initial wet weight when compared to spring fish, active and non-active glass eels did not show any difference in wet weight in autumn nor in spring. This suggests that energy stores might possibly enhance migration but also that a conditional strategy based on an individual's energetic status cannot fully explain the European glass eel migration behavior observed in our experimental conditions.

Another factor that may be involved in the underlying mechanism of migration concerns relative SMR that represents an integrative measure of the energy expenditure and the celerity at which energy stores are consumed. In salmonids, it is known to fluctuate among individuals in correlation to dominance, aggression, growth rate or starvation (Findstad et al., 2007; see Eliason et al., 2016; Metcalfe et al., 2016 for reviews). Studies investigating the relationships between SMR and propensity to migrate in fish remain scarce but there is some evidence that low energy condition and excessive energy depletion are important factors determining successful upriver migration in salmonids (Eliason and Farell, 2016 and references herein). In the present study, active glass eels presented a slightly higher relative SMR than non-active ones in autumn but not in spring. Links between metabolic rate and fish behavior show a high intra-specific plasticity and are far from being understood (Auer et al., 2016; Careau et al., 2008; Metcalfe et al., 2016). During fasting, fish with a high SMR may have less energy available to allocate to activity but SMR may also reflect their capacity to perform activity (Biro and Stamps, 2010; Careau et al., 2008). In addition, fasting fish with a high SMR will deplete their energy stores more quickly that could decide them to migrate in order to switch their habitat and reach growth area. On the other hand, relative SMR was measured after the swimming test and although fish were kept in a tank during three days before oxygen measurement, one cannot exclude the fact that it was not long enough for active fish to fully recover to a resting metabolic rate after 7 days of activity. Zhang et al. (2018) evidenced

that exercise training increased excess post-exercise oxygen consumption in exhausted *Salmo salar* when compared to control exhausted fish. Duration of recovering reached 15h which was longer than previously found in the literature (Zhang et al., 2018) but still below the resting period fixed in our experiment before oxygen measurement. Further experiment comparing oxygen consumption before and after behavioral test are now required to validate the link between relative SMR and decision to synchronize to the change in water current direction in glass eels.

To further investigate the difference between migration patterns, we then monitored the transcriptomic profile of active and non-active glass eels within and between seasonal groups. However, no clear difference was observed between active and non-active glass eels whatever the considered season. Altogether, our data challenged the conditional strategy based on individual's energetic status for the European glass eels. The relationship between relative SMR and migration behavior remains to be elucidated and although no clear molecular evidence was observed between active and non-active fish, it is not excluded that the genes analyzed and the associated metabolic pathways may be involved in the different behavior observed. Indeed, we focused on gene expression at a single time point that does not give a real picture of the dynamic aspect of the different events at play during complex and integrative metabolic processes such as energy expenditure at rest, which include not only gene transcription but also protein translation and enzyme activity.

4.3. Variability in swimming activity level

Although the swimming activity of all active glass eels was synchronized to the change in water current direction, we observed a high inter-individual variability in activity level as expressed by the total number of observations of each individual swimming in the water column. When the activity level was plotted to the relative SMR, a positive correlation was found in autumn glass eels

but not in spring ones, which may support hypothesis proposed in the previous section concerning SMR in active and non-active autumn fish. In contrast, when the activity level was individually plotted to the weight, a positive correlation was found in spring but not in autumn. Interestingly, the wet weight was higher in autumn glass eels than in spring ones and no overlapping was observed in their distributions. This could suggest a threshold in energy stores below which energy becomes a limiting factor for swimming efficiency. In regarding to gene expression analysis, whatever the season, the genes related to mitochondrial metabolism and antioxidant system positively correlated to swimming activity level. During endurance exercise, the increase of mitochondrial respiration induces the production of reactive oxygen species (ROS), which can lead to the accumulation of cellular damage, unless it can be counterbalanced by antioxidants that act to quench ROS and prevent the oxidation of other important biological molecules (Powers et al., 2011). This finding is also supported by a recent report on birds, where the authors summarized an upregulated antioxidant system coping with the oxidative challenges associated with migratory flight (Cooper-Mullin and McWilliams, 2016).

4.4. Consequences for eel management

As we demonstrated, there is strong seasonal effect on both condition of eels and their behavior. Whereas autumn eels displayed high wet weight and activity, spring eels were strongly constrained energy wise, and displayed reduced migration activity. Population monitorings and management actions should therefore be evaluated in the light of these results. For instance, because of being in energy distress, spring glass eels might be more vulnerable to stress, whereas autumn glass eels could provide a higher plasticity to cope with variation in environmental conditions. In the context of global change, wherein fluctuations in temperatures, hydraulic conditions or pollutants may increase energy expenditure, the spring component of populations should be carefully monitored.

Measures for the recovery of the stock of European eel as presented by the EU (Council Regulation (EC) 1100/2007) proposes stocking of eels i.e. a transfer of glass eels from their fishing area to another place more suitable to their survival and/or growth. Such management actions should however be planned by carefully balancing their costs and benefits: the spring eels should probably be avoided, for they might have limited ability to adapt to the new environments and also because they represent a distinct yet threatened part of the phenotypic variation in the population. Autumn glass eels might adapt with more efficiency to new environments. In any case, if any restocking action is to be implemented, the managers would be well inspired to track the effect of glass eels origins (i.e., season) on the success of their action.

5. Conclusion

Autumn and spring glass eels displayed different energy status that may affect migration behavior in different ways. Autumn fish displayed high energy reserves and capacity for energy production that may have triggered migration behavior in our experimental conditions. However, in both seasons, a conditional strategy based on individual's energy status could not explain why some fish decided to synchronize to the water current direction while some others stayed sheltering in the substratum. The relative SMR may be a possible candidate to explain the different patterns of behavior in autumn glass eels but further studies are now needed to clearly elucidate this point. Spring glass eels presented a higher energy distress than the autumn ones and molecular results also evidenced a higher expression of genes involved in fission, macroautophagy and mitophagy. These processes may have helped glass eels to maintain standard metabolism for vital functions but may be not sufficient to allow a high swimming activity. Indeed, migration requires energy in addition to others physiological tasks and when energy stores dwindle, the ability to migrate may

be directly related to the fish's maximum capacity to increase oxygen consumption. Investigating the metabolic scope in active and non-active fish could be another interesting avenue to explore. Finally, it is also paramount for stocks and biodiversity managers to recognize that the physiological status of glass eels arriving on the oceanic shelf change drastically throughout the seasons, making them nonrandom parts of the whole phenotypic variation at the species level.

Acknowledgements

We wish to thank the IE ECP for the technical support and the China Scholarship Council for the grant to H.L.

References

- Adam, G., Feunteun, E., Prouzet, P., Rigaud, C., 2008. L'anguille EUROPÉENNE: indicateurs d'abondance et de colonisation, 1st ed. Coll. Savoir-faire, Versailles.
- Auer, S. K., Bassar, R. D., Salin, K., Metcalfe, N. B., 2016. Repeatability of metabolic rate is lower for animals living under field versus laboratory conditions. *Journal of Experimental Biology* 219(5), 631-634. doi: 10.1242/jeb.133678
- Bardonnet, A., Riera, P., 2005. Feeding of glass eels (*Anguilla anguilla*) in the course of their estuarine migration: new insights from stable isotope analysis. *Estuarine Coastal and Shelf Science* 63(1-2), 201-209. doi: 10.1016/j.ecss.2004.11.009
- Bermejo-Nogales, A., Calduch-Giner, J. A., Perez-Sanchez, J., 2015. Unraveling the Molecular Signatures of Oxidative Phosphorylation to Cope with the Nutritionally Changing Metabolic Capabilities of Liver and Muscle Tissues in Farmed Fish. *Plos One* 10(4). doi: 10.1371/journal.pone.0122889
- Biro, P. A., Stamps, J. A., 2010. Do consistent individual differences in metabolic rate promote consistent individual differences in behavior? *Trends in Ecology & Evolution* 25(11), 653-659. doi: 10.1016/j.tree.2010.08.003
- Bolliet, V., Labonne, J., 2008. Individual patterns of rhythmic swimming activity in *Anguilla anguilla* glass eels synchronised to water current reversal. *Journal of Experimental Marine Biology and Ecology* 362(2), 125-130. doi: 10.1016/j.jembe.2008.06.017
- Bolliet, V., Claveau, J., Jarry, M., Gonzalez, P., Beaudrimont, M., Monperrus M., 2017a. Migratory Behavior, metabolism, oxidative stress and mercury concentrations in marine and estuarine European eels (*Anguilla Anguilla*). *Physiology and Behavior* 169, 33-40. doi: 10.1016/j.physbeh.2016.11.008
- Bolliet, V., Labonne, J., Olazcuaga, L., Panserat, S., Seiliez, I., 2017b. Modeling of autophagy-related gene expression dynamics during long term fasting in European eel (*Anguilla*

- anguilla*). Scientific Reports 7(1), 17896. doi: 10.1038/s41598-017-18164-6
- Bolliet, V., Lambert, P., Rives, J., Bardonnnet, A., 2007. Rhythmic swimming activity in *Anguilla anguilla* glass eels: Synchronisation to water current reversal under laboratory conditions. Journal of Experimental Marine Biology and Ecology 344(1), 54-66. doi: 10.1016/j.jembe.2006.12.027
- Bureau du Colombier, S. B., Bolliet, V., Lambert, P., Bardonnnet, A., 2007. Energy and migratory behavior in glass eels (*Anguilla anguilla*). Physiology & Behavior 92(4), 684-690. doi: 10.1016/j.physbeh.2007.05.013
- Careau, V., Thomas, D., Humphries, M. M., Reale, D., 2008. Energy metabolism and animal personality. Oikos 117(5), 641-653. doi: 10.1111/j.0030-1299.2008.16513.x
- Cassan-Wang, H., Soler, M., Yu, H., Camargo, E. L. O., Carocha, V., Ladouce, N., Grima-Pettenati, J., 2012. Reference Genes for High-Throughput Quantitative Reverse Transcription-PCR Analysis of Gene Expression in Organs and Tissues of Eucalyptus Grown in Various Environmental Conditions. Plant and Cell Physiology 53(12), 2101-2116. doi: 10.1093/pcp/pcs152
- Charlon, N., Blanc, J. M., 1982. Etude des civelles d'*Anguilla anguilla* L. dans la région du bassin de l'Adour. 1. Caractéristiques biométriques de longueur et de poids en fonction de la pigmentation. Archiv fuer Hydrobiologie 93(2), 238-255.
- Chen, H. C., Detmer, S. A., Ewald, A. J., Griffin, E. E., Fraser, S. E., Chan, D. C., 2003. Mitofusins Mfn1 and Mfn2 coordinately regulate mitochondrial fusion and are essential for embryonic development. Journal of Cell Biology 160(2), 189-200. doi: 10.1083/jcb.200211046
- Claveau, J., Monperrus, M., Jarry, M., Pinaly, H., Baudrimont, M., Gonzalez, P., Bolliet, V., 2015. Spatial and seasonal variations of methylmercury in European glass eels (*Anguilla anguilla*) in the Adour estuary (France) and relation to their migratory behaviour. Environmental Science and Pollution Research 22(14), 10721-10732. doi: 10.1007/s11356-015-4303-3
- Cooper-Mullin, C., McWilliams, S. R., 2016. The role of the antioxidant system during intense endurance exercise: lessons from migrating birds. Journal of Experimental Biology 219, 3684-3695. doi: 10.1242/jeb.123992
- Daverat, F., Limburg, K. E., Thibault, I., Shiao, J. C., Dodson, J. J., Caron, F. O., Wickstrom, H., 2006. Phenotypic plasticity of habitat use by three temperate eel species, *Anguilla anguilla*, *A-japonica* and *A-rostrata*. Marine Ecology Progress Series 308, 231-241. doi: 10.3354/meps308231
- Davey, A. J. H., Jellyman, D. J., 2005. Sex determination in freshwater eels and management options for manipulation of sex. Reviews in Fish Biology and Fisheries 15(1-2), 37-52. doi: 10.1007/s11160-005-7431-x
- De Casamajor, M., Prouzet, P., Lazure, P., 2000. Identification des flux de civelles (*Anguilla anguilla*) à partir des relations d'allométrie en fonction des conditions hydrodynamiques de l'estuaire de l'Adour. Aquatic Living Resources 13(6), 411-420. doi:10.1016/S0990-7440(00)01092-5
- Désaunay, Y., Guerault, D., 1997. Seasonal and long-term changes in biometrics of eel larvae: a possible relationship between recruitment variation and North Atlantic ecosystem productivity. Journal of Fish Biology 51, 317-339. doi: 10.1111/j.1095-8649.1997.tb06106.x

- Edeline, E., 2007. Adaptive phenotypic plasticity of eel diadromy. *Marine Ecology Progress Series* 341, 229-232. doi: 10.3354/meps341229
- Edeline, E., Dufour, S., Elie, P., 2005. Role of glass eel salinity preference in the control of habitat selection and growth plasticity in *Anguilla anguilla*. *Marine Ecology Progress Series* 304, 191-199. doi: 10.3354/meps304191
- Edeline, E., Lambert, P., Rigaud, C., Elie, P., 2006. Effects of body condition and water temperature on *Anguilla anguilla* glass eel migratory behavior. *Journal of Experimental Marine Biology and Ecology* 331(2), 217-225. doi: 10.1016/j.jembe.2005.10.011
- Eliason, E. J., Farrell, A. P., 2016. Oxygen uptake in Pacific salmon *Oncorhynchus* spp.: when ecology and physiology meet. *Journal of Fish Biology* 88(1), 359-388. doi: 10.1111/jfb.12790
- Elie, P., 1979. Contribution à l'étude des montées de civelles d'*Anguilla Anguilla* L., dans l'estuaire de la Loire: Pêche écophysiologie et élevage. Ph.D. thesis, University of Rennes I, 383 p.
- Elie, P., Lecomte-Finiger, R., Cantrelle, I., Charlon, N., 1982. Définition des limites des différents stades pigmentaires durant la phase civelle d'*Anguilla anguilla* L. (Poisson Téléostéen Anguilliforme). *Vie et Milieu* 32(3), 149-157. <https://prodinra.inra.fr/record/78575>
- Finstad, A. G., Forseth, T., Ugedal, O., Naesje, T. F., 2007. Metabolic rate, behaviour and winter performance in juvenile Atlantic salmon. *Functional Ecology* 21(5), 905-912. doi: 10.1111/j.1365-2435.2007.01291.x
- Forward, R. B., Tankersley, R. A., 2001. Selective tidal-stream transport of marine animals. *Oceanography and Marine Biology* 39(39), 305-353.
- Gaillard, M., Bernatchez, L., Tremblay, R., Audet, C., 2015. Regional variation in energy storage strategies in American glass eels from Eastern Canada. *Comparative Biochemistry and Physiology a-Molecular & Integrative Physiology* 188, 87-95. doi: 10.1016/j.cbpa.2015.06.019
- Gascuel, D., 1986. Flow-carried and active swimming migration of the glass eel (*Anguilla-anguilla*) in the tidal area of a small estuary on the French Atlantic coast. *Helgolander Meeresuntersuchungen* 40(3), 321-326. doi: 10.1007/bf01983739
- Geffroy, B., Bardonnnet, A., 2016. Sex differentiation and sex determination in eels: consequences for management. *Fish and Fisheries* 17(2), 375-398. doi: 10.1111/faf.12113
- Harrison, A. J., Walker, A. M., Pinder, A. C., Briand, C., Aprahamian, M. W., 2014. A review of glass eel migratory behaviour, sampling techniques and abundance estimates in estuaries: implications for assessing recruitment, local production and exploitation. *Reviews in Fish Biology and Fisheries* 24(4), 967-983. doi: 10.1007/s11160-014-9356-8
- Imbert, H., Arrowsmith, R., Dufour, S., Elie, P., 2008. Relationships between locomotor behavior, morphometric characters and thyroid hormone levels give evidence of stage-dependent mechanisms in European eel upstream migration. *Hormones and Behavior* 53(1), 69-81. doi: 10.1016/j.yhbeh.2007.06.011
- Jellyman, D. J., 1979. Upstream migration of glass-eels (*Anguilla* spp) in the Waikato River. *New Zealand Journal of Marine and Freshwater Research* 13(1), 13-22. doi: 10.1080/00288330.1979.9515776
- Kaur, J., Debnath, J., 2015. Autophagy at the crossroads of catabolism and anabolism. *Nature Reviews Molecular Cell Biology* 16(8), 461-472. doi: 10.1038/nrm4024

- Kawakami, Y., Mochioka, N., Nakazono, A., 1999. Immigration patterns of glass-eels *Anguilla japonica* entering river in northern Kyushu, Japan. *Bulletin of Marine Science* 64(2), 315-327.
- Krueger, W. H., Oliveira, K., 1999. Evidence for environmental sex determination in the American eel, *Anguilla rostrata*. *Environmental Biology of Fishes* 55(4), 381-389. doi: 10.1023/A:1007575600789
- Laffaille, P., Acou, A., Guiouillet, J., Mounaix, B., Legault, A., 2006. Patterns of silver eel (*Anguilla anguilla* L.) sex ratio in a catchment. *Ecology of Freshwater Fish* 15(4), 583-588. doi: 10.1111/j.1600-0633.2006.00195.x
- Livak, K. J., Schmittgen, T. D., 2001. Analysis of relative gene expression data using real-time quantitative PCR and the 2(T)(-Delta Delta C) method. *Methods* 25(4), 402-408. doi: 10.1006/meth.2001.1262
- Marandel, L., Lepais, O., Arbenoits, E., Veron, V., Dias, K., Zion, M., Panserat, S., 2016. Remodelling of the hepatic epigenetic landscape of glucose-intolerant rainbow trout (*Oncorhynchus mykiss*) by nutritional status and dietary carbohydrates. *Scientific Reports* 6. doi: 10.1038/srep32187
- McCleave, J. D., Kleckner, R. C., 1982. Selective tidal stream transport in the estuarine migration of glass eels of the american eel (*Anguilla-rostrata*). *Journal Du Conseil* 40(3), 262-271.
- Metcalf, N. B., Van Leeuwen, T. E., Killen, S. S., 2016. Does individual variation in metabolic phenotype predict fish behaviour and performance? *Journal of Fish Biology* 88(1), 298-321. doi: 10.1111/jfb.126
- Parsons, J., Vickers, K. U., Warden, Y., 1977. Relationship between elver recruitment and changes in sex-ratio of silver eels *Anguilla-anguilla*-L migrating from Lough Neagh, Northern-Ireland. *Journal of Fish Biology* 10(3), 211-229. doi: 10.1111/j.1095-8649.1977.tb05127.x
- Powers, S. K., Nelson, W. B., Hudson, M. B., 2011. Exercise-induced oxidative stress in humans: cause and consequences. *Free Radical Biology and Medicine* 51, 942-950. doi: 10.1016/j.freeradbiomed.2010.12.009
- Régner, T., Bolliet, V., Labonne, J., Gaudin, P., 2010. Assessing maternal effects on metabolic rate dynamics along early development in brown trout (*Salmo trutta*): an individual-based approach. *Journal of Comparative Physiology B-Biochemical Systemic and Environmental Physiology* 180(1), 25-31. doi: 10.1007/s00360-009-0385-x
- Secor, D. H., Hendersonarzapalo, A., Piccoli, P. M., 1995. Can otolith microchemistry chart patterns of migration and habitat utilization in anadromous fishes. *Journal of Experimental Marine Biology and Ecology* 192(1), 15-33. doi: 10.1016/0022-0981(95)00054-u
- Singh, R., Cuervo, A. M., 2012. Lipophagy: connecting autophagy and lipid metabolism. *International Journal of Cell Biology* 2012, 282041. doi:10.1155/2012/282041
- Spiegelhalter, D. J., Myles, J. P., Jones, D. R., Abrams, K. R., 2000. Bayesian methods in health technology assessment: a review. *Health Technology Assessment* 4(38): 1-130.
- Tasset, I., Cuervo, A. M., 2016. Role of chaperone-mediated autophagy in metabolism. *The Febs Journal* 283, 2403-2413. doi: 10.1111/febs.13677
- Tesch, F.W., 2003. *The Eel*, fifth ed. Wiley, New York.
- Tsukamoto, K., Arai, T., 2001. Facultative catadromy of the eel *Anguilla japonica* between freshwater and seawater habitats. *Marine Ecology Progress Series* 220, 265-276. doi:

- 10.3354/meps220265
- Tsukamoto, K., Nakai, I., Tesch, W. V., 1998. Do all freshwater eels migrate? *Nature* 396(6712), 635-636. doi: 10.1038/25264
- Tzeng, W. N., 1996. Effects of salinity and ontogenetic movements on strontium: calcium ratios in the otoliths of the Japanese eel, *Anguilla japonica* Temminck and Schlegel. *Journal of Experimental Marine Biology and Ecology* 199(1), 111-122. doi: 10.1016/0022-0981(95)00185-9
- Wippelhauser, G. S., McCleave, J. D., 1987. Precision of behavior of migrating juvenile American eels (*Anguilla-rostrata*) utilizing selective tidal stream transport. *Journal Du Conseil* 44(1), 80-89.
- Zhang, Y., Claireaux, G., Takle, H., Jorgensen, S. M., Farrell, A. P., 2018. A three-phase excess post-exercise oxygen consumption in Atlantic salmon *Salmo salar* and its response to exercise training. *Journal of Fish Biology* 92(5), 1385-1403. doi: 10.1111/jfb.13593

Figure legends

Fig.1 Sampling station of glass eels.

Fig.2 Diagrammatic top view of the annular flume.

Fig.3 Swimming behavior of autumn and spring glass eels. (a) Number of active glass eels, (b) Level of swimming activity of active glass eels expressed as the mean number of times each individual was seen swimming in the water column during 7 days. Data is presented by means \pm standard deviation. Statistical significance *p*-values are indicated at 0.05% level. Numbers in the x-axis text represent sample sizes for each group.

Fig.4 Box-plots (median, 25–75% CI, min-max) of the wet weight (a), length (b) and relative SMR (c) of glass eels in response to season (autumn and spring) and differentiated migration behavior (A= active, NA= non-active). Statistical significance *p*-values and the interactions in the responses are indicated. Numbers in the x-axis text represent sample sizes for each group.

Fig.5 Heatmap of mean gene expressions calculated per season and migration behavior (A= active, NA= non-active). The heatmap is organized through hierarchical clustering based on correlation of expression between genes among individuals. Two clusters were detected using bootstrapping resampling to estimate approximated unbiased values. They were statistically supported with accuracy *p*-values > 0.95 . Six other genes did not fit in any of the two clusters.

Fig.6 Scatter plot for the observed individual swimming activity of active autumn and spring glass eels against the wet weight (a), length (b) and relative SMR (c). Empty circle= autumn, full circle= spring.

671 Fig. 7 Relationship between the first axis of the PCA for genes related to mitochondrial metabolism
672 (a) and antioxidant system (b) and the swimming activity level. Empty circle: autumn, full circle:
673 spring. The prediction plotted on the figure correspond to a simple linear regression between the
674 first PCA axis and the swimming activity level (considering no effect of season was detected) with
675 associated R^2 and p -value.

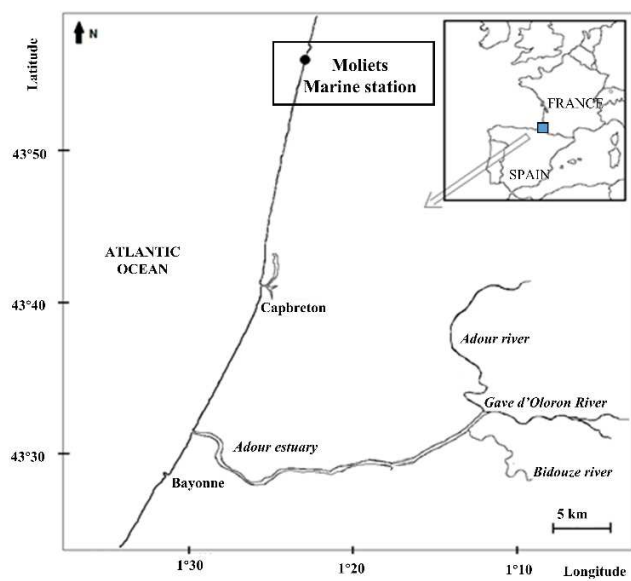


Fig. 1

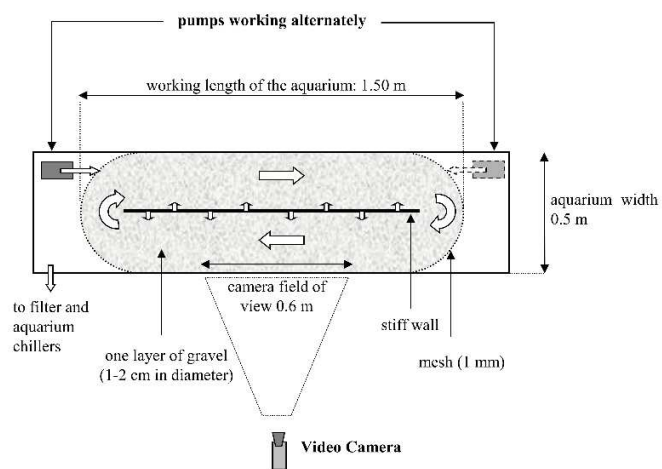


Fig. 2

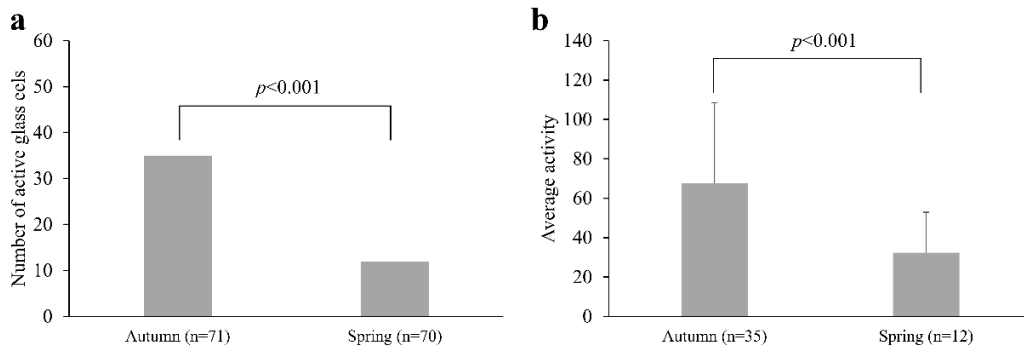


Fig. 3

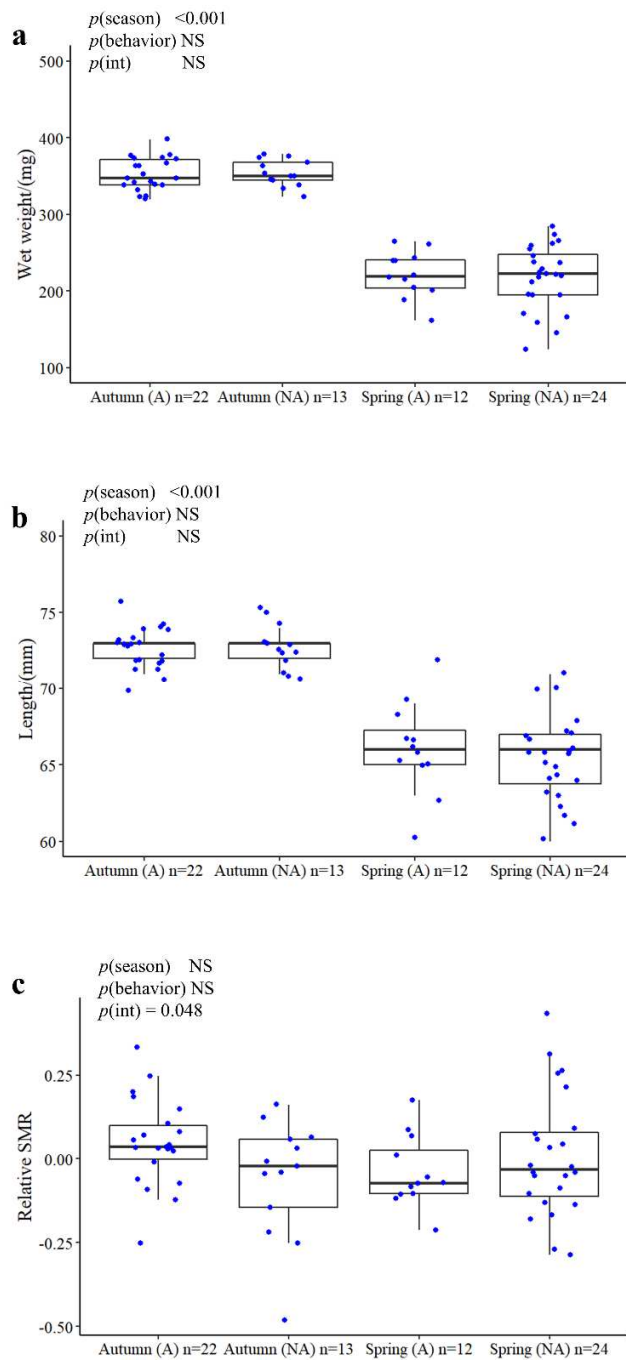


Fig. 4

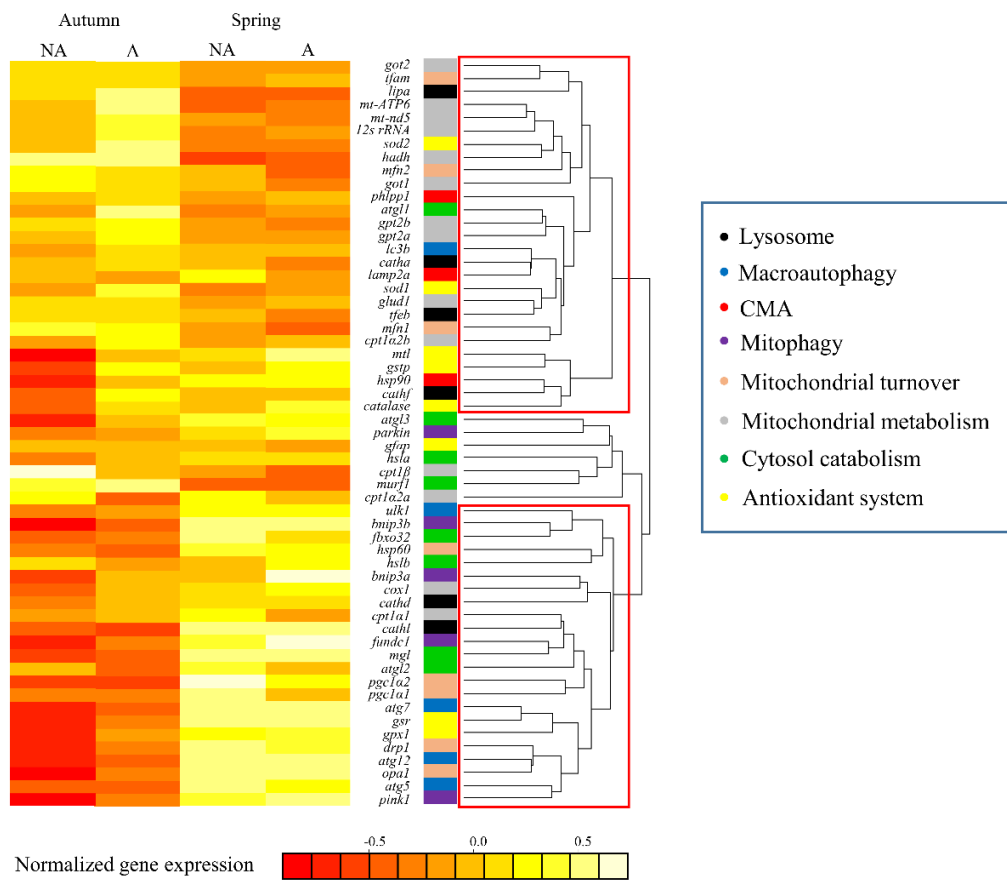


Fig. 5

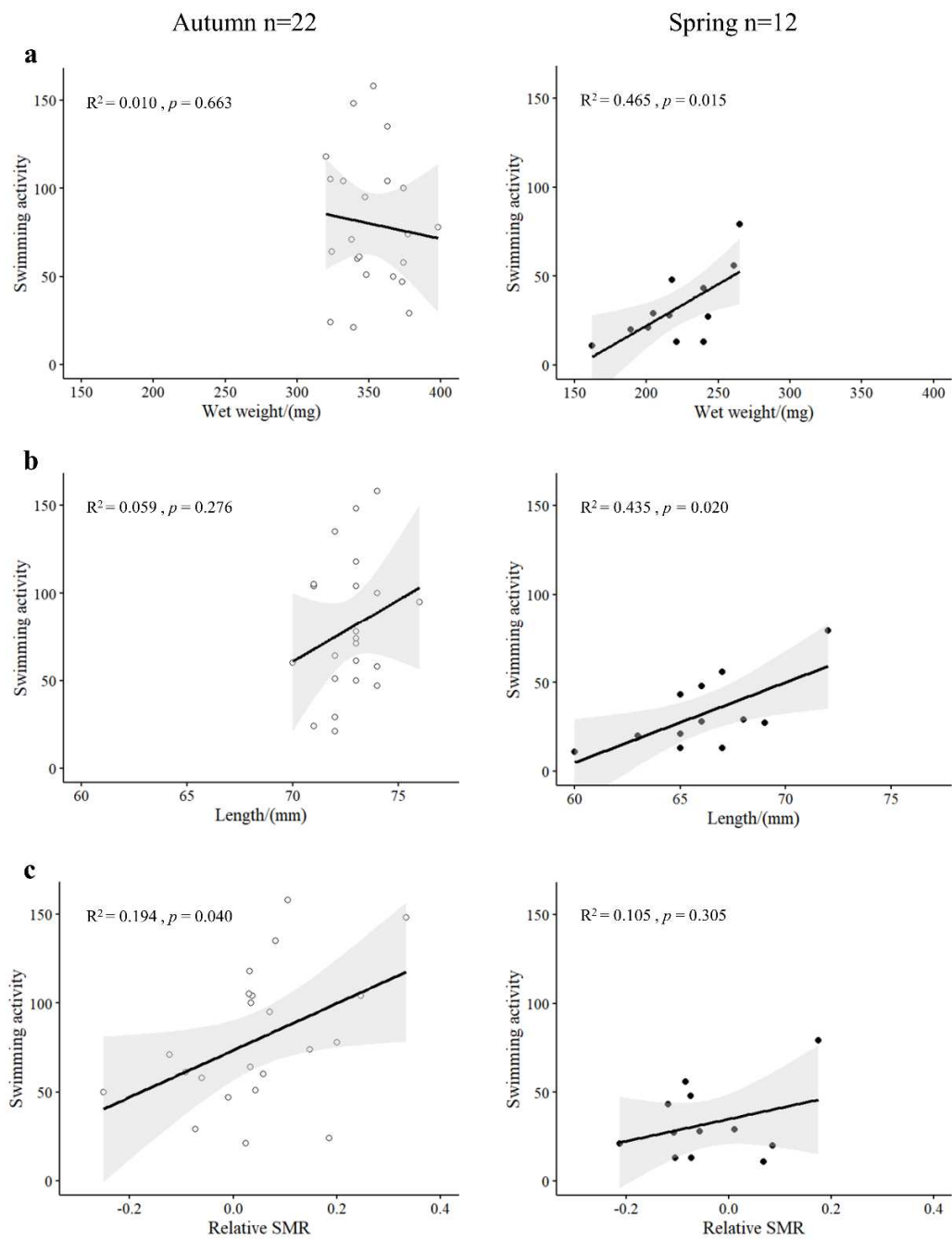


Fig. 6

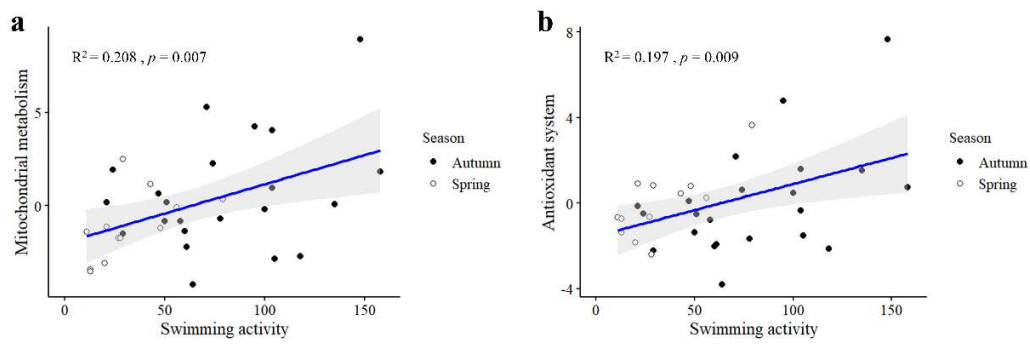


Fig. 7

Table 1. Genes involved in each metabolism-related function and sequences of the primer pairs used for real-time quantitative RT-PCR.

Function	Sub-function	Gene <i>abb.</i>	5'/3' Forward primer	5'/3' Reverse primer
Autophagy-lysosome system	Macroautophagy	<i>atg5</i> <i>atg7</i> <i>atg12</i> <i>lc3</i> <i>ULK1</i>	AGGGTCAGGTGGTCAATGAG CCTGAGCTCTCCCTGAACAC GCAGTAGGGGACACTCCTAT TACAGGACATAGGCCGCTAA GGACCTGTGGAGCATAGGAA	CTGTGCGTCATCGTCTGGTA CAGATCCAAGGAAGGAACCA CACTGCCAAAACATTCAAATAAC ACTCGCTGTTCAAATGTCCT GGAAAAAATCATCGAAGTCCAT
	Lysosome	<i>cathA</i> <i>cathD</i> <i>cathF</i> <i>cathL</i> <i>tfEB</i> <i>lipA</i>	GGGAACAAGCACCTGCATTA TCCAGGGAGAGTACATGGTTG GGGATATGGACATCGTAATGG TCAGTTCTACCAATCTGGAATCTAC TGTCACGACAGTCACATGGAT GTGTGCGTTTGCTTGTGTCT	CGCCATCATCCTGAATTAGA ACATCTCCCAGAATCCACAG GCAGATGGGCGTTGTTTAAT CTTCCTGTCTTTGGCCATGT CTTCCGACAGCTCCTTCTTGA TTTTACAGTGGCTTCATGC
	CMA	<i>lamp2a</i> <i>phlpp1</i> <i>hsp90</i> <i>hsc70a</i> <i>hsc70b</i> <i>fundc1</i>	CTGAGGAATGCCAAGCTGAT GAGGAGGTGAAGAGGCACAG GAAGGCAGAGCTGACAA ATGTCAAAGGGACCAGCAG AGCAGTTGGGATTGATCTGG TGGTGTGCAGGATATCTTTTCA	TGAAATAGGCCACCAACACA CAGACTGCAGCATGACAGGT ATCAATCCCAGGCCAAGTT ATCAGCCTCTCGGTGTCAGT CAACTTGATTCTTCGCTGCAT GCTTTGTTACAGTCCTTCTC
	Mitophagy	<i>pink1</i> <i>parkin</i> <i>bnip3a</i> <i>bnip3b</i>	TAGCTGCCAACATTCTGCAC CTGGACTGCTTCCACACGTA GGGAAAATGAGTTGCACGTT TAGCCAGGTTAAATGCAAGG	CCAGGAAGCACCTCTGTAGC CGTACTGCTCCTCTCCAAGG CCCTTGCAATTTGGGTAGAA TCCCAGCAGCAGGTCTATT
Mitochondrial turnover	Mito Biogenesis	<i>pgc1a1</i> <i>pgc1a2</i> <i>tfam</i> <i>hsp60</i>	GATGAGAGACGGGTGGTGTGA AGGTGGCAAGACACAAAACC CACAATGCCGGCAAAGTTGA TGGACGCTGGAGATCTTCTT GCTGAGAGACGACCTGGTTC	GTGTAGCGGTAGGTGATGAAG CCGGACGTGAGGTACTTGAG CACAACGTCCTCTCGTCCAA TCACTGTGAAGGATGGCAAA AAAGTGTTTCTCCGTGTTTCATC
	Mito Fusion	<i>mfn1</i> <i>mfn2</i> <i>opa1</i>	CCTGGTGCAATGTCTCTGGT CCACTACTACCAGAGGGGCT AAACTGGACCTGATGGATGC	TTTGATGTAGGCCGCCAACT CCAGGACCTCCTTACGCTTC GGGAGGGGTACTTCTTCTGC
	Mito Fission	<i>drp1</i>		
Mitochondrial metabolism	Fatty acid catabolism	<i>cpt1a1</i> <i>cpt1a2a</i> <i>cpt1a2b</i> <i>cpt1β</i> <i>hadh</i>	AGAGACCTGTGACCCACAC TGATGTTACGGAGCTTGTGC AGGCAGGTGTACCTCTCTGG CCAGGCTGTGGATGAATCTT CCTTCGATGCTCTCCTTGAC	TGAAGACATGTACCCACCA GTTCTGGCAAGTGCAACTCA GCGCACTGAGAGACTGACTG GCCGAGTGCTTTTGAAGTC GGCCACATCAATGTCTTCTCT
	Amino acid catabolism	<i>glud1</i> <i>got1</i> <i>got2</i> <i>gpt2a</i> <i>gpt2b</i>	CGAGGATCCGAACCTTCTCA CAACAGATCGGCATGTTTCAG GGAGTGTACCCTCCAGAGC TTAAGAAGCCATTCACTGAGGT ACTCCACATCCAAGTGCTACAT	GACAGGCTCAAAACGTGGTT TTATTGGACCTTGGTGACAGC GTGTAGGCCTTGAGCTGCAT TGGGCATGTGCAGAGAGC CGACACCAGTTTGGTGAGC
	Mitochondrial respiratory chain complexes	<i>mt-ATP6</i> <i>mt-nd5</i> <i>cox1</i>	CTAGGCTGTCTCCATACAC CCTCTGTTTCAGGCTCCAT TAGAGGCCGGAGCTGG	CTGGTGTTCTTCTGCGCAGT GGGCTCAGGCGTTAAGGTA GGGGAGTTTGGTACTGTGTAAT
	Mito 12S rRNA	<i>12s rRNA</i>	ACCCGTGAGAATGCCCT	GTGGCTGGCACGAGTT
Antioxidant system		<i>sod1</i> <i>sod2</i> <i>catalase</i> <i>mtl</i> <i>gstp</i> <i>gsr</i> <i>gpx1</i> <i>gfap</i>	TCAAGGACAGAATGCTCACG CACCACGCCACATATGTCAA AGCAACCGATCAAATGAAATTATGG TGCATACGTGTAAGAAAAGCTG CACTGGGGATGTAGGCTGTT GCCCTATCGCTCTCAGTGAC CAAGTGATCATCTGGAGCC TGGAGATCGAGAGGGACAAC	TTTTCAGGCTTTCCTCGTTG AGCTCCCCTTGAGGTTCC CAGCTCCCTTGGCGTG TTCATGTTACGGCAGGAATG GCCAGACTGATCAACTGCAA GAGGTACAGACCCAGTGT GGGACGTTTTACTTCGCCAG CCTCTCCAACCTGGACACGAT
Cytosol catabolism	Lipid catabolism	<i>hsla</i> <i>hslb</i> <i>mgl</i> <i>atgl1</i> <i>atgl2</i> <i>atgl3</i>	GGTCACCTCCGGCATAAGTA CTGTGAGAGACGGAGCTGAT TGCAGCATATAGACCAGATCA CACCAACACCAGCATTCACT GGTGATGGCAGAGATGTGTC GCGCGCAAAATTTAGTGTTT	AATGACCAACAGCAATGCAA AGATGAGGCGCATGTTGAC AACACCTTGACGGGTGAGAC CTCGATATTGCAGCAGTCCA CTTCTCAGGCACGGGTTG TCCTCTTCACTCCCTTCAGC
	Protein catabolism	<i>fbxo32</i> <i>murfl</i>	TCCTCTTCTGGAAGGACACA CTGTGAAGTCTCGCCCTAC	TCCAGGAATCCATTGCACTA CAACTGCTTCTGACCTGAC
Reference gene		<i>luciferase</i>	CATTCTTCGCCAAAAGCACTCTG	AGCCCATATCCTTGTGCTATCCC

How does energetic status affect the probability to migrate in European glass eel?

Autumn



Spring

Energy stores
Probability to migrate

