



**HAL**  
open science

## Potential of High-Resolution Pléiades Imagery to Monitor Salt Marsh Evolution After Spartina Invasion

Bárbara Proença, Frédéric Frappart, Bertrand Lubac, Vincent Marieu, Bertrand Ygorra, Lionel Bombrun, Richard Michalet, Aldo Sottolichio

► **To cite this version:**

Bárbara Proença, Frédéric Frappart, Bertrand Lubac, Vincent Marieu, Bertrand Ygorra, et al.. Potential of High-Resolution Pléiades Imagery to Monitor Salt Marsh Evolution After Spartina Invasion. Remote Sensing, 2019, 11 (8), pp.968. 10.3390/rs11080968 . hal-02294897

**HAL Id: hal-02294897**

**<https://hal.science/hal-02294897>**

Submitted on 19 Dec 2020

**HAL** is a multi-disciplinary open access archive for the deposit and dissemination of scientific research documents, whether they are published or not. The documents may come from teaching and research institutions in France or abroad, or from public or private research centers.

L'archive ouverte pluridisciplinaire **HAL**, est destinée au dépôt et à la diffusion de documents scientifiques de niveau recherche, publiés ou non, émanant des établissements d'enseignement et de recherche français ou étrangers, des laboratoires publics ou privés.



Distributed under a Creative Commons Attribution - NoDerivatives 4.0 International License

Article

# Potential of High-Resolution Pléiades Imagery to Monitor Salt Marsh Evolution After *Spartina* Invasion

Bárbara Proença <sup>1,\*</sup>, Frédéric Frappart <sup>2</sup>, Bertrand Lubac <sup>1</sup>, Vincent Marieu <sup>1</sup>,  
Bertrand Ygorra <sup>1</sup>, Lionel Bombrun <sup>3</sup>, Richard Michalet <sup>1</sup> and Aldo Sottolichio <sup>1</sup>

<sup>1</sup> University of Bordeaux, UMR 5805 EPOC, Avenue des Facultés, 33405 Talence CEDEX, France; bertrand.lubac@u-bordeaux.fr (B.L.); vincent.marieu@u-bordeaux.fr (V.M.); bertrand.ygorra@etu.u-bordeaux.fr (B.Y.); richard.michalet@u-bordeaux.fr (R.M.); aldo.sottolichio@u-bordeaux.fr (A.S.)

<sup>2</sup> LEGOS, UMR 5566, CNES/CNRS/IRD/UPS, Observatoire Midi-Pyrénées, 14 Avenue Edouard Belin, 31400 Toulouse, France; frederic.frappart@legos.obs-mip.fr

<sup>3</sup> Laboratoire IMS, Signal and Image group, Université de Bordeaux, CNRS, UMR 5218, 351 Cours de la Libération, 33400 Talence, France; lionel.bombrun@agro-bordeaux.fr

\* Correspondence: barbara.proenca@u-bordeaux.fr

Received: 14 March 2019; Accepted: 20 April 2019; Published: 23 April 2019



**Abstract:** An early assessment of biological invasions is important for initiating conservation strategies. Instrumental progress in high spatial resolution (HSR) multispectral satellite sensors greatly facilitates ecosystems' monitoring capability at an increasingly smaller scale. However, species detection is still challenging in environments characterized by a high variability of vegetation mixing along with other elements, such as water, sediment, and biofilm. In this study, we explore the potential of Pléiades HSR multispectral images to detect and monitor changes in the salt marshes of the Bay of Arcachon (SW France), after the invasion of *Spartina anglica*. Due to the small size of *Spartina* patches, the spatial and temporal monitoring of *Spartina* species focuses on the analysis of five multispectral images at a spatial resolution of 2 m, acquired at the study site between 2013 and 2017. To distinguish between the different types of vegetation, various techniques for land use classification were evaluated. A description and interpretation of the results are based on a set of ground truth data, including field reflectance, a drone flight, historical aerial photographs, GNSS and photographic surveys. A preliminary qualitative analysis of NDVI maps showed that a multi-temporal approach, taking into account a delayed development of species, could be successfully used to discriminate *Spartina* species (*sp.*). Then, supervised and unsupervised classifications, used for the identification of *Spartina* *sp.*, were evaluated. The performance of the species identification was highly dependent on the degree of environmental noise present in the image, which is season-dependent. The accurate identification of the native *Spartina* was higher than 75%, a result strongly affected by intra-patch variability and, specifically, by the presence of areas with a low vegetation density. Further, for the invasive *Spartina anglica*, when using a supervised classifier, rather than an unsupervised one, the accuracy of the classification increases from 10% to 90%. However, both algorithms highly overestimate the areas assigned to this species. Finally, the results highlight that the identification of the invasive species is highly dependent both on the seasonal presence of itinerant biological features and the size of vegetation patches. Further, we believe that the results could be strongly improved by a coupled approach, which combines spectral and spatial information, i.e., pattern-recognition techniques.

**Keywords:** biological invasions; coastal wetlands; multi-spectral imagery; NDVI; Pléiades; Pixel classification; salt marsh; *Spartina anglica*; *Spartina maritima*

## 1. Introduction

Biological invasions often represent an important source of change in a system. They are mostly perceived as a possible threat to local biodiversity [1–4]. Occasionally, the arrival of a new species can also carry significant benefits to ecosystem services [3,5–7]. The consequences of biological invasions are usually difficult to predict. Their impact on ecosystems may significantly change in space and time [8] because of a variable adaptive response of the host communities. This response can induce a slowdown of the invasive species (IS) proliferation or, conversely, a sudden rapid expansion. The detection and mapping of the earliest stage of IS development and expansion often turns out to be the best strategy for anticipating and controlling their impact [9,10].

Due to the frequency of physical disturbance, tidal flats and salt marshes present a high susceptibility to biological invasions [11]. This vulnerability particularly increases with human pressure [12]. These systems are characterized by complex interactions between geomorphological patterns and ecological structures [13] and present a highly dynamic and extensive character, which, being associated with access difficulties, make remote sensing an appealing monitoring tool [14–16].

Several studies have already demonstrated the strong potential of using optical satellite imagery in mapping intertidal vegetation [10,13,17–19], and particularly, for the monitoring of biological invasions [20–22]. Intertidal vegetation follows a natural spatial zonation, according to its tolerance to the different tidal levels [23,24]. This natural zonation represents an advantage for remote sensing assessment, because it provides a clear physical separation between different species. Vegetation tends to grow in patches of clearly demarcated borders, presenting a relative homogeneity from a radiometric point of view, and the meadows of each species tend to be constant in time [14]. However, despite the relative intra-patch homogeneity, different degrees of vegetation cover and mixing can occur when the pixel size increases [14,25]. The environmental background noise, due to the soil characteristics, water and biofilm, then generates a significant per-pixel variability of the upwelling radiative signal [26]. Further, there is also a significant time dependency on plant phenology that can largely influence species differentiation in spaceborne imagery [22,26–28].

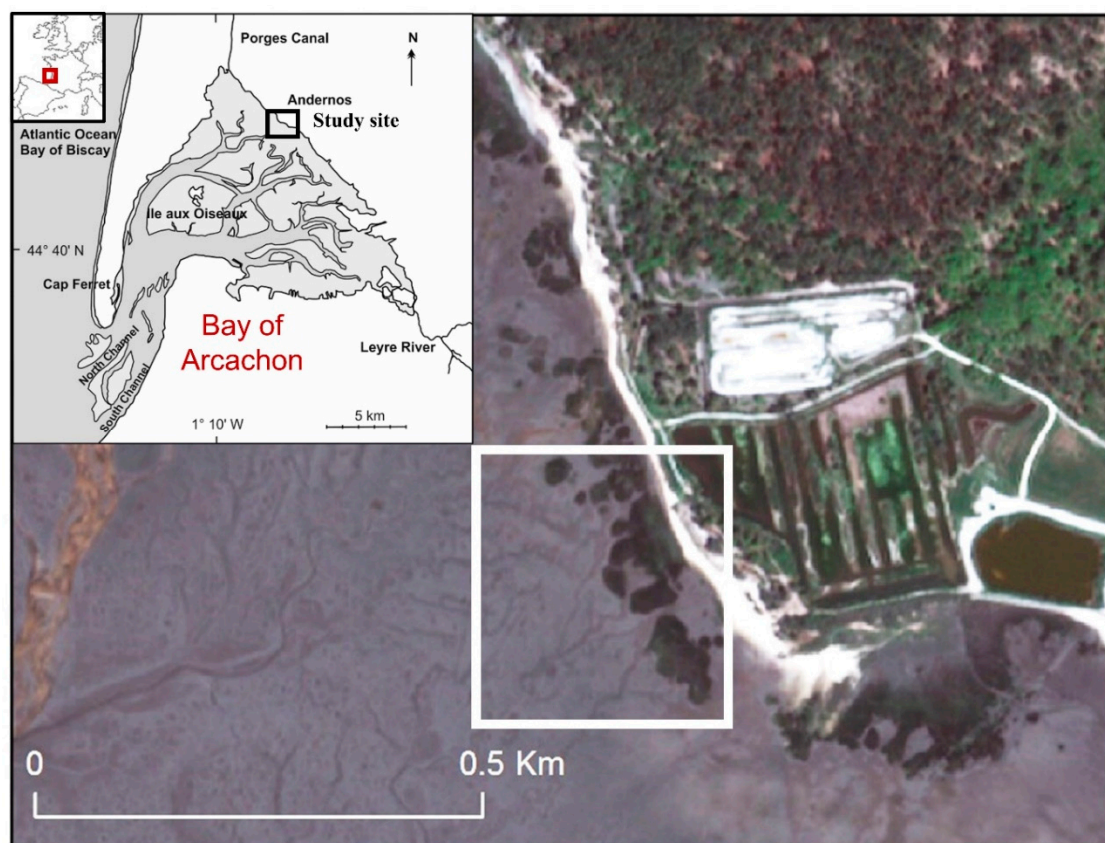
For these reasons, it is essential to select the most suitable satellite on the basis of instrumental characteristics. Especially, remotely sensed multispectral satellite missions can provide data with significantly different temporal, spatial and spectral resolutions [25,29]. The selection of one resolution over the other needs to be weighted according to the objectives, as current orbiting sensors cannot yet provide simultaneous high temporal, spectral and spatial resolutions [30]. For instance, Belluco et al. [15] compared multispectral and hyperspectral remote sensing data efficiency in mapping salt marsh vegetation in the Venice lagoon (Italy). They showed that spatial resolution affected the pixel classification accuracy in a much more important way than spectral resolution and that hyperspectral data can contain largely redundant information. Consequently, they suggested that, for such studies, preference should be given to spatial, rather than spectral, resolution. However, a possible way to overcome these limitations is through the combination of images from sensors, providing different spatial and spectral products by the application of pan-sharpening techniques [31,32]. The application of such techniques enables one to simultaneously take advantage of panchromatic (higher spatial resolution) and multispectral (higher spectral resolution) images. The identification and differentiation of vegetation species is commonly based on a similarity in pixel clustering, using supervised or unsupervised methods [10,15,21,28,33]. Better results are most frequently obtained using supervised classification techniques [34]. However, in the case of muddy coastal zones, to achieve good results, these methods may require extensive and impracticable ground truth verifications.

Even with the current advances in remote sensing products and techniques, the differentiation of individual intertidal species, an important aspect in the assessment of biological invasions, is still a difficult task [10] and usually comprises large errors and confusion with other features. In this study, we aim to assess the potential of multispectral images, acquired by the Pléiades-1 satellite constellation, in order to discriminate the invasive cordgrass, *Spartina anglica*, from the remaining marsh vegetation in the Bay of Arcachon (SW Atlantic coast of France). The evaluation exercise is based on NDVI

maps and the use of pixel classification methods—either supervised (Random Forests) or optimized unsupervised (simulated annealing) approaches—applied to Pléiades images, which were acquired in different seasons. Any advances in the accurate identification of the different salt marsh structures will enable a better understanding of the mechanisms and extent of colonization by invasive species and allow for the monitoring of its evolution, facilitating an early intervention if needed.

## 2. Study Site

The Bay of Arcachon is located in the South-western French Atlantic coast (Figure 1). This coastal lagoon is separated from the open ocean by the Cap Ferret sand spit. Its main flow entrance is divided into two channels, with sandy banks and shoals between them [35]. The presence of a mouth bar and inter-channel banks limits the internal propagation of external ocean waves. Therefore, inside the lagoon, waves are mainly wind generated and fetch limited, especially by the presence of the “Ile aux Oiseaux”. Wind speed and wind direction vary seasonally; they are variable and weak during summer and mostly westerly or northerly in winter, reaching speeds  $> 10$  m/s. Tides are semidiurnal, ranging from 0.8 m during neap tides to 4.5 m during spring tides [36], and the high tide surface can reach an area of  $174 \text{ km}^2$ , mainly composed of a network of narrow channels, which is reduced to  $40\text{--}50 \text{ km}^2$  at low tide [37]. The main source of freshwater is the Leyre river in the South-east, and the Porge Canal in the North. The total freshwater input represents less than 1% of the tidal prism [37].



**Figure 1.** Location of the Andernos' saltmarshes (white rectangle) in the study site (Bay of Arcachon, SW France).

For this study, we chose to consider a study area located on the intertidal zone at Andernos (Figure 1), on the north-eastern side of the Bay. The particularity of the marsh in this zone is that, even though it presents a stable niche of native vegetation, there is a significant presence of the exotic *Spartina* in small random patches. This is representative of an initial stage of the invasion and is an ideal scenario for our objective of identifying this species from its early stage of territory occupation.

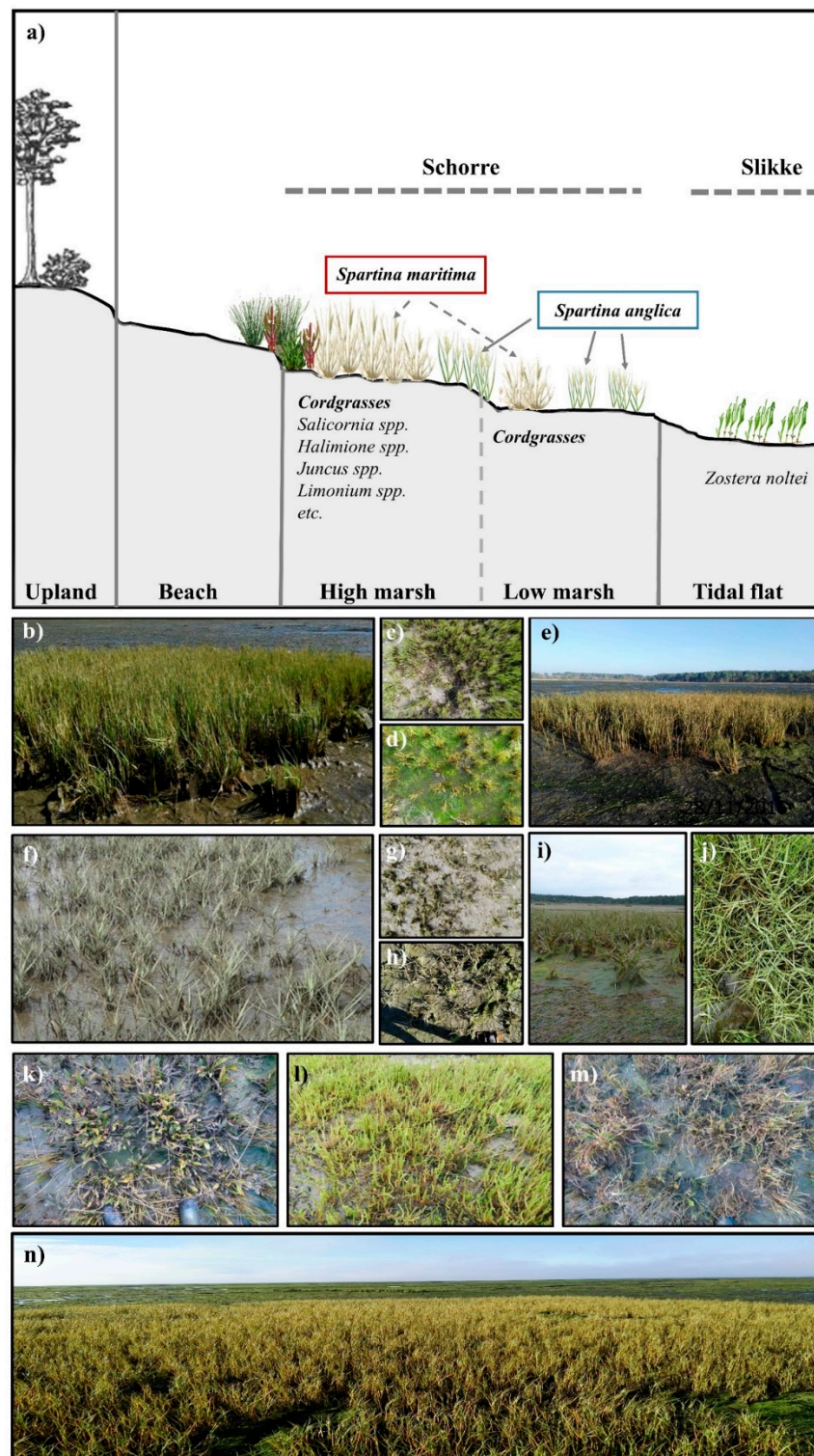


### Vegetation in the Bay of Arcachon

In the Bay of Arcachon, low elevations of the tidal flat (slikke) are mainly colonized by the seagrass, *Zostera noltei*, whereas the margins of the lagoon (schorre) are occupied by typical salt marsh vegetation (Figure 2a), principally *Spartina* sp. (*Spartina maritima*—Figure 2b–e and *Spartina anglica*—Figure 2f–j). The arrival of the invasive species, *Spartina anglica*, in the 1980s [38] provoked concern regarding threats to local species diversity and, especially, the eventual replacement of the native *Spartina* (*Spartina maritima*) by its exotic congener. Even though *Spartinas* constitute the dominant vegetation type in the marsh zone, there are many other species, such as *Salicornia* spp., *Juncus gerardii*, *Limonium vulgare*, *Halimione portucaloides*, and *Puccinellia maritima* [39,40] (Figure 2k–m). Usually, there is a well-defined separation between different vegetation species, but different degrees of mixture, as well as different degrees of density within the same type of vegetation, can also occur.

More than other marsh species, the invasive *Spartina anglica* has the particular ability to spread to offshore positions within the tidal flat, at the inner side of the lagoon. For this reason, the vegetated inner tidal flat zone was included, with the intention of identifying the isolated *Spartina anglica* patches that might occur in this zone.

Seasonal differences in the intertidal vegetation's development and phenology can help to determine their identification and discrimination using remotely sensed images [22,27]. Notably, *Spartina maritima* is a species known for its continuous growth and absence of significant seasonal die-back [41]. In the Bay of Arcachon, this was verified by Proença et al. [42], who estimated a very low productivity for this species at different intertidal levels. On the contrary, the congener *Spartina anglica* presented a strong aerial productivity of aerial biomass, which means that it suffers from a strong die-back during winter, and it completely recovers during the growing season, particularly during summer, due to its exploitative growth strategy, which is better than that of the native. An important difference concerning the phenology of growth is also observable, with a maximum of growth during spring for the native and during summer for the exotics (Appendix A). Additionally, the cordgrasses seem to present some sensitivity both to continuously high and continuously low temperatures, expressed as a color change to yellow/brownish shades during summer and winter seasons, respectively. The seagrass, *Zostera noltei*, was also found to present a pronounced seasonality. Auby and Labourg [43] found a minimum aboveground biomass for this species between November and February and minimum shoot lengths in springtime. The maximum aboveground biomass was measured between June and August, but high values of shoot length were found during Fall. Concerning algae, several species can be found in the Bay at different times of the year [44]. According to these authors, in the inner parts of the Bay, there is a strong presence of the green alga, *Monostroma obscurum*, that tends to decline during the period between March and September. However, they found that a clear seasonal trend is difficult to predict.



**Figure 2.** Characterization of vegetation in the Bay of Arcachon. (a) Schematic representation of the typical distribution of intertidal vegetation along the tidal gradient; (b) dense green meadow of *Spartina maritima*; (c) transition from a dense to a sparse *Spartina maritima* meadow; (d) *Spartina maritima* with homogenous seaweed (*Ulva*) coverage; (e) brownish dense meadow of *Spartina maritima*; (f) sparse green meadow of *Spartina anglica*; (g) sparse withered meadow of *Spartina anglica*; (h,i) *Spartina anglica* with thick algae coverage; (j) dense green meadow of *Spartina anglica*; (k) *Halimione*; (l) *Salicornia*; (m) mix of diverse vegetation; and (n) dense *Spartina maritima* meadow with vegetated tidal flat, both due to well-developed *Zostera noltei* meadows and a strong presence of algae deposits in the background.

### 3. Datasets and Methods

In this study, we used five high-resolution multispectral (MS) images, acquired by the Pléiades-1 satellite constellation, aerial and drone photographs, centered on the study area, Global Navigation Satellite Systems (GNSS) data, collected as ground truth validation, radiometric measurements of the features likely to appear in the classifications and georeferenced photographs.

#### 3.1. Aerial Photographs

The aerial photograph dataset was obtained from French National Institute for Geographic and Forestry Information (IGN) database, and it comprised 41 orthorectified images, taken between 1934 and 2004, with a spatial resolution ranging from 0.10 to 0.85 m. From this dataset, 31 photographs were selected, based on visual evaluation, for their quality and potential for exploitation. They were then georeferenced. A subsection of the study zone was then extracted, and polygons of the identifiable *Spartina* meadows were obtained, distinguishing between the two species based on the GNSS data and georeferenced ground photographs. The number of identified *Spartina* patches (polygons) is variable, depending on the year and quality of the photograph. In order to consider the error associated with the visual determination of the *Spartina* meadows' limits, three replicates of polygons were drawn for each patch. We then used the polygon surface of the three replicates to estimate the mean surface and standard deviation error of each patch.

The most recent aerial photograph was taken during a drone flight that was performed on 21 June 2016 over the study zone. We used a DJI Phantom 2 drone, equipped with a GoPro Hero 4 Black Edition, mounted on a DJI Zenmuse H3-3D gimbal to counterbalance unwanted camera rotations and absorb vibrations. The flight was performed at a very low altitude, 30 m, in order to obtain high-resolution images. Ground control points were taken over the study area and georeferenced using a GNSS system. The image dataset was aligned by a structure-from-motion algorithm through Agisoft Photoscan software, from which we obtained a 3D model that was optimized and georeferenced using the ground control points. Finally, a high-resolution (5 cm) orthophotography was extracted from the 3D-model. This high-resolution orthophotography was used both as a reference image and ground truth for the validation of feature identification in the satellite images.

#### 3.2. GNSS Data

A field campaign was carried out on 26 October 2016 to determine the extent of the difference between plant species present in the study site using a differential Global Navigation Satellite Systems (DGNSS) technique. Two GNSS stations, composed of Leica GR25 receivers and AR10 antennae, were installed, one on the shore, as a base station, and a second one, mobile, carried in a backpack. The maximum distance between the two stations never exceeded 300 m during the field campaign. The GNSS station operated at multi-frequencies (L1, L2, L5) on multi-constellation signals. They were acquiring GNSS (GPS and GLONASS) data at a sampling rate of 1 Hz.

The RTK open-source program package (version 2.4.2) [45,46] was used to process the GNSS raw data. This freeware is available at: <http://www.rtklib.com/>. The satellite coordinate product provided the GNSS orbit and clock offset data used in this study, which were made available by the International GNSS Service (IGS) at <ftp://cddis.gsfc.nasa.gov/gps/products/>. We also used the Antenna Exchange Format (ANTEX) file (igs08\_www.atx), made available by the International GNSS Service (IGS—[https://igs.cb.jpl.nasa.gov/igs\\_cb/station/general/igs08.atx](https://igs.cb.jpl.nasa.gov/igs_cb/station/general/igs08.atx)), which provides a precise and consistent set of phase center offset (PCO) and variation (PCV) values for both satellites and receivers' antennae, taking into account these corrections. As the two stations were continuously acquiring data at both the L1 and L2 frequency bands, GNSS data were processed in ionosphere-free mode, with tropospheric corrections from the Saastamoinen model, and solid Earth and pole tides, followed by ocean tide loading, were applied [47].

### 3.3. Radiometric Measurements

On 21 July 2016, a field campaign was conducted in the study area to collect radiometric measurements, associated with the different types of substrate. Hyperspectral measurements were performed in the 400–900 nm spectral range (every 3 nanometres) from two radiometrically-calibrated TriOS-RAMSES sensors. The radiance sensor pointed downward to measure the upward signal of the substrate ( $L_u(\lambda)$ ,  $W \cdot m^{-2} \cdot sr^{-1} \cdot nm^{-1}$ ), while the irradiance sensor pointed upward to measure the downward irradiance ( $E_d(\lambda)$ ,  $W \cdot m^{-2} \cdot nm^{-1}$ ). Radiance and irradiance measurements were performed simultaneously, as recommended in Reference [48]. The remote sensing reflectance ( $R_{rs}(\lambda)$ ,  $sr^{-1}$ ) was then calculated as the ratio of  $L_u(\lambda)$  to  $E_d(\lambda)$ . Note that, for brevity, we do not include the reference to the spectral dependency in the following text. Several features were chosen according to the different aspects of the vegetation of interest found within the study zone. For each feature, a run of 10 radiometric measurements was performed for three different targets in order to compute the average spectrum of  $R_{rs}$ .

Finally, in order to compare the field data with the Pléiades data, the in situ  $R_{rs}$  spectra were spectrally transformed using the spectral response function (SRF) of the Pléiades-1A and -1B bands in order to make them compatible with the spectral characteristics of the sensors. The SRF-corrected  $R_{rs}$  spectra ( $R_{rs\_SRF}$ ) were computed as follows:

$$R_{rs\_SRF}(\lambda_0) = \frac{\int R_{rs}(\lambda) SRF(\lambda) d\lambda}{\int SRF(\lambda) d\lambda} \quad (1)$$

where  $\lambda_0$  represents the central wavelength of the different MS bands of Pléiades.

### 3.4. High Resolution Pléiades Images

Standard orthorectified Pléiades images, acquired on five dates (25 April 2013, 3 August 2016, 6 October 2016, 24 Mai 2017 and 7 October 2017—Table 1), were used to determine the vegetation type in the study area. The Pléiades satellite constellation (Pléiades-1A was launched on 17/12/2011 and Pléiades-1B on 02/12/2012) acquired PAN (wavelength in the 470–830 nm range) images, with a ground sampling distance of 0.7 m in the nadir direction, which were resampled at 0.5 m and in four MS bands—blue (B: 430–550 nm), green (G: 500–620 nm), red (R: 590–710 nm), and Near-Infrared (NIR: 790–940 nm)—at a spatial resolution of 2 m and over a swath width of 20 km at nadir.

**Table 1.** Pléiades satellite data set information.

Satellite	Acquisition Date	Season	Acquisition Time (UTC)	Time of Low Tide (UTC)
Pléiades-1A	25/04/2013	Spring	11h15	12h04
Pléiades-1A	03/08/2016	Summer	11h15	12h45
Pléiades-1A	06/10/2016	Autumn	11h23	14h59
Pléiades-1B	24/05/2017	Spring	11h04	11h06
Pléiades-1A	07/10/2017	Autumn	11h08	13h27

### 3.5. Pre-processing of the Pléiades Images

All images were not provided in the same coordinate system. Therefore, all images were first re-projected in the Universal Transverse Mercator (UTM), Zone 30 North—World Geodetic System 1984 (WGS84). Radiometric calibration and atmospheric correction were then applied to each image in order to convert the Level 1 (L-1) images, provided in digital counts (DC), to images in the surface reflectance values. Then, the surface reflectance was divided by  $\pi$  to obtain  $R_{rs}$ . Atmospheric corrections were performed using the optical calibration module from OTB—Monteverdi software [49], converting all images to the top of the canopy reflectance. Both sun and viewing angles (elevation and azimuth), as well as the calibration coefficients (gain/biases and solar illuminations), were obtained from the



images' metadata files. The applied aerosol model was chosen, depending on the corresponding season of each image, following the methods in Reference [50]. The atmospheric pressure, aerosol optical thickness and ozone and water content values were obtained from NASA's Aerosol Robotic Network (AERONET) for the Arcachon station at the corresponding acquisition time of the satellite image. The atmospheric corrections in the blue band (B) present the highest residual errors. For this reason, and because the B-band does not provide useful additional information in the identification of vegetation, this band was removed from all images.

For each image, we computed the Normalized Vegetation Index (NDVI, [51]) as:

$$NDVI = \frac{R_{rs}(\lambda_{NIR}) - R_{rs}(\lambda_R)}{R_{rs}(\lambda_{NIR}) + R_{rs}(\lambda_R)} \quad (2)$$

Other indexes proposed in the literature for assessment of vegetation cover were tested, but they did not present significant differences relative to the NDVI. The NDVIs were also estimated for the field reflectance data, and the values obtained for each species were compared to the ones estimated from the satellite images. Based on the analysis of the NDVI maps, for each image, we performed a prior assessment of their capability of identifying the different types of habitats and species using classification methods.

### 3.6. Pixel-based Classification

To attempt to identify the two types of *Spartina* and differentiate them from each other, we tested pixel classification algorithms, using both unsupervised and supervised approaches.

Unsupervised methods provide the advantage of being more flexible [52], and this approach was considered with a view to extending the vegetation mapping to the entire Bay. Unsupervised approaches recognize patterns of spectral response using cluster analysis techniques. The resulting classification must be analyzed to regroup and label the classes using ground truth information. Even if there is a perspective of the long-term monitoring of salt marshes of the entire Bay, in this work, we will only focus on the results for the study zone.

Pixel-based unsupervised classification was performed using the Simulated Annealing Algorithm [53], a probabilistic method to find the class centers, which minimizes the cumulated distance from every pixel to their center of class in the spectral space. This is a non-linear algorithm that, with the appropriate parameters, provides a converged solution to the global optimized minimum. To improve the search for the best solution, a start temperature (a control parameter that determines the range of the initial search for the solution) is given, and its decrease, with the number of iterations, corresponds to a decrease in the probability of the acceptance of a worse solution than that previously found.

For the supervised classification approach, we considered different supervised classifiers, where preliminary tests showed that all techniques provided similar results. For this reason, we further proceeded with the Random Forests (RF) classifier [54], which is indicated in the literature as a suitable algorithm, when using a high number of variables and small training sets [4,10]. When applying the RF classifier, the classification map is accompanied by an accuracy map, which contains the indicator of the confidence degree of the classification. More precisely, the RF classifier is composed of a set of different individual base classifiers (decision trees). Each tree makes a decision, and the final decision corresponds to the majority vote. The degree of confidence is obtained as the percentage of the individual classifiers that provide a decision equivalent to the final one.

Pixel classification was performed on the three-band MS images. Supervised classification was performed using MATLAB<sup>®</sup> on a standard personal computer, an Intel<sup>®</sup> Core™ i5-4690 processor at 3.50 GHz, with 8 Go memory. For images with dimensions of 281 × 300 at a 2 m resolution, the algorithm's computation time was under 5 minutes. As for the unsupervised classification, the simulated annealing algorithm was written in Fortran. It ran on a bi-socket server using AMD Opteron

processors at 2.30 GHz, and it was parallelized on 24 cores using the OpenMP library. The longest computation was approximately 10 minutes.

All image processing steps are summarized in Figure 3.

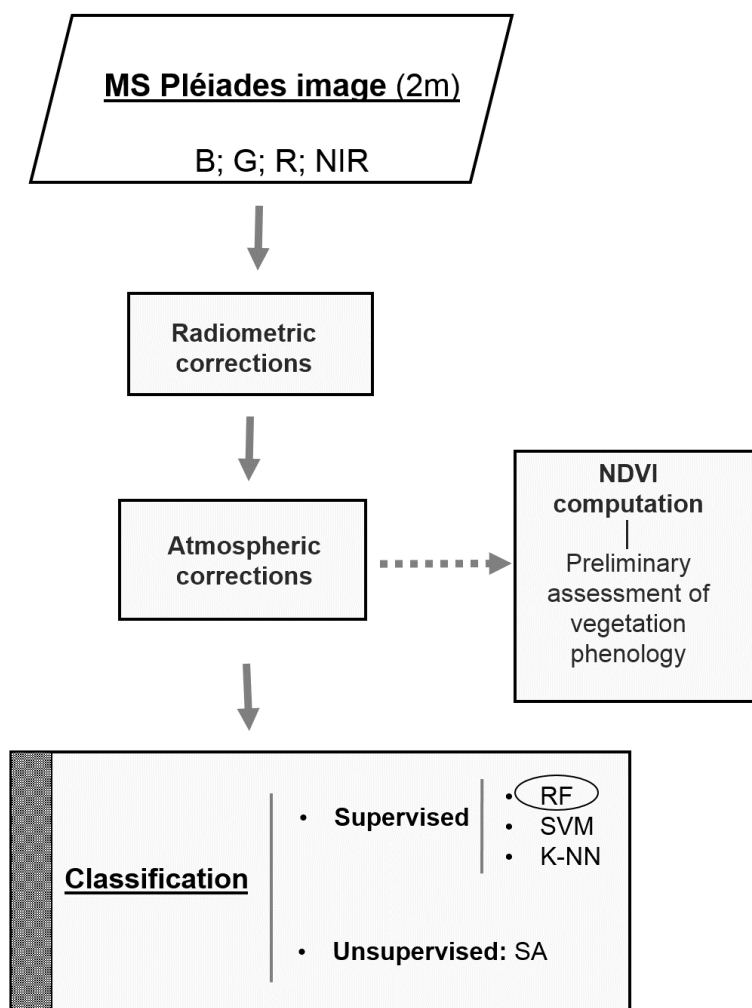
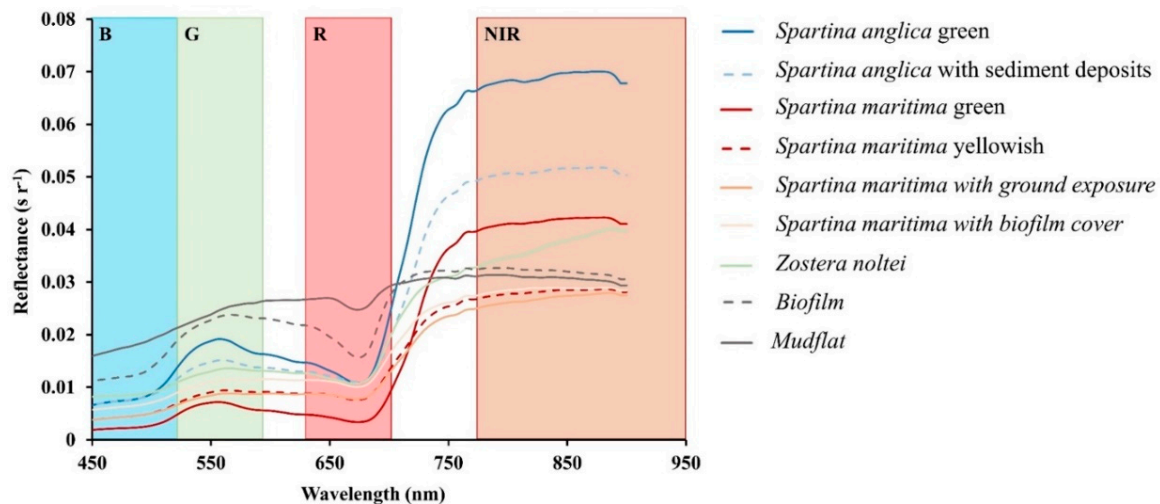


Figure 3. Flow chart of the image processing steps.

## 4. Results and Discussion

### 4.1. Spectral Signature of Vegetated Structures

Figure 4 shows the mean  $R_{rs}$  spectra of different characteristic substrate types, collected at the study site on 21 July 2016. The spectral signature of the two *Spartina* species is very clearly distinguishable from other benthic habitat types. This difference is particularly obvious for dense and green *Spartina* meadows, without biofilm or sediment. Their  $R_{rs}$  spectra display a narrow peak center at around 550 nm and a sharp increase in the signal between the red and NIR bands, which is associated with high  $R_{rs}$  values over 780 nm. Further, *Spartina anglica* and *Spartina maritima* are also spectrally distinguishable. In green wavelengths, *Spartina anglica* shows a more pronounced peak than *Spartina maritima*, while in the red and NIR bands, *Spartina anglica* shows higher  $R_{rs}$  values than *Spartina maritima*. For instance, the  $R_{rs}$  value is  $0.013 \text{ sr}^{-1}$  and  $0.004 \text{ sr}^{-1}$  at 650 nm, and  $0.071 \text{ sr}^{-1}$ , and  $0.042 \text{ sr}^{-1}$  at 840 nm, respectively (Table 2). The NDVI, obtained from in situ  $R_{rs}$ , also indicates a significant difference between *Spartina anglica* and *Spartina maritima*, with a value of  $0.69 \pm 0.02$  and  $0.83 \pm 0.03$ , respectively.



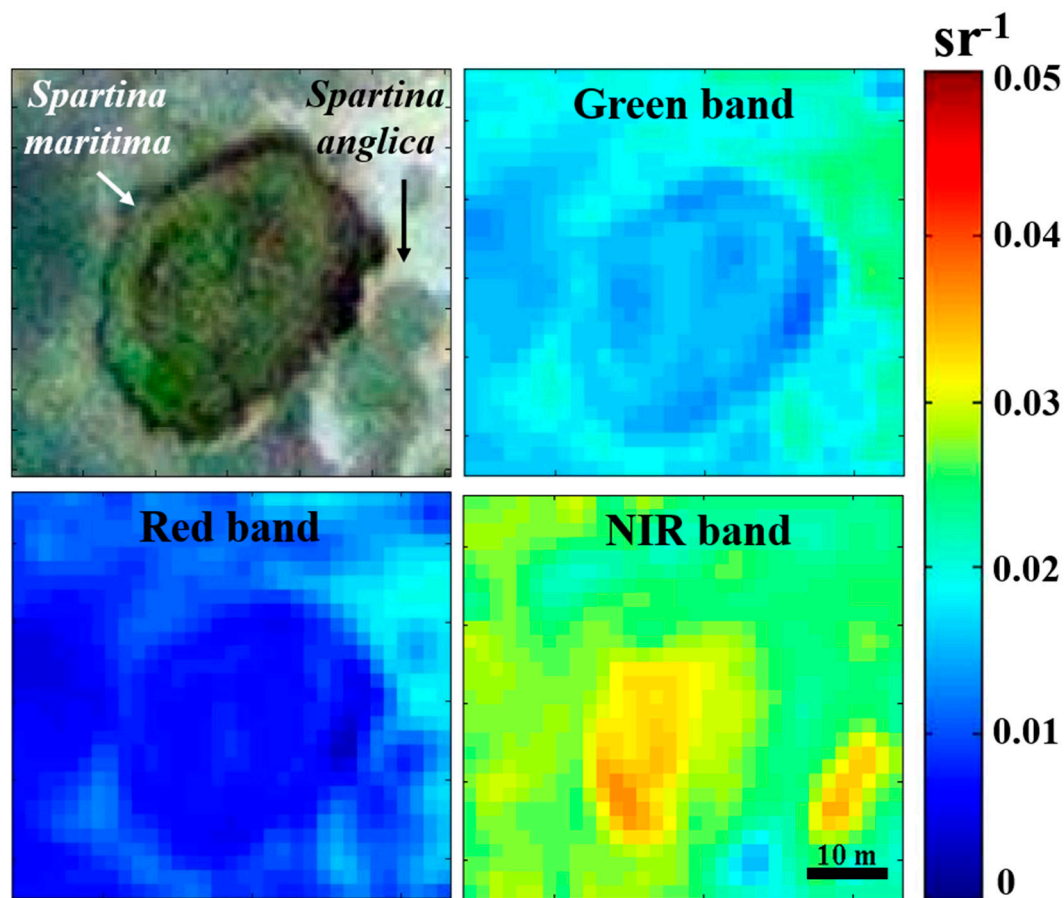
**Figure 4.** Mean field remote sensing reflectance ( $\text{sr}^{-1}$ ) spectra of different characteristic substrate types, collected in the study site on 21 July 2016. Colored spectral bands are associated with the blue (B), green (G), red (R), and near-infrared (NIR) channels of the Pléiades-1 satellite images.

**Table 2.** Mean (standard deviation) values of field hyperspectral, field SRF-corrected Pléiades, and Pléiades remote sensing reflectance ( $\text{sr}^{-1}$ ) in the Green, Red, and NIR bands, and in the NDVI pseudo-band for the same dense and green *Spartina anglica* and *Spartina maritima* patches (see Figure 6). Field data were acquired on 21 July 2016, and the Pléiades image was acquired on 3 August 2016.

Spectral Band (nm)	Field $R_{rs}$ ( $\text{sr}^{-1}$ )		Field $R_{rs\_SRF}$ ( $\text{sr}^{-1}$ )		Pléiades $R_{rs}$ ( $\text{sr}^{-1}$ )		
	<i>S. Maritima</i> .	<i>S. Anglica</i>	<i>S. Maritima</i>	<i>S. Anglica</i>	<i>S. Maritima</i> .	<i>S. Anglica</i>	
Green	560	$0.007 \pm 0.002$	$0.019 \pm 0.003$	-	-	-	-
	500–620	-	-	$0.006 \pm 0.004$	$0.017 \pm 0.004$	$0.015 \pm 0.001$	$0.018 \pm 0.001$
Red	650	$0.004 \pm 0.002$	$0.013 \pm 0.004$	-	-	-	-
	590–710	-	-	$0.005 \pm 0.006$	$0.014 \pm 0.005$	$0.007 \pm 0.001$	$0.009 \pm 0.001$
NIR	840	$0.042 \pm 0.008$	$0.071 \pm 0.007$	-	-	-	-
	740–940	-	-	$0.039 \pm 0.009$	$0.064 \pm 0.010$	$0.029 \pm 0.003$	$0.034 \pm 0.003$
NDVI	$\frac{NIR-Red}{NIR+Red}$	$0.83 \pm 0.03$	$0.69 \pm 0.02$	$0.77 \pm 0.05$	$0.64 \pm 0.04$	$0.60 \pm 0.074$	$0.57 \pm 0.061$

However, field measurements show a high variability of the spectral signatures of both *Spartina* species, depending on phenology, vegetation cover, biofilm and sediment deposition. For instance, the algae deposition on *Spartina maritima* causes a significant decrease in NDVI (0.54 instead of 0.83) due to an increased signal in the red and a decreased signal in the NIR. On the other hand, the sediment deposition on *Spartina anglica* shows a negligible impact on the radiometric signal in the red, but a strong impact in the NIR, which is responsible for a moderate decrease in NDVI (from 0.69 to 0.61).

Figure 5 provides the  $R_{rs}$  values in the green, red and NIR channels for the MS Pléiades images, acquired on 3 August 2016. The images zoom in on the *Spartina anglica* and *maritima* meadows, sampled during the field campaign conducted on 21 July 2016. MS images exhibit a high intra-patch variability of their spectral signatures, as previously observed using field observations. This variability is directly related to the spatial heterogeneity of the ground cover percentage in the meadows of *Spartina* species. In order to compare field and satellite remote sensing reflectances, we computed the field SRF-corrected  $R_{rs}$  from Eq.1 (Table 2). A general smoothing effect on  $R_{rs\_SRF}$  due to the wide Pléiades spectral bands can be noted. However, small differences were recorded between  $R_{rs\_SRF}$  and  $R_{rs}$ . The lowest and highest relative differences were found in the red band for *Spartina anglica* (7%) and *Spartina maritima* (22%), respectively.



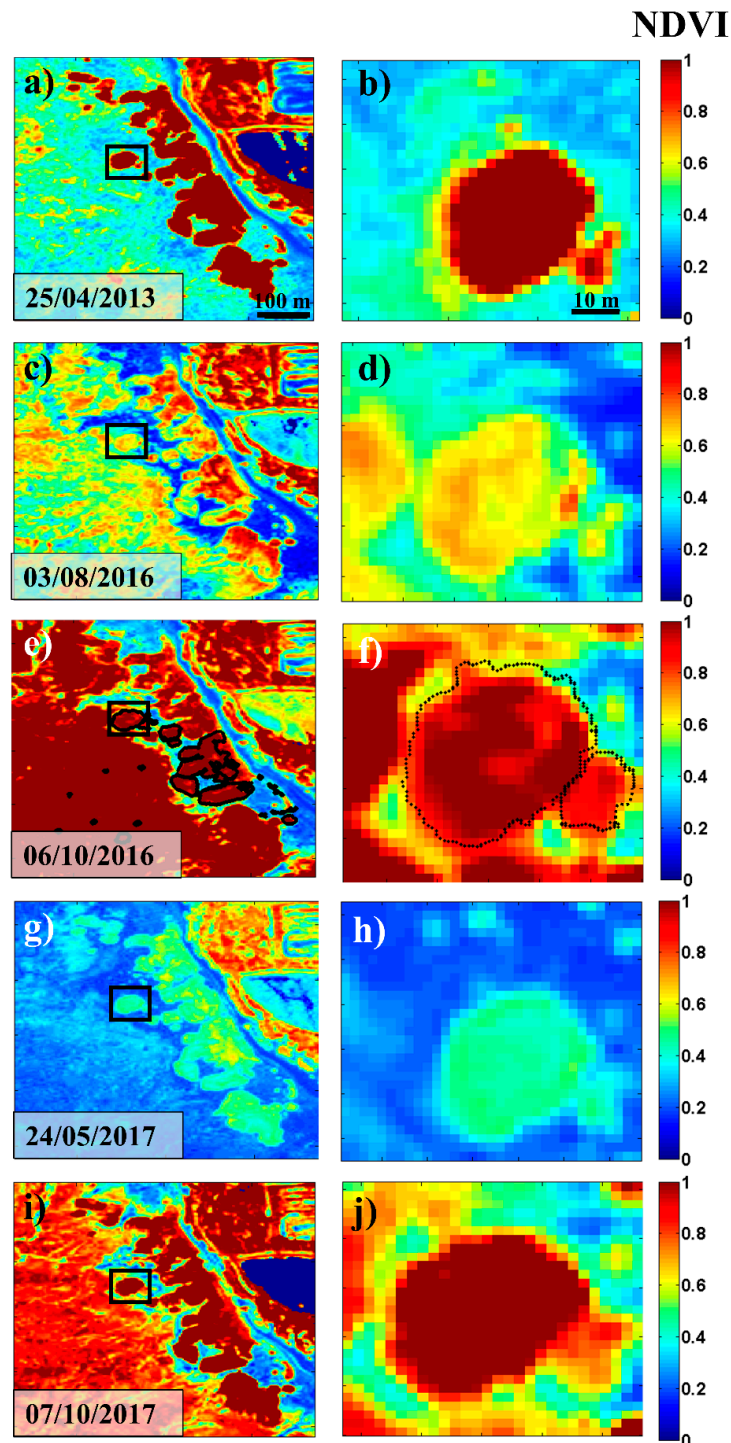
**Figure 5.** Remote sensing reflectance ( $\text{sr}^{-1}$ ) values in the green (500–620 nm), red (590–710 nm) and NIR (740–940 nm) bands for the multi-spectral Pléiades images, acquired on 3 August 2016. The images zoom in on the well-identified *Spartina anglica* and *maritima* meadows (see red and blue boxes on the image of 2016, Figure 4).

A comparison of the satellite and field SRF-corrected  $R_{\text{rs}}$  shows that they exhibit a similar general spectral behavior, but with significant differences in the magnitude and spectral shape. For instance, the NDVI values associated with *Spartina maritima* were 0.77 and 0.60 for  $R_{\text{rs\_SRF}}$  and Pleiades  $R_{\text{rs}}$ , respectively. Further, it is worth noting that the difference between the *Spartina maritima* and *Spartina anglica* NDVI values is significantly lower in the satellite data (0.03) than in the field data (0.13). This reduced capability of discriminating *Spartina maritima* from *Spartina anglica* using satellite observations may be related to the scaling factor [26]. Due to the small scale of the *Spartina* meadow and high spatial heterogeneity of the vegetation cover, the lower the spatial resolution, the lower the radiative contribution of *Spartina* to the per-pixel  $R_{\text{rs}}$  and the higher the contribution of the soil background signal.

Maps of the NDVI were generated for the five different dates of the Pléiades images (Figure 6). This index highlights strong seasonal changes, which appear to be primarily related to species phenology and the ephemeral presence of itinerant biological structures (e.g., the presence of biofilm and algae). The global high marsh zone can be clearly identified from the other types of habitat, particularly during spring (April and May), when the NDVIs of *Spartina* sp. vegetation show particularly higher values than sand and sediment. The results also highlight both seasonal and inter-annual variations of the NDVI signal for the *Spartina* vegetation. The NDVI does not, by itself, seem to be sufficient to differentiate the two *Spartina* species, as they present values of the same order of magnitude (Table 2). However, due to a small phase shift in their respective seasonal development, which generates considerable differences in aerial biomass density and color (Figure 2b–j), autumn appears as the best period to discriminate the two species, where average NDVI values for *Spartina anglica* and *Spartina maritima* are 0.8 and 0.9,



respectively. Previous studies have already shown the advantages of a temporal assessment of marsh species identification using this index [55,56]. For instance, Sun et al. [55], considering the monthly NDVI of multiple marsh species in the middle coast of Jiangsu, found important temporal windows that made the species distinguishable.



**Figure 6.** Comparison of the NDVI computed from the Pléiades images for the five considered dates, (a,b) 25 April 2013, (c,d) 3 August 2016, (e,f) 6 October 2016, (g,h) 24 May 2017, and (I,j) 7 October 2017. For each date, the image zooms in on the well-identified, small and invasive *Spartina anglica* and large native *maritima* meadows (right panel—see legend in Figure 5). Black contours on the image acquired on 6 October 2016 correspond to the field ground truth GNSS vegetation contours.

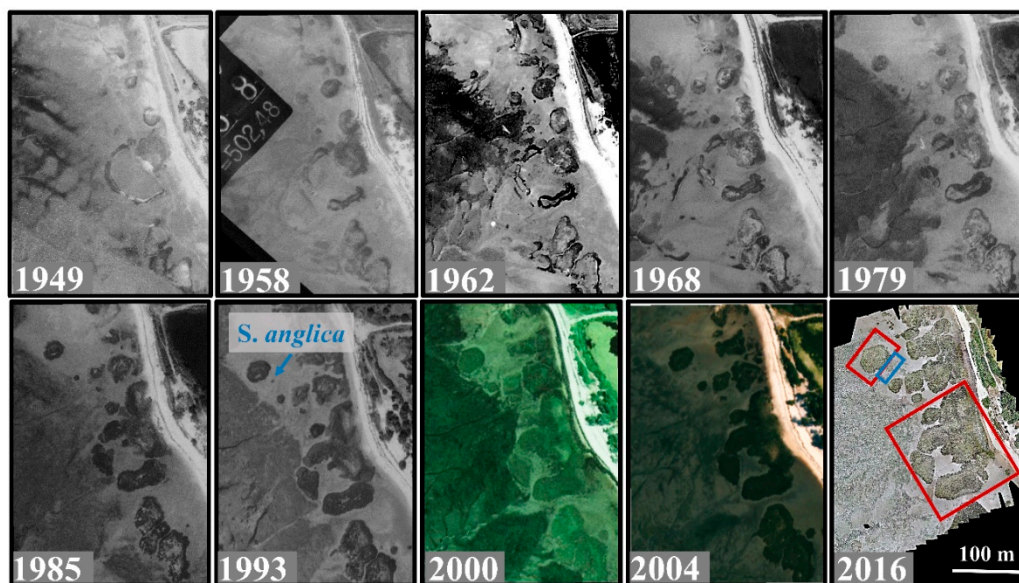
Further, relevant information regarding the general intertidal vegetation presence during the growing season can be withdrawn from this parameter. In particular, remarkable differences appear between both spring images (April 2013 and May 2017). The NDVI values for both intertidal and supratidal vegetation are above 0.8 for the first date and much lower for the second one, ranging from 0.3 to 0.6. This indicates that potentially significant meteorological differences might have occurred within the four years, affecting the vegetation development, namely, in terms of temperatures and sunlight availability. However, such analysis goes beyond the scope of the present study, and further correlations with meteorological data would need to be conducted. For the image corresponding to the beginning of August 2016, at the peak of summer, NDVI values are no longer at their maximum, which could possibly be related to a particularly hot summer, during which high temperatures were reached. A relative senescence of the vegetation during this period was observed during field verifications, which is probably the reason for the marsh vegetation NDVI values being under 0.8 during this period of the year. Finally, for both fall images (2016 and 2017), not only the marsh vegetation structure shows particularly high NDVI values, but there is also the presence of a large vegetated cover over the tidal flat. This is probably related to the fact that, by this time of the year (October), temperatures have not yet significantly decreased, and vegetation growth is still occurring, for the seagrass in particular [43]. Indeed, it seems that this corresponds to an optimum period for *Zostera noltei* meadows to colonize the intertidal flat. Additionally, field inspections on this date allowed us to verify that this corresponds to a particularly favorable period for algae that considerably cover a large part of the tidal flat surface. Several deposits of such algae were also found to be hooked on to the stiff marsh vegetation, which might also affect its spectral signal (Figure 2d,h,i). It is then important to note that the presence of biological deposits can significantly affect the NDVI of the target marsh vegetation, and eventually, alter the typical values presented by the *Spartina* species.

#### 4.2. Long-Term Evolution of the High Marsh Zone and Ground Truth Data Validation

The long-term temporal evolution of the study area, as viewed through aerial photographs (Figure 7), shows that its marsh surface has been relatively stable, especially since the 1980s, the period from which the high marsh zone presents a configuration similar to what can be observed on the present date. Indeed, the most significant changes occurred between 1949 and 1979, the period of remarkable expansion of the high marsh vegetation, dominated by the European native, *Spartina maritima*.

The main marsh structure (identified by the red square in the 2016 image in Figure 7) presented a growth of 5700 m<sup>2</sup> ( $\pm 85$  m<sup>2</sup>) between 1949 and 2016. The expansion of this patch seems to have progressively increased over time. For instance, its surface was enlarged by 563  $\pm$  124 m<sup>2</sup> between 1985 and 1993, which is more than twice its growth between 1949 and 1958 (236  $\pm$  67 m<sup>2</sup>). Between 2004 and 2016, the patch surface increased by 1613.4 ( $\pm 80$  m<sup>2</sup>).

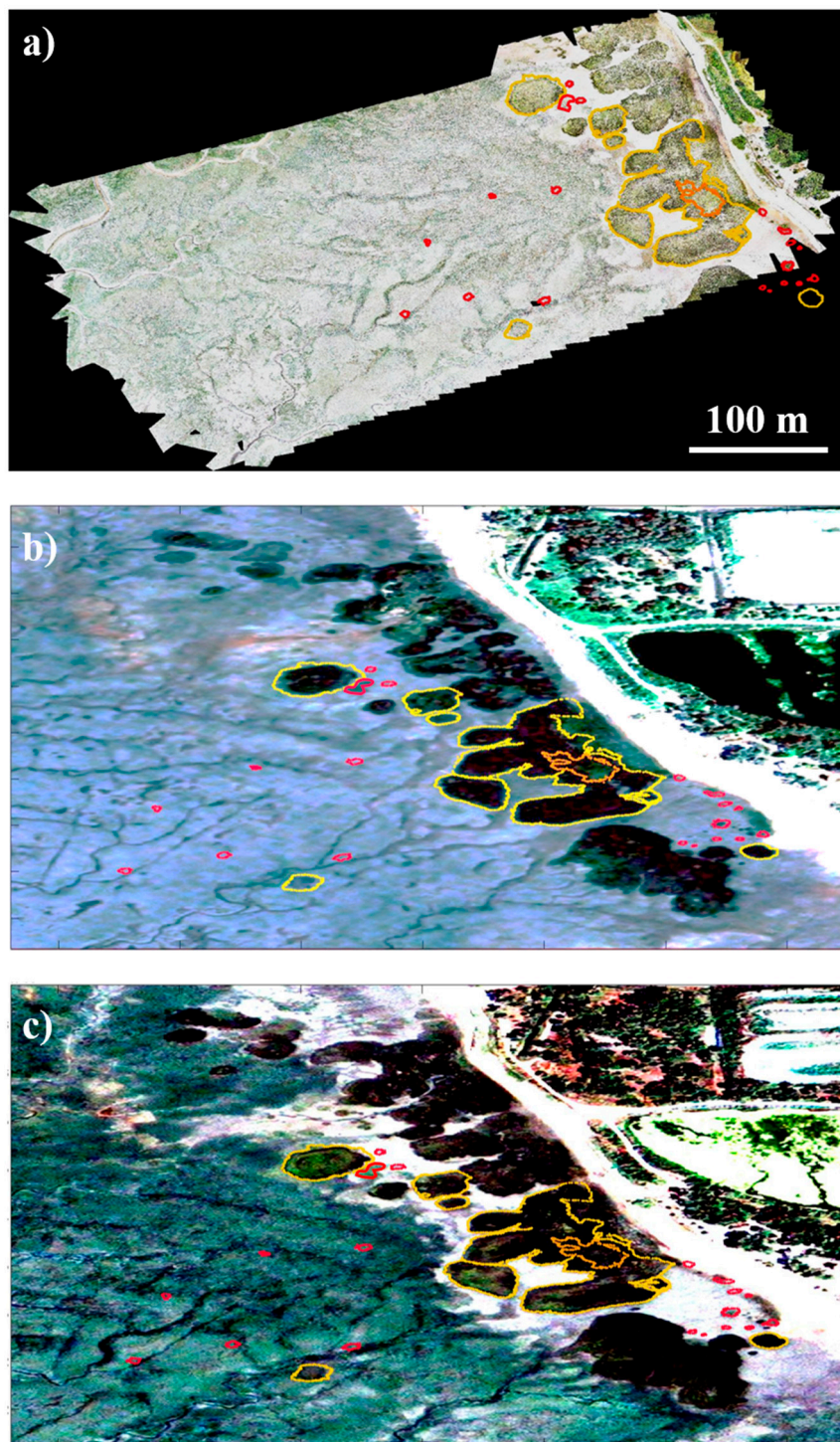
Considering the exotic *Spartina anglica*, although its presence in the Bay of Arcachon dates from the 1980s, within our dataset, the most identifiable *S. anglica* patch in the study area (blue rectangle in 2016 image—Figure 7) has only been visible since 1993. This is the only patch that can be monitored, and it presented a growth of 100  $\pm$  2 m<sup>2</sup> between 1993 and 2016.



**Figure 7.** Salt marsh evolution at the study site of Andernos between 1949 and 2016. Dates up to 2004 correspond to airborne aerial photographs, and the image from 2016 was acquired by drone. Two zones of *Spartina maritima* dominance are indicated by red boxes, and *Spartina anglica* dominance patches are indicated by the blue box in the drone image. The bigger red box corresponds to the patch considered in the text as the main marsh structure. The appearance of the invasive *Spartina* is indicated in the 1993 image by the blue arrow.

Hence, in this area of the Bay of Arcachon, the most significant changes in marsh evolution are associated with vegetation patch growth (occasionally followed by the merging with neighbor patches). This patch growth and subsequent merging is most remarkable for the native *Spartina*. For the exotic *Spartina anglica*, we notice the appearance of new patches that seem to mostly occupy empty niches within the higher marsh zone or over the tidal flat (Figure A1). Therefore, apart from growth, there are no major inter-annual (or even inter-seasonal) changes in patch vegetation dominance. Our ground truth data (drone flight, GNSS data, georeferenced photographs and a regular monitoring of this site from 2015 up to 2018 within the scope of the complementary studies) for patch species identification showed that this is a relatively stable site, and no major changes have recently occurred. This provides a correct validation for the images from 2016 (Figure 8). Comparing these field data with the oldest image from our dataset (2013), a good match is observed with the knowledge of species composition and patch positions from the most recent data. For this reason, we consider that our ground truth data are also valid for the image of April 2013.





**Figure 8.** Overlay of field GNSS marsh vegetation contours (26 October 2016) over (a) the drone image (21 June 2016); (b) the Pléiades image from 25 April 2013; and (c) the Pléiades image from 10 October 2016. Yellow contours correspond to patches dominated by the native *Spartina maritima*, red contours correspond to patches of the invasive *Spartina anglica*, and the orange contour delineates an intrusion zone of other types of vegetation. Image a is displayed in true color, while images b and c correspond to a RGB composite, with independent contrast enhancements to highlight the vegetated features of interest.

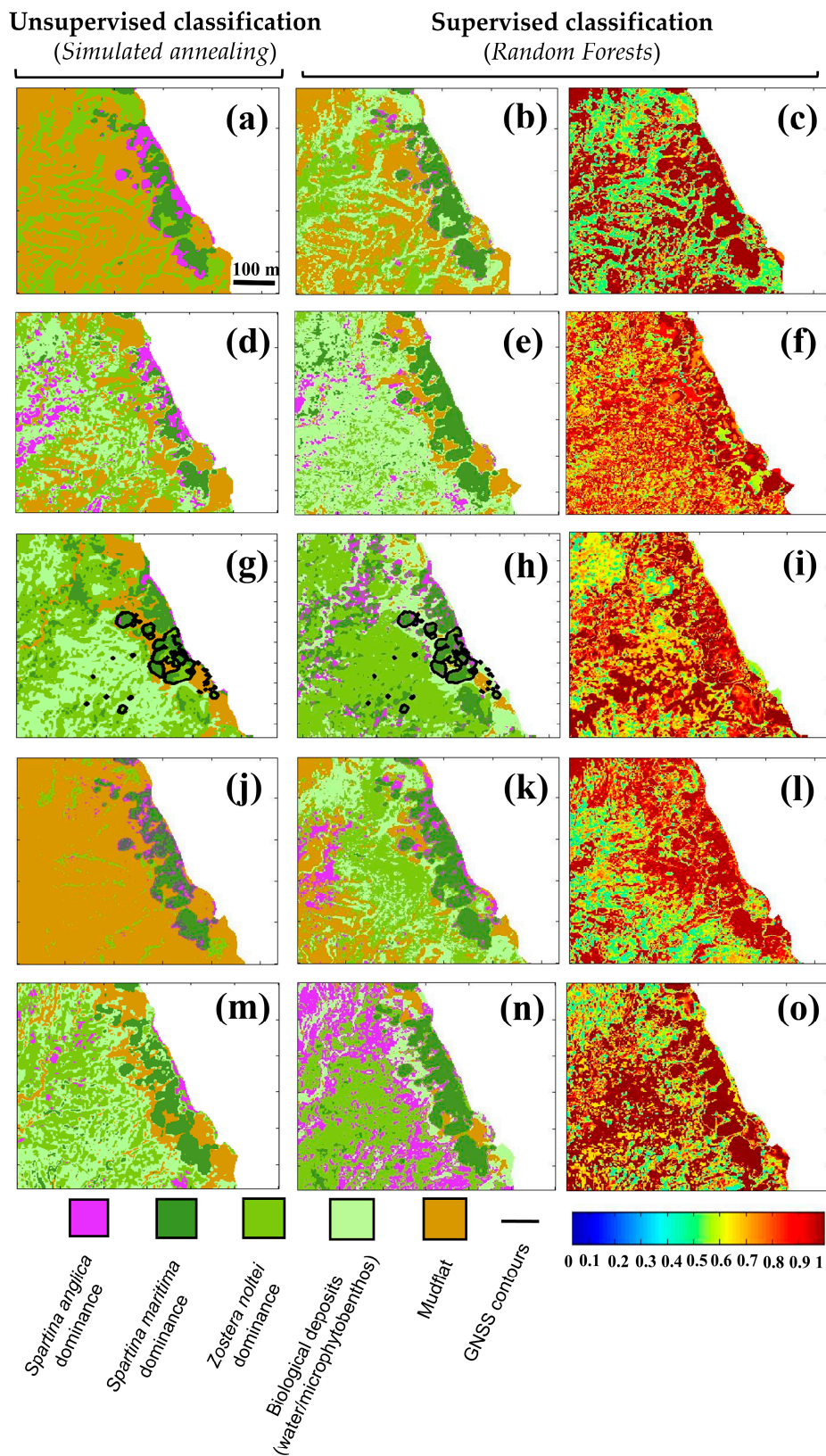


#### 4.3. Pixel Classification Using Unsupervised and Supervised Methods

Several pixel classification algorithms were applied for each of the five dates of MS Pléiades images, with the aim of identifying the dominant marsh species in the Bay of Arcachon, *Spartina maritima* and *Spartina anglica*, and monitor the changes resulting from the invasion of the latter.

Concerning the supervised classification, as previously mentioned, after preliminary tests with several classifiers, we proceeded with Random Forests, both because it is a commonly used classifier, and it provided slightly better results than the other tested classifiers. For all classes, we considered the same number of training zones, maintaining, as much as possible, a balanced number of pixels per training zone, depending on the size of the feature representative of the class. For the image of April 2013, this balance was relatively difficult to achieve, as the presence of the invasive *Spartina* was particularly reduced in the study zone at this date. For the simulated annealing algorithm, since it is an unsupervised method, it is important to note that the algorithm class color attribution is done randomly, and class colors need to be re-assigned by the user in order to achieve an agreement between different season images and a match with the previously considered supervised classification results. Different tests were performed for each image, considering the influence of the algorithm's parameters, number of iterations, start temperature (a parameter associated with the initial range of search for pixel clustering), number of classes and transformation coefficient in order to estimate the position of the class center. Very similar results were obtained for the classifications, with differences under 5% for each class from one run to the other. Field surveys have shown that the meadow vegetation dominance did not change at the considered timescale. Therefore, the alteration of the spectral signatures and consecutive class attribution by the algorithm was mostly influenced by the seasonal appearance of transient biological features or the vegetation's phenology. It is then necessary to perform a post-classification analysis to provide the best color match between images of different seasons.

Both the unsupervised and supervised pixel classifications of the overall images allowed for an accurate identification of the global high marsh zone, including all species. However, single-feature identification (species differentiation) remained difficult, and the degree of accuracy was strongly dependent on the presence of noise induced by episodic events or short-term perturbations that can alter the species spectral signal (Figure 9; Table 3). Such difficulties in the isolation of spectral features due to the presence of water and a high humidity at low marsh levels were also found, in [21], in the realization of supervised classifications of Landsat images. Given the variability of field reflectance for one matching feature (Figure 6), such a result was not completely unexpected, and this was shown by the significant differences between classifications for all dates. We observed that the larger the noise induced by seasonal perturbations, the larger the variability of the classification within the patches, particularly considering the results obtained using the unsupervised classification algorithm.



**Figure 9.** Pixel classification using the unsupervised method, Simulated annealing (left panel), with the supervised method, Random Forests (central panel), and classification accuracy maps for the supervised classification (right panel). (a–c) 25 April 2013, (d–f) 3 August 2016, (g–i) 6 October 2016, (j–l) 24 May 2017, and (m–o) 7 October 2017. Black contours on the image acquired on 6 October 2016 correspond to the field ground truth GNSS vegetation contours. Color bar indicates the confidence level of class attribution in the accuracy maps.

**Table 3.** Accuracy metrics from the supervised Random Forests classification on the five dates of 3-band (G, R and NIR) multi-spectral Pléiades images. Class assignment: C1—*Spartina anglica*, C2—*Spartina maritima*, C3—slikke vegetation dominated by *Zostera*, C4—mudflat, and C5—biological deposits (algae/microphytobenthos).

	April 2013	August 2016	October 2016	May 2016	October 2017
<b>Overall accuracy</b>	0.87	0.66	0.79	0.85	0.56
<b>Kappa index</b>	0.81	0.56	0.72	0.80	0.46
<b>Average accuracy</b>	0.69	0.72	0.79	0.83	0.60
<b>Class accuracy</b>	C1: 0.64	C1: 0.9	C1: 0.72	C1: 0.85	C1: 0.53
	C2: 0.93	C2: 0.96	C2: 0.88	C2: 0.74	C2: 0.78
	C3: 0.97	C3: 0	C3: 0.96	C3: 0.98	C3: 0.39
	C4: 0.88	C4: 1	C4: 0.39	C4: 0.96	C4: 0.35
	C5: 0.037	C5: 0.76	C5: 0.98	C5: 0.64	C5: 0.92
<b>Confusion matrix (in %)</b>	64 0 36 0 0 90 0 0 3 7 72 8 0 0 20 85 2.5 10 2.5 0 53 0 47 0 0	2 93 0 0 5 0 96 0.4 0 3.6 10 88 0 0 1 14 74 11 0 1 6 78 15 0 1	1 0 97 0 2 0 26 0 0 74 0.2 3.8 96 0 0 0.4 0 98 0 1.6 60 0 39 0 1	0 0 0 88 12 0 0 0 100 0 0 0 0 39 61 0.4 0 2.4 96 1.2 5 0 0 36 59	0 0 18 78 4 0 22 2 0 76 1 0 0 1 98 0.5 7 28 0.5 64 0 0 0 8 92

Globally, the *Spartina maritima*-dominated patches were identified well with the supervised classifier but comprised a high variability in class assignment, depending on the density of the meadow and the presence of biological debris with the unsupervised one. Small, scattered patches of the invasive *Spartina anglica* extending over the tidal flat were difficult to identify because of both the variety of interference signals and the small dimensions of the meadows towards the interior of the bay. A comparison of the ground truth of the dominant vegetation, identified through the GNSS contours, acquired on October 2016, and the corresponding classified vegetated features in the Pléiades images provided the rate of correctly classified pixels for the two *Spartina* species, obtained with an unsupervised classifier. Overall, patches of *Spartina maritima* dominance were identified well with the supervised classifier, with a percentage of correctly identified pixels of 74% for the image of May 2017, which increased to 96% for that of August 2016. With the supervised classifier, the strong presence of ephemeral biological perturbation on some dates (August and October) did not significantly affect the accuracy of the identification of the native species, and it was always over 74%. Using the unsupervised classification method, the correct classification of the native *Spartina* species attained 93% and 80% for the images of April 2013 and October 2017, respectively. The identification of the invasive *Spartina anglica* proved to be much more difficult, using both the supervised and unsupervised classifiers. Considering the results obtained using the supervised classifier, the identification of the ground truth patches was fairly successful, with accuracies ranging from 53% to 90% for the images acquired in October 2017 and August 2016, respectively. However, this class was frequently mistaken for the extensive zones of the vegetated mudflat (*Zostera*), particularly within the image from October 2017, and we obtained an overestimation of the areas assigned to the invasive *Spartina*. Belluco et al. [15] also found similar uncertainties in the identification of *Spartinas* that would be confused with the typical spectral signature of soil containing microphytobenthos, which contains significant quantities of chlorophyll. Indeed, the mudflat zone can either be vegetated in different density degrees by seagrasses or present deposits of itinerant features, like algae and microphytobenthos, of several sorts. The combined presence of all these features provides complex spectral signatures that can be difficult to characterize. Thus, in this case, the only assurance we have that they do not correspond to the same species is field knowledge. We are confident that such a strong extrapolation could be reduced by increasing the number of ground truth samples of this species. Additionally, the accuracy maps of the classifications obtained for all dates (Figure 9—right panel) shows that regions classified by a higher uncertainty degree (accuracy uncertainty under 60%) correspond to channels and zones in the tidal flat, where the mixing of features is high (vegetated and un-vegetated mud, water with microphytobenthos, sediment with different degrees of humidity, etc.). Considering the accuracy metrics provided in Table 3, only images corresponding to Springtime (April 2013 and May 2017) provide a Kappa index

of 0.8, reinforcing that the lower level of biological noise within these images positively affects the performance of the classifier.

With the unsupervised algorithm (Figure 9), on the other hand, the correct classification of meadows dominated by the *Spartina anglica* species was between 10% and 25%. Such a low performance in the identification of the invasive species is probably primarily due to the fact that we consider several patches of small dimensions (2–4 m diameter). Secondly, pixels within meadows of this species were often mistaken for pixels classified as vegetated mudflat and water with microphytobenthos, which is most likely due to the fact that *Spartina anglica* vegetation cover tends to be reduced outside of the growing season. Thus, there is a high ground exposure within zones colonized by this type of vegetation, which significantly affects its radiometric signal. However, when considering only patches of larger dimensions (5–10 m diameter), the identification increases to 69.5% for the unsupervised classification of the image acquired on May 2017.

The comparison of field species reflectance is measured in the NIR and Green bands (Figure 6; Table 2), and the classification results reveal an overall satisfactory class distinction, especially concerning the distinction of the native *Spartina maritima* from the remaining vegetation. Since, in the considered area, the presence of *Spartina anglica* was mostly reduced to isolated patches towards the inner bay or to zones of mixed vegetation in the higher marsh, the identification of the invasive species was not evident, particularly in images with a higher noise level. Considering the image of April 2013, where the vegetation did not yet present a strong seasonal development, several individual *Spartina anglica* patches presented a spectral signal under  $0.01 \text{ sr}^{-1}$ , which is much lower than the radiometric measurements. Indeed, the phenology of this species is rather late, and at this time of the year, the plants were still withered, and the meadows presented a very low density. Other studies [14,15] have also shown the interference of visible soil within vegetation in its reflectance, significantly lowering it. The classification of the native *Spartina*, on the contrary, provides center class values in the range of the radiometric field measurements, between  $0.02$  and  $0.04 \text{ sr}^{-1}$  (NIR band), mostly depending on the meadow density. The better accuracy of the classification for the native *Spartina* was not so unexpected, considering that this species presents a much earlier development than that of the invasive congener.

The pixel-based classification allowed for the estimation of a surface of the main *Spartina maritima* patch of  $5685.5 \text{ m}^2$ , whereas with the manual identification of the patch, a surface of  $5378.17 (\pm 87) \text{ m}^2$  was obtained for the year of 2013. Considering the monitored patch of *Spartina anglica*, followed in the long-term aerial photographs, we obtained a surface of  $67.25 \text{ m}^2$ , using the supervised classification, and  $74.31 (\pm 1) \text{ m}^2$  using manual identification for the same date.

## 5. Conclusions

Technological evolutions of HSR multispectral satellite sensors greatly facilitates ecosystems' monitoring capability at an increasingly smaller scale. In order to make progress in the knowledge of biological invasion dynamics in salt marsh environments, we evaluated the potential of Pléiades images to assess salt marsh evolution, after a biological invasion, and discriminate the native species *Spartina maritima* from the invasive species *Spartina anglica* for the study site of the Arcachon Bay (South-west France). Different techniques for land use classification were investigated, and their performance was evaluated using a large set of ground truth data. As expected, the supervised methods exhibit, on average, better results than the unsupervised algorithms. Moreover, in this study, we demonstrated that classification accuracy is highly dependent on two main factors, which are the size of vegetation patches and the species phenology.

Pléiades images provided a robust and consistent identification of the global marsh zone. We showed that, in the Bay of Arcachon, the arrival of the exotic species was relatively controlled and did not lead to significant changes in the marsh composition, which remained dominated by the native *Spartina* species. On the other hand, distinguishing between species remains challenging, particularly when considering small features, such as the invasive species at an early stage of the invasion, which represents relevant information concerning invasion control issues. Our results showed that the



current pixel classification methods applied to Pléiades images provide a poor performance, when the order of magnitude of the *Spartina* sp. meadow size is lower than 10 m. However, lags in plant phenology provide temporal windows, making species distinction possible. The results highlight that a high-performance classification requires good knowledge of the field conditions and the vegetation's development. The biggest challenge is revealed to be the dissociation of established vegetation from ephemeral biological features. In periods of low biological productivity, the level of biological noise can be significantly reduced, and hence the success in species differentiation increases. Thus, the seasonal interference of other biological features and stages of development of the target vegetation can alter its spectral signature or influence the exposure of the colonized environment (bare ground).

In the Bay of Arcachon, the two congener *Spartina* species present a phenology lag, where their spectral signature is considerably different between Autumn and early Spring. The strong presence of algae between late Spring and Autumn shortens this temporal window of remotely sensed assessment. We found that a suitable time frame for the remote sensing exploitation of the *Spartina* species distinction should be between late winter and early spring, when *Spartina anglica* is still withered enough to be differentiated from *Spartina maritima*, and algae blooms have not yet occurred.

The current pixel classification methods are highly sensitive to environmental noise. We highlight here that the consideration of particular temporal windows might be crucial for an improved assessment of the different types of marsh vegetation. Additionally, 2-meter spatial resolution data still generate significant uncertainties in the identification of vegetation patches characterized by a decametric scale. In order to better perform the identification of the invasive species, it will be necessary to evaluate the pan-sharpened products of HSR sensors, provided by Pléiades or WorldView 3 and 4, as well as coupled approaches based on pixel classification and pattern-recognition techniques.

**Author Contributions:** Conceptualization, R.M. and A.S.; Methodology, F.F., V.M. and B.L.; Software, B.P., V.M., B.Y. and L.B.; Validation, B.P.; Formal Analysis, B.P. and B.Y.; Investigation, B.P., F.F., V.M. and B.L.; Resources, V.M., B.L. and L.B.; Data Curation, B.P.; Writing—Original Draft Preparation, B.P.; Writing—Review & Editing, B.P., F.F., V.M., B.L., L.B., R.M. and A.S.; Visualization, B.P. and V.M.; Supervision, R.M. and A.S.; Project Administration, R.M. and A.S.; Funding Acquisition, R.M. and A.S.

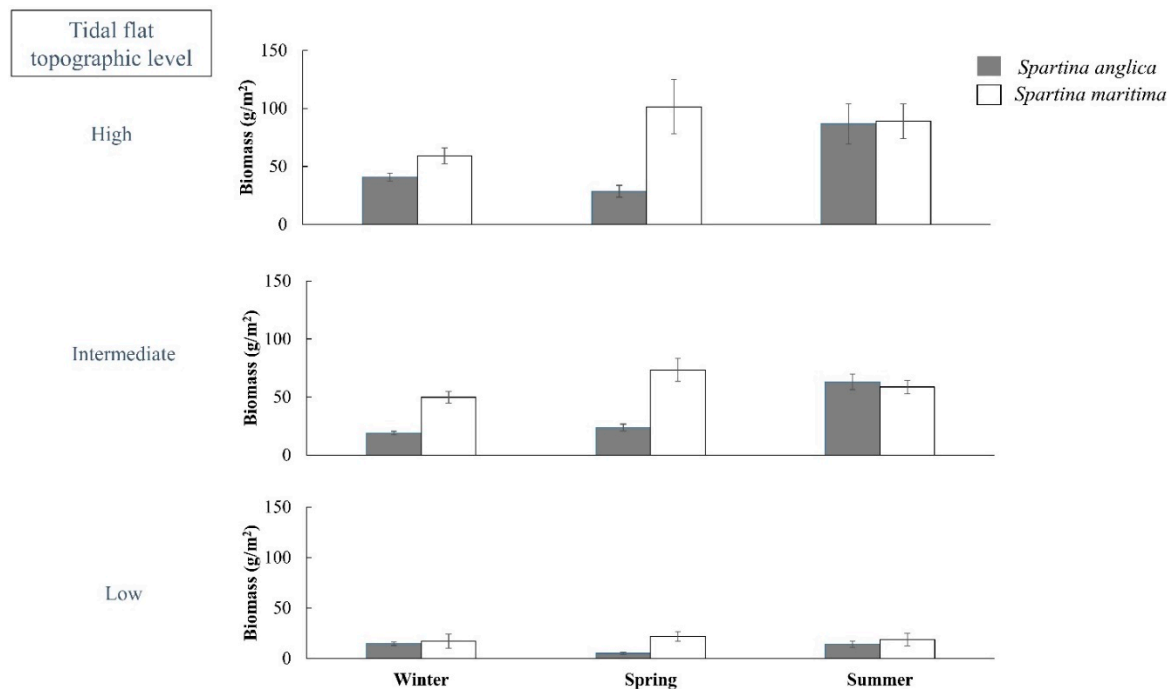
**Funding:** This research was supported by the UMR EPOC grant, “Innovative project”, and by public funds received in the framework of the Cluster of Excellence COTE (ANR-10-LABX-45) and GEOSUD (ANR-10-EQPX-20), two projects of the program “Investissements d’Avenir” managed by the French National Research Agency. B. Proença obtained a PhD grant from the University of Bordeaux.

**Acknowledgments:** The authors are grateful to Airbus Defense and Space Geo for acquiring the images according to the specifications defined by the scientific objectives of the study. We also thank Vincent Hanquiez, Alicia Romero Ramirez and Cloé Berbudeau for assistance with GIS image processing and Xavier de Montaudouin for making available part of the historical image dataset. We appreciate the contributions of all reviewers and editors that contributed to the improvement of the original manuscript.

**Conflicts of Interest:** The authors declare no conflict of interest.

## Appendix A. —Quarterly Monitoring of *Spartina anglica* and *Spartina maritima* Biomass in the Bay of Arcachon between 2014 and 2015.

These data were acquired in the course of B. Proença’s PhD thesis at the University of Bordeaux.



**Figure A1.** Seasonal biomass (winter, spring and summer) of *Spartina anglica* (dark bars) and *Spartina maritima* (white bars) at three tidal flat relative topographic levels.

## References

1. Vitousek, P.M.; Mooney, H.A.; Lubchenco, J.; Melillo, J.M. Human Domination of Earth's Ecosystems. *Science* **1997**, *277*, 494–499. [[CrossRef](#)]
2. Davis, M.A. Biotic Globalization: Does Competition from Introduced Species Threaten Biodiversity? *BioScience* **2003**, *53*, 481. [[CrossRef](#)]
3. Seabloom, E.W.; Ruggiero, P.; Hacker, S.D.; Mull, J.; Zarnetske, P. Invasive grasses, climate change, and exposure to storm-wave overtopping in coastal dune ecosystems. *Glob. Chang. Biol.* **2013**, *19*, 824–832. [[CrossRef](#)]
4. Simberloff, D.; Martin, J.-L.; Genovesi, P.; Maris, V.; Wardle, D.A.; Aronson, J.; Courchamp, F.; Galil, B.; García-Berthou, E.; Pascal, M.; et al. Impacts of biological invasions: what's what and the way forward. *Trends Ecol. Evol.* **2013**, *28*, 58–66. [[CrossRef](#)] [[PubMed](#)]
5. Crooks, J.A. Characterizing ecosystem-level consequences of biological invasions: The role of ecosystem engineers. *Oikos* **2002**, *97*, 153–166. [[CrossRef](#)]
6. Zarnetske, P.L.; Seabloom, E.W.; Hacker, S.D. Non-target effects of invasive species management: Beachgrass, birds, and bulldozers in coastal dunes. *Ecosphere* **2010**, *1*, art13. [[CrossRef](#)]
7. Schlaepfer, M.A.; Sax, D.F.; Olden, J.D. The potential conservation value of non-native species. *Conserv. Biol. J. Soc. Conserv. Biol.* **2011**, *25*, 428–437. [[CrossRef](#)]
8. Strayer, D.L.; Eviner, V.T.; Jeschke, J.M.; Pace, M.L. Understanding the long-term effects of species invasions. *Trends Ecol. Evol.* **2006**, *21*, 645–651. [[CrossRef](#)]
9. Bustamante, J.; Aragonés, D.; Afán, I.; Luque, C.J.; Pérez-Vázquez, A.; Castellanos, E.M.; Díaz-Delgado, R. Hyperspectral Sensors as a Management Tool to Prevent the Invasion of the Exotic Cordgrass *Spartina densiflora* in the Doñana Wetlands. *Remote Sens.* **2016**, *8*, 1001. [[CrossRef](#)]
10. Correll, M.D.; Hantson, W.; Hodgman, T.P.; Cline, B.B.; Elphick, C.S.; Shriver, W.G.; Tymkiw, E.L.; Olsen, B.J. Fine-Scale Mapping of Coastal Plant Communities in the Northeastern USA. *Wetlands* **2018**, 1–12. [[CrossRef](#)]
11. Hacker, S.D.; Heimer, D.; Hellquist, C.E.; Reeder, T.G.; Reeves, B.; Riordan, T.J.; Dethier, M.N. A Marine Plant (*Spartina Anglica*) Invades Widely Varying Habitats: Potential Mechanisms of Invasion and Control. *Biol. Invasions* **2001**, *3*, 211–217. [[CrossRef](#)]

12. Early, R.; Bradley, B.A.; Dukes, J.S.; Lawler, J.J.; Olden, J.D.; Blumenthal, D.M.; Gonzalez, P.; Grosholz, E.D.; Ibañez, I.; Miller, L.P.; et al. Global threats from invasive alien species in the twenty-first century and national response capacities. *Nat. Commun.* **2016**, *7*, 12485. [[CrossRef](#)] [[PubMed](#)]
13. Marani, M.; Lanzoni, S.; Silvestri, S.; Rinaldo, A. Tidal landforms, patterns of halophytic vegetation and the fate of the lagoon of Venice. *J. Mar. Syst.* **2004**, *51*, 191–210. [[CrossRef](#)]
14. Silvestri, S.; Marani, M.; Marani, A. Hyperspectral remote sensing of salt marsh vegetation, morphology and soil topography. *Phys. Chem. Earth Parts ABC* **2003**, *28*, 15–25. [[CrossRef](#)]
15. Belluco, E.; Camuffo, M.; Ferrari, S.; Modenese, L.; Silvestri, S.; Marani, A.; Marani, M. Mapping salt-marsh vegetation by multispectral and hyperspectral remote sensing. *Remote Sens. Environ.* **2006**, *105*, 54–67. [[CrossRef](#)]
16. Klemas, V. Remote Sensing of Wetlands: Case Studies Comparing Practical Techniques. *J. Coast. Res.* **2011**, 418–427.
17. Thomson, A.G.; Huiskes, A.; Cox, R.; Wadsworth, R.A.; Boorman, L.A. Short-term vegetation succession and erosion identified by airborne remote sensing of Westerschelde salt marshes, The Netherlands. *Int. J. Remote Sens.* **2004**, *25*, 4151–4176. [[CrossRef](#)]
18. Barillé, L.; Robin, M.; Harin, N.; Bargain, A.; Launeau, P. Increase in seagrass distribution at Bourgneuf Bay (France) detected by spatial remote sensing. *Aquat. Bot.* **2010**, *92*, 185–194. [[CrossRef](#)]
19. Zuo, P.; Zhao, S.; Liu, C.; Wang, C.; Liang, Y. Distribution of *Spartina* spp. along China's coast. *Ecol. Eng.* **2012**, *40*, 160–166. [[CrossRef](#)]
20. Zhang, R.S.; Shen, Y.M.; Lu, L.Y.; Yan, S.G.; Wang, Y.H.; Li, J.L.; Zhang, Z.L. Formation of *Spartina alterniflora* salt marshes on the coast of Jiangsu Province, China. *Ecol. Eng.* **2004**, *23*, 95–105. [[CrossRef](#)]
21. Li, J.; Gao, S.; Wang, Y. Invading cord grass vegetation changes analyzed from Landsat-TM imageries: A case study from the Wanggang area, Jiangsu coast, eastern China. *Acta Oceanol. Sin.* **2010**, *29*, 26–37. [[CrossRef](#)]
22. Ouyang, Z.-T.; Gao, Y.; Xie, X.; Guo, H.-Q.; Zhang, T.-T.; Zhao, B. Spectral Discrimination of the Invasive Plant *Spartina alterniflora* at Multiple Phenological Stages in a Saltmarsh Wetland. *PLoS ONE* **2013**, *8*, e67315. [[CrossRef](#)] [[PubMed](#)]
23. Chapman, V.J. *Coastal Vegetation*; Pergamon Press: Oxford, UK; Macmillan: New York, NY, USA, 1964.
24. Pennings, S.C.; Callaway, R.M. Salt Marsh Plant Zonation: The Relative Importance of Competition and Physical Factors. *Ecology* **1992**, *73*, 681–690. [[CrossRef](#)]
25. Adam, E.; Mutanga, O.; Rugege, D. Multispectral and hyperspectral remote sensing for identification and mapping of wetland vegetation: A review. *Wetl. Ecol. Manag.* **2010**, *18*, 281–296. [[CrossRef](#)]
26. Silvestri, S.; Marani, M.; Settle, J.; Benvenuto, F.; Marani, A. Salt marsh vegetation radiometry: Data analysis and scaling. *Remote Sens. Environ.* **2002**, *80*, 473–482. [[CrossRef](#)]
27. Clint Slatton, K.; Crawford, M.M.; Chang, L.-D. Modeling temporal variations in multipolarized radar scattering from intertidal coastal wetlands. *ISPRS J. Photogramm. Remote Sens.* **2008**, *63*, 559–577. [[CrossRef](#)]
28. Sun, C.; Liu, Y.; Zhao, S.; Zhou, M.; Yang, Y.; Li, F. Classification mapping and species identification of salt marshes based on a short-time interval NDVI time-series from HJ-1 optical imagery. *Int. J. Appl. Earth Obs. Geoinf.* **2016**, *45*, 27–41. [[CrossRef](#)]
29. Mouw, C.B.; Greb, S.; Aurin, D.; DiGiacomo, P.M.; Lee, Z.; Twardowski, M.; Binding, C.; Hu, C.; Ma, R.; Moore, T.; et al. Aquatic color radiometry remote sensing of coastal and inland waters: Challenges and recommendations for future satellite missions. *Remote Sens. Environ.* **2015**, *160*, 15–30. [[CrossRef](#)]
30. Hill, V.J.; Zimmerman, R.C.; Bissett, W.P.; Dierssen, H.; Kohler, D.D.R. Evaluating Light Availability, Seagrass Biomass, and Productivity Using Hyperspectral Airborne Remote Sensing in Saint Joseph's Bay, Florida. *Estuaries Coasts* **2014**, *37*, 1467–1489. [[CrossRef](#)]
31. Garzelli, A.; Nencini, F.; Alparone, L.; Aiazzi, B.; Baronti, S. Pan-sharpening of multispectral images: A critical review and comparison. In Proceedings of the 2004 IEEE International Geoscience and Remote Sensing Symposium, Anchorage, AK, USA, 20–24 September 2004; Volume 1, p. 84.
32. Akula, R.; Gupta, R.; Devi, M.R.V. An efficient PAN sharpening technique by merging two hybrid approaches. *Procedia Eng.* **2012**, *30*, 535–541. [[CrossRef](#)]
33. Carter, G.A.; Lucas, K.L.; Blossom, G.A.; Lassitter, C.L.; Holiday, D.M.; Mooneyhan, D.S.; Fastring, D.R.; Holcombe, T.R.; Griffith, J.A. Remote Sensing and Mapping of Tamarisk along the Colorado River, USA: A Comparative Use of Summer-Acquired Hyperion, Thematic Mapper and QuickBird Data. *Remote Sens.* **2009**, *1*, 318–329. [[CrossRef](#)]

34. Zak, M.R.; Cabido, M. Spatial patterns of the Chaco vegetation of central Argentina: Integration of remote sensing and phytosociology. *Appl. Veg. Sci.* **2002**, *5*, 213–226.
35. Allard, J.; Chaumillon, E.; Féliès, H. A synthesis of morphological evolutions and Holocene stratigraphy of a wave-dominated estuary: The Arcachon lagoon, SW France. *Cont. Shelf Res.* **2009**, *29*, 957–969. [[CrossRef](#)]
36. Cayocca, F. Long-term morphological modeling of a tidal inlet: the Arcachon Basin, France. *Coast. Eng.* **2001**, *42*, 115–142. [[CrossRef](#)]
37. Plus, M.; Dumas, F.; Stanisiere, J.-Y.; Maurer, D. Hydrodynamic characterization of the Arcachon Bay, using model-derived descriptors. *Cont. Shelf Res.* **2009**, *29*, 1008–1013. [[CrossRef](#)]
38. Baumel, A.; Ainouche, M.L.; Levasseur, J.E. Molecular investigations in populations of *Spartina anglica* C.E. Hubbard (Poaceae) invading coastal Brittany (France). *Mol. Ecol.* **2001**, *10*, 1689–1701. [[CrossRef](#)]
39. Soriano-Sierra, E.J. Etude Ecologique des Marais Sales du Bassin d’Arcachon: Structure et Evolution de Schorres, Production et Dégradation de leur Végétation et Echanges de Matières Particulaires entre les Schorres et le Bassin 1992 (Doctoral dissertation). Available online: <http://www.theses.fr/1992BOR10565> (accessed on 14 March 2019).
40. Labourg, P.J.; Soriano-Sierra, E.-J.; Auby, I. Evolution récente de la végétation intertidale du Delta de l’Eyre. In Proceedings of the Travaux et colloques Scientifiques, Le Delta de La Leyre, Le Teich, France, 21–23 October 1993.
41. Pierce, S.M. Estimation of the non-seasonal production of *Spartina maritima* (Curtis) Fernald in a South African Estuary. *Estuar. Coast. Shelf Sci.* **1983**, *16*, 241–254. [[CrossRef](#)]
42. Proença, B.; Nez, T.; Poli, A.; Ciutat, A.; Devaux, L.; Sottolichio, A.; de Montaudouin, X.; Michalet, R. Intraspecific facilitation explains the spread of the invasive engineer *Spartina anglica* in Atlantic salt marshes. *J. Veg. Sci.* **2019**, *30*, 212–223. [[CrossRef](#)]
43. Auby, I.; Labourg, P.-J. Seasonal dynamics of *Zostera noltii* hornem. In the Bay of Arcachon (France). *J. Sea Res.* **1996**, *35*, 269–277. [[CrossRef](#)]
44. Castel, J.; Caumette, P.; Herbert, R. Eutrophication gradients in coastal lagoons as exemplified by the Bassin d’Arcachon and the Etang du Prévost. *Hydrobiologia* **1996**, *329*, ix–xxviii. [[CrossRef](#)]
45. Takasu, T. RTKLIB: Open source program package for RTK-GPS. In Proceedings of the FOSS4G, Tokyo, Japan, 2 November 2009.
46. Takasu, T.; Yasuda, A. Development of the low-cost RTK-GPS receiver with an open source program package RTKLIB. In Proceedings of the International Symposium on GPS/GNSS, Jeju, Korea, 4–6 November 2009; pp. 4–6.
47. Frappart, F.; Roussel, N.; Darrozes, J.; Bonneton, P.; Bonneton, N.; Detandt, G.; Perosanz, F.; Loyer, S. High rate GNSS measurements for detecting non-hydrostatic surface wave. Application to tidal bore in the Garonne River. *Eur. J. Remote Sens.* **2016**, *49*, 917–932. [[CrossRef](#)]
48. Duggin, M.J.; Philipson, W.R. Field measurement of reflectance: Some major considerations. *Appl. Opt.* **1982**, *21*, 2833–2840. [[CrossRef](#)]
49. Inglada, J.; Christophe, E. The Orfeo Toolbox remote sensing image processing software. In Proceedings of the 2009 IEEE International Geoscience and Remote Sensing Symposium, Cape Town, South Africa, 12–17 July 2009; Volume 4, pp. IV-733–IV-736.
50. Bru, D.; Lubac, B.; Normandin, C.; Robinet, A.; Leconte, M.; Hagolle, O.; Martiny, N.; Jamet, C. Atmospheric correction of multi-spectral littoral images using a PHOTONS/AERONET-based regional aerosol model. *Remote Sens.* **2017**, *9*, 814. [[CrossRef](#)]
51. Rouse, J.W., Jr.; Haas, R.H.; Schell, J.A.; Deering, D.W. *Monitoring Vegetation Systems in the Great Plains with ERTS*; NASA: Washington, DC, USA, 1974; pp. 309–317.
52. Hutchinson, C.F. Land remote sensing technology and methodology. *Clim. Chang.* **1986**, *9*, 149–166. [[CrossRef](#)]
53. Bertsimas, D.; Tsitsiklis, J. Simulated Annealing. *Stat. Sci.* **1993**, *8*, 10–15. [[CrossRef](#)]
54. Breiman, L. Random Forests. *Mach. Learn.* **2001**, *45*, 5–32. [[CrossRef](#)]



55. Sun, C.; Liu, Y.; Zhao, S.; Li, H.; Sun, J. Saltmarshes Response to Human Activities on a Prograding Coast Revealed by a Dual-Scale Time-Series Strategy. *Estuaries Coasts* **2017**, *40*, 522–539. [[CrossRef](#)]
56. Sun, C.; Fagherazzi, S.; Liu, Y. Classification mapping of salt marsh vegetation by flexible monthly NDVI time-series using Landsat imagery. *Estuar. Coast. Shelf Sci.* **2018**, *213*, 61–80. [[CrossRef](#)]



© 2019 by the authors. Licensee MDPI, Basel, Switzerland. This article is an open access article distributed under the terms and conditions of the Creative Commons Attribution (CC BY) license (<http://creativecommons.org/licenses/by/4.0/>).