



**HAL**  
open science

# Biped Stabilization by Linear Feedback of the Variable-Height Inverted Pendulum Model

Stéphane Caron

► **To cite this version:**

Stéphane Caron. Biped Stabilization by Linear Feedback of the Variable-Height Inverted Pendulum Model. 2019. hal-02289919v1

**HAL Id: hal-02289919**

**<https://hal.science/hal-02289919v1>**

Preprint submitted on 17 Sep 2019 (v1), last revised 28 Mar 2020 (v3)

**HAL** is a multi-disciplinary open access archive for the deposit and dissemination of scientific research documents, whether they are published or not. The documents may come from teaching and research institutions in France or abroad, or from public or private research centers.

L'archive ouverte pluridisciplinaire **HAL**, est destinée au dépôt et à la diffusion de documents scientifiques de niveau recherche, publiés ou non, émanant des établissements d'enseignement et de recherche français ou étrangers, des laboratoires publics ou privés.

# Biped Stabilization by Linear Feedback of the Variable-Height Inverted Pendulum Model

Stéphane Caron

**Abstract**—The variable-height inverted pendulum (VHIP) model enables a new balancing strategy, based on vertical motions of the center of mass, in addition to the well-known ankle strategy. We propose a biped stabilizer based on linear feedback of the VHIP that is simple to implement, coincides with the state-of-the-art for small perturbations and is able to recover from larger perturbations thanks to this new strategy. This solution is based on “best-effort” pole placement of the 4D divergent component of motion of the VHIP under input feasibility and state viability constraints. We complement it with a suitable whole-body admittance control law and test the stabilizer on the HRP-4 humanoid robot.

## I. INTRODUCTION

Bipeds are constantly compensating undesired motions of their floating base by regulating their interaction forces with the environment, an action known as *balancing* or *stabilization*. Stabilization can be implemented by a collection of feedback control laws, referred to collectively as a *stabilizer*. Any stabilizer needs to answer two core questions. First, what contact wrench should be applied onto the environment in response to an undesired floating base motion? Second, how to realize this contact wrench?

Reduced models play a key role in answering the first question. A reduced model makes assumptions on the contact wrench and selects variables to describe it. The most common reduced model is the *linear inverted pendulum* (LIP) [12], which assumes constant centroidal angular momentum as well as a planar motion of the center of mass (CoM), and parameterizes the contact wrench by its zero-tilting moment point (ZMP) [23]. For this model, the answer to our question is known: the ZMP of ground reaction forces should react proportionally to deviations of the *divergent component of motion* (DCM) of the floating base. This solution yields the best linear feedback controller [21] and has been widely reproduced [13], [10], [14], [5].

The LIP leaves us with two avenues for improvement: enabling angular momentum [25] or enabling height variations. The *variable-height inverted pendulum* (VHIP) [15] explores the latter with the addition of an input  $\lambda$  that represents the stiffness of the massless leg between CoM and ZMP. This new input makes the system nonlinear, but gives it the ability to fall or push harder on the ground, enabling a new “height variation” recovery strategy when ZMP compensation is not

available [15]. Studies of the VHIP have focused on using this strategy to balance in the 2D sagittal plane [19], [20], [15], with recent applications on hardware [22]. Numerical optimization of 3D VHIP trajectories has also turned out to be tractable for both balancing and walking [2].

The main alternative to the VHIP is the well-known 3D DCM [9]. This reduced model works with the same set of assumptions, but is more tractable owing to its linear dynamics. Notably, it can be used for linear feedback control, whereas the aforementioned 3D VHIP controller is based on nonlinear model predictive control. The price that the 3D DCM pays for this simplicity lies in its nonlinear feasibility constraints [4]. Unless they are taken into account, *e.g.* by nonlinear model predictive control, the 3D DCM cannot produce the height-variation strategy that the VHIP allows.

In this study, we uncover a new solution on the spectrum: a linear feedback controller for the (nonlinear) VHIP that coincides with the 3D DCM as long as feasibility constraints are not saturated, and resorts to the height variation strategy when the ZMP hits the edge of its support area.

To implement VHIP tracking on our position-controlled robot, we also propose a whole-body admittance control strategy corresponding to the new VHIP input  $\lambda$ . We validate the close-loop stability and performance of the resulting stabilizer in preliminary experiments on the HRP-4 humanoid.

## II. REDUCED MODEL TRACKING

What reaction forces should a robot apply on the environment to compensate deviations of its floating base?

Let us consider first the net contact wrench  $(\mathbf{f}, \boldsymbol{\tau}_c)$ , which consists of the resultant  $\mathbf{f}$  of contact forces applied to the robot and their moment  $\boldsymbol{\tau}_c$  around the center of mass (CoM)  $\mathbf{c}$ . The equations of motion of an articulated robot consist of two parts: joint dynamics, and floating base dynamics [24]. Floating base dynamics are governed by Newton and Euler equations:

$$\begin{bmatrix} m\ddot{\mathbf{c}} \\ \dot{\mathbf{L}}_c \end{bmatrix} = \begin{bmatrix} \mathbf{f} \\ \boldsymbol{\tau}_c \end{bmatrix} + \begin{bmatrix} m\mathbf{g} \\ \mathbf{0} \end{bmatrix} \quad (1)$$

where  $m$  denotes the total mass,  $\mathbf{g}$  is the gravity vector,  $\mathbf{c}$  the position of the center of mass (CoM) and  $\mathbf{L}_c$  the angular momentum around  $\mathbf{c}$ .

### A. Inverted pendulum models

1) *Variable-height inverted pendulum*: assuming constant centroidal angular momentum  $\dot{\mathbf{L}}_c = \mathbf{0}$ , centroidal dynamics are reduced to the variable-height inverted pendulum (VHIP) model [15]:

$$\ddot{\mathbf{c}} = \lambda(\mathbf{c} - \mathbf{z}) + \mathbf{g} \quad (2)$$

The author is with the Montpellier Laboratory of Informatics, Robotics and Microelectronics (LIRMM), CNRS–University of Montpellier, France. E-mail: stephane.caron@lirmm.fr

The author warmly thanks Arnaud Tanguy for his assistance with experiments, as well as the friendly team of graduate and post-graduate students in the IDH team.

With its angular coordinates constrained to the manifold  $\tau_c = \mathbf{0}$ , the contact wrench is characterized by the three coordinates  $(\lambda, z)$  that define its resultant  $\mathbf{f} = m\lambda(\mathbf{c} - \mathbf{z})$ . The coordinate  $\lambda$  is a normalized stiffness while  $z$  is the zero-tilting moment point (ZMP) [23]. To be feasible, a contact wrench must have a positive  $\lambda$  (contact unilaterality) and a ZMP  $z$  within the contact surface; mathematically, these are linear constraints  $\lambda > 0$  and  $\mathbf{C}z \leq \mathbf{d}$ . Note that, although we write it for convenience as a 3D vector in the world frame, the ZMP is a two-dimensional quantity as it lies on the contact surface.

2) *Linear inverted pendulum*: when walking over a horizontal surface, further assuming a constant CoM height  $c_z = h$  leads to the linear inverted pendulum (LIP) model [12]:

$$\ddot{\mathbf{c}} = \omega_0^2(\mathbf{c} - \mathbf{z}) + \mathbf{g} \quad (3)$$

where  $\omega_0 = \sqrt{g/h}$  with  $g$  the standard acceleration due to gravity. With its stiffness  $\lambda$  constrained to the manifold  $\lambda = \omega_0^2$ , the contact wrench is then characterized by the two coordinates  $z$  of the ZMP. Note how the natural frequency  $\omega_0$  of the LIP is chosen so that  $\ddot{c}_z = 0$

3) *Floating-base inverted pendulum*: alternatively, the CoM acceleration can be parameterized by the *enhanced centroidal moment pivot* (eCMP) [9]:

$$\ddot{\mathbf{c}} = \frac{1}{b^2}(\mathbf{c} - \mathbf{e}) + \mathbf{g} \quad (4)$$

where  $b > 0$  is a new parameter chosen by the user. In the LIP where  $b = 1/\omega_0$ , the eCMP  $\mathbf{e}$  coincides with the ZMP  $\mathbf{z}$ . While the parameter  $b$  is usually chosen close to  $1/\omega_0$ , the interest of this model is that it does not include a planar CoM constraint: the CoM can move vertically, but then the eCMP leaves the contact area. The actual ZMP is located at the intersection with the contact area of the ray that traverses the CoM and eCMP.

The floating-base inverted pendulum (FIP) expresses the same contact wrenches as the VHIP but its input is the 3D eCMP  $\mathbf{e}$  rather than a 2D ZMP  $\mathbf{z}$  and normalized stiffness  $\lambda$ . The price to pay for this simpler input is that its feasibility constraints become nonlinear [4] (they can be approximated linearly for small height variations [26]).

### B. Divergent components of motion

For all three reduced models, an exponential dichotomy can be applied to decompose the second-order dynamics of the center of mass into two first-order systems.

1) *Linear inverted pendulum*: we can define the divergent component of motion (DCM), also known as capture point [18] for the LIP, as:

$$\dot{\boldsymbol{\xi}} = \mathbf{c} + \frac{\dot{\mathbf{c}}}{\omega_0} \quad (5)$$

Taking the time derivative of this expression and injecting Equation (3) yields:

$$\dot{\boldsymbol{\xi}} = \omega_0(\boldsymbol{\xi} - \mathbf{z}) + \frac{\mathbf{g}}{\omega_0} \quad \dot{\mathbf{c}} = \omega_0(\boldsymbol{\xi} - \mathbf{c}) \quad (6)$$

The DCM is repelled by the ZMP, while the CoM is attracted to the DCM in the second. Importantly, CoM dynamics have

become independent from the ZMP and stable with respect to the DCM. Controlling only the DCM therefore suffices to control the CoM, and thus the floating base of the robot.

2) *Floating-base inverted pendulum*: the 3D DCM is defined for the FIP model as:

$$\boldsymbol{\xi} = \mathbf{c} + b\dot{\mathbf{c}} \quad (7)$$

Taking the time derivative of this expression and injecting Equation (4) yields:

$$\dot{\boldsymbol{\xi}} = \frac{1}{b}(\boldsymbol{\xi} - \mathbf{e}) + b\mathbf{g} \quad \dot{\mathbf{c}} = \frac{1}{b}(\boldsymbol{\xi} - \mathbf{c}) \quad (8)$$

Second order dynamics are again decoupled in two linear first-order DCM-eCMP and CoM-DCM sub-systems.

3) *Variable height inverted pendulum*: a divergent component of motion for the VHIP can be defined as [11]:

$$\boldsymbol{\xi} = \mathbf{c} + \frac{\dot{\mathbf{c}}}{\omega} \quad (9)$$

where  $\omega$  is *time-varying* and satisfies the Riccati equation:

$$\dot{\omega} = \omega^2 - \lambda \quad (10)$$

See *e.g.* [2] for details on how this equation appears in the derivation of divergent components of motion. Taking the time derivative of (9) and injecting Equations (2) and (10) yields:

$$\dot{\boldsymbol{\xi}} = \frac{\lambda}{\omega}(\boldsymbol{\xi} - \mathbf{z}) + \frac{\mathbf{g}}{\omega} \quad \dot{\mathbf{c}} = \omega(\boldsymbol{\xi} - \mathbf{c}) \quad (11)$$

Second-order dynamics are thus decoupled in two first-order *nonlinear* systems.

### C. Linear feedback control of the DCM

Let us denote with the superscript  $\square^d$  a reference state of the reduced model satisfying all of its equations, for instance  $\dot{\mathbf{c}}^d = \omega^d(\boldsymbol{\xi}^d - \mathbf{c}^d)$ . The error on a quantity  $\mathbf{x}$  is written  $\Delta\mathbf{x} := \mathbf{x} - \mathbf{x}^d$ . In the case of the LIP, from Equation (8) the time derivative of the DCM error  $\Delta\boldsymbol{\xi}$  is:

$$\Delta\dot{\boldsymbol{\xi}} = \omega_0(\Delta\boldsymbol{\xi} - \Delta\mathbf{z}) \quad (12)$$

We want to realize *pole placement* so that this error converges exponentially to zero:

$$\Delta\dot{\boldsymbol{\xi}} = (1 - k_p)\omega_0\Delta\boldsymbol{\xi} \quad (13)$$

where  $1 - k_p < 0$  is the normalized closed-loop pole. Combining these two equations yields:

$$\Delta\mathbf{z} = k_p\Delta\boldsymbol{\xi} \quad (14)$$

This control law provides an answer to our initial question: when it observes a deviation  $\Delta\boldsymbol{\xi}$  of its DCM from the reference  $\boldsymbol{\xi}^d$ , the robot modifies its ZMP by an amount  $\Delta\mathbf{z}$  proportional to this DCM error. An integral term can also be added to eliminate steady-state error [16].

The derivation (12)–(14) can be readily applied to the FIP [9], leading to:

$$\Delta\dot{\boldsymbol{\xi}} = (1 - k_p)\frac{1}{b}\Delta\boldsymbol{\xi} \quad \Delta\mathbf{e} = k_p\Delta\boldsymbol{\xi} \quad (15)$$

Pole placement is then generalized to the 3D DCM parameterized by  $b$ . As long as the eCMP  $e = e^d + \Delta e$  is feasible, *i.e.* the ZMP projected along the CoM–eCMP axis lies within the support area, it actually achieves the best possible closed-loop dynamics. When the corresponding ZMP falls outside of the support area, it is projected back to it and closed-loop pole placement is not guaranteed any more. In this case, the DCM error will either decrease sufficiently to end saturation, or diverge.

### III. LINEAR FEEDBACK CONTROL OF THE VHIP

Recent studies of the VHIP showed the existence of an alternative: even with the ZMP constrained at the boundary of its support area, the system might be balanced using the height-variation strategy. Trajectories that display this strategy can be found by numerical optimization [20], [14], [2], but not by proportional feedback of the 3D DCM (7) as they correspond to variations of the parameter  $b$ . In what follows, we will see this behavior emerge from linear feedback control of the nonlinear DCM of the VHIP.

#### A. Four-dimensional DCM for the VHIP

We noted in [2] how  $\omega$  behaves like a divergent component repelled by the input  $\lambda$ . Let us embrace this observation fully and consider the joint vector  $[\xi \ \omega]$  as a four-dimensional DCM with three spatial and one frequential coordinate. Its time derivatives are given by Equations (10)–(11), and their first order differential with respect to the reference state is:

$$\Delta \dot{\xi} = \left[ \frac{\lambda^d}{\omega^d} (\Delta \xi - \Delta z) + \frac{\xi^d - z^d}{\omega^d} \Delta \lambda - \frac{\ddot{c}^d}{\omega^{d2}} \Delta \omega \right] \quad (16)$$

$$\Delta \dot{\omega} = 2\omega^d \Delta \omega - \Delta \lambda \quad (17)$$

where we assume that quadratic and higher order errors such as  $\Delta \omega^2$  can be neglected.

This system has a four-dimensional state vector  $[\Delta \xi \ \Delta \omega]$  and a three-dimensional input vector  $[\Delta z \ \Delta \lambda]$ . Let us select its closed-loop poles as:

$$\Delta \dot{\xi} = (1 - k_p) \frac{\lambda^d}{\omega^d} \Delta \xi \quad (18)$$

$$\Delta \dot{\omega} = (1 - k_p) \omega^d \Delta \omega \quad (19)$$

Combining Equations (16)–(17) and (18)–(19) yields:

$$\Delta z + \frac{\xi^d - v^d}{\omega^d} \Delta \omega + \frac{z^d - \xi^d}{\lambda^d} \Delta \lambda = k_p \Delta \xi \quad (20)$$

$$\Delta \lambda = \omega^d (1 + k_p) \Delta \omega \quad (21)$$

where we used the shorthand  $v^d := z^d - g^d/\lambda^d$ . When  $\Delta \omega = 0$  Hz and  $\Delta \lambda = 0$  Hz<sup>2</sup>, Equation (20) reduces to standard proportional feedback of the DCM at the ZMP (14). Meanwhile, Equation (21) provides a direct analogous of (14) over frequential coordinates.

#### B. The DCM is not a direct measurement

A novelty of the VHIP lies in its ability to *choose* its DCM by varying the natural frequency  $\omega$ . In the LIP or FIP, the DCM error  $\Delta \xi$  is fully determined from sensory measurements  $\Delta c$  and  $\Delta \dot{c}$  by Equations (5) and (7). In the VHIP, differentiating Equations (9) gives us:

$$\Delta \xi = \Delta c + \frac{\Delta \dot{c}}{\omega^d} - \frac{\dot{c}}{\omega^d} \frac{\Delta \omega}{\omega^d} \quad (22)$$

The measured output vector  $\Delta c + \Delta \dot{c}/\omega^d$  has dimension three, but the state vector  $[\Delta \xi \ \Delta \omega]$  has dimension four. The extra dimension is not an exogenous output: rather, the controller has an internal state by which it *decides how to weigh* sensory measurements. Intuitively, if the robot is pushed hard enough so that the ZMP saturates its support area for the current value of  $\omega$ , the controller can choose to increase  $\omega$  instead, thus increasing  $\lambda$  and pushing harder on the ground by (21). This way, it can keep the spatial DCM in the vicinity of the contact area, yet only for a while as pushing harder on the ground requires raising the CoM, which is only available in limited supply depending on joint kinematic and torque limits.

#### C. Input feasibility conditions

To generate feasible contact wrenches, the inputs  $\Delta z$  and  $\Delta \lambda$  need to satisfy a set of inequality constraints.

Let us define the ZMP frame as the average of foot contact frames over all feet of the robot in contact with the environment. We denote the origin of this frame by  $\mathbf{p}$  frame and its rotation matrix (from ZMP to inertial frame) by  $\mathbf{R}$ .

1) *ZMP support area*: the coordinates of the ZMP compensation in the inertial frame are then given by  $\Delta z = \mathbf{R} \bar{z}$ , where  $\bar{z} \in \mathbb{R}^2$  and  $\mathbf{R}$  consists of the first two columns of  $\mathbf{R}$ . In single support, the ZMP after compensation should lie within the contact area, so that:

$$-X \leq \bar{z}_x + \Delta \bar{z}_x \leq X \quad (23)$$

$$-Y \leq \bar{z}_y + \Delta \bar{z}_y \leq Y \quad (24)$$

The inequalities provide a halfspace representation:

$$\mathbf{C} \Delta \bar{z} \leq \mathbf{d} \quad (25)$$

In double support, and more generally in multi-contact scenarios, similar halfspace representations of the multi-contact ZMP support area can be obtained by projection of the contact wrench cone [6]. A simple method to compute it is reported in Section IV.C of [3].

2) *Actuation limits*: contact unilaterality and joint torque limits of the underlying robot model can be approximated in the reduced model by lower and upper bounds on the normal contact force:

$$f_{min} \leq (\mathbf{n} \cdot \mathbf{f}) = m \lambda \mathbf{n} \cdot (\mathbf{c} - \mathbf{p}) \leq f_{max} \quad (26)$$

These inequalities can be readily rewritten:

$$\frac{f_{min}}{m \mathbf{n} \cdot (\mathbf{c} - \mathbf{p})} \leq \lambda^d + \Delta \lambda \leq \frac{f_{max}}{m \mathbf{n} \cdot (\mathbf{c} - \mathbf{p})} \quad (27)$$

The lower bound  $\lambda_{min}$  and upper bound  $\lambda_{max}$  thus defined depend on actuation limits, total mass and the instantaneous position of the center of mass.

#### D. State viability conditions

Input feasibility conditions are not sufficient to guarantee that the system will not diverge to a failed state: they should be complemented by state viability conditions. Instances of viability conditions include keeping the capture point (for the LIP) inside the convex hull of ground contact points [21], or bounding joint accelerations in whole-body control to maintain joint angle limits in the long run [7].

1) *Frequency limits*: to be feasible, the natural frequency  $\omega$  of the VHIP should not exceed the bounds of its corresponding input  $\lambda$  (again in fitting analogy to the spatial DCM and ZMP support area):

$$\sqrt{\lambda_{min}} \leq \omega^d + \Delta\omega \leq \sqrt{\lambda_{max}} \quad (28)$$

The intuition for this viability condition lies in the Riccati equation (10): once  $\omega^2$  decreases below  $\lambda_{min}$  it is impossible for  $\dot{\omega}$  to be positive again. See Property 6 in [2] for details.

2) *DCM height limits*: variations of  $\lambda$  require the underlying robot model to adjust the height of its CoM. From Equation (11), the CoM is attracted to the DCM, so that bounding DCM height is a sufficient condition to bound CoM height. Let us define:

$$\xi_z^{next} = \xi_z^d + \Delta\xi_z + (1 + \kappa)dt\Delta\dot{\xi}_z \quad (29)$$

where  $dt$  is the control period and  $\kappa = 0.5$  is a damping factor to allow sliding on the constraint when it is saturated without making the control problem infeasible. Height limits are finally expressed as:

$$h_{min} \leq \xi_z^{next} \leq h_{max} \quad (30)$$

#### E. Quadratic programming formulation

Our problem is now specified: realize at best the desired closed-loop poles (18)–(19) while satisfying input feasibility and state viability constraints. Let us cast it as a quadratic program:

$$\underset{\mathcal{X}}{\text{minimize}} \quad \mathcal{X}^T \mathbf{W} \mathcal{X} \quad (31)$$

$$\text{subject to} \quad \mathbf{G} \mathcal{X} \leq \mathbf{h} \quad (32)$$

$$\mathbf{A} \mathcal{X} = \mathbf{b} \quad (33)$$

We choose to include both states and inputs in our vector of optimization variables:

$$\mathcal{X} = [\Delta\xi \ \Delta\omega \ \Delta\bar{z} \ \Delta\lambda \ \Delta\sigma] \in \mathbb{R}^{10} \quad (34)$$

where  $\Delta\sigma \in \mathbb{R}^3$  is an additional vector to allow violations of our desired pole placement on the spatial DCM. We make this vector homogeneous to a position:

$$\Delta\xi = \frac{\lambda^d}{\omega^d} [(1 - k_p)\Delta\xi + \Delta\sigma] \quad (35)$$

1) *Objective function*: we minimize pole placement violations on horizontal components with highest priority, then on the vertical component:

$$\mathbf{W} = \text{diag}(\varepsilon, \varepsilon, \varepsilon, \varepsilon, \varepsilon, \varepsilon, \varepsilon, 1, 1, 10^{-3}) \quad (36)$$

where  $\varepsilon \ll 10^{-3}$  makes the matrix  $\mathbf{W}$  positive-definite, adding the minimization of other optimization variables as the lowest priority objective.

2) *Equality constraints*: states and inputs are bound together by Equations (20) (updated by (35) to include  $\Delta\sigma$ ), (21) and (?). Let us omit  $\square^d$  subscripts for concision:

$$\mathbf{A} = \begin{bmatrix} -k_p \mathbf{I}_3 & \frac{\xi - \nu}{\omega} & \bar{\mathbf{R}} & \frac{r - \xi}{\lambda} & \mathbf{I}_3 \\ \mathbf{I}_3 & \frac{\xi}{\omega^2} & \mathbf{0}_{3 \times 2} & \mathbf{0}_{3 \times 1} & \mathbf{0}_{3 \times 3} \\ \mathbf{0}_{1 \times 3} & \omega(1 + k_p) & 0 & -1 & \mathbf{0}_{1 \times 3} \end{bmatrix} \quad (37)$$

$$\mathbf{b} = [\mathbf{0}_{3 \times 1} \ \Delta\mathbf{c} + \frac{\Delta\dot{\mathbf{c}}}{\omega} \ 0]^T \quad (38)$$

where  $\mathbf{I}_3$  is the  $3 \times 3$  identity matrix,  $\mathbf{A}$  is a  $7 \times 10$  matrix and  $\mathbf{b}$  a  $7 \times 1$  column vector.

3) *Inequality constraints*: limits (25) on the ZMP, (27) on  $\lambda$  and (28) on  $\omega$  can be readily included as block matrices in  $\mathbf{G}$  and  $\mathbf{h}$ . DCM height limits are obtained by injecting the expression of the relaxed spatial DCM velocity (35) into Equation (29):

$$\mathbf{G}_\xi^{next} = \begin{bmatrix} 0 & 0 & +g_\xi & 0 & 0 & 0 & 0 & 0 & 0 & +g_\sigma \\ 0 & 0 & -g_\xi & 0 & 0 & 0 & 0 & 0 & 0 & -g_\sigma \end{bmatrix} \quad (39)$$

$$\mathbf{h}_\xi^{next} = [h_{max} - \xi_z^d \ \xi_z^d - h_{min}]^T \quad (40)$$

where  $g_\sigma = (1 + \kappa)dt\lambda^d/\omega^d$  and  $g_\xi = 1 + g_\sigma(1 - k_p)$ .

Overall, this quadratic program has 10 variables, 7 dense equality constraints and  $6 + m$  sparse inequality constraints, where the number  $m$  of ZMP inequalities is usually less than 10. During standing experiments with  $m = 4$ , it was solved in  $0.1 \pm 0.05$  ms by LSSOL on a laptop computer.

#### F. Comparison to DCM-eCMP feedback control

We compare the response of the best-effort pole placement QP (31)–(33) with standard DCM-eCMP feedback control [14], [9] in a perfect simulation.<sup>1</sup> The target state of the inverted pendulum is a static equilibrium with the center of mass  $m = 38$  kg located  $h = 80$  cm above ground and 3 cm away from the edge of the support area in the lateral direction. Both controllers use the same feedback gain  $k_p = 3$ . The velocity scaling parameter of the DCM-eCMP feedback controller is set to the recommended value  $b = \sqrt{h/g}$ .

Figure 1 illustrates the response of the two controllers to increasingly high impulses applied to the CoM in the lateral direction. For a small impulse  $i = m\Delta\dot{c}_y = 1.5$  N.s, the ZMP does not hit the edge of its support area and the two controllers match exactly.

For a medium impulse  $i = 4.5$  N.s, the ZMP hits the edge of the area but the DCM is still inside it. The DCM-eCMP controller keeps on the edge until its DCM comes back in the

<sup>1</sup>Source code: [https://github.com/stephane-caron/pymanoid/blob/master/examples/vhip\\_stabilization.py](https://github.com/stephane-caron/pymanoid/blob/master/examples/vhip_stabilization.py)



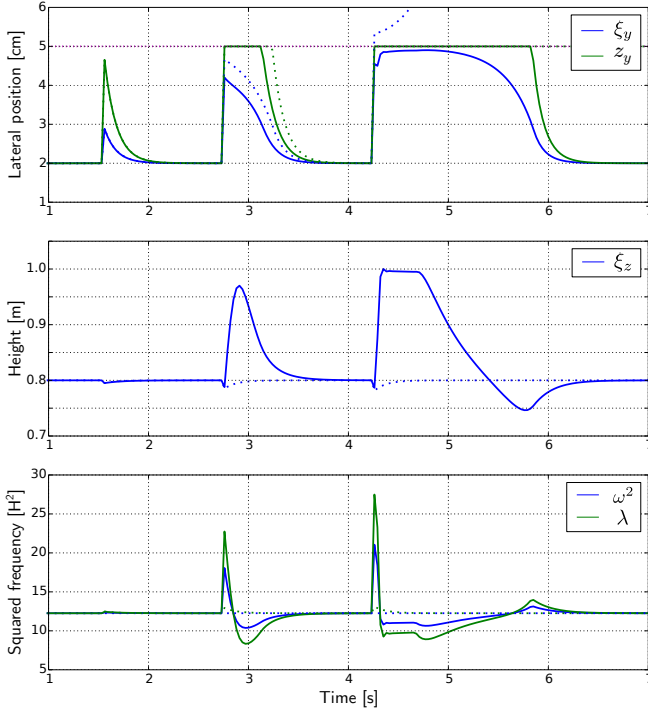


Fig. 1. Comparison of the VHIP (solid lines) and DCM-eCMP (dotted lines) feedback controllers in perfect simulation. The DCM is impacted by impulses of increasing magnitude (1.5 N.s, 4.5 N.s, 5.7 N.s). For a small impulse, the two controllers match exactly. The VHIP controller is able to sustain larger impulses thanks to the height variation strategy.

vicinity of the desired state. The VHIP controller saturates its ZMP as well, and performs two additional behaviors:

- **At impact time**,  $\omega$  jumps from its reference  $\omega_0 = 3.5$  Hz to 4.2 Hz. As a consequence, the post-impact DCM of the VHIP lies more inside the support area than its FIP counterpart.
- **After impact**, the controller adds around 15 cm of DCM height variations. As a consequence, the DCM is brought back to the desired state faster than its FIP counterpart.

Note how these two behaviors were *not* explicitly part of our controller specification: they emerge from best-effort pole placement, input feasibility and state viability constraints.

For a larger impulse  $i = 5.7$  N.s, the DCM of the FIP model falls outside of the support area. The DCM-eCMP controller is unable to recover from such disturbances. Applying the above strategy, the VHIP controller maintains its post-impact DCM within the support area. It then raises the DCM until the kinematic constraint  $\xi_z \leq h_{max} = 1$  m is met. At this stage, state and inputs are fully saturated and the controller holds on. The DCM eventually comes back to the support area and returns to the desired state.

In this particular example, the thresholds at which controllers fail are  $i = 5.2$  N.s for the DCM-eCMP controller and  $i = 6.0$  N.s for the VHIP controller.

## IV. VERTICAL FORCE CONTROL

Reduced model control produces a desired net contact wrench. For torque-controlled robots, this net wrench is supplied as a target to whole-body control [14], [8], [1], and the resulting joint torques are sent to lower-level joint controllers. For position-controlled robots, an additional layer is required to regulate wrenches by admittance control.

### A. Whole-body admittance control

Biped stabilizers usually include several admittance control laws in parallel, which can be collectively thought of as whole-body admittance control. There are two main approaches to regulate the net contact wrench: distribute it across end effectors in contact and regulate contact wrenches independently at each effector, or apply extra accelerations to the center of mass.

These two approaches are not mutually exclusive. In what follows, we will make use of the following:

- **Foot damping control** [13] regulates the center of pressure under each foot by independent damping control over their respective ankle roll and pitch joints.
- **Foot force difference control** [13] regulates the *difference* ( $f_z^{left} - f_z^{right}$ ) of measured normal forces at each foot. Regulating a relative value elegantly avoids pitfalls coming from absolute discrepancies between measured and model forces (*e.g.* in its model HRP-4 weighs 38 kg but our robot is now closer to 42 kg).
- **Horizontal CoM admittance control** [17] improves net ZMP tracking by adding a horizontal CoM acceleration offset  $\Delta \ddot{c}_{xy} = A_{xy} \Delta z$  proportional to the ZMP error.

See [5] for a more detailed survey of the state of the art.

### B. Vertical CoM admittance control

All admittance control strategies mentioned above contribute to improve ZMP tracking, which is consistent with the state of the art where reduced model control outputs a net ZMP  $z = z^d + \Delta z$ . Using them altogether, the biped becomes compliant to external perturbations in the horizontal plane, while remaining totally stiff in the vertical direction. This phenomenon is illustrated with the LIP-based stabilizer from [5] in the accompanying video.

To extend tracking to the VHIP, we want to track not only  $z$  but also  $\lambda$ , which corresponds to the normal contact force:

$$\lambda = \frac{\mathbf{n} \cdot \mathbf{f}}{m\mathbf{n} \cdot (\mathbf{c} - \mathbf{p})} = \frac{f_z}{m(c_z - z_z)} \quad (41)$$

This requirement brings back on stage the challenge of regulating absolute forces, which was *e.g.* avoided by foot force difference control. We propose to address it by extending CoM admittance control to the vertical direction based on feedback, not from the net vertical force  $f_z$ , but from the normalized stiffness  $\lambda$  of the VHIP:

$$\Delta \ddot{c}_z = A_z (\lambda^d - \lambda) = -A_z \Delta \lambda \quad (42)$$

where  $\lambda$  is measured from sensory data using Equation (41).

This admittance control law is consistent with the VHIP by design. Like other admittance control laws, it is only stable in

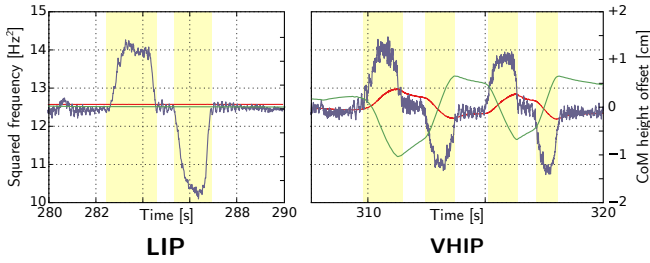


Fig. 2. Response to vertical pushes for the LIP (left) and VHIP (right) stabilizers. User pushes (yellow background) are reflected in the measured normalized stiffness  $\lambda$  (blue). In the LIP, the robot stays totally stiff. In the VHIP, its commanded stiffness  $\lambda^c$  (red) increases and the CoM height (green) complies in the direction of the user’s push.

closed loop with the reduced model controller and unstable in open loop. For instance, imagine that  $\lambda^d$  is stationary and initially greater than  $\lambda$ . The CoM will accelerate upward by (42), which will increase  $f_z$  and bring  $\lambda$  closer to  $\lambda^d$  in the short run. In the long run, this acceleration will also increase the height  $c_z$ , so that the CoM will have to keep accelerating upward to maintain  $\lambda$  close to  $\lambda^d$ , leading the CoM to diverge vertically.

## V. EXPERIMENTAL VALIDATION

We adapted the stabilizer from [5] to implement the two contributions of this manuscript: replacing LIP tracking (Section II-C) by VHIP tracking (Section III), and extending CoM admittance control to the vertical direction (Section IV-B). This software,<sup>2</sup> while still at an early stage, allowed us to validate the behavior of the closed-loop system.

### A. Foreword on vertical force measurements

Vertical admittance control made us realize that normal forces measured by HRP-4’s foot force sensors are coupled with their roll and pitch torque measurements. This issue does not seem to affect foot force difference control, but it would make the robot crouch or raise unexpectedly while leaning. For standing experiments, we reduced the amplitude of this coupling from 50 N to 5 N with a linear estimate:

$$\hat{f}_z = f_z - [\theta_x \ \theta_y \ 0] \boldsymbol{\tau}_p \quad (43)$$

where  $\boldsymbol{\tau}_p$  is the net moment of contact forces at the origin  $p$  of the ZMP frame. We identified  $(\theta_x, \theta_y) = (0.5, 3.7) \text{ m}^{-1}$ .

### B. CoM admittance control

First, we confirm the stability of the closed-loop system consisting of both VHIP tracking and three-dimensional CoM admittance control. We evaluate its performance qualitatively by assessing the compliance of the robot to external pushes, as shown in the accompanying video. In the horizontal plane, LIP and VHIP stabilizers perform identically (we use the same gain  $k_p = 1.4$  for both). In the vertical direction, the robot is totally stiff with the LIP and complies with the VHIP. Figure 2 shows the measured and commanded values of  $\lambda$  as well as CoM height variations resulting admittance

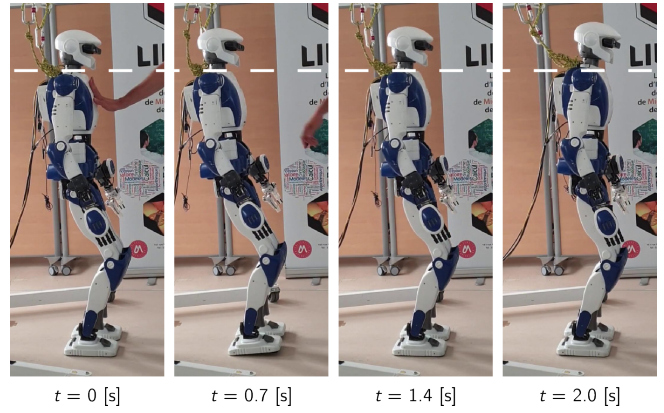


Fig. 3. Push recovery with saturation of ZMP constraints and tilting of the support feet. The VHIP stabilizer behaves like its LIP counterpart while its commanded ZMP stays inside the support area, and resorts to height variations when the ZMP compensation strategy is exhausted. This hybrid behavior is not specified explicitly, but emerges from best-effort pole placement under feasibility and viability conditions.

control. As expected, when the user pushes down,  $\lambda$  increases above  $\lambda^c$  and the CoM complies downward.

With this preliminary implementation, we could raise the admittance gain to  $A_z = 0.005 \text{ m.s}^{-2}$ , achieving a clear vertical compliance but with low bandwidth. For larger values, we could observe higher bandwidth but the center of mass would pick up oscillations from force sensor noise, which are presently wholly unfiltered. This limitation can be improved by signal filtering, *e.g.* using the solution to a similar issue proposed in [8].

### C. Push recovery

The VHIP stabilizer on HRP-4 behaves essentially like its LIP counterpart until the ZMP hits the edge of the support area. In the experiment depicted in Figure 3, we trigger this even by pushing the robot until it rocks backward. The stabilizer then raises the CoM twice: a first time around  $t = 0.7 \text{ s}$  to increase recovery forward acceleration, and a second time after  $t = 1.4 \text{ s}$  when the robot is back on its feet but has accumulated too much sagittal velocity.

### D. Walking

Walking over flat floor is not a proper benchmark for VHIP tracking as the robot should, by design of the task (walking pattern generator and stabilizer tuning), not hit ZMP constraints in the process. In these preliminary tests, we only confirmed that the VHIP stabilizer performs as well as its LIP counterpart [5] for nominal walking.

## VI. CONCLUSION

We proposed a linear feedback controller for the variable-height inverted pendulum based on best-effort pole placement under input feasibility and state viability constraints. This solution is simple to implement, coincides with the 3D DCM for small perturbations and does not require any additional parameter. It can recover from larger perturbations than the 3D DCM by leveraging both the ankle and height-variation strategies.

<sup>2</sup>[https://github.com/stephane-caron/vhip\\_walking\\_controller/](https://github.com/stephane-caron/vhip_walking_controller/)

## REFERENCES

- [1] C. Dario Bellicoso, Fabian Jenelten, Christian Gehring, and Marco Hutter. Dynamic locomotion through online nonlinear motion optimization for quadrupedal robots. *IEEE Robotics and Automation Letters*, 3(3):2261–2268, July 2018.
- [2] Stéphane Caron, Adrien Escande, Leonardo Lanari, and Bastien Mallein. Capturability-based pattern generation for walking with variable height. *IEEE Transactions on Robotics*, July 2019.
- [3] Stéphane Caron and Abderrahmane Kheddar. Multi-contact walking pattern generation based on model preview control of 3d com accelerations. In *IEEE-RAS International Conference on Humanoid Robots*, November 2016.
- [4] Stéphane Caron and Abderrahmane Kheddar. Dynamic walking over rough terrains by nonlinear predictive control of the floating-base inverted pendulum. In *IEEE/RSJ International Conference on Intelligent Robots and Systems*, September 2017.
- [5] Stéphane Caron, Abderrahmane Kheddar, and Olivier Tempier. Stair climbing stabilization of the HRP-4 humanoid robot using whole-body admittance control. In *IEEE International Conference on Robotics and Automation*, May 2019.
- [6] Stéphane Caron, Quang-Cuong Pham, and Yoshihiko Nakamura. Zmp support areas for multi-contact mobility under frictional constraints. *IEEE Transactions on Robotics*, 33(1):67–80, February 2017.
- [7] Andrea Del Prete. Joint position and velocity bounds in discrete-time acceleration/torque control of robot manipulators. *IEEE Robotics and Automation Letters*, 3(1):281–288, January 2018.
- [8] Johannes Engelsberger, George Mesesan, Alexander Werner, and Christian Ott. Torque-based dynamic walking - a long way from simulation to experiment. In *IEEE International Conference on Robotics and Automation*, page 8, May 2018.
- [9] Johannes Engelsberger, Christian Ott, and Alin Albu-Schäffer. Three-dimensional bipedal walking control based on divergent component of motion. *IEEE Transactions on Robotics*, 31(2), 2015.
- [10] Johannes Engelsberger, Christian Ott, Maximo Roa, Alin Albu-Schffer, and Gerhard Hirzinger. Bipedal walking control based on capture point dynamics. In *Intelligent Robots and Systems (IROS), 2011 IEEE/RSJ International Conference on*, pages 4420–4427, 2011.
- [11] Michael A Hopkins, Dennis W Hong, and Alexander Leonessa. Humanoid locomotion on uneven terrain using the time-varying divergent component of motion. In *IEEE-RAS International Conference on Humanoid Robots*, 2014.
- [12] Shuuji Kajita, Fumio Kanehiro, Kenji Kaneko, Kazuhito Yokoi, and Hirohisa Hirukawa. The 3d linear inverted pendulum mode: A simple modeling for a biped walking pattern generation. In *IEEE/RSJ International Conference on Intelligent Robots and Systems*, volume 1, 2001.
- [13] Shuuji Kajita, Mitsuharu Morisawa, Kanako Miura, Shin'ichiro Nakaoka, Kensuke Harada, Kenji Kaneko, Fumio Kanehiro, and Kazuhito Yokoi. Biped walking stabilization based on linear inverted pendulum tracking. In *IEEE/RSJ International Conference on Intelligent Robots and Systems*, 2010.
- [14] Twan Koolen, Sylvain Bertrand, Gray Thomas, Tomas de Boer, Tingfan Wu, Jesper Smith, Johannes Engelsberger, and Jerry Pratt. Design of a momentum-based control framework and application to the humanoid robot atlas. *International Journal of Humanoid Robotics*, 13(1):1650007, March 2016.
- [15] Twan Koolen, Michael Posa, and Russ Tedrake. Balance control using center of mass height variation: Limitations imposed by unilateral contact. In *IEEE-RAS International Conference on Humanoid Robots*, 2016.
- [16] Mitsuharu Morisawa, Shuuji Kajita, Fumio Kanehiro, Kenji Kaneko, Kanako Miura, and Kazuhito Yokoi. Balance control based on capture point error compensation for biped walking on uneven terrain. In *IEEE-RAS International Conference on Humanoid Robots*, 2012.
- [17] Ken'ichiro Nagasaka. Whole-body motion generation for a humanoid robot by dynamics filters. *PhD thesis*, 1999. The Univ. of Tokyo, in Japanese.
- [18] Jerry Pratt, John Carff, Sergey Drakunov, and Ambarish Goswami. Capture point: A step toward humanoid push recovery. In *IEEE-RAS International Conference on Humanoid Robots*, pages 200–207, 2006.
- [19] Jerry E Pratt and Sergey V Drakunov. Derivation and application of a conserved orbital energy for the inverted pendulum bipedal walking model. In *IEEE International Conference on Robotics and Automation*, pages 4653–4660, 2007.
- [20] Oscar E. Ramos and Kris Hauser. Generalizations of the capture point to nonlinear center of mass paths and uneven terrain. In *IEEE-RAS International Conference on Humanoid Robots*, 2015.
- [21] Tomomichi Sugihara. Standing stabilizability and stepping maneuver in planar bipedalism based on the best com-zmp regulator. In *IEEE International Conference on Robotics and Automation*, 2009.
- [22] Boris Jacob Van Hofslot, Robert J. Griffin, Sylvain Bertrand, and Jerry Pratt. Balancing using vertical center of mass motion: A 2d analysis from model to robot. *IEEE Robotics and Automation Letters*, 2019.
- [23] Miomir Vukobratovi and J. Stepanenko. On the stability of anthropomorphic systems. *Mathematical biosciences*, 15(1):1–37, 1972.
- [24] Pierre-Brice Wieber, Russ Tedrake, and Scott Kuindersma. Modeling and control of legged robots. In *Springer Handbook of Robotics*. Springer, 2016.
- [25] Georg Wiedebach, Sylvain Bertrand, Tingfan Wu, Luca Fiorio, Stephen McCrory, Robert Griffin, Francesco Nori, and Jerry Pratt. Walking on partial footholds including line contacts with the humanoid robot atlas. In *IEEE-RAS International Conference on Humanoid Robots*, 2016.
- [26] Alessio Zamparelli, Nicola Scianca, Leonardo Lanari, and Giuseppe Oriolo. Humanoid gait generation on uneven ground using intrinsically stable MPC. *IFAC-PapersOnLine*, 51(22):393–398, 2018.