



HAL
open science

Crosslinguistic influence of the L2 (French) on the L1 (Spanish): the case of semantic extensions in the L1 of recently immersed late bilinguals in France

Lyanne Ahumada Ebratt, Barbara Köpke

► **To cite this version:**

Lyanne Ahumada Ebratt, Barbara Köpke. Crosslinguistic influence of the L2 (French) on the L1 (Spanish): the case of semantic extensions in the L1 of recently immersed late bilinguals in France. The First HaBilNet Colloquium, May 2018, La Hulpe, Belgium. hal-02283227

HAL Id: hal-02283227

<https://hal.science/hal-02283227>

Submitted on 10 Sep 2019

HAL is a multi-disciplinary open access archive for the deposit and dissemination of scientific research documents, whether they are published or not. The documents may come from teaching and research institutions in France or abroad, or from public or private research centers.

L'archive ouverte pluridisciplinaire **HAL**, est destinée au dépôt et à la diffusion de documents scientifiques de niveau recherche, publiés ou non, émanant des établissements d'enseignement et de recherche français ou étrangers, des laboratoires publics ou privés.



Distributed under a Creative Commons Attribution 4.0 International License

Crosslinguistic influence of the L2 (French) on the L1 (Spanish): the case of semantic extensions in the L1 of recently immersed L2 late bilinguals in France

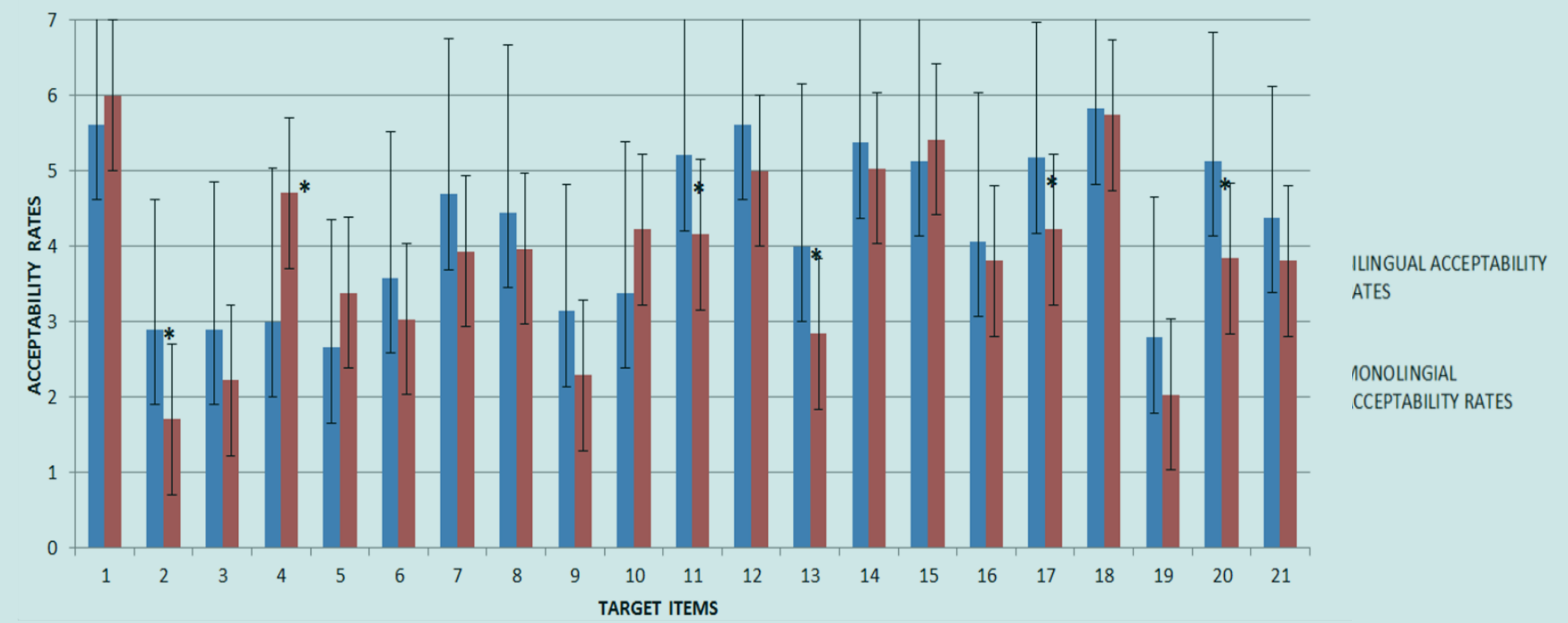
Lyanne Ahumada Ebratt & Barbara Köpke
URI Octogone-Lordat, Université de Toulouse, UT2J, Toulouse, France

BACKGROUND

“Semantic extension (SE) refers to two different types of meaning transfer whose differences are at times very subtle, but which are nevertheless quite important” (Jarvis, 2009:113).

montó las escaleras corriendo (Spanish) <to ride, to assemble, *to climb
Il a monté les escaliers en courant (French) <to go up, to climb
 He climbed the stairs running (Grosjean & Py, 1991: 42).

L1 semantics extension are produced by late bilinguals (Ahumada, 2016), such changes suggest that the acceptability of L1 structures could be restructured due to increasing L2 usage.



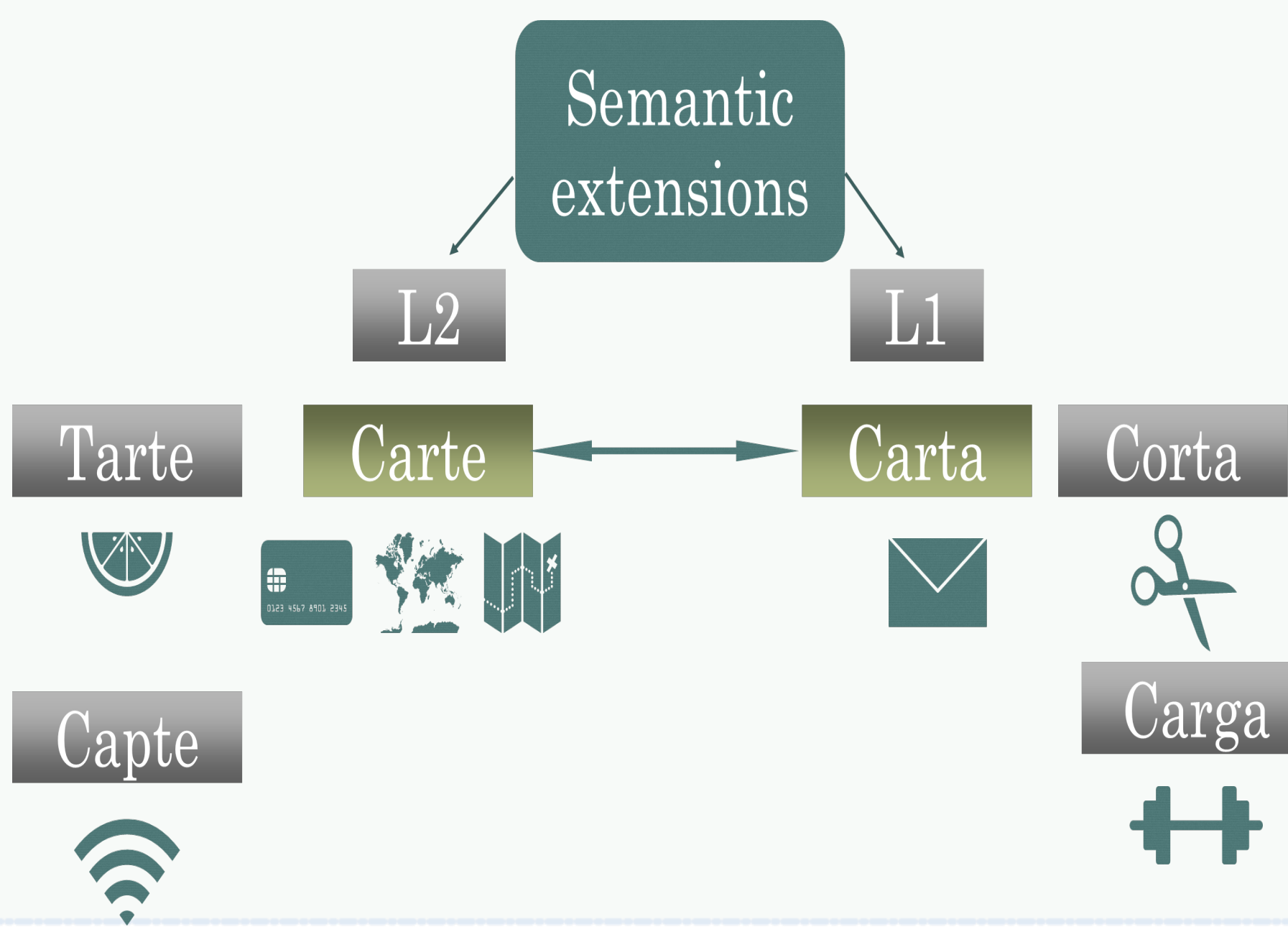
RATIONALE

Given that:

- 1) Bilingual's lexical networks differ from monolinguals regarding word frequency (Schmid, 2007; Malt & Sloman, 2003) and activation (Paradis, 2007) suggesting that cognates in L1 and L2 are co-activated.
- 2) There are differences concerning conceptual representations and words association (Dong, Gui & MacWhinney 2005 ; Pavlenko, 2009).

And that the following factors are involved in lexical retrieval:

- 1) Words with dense neighborhood are easier retrieved than words with dispersed neighborhood due to multiple accumulated sources of activation (Costa et al., 2006).
- 2) Independently of the orthographic and phonological intersections between languages morphology plays a role in processing (Frost & Grainger, 2000).



RESEARCH QUESTION

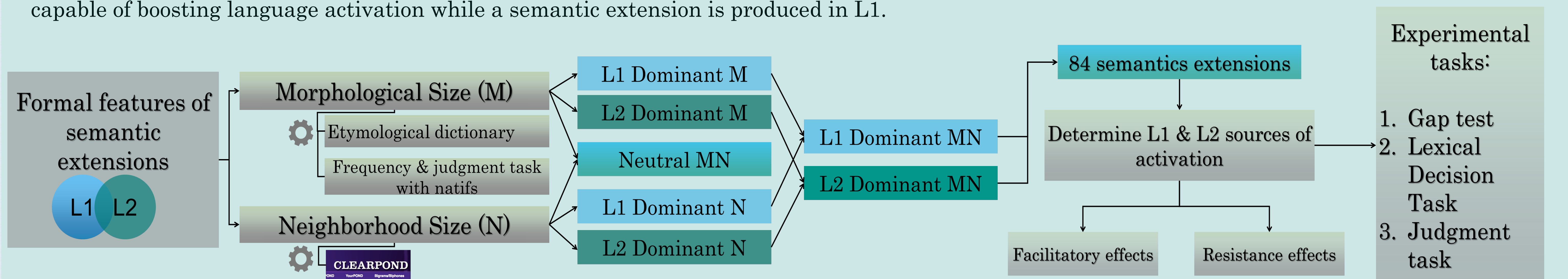
- Is acceptance of SE higher in bilinguals than in monolinguals?
- Are semantic extensions due to greater facility of processing, e.g., in lexical access?
- Is the process influenced by formal features (at the lexemic level) such as morphological family size and neighborhood density?

PARTICIPANTS

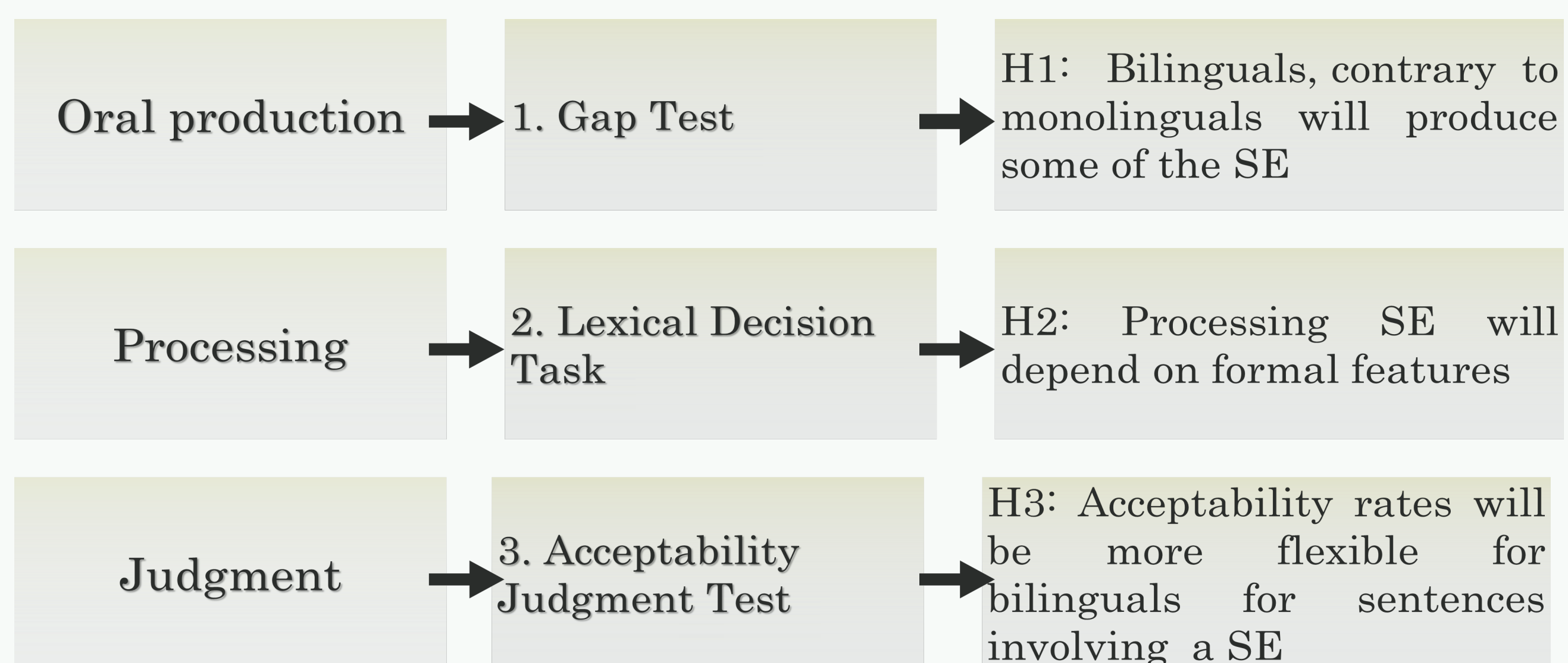
Groups	19 (50) late	53 monolinguals
Languages		
Age	mean: 28 min:21 max:43	mean:22 min:20 max:27
LOR	4,5 years	
Proficiency	L1 L2 (B2-C1)	L1

EXPERIMENTAL DESIGN

Studying the effects of interlingual neighborhood density and morphological family size will allow us to analyze whether or not formal features are capable of boosting language activation while a semantic extension is produced in L1.



EXPERIMENTAL TASK



PRELIMINARY RESULTS

	Bilinguals	Monolinguals
NA	18	18
Correct	372	347
Synonym	78	143
Semantic related	44	41
Plausible	17	28
Errors	3	8

Bilinguals	
SE	15
Switch to French	3
English translation	1
French translation	5
Phonological	2

RT:

-There are no significant differences between groups.

Errors:

- Bilinguals produce some SE as well as switches to French and literal translation words in Spanish.
- Bilinguals produce more synonyms than monolinguals which can be interpreted as a sign of lexical richness.
- Bilingual produce more target responses than monolinguals who use more paradigmatic plausible alternative responses.

Ahumada Ebratt, L. & Köpke, B. (2016). The restructuring competence of L1 in Spanish/ French late bilinguals: the semantic extensions. Poster presented at Third International Conference on Language Attrition (ICLA3), Colchester (GB), 5-7 July
 Costa, A., La Heij, W. & Navarrete, E. (2006). The dynamics of bilingual lexical access. *Bilingualism: language and cognition* 9,137-151.
 De Jong, Schreuder & Baayen (2000). The morphological family size effect and morphology. *Interfaculty Research Unit for Language and Speech, University of Nijmegen, The Netherlands. language and cognitive processes*, 15 (4/5), 329-365.
 Dong, Y., Gui, S. & MacWhinney, B. (2005). Shared and separate meanings in the bilingual mental lexicon. *Bilingualism: Language and Cognition*, 8, 221-238.
 Frost & Jonathan Grainger (2000). Cross-linguistic perspectives on morphological processing: An introduction. *language and cognitive processes*, 15 (4/5), 321-328
 Jarvis, S. (2009). Lexical transfer. In A. Pavlenko, (eds), *The bilingual mental lexicon : interdisciplinary approaches* (99-124) Bristol : Multilingual Matters.
 Malt, B. C. & Sloman, S. A. (2003). Linguistic diversity and object naming by non-native speakers of English. *Bilingualism: Language and Cognition*, 6, 47-67.
 Paradis, M. (2007). L1 attrition features predicted by a neurolinguistic theory of bilingualism. In B. Köpke, M. S. Schmid, M. Keijzer, & S. Dostert (Eds.), *Language attrition: Theoretical perspectives* (pp. 121-134). Amsterdam: John Benjamins.
 Pavlenko, A. (2009). Conceptual representation in the bilingual lexicon and second language vocabulary learning. In Pavlenko, A. (Ed.) *The bilingual mental lexicon: Interdisciplinary approaches*. Clevedon, UK: Multilingual Matters.
 Schmid, M. S. (2007). The role of L1 use for L1 attrition. In B. Köpke, M. S. Schmid, M. Keijzer & S. Dostert (Eds.), *Language attrition: theoretical perspectives* (pp. 135-153). Amsterdam: John Benjamins.