



**HAL**  
open science

## A rapid diagnostic multiplex PCR approach for xenomonitoring of human and animal schistosomiasis in a ‘One Health’ context

Ruben Schols, Hans Carolus, Cyril Hammoud, Stephen Mulero, Aspire Mudavanhu, Tine Huyse

### ► To cite this version:

Ruben Schols, Hans Carolus, Cyril Hammoud, Stephen Mulero, Aspire Mudavanhu, et al.. A rapid diagnostic multiplex PCR approach for xenomonitoring of human and animal schistosomiasis in a ‘One Health’ context. *Transactions of The Royal Society of Tropical Medicine and Hygiene*, 2019, 10.1093/trstmh/trz067 . hal-02281277

**HAL Id: hal-02281277**

**<https://hal.science/hal-02281277>**

Submitted on 12 Apr 2021

**HAL** is a multi-disciplinary open access archive for the deposit and dissemination of scientific research documents, whether they are published or not. The documents may come from teaching and research institutions in France or abroad, or from public or private research centers.

L’archive ouverte pluridisciplinaire **HAL**, est destinée au dépôt et à la diffusion de documents scientifiques de niveau recherche, publiés ou non, émanant des établissements d’enseignement et de recherche français ou étrangers, des laboratoires publics ou privés.

# A rapid diagnostic multiplex PCR approach for xenomonitoring of human and animal schistosomiasis in a ‘One Health’ context

Ruben Schols <sup>a</sup>, Hans Carolus <sup>a</sup>, Cyril Hammoud <sup>b,c</sup>, Stephen Mulero <sup>d</sup>, Aspire Mudavanhu <sup>e</sup> and Tine Huyse <sup>a,b,\*</sup>

<sup>a</sup>Laboratory of Biodiversity and Evolutionary Genomics, University of Leuven, 3000 Leuven, Belgium

<sup>b</sup>Department of Biology, Royal Museum for Central Africa, Leuvensesteenweg 13, 3080 Tervuren, Belgium

<sup>c</sup>Limnology Research Unit, Ghent University, K. L. Ledeganckstraat 35, 9000 Ghent, Belgium

<sup>d</sup>Laboratory of Host–Pathogen–Environment Interactions, IHPE UMR 5244, CNRS, University of Perpignan Via Domitia, 66100 Perpignan, France

<sup>e</sup>Department of Biological Sciences, University of Zimbabwe, Harare, Zimbabwe

\*Corresponding author: Tel: +32 2 769 5372; E-mail: [tine.huyse@afrikamuseum.be](mailto:tine.huyse@afrikamuseum.be)

## ABSTRACT

Studying the epidemiology of schistosomiasis—the most prevalent gastropod-borne human disease and an economic burden for the livestock industry—relies on adequate monitoring tools. Here we describe a molecular assay for detecting human and animal African schistosome species in their planorbid gastropod host (xenomonitoring) using a two-step approach. First, schistosome infections are detected and discriminated from other trematode infections using a multiplex polymerase chain reaction (PCR) that includes a trematode-specific marker (in 18S rDNA), a *Schistosoma* genus-specific marker (in internal transcribed spacer 2 [ITS2]) and a general gastropod marker (in 18S rDNA) as an internal control. Upon *Schistosoma* sp. detection, a second multiplex PCR is performed to discriminate among *Schistosoma haematobium*, *Schistosoma mansoni*, *Schistosoma mattheei* and *Schistosoma bovis/Schistosoma curassoni/Schistosoma guineensis* using markers of differential lengths in the cytochrome c oxidase subunit 1 (COX1) gene. The specificity of these assays was validated with adult worms, naturally infected gastropods and human urine and stool samples. Sensitivity was tested on experimentally infected snail specimens that were sacrificed 10 and 40 days post-infection in order to mimic a natural prepatent and mature infection, respectively. The assay provides a diagnostic tool to support the xenomonitoring of planorbid gastropods for trematode infections in a One Health context, with a focus on the transmission monitoring of schistosomiasis.

## KEYWORDS

gastropod-borne disease ; One Health ; rapid diagnostic multiplex PCR ; *Schistosoma* ; transmission monitoring ; Trematoda

## Introduction

Schistosomiasis is the most prevalent gastropod-borne infectious disease in the world and causes an estimated 1.5 billion disability-adjusted life years (DALY) annually.<sup>1</sup> The main pathology of *Schistosoma*-induced infections originates from migrating eggs that cause chronic lesions in a variety of organs.<sup>1</sup> An estimated 192 million (93%) of the worldwide estimated 207 million schistosomiasis cases occur in sub-Saharan Africa.<sup>2</sup> Animal *Schistosoma* species are estimated to infect >165 million bovines in Africa and Asia, leading to substantial economic losses.<sup>3</sup> Together with other gastropod-borne diseases like fascioliasis, echinostomiasis and amphistomiasis, animal schistosomiasis forms a major veterinary concern and an economic burden to the livestock industry by decreasing fertility, growth and calf survival.<sup>4,5</sup> *Schistosoma bovis*, *Schistosoma curassoni* and *Schistosoma mattheei* are the most common *Schistosoma* species to infect livestock across sub-Saharan Africa.<sup>4</sup> These species are also known to hybridize with *Schistosoma haematobium*, having important implications for schistosome epidemiology.<sup>6–8</sup> Besides the burden for human health and the livestock industry, trematodes can be very abundant in terrestrial and aquatic ecosystems, sometimes exceeding the total biomass of top predators,<sup>9</sup> thereby significantly affecting ecosystem health. Moreover, several domestic bovine schistosomes also infect wild herbivores, and hybrid strains are of zoonotic importance.<sup>4,7,8</sup> A ‘One Health’ approach focussing on both human and animal schistosomiasis (or trematodiasis in general) is therefore desired to efficiently map trematode distribution and effectively tackle trematodiasis outbreaks in both human, domesticated and wild animal populations.<sup>3</sup> Gastropod-borne diseases are confined by the distribution of the gastropod intermediate hosts. Insights into trematode infection rates in gastropods are thus of major epidemiological importance in trematode transmission studies. The classic method for diagnosing and quantifying trematode infections in gastropods is by inducing the natural emergence of cercariae, termed ‘shedding’. However, morphological identification of larval trematode stages in gastropods is highly error-prone and difficult to impossible for genus- or species-level identification, due to the lack of diagnostic morphological traits, phenotypic plasticity and the occurrence of cryptic species.<sup>10,11</sup> Moreover, shedding significantly underestimates the prevalence of both single and multiple species co - infections.<sup>12</sup> This can be the result of low infection load, immature (prepatent) infections or gastropod mortality during the shedding experiment.<sup>12,13</sup> Hence a reliable assessment of trematode infection prevalence requires a molecular diagnostic technique.<sup>12</sup> Molecular xenomonitoring (MX) is the screening of disease vectors or intermediate hosts for the genetic material of the pathogens they transmit.<sup>13</sup> There is an ongoing debate whether polymerase chain reaction (PCR) or loop-mediated isothermal amplification (LAMP) is preferred for field-sample diagnostics, as each method is characterized by specific advantages and disadvantages.<sup>14</sup> LAMP has proven to be a suitable method for detecting early prepatent infections in gastropod hosts.<sup>15</sup> With specificity 10 times higher than the classic PCR, LAMP requires minimal equipment and is regarded as a fast, sensitive and cheap tool for field diagnosis.<sup>15,16</sup> However, false negative results are observed in LAMP assays as a consequence of the method’s high sensitivity to inhibition by reagents used during deoxyribonucleic acid (DNA) extraction.<sup>15</sup> Moreover, when compared with PCR, LAMP presents less versatility for multiplexing approaches.<sup>17</sup> Diagnostic multiplex PCR is a technique in which multiple genetic markers of differential length are amplified, allowing species-level identification up to species level. In this way, gastropod tissue samples can be screened for different trematode infections by separating the amplified DNA according to its length through agarose gel electrophoresis.<sup>18,19</sup> Rapid diagnostic PCR (RD-PCR) refers to the use of PCR for direct diagnosis without the need for DNA sequencing, thus saving time and cutting costs.

Here we describe two PCR protocols that can be combined to identify infections by the most common African human- and livestock-infecting *Schistosoma* species in their planorbid

gastropod host. The first multiplex PCR is an adaptation of the RD-PCR for screening *Fasciola* sp. infections in lymnaeid gastropods described by Carolus et al.,<sup>20</sup> in which we added primers for *Schistosoma* sp. detection in planorbids. This PCR screens for general trematode infections (all trematodes) and for infections with all species belonging to the *Schistosoma* genus, while amplifying an internal control to avoid false negative PCR results. When positive for *Schistosoma* sp. infection, the second multiplex PCR can be applied to discriminate *S. haematobium*, *S. mansoni* and *S. mattheei* from infections of *S. bovis*, *S. curassoni* and *S. guineensis*. This second RD-PCR is an optimization of the assays described by Webster et al.<sup>19</sup> that differentiates *S. haematobium* from *S. bovis* and from Van den Broeck et al.<sup>21</sup> that added a *S. mansoni*-specific primer to this assay. Here we added a newly designed reverse primer to differentiate *S. mattheei*, a bovine and occasionally human-infecting schistosome that is prevalent in southern Africa and is known to share common gastropod hosts with *S. haematobium*, *S. bovis* and *S. intercalatum*.<sup>4,6</sup>

## **Materials and methods**

### **Samples and DNA extraction**

To test and optimize the multiplex PCR assays we used experimentally infected gastropods (see ‘Sensitivity testing’), naturally infected gastropods from the collection of the Royal Museum for Central Africa (RMCA, Tervuren, Belgium) and human urine and stool samples that tested positive for a *S. haematobium* and *S. mansoni* infection, respectively. The latter samples originate from a previous study in Senegal on schistosomiasis epidemiology, transmission and control (For more information see Van den Broeck et al.<sup>21</sup> and Meurs et al.<sup>22</sup>). The naturally infected gastropods were collected in an ongoing study in South Africa and Zimbabwe (unpublished data). In both field studies, gastropods were tested for infection by means of shedding experiments and different cercarial types that were released after light stimulus were stored in ethanol and barcoded. For snail DNA extraction, whole soft tissue was separated from the shell, ethanol was removed and the tissue was subsequently homogenized with a sterile scalpel. The total DNA of homogenates was extracted using the E.Z.N.A. Mollusc DNA Kit (OMEGA Bio-tek, Norcross, GA, USA), specially designed for DNA extraction from tissue rich in mucopolysaccharides. All DNA extracts were stored at  $-20^{\circ}\text{C}$  after being diluted by a factor 10 in Milli-Q water (Merck, Darmstadt, Germany).

### **Primer design**

The new COX1 and ITS2 primers were designed and tested *in silico* in Geneious 6.1.8 software (Geneious, Auckland, New Zealand) on alignments of gastropod and trematode sequences (representatives from all genera of African trematodes and for each species of *Schistosoma* available on GenBank Supplementary Table 1) downloaded from the National Center for Biotechnology Information (NCBI) GenBank (<https://www.ncbi.nlm.nih.gov/>). Primers included in the same multiplex PCR were analysed together *in silico* to predict the formation of potential primer dimers using the Thermo Fisher Scientific Multiple Primer Analyzer (online tool, <https://www.thermofisher.com>). The target region, length and sequence of each primer used are described in Table 1. Primer pairs were subsequently tested in simplex and multiplex PCR on gastropod specimens with known infection status in the two-step approach. In the first PCR, referred to as ‘infection RD-PCR’, three markers are amplified. Carolus et al.<sup>20</sup> tested and described the use of the general trematode and gastropod internal control markers. This assay was adapted for *Schistosoma* detection via the addition of the newly designed *Schistosoma* sp. primer pair.

The second PCR, referred to as the ‘*Schistosoma* RD-PCR’, was designed for species discrimination of certain *Schistosoma* species and is only applied upon *Schistosoma* sp. detection in the infection RD-PCR. A universal forward primer, Asmit1,<sup>23</sup> is combined with species-specific reverse primers (Sh.R for *S. haematobium*, Sman.R for *S. mansoni*, Smat.R for *S. mattheei* and Sb.R for *S. bovis*/*S. curassoni*/*S. guineensis*) that target markers of different lengths in the mitochondrial cytochrome c oxidase subunit 1 (COX1) gene. This is an optimization of the protocol described in Van den Broeck et al.,<sup>21</sup> originally based on Webster et al.,<sup>19</sup> by adding a newly designed *S. mattheei*-specific primer. The species-specific reverse primers amplify bands of *S. haematobium* (543 bp), *S. mansoni* (375 bp), *S. mattheei* (362 bp) and *S. bovis*/*S. curassoni*/*S. guineensis* (306 bp), respectively. A schematic representation of the target regions on COX1 and the respective positions of the different primers are presented in Figure 1.

### PCR amplification and visualisation

All PCR reactions were performed in a 15 µL volume with 2 µL undiluted gastropod DNA extract using the Multiplex Taq DNA polymerase kit (Qiagen, Venlo, The Netherlands). Primer concentrations in the final volume were 0.2 µM 18S\_Digenea\_F and 18S\_Digenea\_R, 0.1 µM 18S\_SNAIL\_F and 18S\_SNAIL\_R and 0.6 µM ITS2\_Schisto\_F and ITS2\_Schisto\_R in the infection RD-PCR. The *Schistosoma* RD-PCR primer concentrations in the final volume were 0.8 µM of Asmit1 universal forward primer<sup>23</sup> and 0.3 µM of each reverse primer (Sh.R, Sb.R, Sman.R and the newly designed Smat.R primer, respectively). Both PCR protocols are performed with initial denaturation at 95°C for 3 min, 39 cycles of 94°C for 30 s, 62°C for 45 s, 72°C for 45 s and a final elongation step at 72°C for 10 min in a TProfessional Thermal Cycler (Biometra, Göttingen, Germany). Analysis of the PCR product was carried out by gel electrophoresis for 1 h 45 min at 120 V in a 3% agarose gel with Midori Green direct staining and visualization using ultraviolet light.

### Validation and specificity testing

The specificity of the infection RD-PCR primers was tested on a variety of infected gastropod species from the RMCA museum collection: *Biomphalaria pfeifferi* infected with *S. mansoni*, *B. pfeifferi* infected with *Uvulifer* sp., *Bulinus globosus* infected with *Petasiger* sp., *Bulinus africanus* infected with *S. mattheei*, *B. africanus* with a double infection of *S. mattheei* and *Petasiger variospinosus*, *Lymnaea natalensis* infected with *P. variospinosus* and *L. natalensis* infected with *Echinostoma* sp. Infections were confirmed by sequencing COX1, ITS and 18S rDNA of the trematode infections as described in Carolus et al.<sup>20</sup> The specificity of the *Schistosoma* RD-PCR was tested using DNA of *S. bovis*, *S. curassoni* and *S. guineensis* (adult worm DNA provided by Dr Bonnie L. Webster), *S. mansoni* and *S. haematobium* (from human stool and urine samples, respectively), *S. mattheei* (cercariae from an infected *B. africanus* gastropod) and *S. edwardiense* (from an infected *Biomphalaria* sp.). The specificity of the primers Sh.R, Sb. R and Sman.R with *S. intercalatum*, *S. margrebowiei*, *S. leiperi* and *S. rodhaini* was already tested by Webster et al.<sup>19</sup> and Van den Broeck et al.<sup>21</sup>. The new Smat.R primer was *in silico* tested for annealing with other schistosome COX1 sequences obtained from NCBI GenBank while using Geneious 6.1.8 software (Supplementary Table 1).

The following parameters were assessed to validate both PCR assays: *in silico* specificity of all primers, trematode species specificity of infections in different gastropod species, the capability to detect *Schistosoma* spp. infections in case of co-infection and the probability of false positive and false negative results. Both PCR protocols were tested at annealing temperatures of 58°C, 62°C and 65°C to validate temperature-dependent specificity and optimal annealing conditions.

## Sensitivity testing

The sensitivity of both PCR protocols was tested using pure DNA extracts of *Biomphalaria glabrata* experimentally exposed to *S. mansoni* and serial dilutions thereof. The experimentally infected gastropods comprised two *B. glabrata* from Brazil individually exposed to a single miracidium of *S. mansoni* from Brazil for 24 h. These gastropods were maintained at a temperature of around 25°C, with a 12 h/12 h photoperiod and fed ad libitum, after which they were sacrificed at 10 and 40 d postmoniracidial exposure. We prefer this method over artificially mixed host and parasite DNA, as it better reflects natural infection dynamics. The gastropods were removed from their shell and preserved in 95% ethanol. The concentration of DNA in the original DNA extract was measured using Qubit Fluorometric Quantitation (Thermo Fisher Scientific, Waltham, MA, USA). A dilution series of 10 ng, 1 ng, 100 pg, 10 pg, 1 pg, 100 fg, 10 fg and 1 fg DNA per microliter was made and PCR protocols were run.

## Results

### Validation and specificity

The infection RD-PCR was validated using different gastropods with and without *Schistosoma* sp. infections. Figure 2 shows the expected amplicons in an uninfected gastropod (*Bulinus* sp.) and gastropods infected with *Schistosoma* sp. (*B. pfeifferi* infected with *S. mansoni*) and non-*Schistosoma* trematodes (*B. globosus* infected with *Petasiger* sp.). DNA extracts of *B. africanus* infected with *S. mattheei*, *B. africanus* with a double infection of *S. mattheei* and *Petasiger variospinosus*, *L. natalensis* infected with *P. variospinosus*, *L. natalensis* infected with *Echinostoma* sp. and *B. pfeifferi* infected with *Uvulifer* sp. all show the expected signals with the amplicon length corresponding to the internal control and general trematode markers (results not shown). The *Schistosoma* RD-PCR was shown to be a reliable diagnostic tool to identify infections of *S. mansoni*, *S. haematobium* and *S. mattheei* to the species level and to discriminate these species from *S. bovis*, *S. curassoni* and *S. guineensis*, as shown in Figure 3. The newly designed *S. mattheei* reverse primer (Smat.R) can specifically detect *S. mattheei* infections in their planorbid gastropod host, while it did not amplify in DNA samples from *S. haematobium*, *S. edwardiense*, *S. mansoni*, *S. bovis*, *S. curassoni* and *S. guineensis*. Due to a lack of DNA templates for the remaining *Schistosoma* species, we tested the specificity of the Smat.R primer *in silico*. These tests showed that the primer has at least 22.7% mismatching base pairs with all other schistosome species except for *S. nasale* (13.6%; only occurring in Asia), *S. edwardiense* (13.6%) and *S. hippopotami* (18.2%). The fact that it did not amplify in our *S. edwardiense* DNA sample, which showed 13.6% mismatching base pairs, suggests that it will also most likely not amplify in the remaining schistosome species, which show more mismatching base pairs. The *S. bovis* reverse primer (Sb.R) also amplified in the closely related species *S. guineensis* and *S. curassoni*, as already pointed out by Webster et al. 19 (see below).

Both RD-PCR protocols show optimal amplification and specificity at 62°C (results not shown). We note the presence of aspecific amplification in some instances, as shown in Figure 2 (band D). We are confident that this is not the result of a co-infection, as it is also present in the experimentally infected gastropod (40-d infection) in Figure 4A. Also, its presence does not interfere with the interpretation of the infection status.

### Sensitivity

The results for the sensitivity assays of the infection RD-PCR are shown in Figure 4A. The detection limit of the *Schistosoma* sp. marker in the experimentally infected *B. glabrata* was 1 ng/μL for an infection of 10 d and 10 pg/μL for a 40-day-old infection, respectively. The fact that the signal intensifies in the 40-d postexposure treatment compared with the 10-d post-

exposure condition shows development and replication of *S. mansoni* within the snail during the course of infection. The general trematode marker showed a slightly higher sensitivity compared with the *Schistosoma* sp. marker and was still detectable in a total DNA dilution of 1 pg/ $\mu$ L and 100 fg/ $\mu$ L for an infection of 10 d and 40 d, respectively. The sensitivity of the *S. haematobium* and *S. bovis* primer pairs of the *Schistosoma* RD-PCR was rigorously tested by Webster et al.<sup>19</sup> In Figure 4B we show that the limit of detection in the *Schistosoma* RD-PCR is 100 pg/ $\mu$ L and 10 pg/ $\mu$ L for 10- and 40-day-old *S. mansoni* infections, respectively.

## Discussion

Molecular methods are indispensable for both trematode species discrimination<sup>10,11</sup> and infection prevalence assessment.<sup>12</sup> Because of their sensitivity and specificity, PCR-based techniques can be regarded as one of the most reliable, and perhaps the golden standard, of diagnostic tools for detecting specific trematode species in their intermediate host, so-called xenomonitoring.<sup>12–14,16</sup> Here we have developed a two-step approach to firstly detect trematode infections and then to discriminate the *Schistosoma* spp. involved in the gastropod infections. The 18S rDNA gene was chosen to design an internal control and a trematode-specific marker<sup>20</sup> since it is a highly conserved region, ideal for the diagnosis of higher taxonomic levels such as the class Trematoda.<sup>10,24</sup> The ITS2 region was targeted for *Schistosoma* sp. infection diagnosis because it is more variable and is capable of providing genus-specific primer annealing sites.<sup>25</sup> The infection RD-PCR was proven to be a valid diagnostic approach regarding its specificity: *Schistosoma*-specific bands in gastropods with a double trematode infection including *Schistosoma* sp. indicate that a second trematode infection in the gastropod sample does not interfere with the detection capabilities of the infection RD-PCR method. This proves its usefulness in the diagnostic screening of field-collected gastropods, in which co-infections commonly occur.<sup>12</sup> The combination of the *Schistosoma*-specific and general trematode markers in the infection RD-PCR is also a highly valuable combination to simultaneously detect *Schistosoma* and other economically significant trematodes such as *Paramphistomoidea* (a major superfamily of trematodes that infect livestock) and *Diplostomoidae* (a superfamily of trematodes that infect birds and fish) that use the same planorbid hosts as schistosomes.<sup>4,26</sup>

The *Schistosoma* RD-PCR, on the other hand, is based on COX1, a marker that is extensively used for species-level identification of animals, as this haploid-inherited mitochondrial gene evolves rapidly compared with nuclear genes in the context of speciation.<sup>27</sup> In the *Schistosoma* RD-PCR, at least three species of *Schistosoma* occurring in sympatry can readily be detected

(i.e. *S. mansoni*, *S. haematobium* and *S. mattheei*). This is an optimization of the protocol described by Van den Broeck et al.,<sup>21</sup> based initially on Webster et al.,<sup>19</sup> in which *S. mattheei*, one of the most important livestock schistosomes in Africa, could not be discriminated. Our new Smat.R primer appears highly specific: it did not amplify in *S. haematobium*, *S. edwardiense*, *S. mansoni*, *S. bovis*, *S. curassoni* or *S. guineensis*. Ideally, specificity tests should be conducted on all *Schistosoma* spp. but the fact that it did not amplify in *S. edwardiense*, which showed 13.6% mismatching base pairs with Smat.R, suggests that it will most likely not amplify in the remaining schistosome species, which show more mismatching base pairs in the primer annealing region. We confirmed amplification of the previously published primer Sb.R in *S. guineensis* and *S. curassoni*. This is due to their close phylogenetic relationship with *S. bovis* and the associated lack of sufficient COX1 sequence variability for primer design.<sup>19</sup> Increasing the annealing temperature to 65°C resolves this cross amplification but decreases the sensitivity of the protocol, as tested by Webster et al.<sup>19</sup> *S. curassoni* and *S. bovis* infect livestock while *S. guineensis* infects humans in confined regions of West Africa.<sup>4</sup> In the few geographic areas where *S. bovis*, *S. curassoni* and *S. guineensis* occur in sympatry, amplicon

sequencing should confirm the identity of these species, as suggested by Webster et al.<sup>19</sup> We can conclude that the optimized *Schistosoma* RD-PCR allows identification of the most common human schistosome species present in Africa (*S. mansoni* and *S. haematobium*) from those that infect livestock (*S. bovis*, *S. curassoni* and *S. mattheei*) in areas where *S. guineensis* is not present. It can be applied on stool or urine samples or on snail samples.

The serial dilution of DNA from lab-reared *B. glabrata* gastropods exposed to *S. mansoni* showed that the PCR assays can detect parasite DNA in both mature (40-day-old) and prepatent (10-day-old) gastropod infections at DNA concentrations below the values usually obtained after DNA extraction. The general trematode marker of the infection RD-PCR appeared to be the most sensitive marker, being 100 times more sensitive (for 40-day-old infections) than the *Schistosoma*-specific marker used in the same assay, and the *Schistosoma* RD-PCR. In all the assays, the detection limit increased 10- to 100-fold in 40-day-old infections compared with 10-day-old infections. Trematodes reproduce asexually within the gastropod host, so the relative abundance of trematode DNA increases with the age of the infection. The high sensitivity of this diagnostic multiplex RD-PCR approach suggests that this assay might also be a reliable diagnostic tool for the detection of trematode DNA in human excreta (see Figure 3), as also indicated by Van den Broeck et al.,<sup>21</sup> although standardized sensitivity and specificity tests are needed to validate this.

The infection RD-PCR described here is the first diagnostic PCR protocol for monitoring gastropod-borne trematode infections that includes a combination of an internal control, a general trematode marker and a *Schistosoma*-specific marker. The use of an internal control is an important asset in PCR-based diagnostics, because it excludes false negative results that commonly occur due to PCR inhibitors, failed DNA extractions, malfunctioning of thermal cyclers or an inconsistency in the preparation of the PCR mixture.<sup>28,29</sup> Especially in studies where the sample size is large but the infection rate is low, false negative results can have a significant influence on the epidemiological conclusions drawn.<sup>29</sup> We propose that an internal control should be a standard component of a diagnostic PCR protocol that is used in epidemiological studies of gastropod-borne diseases.

The absence of an internal control in the *Schistosoma* RDPCR is justified through the two-step approach. Samples that, for example, would give a positive *Schistosoma* signal in the infection RD-PCR but fail to amplify a marker in the *Schistosoma* RD-PCR indicate an infection with a *Schistosoma* species other than the species accounted for in our *Schistosoma* RD-PCR, such as *S. leiperi* or *S. margrebowiei*. In that case, the identity of the infective *Schistosoma* species can be resolved by sequencing the amplicon of the infection RD-PCR.

The use of a general trematode marker is an interesting addition to standard PCR assays that only focus on one genus, such as *Fasciola* sp.<sup>20,29</sup> or *Schistosoma* sp.<sup>16,19</sup> Other taxa that potentially form a threat to humans and domesticated or wild animals are not detected in these studies and thus remain unexplored. Including a general trematode marker, although invaluable in one study (e.g. the schistosomiasis monitoring program), can be extremely valuable for other study groups that focus on other particular trematodiasis (e.g. fish trematodiasis).

This approach fits into the One Health framework for studying neglected tropical diseases. Since trematodiasis affect the health of humans, livestock (such as cattle and farmed fish) and wild animals, they can be regarded as a burden for public, economic and environmental health. Also, the *Schistosoma* RDPCR fits the One Health approach as it identifies human and animal schistosomes. Both assays will therefore support the monitoring of trematode infections in different types of field samples.



**Authors' contributions:**

RS, HC and TH conceived the study. RS, HC, SM and TH designed the study protocol. RS, HC, CH and TH carried out the RD-PCR assays and analysed and interpreted the data. RS and HC drafted the manuscript. CH, SM, AM and TH critically revised the manuscript for intellectual content. RS and HC contributed equally to this work. All authors read and approved the final manuscript.

**Acknowledgements:**

We thank our colleagues from the University of Perpignan for the experimental infection of gastropod specimens, which were used in sensitivity screening. Furthermore, we would like to thank Tom Pennance and Bonnie L. Webster for their constructive comments, and thank Bonnie L. Webster and the Schistosomiasis Collection at the Natural History Museum (SCAN, London, UK) for providing the *S. haematobium*, *S. bovis*, *S. curassoni* and *S. guineensis* adult worms.

**Funding:**

This work was funded by the Belgian Federal Science Policy Office (BRAIN-be Pioneer Project BR/165/PI/TRAIL) and the project S1\_ZMB\_SNAILS\_SUPPORT 2017 of the annual programme of the Cooperation Agreement dd.18.06.07 between the Belgian Development Cooperation and the Royal Museum for Central Africa. CH is funded by an FWO fellowship grant of the Research Foundation–Flanders (FWO–Vlaanderen).

**Competing interests:**

None declared.

**Ethical approval:**

All experiments were performed according to the French national ethical standards established in 1 February 2013 (NOR: AGRG1238753A). Authorization was received from the French Ministere de l'Agriculture et de la Peche and the French Ministere de l'Education Nationale de la Recherche et de la technologie, permit A66040 (authorization 007083, decree 87-848).

## References

- 1 Gryseels B, Polman K, Clerinx J, et al. Human schistosomiasis. *Lancet*. 2006;368(9541):1106–18.
- 2 Steinmann P, Keiser J, Bos R, et al. Schistosomiasis and water resources development: systematic review, meta-analysis, and estimates of people at risk. *Lancet Infect Dis*. 2006;6(7):411–25.
- 3 Gower CM, Vince L, Webster JP. Should we be treating animal schistosomiasis in Africa? The need for a one health economic evaluation of schistosomiasis control in people and their livestock. *Trans R Soc Trop Med Hyg*. 2017;111(6):244–7.
- 4 Toledo R, Fried B, editors. *Digenetic trematodes*. New York: Springer; 2014.
- 5 You H, Cai P, Tebeje B, et al. Schistosome vaccines for domestic animals. *Trop Med Infect Dis*. 2018;3(2):68.
- 6 Mahmoud AF, editor. *Schistosomiasis*. London: Imperial College Press; 2001.
- 7 Huyse T, Webster BL, Geldof S, et al. Bidirectional introgressive hybridization between a cattle and human schistosome species. *PLoS Pathog*. 2009;5(9):e1000571.
- 8 Leger E, Webster JP. Hybridizations within the genus *Schistosoma*: implications for evolution, epidemiology and control. *Parasitology*. 2017;144(1):65–80.
- 9 Kuris AM, Hechinger RF, Shaw JC, et al. Ecosystem energetic implications of parasite and free-living biomass in three estuaries. *Nature*. 2008;454(7203):515–8.
- 10 Nolan MJ, Cribb TH. The use and implications of ribosomal DNA sequencing for the discrimination of digenean species. *Adv Parasitol*. 2005;60:101–63.
- 11 Moszczyńska A, Locke SA, McLaughlin JD, et al. Development of primers for the mitochondrial cytochrome c oxidase I gene in digenetic trematodes (Platyhelminthes) illustrates the challenge of barcoding parasitic helminths. *Mol Ecol Resour*. 2009;9(Suppl s1):75–82.
- 12 Born-Torrijos A, Poulin R, Raga J, et al. Estimating trematode prevalence in snail hosts using a single-step duplex PCR: how badly does cercarial shedding underestimate infection rates? *Parasit Vectors*. 2014;7:243.
- 13 Caron Y, Rondelaud D, Losson B. The detection and quantification of a digenean infection in the snail host with special emphasis on *Fasciola* sp. *Parasitol Res*. 2008;103(4):735–44.
- 14 Pilotte N, Unnasch TR, Williams TA. The current status of molecular xenomonitoring for lymphatic filariasis and onchocerciasis. *Trends Parasitol*. 2017;33(10):788–98.
- 15 Fernández-Soto P, Gandasegui J, Sánchez HA, et al. A loop-mediated isothermal amplification (LAMP) assay for early detection of *Schistosoma mansoni* in stool samples: a diagnostic approach in a murine model. *PLoS Negl Trop Dis*. 2014;8(9):e3126.
- 16 Hamburger J, Abbasi I, Kariuki C, et al. Evaluation of loop-mediated isothermal amplification suitable for molecular monitoring of schistosome-infected snails in field laboratories. *Am J Trop Med Hyg*. 2013;88(2):344–51.
- 17 Gandasegui J, Fernández-Soto P, Hernández-Goenaga J, et al. Biompha-LAMP: a new rapid loop-mediated isothermal amplification assay for detecting *Schistosoma mansoni* in *Biomphalaria glabrata* snail host. *PLoS Negl Trop Dis*. 2016;10(12):e0005225.
- 18 Sahoo PR, Sethy K, Mohapatra S, et al. Loop mediated isothermal amplification: An innovative gene amplification technique for animal diseases. *Vet World*. 2016;9(5):465–9.
- 19 Webster BL, Rollinson D, Stothard JR, et al. Rapid diagnostic multiplex PCR (RD-PCR) to discriminate *Schistosoma haematobium* and *S. bovis*. *J Helminthol*. 2009;84(1):107–14.
- 20 Carolus H, Muzarabani KC, Hammoud C, et al. A cascade of biological invasions and parasite spillback in man-made Lake Kariba. *Sci Total Environ*. 2019;659:1283–92.

- 21** Van den Broeck F, Geldof S, Polman K, et al. Optimal sample storage and extraction protocols for reliable multilocus genotyping of the human parasite *Schistosoma mansoni*. *Infect Genet Evol.* 2011;11 (6):1413–8.
- 22** Meurs L, Mbow M, Boon N, et al. Micro-geographical heterogeneity in *Schistosoma mansoni* and *S. haematobium* infection and morbidity in a co-endemic community in northern Senegal. *PLoS Negl Trop Dis.* 2013;7(12):e2608.
- 23** Littlewood DTJ, Rohde K, Clough KA. Parasite speciation within or between host species? Phylogenetic evidence from site-specific polystome monogeneans. *Int J Parasitol.* 1997;27(11):1289–97.
- 24** Routtu J, Grunberg D, Izhar R, et al. Selective and universal primers for trematode barcoding in freshwater snails. *Parasitol Res.* 2014; 113(7):2535–40.
- 25** Prokopowich CD, Gregory TR, Crease TJ. The correlation between rDNA copy number and genome size in eukaryotes. *Genome.* 2003;46(1):48–50.
- 26** Laidemitt MR, Zawadzki ET, Brant SV, et al. Loads of trematodes: discovering hidden diversity of paramphistomoids in Kenyan ruminants. *Parasitology.* 2017;144(2):131–47.
- 27** Hebert PDN, Cywinska A, Ball SL, et al. Biological identifications through DNA Barcodes. *Proc Biol Sci.* 2003;270(1512):313–21.
- 28** Hoorfar J, Cook N, Malorny B, et al. Diagnostic PCR: making internal amplification control mandatory. *Lett Appl Microbiol.* 2004;38(2): 79–80.
- 29** Caron Y, Righi S, Lempereur L, et al. An optimized DNA extraction and multiplex PCR for the detection of *Fasciola* sp. in lymnaeid snails. *Vet Parasitol.* 2011;178(1–2):93–9.

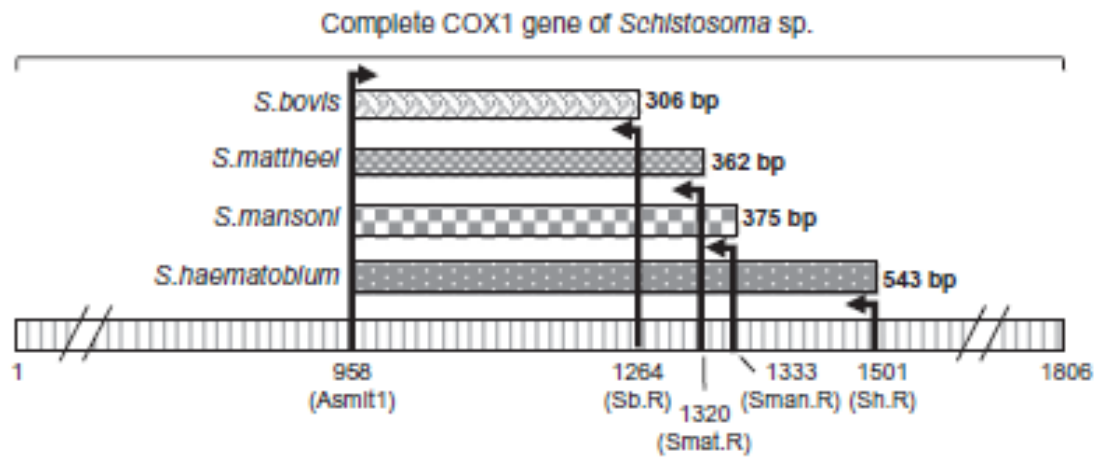
**Table 1.**

Primers used in the multiplex RD-PCR protocols. The primer sequences and names are given along with the targeted marker, target organism and length of the amplicon (length in the number of nucleotides). The symbol ‘±’ indicates a possible variation in amplicon length because of interspecific variation

Primer name	Primer sequence (5'–3')	Marker	Length	Target organism	Published by
Infection RD-PCR					
18S_SNAIL_F	AGTATGGTTGCAAAGCTGAACTTA	18S	±500	Gastropoda spp.	Carolus et al. <sup>20</sup>
18S_SNAIL_R	TACAAAGGGCAGGGACGTAAT				
18S_Digenea_F	CAGCTATGGTTCCTTAGATCRTA	18S	±392	Trematoda spp.	Carolus et al. <sup>20</sup>
18S_Digenea_R	TATTTTTCGTCACCTACCTCCCCGT				
ITS2_Schisto_F	GGAAACCAATGTATGGGATTATTG	ITS2	±369	<i>Schistosoma</i> spp.	This study
ITS2_Schisto_R	ATTAAGCCACGACTCGAGCA				
Schistosoma RD-PCR					
Asmit1	TTTTTTGGTCATCCTGAGGTGTAT	COX1	–	<i>Schistosoma</i> spp.	Littlewood et al. <sup>23</sup>
Sh.R	TGATAATCAATGACCCCTGCAATAA		543	<i>S. haematobium</i>	Webster et al. <sup>19</sup>
Sman.R	TGCAGATAAAGCCACCCCTGTG		375	<i>S. mansoni</i>	Van den Broeck et al. <sup>21</sup>
Smat.R	CACCAGTTACACCAACACAGA		362	<i>S. mattheei</i>	This study
Sb.R	CACAGGATCAGACAAACGAGTACC		306	<i>S. bovis</i>	Webster et al. <sup>19</sup>

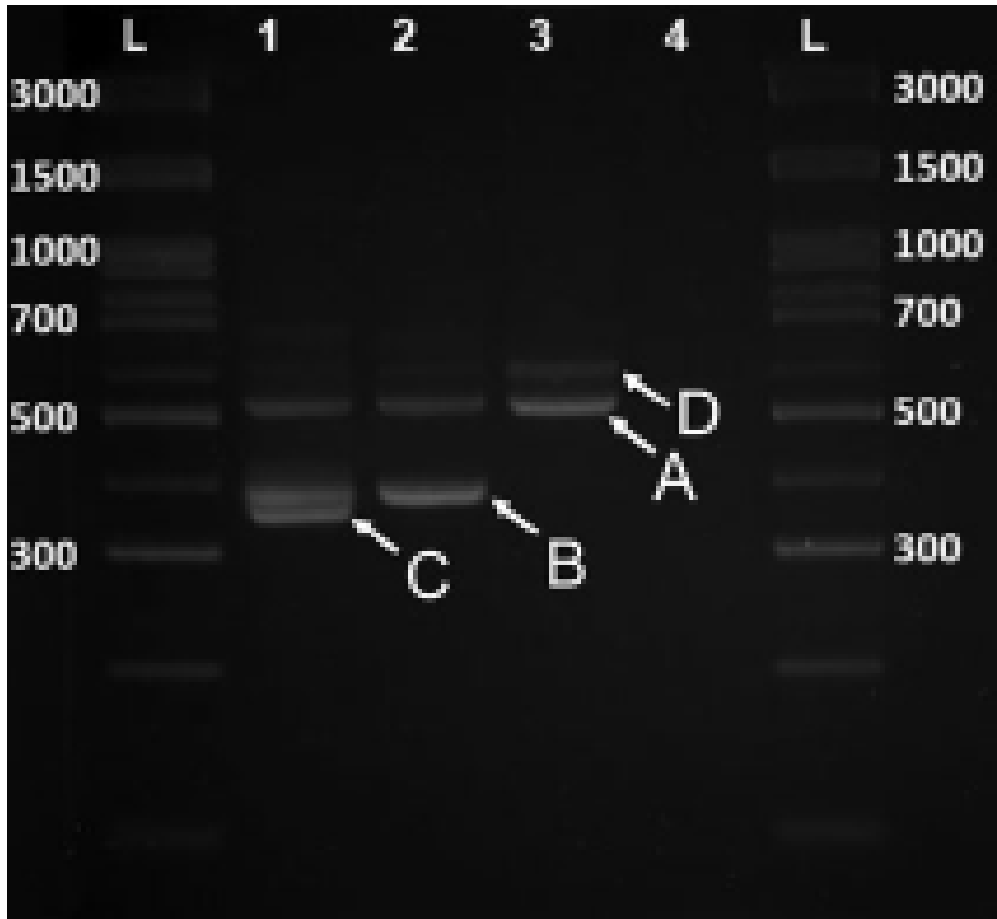
**Figure 1.**

Schematic representation of the primers used in the *Schistosoma* RD-PCR and the primer location within the COX1 gene.



**Figure 2.**

Results of the infection RD-PCR assay containing different gastropod species with a variety of infections. The arrows and corresponding letters indicate the three different markers: (A) the internal control (~500 base pairs [bp]), (B) the general trematode marker (~392 bp) and (C) the *Schistosoma* sp. marker (~369 bp) as well as (D) aspecific amplicon. Lane 1 contains DNA of *B. pfeifferi* infected with *S. mansoni*, lane 2 contains *B. globosus* infected with *Petasiger* sp., lane 3 contains an uninfected *Bulinus* sp. and lane 4 contains a negative-PCR control (water). L: DNA ladder (300–3000 bp).



**Figure 3.**

The *Schistosoma* RD-PCR results for *S. haematobium* (543 base pairs [bp]) in lane 1, *S. mansoni* (375 bp) in lane 2, *S. mattheei* (362 bp) in lane 3, *S. bovis* (306 bp) in lane 4, *S. curassoni* (306 bp) in lane 5 and *S. guineensis* (306 bp) in lane 6. Lane 7 contains a DNA extract from a field-caught, uninfected *B. africanus*. *S. bovis*, *S. guineensis* and *S. curassoni* DNA originates from isolated adult worm specimens, the *S. haematobium* extract originates from an infected human urine sample, the *S. mansoni* extract originates from an infected human stool sample and the *S. mattheei* DNA originates from an infected field-caught *B. africanus*. Species identity was confirmed by genotyping in all samples used. L: DNA ladder (300–3000 bp).



**Figure 4.**

Sensitivity experiment for the (A) infection RD-PCR and (B) *Schistosoma* RD-PCR using experimentally infected *B. glabrata* with *S. mansoni*, sacrificed after 10 d (in lanes 1–9) or 40 d (in lanes 10–18) post-monomiracidal exposure. Both DNA extracts were used in undiluted form (total DNA concentration was 32.8 ng/ $\mu$ L 10 d post-infection and 76.7 ng/ $\mu$ L 40 d post-infection) and a dilution series of 10 ng (lanes 2 and 11), 1 ng (lanes 3 and 12), 100 pg (lanes 4 and 13), 10 pg (lanes 5 and 14), 1 pg (lanes 6 and 15), 100 fg (lanes 7 and 16), 10 fg (lanes 8 and 17) and 1 fg (lanes 9 and 18) per microliter. L: DNA ladder (300–3000 bp).

