



HAL
open science

Towards a full model for ocular biomechanics, fluid dynamics, and hemodynamics

Lorenzo Sala, Christophe Prud'Homme, Marcela Szopos, Giovanna Guidoboni

► To cite this version:

Lorenzo Sala, Christophe Prud'Homme, Marcela Szopos, Giovanna Guidoboni. Towards a full model for ocular biomechanics, fluid dynamics, and hemodynamics. *Journal for Modeling in Ophthalmology*, 2018, 2, pp.7-13. hal-02278854

HAL Id: hal-02278854

<https://hal.science/hal-02278854>

Submitted on 6 Sep 2019

HAL is a multi-disciplinary open access archive for the deposit and dissemination of scientific research documents, whether they are published or not. The documents may come from teaching and research institutions in France or abroad, or from public or private research centers.

L'archive ouverte pluridisciplinaire **HAL**, est destinée au dépôt et à la diffusion de documents scientifiques de niveau recherche, publiés ou non, émanant des établissements d'enseignement et de recherche français ou étrangers, des laboratoires publics ou privés.

Towards a full model for ocular biomechanics, fluid dynamics and hemodynamics

L. Sala¹, C. Prud'homme¹, M. Szopos¹, G. Guidoboni¹.

¹IRMA UMR 7501, CNRS, Université de Strasbourg, France

contact: sala@unistra.fr

Abstract — This contribution presents an ongoing work to implement a patient-specific mathematical virtual simulator for the eye. The aim is to create a multiscale and multiphysics model for the description of ocular biomechanics, fluid dynamics and hemodynamics. This instrument may serve to illustrate and estimate some clinically relevant parameters and predict their spatial and temporal evolution adopting forward-looking numerical techniques.

Keywords — ocular virtual simulator, hybridizable discontinuous Galerkin method, multiphysics, multiscale

I. INTRODUCTION

Our purpose is to develop a patient-specific mathematical virtual simulator (MVS) that could describe and quantify the interaction between biomechanics, fluid dynamics and hemodynamics in the eye. The aim is to couple all the various physical aspects in the same model in order to have a full overview of the ocular system. To reach this ambitious goal, we have identified four main modeling steps:

1. blood circulation in the eye from a systemic viewpoint;
2. biomechanics and tissue perfusion in the optic nerve head and the lamina cribrosa [1];
3. biomechanics for sclera, retina, choroid and cornea;
4. fluid dynamics of the vitreous and aqueous humor.

Each step is naturally coupled with the others, giving rise to challenging problems from both the modeling and computational perspectives. In this abstract, we focus our attention on the second and third steps.

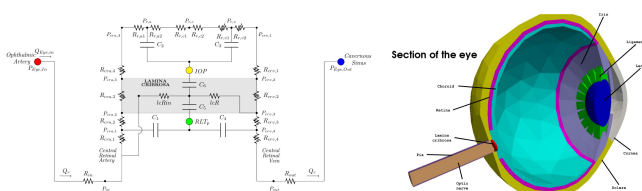


Fig. 1(left): circuit-based model retinal and retrobulbar flow

Fig. 2(right): the three dimensional geometry generated with Salome

II. MODEL AND METHODS

MVS has a multiscale architecture that aims at (i) preserving the natural systemic features of blood circulation, while (ii) providing detailed views on sites of particular interest from the clinical viewpoint, such as the lamina cribrosa. Thus, MVS combines (a) a circuit-based model for blood flow in the retinal vasculature, central retinal artery and central retinal vein (CRA, CRV), (b) a three-dimensional porous media model for the perfusion of the lamina cribrosa and (c) a three-dimensional isotropic elastic model for the biomechanics in the lamina cribrosa, retina, choroid, sclera

and cornea. Fig. 1 illustrates the circuit-based model in which we are substituting the lumped-parameters description of the lamina with a poroelastic spatial distribution model of the lamina. The elastic system of the lamina is also influenced by the biomechanics of the sclera, retina, choroid and cornea.

The novelty of the methods in the current work comes from two complementary perspectives. On the one hand, from a clinical perspective, the model inputs (e.g. blood pressure, intraocular pressure and ocular geometry) are easily accessible with standard instruments and can therefore be tailored to patient-specific conditions. In particular, starting from an initial CAD (Computer Aided Design) geometrical model, the structure of the geometry is further elaborated using Salome¹ with the help of a Python script that incorporates some parameterized values (e.g. thickness of the lamina cribrosa) into the final meshed geometry (Fig. 2). On the other hand, from a numerical viewpoint, the problem involves a non-trivial coupling between biomechanics and hemodynamics in the tissue of the lamina cribrosa, which calls for (A) high accuracy in the approximation for both primal variables (i.e. displacement and pressure) and dual variables (i.e. stress and perfusion velocity), and (B) integral boundary conditions to account for the coupling between zero- and three-dimensional model components.

A. Coupling between biomechanics and hemodynamics

The two-way coupling between biomechanics and hemodynamics contributing to tissue perfusion in the lamina cribrosa is taken into account by means of the following poroelastic model:

$$\nabla \cdot \underline{\underline{\sigma}} = \underline{\underline{f}}_{el} \tag{1}$$

$$\underline{\underline{\sigma}} = \underline{\underline{\sigma}}_{el} - p \underline{\underline{I}} \tag{2}$$

$$\underline{\underline{\sigma}}_{el} = \mu (\nabla \underline{\underline{u}} + \nabla^T \underline{\underline{u}}) + \lambda (\nabla \cdot \underline{\underline{u}}) \underline{\underline{I}} \tag{3}$$

$$\nabla \cdot \underline{\underline{u}}_t + \nabla \cdot \underline{\underline{v}} = \underline{\underline{f}}_{fl} \tag{4}$$

$$\underline{\underline{v}} + \kappa \nabla p = 0 \tag{5}$$

where $\underline{\underline{\sigma}}$ is the total stress tensor, $\underline{\underline{u}}$ is the solid displacement, p is the fluid pressure, $\underline{\underline{v}}$ is the discharge velocity, λ and μ are the elastic parameters, κ is the permeability and $\underline{\underline{f}}_{el}$ and $\underline{\underline{f}}_{fl}$ are volumetric sources of

¹ www.salome-platform.org

linear momentum and fluid mass, respectively. The poro-elastic system, illustrated in Eq. (1)-(5), has been already studied and presented in [2] and [3]. Here, we highlight the importance of the two terms in red, since they are responsible for the biomechanical/hemodynamical coupling. Indeed, the presence of capillaries within the lamina collagen beams may influence the biomechanical behaviour of the tissue, as expressed in Eq. (2). In turn, structural deformations may induce local changes in blood flow, as expressed in Eq. (4).

B. HDG and integral boundary condition

To numerically solve the coupled system (1)-(5), we implemented a hybridizable discontinuous Galerkin (HDG) [4] method in the multiphysics open-source platform Feel++ [5]. The HDG method has several attractive features: i) it provides optimal approximation of both primal (pressure, displacement) and dual (velocity, stress) variables; ii) it requires less globally coupled degrees of freedom than DG methods of comparable accuracy using static condensation; iii) it allows local element-by-element postprocessing to obtain new approximations with enhanced accuracy and conservation properties. Furthermore, to handle the multiscale nature of this problem, we coupled the three-dimensional system of partial differential equations (1)-(5) with a zero-dimensional circuit model implemented in OpenModelica². The complex coupling between the HDG system and the circuit has been achieved using integral boundary condition (IBC) and a time-splitting energy-based scheme in the spirit of a recent method presented in [6]. The combination of IBC with the high accuracy in dual variables of the HDG method revealed to be determinant for the proper resolution of the coupled multiscale problem. A detailed explanation of this procedure can be found in [7].

III. RESULTS

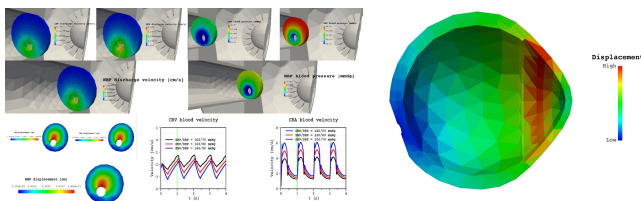


Fig. 3(left): lamina cribrosa and CRA/CRV results simulated via MVS

Fig. 4(right): qualitative displacement on retina, choroid, sclera and cornea simulated via MVS

Simulated distributions of velocities and pressure within the lamina and of blood velocity with the CRA and CRV obtained via MVS (see Fig 3) exhibit a satisfactory agreement with experimental data reported in [8]-[10], with a special focus on the blood pressure computed on the lateral boundary of the lamina where we have applied the integral interface condition between the 0d and the 3d model. Moreover, some outcomes (the two figures bottom right in

Fig. 3) of MVS can be directly compared to those obtained via direct imaging modalities [11].

In Fig. 4, we show an overview of the qualitative behaviour of the displacement for the lamina, retina, choroid, sclera and cornea.

IV. CONCLUSION

In conclusion MVS combines innovative and complex methods such as integral boundary condition for HDG in order to be able to address the increasing demand of information on parts of the eye that are not easily accessible with standard investigation methods, such as those regarding the perfusion of the lamina cribrosa in the optic nerve head. Furthermore the proposed model develops an interesting multiphysics and multiscale approach to connect different characters such as biomechanics and hemodynamics.

ACKNOWLEDGEMENT

This work has been partially supported by the Ministère de l'Enseignement supérieur et de la Recherche (France), NSF DMS-1224195, a grant from Research to Prevent Blindness (RPB, NY, USA), the Chair Gutenberg funds of the Cercle Gutenberg (France), the Center for Modeling and Simulation in Strasbourg (Cemosis) and the Labex IRMIA (University of Strasbourg, France). This project has finally received funding from the European Union's Horizon 2020 research and innovation programme under grant agreement No 731063.

REFERENCES

- [1] L. Sala et al. *Patient-specific virtual simulator of tissue perfusion in the lamina cribrosa*. Annual Meeting of the Association for Research in Vision and Ophthalmology, Posterboard Number 727 - B0474, Baltimore(MD), USA, 2017.
- [2] P. Causin et al. *A poroelastic model for the perfusion of the lamina cribrosa in the optic nerve head*. Mathematical biosciences, 257, 33-41, 2014.
- [3] D. Prada. *A hybridizable discontinuous Galerkin method for nonlinear porous media viscoelasticity with applications in ophthalmology*. PhD thesis. 2016.
- [4] B. Cockburn, J. Gopalakrishnan, R. Lazarov. *Unified hybridization of discontinuous galerkin, mixed, and continuous galerkin methods for second order elliptic problems*. SIAM Journal on Numerical Analysis, 47(2):1319-1365, 2009
- [5] C. Prud'Homme, V. Chabannes, V. Doyeux, M. Ismail, A. Samake et al. *Feel++: A Computational Framework for Galerkin Methods and Advanced Numerical Methods* ESAIM: Proceedings, EDP Sciences, 2012, 38, pp.429-455. <10.1051/proc/201238024>, www.feelpp.org
- [6] L. Carichino, G. Guidoboni, M. Szopos. *Operator splitting approach for coupling Stokes flow and nonlinear systems of ODEs*. 7th International Conference on Computational Methods for Coupled Problems in Science and Engineering, Rhodes, Greece (2017)
- [7] L. Sala et al. *An implementation of HDG methods with Feel++*. Application to problems with integral boundary condition. In preparation. 2017.
- [8] D. B. Yan et al. *Deformation of the lamina cribrosa by elevated intraocular pressure*. British Journal of Ophthalmology, 1994
- [9] I. A. Sigal et al. *Finite element modeling of optic nerve head biomechanics*, Invest. Ophthalmol. Vis. Sci., 2004.
- [10] G. Guidoboni et al. *Intraocular pressure, blood pressure, and retinal blood flow autoregulation: A mathematical model to clarify their relationship and clinical relevance*. Invest. Ophthalmol. Vis. Sci., 2014.
- [11] T.H. Williamson, A. Harris. *Color Doppler ultrasound imaging of the eye and orbit*. Surv Ophthalmol. 1996.

² www.openmodelica.org