



HAL
open science

Paleogenomics: reconstruction of plant evolutionary trajectories from modern and ancient DNA

Caroline Pont, Stefanie Wagner, Antoine Kremer, Ludovic Orlando,
Christophe Plomion, Jérôme Salse

► **To cite this version:**

Caroline Pont, Stefanie Wagner, Antoine Kremer, Ludovic Orlando, Christophe Plomion, et al.. Paleogenomics: reconstruction of plant evolutionary trajectories from modern and ancient DNA. *Genome Biology*, 2019, 20 (1), pp.1-17. 10.1186/s13059-019-1627-1 . hal-02278824

HAL Id: hal-02278824

<https://hal.science/hal-02278824>

Submitted on 26 May 2020

HAL is a multi-disciplinary open access archive for the deposit and dissemination of scientific research documents, whether they are published or not. The documents may come from teaching and research institutions in France or abroad, or from public or private research centers.

L'archive ouverte pluridisciplinaire **HAL**, est destinée au dépôt et à la diffusion de documents scientifiques de niveau recherche, publiés ou non, émanant des établissements d'enseignement et de recherche français ou étrangers, des laboratoires publics ou privés.



Distributed under a Creative Commons Attribution 4.0 International License

OPINION

Open Access



Paleogenomics: reconstruction of plant evolutionary trajectories from modern and ancient DNA

Caroline Pont¹, Stefanie Wagner^{2,3}, Antoine Kremer³, Ludovic Orlando^{2,4}, Christophe Plomion³ and Jerome Salse^{1*}

Abstract

How contemporary plant genomes originated and evolved is a fascinating question. One approach uses reference genomes from extant species to reconstruct the sequence and structure of their common ancestors over deep timescales. A second approach focuses on the direct identification of genomic changes at a shorter timescale by sequencing ancient DNA preserved in subfossil remains. Merged within the nascent field of paleogenomics, these complementary approaches provide insights into the evolutionary forces that shaped the organization and regulation of modern genomes and open novel perspectives in fostering genetic gain in breeding programs and establishing tools to predict future population changes in response to anthropogenic pressure and global warming.

Introduction

Flowering plants, or angiosperms, have come to dominate terrestrial vegetation. They are an essential component of the carbon, oxygen and water cycles, and paramount to the stability of the climate and substrate of our planet. Through photosynthesis, angiosperms convert solar energy into the basal source of chemical energy that underlies the development of almost all terrestrial ecosystems. Flowering plants are also essential to human society as our principal source of food, animal fodder, medicines, and materials for building, clothing, and manufacturing, among many other uses. Molecular clock estimates [1] and paleontological data [2] suggest that angiosperms emerged some 120–170 million years ago (mya), during

a period extending from the Cretaceous to the end of the Jurassic; whereas integrated timescale approaches suggest that they might have emerged even further in the past, some 200–250 mya [3]. Flowering plants rapidly diversified so that over 350,000 species are alive today [4–7]. These species are divided into two main groups, the monocots and eudicots, which account for 20% and 75%, respectively, of the diversity characterized to date [6]. Recent advances in high-throughput DNA sequencing and computational biology have helped researchers to develop the field of paleogenomics, making it possible to retrieve invaluable information about the evolutionary history that underlies the emergence and subsequent diversification of flowering plants.

This research field relies on two main complementary approaches that aim to track the evolutionary genomic changes at both the macro-evolutionary and micro-evolutionary temporal scales. The first, an indirect (or ‘synchronic’) approach, compares modern genomes to reconstruct ancestral genomes over deep timescales of several millions of years (macro-evolution). The second approach, a direct (or ‘allochronic’) strategy, relies on the direct sequencing of genomes from past plant subfossil materials that have been preserved over the past 10,000 years (micro-evolution). Here, we address the underlying methodologies for both paleogenomics approaches, as well as their major achievements and prospects in providing an understanding of the evolutionary trajectories that underpin the genetic makeup of modern plant species.

Reconstruction of an ancestral genome from modern genome sequences (synchronic reconstruction)

Background

The recent accumulation of plant genomic resources has provided an unprecedented opportunity to compare modern genomes with each other and to infer their evolutionary

* Correspondence: jerome.salse@inra.fr

¹INRA-UCA UMR 1095 Génétique Diversité et Ecophysiologie des Céréales, 63100 Clermont-Ferrand, France

Full list of author information is available at the end of the article



history from the reconstructed genomes of their most recent common ancestors (MRCA). Such ancestral genome reconstruction was initially used to investigate 105 million years of eutherian (placental) mammal evolution. The inferred ancestral karyotypes for the eutherians ($2n = 44$), boreoeutherians ($2n = 46$), and great apes ($2n = 48$) were used to increase our understanding of the mechanisms driving speciation and adaptation [8–11]. In particular, eutherian genomes have been found to be surprisingly stable, and affected by only a limited number of large-scale rearrangements during evolution. Higher rates of such chromosomal shuffling have been reported for the branch extending from the great ape ancestor to the ancestor of humans and chimpanzees, which diverged after the Cretaceous–Paleogene (K–Pg) boundary, at a time when the dinosaurs became extinct. Computational reconstructions of mammalian ancestral genomes were instrumental in suggesting that environmental changes may have driven genome plasticity through chromosome rearrangements. These changes may also have led to new variation in gene content and gene expression that gave rise to key adaptive biological functions, such as olfactory receptors [11–13]. Ancestral genome reconstruction has also shed light on plant evolution.

State-of-the-art methodology

The ancestral genome is a ‘median’ or ‘intermediate’ genome consisting of a clean reference gene order that is common to all of the investigated extant species (Fig. 1).

The ancestral genomes that are inferred *in silico* are actually minimal shared ancestral genomes, which lack components of the ‘real’ (unknown) ancestral genomes that were either lost from all of the investigated descendants and/or retained by only one modern species. Such inferred ancestral (minimal) genomes are reconstructed following a four-step strategy [14]. First, sequence comparison across genomes is used to characterize conserved or duplicated gene pairs on the basis of alignment parameters and/or phylogenetic inferences that define genes that are conserved in pairs of species (i.e., putative protogenes (pPGs)). The pPGs that are conserved in all of the investigated species (i.e., core protogenes (core-pPGs)) are used for the definition of synteny blocks (SBs), with the filtering out of groups of fewer than five (pPGs) genes. SBs are then merged on the basis of chromosome-to-chromosome orthologous relationships between the compared genomes, delivering the ancestral protochromosomes (also referred to as contiguous ancestral regions (CARs)). These CARs correspond to independent sets of genomic blocks that display paralogous and/or orthologous relationships in modern species. Finally, the ordering of protogenes (including non-core-pPGs, i.e., genes that are conserved in only a subset of the investigated species) onto the previously defined protochromosomes yields an exhaustive set of ordered protogenes (oPGs).

Putative orthologous (or ancestral) genes that have either been transposed outside of CARs so that they are not conserved in synteny in the course of evolution, or

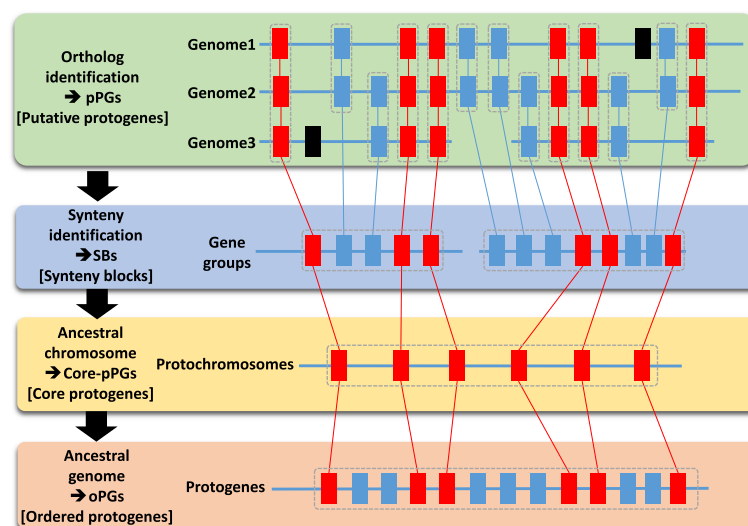


Fig. 1 Methodological principles for ancestral genome reconstruction. The four-step strategy is as follows. Step 1: identification of conserved or duplicated genes (putative protogenes (pPGs)); here, genes are illustrated as *rectangles* and connected with *red lines* when conserved between all the investigated species or *blue lines* when conserved in a subset of these species. Species-specific genes, which are not present in the inferred ancestor, are shown as *black rectangles*. Step 2: identification of synteny in groups of conserved adjacent genes (synteny blocks (SBs)), which are highlighted by *grey dashed rectangles*. Step 3: reconstruction of contiguous ancestral regions (CARs; highlighted by *grey dashed rectangles*) containing genes that are conserved in all of the investigated species (referenced as core-pPGs). Step 4: ancestral genome reconstruction delivering protochromosomes (highlighted by *grey dashed rectangles*) and reordered protogenes (oPGs) [23]

that are only retained in one of the investigated species, or that are lost from all of the investigated species are not identified in SBs and therefore are missing from the inferred ancestral genomes. Several tools such as DRIMM-synteny [15], ADHoRe [16], DiagHunter [17], DAGchainer [18], SyMAP [19], and MCScanX [20] are publicly available for clustering or chaining collinear gene pairs, whereas ANGES [21], MRGA [22], and inferCARS [10] are used for reconstructing ancestral genomes. Finally, the reconstructed ancestral karyotypes can be used to infer a parsimonious evolutionary model that assumes minimal numbers of genomic rearrangements (including inversions, deletions, fusions, fissions, and translocations). Such a model fosters new investigations of the evolutionary fate of ancestral genes/genomes, through precise identification of the changes involved (chromosome fusion, fission, translocation, gains, and losses of genes) and their assignment to specific species or botanical families.

Major achievements

The ancestral angiosperm karyotype (AAK) has recently been reconstructed with a repertoire of 22,899 ancestral genes that are conserved in present-day crops and that date back 190–238 mya. The angiosperms have also been proposed to emerge some 250 mya using evolutionary timescale approaches [3]. This time period largely overlaps with the late Triassic era and predates the earliest recorded plant fossil [23]. The AAK then diverged, giving rise to the ancestral monocot karyotype (AMK), with five protochromosomes and 6707 ordered protogenes (or seven protochromosomes according to Ming et al. [24]), and the ancestral eudicot karyotype (AEK), with seven protochromosomes and 6284 ordered protogenes [23]. It is possible to reconstruct any investigated modern monocot or eudicot genome using these inferred ancestors (AAK and AMK or AEK), such that modern karyotypes can be seen as a mosaic of reconstructed ancestral protochromosomal segments (Fig. 2). The availability of the AAK, AMK, and AEK helps us to track the evolutionary plasticity acting at the gene, chromosome, genome, and species levels over more than 200 million years of plant evolution [23].

At the gene level, the comparison of the AAK gene repertoire to those of outgroup species, such as gymnosperms, mosses, and single-cell green algae, uncovered genes that are specific to flowering plants. These genes were preferentially assigned to Gene Ontology (GO) terms such as ‘pollen–pistil interaction’, ‘response to endogenous stimuli’, ‘flower development’, and ‘pollination’, corresponding to the key biological processes that drove the transition between gymnosperms and angiosperms [23].

At the genome level, the genomic plasticity inherited through polyploidization events can be assessed, with ~

60 % of AAK protogenes being present as singletons today in modern species despite recurrent polyploidization events (Fig. 2). This general phenomenon of gene repertoire contraction following polyploidy is also observed at the chromosome level, with a general decrease in chromosome number after whole-genome duplication (WGD) resulting from massive ancestral chromosome fusions through two mechanisms, centromeric chromosome fusion (CCF) and telomeric chromosome fusion (TCF). CCF, which is mainly observed in grasses, involves the insertion of an entire chromosome into a break in the centromeric region of another chromosome. TCF involves the ‘end-to-end’ joining of two chromosomes via their telomeres [25]. The observed general pattern of chromosome number reduction involves unequal reciprocal translocations and the loss of several centromeres, such that only a subset of the ancestral pool of telomeres or centromeres are re-used as functional telomeres or centromeres in modern species [25, 26]. Despite multiple rounds of WGD in the course of plant evolution, the number of genes and chromosomes has been kept constant by massive diploidization and fusion events, at the gene and genome levels, respectively. Diploidization did not occur at random in the genome, particularly where retained ancestral genes were partitioned between paralogous blocks so as to form ‘most fractionated’ (MF, also known as S for sensitive) and ‘least fractionated’ (LF, also known as D for dominant) chromosomal compartments [14]. ‘RNA binding’, ‘nucleic acid binding’, ‘receptor activity’, ‘signal transducer activity’, ‘receptor binding’, and ‘transcription factor activity’ are frequent GO terms associated with molecular functions that are enriched in extant genomes relative to the AAK. They correspond to adaptive or specialized biological functions for which multiple copies of genes were conserved after WGD and have survived the general diploidization phenomenon [23].

As has been proposed for mammalian evolution, paleopolyploidy events in angiosperms are usually considered rare, are likely to lead to an evolutionary dead-end, and may have served as the basis for species diversification and survival during episodes of mass species extinction [27–29]. Although still debated, the ancient paleopolyploidization as well as ancestral speciation events in angiosperms may have been associated with known periods of species extinction, such as the Cretaceous/Paleogene (called K-Pg, ~ 65 mya) transition [27] or the Triassic/Jurassic (called Tr-J, ~ 200 mya) transition [30]. More recent paleopolyploidization events that are specific to plant lineages (or even species) may be associated with more recent plant diversification periods during the Paleogene and Neogene (~ 20–30 mya), as observed from historical changes in dry forest communities and biomasses [31, 32]. Thus, polyploidy

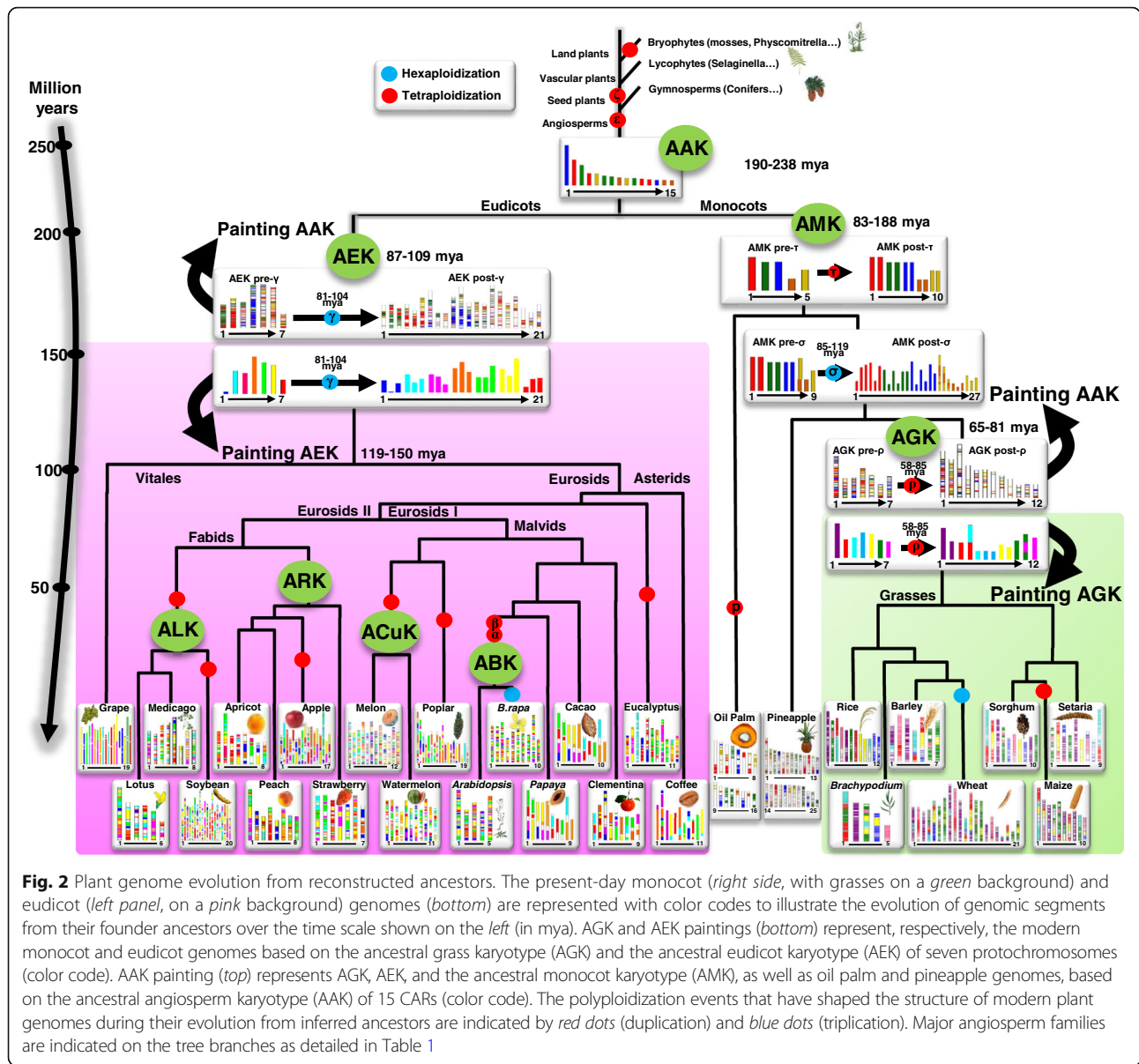


Fig. 2 Plant genome evolution from reconstructed ancestors. The present-day monocot (*right side*, with grasses on a *green* background) and eudicot (*left panel*, on a *pink* background) genomes (*bottom*) are represented with color codes to illustrate the evolution of genomic segments from their founder ancestors over the time scale shown on the *left* (in mya). AGK and AEK paintings (*bottom*) represent, respectively, the modern monocot and eudicot genomes based on the ancestral grass karyotype (AGK) and the ancestral eudicot karyotype (AEK) of seven protochromosomes (color code). AAK painting (*top*) represents AGK, AEK, and the ancestral monocot karyotype (AMK), as well as oil palm and pineapple genomes, based on the ancestral angiosperm karyotype (AAK) of 15 CARs (color code). The polyploidization events that have shaped the structure of modern plant genomes during their evolution from inferred ancestors are indicated by *red dots* (duplication) and *blue dots* (triplication). Major angiosperm families are indicated on the tree branches as detailed in Table 1

appears to have played a major role in (re-)shaping structural and functional genomic diversification during angiosperm evolution, with contrasting rates of changes between species, subgenomes, genes, and functions. It may also have delivered biological novelties that have enhanced tolerance of environmental changes, including those occurring during mass extinction events.

Grasses as a case study

Besides the recovery of extinct AMK, AEK, and AAK founder karyotypes, the synchronic approach has also enabled the computational reconstruction of the ancestral genomes of major angiosperm lineages. In eudicots, ancestral genomes have been proposed for the Rosaceae [33], Brassicaceae [34], and Cucurbitaceae [35]

subfamilies, consisting of nine, eight (or seven), 12 (using the melon genome as pivot) protochromosomes, respectively, as well as for the legumes [36]. In grasses, the ancestral grass karyotype (AGK), which takes into account gene conservation between rice, wheat, barley, *Brachypodium*, sorghum, setaria, and maize, was structured into seven protochromosomes containing 8581 protogenes (9430 in Wang et al. [37]) and with a minimal gene space physical size of 30 Mb [23, 38, 39]. This ancestral genome went through a paleotetraploidization event (involving seven duplicated blocks shared by modern monocots) more than ~ 95 mya [37, 38, 40]. Two subsequent symmetric reciprocal translocations, one of which was centromeric (CCF) and the other telomeric (TCF), and two asymmetric reciprocal translocations resulted in a total of

12 chromosomes [23, 39] bearing 16,464 protogenes (18,860 according to Wang et al. [37]). All investigated modern grass genomes can then be reconstructed from this post-polyploidy ancestral karyotype of 12 protochromosomes, taking into account CCF, TCF, translocation, and inversion events (Fig. 2). Rice has retained the $n = 12$ structure of the AGK and has been proposed to be the slowest evolving species among the grasses [23, 37], whereas the other species underwent numerous chromosome rearrangements to reach their present-day karyotypes [23, 38, 39]. Rice can, therefore, be considered as a reference genome (also known as a ‘pivot’) for comparative genomics studies in grasses.

The grasses appear to constitute a key botanical family in which to investigate the role of polyploidizations in promoting species speciation and adaptation. Grasses experienced an ancestral paleotetraploidization event as well as species-specific polyploidization events, with a tetraploidization event in maize and tetraploidization or hexaploidization events in wheat. After a polyploidization event, homoeologous chromosome differentiation is necessary to stabilize meiosis by preventing incorrect pairing between homoeologs. This is achieved through massive partitioning of the organization and regulation of the subgenomes, involving the fusion, fission, inversion, and translocation of chromosomes, loss of genes or DNA, and neo- or sub-functionalization of gene pairs. Ultimately, such post-polyploidy genomic plasticity led to novel phenotypes that underlie the evolutionary success of polyploid plants and, ultimately, was selected for by humans during domestication (reviewed in [14, 29, 41, 42]).

Promising scientific avenues from inferred ancestral genomes

Inferred ancestral genomes are not only crucial for understanding how plant genomes have evolved at the chromosome and gene scales, but also offer the possibility to address, in novel ways, issues regarding translational research and post-polyploidy plasticity that are relevant to plant breeding.

Translational research

Ancestral genomes and related comparative genomics data are delivered through public web servers such as PlantSyntenyViewer (<https://urgi.versailles.inra.fr/synteny> [30, 34, 39]), Genomicus (<http://www.genomicus.biologie.ens.fr/genomicus-plants> [43]), COGE (<https://genomevolution.org/coge/> [44]) and PLAZA (<http://bioinformatics.psb.ugent.be/plaza/> [45]). The ancestral genomes (AAK, AEK, AMK, and AGK, as well as ancestral genomes for the Rosaceae, Brassicaceae, and Cucurbitaceae; Table 1) provide a list of accurate orthologs between species that can be used to improve the structural and functional annotation of genomes. The plant genomes shown in Fig. 2

have been sequenced, assembled, and finally annotated by different methods and groups, potentially resulting in some inconsistencies. With the use of reconstructed ancestral genomes, structural (intron and exon structure) and functional (GO) annotations of genes can be improved by comparing orthologous and paralogous gene sets that may share similar (ancestral) genomic features. Reconstructed ancestors can also be used as a useful resource for translational research on key agronomical traits, particularly from model species (such as *Arabidopsis thaliana*) to crops [46]. Modern monocot and eudicot crops can now be connected via the 22,899 protogenes that define the AAK [23], offering the opportunity to exploit the knowledge gained on genes underlying traits of interest in models based on orthologs or paralogs in crops delivered in the proposed evolutionary scenario and associated paleogenomic data (Fig. 2). Such translational-based dissection of traits has been performed successfully in several botanical families, including legumes (for example, between *Medicago truncatula* and pea, as described by Bordat et al. [47]) and grasses (for example, between *Brachypodium distachyon* and wheat, as described by Dobrovolskaya et al. [48]).

Polyploidization

Polyploidization events have been proposed as a major source of genetic novelty during evolution. Such post-polyploidy genomic plasticity takes place in paleopolyploids that are subject to diploidization (evolution toward a reduction of duplicate redundancy) through (not exclusively): (i) differences in ancestral gene retention yielding contrasted plasticity between MF (or S) and LF (or D) compartments; (ii) bias in GO for the retention of multiple copies of genes displaying an enrichment in functional categories such as transcriptional regulation, ribosomes, response to abiotic or biotic stimuli, response to hormonal stimuli, cell organization, and transporter functions; (iii) partitioned gene expression with differences in transcript abundance or neo- and sub-functionalization patterns between retained pairs; (iv) contrasted single nucleotide polymorphisms (SNPs) at the population level between paralogous genomic fragments; and (v) contrast in small regulation as well as differences in epigenetic (CG methylation) marks between duplicated blocks/genes [49]. Such subgenome dominance phenomena, which partition the organization and regulation of diploidized paleopolyploids, have been particularly exemplified in Brassicaceae and maize [50–53] but are reportedly so far undetectable in soybean, banana, and poplar [54].

The evolutionary plasticity gained from recurrent polyploidization and diploidization (also known as post-polyploidization diploidization (PPD) [55]) processes has provided the basis for functional and phenotypic

Table 1 Ancestral plant genomes

Family	Dating	Name	Chromosome number	Gene number	Reference
Angiosperms	190–238	AAK (post- ϵ/ζ)	15	22,899	[23]
Eudicots	87–109	AEK (pre- γ)	7	6284	[23]
Eudicots	87–109	AEK (post- γ)	21	9022	[23]
Monocots	100–150	AMK (pre- τ)	5	6707	[23]
Monocots	100–150	AMK (post- τ)	10	13,916	[23]
Grasses	65–81	AGK (pre- ρ)	7	8581	[39]
Grasses	70–96	AGK (pre- ρ)	7	9430	[37]
Grasses	65–81	AGK (post- ρ)	12	16,464	[39]
Grasses	70–96	AGK (post- ρ)	12	18,860	[37]
Brassicaceae	27–40	ABK (post- α/β)	8	20,037	[34]
Brassicaceae	23–27	ACaK (post- α/β)	8	22,085	[34]
Brassicaceae	23–27	PCK (post- α/β)	7	21,227	[34]
Rosaceae	70–90	ARK (post-WGD)	9	8861	[33]
Cucurbitaceae	25–50	ACuK (post-WGD)	12 (<i>Melon as pivot</i>)	18,534	[35]
Legumes	56–59	ALK (post-WGD)	–	28,900	[36]

Summary of reconstructed ancestral angiosperm genomes listing the targeted botanical family, dating (in mya) of the whole-genome duplication defining the delivered post- and pre-polyploidization ancestors, ancestral genome name, number of chromosomes, number of genes and associated references in the literature. **Abbreviations:** AAK ancestral angiosperm karyotype, ABK ancestral *Brassicaceae* karyotype, ACaK ancestral *Camelineae* karyotype, ACuK ancestral *Cucurbitaceae* karyotype, AEK ancestral eudicot karyotype, AGK ancestral grass karyotype, ALK ancestral legume karyotype, AMK ancestral monocot karyotype, ARK ancestral *Rosaceae* karyotype, PCK proto-*Calepineae* karyotype, WGD whole-genome duplication

novelty in angiosperms. This plasticity may underlie a plant's ability to survive in or invade a novel environment, ultimately driving the observed evolutionary success of important plant families [27]. Nevertheless, the continuum and interplay between the reported structural and functional reprogramming after PPD processes remain poorly understood. The access to ancient DNA (aDNA) sequences from extinct diploid and polyploid ancestors contemporary to past polyploidization events will further expand our understanding of this major phenomenon driving plant evolutionary dynamics, making it possible to characterize the driving molecular mechanisms that have potential for use in breeding. In that regard, nascent polyploids (particularly in wheat and *Brassicaceae*) provide opportunities for testing the hypothesis that polyploidization accelerates evolutionary adaptation to environmental changes [56].

Evolutionary processes inferred from ancient DNA (allochronic reconstruction)

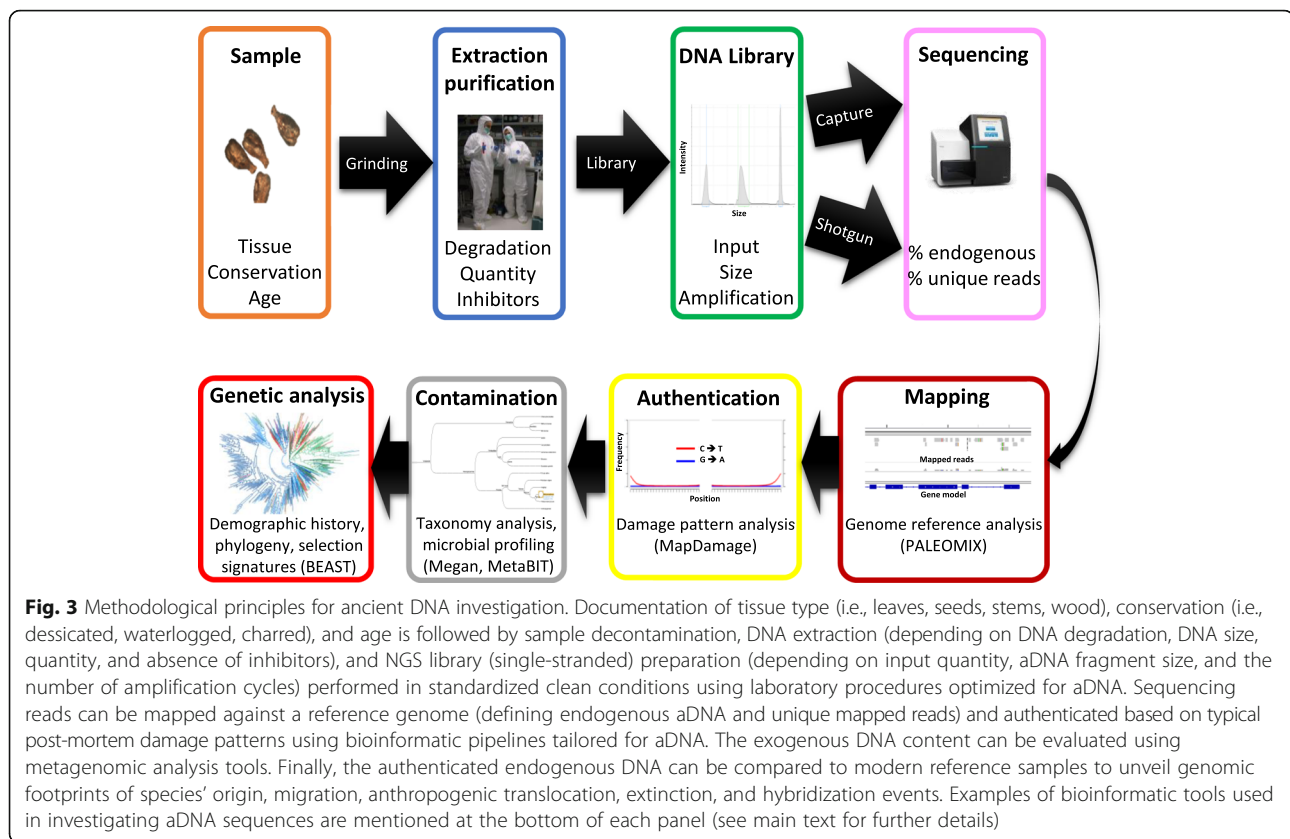
Background

Ancient DNA sequencing offers a unique opportunity to retrieve genetic information from past individuals. It has been applied successfully to ancient hominins and human individuals (see review in Marciniak and Perry [57]), and to a handful of mammal species, including woolly mammoths [58], aurochs [59], horses [60], and dogs [61], at both the genomic and the population scale. Ancient genomes have helped to unveil the complex population dynamics and processes that underlie

evolution, involving admixture, migration, and adaptation [62–64]. Signatures of adaptation in response to natural or human-driven selection are embedded within the genomes of modern populations and species [65], making inferences about past selective processes possible. Such indirect approaches have clearly demonstrated the power of natural and artificial selection in shaping local adaptation, but have also shown limitations because evolutionary inferences are based on theoretical models with simplifying assumptions. The possibility of adding a temporal dimension to such analyses, overlapping key evolutionary transitions such as demographic or environmental changes, could provide enhanced statistical power for detecting and quantifying the genomic changes underlying adaptive [66, 67] and non-adaptive histories [68, 69]. Such studies are still embryonic in plants but will eventually help us to (i) chart the complex patterns of adaptation through space and time, and (ii) measure the evolutionary responses of plants to key evolutionary and/or environmental transitions.

State-of-the-art methodology

In addition to working under rigorous clean laboratory conditions, appropriate sequencing and computational methods are required to authenticate and analyze aDNA sequences correctly (Fig. 3). Over the past decade, aDNA research has moved from the characterization of short pieces of DNA, mostly mitochondrial, to complete genome sequencing (for a review, see Orlando et al. [70]).



This impressive progress has been made possible due to the advent of high-throughput DNA sequencing platforms, which can sequence up to several billions of short nucleotide reads in no more than a few days [71, 72]. Such sequencing capacities have opened access to even the most minute fraction of DNA molecules preserved in fossil specimens, even though these molecules are often outnumbered by DNA fragments from environmental microbes [73].

Current aDNA methodologies do not rely on brute-force sequencing of DNA extracts but rather leverage the specific biochemical features of aDNA molecules in subfossils. First, a number of paleontological and archaeological remains, such as hair [74], petrous bones [75], and tooth cementum [76], generally provide micro-environments with DNA preservation conditions that are generally better than those provided by other types of calcified remains, such as shells [77]. Second, DNA extraction methods tailored to the retrieval of the most fragmented DNA templates, which also represent the most abundant fraction of ancient DNA molecules, have been developed [78, 79]. As the information present in 25–35 bp fragments is generally compatible with accurate sequence alignment, the recovery of such ultra-short templates has greatly improved the sensitivity of aDNA

analyses. Third, some extraction procedures, including pre-digestion [80], the washing steps prior to full digestion [81], and other techniques [82, 83], have proved useful for removing at least a fraction of environmental contamination.

In addition, a range of DNA library construction methods have also been developed, and important biases have been mitigated, including those that occur during adapter ligation [84] and PCR amplification [85]. The development of DNA library construction methods that exploit molecular features of aDNA, in particular the presence of damage in the form of single-strand breaks [86] and/or deaminated cytosines [87], has also enhanced our ability to access aDNA templates. Finally, target enrichment approaches, aimed at the characterization of organellar DNA [88] or of a limited number of mitochondrial and nuclear loci [89], or up to hundreds of millions of SNPs scattered throughout the nuclear genome [90] and even of the entire nuclear genome [91, 92], now contribute to the retrieval of the genome-scale information required to address major biological questions in both a cost- and time-effective manner. It is worth noting that a number of computational approaches have also helped to quantify DNA damage [93, 94], to reduce its impact on downstream analyses

[94, 95], and to improve the sensitivity and accuracy of aDNA read alignments [96–99]. Unlike material from human or vertebrate taxa, plant material contains polyphenols, polysaccharides, and other molecules that can interfere with standard molecular tools and/or reagents. Therefore, the development of procedures that are tailor-made for the recovery, purification, and

manipulation of DNA from botanical remains is necessary (Table 2).

Major achievements

Plant seeds can provide a favorable environment for the preservation of nucleic acids over millennia, perhaps as a result of the active desiccation mechanisms involved

Table 2 Ancient plant DNA

Species	Dating ^a	Site	Sample	Characterization ^b	Extraction ^c	Reference
Oak	500–9800 BP	Europe	Waterlogged wood	NGS	TrisHCL SDS CaCl ₂ EDTA DTT PK/Phchlo/Column	[142]
Japanese cedar	3600 BP	Japan	Buried tree	PCR/sequencing	Column	[133]
Maize	1100–6000 BP	New World	Desiccated cob	PCR/sequencing	CTAB TrisHCL NaCl EDTA/ Chlo	[111] [112]
Maize	360–1320 BP	New World	Desiccated cob	PCR/sequencing	Column	[114]
Maize	670–5280 BP	New World	Desiccated cob	Capture, NGS	SDS DTT PK/Phchlo/Column	[115]
Maize	650–4300 BP	New World	–	PCR/sequencing	SDS DTT PK/Phchlo/EDTA PTB/Column	[113]
Maize	4700 BP	Chile, Peru	Charred and non-charred grain	PCR/sequencing	SDS DTT PK/Phchlo	[110]
Maize	5310 BP	Mexico	Desiccated grain	NGS	TrisHCL SDS CaCl ₂ EDTA DTT PK/Phchlo/Column	[116]
Maize	5300 BP	Mexico	Desiccated cob	NGS	–	[117]
Sunflower	3100 BP	USA	Desiccated disk fragment, pericarp, kernel	NGS	TrisHCL NaCl SDS CaCl ₂ EDTA DTT PK/Phchlo/Column	[119]
Radish	350–550 AD	Egypt	Desiccated seed	Chemical analysis/ PCR/sequencing	CTAB TrisHCL NaCl EDTA/Chlo	[124]
Sorghum	2800 BP	Egypt	Desiccated seed	PCR/sequencing	–	[125]
Rice	1200–2400 BC	China	Desiccated seed and chaff	PCR/sequencing	Magnetic beads	[127]
Grape	1600–2500 BP	Europe	Waterlogged and charred pip	PCR/sequencing	DTAB /Chlo/CTAB	[120]
Grape	7 th –15 th century AD	Italy	Waterlogged pip	PCR	SDS DTT PK/Phchlo/Column	[121]
Grape, maize, olive, dogwood, cotton	400–2400 BP	New World, Europe	Non-carbonized remain	PCR/sequencing	SDS DTT PK/Phchl	[122]
Barley	6200–5800 BP	Israel	Desiccated seed	NGS	CTAB TrisHCL PVP βME/Phchlo/ Column	[104]
Barley	3000 BP	Egypt	Desiccated grain	PCR/sequencing	SDS DTT PK EDTA PTB/Column	[103]
Barley, wheat	150–5250 BC	Spain	Charred, partially charred, waterlogged seed	PCR/sequencing	TrisHCL SDS EDTA PK/Phchlo or Column	[105]
Wheat	700 AD–8400 BP	Anatolia	Charred grain	PCR/sequencing	CTAB TrisHCL NaCl EDTA/Chlo	[109]
Wheat	340–3500 BP	Spain	Charred and desiccated seed	PCR/sequencing	Tris EDTA CTAB βME/Column	[108]
Cotton	750–3750 BP	Brazil, Peru, Egypt	Desiccated seed	NGS	CTAB/Column	[132]
<i>Arabidopsis</i>	300 BP	USA	Herbarium	NGS	CTAB or PTB DTT/Column	[131]

Summary of ancient plant nuclear DNA recovery listing species, dating, location site, sample type, characterization method, extraction protocol, and associated references. ^aDatings are referenced as in the publication concerned using BC, AD, or BP. ^bPCR/sequencing polymerase chain reaction and sequence capture, NGS next-generation sequencing. ^cDDT dithiothreitol proteinase K, Phchlo phenol-chloroform, Ph phenol, Chlo chloroform, SDS sodium dodecyl sulphate, EDTA ethylene-diamine-tetraacetic acid, CTAB cetyltrimethylammonium-bromide, PTB phenylthiazolium bromide, DTAB dodecyltrimethylammonium bromide, βME β-mercaptoethanol, Tris tris(hydroxymethyl) aminomethane, PK proteinase K

in dormancy [100, 101]. While recent work has shown encouraging results, studies leveraging the information in the DNA (and/or RNA) fragments present in plant subfossils are still scarce (for review, see Gutaker and Burbano [102]). The number of the species studied spans a large taxonomic range and includes barley [103, 104], wheat [105–109], maize [110–118], sunflower [119], grape [120–122], bottle gourd [123], radish [124], sorghum [125], papyrus [126], rice [127], olive [128], orchid [129], *Prunus* [130], *Arabidopsis* [131], cotton [132], and trees [133–136]. Similarly, the primary material used for DNA extraction includes a whole variety of tissues, such as fruits, seeds, leaves, and woods, preserved in a wide range of conditions, including charred, waterlogged, desiccated, or mineralized remains. Ancient DNA from organelles, which have sequences that are highly conserved among plant species and which is generally better preserved than the nuclear genome, have been widely used in paleogenomics studies on plants over the past decade [137]. Such organellar DNAs include ribosomal (rDNA) and chloroplast (cpDNA) markers such as the *rbcl* gene (which encodes the large subunit of ribulose-1,5-bisphosphate carboxylase, an important enzyme in photosynthesis), trn introns and spacers (which offer more variable non-coding information), and *matK* (the maturase K) gene. The internal transcribed spacer 1 of the ribosomal DNA gene (*ITS1*) has classically been used in characterizing plant aDNA in papyrus [126], *Prunus* [130], bottle gourd [123], orchid [129], olive [128], wheat [105, 106], and trees [134–136]. Importantly, in contrast to studies on animals, mitochondrial DNA (mtDNA) has been overlooked in plant aDNA research, probably because of its more-than-100-times-slower mutation rate [138–140].

At the nuclear level, a handful of genetic markers, mostly carrying functional variants that are associated with flowering time and starch storage, have already been characterized, originally by PCR, and more recently by target-enrichment approaches, which helped track the genetic variation of major maize genes over the past 6000 years [116]. The presence of lipids (fatty acids and sterols) and nucleic acids in desiccated radish seeds from a 6th century storage vessel recovered from Qasr Ibrim in Egypt has been reported [124]. Further DNA investigation of plant remains from archaeological sites in Egypt have been also reported for sorghum [125]. In rice, genomic sequences from remains found at Tianluoshan, a site of the local Hemudu Neolithic culture in the low Yangtze, were compared to current domesticated and wild rice populations in order to investigate the genetic changes underlying the domestication syndrome [127]. Microsatellite loci have also been used to investigate the origins of grape seeds preserved by waterlogging and charring at several European Celtic, Greek, and Roman

sites [120, 122]. Cotton aDNA was used to investigate changes in transposon composition that have occurred over the past 1600 years of domestication [132]. Finally, moving towards more recent times, herbarium specimens have been found to generally yield excellent DNA preservation, compatible with the whole-genome sequencing of plants such as potato [141], *Arabidopsis* [131], or orchid [129], and even of some of the pathogens responsible for historical famines such as that caused by potato blight [141]. More recently, technological advances in next-generation sequencing (NGS; Table 2) as well as target enrichment approaches (such as sequence capture) have delivered highly relevant retrieval and authentication of aDNA in barley [104], maize [115–117], oak [142], and sunflower [119], which can now be used as standards for plant aDNA studies. In addition, the recent recovery of aDNA from waterlogged wood (oak) remains has opened up new avenues for investigating the recent evolution of forest cover in the face of climate and/or anthropogenic changes [142].

The most thorough plant aDNA studies have been probably carried out in maize and barley. In maize, the analysis of transposable elements (*Mu*) in pre-Columbian kernels [111], and of the alcohol dehydrogenase gene (*adh*) and microsatellite loci in desiccated maize cobs excavated in caves, provided the first insights into maize origin and domestication [112, 114]. Then, target enrichment through gene capture helped to decipher the early diffusion of maize into the American Southwest and to track genomic selection signals during different phases of domestication, in particular in loci relevant to drought tolerance and sugar content [115]. In barley, the genome (exome) sequence of 6000-year-old barley grains from (pre-)historic caves in the Judean Desert revealed close affinities with extant landraces from the Southern Levant and Egypt. These findings were consistent with a proposed origin of domesticated barley in the Upper Jordan Valley, as well as with gene flow between cultivated and wild populations during the early domestication phase [104]. In addition to aDNA, plant subfossils can also provide ancient RNA (including small RNAs) and epigenetic (i.e., DNA methylation) signatures [143–146]. Barley is the ancient crop that has garnered most of the attention at the DNA, RNA, and epigenetic levels. A series of investigations have addressed the complex process of local adaptation and domestication, or have identified the presence of barley stripe mosaic virus, one of the major diseases affecting this major crop [101, 144–146].

Wheat as a case study

Plant aDNA provides a catalog of ancient sequence polymorphisms that are extremely valuable in disentangling the temporal and geographical locus of domestication as well as the patterns of migration (diffusion). This catalog

also helps to detect hybridization events between cultivated and wild relatives, including those that may have been advantageous. More than 2500 plant species are thought to have been domesticated over the past 12,000 years of evolution, since the last glacial period [147]. However, the domestication history of most crops is still contentious and several evolutionary models have been proposed. Ancient DNA has provided the data necessary to test a number of competing scenarios, mostly in cereals and especially in wheat, pertaining to the migration, translocation, extinction, hybridization, and demographic dynamics underpinning modern cultivars (Fig. 4).

It is currently thought that tetraploid wheats, which are used for pasta production, emerged some 0.5 mya from the hybridization of a wild *Triticum urartu* Tumanian ex Gandivan (AA) and an undiscovered species of the *Aegilops speltoides* Tausch lineage (BB). It is widely accepted that the domestication of this tetraploid wheat (wild emmer AABB) in southeastern Turkey—within the so-called ‘Fertile Crescent’ (a region extending from western Iran, Iraq, Jordan, Israel, Lebanon, and Syria to south-east Turkey)—followed by a north-eastern migration, led to its hybridization with *A. tauschii* (DD) and the emergence of bread wheat (*Triticum aestivum*, AABBDD). This hybridization event most probably occurred within a corridor spanning from Armenia to the south-western coast of the Caspian Sea [148, 149]. After the last glacial maximum, human sedentarism associated with the development of agriculture emerged in several sub-regions of the Fertile Crescent [150], where several major crops, including wheat and barley, and farm animals such as sheep, goats, cows, and pigs were domesticated.

Plant fossil remains displaying the characteristics of domesticated cereal crops have been discovered at multiple archaeological sites dating from 8000–10,000 years ago, a key historic period marking the human transition from a foraging lifestyle to early sedentary agricultural societies. The domestication of wheat involved selection for traits that are related to seed dormancy and dispersal, such as brittle rachis, tenacious glume, and non-free-threshing traits [151]. The spread outside of the original domestication center followed four major historical routes of human migration, including a westwards expansion through inland (via Anatolia and the Balkans to Central Europe) and coastal (via Egypt to the Mahgreb and Iberian peninsula) paths, and an eastwards expansion through the north and along the Inner Asian Mountain Corridor [152]. Following domestication, modern breeding activities starting after 1850 CE (Common Era) further reduced the genetic diversity in genomic regions harboring genes involved in agricultural performance or adaptation (such as photoperiodism, vernalization, flowering,

accumulation of seed storage protein, plant architecture, and so on) [153].

Access to aDNA would enable the estimation of the loss of genetic diversity associated with the various processes operating during 10,000 years of domestication, hybridization, migration, and adaptation. Among the evolutionary processes underpinning the origins of wheat, hybridization (often referred to as reticulated evolution) remains controversial because of the lack of a modern representative of some diploid progenitors (especially for the B subgenome; Fig. 4). Future aDNA work, notably for the so-called naked wheat that was common in the Neolithic [154–156] or the ‘new glume wheat’ found at Neolithic and Bronze Age sites [157] and proposed to be an extinct wheat cultivar [158], may shed light on such controversies. Wheat aDNA recovered from waterlogged, desiccated, and (semi-)charred remains (grains, rachides, and/or spikes), provides a seminal resource for attempts to address wheat origin and evolution during the past 10,000 years of domestication [106–109, 159], as well as the impact of polyploidization (comparing diploid, tetraploid, and hexaploid wheats) in adaptation. Nevertheless, the extraction of aDNA from wheat remains is still challenging because of the diversity of the tissues considered and their conservation over time. The two different methods, classically used for plant aDNA extraction (proteinase K or cetyltrimethylammonium-bromide (CTAB); Table 2), still need to be refined for the retrieval of DNA from all types of plant remains, especially charred grains. Although charred seeds retain their morphological characteristics and are therefore suitable for botanical classification, the preservation of DNA within such materials remains so far unlikely [160].

Promising scientific avenues from sequenced ancient DNA

Beside solving phylogenetic questions regarding evolution, admixture, hybridization events, relationships between species or populations, domestication, and improvement processes, aDNA can provide new possibilities for addressing a number of issues related to plant adaptation and diversification.

Adaptation

Ongoing climate change, the steady growth of the human population worldwide, and increasing demand from emerging economies place food security at threat all over the world [161]. In addition, the demand for wood is growing continuously at a time when forest trees are exposed to rapidly increasing biotic and abiotic threats [162, 163]. These issues are of utmost importance in the context of ongoing climatic changes [164] and the rise in food and wood demand from the expanding world population [165]. The development of high-yielding, durably stress-resistant crops

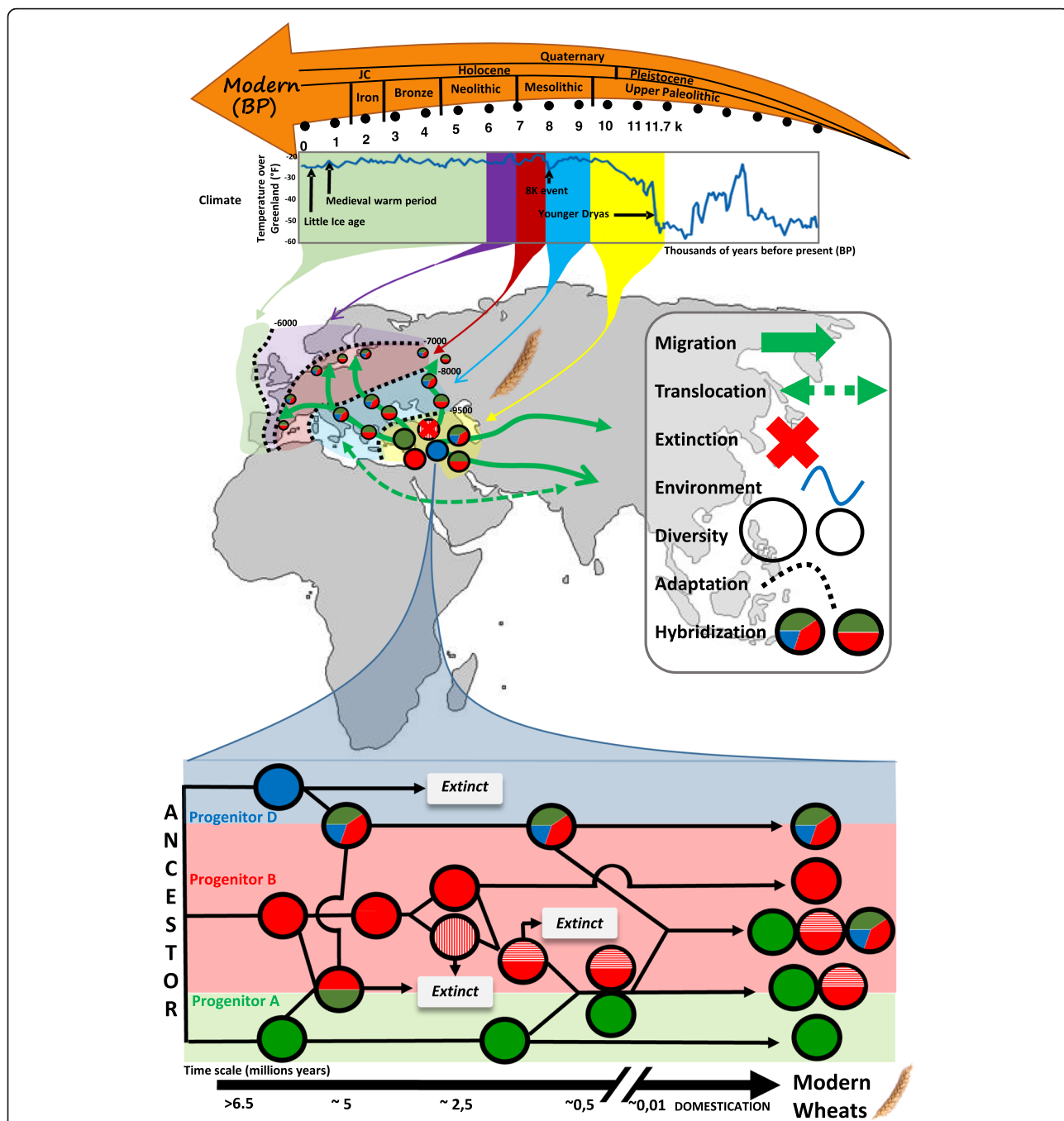


Fig. 4 Scientific insights gained from plant aDNA, as exemplified by wheat. *Top*: The geological periods are indicated at the top (orange arrow) above the associated temperature profiles (blue curve showing the variation of temperature at constant elevation (y-axis) over thousands of years before present (x-axis), modified from Cuffey and Clow [168]) and key climatic changes. *Center*: The known historical routes of wheat migration from the site of origin (Fertile Crescent) are indicated by green arrows: westwards via an inland route (through the Balkans to Central Europe) or along a coastal path (via Anatolia to the Mahgreb and Iberian peninsula); or eastwards via routes to the north and along the Inner Asian Mountain Corridor. Major migration phases are shown in different colors on the time scale. Diploid, tetraploid, and hexaploid wheats are depicted as colored circles (green, red, and blue colors) with mixed colors reflecting hybridization events. *Bottom*: Illustration of the hexaploid bread wheat paleohistory from progenitors (with some possibly extinct) A (green circles), B (red circles), and D (blue circles) shown at the left, along the time scale expressed in million years (left) at the bottom. Subgenomes (A, B, and D) are illustrated with circles so that hybridization events are highlighted with mixed color within circles (similar to the central panel). Modern (diploid, tetraploid, and hexaploid) species are illustrated at the right of the figure. Wheat aDNA offers the opportunity to investigate the impact of migration, translocation, extinction, and hybridization events in shaping the modern genetic diversity and in driving adaptation to environmental constraints (temperature variation) over 10,000 years of domestication and cultivation

and trees is thus paramount for the sustenance of future human societies. This challenge can be addressed in part through the identification, conservation, and exploitation, through genome-informed conservation and breeding strategies, of key genetic polymorphisms that enhance plant resilience in the face of environmental pressures [166]. Plants have faced temperature and water constraints in the past, including some similar to the +0.3°C to +4.8°C average increment by 2100 (depending on the model considered) predicted by the Intergovernmental Panel on Climate Change (IPCC; <http://www.ipcc.ch/>) [167]. In particular, the extended Holocene period has included multiple periods of short- and long-term climate change, including a particularly steep temperature increase at the beginning of the Holocene (about 11,700 years ago) and a climate optimum reached during the mid-Holocene (Fig. 4) [168]. The Holocene also witnessed the domestication of crops in the early Neolithic of the Fertile Crescent 10,000 to 8000 years ago and in other farming centers in Asia, Africa, and the Americas.

There is much to learn from the aDNA of early crops and their propagation and local adaptation outside of their native domestication area [169]. In particular, the possibility to obtain reliable estimates of the allelic trajectory at virtually any genomic locus during the major climate transitions that have occurred in the past opens an avenue towards the identification of the genetic variants that underlie adaptation to novel environmental conditions. They could represent priority targets for breeders and/or top-candidates for reintroduction into modern germplasm.

Diversification

Domestication and recent breeding have reduced the genetic diversity of modern cultivated germplasm. Looking for novel sources of diversity (currently absent not only from the elite pool but also from extant wild species and landraces) is a major concern for the sustained improvement of commercial lines. aDNA can deliver the genetic diversity that has been lost at several key time

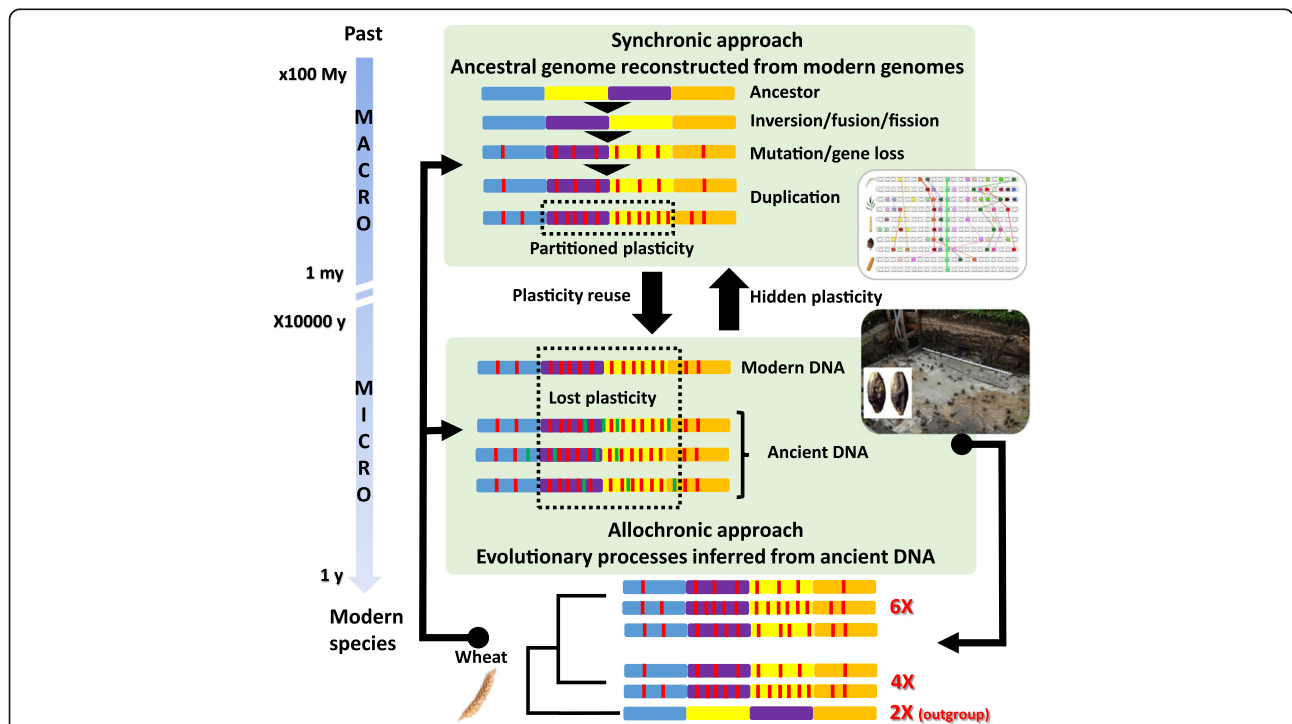


Fig. 5 Paleogenomics from ancestral genome reconstruction and aDNA recovery. Paleogenomics encompasses a synchronic approach (*top*), involving the reconstruction of ancestral genomes of several million years old (macro-evolution) from comparisons of modern genome sequences, and an allochronic approach (*bottom*), involving the recovery and analysis of ancient DNA from archaeobotanical remains of several hundreds or thousands of years old (micro-evolution). Both approaches are complementary in unveiling the impact of past evolutionary processes (million-years-old genomic rearrangements such as duplications and inversions, illustrated with *colored blocks*) on the diversity of the modern germplasm (thousand-years-old mutations illustrated with *red and green vertical bars*, the latter representing mutations that have been lost during domestication and/or the adaptation of modern species). Comparison of DNA from modern and ancient diploid (2X), tetraploid (4X), and hexaploid (6X) species offers the opportunity to investigate the genomic drivers (duplication, inversion, deletion, fusion, fission, mutation...) of plant evolution and adaptation to environmental constraints, as exemplified by wheat (*bottom*). Excavation and photo A.-M. et P. Pétrequin (CRAVA, CNRS) from Clairvaux-les-Lacs (Jura), CL VII, IVth Millennium BC

points during plant domestication, with the potential of reintroducing extinct loci (gene alleles) for key traits. Mutant screening technologies offer the opportunity to validate such variants functionally prior to their reintroduction. If these variants still segregate amongst wild relatives, they could be reintroduced through conventional marker-assisted breeding/selection programs; otherwise, they could be introduced through genome editing. Ultimately, aDNA investigations would allow us to uncover the content of the ‘lost’ diversity to be resurrected in modern germplasm (a process referenced to as ‘de-extinction’), which might be of utmost value for current breeding and conservation initiatives.

Novel scientific insights in paleogenomics that merge synchronic and allochronic approaches

The evolution of modern species can be investigated in detail through the analysis of ancient genomes. The indirect (synchronic) approach, derived from the computational reconstruction of ancestral genomes of several million years old (macro-evolution), is built on the comparison of the genomes of modern species. The direct (allochronic) approach derives from the recovery of ancient DNA from remains that are up to several tens of thousands of years old (micro-evolution). Embracing both synchronic and allochronic approaches into the growing field of paleogenomics is paramount to understanding how past macro- and micro-evolutionary processes shaped modern plant diversity (Fig. 5). Future advances can be expected in addressing whether recurrent genomic rearrangements (including polyploidization and diploidization events) have affected recent adaptation to environmental constraints and how the partitioning of genomic plasticity following polyploidization (producing stable and plastic genomic compartments) may have influenced the selective response to novel natural and/or anthropogenic pressures. In particular, the evolutionary frameworks presented above holds the potential to unveil the extent to which post-polyploidy subgenome plasticity (comparing sensitive (MF or S) and dominant (LF or D) genomic compartments) can be considered as a driving evolutionary force that provides a reservoir of novel mutations to be selected during selection or domestication in particular genomic regions. Such research questions pertaining to the role of polyploidy and partitioned genomic plasticity in the adaptive response to selection or domestication and climate change are highly novel and may provide the basis for technological innovations aimed at further developing the breeding capacity of the crop industry.

Abbreviations

AAK: Ancestral angiosperm karyotype; aDNA: Ancient DNA; AEK: Ancestral eudicot karyotype; AGK: Ancestral grass karyotype; AMK: Ancestral monocot karyotype; CAR: Contiguous ancestral region; CCF: Centromeric chromosome fusion; GO: Gene Ontology; K-Pg boundary: Cretaceous–Paleogene boundary;

mya: Million years ago; oPGs: Ordered protogenes; PPD: Post-polyploidization diploidization; pPGs: Putative protogenes; SB: Synteny block; SNP: Single nucleotide polymorphism; TCF: Telomeric chromosome fusion; WGD: Whole-genome duplication

Funding

Completion of this article was supported by the ‘Région Auvergne-Rhône-Alpes’ and FEDER ‘Fonds Européen de Développement Régional’ (#23000816 SRESRI 2015), Institut Carnot Plant2Pro (Project 2017 SyntenyViewer), AgreeSkills fellowship (Applicant ID #4146), ERC Advanced grant project TREEPEACE (#339728), and ANR projects H2oak (ANR-14-CE02-0013), PAGE (ANR-11-BSV6-0008) and GENOAK (ANR-11-BSV6-0009).

Authors’ contributions

CP, SW, AK, LO, CP, and JS jointly contributed to the work. All authors read and approved the final manuscript.

Competing interests

The authors declare that they have no competing interests.

Publisher’s Note

Springer Nature remains neutral with regard to jurisdictional claims in published maps and institutional affiliations.

Author details

¹INRA-UCA UMR 1095 Génétique Diversité et Ecophysiologie des Céréales, 63100 Clermont-Ferrand, France. ²Laboratoire d’Anthropobiologie Moléculaire et d’Imagerie de Synthèse, CNRS UMR 5288, allées Jules Guesde, Bâtiment A, 31000 Toulouse, France. ³INRA-Université Bordeaux UMR1202, Biodiversité Gènes et Communautés, 33610 Cestas, France. ⁴Centre for GeoGenetics, Natural History Museum of Denmark, Øster Voldgade, 1350K Copenhagen, Denmark.

Published online: 11 February 2019

References

- Bell CD, Soltis DE, Soltis PS. The age of the angiosperms: a molecular timescale without a clock. *Evolution*. 2005;59:1245–58.
- Magallon S. Using fossils to break long branches in molecular dating: a comparison of relaxed clocks applied to the origin of angiosperms. *Syst Biol*. 2010;59:384–99.
- Barba-Montoya J, Dos Reis M, Schneider H, Donoghue PCJ, Yang Z. Constraining uncertainty in the timescale of angiosperm evolution and the veracity of a Cretaceous Terrestrial Revolution. *New Phytol*. 2018;218:819–34.
- Friis EM, Pedersen KR, Crane PR. Cretaceous angiosperm flowers: innovation and evolution in plant reproduction. *Palaeogeogr Palaeoclimatol Palaeoecol*. 2006;232:251–93.
- Friis EM, Pedersen KR, Crane PR. Diversity in obscurity: fossil flowers and the early history of angiosperms. *Philos Trans R Soc Lond B Biol Sci*. 2010;365:369–82.
- Soltis DE, Bell CD, Kim S, Soltis PS. Origin and early evolution of angiosperms. *Ann N Y Acad Sci*. 2008;1133:3–25.
- Doyle JA. Molecular and fossil evidence on the origin of angiosperms. *Annu Rev Earth Planet Sci*. 2012;40:301–26.
- Ferguson-Smith MA, Trifonov V. Mammalian karyotype evolution. *Nat Rev Genet*. 2007;8:950–62.
- Nakatani Y, Takeda H, Kohara Y, Morishita S. Reconstruction of the vertebrate ancestral genome reveals dynamic genome reorganization in early vertebrates. *Genome Res*. 2007;17:1254–65.
- Ma J, Zhang L, Suh BB, Raney BJ, Burhans RC, Kent WJ, et al. Reconstructing contiguous regions of an ancestral genome. *Genome Res*. 2006;16:1557–65.
- Kim J, Farré M, Auvil L, Capitanu B, Larkin DM, Ma J, Lewin HA. Reconstruction and evolutionary history of eutherian chromosomes. *Proc Natl Acad Sci U S A*. 2017;114:E5379–88.
- Murphy WJ, Agarwala R, Schäffer AA, Stephens R, Smith C Jr, Crumpler NJ, et al. A rhesus macaque radiation hybrid map and comparative analysis with the human genome. *Genomics*. 2005;86:383–95.
- Hayden S, Bekaert M, Crider TA, Mariani S, Murphy WJ, Teeling EC. Ecological adaptation determines functional mammalian olfactory subgenomes. *Genome Res*. 2010;20:1–9.

14. Salse J. Ancestors of modern plant crops. *Curr Opin Plant Biol.* 2016; 30:134–42.
15. Pham SK, Pevzner PA. DRIMM-Synteny: decomposing genomes into evolutionary conserved segments. *Bioinformatics.* 2010;26:2509–16.
16. Proost S, Fostier J, De Witte D, Dhoedt B, Demeester P, Van de Peer Y, Vandepoele K. i-ADHoRe 3.0—fast and sensitive detection of genomic homology in extremely large data sets. *Nucleic Acids Res.* 2012;40:e11.
17. Cannon SB, Koziak A, Chan B, Michelmore R, Young ND. DiagHunter and GenoPix2D: programs for genomic comparisons, large-scale homology discovery and visualization. *Genome Biol.* 2003;4:R68.
18. Haas BJ, Delcher AL, Wortman JR, Salzberg SL. DAGChainer: a tool for mining segmental genome duplications and synteny. *Bioinformatics.* 2004; 20:3643–6.
19. Soderlund C, Bomhoff M, Nelson WM. SyMAP v3.4: a turnkey synteny system with application to plant genomes. *Nucleic Acids Res.* 2011;39:e68.
20. Wang Y, Tang H, DeBarry JD, Tan X, Li J, Wang X, et al. MCScanX: a toolkit for detection and evolutionary analysis of gene synteny and collinearity. *Nucleic Acids Res.* 2012;40:e49.
21. Jones BR, Rajaraman A, Tannier E, Chauve C. ANGES: reconstructing ANcestral GENomeS maps. *Bioinformatics.* 2012;28:2388–90.
22. Lin CH, Zhao H, Lowcay SH, Shahab A, Bourque G. webMGR: an online tool for the multiple genome rearrangement problem. *Bioinformatics.* 2010;26:408–10.
23. Murat F, Armero A, Pont C, Klopp C, Salse J. Reconstructing the genome of the most recent common ancestor of flowering plants. *Nat Genet.* 2017;49:490–6.
24. Ming R, VanBuren R, Wai CM, Tang H, Schatz MC, Bowers JE, et al. The pineapple genome and the evolution of CAM photosynthesis. *Nat Genet.* 2015;47:1435–42.
25. Schubert I, Lysak MA. Interpretation of karyotype evolution should consider chromosome structural constraints. *Trends Genet.* 2011;27:207–16.
26. Wang X, Jin D, Wang Z, Guo H, Zhang L, Wang L, et al. Telomere-centric genome repatterning determines recurring chromosome number reductions during the evolution of eukaryotes. *New Phytol.* 2015;205:378–89.
27. Lohaus R, Van de Peer Y. Of dups and dinos: evolution at the K/Pg boundary. *Curr Opin Plant Biol.* 2016;30:62–9.
28. Van de Peer Y, Maere S, Meyer A. The evolutionary significance of ancient genome duplications. *Nat Rev Genet.* 2009;10:725–32.
29. Van de Peer Y, Mizrachi E, Marchal K. The evolutionary significance of polyploidy. *Nat Rev Genet.* 2017;18:411–24.
30. Murat F, Zhang R, Guizard S, Gavranović H, Flores R, Steinbach D, et al. Karyotype and gene order evolution from reconstructed extinct ancestors highlight contrasts in genome plasticity of modern rosid crops. *Genome Biol Evol.* 2015;7:735–49.
31. Becerra JX. Timing the origin and expansion of the Mexican tropical dry forest. *Proc Natl Acad Sci U S A.* 2005;12:10919–23.
32. Couvreur TL, Franzke A, Al-Shehbaz IA, Bakker FT, Koch MA, Mummenhoff K. Molecular phylogenetics, temporal diversification, and principles of evolution in the mustard family (Brassicaceae). *Mol Biol Evol.* 2010;27:55–71.
33. Raymond O, Gouzy J, Just J, Badouin H, Verdenaud M, Lemainque A, et al. The Rosa genome provides new insights into the domestication of modern roses. *Nat Genet.* 2018;50:772–7.
34. Murat F, Louis A, Maumus F, Armero A, Cooke R, Quesneville H, et al. Understanding Brassicaceae evolution through ancestral genome reconstruction. *Genome Biol.* 2015;16:262.
35. Wu S, Shamimuzzaman M, Sun H, Salse J, Sui X, Wilder A, et al. The bottle gourd genome provides insights into Cucurbitaceae evolution and facilitates mapping of a Papaya ring-spot virus resistance locus. *Plant J.* 2017;92:963–75.
36. Wang J, Sun P, Li Y, Liu Y, Yu J, Ma X, et al. Hierarchically aligning 10 legume genomes establishes a family-level genomics platform. *Plant Physiol.* 2017;174:284–300.
37. Wang X, Wang J, Jin D, Guo H, Lee TH, Liu T, Paterson AH. Genome alignment spanning major Poaceae lineages reveals heterogeneous evolutionary rates and alters inferred dates for key evolutionary events. *Mol Plant.* 2015;8:885–98.
38. Murat F, Xu JH, Tannier E, Abrouk M, Guilhot N, Pont C. Ancestral grass karyotype reconstruction unravels new mechanisms of genome shuffling as a source of plant evolution. *Genome Res.* 2010;20:1545–57.
39. Murat F, Zhang R, Guizard S, Flores R, Armero A, Pont C, et al. Shared subgenome dominance following polyploidization explains grass genome evolutionary plasticity from a seven protochromosome ancestor with 16K protogenes. *Genome Biol Evol.* 2014;6:12–33.
40. Salse J, Bolot S, Throude M, Jouffe V, Piegu B, Quraishi UM, et al. Identification and characterization of shared duplications between rice and wheat provide new insight into grass genome evolution. *Plant Cell.* 2008;20:11–24.
41. Soltis PS, Marchant DB, Van de Peer Y, Soltis DE. Polyploidy and genome evolution in plants. *Curr Opin Genet Dev.* 2015;35:119–25.
42. Hollister JD. Polyploidy: adaptation to the genomic environment. *New Phytol.* 2015;205:1034–9.
43. Louis A, Murat F, Salse J, Crollius HR. GenomicusPlants: a web resource to study genome evolution in flowering plants. *Plant Cell Physiol.* 2015;56:e4.
44. Lyons E, Pedersen B, Kane J, Alam M, Ming R, Tang H, et al. Finding and comparing syntenic regions among *Arabidopsis* and the outgroups papaya, poplar, and grape: CoGe with rosids. *Plant Physiol.* 2008;148:1772–81.
45. Proost S, Van Bel M, Vaneechoutte D, Van de Peer Y, Inzé D, Mueller-Roeber B, Vandepoele K. PLAZA 3.0: an access point for plant comparative genomics. *Nucleic Acids Res.* 2015;42(Database issue):D974–81.
46. Valluru R, Reynolds MP, Salse J. Genetic and molecular bases of yield-associated traits: a translational biology approach between rice and wheat. *Theor Appl Genet.* 2014;127:1463–89.
47. Bordat A, Savoie V, Nicolas M, Salse J, Chauveau A, Bourgeois M, et al. Translational genomics in legumes allowed placing in silico 5460 unigenes on the pea functional map and identified candidate genes in *Pisum sativum* L. G3 (Bethesda). 2011;1:93–103.
48. Dobrovolskaya O, Pont C, Sibout R, Martinek P, Badaeva E, Murat F, et al. FRIZZY PANICLE drives supernumerary spikelets in bread wheat. *Plant Physiol.* 2015;167:189–99.
49. Liang Z, Schnable JC. Functional divergence between subgenomes and gene pairs after whole genome duplications. *Mol Plant.* 2018;11:388–97.
50. Cheng F, Wu J, Fang L, Sun S, Liu B, Lin K, et al. Biased gene fractionation and dominant gene expression among the subgenomes of *Brassica rapa*. *PLoS One.* 2012;7:e36442.
51. Cheng F, Sun C, Wu J, Schnable J, Woodhouse MR, Liang J, et al. Epigenetic regulation of subgenome dominance following whole genome triplication in *Brassica rapa*. *New Phytol.* 2016;211:288–99.
52. Cheng F, Sun R, Hou X, Zheng H, Zhang F, Zhang Y, et al. Subgenome parallel selection is associated with morphotype diversification and convergent crop domestication in *Brassica rapa* and *Brassica oleracea*. *Nat Genet.* 2016;48:1218–24.
53. Pophaly SD, Tellier A. Population level purifying selection and gene expression shape subgenome evolution in mMaize. *Mol Biol Evol.* 2015; 32:3226–35.
54. Garsmeur O, Schnable JC, Almeida A, Jourda C, D'Hont A, Freeling M. Two evolutionarily distinct classes of paleopolyploidy. *Mol Biol Evol.* 2014;31:448–54.
55. Mandáková T, Lysak MA. Post-polyploid diploidization and diversification through dysploid changes. *Curr Opin Plant Biol.* 2018;42:55–65.
56. Gou X, Bian Y, Zhang A, Zhang H, Wang B, Lv R, et al. Transgenerationally precipitated meiotic chromosome instability fuels rapid karyotypic evolution and phenotypic diversity in an artificially constructed allotetraploid wheat (AADD). *Mol Biol Evol.* 2018;35:1078–91.
57. Marciniak S, Perry GH. Harnessing ancient genomes to study the history of human adaptation. *Nat Rev Genet.* 2017;18:659–74.
58. Lynch VJ, Bedoya-Reina OC, Ratan A, Sulak M, Drautz-Moses DI, Perry GH, et al. Elephantid genomes reveal the molecular bases of woolly mammoth adaptations to the Arctic. *Cell Rep.* 2015;12:217–28.
59. Park SD, Magee DA, McGettigan PA, Teasdale MD, Edwards CJ, Lohan AJ, et al. Genome sequencing of the extinct Eurasian wild aurochs, *Bos primigenius*, illuminates the phylogeography and evolution of cattle. *Genome Biol.* 2015;16:234.
60. Gaunite C, Fages A, Hanghøj K, Albrechtsen A, Khan N, Schubert M, et al. Ancient genomes revisit the ancestry of domestic and Przewalski's horses. *Science.* 2018;360:111–4.
61. Frantz LA, Mullin VE, Pionnier-Capitan M, Lebrasseur O, Ollivier M, Perri A, et al. Genomic and archaeological evidence suggest a dual origin of domestic dogs. *Science.* 2016;352:1228–31.
62. Rasmussen M, Guo X, Wang Y, Lohmueller KE, Rasmussen S, Albrechtsen A, et al. An Aboriginal Australian genome reveals separate human dispersals into Asia. *Science.* 2011;334:94–8.

63. Racimo F, Sankararaman S, Nielsen R, Huerta-Sánchez E. Evidence for archaic adaptive introgression in humans. *Nat Rev Genet.* 2015;16:359–71.
64. Leonardi M, Librado P, Der Sarkissian C, Schubert M, Alfarhan AH, Alquraishi SA, et al. Evolutionary patterns and processes: lessons from ancient DNA. *Syst Biol.* 2017;66:e1–29.
65. Nielsen R, Bustamante C, Clark AG, Glanowski S, Sackton TB, Hubisz MJ, et al. A scan for positively selected genes in the genomes of humans and chimpanzees. *PLoS Biol.* 2005;3:e170.
66. Malaspina AS, Lao O, Schroeder H, Rasmussen M, Raghavan M, Moltke I, et al. Two ancient human genomes reveal Polynesian ancestry among the indigenous Botocudos of Brazil. *Curr Biol.* 2014;24:R1035–7.
67. Schraiber JG, Evans SN, Slatkin M. Bayesian inference of natural selection from allele frequency time series. *Genetics.* 2016;203:493–511.
68. Ramakrishnan U, Hadly EA. Using phylochronology to reveal cryptic population histories: review and synthesis of 29 ancient DNA studies. *Mol Ecol.* 2009;18:1310–30.
69. Mourier T, Ho SY, Gilbert MT, Willerslev E, Orlando L. Statistical guidelines for detecting past population shifts using ancient DNA. *Mol Biol Evol.* 2012;29:2241–51.
70. Orlando L, Gilbert MT, Willerslev E. Reconstructing ancient genomes and epigenomes. *Nat Rev Genet.* 2015;16:395–408.
71. Shendure J, Balasubramanian S, Church GM, Gilbert W, Rogers J, Schloss JA, Waterston RH. DNA sequencing at 40: past, present and future. *Nat Rev.* 2017;550:345–53.
72. Metzker ML. Sequencing technologies—the next generation. *Nat Rev Genet.* 2010;11:31–46.
73. Green RE, Krause J, Ptak SE, Briggs AW, Ronan MT, Simons JF, et al. Analysis of one million base pairs of Neanderthal DNA. *Nature.* 2006;444:330–6.
74. Gilbert MT, Drautz DI, Lesk AM, Ho SY, Qi J, Ratan A, et al. Intraspecific phylogenetic analysis of Siberian woolly mammoths using complete mitochondrial genomes. *Proc Natl Acad Sci U S A.* 2008;105:8327–32.
75. Gamba C, Jones ER, Teasdale MD, McLaughlin RL, Gonzalez-Fortes G, Mattiangeli V, et al. Genome flux and stasis in a five millennium transect of European prehistory. *Nat Commun.* 2014;5:5257.
76. Damgaard PB, Margaryan A, Schroeder H, Orlando L, Willerslev E, Allentoft ME. Improving access to endogenous DNA in ancient bones and teeth. *Sci Rep.* 2015;5:11184.
77. Der Sarkissian C, Pichereau V, Dupont C, Ilse PC, Perrigault M, Butler P, et al. Ancient DNA analysis identifies marine mollusc shells as new metagenomic archives of the past. *Mol Ecol Resour.* 2017;17:835–53.
78. Dabney J, Meyer M, Pääbo S. Ancient DNA damage. *Cold Spring Harb Perspect Biol.* 2013;5(7).
79. Gamba C, Hanghøj K, Gaunitz C, Alfarhan AH, Alquraishi SA, Al-Rasheid KA, et al. Comparing the performance of three ancient DNA extraction methods for high-throughput sequencing. *Mol Ecol Resour.* 2016;16:459–69.
80. Der Sarkissian C, Ermini L, Jónsson H, Alekseev AN, Crubezy E, Shapiro B, Orlando L. Shotgun microbial profiling of fossil remains. *Mol Ecol.* 2014;23:1780–98.
81. Korlević P, Gerber T, Gansauge MT, Hajdinjak M, Nagel S, Aximu-Petri A, Meyer M. Reducing microbial and human contamination in DNA extractions from ancient bones and teeth. *Biotechniques.* 2015;59:87–93.
82. Boessenkool S, Hanghøj K, Nistelberger HM, Der Sarkissian C, Gondek AT, Orlando L, et al. Combining bleach and mild predigestion improves ancient DNA recovery from bones. *Mol Ecol Resour.* 2017;17:742–51.
83. Slon V, Hopfe C, Weiß CL, Mafessoni F, de la Rasilla M, Lalueza-Fox C, et al. Neandertal and Denisovan DNA from Pleistocene sediments. *Science.* 2017;356:605–8.
84. Seguin-Orlando A, Schubert M, Clary J, Stagegaard J, Alberdi MT, Prado JL, et al. Ligation bias in Illumina next-generation DNA libraries: implications for sequencing ancient genomes. *PLoS One.* 2013;8:e78575.
85. Dabney J, Meyer M. Length and GC-biases during sequencing library amplification: a comparison of various polymerase-buffer systems with ancient and modern DNA sequencing libraries. *Biotechniques.* 2012;52:87–94.
86. Gansauge MT, Meyer M. Single-stranded DNA library preparation for the sequencing of ancient or damaged DNA. *Nat Protoc.* 2013;8:737–48.
87. Gansauge MT, Meyer M. Selective enrichment of damaged DNA molecules for ancient genome sequencing. *Genome Res.* 2014;24:1543–9.
88. Marčić T, Whitten M, Pääbo S. Multiplexed DNA sequence capture of mitochondrial genomes using PCR products. *PLoS One.* 2011;5:e14004.
89. Fabre PH, Vilstrup JT, Raghavan M, Sarkissian CD, Willerslev E, Douzery EJ, Orlando L. Rodents of the Caribbean: origin and diversification of hutias unravelled by next-generation museomics. *Biol Lett.* 2014;10.
90. Lipson M, Skoglund P, Spriggs M, Valentin F, Bedford S, Shing R, et al. Population turnover in remote Oceania shortly after initial settlement. *Curr Biol.* 2018;28:1157–65.
91. Carpenter ML, Buenrostro JD, Valdiosera C, Schroeder H, Allentoft ME, Sikora M, et al. Pulling out the 1%: whole-genome capture for the targeted enrichment of ancient DNA sequencing libraries. *Am J Hum Genet.* 2013;93:852–64.
92. Enk JM, Devault AM, Kuch M, Murgha YE, Rouillard JM, Poinar HN. Ancient whole genome enrichment using baits built from modern DNA. *Mol Biol Evol.* 2014;31:1292–4.
93. Ginolhac A, Rasmussen M, Gilbert MT, Willerslev E, Orlando L. mapDamage: testing for damage patterns in ancient DNA sequences. *Bioinformatics.* 2011;27:2153–5.
94. Jónsson H, Ginolhac A, Schubert M, Johnson PL, Orlando L. mapDamage2.0: fast approximate Bayesian estimates of ancient DNA damage parameters. *Bioinformatics.* 2013;29:1682–4.
95. Skoglund P, Sjödin P, Skoglund T, Lascoux M, Jakobsson M. Investigating population history using temporal genetic differentiation. *Mol Biol Evol.* 2014;31:2516–27.
96. Schubert M, Ginolhac A, Lindgreen S, Thompson JF, Al-Rasheid KA, Willerslev E, et al. Improving ancient DNA read mapping against modern reference genomes. *BMC Genomics.* 2012;13:178.
97. Schubert M, Jónsson H, Chang D, Der Sarkissian C, Ermini L, Ginolhac A, et al. Prehistoric genomes reveal the genetic foundation and cost of horse domestication. *Proc Natl Acad Sci U S A.* 2014;111:E5661–9.
98. Kerpedjiev P, Frelsen J, Lindgreen S, Krogh A. Adaptable probabilistic mapping of short reads using position specific scoring matrices. *BMC Bioinformatics.* 2014;15:100.
99. Taron UH, Lell M, Barlow A, Pajmans JLA. Testing of alignment parameters for ancient samples: evaluating and optimizing mapping parameters for ancient samples using the TAPAS tool. *Genes (Basel).* 2018;9(3).
100. Fordyce SL, Ávila-Arcos MC, Rasmussen M, Cappellini E, Romero-Navarro JA, Wales N, et al. Deep sequencing of RNA from ancient maize kernels. *PLoS One.* 2013;8:e50961.
101. Willerslev E, Cooper A. Ancient DNA. *Proc Biol Sci.* 2005;272(1558):3–16.
102. Gutaker RM, Burbano HA. Reinforcing plant evolutionary genomics using ancient DNA. *Curr Opin Plant Biol.* 2017;36:38–45.
103. Palmer SA, Moore JD, Clapham AJ, Rose P, Allaby RG. Archaeogenetic evidence of ancient nubian barley evolution from six- to two-row indicates local adaptation. *PLoS One.* 2009;4:e6301.
104. Mascher M, Schuenemann VJ, Davidovich U, Marom N, Himmelbach A, Hübner S, et al. Genomic analysis of 6,000-year-old cultivated grain illuminates the domestication history of barley. *Nat Genet.* 2016;48:1089–93.
105. Fernández E, Thaw S, Brown TA, Arroyo-Pardo E, Buxó R, Serret MD, Araus JL. DNA analysis in charred grains of naked wheat from several archaeological sites in Spain. *J Archaeol Sci.* 2013;40:659–70.
106. Allaby RG, O'Donoghue K, Sallares R, Jones MK, Brown TA. Evidence for the survival of ancient DNA in charred wheat seeds from European archaeological sites. *Anc Biomol.* 1997;1:119–29.
107. Li C, Lister DL, Li H, Xu Y, Cui Y, Bower MA, et al. Ancient DNA analysis of desiccated wheat grains excavated from a Bronze Age cemetery in Xinjiang. *J Archaeol Sci.* 2011;38:115–9.
108. Oliveira HR, Civián P, Morales J, Rodríguez-Rodríguez A, Lister D, Jones MR. Ancient DNA in archaeological wheat grains: preservation conditions and the study of pre-Hispanic agriculture on the island of Gran Canaria (Spain). *J Archaeol Sci.* 2012;39:828–35.
109. Bilgic H, Hakkı EE, Pandey A, Khan MK, Akkaya MS. Ancient DNA from 8400 year-old Çatalhöyük wheat: implications for the origin of Neolithic agriculture. *PLoS One.* 2016;11:e0151974.
110. Goloubinoff P, Pääbo S, Wilson AC. Evolution of maize inferred from sequence diversity of an Adh2 gene segment from archaeological specimens. *Proc Natl Acad Sci U S A.* 1993;90:1997–2001.
111. Rollo F, Ascì W, Sassaroli S. Conservation of plant genes II: utilization of ancient and modern DNA. *Missouri: Missouri Botanical Garden; 1994.* p. 27–35.
112. Freitas FO, Bendel G, Allaby RG, Brown TA. DNA from primitive maize landraces and archaeological remains: implications for the domestication of maize and its expansion into South America. *J Archaeol Sci.* 2003;30:901–8.
113. Jaenicke-Després V, Buckler ES, Smith BD, Gilbert MT, Cooper A, Doebley J, Pääbo S. Early allelic selection in maize as revealed by ancient DNA. *Science.* 2003;302:1206–8.

114. Lia W, Confolonieri VA, Ratto N, Hernández JA, Alzogaray AM, Poggio L, Brown TA. Microsatellite typing of ancient maize: insights into the history of agriculture in southern South America. *Proc R Soc Lond B Biol Sci.* 2007;274:545–54.
115. da Fonseca RR, Smith BD, Wales N, Cappellini E, Skoglund P, Fumagalli M, et al. The origin and evolution of maize in the Southwestern United States. *Nat Plants.* 2015;1:14003.
116. Ramos-Madriral J, Smith BD, Moreno-Mayar JV, Gopalakrishnan S, Ross-Ibarra J, Gilbert MTP, Wales N. Genome Sequence of a 5,310-year-old maize cob provides insights into the early stages of maize domestication. *Curr Biol.* 2016;26:3195–201.
117. Vallebuena-Estrada M, Rodríguez-Arévalo I, Rougon-Cardoso A, Martínez González J, García Cook A, Montiel R, Vielle-Calzada JP. The earliest maize from San Marcos Tehuacán is a partial domesticate with genomic evidence of inbreeding. *Proc Natl Acad Sci U S A.* 2016;113:14151–6.
118. Pérez-Zamorano B, Vallebuena-Estrada M, Martínez González J, García Cook A, Montiel R, Vielle-Calzada JP, Delaye L. Organellar genomes from a ~5,000-year-old archaeological maize sample are closely related to NB genotype. *Genome Biol Evol.* 2017;9:904–15.
119. Wales N, Akman M, Watson RHB, Sánchez Barreiro F, Smith BD, Gremillion KJ, et al. Ancient DNA reveals the timing and persistence of organellar genetic bottlenecks over 3,000 years of sunflower domestication and improvement. *Evolutionary Applications.* 2018;12(1):38–53.
120. Manen JF, Boubry L, Dalnoki O, Marinval P, Turgay M, Schlumbaum A. Microsatellites from archaeological *Vitis vinifera* seeds allow a tentative assignment of the geographical origin of ancient cultivars. *J Archaeol Sci.* 2003;30:721–9.
121. Cappellini E, Gilbert MT, Geuna F, Fiorentino G, Hall A, Thomas-Oates J, et al. A multidisciplinary study of archaeological grape seeds. *Naturwissenschaften.* 2010;97:205–17.
122. Wales N, Andersen K, Cappellini E, Avila-Arcos MC, Gilbert MT. Optimization of DNA recovery and amplification from non-carbonized archaeobotanical remains. *PLoS One.* 2014;9:e86827.
123. Kistler L, Montenegro A, Smith BD, Gifford JA, Green RE, Newsom LA, Shapiro B. Transoceanic drift and the domestication of African bottle gourds in the Americas. *Proc Natl Acad Sci U S A.* 2014;111:2937–41.
124. O'Donoghue K, Clapham A, Evershed RP, Brown TA. Remarkable preservation of biomolecules in ancient radish seeds. *Proc Biol Sci.* 1996;263:541–7.
125. Deakin WJ, Rowley-Conwy PJ, Shaw CH. Amplification and sequencing of DNA from preserved sorghum of up to 2800 years antiquity found at Qasr Ibrim. *Ancient Biomolecules.* 1998;2:27–41.
126. Marota I, Basile C, Ubaldi M, Rollo F. DNA decay rate in papyri and human remains from Egyptian archaeological sites. *Am J Phys Anthropol.* 2002;117:310–8.
127. Fan LJ, Gui YJ, Zheng YF, Wang Y, Cai DG, You XL. Ancient DNA sequences of rice from the low Yangtze reveal significant genotypic divergence. *Chin Sci Bull.* 2011;56:3108.
128. Elbaum R, Melamed-Bessudo C, Boaretto E, Galili E, Lev-Yadun S, Levy AA, Weiner S. Ancient olive DNA in pits: preservation, amplification and sequence analysis. *J Archaeol Sci.* 2006;33:77–88.
129. Mazo L, Gómez A, Quintanilla S, Bernal J, Ortiz P, Valdivieso SJ. Extraction and amplification of DNA from orchid exsiccates conserved for more than half a century in a herbarium in Bogotá. Colombia. *Lankesteriana.* 2012;12:121–9.
130. Pollmann B, Jacomet S, Schlumbaum A. Morphological and genetic studies of waterlogged *Prunus* species from the Roman vicus Tasgetium (Eschenz, Switzerland). *J Archaeol Sci.* 2005;32:1471–80.
131. Gutaker RM, Reiter E, Furtwängler A, Schuenemann VJ, Burbano HA. Extraction of ultrashort DNA molecules from herbarium specimens. *Biotechniques.* 2017;62:76–9.
132. Palmer SA, Clapham AJ, Rose P, Freitas FO, Owen BD, Beresford-Jones D, et al. Archaeogenomic evidence of punctuated genome evolution in *Gossypium*. *Mol Biol Evol.* 2012;29:2031–8.
133. Tani N, Tsumura Y, Sato H. Nuclear gene sequences and DNA variation of *Cryptomeria japonica* samples from the postglacial period. *Mol Ecol.* 2003;12:859–68.
134. Deguilloux MF, Bertel L, Celant A, Pemonge MH, Sadori L, Magri D, Pett RJ. Genetic analysis of archaeological wood remains: first results and prospects. *J Archaeol Sci.* 2006;33:1216–27.
135. Liepelt S, Sperisen C, Deguilloux MF, Petit RJ, Kissling R, Spencer M, et al. Authenticated DNA from ancient wood remains. *Ann Bot.* 2006;98:1107–11.
136. Lendvay B, Hartmann M, Brodbeck S, Nievergelt D, Reinig F, Zoller S, et al. Improved recovery of ancient DNA from subfossil wood—application to the world's oldest Late Glacial pine forest. *New Phytol.* 2017;217:1737–48.
137. Di Donato A, Filippone E, Ercolano MR, Frusciante L. Genome sequencing of ancient plant remains: findings, uses and potential applications for the study and improvement of modern crops. *Front Plant Sci.* 2018;9:441.
138. Parducci L, Jørgensen T, Tollefsrud MM, Elverland E, Alm T, Fontana SL, et al. Glacial survival of boreal trees in northern Scandinavia. *Science.* 2012;335:1083–6.
139. Soltis PS, Soltis DE, Smiley CJ. An rbcL sequence from a Miocene *Taxodium* (bald cypress). *Proc Natl Acad Sci U S A.* 1992;89:449–51.
140. Wan QH, Wu H, Fujihara T, Fang SG. Which genetic marker for which conservation genetics issue? *Electrophoresis.* 2004;25:2165–76.
141. Weiß CL, Schuenemann VJ, Devos J, Shirsekar G, Reiter E, Gould BA, et al. Temporal patterns of damage and decay kinetics of DNA retrieved from plant herbarium specimens. *R Soc Open Sci.* 2016;3:160239.
142. Wagner S, Lagane F, Seguin-Orlando A, Schubert M, Leroy T, Guichoux E, et al. High-throughput DNA sequencing of ancient wood. *Mol Ecol.* 2018;27:1138–54.
143. Rollo F. Characterisation by molecular hybridization of RNA fragments isolated from ancient (1400 B.C.) seeds. *Theor Appl Genet.* 1985;71:330–3.
144. Smith O, Clapham AJ, Rose P, Liu Y, Wang J, Allaby RG. Genomic methylation patterns in archaeological barley show de-methylation as a time-dependent diagenetic process. *Sci Rep.* 2014;4:5559.
145. Smith O, Clapham A, Rose P, Liu Y, Wang J, Allaby RG. A complete ancient RNA genome: identification, reconstruction and evolutionary history of archaeological Barley Stripe Mosaic Virus. *Sci Rep.* 2014;4:4003.
146. Smith O, Palmer SA, Clapham AJ, Rose P, Liu Y, Wang J, Allaby RG. Small RNA activity in archeological barley shows novel germination inhibition in response to environment. *Mol Biol Evol.* 2017;34:2555–62.
147. Meyer RS, DuVal AE, Jensen HR. Patterns and processes in crop domestication: an historical review and quantitative analysis of 203 global food crops. *New Phytol.* 2012;196:29–48.
148. Feldman M, Levy AA. Genome evolution due to allopolyploidization in wheat. *Genetics.* 2012;192:763–74.
149. Pont C, Salse J. Wheat paleohistory created asymmetrical genomic evolution. *Curr Opin Plant Biol.* 2017;36:29–37.
150. Asouti E, Fuller DQ. A contextual approach to the emergence of agriculture in Southwest Asia reconstructing Early Neolithic plant-food production. *Curr Anthropol.* 2013;54:299–345.
151. Brown TA, Jones MK, Powell W, Allaby RG. The complex origins of domesticated crops in the Fertile Crescent. *Trends Ecol Evol.* 2009;24:103–9.
152. Szécsényi-Nagy A, Brandt G, Haak W, Keerl V, Jakucs J, Möller-Rieker S, et al. Tracing the genetic origin of Europe's first farmers reveals insights into their social organization. *Proc Biol Sci.* 2015;282(1805).
153. Jordan KW, Wang S, Lun Y, Gardiner LJ, MacLachlan R, Hucl P, et al. A haplotype map of allohexaploid wheat reveals distinct patterns of selection on homoeologous genomes. *Genome Biol.* 2015;16:48.
154. Jacomet S, Schlichtherle H. Der kleine Pfahlbauweizen Oswald Heer's—Neue Untersuchungen zur Morphologie neolithischer Nacktweizen-Ähren. In: Van Zeist W, Casparie WA, editors. *Plants and ancient man: studies in palaeoethnobotany.* Rotterdam: A. A. Balkema; 1984. p. 153–76.
155. Maier U. Morphological studies of free-threshing wheat ears from a Neolithic site in southwest Germany, and the history of the naked wheats. *Veget Hist Archaeobot.* 1996;5:39–55.
156. Zohary D, Hopf M. *Domestication of plants in the Old World.* New York: Oxford University Press; 2000.
157. Jones G, Valamoti S, Charles M. Early crop diversity: a 'new' glume wheat from northern Greece. *Veget Hist Archaeobot.* 2000;9:133–46.
158. Brown TA, Allaby RG, Sallares R, Jones G. Ancient DNA in charred wheats: taxonomic identification of mixed and single grains. *Ancient Biomolecules.* 1998;2:185–93.
159. Allaby RG, Banerjee M, Brown TA. Evolution of the high molecular weight glutenin loci of the A, B, D, and G genomes of wheat. *Genome.* 1999;42:296–307.
160. Nistelberger HM, Smith O, Wales N, Star B, Boessenkool S. The efficacy of high-throughput sequencing and target enrichment on charred archaeobotanical remains. *Sci Rep.* 2016;6:37347.
161. Baltos ULC, Hertel TW. Global food security in 2050: the role of agricultural productivity and climate change. *Aust J Agric Resour Econ.* 2014;58:554–70.
162. Allen CD, Macalady AK, Chenchouni H, Bachele D, McDowell N, Vennetier M, et al. A global overview of drought and heat induced tree mortality reveals emerging climate change risks for forests. *For Ecol Manage.* 2010;259:660–84.

163. Birdsey R, Pan Y. Trends in management of the world's forests and impacts on carbon stocks. For Ecol Manage. 2015;355:83–90.
164. Habash DZ, Kehel Z, Nachit M. Genomic approaches for designing durum wheat ready for climate change with a focus on drought. J Exp Bot. 2009;60:2805–15.
165. Boyer JS, Westgate ME. Grain yields with limited water. J Exp Bot. 2004;55:2385–94.
166. Shafer AB, Wolf JB, Alves PC, Bergström L, Bruford MW, Brännström I, et al. Genomics and the challenging translation into conservation practice. Trends Ecol Evol. 2015;30:78–87.
167. Marcott SA, Shakun JD, Clark PU, Mix AC. A reconstruction of regional and global temperature for the past 11,300 years. Science. 2013;339:1198–201.
168. Cuffey KM, Clow GD. Temperature, accumulation, and ice sheet elevation in central Greenland through the last deglacial transition. Journal of Geophysical Research 1997;102:26383–26396.
169. Allaby RG, Gutaker R, Clarke AC, Pearson N, Ware R, Palmer SA, et al. Using archaeogenomic and computational approaches to unravel the history of local adaptation in crops. Philos Trans R Soc Lond B Biol Sci. 2015;370:20130377.