



**HAL**  
open science

## Correlation between black crust formation on limestone monuments and air pollution

Aurélie Verney-Carron, Mandana Saheb, Yasmine Ben Amor, Clarisse Bolou Bi Balland

### ► To cite this version:

Aurélie Verney-Carron, Mandana Saheb, Yasmine Ben Amor, Clarisse Bolou Bi Balland. Correlation between black crust formation on limestone monuments and air pollution. Goldschmidt 2019, Aug 2019, Barcelone, France. hal-02277446

**HAL Id: hal-02277446**

**<https://hal.science/hal-02277446>**

Submitted on 3 Sep 2019

**HAL** is a multi-disciplinary open access archive for the deposit and dissemination of scientific research documents, whether they are published or not. The documents may come from teaching and research institutions in France or abroad, or from public or private research centers.

L'archive ouverte pluridisciplinaire **HAL**, est destinée au dépôt et à la diffusion de documents scientifiques de niveau recherche, publiés ou non, émanant des établissements d'enseignement et de recherche français ou étrangers, des laboratoires publics ou privés.

# Correlation between black crust formation on limestone monuments and air pollution

Aurélien VERNEY-CARRON<sup>1</sup>, Mandana SAHEB<sup>1</sup>, Yasmine BEN AMOR<sup>1</sup>, Clarisse BALLAND<sup>2</sup>  
 BOLOU-BI & ICP-Materials network  
<sup>1</sup> LISA, UMR CNRS 7583, Université Paris-Est Créteil, Université de Paris, Institut Pierre Simon Laplace, Créteil, France  
<sup>2</sup> LEESU, UMR MA 102, Université Paris-Est Créteil, Ecole des Ponts ParisTech, AgroParisTech, Créteil, France  
 Contact: aurelie.verney@lisa.u-pec.fr / Information on ICP-Materials: www.corr-institute.se/icp-materials/web/page.aspx

## INTRODUCTION

Impacts of air pollution on health and environment are a major issue. The addition of pollutants in the atmosphere is responsible for 4.2 million deaths every year and threatens 91% of the world's population (according to the World Health Organization). It also causes the reduction of agricultural yields, damage to ecosystems and degradation of historical monuments.  
 On monuments out of calcareous stones, air pollution leads to the formation of black crusts in sheltered zones (Fig. 1). Black crusts result from a sulfation reaction (SO<sub>2</sub> reacts with calcite to form gypsum (CaSO<sub>4</sub>·2H<sub>2</sub>O)) and the entrapment of particles (especially soot), causing its blackening [1-3].  
 In order to understand the first steps of this alteration and to investigate the influence of the environment, samples of limestone and marble were exposed in different sites for 1 year.



## METHODOLOGY

### EXPOSURE CAMPAIGN AND ENVIRONMENT

An exposure campaign was performed in the framework of the International Co-operative Programme on Effects on Materials including Historic and Cultural Monuments (ICP-Materials, Chairs: J. Tidblad & P. Spezzano).

Samples of 'Saint Maximin roche fine' limestone and Carrara marble (6 x 6 x 1 cm) were exposed in sheltered conditions and in vertical position (Fig. 2) in 22 European sites and 1 site in USA (Fig. 3).

In parallel, environmental data were collected by each site: T° and RH for the climate and [SO<sub>2</sub>], [NO<sub>2</sub>], [PM<sub>10</sub>] using passive samplers (from IVL Swedish Environmental Research Institute) for pollution.

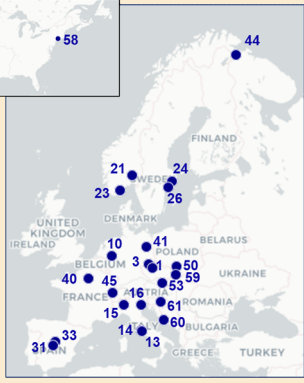


Fig. 3. Map of the exposure sites : 1-Prague, 3-Kopisty, 10-Bottrop, 13-Rome, 14-Casaccia, 15-Milano, 16-Venice, 21-Oslo, 23-Birkenes, 24-Stockholm, 26-Aspreven, 31-Madrid, 33-Toledo, 40-Paris, 41-Berlin, 44-Svanvik, 45-Chaumont, 50-Katowice, 53-Vienna, 58-New Haven, 59-Zlina, 60-Zagreb, 61-Split



**GLOBAL MEASUREMENTS:**  
 The samples were characterized by weighing (mass of deposit), optical microscopy coupled with image processing (percentage of covered surface) and spectrophotometry (percentage of reflectance change).  
**DEPOSIT CHARACTERIZATION:**  
 The deposit was analyzed using SEM-EDS (Scanning Electron Microscopy – Energy Dispersive Spectrometer) and Raman spectroscopy. One piece of each sample (~10g) was cut and solubilized in a stirred vial of 20 mL of ultrapure water for 24h. Solutions were analyzed using ICP-AES (Inductively Coupled Plasma – Atomic Emission Spectrometry).

## RESULTS AND DISCUSSION

### MASS OF DEPOSIT

The mass of deposit was only measured for marble and glass (loss of material during handling and transport on the limestone samples). The available results are presented on Fig. 4a.

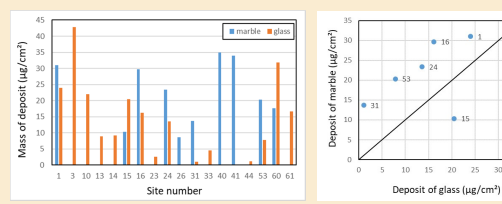


Fig. 4. (a) Mass of the deposit (in µg/cm<sup>2</sup>) on glass and marble for each site. (b) Correlation between the mass of deposit on glass and marble.

⇒ The deposit on marble is generally slightly higher than on glass (Fig. 4b), which indicates a higher reactivity (with gases) and/or a higher roughness (to fix particles).

### CHARACTERIZATION OF DEPOSIT

#### Raman spectroscopy and SEM-EDS

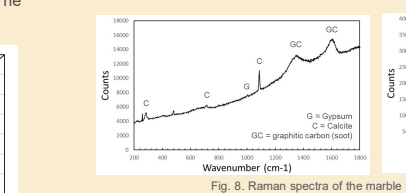


Fig. 8. Raman spectra of the marble from Split (Croatia)

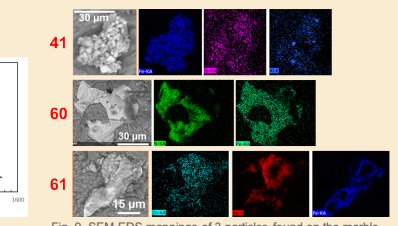


Fig. 9. SEM-EDS mappings of 3 particles found on the marble samples from Berlin 41, Split 60, Zagreb 61.

⇒ The majority of the particles analyzed using Raman is composed of graphitic carbon typical of soot particles (Fig. 8). Gypsum is detectable on some samples. Metallic and mineral particles can also be observed using SEM-EDS (Fig. 9).

### OPTICAL PROPERTIES AND COVERED SURFACE

The results of reflectance change are not relevant for the soiling measurement (Fig. 5) as the majority of the values indicates a gain of reflectance (due to a general lightning of the stone in contact with humidity), especially for limestone. However, particles are present on the surface (Fig. 6). The percentage of covered surface was calculated (Fig. 7).

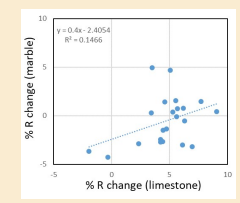


Fig. 5. Correlation between the percentage of reflectance change for limestone and for marble.

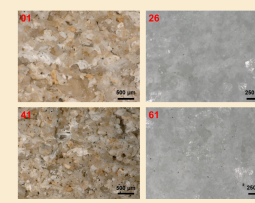


Fig. 6. Optical microscopy images of the surface of 2 limestone samples (Prague 01 and Berlin 41) and 2 marble samples (Stockholm 26 and Zagreb 61).

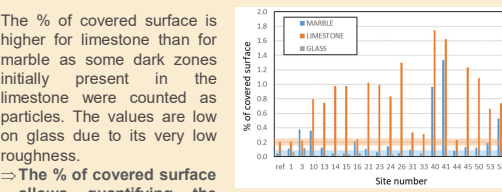


Fig. 7. % of covered surface for each site and for non-exposed references (bands).

The % of covered surface is higher for limestone than for marble as some dark zones initially present in the limestone were counted as particles. The values are low on glass due to its very low roughness.  
 ⇒ The % of covered surface allows quantifying the soiling of stones.

### Solution analyses using ICP-AES

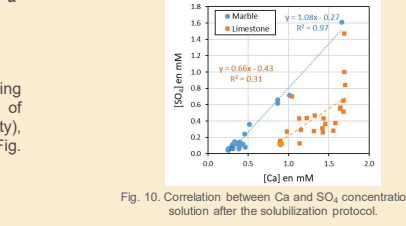


Fig. 10. Correlation between Ca and SO<sub>4</sub> concentration in solution after the solubilization protocol.

⇒ The very good correlation between [Ca] and [SO<sub>4</sub>] for marble highlights that the extraction dissolves mainly gypsum (Ca and S release) and only a few calcite ([Ca] = 0.25 mM) (Fig. 10). For limestone, both minerals are dissolved.

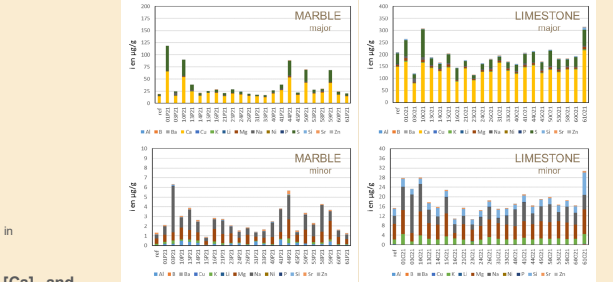


Fig. 11. Major and minor elements (in g/g of rock) on marble and limestone.

⇒ Elements can be released by the dissolution of minerals (correlation between Ca, Mg, K for marble / Ca, B, Sr, Ba, K, Li, Mg, Na, P, Sr for limestone) or by air pollution (Cu, Ni, Zn) (Fig. 11).

### CORRELATION WITH AIR POLLUTION

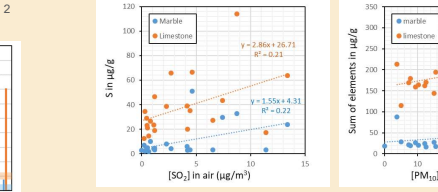


Fig. 12. Correlation between: (a) [SO<sub>2</sub>] in air and S in the deposit, (b) [PM<sub>10</sub>] in air and the sum of all elements analyzed using ICP-AES.

The quantity of S on the stones (coming from gypsum) is slightly correlated to SO<sub>2</sub> concentration in air (annual average), which highlights that black crust are formed in polluted zones (Fig. 12.a). On the same way, the sum of all elements detected in ICP-AES is slightly correlated to PM<sub>10</sub> concentration for limestone, but not for marble (Fig. 2.b).

⇒ The characterization of the deposit has to be pursued to improve the correlation of results with environmental data (not all available at this stage).

## CONCLUSION

- ✓ The percentage of the covered surface is the best parameter to assess the general soiling of stone materials.
- ✓ The deposit is mainly composed of soot, metallic and terrigenous particles. After 1 year, gypsum is already formed on the samples (Raman, ICP-AES).
- ✓ The study is in progress to complete the characterization of the deposit (Ion chromatography, C speciation) and to improve the link to air pollution.

**Bibliographic references**  
 [1] Camillo D., Dei Monte M., Sabbioni C. (1983) Origin and growth mechanisms of the sulfated crusts on urban limestone. *Water, Air and Soil Pollution* 19, 351-359.  
 [2] Sabbioni C., Zappia G. (1992) Atmospheric-derived element tracers on damaged stone. *Science of The Total Environment* 126, 35-48.  
 [3] La Russa M.F. et al. (2017) The Oceanus statue of the Fontana di Trevi (Rome) The analysis of black crust as a tool to investigate the urban air pollution and its impact on the stone degradation. *Science of The Total Environment* 593-594, 297-309.

**Acknowledgements** – The authors would like to thank all the partners involved in the ICP-Materials program and the Ile de France Region (DIM MAP) for its financial support.