



Flux rope, hyperbolic flux tube, and late extreme ultraviolet phases in a non-eruptive circular-ribbon flare

Sophie Masson, Etienne Pariat, Gherardo Valori, Na Deng, Chang Liu,
Haimin Wang, Hamish a S Reid

► To cite this version:

Sophie Masson, Etienne Pariat, Gherardo Valori, Na Deng, Chang Liu, et al.. Flux rope, hyperbolic flux tube, and late extreme ultraviolet phases in a non-eruptive circular-ribbon flare. *Astronomy and Astrophysics - A&A*, 2017, 604, pp.A76. 10.1051/0004-6361/201629654 . hal-02267758

HAL Id: hal-02267758

<https://hal.science/hal-02267758>

Submitted on 31 Oct 2020

HAL is a multi-disciplinary open access archive for the deposit and dissemination of scientific research documents, whether they are published or not. The documents may come from teaching and research institutions in France or abroad, or from public or private research centers.

L'archive ouverte pluridisciplinaire **HAL**, est destinée au dépôt et à la diffusion de documents scientifiques de niveau recherche, publiés ou non, émanant des établissements d'enseignement et de recherche français ou étrangers, des laboratoires publics ou privés.

Flux rope, hyperbolic flux tube, and late extreme ultraviolet phases in a non-eruptive circular-ribbon flare★

Sophie Masson¹, Étienne Pariat¹, Gherardo Valori², Na Deng^{3,4}, Chang Liu^{3,4}, Haimin Wang^{3,4}, and Hamish Reid⁵

¹ LESIA, Observatoire de Paris, PSL Research University, CNRS, Sorbonne Universités, UPMC Univ. Paris 06, Univ. Paris Diderot, Sorbonne Paris Cité, France

e-mail: sophie.masson@obspm.fr

² University College London, Mullard Space Science Laboratory, Holmbury St. Mary, Dorking, Surrey, RH5 6NT, UK

³ Space Weather Research Laboratory, New Jersey Institute of Technology University Heights, Newark, NJ 07102-1982, USA

⁴ Big Bear Solar Observatory, New Jersey Institute of Technology, 40386 North Shore Lane, Big Bear City, CA 92314-9672, USA

⁵ SUPA School of Physics and Astronomy, University of Glasgow, Glasgow, G12 8QQ, UK

Received 5 September 2016 / Accepted 27 March 2017

ABSTRACT

Context. The dynamics of ultraviolet (UV) emissions during solar flares provides constraints on the physical mechanisms involved in the trigger and the evolution of flares. In particular it provides some information on the location of the reconnection sites and the associated magnetic fluxes. In this respect, confined flares are far less understood than eruptive flares generating coronal mass ejections.

Aims. We present a detailed study of a confined circular flare dynamics associated with three UV late phases in order to understand more precisely which topological elements are present and how they constrain the dynamics of the flare.

Methods. We perform a non-linear force-free field extrapolation of the confined flare observed with the Helioseismic and Magnetic Imager (HMI) and Atmospheric Imaging Assembly (AIA) instruments on board Solar Dynamics Observatory (SDO). From the 3D magnetic field we compute the squashing factor and we analyse its distribution. Conjointly, we analyse the AIA extreme ultraviolet (EUV) light curves and images in order to identify the post-flare loops, and their temporal and thermal evolution. By combining the two analyses we are able to propose a detailed scenario that explains the dynamics of the flare.

Results. Our topological analysis shows that in addition to a null-point topology with the fan separatrix, the spine lines and its surrounding quasi-separatrix layer (QSL) halo (typical for a circular flare), a flux rope and its hyperbolic flux tube (HFT) are enclosed below the null. By comparing the magnetic field topology and the EUV post-flare loops we obtain an almost perfect match between the footpoints of the separatrices and the EUV 1600 Å ribbons and between the HFT field line footpoints and bright spots observed inside the circular ribbons. We show, for the first time in a confined flare, that magnetic reconnection occurred initially at the HFT below the flux rope. Reconnection at the null point between the flux rope and the overlying field is only initiated in a second phase. In addition, we showed that the EUV late phase observed after the main flare episode is caused by the cooling loops of different length which have all reconnected at the null point during the impulsive phase.

Conclusions. Our analysis shows in one example that flux ropes are present in null-point topology not only for eruptive and jet events, but also for confined flares. This allows us to conjecture on the analogies between conditions that govern the generation of jets, confined flares or eruptive flares.

Key words. Sun: magnetic fields – Sun: flares – Sun: UV radiation – magnetic reconnection

1. Introduction

Circular-ribbon flares have received an enhanced interest over the last ten years (Ugarte-Urra et al. 2007; Masson et al. 2009; Reid et al. 2012; Wang & Liu 2012; Dai et al. 2013; Deng et al. 2013; Jiang et al. 2013, 2014, 2015; Liu et al. 2013, 2015; Sun et al. 2013; Vemareddy & Wiegmann 2014; Wang et al. 2014; Joshi et al. 2015; Kumar et al. 2015; Yang et al. 2015; Janvier et al. 2016). They belong to a subclass of flares for which one of the ribbon has an almost fully closed quasi-circular or quasi-ellipsoidal shape. The magnetic field distribution of active regions where circular-ribbon flares are observed consists, in the simplest case, of a parasitic polarity embedded in an opposite sign polarity of a larger dipolar active region. This circular ribbon is usually located slightly outside – closely

surrounding – the parasitic polarity. However, some circular-ribbon flare regions can present a more complex distribution (Vemareddy & Wiegmann 2014; Joshi et al. 2015). In addition to the ellipsoidal ribbon, circular-ribbon flares are often associated with two other elongated ribbons. The inner ribbon is located within the circular ribbon in the parasitic polarity, while the outer elongated ribbon is located outside the circular ribbon in the external polarity region, often at a relatively remote location.

Topological studies allow us to analyse the properties of the magnetic field and their relation with the flare ribbon geometry and dynamics (e.g. Gorbachev & Somov 1988; Mandrini et al. 1991, 1995, 1997; Démoulin et al. 1994b, 1997; Savcheva et al. 2012a, 2015, 2016). Circular-ribbon flares are tightly linked with the topological structure of a 3D null point (Masson et al. 2009). A null point defines a dome-like separatrix surface, the fan, and

★ A movie is available at <http://www.aanda.org>

two singular field lines, the spines, originating from the null point, each of which belongs to one of the semi-spaces bounded by the fan surface (cf. Longcope 2005, Pariat et al. 2009). In a C-class circular-ribbon flare, Masson et al. (2009) showed that the circular ribbon corresponds to the footpoints of the fan separatrix surface, whereas the inner and outer ribbons respectively correspond to the spine footpoint within and outside the closed fan surface. Masson et al. (2009) also highlighted that the elongated shape of the inner and outer ribbons is caused by reconnection across the quasi-separatrix layer (QSL) which surrounds the null-point separatrices. This structure is referred to as a QSL-halo around the separatrices (Masson et al. 2009; Pontin et al. 2016). Pontin et al. (2013) and Pontin et al. (2016) showed that for null-point topology, magnetic reconnection in the null-point QSL-halo occurs in the current sheet surrounding the null point. In this sense, both null-point and QSL-halo reconnection are the same. However, null-point and QSL-halo reconnection lead to a different change of connectivity which may be significant in order to interpret observational signatures and the dynamics of the flare. In terms of connectivity changes, null-point reconnection leads to a jump of the field line connectivity, between the inner and the outer fan connectivity domain, while QSL-halo reconnection implies continuous changes within the same connectivity domain.

Solar flares are divided into two classes: eruptive events and non-eruptive/compact or confined events. During an eruptive flare, a magnetic structure is ejected and is later observed as a coronal mass ejection (CME) in white-light coronagraph images. On the contrary, non-eruptive (or compact) flares do not generate any CMEs¹. Eruptive flares are associated with a magnetic flux rope formed either before or during the flare. This magnetic structure plays a central role in the ejection dynamics and in the torus instability trigger scenario (Török & Kliem 2007). Searching for the existence of magnetic flux rope before the onset of eruptive flares is therefore one of the main drivers of studies investigating the solar eruption trigger mechanisms. Several circular-ribbon flares present an eruptive nature associated with a flux rope (Dai et al. 2013; Sun et al. 2013; Jiang et al. 2014; Liu et al. 2015; Yang et al. 2015; Janvier et al. 2016). In addition to the flux rope, those circular-ribbon eruptive flares have a null-point topology which is essential for the breakout trigger scenario (Antiochos et al. 1999). Therefore, eruptive circular-ribbon flares are particularly interesting since multiple topological structures involved in different eruption scenarios are present.

Do non-eruptive/compact circular-ribbon flares present twisted flux ropes enclosed below the fan surface? To this day no study has ever thoroughly investigated the magnetic topology of compact circular-ribbon flares. Therefore, compact flares are generally not considered as being related to magnetic reconnection involving sheared or twisted flux tubes.

A subclass of circular-ribbon flares is associated with jets (Wang & Liu 2012; Liu et al. 2013). Solar jets are defined as a collimated and mainly radially propagating plasma which is observed either in emission or in absorption. Most of the jet models agree that they originate in 3D null-point topology (see review by Raouafi et al. 2016). It is more and more widely accepted that jets are triggered by magnetic reconnection between a flux rope, initially confined below the fan, and the outer-fan magnetic field (e.g. Pariat et al. 2015; Raouafi et al. 2016). Jets are indeed observed to be associated with micro-sigmoids (Raouafi et al. 2010) and erupting filaments (Sterling et al. 2015) suggesting the presence of a flux rope structure. Since flux ropes are found

in 3D null-point topology associated with non-eruptive flares accompanied by jets and circular-ribbon eruptive flares, we can expect to find them at all scales in systems with a 3D null point and thus in compact jet-less circular-ribbon flares. The existence of flux ropes below a 3D null-point dome would be particularly important for the reconnection dynamics in the system.

Another signature of the complex dynamics of the reconnection in null-point systems is the observed brightening propagation along the forming circular ribbon (Masson et al. 2009; Reid et al. 2012; Wang & Liu 2012; Sun et al. 2013; Jiang et al. 2015). From the data-initiated and data-inspired driven 3D MHD simulation, Masson et al. (2009) demonstrated that this propagation is very likely due to the slipping reconnection in the QSL-halo surrounding the null separatrices. Sun et al. (2013) observed this slippage by carefully looking at the dynamics of hot post-flare loops around the spine during a circular-ribbon flare. These bright loops are observed when the plasma density increases in the reconnected flux tubes. The density increase may be caused by the evaporation of chromospheric material along the flux tube (e.g. Del Zanna 2008) or rarefaction waves (Bradshaw et al. 2011). Therefore, the spatial evolution of the post-flare loops can be used as an indicator of the evolution of the reconnected flux (Aulanier et al. 2007; Masson et al. 2014; Malanushenko et al. 2014; Dudík et al. 2014).

It is common to observe apparent slipping of post-flare loops; it is attributed to 3D magnetic reconnection of neighbouring field lines belonging to quasi-separatrix layers (Priest & Démoulin 1995; Aulanier et al. 2006). Studies of magnetic reconnection at and around 3D singular null points is an active field of theoretical and numerical investigation aimed at understanding the transfer of the magnetic flux (Pariat et al. 2009, 2015; Al-Hachami & Pontin 2010; Masson et al. 2012; Fuentes-Fernández & Parnell 2012, 2013; Pontin et al. 2013, 2016; Wyper & Pontin 2014a,b; Wyper & DeVore 2016). In the case of eruptive flares, numerical simulations of the eruption of a flux rope under a null (Lugaz et al. 2011; Jiang et al. 2013) show a complex evolution of the connectivity as the flux rope reconnects/interacts at the null. Combined observations of the ribbon dynamics and the flare-loop evolution in circular-ribbon flares are essential in order to provide constraints for these theoretical works.

Finally, flares involving a null point are particularly prone to extreme ultraviolet (EUV) emissions in late phases (Dai et al. 2013; Sun et al. 2013; Liu et al. 2013; Li et al. 2014). Extreme ultraviolet late phases were first noticed by Woods et al. (2011) and correspond to the existence of at least one distinct flux peak in the EUV irradiance time-profile after the impulsive phase of some flares, with no correspondence in X-ray (see also Hock et al. 2012; Liu et al. 2015). Several explanations have been put forward to explain these late phases: additional heating in the late-phase loop (Woods et al. 2011; Hock et al. 2012; Dai et al. 2013; Liu et al. 2015), the differential cooling of post-flare loops of different lengths (Liu et al. 2013; Li et al. 2014), or a combination of the two (Sun et al. 2013). The multi-wavelength analysis of new flaring regions presenting EUV late phase is therefore crucial to completing our understanding of the plasma thermodynamics during the gradual phase of flares.

Compact circular-ribbon flares are particularly interesting flares to study for their magnetic structures, the 3D properties of magnetic reconnection, and the plasma response to it. In the present study, we build on the observed event studied by Deng et al. (2013). They analysed unprecedented high-resolution and high-cadence H α imaging observations of a C4.1 circular-ribbon flare; they showed the detail of the outer ribbon

¹ Flare inducing jets are considered non-eruptive flares.

dynamics and confirmed its formation mechanism resulting from electron beam heating. We undertake here a complementary study of this event by performing a detailed examination of the magnetic topology of this flaring region with respect to the EUV emission both during the impulsive and the gradual phases.

We first present the EUV solar ribbons and the EUV light curves evolution of the flare in which we identify a main phase and three EUV late phases (Sect. 2). We compute a non-linear force-free field (NLFFF) extrapolation and analyse the magnetic topology (Sect. 3). In Sects. 4 and 5 we combine the topological analyses and the temporal and spatial evolution of the bright post-flare loops to interpret the dynamics of the compact flare, from the pre- to the post-flare phase. We summarize and discuss our results in Sect. 6.

2. Confined flare on October 22, 2011

2.1. UV ribbons

On October 22, 2011, the compact flare SOL2011-10-22-1521 was observed in AR 11324 between 15:00 UT and 18:00 UT with the Atmospheric Imaging Assembly (AIA, Lemen et al. 2012) on board Solar Dynamics Observatory (SDO, Pesnell et al. 2012). No CME is observed. The high temporal cadence (12 s) and the high spatial resolution (1.2'') of the AIA images allow us to study in detail the evolution of the flare.

Figure 1 shows the temporal evolution of the flare at 1600 Å. We identify a quasi-circular ribbon which encloses one inner ribbon and several bright spots; a remote ribbon is located westward of the circular ribbon (see labels in Fig. 1, left column) at about 35 Mm from the fan. This ribbon morphology corresponds to a null-point flare (Masson et al. 2009; Reid et al. 2012; Wang & Liu 2012; Dai et al. 2013; Liu et al. 2013; Deng et al. 2013; Sun et al. 2013). Similarly to previous studies, we expect that the quasi-circular ribbon traces the location of the fan separatrix footpoints and its QSL-halo, that the inner and outer ribbons are respectively located at the inner and the outer spine singular field line footpoints, and that the extension of the inner and outer ribbons is caused by the QSL-halo around the spines.

The main phase of the flare occurs between 15:13 UT and 15:28 UT, when we observe the brightening of the three ribbons (Fig. 1c and left panel in the online material). At 15:13 UT, fragments of the circular ribbon brighten simultaneously and two bright kernels appear inside and westward of the circular ribbon (see labels in Fig. 1). The simultaneous appearance of the inner and remote bright kernels suggests the anchoring of the inner and outer spines (and is confirmed by our topological analysis in Sect. 3), and indicates that field lines enclosed below the fan have reconnected at the null point with the outer magnetic flux, i.e. the null-point reconnection has started. At 15:14 UT, bright segments of the quasi-circular ribbon become more intense, starting in the north-east part. Then brightenings extend following the circular shape in the anticlockwise direction, and finally the western part of the quasi-circular ribbon gets brighter as well. Even though most of the quasi-circular ribbon brightens, we identify three main segments along it that are brighter than the rest: R1 on the north-east segment, R2 on the east, and R3 lying along the western part (see labels in Fig. 1d). Meanwhile, the inner and the remote bright kernels become brighter and extend to form two elongated ribbons. After 15:16 UT, the remote ribbon's shape changes and a "tail" develops westward of the initial elongated ribbon. At 15:21 UT, when the flare reaches its maximum intensity, the remote ribbon has an inverse-Z shape (for details, see Deng et al. 2013).

The spatial and temporal evolution of the ribbons are fully consistent with the standard null-point/slipping reconnection model (Masson et al. 2009). However, before the main null-point episode, bright spots are observed at 1600 Å inside the quasi-circular ribbon. These brightenings are first observed at 15:07 UT (Fig. 1a) and remain the only visible brightenings until the onset of the null-point reconnection at 15:13 UT (Fig. 1b). Those internal bright spots do not, a priori, result from null-point reconnection even though they are located inside the quasi-circular ribbon. They are not predicted by the standard null-point/slipping reconnection model. What is the origin of these bright spots appearing inside the fan prior to any null-point related ribbon? Do they play a role in triggering the null-point flare?

2.2. EUV light curves

Using the AIA capacity, we determine the multi-wavelength evolution of the flare. Figure 2 shows the light curves of the flaring region ($x = [-450, -250]''$, $y = [0, 200]''$) for four EUV coronal AIA channels and the soft X-ray light curve (6–12 keV) observed by RHESSI (Lin et al. 2002). According to the response function of AIA, the observed lines can be divided in three groups : cold, warm, and hot (see Reale 2010, their Table 2). The 335 Å is a hot channel with a temperature response function peaking at $T = 10^{6.4}$ K. The 131 Å line has two hot components at $T = 10^{7.0}$ K and $T = 10^{7.2}$ K and a cold component at $T = 10^{5.6}$ K. The 211 Å lines correspond to a warm emission and its temperature response function peaks at $T = 10^{6.2}$ K. The 171 Å channel corresponds to a cold plasma at $T = 10^{5.8}$ K. Except for the 335 Å line, which has a smooth and long duration time profile from 15:07 UT to 18:00 UT, the other time profiles are structured by several well-pronounced peaks.

We identify four major episodes between the 15:07 UT and 18:00 UT, defined by the presence of peaks of luminosity in at least two channels (see labels in Fig. 2). During the main episode (15:07–15:24 UT), all the channels rise and most of them reach their maximum at 15:18 UT, except 335 Å which shows a local maximum at 15:18 UT, but reaches its absolute maximum later. During this main episode, we observe a peak in the soft X-ray emission (6–12 keV). This first episode is temporally consistent with the null-point reconnection episode identified at 1600 Å (see Sect. 2.1).

After the main episode, three sharp peaks are observed in the warm (211 Å) and cold lines (171 Å) and are accompanied by a local maximum in the hottest line (335 Å). These peaks appear around 15:34 UT, 15:54 UT, and between 16:39 UT and 16:50 UT, respectively about 16, 36, and 81 min after the first peak. In each of these episodes, we observe the same sequential evolution of the peaking time as a function of the line temperature. The local maxima of the first EUV late phase peak as a function of the plasma temperature: the 211 Å emission at 15:34 UT, the 193 Å emission at 15:35 UT (not shown here), and the 171 Å emission at 15:36 UT. For the second EUV late phase, the light curve at 211 Å locally peaks at 15:54 UT, the 193 Å emission at 15:55 UT (not shown here), and the 171 Å emission peaks at 15:56 UT (see Fig. 2). The time delay for the third EUV late phase is much more important. Indeed the emission at 211 Å peaks locally at 16:39 UT, the 193 Å emission at 15:43 UT (not shown here), and the emission at 171 Å peaks at 16:50 UT. The first post-flare EUV episode (\approx 15:34 UT) is associated with chromospheric brightenings in the vicinity

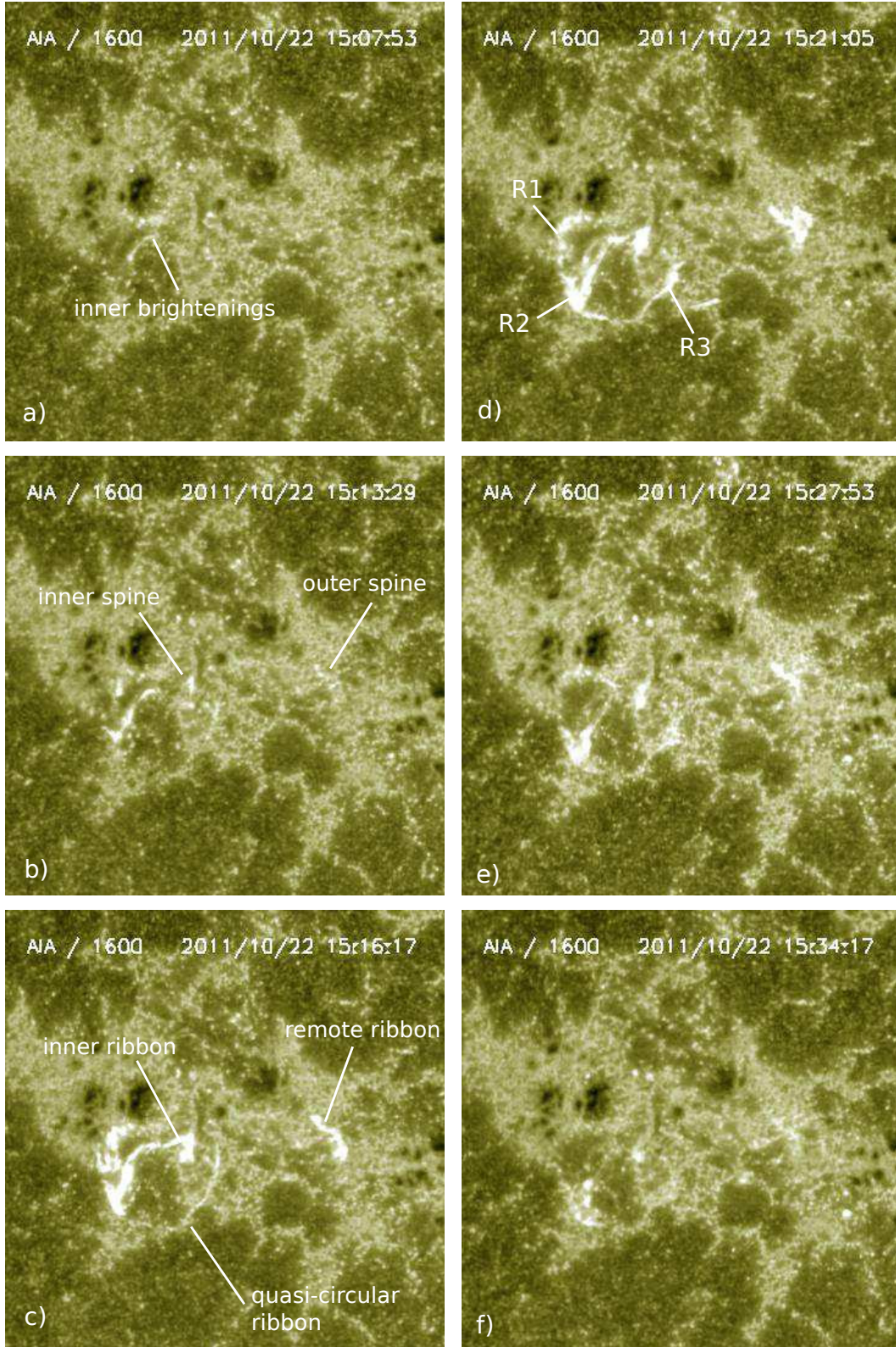


Fig. 1. Time sequence of AIA images at 1600 Å observed in AR 11324 during the flare on October 22, 2011. The field of view is $x \approx [-450, -250]''$ and $y \approx [0, 200]''$. *Panel a* shows brightenings observed prior to the null-point reconnection. In *panels b* and *c* are identified the three main ribbons related to null-point reconnection: quasi-circular, inner, and outer ribbons associated with the fan, and the inner and outer spine separatrix footpoints. In *panel d* R1, R2, and R3 denote the three brightest segments along the quasi-circular ribbon. *Panels e* and *f* show the decaying phase of the flare. The full temporal evolution is available in an [online movie](#) (which has not been corrected for solar rotation) that also shows the AIA sequence in the 131 Å and 171 Å channels.

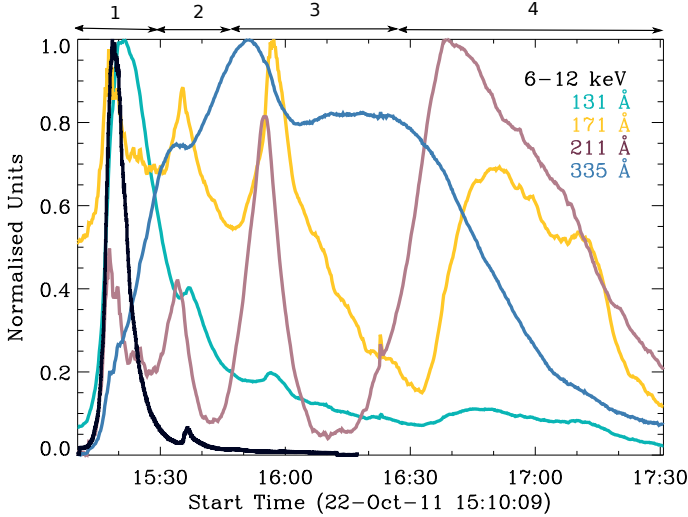


Fig. 2. Multi-wavelength light curves of 4 AIA EUV lines and the X-ray light curve at 6–12 keV from RHESSI computed in a box located at longitude $x = [-450, -250]''$, and latitude $y = [0, 200]''$. Their time profiles are structured by a main flare episode between 15:10 UT and 15:28 UT, and three late episodes peaking respectively around 15:34 UT, 15:54 UT, and between 16:39 UT and 16:50 UT.

of the inner and remote ribbon and along the eastern part of the quasi-circular ribbon (R2). The second ($\approx 15:54$ UT) and third EUV peaks (from 16:39 UT to 16:50 UT) are not associated with any well-defined chromospheric brightenings, but some sparkling spots can be seen until 15:53 UT (see left panel in the online animation).

The EUV late phase was first identified by Woods et al. (2011) and was defined by four criteria. Since then, several other studies have addressed the origin of late EUV phases (Liu et al. 2013; Sun et al. 2013; Dai et al. 2013) and the initial definition has been adjusted. According to those studies, the minimalist definition for a late EUV phase can be warm (211 Å, 193 Å) and cold (171 Å) EUV emission peaking several minutes to hours after the main flare phase, with no soft X-ray counterpart, but associated with distinct emitting EUV loops.

For the present flare, the AIA 335 Å emission rises slower and later than other channels. It reaches a local maximum 2–4 min before each of the three peaks, and its temporal structure corresponds to the EUV late phase described above. While it is common to use the Extreme Ultraviolet Variability Experiment (EVE) FeXVI 335 line to identify a late EUV phase, our event is not strong enough at the flaring time to create a clear emission peak in the whole Sun EVE irradiance. However, all previous events showed that the late EUV phase is equally observed with EVE and AIA (Woods et al. 2011; Dai et al. 2013; Sun et al. 2013). For the present flare, no significant enhancements of RHESSI soft X-ray and hot emission are detected (Fig. 2); however, the flare class and the X-ray flux are much lower than in previously reported late EUV phase flares. The additional X-ray flux of this region may be covered by the overall flux of the Sun.

3. Magnetic model of the circular flare

So far, identifying the topological elements involved during solar flares, eruptive or not, has been a successful way to understand the origin and the evolution of the solar eruption. As we increase the complexity of the extrapolation model of the magnetic field,

we obtain more details on the flare. In the following, we analyse the magnetic topology of the flare in order to identify the magnetic topological elements and determine their role in the flare dynamics.

3.1. Non-linear force-free extrapolation

The Helioseismic and Magnetic Imager (HMI, Scherrer et al. 2012) provides a highly resolved magnetogram (time cadence of 45 s and spatial resolution of $1''$). However, the vector magnetogram requires a longer integration time: the cadence is 12 min and the CCD pixel size is $0.5''$. The active region consists of an east–west oriented bi-polar configuration with a negative parasitic polarity embedded in the eastern positive polarity (left panel, Fig. 3).

The vector magnetogram at 15:00 UT corresponding to AR11324 is included in the patch 976 of the HARP catalogue². The standard data product of the HARP pipeline as of 25 January 2013 was used. This includes the removal of the ambiguity in the direction of the transverse field, as well as cylindrical equal area (CEA) projection remapping (see Hoeksema et al. 2014, for more details). The area of interest was extracted from the HARP patch data, the resolution was halved using a flux-conserving coarsening, and a median smoothing with 7-pixel boxcar was applied to all three field components. Since the magneto-frictional relaxation equations are parabolic in nature, the lower resolution allowed us to obtain a deeper relaxation level in an acceptable running time. The median-smoothing was applied in order to eliminate some of the salt-and-pepper fluctuations, present especially in the area of low field/low signal-to-noise ratio.

Vector magnetograms are estimations of the magnetic field inferred from the inversion of spectropolarimetric profiles that are remotely measured. The origin of the emission for the SDO/HMI spectropolarimeter is photospheric, i.e. coming from a region of high- β plasma (Lites 2000). Therefore, in order to use vector magnetograms as boundary conditions of NLFFF extrapolation codes, it is advantageous to modify the observations in such a way that Lorentz forces in the magnetogram are reduced (i.e. preprocessing; e.g. Schrijver et al. 2008). We employ the technique of Fuhrmann et al. (2007), which allows us to fix a limit to the modification of each component separately. In particular, the preprocessing is applied to the horizontal components only, with a maximum allowed variation of the measured horizontal components corresponding in each pixel to the larger between 100 G and 50% of the local value. These maximal ranges of variation result in an average modification of 52 G (respectively, 61 G) in the B_x (respectively, B_y) component, and in a decrease of Lorentz forces on the magnetogram from 0.07 before preprocessing to 10^{-3} after preprocessing, according to the definition used in Metcalf et al. (2008).

The preprocessed vector magnetogram is then extrapolated to build the coronal field model using the implementation of the magneto-frictional method described in Valori et al. (2010) with open lateral and top boundaries and on three levels of successive grid refinement. The resulting numerical model has relatively high localized forces, possibly because the system is close to the dynamical phase at the time of the observation. The field then is less force-free in volumes directly connected to non-force-free areas of the magnetogram. The resulting force-freeness level, as defined by Wheatland et al. (2000), is $\sigma_J \equiv \int |J_\perp| dV / \int |J| dV = 0.44$.

² http://jsoc.stanford.edu/doc/data/hmi/harp/harp_definitive/2011/10/22/harp.2011.10.22_15:00:00_TAI.png

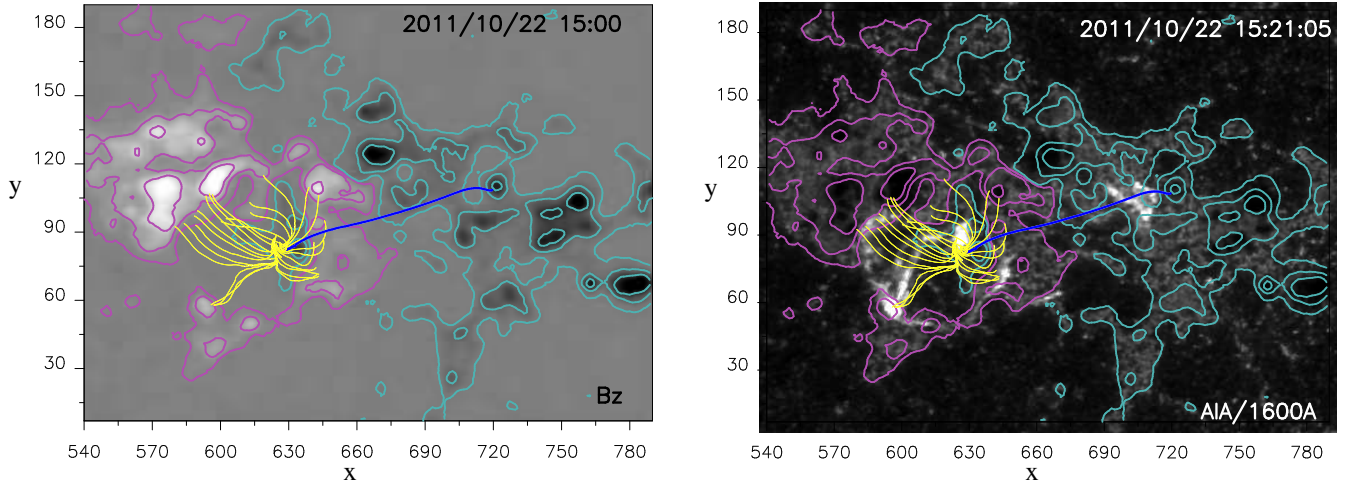


Fig. 3. Null-point topology resulting from the NLFF extrapolation. *Left panel:* grey shading indicates the line-of-sight magnetic field. Pink and blue iso-contours correspond to positive and negative $B_{los} = \pm 40, 250, 750$ G, respectively. Blue and yellow field lines indicate respectively the spine and the fan separatrix. *Right panel:* co-spatiality between the chromospheric solar ribbons observed at 1600 \AA and the location of the separatrix footpoints. The x - and y -axis units are in arcseconds defined by the CEA projection.

One of the consequences of the boundary condition not being perfectly compatible with the force-free assumption is that the resulting extrapolated field presents local violations of the solenoidal property of the field. Such violations can be quantified as a fraction of the total energy, in this case equal to $E_{ns}/E = 0.07$ according to the notation of Valori et al. (2013). The presence of a finite field divergence is potentially a source of mismatch between field lines and observations; however, as the detailed comparison with observations below shows, its distribution in the volume appears to largely average away.

3.2. Null-point topology

In this extrapolated field, using the method of Démoulin et al. (1994a) we find a 3D null point located around $(x, y) = (632, 84)''$ and $z = 11$ Mm. The null point divides the coronal volume in two connectivity domains, the inner and the outer connectivity domain, separated by the fan surface including the null. In each domain a spine is present, which we refer to as the inner (resp. outer) spine for the one confined below (resp. emerging away from) the fan surface. In Fig. 3, we plot separatrix field lines emanating from the null point. The yellow field lines materialize the dome-like fan separatrix, while the dark blue line shows the outer spine that intersects the fan surface at the null point. The part of the spine rooted in the parasitic polarity, the inner spine, is observed in Fig. 4, bottom row.

The magnetic field extrapolation is performed in a local reference frame. In order to compare the EUV observations with the extrapolated magnetic field, we treat the AIA data in the same way as the magnetic field data used as input of the extrapolation routine, i.e. using cylindrical equal-area projection (CEA). Some of the images are thus presented as if the observer is at the zenith of the centre of the selected region. Because of this CEA projection, 3D structures in the volume (e.g. loops) are slightly distorted compared to the magnetic field lines. However, the morphology of the structures at the low atmosphere level are preserved. Working with a CEA projection and re-projecting the magnetic field model on the plane of sky leads to minimum differences. Since we mainly focus on the comparison between low atmosphere features with the magnetic field, we obtain a better co-alignment with the CEA projected data. Therefore, AIA

images are treated in the same way as HMI magnetograms. The small difference of pointing and distortion between the HMI data and the AIA data are compensated for by using small variations in the orientation and pixel size in order to obtain the best visual fit between iso-contours of the longitudinal magnetic field and the plage observed at 1600 \AA . The overall final precision of the co-alignment is of the order of $1\text{--}2''$.

By overplotting the separatrix field lines on the chromospheric ribbons (Fig. 3, right panel), we find that the fan footpoints match the location of the quasi-circular ribbon perfectly (within the co-alignment precision). However, the outer spine footpoint anchors ≈ 5 Mm westward of the remote ribbon's western extremity. Moreover, the remote ribbon brightens first at the bottom of the inverse-Z shape (Deng et al. 2013). Considering that the remote ribbon first appears when null-point reconnection starts, the outer spine should initially be anchored at the bottom segment of the remote ribbon and not the upper part as given by the extrapolation. In this case, the extrapolated spine is anchored less than ≈ 14 Mm west of the expected spine position. Despite this discrepancy, our NLFFF extrapolation leads to an unequalled overlap between the flare ribbons and the separatrix footpoints compared to previous studies.

In the NLFFF extrapolation by Vemareddy & Wiegmann (2014), the footpoint of the spine related post-flare loops and the outer flare ribbon are located more than 35 Mm from the position of the outer spine footpoint. Yang et al. (2015, Fig. 5) showed that the outer spine is about $25''$ east of the brightest portion of the outer ribbon. The footpoints of the spine QSL-halo extend strongly westward and the shape presents similarities with the elongated outer ribbon. Its position is further south of the actual observed ribbon (see Fig. 6 of Yang et al. 2015). A fraction of the field lines forming this outer spine QSL-halo are anchored in the outer region between $10''$ and $20''$ southward of the outer ribbon. No studies have yet been able to obtain a complete match between all the 3D null-point topological structures and the different flare ribbons. The correspondence of such details of the coronal field models with the flare brightening reveal the accuracy in reproducing the correct current distribution as well as the large-scale magnetic field configuration.

The excellent match between the magnetic model and the UV observed features compared to previous studies can be

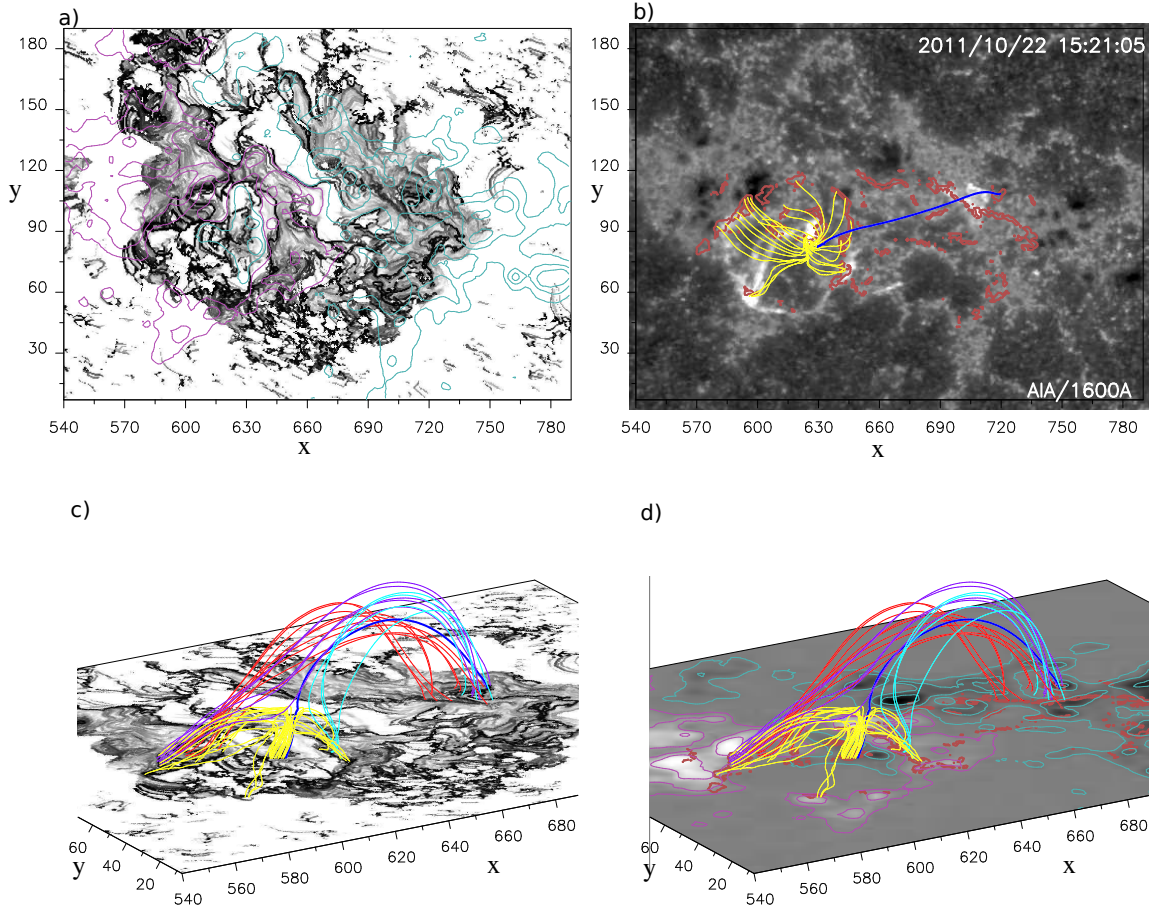


Fig. 4. QSL distribution in the domain. *Panel a:* top view of the Q -factor distribution at $z = 0$ between $\text{Min}(\log Q) = 1$ in white and $\text{Max}(\log Q) = 8$ (black) with pink and blue iso-contours of the vertical magnetic field (see Fig. 3). *Panel b:* top view of the AIA 1600 Å chromospheric ribbons co-aligned with red Q iso-contours such as $\log Q = 6.5$, and the fan and spine separatrix field lines. *Panels c and d:* 3D view of the same Q -map grey-scaled and the vertical magnetic field, respectively, with the fan and spine separatrices and the QSL-halo connectivities. The dark blue and yellow field lines shows respectively the spine and fan separatrix field lines; the red and purple lines belong to the outer spine QSL-halo and connect respectively the north and the east of the fan (see text for details). The x - and y -axis units are in arcseconds defined by the CEA projection.

explained by several factors. First, the AR is close to central meridian at the time selected for the NLFFF modelling. Therefore, the vertical component of the field is quite close to the measured line-of-sight component, and limiting the preprocessing to the transverse component only prevents heavy modifications of the vertical component which is better measured. In addition, the relatively limited preprocessing that we perform, even though it induces some residual forces, avoids large modifications of the distribution of injected currents at the photosphere. Furthermore, the present AR is modelled only a few minutes before a flare event occurs. The real magnetic field within the active region is thus likely not fully force-free at the time of our study. Our magneto-frictional approach, while trying to reach a force-free state, does not strictly impose it. The finite force-freeness present in the system may actually enable more realistic modelling of the close-to-flaring active region. In combination with the efficiency of the magneto-frictional scheme in properly injecting current, regardless of the topological complexity of the field (see Valori et al. 2012), the careful preprocessing allows a reconstruction of the coronal field that is accurate on different scales simultaneously. In particular, the match between the reconstructed spine position (and associated QSL-halo) and the magnetic model-independent observations of the remote kernel brightening provides a crucial confirmation of the accuracy of our magnetic model.

By comparison with a potential field extrapolation that we performed (not shown here), the outer spine in the potential field extrapolation connects to the photosphere at a point that is closer to the fan (around $[x, y] = [700, 90]''$ for the potential model vs. $[x, y] = [720, 105]''$ for the NLFFF model, as shown in the left panel of Fig. 3) and has an associated QSL structure which extends in the south-east direction, which does not match the observation. The injection of currents allowed by the NLFFF model, although it does not introduce currents at the null itself due to its force-free hypothesis, is nevertheless able to change the local and global field to have an improved match of the outer spine with the remote brightening kernel. In addition, further observational matches discussed below, which are related to the flux rope underneath the fan, are essential non-linear features which are obviously absent from the potential field model.

3.3. Quasi-separatrix layers

Solar ribbons are also observed at QSL footpoints (e.g. Démoulin et al. 1996; Mandrini et al. 1996; Savcheva et al. 2012a). The regular “cut-and-paste” reconnection regime transfers flux from one connectivity domain to another and leads to ribbon motions perpendicular to the polarity inversion line (PIL; Bogachev et al. 2005; Aulanier et al. 2012). Reconnection across QSLs leads to the flipping/slipping motions of field lines

(Hesse & Schindler 1988; Priest & Forbes 1992) and causes brightening propagation parallel to the PIL (e.g. Janvier et al. 2013, 2016). The critical role of the QSL reconnection in understanding the dynamics of solar flares has been widely demonstrated by observational (Aulanier et al. 2007; Dudík et al. 2014; Masson et al. 2014) and numerical studies (Aulanier et al. 2006; Masson et al. 2009; Janvier et al. 2013; Savcheva et al. 2016).

The QSL distribution can be quantified by the so-called squashing factor Q (Titov et al. 2002; Titov 2007). It computes the connectivity gradients between one field line and its neighbouring field lines. We use method 3 of Pariat & Démoulin (2012) to compute the squashing-factor in the full 3D volume. This method is then applied to the extrapolation described in Sect. 3.1 to compute the squashing factor Q . Figure 4a shows a top view of the photospheric trace ($z = 0$) of the Q distribution in the region. In addition to the high- Q region shown by the black lines, we note a complex Q distribution. It is a consequence of the non-linear nature of the extrapolation method; first, it maintains enough complexity of the observed photospheric field and second, it de facto considers a non-force-free equilibrium for the field.

In Fig. 4b red iso-contours of high- Q ($\log Q = 6.5$) are over-plotted on a 1600 Å image. Compared to Fig. 4a, the Q values are also filtered in order to plot only regions where $|B| > 50$ G and thus remove the multiple high- Q regions related to weak small-scale or noise-level magnetic-field measurement. This magnetic field filtering allows us to select the QSLs which are more likely to be associated with the actual flare ribbons. Indeed, the low-lying QSL are unlikely to store a large amount of current and to be activated during the flare. Moreover, particle acceleration and ribbon formation are likely to be more important in more intense field regions. We indeed observe that the plotted high- Q structures are located at the footpoints of the fan surface/circular ribbon (footpoints of the yellow lines), at the inner spine/ribbon (around $x = 630''$ and $y = 90''$), and in the bottom section of the outer spine/ribbon (around $x = 705''$ and $y = 110''$). This confirms the results of Masson et al. (2009) and Pontin et al. (2016) that a QSL-halo surrounds the fan/spine separatrix. Moreover, we note that the magnetic filtering applied to plot the QSL along the fan shows that these high- Q regions are co-spatial with the most intense ribbons, R1 ($[x, y] = [585, 95]''$), R2 ($[x, y] = [595, 60]''$), and R3 ($[x, y] = [640, 75]''$) in Fig. 4b.

Unlike previous circular flares with elongated and linear inner and remote ribbons, here they are rather compact. However, the outer spine QSL-halo is actually quite extended, with a length of about 120 Mm (for $\log Q = 6.5$), with extremities at $[x, y] = [670, 120]''$ and at $[x, y] = [705, 50]''$ (see Fig. 4b). The outer ribbon observed at 1600 Å corresponds to a small fraction of that extended outer spine QSL-halo. In the image at 131 Å, this very extended QSL corresponds to brightenings observed prior to the studied flare (not shown here). The 1600 Å outer ribbon is however located close to the regions having the highest Q value of that extended outer spine QSL-halo (Fig. 4b). Furthermore the remote ribbon has an inverse-Z shape (cf. Deng et al. 2013, who extensively discuss the shape and dynamics of the outer ribbon). This inverse-Z shape is also observed in the QSL distribution around $[x, y] = [705, 105]''$ (Fig. 4a), precisely at the location of the observed outer ribbons. This hints that the shape of the flare ribbons are morphologically controlled by the QSLs as discussed in Masson et al. (2009). Conversely, this is an additional confirmation of the quality of the extrapolation since the location of the outer ribbon is reproduced and the entire QSL-halo surrounding is also correctly represented.

In order to determine the QSL connectivity in the flare domain, we plot field lines from footpoints anchored in region of high Q . In Figs. 4c and 4d we show three groups of field lines that connect the outer ribbon and the quasi-circular ribbon. Those group of field lines materialize the QSL-halo surrounding the fan and spine separatrices. The north-eastern part of the circular ribbon (R1, Fig. 1) is connected to the upper part of the inverse-Z ribbon by the purple field lines and to the bottom part of the remote ribbon by the red field lines. The outer spine is also connected to the south-western part of the fan (R3) by the light blue field lines. Studying the QSL connectivity allows us to identify in detail the section of the QSLs associated with the UV ribbons observed at 1600 Å.

3.4. Flux rope under the fan

Enclosed in the fan surface, we identify small-scale structures of high- Q (Figs. 4a and c). Figures 5a and b present a zoom of the fan region respectively in a top and 3D view. By plotting field lines from these high- Q regions we found a twisted flux rope (green field lines). This structure is clearly helical and the number of turns is of the order of unity. This flux rope connects the northern part of the circular ribbon R1 ($[x, y] \sim [595, 105]''$) and QSL-halo of the inner spine ($[x, y] \sim [630, 90]''$), i.e. the inner ribbon. The footpoints of the flux rope correspond to two regions of high EUV emission which indicates a preeminent role in the dynamics of the flare. While flux ropes have commonly been observed confined below null-point dome in extrapolation of major eruptive flares (see Sect. 1), Wang et al. (2015) and Liu et al. (2016) found a flux rope for a confined flare in a bipolar active region. In our event we also found a flux rope, but this time it is confined below a null point (tripolar active region). This opens the challenging question on the universality of flux ropes for impulsive flares of whether they are eruptive or not, independently of the topology.

Panels c and d of Fig. 5 present two vertical cuts of the Q distribution, in the direction along the flux rope (Fig. 5c) and perpendicular to it (Fig. 5d), respectively indicated by a red and a cyan arrow in Fig. 5a. Similarly to Sun et al. (2013), Yang et al. (2015) and Vemareddy & Wiegmann (2014), these cuts allow us to study the null-point structure and the connectivity in the fan dome. In Fig. 5c the section passes close to the null point, and the null and its separatrices are clearly identified (see labels in Fig. 5). In the local framework $[v, z]$ of Fig. 5c, the null is located at the intersection of two very high Q lines (in black) at $[v, z] = [13, 16]$. This 2D cut shows the 2D version of a null-point topology. The fan separatrix corresponds to the arc-shaped black line, and the outer (inner) spine corresponds to the black line of high Q almost vertical and extending upward (downward) from the null. The 2D perpendicular cut (Fig. 5d) is further away from the null and the fan presents a multi-lobe morphology instead of a smooth arc-shaped structure. While a smooth dome shape of the fan is standard for idealized null points (Pariat et al. 2009; Masson et al. 2012; Sun et al. 2013; Pontin et al. 2016), the fan surface in real solar events can present a complex 3D shape.

The quasi-connectivity domain containing the flux rope is bounded at the top by the fan surface and at the bottom by a network of low-lying QSLs (see labels in Figs. 5c and d). The flux rope indeed corresponds to an independent quasi-connectivity domain bounded by QSLs. Part of the low-lying QSL forms a hyperbolic flux tube (HFT; Titov et al. 2003) located at $[v', z] = [14, 6]$ in Fig. 5d. HFTs are characteristic features associated with flux ropes which have been predicted theoretically and clearly identified in numerical models

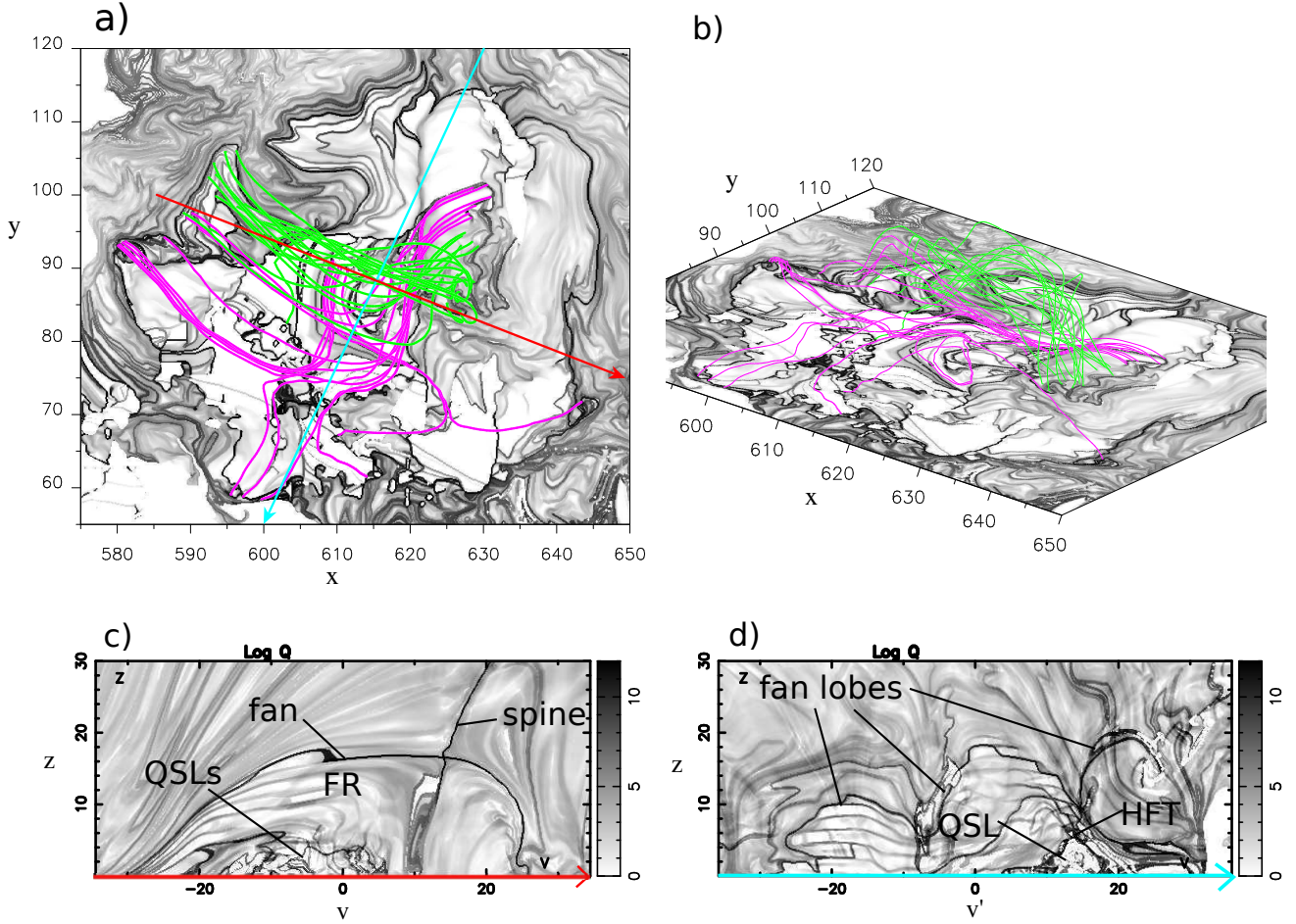


Fig. 5. Q -factor distribution in the inner connectivity domain. *Panels a and b:* top and 3D views of a zoom of the distribution of the Q -factor at $z = 0$ in the parasitic polarity region enclosed below the fan area, with $\log Q = 1$ in white and $\log Q = 12$ in black. The pink lines show low-lying internal QSLs confined below a green flux rope. *Panels c and d:* vertical 2D cuts along the red and blue arrows plotted in *panel a*, respectively, of the Q -factor computed from $z = 0$ to $z = 30$ Mm. The Q -factor is grey-shaded with white and black respectively showing $\log Q = 0$ and $\log Q = 12$. The x - and y -axis units are in arcseconds defined by the CEA projection.

and observations (Aulanier et al. 2010; Savcheva et al. 2012c,b, 2015; Janvier et al. 2013; Zhao et al. 2014). The field lines belonging to this HFT are plotted in pink in Fig. 5a and b. These field lines bound the flux rope from below and connect some spots of the inner spine QSL-halo with several distinct points of the inner fan. As can be seen on the 2D cuts, the observed HFT is far more complex than in toy models (e.g. Aulanier et al. 2006, their Figs. 4 and 7).

4. Impulsive phase

In order to investigate the dynamics of the flare, we co-align the AIA multi-wavelength images and the magnetic field data derived from the extrapolation. This allows us to identify the topological elements (Sect. 3.3) associated with the plasma emission along the observed EUV flare loops. Field lines present in the extrapolation of the 15:00 UT magnetogram are expected to be present in a very similar state until major changes of the photospheric magnetic field occur. For this reason, even though there is a 10 to 20 min time difference between the magnetogram and the EUV signatures, it is possible to use the NLFFF extrapolation field lines to model the pre-flare configuration that leads to the observed post-flare loops. To do so we overplot field lines of the topological elements identified in Sect. 3 in the AIA images. To minimize the ambiguity on the thermal properties, we select the

AIA channels with a well-defined temperature response function to diagnose the hot, warm, and cold plasma emission (Reale 2010; Guennou et al. 2012). Therefore, we ignore the 335 Å line. However, we use the 131 Å line to track the hot plasma emission. Even though this line has two contributions to the line width, they are well separated and are sensitive to a cold ($T \approx 10^{5.6}$ K) and a hot ($T \approx 10^7$ K) component. According to the AIA observations described below, the hot component of the line is likely to be the majority emission at 131 Å. We also prefer to use the 171 Å line ($T = 10^{5.8}$ K) to diagnose the cool emission instead of the 193 Å that has a warm ($T \approx 10^{6.1}$ K) and a hot peak ($T \approx 10^{7.3}$ K). Finally, we use 211 Å line peaking at a warm temperature ($T \approx 10^{6.3}$ K).

4.1. Reconnection along the hyperbolic flux tube

At the beginning of the flare, the null-point reconnection has not started yet (no outer spine brightening are observed), although some brightenings are observed inside the quasi-circular ribbon (see Sect. 2.1). Figure 6 shows those brightenings detected at 1600 Å, 131 Å, and 171 Å at 15:13 UT. On each AIA image, we overplot the HFT pink field lines. First, their footpoints are perfectly co-spatial with the bright kernels observed at 1600 Å. Second, we identify two bright loops (or strands) in the hot

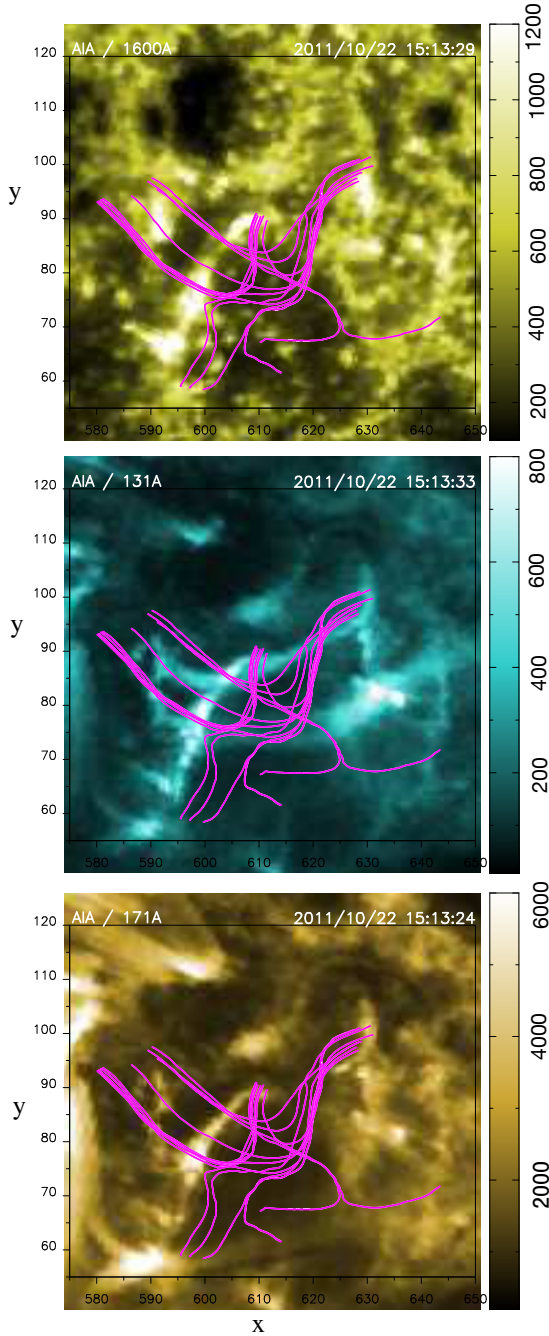


Fig. 6. AIA images co-aligned with the magnetic field extrapolation zoomed in the region where the pink HFT related QSL field lines are observed. The CEA projection is used for the co-alignment. *From top to bottom*, the EUV images are at 1600 Å, 131 Å, and 171 Å and show multiple bright strands and kernels. The field of view for the magnetic field data is $x = [580, 650]''$, $y = [55, 120]''$ in the CEA projection frame. The field of view of the AIA images is slightly larger.

(131 Å) and in the warm (171 Å) lines (see online material, middle and right panels and Fig. 6). These strands connect the 1600 Å bright kernels located at the footpoints of the HFT pink field lines and have an overall shape very similar to the HFT pink field lines. Unlike the bright kernels at 1600 Å, these bright loops are not completely co-spatial with the HFT pink field lines. The observed shift in Fig. 6 between the loops and the magnetic field lines is a direct consequence of the applied CEA projection (Sect. 3.2). The spatial correspondence between the kernel

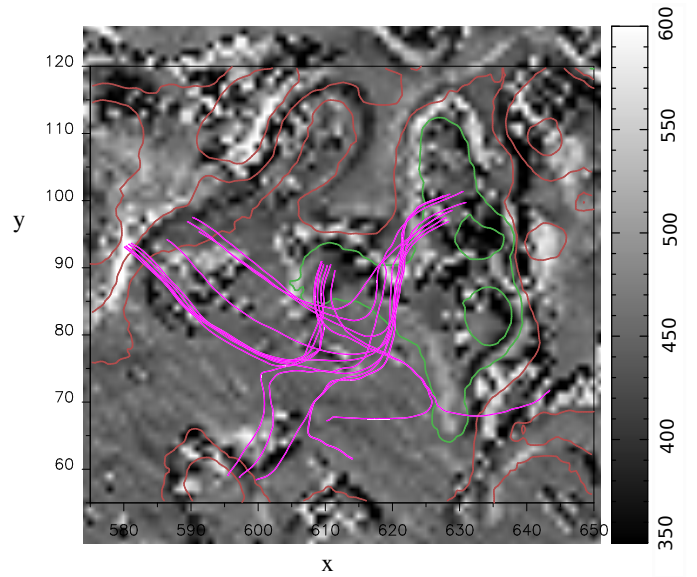


Fig. 7. Top view of the photospheric map of the vertical current resulting from the NLFFF extrapolation from the HMI vector magnetogram (in greyscale). The colour scale ranges from $350 \times 1.6 \times 10^{-6} \text{ A m}^{-2}$ to $600 \times 1.6 \times 10^{-6} \text{ A m}^{-2}$. Red and green iso-contours correspond to positive and negative $B_{\text{los}} = \pm 40, 250, 750 \text{ G}$, respectively. The pink field lines correspond to the HFT related QSL field lines. The field of view for the magnetic field data is $x = [580, 650]''$, $y = [55, 120]''$ in the CEA projection frame. The field of view of the vertical current image is slightly larger.

and the HFT footpoints suggests that reconnection across these QSL is most certainly responsible for the EUV emission observed with AIA very early during the flare, prior to the onset of reconnection at the null point (see Sect. 2.1). The presence of bright loops connecting these bright kernels and displaying a shape very similar to the HFT pink field lines argues strongly in favour of reconnection inside the HFT and its associated QSL, leading to the EUV emission along the loops and at the loop footpoints, confirming the results of Reid et al. (2012). Furthermore, these brightenings last over the entire flare indicating that reconnection is still occurring at the HFT.

While the photospheric currents are usually cleaned by the pre-processing of the magnetogram for reasons of numerical stability, we were careful to keep the most significant part of the photospheric electric currents in our pre-processing and extrapolation method (Sect. 3.1). In Fig. 7 we focus on the fan region and we show the vertical current density at the photosphere. We overplot the HFT's pink field lines in order to address the origin of the bright kernels and loops observed inside the fan. The footpoints of the HFT pink field lines, which is a coronal structure, are located in a region of high photospheric vertical current density. The vertical current density observed at the solar surface is the photospheric trace of the currents flowing through magnetic structures. The presence of strong currents located at the HFT footpoints is strong evidence that the HFT magnetic field carries electric currents. By definition, the HFT is a region with high Q values, i.e. a preferential site for magnetic reconnection (Aulanier et al. 2005). The presence of currents in the HFT is undeniably the best observational evidence that magnetic reconnection occurs in the HFT and the observed bright loops and kernels inside the fan result from the HFT magnetic reconnection. While HFTs are often found in observations (e.g. Savcheva et al. 2015), to our knowledge this is the first time that magnetic reconnection

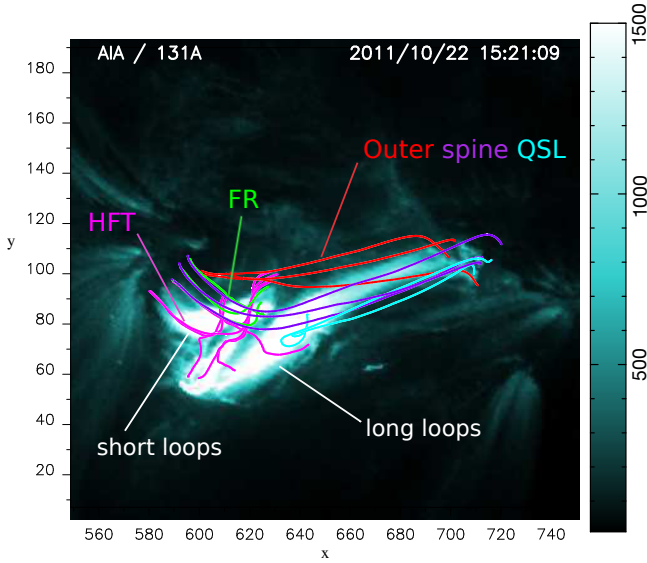


Fig. 8. Association between the EUV post-flare loops and the topological elements: 131 Å image at the time of the main phase of the flare (15:21 UT) on which is overplotted green field lines corresponding to the flux rope structure, pink lines showing the HFT related QSL field lines, red and purple lines representing the outer spine QSL-halo, light blue field lines showing the field connecting the outer spine and R3. The CEA projection is used for the co-alignment and the x - and y -axis units are in arcseconds defined by the CEA projection.

along an HFT has been clearly identified in an observation of a non-eruptive compact flare.

4.2. Null-point reconnection

Figure 8 shows the 131 Å AIA image at the time of the flare (15:21 UT), overplotted with a few field lines for each topological element: the HFT (pink), the flux rope (green), and the upper (purple) and lower (red) outer spine QSL field lines. For clarity, this figure should be used as a reference in this section. After the HFT reconnection phase, the system enters its main flare phase. The time sequence is shown in Fig. 9. It includes the main flare episode during which solar ribbons form, extend, and intensify, and the beginning of the decaying episode when the brightenings start to fade (15:24 UT). In each panel we plot the same field lines as in Fig. 8 characterizing each identified topological elements (see labels in Fig. 8). In the right column of Fig. 9, we associate the field lines with the UV ribbons described in Sect. 2.1 (and indicated in Fig. 1):

- the footpoints of the green flux rope connect R1 and the inner spine ribbon (see Sect. 3.4);
- the red outer spine QSL field lines connect the northern part of the circular ribbon (R1) and the south-eastern part of the inverse-Z outer spine ribbon (see Sect. 3.3);
- the purple outer spine QSL field lines connect R2 and the north-western part of the inverse-Z outer spine ribbon (see Sect. 3.3);
- R3 is located at the footpoints of the yellow fan field lines and is connected to the outer spine ribbon by the light blue field lines;
- as discussed in Sect. 4.1, the QSLs of the HFT (pink field lines) connect the inner spine ribbon mainly with R1 and R2 (Fig. 6).

In addition to the association of the field line footpoints and the photospheric brightenings, we use the other AIA channels to associate the field with post-flare loops. Short and long bright loops (see labels in Fig. 8) first appear at 15:14 UT at 131 Å (first column in Fig. 9), but not in the warm (171 Å and 211 Å) line until the late EUV phase (see Sect. 5). The short loops are located beneath the fan surface and connect $[x, y] \approx [580, 90]''$ and $[x, y] \approx [620, 90]''$, while the longer loops connect the eastern part of the circular ribbon ($[x, y] \approx [580, 50]''$) and the remote ribbon ($[x, y] \approx [700, 100]''$). Based on the magnetic field distribution, the short loops match the green flux rope and originate from magnetic reconnection of the overlying field across the null point and the associated QSL-halo. The long loops are co-spatial with the purple outer spine QSL-halo and correspond to field lines originally beneath the fan that have reconnected across the null point and the associated QSL-halo. Since the post-flare loops are observed after reconnection occurs, the bright loops and the extrapolated pre-flare field lines do not overlap perfectly. Nonetheless, the good agreement between the 131 Å loop footpoints, the chromospheric ribbons, and the reconstructed magnetic field lines (see Figs. 8 and 9) strongly indicates that the flux rope and the outer QSL are the principal magnetic fluxes involved during the flare.

Since solar ribbons trace the footpoints of the reconnected flux, their spatial evolution provides information about the dynamics of the flux transfer during the flare. Indeed, a displacement of the solar ribbons perpendicular to the polarity inversion line is very likely to indicate a flux transfer between two distinct connectivity domains, while a motion parallel to the PIL suggests a continuous change of connectivity in a single connectivity domain. As described in Sect. 2.1 and seen on the 1600 Å high cadence movie (see online material, left panel), the global spatial evolution of the circular ribbons displays an anticlockwise propagation. In addition, R1 moves northward perpendicularly away from the PIL, and indicates a flux transfer from the inner to the outer connectivity domain in that portion of the fan.

The displacement of R2 and R3 parallel to the circular PIL suggests a slipping reconnection process. Slipping reconnection that leads to brightening propagation along the PIL is an intrinsic property of magnetic reconnection episode in a null-point topology. It has indeed been widely showed observationally (Masson et al. 2009; Wang & Liu 2012; Sun et al. 2013; Yang et al. 2015) and numerically (Masson et al. 2009, 2012; Pontin et al. 2011, 2013). These motions occur simultaneously with the extension along the inverse-Z shape of the outer spine ribbon studied in detail by Deng et al. (2013), which are most likely caused by a slipping reconnection regime across the outer spine QSL-halo in the null vicinity. In the meantime, the two 131 Å hot loops exhibit an apparent slipping motion along the quasi-circular ribbon in the anticlockwise direction (see online material, middle panel). This motion is synchronized with the anticlockwise propagation of the chromospheric brightening along the circular ribbon at 1600 Å. The spatial association of these “slipping post-flare loops” with the green flux rope and the outer spine QSL-halo suggests that the slipping motion of the post-flare loops is the observational consequence of magnetic reconnection across the QSLs (green flux rope and the outer spine). Both flare loops exhibit a southward motion which is in agreement with the displacement of R1 and R2 along the quasi-circular ribbon.

The synchronous evolution of the short and the long hot loops indicates a common origin. For a 3D null point there are only two distinct connectivity domains and not four as in the

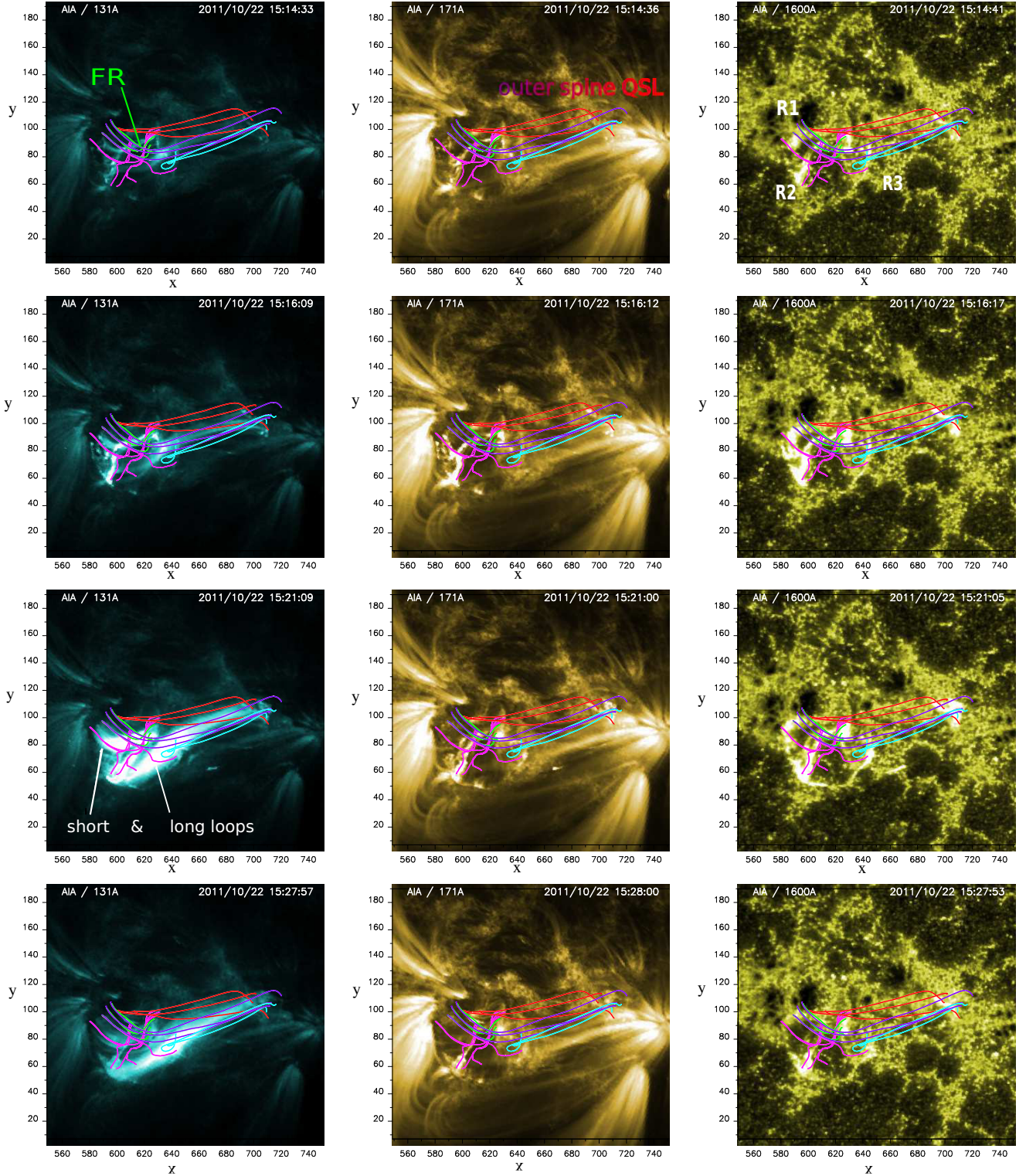


Fig. 9. Time sequence of the AIA images during the main reconnection episode of the flare. Each column corresponds to an AIA channel observing the flare (from left to right: 131, 171, and 1600 Å) and each row displays a time during the main null-point reconnection episode (from top to bottom: 15:14:21 UT, 15:16:09 UT, 15:21:00 UT and 15:27:57 UT). The overplotted field lines are coloured as described in Fig. 8. The CEA projection is used for the co-alignment. The field of view for the magnetic field data is $x = [550, 750]''$, $y = [10, 190]''$.

“2D null-point” picture. Therefore, we do not expect to exchange only flux between two “opposite” domains as pictured in 2D, but between the connectivity domains enclosed below the fan surface and outside it (e.g. Wyper & DeVore 2016). A plausible scenario that could explain the appearance around 15:14 UT of the two flare loops as well as the displacement of R1 and

R2 along the quasi-circular ribbon consists of the exchange of connectivity between the green flux rope and the red and purple outer QSL field lines at the null point. One footpoint of the flux rope anchored at the fan becomes connected to the outer spine ribbon, forming the long flare loops, and the footpoints of the outer QSL field lines initially connecting R1 and R2 to the

outer ribbon, now connects R1 and R2 to the inner spine ribbon. The new magnetic loops belong to the inner domain forming the short post-flare loops. Initially (at 15:14 UT) the footpoints of the long loops are anchored in the bottom part of the outer spine ribbon (first column in Fig. 9) suggesting that the flux reconnecting in the first place with the flux rope corresponds to the red field line. After being newly formed by null-point reconnection between the flux rope and the overlying field, the long flare loops are slip-reconnecting across the outer spine QSL-halo and the short flare loops across the QSL structures surrounding the inner spine as well as the flux rope. In the meantime, the conjugate footpoints of the long loops, anchored at the outer spine ribbon also go under slipping reconnection. This leads first to the extension of the bottom of the outer spine ribbon and then to the formation of the upper part of the inverse-Z shape (Deng et al. 2013).

During the flare, R3 does not drift as much as R1 (see online material, left panel). According to the magnetic field configuration, R3 is located at the footpoints of yellow field lines enclosed below the fan and at the light blue field line footpoints. The absence of observed post-flare loops connected to R3 prevents us from identifying which magnetic fluxes reconnect and lead to R3 formation. However, it is reasonable to argue that the yellow field lines, which initially connect the inner spine and R3, reconnect with the overlying field, connecting R2 and the remote ribbon. The two resulting fluxes connect R2 to the inner ribbon and the remote ribbon to R3, similarly to the light blue field line. In this scenario, the new flare loops would be hidden by the short and long loops at 131 Å, but would appear later in other channels during cooling episodes, as we do actually observe (see Sect. 5).

Compared to previous null-point eruptive flare studies (Sun et al. 2013; Liu et al. 2013), our event presents a major difference in the post-flare loops location due to its non-eruptive nature. For an eruptive flare, the reconnection at the null point aims to remove the confining flux from above the flux rope, creating post-flare loops closing down in the side lobes (Antiochos et al. 1999; Sun et al. 2013), i.e. below the fan and below the outer spine. During our non-eruptive event, post-flare loops are not observed below the fan, but above the outer spine, i.e. magnetic flux overlying the null point is increasing, instead of decreasing as expected for a breakout-type eruption.

The above interpretation of the flare dynamics is able to relate the different elements of the magnetic field topology, as reconstructed via NLFFF modelling from photospheric observations, with the observed time sequence of brightening in practically all AIA channels. We believe that we have identified the main players of the process (the HFT and flux rope system within the large-scale null-point structure) and interpreted a possible generation sequence of the different observed flare phases. However, this interpretation remains hypothetical, mainly because observations do not help constrain the flux rope dynamics enough. A proper validation of the above explanation would require a fully fledged MHD simulation that has our NLFFF extrapolation as an initial condition, and evolved under data inspired, or constrained, photospheric flows.

5. EUV late phase

After the main impulsive phase of the flare we identified three other peaks in the EUV emission (see Sect. 2.2 and Fig. 2) which we consider as late EUV phases. Each of the three local maxima at 335 Å is followed by a peak in colder channels at 171 Å and 211 Å. Each of these three episodes are sequentially

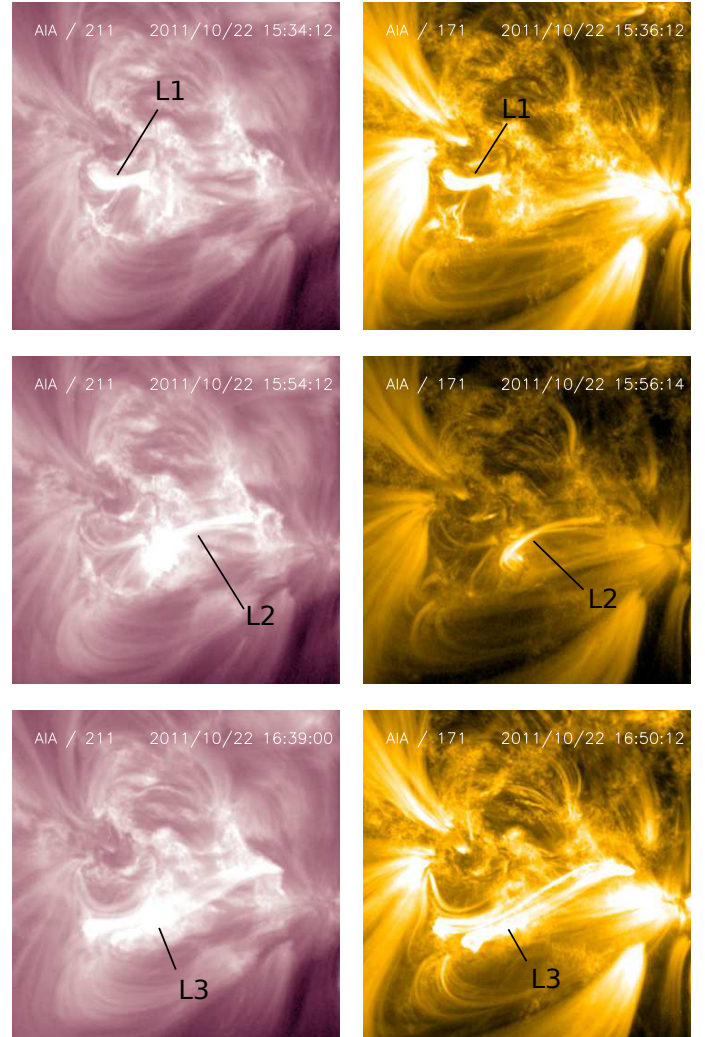


Fig. 10. Time sequence of AIA images showing one time for each EUV late episode. *From top to bottom*, the rows show AIA images at three times around the peaks at 171 Å and 211 Å. Each column corresponds to an AIA channel observing the flare, *from top to bottom*: 211 Å, and 171 Å. The images are in the observer's view and the field of view is the same as in Fig. 1.

organized such that the EUV light curves peak successively in 211 Å (purple curve in Fig. 2), 193 Å (not shown here), and 171 Å (yellow curve), i.e. lines ranging from warm to cold temperatures. This sequential evolution has already been noticed for eruptive X-class circular-ribbon flares (Dai et al. 2013; Liu et al. 2013; Sun et al. 2013). If those EUV late phases are caused by a cooling process of post-flare loops, we expect that the emitting loops associated with the first EUV late phase are shorter than the loops associated with the last episode (Reale 2010).

As in Sect. 4.2, we associate the flare loops with the EUV late phase post-flare loops at 15:34 UT, 15:54 UT, and 16:39–16:50 UT (Fig. 10). Contrary to Woods et al. (2011), we find that the two hot loops emitting at 131 Å (Fig. 8 and the first column, third panel in Fig. 9) are co-spatial with the loops observed at 171 and 211 Å (Fig. 10) and must therefore have the same origin (Liu et al. 2013). The first EUV phase correspond to the L1 post-flare loops associated with the green flux rope (first row, Fig. 10). The second peak originates from the flare loops, L2, connecting the remote outer ribbon and R3 (middle row, Fig. 10), as the light blue field lines do (cf. Figs. 8 and 9). Those post-flare loops

could coincide with the connectivity exchange between southern fan flux with the outer magnetic flux as described in Sect. 4.2 to explain R3 formation. Finally, the last peak between 16:39 and 16:50 UT corresponds to the longest loops (L3) which connect the outer spine ribbon to R2 and R3, i.e. the upper outer QSLs (bottom row, Fig. 10).

The association of the three EUV late phases with different sets of flare loops suggests a correlation between the time delay of the EUV late phase and the length of the emitting loops. In our event, the flux rope related flare loops are the shortest (length estimation $L_{L1} \approx 35$ Mm) and brighten first, ≈ 16 min after the maximum of the main episode. Then, the flare loops associated with the second peak are longer ($L_{L2} \approx 60$ Mm) and start to emit ≈ 36 min after the main episode peak. Finally, ≈ 81 min after the main episode, the last peak indicates the cooling of even longer loops ($L_{L3} \approx 100$ Mm) that connect the outer spine ribbons and R2 and R3. For each peak, i.e. for each post-flare loop, a time delay is observed between the local maxima of the light curves: the coolest line (171) peaks after the warmer one (193), which peaks after the hottest one (211) suggesting a cooling process of plasma-filled loops during those three episodes. These time delays are observed in Fig. 2. Figure 10 displays the AIA images at the different time of the EUV late phase in order to highlight the association of the magnetic field with the loops at their maximum of emission. The spatial location of the emitting loops associated with temporal evolution of the EUV channels strongly indicate that the three EUV late phases observed during this event originate from the cooling of post-flare loops by radiative loss process.

According to the dynamics of the flare inferred from the AIA images combined with a highly detailed topological analysis (Sect. 4.2), those post-flare loops, i.e. the EUV late phase, result from a single reconnection episode occurring at the null point. Sun et al. (2013) draw a similar conclusion, but instead of three sets of post-flare loops, they only have two associated with the EUV late phases. This difference may be explained by the nature of the flare. Contrary to our confined event, Sun et al. (2013) studied an eruptive one. In addition to the null-point reconnection there is the “flare reconnection” below the erupting flux rope which occurs during the main phase of the flare. The resulting post-flare loops (A1-loop in their Fig. 1) are very short and their emission contributes to the impulsive phase of the flare, but not to the late EUV phase. Even though our results indicate a cooling process to explain the EUV late phase, we cannot rule out that additional reconnection episodes may occur later in the flare but are hidden by the post flare loops emission. Our results also differ from previous studies concluding that the EUV late phase were caused by several reconnection episodes (Dai et al. 2013; Liu et al. 2013). However, Li et al. (2014) revisited four events with EUV late phase by analysing their magnetic topology. They found systematically a null-point topology, i.e. magnetic configuration involving loops of very different length.

6. Discussion and conclusion

We present a comprehensive study of a confined circular flare observed by SDO on October 22, 2011, which extends the Deng et al. (2013) study which focuses on spine dynamics. By combining a detailed topological analysis and EUV observations imaging the radiative signatures, we propose a complete 3D dynamics of the magnetic field configuration that describes the evolution of the flare.

We reconstruct the magnetic field of the event by using a NLFFF extrapolation and analyse its topology by computing

the Q -factor. This allows us to identify most of the magnetic structure of the active region. First, we find a null point, its associated separatrices, the fan and the spines, and the QSL-halos surrounding them. By comparing the separatrix footpoints and the ribbon location we obtain an excellent match between the fan footpoints and the circular ribbon. While the outer spine footpoint is not perfectly co-spatial with the remote ribbon, the mismatch is only 14 Mm which is a much smaller distance than found in any other studies to date. This almost perfect overlap between the ribbons and the separatrix footpoints implies that the reconstructed magnetic field is indeed very close to the real one. This reveals that our NLFFF extrapolation is able to accurately reproduce both an acceptable current distribution as well as the large-scale magnetic field configuration.

In addition to the null-point topology embedded in its QSL-halo, we identify the presence of a flux rope and its associated HFT. Finding flux rope in eruptive events is quite common. However, investigating the origin of a confined flare, which are usually weak flares, has not been an active research topic over the past few years. Flux ropes were first identified as the trigger of a confined flare by Wang et al. (2015) and Liu et al. (2016). In the present event, we confirm the role of flux ropes as the driver of confined flares, and for the first time in a null-point topology. This result suggests that flux ropes may be present at all scales and that they are essential to any impulsive solar event, whether eruptive, confined, or jet-like. Indeed, a flux rope carries current and indicates the non-potentiality of the system which should help to destabilize it.

The presence of an HFT below the flux rope has been highlighted several times in observations using the Q -factor computation (Savcheva et al. 2012a; Zhao et al. 2014). Nonetheless, in our study, we show that prior to the main null-point reconnection flare, reconnection occurs along the HFT. In addition to the co-spatiality of the HFT footprints and field lines with the EUV bright kernels and loops, we show that intense vertical electric currents are concentrated at the HFT footpoints. This indicates that HFT is loaded by electric currents, which is undeniable proof that magnetic reconnection occurs inside the HFT.

As expected for reconnection at the null point, a circular ribbon is formed, and an inner and a remote elongated ribbon are formed. We also observe the propagation of brightening along those three ribbons which is fully consistent with some slipping reconnection across the null-point QSL-halo (Masson et al. 2009). Moreover, using our topological analysis to interpret the EUV emission along the post-flare loops we show that the flare should mainly involve reconnection at the null point between the flux rope in green and the overlying magnetic flux in purple and red (see Fig. 8). Based on these results, we propose a scenario for the confined flare. In response to the photospheric flux injection, magnetic reconnection develops along the HFT associated with the flux rope. This should imply a growth of the flux rope as predicted by the standard 3D model of solar eruption (Janvier et al. 2013). As a consequence, the flux rope rises, and it eventually reaches the null point and the fan separatrix. Then the flux rope reconnects with the overlying flux above the null point. It leads to the formation of the intense brightening in the north-east of the circular ribbon (R1, Sect. 2.1) and of the post-reconnected loops undergoing slipping reconnection in the QSL-halo. In the meantime, reconnection at the null point occurs between the flux below the fan (materialized by the yellow field lines in Fig. 4) and the overlying field which leads to the formation of the circular ribbon itself.

In addition to the flaring phase, we also obtain information on the post-flaring phase. In previous studies, the sets of

post-flare loops were directly associated with the eruptive nature of the eruption. In Woods et al. (2011) and Hock et al. (2012), the observed late EUV phase is co-temporal with the appearance of large-scale post-flare loops resulting from the reconnection of the large closed loops initially confining the flux rope. These post-flare loops being very long, they brightened several hours after the main flare phase. A different example of EUV late phase related to post-flare loops has been studied by Sun et al. (2013). In their event, similarly to the two previous studies, they identified two post-flare loops, the first resulting from the null-point reconnection acting as a breakout reconnection, i.e. removing the flux above the flux rope but enclosed below the fan, and the second as a consequence of the flux rope eruption itself. The particularity of our event relies on its non-eruptive nature, which is responsible for the formation of three sets of post-flare loops of different length. These sets of post-flare loops are temporally correlated with EUV late phases observed in the AIA light curves in cold and warm channels. The thermal evolution of each of the post-flare loops combined with the order of appearance as a function of the length of these loops strongly indicate that a cooling process is at the origin of the three observed EUV late phases.

Unlike the eruptive flare (Sun et al. 2013), here the flux rope does not erupt; instead, it reconnects with the overlying field. In the present event, the reconnection very likely processes most of the magnetic flux of the flux rope and prevents it from erupting. While we cannot confirm this statement, we can still discuss its implication with respect to the triggering mechanism of a flux rope eruption. Two competitive models have been proposed to explain the ejection of a flux rope: the torus instability (Török & Kliem 2007) and the breakout model (Antiochos et al. 1999). The torus instability requires that the flux rope reaches an altitude with a rapid decrease in the magnetic field with height. The breakout model proposes that the overlying flux needs to be removed while the energy is building up in the flux rope itself in order to inverse the force balance of the system. In both scenarios the overlying magnetic field has to be small enough to allow the flux rope to erupt. In our studied event, the null point is confined deep in the corona and the amount of magnetic flux above the null point might be too strong for the flux rope to get through. Instead, it entirely reconnects with the overlying field, failing to produce an eruption. This suggests that the flux ratio between the flux rope and the overlying flux may be important in order to determine the eruptive nature of a flux rope. Liu et al. (2015) studied an event where the flux rope was not confined homogeneously. A section of the flux rope with a high ratio of the flux rope magnetic field on the confining field erupts, while the flux rope section with a low ratio remains confined. The part of the flux rope with a strong field compared to the overlying field erupts, while the part strongly confined by the strapping field does not.

Circular ribbons and null-point topologies are also typically associated with solar coronal jets (Moreno-Insertis et al. 2008; Wang & Liu 2012; Pariat et al. 2009, 2015; Moreno-Insertis & Galsgaard 2013). Observational evidence accumulates for the presence of a flux rope in the pre-jet magnetic configuration (Raouafi et al. 2010; Sterling et al. 2015). Some of the magnetic structures present in this confined event are typical of jet-like events. The magnetic flux rope reconnecting with the overlying field should transfer its twist to the outer magnetic field. This could lead to the generation of propagating torsional Alfvén waves, which can be observed as a jet (Pariat et al. 2009, 2015; Archontis & Hood 2013). Why is no jet observed in the present

event and why do the dynamics of the event lead to a confined flare?

The answer is likely to be related to the geometry of the magnetic configuration. Jets usually develop when the surrounding field is uniform with respect to the typical scale of the closed source region (Shimojo et al. 2001). In the present configuration, the length of the outer spine, L , is of the same order as the width, N , of the fan region. In a recent MHD numerical study, Wyper & DeVore (2016) show that jet formation depends on the ratio L/N . Clear jets preferentially develop for a high L/N ratio. In the present event, the L/N ratio is close to unity which prevents the system from launching propagating torsional Alfvén waves, i.e. no jets were observed. It is interesting to note that in the simulations of Edmondson et al. (2009) and Lynch et al. (2014), a non-linear propagating torsional Alfvén wave appears immediately after the null point switched from a closed ambient magnetic field (with a low L/N ratio) to an open one (with an infinitely high L/N ratio). Wang & Liu (2012) present an observation in which a confined flare configuration with a circular ribbon and an outer ribbon followed by a jet event are sequentially observed. They propose that this transition from confined flare to jet results from the opening of the outer spine during the event. This is equivalent to the transition from a null-point topology with a low L/N ratio ($\ll 1$) to a null-point topology with a high ratio ($\gg 1$).

For small-scale non-eruptive flares such as the one studied here, the association of a flux rope confined in a null-point topology may be relatively common. Magnetic null point appears when magnetic flux tube emerges in a pre-existing dipolar region, creating a quadrupolar configuration (e.g. Török et al. 2009). In our case, the confinement of the flux rope by the null point most likely helps to energize the system, and later to release the flare energy impulsively. Indeed, by restraining the expansion of the flux rope, the null point is allowed to build up free energy in the system, which forces reconnection at the HFT and at the null point. The null point most likely plays a critical role in storing and releasing impulsively magnetic energy for flares or eruptions associated with a flux rope (Janvier et al. 2016; Joshi et al. 2015). While this requires dedicated theoretical and numerical studies, it nonetheless opens a challenging issue concerning the generic role of a separatrix surface confining the eruptive structure (i.e. flux rope) in the trigger of solar eruption.

Overall, this study presents some evidence that a flux rope confined below a null point could be a relatively universal feature for impulsive events. Indeed, it can lead to large-scale eruptive flares, solar jets, and confined flares. This suggests that the geometry of the magnetic field surrounding the null-point configuration may be fundamental in determining the dynamics of the eruption. The relative size and strength of the surrounding magnetic field compared to the amount of flux inside the null-point domain could dictate whether the erupting flux rope will develop as a full CME or will be destroyed through magnetic reconnection. In the latter case, the ratio between the fan width and the outer spine length would define whether the event becomes a jet or a confined flare.

Acknowledgements. The authors are thankful to the referee for her/his careful reading of the manuscript and useful comments. The authors are very grateful to the HMI team and in particular to Xudong Sun for providing the processed HMI data used for the extrapolation and the software to remap the data to the CEA projection. G.V. acknowledges the support of the Leverhulme Trust Research Project Grant 2014-051. C.L., N.D., and H.W. are supported by NASA under grants NNX13AF76G, NNX13AG13G, NNX14AC12G, and NNX16AF72G, and by NSF under grants AGS 1250818, 1348513 and 1408703. H.R. acknowledges support from the STFC consolidated grant ST/L000741/1 and from a SUPA Advanced Fellowship. Calculations were done on the quadri-core bi-Xeon

computers of the Cluster of the Division Informatique de l'Observatoire de Paris (DIO). The authors thanks the ESA JHelioviewer team for the JHelioviewer tool.

References

- Al-Hachami, A. K., & Pontin, D. I. 2010, *A&A*, **512**, A84
- Archontis, V., & Hood, A. W. 2013, *ApJ*, **769**, L21
- Antiochos, S. K., DeVore, C. R., & Klimchuk, J. A. 1999, *ApJ*, **510**, 485
- Aulanier, G., Parlat, E., & Démoulin, P. 2005, *A&A*, **444**, 961
- Aulanier, G., Parlat, E., Démoulin, P., & Devore, C. R. 2006, *Sol. Phys.*, **238**, 347
- Aulanier, G., Golub, L., DeLuca, E. E., et al. 2007, *Science*, **318**, 1588
- Aulanier, G., Török, T., Démoulin, P., & DeLuca, E. E. 2010, *ApJ*, **708**, 314
- Aulanier, G., Janvier, M., & Schmieder, B. 2012, *A&A*, **543**, A110
- Bogachev, S. A., Somov, B. V., Kosugi, T., & Sakao, T. 2005, *ApJ*, **630**, 561
- Bradshaw, S. J., Aulanier, G., & Del Zanna, G. 2011, *ApJ*, **743**, 66
- Dai, Y., Ding, M. D., & Guo, Y. 2013, *ApJ*, **773**, L21
- Del Zanna, G. 2008, *A&A*, **481**, L49
- Démoulin, P., Henoux, J. C., & Mandrini, C. H. 1994a, *A&A*, **285**, 1023
- Démoulin, P., Mandrini, C. H., Rovira, M. G., Henoux, J. C., & Machado, M. E. 1994b, *Sol. Phys.*, **150**, 221
- Démoulin, P., Henoux, J. C., Priest, E. R., & Mandrini, C. H. 1996, *A&A*, **308**, 643
- Démoulin, P., Bagala, L. G., Mandrini, C. H., Henoux, J. C., & Rovira, M. G. 1997, *A&A*, **325**, 305
- Deng, N., Tritschler, A., Jing, J., et al. 2013, *ApJ*, **769**, 112
- Dudík, J., Janvier, M., Aulanier, G., et al. 2014, *ApJ*, **784**, 144
- Edmondson, J. K., Lynch, B. J., Antiochos, S. K., DeVore, C. R., & Zurbuchen, T. H. 2009, *ApJ*, **707**, 1427
- Fuentes-Fernández, J., & Parnell, C. E. 2012, *A&A*, **544**, A77
- Fuentes-Fernández, J., & Parnell, C. E. 2013, *A&A*, **554**, A145
- Fuhrmann, M., Seehafer, N., & Valori, G. 2007, *A&A*, **476**, 349
- Gorbachev, V. S., & Somov, B. V. 1988, *Sol. Phys.*, **117**, 77
- Guennou, C., Auchère, F., Soubrié, E., et al. 2012, *ApJS*, **203**, 26
- Hesse, M., & Schindler, K. 1988, *J. Geophys. Res.*, **93**, 5559
- Hock, R. A., Woods, T. N., Klimchuk, J. A., Eparvier, F. G., & Jones, A. R. 2012, *ArXiv e-prints* [[arXiv:1202.4819](https://arxiv.org/abs/1202.4819)]
- Hoeksema, J. T., Liu, Y., Hayashi, K., et al. 2014, *Sol. Phys.*, **289**, 3483
- Janvier, M., Aulanier, G., Parlat, E., & Démoulin, P. 2013, *A&A*, **555**, A77
- Janvier, M., Savcheva, A., Parlat, E., et al. 2016, *A&A*, **591**, A141
- Jiang, C., Feng, X., Wu, S. T., & Hu, Q. 2013, *ApJ*, **771**, L30
- Jiang, C., Wu, S. T., Feng, X., & Hu, Q. 2014, *ApJ*, **780**, 55
- Jiang, F., Zhang, J., & Yang, S. 2015, *PASJ*, **67**, 78
- Joshi, N. C., Liu, C., Sun, X., et al. 2015, *ApJ*, **812**, 50
- Kumar, P., Yurchyshyn, V., Wang, H., & Cho, K. S. 2015, *ApJ*, **809**, 83
- Lemen, J. R., Title, A. M., Akin, D. J., et al. 2012, *Sol. Phys.*, **275**, 17
- Li, Y., Ding, M. D., Guo, Y., & Dai, Y. 2014, *ApJ*, **793**, 85
- Lin, R. P., Dennis, B. R., Hurford, G. J., et al. 2002, *Sol. Phys.*, **210**, 3
- Lites, B. W. 2000, *Rev. Geophys.*, **38**, 1
- Liu, K., Zhang, J., Wang, Y., & Cheng, X. 2013, *ApJ*, **768**, 150
- Liu, C., Deng, N., Liu, R., et al. 2015, *ApJ*, **812**, L19
- Liu, R., Kliem, B., Titov, V. S., et al. 2016, *ApJ*, **818**, 148
- Longcope, D. W. 2005, *Liv. Rev. Sol. Phys.*, **2**, 7
- Lugaz, N., Downs, C., Shibata, K., et al. 2011, *ApJ*, **738**, 127
- Lynch, B. J., Edmondson, J. K., & Li, Y. 2014, *Sol. Phys.*, **289**, 3043
- Malanushenko, A., Schrijver, C. J., DeRosa, M. L., & Wheatland, M. S. 2014, *ApJ*, **783**, 102
- Mandrini, C. H., Démoulin, P., Henoux, J. C., & Machado, M. E. 1991, *A&A*, **250**, 541
- Mandrini, C. H., Démoulin, P., Rovira, M. G., de La Beaujardiere, J., & Henoux, J. C. 1995, *A&A*, **303**, 927
- Mandrini, C. H., Démoulin, P., van Driel-Gesztelyi, L., et al. 1996, *Sol. Phys.*, **168**, 115
- Mandrini, C. H., Démoulin, P., Bagala, L. G., et al. 1997, *Sol. Phys.*, **174**, 229
- Masson, S., Parlat, E., Aulanier, G., & Schrijver, C. J. 2009, *ApJ*, **700**, 559
- Masson, S., Aulanier, G., Parlat, E., & Klein, K.-L. 2012, *Sol. Phys.*, **276**, 199
- Masson, S., McCauley, P., Golub, L., Reeves, K. K., & DeLuca, E. E. 2014, *ApJ*, **787**, 145
- Metcalf, T. R., De Rosa, M. L., Schrijver, C. J., et al. 2008, *Sol. Phys.*, **247**, 269
- Moreno-Insertis, F., & Galsgaard, K. 2013, *ApJ*, **771**, 20
- Moreno-Insertis, F., Galsgaard, K., & Ugarte-Urra, I. 2008, *ApJ*, **673**, L211
- Parlat, E., & Démoulin, P. 2012, *A&A*, **541**, A78
- Parlat, E., Antiochos, S. K., & DeVore, C. R. 2009, *ApJ*, **691**, 61
- Parlat, E., Dalmasse, K., DeVore, C. R., Antiochos, S. K., & Karpen, J. T. 2015, *A&A*, **573**, A130
- Pesnell, W. D., Thompson, B. J., & Chamberlin, P. C. 2012, *Sol. Phys.*, **275**, 3
- Pontin, D. I., Al-Hachami, A. K., & Galsgaard, K. 2011, *A&A*, **533**, A78
- Pontin, D. I., Priest, E. R., & Galsgaard, K. 2013, *ApJ*, **774**, 154
- Pontin, D., Galsgaard, K., & Démoulin, P. 2016, *Sol. Phys.*, **291**, 1739
- Priest, E. R., & Démoulin, P. 1995, *J. Geophys. Res.*, **100**, 23443
- Priest, E. R., & Forbes, T. G. 1992, *J. Geophys. Res.*, **97**, 1521
- Raouafi, N. E., Georgoulis, M. K., Rust, D. M., & Bernasconi, P. N. 2010, *ApJ*, **718**, 981
- Raouafi, N. E., Patsourakos, S., Parlat, E., et al. 2016, *Space Sci. Rev.*, **201**, 1
- Reale, F. 2010, *Liv. Rev. Sol. Phys.*, **7**, 5
- Reid, H. A. S., Vilmer, N., Aulanier, G., & Parlat, E. 2012, *A&A*, **547**, A52
- Savcheva, A., Parlat, E., van Ballegoijen, A., Aulanier, G., & DeLuca, E. 2012a, *ApJ*, **750**, 15
- Savcheva, A. S., Green, L. M., van Ballegoijen, A. A., & DeLuca, E. E. 2012b, *ApJ*, **759**, 105
- Savcheva, A. S., van Ballegoijen, A. A., & DeLuca, E. E. 2012c, *ApJ*, **744**, 78
- Savcheva, A., Parlat, E., McKillop, S., et al. 2015, *ApJ*, **810**, 96
- Savcheva, A., Parlat, E., McKillop, S., et al. 2016, *ApJ*, **817**, 43
- Scherrer, P. H., Schou, J., Bush, R. I., et al. 2012, *Sol. Phys.*, **275**, 207
- Schrijver, C. J., DeRosa, M. L., Metcalf, T., et al. 2008, *ApJ*, **675**, 1637
- Shimojo, M., Shibata, K., Yokoyama, T., & Hori, K. 2001, *ApJ*, **550**, 1051
- Sterling, A. C., Moore, R., Falconer, D. A., & Adams, M. 2015, *Nature*, **523**, 437
- Sun, X., Hoeksema, J. T., Liu, Y., et al. 2013, *ApJ*, **778**, 139
- Titov, V. S. 2007, *ApJ*, **660**, 863
- Titov, V. S., Hornig, G., & Démoulin, P. 2002, *J. Geophys. Res.*, **107**, 1164
- Titov, V. S., Galsgaard, K., & Neukirch, T. 2003, *ApJ*, **582**, 1172
- Török, T., & Kliem, B. 2007, *Astron. Nachr.*, **328**, 743
- Török, T., Aulanier, G., Schmieder, B., Reeves, K. K., & Golub, L. 2009, *ApJ*, **704**, 485
- Ugarte-Urra, I., Warren, H. P., & Winebarger, A. R. 2007, *ApJ*, **662**, 1293
- Valori, G., Kliem, B., Török, T., & Titov, V. S. 2010, *A&A*, **519**, A44
- Valori, G., Green, L. M., Démoulin, P., et al. 2012, *Sol. Phys.*, **278**, 73
- Valori, G., Démoulin, P., Parlat, E., & Masson, S. 2013, *A&A*, **553**, A38
- Vemareddy, P., & Wiegmann, T. 2014, *ApJ*, **792**, 40
- Wang, H., & Liu, C. 2012, *ApJ*, **760**, 101
- Wang, H., Liu, C., Deng, N., et al. 2014, *ApJ*, **781**, L23
- Wang, H., Cao, W., Liu, C., et al. 2015, *Nat. Commun.*, **6**, 7008
- Wheatland, M. S., Sturrock, P. A., & Roumeliotis, G. 2000, *ApJ*, **540**, 1150
- Woods, T. N., Hock, R., Eparvier, F., et al. 2011, *ApJ*, **739**, 59
- Wyper, P. F., & DeVore, C. R. 2016, *ApJ*, **820**, 77
- Wyper, P. F., & Pontin, D. I. 2014a, *Phys. Plasmas*, **21**, 102102
- Wyper, P. F., & Pontin, D. I. 2014b, *Phys. Plasmas*, **21**, 082114
- Yang, K., Guo, Y., & Ding, M. D. 2015, *ApJ*, **806**, 171
- Zhao, J., Li, H., Parlat, E., et al. 2014, *ApJ*, **787**, 88