



**HAL**  
open science

# The Magdalenian dwelling of Orp East (Belgium) and its spatial organization

Stefan Wenzel

► **To cite this version:**

Stefan Wenzel. The Magdalenian dwelling of Orp East (Belgium) and its spatial organization. Sabine Gaudzinski-Windheuser; Olaf Jöris; Martina Sensburg; Martin Street; Elaine Turner. Site-internal spatial organization of hunter-gatherer societies: Case studies from the European Palaeolithic and Mesolithic. Papers submitted at the session (C 58) "Come in ... and find out: Opening a new door into the analysis of hunter-gatherer social organisation and behaviour", held at the 15th U.I.S.P.P. conference in Lisbon, September 2006, 12, pp.141-157, 2011, RGZM – Tagungen, 978-3-88467-190-0. hal-02267000

**HAL Id: hal-02267000**

**<https://hal.science/hal-02267000>**

Submitted on 18 Aug 2019

**HAL** is a multi-disciplinary open access archive for the deposit and dissemination of scientific research documents, whether they are published or not. The documents may come from teaching and research institutions in France or abroad, or from public or private research centers.

L'archive ouverte pluridisciplinaire **HAL**, est destinée au dépôt et à la diffusion de documents scientifiques de niveau recherche, publiés ou non, émanant des établissements d'enseignement et de recherche français ou étrangers, des laboratoires publics ou privés.

**OFFPRINT FROM RGZM – TAGUNGEN BAND 12**

Sabine Gaudzinski-Windheuser · Olaf Jöris  
Martina Sensburg · Martin Street · Elaine Turner (eds)

**SITE-INTERNAL SPATIAL ORGANIZATION  
OF HUNTER-GATHERER SOCIETIES:  
CASE STUDIES FROM THE EUROPEAN  
PALAEOLITHIC AND MESOLITHIC**

Papers submitted at the session (C58) »Come in ... and find out:  
Opening a new door into the analysis of hunter-gatherer social  
organisation and behaviour«, held at the 15<sup>th</sup> U.I.S.P.P. conference  
in Lisbon, September 2006

Redaktion: Martina Sensburg, Bendorf; Martin Street, Elaine Turner, Reinhard Köster (RGZM)  
Satz: Martina Sensburg, Bendorf  
Umschlaggestaltung: Reinhard Köster (RGZM) unter Verwendung eines Plans von Gönnersdorf, S. 62 Abb.6a.

**Bibliografische Information  
der Deutschen Nationalbibliothek**

Die Deutsche Nationalbibliothek verzeichnet diese Publikation in der Deutschen Nationalbibliografie; detaillierte bibliografische Daten sind im Internet über <http://dnb.d-nb.de> abrufbar.

**ISBN 978-3-88467-190-0**  
**ISSN 1862-4812**

© 2011 Verlag des Römisch-Germanischen Zentralmuseums

Das Werk ist urheberrechtlich geschützt. Die dadurch begründeten Rechte, insbesondere die der Übersetzung, des Nachdrucks, der Entnahme von Abbildungen, der Funk- und Fernsehsendung, der Wiedergabe auf fotomechanischem (Fotokopie, Mikrokopie) oder ähnlichem Wege und der Speicherung in Datenverarbeitungsanlagen, Ton- und Bildträgern bleiben, auch bei nur auszugsweiser Verwertung, vorbehalten. Die Vergütungsansprüche des §54, Abs. 2, UrhG. werden durch die Verwertungsgesellschaft Wort wahrgenommen.

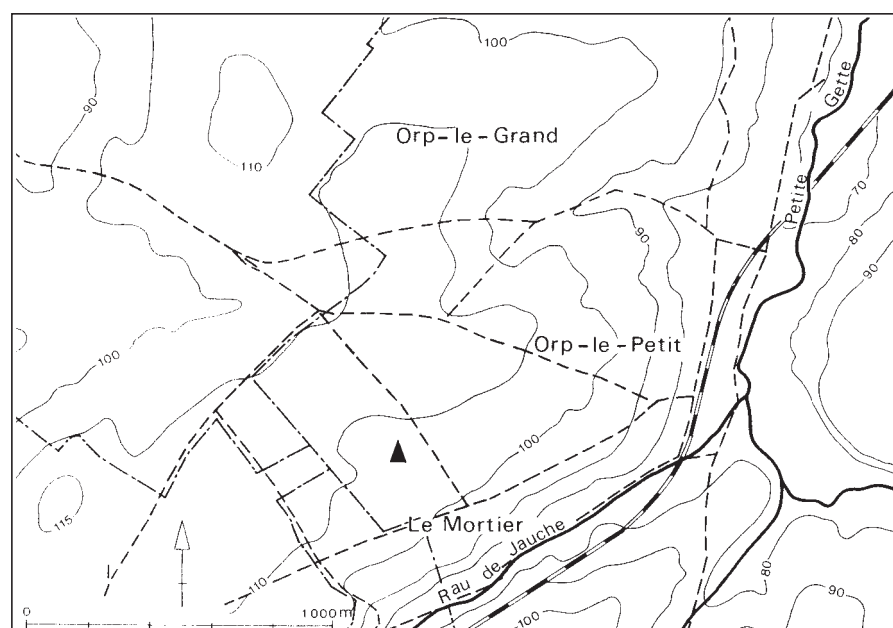
Druck: Strauss GmbH, Mörlenbach  
Printed in Germany.

## THE MAGDALENIAN DWELLING OF ORP EAST (BELGIUM) AND ITS SPATIAL ORGANIZATION

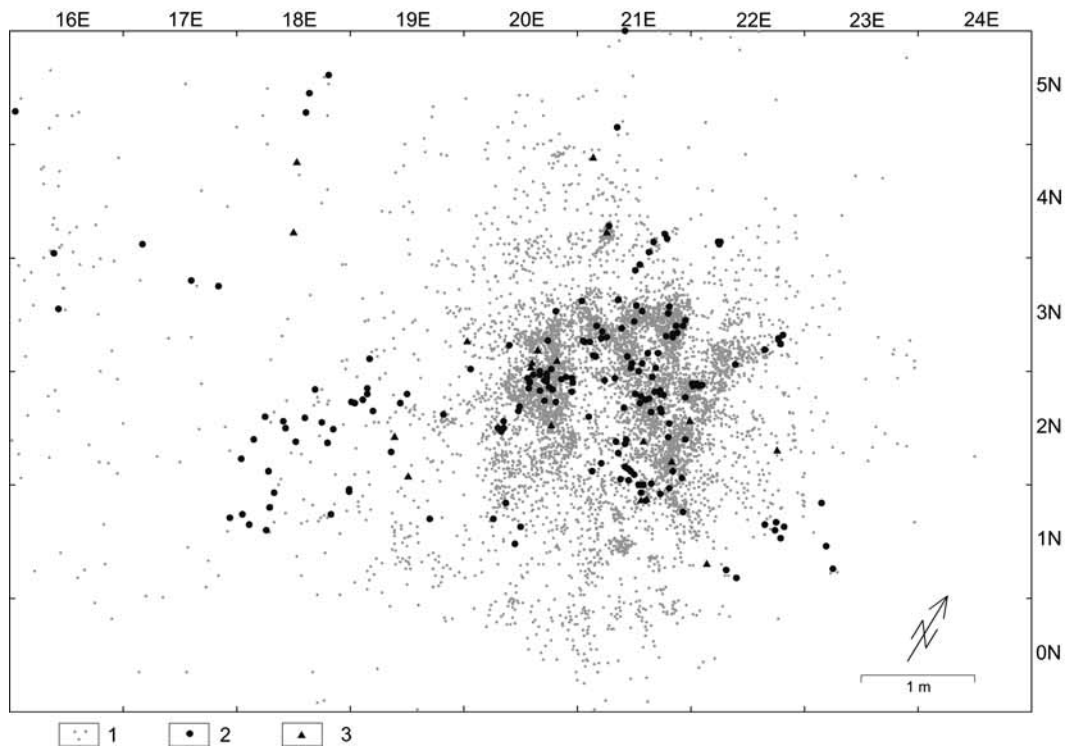
Dwellings of hunters and gatherers are valuable sources of information about the social organization of these people because both anthropological observations (Ränk 1951; Fægre 1979; Grøn / Kutsnetsow / Klokkernes 2003, 16) and archaeological data (Stapert 1989, 50; Grøn 1995, 53; McFadyen Clark 1996) show that the limited interior was frequently divided according to strict rules. A good illustration of this behaviour comes from lodges of the Chippewa occupied by more than one family, where »invisible boundaries divided the interior and rules governed everyone's movements in order to ensure order and relative privacy« (Nabokov / Easton 1989, 64). Activity areas can usually be reconstructed, which may provide evidence about the composition of the respective local groups. It is of interest to know whether dwellings were present, since the available space provided the framework for the activities of the inhabitants. In the case of Orp East, a dwelling was reconstructed by P. M. Vermeersch et al. (1984; 1987), but shortly afterwards the validity of the reconstruction was questioned by D. Stapert (1989). This paper intends to evaluate the arguments for the former presence of a dwelling at Orp East with the help of GIS software, and to examine the spatial structure of this concentration of finds.

### Topographical situation and excavation

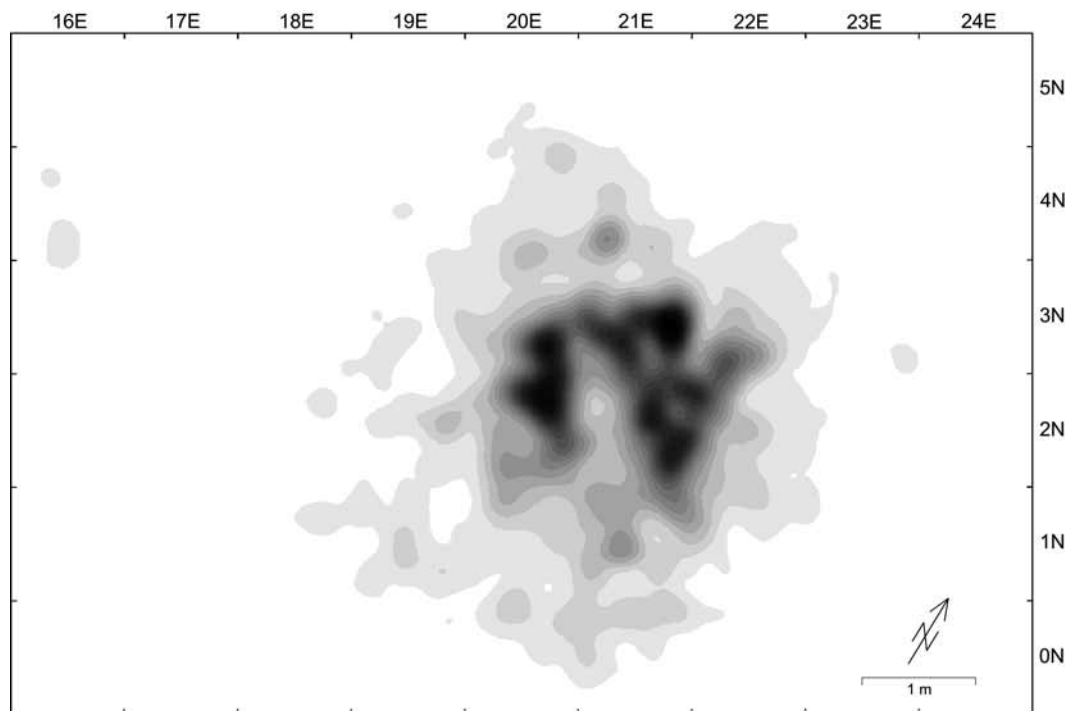
The Magdalenian site of Orp (commune of Orp-Jauche; Brabant) is situated 35km south-east of Leuven (Louvain) on a loess covered plateau, north of the Ruisseau de Jauche (fig. 1). The site was excavated in 1979 by the Laboratory for Prehistory of the Catholic University of Leuven in collaboration with the »Service



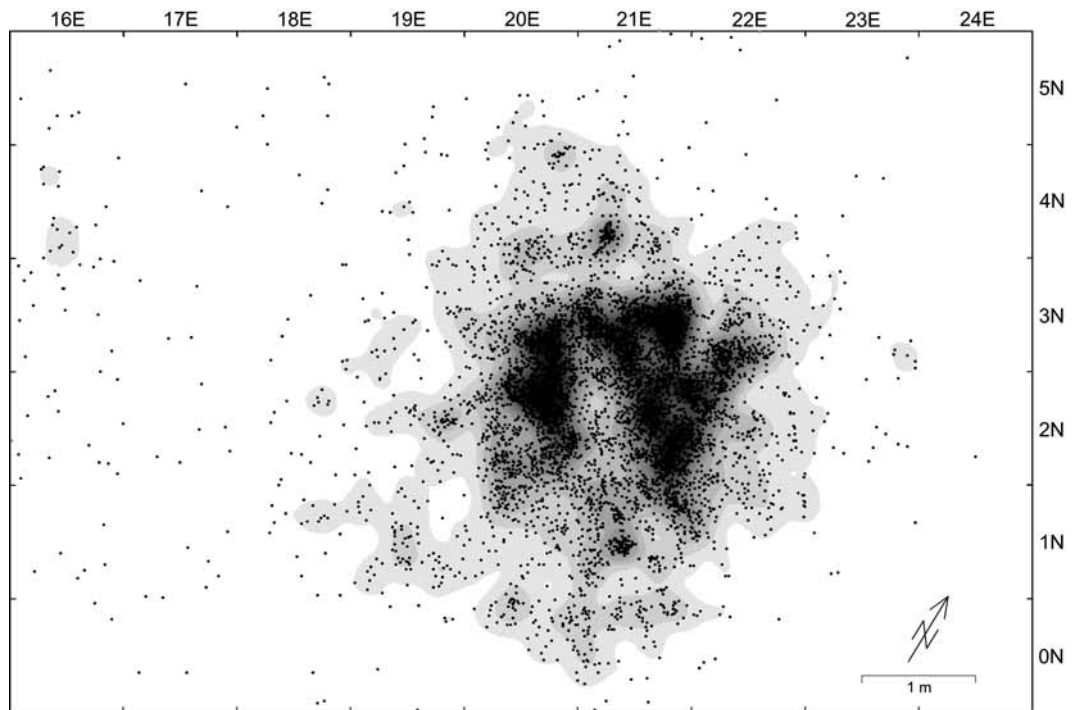
**Fig. 1** Orp. Topographical situation of the site. – (Vermeersch et al. 1987, fig. 2).



**Fig. 2** Orp East. Horizontal distribution of all individually recorded finds. – 1 artefacts; – 2 sandstone slabs; – 3 pieces of quartzite.



**Fig. 3** Orp East. Density map of all flint artefacts recorded in three dimensions, displayed using ArcGIS® 9 and Nearest Neighbour for discrete data (search radius 25 cm; classified by natural breaks; 20 classes). The maximum number of flint artefacts recorded three-dimensionally is located in quarter square metre 20E-3N b (n=585), quarter square metres with less than ten individually recorded artefacts are not shaded or only marginally shaded, cf. fig. 12 a.



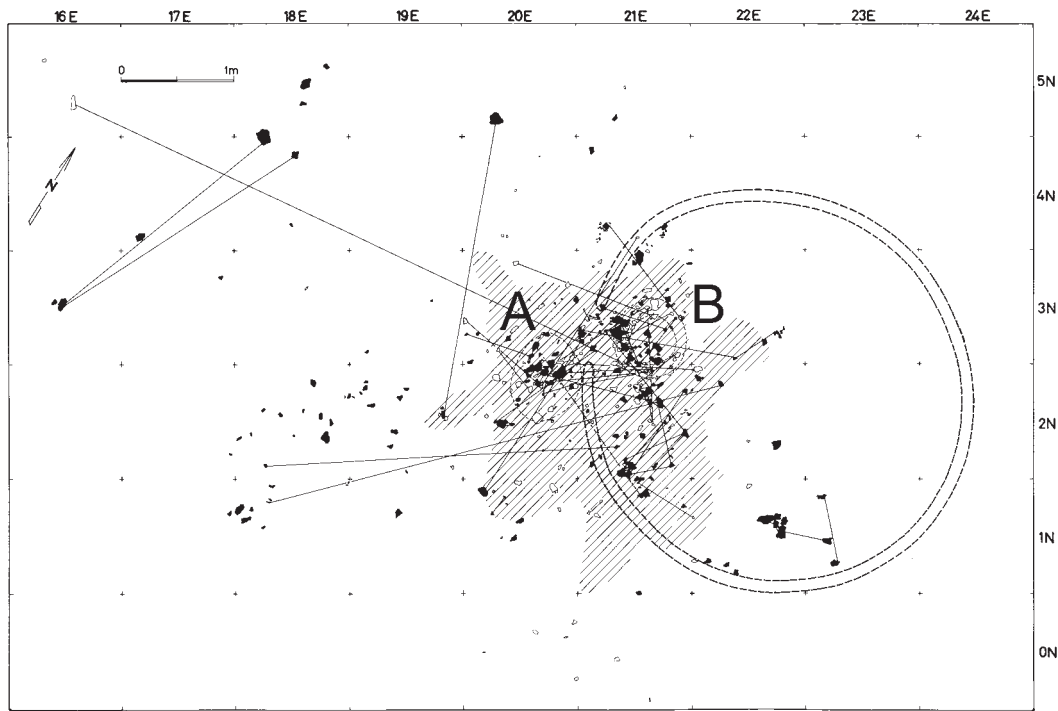
**Fig. 4** Orp East. Density map of the three dimensionally recorded artefacts shown in fig. 3. To facilitate the comparison the represented artefacts are plotted separately.

National des Fouilles» and the municipal administration of Orp-Jauche. Two find concentrations were discovered less than 4 m apart (fig. 2), of which only Orp East will be discussed here. The results of the excavation have been published in detail by P. M. Vermeersch et al. (1984, 1987).

While some artefacts occurred in the plough horizon, the vast majority of the archaeological material from both concentrations was situated in the B2 horizon of the soil. Both concentrations were affected by gelifraction, but refitting of frost-cracked artefacts by the excavators indicated, especially in Orp East, that dispersal of material had taken place only over short distances. Vertical projection onto a south-north profile shows a distribution of finds within an even layer, indicative of undisturbed stratification (Vermeersch et al. 1987, fig. 4). The distinct distribution pattern of certain tools within the find concentration also rules out large scale disturbance.

### The chronological position of Orp East

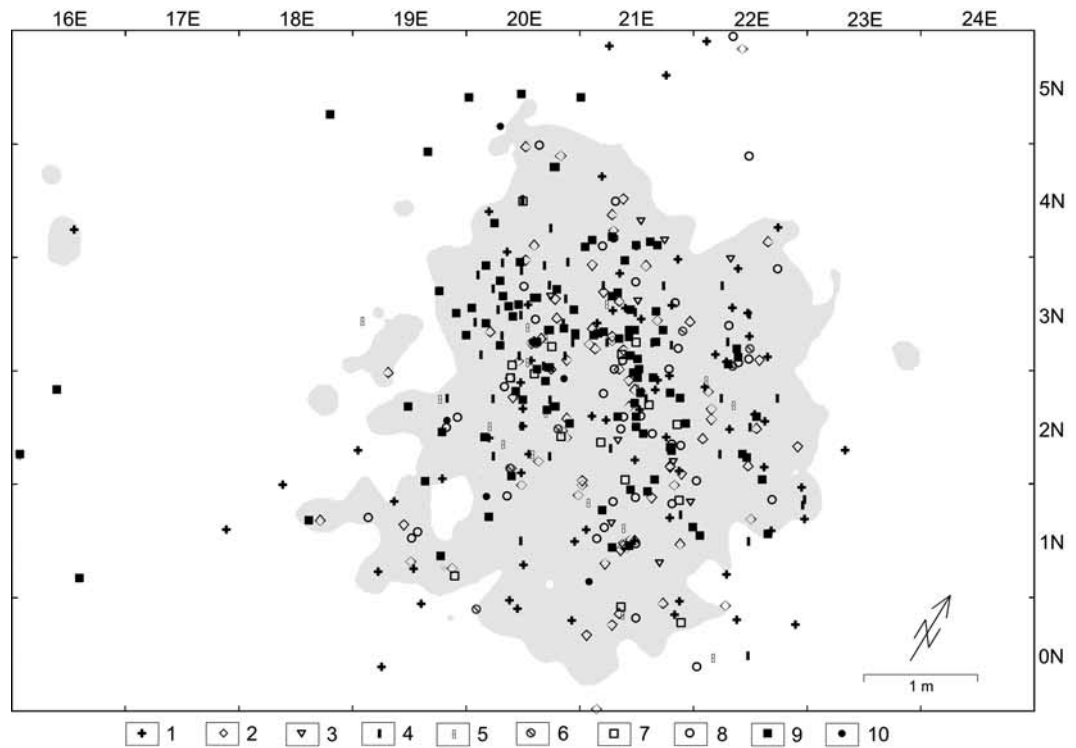
In both of the concentrations at the Orp site, blades were struck from large, carefully prepared blade cores. They often have striking platforms «en éperon» and there exist many well-produced bladelets from specialised cores. The inventory of tools is characterised by a large number of burins (including many Lacan burins), numerous blade end scrapers and a few truncations, becs / borers and backed bladelets (Vermeersch et al. 1987, 44). The similarity of the artefact inventory of the Orp sites to that of U5 unit at Étiolles has been noted and a possible contemporaneity has been proposed (Vermeersch / Maes 1996). Two TL-dates on heated flint from Orp West ( $13.3 \pm 1.1$  ka) and Orp East ( $12.2 \pm 0.8$  ka) respectively, and the  $^{14}\text{C}$  dates obtained for archaeological level N20 of Étiolles (with find concentrations U5 and P15) (Rodriguez/ Roblin-Jouve 2004, 29) do not contradict this assumption.



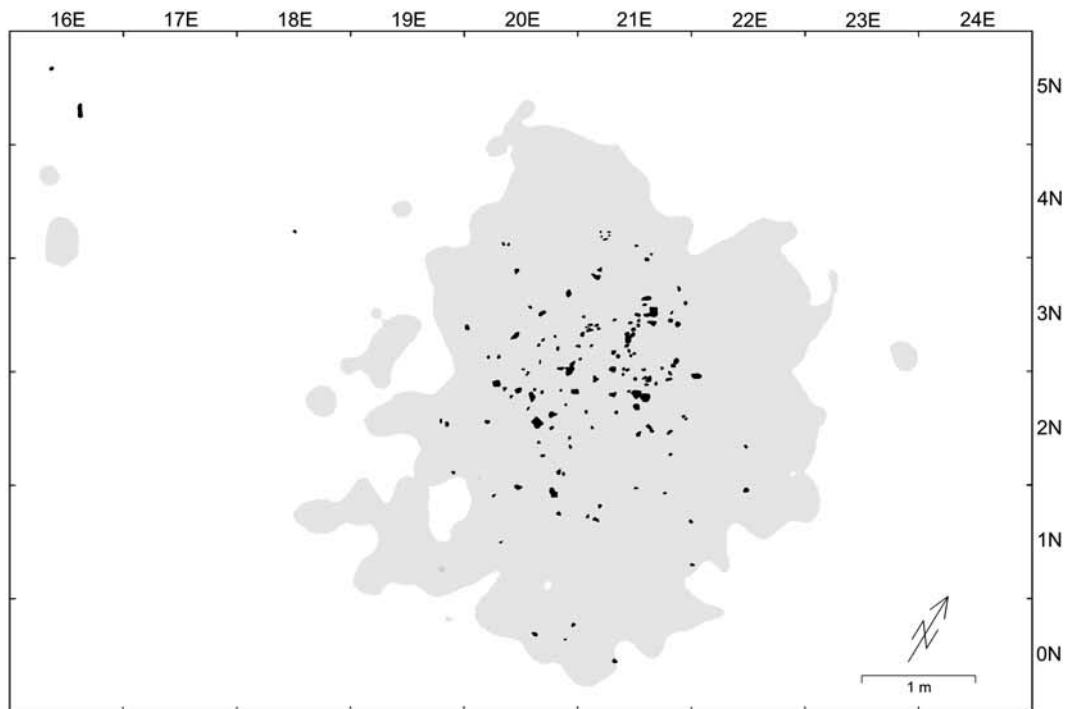
**Fig. 5** Orp East. Position of the hearths localised by P. M. Vermeersch et al. 1984, fig. 6, modified, on the basis of burnt finds (sandstone slabs: black; flint: open symbol). The hatched area shows the zone with the highest find density with reconstructed sections of the tent wall (hatched lines), based on the thin distribution of finds. The denomination of the fire places »A and B« follows Stapert 1989, fig. 13-14.

### Central U-shaped concentration of finds with hearths, depressions and pits

The most prominent feature of Orp East is the very dense, U-shaped concentration of finds at its centre (figs 2-4). This central part contains not only a vast accumulation of flint debitage, but also many sandstone slabs, most of which are burnt, and some thermally altered flint artefacts. P. M. Vermeersch et al. (1984) distinguished two accumulations of burnt material, one within each wing of the central area. These accumulations of burnt finds were interpreted as two separate hearths (fig. 5). The dense, central part of the find concentration displays two narrow zones, which are almost devoid of artefacts, and these were interpreted as indicating the wall of a tent. The main part of the dwelling was thought to be in the area with a thin distribution of artefacts, located to the east of the more north-easterly of the two hearths – hearth B. This interpretation was in accordance with the model of A. Leroi-Gourhan (Leroi-Gourhan / Brézillon 1972, fig. 174; Leroi-Gourhan, 1984) but was questioned by D. Stapert (1989, 13), who tested it with his »Ring and Sector method«. He chose the south-western hearth – hearth A – as the centre for measuring the ring distribution of Orp East, because of the presence of a small concentration of backed bladelets which in the context of hafting and retooling are routinely related to hearths. However, it was never suggested that hearth A was situated in a tent. In fact, neither of the two hearths can be identified as a central hearth within the settlement structure – an important prerequisite of Stapert’s method. The well preserved hearth (locus 46) of the evident dwelling of Le Closeau (Bodu 2000), which belongs to an early phase of the Final Palaeolithic (Azilian »bipointe« phase), inspired a reappraisal of the hearths of Orp East. At Le Closeau, locus 46 is located within an extended working zone, which is nothing more than a mass

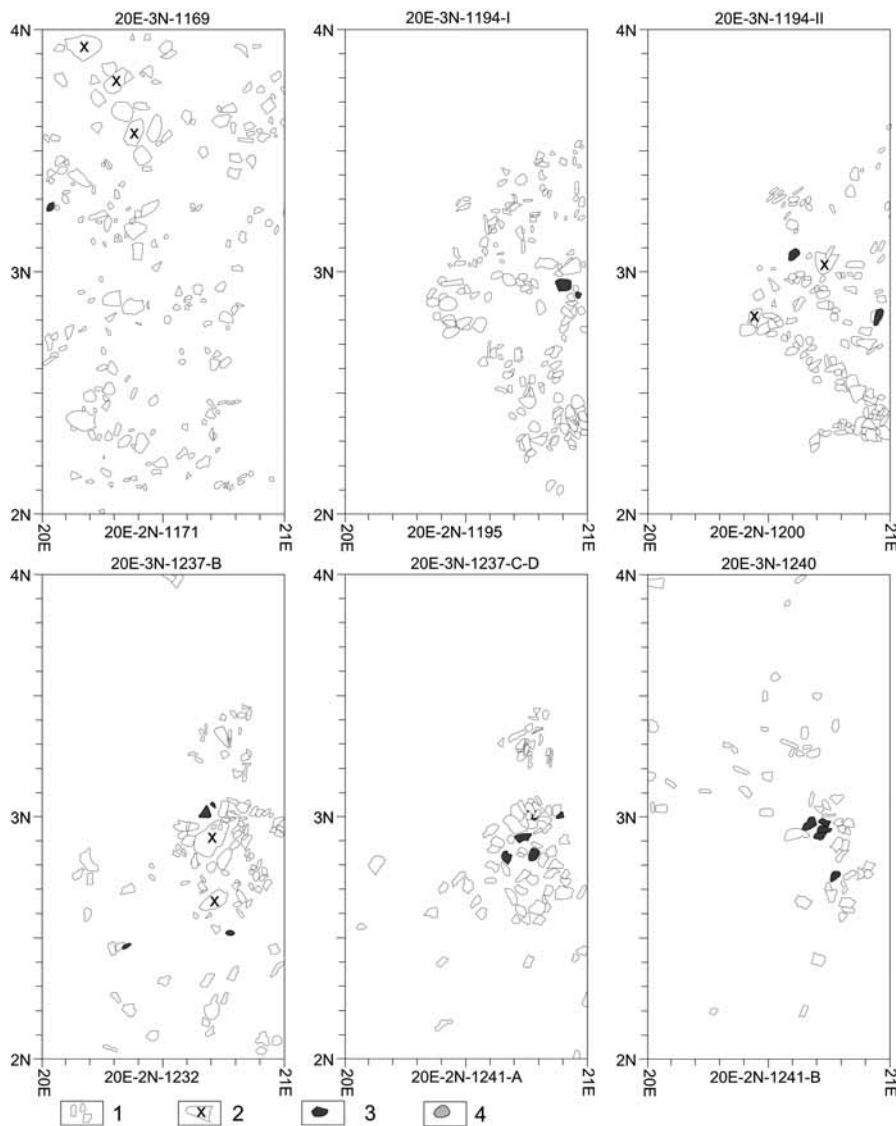


**Fig. 6** Orp East. Horizontal distribution of all three dimensionally recorded tools: – 1 scrapers; – 2 burins; – 3 becs/borer; – 4 backed bladelets; – 5 notched pieces; – 6 composite tools; – 7 truncated pieces; – 8 laterally retouched pieces; – 9 cores; – 10 hammer stones. Underlain is the plot of the smallest indicated find density class of fig. 3. The position of these artefacts was taken from Vermeersch et al. 1987, fig. 34, except for burins and cores.



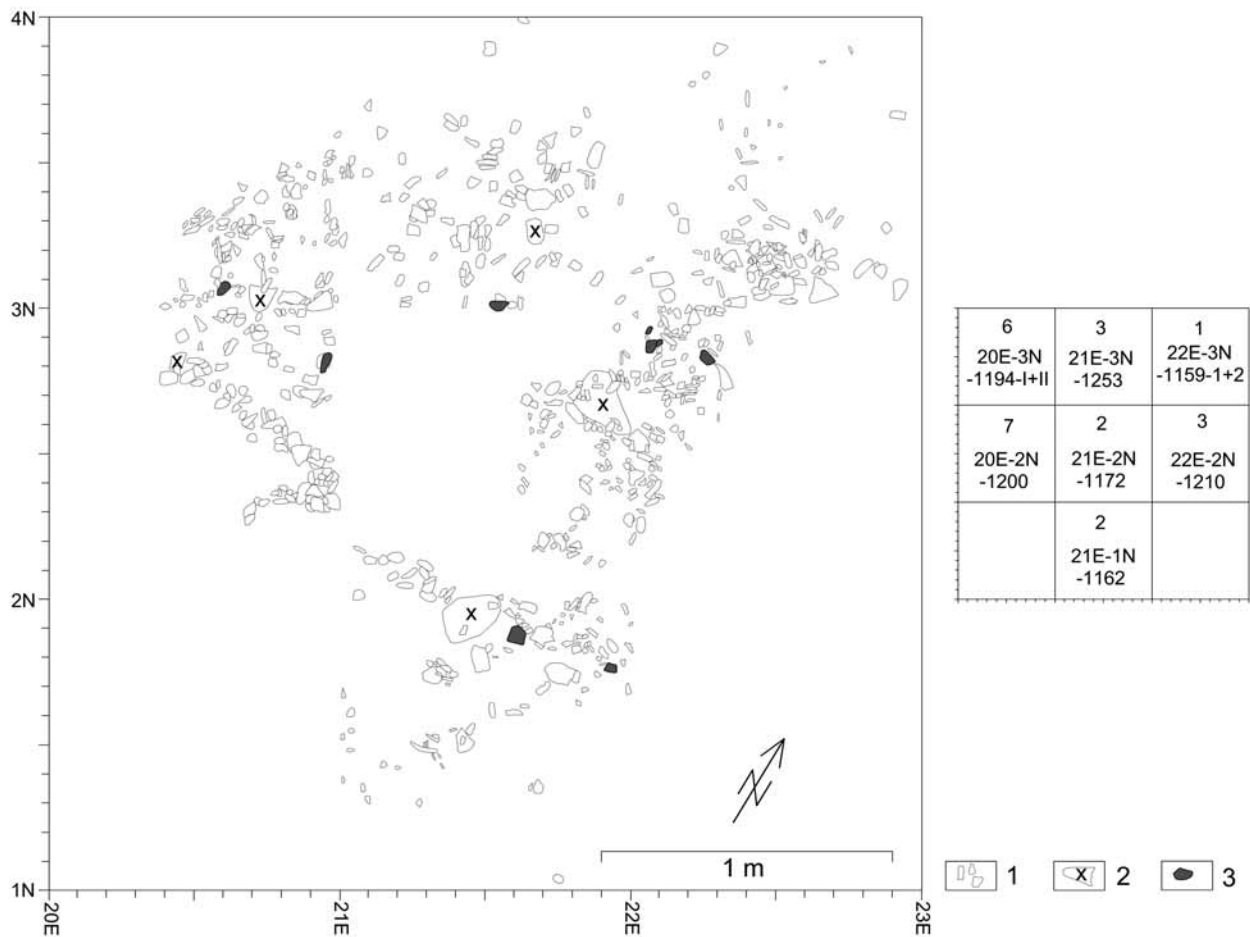
**Fig. 7** Orp East. Horizontal distribution of all pieces of burnt flint recorded three dimensionally. Underlain is the plot of the smallest indicated find density class of fig. 3. Position of the thermally altered flint after Vermeersch et al. 1987, fig. 31.





**Fig. 8** Orp East. Horizontal distribution of finds in the western part of the central area of the find concentration (=area of features 3 and 4). Selected redrawing of the excavation plans which were combined according to their succession within the squares. The sediment was not removed in spits of a pre-defined thickness but in more or less thin strata with 99 finds per number of spit and drawing sheet according to find density. Nevertheless it is still possible to follow the stratification of finds. – **1** flint artefacts; – **2** cores; – **3** pieces of sandstone and quartzite; – **4** flint hammer stone. – Scale ca. 1:30.

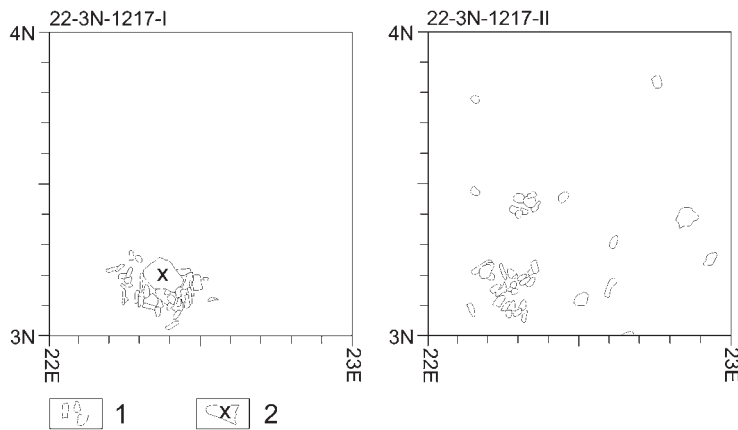
of artefacts and bones mixed with burnt material from the hearth. The actual hearth at the centre of this concentration of waste contains only a few finds (Bignon 1998, fig. 3). The central area of Orp East apparently represents a similar structure and the relatively thin distribution of finds in the middle may be regarded as the place of the hearth. The thin distribution of finds is particularly visible in the distribution map of tools and cores (fig. 6). The area of hearth B of Vermeersch and co-authors is similar, being surrounded by pieces of burnt flint and is relatively poor in finds (fig. 7). In view of the similarity of this feature, there may have been an additional, smaller, hearth just about half a metre north-east of the large one (Wenzel 2005), and there may have been a »central complex of fire places« as in Concentration IIa of Gönnersdorf (Sensburg 2004, 71 fig. 32; 2007). The hearth located around 21E-3N seems to have been the dominant installation. The find-rich zone in the central hearth contained so many artefacts that numerous excavation



**Fig. 9** Orp East. Horizontal distribution of finds in the central part of the find concentration, below the layer with the highest find density. Redrawing of the excavation plans. To the right are the number of the spits and the numbers of the drawing sheets. – **1** flint artefacts, – **2** cores, – **3** sandstone slabs. – Scale ca. 1:25.

plans were required in order to document them in inventory units of 99 single finds for each plan. Linear accumulations of finds became visible with increasing depth, forming the boundaries of a flat depression of irregular quadrilateral form, measuring 1.3m in length and 1.6m in width (figs 8-9).

Four features in the form of small concentrations of finds below the main find horizon appeared close to the two hearths. Two concentrations, located to the west of the hearth, were shallow depressions. The other two concentrations, situated to the north and the east of the hearth, measured 20-30cm in diameter with depths of at least 10cm (figs 10-11). They were not identified due to ochre-staining, but because of their fill of artefacts. However, they are similar in size to some pits from the Magdalenian sites of Gönnersdorf (Bosinski 1979; Terberger 1997), Andernach (Bergmann / Holzkämper 2002; Holzkämper 2006), Nebra (Mania 1999) and Monruz (Leesch / Plumettaz / Bullinger 2006, Fig. 40).

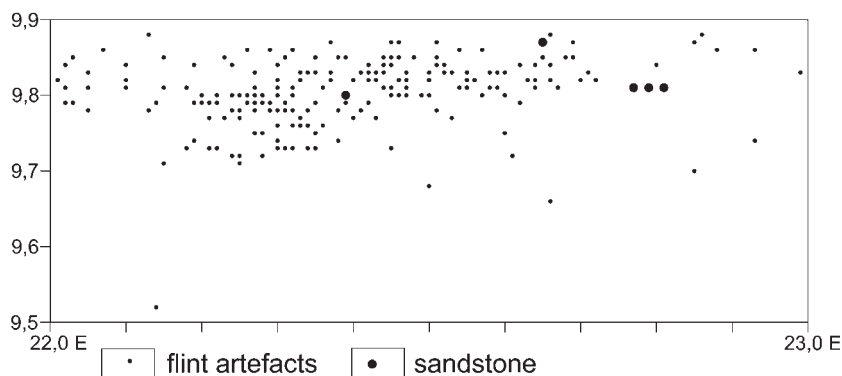


**Fig. 10** Orp East. Horizontal distribution of finds in the lowest spit in the area of feature 1. – 1 flint artefacts, – 2 cores. – Scale 1:25.

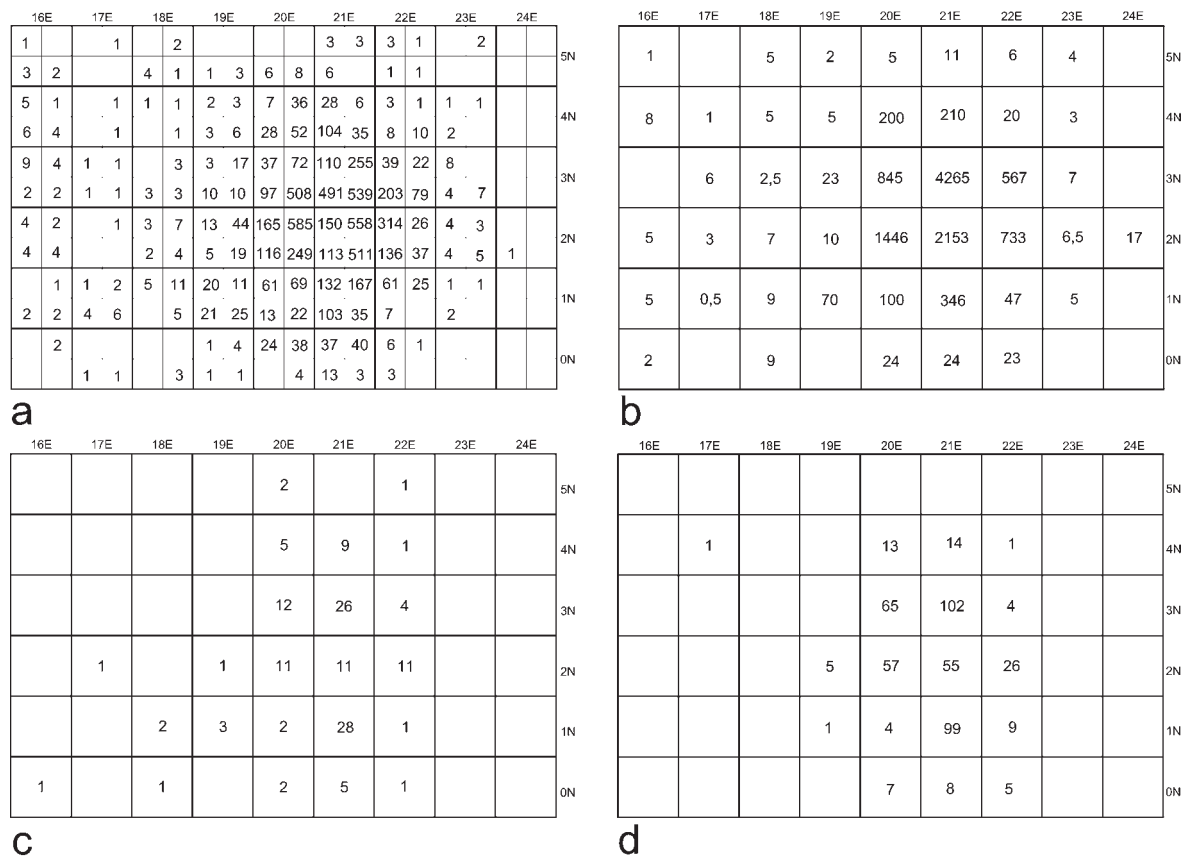
### Boundaries and barriers – re-examining a possible dwelling

Outside of the central part with hearth and working zone, there is a compact concentration of finds at Orp East. The number of individually recorded flint artefacts decreases from greater than twenty per  $\frac{1}{4}$  m<sup>2</sup> to less than ten in most parts of the peripheral areas (fig. 12). Isopachs of find density reflect this situation and follow each other at short intervals (fig. 13). On the eastern side of the concentration, where the distance between the isopachs is not so small, there is a gap between the outermost find density line and the other isopachs, which are more equally spaced. This too seems to indicate a marked decrease in find density. Recording the number of artefacts per  $\frac{1}{4}$  m<sup>2</sup> in transects displays a decrease even in the low number of artefacts at the western boundary of the concentration. However, there is also evidence of increasing and decreasing numbers of artefacts at the southern boundary, indicative of a former obstacle where the artefacts accumulated.

The compact distribution of the stone artefacts is also revealed by density plots of all artefacts recorded in three dimensions, displayed using Nearest Neighbour for discrete data (figs 3-4). By assigning the overall numbers of artefacts to the centre of grid cells, this method of plotting has the advantage of not blurring structures. It therefore shows clearly the zones where artefact density increases towards the boundary in the south-western part of the find concentration. Within these zones the artefacts are often in a straight alignment (fig. 2).



**Fig. 11** Orp East. Vertical distribution of finds in the area of feature 1. Projection of finds recorded individually from the quarter square metres 22E-3N c-d to the profile 22E-3N-23E-3N. – Scale 1:12.5.



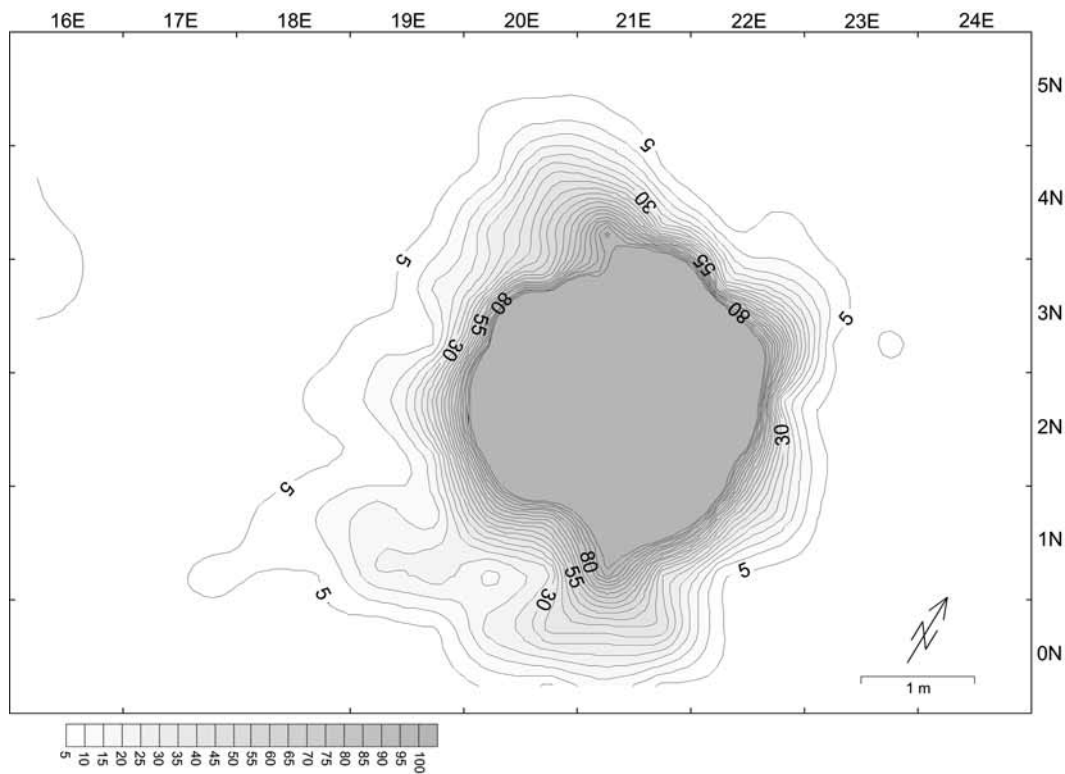
**Fig. 12** Orp Ost. – **a** number of all individually recorded flint artefacts per ¼m²; – **b** weight of flint chips per 1 m² (g); – **c** number of burins per 1 m²; – **d** number of burin spalls per 1 m². – («b» from Vermeersch et al. 1987, fig. 7; raw data for a section of the map).

Tools and cores are abundant in the central part of the find concentration, but a considerable number of these artefacts is also found at the periphery (fig. 6). Those areas rich in larger objects are separated by a zone with a lower density of these kinds of finds. Only a few tools and cores are found outside the find concentration. Delimitation in the sense of a barrier must have been effective. The edges of the find concentration are also accentuated by several refit lines which terminate there (fig. 14).

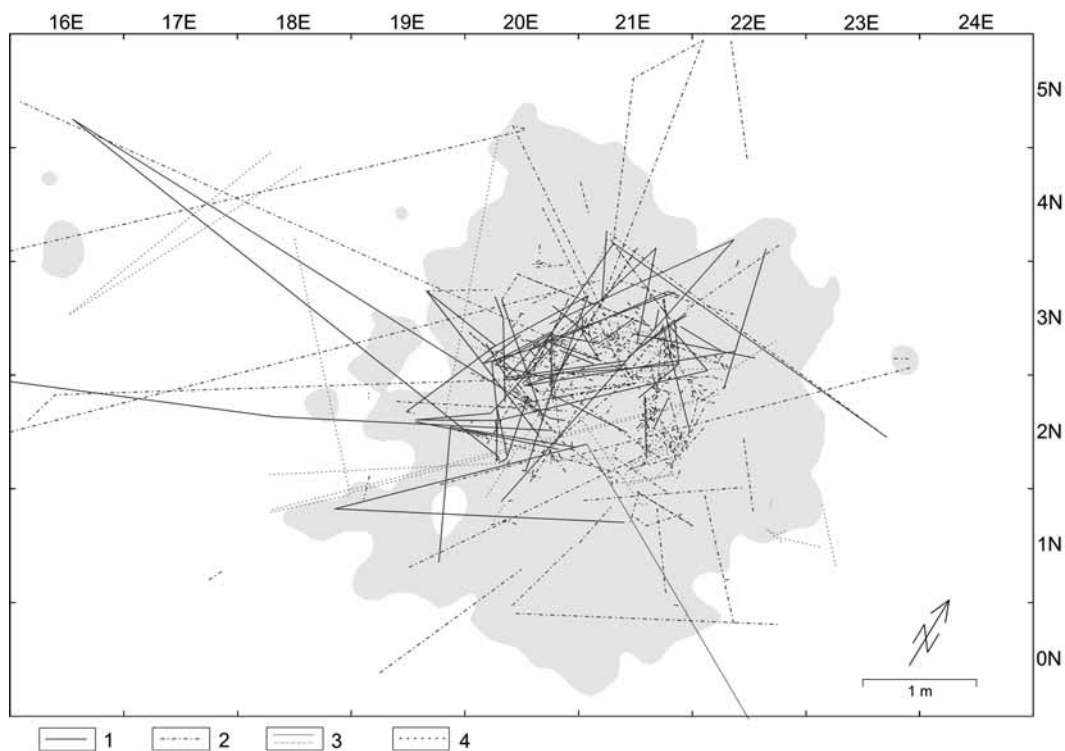
Altogether, the find densities, the distribution of larger objects at the boundary and the lines of refits emphasizing the boundary define a zone which was formerly clearly spatially delimited and thus suggestive of a dwelling. The dwelling had a hexagonal ground plan 4.5m in length and maximally 3.8m in breadth (fig. 15). Since a type of barrier seems to be especially evident in the southern/south-eastern part of the find concentration an entrance may have been located close to this area (Stapert 1989, 20). So far this theory has not been proven by refitting.

### The inner organization of Orp-East

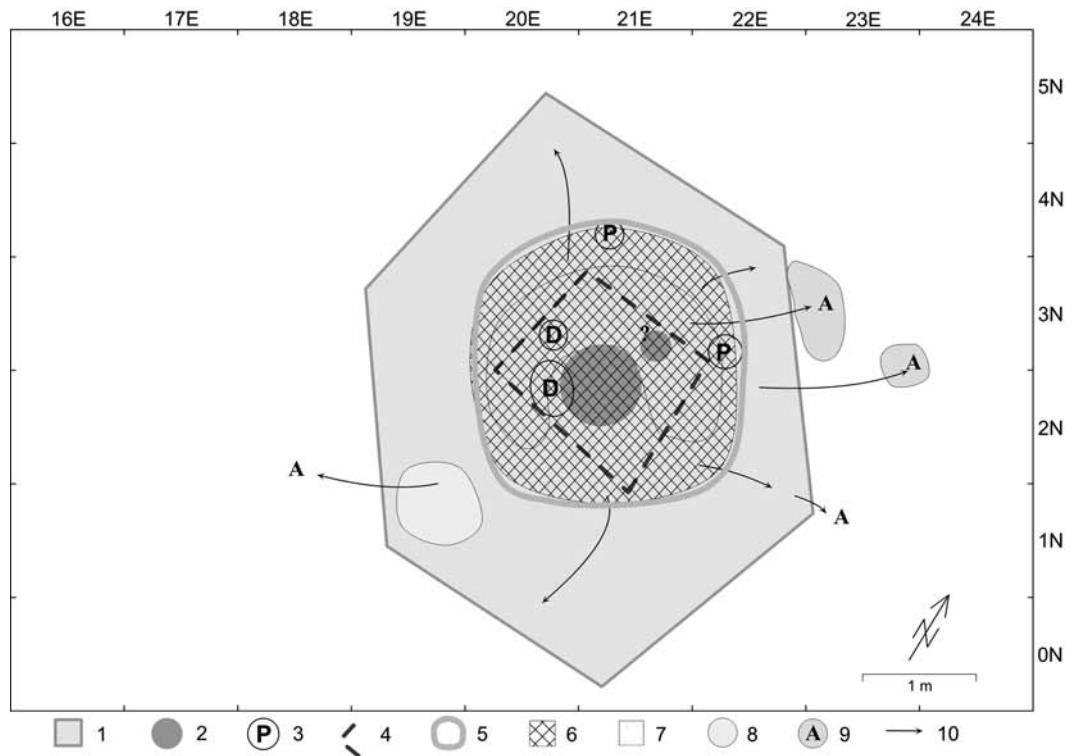
The excavators already noted the different distributions of backed bladelets, scrapers, burins and burin spalls within the find concentration (Vermeersch et al. 1987, 50). However, several other classes of arte-



**Fig. 13** Orp East. Isopachs of all individually recorded artefacts mapped in equidistant groups with Surfer gridded by Kriging. All groups with more than 100 artefacts were united and a small distance was chosen in order to evaluate the periphery of the concentration.



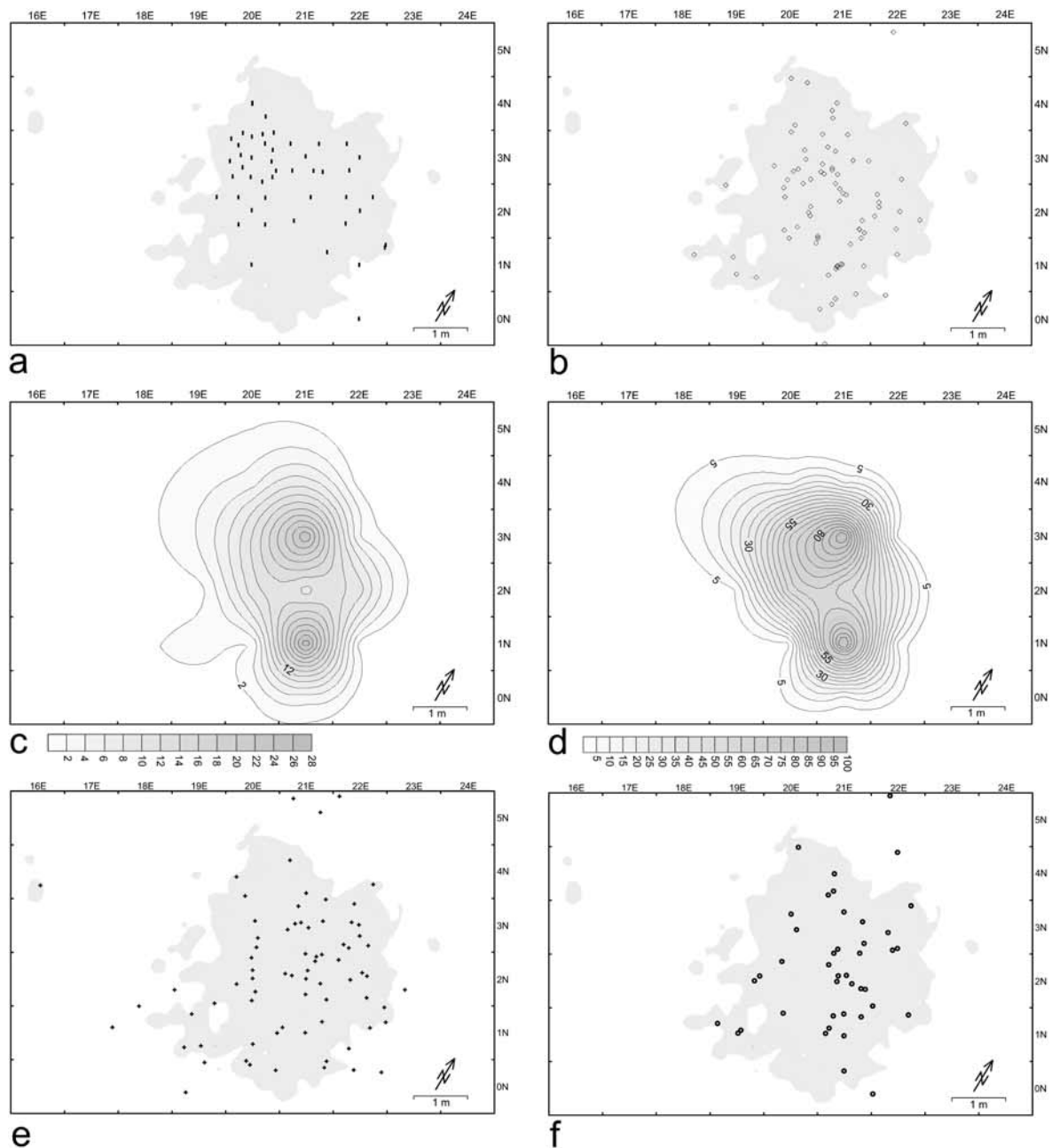
**Fig. 14** Orp East. Horizontal distribution of refit lines: – **1** flaking sequences; – **2** broken artefacts; – **3** refits between flaking sequences/broken artefacts of finds which were not recorded individually; – **4** refits between burnt flints and sandstones. Underlain is the plot of the smallest indicated find density class of **fig. 3**. – (Refits combined and slightly modified after Vermeersch et al. 1987, fig. 31 and 33).



**Fig. 15** Interpretation of Orp East. – 1 idealized ground plan of the tent; – 2 reconstructed fire places; – 3 pits/depressions; – 4 slightly deepened area; – 5 find-rich zones around the central hearth; – 6 zone of activity around the hearth; – 7 drop zone; – 8 areas from which material was cleared away; – 9 accumulations of stones and artefacts; – 10 supposed direction of clearing activities.

facts also show a differentiated horizontal distribution. The backed bladelets are mainly concentrated in square 20E-3N, in the north-western corner of the central working zone (fig. 16 a), while the majority of the scrapers (and also of the laterally retouched pieces) is to be found to the south-east of the small cluster of backed bladelets (figs 16 e-f). Burins and burin spalls have two separate concentrations in the north-western and south-eastern corners of the central working and waste zone (figs 16 b-d). There is a small accumulation of burins (especially Lacan burins) and burin spalls in square 21E-1N. Becs/borers are located in two separate groups within the eastern half of the find concentration (fig. 17 a). In contrast to other tool types, the distribution of truncated pieces and notched pieces is more clearly related to the area around the central hearth (figs 17 b-c).

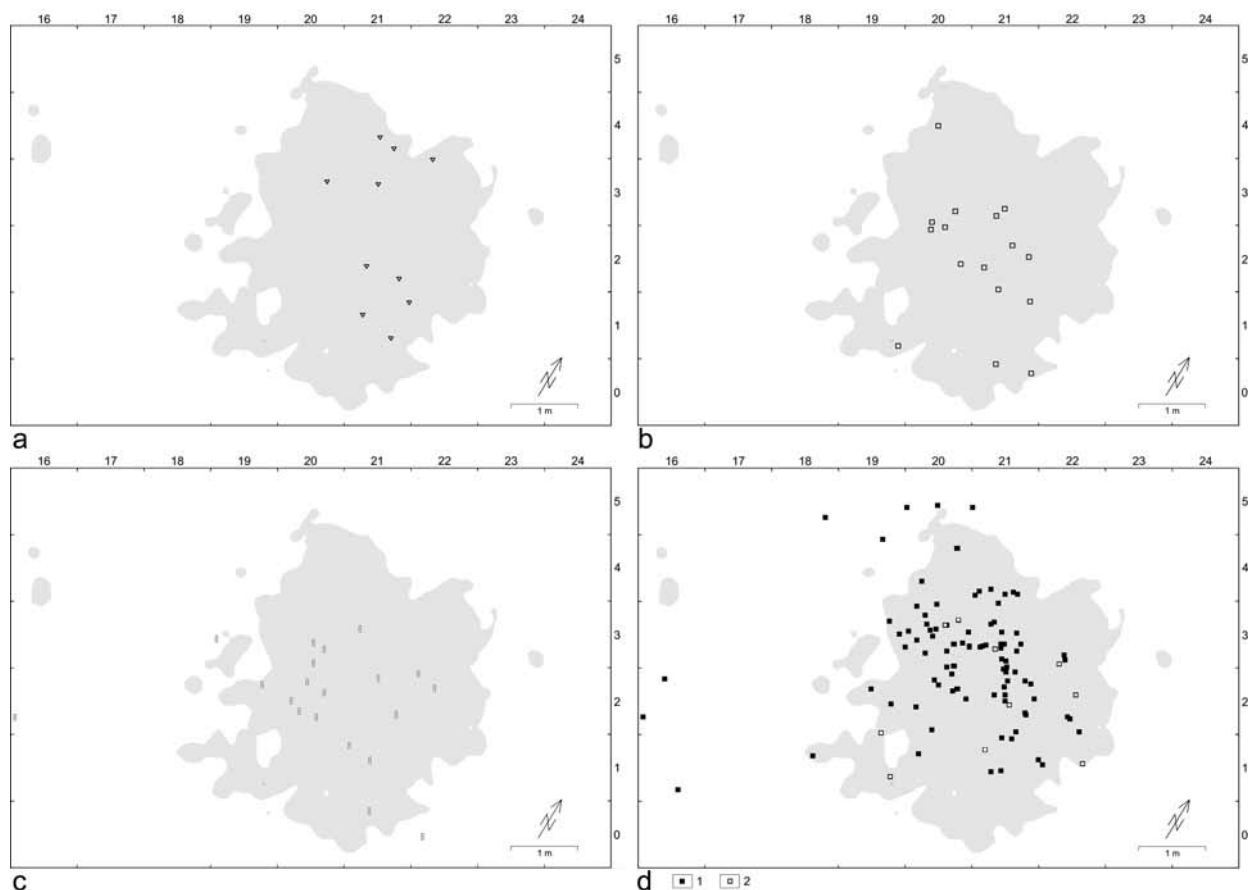
Cores and debitage are abundant at Orp East. Flint knapping appears to have been a major activity in the supposed tent, which was also the case in Étioles W11 (Julien et al. 1988). The cores are not only confined to the central working zone; there is also a considerable number of them in the northern/north-western half of the tent (fig. 17 d). Bladelet cores are mainly distributed in the eastern/south-eastern half, and have a distribution pattern similar to that of the scrapers, becs/borers and laterally retouched pieces. Cores are not as well represented in peripheral areas, in contrast to several other categories of artefacts. This may indicate that the knapping of a greater part of the flint was done only briefly before abandoning the dwelling.



**Fig. 16** Orp East. Horizontal distribution of tools. – **a** backed bladelets; – **b** burins; – **c** isopachs of all burins per 1 m<sup>2</sup> mapped in equidistant groups with Surfer, gridded by Kriging; – **d** isopachs of all burin spalls per 1 m<sup>2</sup> mapped in equidistant groups with Surfer, gridded by Kriging; – **e** scrapers; – **f** laterally retouched pieces. For a-b, e-f is the mapping of the smallest indicated find density class of **fig. 3** underlaid.

## Results and outlook

At Orp East the find concentration is hexagonal in shape and measures some 4.5m in length and approximately 3.8m wide. Arguments for the interpretation of this structure as a dwelling are provided by the density of finds, the distribution of larger objects at the periphery of the find scatter and refit lines which define a formerly spatially delimited zone.



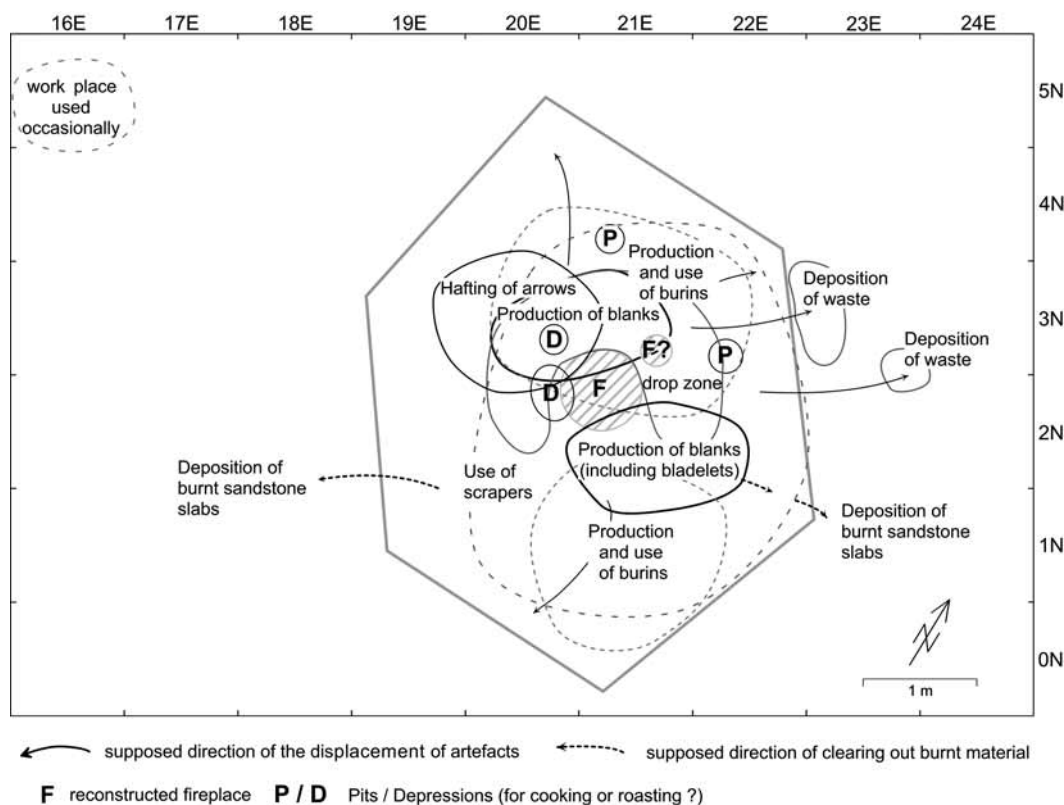
**Fig. 17** Orp East. Horizontal distribution of tools and cores. – **a** becs/borers; – **b** truncated pieces; – **c** notched pieces; – **d** cores (1) and bladelet cores (2). For a-d the mapping of the smallest indicated find density class of fig. 3 is overlaid.

The dwelling feature had a central hearth with an extended working zone situated in an intentionally deepened area. This central hearth was possibly accompanied by a smaller, neighbouring hearth to the north-east. Two shallow depressions and two pit-like features were also located within the extended working zone. The zone of activity around the central hearth is very rich in finds and spatially confined.

The reconstructed dwelling of Orp East is slightly smaller than many evident and latent dwellings described for the Magdalenian and the Federmessergruppen (Jöris / Terberger 2001; De Bie / Caspar 2000; Gelhausen / Kegler / Wenzel 2004; Grimm 2004), but shares features with these dwellings, such as a clearly defined area with a high density of finds around the hearth, and partitioning into activity zones defined by the distribution of different tool types (fig. 18). These activity zones overlap and form two groups NW and SE of the central fire place. They can be interpreted as separate places of work. The spectrum of activities documented at each work place is similar in many features, but differs in detail so that the activity zones can be regarded as complementary to each other.

In this respect Orp East is the same as several other find concentrations of similar size dating from the Late Upper Palaeolithic to the Mesolithic, where complementary working places are located opposite each other, such as Niederbieber I (Bulus 1992, figs. 139. 141. 144; Gelhausen / Kegler / Wenzel 2005, 6), Nieder-





**Fig. 18** Orp East. Reconstruction of activity areas based on the distributions of stone artefacts and debitage of stone artefact production.

bieber IV (Gelhausen / Kegler / Wenzel 2005, 6; Gelhausen 2007), Cepoy (Wenzel / Jagu 2010), Barbing (Reisch 1974, 69) or next to each other, as Ulkestrup II (Grøn 1995, figs 13-14; Wenzel 2009, fig. 5), Geldrop 3-2 (Bohmers / Wouters 1962, supplement; Wenzel 2009, fig. 104) and Hartmannsdorf 26-1 (Wenzel 1999; Wenzel 2009, fig. 124).

The activity zones of the find concentrations mentioned above testify to the emphasis placed on different activities, where certain artefact types were not restricted to only one work place. The wide distribution of particular tool types may be due to clearing activities, to the fact that most activities were not gender-related (Janes 1983, 71) and because work areas may have been multi-functional (Janes 1983, 79; Binford 1984, 194). However, these find concentrations with a central hearth contain only one particularly prominent accumulation of projectile points, and combinations of work areas are not repeated within one of these concentrations. If one actually assumes that the activity »preparation of hunting weapons« was done by men (Grøn 1995, 53) and in addition, in each case, a »complementary« work place exists where different tasks were performed, then it seems plausible to interpret the find concentrations concerned as remnants of the (perhaps repeated) stay of a nuclear family.

## Acknowledgements

I wish to thank Prof. Dr. P.M. Vermeersch and Prof. Dr. Ph. van Peer for permission to work with the finds and the documentation of Orp East in the Laboratorium voor Prehistorie of K.U. Leuven, and Mr. Ludo Cleeren for practical help. Valuable technical advice on using Surfer and ArcGIS came from Dr. Martina Sensburg, Dr. Olaf Jöris and Frank Moseler, all Neuwied. I'm grateful for discussions with them and with Sylvie Bergmann, Dr. Frank Gelhausen, Jan F. Kegler and Dr. Martin Street. I would like to thank the Deutsche Forschungsgemeinschaft for financing a project which focuses on Palaeolithic dwelling structures (WE2856/1-2).

## References

- Bergmann / Holzkämper 2002: S. Bergmann / J. Holzkämper, Die Konzentration IV des Magdalénien von Andernach-Martinsberg, Grabung 1994-1996. *Archäologisches Korrespondenzblatt* 32, 2002, 471-486.
- Bignon 1998: O. Bignon, Analyse spatiale de la faune du niveau à Federmesser ancien. In: P. Bodu (ed.), *Le Closeau. Deux années de fouille sur un gisement azilien et belloisien en bord de Seine, Rueil-Malmaison (Hauts-de-Seine)*. Document final de synthèse de sauvetage urgent. Tome III (Saint Denis, Paris 1998) 411-421.
- Binford 1984: L. R. Binford, *Die Vorzeit war ganz anders. Methoden und Ergebnisse der Neuen Archäologie* (München 1984).
- Bodu 2000: P. Bodu, Que sont devenus les Magdaléniens du Bassin parisien? Quelques éléments de réponse sur le gisement azilien du Closeau (Rueil-Malmaison, France). In: B. Valentin / P. Bodu / M. Christensen (eds), *L'Europe centrale et septentrionale au Tardiglaciaire. Actes de la Table-ronde internationale de Nemours 1997. Mémoires du Musée de Préhistoire d'Île-de-France* 7 (Nemours 2000) 315-339.
- Bohmers / Wouters 1962: A. Bohmers / A. M. Wouters, Belangrijke vondsten van de Ahrensburgcultuur in de gemeente Geldrop. *Brabants Heem* 14, 1962, 3-28.
- Bolus 1992: M. Bolus, Die Siedlungsbefunde des späteiszeitlichen Fundplatzes Niederbieber (Stadt Neuwied). *Ausgrabungen 1981-1988. Monogr. RGZM 22* (Bonn 1992).
- Bosinski 1979: G. Bosinski, Die Ausgrabungen in Gönnersdorf 1968-1976 und die Siedlungsbefunde der Grabung 1968. *Der Magdalénien-Fundplatz Gönnersdorf 3* (Wiesbaden 1979).
- De Bie / Caspar 2000: M. De Bie / J.-P. Caspar, Rekem. A Federmesser Camp on the Meuse River Bank. *Acta Archaeologica Lovaniensia Monographiae* 10 (2 vol.) (Leuven 2000).
- Faegre 1979: T. Faegre, *Tents. Architecture of the nomads* (Garden City, New York 1979).
- Gelhausen 2007: F. Gelhausen, Untersuchungen zum Siedlungsmuster der allerødzeitlichen Federmessergruppen in Niederbieber, Stadt Neuwied, Rheinland-Pfalz [Ph.D.-thesis, University of Cologne 2007].
- Gelhausen / Kegler / Wenzel 2004: F. Gelhausen / J. F. Kegler / S. Wenzel, Latent dwelling structures in the Final Palaeolithic: Niederbieber IV, Andernach-Martinsberg 3, *Berlin-Tegel IX. Notae Praehistoricae* 24, 2004, 69-79.
- Gelhausen / Kegler / Wenzel 2005: F. Gelhausen / J. F. Kegler / S. Wenzel, Hütten oder Himmel? Latente Behausungsstrukturen im Spätpaläolithikum Mitteleuropas. *Jahrb. RGZM* 51, 2004 (2005), 1-22.
- Grimm 2004: S. B. Grimm, Ein spätallerödzeitlicher Fundplatz bei Bad Breisig, Kr. Ahrweiler. *Berichte zur Archäologie an Mittelrhein und Mosel* 9. *Trierer Zeitschrift, Beiheft* 28 (Trier 2004) 11-32.
- Grøn 1995: O. Grøn, The Maglemose Culture. The reconstruction of the social organization of a mesolithic culture in Northern Europe. *BAR Int. Ser.* 616 (Oxford 1995).
- Grøn / Kutsnetsow / Klokkernes 2003: O. Grøn / O. Kutsnetsow / T. Klokkernes, Begegnungen mit der Steinzeit. *Archäologie in Deutschland* 19(6), 2003, 14-19.
- Holzkämper 2006: J. Holzkämper, Die Konzentration IV des Magdalénien von Andernach-Martinsberg, Grabung 1994-1996 [Ph.D.-thesis, University of Cologne 2006].
- Janes 1983: R. R. Janes, *Archaeological ethnography among Mackenzie Basin Dene, Canada*. The Arctic Institute of North America Technical Paper No. 28 (Calgary 1983).
- Jöris / Terberger 2001: O. Jöris / Th. Terberger, Zur Rekonstruktion eines Zeltes mit trapezförmigem Grundriß am Magdalénien-Fundplatz Gönnersdorf / Mittelrhein – eine »Quadratur des Kreises«? *Archäologisches Korrespondenzblatt* 31, 2001, 163-172.
- Julien et al. 1988: M. Julien / F. Audouze / D. Baffier / P. Bodu / P. Coudret / F. David, G. Gaucher / C. Karlin / M. Larrière / P. Masson / M. Olive / M. Orliac / N. Pigeot / J. L. Rieu / B. Schmitter / Y. Taborin, *Organisation de l'espace et fonction des habi-*

- tats magdaléniens du Bassin Parisien. In: M. Otte (ed.), De la Loire à l'Oder. Les civilisations du Paléolithique final dans le nord-ouest européen. Actes du Colloque de Liège I, 1985, BAR Int. Ser. 444 (Oxford 1988) 85-123.
- Leesch / Plumettaz / Bullinger 2006: D. Leesch / N. Plumettaz / J. Bullinger, Présentation générale du niveau d'habitat. In: J. Bullinger / D. Leesch / N. Plumettaz (eds), Le site magdalénien de Monruz. Premiers éléments pour l'analyse d'un habitat de plein air. Archéologie neuchâteloise 33, Service et musée cantonal d'archéologie de Neuchâtel (Neuchâtel / Hauteville 2006) 35-43.
- Leroi-Gourhan 1984: A. Leroi-Gourhan, Pincevent. Campement magdalénien de chasseurs de rennes. Guides archéologiques de la France 3 (Paris 1984).
- Leroi-Gourhan / Brézillon 1972: A. Leroi-Gourhan / M. Brézillon, Fouilles de Pincevent. Essai d'analyse ethnographique d'un habitat magdalénien (la section 36). VII<sup>ème</sup> supplément à Gallia Préhistoire (Paris 1972).
- Mania 1999: D. Mania, Nebra - eine jungpaläolithische Freilandstation im Saale-Unstrut-Gebiet. Veröffentlichungen des Landesamtes für Archäologie Sachsen-Anhalt 54 (Halle/Saale 1999).
- McFadyen Clark 1996: A. McFadyen Clark, Who lived in this house? A study of Koyukuk River semi-subterranean houses. Mercury Series, Paper No. 153, Archaeological Survey of Canada (Hull, Quebec 1996).
- Nabokov / Easton 1989: P. Nabokov / R. Easton, Native American architecture (Oxford, New York 1989).
- Ränk 1951: G. Ränk, Das System der Raumeinteilung in den Behausungen der nordeurasischen Völker. Ein Beitrag zur nordeurasischen Ethnologie, II. Teil. Skrifter utgivna av Institutet för Folklivforskning vid Nordiska Museet och Stockholms Högskola 3 (Stockholm 1951).
- Reisch 1974: L. Reisch, Eine spätjungpaläolithische Freilandstation im Donautal bei Barbing, Ldkr. Regensburg. Quartär 25, 1974, 53-71 mit pl. V.
- Rodriguez / Roblin-Jouve 2004: P. Rodriguez / A. Roblin-Jouve, Environnement et cadre chronologique de l'implantation magdalénienne. (Avec la collaboration de Julia Wattez et Christine Oberlin). In: N. Pigeot, Les derniers magdaléniens d'Étiolles: Perspectives culturelles et paléohistoriques. XXXVII<sup>ème</sup> supplément à Gallia Préhistoire (Paris 2004) 19-30.
- Sensburg 2004: M. Sensburg, Die Siedlungsstrukturen der Konzentration IIa von Gönnersdorf [unpublished Ph. D.-thesis, University of Cologne 2004].
- 2007: M. Sensburg, Die räumliche Organisation der Konzentration IIa von Gönnersdorf. Monogr. RGZM 69 (Mainz 2007).
- Stapert 1989: D. Stapert, The Ring and Sector method: intrasite spatial analysis of Stone Age sites with special reference to Pincevent. Palaeohistoria 31, 1989, 1-57.
- Terberger 1997: T. Terberger, Die Siedlungsbefunde des Magdalénien-Fundplatzes Gönnersdorf. Konzentrationen III und IV. Der Magdalénien-Fundplatz Gönnersdorf 6 (Stuttgart 1997).
- Vermeersch et al. 1984: P. M. Vermeersch / R. Lauwers / H. van Heyning / P. Vyncker, A Magdalenian open air site at Orp, Belgium. In: H. Berke / J. Hahn / C.-J. Kind (eds.), Jungpaläolithische Siedlungsstrukturen in Europa, Kolloquium 8.-4. Mai 1983 Reisenburg / Günzburg. Urgeschichtliche Materialhefte 6 (Tübingen 1984) 209-219.
- Vermeersch / Maes 1996: P. M. Vermeersch / M. Maes, Chronostratigraphy of the Magdalenian at Orp. Notae Praehistoricae 16, 1996, 87-90.
- Vermeersch et al. 1987: P. M. Vermeersch / N. Symens / P. Vyncker / G. Gijssels / R. Lauwers, Orp, site Magdalénien de plein air (comm. de Orp-Jauche). Archaeologica Belgica 3, 1987, 7-56.
- Wenzel 1999: S. Wenzel, Vorbericht über die Ausgrabung des mesolithischen Fundplatzes Hartmannsdorf 26, Fläche 1. In: E. Cziesla / Th. Kersting / S. Pratsch (eds), Den Bogen spannen ... Festschrift für Bernhard Gramsch zum 65. Geburtstag, Teil 1 (Weißbach 1999) 247-258.
- 2005: S. Wenzel, Orp East: indications for a dwelling. Notae Praehistoricae 25, 2005, 83-90.
- 2009: S. Wenzel, Behausungen im Späten Jungpaläolithikum und im Mesolithikum in Nord-, Mittel- und Westeuropa. Monogr. RGZM 81 (Mainz 2009).
- Wenzel / Jagu 2010: S. Wenzel / D. Jagu, L'habitat autour du foyer T5/T6 dans le gisement du Magdalénien final de Cepoy (Loiret, France). In: M. Połtowicz-Bobak / D. Bobak (eds), The Magdalenian in Central Europe. New finds and concepts. Colloque Rzeszów 2005. Fundacja Rzeszowskiego Ośrodka Archeologicznego Instytut Archeologii Uniwersytetu Rzeszowskiego SKAM – Flintreaders Society, Collectio Archaeologica Ressoiviensis, Tomus XV (Rzeszów 2010) 71- 83.

## *Abstract*

### **The Magdalenian dwelling of Orp East (Belgium) and its spatial organization**

At Orp East the find concentration has a hexagonal shape, is 4.5m in length and has a maximum width of 3.8m. Its boundaries are marked by a clear decrease in find density or by an increase of find quantities per unit in connection with a clear decrease of numbers of finds externally. The boundaries of the find concentration are accentuated by numerous tools and cores which accumulated there, and by several refitting lines which terminate at the boundary. These indications for formerly effective limits to the find concentration are interpreted as showing the presence of a dwelling. The dwelling had a central hearth with an extended working zone, which is extremely rich in debitage, cores and tools and is spatially strictly confined. The area of this hearth has been deepened in a systematic manner, and it has straight edges. The central hearth was possibly accompanied by a smaller fireplace nearby and by shallow pits and depressions. There are two distinct working zones in the NW and SE halves of the presumed dwelling.

## *Key words*

Upper Palaeolithic / Magdalenian / dwellings / artefact density / refits of artefacts



# CONTENTS

<i>Sabine Gaudzinski-Windheuser · Olaf Jöris · Martina Sensburg · Martin Street · Elaine Turner</i> Foreword .....	1
<i>Philip R. Nigst · Walpurga Antl-Weiser</i> Intrasite spatial organization of Grub/Kranawetberg: Methodology and interpretations. Insights into the spatial organization of Gravettian sites in Eastern Central Europe .....	11
<i>Pablo Arias · Roberto Ontañón · Esteban Álvarez-Fernández · Marián Cueto · Mikel Elorza Cristina García-Moncó · Alexandra Güth · María-José Iriarte · Luis C. Teira · Débora Zurro</i> Magdalenian floors in the Lower Gallery of La Garma. A preliminary report .....	31
<i>Olaf Jöris · Martin Street · Elaine Turner</i> Spatial analysis at the Magdalenian site of Gönnersdorf (Central Rhineland, Germany). An introduction .....	53
<i>Martina Sensburg</i> The relation between time and space in Gönnersdorf K-II .....	81
<i>Frank Moseler</i> Spatial analysis of Concentration K-IV of the Magdalenian site of Gönnersdorf .....	103
<i>Sabine Gaudzinski-Windheuser</i> An introduction to living structures and the history of occupation at the Late Upper Palaeolithic site of Oelknitz (Thuringia, Germany) .....	127
<i>Stefan Wenzel</i> The Magdalenian dwelling of Orp East (Belgium) and its spatial organization .....	141
<i>Frank Gelhausen</i> Subsistence strategies and settlement systems at the <i>Federmessergruppen</i> site of Niederbieber (Central Rhineland, Germany) .....	159
<i>Claudio Casati · Lasse Sørensen</i> Two hut structures from an Early Mesolithic site at Ålyst (Denmark). A preliminary report .....	175
<i>Daniela Holst</i> Spatial organization and settlement dynamics of Mesolithic nut processing sites in the Duvensee bog (Northern Germany) .....	187
<i>Jorge Martínez-Moreno · Rafael Mora Torcal</i> Spatial organization at Font del Ros, a Mesolithic settlement in the South-Eastern Pyrenees .....	213

<i>Lars Larsson · Arne Sjöström</i>	
Hut and house structures in the Mesolithic of Southern Scandinavia . . . . .	233
<i>Ole Grøn</i>	
A 7 000 year old Mesolithic dwelling with a brush floor excavated under water.	
A window into behavioural organization of hunter-gatherer dwellings . . . . .	249
<i>Dani Nadel · Ehud Weiss · Hartmut Tschauner</i>	
Gender-specific division of indoor space during the Upper Palaeolithic?	
A brush hut floor as a case study . . . . .	263
List of contributors . . . . .	275

## LIST OF CONTRIBUTORS

- Esteban Álvarez Fernández**  
Edificio Interfacultativo de la  
Universidad de Cantabria  
Instituto Internacional de Investigacio-  
nes Prehistóricas de Cantabria  
Avda. de los Castros, s/n  
E - 39005 Santander  
esteban.alvarez@unican.es
- Walpurga Antl-Weiser**  
Naturhistorisches Museum Wien  
Prähistorische Abteilung  
Burgring 7  
A - 1014 Wien  
walpurga.antl@nhm-wien.ac.at
- Pablo Arias**  
Edificio Interfacultativo de la  
Universidad de Cantabria  
Instituto Internacional de Investigacio-  
nes Prehistóricas de Cantabria  
Avda. de los Castros, s/n  
E - 39005 Santander  
pablo.arias@unican.es
- Claudio Casati**  
Københavns Universitet  
Saxo-Instituttet  
and Frederiksbundstvej 150, 1th  
DK - 2700 Brønshøj  
claudio@casati.dk
- Marián Cueto**  
Edificio Interfacultativo de la  
Universidad de Cantabria  
Instituto Internacional de Investigacio-  
nes Prehistóricas de Cantabria  
Avda. de los Castros, s/n  
E - 39005 Santander  
mariancueto@hotmail.com
- Mikelo Elorza**  
Sociedad de Ciencias Aranzadi  
Alto de Zorroaga 11  
E - 20014 San Sebastián  
concholis@yahoo.com
- Cristina García-Moncó**  
Edificio Interfacultativo de la  
Universidad de Cantabria  
Instituto Internacional de Investigacio-  
nes Prehistóricas de Cantabria  
Avda. de los Castros, s/n  
E - 39005 Santander  
cristijarl@hotmail.com
- Sabine Gaudzinski-Windheuser**  
Römisch-Germanisches Zentralmuseum  
Forschungsbereich Altsteinzeit  
Schloss Monrepos  
D - 56567 Neuwied  
gaudzinski@rgzm.de
- Frank Gelhausen**  
Römisch-Germanisches Zentralmuseum  
Forschungsbereich Altsteinzeit  
Schloss Monrepos  
D - 56567 Neuwied  
gelhausen@rgzm.de
- Ole Grøn**  
Langelands Museum  
Jens Winthersvej 12  
DK - 5900 Rudkøbing  
olg@langelandkommune.dk
- Alexandra Güth**  
Römisch-Germanisches Zentralmuseum  
Forschungsbereich Altsteinzeit  
Schloss Monrepos  
D - 56567 Neuwied  
gueth@rgzm.de
- Daniela Holst**  
Römisch-Germanisches Zentralmuseum  
Forschungsbereich Altsteinzeit  
Schloss Monrepos  
D - 56567 Neuwied  
holst@rgzm.de
- Olaf Jöris**  
Römisch-Germanisches Zentralmuseum  
Forschungsbereich Altsteinzeit  
Schloss Monrepos  
D - 56567 Neuwied  
joeris@rgzm.de
- Maria José Iriarte**  
Universidad del País Vasco  
Area de Prehistoria  
Grupo de Investigación de Alto  
Rendimiento (9/UPV 155.130-  
14570/2002)  
C / Tomás y Valiente, s/n  
E - 01006 Vitoria-Gasteiz (Alava)  
mariajose.iriarte@ehu.es
- Lars Larsson**  
Lunds Universitet  
Institutionen för arkeologi och antikens  
historia  
Box 117  
SE - 221 00 Lund  
lars.larsson@ark.lu.se
- Jorge Martínez-Moreno**  
Universitat Autònoma de Barcelona  
Facultat de Lletres  
Centre d'Estudis del Patrimoni  
Arqueològic de la Prehistoria  
E - 08193 Bellaterra  
jorge.martinez@uab.es
- Rafael Mora Torcal**  
Universitat Autònoma de Barcelona  
Facultat de Lletres  
Centre d'Estudis del Patrimoni  
Arqueològic de la Prehistoria  
E - 08193 Bellaterra  
rafael.mora@uab.es
- Frank Moseler**  
Römisch-Germanisches Zentralmuseum  
Forschungsbereich Altsteinzeit  
Schloss Monrepos  
D - 56567 Neuwied  
moseler@rgzm.de



**Dani Nadel**

University of Haifa  
Zinman Institute of Archaeology  
Haifa  
Israel 31905  
dnadel@research.haifa.ac.il

**Lasse Sørensen**

Københavns Universitet  
Saxo-Instituttet  
and Sankt Hansgades Passage 11, 2th  
DK - 2200 København N  
soerensenlasse@hotmail.com

**Elaine Turner**

Römisch-Germanisches Zentralmuseum  
Forschungsbereich Altsteinzeit  
Schloss Monrepos  
D - 56567 Neuwied  
turner@rgzm.de

**Philipp R. Nigst**

University of Cambridge  
Division of Archaeology  
Department of Archaeology &  
Anthropology  
G04, Faculty Building  
Downing Street  
GB - CB2 3DZ Cambridge  
prn25@cam.ac.uk

**Martin Street**

Römisch-Germanisches Zentralmuseum  
Forschungsbereich Altsteinzeit  
Schloss Monrepos  
D - 56567 Neuwied  
street@rgzm.de

**Ehud Weiss**

Bar Ilan University  
Faculty of Life Sciences and The  
Institute of Archaeology  
The Martin (Szusz) Department of Land  
of Israel Studies and Archaeology  
Ramat-Gan  
Israel 52900

**Roberto Ontañón**

Edificio Interfacultativo de la  
Universidad de Cantabria  
Instituto Internacional de Investigacio-  
nes Prehistóricas de Cantabria  
Avda. de los Castros, s/n  
E - 39005 Santander  
ontanon\_r@gobcantabria.es

**Luis C. Teira**

Edificio Interfacultativo de la  
Universidad de Cantabria  
Instituto Internacional de Investigacio-  
nes Prehistóricas de Cantabria  
Avda. de los Castros, s/n  
D - 39005 Santander  
luis.teira@gestion.unican.es

**Stefan Wenzel**

Römisch-Germanisches Zentralmuseum  
Forschungsbereich Vulkanologie,  
Archäologie und Technikgeschichte  
An den Mühlsteinen 7  
D - 56727 Mayen  
wenzel@rgzm.de

**Martina Sensburg**

Abteistr. 9  
D - 56170 Bendorf  
sensburg@rgzm.de

**Hartmut Tschauener**

exeGesIS Spatial Data Management Ltd  
Great House Barn  
New Street  
GB - LD3 0AH Talgarth, Powys  
HartmutT@esdm.co.uk

**Débora Zurro**

Departament d'Arqueologia i  
Antropologia  
Institución Milá y Fontanals  
CSICC/Egipcíacques, 15  
E - 08001 Barcelona  
debora@bicat.csic.es

**Arne Sjöström**

Lunds Universitet  
Institutionen för arkeologi och antikens  
historia  
Box 117  
SE - 221 00 Lund  
Arne.Sjostrom@ark.lu.se

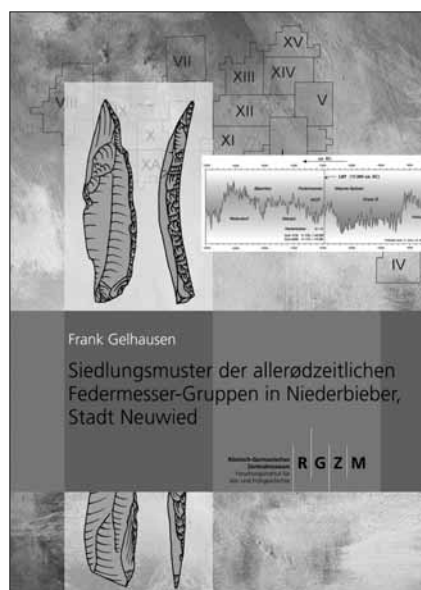
## AUS DEM VERLAGSPROGRAMM

Frank Gelhausen

### Siedlungsmuster der allerødzeitlichen Federmesser-Gruppen in Niederbieber, Stadt Neuwied

Der Ausbruch des Laacher See-Vulkans um 11000 v. Chr. hat mit einer mächtigen Bimsdecke die Landschaft am Mittelrhein versiegelt. In einer unvergleichlichen Momentaufnahme blieben so das Geländere relief, die Reste von Vegetation und Fauna erhalten, dazu viele Hinweise auf die Nutzung der Region durch den Menschen.

Der Fundplatz Niederbieber ist dabei für archäologische Untersuchungen von herausragender Bedeutung. Hier konnte auf einer ca. 1000 m<sup>2</sup> großen Fläche eine beträchtliche Zahl von Fundkonzentrationen freigelegt werden, die Einblick in die sonst kaum zu fassenden Siedlungsprozesse der spät-eiszeitlichen Federmesser-Gruppen ermöglichen. Der Autor hat in seinem Buch die Funde und Befunde des zentralen Flächenteils von Niederbieber analysiert. Die Ergebnisse seiner Untersuchungen liefern neue Erkenntnisse über die vor Ort ausgeführten Tätigkeiten, die Belegungsdauer der Fundkonzentration sowie die Lebensweise der Menschen am Ende der Eiszeit.



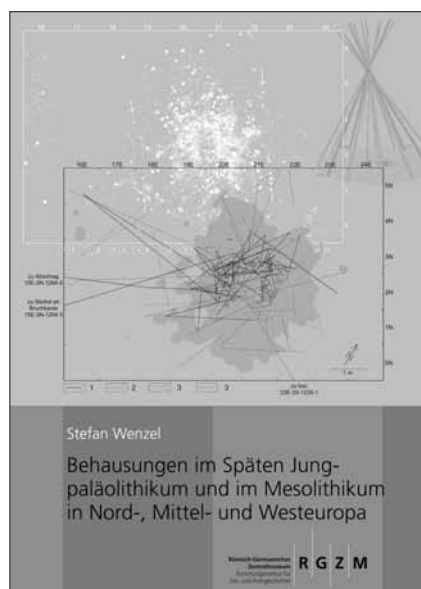
Monographien des RGZM, Band 90  
302 S. mit 151 z. T. farb. Abb.,  
15 Plänen, 4 Listen, 23 Taf.,  
21 x 29,7 cm, Hardcover, fadengeheftet  
ISBN 978-3-88467-158-0  
86,- €

Stefan Wenzel

### Behausungen im Späten Jungpaläolithikum und im Mesolithikum in Nord-, Mittel- und Westeuropa

Wo in der Zeit von 15000-5000 v. Chr. Jäger und Sammler in den Steppen und Wäldern Europas ihr Lager aufschlugen, blieben meist in großer Zahl Steinartefakte und Herdsteine zurück. Nur selten aber sind Wohnbauten anhand von erhaltenen Konstruktionselementen direkt nachweisbar.

In diesem Buch werden sechs Fundkonzentrationen daraufhin untersucht, ob es Indizien dafür gibt, dass ehemals Zeltwände einer diffusen Verteilung der Steinabfälle nach außen hin als Hindernis im Weg standen: Orp Ost und Rekem 10 in Belgien, Cepoy im Pariser Becken, Geldrop 3-2 in den südlichen Niederlanden, Berlin-Tegel IX sowie Hartmannsdorf 26 in Brandenburg. Bei diesen Siedlungsstrukturen wie bei den zum Vergleich heran-gezogenen Wohnbauten und nicht überdachten Lagerplätzen dieses Zeitabschnitts lassen sich ferner Arbeitsbereiche rekonstruieren, die Aussagen zur Organisation der jeweiligen lokalen Gruppen erlauben.



Monographien des RGZM, Band 81  
183 S. mit 150 s/w-Abb., 4 Farbtaf.,  
21 x 29,7 cm, Hardcover, fadengeheftet  
ISBN 978-3-88467-136-8  
70,- €

Verlag des Römisch-Germanischen Zentralmuseums, Mainz

Ernst-Ludwig-Platz 2 · 55116 Mainz · Tel.: 0 61 31/91 24-0 · Fax: 0 61 31/91 24-199  
E-Mail: verlag@rgzm.de · Internet: www.rgzm.de

## AUS DEM VERLAGSPROGRAMM

Martina Sensburg · Frank Moseler

### Die Konzentrationen IIb und IV des Magdalénien-Fundplatzes Gönnersdorf (Mittelrhein)



Der Magdalénien-Fundplatz Gönnersdorf bietet einzigartige Möglichkeiten der räumlichen Analyse eines jungpaläolithischen Siedlungsareals. Während die Konzentration IV bereits Gegenstand einer 1997 erschienenen Untersuchung war, handelt es sich bei Konzentration IIb um eine bislang unerforschte Siedlungsstruktur.

Die Konzentration IIb stellt eine Teilfläche der Großkonzentration II dar, deren zentrale Siedlungsstruktur (Konzentration IIa) bereits 2007 ausführlich behandelt wurde. Im Vordergrund steht nun, sowohl die Funktion der Siedlungsstrukturen in Konzentration IIb als auch ihr zeitliches und räumliches Verhältnis zu den benachbarten Konzentrationen IIa und III zu klären.

Monographien des RGZM, Band 73  
176 S. mit 43 z.T. farb. Abb.,  
13 Tab., 62 Plänen,  
21 × 29,7 cm, Hardcover, fadengeheftet  
ISBN 978-3-88467-120-7  
44,- €

Eine erneute räumliche Analyse von Konzentration IV erschien sinnvoll, da sich besonders digitale Analyseverfahren seit der Erstbearbeitung erheblich verfeinert haben und nun einige vormals unbehandelte Teilaspekte untersucht werden konnten. Das führte hinsichtlich der Beziehung zwischen latenten und evidenten Befunden sowie der Artefaktherstellung in Konzentration IV zu detaillierten Ergebnissen.

Martina Sensburg

### Die räumliche Organisation der Konzentration IIa von Gönnersdorf



Monographien des RGZM, Band 69  
231 S. mit 113 z.T. farb. Abb.,  
1 Beil., 21 × 29,7 cm, Hardcover,  
fadengeheftet  
ISBN 978-3-88467-110-8  
64,- €

Der Magdalénien-Fundplatz Gönnersdorf repräsentiert einen der europaweit seltensten Siedlungsbefunde des späten Jungpaläolithikums. Sein außergewöhnlicher Erhaltungszustand ermöglicht seit seiner Entdeckung 1968 einen beständigen Erkenntniszuwachs in Hinblick auf die Lebensweise eiszeitlicher Jäger und Sammler. So erfolgte bereits die grundlegende Untersuchung der Siedlungsstrukturen in den Großkonzentrationen I, III und IV. Die Behandlung der zentralen und zugleich fundreichsten Konzentration IIa stand bislang jedoch noch aus. Mit der vorliegenden Arbeit kann diese Lücke nun geschlossen werden.

Der Schwerpunkt der Analysen von Konzentration IIa liegt vor allem auf einer Rekonstruktion der alltäglichen Aktivitäten der ehemaligen Bewohner. Hierzu wird die räumliche Beziehung latenter Fundverteilungen zu den evidenten Befunden, wie z. B. dem zentralen Behausungsgrundriss, den Gruben und den Feuerstellen, ausführlich diskutiert. Hieraus sowie aus den Zusammensetzungsanalysen ergeben sich schließlich entscheidende Hinweise, die zu der Entwicklung eines ganz neuen Besiedlungsmodells nicht nur für Konzentration IIa, sondern für den gesamten Fundplatz führen.

Verlag des Römisch-Germanischen Zentralmuseums, Mainz

Ernst-Ludwig-Platz 2 · 55116 Mainz · Tel.: 0 61 31/91 24-0 · Fax: 0 61 31/91 24-199  
E-Mail: verlag@rgzm.de · Internet: www.rgzm.de