



HAL
open science

Distinct Immune Response in Two MERS-CoV-Infected Patients: Can We Go from Bench to Bedside?

Emmanuel Faure, Julien Poissy, Anne Goffard, Clement Fournier, Eric Kipnis, Marie Titecat, Perinne Bortolotti, Laura Martinez, Sylvain Dubucquoi, Rodrigue Dessenin, et al.

► To cite this version:

Emmanuel Faure, Julien Poissy, Anne Goffard, Clement Fournier, Eric Kipnis, et al.. Distinct Immune Response in Two MERS-CoV-Infected Patients: Can We Go from Bench to Bedside?. PLoS ONE, 2014, 9 (2), pp.e88716. 10.1371/journal.pone.0088716 . hal-02266765

HAL Id: hal-02266765

<https://hal.science/hal-02266765>

Submitted on 3 Jan 2024

HAL is a multi-disciplinary open access archive for the deposit and dissemination of scientific research documents, whether they are published or not. The documents may come from teaching and research institutions in France or abroad, or from public or private research centers.

L'archive ouverte pluridisciplinaire **HAL**, est destinée au dépôt et à la diffusion de documents scientifiques de niveau recherche, publiés ou non, émanant des établissements d'enseignement et de recherche français ou étrangers, des laboratoires publics ou privés.



Distributed under a Creative Commons Attribution 4.0 International License

Distinct Immune Response in Two MERS-CoV-Infected Patients: Can We Go from Bench to Bedside?

Emmanuel Faure^{1,9}, Julien Poissy^{2,9}, Anne Goffard³, Clement Fournier⁴, Eric Kipnis¹, Marie Titecat⁵, Perinne Bortolotti¹, Laura Martinez¹, Sylvain Dubucquoi⁶, Rodrigue Dessein¹, Philippe Gosset⁷, Daniel Mathieu², Benoit Guery^{1*}

1 Host-Pathogen translational research group, Université de Lille 2, Lille, France, **2** Pôle de Réanimation, Hôpital Roger Salengro, Centre Hospitalier Régional et Universitaire de Lille, Université de Lille 2, Lille, France, **3** Laboratoire de Virologie, Centre de Biologie Pathologie, Centre Hospitalier Régional et Universitaire de Lille, Université de Lille 2, Lille, France, **4** Clinique des Maladies Respiratoires, Endoscopie bronchique et pleurale - Endoscopie Interventionnelle, Centre Hospitalier Régional et Universitaire de Lille, Université de Lille 2, Lille, France, **5** Institut de Microbiologie, Centre Biologie Pathologie, Centre Hospitalier Régional et Universitaire de Lille, Université de Lille 2, Lille, France, **6** Institut d'Immunologie, Centre Biologie Pathologie, Centre Hospitalier Régional et Universitaire de Lille, Université de Lille 2, Lille Cedex, France, **7** Centre National de la Recherche Scientifique, Unité Mixte de Recherche 8204, Lille, France; Institut National de la Santé et de la Recherche Médicale, U1019, Lille, France

Abstract

One year after the occurrence of the first case of infection by the Middle East Respiratory Syndrome coronavirus (MERS-CoV) there is no clear consensus on the best treatment to propose. The World Health Organization, as well as several other national agencies, are still working on different clinical approaches to implement the most relevant treatment in MERS-CoV infection. We compared innate and adaptive immune responses of two patients infected with MERS-CoV to understand the underlying mechanisms involved in the response and propose potential therapeutic approaches. Broncho-alveolar lavage (BAL) of the first week and sera of the first month from the two patients were used in this study. Quantitative polymerase chain reaction (qRT-PCR) was performed after extraction of RNA from BAL cells of MERS-CoV infected patients and control patients. BAL supernatants and sera were used to assess cytokines and chemokines secretion by enzyme-linked immunosorbent assay. The first patient died rapidly after 3 weeks in the intensive care unit, the second patient still recovers from infection. The patient with a poor outcome (patient 1), compared to patient 2, did not promote type-1 Interferon (IFN), and particularly IFN α , in response to double stranded RNA (dsRNA) from MERS-CoV. The absence of IFN α , known to promote antigen presentation in response to viruses, impairs the development of a robust antiviral adaptive Th-1 immune response. This response is mediated by IL-12 and IFN γ that decreases viral clearance; levels of both of these mediators were decreased in patient 1. Finally, we confirm previous *in vitro* findings that MERS-CoV can drive IL-17 production in humans. Host recognition of viral dsRNA determines outcome in the early stage of MERS-CoV infection. We highlight the critical role of IFN α in this initial stage to orchestrate a robust immune response and bring substantial arguments for the indication of early IFN α treatment during MERS-CoV infection.

Citation: Faure E, Poissy J, Goffard A, Fournier C, Kipnis E, et al. (2014) Distinct Immune Response in Two MERS-CoV-Infected Patients: Can We Go from Bench to Bedside? PLoS ONE 9(2): e88716. doi:10.1371/journal.pone.0088716

Editor: Fausto Baldanti, Fondazione IRCCS Policlinico San Matteo, Italy

Received: October 10, 2013; **Accepted:** January 9, 2014; **Published:** February 14, 2014

Copyright: © 2014 Faure et al. This is an open-access article distributed under the terms of the Creative Commons Attribution License, which permits unrestricted use, distribution, and reproduction in any medium, provided the original author and source are credited.

Funding: This study was funded by CHRU Lille, Lille 2 University. The funders had no role in study design, data collection and analysis, decision to publish, or preparation of the manuscript.

Competing Interests: The authors have declared that no competing interests exist.

* E-mail: bguery@gmail.com

These authors contributed equally to this work.

Introduction

Coronaviruses are large enveloped single-stranded RNA viruses associated with a wide range of clinical presentations in animals and humans [1]. In September 2012, a novel human coronavirus, named Middle East Respiratory Syndrome Coronavirus (MERS-CoV), belonging to lineage C of the genus *Betacoronavirus*, was identified in two patients with severe acute respiratory disease in Saudi Arabia [2]. Several countries (France, Germany, Jordan, Qatar, Saudi Arabia, Tunisia, and the United-Kingdom) reported new cases. Recently, Assiri *et al.* published an extensive description of 47 cases from Saudi Arabia [3].

Coronaviruses, like most successful viruses, have evolved strategies to evade the innate immune response. Type-1 interferon

(IFN) expression is a crucial component of this initial response, and coronaviruses have developed strategies to prevent IFN induction [4]. Double-stranded RNA (dsRNA) are recognized by the innate immune system through activation of cytosolic (RIG-1 and MDA-5) [5] and membranous (TLR3) [6,7] pattern recognition receptors (PRRs). The recognition by these PRRs triggers the activation of Interferon Regulatory Factor (IRF3, IRF7) which leads to the induction of type-1 interferon, such as IFN α and IFN β [8]. Type-1 IFN activates immune anti-viral effectors such as Natural Killer (NK) cells [9], T CD8+ cells and macrophages, allowing viral clearance [10]. Consistent with the studies demonstrating that Severe Acute Respiratory Syndrome (SARS)-CoV proteins contribute to dampen type-1 IFN signalling to evade innate immunity and viral clearance [1,7], an *in vitro* study reported

a beneficial effect of Interferon-alpha (IFN α) treatment on MERS-CoV replication in a cellular model [11]. In this study the authors showed that MERS-CoV was 50-100 times more sensitive to IFN- α treatment than SARS-CoV. However, to date there is no clear therapeutic protocol beside supportive treatment in MERS-CoV infection.

Here we report the analysis of the immune response in two concomitant cases of patients infected with MERS-CoV admitted to the Lille University Teaching Hospital between April and June 2013. The clinical presentation was previously reported [12], and the outcome of these two patients largely differed. Indeed, the first patient died after one month in the intensive care unit, while the second patient is still recovering from infection. We compared the early immune response of these two patients to describe putative underlying mechanisms of MERS-CoV infection and propose potential therapeutic targets.

Materials and Methods

Samples

Broncho-alveolar lavage (BAL) samples. We obtained samples from BAL performed during the first week after the onset of symptoms for the two infected patients: patient 1 (n=2, duplicates) and patient 2 (n=2, duplicates). Control samples (n=4) were obtained from patients from the Pulmonology department requiring BAL for reasons other than respiratory

tract infection. Additional control samples for bacterial respiratory tract infection were obtained from patients with *Streptococcus pneumoniae*-induced pneumonia requiring BAL in the Infectious Diseases Unit (n=2). Finally, during recovery, patient 2 presented a Herpes Simplex Virus type 1 (HSV) lung replication related to a compensatory anti-inflammatory response syndrome (CARS syndrome) (n=1, duplicates), a BAL was performed for diagnosis and used in this study as control for virus-induced pneumonia. BAL supernatants were used for enzyme-linked immunosorbent assay (ELISA), BAL cells were used for RNA extraction and quantitative polymerase chain reaction (qRT-PCR).

Serum samples. Serum samples were obtained from patient 1 and 2. Control samples were obtained from the serological biobank of the Institute of Immunology (graciously provided by Sylvain Dubucquoi M.D. PhD). Samples from a renal transplant recipient with a comparable immunosuppressive therapy were used as control for patient 1. Patient 2 had an immunological analysis performed prior to MERS-CoV infection in November 2012 in the context of his histamine-induced angioedema. These biobanked samples were used in this study as controls.

qRT-PCR expression analysis. Samples were kept at -80°C . RNA extractions were performed using Qiagen RNeasy mini kit (Qiagen, UK). Isolated RNA were reverse-transcribed with the High Capacity cDNA Reverse Transcription Kit (Life technologies, UK) according to the manufacturer's

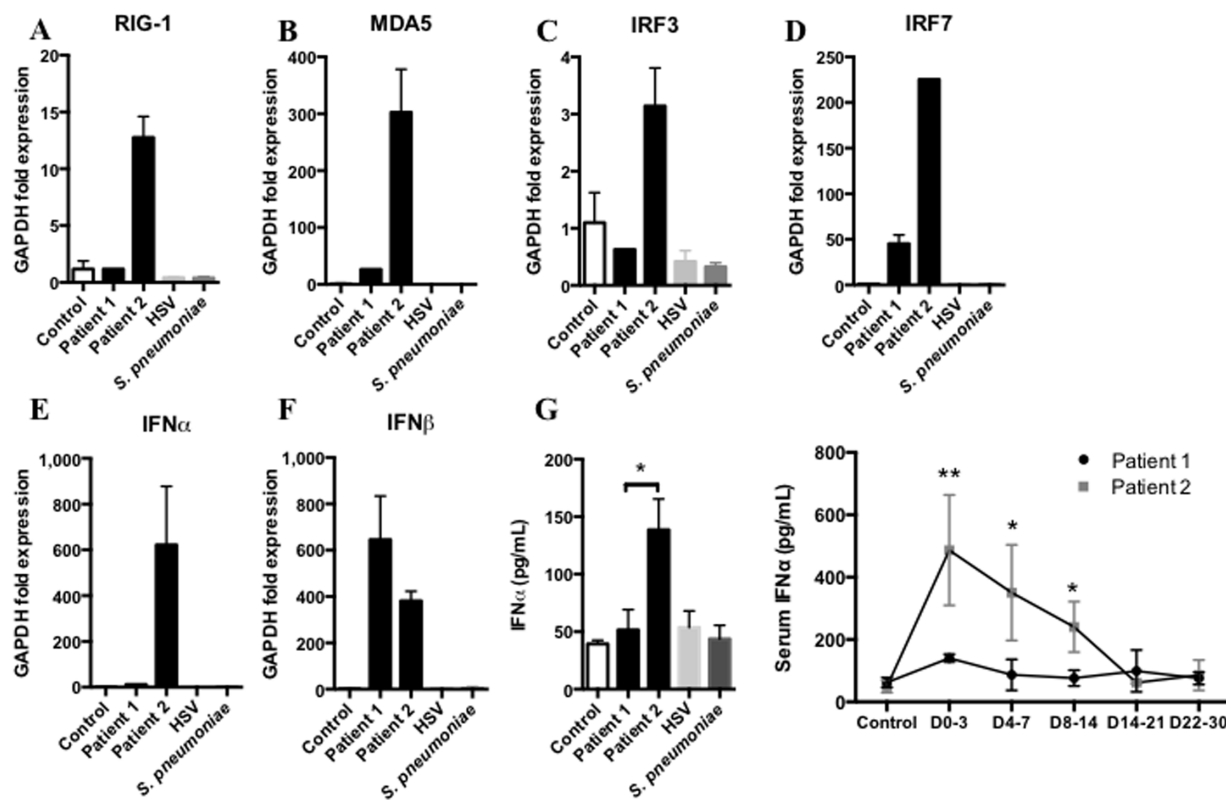


Figure 1. Innate immune response against MERS-CoV requires IFN α expression. A,B,C,D,E,F qRT-PCR analysis of RIG-1, MDA-5, IRF3, IRF7, IFN α and IFN β from first week broncho-alveolar lavage (BAL) cells of MERS-CoV infected patients, patient 1 and patient 2 (black columns), Control (white column), *S. pneumoniae*-induced pneumonia (dark grey column) and patient 2 Herpes simplex virus-induced pneumonia (light grey column) (n=2 to 4, duplicates). G Assessment of IFN α protein in BAL supernatants from the first week following onset of clinical symptoms in samples from patient 1 and patient 2. Control group, HSV and bacterial samples from BALs of patients without infection, with lung HSV replication and with upper respiratory tract infection respectively. (n=2 to 4, duplicates), and assessment of IFN α protein in sera of the 30 days following MERS-CoV infection in patient 1 (black line) and patient 2 (grey line). (n=2 to 4, duplicates). Measurement obtained between D0–3: day 0 and day 3, D4–7: day 4 and 7, D8–14: day 8 and 14, D15–21: day 15 and 21, D22–30: day 22 and 30. doi:10.1371/journal.pone.0088716.g001

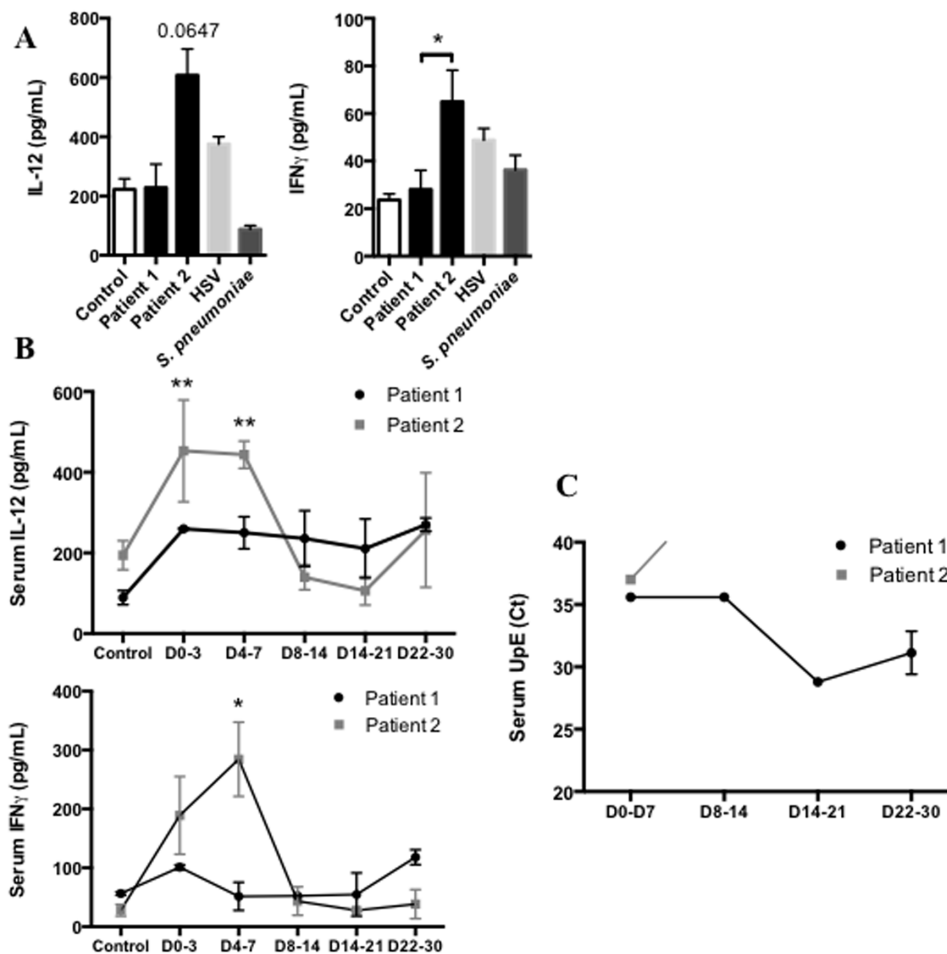


Figure 2. Adaptive response to control MERS-CoV replication requires early IL-12/IFN γ secretion. **A** Assessment of IL-12 and IFN γ protein in BAL supernatants of first week following onset of clinical symptoms of patient 1 and patient 2. Control group, HSV and bacterial were same samples as previously described. (n=2 to 4, duplicates). **B** Assessment of IL-12 and IFN γ protein in sera of the 30 days following MERS-CoV infection in Patient 1 (black line) and Patient 2 (grey line). (n=2 to 4, duplicates). **C** Assessment of MERS-CoV viral load by quantitative PCR in threshold Cycle (Ct) in serum. Measurement obtained between D0–3: day 0 and day 3, D4–7: day 4 and 7, D8–14: day 8 and 14, D15–21: day 15 and 21, D22–30: day 22 and 30.

doi:10.1371/journal.pone.0088716.g002

instructions. The resulting cDNA (equivalent to 25 ng of total RNA) was amplified using the KAPASYBR real-time PCR kit (Kapa Biosystems, United States of America) and detected on an ABI7900HT (Applied Biosystem, UK). RT-PCR was performed with the following forward and reverse primers for: GAPDH (5'-ACCCACTCCTCCACCTTTGA -3') and (3'-CATACCAGGAAATGA GCTTGACAA-5'), RIG-1 (5'-GCCATTACACTGTGCTTGGAGA-3') and (3'-CCAGTTGCAATATCCTC-CACCA-5'), MDA-5 (5'-TGTATTTCATTATGCTACAGAACTG-3') and (3'-ACTGAGACTGGTACTTTGGATTCT-5'), IRF3 (5'-AGGACCCTCACGACCCACATAA -3') and (3'-GGCCAACACCATGTTACCCAGT-5'), IRF7 (5'-TGGTCTGTGAAGCTGGAA-3') and (3'-GATGTGCTCATAGAGGCTGTTGG-5'), IFN α (5'-AGCCATCTCTGTCCTCCATGAG-3') and (3'-TGCATCACACAGGCTTCCAA-5') IFN β (5'-GTCTCCTCCAAATGCTCTC-3') and (3'-ACAGGAGCTTCTGACACTGA-5'), IL-17A (5'-ACTACAACCGATCCACCTCAC-3') and (3'-ACTTTGCCTCCAGATCACAG-5'). On completion of the PCR amplification, a DNA melting curve analysis was carried out in order to confirm the presence of a single amplicon. GAPDH was used as an internal reference gene in order to normalize the transcript levels. Relative mRNA levels ($2^{-\Delta\Delta Ct}$)

were determined by comparing (a) the PCR cycle thresholds (Ct) for the gene of interest and GAPDH (ΔCt) and (b) ΔCt values for treated and control groups ($\Delta\Delta Ct$).

Cytokine Assay. Cytokines levels in BAL supernatants and sera were assessed by ELISA. Human DuoSet kits (R&D Systems, UK) for CXCL10 or Human Ready-to-go kit (eBiosciences, USA) for IL-12, IL-10, IL-17, IL-23, IFN α and IFN γ .

Statistical analysis

Statistical analysis was performed using Prism 6 software (GraphPad).

Kruskall-Wallis test was used for all comparisons except when otherwise indicated. Significance was accepted at $p < 0.05$.

Ethics Statement

We obtained the approval of the Lille Hospital Ethic committee. All the participants provided their written or verbal consent to participate on this study. The consent procedure was approved by the Ethic committee. The patients in this manuscript or their next of kin have given written informed consent or verbal consent,

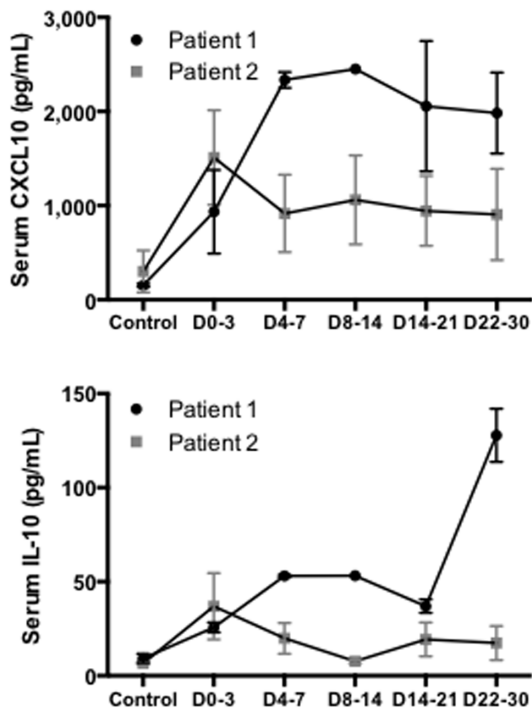


Figure 3. Persistent increased levels of CXCL10 and IL-10 are found in the patient with poor outcome during MERS-CoV infection. Assessment of CXCL10 and IL-10 protein in sera of the 30 days following MERS-CoV infection in patient 1 (black line) and patient 2 (grey line). (n = 2 to 4, duplicates). Measurement obtained between D0–3: day 0 and day 3, D4–7: day 4 and 7, D8–14: day 8 and 14, D15–21: day 15 and 21, D22–30: day 22 and 30.
doi:10.1371/journal.pone.0088716.g003

when writing was not physically possible, to publication of their case details.

Results

Patient 1, a 64-year-old man, had undergone renal transplantation in 1998 for end-stage renal failure secondary to diabetes. His treatments associated mycophenolate mofetil, ciclosporin, and prednisone. Clinical symptoms began on April 22; he was transferred to the intensive care unit and intubated on April 30. On May 8, the patient required implementation of extracorporeal membrane oxygenation (ECMO) and died on May 28 of refractory multiple organ failure.

Patient 2, a 51-year-old man, was admitted on April 26. His medical history included a histamine-induced angioedema treated with systemic corticosteroid therapy. Patient 2 shared patient 1's room from April 26 to April 29. On May 8, patient 2 presented with asthenia, myalgia, and cough. On May 12, he was intubated and transferred to the intensive care unit of the Lille University teaching hospital. ECMO was implemented with on May 14 for refractory hypoxemia despite optimal treatment. The patient was successfully weaned off ECMO on June 17. On July 2, percutaneous tracheotomy was performed. Currently, the patient is able to breathe spontaneously 12 hours per day but requires 3 days intermittent haemodialysis per week.

We analysed the expression of the main receptors and regulators involved in the recognition of double stranded RNA (dsRNA) from *Coronaviridae* in the cells isolated from the initial BAL samples of patients 1 and 2. Day 0 is the onset of clinical symptoms compatible with MERS-CoV infection (fever, rigors, chills) for

each patient. Here we show that patient 1 could not induce the expression of the key receptors, RIG-1 and MDA-5 (Figure 1A and 1B), in response to MERS-CoV infection. Moreover, IRF3 and IRF7 expression were decreased (Figure 1C and 1D) leading to a dramatically decreased IFN α expression (Figure 1E), without any difference in IFN β expression (Figure 1F). IFN α secretion in BAL supernatants and serum was consistent with the previous findings, IFN α levels were decreased in sera and BAL from patient 1 compared to patient 2 (Figure 1G). None of these markers were activated in control, HSV and *Streptococcus pneumoniae* infections.

Viral stimulation of pulmonary antigen presenting cells such as alveolar macrophages or dendritic cells leads to the secretion of IL-12 and contributes to activate T lymphocytes into CD4+ T helper-1 (Th1) lymphocytes. Recognition by IL-12R on T CD4+ Th1 cells promotes secretion of IFN γ that contributes to the early immune response by inducing death of infected cells and activating two key cells involved in viral clearance, CD8+ T effectors and Natural Killer (NK) cells[9,13]. Here we report that IL-12 and IFN γ levels were decreased in BAL supernatants of patient 1 compared to patient 2 (Figure 2A). Furthermore, the kinetic analysis of IL-12 and IFN γ levels in the sera after infection shows that patient 2 promoted an early Th1 response mediated by IL-12 and IFN γ in response to MERS-CoV (Figure 2B). Conversely, patient 1 did not increase IL-12 and IFN γ in BAL or sera.

Interestingly, the analysis of MERS-CoV load in the serum by quantitative PCR shows that while patient 2 rapidly cleared the virus in this compartment, the virus remains detectable in the serum of patient 1 until death (Figure 2C).

We also measured serum levels of CXCL10, an epithelial chemokine, and IL-10, since these two cytokines were associated with a poor outcome during viral infection and particularly SARS-CoV acute respiratory infection[7,14–16]. In fact, poor outcome was correlated with uncontrolled and durable IL-10 and CXCL10 secretion[7,14]. Consistent with these findings, we found that both patients initially promoted IL-10 and CXCL10 secretion in response to MERS-CoV (Figure 3). However, while for patient 2 the response was transient for both IL-10 and CXCL10 during the first week following the onset of the first symptoms, patient 1 had a persistent increase of IL-10 and CXCL10 levels.

In a recent study, Jossset *et al.* demonstrated, in an *in vitro* microarray analysis, that MERS-CoV could promote IL-17A expression compared to SARS-CoV[17]. Consistent with these findings, we report that MERS-CoV increases the expression of IL-17A in the lungs (Figure 4A). We assessed the secretion of IL-17A in BAL supernatants and showed that IL-17A secretion was increased in both patients in response to MERS-CoV (Figure 4B), with higher level for patient 1 compared to patient 2. We hypothesized the involvement of IL-23 secretion, known in humans to trigger IL-17 secretion in response to viruses[18,19]. To this end, we assessed IL-23 secretion in the lungs and found that IL-23 secretion was significantly increased in BAL from patient 1 compared to patient 2 (Figure 4B). Finally, we found elevated IL-23 and IL-17A levels in the serum of patient 1, in the first days following the infection by MERS-CoV (Figure 4C). Interestingly, IL-23 secretion was increased in the BAL supernatant of patient 2 during HSV replication.

Discussion

In June 2012, Zaki *et al.* reported for the first time a case of infection with Middle-East Respiratory Syndrome coronavirus (MERS-CoV)[2]. Since then, several reports have been published providing a more detailed description of the disease. Among the

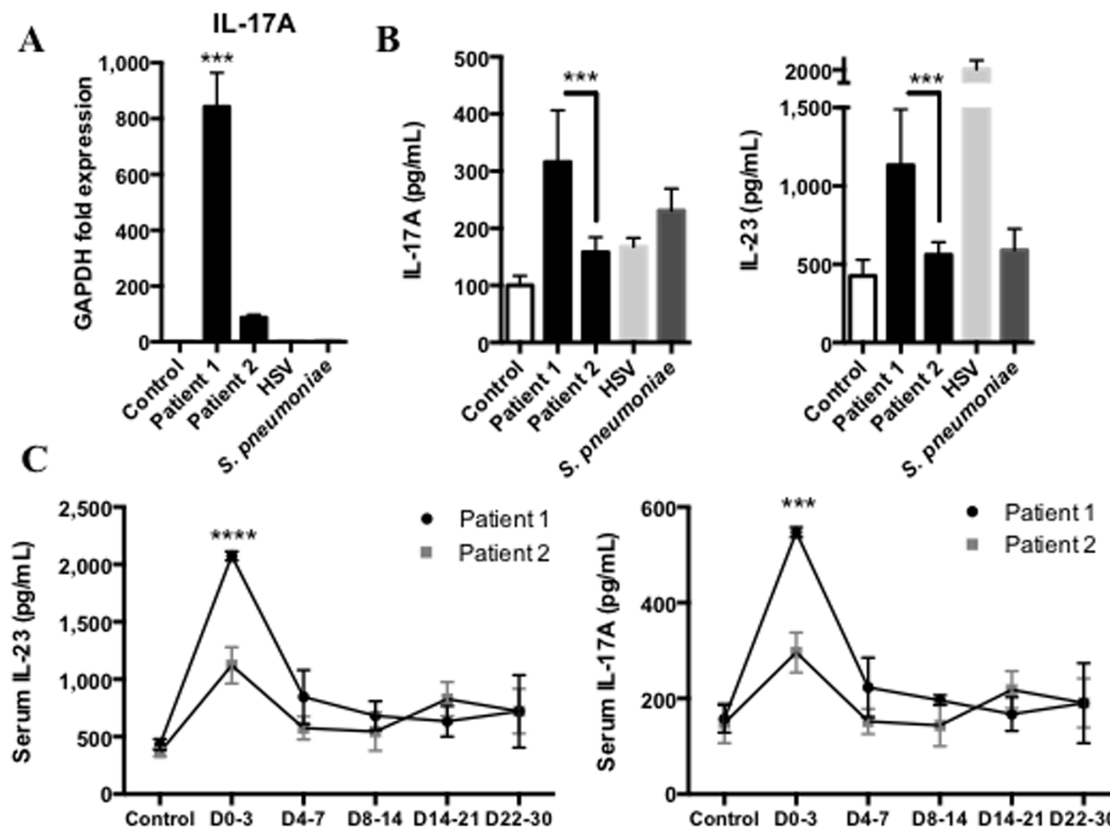


Figure 4. MERS-CoV induces IL-17 secretion. **A**, qRT-PCR analysis of IL-17A from first week broncho-alveolar lavage (BAL) cells of MERS-CoV infected patients, Patient 1 and Patient 2 (black columns), Control (white column), *S. Pneumoniae*-induced pneumonia (dark grey column) and Patient 2 Herpes simplex virus-induced pneumonia (light grey column) (n=2 to 4, duplicates). **B**, Assessment of IL-17A and IL-23 protein in BAL supernatants of first week following onset of clinical symptoms of patient 1 and patient 2. Control group, HSV and bacterial were same samples as previously described. (n=2 to 4, duplicates) **C**, Assessment of IL-17A and IL-23 protein in sera of the 30 days following MERS-CoV infection in patient 1 (black line) and patient 2 (grey line). (n=2 to 4, duplicates). Measurement obtained between D0–3: day 0 and day 3, D4–7: day 4 and 7, D8–14: day 8 and 14, D15–21: day 15 and 21, D22–30: day 22 and 30. doi:10.1371/journal.pone.0088716.g004

many questions that remain to be answered, options for treatment are a major concern for the medical community. Although it is very difficult to draw a simple line from a clinical observation to a therapeutic protocol, the analysis of the host response is a cornerstone in the design of relevant approaches. This report characterizes the immune response of two patients with different outcomes and highlights the critical role of $IFN\alpha$ in the innate immune response to orchestrate an early adaptive Th-1 response, mediated by IL-12 and $IFN\gamma$, against MERS-CoV infection.

Previous studies reported the critical role of $IFN\alpha$, orchestrating the early immune response against viral infection, such as SARS-CoV [1,7,15], by up-regulating the expression of MHC class I and II [4]. In our study we show in patient 1, who presented a poor outcome, a significant decrease in receptors and regulators involved in the recognition of MERS-CoV such as RIG-1, MDA5, and IRF3-7. The decrease in IRF3 and 7 was associated with a major decrease in $IFN\alpha$ expression and secretion in BAL as well as in serum. Josset *et al.* demonstrated in an *in vitro* microarray analysis that MERS-CoV, like SARS-CoV [7], suppressed antigen presentation pathways by down-regulating type I and II major histocompatibility complex (MHC) genes [17]. To assess the consequences of this down-regulation, we quantified the production of two key cytokines, IL-12 and $IFN\gamma$, involved in the activation of lymphocytes into T CD4+ Th-1 cells. Our results show a clear difference between the two patients with a significant

increase of both IL-12 and $IFN\gamma$ in patient 2. The analysis of viral clearance shows that patient 2 rapidly cleared the infection with negative blood samples at the end of the first week, while MERS-CoV was detected in serum from patient 1 until death.

Although it is impossible to conclude on the basis of these preliminary data, it can be suggested that the IFN response, consistent with the medical literature [1], is a major component of successful anti-viral host response.

Previous studies focusing on the outcome of SARS-CoV infected patients showed that an early and robust innate immune response mediated by type-1 IFN led to high level of IFN -stimulated cytokines and was required for the development of an effective adaptive immune response [14]. Further supporting our observation, patient 1 exhibited persistent viral replication with high levels of CXCL10, a type-1 IFN triggered chemokine [14]. Conversely, patients who survived could promote type-1 IFN response, control viral replication, and down-regulate this response, exhibiting low levels of CXCL10 when recovering from infection. IL-10, a cytokine associated with Th-2 adaptive immune response that represses $IFN\gamma$ secretion [20], was associated with poor outcome in the early stage of SARS-CoV infection [7]. Here we observed that patient 1 showed a persistent IL-10 secretion instead of antiviral Th-1 immune response that may have contributed to poor outcome.

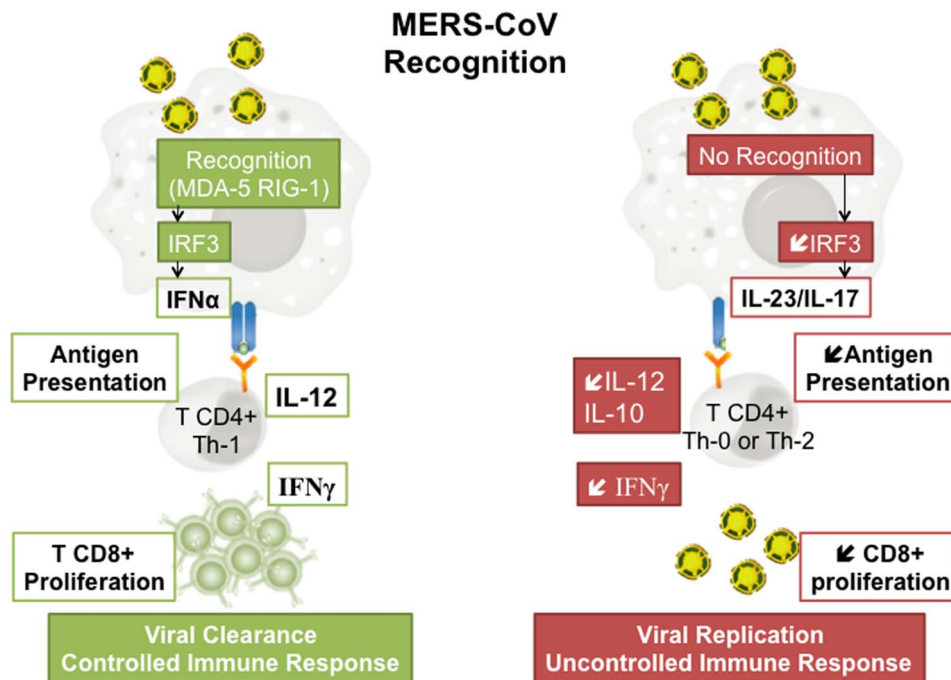


Figure 5

Figure 5. Schematic representation of key responses to MERS-CoV related to outcome. Left panel: Coronavirus are recognized by the immune system through the activation of cytosolic and membranous pattern recognition receptors (MDA-5 and RIG-1). This activation triggers IRF 3 which leads to the production of IFN α . IFN activates anti viral effectors like T CD8+ cells allowing viral clearance. Right panel: In the absence of recognition, the decrease in IRF 3 is associated to a decreased production of IL 12 and IFN γ . IL 10 production further represses IFN γ secretion leading to a decreased CD8 T lymphocytes proliferation and an increased viral replication. doi:10.1371/journal.pone.0088716.g005

Finally, Josset *et al.* previously showed that MERS-CoV could promote IL-17 expression in vitro[17]. We confirmed this observation in the lungs and sera of patient 1, and to a lesser extent in patient 2. Recently, a study reported the critical role of IRF3 in CD8+ T lymphocytes to promote IL-17 secretion. Indeed, IRF3 directly interacts with ROR γ t (RAR-related orphan receptor gamma) and avoids the activation of the IL-17 promoter and the Th-17 differentiation of the T CD8+ lymphocytes[21]. Here we show that patient 1 did not express IRF3 in response to MERS-CoV and secreted low levels of IFN α but high levels of IL-17, in the lungs and serum. Conversely, patient 2 expressed high levels of IRF3 (Figure 1C) that triggered IFN α secretion in the lungs, but IL-17 secretion was decreased. IRF3 in humans exhibits high polymorphism[22] that may explain the difference between immune responses and outcomes of patients 1 and 2. Further investigations may be required and the sequencing of this key protein in our two patients may contribute to better understand host susceptibility to MERS-CoV infection.

Conclusion

Based on the analysis of the clinical course of two patients with completely different outcome, we emphasize the major role of the host immune response in MERS-CoV infection. Our results

References

1. Frieman M, Heise M, Baric R (2008) SARS coronavirus and innate immunity. *Virus Res* 133: 101–112. doi:10.1016/j.virusres.2007.03.015.
2. Zaki AM, van Boheemen S, Bestebroer TM, Osterhaus ADME, Fouchier RAM (2012) Isolation of a novel coronavirus from a man with pneumonia in Saudi Arabia. *N Engl J Med* 367: 1814–1820. doi:10.1056/NEJMoa1211721.
3. Assiri A, Al-Tawfiq JA, Al-Rabceah AA, Al-Rabiah FA, Al-Hajjar S, et al. (2013) Epidemiological, demographic, and clinical characteristics of 47 cases of Middle

suggest a key role of the interferon pathway. From this hypothesis, a treatment with alpha interferon represents an attractive pathophysiologic approach in this disease. Several authors suggest that coronaviruses could evade the host response and blunt the interferon pathway. Patients able to trigger IFN production could optimize viral clearance and develop a controlled immune response, while the absence of pathogen recognition could lead to viral replication and uncontrolled immune response (Figure 5). Administration of interferon could therefore enhance the host response. This molecule has been suggested in the recent review published by Momattin *et al.*[23].

Acknowledgments

We thank S. Herwegh and R. Courcol (M.D. PhD) for the authorization to process infected samples into the biosafety level 3 laboratory of the institute of Microbiology. We also thank P. Ramon (M.D.) for control BAL samples.

Author Contributions

Conceived and designed the experiments: EF JP AG DM BG. Performed the experiments: EF PB CF LM AG. Analyzed the data: EF MT EK BG. Contributed reagents/materials/analysis tools: SD RD PG. Wrote the paper: EF JP AG EK BG.

4. Katze MG, He Y, Gale M (2002) Viruses and interferon: a fight for supremacy. *Nature Reviews Immunology* 2: 675–687. Available: <http://www.nature.com/doifinder/10.1038/nri888>.

5. Takeuchi O, Akira S (2008) MDA5/RIG-I and virus recognition. *Current opinion in immunology* 20: 17–22. Available: <http://linkinghub.elsevier.com/retrieve/pii/S0952791508000046>.
6. Blander JM, Sander LE (2012) Beyond pattern recognition: five immune checkpoints for scaling the microbial threat. *Nature Reviews Immunology* 12: 215–225. Available: <http://eutils.ncbi.nlm.nih.gov/entrez/eutils/elink.fcgi?dbfrom=pubmed&id=22362354&retmode=ref&cmd=prlinks>.
7. Perlman S, Netland J (2009) Coronaviruses post-SARS: update on replication and pathogenesis. *Nat Rev Microbiol* 7: 439–450. doi:10.1038/nrmicro2147.
8. Yoneyama M, Kikuchi M, Natsukawa T, Shinobu N, Imaizumi T, et al. (2004) The RNA helicase RIG-I has an essential function in double-stranded RNA-induced innate antiviral responses. *Nat Immunol* 5: 730–737. Available: <http://www.nature.com/doi/10.1038/ni1087>.
9. Welsh RM, Waggoner SN (2013) NK cells controlling virus-specific T cells: Rheostats for acute vs. persistent infections. *Virology* 435: 37–45. Available: <http://eutils.ncbi.nlm.nih.gov/entrez/eutils/elink.fcgi?dbfrom=pubmed&id=23217614&retmode=ref&cmd=prlinks>.
10. Taniguchi T, Takaoka A (2001) A weak signal for strong responses: interferon-alpha/beta revisited. *Nature Reviews Molecular Cell Biology* 2: 378–386. Available: <http://eutils.ncbi.nlm.nih.gov/entrez/eutils/elink.fcgi?dbfrom=pubmed&id=11331912&retmode=ref&cmd=prlinks>.
11. de Wilde AH, Raj VS, Oudshoorn D, Bestebroer TM, van Nieuwkoop S, et al. (2013) MERS-coronavirus replication induces severe in vitro cytopathology and is strongly inhibited by cyclosporin A or interferon- treatment. *J Gen Virol* 94: 1749–1760. doi:10.1099/vir.0.052910-0.
12. Guery B, Poissy J, Mansouf El L, Séjourné C, Ettahar N, et al. (2013) Clinical features and viral diagnosis of two cases of infection with Middle East Respiratory Syndrome coronavirus: a report of nosocomial transmission. *Lancet* 381: 2265–2272. doi:10.1016/S0140-6736(13)60982-4.
13. See H, Wark P (2008) Innate immune response to viral infection of the lungs. *Paediatric respiratory reviews* 9: 243–250. Available: <http://eutils.ncbi.nlm.nih.gov/entrez/eutils/elink.fcgi?dbfrom=pubmed&id=19026365&retmode=ref&cmd=prlinks>.
14. Cameron MJ, Ran L, Xu L, Danesh A, Bermejo-Martin JF, et al. (2007) Interferon-mediated immunopathological events are associated with atypical innate and adaptive immune responses in patients with severe acute respiratory syndrome. *Journal of Virology* 81: 8692–8706. Available: <http://eutils.ncbi.nlm.nih.gov/entrez/eutils/elink.fcgi?dbfrom=pubmed&id=17537853&retmode=ref&cmd=prlinks>.
15. Zhu M (2004) SARS Immunity and Vaccination. *Cell Mol Immunol* 1: 193–198. Available: <http://eutils.ncbi.nlm.nih.gov/entrez/eutils/elink.fcgi?dbfrom=pubmed&id=16219167&retmode=ref&cmd=prlinks>.
16. Reghunathan R, Jayapal M, Hsu L-Y, Chng H-H, Tai D, et al. (2005) Expression profile of immune response genes in patients with Severe Acute Respiratory Syndrome. *BMC immunology* 6: 2. Available: <http://eutils.ncbi.nlm.nih.gov/entrez/eutils/elink.fcgi?dbfrom=pubmed&id=15655079&retmode=ref&cmd=prlinks>.
17. Josset L, Menachery VD, Gralinski LE, Agnihothram S, Sova P, et al. (2013) Cell Host Response to Infection with Novel Human Coronavirus EMC Predicts Potential Antivirals and Important Differences with SARS Coronavirus. *MBio* 4: e00165–13–e00165–13. doi:10.1128/mBio.00165-13.
18. Wang Q, Zhou J, Zhang B, Tian Z, Tang J, et al. (2013) Hepatitis B virus induces IL-23 production in antigen presenting cells and causes liver damage via the IL-23/IL-17 axis. *PLoS Pathog* 9: e1003410. Available: <http://eutils.ncbi.nlm.nih.gov/entrez/eutils/elink.fcgi?dbfrom=pubmed&id=23825942&retmode=ref&cmd=prlinks>.
19. Kumar P, Chen K, Kolls JK (2013) Th17 cell based vaccines in mucosal immunity. *Current opinion in immunology* 25: 373–380. Available: <http://eutils.ncbi.nlm.nih.gov/entrez/eutils/elink.fcgi?dbfrom=pubmed&id=23669353&retmode=ref&cmd=prlinks>.
20. Sabat R (2010) IL-10 family of cytokines. *Cytokine and Growth Factor Reviews* 21: 315–324. Available: <http://eutils.ncbi.nlm.nih.gov/entrez/eutils/elink.fcgi?dbfrom=pubmed&id=21112807&retmode=ref&cmd=prlinks>.
21. Ysebrant de Lendonck L, Tonon S, Nguyen M, Vandevenne P, Welsby I, et al. (2013) Interferon regulatory factor 3 controls interleukin-17 expression in CD8 T lymphocytes. *Proc Natl Acad Sci USA*. Available: <http://eutils.ncbi.nlm.nih.gov/entrez/eutils/elink.fcgi?dbfrom=pubmed&id=23918362&retmode=ref&cmd=prlinks>.
22. Moore TC, Al-Salleeh FM, Brown DM, Petro TM (2011) IRF3 polymorphisms induce different innate anti-Theiler's virus immune responses in RAW264.7 macrophages. *Virology* 418: 40–48. Available: <http://eutils.ncbi.nlm.nih.gov/entrez/eutils/elink.fcgi?dbfrom=pubmed&id=21810534&retmode=ref&cmd=prlinks>.
23. Momattin H, Mohammed K, Zumla A, Memish ZA, Al-Tawfiq JA (2013) Therapeutic Options for Middle East Respiratory Syndrome Coronavirus (MERS-CoV) – possible lessons from a systematic review of SARS-CoV therapy. *Int J Infect Dis*: 1–7. doi:10.1016/j.ijid.2013.07.002.