



**HAL**  
open science

## Sensitivity of different methods for simultaneous evaluation of emissivity and temperature through multispectral infrared thermography simulation

Thibaud Toullier, Jean Dumoulin, Laurent Mevel

### ► To cite this version:

Thibaud Toullier, Jean Dumoulin, Laurent Mevel. Sensitivity of different methods for simultaneous evaluation of emissivity and temperature through multispectral infrared thermography simulation. EGU 2019 - European Geoscience Union, Apr 2019, Vienne, Austria. 21, pp.1, 2019. hal-02264677

**HAL Id: hal-02264677**

**<https://hal.science/hal-02264677>**

Submitted on 7 Aug 2019

**HAL** is a multi-disciplinary open access archive for the deposit and dissemination of scientific research documents, whether they are published or not. The documents may come from teaching and research institutions in France or abroad, or from public or private research centers.

L'archive ouverte pluridisciplinaire **HAL**, est destinée au dépôt et à la diffusion de documents scientifiques de niveau recherche, publiés ou non, émanant des établissements d'enseignement et de recherche français ou étrangers, des laboratoires publics ou privés.



# Sensitivity of different methods for simultaneous evaluation of emissivity and temperature through multispectral infrared thermography simulation

## Introduction and nomenclature

This study focuses on the simultaneous evaluation of temperature and emissivity with multispectral infrared thermography (IRT). It leans on the study and development of an IRT simulator able to address 3D scene in static or dynamic configuration. The sensitivity of 4 different temperature and emissivity joint estimation methods are then evaluated.

$\Delta\lambda_i$	Wavelength interval of $i^{\text{th}}$ band	$B_{k,\Delta\lambda_i}$	Radiosity of patch $k$ on $\Delta\lambda_i$
$\epsilon_{k,\Delta\lambda_i}$	Emissivity of patch $k$ in $\Delta\lambda_i$	$M_{k,\Delta\lambda_i}$	Emittance of patch $k$ on $\Delta\lambda_i$
$T$	Object's temperature	$V_{kj} = \{0,1\}$	Visibility between patches $k$ and $j$

## IRT Simulator through the radiosity method

### View factor

Geometrical coefficient for radiative exchange between two diffuse elements

$$F_{1 \rightarrow 2} = \int_{A_1} \int_{A_2} \frac{\cos(\theta_1) \cos(\theta_2)}{\pi r^2} dA_1 dA_2$$

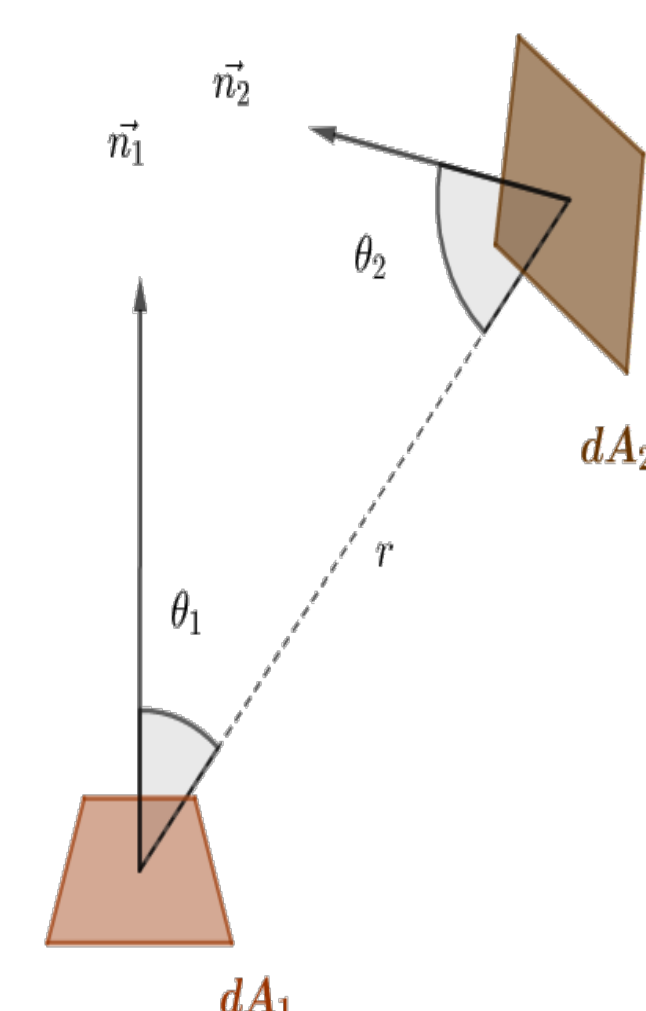


Fig. 1 : Geometry for two infinitesimal elements

### Radiosity equation<sup>1</sup>

$$B_{k,\Delta\lambda_i} = M_{k,\Delta\lambda_i} + (1 - \epsilon_{k,\Delta\lambda_i}) \sum_{j=1, j \neq k}^{j=N_{\text{elements}}} V_{kj} F_{k \rightarrow j} B_{j,\Delta\lambda_i}$$

### C++ Implementation

- GPU acceleration through OpenGL's API
- User-friendly graphical interface
- Python interpreter for user-case scenarios
- Use models from literature :  
 ⇒ Get the solar spectral radiation at ground  
 ⇒ Sensor model for radiative illumination to image

## 3D Model

A target with 4 different materials properties

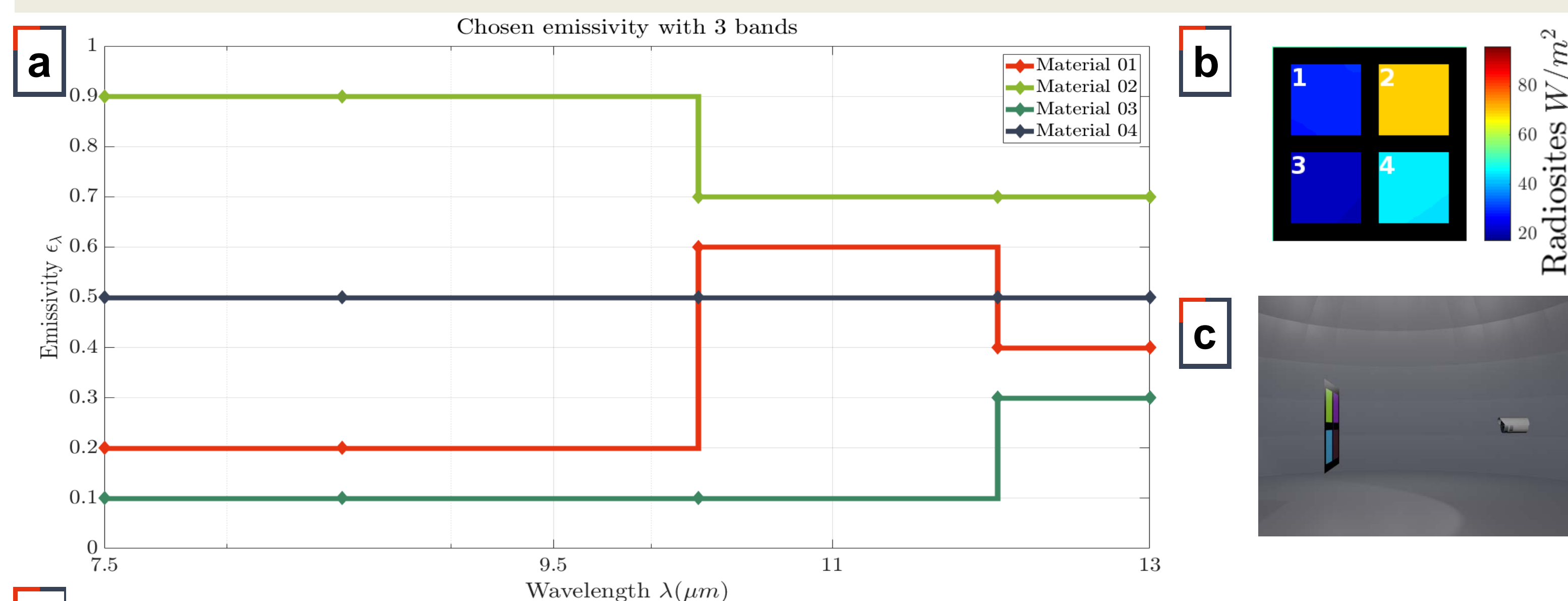


Fig. 2 : (a) Spectral emissivity distribution of 4 artificial materials for the target in the  $7.5\mu\text{m} - 13\mu\text{m}$  bandwidth (b) Simulation results for  $T = 313.15\text{K}$  (c) Camera, target and environment in the visible (d) Temperature ranges

	T (K)	T (K)		T (K)
Simulation 1	293.15	Simulation 3	333.15	
Simulation 2	313.15	Simulation 4	353.15	

## Temperature and emissivity retrieval

With Bouguer's law and for infinitesimal surfaces<sup>2</sup>:

$$E_{\text{sensor},\Delta\lambda_i} = \frac{I_{\text{object},\Delta\lambda_i} \cos(\theta_{\text{sensor}})}{r^2} = \frac{\cos(\theta_{\text{object}}) \cos(\theta_{\text{sensor}}) dS_{\text{object}}}{r^2} L_{\text{object}}(\Delta\lambda_i, T)$$

⇒ Undetermined system with  $\epsilon_{\Delta\lambda_i}$  and  $T$  unknowns

$$E_{\text{capteur},\Delta\lambda_i} = g(\theta_{\text{capteur}}, \theta_{\text{objet}}, r) \epsilon_{\Delta\lambda_i} L^o(\Delta\lambda_i, T)$$

## Compared methods

### Non linear optimization

$$\text{argmin} \sum_{i=1}^N \left[ \gamma_{\Delta\lambda_i} - \epsilon_{\Delta\lambda_i} \int_{\Delta\lambda_i} L^o(\lambda, T) d\lambda \right]^2$$

$$\epsilon_{\Delta\lambda_i} = \sum_{j=0}^M a_j \Phi_j(\Delta\lambda_i); \quad 0 \leq \epsilon_{\Delta\lambda_i} \leq 1;$$

$$(\Phi_j)_{1 \leq j \leq M} \text{ orthonormal basis (Tchebychev-1)}$$

$$200\text{K} \leq T \leq 400\text{K}$$

### « Temperature Emissivity (TES) Method »<sup>3</sup>

$$T(\Delta\lambda_i) = L^o^{-1} \left[ \frac{\gamma_{\Delta\lambda_i} - L_{\text{env}}(\Delta\lambda_i)}{\epsilon_{\text{max}}} + L_{\text{env}}(\Delta\lambda_i) \right],$$

$$\tilde{T} = \max_{\Delta\lambda_i} (\text{sgn}(\gamma_{\Delta\lambda_i} - L_{\text{env}}(\Delta\lambda_i)) T(\Delta\lambda_i))$$

$$\tilde{\epsilon}(\Delta\lambda_i) = \frac{\gamma_{\Delta\lambda_i} - L_{\text{env}}(\Delta\lambda_i)}{L^o(\Delta\lambda_i, \tilde{T}) - L_{\text{env}}(\Delta\lambda_i)}, \quad \beta(\Delta\lambda_i) = \frac{\tilde{\epsilon}(\Delta\lambda_i)}{\tilde{\epsilon}(\Delta\lambda_i)}$$

$$\epsilon_{\text{min}} \approx a - b(\beta_{\text{max}} - \beta_{\text{min}})^c$$

$$\hat{\epsilon}(\Delta\lambda_i) = \beta(\Delta\lambda_i) \frac{\epsilon_{\text{min}}}{\beta_{\text{min}}}$$

### Multi-temperature<sup>4</sup>

$$\text{argmin} \sum_{i=1}^N \left[ \gamma_{\Delta\lambda_i, T_1} - \epsilon_{\Delta\lambda_i} \int_{\Delta\lambda_i} L^o(\lambda, T_1) d\lambda \right]^2 + \left[ \gamma_{\Delta\lambda_i, T_2} - \epsilon_{\Delta\lambda_i} \int_{\Delta\lambda_i} L^o(\lambda, T_2) d\lambda \right]^2$$

$$\epsilon_{\Delta\lambda_i} = \sum_{j=0}^M a_j \Delta\lambda_i^j; \quad 0 \leq \epsilon_{\Delta\lambda_i} \leq 1; \quad 200\text{K} \leq T_1 \leq 400\text{K}; \quad 200\text{K} \leq T_2 \leq 400\text{K}$$

### Bayesian (Monte-Carlo Markov Chain (MCMC))<sup>5</sup>

A priori known laws:

$$\epsilon \approx \mathcal{N}(\mu_\epsilon, \Sigma_\epsilon)$$

$$T \approx \mathcal{U}(T_{\text{min}}, T_{\text{max}})$$

$$\text{With } \mu_{\text{epsilon}} = \begin{pmatrix} 0.6 \\ 0.6 \\ 0.6 \end{pmatrix}, \Sigma_{\text{epsilon}} = \begin{pmatrix} 1 & 0.8 & 0.8 \\ 0.8 & 1 & 0.8 \\ 0.8 & 0.8 & 1 \end{pmatrix}$$

Draw variables  $\epsilon$  and  $T$  by using the targeted distributions  $p(\epsilon|\gamma)$  and  $p(T|\gamma)$  with a *Slice-within-Gibbs* sampler.

## Results

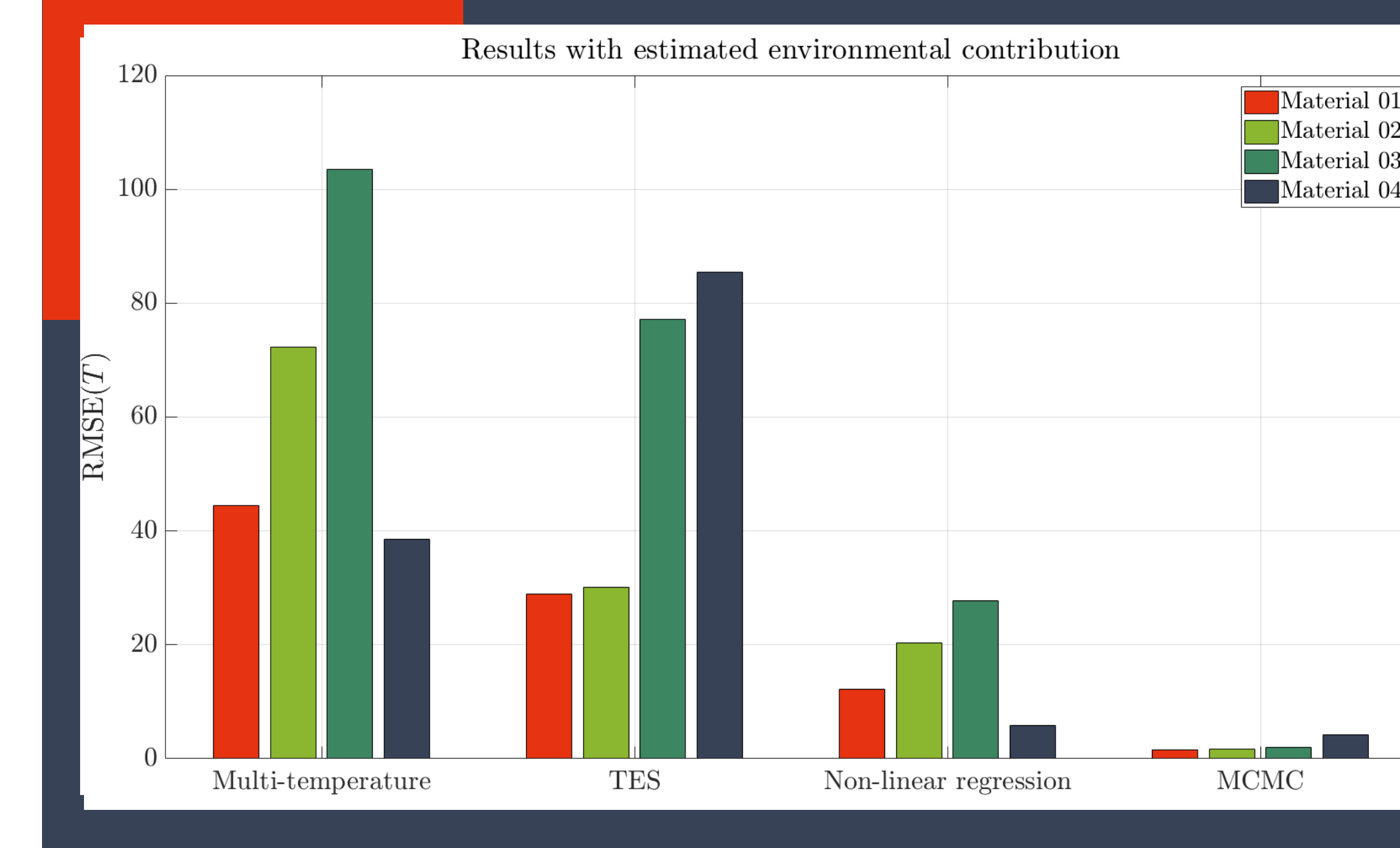


Fig. 3 : Temperature estimation for the 4 different methods

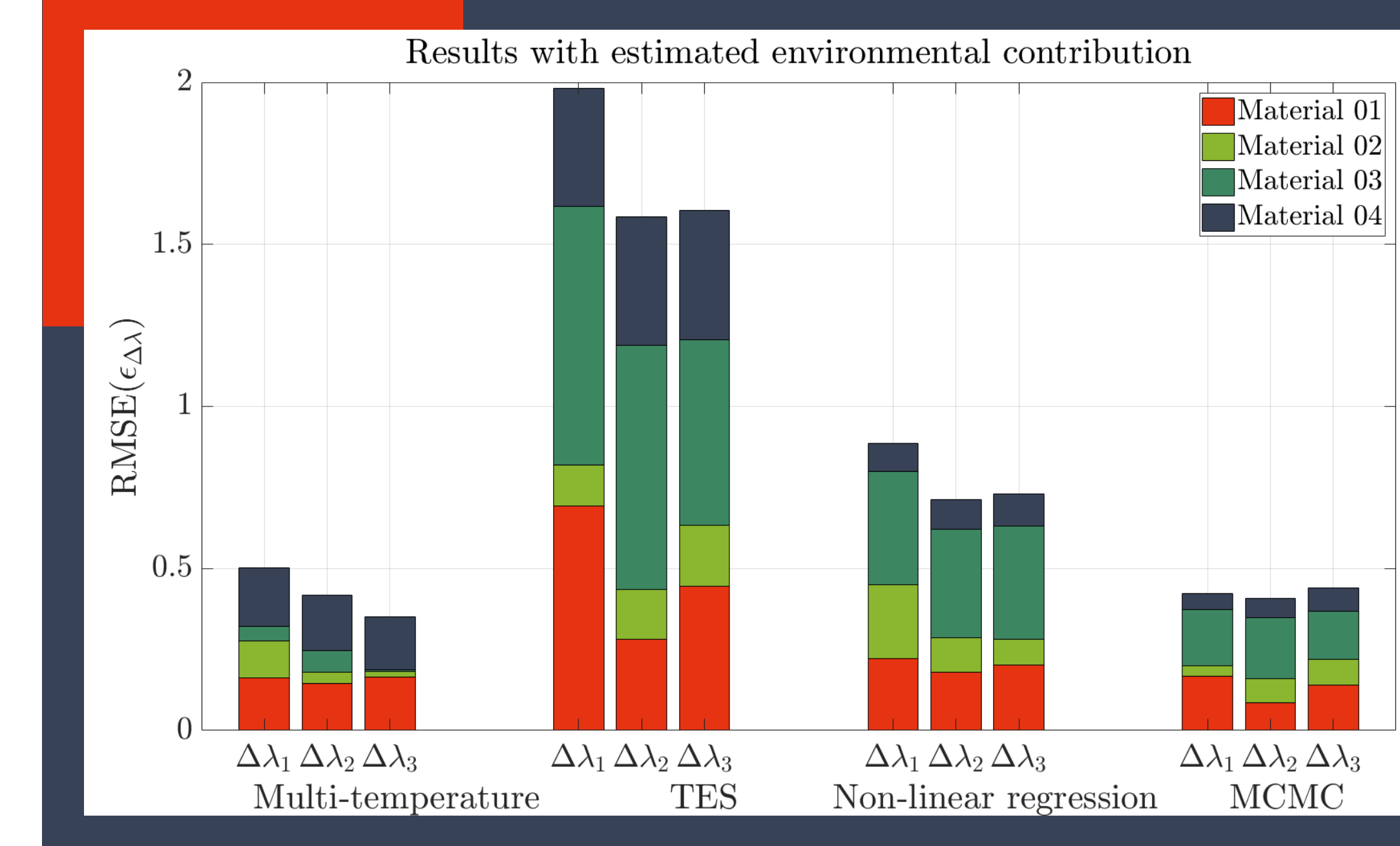


Fig. 4 : Emissivity estimation for the 4 different methods

### Stopping criteria

- Optimization algorithms ⇒ local minimum
- Metaheuristic ⇒ 10000 iterations

$$RMSE(x) = \frac{1}{N_{\text{simu}} \times N_{\text{pixels}}} \sum_{k=1}^{N_{\text{simu}}} \sum_{j=1}^{N_{\text{pixels}}} \sqrt{(x_{k,j} - x_{\text{objective},k})^2}$$

### Observations

- Non linear methods find a local minimum without any guarantee on the physical solution
- TES relies on a correlation based on a database linked with airborne based applications
- MCMC is a metaheuristic that requires a long time and effort to be computed

## Conclusion and perspectives

### Conclusion:

- Comparison of 4 methods to estimate simultaneously emissivity and temperature
- Study and development of a 3D scene IRT simulator

### Perspectives:

- Add measurement noises in the simulation process to observe their effect
- Combine temporal and spatial information in Bayesian methods for further improvements of joint estimation

## Bibliography

- [1] M. F. Cohen, S. E. Chen, J. R. Wallace, and D. P. Greenberg. A progressive refinement approach to fast radiosity image generation. ACM SIGGRAPH computer graphics, 22(4) :75–84, 1988.
- [2] J.R. Howell, R. Siegel, and M.P. Pinar. Thermal Radiation Heat Transfer. CRC Press, 5th edition, 2010.
- [3] A. Gillespie, S. Rokugawa, T. Matsunaga, J. S. Cothorn, S. Hook, and A. B. Kahle. A Temperature and Emissivity Separation Algorithm for Advanced Spaceborne Thermal Emission and Reflection Radiometer (ASTER) Images. IEEE TRANSACTIONS ON GEOSCIENCE AND REMOTE SENSING, 36(4) :14, 1998.
- [4] Jean-Claude Krapez. Radiative Measurements of Temperature. In Thermal Measurements and Inverse Techniques, Heat transfer. CRC Press, Boca Raton, FL, 2011. OCLC : ocn587104377.
- [5] J. N. Ash and J. Meola. Temperature-emissivity separation for LWIR sensing using MCMC. volume 9840, page 984010. International Society for Optics and Photonics, May 2016.