



**HAL**  
open science

## Detection of Spatio-Temporal Recurrent Patterns in Dynamical Systems

Pietro Bonizzi, Ralf Peeters, Stef Zeemering, Arne van Hunnik, Olivier Meste, Joël Karel

► **To cite this version:**

Pietro Bonizzi, Ralf Peeters, Stef Zeemering, Arne van Hunnik, Olivier Meste, et al.. Detection of Spatio-Temporal Recurrent Patterns in Dynamical Systems. *Frontiers in Applied Mathematics and Statistics*, 2019, 5, 10.3389/fams.2019.00036 . hal-02262431

**HAL Id: hal-02262431**

**<https://hal.science/hal-02262431>**

Submitted on 23 Oct 2021

**HAL** is a multi-disciplinary open access archive for the deposit and dissemination of scientific research documents, whether they are published or not. The documents may come from teaching and research institutions in France or abroad, or from public or private research centers.

L'archive ouverte pluridisciplinaire **HAL**, est destinée au dépôt et à la diffusion de documents scientifiques de niveau recherche, publiés ou non, émanant des établissements d'enseignement et de recherche français ou étrangers, des laboratoires publics ou privés.



# Detection of Spatio-Temporal Recurrent Patterns in Dynamical Systems

Pietro Bonizzi<sup>1</sup>, Ralf Peeters<sup>1\*</sup>, Stef Zeemering<sup>2</sup>, Arne van Hunnik<sup>2</sup>, Olivier Meste<sup>3</sup> and Joël Karel<sup>1</sup>

<sup>1</sup> Department of Data Science and Knowledge Engineering, Maastricht University, Maastricht, Netherlands, <sup>2</sup> Department of Physiology, Maastricht University Medical Centre, Maastricht, Netherlands, <sup>3</sup> Université Côte d'Azur, CNRS, Nice, France

## OPEN ACCESS

### Edited by:

Norbert Marwan,  
Potsdam-Institut für  
Klimafolgenforschung (PIK), Germany

### Reviewed by:

Alessandro Giuliani,  
Istituto Superiore di Sanità (ISS), Italy  
Chen Cheng-Bang,  
Pennsylvania State University,  
United States

### \*Correspondence:

Ralf Peeters  
ralf.peeters@maastrichtuniversity.nl

### Specialty section:

This article was submitted to  
Dynamical Systems,  
a section of the journal  
Frontiers in Applied Mathematics and  
Statistics

**Received:** 29 May 2019

**Accepted:** 10 July 2019

**Published:** 02 August 2019

### Citation:

Bonizzi P, Peeters R, Zeemering S,  
van Hunnik A, Meste O and Karel J  
(2019) Detection of Spatio-Temporal  
Recurrent Patterns in Dynamical  
Systems.  
Front. Appl. Math. Stat. 5:36.  
doi: 10.3389/fams.2019.00036

**Background:** The study of repetitive (quasi-periodic) spatio-temporal patterns in complex dynamical systems with a well defined spatial structure may be complicated if the recurrent behavior is confined to specific local regions, where it lasts for a limited time. This can decrease the efficacy of recurrence plots (RPs) in recognizing such patterns. It then becomes important to first detect whether repetitive spatio-temporal patterns are present, and if so, where they are located (both in space and time), to facilitate a focused RP analysis approach. This study proposes a novel framework for spatio-temporal detection of local recurrence of a quasi-periodic nature in complex dynamical systems. A motivating application for this framework is the analysis of atrial fibrillation to better understand the heart tissue involved.

**Methods:** The spatio-temporal data observed from the system are decomposed by means of principal component analysis to identify the points in the spatial structure exhibiting quasi-periodic recurrent patterns. The frequency content of the principal components is used to determine if such patterns are present, and the corresponding eigenvectors are used to identify the points associated with those components. Geometric information about proximity of these points is used to cluster them into local regions. A sliding temporal window is used to detect the start and end of each pattern.

**Results:** A first simulation shows how the proposed framework can handle multiple recurrent patterns simultaneously occurring in a spatial structure of a dynamical system. A second simulation shows how the method can handle more complicated patterns like 2D nonlinear spiraling waves, typical of many diffusion processes. The framework is then applied to real data to detect recurrent patterns in wave fronts propagating inside the heart during atrial fibrillation. This analysis can unveil regions of recurrence in the atria that were not visible with standard RP analysis.

**Conclusion:** A novel framework for detecting spatio-temporal repetitive patterns in complex dynamical systems is introduced. It allows retrieve the correct recurrences associated with known 2D traveling waves, while the same information is not visible with standard RP analysis. This framework can be effectively used to investigate recurrence in real dynamical systems as cardiac arrhythmia.

**Keywords:** recurrence plots, dynamical systems, spatio-temporal detection, principal component analysis, spatio-temporal data

## 1. INTRODUCTION

Complex dynamical systems arise in many fields of science, e.g., in biology, physics, climatology, and engineering. Those are systems exhibiting nonlinear, non-stationary, and possibly even chaotic behavior which is generally difficult to model or analyze. Several dynamical systems are also characterized by a well defined spatial organization (like the human brain for instance), and to properly describe their dynamics, one must take into account both their spatial and temporal properties. A way to achieve this is by analyzing the spatio-temporal data that can be observed from the complex system. In this respect, an important observation is that dynamical systems tend to return to former states, and this recurrence can be recognized as a fundamental characteristic of many dynamical systems [1] which can be used to study their behavior. Eckmann et al. introduced the method of Recurrence Plots (RPs) to visualize and quantify the recurrent behavior of the phase-space trajectory of a dynamical system [2]. Depending on the distance measure used, RPs are known to characterize the underlying trajectory up to isometry, and an underlying time series up to a sign choice under mild conditions [3, 4]. Once the RP of a dynamical system is obtained, Recurrence Quantification Analysis (RQA) [5] can be employed to further quantify the properties of its recurrent behavior. RPs have been successfully used in numerous fields of research such as astrophysics, earth sciences, biology and physiology, and engineering [1].

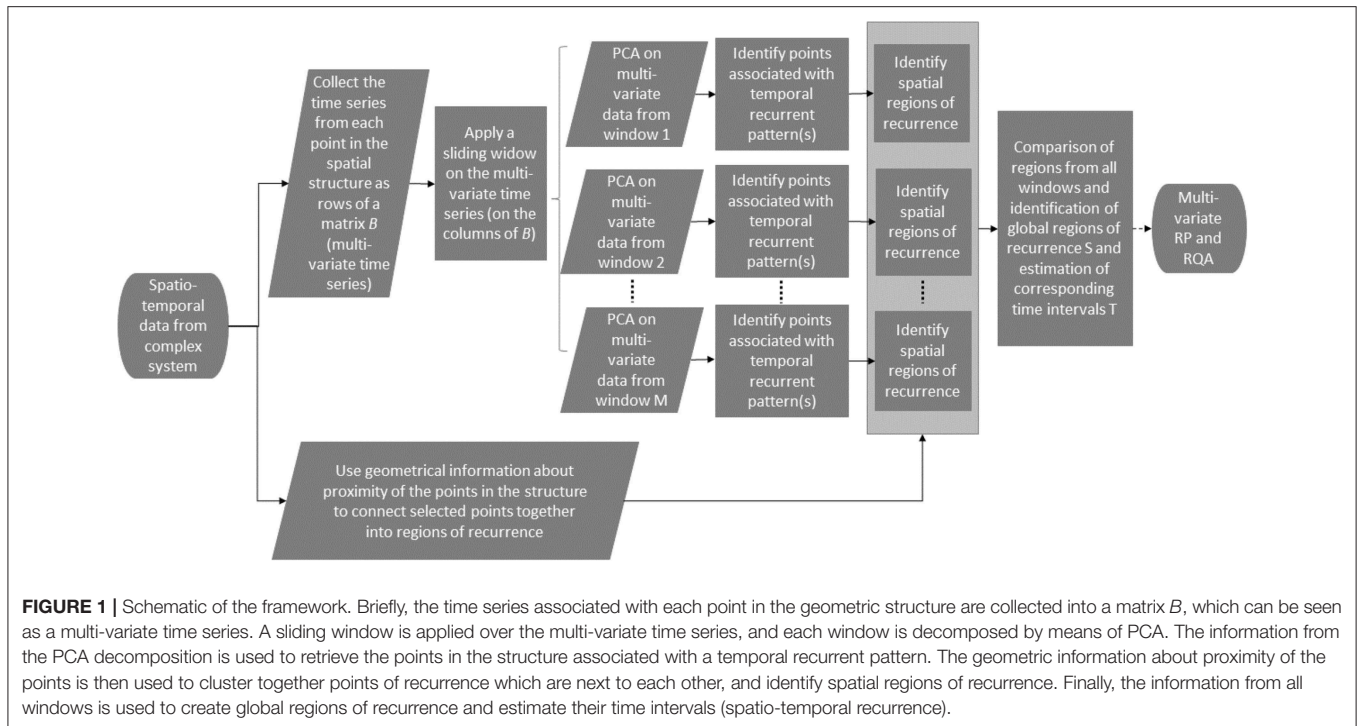
Originally, RPs were developed for the study of phase-space trajectories, or for uni-variate time series through time-delay embeddings. Several extensions have been proposed to deal with multi-variate time series data and with spatio-temporal processes which can also exhibit typical recurrent structures of interest (the interested reader is invited to read section 2 for more background information about multi-variate and spatial recurrence plots). Those approaches for multi-variate RPs and their accompanying RQA generally exploit the whole record of spatio-temporal data observed from the complex dynamical system under investigation; they do not aim to find a subset on which to perform a more focused and informative analysis. However, for a given system with an arbitrary spatial or geometric structure, recurrence (perceived as quasi-periodic repetitive patterns) may occur in localized regions of this structure only (limited over space), and may last for just a limited time (relative to the overall time span of the data). Not focusing on such most informative spatio-temporal regions of interest in the data, may hinder the identification and characterization of complex dynamics with RQA, as relevant information becomes obscured by getting drowned in uninformative data and noise. In addition, from a computational point of view, it is also inefficient to build RPs and perform RQA on complete multi-variate datasets if one is predominantly interested in spatio-temporally localized recurrences. We therefore argue that, before carrying out multi-variate RPs and RQA, it is important to first detect if, where, and when recurrence patterns are present and recognizable. This will allow one to select the spatial region(s) and time interval(s) of interest for performing a more efficient

and accurate analysis of recurrence, leaving out much of the unwanted disinformation.

In this study, we propose a novel such framework for the detection of spatio-temporal recurrence in complex dynamical systems. This framework focuses on a specific type of recurrence, namely, recurrences from repetitive (relatively short lived) quasi-periodic oscillatory patterns, with a limited frequency bandwidth. This kind of recurrence is important in signal processing applications, especially in the field of medicine from which we shall present an example with real data. The framework (see **Figure 1**) is designed to work with spatial structures of arbitrary geometry (which can be graph-based and need not be confined to regular grids). It first uses Principal Component Analysis (PCA) to identify the points in the geometric structure associated with a local recurrent pattern, and then clusters those points to find the geometric regions where the recurrent patterns are located. In order to estimate the corresponding time interval of each recurrent pattern, a time windowing procedure is developed. The effectiveness of this method is illustrated with two numerical simulations. The practical relevance of the framework of this study is then demonstrated by means of an application with real data. In this application, the goal is to identify recurrence in atrial fibrillation (AF) propagation patterns in high-density contact mapping in a sheep model of acute AF. AF is a cardiac arrhythmia characterized by an irregular electrical activity in the atria, the upper chambers of the heart. AF may be driven by specific regions within the atria that spontaneously generate electrical activity in an uncoordinated way, or by self-perpetuating quasi-periodic re-entry patterns of propagation of electrical wave fronts, which may happen both globally (at the level of the whole atria), or locally (at the level of sub-regions of the atria). Therefore wave front propagation during AF is a complex phenomenon, which may be localized both in time and space, and which provides a natural application for the framework proposed in this study [6]. The results presented in this paper demonstrate the applicability and validity of the proposed framework for the detection of spatio-temporally localized recurrence in complex dynamical systems.

## 2. BACKGROUND ON MULTI-VARIATE AND SPATIAL RECURRENCE PLOTS

As mentioned in the Introduction, several extensions of RP and RQA have been proposed to deal with multi-variate time series data and with spatial data. Romano et al. [7] proposed to calculate RPs of multi-variate time series based on joint recurrence in phase space. This approach focuses on studying the phase synchronization of two bidirectionally coupled chaotic systems, depending on their coupling strength, and frequency mismatch. Nichols et al. [8] used RP and RQA for damage detection in structures, and they showed how it can be extended to include multi-variate observations coming from a spatially distributed network of sensors. The authors proposed a simple embedding procedure for multi-variate time series, in which each embedded vector is built by taking the samples from all



sensors at a given time instant. We used a similar idea to generate multi-variate RPs in this study, as discussed in section 3.2.

When the focus is on spatial data structures characterized by high-dimension and geometric correlation patterns (different from time series data), traditional RP is limited in analyzing it, since recurrence may occur in any spatial direction (and not simply over time). In this respect, Vasconcelos et al. [9] investigated recurrence in spatial data by separating the higher-dimensional objects into a large number of one-dimensional data series (space separated coordinates), and by analyzing them separately. This approach was used to study the distribution of spatially coherent structures at a fixed time. Marwan et al. [10] extended this one dimensional approach to a higher-dimensional one, still focused on the analysis of still images (i.e., data structures at a fixed time). They showed that when used on images from computed tomography scans of human proximal tibia with different degree of osteoporosis, the RQA measures related to the complexity and homogeneity of the trabecular structure. Prado et al. [11] adapted these approaches for spatial RQA to study digital mammography high-resolution images, and showed that subtle details could be highlighted, which may elude visual inspections. Riedl et al. [12] proposed to measure similarity between spatially distributed data instances at different time points by means of a mapogram (a special form of a spatiogram), and used the similarity values of the pairwise comparison to construct an RP. This allows to focus on different spatial scales that can be used in a multi-scale analysis of spatio-temporal dynamics. Chen et al. [13] introduced a generalized framework based on complex networks for recurrence analysis of spatial data, able to overcome the limitation from previous approaches, which could only visualize recurrence patterns in the projected reduced-dimension space (i.e., two- or three- dimensions). In this

way, network edges and weights help preserve complex spatial structures and recurrence patterns. The approach proposed in this study also treats each individual point in the structure (or pixel in an image) as a separate dimension, or a separate network node. The advantage of such a graph-based approach is that it is expected to work with spatial structures of arbitrary geometry.

One underlying assumption of the methods listed above seems to be that all the data (multi-variate data or spatial structures) is relevant to recurrence behavior analysis. For instance, recurrence may characterize the entire distributed network of sensors in Nichols et al. [8], and not just a subset of those, and thus all sensors (or, more broadly, data) are used for RP and RQA. However, if only a portion of the spatio-temporal data is carrying recurrence information, it could be more beneficial to first identify the subset of data involving recurrence, and then to apply multi-variate RP and RQA to this subset only to obtain more accurate results. Similar thoughts apply to spatial data, with the identification of the spatial subregion(s) where recurrence is present. In this respect, the method we propose is not an alternative way to perform RP and RQA on spatio-temporal data (although it shares similarities with some of those), but rather an approach to identify spatio-temporal regions of recurrence for a better investigation of it by means of any arbitrary multi-variate RP and RQA technique.

### 3. METHODS

This section is divided in two main parts. The first part focuses on introducing an algorithm for detection of spatio-temporal recurrence. The second part focuses on an approach for generating recurrence plots from multi-variate time series.

### 3.1. Spatio-Temporal Detection of Recurrence

Given a dynamical system with  $n$  state variables, the current mathematical state of the system at a given discrete time  $k$  is obtained by collecting the variables into a state vector  $\mathbf{x}(k)$ . This vector represents a point in a space  $\mathbb{R}^n$ , which is known as the state-space or as the phase-space of the system. The evolution of the system over time traces a path through this space, referred to as the phase-space trajectory of the system. A recurrence in the phase-space can then be defined as a time instant in which the state returns close to a location it has visited before ( $\mathbf{x}(i) \approx \mathbf{x}(j), i \neq j$ ). RPs and RQA provide a way to respectively visualize and quantify recurrent behavior of the phase-space trajectory of a dynamical system [2]. We now assume to be dealing with a complex dynamical system characterized by an arbitrary geometric structure with  $n$  points; at each point we have a uni-variate state variable that varies with time. We do not assume that those points are spatially organized on a regular grid. However, we do assume that the geometric relationships among those points are well-defined (for instance, in terms of proximity: for each point, its neighboring points are specified).

For the purpose of detecting recurring geometric patterns, and given that we have a geometrical structure of  $n$  points, we define the state vector as the  $n$  instantaneous values at those points and we do not use a time-delay embedding. Each point in the geometry is characterized by a signal or a time series, which describes the evolution over time of the state variable associated with that point. An overall trajectory can then be determined for the whole structure, by considering the joint evolution of all states. In this context, recurrence can be defined in terms of spatial patterns that repeat over time. Such patterns may occur in specific regions of the structure, and over limited time intervals. For instance, consider the case of a 2D sinusoidal wave appearing at a specific location in a sequence of random noise images, and over a limited time interval, as depicted in **Figure 2**. The 2D sinusoidal wave was generated from:

$$s(x, y, t) = \sin(2\pi f(x \cos(\theta) + y \sin(\theta)) + \phi(t)), \quad (1)$$

where  $(x, y)$  are the geometric coordinates of a point in the structure,  $f$  is the normalized frequency (equal to 1/12 in this example),  $\theta$  is the angle associated with the orientation of the 2D wave (equal to  $\frac{2\pi}{7}$ ), and  $\phi(t) = \frac{\pi}{9}t$ , for  $t = 0, 1, 2, \dots$ . The questions now become whether in this context it is possible to: (1) detect the presence of this localized recurrence, (2) identify its spatial region of recurrence within the geometric structure, and (3) estimate its time interval. To answer these questions, the following framework for spatio-temporal detection of recurrence is proposed.

#### 3.1.1. Identification of the Most Relevant Points in the Geometric Structure—Spatial Detection of Recurrence

The first step is to identify the most relevant points in the geometric structure associated with a specific recurrent pattern. This is achieved by first generating a matrix  $B = (n \times N)$ , which collects the signals from all points in the structure ( $n$  points and  $N$

samples). Matrix  $B$  is then decomposed by means of PCA, using Singular Value Decomposition (SVD), such that  $B = USV^T$ , with  $U = (n \times n)$  and  $V = (N \times N)$  being orthogonal matrices collecting the left and right singular vectors, respectively, and  $S = (n \times N)$  a rectangular diagonal matrix collecting the singular values of  $B$  on its diagonal. The rationale for using SVD is due to the assumption that spatio-temporal repetitive quasi-periodic patterns are expected to be associated with highly correlated signals at different points of the structure. This provides the ideal setting for PCA to describe this redundancy, which is expected to be picked-up by the first Principal Components (PCs) of  $B$ . At the same time this filters out possible uncorrelated information or noise from other points. Moreover, the output  $V$  of the SVD is independent of any permutation of the rows of  $B$ , making this step of the analysis independent of the specific geometric relationships among the points.

The second step is to identify how many PCs of  $B$  are required to properly determine a recurrent pattern in the structure. The full PC decomposition of  $B$  can be obtained as  $B = AZ$ , where  $Z = \sqrt{N}V^T$  is the matrix collecting the PCs of  $B$  in its rows, and  $A = \frac{1}{\sqrt{N}}US$  is the linear transformation connecting the PCs to the original variables. The most relevant PCs associated with a recurrent pattern are then found by looking at the normalized power spectrum  $P_j(f)$ :

$$P_j(f) = \frac{|\hat{Z}_j(f)|^2}{\max_f |\hat{Z}_j(f)|^2} \quad (2)$$

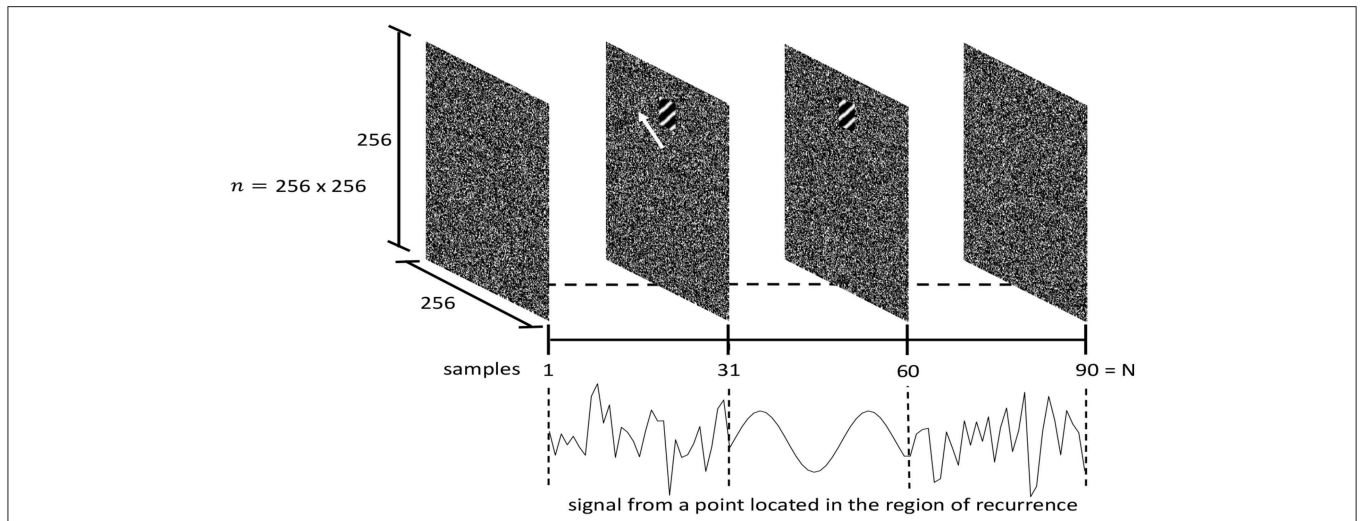
$$\text{where } \hat{Z}_j(f) = \sum_{\ell=0}^{N-1} Z_j(\ell) e^{-\frac{2\pi i \ell f}{N}} \quad (3)$$

of each PC  $Z_j$  (with  $f$  being the frequency index), and by measuring the spectral concentration (SC) around the index  $\tilde{f}_j$  of the dominant frequency peak in  $P_j(f)$  [14]. The spectral concentration is computed as:

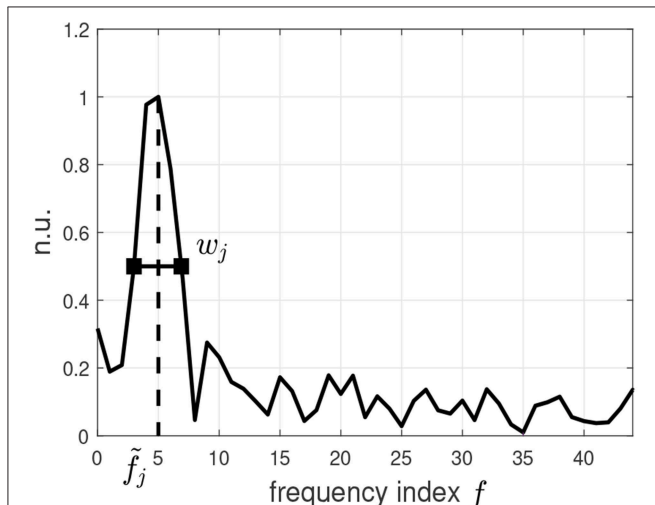
$$SC_j = \frac{\sum_{f=\tilde{f}_j-\frac{w_j}{2}}^{\tilde{f}_j+\frac{w_j}{2}} P_j(f)}{\sum_{f=0}^{N-1} P_j(f)}, \quad (4)$$

where  $w$  is the half height bandwidth of the frequency of the dominant peak at  $\tilde{f}_j$ . The rationale to look at the SC for selecting the most relevant PCs is that recurrence associated with repetitive (quasi-periodic and oscillating) patterns should show clear peaks in the power spectrum of the corresponding PCs. The most relevant PCs are identified as those whose SC is larger than a pre-defined threshold  $\Gamma$  (which is assumed to be dependent on the specific application). **Figure 3** shows the power spectrum of the first PC of the recurrent pattern in **Figure 2**, together with the frequency index  $\tilde{f}_j$  of the dominant peak and its half height bandwidth  $w_j$  for the computation of the SC of component  $Z_j$ .

Once all relevant PCs of a recurrent pattern have been selected, the third step is to identify all points in the original geometric structure associated with those PCs, i.e., the points on which the selected PCs are reflected the most. This is achieved as follows:



**FIGURE 2** | Example of spatio-temporally localized recurrence. A 2D sinusoidal wave of limited time duration appears in a specific region of a random noise image, and propagates in the direction indicated by the white arrow. The sequence consists of  $N = 90$  frames, with the sine wave appearing at frame 31 and lasting for 30 frames until frame 60. The frame size is  $256 \times 256$  points, while the region of recurrence has size  $32 \times 32$ . At the bottom, the signal associated with a point (a pixel) in the region of recurrence is depicted (90 sample long signal), showing the alternation between random noise and the sine wave. The matrix  $B$  corresponding to this case has a size of  $65536 \times 90$ .



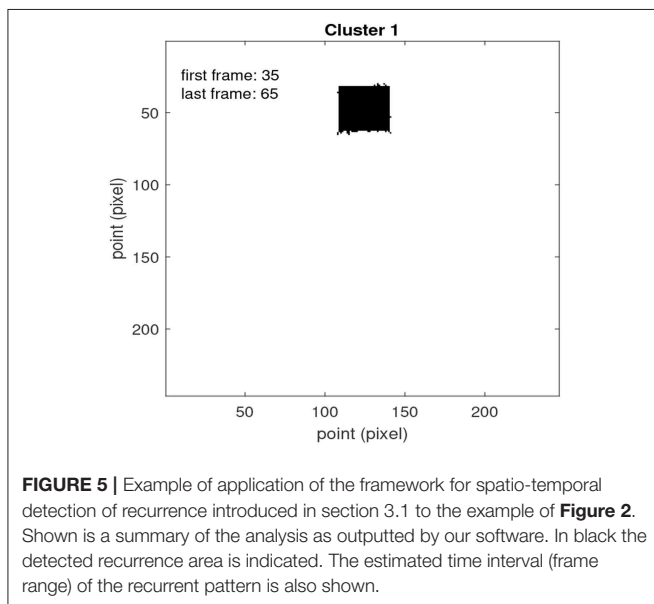
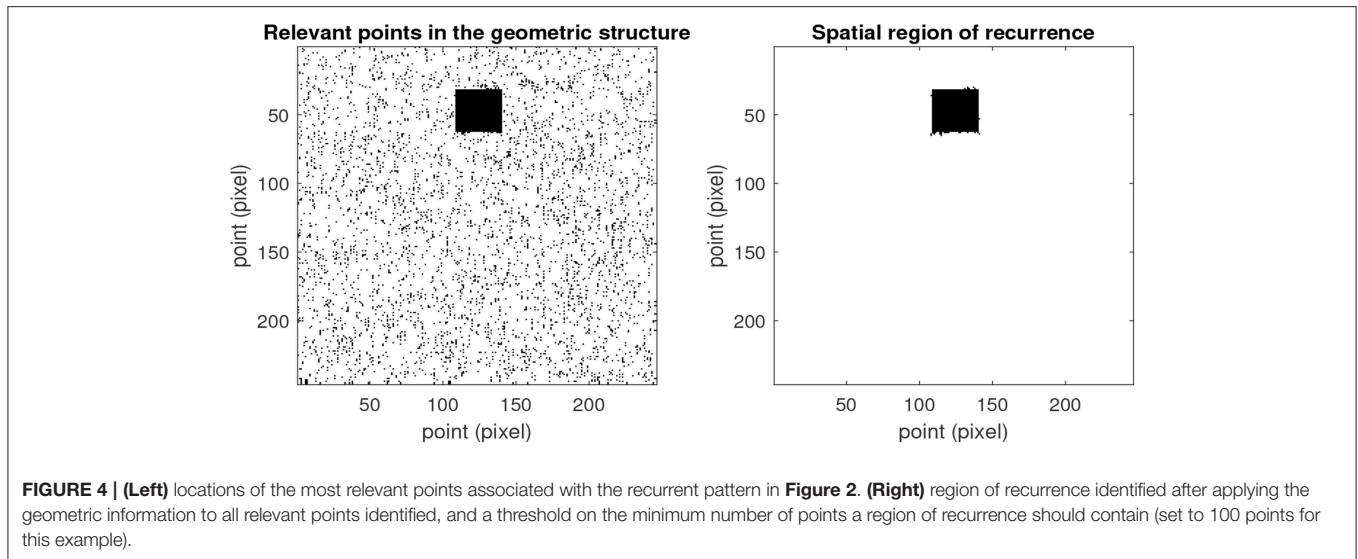
**FIGURE 3** | Normalized power spectrum of the first principal component of the matrix  $B$  from the example of **Figure 2**. The location of the index  $\tilde{f}_j$  of the dominant frequency peak and its half height bandwidth  $w_j$  are also shown. The horizontal axis shows the frequency indices; the vertical axis shows the normalized power spectrum (n.u.: normalized units).

for each selected PC  $Z_j$ , the entries in the  $(n \times 1)$  vector  $\mathbf{a}_j$ , the  $j$ -th column of  $A$ , provide information about the contribution of  $Z_j$  to each point in the original structure. The most relevant points in the geometric structure associated with  $Z_j$  can therefore be defined as those points with the largest contribution from  $Z_j$ . The following criterion is used on  $\mathbf{a}_j$  to select all relevant points associated with a selected  $Z_j$ . Given each entry  $a_j(i)$  of  $\mathbf{a}_j$ , the vector  $\tilde{\mathbf{a}}_j$  is generated by taking the absolute value of each

entry of  $\mathbf{a}_j$ :  $\tilde{a}_j(i) = |a_j(i)|$ , for  $i = 1, \dots, n$ . Then, for each entry  $\tilde{a}_j(i)$  in  $\tilde{\mathbf{a}}_j$ , location  $i$  is selected as relevant if  $\tilde{a}_j(i) > 3\sigma_{\tilde{\mathbf{a}}_j}$ , where  $\sigma_{\tilde{\mathbf{a}}_j}$  denotes the standard deviation of the entries in  $\tilde{\mathbf{a}}_j$ . Assuming that recurrence patterns are only present on limited regions of a structure, and for limited time, most of the points at each time instant are expected to be uncorrelated with those recurrence patterns, and they represent a sort of reference range. The multiplicand 3 is used to identify all points outside of this reference range. **Figure 4-left** shows the locations of the most relevant points associated with the recurrent pattern in **Figure 2**. Observe that the region of recurrence is identified properly, but several spurious points outside of this regions have been selected as well. To accurately identify regions associated with recurrent patterns, and filter out spurious points, the geometric information about proximity between the most relevant points is then taken into account in order to cluster neighboring relevant points together. This can be achieved in a similar way to finding connected nodes in a undirected graph, and any suitable technique for this task can be employed. An (application dependent) threshold can then be applied to define the minimum size (number of points) that a cluster should have to be considered a region of recurrence, and to filter out all small clusters composed by spurious points. **Figure 4-right** shows the result of applying the geometric information to the relevant points in **Figure 4-left**, in order to identify the recurrent regions in a structure.

### 3.1.2. Spatio-Temporal Detection of Recurrence

To be able to estimate the time span of a region of recurrence in a geometric structure, the multi-variate signal can be split up into (overlapping) time windows, and the algorithm for spatial detection of recurrence introduced in the previous section can



be applied to each window individually. All clusters identified in a window need then to be compared with those found in the previous window, to be able to say for each cluster whether it is a new cluster or not, or whether a cluster from the previous window has ceased. Experience shows that the window size  $p$  and the overlap between windows  $q$ , are application dependent, as it is to be expected. **Figure 5** shows the result of applying the proposed approach for spatio-temporal detection of recurrence to the case of **Figure 2**, involving a time limited 2D sinusoidal wave appearing at a specific location in a sequence of random noise images.

For the estimate of the time interval of a region of recurrence, we used the first and last window where the region was detected. The mid points of those windows are used to estimate the start and the end of the time interval of recurrence, respectively. In

the example, the estimated interval (from frame 35 to 65, as displayed in **Figure 5**) is close to the actual time interval of the recurrent pattern (from frame 31 to 60). The result shown in **Figure 5** was obtained with a window size  $p = 30$  frames, and an overlap  $q = 20$ .

### 3.2. Multi-Variate Recurrence Plots

As mentioned before, RPs provide a way to visualize and quantify recurrent behavior of the phase-space trajectory of a dynamical system [2]. According to Takens' theorem the dynamics of a uni-variate process  $x(k)$  can be represented in phase space using an appropriate time-delay embedding, producing the embedded vector:

$$\mathbf{x}(k) = (x(k), x(k + \tau), \dots, x(k + \tau(m - 1)))^T \quad (5)$$

with time-delay  $\tau$  and embedding dimension  $m$ , providing a vector of size  $m \times 1$ . Recurrence  $R_{ij}$  between two points  $\mathbf{x}(i)$  and  $\mathbf{x}(j)$  in the phase-space is measured by computing the distance between those two points. Traditionally, the Euclidean distance is used to compute the proximity of two points in the phase space.

Given a multi-variate process, the uni-variate framework in (5) needs to be extended to handle multi-variate (spatio-temporal) data. This would allow to process the signals from all points of a recurrent region simultaneously, and take into account the contribution of space and time together. A *multi-variate* RP can be generated as follows: the matrix  $X$  of size  $\ell \times M$  is defined, which collects the set  $S$  of points constituting a recurrent region ( $\ell = |S| \leq n$ ), and all samples in the set  $T$  that constitutes the time span of the recurrence in that region ( $M = |T| \leq N$ ). The rows of  $X$  can be viewed as a multi-variate time series  $x_i(k)$ ,  $i = 1, \dots, \ell$  and  $k = 1, \dots, M$ , which denotes the  $i$ -th signal sampled at discrete time  $k$ . The dynamics of a process  $x_i(k)$  can be then reconstructed by considering delayed copies of each of the signals forming the delay vectors:

$$\mathbf{x}(k) = (x_1(k), x_1(k + \tau_1), \dots, x_1(k + (m_1 - 1)\tau_1), \dots, x_\ell(k), x_\ell(k + \tau_\ell), \dots, x_\ell(k + (m_\ell - 1)\tau_\ell))^T.$$

As in the multi-variate case of a dynamical system, the embedding dimension of all  $\ell$  signals can be fixed to  $m_i = 1$ ,  $i = 1, \dots, \ell$ , thus giving the phase space representation  $\mathbf{x}(k) = (x_1(k), x_2(k), \dots, x_\ell(k))$ , as proposed in Nichols et al. [8]. Each column of  $X$  is then assumed to provide an “embedded” vector  $\mathbf{x}(k)$ . This formulation allows to investigate the temporal recurrence over the entire surface covered by a recurrent region. An unthresholded RP can then be generated by measuring the distance between each column  $\mathbf{x}(k)$ , and every other column in  $X$ .

As a distance measure, we propose to use the cosine of the angle between two vectors instead of the Euclidean distance, namely:

$$d(\mathbf{x}(i), \mathbf{x}(j)) = \frac{\mathbf{x}(i)^T \mathbf{x}(j)}{\|\mathbf{x}(i)\|_2 \|\mathbf{x}(j)\|_2} \quad (6)$$

The rationale for this choice is that this distance provides a normalized correlation which is not affected by the magnitude of the vectors (for two signals, that means that the shapes of the signals are compared without being influenced by their respective amplitudes). This approach for generating a multi-variate RP was used in Meste et al. [15] to investigate temporal recurrence of spatial patterns of the electrical activity of the heart, as recorded on the body surface, in patients affected by AF (for which several electrical signals were recorded on the body surface). This helped improving both noninvasive characterization of the progression of the disease and outcome prediction of a specific therapy.

**Figure 6** shows an example of a multi-variate RP for the case presented in **Figure 2**. **Figure 6** top-left shows the multi-variate RP computed on all points and all samples ( $X = B$  of size  $n \times N$ ). It can be noticed how the RP is dominated by the random noise in the system (only the main diagonal stands out, which is related to the autocorrelation at lag zero), while the recurrent patterns associated with the 2D sinusoidal wave is completely concealed by the noise of the system. On the other hand, when a multi-variate RP is generated using only the relevant points in the geometric structure, the recurrent patterns associated with the 2D sinusoidal wave stand above the random noise ( $X = B_{i \in S; 1:N}$  of size  $\ell \times N$ ). This is shown in **Figure 6** top-right, from which the temporal extension of the recurrent pattern can be clearly deduced from the RP (lasting from sample 31 to sample 60). **Figure 6** bottom-left shows the result of generating a multi-variate RP using only the points within the region of recurrence, and the time interval corresponding to the temporal extension of the recurrent pattern ( $X = B_{i \in S; j \in T}$  of size  $\ell \times M$ ; from frame 31 to frame 60). Finally, **Figure 6** bottom-right shows the multi-variate RP computed on the region of interest and time interval reported in **Figure 5**, identified by the spatio-temporal approach proposed in section 3.1.

## 4. SIMULATIONS

Two numerical simulations are presented in this section. The first one shows the ability of the proposed approach to handle multiple recurrent patterns simultaneously occurring in a geometric structure. The second one shows the ability of the proposed approach to detect recurrent patterns from spiraling waves, which may occur in several real world problems, among which cardiac arrhythmia like AF. All analysis and computations were performed in MATLAB (MATLAB and Statistics Toolbox Release 2018a, The MathWorks, Inc., Natick, MA, USA). Code can be requested from the authors.

### 4.1. 2D Sine Waves

The first simulation concerns a sequence of random noise images (each frame of size  $256 \times 256$  points), with two different 2D sinusoidal waves of limited time duration appearing in two different regions of the random images. The sequence is composed of  $N = 150$  frames, with the first sinusoidal wave starting at frame 40 and lasting for 60 frames (region of recurrence of size  $32 \times 32$  points; **Figure 7**-left), and the second sinusoidal wave starting at frame 80 and lasting for 60 frames (region of recurrence of size  $20 \times 20$  points; **Figure 7**-right). The two sinusoidal waves are therefore simultaneously present in twenty frames (**Figure 7**-middle), while having different directions of propagation (indicated by the white arrows in **Figure 7**), different frequencies, and different speeds of propagation (with the smaller wave having a higher speed than the larger wave). The two waves were generated from Equation (1), with the following settings, first sine wave:  $f = 1/12$ ,  $\theta = \frac{2\pi}{7}$ ,  $\phi(t) = \frac{\pi}{9}t$ , for  $t = 0, 1, 2, \dots$ ; second sine wave:  $f = 1/5$ ,  $\theta = \frac{2\pi}{3}$ , and  $\phi(t) = \frac{\pi}{9}t$ , for  $t = 0, 1, 2, \dots$ .

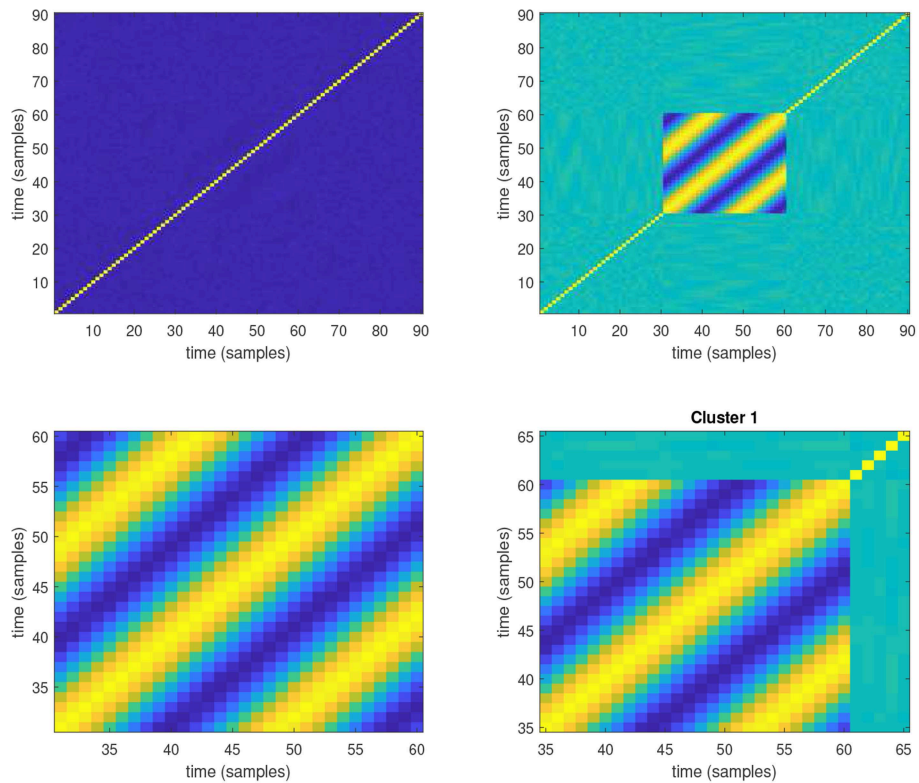
**Figure 8** shows the result of applying the framework proposed in section 3.1 for spatio-temporal detection of recurrence to this example. For this, the following settings were used: a window size  $p = 30$  samples, with overlap  $q = 20$  samples, a threshold  $\Gamma = 0.25$  for the spectral concentration, and a minimum size of 100 points for a cluster to be considered a valid region of recurrence. From **Figure 8**, it can be noticed how the proposed framework accurately detects both the locations of the two regions of recurrence (also avoiding generation of spurious regions), and their corresponding time supports (cluster 1: actual time interval from 40 to 99, estimated from 45 to 105; cluster 2: actual time interval from 80 to 139, estimated from 85 to 135).

**Figure 9** shows the multi-variate RPs of the two recurrent regions depicted in **Figure 8**, computed over the time intervals estimated for the corresponding clusters.

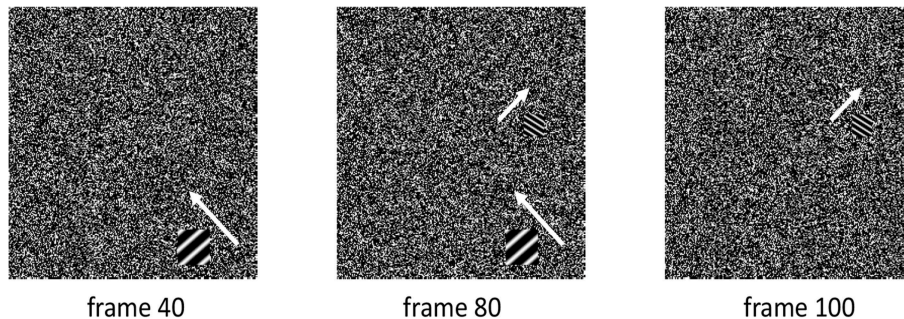
### 4.2. 2D Periodic Spiraling Wave

The second simulation concerns a sequence of random noise images (each frame with a size of  $300 \times 300$  points). The sequence is composed of  $N = 130$  frames, with a 2D periodic spiraling wave appearing at frame 21, and lasting for 80 frames (with a period of approximately 25 frames; the region of recurrence is of size  $128 \times 128$  points; **Figure 10** shows two periods of the spiraling wave). The spiraling pattern was simulated using the





**FIGURE 6 |** Multi-variate RP for the case presented in **Figure 2**. **(Top-left)** The multi-variate RP computed on all points and all samples ( $X = B$  of size  $n \times M$ ). **(Top-right)** Multi-variate RP is generated using only the relevant points in the geometric structure (set  $S$ ). **(Bottom-left)** Multi-variate RP using only the points within the region of recurrence (set  $S$ ), and the time interval corresponding to the temporal extension of the recurrent pattern ( $T = \{31, \dots, 60\}$ ), i.e., frame 31 through 60. **(Bottom-right)** Multi-variate RP computed on the region of interest and time interval (frame 35 through 65) reported in **Figure 5**.

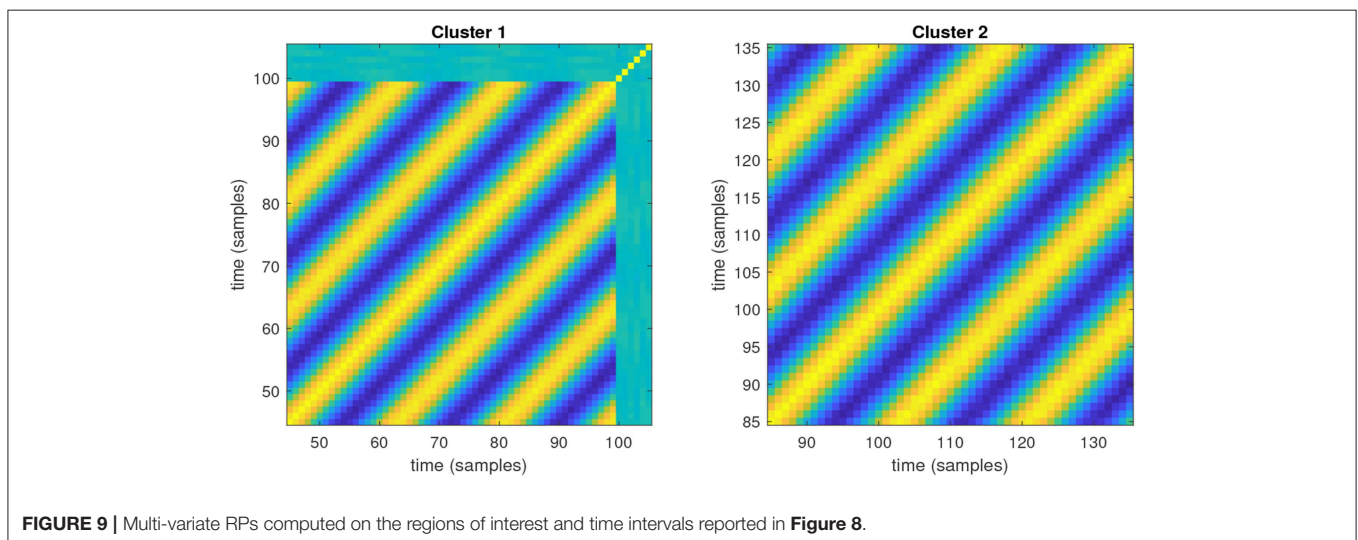
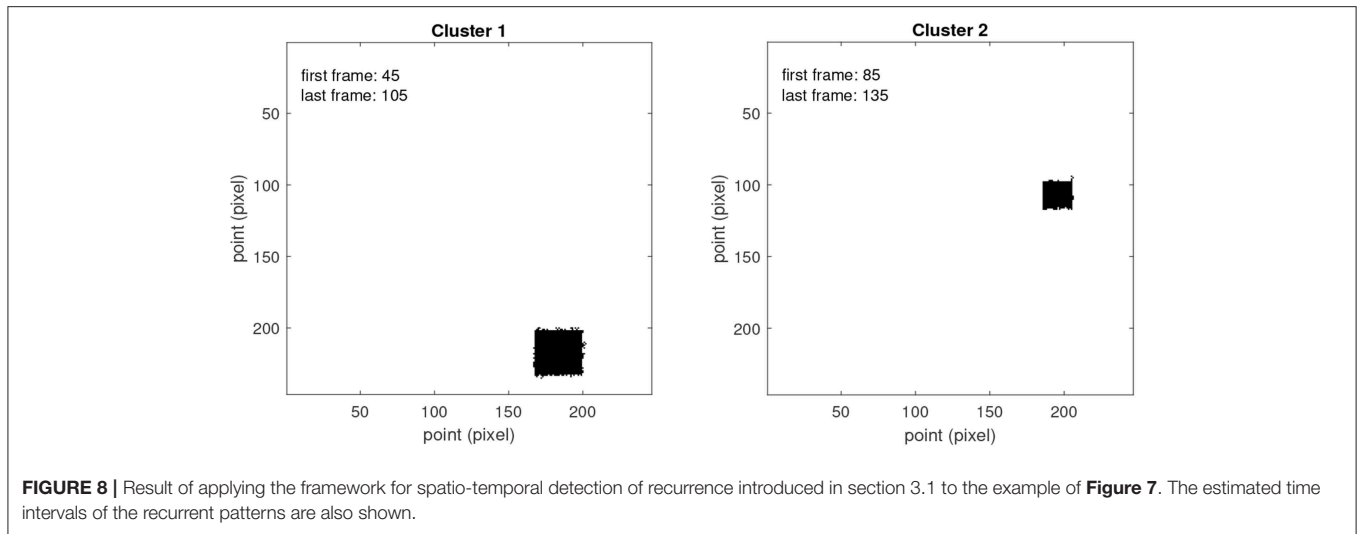


**FIGURE 7 |** Simulation characterized by a sequence of random images with two different 2D sinusoidal waves of limited time duration, appearing in two different regions of the random images. The two sinusoidal waves are simultaneously present over 20 frames, and they have different direction of propagation (indicated by the white arrows), different frequency, and different speed of propagation (with the smaller wave having a higher speed than the larger wave).

complex Ginzburg-Landau equation in 2D (by means of pseudo-spectral code and exponential time differencing, as described in Cox and Matthews [16]). The complex Ginzburg-Landau equation has been used to describe several physical phenomena, among which nonlinear waves, superconductivity, and strings in field theory [17]. The equation is given by:

$$\partial_t A = A + (1 + ib)\Delta A - (1 + ic)|A|^2 A,$$

where  $A$  is a complex function of (scaled) time  $t$  and (two dimensional) space, and the real parameters  $b$  and  $c$  characterize linear and nonlinear dispersion. The simulation in **Figure 10** was generated by setting  $b = 0$  and  $c = 1.2$ . The complex Ginzburg-Landau equation allows to simulate spiral turbulence in two dimensions, which can be regarded as a model of AF. Indeed, cardiac arrhythmia such as AF are characterized by spatially complex dynamics generated as multiple excitation waves that



propagate through the cardiac tissue, merging and breaking up [18]. Unlike the previous simulation, this simulation offers therefore a more realistic example of a spatially complex periodic pattern, and it provides a test bench for the application of the proposed framework for spatio-temporal detection of recurrence to the characterization of atrial activity propagation patterns during AF, which is discussed in section 5.

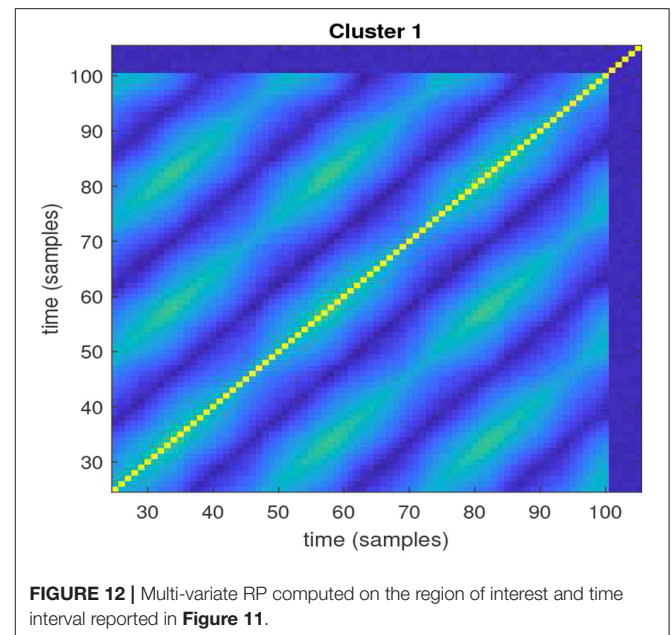
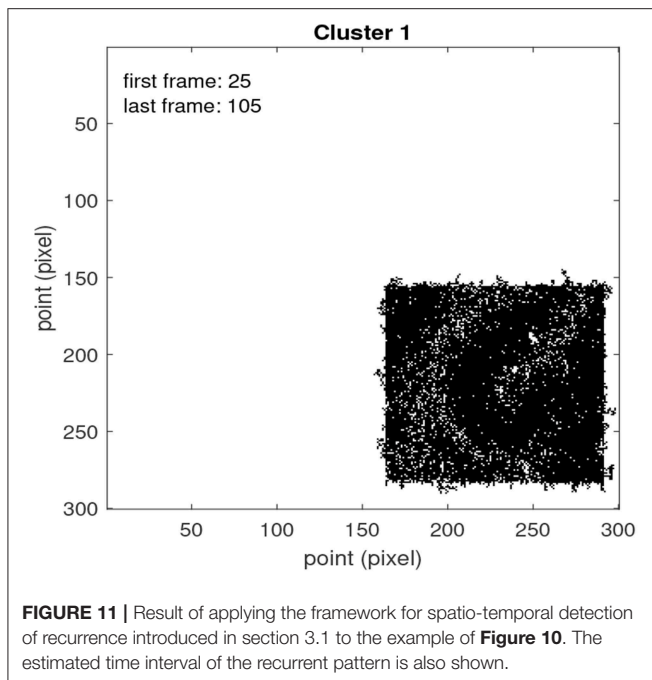
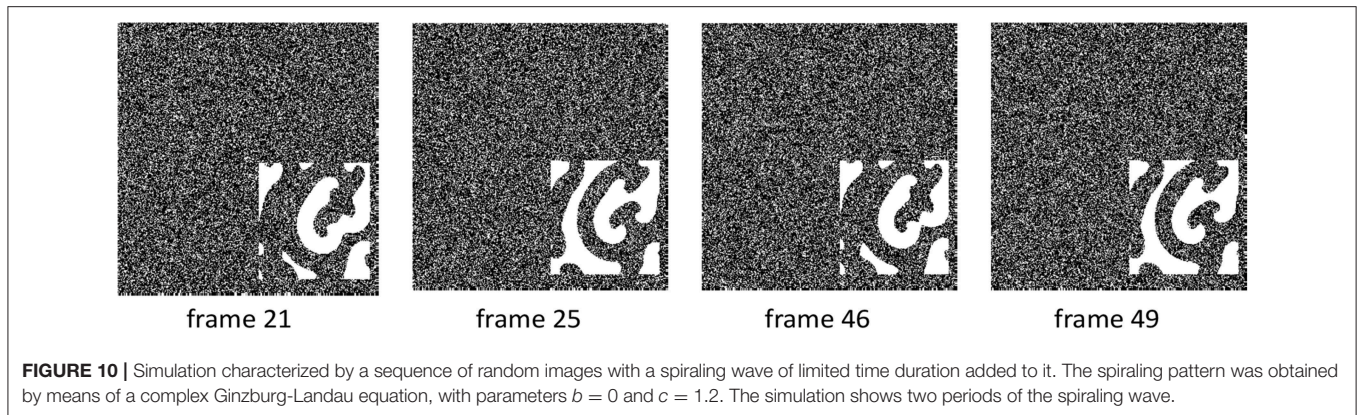
**Figure 11** shows the result of applying the spatio-temporal detection of recurrence to this example. For this, the following settings were used: a window  $p = 40$ , with overlap  $q = 30$ , a threshold  $\Gamma = 0.25$  for the spectral concentration, and a minimum size of 100 points for a cluster to be considered a valid region of recurrence. From **Figure 10**, it can be noticed how the proposed framework admits accurate detection of the location of the region of recurrence, and of its corresponding time interval (actual time interval from 21 to 101, estimated from 25 to 105). A longer window size was required for this simulation to be able to detect recurrence of the spiraling wave. This was likely due to the fact that the spiral wave is sparser both in space and time.

**Figure 12** shows the multi-variate RP of the recurrent region depicted in **Figure 10**, computed over the time interval estimated for the corresponding cluster.

## 5. APPLICATION TO ATRIAL FIBRILLATION

### 5.1. Experimental Setup

The animal study performed to acquire the data used in this study was carried out in accordance with the principles of the Basel Declaration and regulations of European directive 2010/63/EU. The local ethical board for animal experimentation of Maastricht University approved the protocol. Epicardial (outer surface of the heart) high-density direct contact mapping was performed in an ovine model of acute atrial fibrillation (AF). Uni-polar electrograms were measured on the left atrial free wall during an open-thorax procedure with a regular grid of electrodes (16x16 electrodes, 1.5mm inter-electrode distance, 1 KHz sampling frequency, see **Figure 13A**). In a healthy adult sheep, acetylcholine was delivered intracoronary, which



shortened the effective refractory period of the atrial action potential, thereby shortening the AF cycle length and stabilizing AF. Infusion rate was adjusted to reach a sufficiently short AF cycle length at which more complex patterns of AF (i.e., multiple wave fronts per cycle) could be observed.

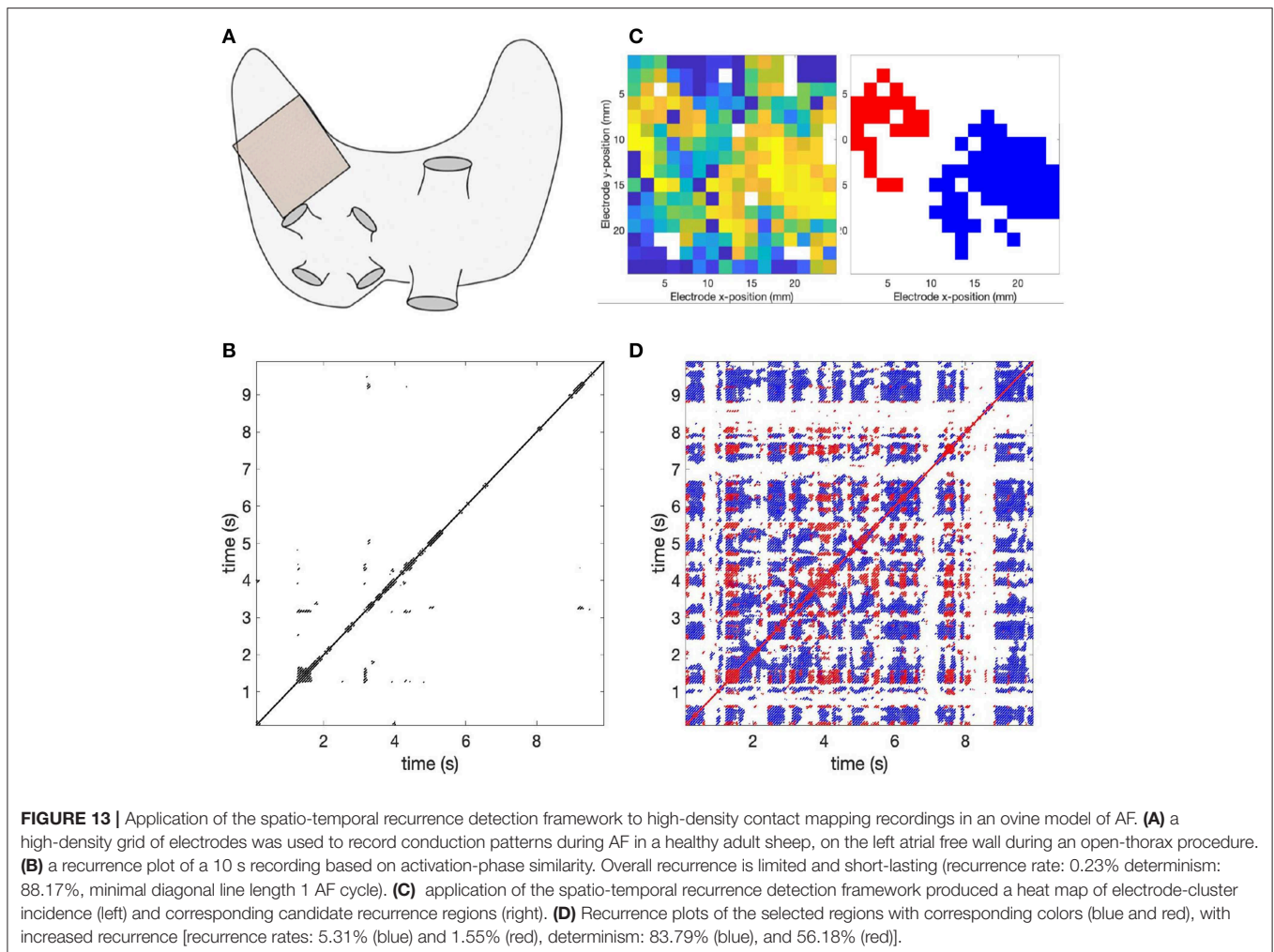
## 5.2. Recurrence Analysis

Recurrence of wave patterns was determined in a selected segment of the mapping, which comprised 10 s of AF, with an average cycle length of 67 ms ( $\sim 15$  Hz). Recurrence analysis was based on automated annotation of local atrial deflections and activation-based phase map similarity as described in previous work [6, 19]. In short, an activation guided phase signal was computed for each signal, setting the moment of phase inversion equal to the local activation time. The linear phase ( $-\pi$  to  $\pi$ ) was interpolated for every interval between activations. Based on these phase signals, phase maps were constructed for all time

steps. The distance between two phase maps was calculated as the average absolute phase difference over all electrodes. This was executed for every possible comparison between time steps within the 10 s recording. Recurrent patterns were defined as phase maps with a distance  $< \frac{\pi}{4}$ , corresponding to  $\frac{1}{8}$  of the AF cycle length.

## 5.3. Application of the Framework for Spatio-Temporal Detection of Recurrence

The proposed framework for spatio-temporal detection of recurrence was applied to the uni-polar electrograms. The frequency content around the fundamental frequency of AF was emphasized by filtering the electrograms with a band-pass filter (40–250 Hz, 3rd order, zero-phase Chebyshev), followed by rectification and a low-pass filter (20 Hz, 3rd order, zero-phase Chebyshev). Window size was set to  $p = 10$  AF cycles ( $\sim 670$  ms) with a 50% overlap ( $q = 5$  AF cycles), a threshold  $\Gamma = 0.25$  for spectral concentration, and a minimum size of 20 electrodes for a cluster. Deviating slightly from the approach



used in the simulations, the identification of regions eligible for recurrence analysis was performed by creating a heat map of the number of times each electrode was selected as part of a cluster in each window. Regions were identified as clusters of electrodes that were selected in at least 75% of the windows. The rationale behind this procedure is that in the context of AF, the interest is in finding regions that harbor both recurrent and frequent patterns that may act as local drivers that maintain AF. This procedure also accounts for potential minor drifting of the dominant recurring patterns.

**Figure 13** shows the results of the case study in the ovine model of AF. The RP for the whole mapping area (**Figure 13B**) shows that overall recurrence rate is very limited, which indicates that there are almost no wave front patterns that re-occur. Close to the diagonal there are a few, short-lived recurrences that however do not reappear later on. Applying spatio-temporal recurrence detection, a heat map of electrode-cluster incidence was determined that shows two distinct regions of frequently selected electrodes (**Figure 13C**). RPs for these two regions are shown in **Figure 13D**, in blue and red. Clearly, these two regions - most notably the larger region in blue - have an increased recurrence rate compared to the RP of the full mapping

area. This shows the benefit of using the suggested framework to unveil regions of recurrence in spatio-temporal data from a complex dynamical system, which would be otherwise concealed by using all the spatio-temporal information available.

## 6. DISCUSSION

This study proposed a novel framework for spatio-temporal detection of recurrence in complex dynamical systems characterized by repetitive (quasi-periodic) spatio-temporal patterns. This framework allows to address the following questions: whether a recurrent pattern is present in the geometric structure, where it is located (in which region of the geometric structure), and when it occurs (at what time instants it appears and then disappears). This is relevant since several dynamical systems are characterized by a well defined spatial organization, and accurate localization of recurrence both in space and time becomes important to be able to properly describe the recurrent behavior of such systems, and filter out any noise or unwanted information. This can be seen in **Figure 6**, which displays the multi-variate RP of a simple example, a 2D sinusoidal wave

traveling in a limited region of a noisy image. When all spatial and temporal information is considered, the dynamic behavior associated with the sinusoidal wave is concealed by the noise, and the typical RP of white noise is obtained. On the other hand, the typical RP of a sinusoidal wave is properly retrieved when only the spatio-temporal information associated with the region of recurrence is used.

The two numerical simulations presented in section 4 suggest that the proposed framework is able to achieve a detailed identification of the spatial and temporal locations of different types of spatio-temporal repetitive patterns in a dynamical system. The first simulation shows that an accurate identification in both space and time is possible even when several recurrent patterns are simultaneously present in the geometric structure of a dynamical system. The second simulation shows that accuracy is also maintained with more complicated types of recurrent patterns like spiral waves from reaction diffusion models, simulated by means of the complex Ginzburg-Landau equation, whose recurrent patterns become sparser both in space and time, and thus more difficult to be detected. This scenario is also encountered in cardiac arrhythmia like AF, in which abnormal electrical activity may generate and propagate in specific regions of the atrial tissue, which may also offer the physiological conditions for this activity to self-perpetuate over a certain time span. When applied to actual invasive recordings of atrial activity during AF in an animal model, the proposed framework was able to unveil regions on the atrial walls characterized by recurrent behaviors, which were not visible from the RP generated from the full available spatio-temporal data. This is relevant, as an accurate spatial and temporal identification of those regions may help characterize the progression of the disease, the level of impairment of the cardiac tissue, and improve patients stratification and personalize therapy [20].

The proposed framework was also tested on simulations similar to those of **Figures 2, 7**, but with the background noise replaced by a 2D sinusoidal wave covering all the geometric structure and lasting for the entire duration of the simulation (results not presented in this study). This was done in order to test the ability of the framework to detect regions of spatio-temporal repetitive patterns in presence of a background global repetitive pattern. The preliminary results of this analysis showed that the framework could correctly detect the regions of recurrence and separate those from the background activity. In turn, this suggests that the method should be able to handle the contemporary presence of different temporal structures in different areas and at different time/spatial scales, and to identify meaningful temporal structures with low percentage of variance explained. However, this should be thoroughly addressed in a future study. In this respect, Giuliani et al. [21] showed that addition of artificial noise to a multi-variate dataset before PCA improved the discrimination between weak periodic signals and noise inherent in the data. In a similar way, Poon and Barahona [22] proposed the controlled addition of white or colored noise to short and noisy time series data to track the onset of deterministic chaos and to give a relative measure of chaos intensity. The framework introduced in this study may benefit from such a controlled

addition of noise to the spatio-temporal data to improve discrimination of different temporal structures simultaneously present in different areas and at different time/spatial scales. Similarly, Zbilut et al. [23] used cross-recurrence to extract periodic signals up to very low signal-to-noise ratio. It would be worthwhile to investigate whether replacing matrix  $B$  in the current framework with the covariance matrix of the multi-variate time series data may improve identification of the significant points in the geometric structure, and reduce spurious points due to noise.

Several extensions of RP techniques for spatially distributed data have been introduced. In this respect, Riedl et al. [12] proposed multi-scale recurrence analysis of spatio-temporal data as a way to take spatial patterns of different scales and with different rhythms into account. They showed that this approach is able to both separate mixed regular patterns of specific scales and rhythms and also to reveal large-scale rhythms beyond the dominant small-scale dynamics in spatial distributed systems. The framework proposed in this study could be integrated with this and other multi-variate RP approaches, in order to improve multi-variate RQA of spatio-temporal data.

The task of detecting the start and end points of a recurrent pattern may appear very similar to the one of change point detection (CPD) in time series data [24]. CPD is about identifying the time point(s) in a time series such that observations follow a certain statistical distribution up to that point and a different distribution after that point [25]. In this respect, Hu et al. [26] recently proposed the use of RPs to improve CPD in multi-variate time series data. However, the sudden appearance of a spatio-temporal repetitive pattern in a multi-variate time series represents a very specific type of change, which may not be reflected in a statistical difference in the distributions of the observations before and after the change. In a future study, it may be worthwhile to investigate whether an RP-based CPD approach could be used as an alternative to the sliding window approach suggested in this study, in order to improve the accuracy in the estimation of the time interval of a recurrent pattern, after the most significant points in the geometric structure have been identified.

In this study, we did not analyze the influence of the noise level on the accuracy in the detection of spatio-temporal recurrence, which should be addressed by a future study. One limitation of the proposed framework is that it only considers information about proximity when clustering neighboring points to build a region of recurrence. Additional information could be taken into account, such as distances between the points, which may become relevant when clustering points in arbitrary irregular geometric structures.

## 7. CONCLUSION

In this study, we presented a novel framework for spatio-temporal detection of recurrence in complex dynamical systems characterized by a well defined spatial structure. This framework

focuses on spatio-temporally localized repetitive patterns and is able to retrieve the correct recurrence plots associated with known traveling waves in a geometric structure, by focusing on the spatial regions and time intervals involved by a recurrence behavior, and leaving out all unwanted information. This framework may be integrated with state of the art methods for multi-scale and multi-variate recurrence plots, to help improve recurrence quantification analysis of spatio-temporal data.

## DATA AVAILABILITY

The datasets generated for this study are available on request to the corresponding author.

## REFERENCES

- Marwan N, Kurths J, Saparin P. Generalised recurrence plot analysis for spatial data. *Phys Lett A*. (2007) **360**:545–51. doi: 10.1016/j.physleta.2006.08.058
- Eckmann JP, Oliffson Kamphorst S, Ruelle D. Recurrence plots of dynamical systems. *Europhys Lett*. (1987) **4**:973–77.
- Sipers A, Borm P, Peeters R. On the unique reconstruction of a signal from its unthresholded recurrence plot. *Phys Lett A*. (2011) **375**:2309–21. doi: 10.1016/j.physleta.2011.04.040
- Sipers A, Borm P, Peeters R. Robust reconstruction of a signal from its unthresholded recurrence plot subject to disturbances. *Phys Lett A*. (2017) **381**:604–15. doi: 10.1016/j.physleta.2016.12.028
- Zbilut JP, Webber CL. Embeddings and delays as derived from quantification of recurrence plots. *Phys Lett A*. (1992) **171**:199–203.
- Van Hunnik A, Zeemering S, Podziemski P, Simons J, Gatta G, Hannink L, et al. Stationary atrial fibrillation properties in the goat do not entail stable or recurrent conduction patterns. *Front Physiol*. (2018) **9**:947. doi: 10.3389/fphys.2018.00947
- Romano MC, Thiel M, Kurths J, von Bloh W. Multivariate recurrence plots. *Phys Lett A*. (2004) **330**:214–23. doi: 10.1016/j.physleta.2004.07.066
- Nichols JM, Trickley ST, Seaver M. Damage detection using multivariate recurrence quantification analysis. *Mech Syst Signal Process*. (2006) **20**:421–37. doi: 10.1016/j.ymssp.2004.08.007
- Vasconcelos D, Lopes SR, Viana RL, Kurths J. Spatial recurrence plots. *Phys Rev E*. (2006) **73**:056207. doi: 10.1103/PhysRevE.73.056207
- Marwan N, Romano MC, Thiel M, Kurths J. Recurrence plots for the analysis of complex systems. *Phys Rep*. (2007) **438**:237–329. doi: 10.1016/j.physrep.2006.11.001
- Prado TL, Galuzio PP, Lopes SR, Viana RL. Spatial recurrence analysis: a sensitive and fast detection tool in digital mammography. *Chaos*. (2014) **24**:013106. doi: 10.1063/1.4861895
- Riedl M, Marwan N, Kurths J. Multiscale recurrence analysis of spatio-temporal data. *Chaos*. (2015) **25**:123111. doi: 10.1063/1.4937164
- Chen CB, Yang H, Kumara S. Recurrence network modeling and analysis of spatial data. *Chaos*. (2018) **28**:085714. doi: 10.1063/1.5024917
- Castells F, Rieta JJ, Millet J, Zarzoso V. Spatiotemporal blind source separation approach to atrial activity estimation in atrial tachyarrhythmias. *IEEE Trans Biomed Eng*. (2005) **52**:258–67. doi: 10.1109/TBME.2004.840473
- Meste O, Zeemering S, Karel J, Lankveld T, Schotten U, Crijns H, et al. Noninvasive recurrence quantification analysis predicts atrial fibrillation recurrence in persistent patients undergoing electrical cardioversion. *Proc Comput Cardiol*. (2016) **43**:677–80. doi: 10.22489/CinC.2016.199-342
- Cox SM, Matthews PC. Exponential time differencing for stiff systems. *J Comput Phys*. (2002) **176**:430–55. doi: 10.1006/jcph.2002.6995
- Aranson IS, Kramer L. The world of the complex Ginzburg-Landau equation. *Rev Modern Phys*. (2002) **74**:99–143. doi: 10.1103/RevModPhys.74.99
- Byrne G, Marcotte CD, Grigoriev RO. Exact coherent structures and chaotic dynamics in a model of cardiac tissue. *Chaos*. (2015) **25**:033108. doi: 10.1063/1.4915143
- Zeemering S, Bonizzi P, Maesen B, Peeters R, Schotten U. Recurrence quantification analysis applied to spatiotemporal pattern analysis in high-density mapping of human atrial fibrillation. In: *2015 37th Annual International Conference of the IEEE Engineering in Medicine and Biology Society (EMBC) (Milan)*. (2015). p. 7704–7. doi: 10.1109/EMBC.2015.7320177
- Zeemering S, Lankveld TAR, Bonizzi P, Limantoro I, Bekkers SCAM, Crijns HJGM, et al. The electrocardiogram as a predictor of successful pharmacological cardioversion and progression of atrial fibrillation. *EP Eur*. (2017) **20**:e96–104. doi: 10.1093/europace/eux234
- Giuliani A, Colosimo A, Benigni R, Zbilut JP. On the constructive role of noise in spatial systems. *Phys Lett A*. (1998) **247**:47–52.
- Poon CS, Barahona M. Titration of chaos with added noise. *Proc Natl Acad Sci USA*. (2001) **98**:7107–12. doi: 10.1073/pnas.131173198
- Zbilut JP, Giuliani A, Webber CL. Detecting deterministic signals in exceptionally noisy environments using cross-recurrence quantification. *Phys Lett A*. (1998) **246**:122–8.
- Page ES. On problems in which a change in a parameter occurs at an unknown point. *Biometrika*. (1957) **44**:248–52.
- Maboudou-Tchao EM, Hawkins DM. Detection of multiple change-points in multivariate data. *J Appl Stat*. (2013) **40**:1979–95. doi: 10.1080/02664763.2013.800471
- Hu M, Zhou S, Wei J, Deng Y, Qu W. Change-point detection in multivariate time-series data by recurrence plot. *WSEAS Transact Comput*. (2014) **13**:592–9.

**Conflict of Interest Statement:** The authors declare that the research was conducted in the absence of any commercial or financial relationships that could be construed as a potential conflict of interest.

Copyright © 2019 Bonizzi, Peeters, Zeemering, van Hunnik, Meste and Karel. This is an open-access article distributed under the terms of the Creative Commons Attribution License (CC BY). The use, distribution or reproduction in other forums is permitted, provided the original author(s) and the copyright owner(s) are credited and that the original publication in this journal is cited, in accordance with accepted academic practice. No use, distribution or reproduction is permitted which does not comply with these terms.