



# Usage of street-level imagery for city-wide graffiti mapping

Eric K. Tokuda, Claudio Silva, Roberto M Cesar-Jr

## ► To cite this version:

Eric K. Tokuda, Claudio Silva, Roberto M Cesar-Jr. Usage of street-level imagery for city-wide graffiti mapping. LatinX in AI Research at ICML 2019, Jun 2019, Long Beach CA, United States. hal-02243790

**HAL Id: hal-02243790**

**<https://hal.science/hal-02243790>**

Submitted on 1 Aug 2019

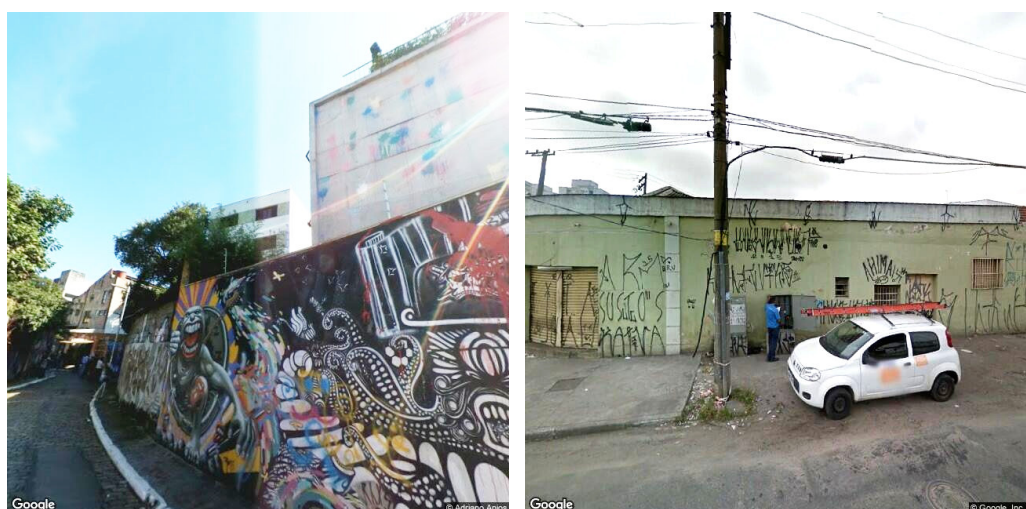
**HAL** is a multi-disciplinary open access archive for the deposit and dissemination of scientific research documents, whether they are published or not. The documents may come from teaching and research institutions in France or abroad, or from public or private research centers.

L'archive ouverte pluridisciplinaire **HAL**, est destinée au dépôt et à la diffusion de documents scientifiques de niveau recherche, publiés ou non, émanant des établissements d'enseignement et de recherche français ou étrangers, des laboratoires publics ou privés.



## PROBLEM

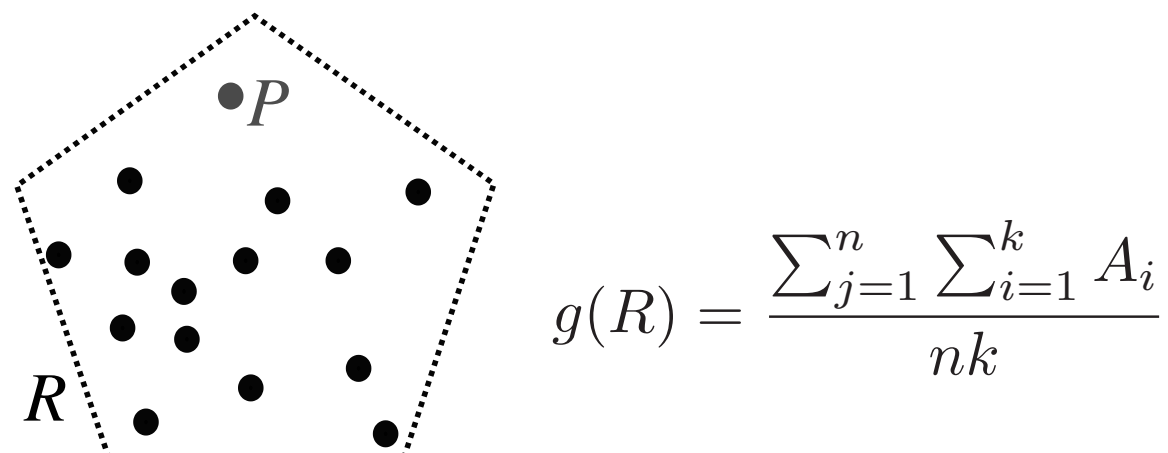
- Graffiti commonly found in large urban centers
- It can be categorized into artistic drawings and tagging, as seen in the picture below. We are interested in the latter. Images obtained from [1].



- Such acts are seen as crimes and are combated by public authorities
- In 2017, the city hall of São Paulo, Brazil, enacted a law [2] that establishes high fees and combat to acts of graffiti against public heritage.
- The European Union maintain programs to understand and combat such acts [3].
- Identifying where the concentration of graffiti in the city are would be of great utility because it would allow auditing saturated regions (Broken Windows theory)
- There is currently no automatic way of obtaining a tagging map of the city

## METHOD

- Use of street-level imagery
- Sampling the region of interest
- Identification of the region affected by graffiti on each image
- We use an aggregation metric by region

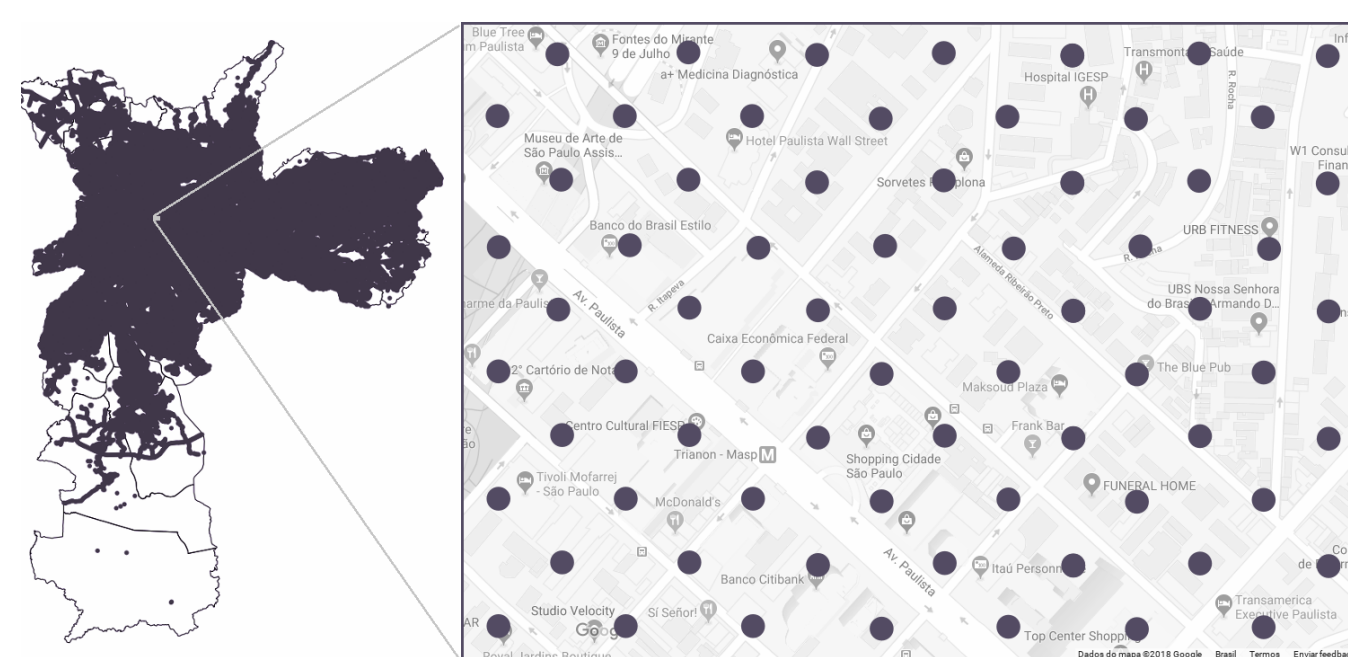


$$g(R) = \frac{\sum_{j=1}^n \sum_{i=1}^k A_i}{nk}$$

- We define the graffiti level  $g$  of a region  $R$  as the average of the graffiti levels of each sampled point. The graffiti level of each point is computed as the average affected area in each picture.

## EXPERIMENTS

- Images from [1]
- We manually annotated 632 images and trained a method of segmentation of graffiti [4]
- Regularly-spaced grid over São Paulo



Evaluation of the trained model over a sample. Images from [1].

## CONTRIBUTIONS

We propose a method to automatically compute the graffiti map of a city using computer vision over public images. We systematically collect data, train a segmentation algorithm and evaluate using the obtained dataset. We perform a case study in São Paulo, Brazil, and compare to socio-economical indicators.

## ACKNOWLEDGEMENTS

We acknowledge the support from FAPESP grants #14/24918-0, #15/22308-2, CNPq, CAPES and NAP eScience - PRP - USP.

## REFERENCES

- [1] Google, "Google Maps," <https://www.google.com/maps>, 2005, [Last accessed April-2018].
- [2] Folha de São Paulo, "Dória sanciona lei anti-pichação e veta até grafite não autorizado," <https://www1.folha.uol.com.br/cotidiano/2017/02/1860352-doria-sanciona-lei-anti-pichacao-e-veta-ate-grafite-nao-autorizado.shtml>, 2017, [Last accessed April-2018].
- [3] S. GmbH, "GRAFFOLUTION Awareness and Prevention Solutions against Graffiti Vandalism in Public Areas and Transport - Final report summary," 2016.
- [4] K. He, G. Gkioxari, P. Dollár, and R. Girshick, "Mask r-cnn," in *Computer Vision (ICCV), 2017 IEEE International Conference on*. IEEE, 2017, pp. 2980–2988.

- We applied the previous equation to compute the graffiti level in each neighbourhood of the city

