



HAL
open science

Properties of the molecular gas in the fast outflow in the Seyfert galaxy IC 5063

Tom Oosterloo, J. Raymond Oonk, Raffaella Morganti, Françoise Combes, Kalliopi Dasyra, Philippe Salomé, Nektarios Vlahakis, Clive Tadhunter

► To cite this version:

Tom Oosterloo, J. Raymond Oonk, Raffaella Morganti, Françoise Combes, Kalliopi Dasyra, et al.. Properties of the molecular gas in the fast outflow in the Seyfert galaxy IC 5063. *Astronomy and Astrophysics - A&A*, 2017, 608, pp.A38. 10.1051/0004-6361/201731781 . hal-02235757

HAL Id: hal-02235757

<https://hal.science/hal-02235757>

Submitted on 21 Jan 2023

HAL is a multi-disciplinary open access archive for the deposit and dissemination of scientific research documents, whether they are published or not. The documents may come from teaching and research institutions in France or abroad, or from public or private research centers.

L'archive ouverte pluridisciplinaire **HAL**, est destinée au dépôt et à la diffusion de documents scientifiques de niveau recherche, publiés ou non, émanant des établissements d'enseignement et de recherche français ou étrangers, des laboratoires publics ou privés.

Properties of the molecular gas in the fast outflow in the Seyfert galaxy IC 5063

Tom Oosterloo^{1,2}, J. B. Raymond Oonk^{1,3}, Raffaella Morganti^{1,2}, Françoise Combes^{4,5}, Kalliopi Dasyra^{6,7}, Philippe Salomé⁴, Nektarios Vlahakis⁶, and Clive Tadhunter⁸

¹ ASTRON, The Netherlands Institute for Radio Astronomy, Postbus 2, 7990 AA Dwingeloo, The Netherlands
e-mail: oosterloo@astron.nl

² Kapteyn Astronomical Institute, University of Groningen, Postbus 800, 9700 AV Groningen, The Netherlands

³ Leiden Observatory, Leiden University, Postbus 9513, 2300 RA Leiden, The Netherlands

⁴ LERMA, Observatoire de Paris, CNRS, UPMC, PSL Univ., Sorbonne Univ., 75014 Paris, France

⁵ Collège de France, 11 place Marcelin Berthelot, 75005 Paris, France

⁶ Department of Astrophysics, Astronomy & Mechanics, Faculty of Physics, National and Kapodistrian University of Athens, 15784 Panepistimiopolis Zografou, Greece

⁷ National Observatory of Athens, Institute for Astronomy, Astrophysics, Space Applications and Remote Sensing, Penteli, 15236 Athens, Greece

⁸ Department of Physics and Astronomy, University of Sheffield, Hounsfield Road, Sheffield S3 7RH, UK

Received 16 August 2017 / Accepted 3 October 2017

ABSTRACT

We present a detailed study of the properties of the molecular gas in the fast outflow driven by the active galactic nucleus (AGN) in the nearby radio-loud Seyfert galaxy IC 5063. By using ALMA observations of a number of tracers of the molecular gas ($^{12}\text{CO}(1-0)$, $^{12}\text{CO}(2-1)$, $^{12}\text{CO}(3-2)$, $^{13}\text{CO}(2-1)$ and $\text{HCO}^+(4-3)$), we map the differences in excitation, density and temperature of the gas as function of position and kinematics. The results show that in the immediate vicinity of the radio jet, a fast outflow, with velocities up to 800 km s^{-1} , is occurring of which the gas has high excitation with excitation temperatures in the range 30–55 K, demonstrating the direct impact of the jet on the ISM. The relative brightness of the ^{12}CO lines, as well as that of $^{13}\text{CO}(2-1)$ vs. $^{12}\text{CO}(2-1)$, show that the outflow is optically thin. We estimate the mass of the molecular outflow to be at least $1.2 \times 10^6 M_{\odot}$ and likely to be a factor between two and three larger than this value. This is similar to that of the outflow of atomic gas, but much larger than that of the ionised outflow, showing that the outflow in IC 5063 is dominated by cold gas. The total mass outflow rate we estimated to be $\sim 12 M_{\odot} \text{ yr}^{-1}$. The mass of the outflow is much smaller than the total gas mass of the ISM of IC 5063. Therefore, although the influence of the AGN and its radio jet is very significant in the inner regions of IC 5063, globally speaking the impact will be very modest. We used RADEX non-LTE modelling to explore the physical conditions of the molecular gas in the outflow. Models with the outflowing gas being quite clumpy give the most consistent results and our preferred solutions have kinetic temperatures in the range 20–100 K and densities between 10^3 and 10^6 cm^{-3} . The resulting pressures are 10^6 – $10^{7.5} \text{ K cm}^{-3}$, about two orders of magnitude higher than in the outer quiescent disk. The highest densities and temperatures are found in the regions with the fastest outflow. The results strongly suggest that the outflow in IC 5063 is driven by the radio plasma jet expanding into a clumpy gaseous medium and creating a cocoon of (shocked) gas which is pushed away from the jet axis resulting in a lateral outflow, very similar to what is predicted by numerical simulations.

Key words. galaxies: active – galaxies: individual: IC 5063 – ISM: jets and outflows – radio lines: galaxies

1. Introduction

The study of fast, galactic scale gas outflows (with velocities exceeding 1000 km s^{-1} in some cases) driven by active galactic nuclei (AGN) has become very relevant for understanding the role of AGN in galaxy evolution because of the large amounts of energy such outflows can dump into the interstellar medium (ISM) of the host galaxy or in the gaseous medium surrounding it, thereby affecting the progress of star formation and of the growth of the central super-massive black hole. Interestingly, such studies have brought a number of surprises about the physical properties of the gas impacted by the AGN. One of the unexpected results of recent work has been the finding that these fast AGN-driven outflows contain a large, in terms of mass often dominant, component of cold (atomic and molecular) gas (see Fiore et al. 2017, for a recent compilation). The presence of large

amounts of cold gas in fast outflows is interesting for at least two reasons: the origin – how can cold gas survive, or form, in fast outflows – and whether fast outflows not only quench star formation, but, instead, also can, under certain circumstances, induce star formation (e.g. Silk 2013; Maiolino et al. 2017).

Despite the relevance of fast outflows, detailed studies of cold, fast outflows are still limited to a few objects, and, given the diversity of the characteristics of these objects, our understanding of the typical physical conditions of the cold gas is limited. Improving our knowledge of the properties of cold gas in such harsh environments is key for developing physical models for the outflows and what drives them, as well as for assessing the overall impact of the AGN, and the outflows it drives, on galaxy evolution.

The limited number of objects where molecular outflows not only have been detected, but in addition also have their

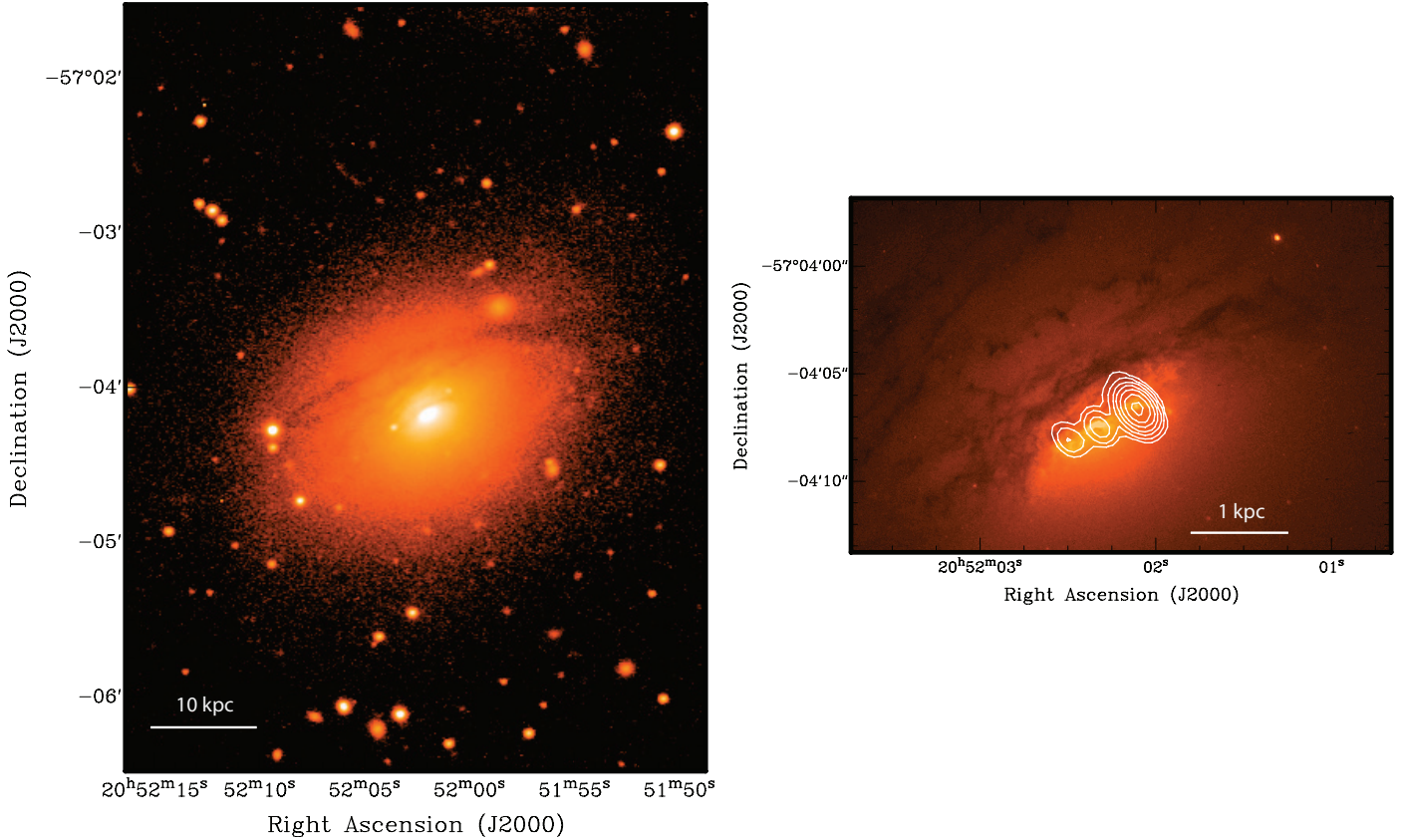


Fig. 1. *Left:* optical image of IC 5063. This image is taken, using EFOSC on the ESO 3.6-m telescope, through a narrow-band filter centred on 5100 Å, and shows the large-scale dust lanes and the overall structure of the galaxy (Tsvetanov et al. 1997). *Right:* HST image of IC 5063 of the central regions of IC 5063, taken from the public HST archive. This image is a single 500 s exposure obtained with WFPC2 through the F606W filter, and it shows the structure of the inner dust lanes in the central region. Overplotted are the contours of the 8 GHz continuum emission of the central kpc-sized radio source showing the central core and the eastern and western radio lobes (data from Morganti et al. 1998). Contour levels are 2, 4, 8, 16, 32, 64, and 128 mJy beam⁻¹.

physical properties investigated using multiple line transitions, show large differences in physical conditions between the quiescent, non-affected gas and the outflowing gas, underlining the impact of the driving mechanism (e.g. NGC 1068, Viti et al. 2014; García-Burillo et al. 2014; Mrk 231, Aalto et al. 2012; Cicone et al. 2012; Feruglio et al. 2015; NGC 1266, Alatalo et al. 2011; 4C12.50, Dasyra et al. 2014 and NGC 1433, Combes et al. 2013). The results indicate that the outflowing molecular gas is clumpy and has much higher temperatures and densities than the molecular gas in the normal ISM. The picture that emerges is that the gas is compressed and fragmented by the mechanism that drives the outflow.

One limiting factor is that not many objects are known for which one can do a detailed, spatially well resolved analysis of the properties and kinematics of the outflow. One of the few objects for which this is possible is the nearby Seyfert galaxy IC 5063. This was the first object where a fast AGN-driven outflow of atomic hydrogen was discovered (Morganti et al. 1998). IC 5063 is an early-type galaxy ($z = 0.01134$ ¹) with a number of prominent dust lanes (see Fig. 1). The galaxy is gas rich, having a large-scale, regularly rotating gas disk containing $4.2 \times 10^9 M_{\odot}$ of atomic hydrogen (Morganti et al. 1998), and at least $10^9 M_{\odot}$ of molecular hydrogen (Morganti et al. 2015).

¹ Assuming a Hubble constant $H_0 = 70 \text{ km s}^{-1} \text{ Mpc}^{-1}$, $\Omega_{\Lambda} = 0.7$ and $\Omega_M = 0.3$, the redshift of IC 5063 ($V_{\text{hel}} = 3400 \text{ km s}^{-1}$) implies an angular size distance of 47.9 Mpc and a scale of 1 arcsec = 232 pc.

IC 5063 is one of the most radio-loud Seyfert galaxies known (albeit, in a general sense, it is still a relatively weak radio AGN, with power $P_{1.4 \text{ GHz}} = 3 \times 10^{23} \text{ W Hz}^{-1}$). The radio continuum emission comes from a linear triple structure, aligned with the inner dust lane, consisting of a central core and two lobes (Morganti et al. 1998), of about 4 arcseconds in size (corresponding to $\sim 1 \text{ kpc}$; see Fig. 1). Observations of the atomic hydrogen in IC 5063 quite unexpectedly revealed the presence of a fast outflow, with outflow velocities up to 700 km s^{-1} (Morganti et al. 1998). Subsequent VLBI observations of the HI in IC 5063 (Oosterloo et al. 2000), as well as observations of the ionised gas (Morganti et al. 2007; Dasyra et al. 2015), suggested the likely dominant role of the radio jet, and the over-pressured cocoon surrounding it, in driving the outflow. The presence of molecular gas associated with this outflow was first found from APEX CO(2–1) observations (Morganti et al. 2013) and by the detection of warm molecular gas (H_2 detected at $2.2 \mu\text{m}$) using ISAAC on the VLT (Tadhunter et al. 2014). The latter study also showed that the warm H_2 gas with the most extreme outflow velocities is co-spatial with the bright radio hot spot $\sim 0.5 \text{ kpc}$ west of the nucleus, underlining the importance of the jet in driving the outflow.

However, the high spatial resolution ALMA CO(2–1) observations presented in Morganti et al. (2015) give the best view of the complex interplay between the radio plasma ejected by the AGN and the molecular gas in the central regions of IC 5063. These observations have shown the presence of a central, bright

component of CO(2–1) emission (~ 1 kpc in size) which has a close spatial correspondence with the radio jet (see Fig. 1 in Morganti et al. 2015). In addition, this bright molecular gas has strongly disturbed kinematics, extending along the entire radio jet with outflow velocities up to 800 km s^{-1} with the highest outflow velocities occurring about 0.5 kpc from the nucleus, at the location of the bright hot-spot in the W lobe. The close spatial correspondence of this region of molecular gas having highly disturbed kinematics with the region of radio plasma, suggests a model – similar to, for example, presented in the simulations of Wagner et al. (2012) – where the radio plasma jet is expanding into a clumpy gaseous medium and it creates a cocoon of (shocked) gas which is pushed away from the jet axis resulting in a lateral expansion. In the simulations of Wagner et al. (2012), different zones in the gas affected by the AGN can be identified and, according to the model, different conditions must occur in these different zones. Thus, given that the molecular outflow in IC 5063 is spatially well resolved, this object is an ideal candidate for studying the physical conditions of the molecular outflows and to compare observations with models. A detailed comparison of our data with numerical models will be done in a following paper (Mukherjee et al. 2017).

First results were presented in Dasyra et al. (2016) where new ALMA observations of the CO(4–3) transition were combined with the CO(2–1) data of Morganti et al. (2015). This combination showed that the physical conditions of the molecular gas in the jet-driven outflow are very different from those of the larger-scale quiescent molecular disk, with the former having much higher excitation temperatures. Importantly, the observed line ratios indicated that the outflowing gas is optically thin. This has important implications for how to convert the observed line intensity of the outflow to its mass and results in a lower estimate of the mass of the outflow compared to the optically thick case.

Here, we further expand on these results by presenting new ALMA observations exploring other tracers of the molecular gas: $^{12}\text{CO}(1-0)$, $^{12}\text{CO}(3-2)$, $^{13}\text{CO}(2-1)$ and $\text{HCO}^+(4-3)$. This larger range of molecular tracers allows more extensive characterisation of the physical conditions of the different kinematical components of the molecular gas. The structure of the paper is as follows: in Sect. 2 we describe the ALMA observations and the data reduction. In Sect. 3 we compare the spatial distribution and kinematics of the ^{12}CO lines, while in Sect. 4 we present the $\text{HCO}^+(4-3)$ and ^{13}CO observational results. In Sect. 5 we discuss the excitation of the gas in the various regions of the outflow and derive an estimate of the mass of the molecular outflow. In this section we also present estimates of the kinetic temperatures and densities for representative regions in the outflow and in the disk of IC 5063 derived using the RADEX non-LTE radiative transfer code² (van der Tak et al. 2007).

2. Observations and data reduction

The ALMA data discussed in this paper come from a number of observing sessions, while we also re-used our earlier ALMA observations of the CO(2–1) emission of IC 5063 published in Morganti et al. (2015). Since only the 12-m array was used and observations at very different frequencies are involved, we have taken care to use the proper array configurations for the different observations. This was done to ensure that the various observations have very similar spatial resolution, while in addition the uv coverages are as similar as possible such that sensitivity to different spatial scales is the same at different frequencies.

No signatures of missing large-scale flux (“negative bowl”) were present in any of the observations.

The CO(3–2) and $\text{HCO}^+(4-3)$ data were taken with Band 7 on March 22, 2016, using 37 antennas. The frequency setup of the telescope employed four observing bands. Two high-resolution spectral windows, each having a total bandwidth of 1.875 GHz split over 480 channels, were used to image the CO(3–2) (centred on 341.97 GHz) and the $\text{HCO}^+(4-3)$ emission (centred on 353.05 GHz) of IC 5063. In addition, two continuum spectral windows were used, each 2 GHz wide and having 128 channels, centred on 340.1 and 352.0 GHz. The total on-source observing time was about 0.5 h. Standard calibration observations were done, involving Titan, J2056–4714 and J2141–6411 as flux, bandpass and phase calibrators respectively.

To study the properties of the $^{13}\text{CO}(2-1)$ emission in IC 5063, we used ALMA in Band 6 on May 19 and 23, 2016, employing 38 and 35 antennas on the respective days. The total on-source observing time is 2.5 h. The calibration strategy is the same as for the Band 7 observations, except that Pallas was used as a flux calibrator. Two 2 GHz wide continuum spectral windows were used (at 230.0 and 232.5 GHz, each band covered with 128 channels) as well as a higher resolution spectral window centred on 217.8 GHz (1.875 GHz wide, using 960 channels).

Finally, the CO(1–0) emission of IC 5063 was observed with ALMA in Band 3 on July 25 and 26, 2016 using 45 antennas. The total on-source time was 1.9 h. High spectral resolution data were taken using a 1.875 GHz wide band (960 channels) centred on 114.0 GHz. Continuum spectral windows of 2 GHz wide centred on 100.1 and 101.9 GHz were used to image the continuum emission of IC 5063 in this band. Also for these observations, standard calibration was done, involving the same sources as for the $^{13}\text{CO}(2-1)$ observations.

For all observations, the initial calibration of the data was done in CASA³ (McMullin et al. 2007) using the calibration scripts and calibration data provided by ESO. We found, however, that we were able to significantly improve the dynamic range of the images and cubes by additional self calibration (phase only) of the continuum images of IC 5063 and apply these calibrations also to the line data. This self calibration and all subsequent imaging and data reduction were done using the MIRIAD⁴ software (Sault et al. 1995) as well as self-made PYTHON scripts.

Our main aim is to study the relative strength of the different line transitions in different regions of IC 5063. Hence, when making the images and data cubes, care has to be taken that they have the same spatial and velocity resolution. In addition, it is well known that self calibration can introduce small position offsets in images. Therefore, we used the continuum images to determine possible offsets between data sets after the self calibration. We indeed found that the self calibration had introduced offsets of the order of 0.1 arcsec. All images and data cubes we present were corrected for these offsets.

The data cubes of the main CO transitions were made using the same spatial ($0''.1$ pixels) and velocity gridding (10 km s^{-1} channels, but Hanning smoothing was applied to the data cubes so that the velocity resolution is 20 km s^{-1}). From all three observations, data cubes were made using natural weighting. Although the uv coverages of the different observations are very similar, they are not identical. This resulted in small differences (of about $0''.05$) in the resolution of the data cubes of

³ <http://casa.nrao.edu>

⁴ <http://www.atnf.csiro.au/computing/software/miriad>

² <https://personal.sron.nl/~vdtak/radex/index.shtml>

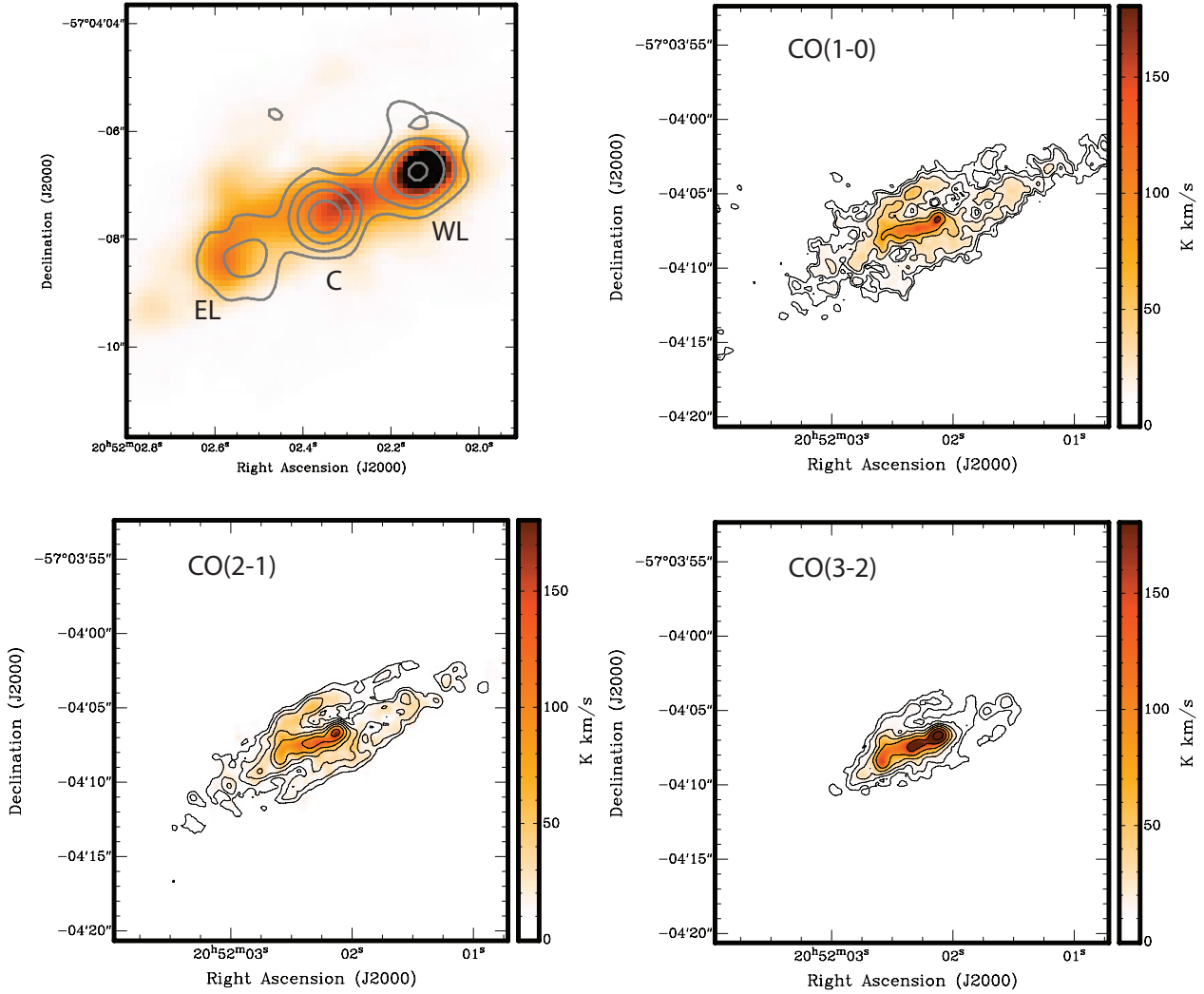


Fig. 2. *Top left:* integrated brightness temperature of the CO(3–2) emission (grey scale) with superposed the contours of the 346 GHz continuum, to illustrate the close spatial correspondence between the radio continuum and the bright, inner molecular structure. The core (C) and the eastern and western lobe (EL and WL respectively) are indicated. Contour levels are 0.15, 0.45, 1.35, and 4.05 mJy beam⁻¹. The other panels show the integrated brightness temperature for CO(1–0) (*top right*), CO(2–1) (*bottom left*) and CO(3–2) (*bottom right*). Contour levels are 5, 10, 20, 40, ... K km s⁻¹ for these three panels, while also the colour stretch is the same for these three images.

the different transitions. We corrected the data cubes for this by smoothing the data cubes to a common resolution. This resulted in data cubes having a resolution of 0^{''}.62. This corresponds, for the distance to IC 5063 assumed, to a linear resolution of 143 pc.

All cubes were cleaned using an iterative masking technique using a lower resolution version of a cube of a previous iteration to mask emission regions to be cleaned in the high-resolution cube in the next iteration. This ensures that the emission can be cleaned below the noise level while noise peaks are not included in the cleaning process. The noise level of the CO(1–0) data cube is 0.30 mJy beam⁻¹ (corresponding to 73.0 mK), of the CO(2–1) data cube 0.23 mJy beam⁻¹ (13.6 mK) and that of the CO(3–2) data cube 0.55 mJy beam⁻¹ (15.0 mK).

The HCO⁺(4–3) and the ¹³CO(2–1) data were initially treated in the same way as those of the main CO transitions and data cubes were made with the same spatial and velocity resolution as described above. However, as expected, the HCO⁺(4–3) and ¹³CO(2–1) emission is much fainter than that of the main CO lines and in the full-resolution cubes the emission is detected only close to the noise level. Therefore, in order to improve the signal-to-noise of the emission, we tapered the

data to much lower spatial and velocity resolution in order to better match the spatial and velocity structure of the emission. The HCO⁺(4–3) and ¹³CO(2–1) cubes we discuss have a spatial resolution of 1^{''}.52 (corresponding to about 350 pc) and a velocity resolution of 100 km s⁻¹. The noise level of the HCO⁺(4–3) cube is 0.90 mJy beam⁻¹ (3.8 mK) and of the ¹³CO(2–1) cube 0.18 mJy beam⁻¹ (2.0 mK). To enable comparison, data cubes with the same low spatial and velocity resolution were also made for the main CO transitions.

To study the relation between the molecular gas and the radio continuum emission, a continuum image was made (Fig. 2) by combining the continuum spectral windows observed at 340.1 and 352.0 GHz using multi-frequency synthesis (giving an effective frequency of about 346 GHz). Also here, natural weighting was used for gridding the *uv* data. The noise level of this continuum image is 50 μJy beam⁻¹ and the spatial resolution is 0^{''}.60. This continuum image shows the same triple structure seen at 8 GHz (Morganti et al. 1998, see also Fig. 1), 17.8 and 24.8 GHz (Morganti et al. 2007) and 230 GHz (Morganti et al. 2015). The central peak is the core of radio source which connects through jets to the eastern and western lobes. The great

similarity between the continuum images over this wide range of frequencies indicates that the bulk of the radio continuum at 346 GHz is non-thermal emission from the AGN and the radio lobes.

In the following, we first compare the distribution and kinematics of the various lines observed to study the overall impact of the radio jet on the molecular gas in the centre of IC 5063. This is followed by a more detailed analysis of the physical conditions of the gas in various regions in IC 5063.

3. Comparison between the main CO lines

3.1. Spatial distribution

One of the main aims of this paper is to further study the properties of the molecular gas participating in the fast outflow in IC 5063. In [Dasyra et al. \(2016\)](#) we found marked differences in the line ratio $R_{42} \equiv I_{4-3}/I_{2-1}$ between the outer disk and the inner regions. At many locations in the inner regions, R_{42} takes values well above 1, indicating optically thin conditions as well as excitation temperatures in the range 30–50 K and in some locations even higher. On the other hand, the low values found for R_{42} in the outer disk indicates sub-thermal excitation of the molecular gas there. The large contrast between the two regions signifies the impact of the radio jet on the gas in the central regions of IC 5063. Here, we will do a similar analysis of the conditions in the inner regions using our new observations.

As a first approach, we compare the sky distributions of the integrated intensity of the main CO transitions which are shown in Fig. 2. These images were made in a standard way, that is by masking the full-resolution data cubes using a 2σ clipped lower resolution version of the cubes, followed by integrating the masked, high-resolution cube over velocity.

Our earlier data ([Morganti et al. 2015](#); [Dasyra et al. 2016](#)) had already shown that the distribution of the molecular gas in IC 5063, as observed in the CO(2–1) and CO(4–3) lines, consists of a bright inner structure tightly surrounding the bright radio continuum emission of the core and radio lobes, and a more extended, lower surface brightness molecular counterpart of the large HI disk of IC 5063. Figure 2 shows that, as expected, this is also the case for the other CO transitions. Figure 2 also confirms the large difference of the relative brightness of the bright inner and the fainter outer regions in the different transitions with the inner region being relatively much brighter for the higher transitions. This is in line with the even larger contrast between the two components seen in the comparison of the CO(2–1) and CO(4–3) data presented in [Dasyra et al. \(2016\)](#).

To quantify this difference in contrast, we have computed, using the images given in Fig. 2, the spatial distribution of the ratio $R_{31} \equiv I_{3-2}/I_{1-0}$ (with I in K km s^{-1} ; see Fig. 3). The image of R_{31} clearly confirms that there are two distinct regions in IC 5063: an inner region with values of R_{31} well above 1, and an outer region with values below 0.5. A similar pattern is seen in images (not shown here) for the ratio $R_{32} \equiv I_{3-2}/I_{2-1}$ where R_{32} is around 1.0 or somewhat larger in the inner region and has values in the range 0.3–0.6 in the outer disk.

Figure 3 clearly shows that, either directly or indirectly, the radio jet in IC 5063 must be responsible for the very different conditions of the gas in the inner regions. In [Morganti et al. \(2015\)](#) and [Dasyra et al. \(2016\)](#) we had already observed that the bright, inner CO structure is spatially closely connected to the radio continuum and interpreted this as that the inner CO is bright because the radio jet strongly affects the excitation of the gas in the inner regions. Our new image of R_{31} shows this in dramatic

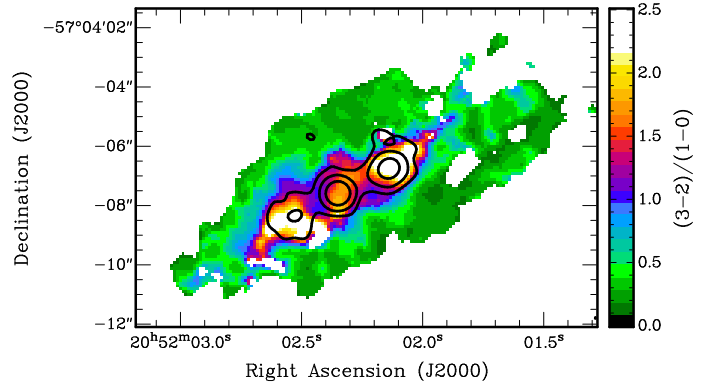


Fig. 3. Ratio R_{31} of the CO(3–2) and CO(1–0) integrated brightness temperatures I (in K km s^{-1}) of Fig. 2, after primary beam correction. Only those pixels are shown for which the error in R_{31} is smaller than 0.3. Overplotted are the contours of the 346 GHz continuum emission of IC 5063 with contour levels 0.15 (3σ), 0.6, 2.4, and $9.6 \text{ mJy beam}^{-1}$.

form: it is exactly the bright inner region where the high values for the line ratios are found and the region with high values of R_{31} very nicely encompasses the radio continuum. This is very similar to what seen in, for example, NGC 1068 where the region with high CO line ratios is also closely connected to the region of the AGN ([García-Burillo et al. 2014](#)).

In addition, Fig. 3 shows that the locations with the highest line ratios (with values well above 2.0) exactly coincide with the two lobes. We also note that the transition between the region with the high values of R_{31} to the region with lower values at larger radii is very sharp. This underlines that the region with very different conditions compared to the outer, quiescent disk, is limited to the direct environment of the radio jet.

We will not further discuss the molecular gas in the outer quiescent disk, other than that we note that R_{31} in these regions has quite low values, in the range 0.3–0.6. We find similar values in our data for, for example, $R_{32} \equiv I_{3-2}/I_{2-1}$. This is consistent with R_{42} being ~ 0.25 as we found in [Dasyra et al. \(2016\)](#) for the same region. The molecular gas in the star forming disks of spiral galaxies typically show values for $R_{21} \equiv I_{2-1}/I_{1-0} \sim 0.8$ (e.g., [Leroy et al. 2009](#)) implying higher values for R_{31} and R_{32} than seen here in the outer disk of IC 5063. Beyond the central regions, the gas density of the ISM in the disk of IC 5063, as well as the amount of star formation, is lower than that typically seen in star forming spiral galaxies ([Morganti et al. 1998](#)) and the low values of R_{31} , R_{32} and R_{42} in the disk of IC 5063 are likely due to, as suggested in [Dasyra et al. \(2016\)](#), the excitation of the molecular gas in the outer regions in IC 5063 being sub-thermal.

3.2. Kinematics of the main CO lines

The results of the previous section clearly show the spatial relationship between the jet and the conditions of the molecular gas. However, because R_{31} as discussed above is derived after integrating the CO emission over velocity, no kinematical information can be obtained. To study how the gas conditions depend on the kinematics of the gas, we produced position-velocity (pv) diagrams of the CO(1–0), CO(2–1) and CO(3–2) emission by averaging the CO data cubes over a width of $1''.5$ (corresponding to 350 pc) in the direction perpendicular to the jet axis (which we have taken to have position angle -65°). The resulting pv diagrams are shown in Fig. 4. The kinematics of the CO gas, in particular the fast outflow in the inner regions, and

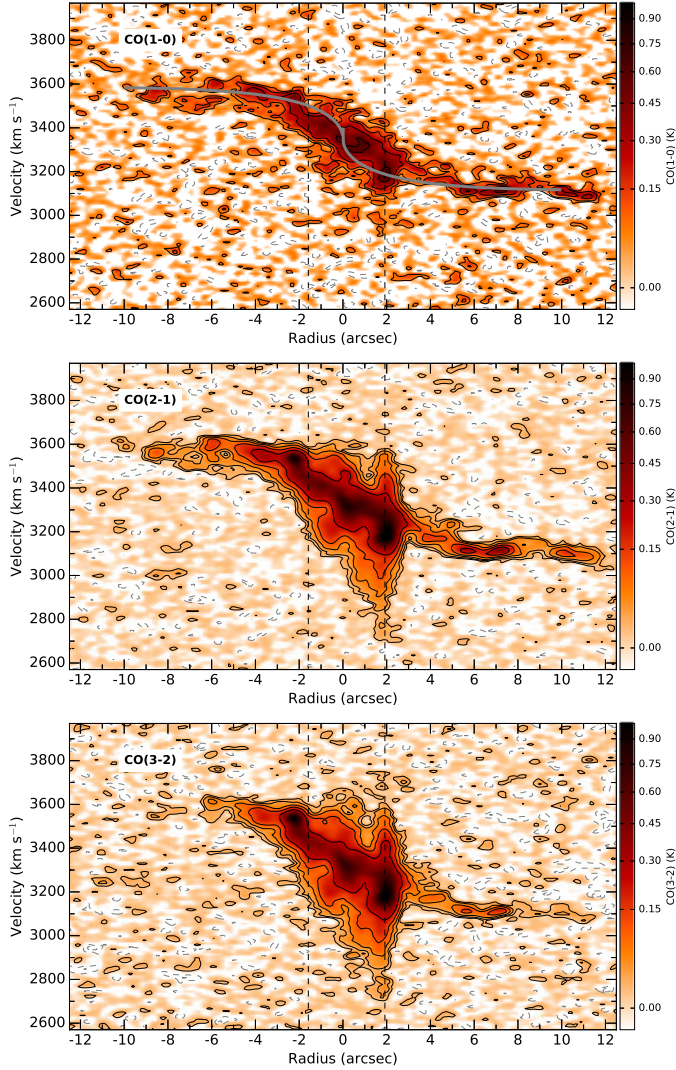


Fig. 4. Position-velocity plots along the jet axis for CO(1–0) (*top*), CO(2–1) (*middle*) and CO(3–2) (*bottom*) where the data have been averaged over 1.5 arcsec perpendicular to the jet axis. Contour levels are -71.25 (dashed), 71.25 (1.5σ), 142.5 , 285.0 , ... for the CO(1–0) data and -15 (dashed), 15 (1.5σ), 30 , 60 , ... mK for the other two panels. For all panels the colour stretch is the same. For display purposes, the data have not been corrected for the primary beam. The dashed vertical lines indicate the approximate extent of the radio continuum structure. Positive radii are west of the centre of IC 5063. The spatial resolution along the horizontal axis is $0''.63$. The grey curve in the top panel indicates where one would expect in this pv diagram to detect gas which follows the normal kinematics of a regularly rotating gas disk (i.e. gas not participating in the outflow; see text).

the connection to the radio jet in IC 5063, we have discussed extensively in Morganti et al. (2015) and Dasyra et al. (2016) and we only briefly comment on it here.

To give a rough indication where one would expect in this pv diagram to detect gas which follows the normal kinematics of a regularly rotating gas disk (i.e. gas not participating in the outflow), we have, as we did in Morganti et al. (2015), indicated a rotation curve based on the HST photometry of IC 5063 of Kulkarni et al. (1998). This photometry shows that the light distribution can be accurately described using a de Vaucouleurs’ law. The rotation curve plotted is based on the assumption that light traces mass and that the mass distribution is spherical. These assumptions are most likely not entirely correct and

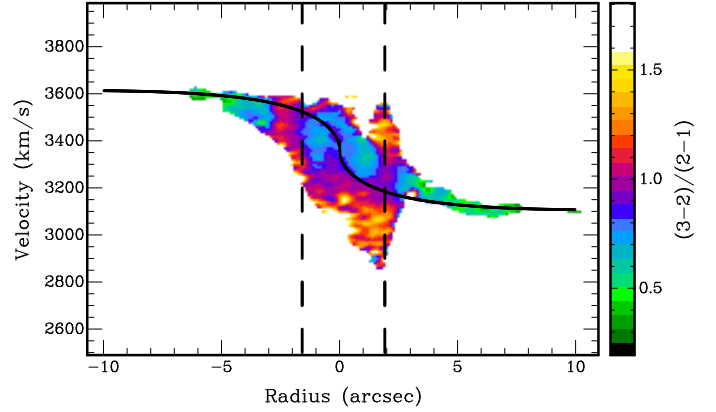


Fig. 5. Ratio R_{32} of the CO(3–2) and CO(2–1) brightness temperatures along the jet axis of IC 5063 where the data, before taking the ratio, have been averaged over 1.5 arcsec perpendicular to the jet axis (i.e. using the data presented in Fig. 4 after applying the primary beam corrections). Only ratios with error smaller than 0.3 are shown. The black curve indicates where one would expect in this pv diagram to detect gas which follows the normal kinematics of a regularly rotating gas disk (i.e. gas not participating in the outflow; see text). The black dashed vertical lines indicate the extent of the radio continuum.

therefore the rotation curve plotted is only approximate, but it suffices to illustrate the anomalous kinematics of the gas in the outflow. The horizontal scale of the rotation curve is set by the observed effective radius of the light distribution ($21''.5$ corresponding to 5.0 kpc), while the amplitude of the rotation curve is chosen such to match the rotation velocities of the outer disk. Since IC 5063 is observed almost edge on, regularly rotating gas is expected to lie in the regions with velocities between the plotted rotation curve and the systemic velocity ($V_{\text{hel}} = 3400 \text{ km s}^{-1}$, Morganti et al. 1998). Gas found in other regions of the pv diagram has “anomalous kinematics”, indicating non-circular motions which in this case mean that the gas is participating in the gas outflow.

The pv diagrams of the CO(2–1) and the CO(3–2) emission in Fig. 4 clearly show the fast molecular outflow, that is the presence of gas, for radii smaller than 2 arcseconds and exactly coinciding with the extent of the radio source, of which the kinematics strongly deviates from that expected for a regularly rotating disk, with differences up to 700 km s^{-1} . In many locations, the velocities of the gas even have the wrong sign compared to those of a regular disk, in particular near the western lobe where the fastest outflow velocities are seen. We also note the dramatic difference and sharp transition between the kinematics of the molecular gas in the region coinciding with the radio continuum ($r < 2''$) and the regular rotation of the large-scale quiescent disk beyond this radius.

The diagrams presented in Fig. 4 show that, similarly to those of Fig. 2, the inner, bright CO structure, including the fast outflow, is detected in an almost identical way in CO(2–1) and CO(3–2). The bright, inner ridge is also detected in CO(1–0), but the fast outflowing gas is much fainter (even considering the difference in sensitivity of the different observations). Below, we study in detail the flux ratios between the various lines we have detected in various locations, but to illustrate the main result, in Fig. 5 we show R_{32} as computed from the pv diagrams described above.

The striking feature in Fig. 5 is that there is a strong correlation between R_{32} and whether the velocities of the gas are anomalous or not. In the inner region, at velocities consistent

with those of a regularly rotating disk and not coinciding with the lobes, R_{32} has values in the range 0.7–0.8, while for gas with velocities well outside the expected range for a regular disk (i.e. the gas participating in the fast outflow), as well as the gas coinciding with the lobes, R_{32} is in the range 1.0–1.5. The regions with the highest outflow velocities, for example for radii between 0 and 2 arcsec and velocities below the rotation curve or above the systemic velocity, R_{32} is highest.

In Fig. 3 where we show R_{31} for the data integrated over velocity, it appears that the highest line ratios are found near the two radio lobes. However, Fig. 5 makes clear that this is, at least partially, due to mixing different components having different line ratios, leading to averaging of regular and jet-disturbed gas over velocity. Figure 5 shows that all along the radio jet, the emission with significant anomalous velocities has similar values for the line ratio as the gas near the lobes. This suggests that the highest excitation not only occurs in the direct vicinity of the lobes, but also between the core and the lobes, and not only for gas with large outflow velocities. The presence of gas with high excitation but relatively low *apparent* velocities indicates that the outflow is also occurring in the plane of the sky, that is perpendicular to the large-scale disk of IC 5063, as was also observed by Dasyra et al. (2015). The kinematics of the inner region with small line ratios is consistent with being the inner continuation of the outer disk and we may well see a mix of outflowing gas with large line ratios and regular disk gas with small ratios. The kinematical superposition of two such components was already recognised in Dasyra et al. (2016).

4. HCO⁺ and ¹³CO(2–1)

In an attempt to obtain more information about the physical conditions of the molecular gas in the inner regions of IC 5063 (see Sect. 5 for details), we also observed the galaxy in the $J = 4-3$ transition of HCO⁺ as well as in the ¹³CO(2–1) line. As mentioned above, emission is detected in these two lines, but of course at a much lower level compared to the main CO transitions and we smoothed the data to lower spatial and velocity resolution in order to better match them to the spatial and velocity structure of the emission. The HCO⁺ and ¹³CO(2–1) cubes we discuss here have a spatial resolution of 1 $^{\prime}$.52 and a velocity resolution of 100 km s⁻¹.

Figure 6 shows the position-velocity diagram of the HCO⁺(4–3) emission obtained in the same way as described above for the main CO lines (i.e. the spatial axis is along the radio jet). The superposition on the CO(3–2) emission shows that the bulk of the HCO⁺(4–3) emission comes from the bright, inner ridge detected in the main CO lines (which is likely a mix of disturbed and regular gas), but that some faint emission is detected from the fast outflow near the W lobe. Figure 7 shows the spatial distribution of the ratio of the low-resolution HCO⁺(4–3) and CO(2–1) brightness temperatures in the position-velocity diagrams where only those pixels are displayed that have an error in the line ratio smaller than 0.07. Although the HCO⁺(4–3) emission is detected at very faint levels and the errors in the ratios are relatively large, Fig. 7 nevertheless suggests that the line ratio of the gas of the outflow is substantially higher than of the more quiescent gas. Given the high critical density of the HCO⁺(4–3) line (1.8×10^6 cm⁻³; Greve et al. 2009) this indicates that the gas is much denser in the fast outflow. Relatively strong emission from HCO⁺ (and other high-density indicators such as HCN) has also been observed in other outflows, such as NGC 1068 (García-Burillo et al. 2014) and Mrk231

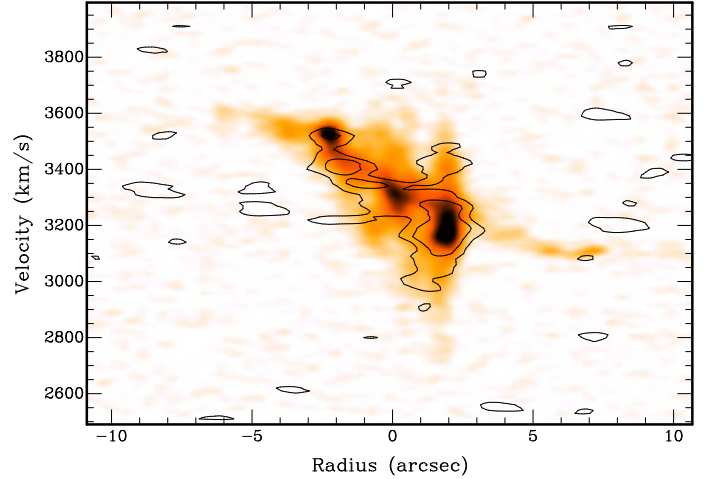


Fig. 6. Position-velocity diagram of the low-resolution HCO⁺(4–3) emission (contours) along the jet axis of IC 5063 where the data have been averaged over 1.5 arcsec perpendicular to the jet axis. The greyscale is the position-velocity slice of the full-resolution CO(3–2) data. Contour levels are 6.6 (2 σ) and 13.2 mK. The spatial resolution along the jet axis is 1 $^{\prime}$.52 and the velocity resolution of the HCO⁺(4–3) data is 100 km s⁻¹.

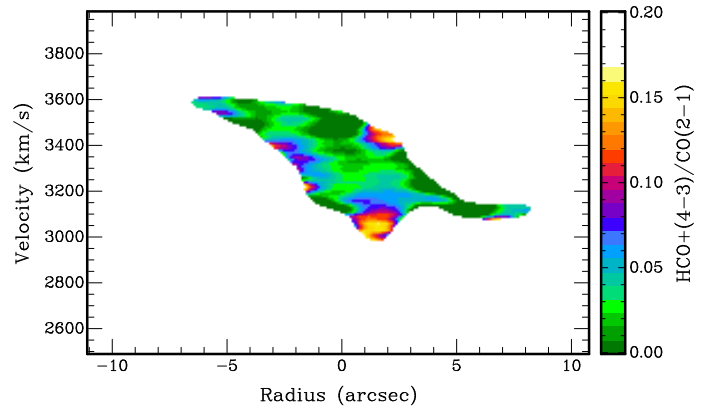


Fig. 7. Position-velocity diagram of the ratio of the low-resolution HCO⁺(4–3) and CO(2–1) brightness temperatures along the jet axis of IC 5063 where the data, before taking the ratio, have been averaged over 1.5 arcsec perpendicular to the jet axis. Only pixels for which the error in the ratio is smaller than 0.07 are shown. The spatial resolution along the jet axis is 1 $^{\prime}$.52.

(Aalto et al. 2012; Cicone et al. 2012; Feruglio et al. 2015), and IC 5063 conforms to this rule.

Figure 8 shows the position-velocity diagram of the ¹³CO(2–1) emission. Here, only emission is detected from the bright, inner region and from the undisturbed outer disk. Figure 9 shows the ratio of the ¹³CO(2–1) and ¹²CO(2–1) brightness temperatures for those locations where the error in this ratio is smaller than 0.07. Because no ¹³CO(2–1) emission is detected from the outflow, for this gas we can only set an upper limit to the line ratio. The figure shows that there is a clear relation between this line ratio and the kinematics of the gas and that the interaction of the radio jet with the ISM strongly impacts on the optical thickness of the clouds. High values (on average 0.13; see Sect. 5.3) are observed in the outer disk and much lower values in the outflow (below 0.05). Fairly low values (around 0.05) are found in the bright inner structure and in the radio lobes for gas at normal velocities. This may indicate intermediate conditions there, or

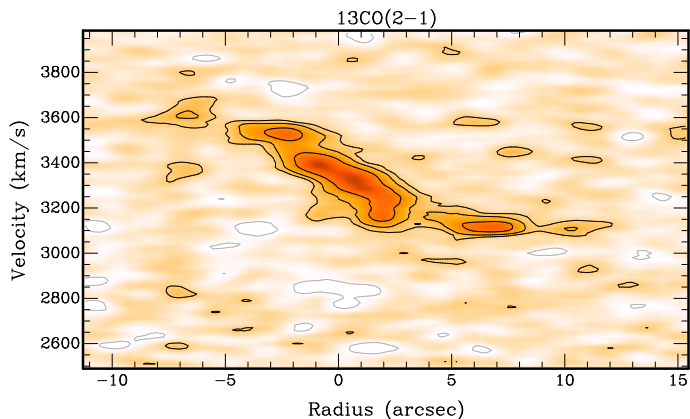


Fig. 8. Position-velocity diagram of the low-resolution $^{13}\text{CO}(2-1)$ emission along the jet axis of IC 5063 where the data have been averaged over 1.5 arcsec perpendicular to the jet axis. Contour levels are -3.6 , 3.6 (2σ), 7.2 , and 14.4 mK. The spatial resolution along the jet axis is $1''.52$.

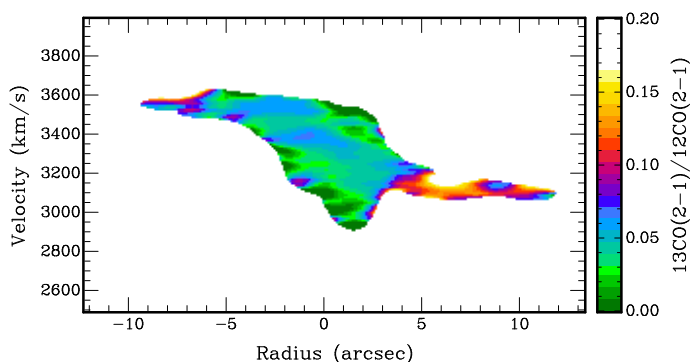


Fig. 9. Position-velocity diagram of the ratio of the low-resolution $^{13}\text{CO}(2-1)$ and $^{12}\text{CO}(2-1)$ brightness temperatures along the jet axis of IC 5063 where the data, before taking the ratio, have been averaged over 1.5 arcsec perpendicular to the jet axis. Only pixels for which the error in the ratio is smaller than 0.07 are shown. For the regions in the diagram where the fast outflow is occurring, the values should be regarded as upper limits since no $^{13}\text{CO}(2-1)$ emission is detected there. The spatial resolution along the jet axis is $1''.52$.

that two components, one with low and one with high line ratios, are superposed.

The ratio $^{13}\text{CO}(2-1)/^{12}\text{CO}(2-1)$ depends on many factors, such as abundance, turbulence and optical depth effects. In relatively normal early-type galaxies, observed values for $^{13}\text{CO}(2-1)/^{12}\text{CO}(2-1)$ in general cover the range 0.05–0.3 (e.g. Crocker et al. 2012; Alatalo et al. 2015) where the lower values are found in galaxies where the gas is disturbed by interactions or other sources of turbulence such as star formation. Ratios in the upper part of this range are found in more quiescent conditions. Crocker et al. (2012) argue that these observed trends are mainly driven by optical depth effects. The differences in $^{13}\text{CO}(2-1)/^{12}\text{CO}(2-1)$ we see within IC 5063 mimic the same trend. The very low line ratios (below 0.015) occurring in the region of the fastest outflow confirm the optical thin conditions for this emission. For the gas in the bright, inner region, as well as for the gas near the radio lobes, somewhat higher line ratios are found, but the ratios are still low compared to many other early-type galaxies. This may indicate that the gas is mildly optically thick there, or that we see a superposition of optically thin and thick gas. The much higher ratios in the outer disk or typical of

regular gas disks and clearly show that optical thick conditions are present in the outer region.

5. Discussion

5.1. Excitation temperatures

The results presented above give clear evidence that a significant fraction of the molecular gas is strongly affected by the interaction with the radio jet and its surrounding cocoon, both in terms of the kinematics and in terms of the physical conditions of the gas. In an elongated structure around the radio continuum source, R_{32} has values larger than 1 and at many locations, in particular near the radio lobes, R_{31} is even larger than 2 (Figs. 4, 5 and 3). The gas that has these high line ratios is also the gas that participates in the outflow. This is quite consistent with the results derived from comparing the $\text{CO}(4-3)$ emission of IC 5063 with that of $\text{CO}(2-1)$ by Dasyra et al. (2016). There we found that, in general, the jet affected gas has $R_{42} > 1.0$ and at some locations this ratio is even quite larger than this value. Such values suggest high excitation temperatures as well as that the CO emission is optically thin since such ratios are significantly above the maximum value of 1 for optically thick emission. Given that in our data we also see line ratios (much) larger than 1.0, our data reaffirm the high excitations and that the emission from the jet affected gas is optically thin. The low values for $^{13}\text{CO}(2-1)/^{12}\text{CO}(2-1)$ we observe for the outflowing gas also indicate this.

Below, we do a more detailed analysis of the conditions of the molecular gas using RADEX non-LTE modelling, but first we derive estimates of the excitation temperature of the outflowing CO gas by assuming local thermodynamic equilibrium (LTE) and that the gas is optically thin. For these assumptions, the average value of $\langle R_{32} \rangle = 1.25$ (for details, see below) for the gas with the most extreme outflow velocities indicates an excitation temperature of $T_{\text{ex}} = 29$ K, in good agreement with the value of $T_{\text{ex}} = 32$ K found in Dasyra et al. (2016) as being characteristic for much of this gas.

Another finding of Dasyra et al. (2016) is that in some small regions, R_{42} has values higher than 1.25, implying that locally, T_{ex} is well above 30 K. The images of R_{32} presented in Figs. 3 and 5 do not show such locations, but given that these images were computed from information integrated either spatially or in velocity, such small spots may have been averaged away in the process. To access the presence of regions with high line ratios, we have also computed pixel-by-pixel R_{32} ratios using the original three-dimensional data cubes, resulting in a three-dimensional dataset containing R_{32} for each 3D pixel. We have not done this for line ratios involving $\text{CO}(1-0)$ because the signal-to-noise of the emission of the outflowing gas is too low in the $\text{CO}(1-0)$ cube. The highest values for R_{32} we find in this way are around 1.65. Such values correspond to $T_{\text{ex}} = 54$ K assuming optically thin emission and LTE. This is in good agreement with Dasyra et al. (2016) where we find $T_{\text{ex}} = 56$ K for the fastest outflowing gas.

To illustrate the location of the gas with these highest line ratios, we selected only those pixels in the $\text{CO}(2-1)$ data cube for which $R_{32} > 1.55$ and for which the error in R_{32} is smaller than 0.5. Using this selection of pixels in the data cube, we produced an image of the integrated $\text{CO}(2-1)$ brightness of the emission for which $R_{32} > 1.55$ and this is shown in Fig. 10. This figure shows that the gas with highest line ratios is located near the western lobe and between that lobe and the core, but, in fact, not coincident with the peak of the W lobe itself. In addition,

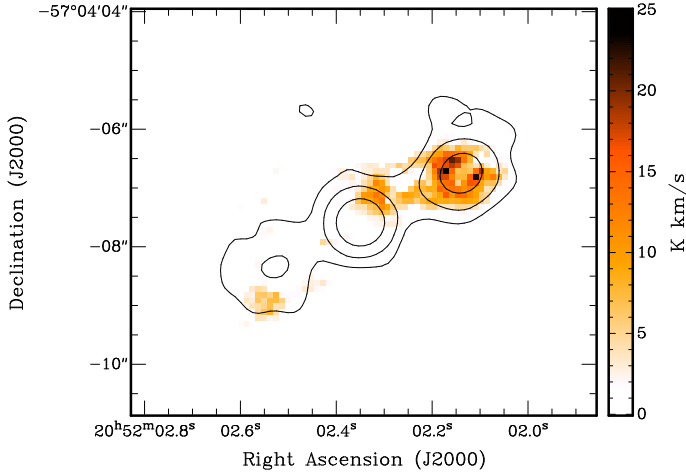


Fig. 10. Integrated CO(2–1) intensity using only these pixels in the three-dimensional data cube for which $R_{32} > 1.55$ and the error in R_{32} is smaller than 0.5. Contours represent the 346 GHz continuum with levels 0.15, 0.6, and 2.4 mJy beam⁻¹.

inspection of the data cubes shows that the outflow velocities of this gas are high, but not as high as the most extreme velocities seen near the W lobe. The locations of very high excitation gas we see here with those seen by Dasyra et al. (2016) roughly coincide. We note that only a small fraction ($\sim 5\%$) of the total CO(2–1) and CO(3–2) emission comes from gas with this very high excitation.

5.2. Mass estimates

As we remarked in Dasyra et al. (2016), the fact that the molecular outflow appears to be optically thin affects the estimate of the mass in the molecular outflow compared to the one reported by Morganti et al. (2015) where it was assumed the emission is optically thick⁵. To estimate the amount of CO gas participating in the outflow, we have estimated the flux integral of the outflowing gas by adding the flux from all 3D pixels in the CO(2–1) cube, and similarly in the CO(3–2) cube, for which $R_{32} > 1.0$, taking this limit as a clear indication that the gas is affected by the radio jet. The flux integrals we find are 9.5 Jy km s⁻¹ for the CO(2–1) line and 25.3 Jy km s⁻¹ for the CO(3–2) line. Given the uncertainties in separating the outflowing gas from the gas with regular kinematics, the flux integral we find for the CO(2–1) lines compares well with the values of 10.0 Jy km s⁻¹ and 12.3 Jy km s⁻¹ given by Morganti et al. (2015) and Dasyra et al. (2016) respectively. These latter two values were derived using the kinematics to separate outflowing- and regular gas, instead of line ratios. Both methods likely underestimate the flux of the outflowing gas because, as Fig. 5 shows, at many pixels in the data cubes, regular and outflowing gas are superposed. Depending on the relative mix of regular and outflowing gas, the measured value for R_{31} can be lower than 1.0 even if a significant component of outflowing gas is present. To illustrate the effect of this: lowering the value of R_{32} to separate the two components to 0.9 instead of 1.0, roughly doubles the flux integrals.

For the optically thin regime, the CO-luminosity-to- H_2 -mass conversion factor (α_{CO}) depends somewhat on the excitation temperature. For $T_{\text{ex}} = 29$ K the conversion factor $\alpha_{\text{CO}} = 0.25$ K km s⁻¹ pc² (Bolatto et al. 2013). Using this conversion

⁵ Due to a numerical error, the mass estimate in that paper is about a factor 4 too high.

factor, the above flux integrals imply that the mass of the molecular gas participating in the outflow is $1.3 \times 10^6 M_{\odot}$ based on the CO(2–1) flux integral and $1.1 \times 10^6 M_{\odot}$ from the CO(3–2) data. This is about a factor 3 lower than would be derived assuming optically thick emission. Under the assumptions of optically thin emission and LTE, the mass estimate depends on the excitation temperature T_{ex} . If one uses the highest excitation temperatures we observe (~ 55 K), the mass estimate roughly doubles. However, the main uncertainty in the mass estimate comes from the uncertainties in the separation of regular and anomalous gas. The results mentioned above from lowering the value of R_{32} to separate components suggest that the masses reported here are very likely lower limits and the true mass of molecular gas participating in the outflow could be a factor of a few larger. This means that the cold molecular outflow is about as massive as the atomic outflow ($3.6 \times 10^6 M_{\odot}$, Morganti et al. 2007), and much more massive than that of other gas phases (Morganti et al. 2007; Tadhunter et al. 2014). Our data clearly show that the impact of the jet on the inner regions of IC 5063 is very significant. However, compared to the mass of the entire ISM of IC 5063 ($\sim 5 \times 10^9 M_{\odot}$, Morganti et al. 1998), the mass of the outflowing gas is insignificant and the effect of the outflow on the galaxy as a whole is likely to be very limited.

The mass outflow rate can be estimated using $\dot{M} = 3vM/R$ (Maiolino et al. 2012) where M is the mass of the outflowing gas, R the size of the outflow region and v a representative outflow velocity. This assumes that the outflow has a spherical geometry. Using $R \sim 0.5$ kpc and $v = 300$ km s⁻¹ gives a gas mass outflow rate of the about $\sim 12 M_{\odot} \text{ yr}^{-1}$ or somewhat higher. This is quite modest compared to many other molecular outflows detected, but similar to the outflow rate observed in AGN of comparable luminosity as the one in IC 5063 (Fiore et al. 2017).

5.3. Kinetic temperature, density and pressure

Here, and in Dasyra et al. (2016), we find that the emission from the fastest outflow is consistent with arising in optically thin gas. If this gas is in LTE, it must be warm and dense. However, in much of the jet-impacted area we find $^{13}\text{CO}(2-1)/^{12}\text{CO}(2-1) \sim 0.04$. This indicates that the gas is mildly optically thick and therefore we will here perform a non-LTE analysis to investigate the temperature and density for different regions in IC 5063. In Fig. 6 we showed that the CO and HCO⁺ share the same dynamics and thus likely probe the same underlying gas distribution. We will therefore also include the HCO⁺(4–3) line in our analysis.

We use the RADEX non-LTE radiative transfer code to estimate kinetic temperatures and densities for representative regions in the outflow and in the disk of IC 5063. Gas heating and excitation models will be presented in a forthcoming paper (Oonk et al., in prep.). To provide the necessary input for the modelling, we computed line ratios for four representative regions, indicated in Fig. 11, covering the various conditions of the molecular gas. The regions defined include the fast outflow (FO) at the western lobe, the outflowing gas in the more central regions (O), the gas at the locations of the two lobes, but at velocities close to those expected for regular rotation (L), and the gas in the outer disk (D). We defined these regions using the position-velocity diagrams and their layout is shown. For each of the regions, line ratios were computed and results are given in Table 1. To incorporate uncertainties in the absolute flux calibration of the different observations, we have assigned a minimum error of 5% in the flux estimates used (van Kempen et al. 2014).

Table 1. Flux integrals and line ratios for the regions defined in Fig. 11 and that were use as input for the RADEX modelling.

Region	$^{12}\text{CO}(2-1)$ (K km s $^{-1}$)	CO(2-1)/ CO(1-0)	CO(3-2)/ CO(1-0)	CO(3-2)/ CO(2-1)	$^{13}\text{CO}(2-1)/$ $^{12}\text{CO}(2-1)$	HCO $^+$ / CO(3-2)
fast outflow	52.6 ± 2.6	1.79 ± 0.51	2.08 ± 0.61	1.25 ± 0.09	<0.015	0.10 ± 0.025
outflow	425 ± 21	1.39 ± 0.15	1.37 ± 0.15	1.06 ± 0.07	0.030 ± 0.007	0.024 ± 0.011
lobes	270 ± 14	1.08 ± 0.09	0.99 ± 0.09	0.97 ± 0.07	0.047 ± 0.003	0.045 ± 0.005
disk	67.7 ± 3.4	0.40 ± 0.03	0.17 ± 0.01	0.39 ± 0.03	0.13 ± 0.01	<0.05

Notes. To incorporate uncertainties in the absolute flux calibration of the different observations, we have assigned a minimum error of 5% in the flux estimates used (van Kempen et al. 2014).

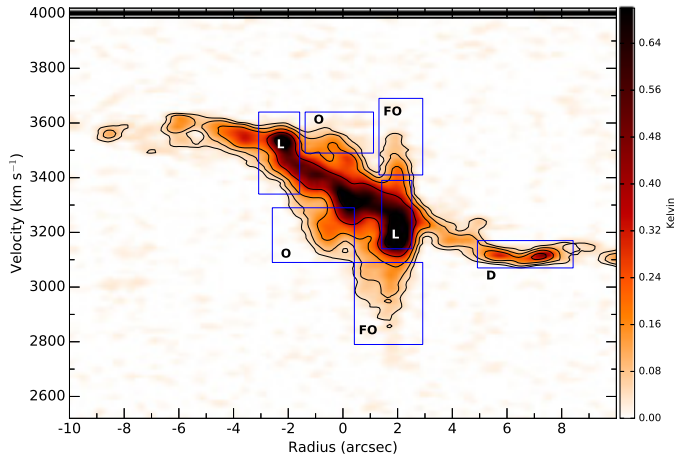


Fig. 11. Regions for which we computed line ratios as input for the RADEX modelling. The region labelled “FO” correspond to the fast outflow at the western lobe. Region labelled “O” to the outflow in the more central regions, while region “L” to the eastern and western radio lobes at velocities close to those for regular rotation. The region labelled “D” corresponds to the outer disk. The underlying grey scale is the position-velocity diagram of the CO(2-1) emission. Contour levels are 43.75, 87.5, 175.0, and 350 mK

The very dissimilar line ratios for the various regions in Table 1 clearly underline the different conditions for the gas in the different regions, in particular the large contrast between the outer disk and the regions affected by the radio jet. A first, main result that immediately emerges from Table 1 is that, while the ratios for the outer disk reflect the normal, quiescent conditions in the ISM in this region, the ratios in the jet-affected regions clearly indicate elevated temperatures and densities. Moreover, between the different regions affected by the jet, conditions are more extreme for gas with more extreme kinematics.

To attempt to obtain more information on this, we modelled the data using a single slab (1D) model with constant kinetic temperature and density and use the collision rates from the LAMBDA database Schöier et al. (2005). For each line ratio, we predict values for a common grid in T_{kin} and n_{H_2} (see Fig. 12). For T_{kin} , we sample the range from 10 to 200 K in logarithmic steps of 0.043 while for n_{H_2} we sample the range 10^2 to 10^7 cm $^{-3}$ in logarithmic steps of 0.167. We set the background temperature to 2.73 K and the line width to 100 km s $^{-1}$.

In general, the derived line ratios depend on the input ^{12}CO column density. We computed models with column densities in the range from 5×10^{15} to 1×10^{20} cm $^{-2}$ which we sampled in logarithmic steps of 0.5. For the ratio $^{12}\text{CO}/^{13}\text{CO}$ we have assumed 100. Given the sizeable errors in the line ratios involving ^{13}CO , varying this ratio between 50 and 200 gives similar results, within the errors. In general, good measurements of the

Table 2. RADEX analysis of the various regions in IC 5063 (see Fig. 11).

Region	$\langle N(^{12}\text{CO}) \rangle$ (cm $^{-2}$)	$\log T_{\text{kin}}$ (K)	$\log n_{\text{H}_2}$ (cm $^{-3}$)	$\log P$ (K cm $^{-3}$)
fast outflow	1.6×10^{16}	1.5–2.0	4.5–6.0	6.5–7.5
outflow	1.3×10^{17}	1.3–2.0	4.0–5.9	6.0–7.2
lobes	8.2×10^{16}	1.1–1.8	5.0–5.8	6.8–6.9
disk	3.7×10^{16}	1.0–2.3	2.0–4.0	4.3–5.0

Notes. Column 2 gives the observed area averaged ^{12}CO column density. These area averaged measured column densities are derived assuming LTE and optically thin conditions and $T_{\text{ex}} = 40$ K, $n = 10^5$ cm $^{-3}$ and $\Delta V = 100$ km s $^{-1}$. Columns 3–5 provide the allowed range in physical conditions derived from single slab RADEX models with column densities of 5×10^{18} cm $^{-2}$ or higher for the fast outflow, outflow and lobes region. For the disk region, the range given is for all models, also of lower column density.

abundance of HCO $^+$ relative to ^{12}CO are scarce in the literature and the HCO $^+$ abundance in IC 5063 is not known. The probably most relevant data are given by Viti et al. (2014) in their study of the circum-nuclear disk surrounding the AGN in NGC 1068. In this circum-nuclear disk they find a relatively high HCO $^+ / ^{12}\text{CO}$ ratio of $\sim 10^{-4}$. We therefore opted to use a similarly high value of 1.3×10^{-4} . Lowering the abundance has little effect because the HCO $^+(4-3)/\text{CO}(2-1)$ tracks shift to somewhat lower densities, but are still well within the error bars of the tracks of the nominal abundance. Increasing the abundance shifts the tracks to higher densities. This means that the results based on the nominal abundance give an indication of a lower bound to the gas density.

The results are illustrated in Fig. 12 and are summarised Table 2. Figure 12 shows, for two different assumed ^{12}CO column densities, the combinations of n_{H_2} and T_{kin} that reproduce the various line ratios for the various regions. The quality of models can be assessed by to what extent the different lines in the panels of Fig. 12 intersect in a common region.

The trends and differences visible in Fig. 12 are representative for the full range of column densities we considered (see below). The plots show that from the high signal-to-noise ^{12}CO measurements alone, we can obtain tight constraints on the combination of n_{H_2} and T_{kin} , but, as expected, there is a degeneracy between them in the models. Given the slope of the ^{12}CO tracks, the pressure (nT) is, however, somewhat better constrained. In principle, since the dependence of the HCO $^+ / ^{12}\text{CO}$ ratio on temperature and density is very different than that of the pure CO line ratios, one can use it to break the degeneracy, but the uncertainty in the HCO $^+(4-3)$ data limits its

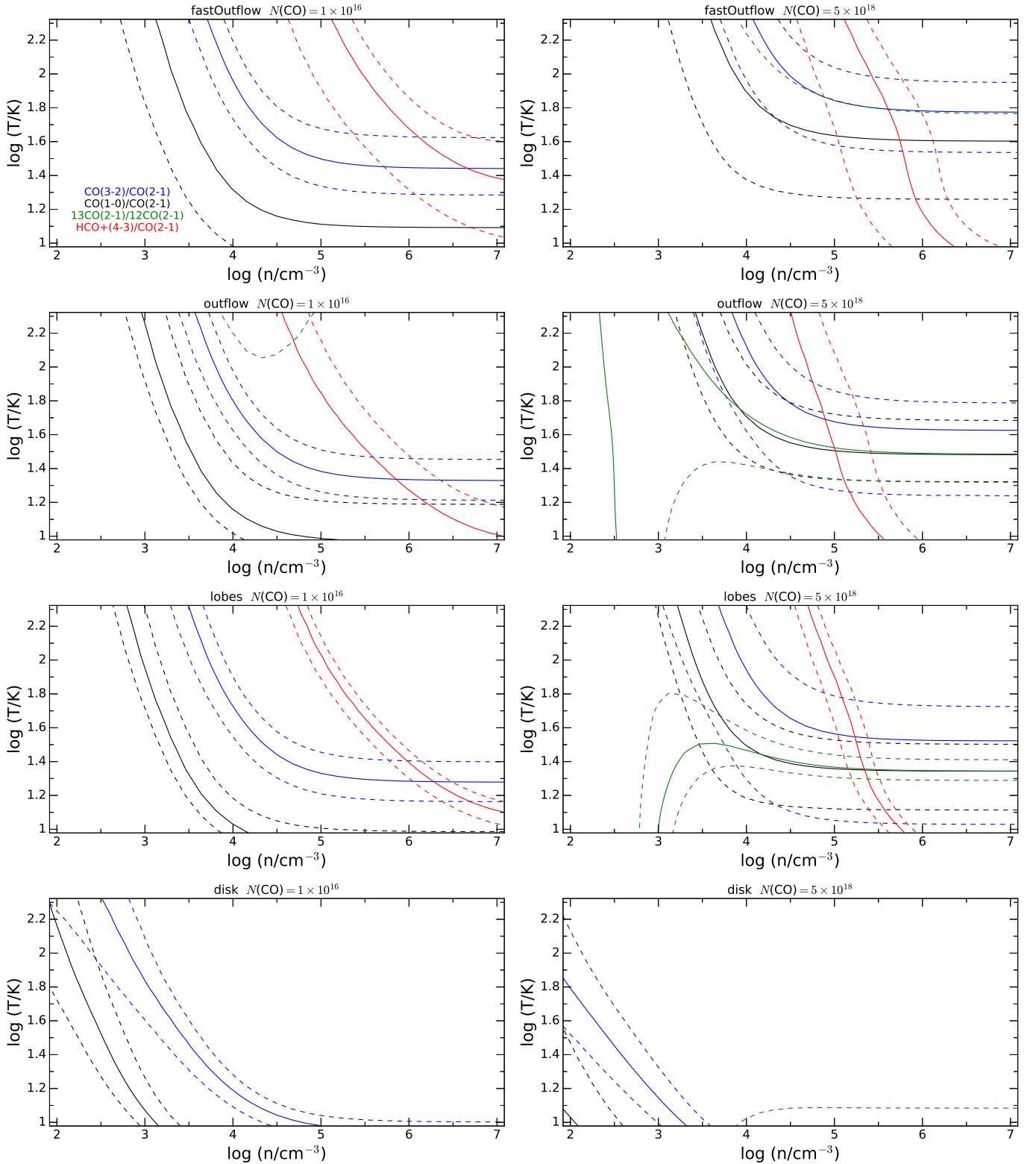


Fig. 12. RADEX models for the four regions (see Fig. 11). The constraints on n_{H_2} and T_{kin} from the various line ratios are indicated (solid lines) and their 3σ errors (dashed lines) for $N(^{12}\text{CO}) = 1 \times 10^{16} \text{ cm}^{-2}$ (left column) and for $N(^{12}\text{CO}) = 5 \times 10^{18} \text{ cm}^{-2}$ (right column).

use somewhat. For the outer disk it has no added value given the low densities of the ISM there.

We find that the diagrams for ^{12}CO column densities below 10^{18} cm^{-2} are all very similar to each other and those shown for $N(^{12}\text{CO}) = 10^{16} \text{ cm}^{-2}$ are representative for this

column density range. Here, the main CO line ratios do not quite occupy the same region of the diagrams, although for the fast outflow region, the CO(1-0)/CO(2-1) ratio does not provide much constraints. For the outflow and lobes regions, the mismatch between the different tracks may be due to the fact

that the observed line emission from these regions is a mix of gas with very different conditions, as discussed above, and modelling the line ratio with a model with only one component is not entirely appropriate. For the fast outflow region, gas mixing is not a problem. The two main CO lines, together with the $\text{HCO}^+(4-3)/\text{CO}(2-1)$ ratio, do not give a well defined solution. When focussing on the $\text{CO}(3-2)/\text{CO}(2-1)$ (involving the strongest lines detected) and the $\text{HCO}^+(4-3)/\text{CO}(2-1)$ ratios, the low column density models indicate gas with high density ($10^5 < n < 10^7 \text{ cm}^{-3}$) and T_{kin} between 20 and 50 K for the jet affected gas, with the higher densities and temperatures in the fast outflow region, but this may be related to the mixing of line emission for the outflow and lobes regions discussed above. The resulting pressures are in the range $10^6-10^{7.5} \text{ K cm}^{-3}$.

When increasing the column density above 10^{18} cm^{-2} , the character of the diagrams changes and this is illustrated in the right-hand column of Fig. 12. For the jet-affected regions, the tracks of the CO lines shift to higher temperatures and density, while the $\text{HCO}^+(4-3)/\text{CO}$ track shifts to lower density. Instead, for the disk region the CO tracks move to lower density and temperature. This is likely an optical depth effect with the high-excitation gas being optically thin (according to the RADEX models with optical depth in the range $10^{-4}-10^{-3}$) and the disk gas optically thick. In particular, the tracks of the main CO lines in the diagrams of the jet-affected regions become more consistent with each other and the models somewhat better define a solution and therefore the models with high CO column densities in the jet affected regions, in the range $5 \times 10^{18}-5 \times 10^{19} \text{ cm}^{-2}$, could be preferred. This may indicate that the true ^{12}CO column densities in the outflowing gas are at least two orders of magnitude larger than the observed ones, assuming LTE, optically thin conditions, and that the emission fills the beam and which are in the range $10^{16}-10^{17} \text{ cm}^{-2}$ (see Table 2). Since the observed column densities are an average over the ALMA beam, this would mean that gas is very clumpy and that the filling factor of these clumps over the beam is low, at the level of 1% or lower. The peak ^{12}CO brightness temperatures observed in our data are around 1 K which also indicate, for optically thick emission and the excitation temperatures observed, that the gas is clumpy.

The densities resulting from these models are slightly lower than those for the low column density models, but the temperatures are higher and could be as high at 100 K. The pressures are similar as for the low column density models and are in the range $10^{6.0}-10^{7.5} \text{ K cm}^{-3}$. Also for these models, the fast outflow region has somewhat higher density and temperature (and hence pressure) than the outflow and lobes regions defined in Table 2.

For the disk region, since only ratios involving CO lines are available, the models mainly provide constraints to the combination of T_{kin} and n and not so much to these parameters separately. Nevertheless, it is clear that the densities in the disk are at least two orders of magnitude lower than in the jet affected regions. Given the slope of the tracks of the CO ratios, the pressure in the disk is better constrained and is in the range $10^4-10^5 \text{ K cm}^{-3}$ for the low column density models and about an order of magnitude lower for the high column density models.

Although there are uncertainties in the modelling discussed above, nevertheless a fairly clear picture emerges about the physical conditions of the molecular gas in the outflow in IC 5063 that we can summarise as follows: it is characterised by increased density and temperature, and the resulting pressure in the outflowing gas is at least two orders of magnitude higher than in the quiescent ISM of IC 5063. Moreover, the increase in all these physical parameters appears to be strongest for the gas participating in the fastest outflow. The much higher densities and

pressures of the gas of the outflow would suggest that the gas is compressed and accelerated by fast shocks driven by the expanding radio source. The alternative would be that the jets have hit unusually dense molecular material, but in that case the high (pre-cursor) densities would have to be maintained across the 1-kpc region encompassed by the radio components.

6. Conclusions

The ALMA observations we present in this paper of a number of tracers of the molecular gas in IC 5063 give a very detailed, spatially resolved view of the impact of a radio jet expanding in the ISM of a galaxy, both in terms of the kinematics and in terms of the physical conditions of the ISM. As seen in our earlier ALMA $\text{CO}(2-1)$ and $\text{CO}(4-3)$ observations (Morganti et al. 2015; Dasyra et al. 2016) of this object, the new data of the main ^{12}CO lines show the fast molecular outflow as a bright inner molecular structure, of about 1 kpc in size and closely associated with the radio jet, embedded in a larger, quiescent regularly rotating gas disk. Particularly striking is the difference in relative brightness in the different transitions of this inner molecular structure compared to that of the outer disk, with the inner structure being relatively brighter in the higher- J CO transitions (Fig. 2), showing that the gas in the inner molecular structure has very different properties than the gas in the outer disk.

Images and pv diagrams of the line ratios of the main CO lines (Figs. 3 and 5) clearly show that the outflow has high excitation over a region which is exactly coincident with the radio jet. These results confirm the model presented in Morganti et al. (2015), inspired by the simulations of Wagner et al. (2012), where the radio jet is working its way through a clumpy ISM, inflating a cocoon in the ISM which is driving the outflow.

At many locations along the entire jet, the line ratios R_{21} , R_{31} and R_{32} are well above 1.0. This confirms, as seen earlier in Dasyra et al. (2016) based on R_{42} , that the outflowing gas is optically thin and that it has high excitation temperatures. The $^{13}\text{CO}(2-1)$ data confirm that the outflow is optically thin. The observed line ratios indicate CO excitation temperatures around 30 K for much of the molecular outflow, but at some locations excitation temperatures as high as 54 K are observed, consistent with the results found in Dasyra et al. (2016).

The inner molecular structure is also detected in the $\text{HCO}^+(4-3)$ line and this emission is relatively bright in the fastest outflow in particular. This implies that the densities in the outflowing gas are high. This is consistent with what is observed in other molecular outflows, such as those in, for example, NGC 1068 (García-Burillo et al. 2014) and Mrk231 (Aalto et al. 2012; Ciccone et al. 2012; Feruglio et al. 2015)

Estimating the mass of the molecular outflow is complicated by the fact that at many locations in the data cube outflowing and quiescent gas are superposed, making a clean separation between the two impossible. We estimate the mass of the molecular outflow to be at least $\sim 10^6 M_{\odot}$ and, due to the difficulty in separating outflowing and quiescent gas, it is likely a factor of a few larger than this value. This means that the molecular outflow is similar in mass as the atomic outflow ($3.6 \times 10^6 M_{\odot}$, Morganti et al. 2007) and that the cold gas phases dominate the fast outflow in IC 5063 (Morganti et al. 2007). The mass outflow rate of the cold gas is $\sim 12 M_{\odot} \text{ yr}^{-1}$. This is lower than observed for many other molecular outflows (Fiore et al. 2017) and is likely connected to the fact that IC 5063 is a relatively weak radio AGN. The mass of the fast outflow in IC 5063 is only a small fraction of the mass of its total ISM (about $5 \times 10^9 M_{\odot}$, Morganti et al. 1998). The jet-ISM interaction clearly has a significant impact on the ISM

in the inner regions of the galaxy, but on the galaxy as a whole, the influence of the outflow will be much less.

We have explored the physical conditions of the molecular gas using RADEX non-LTE modelling of the observed line ratios in a number of regions of IC 5063. Models with the outflowing gas being quite clumpy give the most consistent results and our preferred solutions have kinetic temperatures in the range 20–100 K, densities ranging between 10^5 and 10^6 cm⁻³ and the resulting pressures being 10^6 – $10^{7.5}$ K cm⁻³, about two orders of magnitude higher than in the outer disk (Table 2). The higher densities and temperatures are found in the regions with the fastest outflow. The high densities and pressures observed for the outflow suggest that the gas is compressed and accelerated by fast shocks driven by the expanding radio structure.

The results presented in this paper are providing a reference case illustrating the impact of a jet driven by a relatively low-luminosity AGN expanding in a gas-rich, clumpy medium. Spatially resolved observations of outflows driven by higher power AGN are now also needed to build a more detailed picture of the complex processes involved and the impact of the AGN, both on the kinematics and on the physical conditions of the outflowing gas in order to provide realistic constraints for theoretical studies.

Acknowledgements. This paper makes use of the following ALMA data: ADS/JAO.ALMA#2012.1.00435.S and ADS/JAO.ALMA#2015.1.00467.S. ALMA is a partnership of ESO (representing its member states), NSF (USA), and NINS (Japan), together with NRC (Canada) and NSC, and ASIAA (Taiwan), in cooperation with the Republic of Chile. The Joint ALMA Observatory is operated by ESO, AUI/NRAO and NAOJ. The research leading to these results has received funding from the European Research Council under the European Union's Seventh Framework Programme (FP/2007–2013)/ERC Advanced Grant RADIOLIFE-320745.

References

- Aalto, S., García-Burillo, S., Müller, S., et al. 2012, *A&A*, **537**, A44
 Alatalo, K., Blitz, L., Young, L. M., et al. 2011, *ApJ*, **735**, 88
 Alatalo, K., Crocker, A. F., Aalto, S., et al. 2015, *MNRAS*, **450**, 3874
 Bolatto, A. D., Wolfire, M., & Leroy, A. K. 2013, *ARA&A*, **51**, 207
 Braine, J., & Combes, F. 1992, *A&A*, **264**, 433
 Cicone, C., Feruglio, C., Maiolino, R., et al. 2012, *A&A*, **543**, A9
 Cicone, C., Maiolino, R., Sturm, E., et al. 2014, *A&A*, **562**, A21
 Combes, F., García-Burillo, S., Casasola, V., et al. 2013, *A&A*, **558**, A124
 Crocker, A., Krips, M., Bureau, M., et al. 2012, *MNRAS*, **421**, 1298
 Dasyra, K. M., & Combes, F. 2011, *A&A*, **533**, L10
 Dasyra, K. M., & Combes, F. 2012, *A&A*, **541**, L7
 Dasyra, K. M., Combes, F., Novak, G. S., et al. 2014, *A&A*, **565**, A46
 Dasyra, K. M., Bostrom, A. C., Combes, F., & Vlahakis, N. 2015, *ApJ*, **815**, 34
 Dasyra, K. M., Combes, F., Oosterloo, T., et al. 2016, *A&A*, **595**, L7
 Feruglio, C., Maiolino, R., Piconcelli, E., et al. 2010, *A&A*, **518**, L155
 Feruglio, C., Fiore, F., Carniani, S., et al. 2015, *A&A*, **583**, A99
 Fiore, F., Feruglio, C., Shankar, F., et al. 2017, *A&A*, **601**, A143
 García-Burillo, S., Combes, F., Usero, A., et al. 2014, *A&A*, **567**, A125
 Greve, T. R., Papadopoulos, P. P., Gao, Y., & Radford, S. J. E. 2009, *ApJ*, **692**, 1432
 Leroy, A. K., Walter, F., Bigiel, F., et al. 2009, *AJ*, **137**, 4670
 Kulkarni, V. P., Calzetti, D., Bergeron, L. et al. 1998, *ApJ*, **492**, L121
 Maiolino, R., Gallerani, S., Neri, R., et al. 2012, *MNRAS*, **425**, L66
 Maiolino, R., Russell, H. R., Fabian, A. C., et al. 2017, *Nature*, **544**, 202
 McMullin, J. P., Waters, B., Schiebel, D., Young, W., & Golap, K. 2007, *ASP Conf. Ser.*, **376**, 127
 Morganti, R., Oosterloo, T. A., Tsvetanov, & Z. 1998, *AJ*, **115**, 915
 Morganti, R., Holt, J., Saripalli, L., Oosterloo, T. A., & Tadhunter, C. N. 2007, *A&A*, **476**, 735
 Morganti, R., Frieswijk, W., Oonk, R., Oosterloo, T., & Tadhunter, C. 2013, *A&A*, **552**, L4
 Morganti, R., Oosterloo, T., Oonk, J. B. R., Frieswijk, W., & Tadhunter, C. 2015, *A&A*, **580**, A1
 Mukherjee, D., Wagner, A. Y., Bicknell, G. V., et al. 2017, *MNRAS*, submitted
 Oosterloo, T., Morganti, R., Tzioumis, A., et al. 2000, *AJ*, **119**, 2085
 Sault, R. J., Teuben, P. J., & Wright, M. C. H. 1995, *ASP Conf. Ser.*, **77**, 433
 van der Tak, F. F. S., Black, J. H., Schöier, F. L., Jansen, D. J., & van Dishoeck, E. F. 2007, *A&A*, **468**, 627
 Schöier, F. L., van der Tak, F. F. S., van Dishoeck, E. F., & Black, J. H. 2005, *A&A*, **432**, 369
 Silk, J. 2013, *ApJ*, **772**, 112
 Tadhunter, C., Morganti, R., Rose, M., Oonk, J. B. R., & Oosterloo, T. 2014, *Nature*, **511**, 440
 Tsvetanov, Z., Fosbury, R. A. E., & Tadhunter, C. N. 1997, unpublished
 van Kempen, T. A., Kneissl, R., Marcelino, N., et al. 2014, *ALMA Memo*, 599
 Viti, S., García-Burillo, S., Fuente, A., et al. 2014, *A&A*, **570**, A28
 Wagner, A. Y., Bicknell, G. V., & Umemura, M. 2012, *ApJ*, **757**, 136