

See discussions, stats, and author profiles for this publication at: <https://www.researchgate.net/publication/275040140>

Interactive BYOD Sessions with Moodle during Lectures EDUCAUSE 2014

Data · September 2014

DOI: 10.13140/RG.2.1.2346.9607

CITATIONS

0

READS

24

3 authors, including:



Thierry Koscielniak

Conservatoire National des Arts et Métiers

21 PUBLICATIONS 202 CITATIONS

SEE PROFILE



Sonia Badeau

4 PUBLICATIONS 1 CITATION

SEE PROFILE

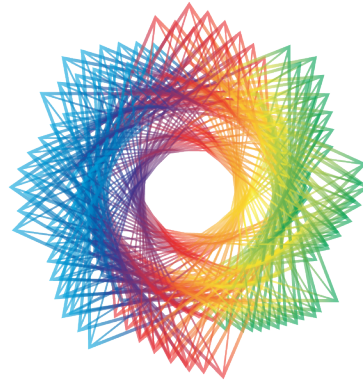
Some of the authors of this publication are also working on these related projects:



Active watch on Educational Technologies [View project](#)



PhD Thesis [View project](#)



EDUCAUSE 2014

ANNUAL CONFERENCE

**Interactive BYOD Sessions with Moodle during
Lectures at Paris Descartes University**



Thierry Koscielniak
Digital Pedagogy Executive Director



Abstract

This poster investigates a Paris Descartes University initiative to develop BYOD program into the learning and teaching process.

The idea behind this BYOD strategy is that students use their Wi-Fi connected personal devices to answer Moodle quizzes during lectures, allowing teachers to collect and display active feedbacks within minutes.

Authors

Thierry Koscielniak, Digital Pedagogy Executive Director

Xavier Coumoul, Biomedical Sciences Professor

Sonia Badeau-Mahmoud, Pedagogical Engineer



Description

Paris Descartes University aims high to promote and integrate ICT in learning and teaching.

We notice that the number of students' personal mobile devices increases in higher education context: this assumption confirms that these devices will be used to complement learning activities.

One strategy is to implement BYOD (Bring Your Own Device) programs. BYOD refers to “[...] technology models where students bring a personally owned device to [university] for the purpose of learning.” (Alberta Education. (2012). Bring your own device: a guide for schools. Edmonton: Alberta Education.)

Using BYOD is an innovative way to create and animate interactive lectures.

This poster will present uses at Paris Descartes University since 2012 and will show how BYOD can enhance and impact students' motivation.

The LMS Moodle was not only used as a platform but also as an authoring tool to:

- create question banks;
- allow student to real-time respond to the questions;
- allow both teachers and students to see results live during the lecture.

A « Moodle Remote Control » has been developed in our department to ease the way the teachers toggle from their slideshow to quizzes results. The students will also soon get the same « virtual voting device ».

Teachers and instructional designers (AKA pedagogical engineers) are thus able to design interactive and engaging lessons and projects, in a sole place and with the same tool.

We are convinced that the devices that students embed in their daily life may change education: the experiments and their generalization show us that linking BYOD use in an instructional situation can improve student comprehension, learning and motivation.

The Lecture Revolution



All Rights Reserved

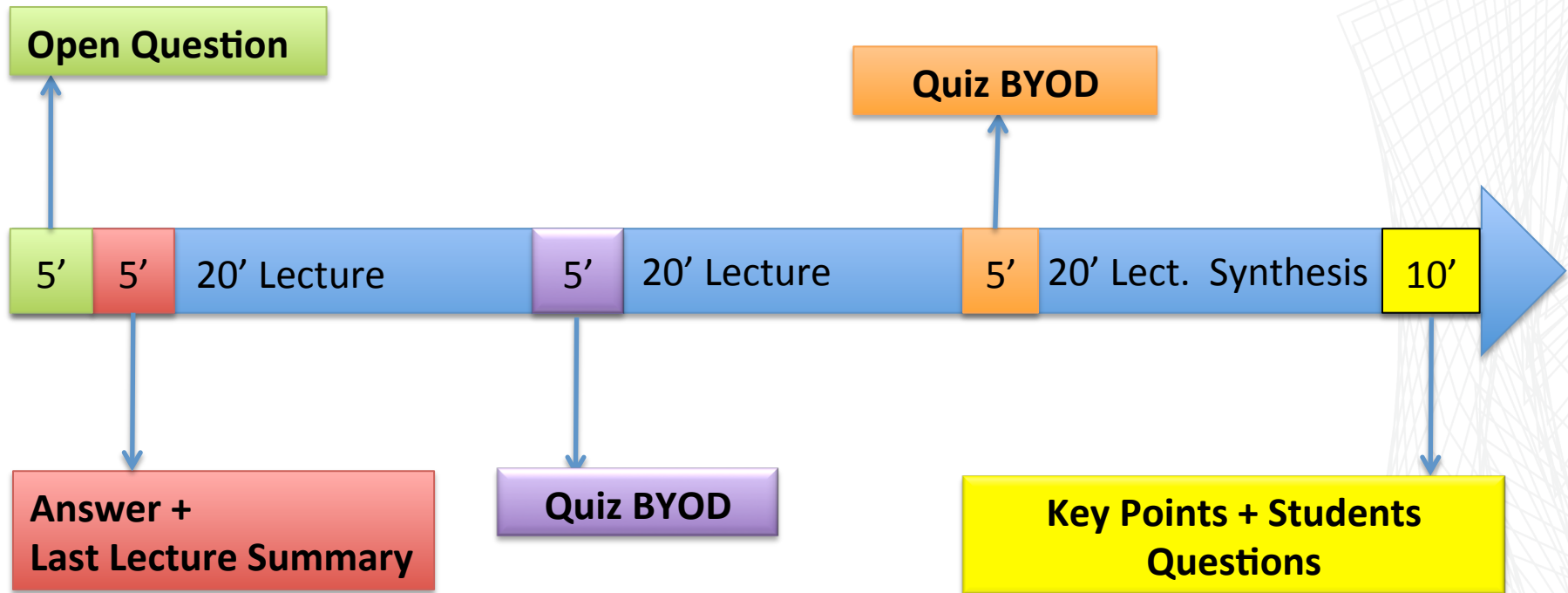
Needs and Actions

- Challenging the students at key moments to catch their attention
- The students are passive if they are only asked to answer with their hands up
- The students have to use their own digital devices to answer
- The teachers show the results interactively
- BYOD (Bring Your Own Device) + LMS Moodle: no need to use voting devices

Pedagogical Objectives

- to revive students' attention;
- to enhance students' motivation;
- to introduce an exchange within the traditional lecture;
- to compare his point of view with his peers;
- to manage "questions after debate";
- to give an immediate feedback to the students.

Interactives Lectures: Teacher's Questions



Credits: Prof. Xavier Coumoul - College of Biomedical Sciences

Moodle Screenshots

16 UE 6.25 Signalisation cellulaire

 [Supports de Cours](#)

 [sondage équipement mobile Wi-Fi](#)

 [Enquête sur le cours en anglais](#)

Les questions vont apparaître ci-dessous

 [Question 1](#)

 [Question 2](#)

 [Question 3](#)

 [Question 4](#)

 [Question 4 après débat](#)

 [Question 5](#)

 [Question 5 après débat](#)

Votre feedback :

 [Votre retour sur l'activité de questions interactives en TD](#)

Question 1

*1

Sélectionner la ou les réponses vraies (pour la condition NT)

- ☐ A. L'oxystérol augmente l'activité du promoteur tandis que la Dex n'a pas d'effet
- ☐ B. L'oxystérol et la Dex modifient l'activité du promoteur
- ☐ C. La Dex n'a pas d'effet sur l'activité du promoteur stimulée par l'oxystérol
- ☐ D. La Dex a un effet synergique sur l'activité du promoteur stimulée par l'oxystérol

Envoyer le questionnaire

1. Sélectionner la ou les réponses vraies (pour la condition NT)

Réponse	Moyenne	Total
A. L'oxystérol augmente l'activité du promoteur tandis que la Dex n'a pas d'effet	<div><div></div></div> 20%	13
B. L'oxystérol et la Dex modifient l'activité du promoteur	<div><div></div></div> 56%	37
C. La Dex n'a pas d'effet sur l'activité du promoteur stimulée par l'oxystérol	<div><div></div></div> 14%	9
D. La Dex a un effet synergique sur l'activité du promoteur stimulée par l'oxystérol	<div><div></div></div> 11%	7

Theater and Classroom



Credit : T Koscielniak



Credit : T Koscielniak

The Moodle Remote Control

[Voir](#)[Vos réponses : voir 1](#)[Toutes les réponses \(6\)](#)[Réglages avancés](#)[Questions](#)[Prévisualisation](#)

Q1

URL pour BYOD : <http://moodle-admin-qualif.parisdescartes.fr/BYOD/?sectionid=2734>

*1

Parmi ces légumes, lesquels sont des fruits

☐ Pomme de terre

☐ Carotte

☐ Tomate

☐ Potiron

☐ Choux fleur

☐ Courgette

The Moodle Remote Control

Zapette

Questions en mode BYOD

6 participants

Question N°1

👁 Rendre visible

Question N°2

👁 Rendre visible

Question N°3

👁 Rendre visible

Question N°4

👁 Rendre visible

Question N°5

👁 Rendre visible

Zapette

Questions en mode BYOD

6 participants

Question N°1(6)

🔒 Cacher

🗨 Réponses

Question N°2

👁 Rendre visible

Question N°3

👁 Rendre visible

Question N°4

👁 Rendre visible

Question N°5

👁 Rendre visible

Zapette

Questions en mode BYOD

6 participants

Question N°1(6)

🔒 Cacher

🗨 Réponses

Question N°2(3)

🔒 Cacher

🗨 Réponses

Question N°3(2)

🔒 Cacher

🗨 Réponses

Question N°4(3)

🔒 Cacher

🗨 Réponses

Question N°5(0)

🔒 Cacher

🗨 Réponses

Credit : Service Pédagogie numérique – Digital Pedagogy – Paris Descartes University

The Moodle Remote Control

Zapette

Questions en mode BYOD

6 participants

Question N°1

Réponses reçues : 6

Parmi ces légumes, lesquels sont des fruits

	Réponses	%
Pomme de terre	0	0%
Carotte	0	0%
Tomate	6	100%
Potiron	4	66.7%
Choux fleur	0	0%
Courgette	4	66.7%

[retour](#)

A new
development:
the student's
remote control
A virtual voting
device

Credit : Service TICE – Paris Descartes University

BYOD is widespreading

BYOD for increasing motivation and attention

- College of Biomedical Sciences
- College of Medicine
- College of Law
- College of Pharmacy
- College of Mathematical Engineering
- College of Humanities



A team work

Xavier Coumoul: Professor, Biomedical Sciences

Sonia Badeau-Mahmoud

Ludivine Alvarez

Antoinette Bouziane

Jennifer Carmichael

Marion Harent

Frédéric Romero: Pedagogical Engineers

Bruno Bouret

Yann Sallou: Moodle Remote Control Developpers



The pedagogical team



http://upload.wikimedia.org/wikipedia/commons/a/a9/Television_crew_shooting_a_movie_during_turtle_nest_excavation_and_relocation.jpg
Par Maxfield Barbara, U.S. Fish and Wildlife Service [Public domain], via Wikimedia Commons

Teaching with digital tools is like making a movie: you need a technical team.

Let's keep in touch

thierry.koscielniak@parisdescartes.fr

 @tkoscielniak

Profile at Paris Descartes Academic Social Network (French):

<http://carnets.parisdescartes.fr/koscieln>

Profile at EDUCAUSE (English):

<http://www.educause.edu/members/thierry-koscielniak>



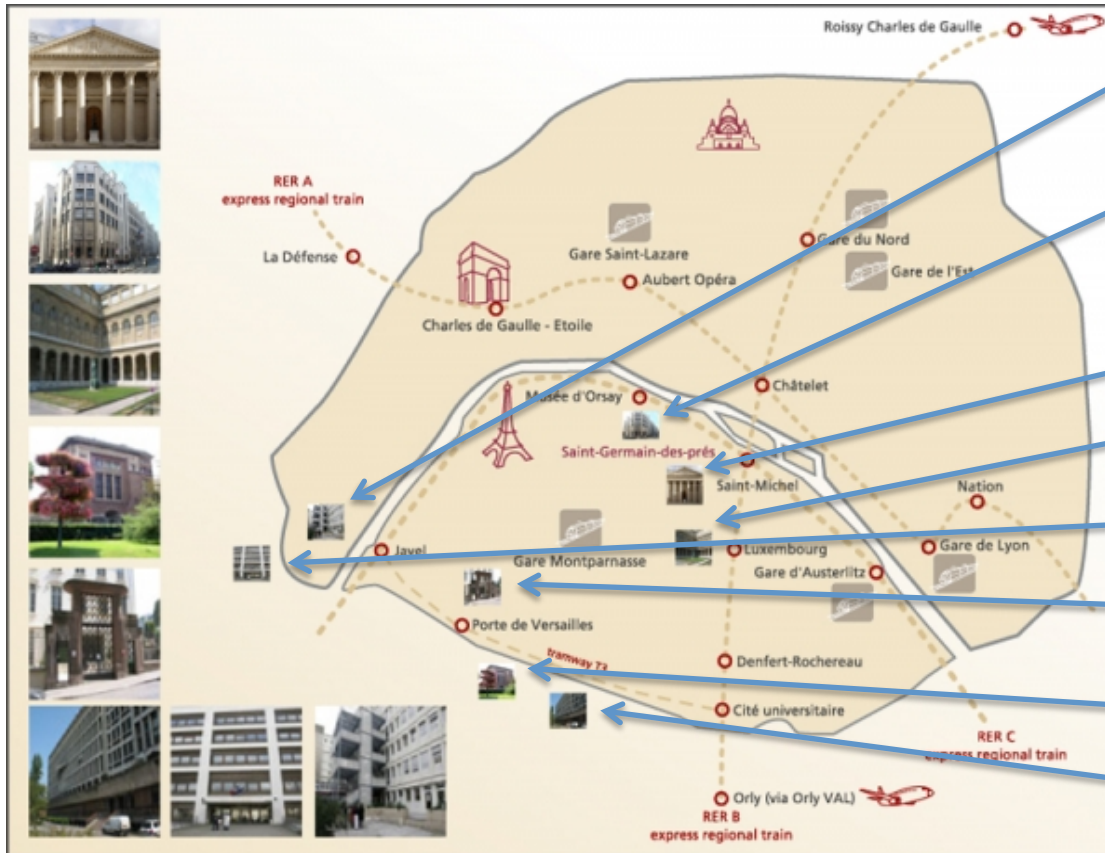
Paris Descartes University key figures



Credit : Paris Descartes University

- Multidisciplinary university
 - Spread over 9 colleges and 1 institute of technology
- 38,000 students
 - 200 PhD granted each year
- 4,000 members
 - Faculties, researchers, staff
- 1,300 researchers
 - 82 research labs

Paris Descartes University locations



Institute of Technology

Biomedecine
Maths & Computer Sci.
Human & Social Sciences

Headquarters + Medecine

Pharmacy

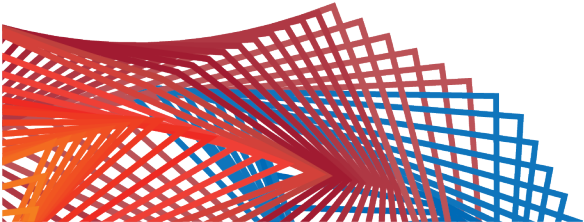
Psychology

Sports

Odontology

Law – Economics

Credit : Paris Descartes University





[View publication stats](#)

