



**HAL**  
open science

## **Tetraploid citrus seedlings subjected to long-term nutrient deficiency are less affected at the ultrastructural, physiological and biochemical levels than diploid ones**

Julie Oustric, Yann Quilichini, Raphaël Morillon, Stéphane Herbette, Luro François, Jean Giannettini, Liliane Berti, Jérémie Santini

### **► To cite this version:**

Julie Oustric, Yann Quilichini, Raphaël Morillon, Stéphane Herbette, Luro François, et al.. Tetraploid citrus seedlings subjected to long-term nutrient deficiency are less affected at the ultrastructural, physiological and biochemical levels than diploid ones. *Plant Physiology and Biochemistry*, 2019, 135, pp.372-384. 10.1016/j.plaphy.2018.12.020 . hal-02187423

**HAL Id: hal-02187423**

**<https://hal.science/hal-02187423>**

Submitted on 26 May 2020

**HAL** is a multi-disciplinary open access archive for the deposit and dissemination of scientific research documents, whether they are published or not. The documents may come from teaching and research institutions in France or abroad, or from public or private research centers.

L'archive ouverte pluridisciplinaire **HAL**, est destinée au dépôt et à la diffusion de documents scientifiques de niveau recherche, publiés ou non, émanant des établissements d'enseignement et de recherche français ou étrangers, des laboratoires publics ou privés.

**Tetraploid citrus seedlings subjected to long-term nutrient deficiency are less affected at the ultrastructural, physiological and biochemical levels than diploid ones**

Julie Oustric<sup>a</sup>, Yann Quilichini<sup>b</sup>, Raphaël Morillon<sup>c</sup>, Stéphane Herbette<sup>d</sup>, François Luro<sup>e</sup>, Jean Giannettini<sup>f</sup>, Liliane Berti<sup>g</sup>, Jérémie Santini<sup>h\*</sup>

J. Oustric, J. Giannettini, L. Berti, J. Santini

Laboratoire Biochimie et Biologie Moléculaire du Végétal, CNRS, UMR 6134 SPE, Université de Corse, Corte, France

<sup>a</sup>Tel: +33 (0)495450616; fax: +33 (0)495450154; e-mail: oustric-filippi\_j@univ-corse.fr

<sup>f</sup>Tel: +33 (0)495450674; fax: +33 (0)495450154; e-mail: gianetti@univ-corse.fr

<sup>g</sup>Tel: +33 (0)495 45 02 21; fax: +33 (0)495450154; e-mail: berti@univ-corse.fr

<sup>h\*</sup>Corresponding author Tel: +33 (0)495450115; fax: +33 (0)495450154; e-mail: jeremie.santini@univ-corse.fr

Yann Quilichini

Laboratoire Parasites et Ecosystèmes Méditerranéens", CNRS, UMR 6134 SPE, Université de Corse, Corte, France

<sup>b</sup>Tel: +33 (0)495450006; fax: +33 (0)495450045.

R. Morillon

Equipe "Amélioration des Plantes à Multiplication Végétative", UMR AGAP, Département BIOS, CIRAD, Station de Roujol, Petit-Bourg, Guadeloupe

<sup>c</sup>Tel: +590 (590)948891; fax: +590 (590)948899; e-mail: raphael.morillon@cirad.fr

S. Herbette

UCA, INRA, PIAF, Clermont-Ferrand, France

<sup>d</sup>Tel: +33(0)473407928; fax: +33 (0)473407916

F. Luro

UMR AGAP Corse, station INRA/CIRAD, San Giuliano, France

<sup>e</sup>Tel: +33 (0)495595946; fax: +33 (0)495595937; e-mail: luro@corse.inra.fr

**Disclosures:** The authors have no conflicts of interest to declare

## 1 Abstract

2 Nutrient deficiency has economic and ecological repercussions for citrus fruit crops worldwide.  
3 Citrus crops rely on fertilization to maintain good fruit output and quality, whereas new crop  
4 management policy aims to reduce fertilizers input. New rootstocks are needed to meet to this  
5 constraint, and the use of new tetraploid rootstocks better adapted to lower nutrient intake could  
6 offer a promising way forward. Here we compared physiological, biochemical and anatomic  
7 traits of leaves in diploid (2x) and doubled-diploid (4x) Citrumelo 4475 (*Citrus paradisi* L.  
8 Macf. × *Poncirus trifoliata* L. Raf.) and Volkamer lemon (*Citrus limonia* Osb.) seedlings over  
9 7 months of nutrient deficiency. Photosynthetic parameters ( $P_{net}$ ,  $G_s$  and  $F_v/F_m$ ) decreased, but  
10 to a lesser extent in 4x genotypes than 2x. Degradation of the ultrastructural organelles  
11 (chloroplasts and mitochondria) and compound cells (thylakoids and starches) was also lower  
12 in 4x genotypes, suggesting that tetraploidy may enhance tolerance to nutrient deficiency.  
13 However, leaf surface (stomata, stomatal density and epithelial cells) showed no nutrient  
14 deficiency-induced change. In 4x Citrumelo 4475, the higher tolerance to nutrient deficiency  
15 was associated with a lower MDA and  $H_2O_2$  accumulation than in the 2x, suggesting a more  
16 efficient antioxidant system in the 4x genotype. However, few differences in antioxidant system  
17 and oxidative status were observed between 2x and 4x Volkamer lemons.

18  
19 **Keywords** Citrus, Nutrient deficiency, Oxidative stress, Photosynthesis, Polyploidy,  
20 Ultrastructure

21  
22 **Abbreviations** 2x: diploid; 4x: doubled-diploid; APX: ascorbate peroxidase; CAT: catalase; CM2x: diploid  
23 Citrumelo 4475; CM4x: doubled-diploid Citrumelo 4475;  $F_0$ : minimal chlorophyll a fluorescence;  $F_m$ : maximal  
24 fluorescence;  $F_v$ : variable fluorescence;  $F_v/F_m$ : maximum quantum efficiency of PSII;  $G_s$ : stomatal conductance;  
25 MDA: malondialdehyde;  $P_{net}$ : Leaf net photosynthetic rate; ROS: reactive oxygen species; SOD: superoxide  
26 dismutase; VK2x: diploid Volkameriana; VK4x: doubled-diploid Volkameriana.

## 1. Introduction

Ploidy is a common feature and a major facilitator of adaptive evolution in plants (Wendel 2000; Chen, 2007). It arises spontaneously from unreduced gametes or duplicated chromosomes. Two types of ploidy are generally recognized: autopolyploidy, which is considered extremely rare in nature (Stebbins 1950; Grant, 1981), and allopolyploidy. Autopolyploid genomes are composed of identical sets of chromosomes, while allotetraploid genomes are formed through interspecific hybridization (Soltis and Soltis, 2009). Genome variations in ploidy have induced changes in anatomical and morphological characteristics, physiological functions and gene expression (Leitch and Leitch, 2008). Polyploid plants frequently occur in adverse environmental conditions, like high altitude with high radiation, more polar latitude, deserts, and nutrient-poor soil (Ehrendorfer et al., 1980; Thompson and Lumaret, 1992; Soltis and Soltis 2000). Their potential to improve tolerance has prompted a number of investigations into diploids (2x) and doubled-diploid (4x) genotypes under several environmentally stressful conditions, and some studies have found a tolerance improvement in 4x under heat, drought and salt stress than in their related 2x (Saleh et al., 2008; Li et al., 2009; Zhang et al., 2010).

A common consequence of environmental stresses is the overproduction of free radicals and other reactive oxygen species (ROS) that can deteriorate the ultrastructure of plant components (e.g. photosynthetic pigments) and cell membranes (Foyer et al. 1994, Taylor and Craig 1971). The major sources of ROS in plants cells are chloroplasts, mitochondria and peroxisomes. Plants possess two antioxidant systems—one enzymatic (mainly superoxide dismutase (SOD), ascorbate peroxidase (APX), catalase (CAT) and dehydroascorbate reductase (DHAR)), the other non-enzymatic (mainly ascorbate, glutathione and proline). However, stress response may change depending on genotype, intensity of stress, and ploidy level (Santini et al., 2013; Liu et al., 2011).

Nutrient deficiency is one of the major environmental factors that severely limit crop development and production worldwide (Foyer et al., 1997). Essential nutrients are mainly N, P and K, which have a direct impact on plant growth. A deficiency in these elements would disturb the vegetative or reproductive lifecycle of the plant. Mineral-deficient plants consequently show various visual symptoms, such as necrosis, chlorosis, dark green foliage, or stunted growth (Ericsson, 1995). These minerals have various functions: (i) as essential

1 metabolites (e.g. proteins, enzymes and coenzymes, cell walls and chlorophyll), (ii) as enzyme  
2 activators or regulators of enzyme-associated processes, and (iii) as non-structural factors in  
3 physiological processes (i.e. membrane integrity, photosynthesis, stomatal movement and  
4 environmental signalling) (Lal, 2006). Deficiency in one or more mineral elements causes a  
5 degradation of the chloroplasts and thus disruption of their photosynthetic capacity (Kalaji et  
6 al., 2014).

7 The citrus industry has long used rootstocks to enhance tolerance to biotic and abiotic  
8 stresses and to improve fruit output and quality. The majority of the rootstocks used are 2x,  
9 with  $2n = 2x = 18$  chromosomes (Krug, 1943). However, 4x resulting from incomplete mitosis  
10 of somatic embryos frequently occur in seedlings of 2x apomictic genotypes (Cameron and  
11 Frost, 1968). Tetraploid citrus are characterized by various phenotypic traits including greater  
12 flower number, greener (high chlorophyll production), thicker and larger leaves and fruits, and  
13 reduced growth compared to the related 2x (Stebbins, 1950; Ollitrault and Jacquemond, 1994;  
14 Romero-Aranda et al., 1997). Leaves of 4x generally have larger cells, guard cells, stomata and  
15 chlorophyll, and a higher number of chloroplasts (Beck et al., 2003; Jellings and Leech, 1984;  
16 Zhang et al., 2010). The greater genetic variability of 4x could be used in citrus to improve  
17 abiotic stress tolerance (Allario et al., 2013; Oustric et al., 2017; Balal et al., 2017).

18 Fertilization is a big economic and ecological issue in the citrus industry, making it  
19 essential to better understand plant responses to nutrient deficiency and urgent to develop new  
20 rootstocks that require less fertilizer. New tetraploid rootstocks offer a promising way forward  
21 to lower use of fertilizers.

22 Here we compared the impact of nutrient deficiency in two rootstock genotypes that are  
23 used worldwide, i.e. Citrumelo 4475 (*Citrus paradisi* L. Macf.  $\times$  *Poncirus trifoliata* L. Raf.  
24 (CM2x)) and Volkamer lemon (*Citrus limonia* Osb. (VK2x)), in both 2x and their respective  
25 4x types (CM4x and VK4x, respectively).

26 The objective of this study was to differentiate these 4 genotypes by investigating the  
27 impact of nutrient deficiency on leaf structure and ultrastructure associated with physiological  
28 and biochemical parameters. Increased tolerance to nutritional stress in 4x (lower structure and  
29 ultrastructure damage associated with higher photosynthetic capacities and more efficient  
30 antioxidant system) would confirm the value of using polyploids when exposed to  
31 environmentally harsh conditions.

32

1  
2  
3  
4  
5  
6  
7  
8  
9  
10  
11  
12  
13  
14  
15  
16  
17  
18  
19  
20  
21  
22  
23  
24  
25  
26  
27  
28  
29  
30

## 2. Materials and Methods

### 2.1. Plant material and experimental design

Plants of 2x Citrumelo 4475 (CM2x) and Volkamer lemon (VK2x) genotypes and their related doubled-diploids (CM4x and VK4x, respectively) were grown from seedling stages (8 weeks old). Seedlings of each genotype were selected after checking their ploidy status by flow cytometry (Partec I, Germany) according to Froelicher et al. (2007). Clonal propagation by nucellar embryogenesis was checked by genotyping with SSR markers as described in Vieira et al. (2016).

The 6 seedlings of each genotype, giving a total of 24 plants, were grown under identical conditions in vermiculite with ferti-irrigation and water (1L/h) during 4 years in a tunnel greenhouse at the AREFLEC experimental station in San Giuliano, Corsica (41°47'27''N and 09°23'40''E). The ferti-irrigation solutions were prepared and applied with a metering pump. The stock solution used for irrigation included: N (nitrogen), P (phosphorus) and K (potassium) (20-5-10 fertilizer unit) + 2MgO (magnesium oxide) + trace elements. The fertilization rate supplied was in accordance with the French department of agriculture recommendations.

After 4 years and before starting the experiment, the vermiculite was washed with distilled water for 48 hours in order to eliminate any nutritional reserves in the pot. The 4-years-old trees were then divided into 2 blocks: one with reference ferti-irrigation (control plants) and the other with irrigation water (without nutrient inputs). In each block, a total of 3 trees of each genotype was randomized, giving a total of 12 trees per block.

Experiments were carried out in December 2016 after 210 days of nutrient deficiency. Measurements and sampling were performed on homogeneous plants composed of 4 branches with fully-expanded leaves. For physiological measurements, 9 fully expanded leaves were analyzed, i.e. 3 per tree (9 replicates), between 7 AM and 11 AM. For biochemical analyses, 3 samples were collected for each genotype, i.e. 1 per tree, and each sample is obtained by pooling 8 fully-expanded leaves. All leaves were immediately frozen in liquid nitrogen and stored at -80°C, and each leaf sample was ground to a fine powder prior performing biochemical analyses. For the mineral measurements, 3 samples were collected for each genotype, i.e. one per tree, and each sample is obtained by pooling 8 fully-expanded leaves (3 replicates).

1 At the same time of measurements and sampling, five 1 cm<sup>2</sup> pieces for scanning electron  
2 microscopy and five 1–2 mm<sup>2</sup> pieces for transmission electron microscopy were cut with a razor  
3 blade from mid-laminar areas of both sets of leaves (5 replicates for each genotype).

#### 4 5 *2.2. Measurements of gas exchange*

6 Leaf net photosynthetic rate ( $P_{\text{net}}$ ) and stomatal conductance ( $G_s$ ) were measured using  
7 a LI-6400 portable photosynthesis system (Li-COR, Lincoln, NE, USA) with the LI6400-40  
8 Leaf Chamber. This experiment was conducted at photosynthetic photon flux density (PPFD)  
9 of 1400  $\mu\text{mol photon}\cdot\text{m}^{-2}\cdot\text{s}^{-1}$  with a Li-COR red-blue light source (6400-02B no. SI-710, Li-  
10 Cor, Lincoln, NE), a constant carbon dioxide concentration ( $\text{CO}_2$ ) of 380  $\mu\text{mol}\cdot\text{mol}^{-1}$ , air flow  
11 rate of 500  $\mu\text{mol}\cdot\text{s}^{-1}$ , and leaf temperature of 25°C.

#### 12 13 *2.3. Measurements of chlorophyll a fluorescence*

14 Chlorophyll *a* fluorescence of dark-acclimated leaves was measured using a Handy-  
15 PEA portable fluorometer (Hansatech Instruments, Ltd, Norfolk, UK). Leaves were firstly dark-  
16 acclimated with a “leafclip” for 30 min. Then, leaves were illuminated with a light intensity of  
17 3000  $\mu\text{mol photon}\cdot\text{m}^{-2}\cdot\text{s}^{-1}$ , by an array of three light-emitting diodes (650 nm) for a duration of  
18 1 s. Among the measured parameters,  $F_0$  represents the minimal values of chlorophyll *a*  
19 fluorescence,  $F_m$  represents the maximum fluorescence, and  $F_v$  is variable fluorescence, which  
20 is obtained by subtracting  $F_0$  from  $F_m$ . The  $F_v/F_m$  ratio corresponds to the maximum quantum  
21 efficiency of photosystem II (PSII) (Maxwell and Johnson, 2000).

#### 22 23 *2.4. Foliar mineral analysis*

24 All ground samples were dried at  $65 \pm 10^\circ \text{C}$  in an oven overnight, transferred into a  
25 desiccator until cooling and sent to a CIRAD laboratory (Montpellier, France) for analysis of  
26 macro- and micro-nutrients.

27 Total P, K, Ca, Mg, Na, B, Cu, Fe, Zn and Mn in leaves were determined using an  
28 Agilent 720 simultaneous ICP-OES after double calcination including silica removal by adding  
29 hydrofluoric acid.

30 N content in leaves was measured by combustion using a Leco TruMac N determinator.

#### 31 32 *2.5. Scanning electron microscopy (SEM)*

1 Leaf pieces (typically 1 cm<sup>2</sup>) were cut with a razor blade from mid-laminar areas of  
2 leaves and fixed in cold (4°C) 2.5% glutaraldehyde in 0.1 M sodium cacodylate buffer at pH  
3 7.2, rinsed in a 0.1 M cacodylate buffer at pH 7.2, dehydrated through a graded ethanol series  
4 (30%, 50%, 75%, 90% and 100%), and dried with CO<sub>2</sub> in an Emitech K850 critical point dryer  
5 (Quorum Technologies Ltd, Ashford, U.K.). Specimens were mounted on aluminum stubs with  
6 carbon double-sided adhesive disks, coated with gold/palladium in a SC7640 sputter coater  
7 (Quorum Technologies Ltd, Newhaven, U.K.), and examined under a S-3400N scanning  
8 electron microscope (Hitachi High-Technologies Corporation, Tokyo, Japan) at an accelerating  
9 voltage of 5 at the University of Corsica (Corte, France). SEM measurements were realized  
10 using the software of the microscope. 30 independent measurements on 5 different leaves of  
11 each variety and each genotype were realized in order to estimate length and width of stomata  
12 and ostioles. 5 independent measurements on 5 different leaves of each variety and each  
13 genotype were analyzed using Adobe Photoshop software in order to estimate the stomata  
14 density. The number of stomata was counted on photographs and taken into account the stomata  
15 cut only on two sides of the photograph.

#### 17 *2.6. Transmission electron microscopy (TEM)*

18 Leaf pieces (typically 1 mm<sup>2</sup>) were cut with a razor blade from mid-laminar areas of  
19 leaves and fixed in cold (4°C) 2.5% glutaraldehyde in 0.1 M sodium cacodylate buffer at pH  
20 7.2, rinsed in a 0.1 M cacodylate buffer at pH 7.2, post-fixed in cold (4°C) 1% osmium tetroxide  
21 in the same buffer for 1 h, dehydrated through a graded ethanol series (70% and 100%) and  
22 propylene oxide, embedded in Spurr, and polymerized at 60°C for 24 h. Ultra-thin sections (60–  
23 90 nm) were cut using an Power tome PC ultramicrotome (RMC Boeckeler, Tuscon, U.S.A.).  
24 The sections were placed on 200- and 300-mesh copper grids and stained with UranylLess  
25 (Delta Microscopies, France) and lead citrate. Sections were examined on a Hitachi H-7650  
26 (Hitachi High-Technologies Corporation, Tokyo, Japan) at an accelerating voltage of 80 kV at  
27 the University of Corsica (Corte, France). TEM measurements were realized using the software  
28 of the microscope. 10 cells of each variety, each genotype and each mesophyll type were  
29 analysed in order to estimate length, width and thickness of cells and length, width and number  
30 of chloroplasts, starches, plastoglobuli and mitochondria. 30 independent measurements of  
31 each variety, each genotype and each mesophyll type were analysed in order to estimate length



1 and width of chloroplasts, starches, plastoglobuli, mitochondria, grana, number of grana per  
2 cell section, and number of thylakoids per granum.

### 3 4 2.7. Assay of oxidation markers

5 Malondialdehyde (MDA) and hydrogen peroxide (H<sub>2</sub>O<sub>2</sub>) contents and antioxidant  
6 enzyme activities (superoxide dismutase, catalase and ascorbate peroxidase) were determined  
7 using the method described by Santini et al. (2013). A V-630 spectrophotometer (Jasco Inc.,  
8 Tokyo, Japan) was used to measure the absorption spectra of the samples.

### 9 10 2.8. Statistical analyses

11 The experimental was set up as a split-plot design with genotype as main plot and ploidy  
12 and treatment as subplot. R statistical software (<http://www.R-project.org>) was used to analyze  
13 all the data. Multi-way ANOVA followed by least significant difference (LSD) test at  $P < 0.05$   
14 was used for evaluating the influence of genotypes, ploidy and treatments. Heat map was made  
15 to determine the differences between genotypes and treatments for abaxial epidermis and  
16 ultrastructural palisadic and spongy mesophyll characters.

## 17 18 3. Results and Discussion

### 19 3.1. Anatomical properties of doubled-diploid versus diploid genotypes under control 20 conditions

21 Regardless of seedling genotype and ploidy level, stomata were observed only on leaf  
22 abaxial surface and were surrounded by ordinary epidermal cells (anomocytic organization).  
23 The epidermal carpet architecture showed no appendages (trichome) (Fig. 1). Similar results  
24 were found by Inyama et al. (2015) in other *Citrus* species. In agreement with other studies,  
25 stomatal density was lower in 4x genotypes than in their related 2x, and correlated with an  
26 increase in size (Fig. 1; Table 1; Sup. Table 1) (Aryavand et al., 2003; Li et al., 2009; Allario  
27 et al., 2011; Meng et al., 2014). At ultrastructure level, whether in the palisade or spongy  
28 mesophylls, cells were larger with a thicker wall in 4x genotypes than in their related 2x (Fig.  
29 2 and 3; Tables 2 and 3; Sup. Tables 2 and 3), as reported in Romero-Aranda et al. (1997).

30 Doubled-diploid genotypes had more chloroplasts but their size remained broadly  
31 similar to their 2x counterparts (Fig. 2 and 3; Tables 2 and 3; Sup. Tables 2 and 3), in line with  
32 previous reports (Jellings and Leech, 1984; Mathura et al., 2006). Conversely, ploidy level did

1 not influence number and size of starches and plastoglobuli or number of grana per chloroplasts,  
2 which were approximately identical between the different ploidy levels and whatever the  
3 parenchyma (Fig. 2 and 3; Tables 2 and 3; Sup. Tables 2 and 3). This result was also observed  
4 in 4x black locust (*Robinia pseudoacacia* L.) (Meng et al., 2014).

### 6 3.2. Impact of tetraploidization on photosynthetic properties under nutrient deficiency

7 Deficiency of one or more essential minerals is known to affect the photosynthetic  
8 process (Lima et al., 1999; Huang et al., 2004; Boussadia et al., 2010). The decrease in  $P_{net}$  was  
9 associated with a decrease in  $G_s$  in all genotypes (Fig. 4A and B; Sup. Table 4), suggesting a  
10 stomatal limitation (Zhao et al., 2005) that would lead to down-regulation of the  $CO_2$   
11 accumulation (Flexas et al., 2013).

12  $P_{net}$  was higher in 4x honeysuckle (*Lonicera japonica* Thunb.) (Li et al., 2009), spathe  
13 flower (*Spathiphyllum wallisii*) (Van Laere et al., 2011) and in Carrizo citrange citrus seedlings  
14 (*Citrus sinensis* (L.) Osbeck  $\times$  *Poncirus trifoliata* (L.) Raf) (Oliveira et al., 2017) than their 2x  
15 counterparts under drought stress, due to higher maintained degree of stomatal opening.  
16 However, nutrient deficiency caused less pronounced inhibition of photosynthesis in 4x  
17 seedlings than in related 2x (Fig. 4C; Sup. Table 4) possibly due to an upregulation of non-  
18 stomatal factors (biochemical) (Klamkowski and Treder, 2008; Shahid et al., 2011) or a  
19 decrease in protective non-radiative energy dissipation, photodamage of the PSII centers, or  
20 both (Osmond, 1994). Photoinhibitory impacts on PSII occurred proportionally more in 2x  
21 honeysuckle (*Lonicera japonica* Thunb.) under salt stress (Yan et al., 2015) and heat stress (Li  
22 et al., 2011) than in 4x counterparts. The lower decrease of photosynthetic rate in 4x genotypes  
23 under nutrient deficiency could be due to ultrastructural changes in leaves (Parisod et al., 2010;  
24 Xiong et al., 2006).

### 26 3.3. The higher photosynthetic rates of doubled-diploid genotypes under nutrient stress 27 could be explained by their leaf and cell anatomy.

28 In each genotype, nutrient deficiency decreased the total content of all minerals except  
29 for K (Fig. 6) and was associated with leaf alteration (Fig.5). Despite a similar decrease in  
30 minerals content (Fig. 6), leaves in 2x genotypes had a greater proportion of chlorotic leaves  
31 than in their related 4x (Fig. 5), suggesting a substantial loss of chlorophyll pigments (Zhang et  
32 al., 2016). However, taking in account the long-term nutrient deficiency, there was no large

1 change in stomata size and density in either 2x or 4x genotypes (Fig. 1; Table 1; Sup. Table 1),  
2 suggesting that stomata do not play a major role in response to nutritional stress.

3 Furthermore, all genotypes presented ultrastructural damages (chloroplasts, starches,  
4 mitochondria and plastoglobuli) under nutrient deficiency. In spongy and palisadic mesophyll  
5 cells, number of chloroplasts and mitochondria decreased and granal thylakoids were distorted  
6 in all genotypes (Fig. 2 and 3; Tables 2 and 3; Sup. Tables 2 and 3). Doubled-diploid genotypes  
7 were less impacted by these changes than their related 2x. Loss of chloroplast integrity and  
8 functioning (photosynthesis, potential quantum yield of photosystem II) would be characteristic  
9 of senescence. Chloroplast degradation plays an important role in leaf senescence for nutrient  
10 recycling from reproductive organs or younger leaves (Makino and Osmond, 1991;  
11 Hortensteiner and Feller, 2002). Moreover, thylakoid membranes and their associated PSII are  
12 considered as targets of abiotic stress (Ding et al., 2005).

13 The lower deterioration of thylakoids in 4x genotypes could explain their better  $F_v/F_m$   
14 ratio and, in turn, the higher photosynthetic activity maintained in 4x genotypes than their  
15 respective 2x (Fig. 4C; Sup. Table 4). Interestingly, lower chloroplast damage associated with  
16 higher photosynthetic activity was also observed in 4x black locust (*Robinia pseudoacacia* L.)  
17 under salt stress (Wang et al., 2013) than in their related 2x.

18 Plastoglobuli containing products of membrane degradation showed an abnormal  
19 increase in size (spongy and palisadic mesophyll cells) in all genotypes except VK4x (Fig. 2  
20 and 3; Tables 2 and 3; Sup. Tables 2 and 3), which may indicate a link between chloroplast  
21 disorganization and plastoglobuli (Dou et al., 1999). In the chloroplast stroma, nutrient  
22 deficiency led to a decrease in the number as well as the length and width of starch granules in  
23 both spongy and palisadic mesophyll cells in all genotypes except VK4x (Fig. 2 and 3; Tables  
24 2 and 3; Sup. Tables 2 and 3). VK4x showed an increase in starch length and width (Fig. 2 and  
25 3; Tables 2 and 3; Sup. Tables 2 and 3), as reported in other studies under nutrient deficiency  
26 (Bondada and Syvertsen 2003; Zhao et al, 2015). The swelling of starch granules could be  
27 induced by an up-regulation of transcripts encoding key enzymes involved in starch  
28 biosynthesis and a down-regulation of transcripts encoding enzymes involved in starch  
29 consumption (Tao et al., 2013). In CM4x, VK2x and CM2x, the decline in length and width of  
30 transitory starch (Fig. 2 and 3; Tables 2 and 3; Sup. Tables 2 and 3) would suggest a high  
31 mobilization and translocation of starch leading, in turn, to a more advanced senescence process  
32 than in VK4x (Lindroth et al., 2002). In leaves, stimulation of the degradation of starch granules

1 would supply the carbon and energy needed for the stress response, especially when  
2 photosynthesis becomes too weak, and protect cellular structures by increasing soluble sugars  
3 as osmoprotectants (Kaplan and Guy, 2004; Rizhsky et al., 2004; Naeem et al., 2012).

#### 4 5 3.4. The greater tolerance to nutrient stress of 4x genotypes is associated with better 6 redox status

7 Mesenchymal cells, especially chloroplasts, endure ultrastructure damage from abiotic  
8 stresses such as salinity (Hernandez et al., 1995; Fidalgo et al., 2004), drought and heat  
9 (Grigorova et al., 2011), chilling stress (Kratsh and Wise, 2000), nutrient excess (Papadakis et  
10 al., 2004) and nutrient deficiency (Bondada and Syvertsen, 2003; Papadakis et al., 2007).  
11 Reduction of chloroplast numbers leads to a decrease in photosynthetic activity under nutrient  
12 deficiency. This decrease is probably due to oxidative stress, i.e. an imbalance between ROS  
13 accumulation and antioxidant system capacity (Djanaguiraman and Prasad, 2010). Previous  
14 studies have reported that nutrient deficiency enhances oxidative metabolism (Cakmak, 1994;  
15 Tewari et al., 2006). Here, SOD and APX activities differed between genotypes, but CAT  
16 activity decreased with nutrient deficiency in all genotypes (Fig. 7A, B and C; Sup. Table 4).  
17 CAT activity decreases in several species under numerous environmental stresses such as salt  
18 stress (Tanaka et al., 1999), shading stress (Causin et al., 2015) and nutrient deficiency (Huang  
19 et al., 2004; Tewari et al., 2004). The increase in APX only seemed to compensate for the lower  
20 CAT activity in CM4x, which limited accumulation of H<sub>2</sub>O<sub>2</sub> (Fig. 7D; Sup. Table 4). The  
21 increase in MDA content in CM2x and CM4x (Fig. 7E; Sup. Table 4) could result directly from  
22 the transformation of the H<sub>2</sub>O<sub>2</sub> in OH<sup>°</sup> via Fenton or Haber-Weiss reactions, but also from a  
23 direct conversion of O<sub>2</sub> to OH<sup>\*</sup> from an addition of three electrons. The lower MDA and H<sub>2</sub>O<sub>2</sub>  
24 accumulation in CM4x was associated with greater SOD and APX activities. This result could  
25 explain that CM4x had less ultrastructural damage and decreased less in photosynthetic activity  
26 than CM2x. Higher antioxidant capacity was associated to better ultrastructural cell integrity  
27 for better protection under drought stress in a tolerant apple rootstock compared to a sensitive  
28 one (Wang et al., 2012). In agreement with our results, MDA and H<sub>2</sub>O<sub>2</sub> were also less  
29 accumulated in 4x Ignam (*Dioscorea*) under heat stress (Zhang et al., 2010) and in black locust  
30 (*Robinia pseudoacacia* L.) under salt stress (Meng et al., 2012) than in their related 2x.

31 In VK2x and VK4x, the increase in SOD activity and the lower or similar APX and  
32 CAT activities could explain their higher accumulation of H<sub>2</sub>O<sub>2</sub>. These results imply that factors

1 other than redox status could explain the stronger ultrastructural degradations in VK2x than  
2 VK4x, i.e. transcriptional regulations, phytohormones and nutrient signalling (Woo *et al.*, 2013;  
3 Liu *et al.*, 2016).

#### 4 **4. Conclusion**

6 Polyploidization lends citrus genotypes greater tolerance to a prolonged nutrient  
7 deficiency, as indicated by better photosynthetic activity for doubled-diploid genotypes under  
8 stress conditions. This greater tolerance and photosynthetic activity were associated with  
9 limited ultrastructural changes of leaf cells, especially chloroplasts and starch granules, in  
10 doubled-diploid genotypes. These limited structural changes argue for a long-lasting tolerance  
11 of doubled-diploid genotypes under nutrient deficiency, suggesting that these genotypes may  
12 be good candidates for citrus cultivation as part of the effort to reduce fertiliser use. However,  
13 better protection against nutrient deficiency is not still related to a better antioxidant system for  
14 citrus.

15 The next step of this study will be to test these genotypes as rootstocks and to graft them  
16 with an economically productive variety.

#### 18 **Contributions**

19 J. Oustric is a student and main author. She collected test data, performed statistical  
20 analyses, interpreted the results and drafted the manuscript.

21 J. Santini was involved in the write-up, planning and discussion of results.

22 Y. Quilichini performed microscopic analysis.

23 L. Berti helped in paper discussion and was the leader of the team.

24 R. Morillon, S. Herbette, F. Luro and J. Giannettini helped in research trial and to draft  
25 the manuscript.

#### 27 **Acknowledgements**

28 Julie Oustric received grant support from the “Collectivité Territoriale de Corse” (CTC).  
29 This work was funded by the “Collectivité Territoriale de Corse” as part of the research project  
30 “Sélection de porte-greffes pour le développement d’une agrumiculture durable en Corse”. We  
31 thank Jean-Claude Ribaut for hosting this study at the AREFLEC experimental station, and

1 Gilles Paolacci and Paul Martin for installing and monitoring the ferti-irrigation system in the  
2 greenhouse.

### 3 **References**

- 4 Allario, T., Brumos, J., Colmenero-Flores, J.M., Iglesias, D.J., Pina, J.A., Navarro, L., Talon,  
5 M., Ollitrault, P., Morillon, R., 2013. Tetraploid Rangpur lime rootstock increases  
6 drought tolerance via enhanced constitutive root abscisic acid production. *Plant Cell*  
7 *Environ.* 36, 856–868.
- 8 Allario, T., Brumos, J., Colmenero-Flores, J.M., Tadeo, F., Froelicher, Y., Talon, M., Navarro,  
9 L., Ollitrault, P., Morillon, R., 2011. Large changes in anatomy and physiology between  
10 diploid Rangpur lime (*Citrus limonia*) and its autotetraploid are not associated with  
11 large changes in leaf gene expression. *J. Exp. Bot.* 467.
- 12 Aryavand, A., Ehdaie, B., Tran, B., Waines, J.G., 2003. Stomatal frequency and size  
13 differentiate ploidy levels in *Aegilops neglecta*. *Genet. Resour. Crop Evol.* 50, 175–182.
- 14 Balal, R.M., Shahid, M.A., Vincent, C., Zotarelli, L., Liu, G., Mattson, N.S., Rathinasabapathi,  
15 B., Martínez-Nicolas, J.J., Garcia-Sanchez, F., 2017. Kinnow mandarin plants grafted  
16 on tetraploid rootstocks are more tolerant to Cr-toxicity than those grafted on its diploids  
17 one. *Environ. Exp. Bot.* 140, 8–18.
- 18 Beck, S.L., Dunlop, R.W., Fossey, A., Botha, C.E.J., 2003. Evaluation of induced polyploidy  
19 in *Acacia mearnsii* through stomatal counts and guard cell measurements. *S. Afr. J. Bot.*  
20 69, 563–567.
- 21 Bondada, B.R., Syvertsen, J.P., 2003. Leaf chlorophyll, net gas exchange and chloroplast  
22 ultrastructure in citrus leaves of different nitrogen status. *Tree Physiol.* 23, 553–559.
- 23 Boussadia, O., Steppe, K., Zgallai, H., El Hadj, S.B., Braham, M., Lemeur, R., Van Labeke,  
24 M.-C., 2010. Effects of nitrogen deficiency on leaf photosynthesis, carbohydrate status  
25 and biomass production in two olive cultivars ‘Meski’ and ‘Koroneiki’. *Sci. Hortic.* 123,  
26 336–342.
- 27 Cakmak, I., 1994. Activity of ascorbate-dependent H<sub>2</sub>O<sub>2</sub>-scavenging enzymes and leaf  
28 chlorosis are enhanced in magnesium-and potassium-deficient leaves, but not in  
29 phosphorus-deficient leaves. *J. Exp. Bot.* 45, 1259–1266.
- 30 Cameron, J., Frost, H.B., 1968. Genetics, breeding, and nucellar embryony. Reuthen, W.,  
31 Webber H.J., Batchelor, L.D., (eds), *The Citrus Industry*, Vol II. University of  
32 California Press, Berkeley, pp. 325–370.

- 1 Causin, H.F., Marchetti, C.F., Pena, L.B., Gallego, S.M., Barneix, A.J., 2015. Down-regulation  
2 of catalase activity contributes to senescence induction in wheat leaves exposed to  
3 shading stress. *Biol. Plant.* 59, 154–162.
- 4 Chen, Z.J., 2007. Genetic and epigenetic mechanisms for gene expression and phenotypic  
5 variation in plant polyploids. *Annu. Rev. Plant Biol.* 58, 377–406.
- 6 Ding, L., Wang, K.J., Jiang, G.M., Biswas, D.K., Xu, H., Li, L.F., Li, Y.H., 2005. Effects of  
7 nitrogen deficiency on photosynthetic traits of maize hybrids released in different years.  
8 *Ann. Bot.* 96, 925–930.
- 9 Djanaguiraman, M., Prasad, P.V., 2010. Ethylene production under high temperature stress  
10 causes premature leaf senescence in soybean. *Funct. Plant Biol.* 37, 1071–1084.
- 11 Dou, H., Alva, A.K., Bondada, B.R., 1999. Growth and chloroplast ultrastructure of two citrus  
12 rootstock seedlings in response to ammonium and nitrate nutrition. *J. Plant Nut.* 22,  
13 1731–1744.
- 14 Ehrendorfer, F., 1980. Polyploidy and distribution. In: *Polyploidy*. Springer, pp. 45–60.
- 15 Ericsson, T., 1995. Growth and shoot: root ratio of seedlings in relation to nutrient availability.  
16 *Plant Soil* 168, 205–214.
- 17 Fidalgo, F., Santos, A., Santos, I., Salema, R., 2004. Effects of long-term salt stress on  
18 antioxidant defence systems, leaf water relations and chloroplast ultrastructure of potato  
19 plants. *Ann. App. Biol.* 145, 185–192.
- 20 Flexas, J., Niinemets, Ü., Gallé, A., Barbour, M.M., Centritto, M., Diaz-Espejo, A., Douthe, C.,  
21 Galmés, J., Ribas-Carbo, M., Rodriguez, P.L., Rosselló F., Soolanayakanahally R.,  
22 Tomas M., Wright I.J., Farquhar G.D., Medrano H., 2013. Diffusional conductances to  
23 CO<sub>2</sub> as a target for increasing photosynthesis and photosynthetic water-use efficiency.  
24 *Photosyn. Res.* 117, 45–59.
- 25 Foyer, C.H., Lelandais, M., Kunert, K.J., 1994. Photooxidative stress in plants. *Physiol. Plant.*  
26 92, 696–717.
- 27 Foyer, C.H., Lopez-Delgado, H., Dat, J.F., Scott, I.M., 1997. Hydrogen peroxide-and  
28 glutathione-associated mechanisms of acclimatory stress tolerance and signalling.  
29 *Physiol. Plant.* 100, 241–254.
- 30 Froelicher Y., Bassene J.B., Jedidi-Neji E., Dambier D., Morillon R., Bernardini G., Costantino  
31 G., Ollitrault P., 2007. Induced parthenogenesis in mandarin for haploid production:  
32 induction procedures and genetic analysis of plantlets. *Plant Cell Rep.* 26, 937–944.

- 1 Grant, V., 1981. Plant speciation. New York: Columbia University Press xii, 563p.-illus., maps,  
2 chrom. nos. En 2nd edition. Maps, Chromosome numbers. General (KR, 198300748).
- 3 Grigorova, B., Vaseva, I., Demirevska, K., Feller, U., 2011. Combined drought and heat stress  
4 in wheat: changes in some heat shock proteins. Biol. Plant. 55, 105–111.
- 5 Hernandez, J.A., Olmos, E., Corpas, F.J., Sevilla, F., Del Rio, L.A., 1995. Salt-induced  
6 oxidative stress in chloroplasts of pea plants. Plant Sci. 105, 151–167.
- 7 Hortensteiner, S., Feller, U., 2002. Nitrogen metabolism and remobilization during senescence.  
8 J. Exp. Bot. 53, 927–937.
- 9 Huang, Z.-A., Jiang, D.-A., Yang, Y., Sun, J.-W., Jin, S.-H., 2004. Effects of nitrogen  
10 deficiency on gas exchange, chlorophyll fluorescence, and antioxidant enzymes in  
11 leaves of rice plants. Photosynthetica 42, 357–364.
- 12 Inyama, C.N., Osuoha, V.U.N., Mbagwu, F.N., Duru, C.M., 2015. Comparative morphology  
13 of the leaf epidermis in six *Citrus* species and its biosystematic importance. Med.  
14 Aromat. Plants 4, 2167–0412.
- 15 Jellings, A.J., Leech, R.M., 1984. Anatomical variation in first leaves of nine *Triticum*  
16 genotypes, and its relationship to photosynthetic capacity. New Phytol. 96, 371–382.
- 17 Kalaji, H.M., Oukarroum, A., Alexandrov, V., Kouzmanova, M., Brestic, M., Zivcak, M.,  
18 Samborska, I.A., Cetner, M.D., Allakhverdiev, S.I., Goltsev, V., 2014. Identification of  
19 nutrient deficiency in maize and tomato plants by in vivo chlorophyll *a* fluorescence  
20 measurements. Plant Physiol. Biochem. 81, 16–25.
- 21 Kaplan, F., Guy, C.L., 2004.  $\beta$ -Amylase induction and the protective role of maltose during  
22 temperature shock. Plant Physiol. 135, 1674–1684.
- 23 Klamkowski, K., Treder, W., 2008. Response to drought stress of three strawberry cultivars  
24 grown under greenhouse conditions. J. Fruit Ornam. Plant Res. 16, 179–188.
- 25 Kratsch, H.A., Wise, R.R., 2000. The ultrastructure of chilling stress. Plant Cell Environ. 23,  
26 337–350.
- 27 Krug, C.A., 1943. Chromosome numbers in the subfamily *Aurantioideae* with special reference  
28 to the genus *Citrus*. Bot. Gaz. 104, 602–611.
- 29 Lal, R., 2006. Encyclopedia of soil science. CRC Press.
- 30 Leitch, A.R., Leitch, I.J., 2008. Genomic plasticity and the diversity of polyploid plants.  
31 Science 320, 481–483.
- 32 Li, W.-D., Biswas, D.K., Xu, H., Xu, C.-Q., Wang, X.-Z., Liu, J.-K., Jiang, G.-M., 2009.



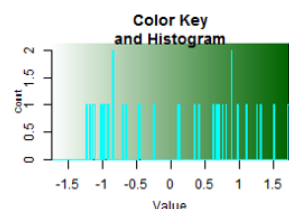
- 1           Photosynthetic responses to chromosome doubling in relation to leaf anatomy in  
2           *Lonicera japonica* subjected to water stress. *Funct. Plant Biol.* 36, 783–792.
- 3   Li, W.D., Hu, X., Liu, J.K., Jiang, G.M., Li, O., Xing, D., 2011. Chromosome doubling can  
4           increase heat tolerance in *Lonicera japonica* as indicated by chlorophyll fluorescence  
5           imaging. *Biol. Plant.* 55, 279–284.
- 6   Lima, J.D., Mosquim, P.R., Matta, F.M.D., 1999. Leaf gas exchange and chlorophyll  
7           fluorescence parameters in *Phaseolus vulgaris* as affected by nitrogen and phosphorus  
8           deficiency. *Photosynthetica* 37, 113–121.
- 9   Lindroth, R.L., Osier, T.L., Barnhill, H.R.H., Wood, S.A., 2002. Effects of genotype and  
10          nutrient availability on phytochemistry of trembling aspen (*Populus tremuloides*  
11          Michx.) during leaf senescence. *Biochem. Syst. Ecol.* 30, 297–307.
- 12   Liu, S., Chen, S., Chen, Y., Guan, Z., Yin, D., Chen, F., 2011. In vitro induced tetraploid of  
13          *Dendranthema nankingense* (Nakai) Tzvel. shows an improved level of abiotic stress  
14          tolerance. *Sci. Hortic.* 127, 411–419.
- 15   Liu, Y., Wang, L., Liu, H., Zhao, R., Liu, B., Fu, Q., Zhang, Y., 2016. The antioxidative defense  
16          system is involved in the premature senescence in transgenic tobacco (*Nicotiana*  
17          *tabacum* NC89). *Biol. Res.* 49, 30.
- 18   Makino, A., Osmond, B., 1991. Effects of nitrogen nutrition on nitrogen partitioning between  
19          chloroplasts and mitochondria in pea and wheat. *Plant Physiol.* 96, 355–362.
- 20   Mathura, S., Fossey, A., Beck, S.L., 2006. Comparative study of chlorophyll content in diploid  
21          and tetraploid black wattle (*Acacia mearnsii*). *Forestry (Lond)* 79, 381–388.
- 22   Maxwell, K., Johnson, G.N., 2000. Chlorophyll fluorescence—a practical guide. *J. Exp. Bot.*  
23          51, 659–668.
- 24   Meng, F., Pang, H., Huang, F., Liu, L., Wang, Y., 2012. Tetraploid black locust (*Robinia*  
25          *pseudoacacia* L.) increased salt tolerance by activation of the antioxidant system.  
26          *Biotechnol. Biotechno. Equip.* 26, 3351–3358.
- 27   Meng, F., Peng, M., Pang, H., Huang, F., 2014. Comparison of photosynthesis and leaf  
28          ultrastructure on two black locust (*Robinia pseudoacacia* L.). *Biochem. Syst. Ecol.* 55,  
29          170–175.
- 30   Naeem, M.S., Warusawitharana, H., Liu, H., Liu, D., Ahmad, R., Waraich, E.A., Xu, L., Zhou,  
31          W., 2012. 5-Aminolevulinic acid alleviates the salinity-induced changes in *Brassica*  
32          *napus* as revealed by the ultrastructural study of chloroplast. *Plant Physiol. Biochem.*

- 1 57, 84–92.
- 2 Oliveira, T.M., Yahmed, J.B., Dutra, J., Maserti, B.E., Talon, M., Navarro, L., Ollitrault, P.,  
3 Gesteira, A. da S., Morillon, R., 2017. Better tolerance to water deficit in doubled  
4 diploid ‘Carrizo citrange’ compared to diploid seedlings is associated with more limited  
5 water consumption. *Acta Physiol. Plant.* 39, 204.
- 6 Ollitrault, P., Jacquemond, C., 1994. Facultative apomixis, spontaneous polyploidization and  
7 inbreeding in *Citrus volkameriana* seedlings. *Fruits* 49, 479–480.
- 8 Osmond, C.B., 1994. What is photoinhibition? Some insights from comparisons of shade and  
9 sun plants. Photoinhibition of photosynthesis from molecular mechanisms to the field.  
10 In: Baker, N.R., Boyer, J.R., (eds), *Photoinhibition of Photosynthesis: From Molecular  
11 Mechanisms to the Field*. Bios Scientific Publishers, Lancaster, pp. 1-24.
- 12 Oustric, J., Morillon, R., Luro, F., Herbette, S., Lourkisti, R., Giannettini, J., Berti, L., Santini,  
13 J., 2017. Tetraploid Carrizo citrange rootstock (*Citrus sinensis* Osb. x *Poncirus  
14 trifoliata* L. Raf.) enhances natural chilling stress tolerance of common clementine  
15 (*Citrus clementina* Hort. ex Tan). *J. Plant Physiol.* 214, 108–115.
- 16 Papadakis, I.E., Dimassi, K.N., Bosabalidis, A.M., Therios, I.N., Patakas, A., Giannakoula, A.,  
17 2004. Effects of B excess on some physiological and anatomical parameters of  
18 ‘Navelina’ orange plants grafted on two rootstocks. *Environ. Exp. Bot.* 51, 247–257.
- 19 Papadakis, I.E., Bosabalidis, A.M., Sotiropoulos, T.E., Therios, I.N., 2007. Leaf anatomy and  
20 chloroplast ultrastructure of Mn-deficient orange plants. *Acta Physiol. Plant.* 29, 297–  
21 301.
- 22 Parisod, C., Holderegger, R., Brochmann, C., 2010. Evolutionary consequences of  
23 autopolyploidy. *New Phytol.* 186, 5–17.
- 24 Rizhsky, L., Liang, H., Shuman, J., Shulaev, V., Davletova, S., Mittler, R., 2004. When defense  
25 pathways collide. The response of *Arabidopsis* to a combination of drought and heat  
26 stress. *Plant Physiol.* 134, 1683–1696.
- 27 Romero-Aranda, R., Bondada, B.R., Syvertsen, J.P., Grosser, J.W., 1997. Leaf characteristics  
28 and net gas exchange of diploid and autotetraploid citrus. *Ann. Bot.* 79, 153–160.
- 29 Saleh, B., Allario, T., Dambier, D., Ollitrault, P., Morillon, R., 2008. Tetraploid citrus  
30 rootstocks are more tolerant to salt stress than diploid. *C. R. Biol.* 331, 703–710.
- 31 Santini, J., Giannettini, J., Pailly, O., Herbette, S., Ollitrault, P., Berti, L., Luro, F., 2013.  
32 Comparison of photosynthesis and antioxidant performance of several *Citrus* and

- 1 *Fortunella* species (*Rutaceae*) under natural chilling stress. *Trees* 27, 71–83.
- 2 Shahid, M.A., Pervez, M.A., Balal, R.M., Ahmad, R., Ayyub, C.M., Abbas, T., Akhtar, N.,  
3 2011. Salt stress effects on some morphological and physiological characteristics of  
4 okra (*Abelmoschus esculentus* L.). *Soil Environ.* 30.
- 5 Soltis, P.S., Soltis, D.E., 2000. The role of genetic and genomic attributes in the success of  
6 polyploids. *Proc. Natl. Acad. Sci.* 97, 7051–7057.
- 7 Soltis, P.S., Soltis, D.E., 2009. The role of hybridization in plant speciation. *Ann. Rev. Plant*  
8 *Biol.* 60, 561–588.
- 9 Stebbins, G. L. (1950). *Variation and evolution in plants*. Oxford University Press, London,  
10 UK.
- 11 Taylor, A.O., Craig, A.S., 1971. Plants under climatic stress II. Low temperature, high light  
12 effects on chloroplast ultrastructure. *Plant Physiol.* 47, 719–725.
- 13 Tanaka, Y., Hibino, T., Hayashi, Y., Tanaka, A., Kishitani, S., Takabe, T., Yokota, S., 1999.  
14 Salt tolerance of transgenic rice overexpressing yeast mitochondrial Mn-SOD in  
15 chloroplasts. *Plant Sci.* 148, 131–138.
- 16 Tao, X., Fang, Y., Xiao, Y., Jin, Y., Ma, X., Zhao, Y., He, K., Zhao, H., Wang, H., 2013.  
17 Comparative transcriptome analysis to investigate the high starch accumulation of  
18 duckweed (*Landoltia punctata*) under nutrient starvation. *Biotechnol. Biofuels* 6, 72.
- 19 Tewari, R.K., Kumar, P., Sharma, P.N., 2006. Magnesium deficiency induced oxidative stress  
20 and antioxidant responses in mulberry plants. *Sci. Hortic.* 108, 7–14.
- 21 Tewari, R.K., Kumar, P., Tewari, N., Srivastava, S., Sharma, P.N., 2004. Macronutrient  
22 deficiencies and differential antioxidant responses—influence on the activity and  
23 expression of superoxide dismutase in maize. *Plant Sci.* 166, 687–694.
- 24 Thompson, J.D., Lumaret, R., 1992. The evolutionary dynamics of polyploid plants: origins,  
25 establishment and persistence. *Trends Ecol. Evol.* 7, 302–307.
- 26 Van Laere, K., França, S.C., Vansteenkiste, H., Van Huylenbroeck, J., Steppe, K., Van Labeke,  
27 M.-C., 2011. Influence of ploidy level on morphology, growth and drought  
28 susceptibility in *Spathiphyllum wallisii*. *Acta Physiol. Plant.* 33, 1149–1156.
- 29 Vieira, D.D.S.S., Emiliani, G., Michelozzi, M., Centritto, M., Luro, F., Morillon, R., Loreto,  
30 F., Gesteira, A., Maserti, B., 2016. Polyploidization alters constitutive content of  
31 volatile organic compounds (VOC) and improves membrane stability under water  
32 deficit in Volkamer lemon (*Citrus limonia* Osb.) leaves. *Environ. Exp. Bot.* 126, 1–9.

- 1 Wang, S., Liang, D., Li, C., Hao, Y., Ma, F., Shu, H., 2012. Influence of drought stress on the  
2 cellular ultrastructure and antioxidant system in leaves of drought-tolerant and drought-  
3 sensitive apple rootstocks. *Plant Physiol. Biochem.* 51, 81–89.
- 4 Wang, Z., Wang, M., Liu, L., Meng, F., 2013. Physiological and proteomic responses of diploid  
5 and tetraploid black locust (*Robinia pseudoacacia* L.) subjected to salt stress. *J. Mol.*  
6 *Sci.* 14, 20299–20325.
- 7 Wendel, J.F., 2000. Genome evolution in polyploids. In: *Plant Molecular Evolution*. Springer,  
8 pp. 225–249.
- 9 Woo, H.R., Kim, H.J., Nam, H.G., Lim, P.O., 2013. Plant leaf senescence and death—regulation  
10 by multiple layers of control and implications for aging in general. *J. Cell Sci.* 126,  
11 4823–4833.
- 12 Xiong, Y.-C., Li, F.-M., Zhang, T., 2006. Performance of wheat crops with different  
13 chromosome ploidy: root-sourced signals, drought tolerance, and yield performance.  
14 *Planta* 224, 710.
- 15 Yan, K., Wu, C., Zhang, L., Chen, X., 2015. Contrasting photosynthesis and photoinhibition in  
16 tetraploid and its autodiploid honeysuckle (*Lonicera japonica* Thunb.) under salt stress.  
17 *Front. Plant Sci.* 6.
- 18 Zhang, L., Kusaba, M., Tanaka, A., Sakamoto, W., 2016. Protection of chloroplast membranes  
19 by VIPP1 rescues aberrant seedling development in *Arabidopsis nyc1* mutant. *Front.*  
20 *Plant Sci.* 7.
- 21 Zhang, X.-Y., Hu, C.-G., Yao, J.-L., 2010. Tetraploidization of diploid *Dioscorea* results in  
22 activation of the antioxidant defense system and increased heat tolerance. *J. Plant*  
23 *Physiol.* 167, 88–94.
- 24 Zhao, D., Reddy, K.R., Kakani, V.G., Reddy, V.R., 2005. Nitrogen deficiency effects on plant  
25 growth, leaf photosynthesis, and hyperspectral reflectance properties of sorghum. *Eur.*  
26 *J. Agron.* 22, 391–403.
- 27 Zhao, Z., Shi, H., Wang, M., Cui, L., Zhao, H., Zhao, Y., 2015. Effect of nitrogen and  
28 phosphorus deficiency on transcriptional regulation of genes encoding key enzymes of  
29 starch metabolism in duckweed (*Landoltia punctata*). *Plant Physiol. Biochem.* 86, 72–  
30 81.

**Table 1.** Abaxial epidermis study of diploid (CM2x) and doubled-diploid (CM4x) Citrumelo 4475 and diploid (VK2x) and doubled-diploid (VK4x) Volkamer lemon grown in nutrient reference solution (100%) and without nutrient solution (0%) for 210 days.



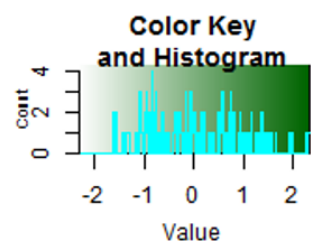
<u>Characters</u>	Citrumelo 2x		Citrumelo 4x		Volkamer lemon 2x		Volkamer lemon 4x	
	100%	0%	100%	0%	100%	0%	100%	0%
<u>Position of stomata</u>	Hypostomatic	Hypostomatic	Hypostomatic	Hypostomatic	Hypostomatic	Hypostomatic	Hypostomatic	Hypostomatic
<u>Stomatal type</u>	Anomocytic	Anomocytic	Anomocytic	Anomocytic	Anomocytic	Anomocytic	Anomocytic	Anomocytic
<u>Stomatal density</u>	60.44	54.10	26.60	35.80	26.96	27.16	19.44	21.00
<u>Length of stomata (µm)</u>	19.11	20.23	27.32	25.65	18.33	18.91	26.82	26.43
<u>Width of stomata (µm)</u>	16.45	16.76	22.70	21.43	16.24	16.57	21.14	21.65
<u>Length of ostiole (µm)</u>	5.51	7.98	10.60	8.95	5.49	6.22	8.46	9.04
<u>Width of ostiole (µm)</u>	2.68	4.14	7.19	5.05	2.78	3.43	5.17	5.70
<u>Trichome type</u>	Absent	Absent	Absent	Absent	Absent	Absent	Absent	Absent

Values are means ( $\pm$  standard error) of 30 independent measurements on 5 different leaves ( $n = 150$ ) for length and width of stomata and ostioles, and of 5 independent measurements on 5 different leaves ( $n = 25$ ) for stomatal density. The heat map shows the differences between genotypes and treatments for each measured characteristic. Values are associated with color ranging from white (low) to dark green (high).

Comment citer ce document :

Oustric, J., Quilichini, Y., Morillon, R., Herbette, S., Luro, F., Giannettini, J., Berti, L., Santini, J. (2019). Tetraploid citrus seedlings subjected to long-term nutrient deficiency are less affected at the ultrastructural, physiological and biochemical levels than diploid ones. *Plant Physiology and Biochemistry*. 135. 372-384. . DOI : 10.1016/i.plaphv.2018.12.020

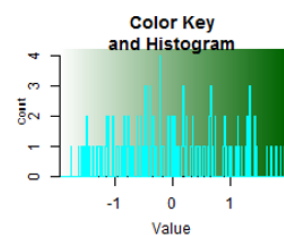
**Table 2.** Ultrastructure of palisade mesophyll cells of diploid (CM2x) and doubled-diploid (CM4x) Citrumelo 4475 and diploid (VK2x) and doubled-diploid (VK4x) Volkamer lemon grown in nutrient reference solution (100%) and without nutrient solution (0%) for 210 days.



		Citumelo 4475 2x		Citumelo 4475 4x		Volkamer lemon 2x		Volkamer lemon 4x	
		Palisade mesophyll cells							
		100%	0%	100%	0%	100%	0%	100%	0%
Cells	Length ( $\mu\text{m}$ )	28.40	<b>24.78</b>	48.83	<b>42.12</b>	33.29	<b>28.10</b>	43.76	<b>45.46</b>
	Width ( $\mu\text{m}$ )	10.20	<b>10.07</b>	23.83	<b>10.23</b>	8.30	<b>6.47</b>	12.77	<b>11.23</b>
	Thickness ( $\mu\text{m}$ )	0.45	<b>0.43</b>	0.76	<b>0.71</b>	0.26	<b>0.29</b>	0.41	<b>0.40</b>
Chloroplasts	Number	8.88	<b>3.00</b>	15.20	<b>7.25</b>	9.40	<b>4.60</b>	13.60	<b>9.60</b>
	Length ( $\mu\text{m}$ )	5.41	<b>2.87</b>	6.34	<b>3.91</b>	5.03	<b>3.45</b>	5.75	5.44
	Width ( $\mu\text{m}$ )	2.40	<b>1.16</b>	2.80	<b>1.28</b>	2.81	<b>2.47</b>	2.60	<b>3.41</b>
Starches	Number	16.51	<b>0.71</b>	30.2	<b>8.12</b>	22.60	<b>8.40</b>	22.20	23.80
	Length ( $\mu\text{m}$ )	1.78	<b>1.21</b>	2.60	<b>1.14</b>	2.13	<b>1.76</b>	1.22	2.74
	Width ( $\mu\text{m}$ )	1.01	<b>0.76</b>	1.43	<b>0.77</b>	1.05	<b>1.06</b>	0.72	<b>1.79</b>
Plastoglobuli	Number	62.50	<b>16.85</b>	59.00	<b>33.00</b>	61.88	<b>26.60</b>	53.00	54.75
	Length ( $\mu\text{m}$ )	0.53	<b>0.61</b>	0.31	<b>0.70</b>	0.41	<b>0.59</b>	0.46	<b>0.47</b>
	Width ( $\mu\text{m}$ )	0.33	<b>0.51</b>	0.52	<b>0.52</b>	0.31	<b>0.39</b>	0.39	<b>0.40</b>
Mitochondria	Number	11.71	<b>4.00</b>	13.40	<b>7.50</b>	13.60	<b>5.20</b>	30.80	<b>7.40</b>
	Length ( $\mu\text{m}$ )	0.85	<b>0.85</b>	0.96	<b>0.68</b>	1.22	<b>0.75</b>	0.97	<b>0.75</b>
	Width ( $\mu\text{m}$ )	0.56	<b>0.61</b>	0.69	<b>0.53</b>	0.69	<b>0.52</b>	0.79	<b>0.40</b>
Grana	Number of grana per cell	22.93	<b>Absent</b>	13.93	<b>Absent</b>	20.60	<b>Absent</b>	26.26	<b>Absent</b>
	Length ( $\mu\text{m}$ )	0.52	<b>Absent</b>	0.34	<b>Absent</b>	0.40	<b>Absent</b>	0.38	<b>Absent</b>
	Width ( $\mu\text{m}$ )	0.60	<b>Absent</b>	0.56	<b>Absent</b>	0.42	<b>Absent</b>	0.42	<b>Absent</b>
	Number of thylakoids per grana	27.26	<b>Absent</b>	25.20	<b>Absent</b>	22.73	<b>Absent</b>	18.13	<b>Absent</b>

Values are means ( $\pm$  standard error) of independent measurements on five different cells section ( $n = 5$ ) for length, width and thickness of cells and for number of chloroplasts, starches, plastoglobuli and mitochondria and of 30 independent measurements on different cells section ( $n = 30$ ) for length and width of chloroplasts, starches, plastoglobuli, mitochondria, grana, number of grana per cells section and number of thylakoids per granum. The heat map shows the differences between genotypes and treatments for each measured characteristic. Values are associated with color ranging from white (low) to dark green (high).

**Table 3.** Ultrastructure of spongy mesophyll cells of diploid (CM2x) and doubled-diploid (CM4x) Citrumelo 4475 and diploid (VK2x) and doubled-diploid (VK4x) Volkamer lemon grown in nutrient reference solution (100%) and without nutrient solution (0%) for 210 days.



		Citrumelo 4475 2x		Citrumelo 4475 4x		Volkamer lemon 2x		Volkamer lemon 4x	
		Spongy mesophyll cells							
		100%	0%	100%	0%	100%	0%	100%	0%
<u>Cells</u>	<u>Length (μm)</u>	20.15	<b>22.64</b>	<b>42.53</b>	<b>28.54</b>	24.51	<b>24.15</b>	31.63	<b>33.56</b>
	<u>Width (μm)</u>	13.40	14.80	27.14	<b>18.28</b>	17.38	<b>15.90</b>	22.40	<b>26.51</b>
	<u>Thickness (μm)</u>	0.78	<b>0.82</b>	0.82	<b>0.89</b>	0.76	<b>0.63</b>	1.08	<b>0.86</b>
<u>Chloroplasts</u>	<u>Number</u>	7.00	<b>2.42</b>	10.00	<b>5.50</b>	7.40	<b>3.66</b>	10.20	<b>6.00</b>
	<u>Length (μm)</u>	5.47	<b>2.44</b>	5.80	<b>3.45</b>	6.55	<b>4.64</b>	6.57	<b>6.52</b>
	<u>Width (μm)</u>	2.83	<b>0.79</b>	2.15	<b>1.04</b>	3.68	<b>3.12</b>	3.40	<b>3.97</b>
<u>Starches</u>	<u>Number</u>	16.60	<b>0.57</b>	16.80	<b>4.87</b>	21.10	<b>6.80</b>	31.80	<b>18.00</b>
	<u>Length (μm)</u>	2.71	<b>1.53</b>	2.30	<b>1.13</b>	3.44	<b>2.44</b>	2.36	<b>3.06</b>
	<u>Width (μm)</u>	1.75	<b>0.81</b>	1.28	<b>0.68</b>	2.13	<b>1.73</b>	1.31	<b>1.68</b>
<u>Plastoglobuli</u>	<u>Number</u>	12.00	<b>11.57</b>	3.40	<b>1.97</b>	23.80	<b>14.60</b>	21.00	<b>18.40</b>
	<u>Length (μm)</u>	0.30	<b>0.54</b>	0.35	<b>0.70</b>	0.38	<b>0.55</b>	0.39	<b>0.41</b>
	<u>Width (μm)</u>	0.21	<b>0.49</b>	0.31	<b>0.52</b>	0.35	<b>0.43</b>	0.30	<b>0.38</b>
<u>Mitochondria</u>	<u>Number</u>	10.80	<b>2.71</b>	8.00	<b>5.50</b>	14.00	<b>9.80</b>	20.80	<b>7.40</b>
	<u>Length (μm)</u>	0.74	<b>0.67</b>	0.71	<b>0.70</b>	0.84	<b>0.66</b>	0.88	<b>0.70</b>
	<u>Width (μm)</u>	0.49	<b>0.45</b>	0.44	<b>0.57</b>	0.70	<b>0.50</b>	0.65	<b>0.58</b>
<u>Grana</u>	Number of grana per cell	11.00	<b>Absent</b>	11.23	<b>Absent</b>	14.06	<b>Absent</b>	16.66	<b>Absent</b>
	<u>Length (μm)</u>	0.63	<b>Absent</b>	0.37	<b>Absent</b>	0.54	<b>Absent</b>	0.54	<b>Absent</b>
	<u>Width (μm)</u>	0.39	<b>Absent</b>	0.51	<b>Absent</b>	0.61	<b>Absent</b>	0.52	<b>Absent</b>
	Number of thylakoids per grana	26.66	<b>Absent</b>	24.69	<b>Absent</b>	21.26	<b>Absent</b>	23.13	<b>Absent</b>

Values are mean ( $\pm$  standard error) of independent measurements on 10 different cells section ( $n = 10$ ) for length, width and thickness of cells, and for number of chloroplasts, starches, plastoglobuli and mitochondria and of 30 independent measurements on different cells section ( $n = 30$ ) for length and width of chloroplasts, starches, plastoglobuli, mitochondria, grana, number of grana per cell section, and number of thylakoids per granum. The heat map shows the differences between genotypes and treatments for each measured characteristic. Values are associated with color ranging from white (low) to dark green (high).

## Figure captions

**Figure 1.** Scanning electron micrographs of abaxial epidermis (1A, 1B, 1E, 1F, 1I, 1J, 1M, 1N; scale bar: 50  $\mu\text{m}$ ) and stomata (1C, 1D, 1G, 1H, 1K, 1L, 1O, 1P; scale bar: 10  $\mu\text{m}$ ) in diploid (CM2x) and doubled-diploid (CM4x) Citrumelo 4475 and diploid (VK2x) and doubled-diploid (VK4x) Volkamer lemon grown in nutrient reference solution (100%) and without nutrient solution (0%) for 210 days. ST: ostiole (stoma); EC: epithelial cells; GC: guard cells.

**Figure 2.** Transmission electron micrographs of palisade mesophyll cells (3A, 3B, 3C, 3D, 3I, 3J, 3K, 3L; scale bar: 5  $\mu\text{m}$ ) and their respective chloroplasts (3E, 3F, 3G, 3H, 3M, 3N, 3O, 3P; scale bar: 1  $\mu\text{m}$ ) in diploid (CM2x) and doubled-diploid (CM4x) Citrumelo 4475 and diploid (VK2x) and doubled-diploid (VK4x) Volkamer lemon grown in nutrient reference solution (100%) and without nutrient solution (0%) for 210 days. St: starch; Pg: plastoglobule; Mt: mitochondria; Gr: granum.

**Figure 3.** Transmission electron micrographs of spongy mesophyll cells (3A, 3B, 3C, 3D, 3I, 3J, 3K, 3L; scale bar: 5  $\mu\text{m}$ ) and their respective chloroplasts (3E, 3F, 3G, 3H, 3M, 3N, 3O, 3P; scale bar: 1  $\mu\text{m}$ ) in diploid (CM2x) and doubled-diploid (CM4x) Citrumelo 4475 and diploid (VK2x) and doubled-diploid (VK4x) Volkamer lemon grown in nutrient reference solution (100%) and without nutrient solution (0%) for 210 days. St: starch; Pg: plastoglobule; Mt: mitochondria; Gr: granum.

**Figure 4.** Determination of (A) net photosynthetic rate ( $P_{\text{net}}$ ), (B) stomatal conductance ( $G_s$ ), and (C) chlorophyll *a* fluorescence ( $F_v/F_m$ ) after 210 days of nutrient deficiency in leaves of diploid (CM2x) and doubled-diploid (CM4x) Citrumelo 4475 and diploid (VK2x) and doubled-diploid (VK4x) Volkamer lemon. The white circles correspond to the control (100%) and the black circles to the plant without nutrition (0%). Values are mean ( $\pm$  standard error) of 9 independent measurements from 3 different trees for each genotype ( $n = 9$ ). Ploidy and treatment effects were analyzed using ANOVA and Fisher LSD tests ( $P < 0.05$ ). Distinct letters indicate significant differences between all genotypes and treatments.



**Figure 5.** Leaf damages after 210 days of total nutrient deficiency.

**Figure 6.** Total content of nitrogen (N), phosphorus (P), potassium (K), magnesium (Mg), calcium (Ca), sodium (Na), iron (Fe), manganese (Mn), copper, zinc (Zn) and boron (B) in leaves of diploid (CM2x) and doubled-diploid (CM4x) Citrumelo 4475 and diploid (VK2x) and doubled-diploid (VK4x) Volkamer lemon grown in nutrient reference solution (100%) and without nutrient solution (0%) after 210 days. The white circles correspond to the control (100%) and the black circles to the plant without nutrition (0%). Values are mean ( $\pm$  standard error) of 3 independent measurements from 3 samples for each genotype, i.e. one per tree, obtained by pooling 8 fully-expanded leaves ( $n = 3$ ). Data were analysed using ANOVA and Fisher LSD tests ( $P < 0.05$ ). Different letters indicate significant differences between genotypes and treatments.

**Figure 7.** Determination of specific activities of (A) superoxide dismutase (SOD), (B) catalase (CAT) and (C) ascorbate peroxidase (APX) and (D) hydrogen peroxide ( $H_2O_2$ ) and (E) malondialdehyde (MDA) after 210 days of nutrient deficiency in leaves of diploid (CM2x) and doubled-diploid (CM4x) Citrumelo 4475 and diploid (VK2x) and doubled-diploid (VK4x) Volkamer lemon. The white circles correspond to the control (100%) and the black circles to the plant without nutrition (0%). Values are mean ( $\pm$  standard error) of 3 independent measurements from 3 samples for each genotype, i.e. one per tree, obtained by pooling 8 fully-expanded leaves ( $n = 3$ ). Ploidy and treatment effects were analyzed using ANOVA and Fisher LSD tests ( $P < 0.05$ ). Distinct letters indicate significant differences between all genotypes and treatments.

## Figures

Fig. 1

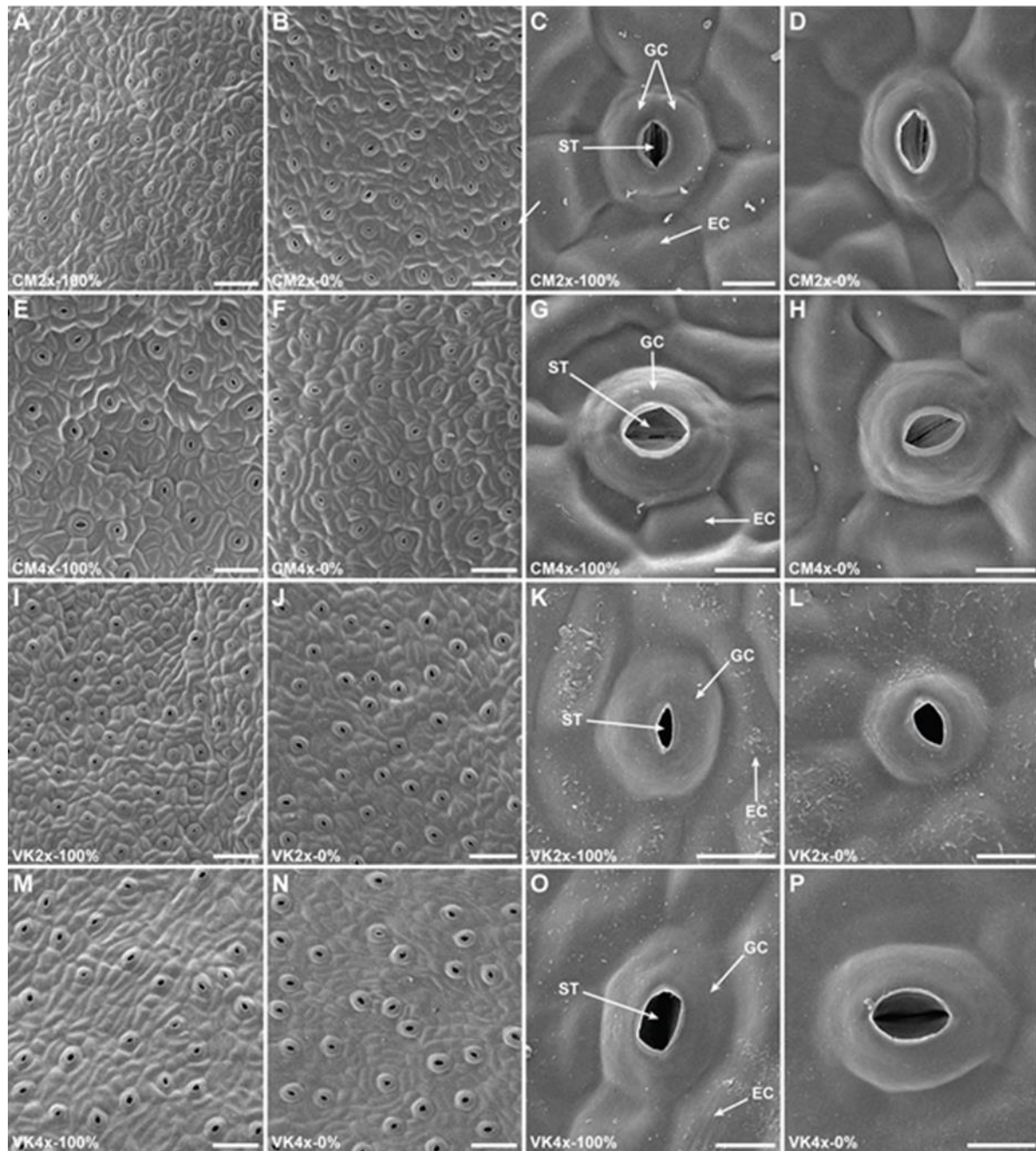
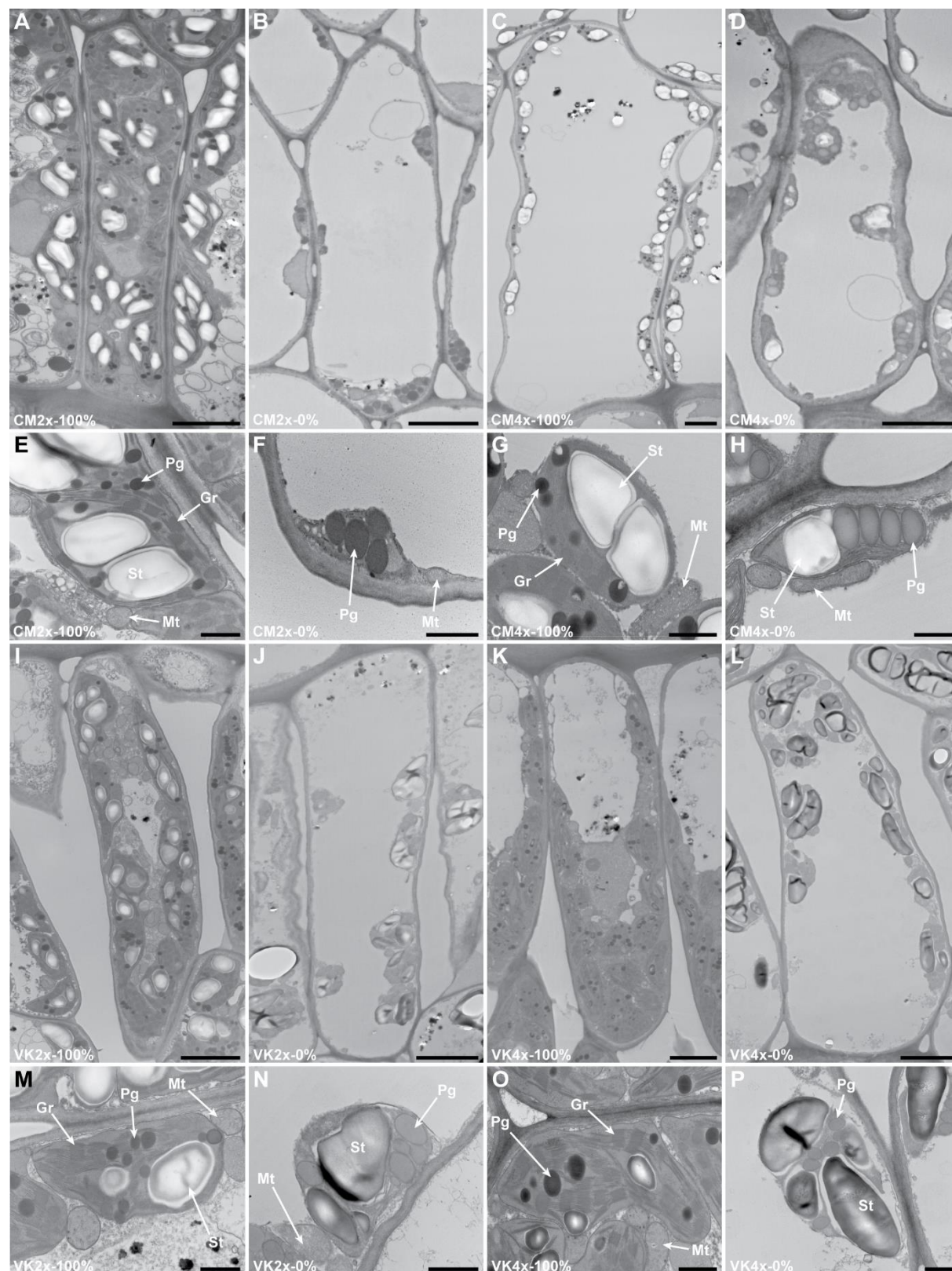


Fig. 2



Comment citer ce document :

Oustric, J., Quilichini, Y., Morillon, R., Herbette, S., Luro, F., Giannettini, J., Berti, L., Santini, J. (2019). Tetraploid citrus seedlings subjected to long-term nutrient deficiency are less affected at the ultrastructural, physiological and biochemical levels than diploid ones. *Plant Physiology and Biochemistry*. 135. 372-384. . DOI : 10.1016/j.plaphy.2018.12.020

Fig. 3

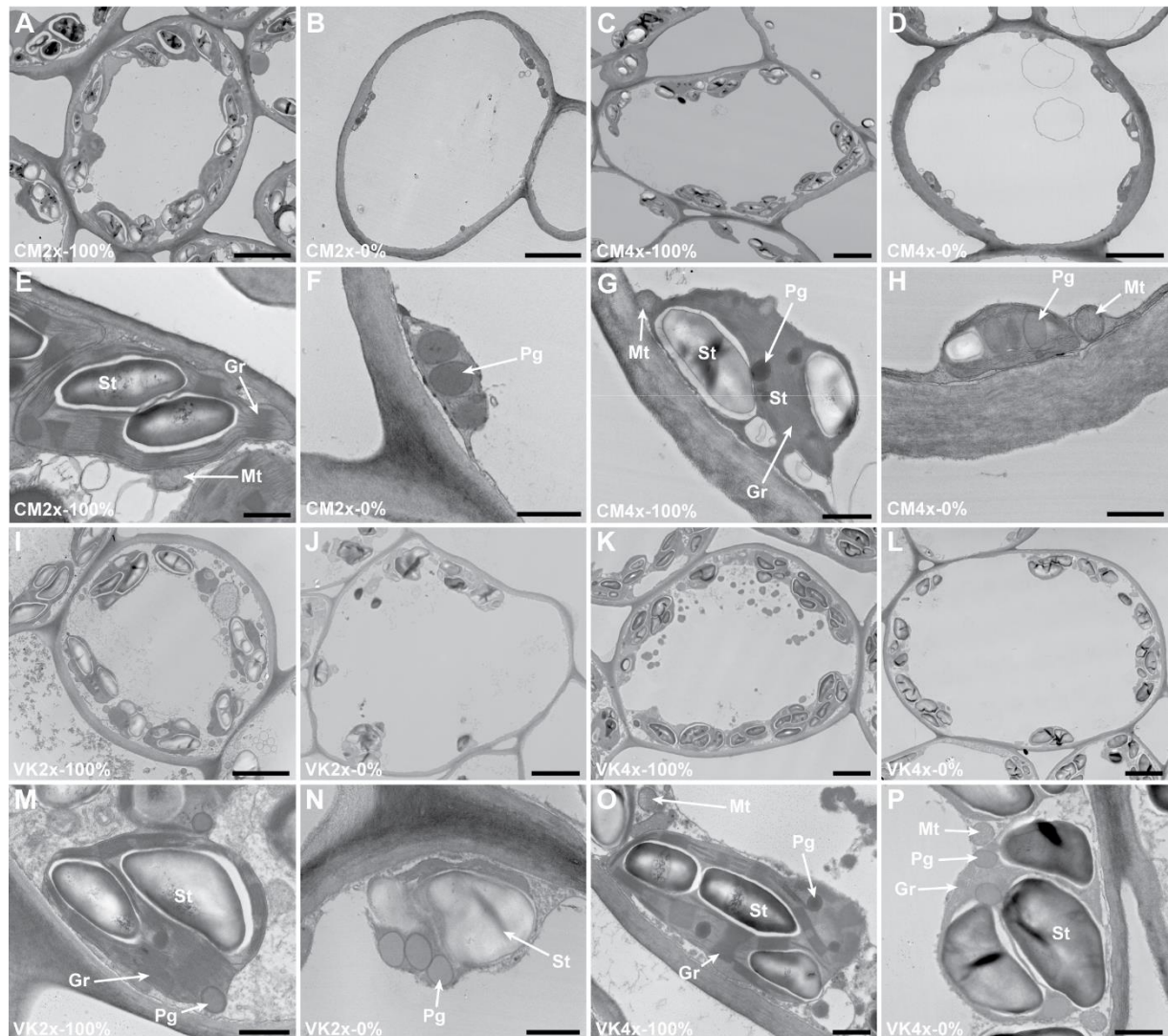


Fig. 4

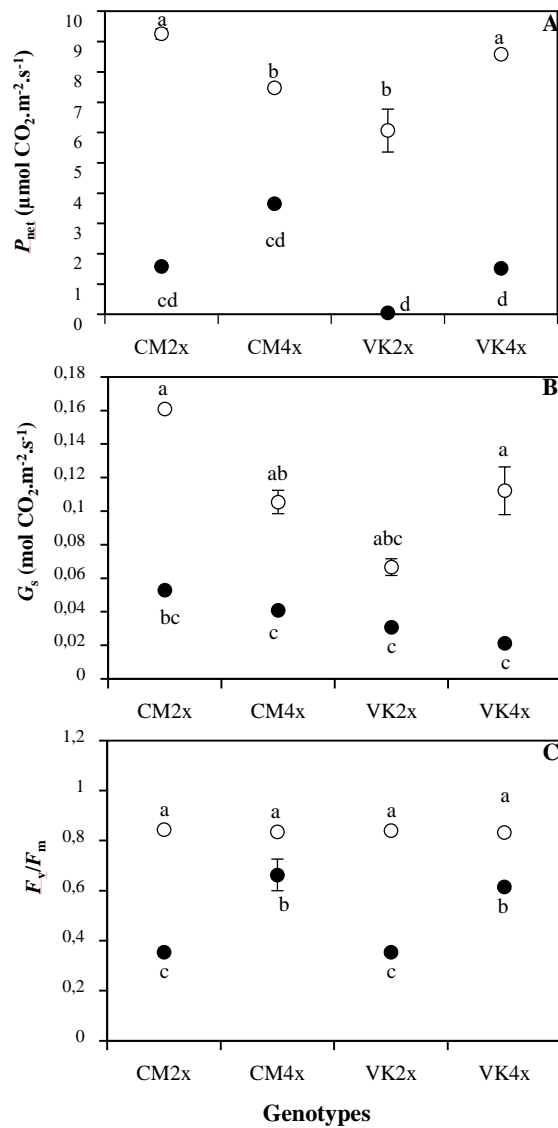


Fig. 5

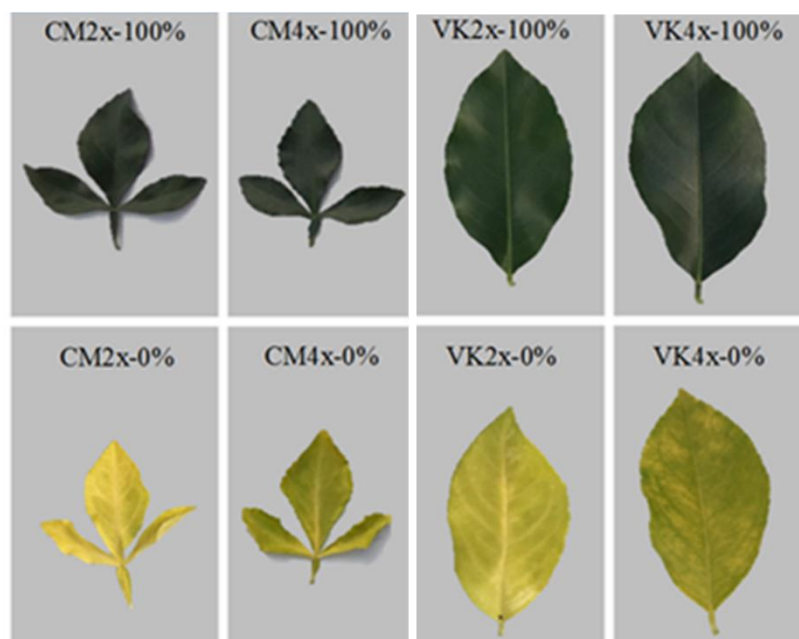
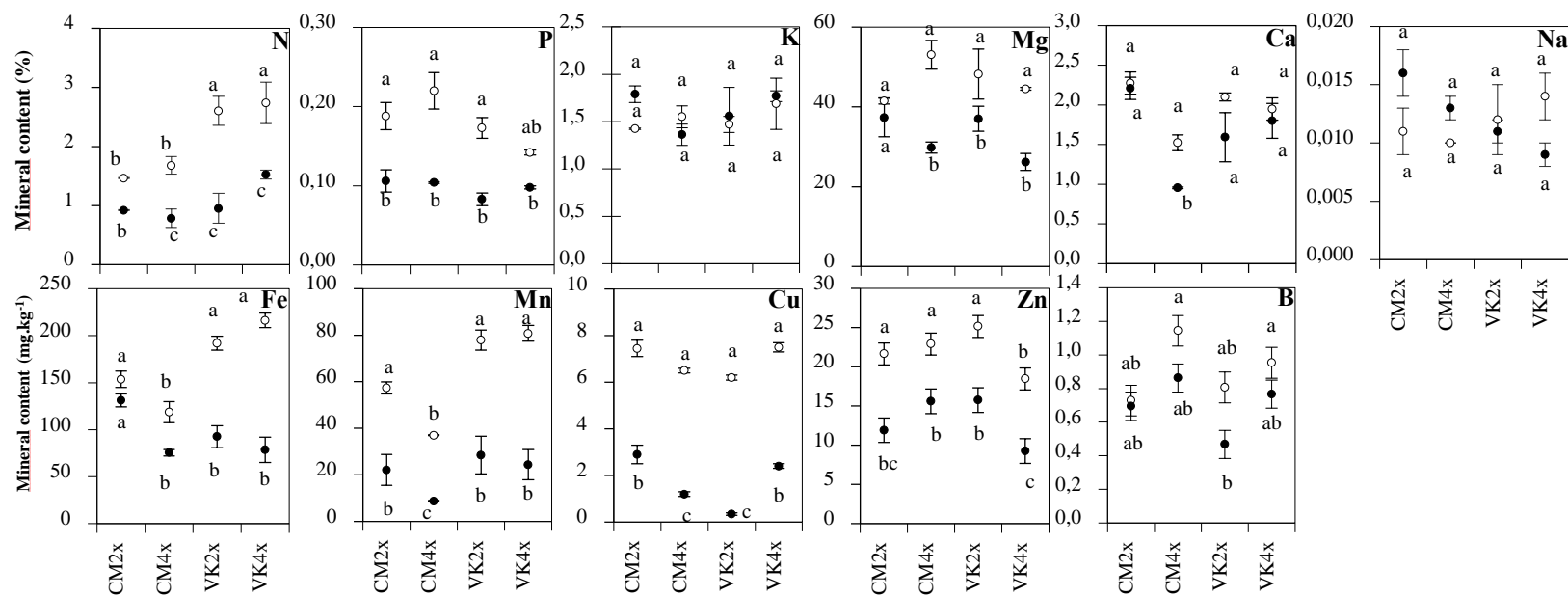


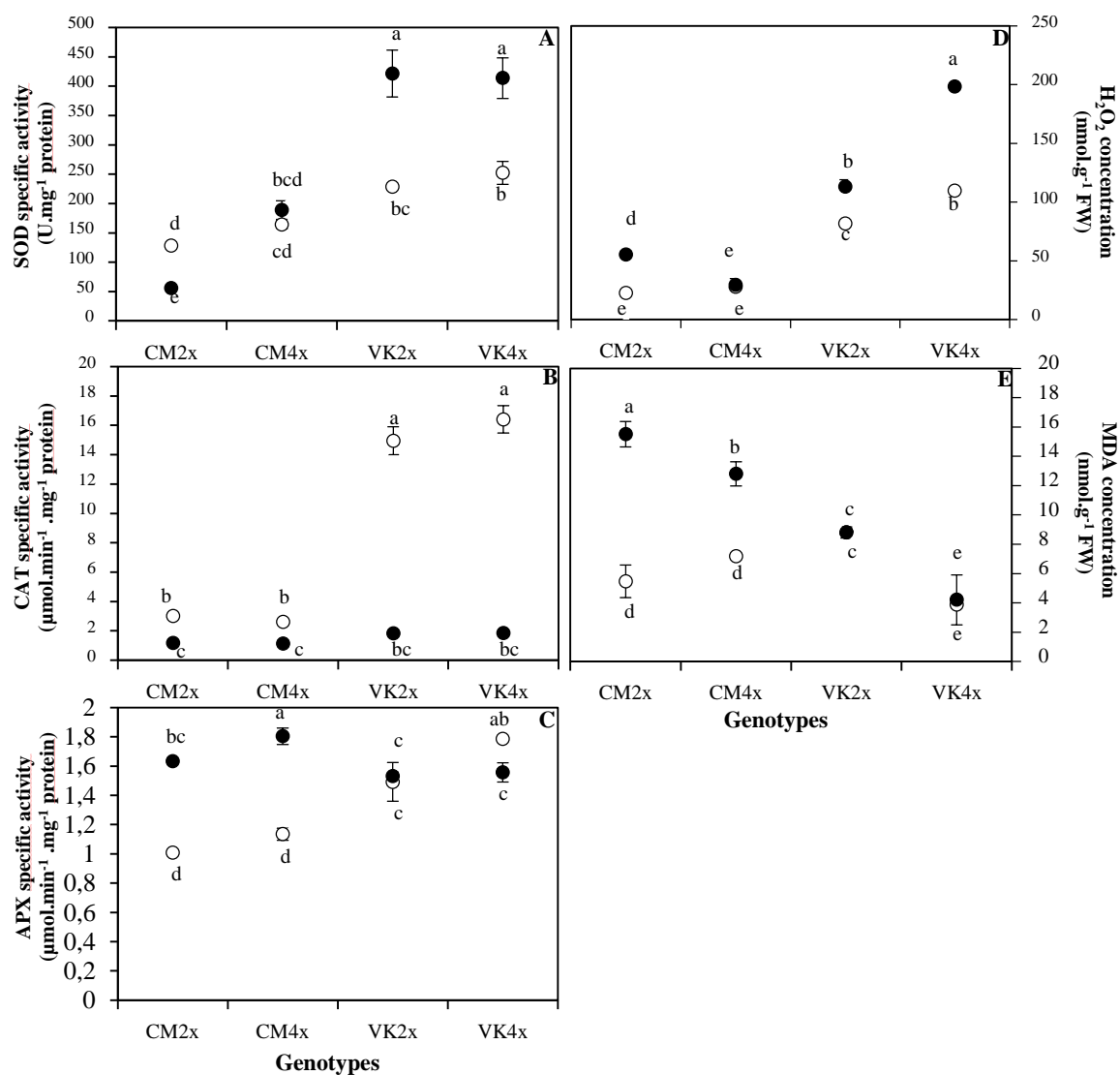
Fig 6.



Comment citer ce document :

Oustric, J., Quilichini, Y., Morillon, R., Herbette, S., Luro, F., Giannettini, J., Berti, L., Santini, J. (2019). Tetraploid citrus seedlings subjected to long-term nutrient deficiency are less affected at the ultrastructural, physiological and biochemical levels than diploid ones. *Plant Physiology and Biochemistry*. 135. 372-384. . DOI : 10.1016/i.plaphy.2018.12.020

Fig. 7





## Supplementary data

Table 1. Probability values produced by analysis of variance (ANOVA) of abaxial epidermis datasets of experimentation conditions.

	Stomatal density	Length of stomata ( $\mu\text{m}$ )	Width of stomata ( $\mu\text{m}$ )	Length of ostiole ( $\mu\text{m}$ )	Width of ostiole ( $\mu\text{m}$ )
A (genotype)	$10^{-15}$	0.063	0.015	$10^{-14}$	$10^{-5}$
B (ploidy)	$10^{-15}$	$10^{-15}$	$10^{-15}$	$10^{-15}$	$10^{-15}$
C (treatment)	0.620	0.708	0.860	$10^{-5}$	0.225
D (A x B x C)	$10^{-15}$	$10^{-15}$	$10^{-15}$	$10^{-15}$	$10^{-15}$

Initial data were subjected to a two-way analysis of variance. The qualitative factors studied were genotype, ploidy, treatment and their interaction. The analyses were performed on a group of three trees. The *p* values showing the level of significance of each qualitative factor are presented.

Table 2. Probability values produced by analysis of variance (ANOVA) on palisadic mesophyll cells ultrastructural datasets of experimentation conditions.

	Cells			Chloroplasts			Starches			Plastoglobuli			Mitochondria			Grana			
	Length ( $\mu\text{m}$ )	Width ( $\mu\text{m}$ )	Thickness ( $\mu\text{m}$ )	Number	Length ( $\mu\text{m}$ )	Width ( $\mu\text{m}$ )	Number	Length ( $\mu\text{m}$ )	Width ( $\mu\text{m}$ )	Number	Length ( $\mu\text{m}$ )	Width ( $\mu\text{m}$ )	Number	Length ( $\mu\text{m}$ )	Width ( $\mu\text{m}$ )	Number of grana per cell	Length ( $\mu\text{m}$ )	Width ( $\mu\text{m}$ )	Number of thylakoids per grana
A (genotype)	0.367	0.013	$10^{-4}$	0.149	$10^{-12}$	$10^{-15}$	$10^{-3}$	0.145	$10^{-10}$	$10^{-4}$	0.141	0.573	$10^{-3}$	0.032	0.800	$10^{-4}$	0.054	$10^{-6}$	0.010
B (ploidy)	$10^{-8}$	$10^{-3}$	$10^{-5}$	0.002	0.005	0.505	0.048	0.242	$10^{-6}$	0.91	0.876	0.849	0.573	0.535	0.330	$10^{-3}$	0.389	0.810	0.642
C (treatment)	0.093	0.008	0.048	$10^{-8}$	0.962	0.878	$10^{-8}$	0.529	0.013	0.714	$10^{-4}$	$10^{-8}$	$10^{-4}$	0.088	0.211	NA	NA	NA	NA
D (A x B x C)	$10^{-8}$	$10^{-14}$	$10^{-15}$	$10^{-10}$	$10^{-15}$	$10^{-15}$	$10^{-15}$	0.333	$10^{-15}$	$10^{-5}$	$10^{-15}$	$10^{-15}$	$10^{-8}$	$10^{-2}$	0.509	$10^{-4}$	0.159	$10^{-6}$	0.023

Initial data were subjected to a two-way analysis of variance. The qualitative factors studied were genotype, ploidy, treatment and their interaction. The analyses were performed on a group of three trees. The  $p$  values showing the level of significance of each qualitative factor are presented.

Table 3. Probability values produced by analysis of variance (ANOVA) on spongy mesophyll cells ultrastructural datasets of experimentation conditions.

	Cells			Chloroplasts			Starches			Plastoglobuli			Mitochondria			Grana			
	Length ( $\mu\text{m}$ )	Width ( $\mu\text{m}$ )	Thickness ( $\mu\text{m}$ )	Number	Length ( $\mu\text{m}$ )	Width ( $\mu\text{m}$ )	Number	Length ( $\mu\text{m}$ )	Width ( $\mu\text{m}$ )	Number	Length ( $\mu\text{m}$ )	Width ( $\mu\text{m}$ )	Number	Length ( $\mu\text{m}$ )	Width ( $\mu\text{m}$ )	Number of grana per cell	Length ( $\mu\text{m}$ )	Width ( $\mu\text{m}$ )	Number of thylakoids per grana
A (genotype)	0.727	0.113	0.455	0.149	$10^{-12}$	$10^{-15}$	$10^{-3}$	0.145	$10^{-10}$	$10^{-4}$	0.141	0.573	$10^{-3}$	0.032	0.8	$10^{-4}$	0.054	$10^{-6}$	0.01
B (ploidy)	$10^{-4}$	$10^{-7}$	$10^{-7}$	0.002	0.005	0.505	0.048	0.242	$10^{-6}$	0.91	0.876	0.849	0.573	0.535	0.33	$10^{-3}$	0.389	0.81	0.642
C (treatment)	0.446	0.743	0.743	$10^{-8}$	0.962	0.878	$10^{-8}$	0.529	0.013	0.714	$10^{-4}$	$10^{-8}$	$10^{-4}$	0.088	0.211	NA	NA	NA	NA
D (A x B x C)	$10^{-4}$	$10^{-11}$	$10^{-11}$	$10^{-10}$	$10^{-15}$	$10^{-15}$	$10^{-15}$	0.333	$10^{-15}$	$10^{-5}$	$10^{-15}$	$10^{-15}$	$10^{-8}$	$10^{-3}$	0.509	$10^{-4}$	0.159	$10^{-6}$	0.023

Initial data were subjected to a two-way analysis of variance. The qualitative factors studied were genotype, ploidy, treatment and their interaction. The analyses were performed on a group of three trees. The *p* values showing the level of significance of each qualitative factor are presented.

Table 4. Probability values produced by analysis of variance (ANOVA) on physiological and biochemical datasets of experimentation conditions.

	$P_{net}$	$G_s$	$F_v/F_m$	SOD	CAT	APX	H <sub>2</sub> O <sub>2</sub>	MDA
A (genotype)	0.654	0.243	0.531	10 <sup>-4</sup>	0.005	0.07	0.000	0.022
B (ploidy)	0.288	0.992	0.256	0.305	0.845	0.13	0.195	0.148
C (treatment)	10 <sup>-7</sup>	10 <sup>-4</sup>	10 <sup>-4</sup>	0.082	0.002	0.04	0.078	0.002
D (A x B x C)	10 <sup>-6</sup>	0.008	10 <sup>-4</sup>	10 <sup>-6</sup>	10 <sup>-5</sup>	10 <sup>-6</sup>	0.000	10 <sup>-5</sup>

Initial data were subjected to a two-way analysis of variance. The qualitative factors studied were genotype, ploidy, treatment and their interaction. The analyses were performed on a group of three trees. The *p* values showing the level of significance of each qualitative factor are presented.

Table 5. Probability values produced by analysis of variance (ANOVA) on minerals datasets of experimentation conditions.

	N%	P%	K%	Mg%	Ca%	Na%	Fe mg.kg <sup>-1</sup>	Mn mg.kg <sup>-1</sup>	Cu mg.kg <sup>-1</sup>	Zn mg.kg <sup>-1</sup>	B mg.kg <sup>-1</sup>
A (genotype)	0.174	0.066	0.259	0.635	0.235	0.448	0.818	0.976	0.930	0.766	0.144
B (ploidy)	0.739	0.261	0.898	0.079	0.795	0.234	0.463	0.205	0.944	0.063	0.261
C (treatment)	0.025	0.001	0.276	0.009	0.007	0.070	0.009	0.162	10 <sup>-7</sup>	0.309	0.540
D (A x B x C)	10 <sup>-4</sup>	10 <sup>-4</sup>	0.386	0.028	10 <sup>-4</sup>	0.251	0.089	0.318	10 <sup>-4</sup>	0.042	0.441

Initial data were subjected to a two-way analysis of variance. The qualitative factors studied were genotype, ploidy, treatment and their interaction. The analyses were performed on a group of three trees. The *p* values showing the level of significance of each qualitative factor are presented.

Comment citer ce document :

Oustric, J., Quilichini, Y., Morillon, R., Herbette, S., Luro, F., Giannettini, J., Berti, L., Santini, J. (2019). Tetraploid citrus seedlings subjected to long-term nutrient deficiency are less affected at the ultrastructural, physiological and biochemical levels than diploid ones. *Plant Physiology and Biochemistry*. 135. 372-384. . DOI : 10.1016/i.plaphy.2018.12.020