



HAL
open science

Indexing and Linking Text in a Large Body of Family Writings

Beatrice Dal Bo, Francesca Frontini, Giancarlo Luxardo, Agnès Steuckardt

► **To cite this version:**

Beatrice Dal Bo, Francesca Frontini, Giancarlo Luxardo, Agnès Steuckardt. Indexing and Linking Text in a Large Body of Family Writings. Digital Humanities 2019, Jul 2019, Utrecht, Netherlands. , 2019. hal-02187300

HAL Id: hal-02187300

<https://hal.science/hal-02187300v1>

Submitted on 17 Jul 2019

HAL is a multi-disciplinary open access archive for the deposit and dissemination of scientific research documents, whether they are published or not. The documents may come from teaching and research institutions in France or abroad, or from public or private research centers.

L'archive ouverte pluridisciplinaire **HAL**, est destinée au dépôt et à la diffusion de documents scientifiques de niveau recherche, publiés ou non, émanant des établissements d'enseignement et de recherche français ou étrangers, des laboratoires publics ou privés.



Nom et adresse de l'EXPÉDITEUR
 Rouault Touche
 Sabatier de 1^{re} classe
 291^e Régiment d'Artillerie
 tous frontal n° 57



Indexing and Linking Text in a Large Body of Family Writings

Beatrice Dal Bo; Francesca Frontini; Giancarlo Luxardo; Agnès Steuckardt

Praxiling UMR 5267 - Montpellier, France

THE PROJECT

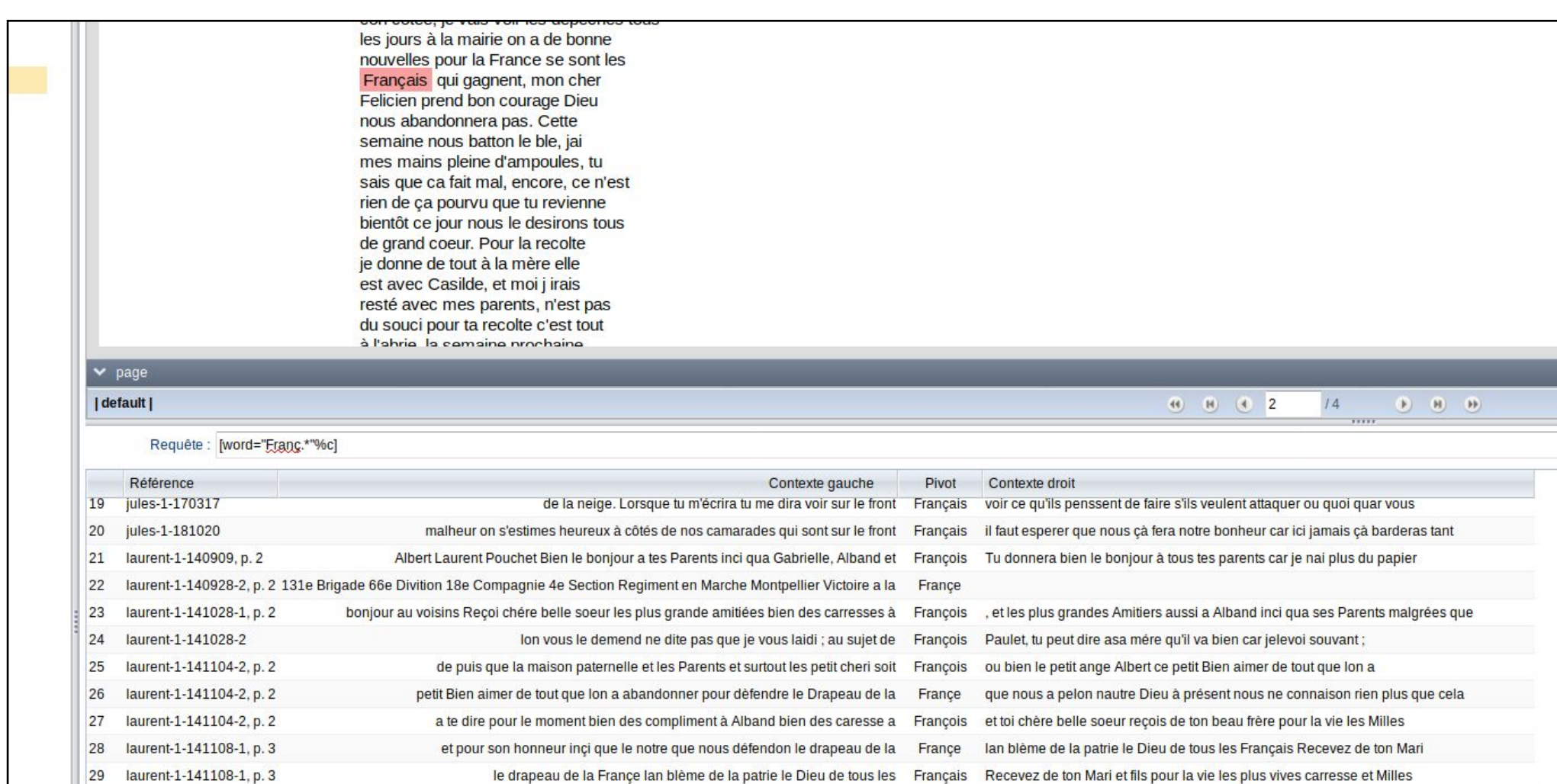
The **Corpus 14** project aims at building a digital edition of correspondences of **French soldiers in WW1**. Writers are soldiers and their families, with **little formal education**. The main objectives are:

- the **study of the Great War** and its legacy
- the evolution of the **linguistic uses** in wartime



THE CORPUS

- The corpus is comprised of almost **1800 correspondences** written by **37 writers** in **11 areas** for a total of almost **500,000 tokens**.
- The transcripts are encoded in conformance with the TEI guidelines, which allowed to keep the alignment between the text and the facsimile.
- Sources are browsable and downloadable either from the **ORTOLANG** repository or from a **TXM** portal (with CQP queries).



RELATED STUDIES

- Most notable projects (**Mapping the Republic of Letters**; **Early Modern Letters Online**; **Clavius on the Web**) work on the correspondences of intellectuals. An exception is **The Migrant Letter Digitised** (O'Leary and Moreton, 2017).
- A **TEI Correspondence Element** was introduced in the 2.8.0 version of TEI P5.
- Project **Testament des poilus** - different genre, same writers - was an inspiration for the indexes.

ANNOTATION

TEIheader - `<correspDesc>` for the identification of sender(s), addressee(s), relationship, date and place of sending

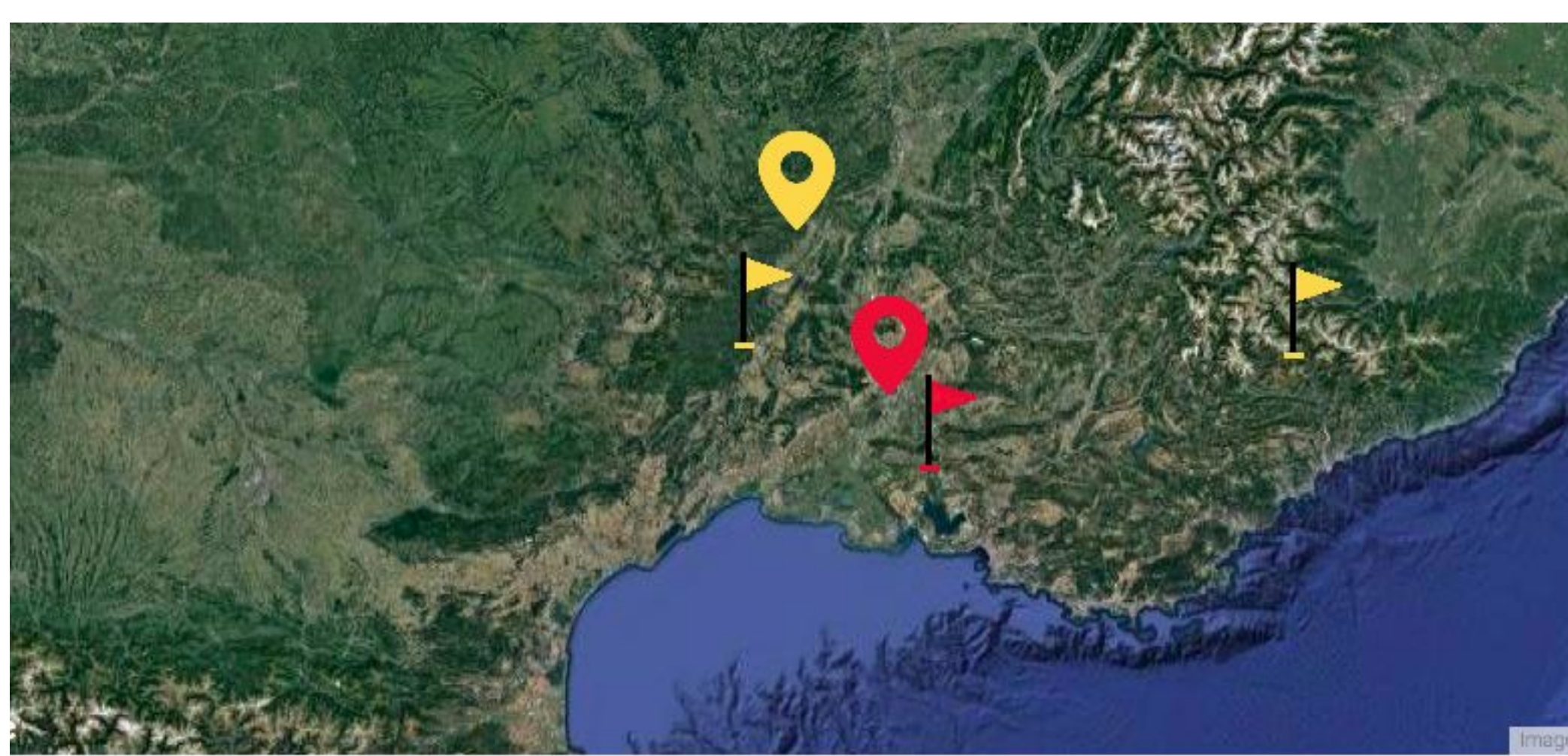
Ongoing development:

- Annotation of places, people, organisations.
- `<placeName>` `<persName>` `<orgName>`
- Internal indexes for references + link to external resources (DBpedia, Geonames)

```
<listPlace>
  <place xml:id="Le_Soulié">
    <placeName>
      <settlement type="city">Le Soulié</settlement>
    </placeName>
    <location>
      <region type="FrenchDepartment">Hérault</region>
      <country>France</country>
    </location>
    <location type="geographicalCoordinates">
      <!-- latitude + longitude -->
      <geo-N 43°33'05" E 2°41'22"></geo>
    </location>
    <note type="history"><p></p></note>
    <!-- bibl -->
    <!-- bibl -->
    <idno type="geonamesURI">http://sws.geonames.org/3000097/le-soulié.html</idno>
    <idno type="dbpediaURI">http://fr.dbpedia.org/resource/Le_Soulié</idno>
  </place>
</listPlace>
<place xml:id="Cessenon_sur_Orbnan">
```

THE VISUALISATION

- 1) Identify places and persons evoked in the correspondences between soldiers and their families
- 2) Trace the level of mobility of soldiers and family members



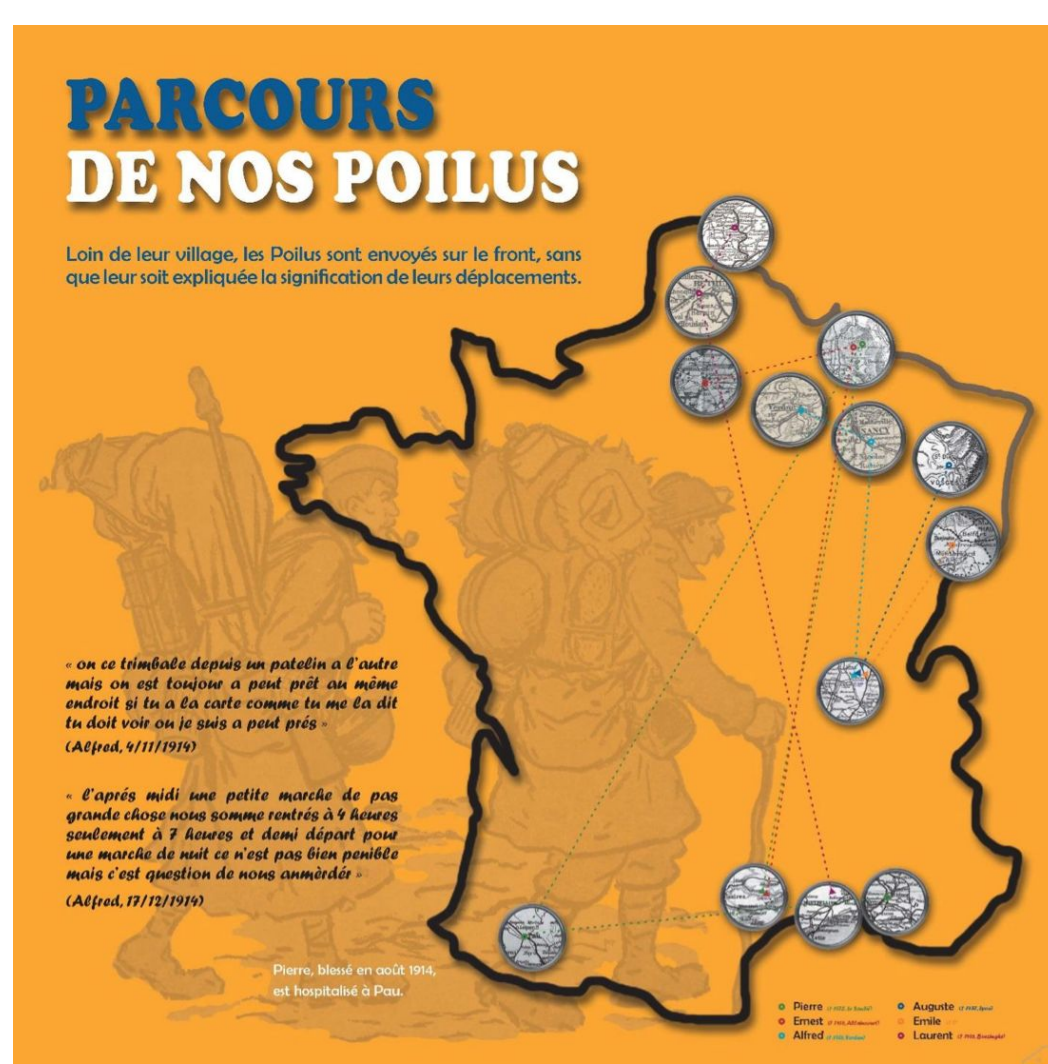
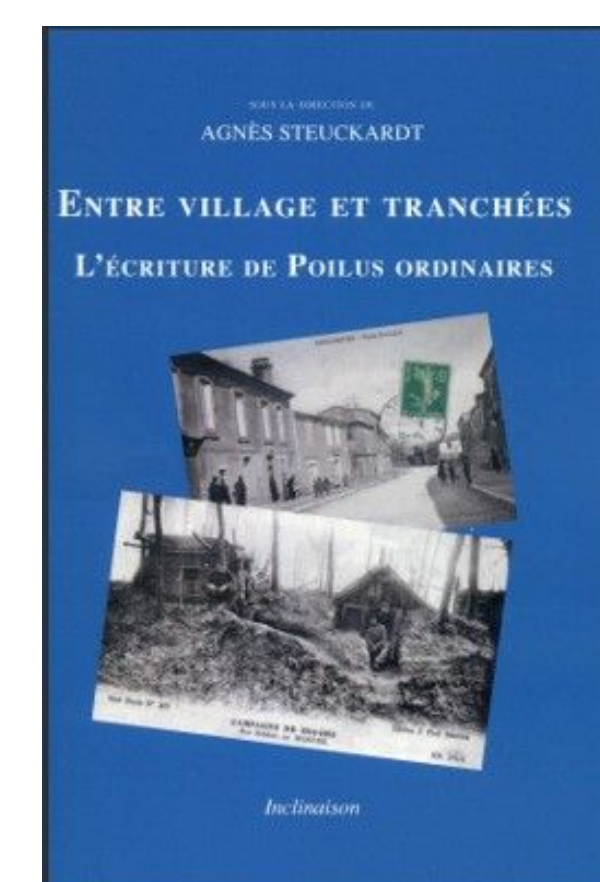
Choose People: FELICIEN, VICTORIA
 Read Letters: 11 NOV 14, 28 OCT 14

The visualisation interface was developed in collaboration with Pietro Barbieri, Chiara Capone and Luca Ciccone, MSc students in computer science, supervised by Marina Ribaud, associate professor at DIBRIS, Università degli Studi di Genova.

RESEARCH OUTCOMES

Steuckardt, A. (ed) (2015). *Entre villages et tranchées: l'écriture de poilus ordinaires*. Uzès: Inclinaison.

Roynette, O., Siouffi, G. and Steuckardt, A. (eds) (2017). *La langue sous le feu : mots, textes, discours de la Grande Guerre*. Rennes: Presses universitaires de Rennes.



La Grande Guerre des gens "ordinaires". Conference, Montpellier, 2018.

L'écriture des Poilus ordinaires. Travelling exhibition since 2014.



Corpus 14 is a project of Laboratoire Praxiling UMR 5267 CNRS & Université Paul-Valéry Montpellier 3

Project: <https://www.univ-montp3.fr/corpus14/>

Laboratory: <http://www.praxiling.fr>