

# Data simulation to improve supervised segmentation of apple scab images

RECHERCHE  
EXPÉRIMENTATION  
INNOVATION

Fruits  
Légumes  
Ornement  
Plantes aromatiques  
et médicinales  
Semences  
Cidriculture  
Viticulture  
Paysage

AGROCAMPUS  
OUEST  
ANGERS,  
FRANCE

4&5 DÉC.  
2018

10<sup>e</sup>  
édition



UNIVERSITÉ  
LUMIÈRE  
LYON 2  
UNIVERSITÉ DE LYON



Carbon Bee



université  
angers



ÉCOLE  
CENTRALE LYON



INSA  
LYON

LIRIS



# Apple scab

- Infection of fruit by a fungus which can cause major production loss for farmers.



*Source image : Wikipedia*

# Apple scab

- Infection of fruit by a fungus which can cause major production loss for farmers.
- Early and automatic detection would be of major interest.



*Source image : Wikipedia*

# Apple scab

- Infection of fruit by a fungus which can cause major production loss for farmers.
- Early and automatic detection would be of major interest.
- Use of infrared imaging. <sup>1</sup>



Source image : Wikipedia



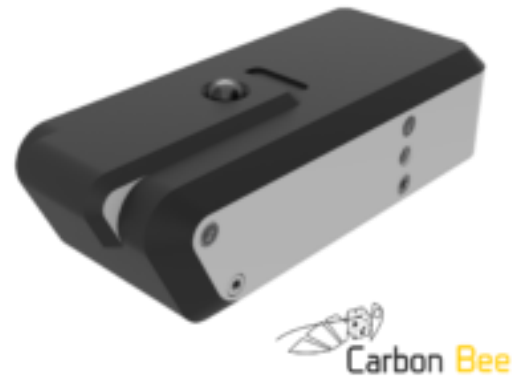
RGB

IR

# Image acquisition

# Image acquisition

Carbon Bee sensor

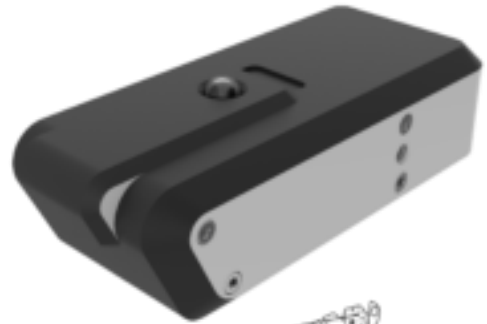


# Image acquisition



RGB

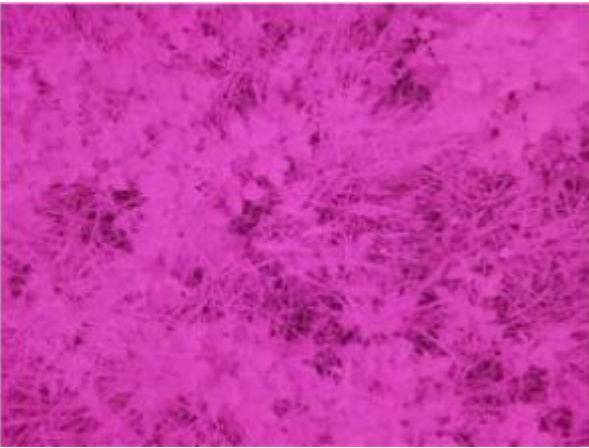
Carbon Bee sensor



# Image acquisition

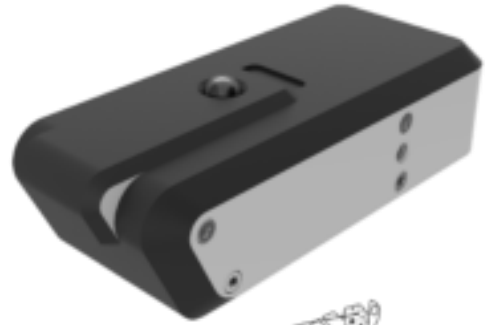


RGB



IR

Carbon Bee sensor

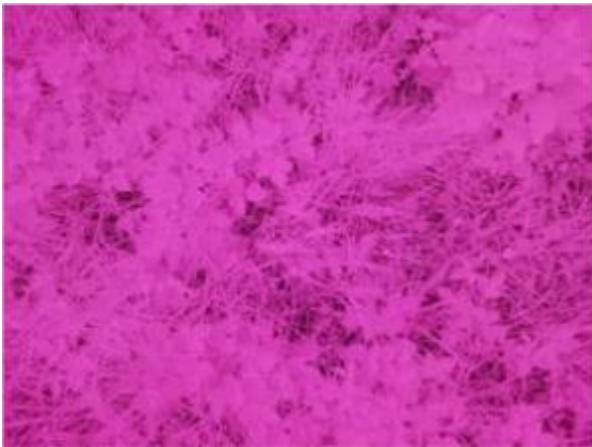




# Image acquisition

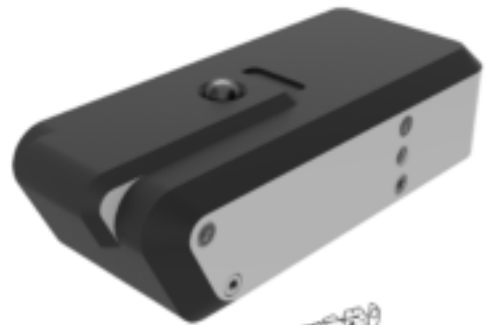


RGB

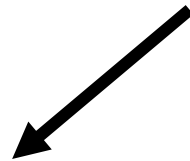
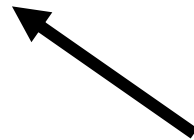


IR

Carbon Bee sensor



Hyperspectral

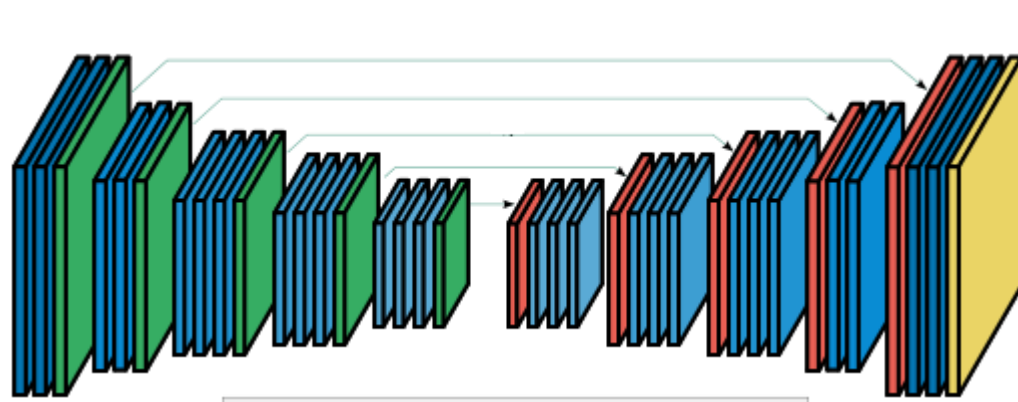
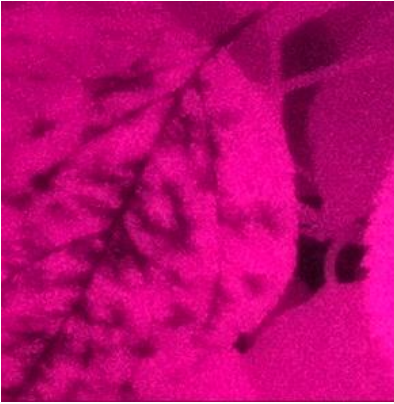


# Segmentation by neural networks

- Segmentation of apple scab : localization of scab pixels on an image.

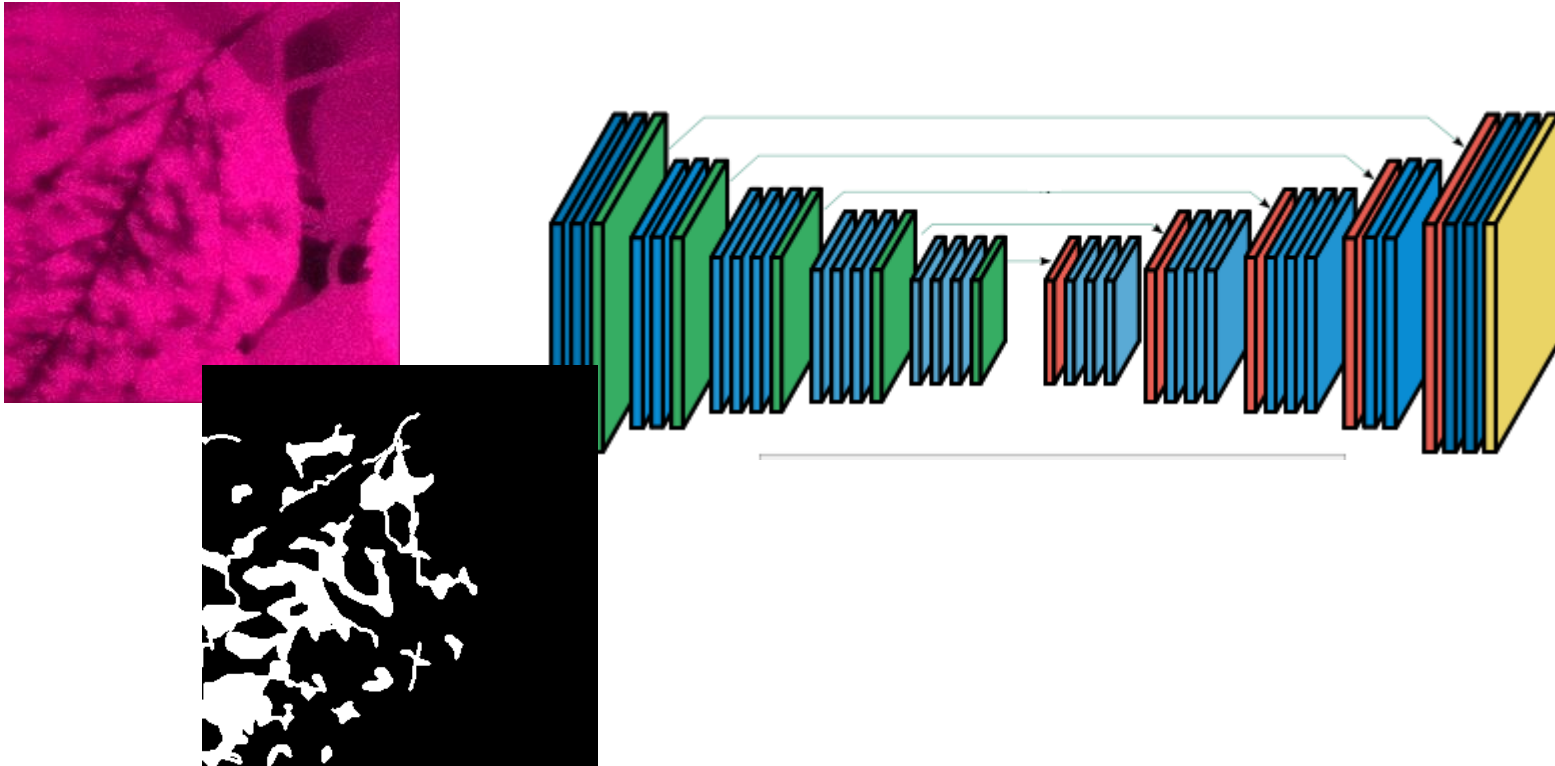
# Segmentation by neural networks

- Segmentation of apple scab : localization of scab pixels on an image.
- Done here by Convolutional Neural Networks (SegNet).



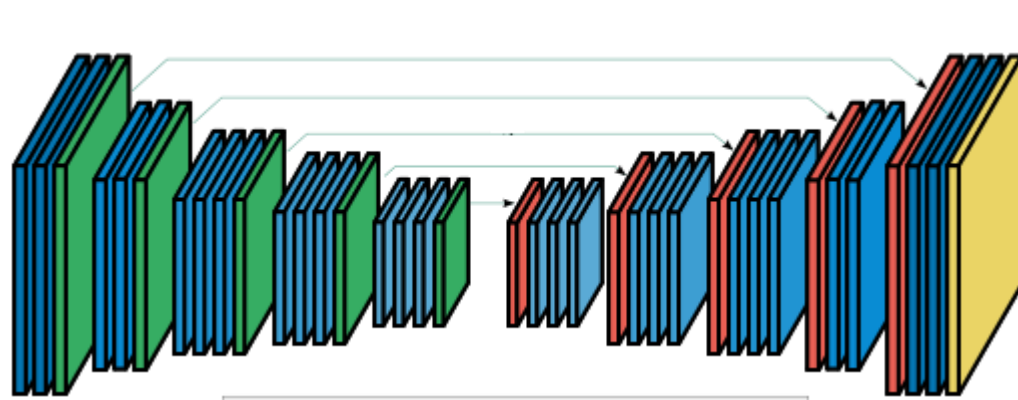
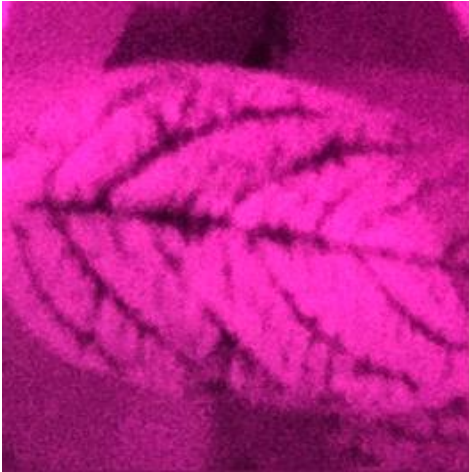
# Segmentation by neural networks

- Segmentation of apple scab : localization of scab pixels on an image.
- Done here by Convolutional Neural Networks (SegNet).



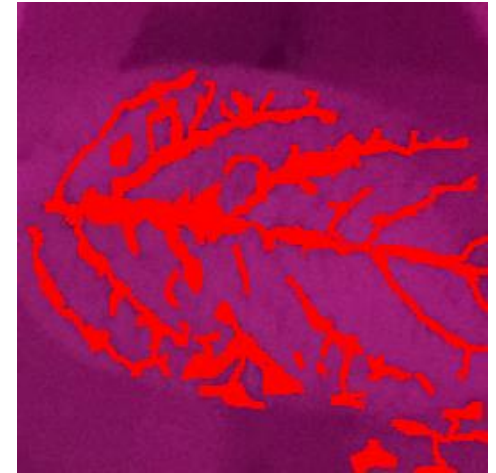
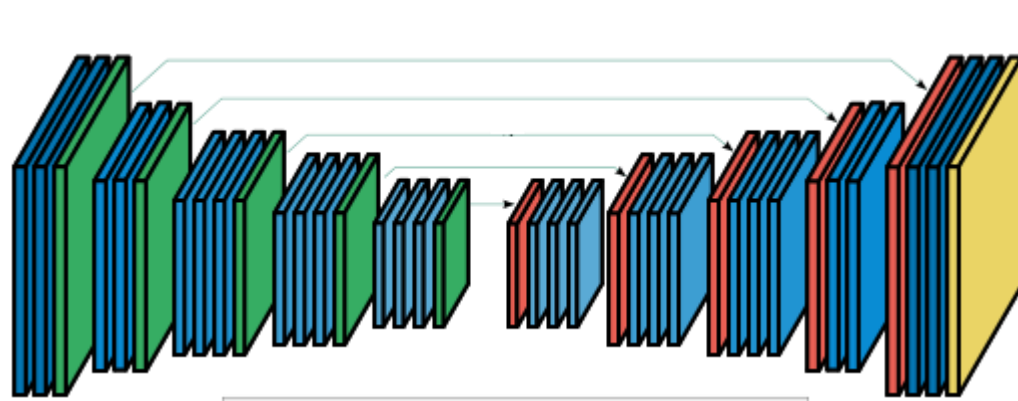
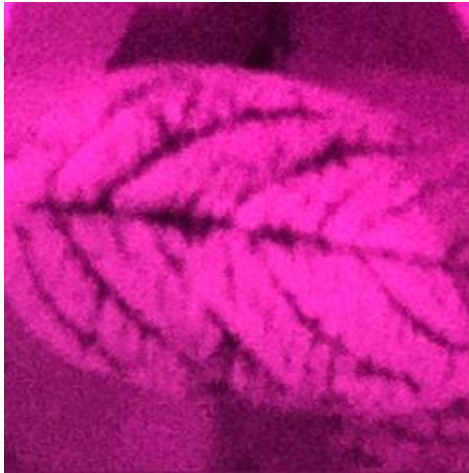
# Segmentation by neural networks

- Segmentation of apple scab : localization of scab pixels on an image.
- Done here by Convolutional Neural Networks (SegNet).



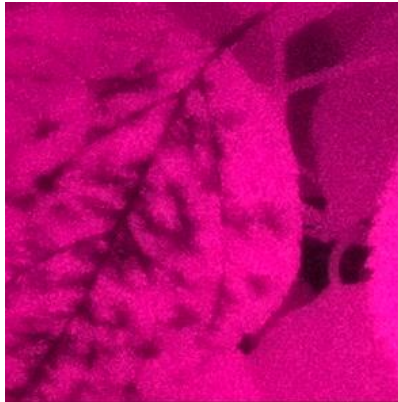
# Segmentation by neural networks

- Segmentation of apple scab : localization of scab pixels on an image.
- Done here by Convolutional Neural Networks (SegNet).



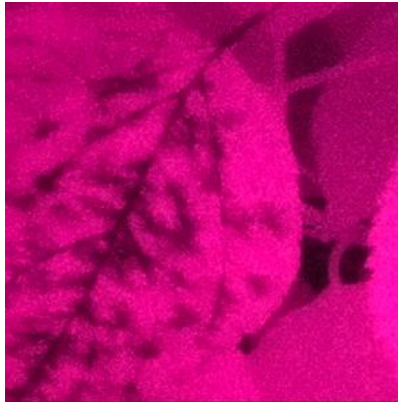
# Annotation is costly

- Annotation for segmentation is done pixelwise.



# Annotation is costly

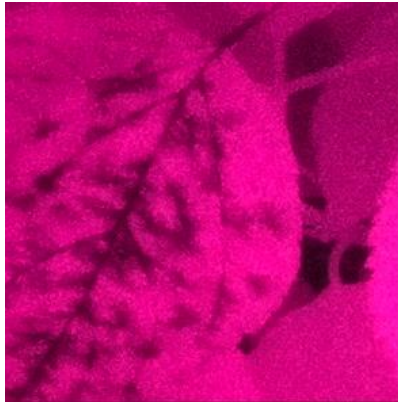
- Annotation for segmentation is done pixelwise.
- Very costly, and needs an agronomic expert.





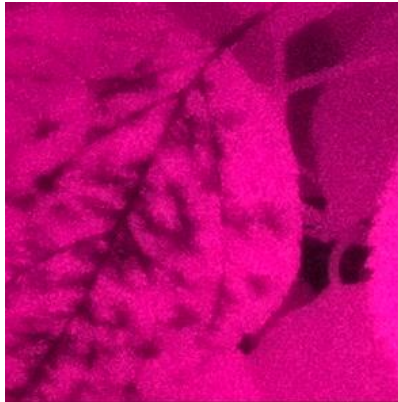
# Annotation is costly

- Annotation for segmentation is done pixelwise.
- Very costly, and needs an agronomic expert.
- >> training databases are usually quite small.



# Annotation is costly

- Annotation for segmentation is done pixelwise.
- Very costly, and needs an agronomic expert.
- >> training databases are usually quite small.  
Our database is 10 images, which we tile in 887 sub-images.



# Simulating annotated data

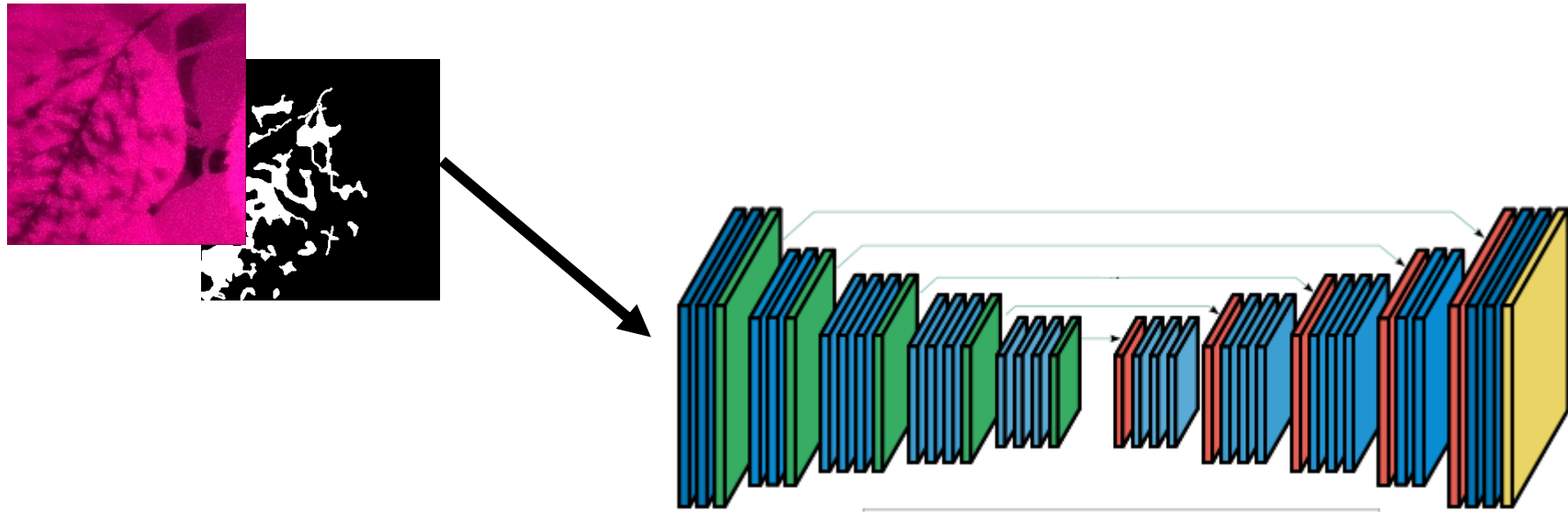
- What if we could simulate already annotated data from real annotated data ?

# Simulating annotated data

- What if we could simulate already annotated data from real annotated data ?
- Augment dataset without having to annotate.

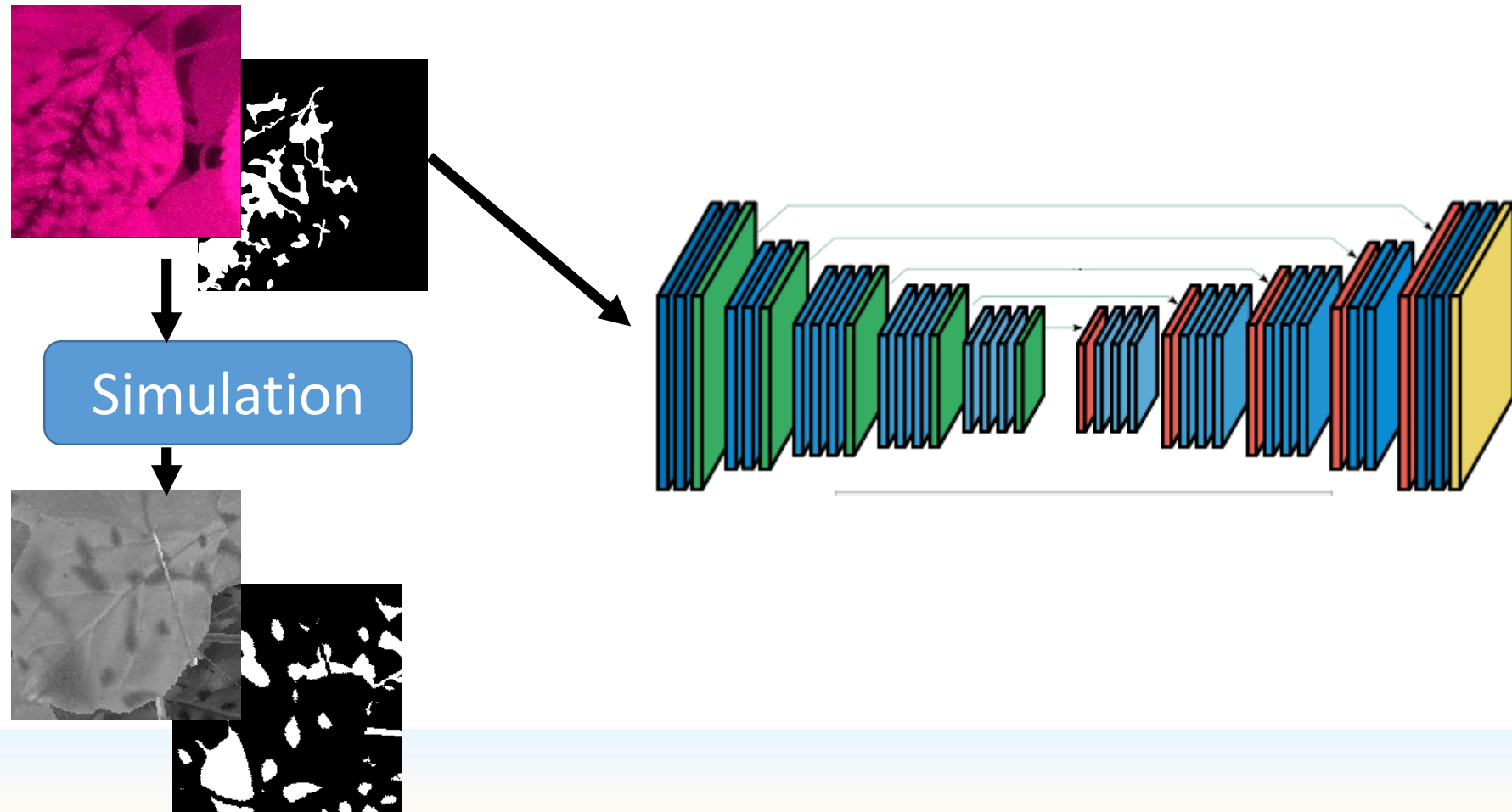
# Simulating annotated data

- What if we could simulate already annotated data from real annotated data ?
- Augment dataset without having to annotate >> help training.



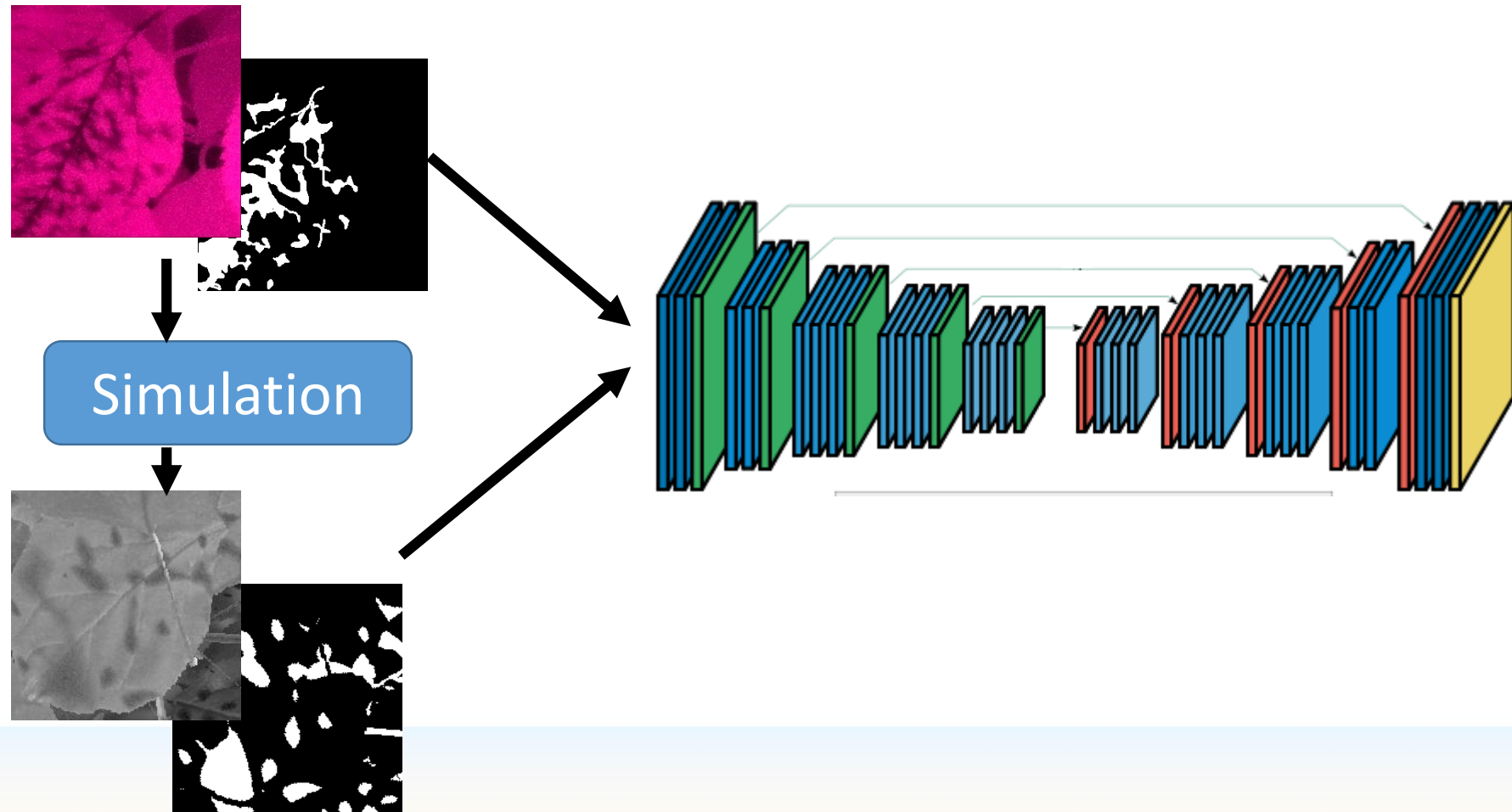
# Simulating annotated data

- What if we could simulate already annotated data from real annotated data ?
- Augment dataset without having to annotate >> help training.



# Simulating annotated data

- What if we could simulate already annotated data from real annotated data ?
- Augment dataset without having to annotate >> help training.



# Simulator : goal





# Apple scab simulator

- Build apple plant scenes from isolated leaves and information of real images.

Leaf images



# Apple scab simulator

- Build apple plant scenes from isolated leaves and information of real images.

Real images



Leaf images



# Apple scab simulator

- Build apple plant scenes from isolated leaves and information of real images.

Real images



White noise



Leaf images



# Apple scab simulator

- Build apple plant scenes from isolated leaves and information of real images.

Real images



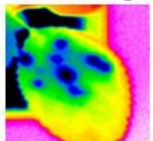
White noise



Leaf images

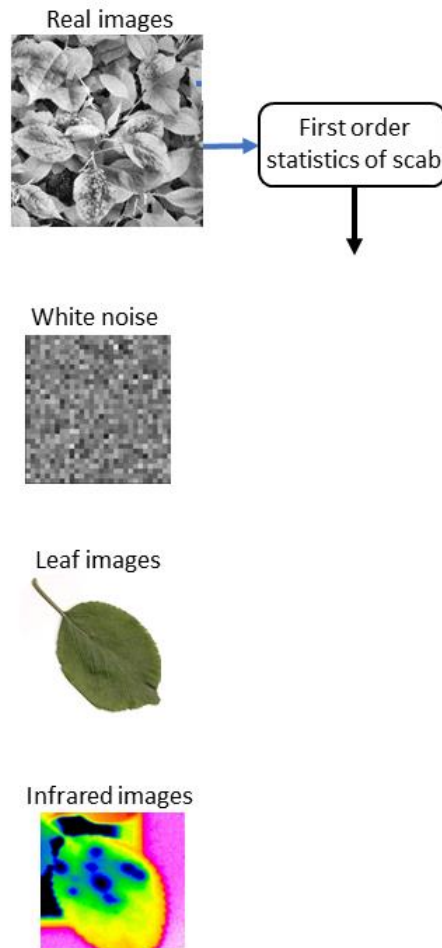


Infrared images



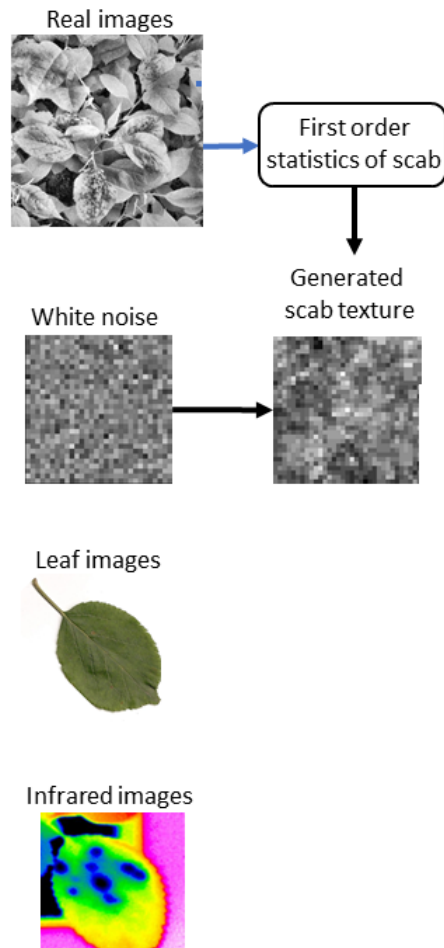
# Apple scab simulator

- Build apple plant scenes from isolated leaves and information of real images.



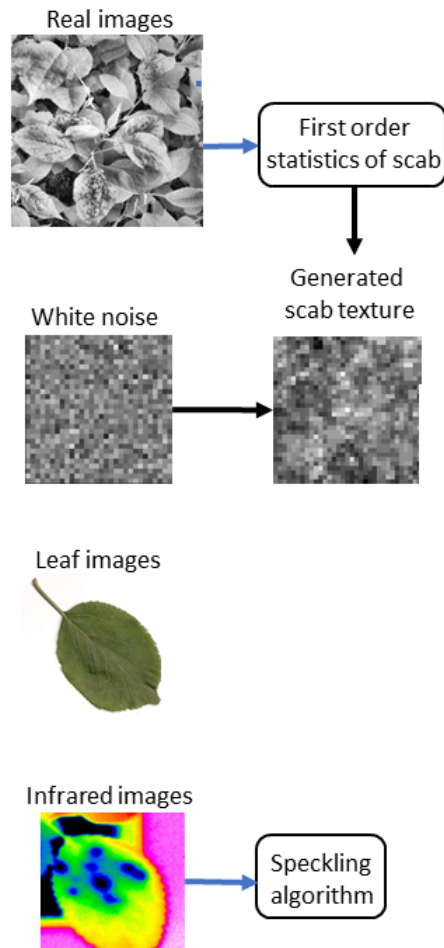
# Apple scab simulator

- Build apple plant scenes from isolated leaves and information of real images.



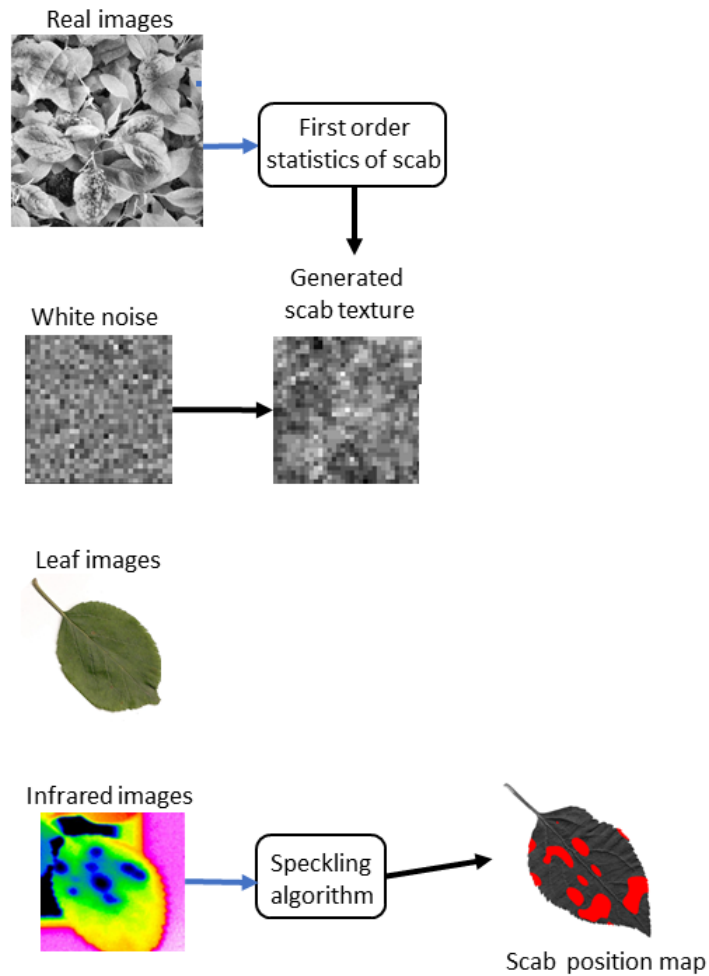
# Apple scab simulator

- Build apple plant scenes from isolated leaves and information of real images.



# Apple scab simulator

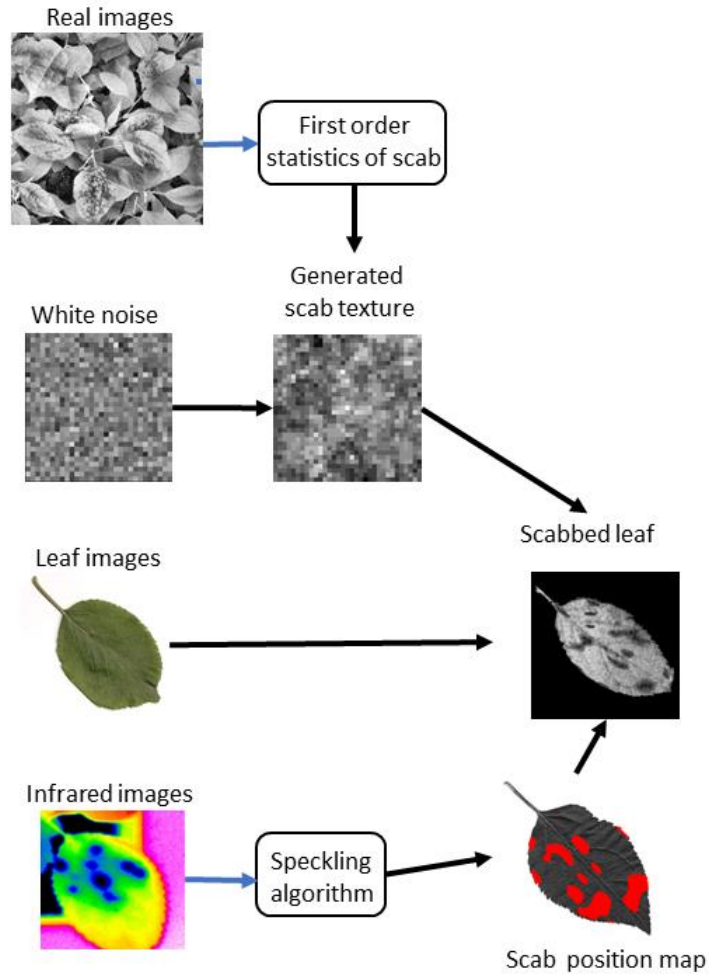
- Build apple plant scenes from isolated leaves and information of real images.





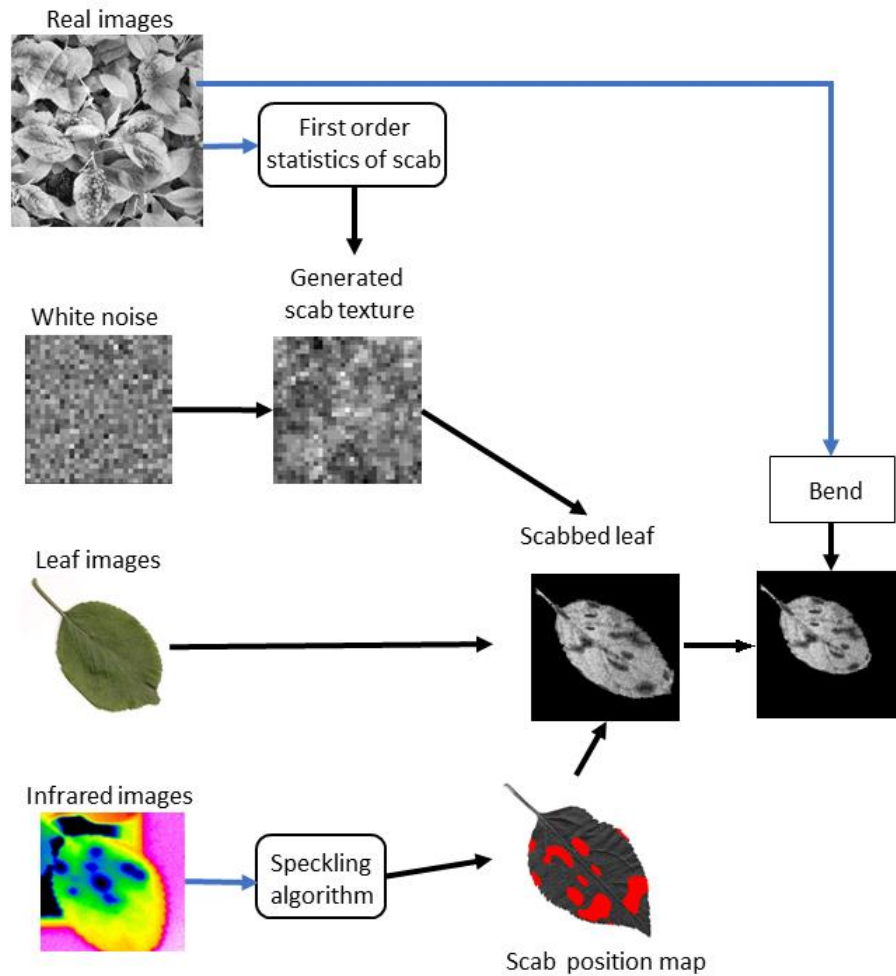
# Apple scab simulator

- Build apple plant scenes from isolated leaves and information of real images.



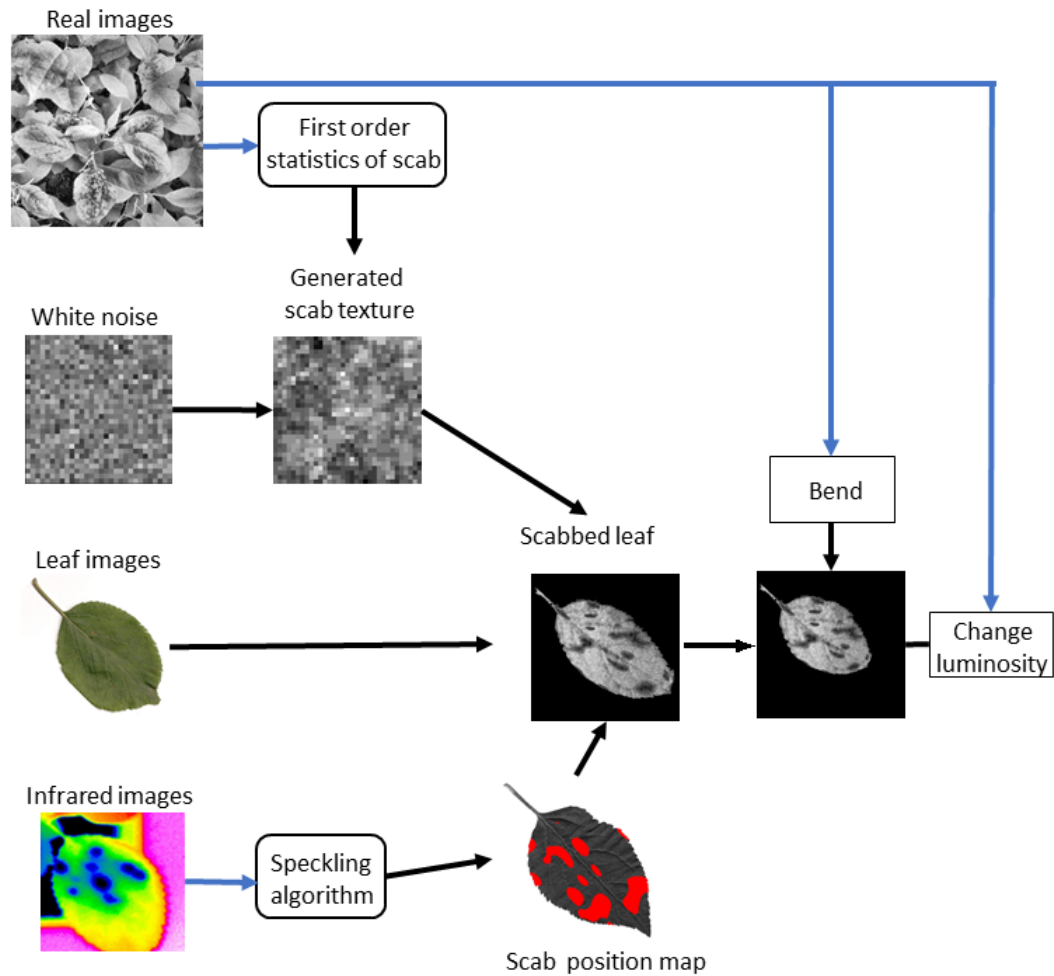
# Apple scab simulator

- Build apple plant scenes from isolated leaves and information of real images.



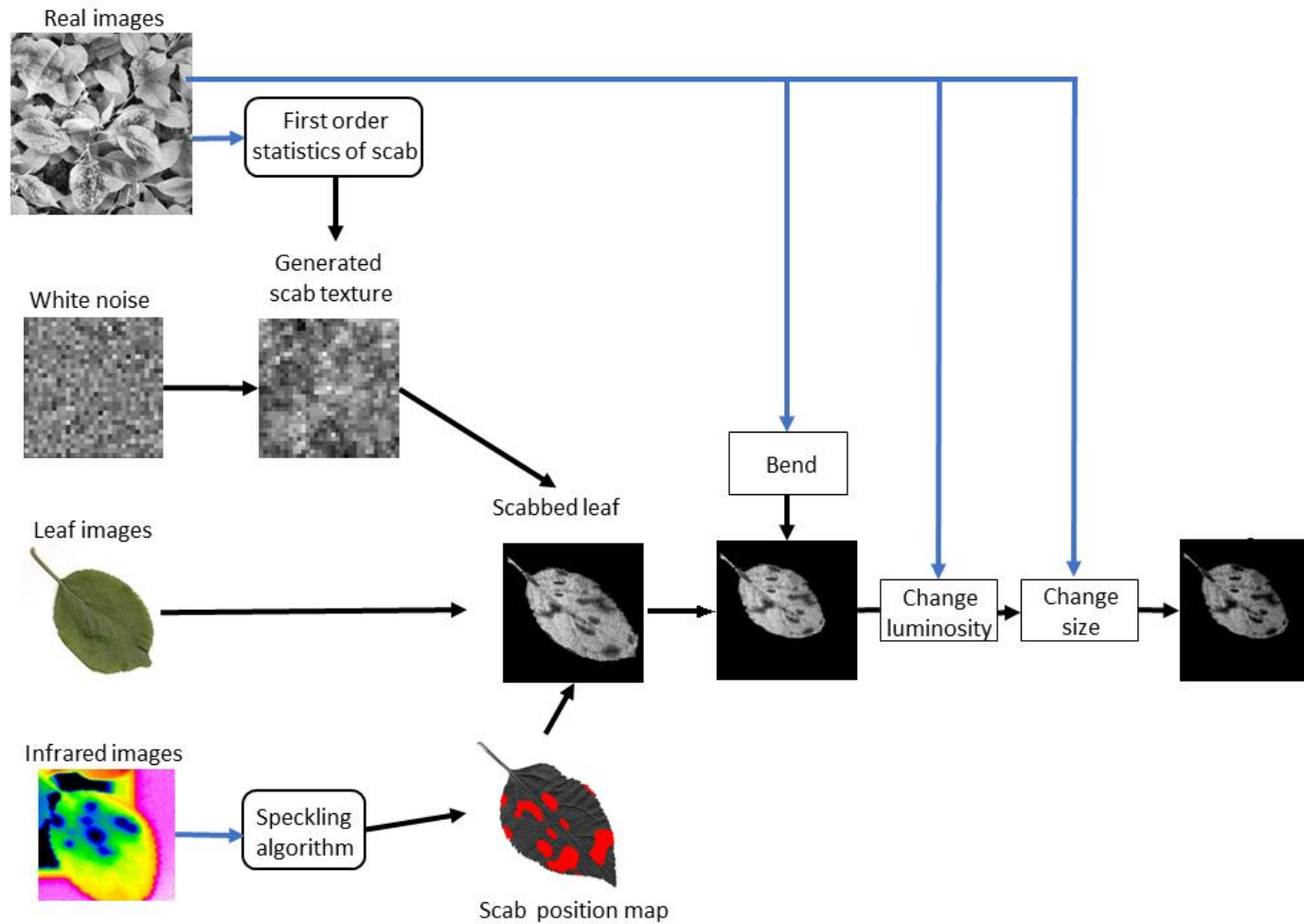
# Apple scab simulator

- Build apple plant scenes from isolated leaves and information of real images.



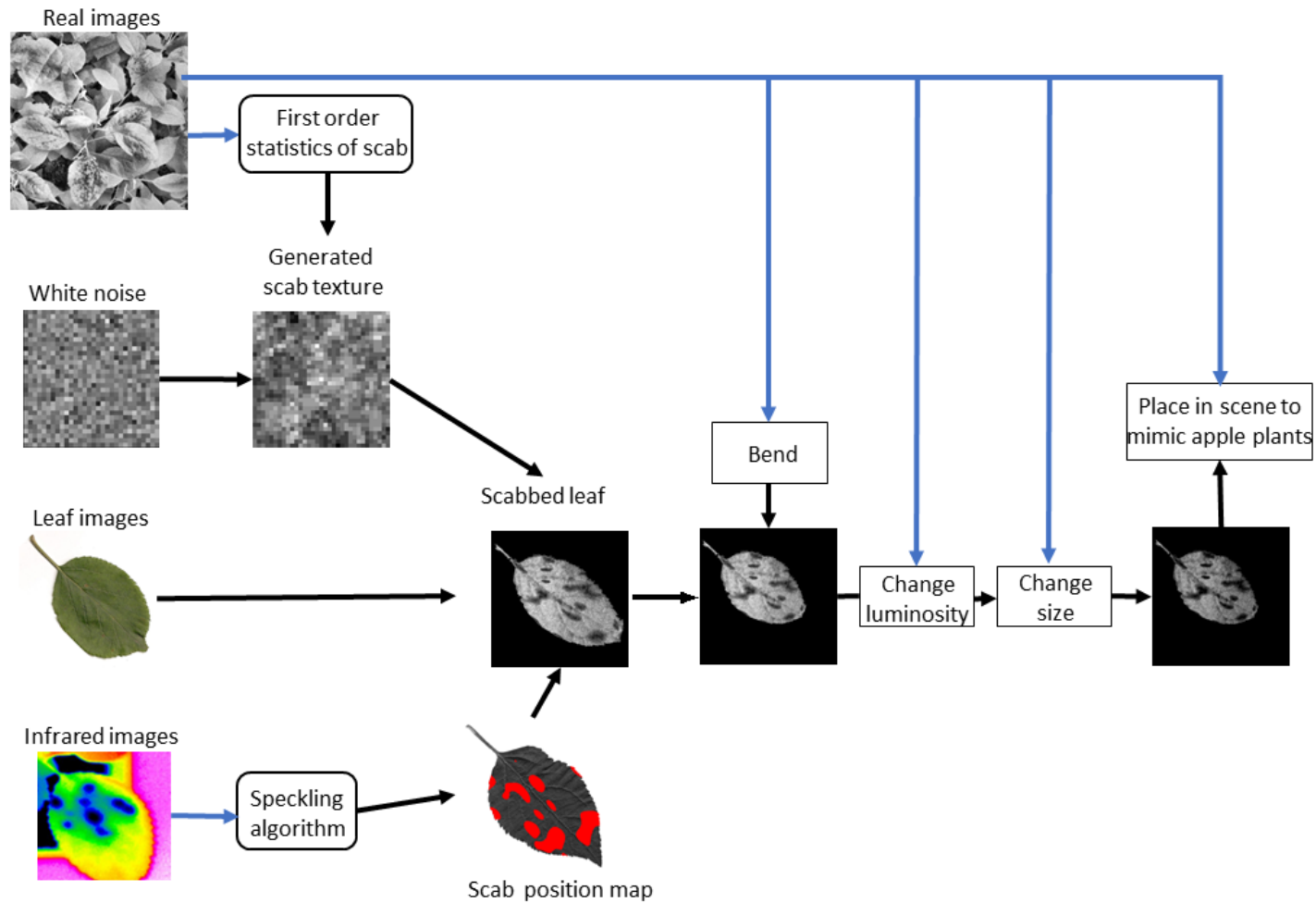
# Apple scab simulator

- Build apple plant scenes from isolated leaves and information of real images.



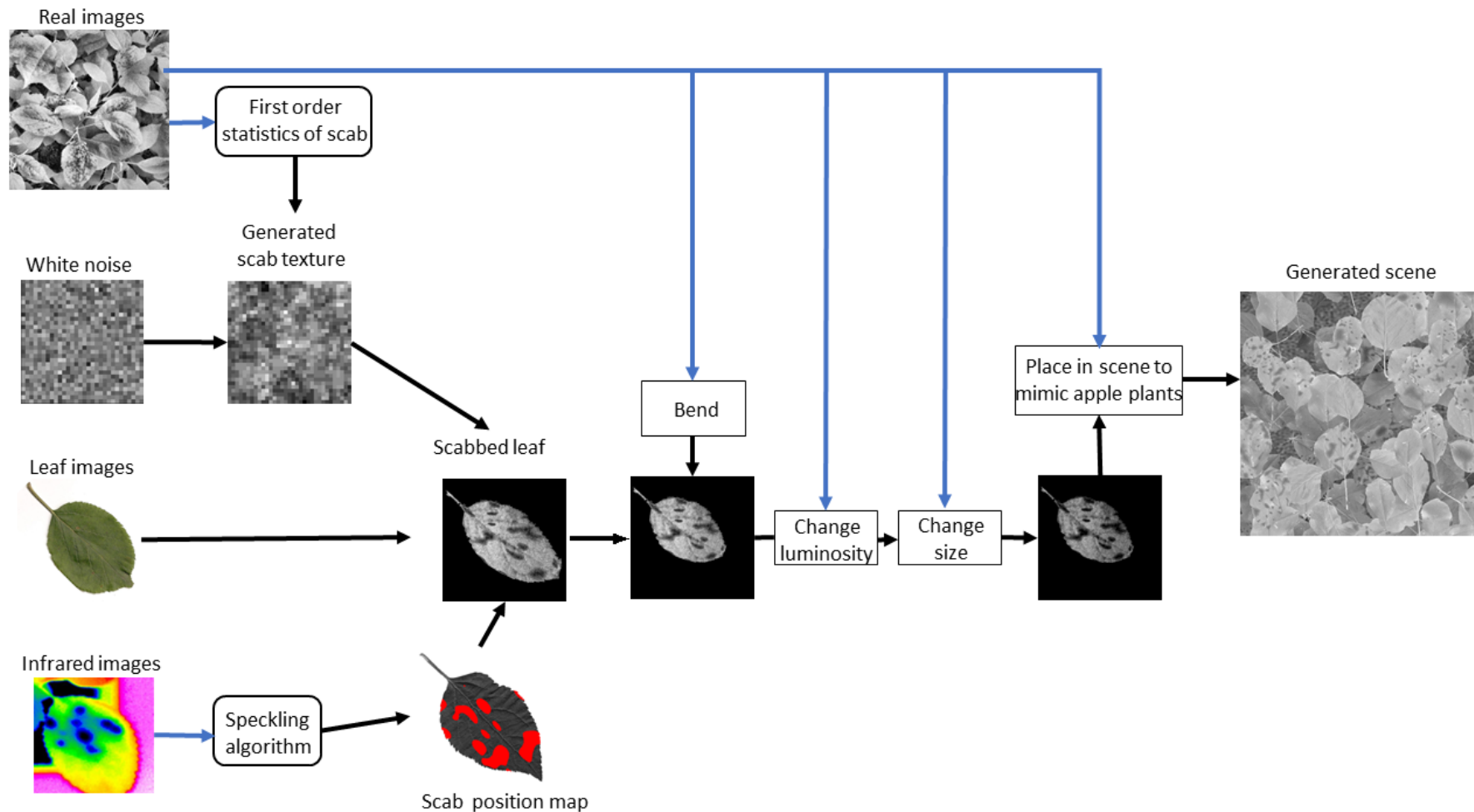
# Apple scab simulator

- Build apple plant scenes from isolated leaves and information of real images.



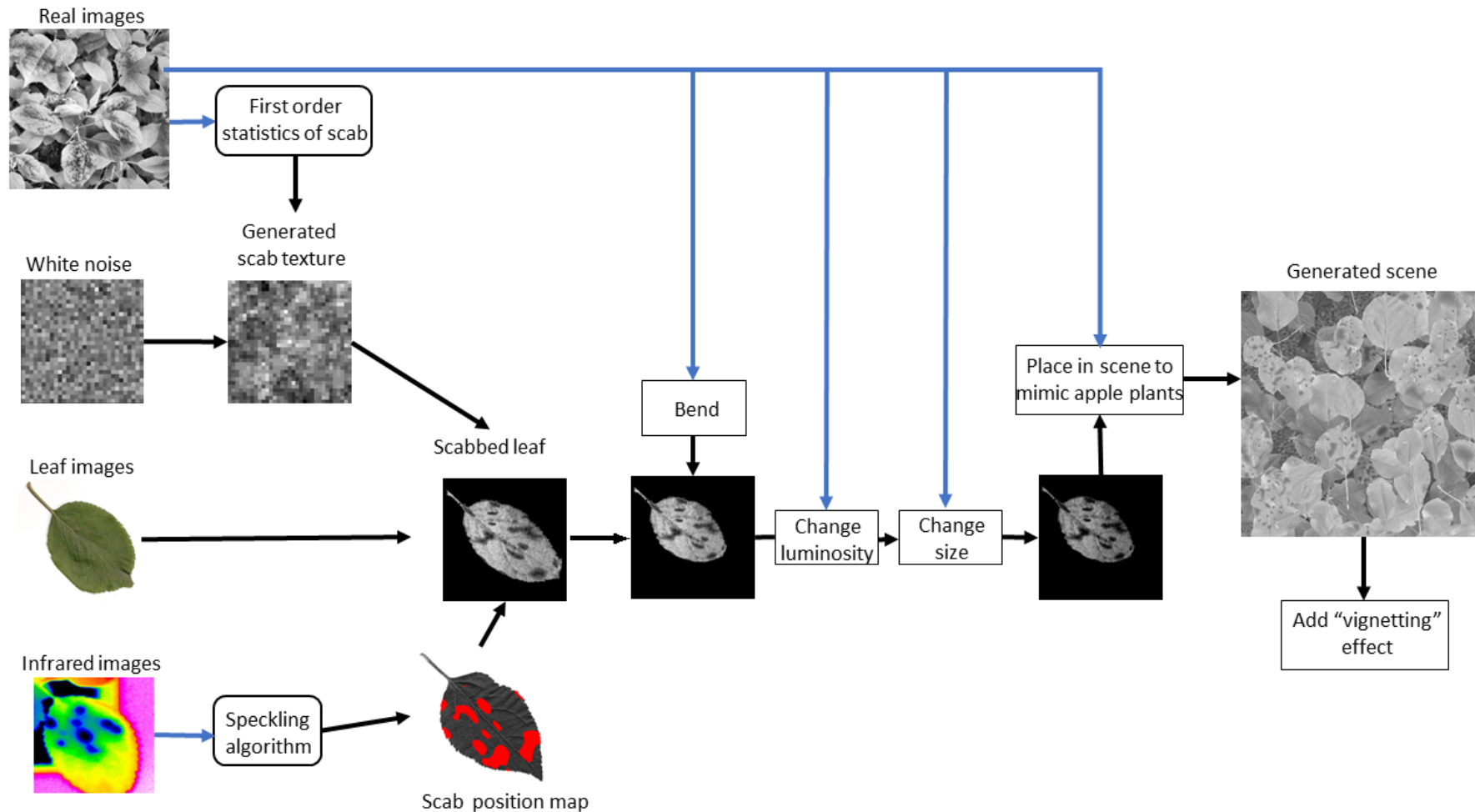
# Apple scab simulator

- Build apple plant scenes from isolated leaves and information of real images.



# Apple scab simulator

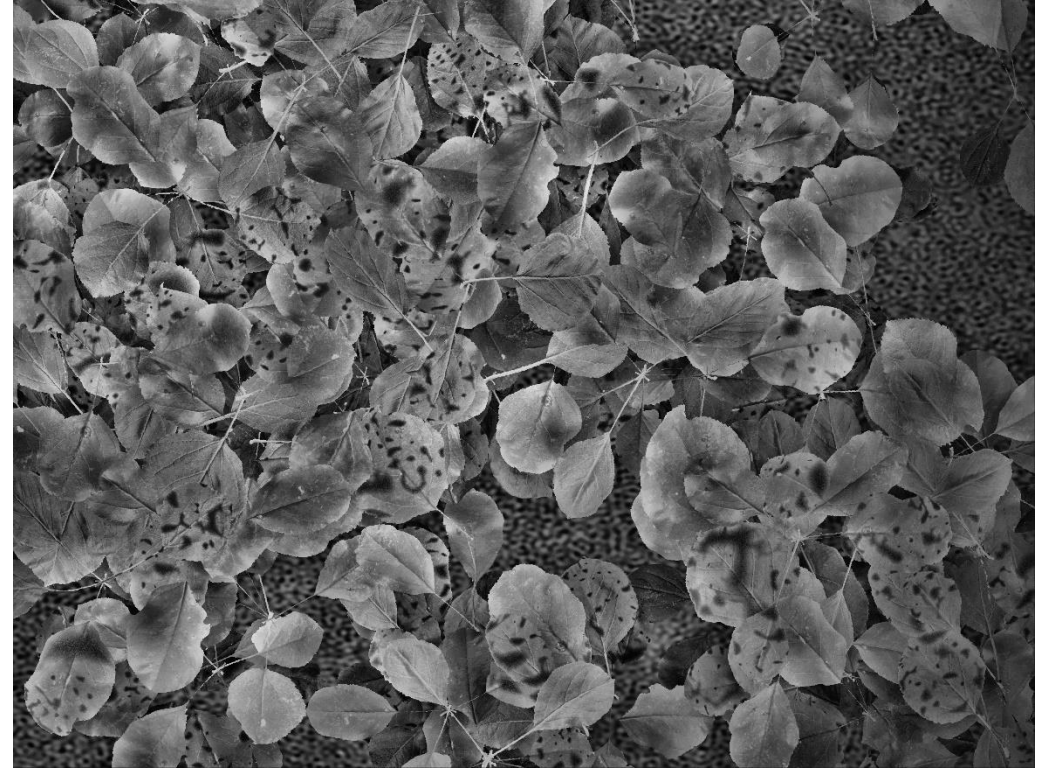
- Build apple plant scenes from isolated leaves and information of real images.



# (Visual) results



Real



Simulated

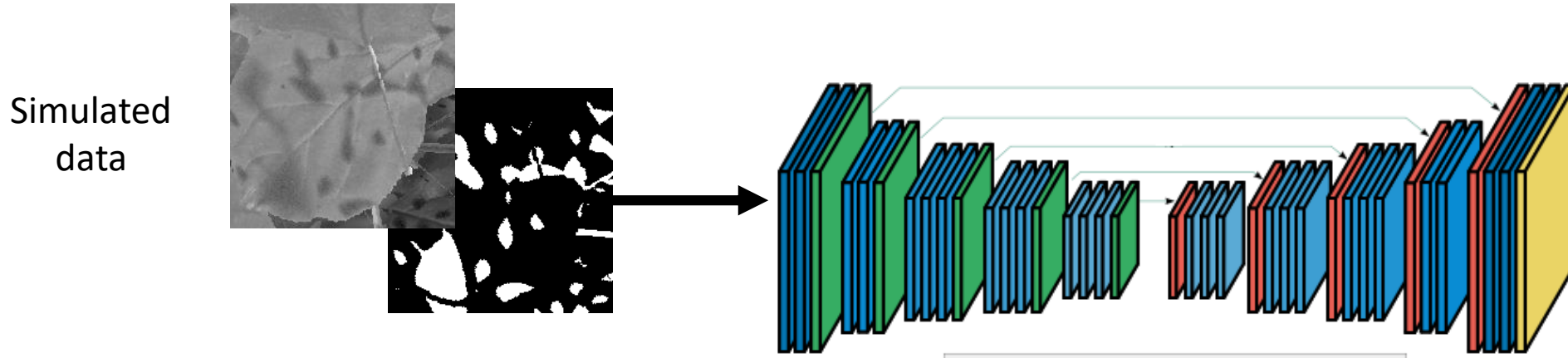


# How to use simulated data ?

We'll use simulated data as pretraining.

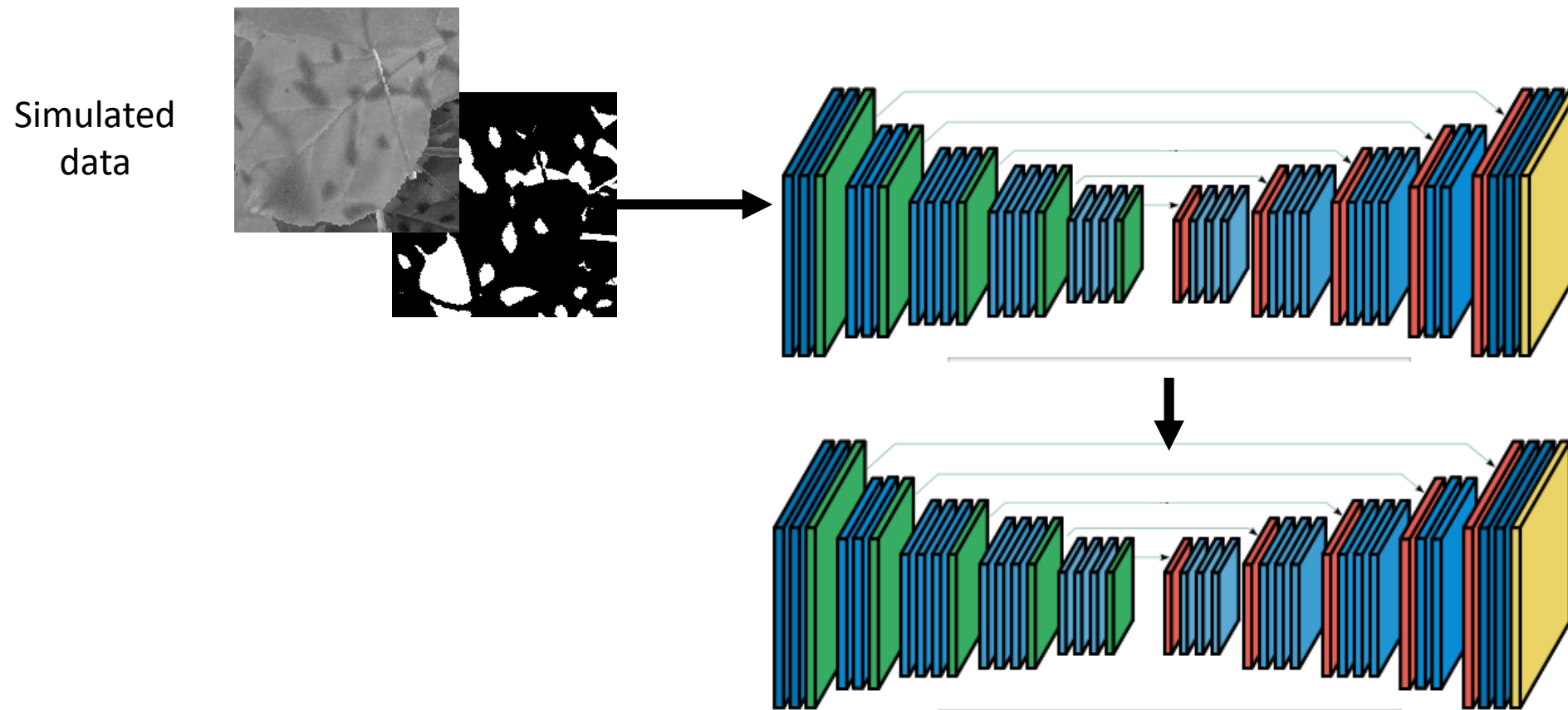
# How to use simulated data ?

We'll use simulated data as pretraining.



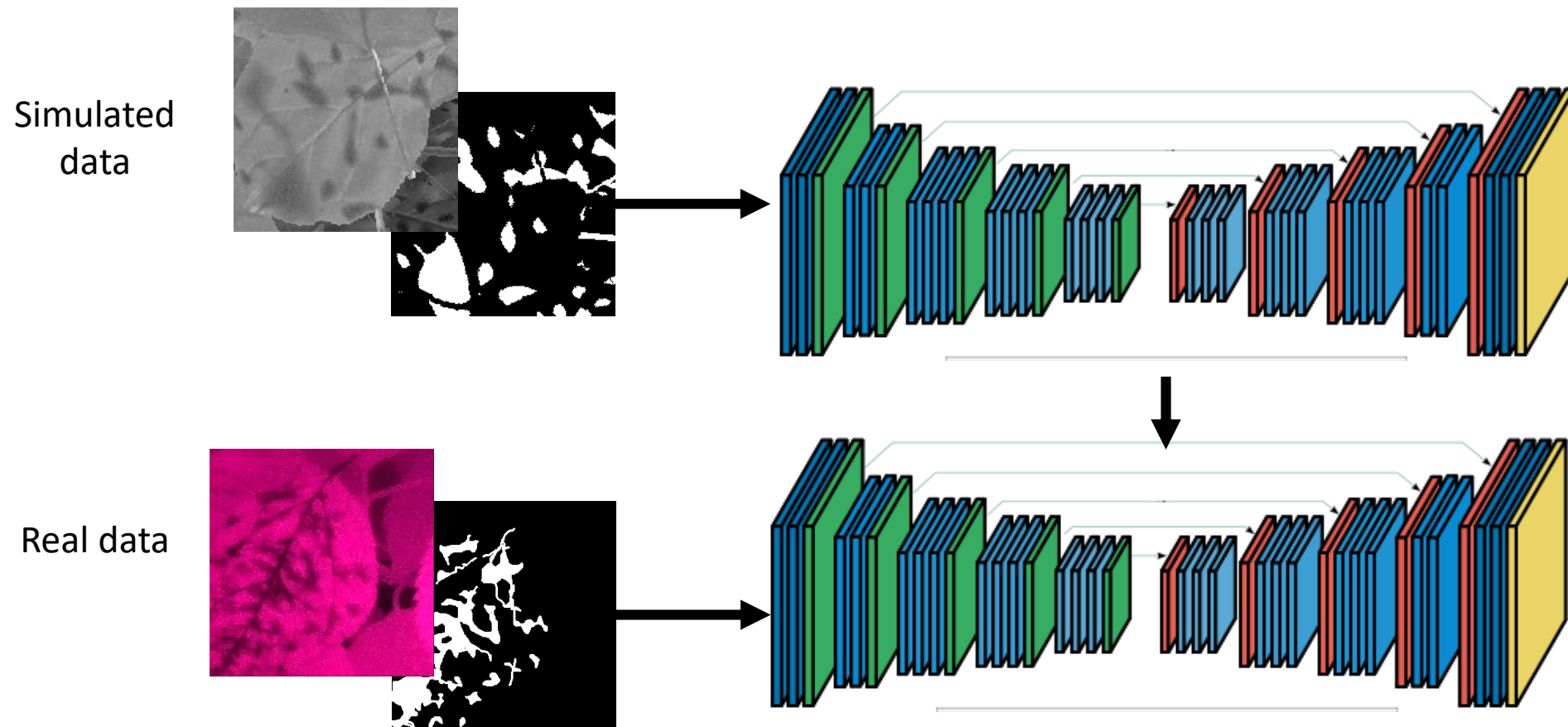
# How to use simulated data ?

We'll use simulated data as pretraining.



# How to use simulated data ?

We'll use simulated data as pretraining.



# Results

Training was done on train set until convergence was reached on validation set.  
Score was then computed on test set.

# Results

Training was done on train set until convergence was reached on validation set.  
Score was then computed on test set.

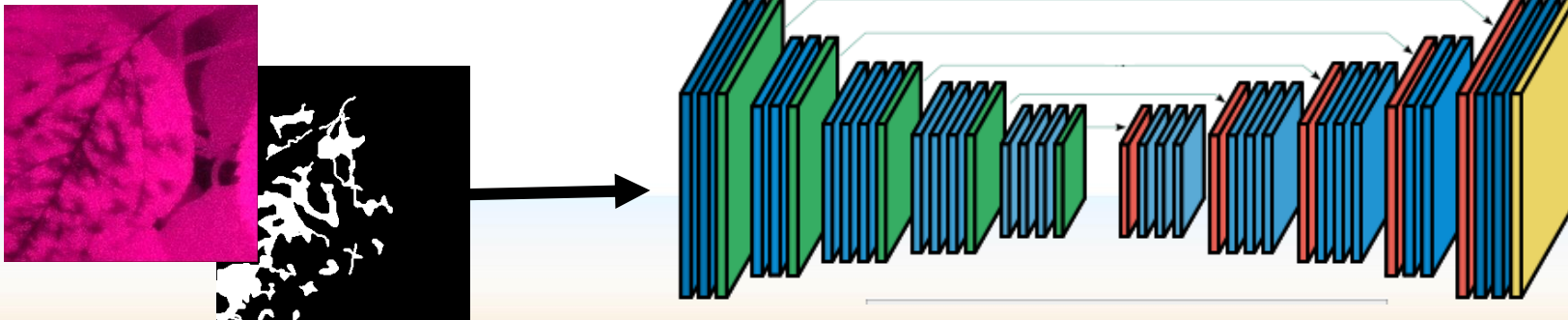
Scoring used was F1 score =  $2 \frac{\textit{precision} \cdot \textit{recall}}{\textit{precision} + \textit{recall}} \in [0,1]$

# Results

Training was done on train set until convergence was reached on validation set.  
Score was then computed on test set.

Scoring used was F1 score =  $2 \frac{\textit{precision} \cdot \textit{recall}}{\textit{precision} + \textit{recall}} \in [0,1]$

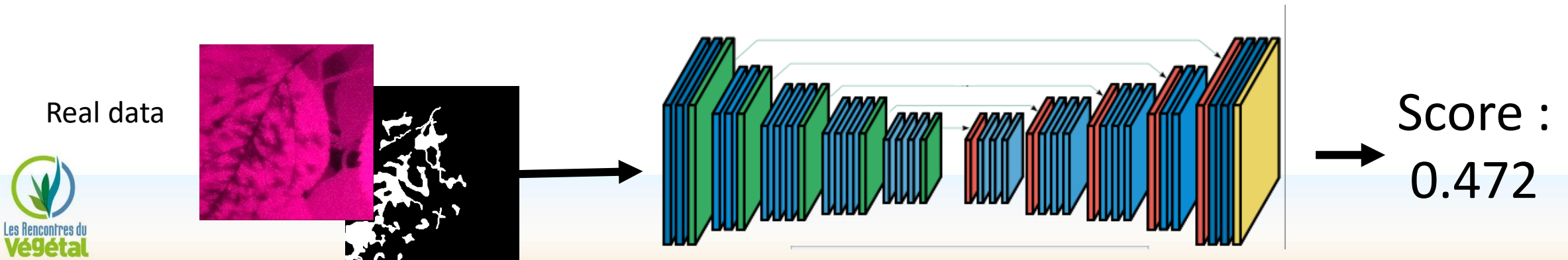
Real data



# Results

Training was done on train set until convergence was reached on validation set.  
Score was then computed on test set.

Scoring used was F1 score =  $2 \frac{\textit{precision} \cdot \textit{recall}}{\textit{precision} + \textit{recall}} \in [0,1]$

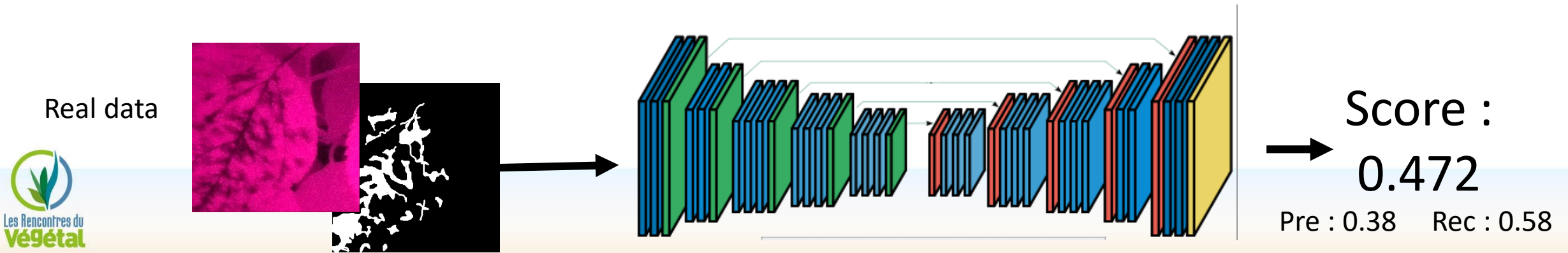




# Results

Training was done on train set until convergence was reached on validation set.  
Score was then computed on test set.

Scoring used was F1 score =  $2 \frac{\textit{precision} \cdot \textit{recall}}{\textit{precision} + \textit{recall}} \in [0,1]$



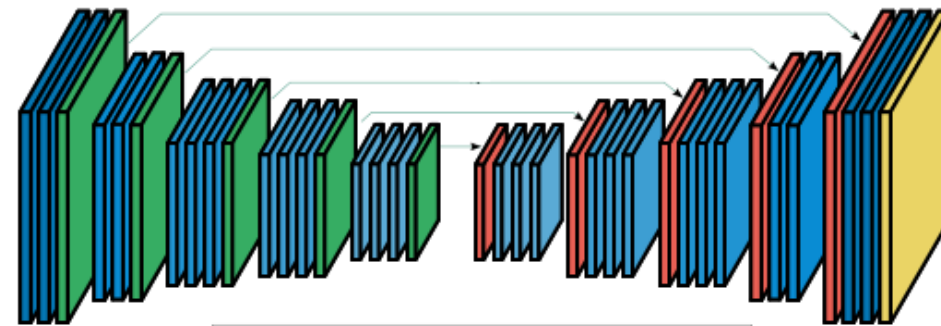
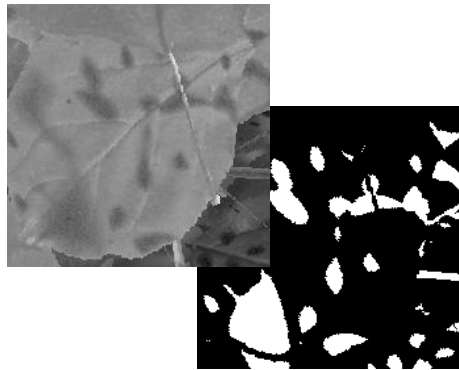
# Results

Training was done on train set until convergence was reached on validation set.

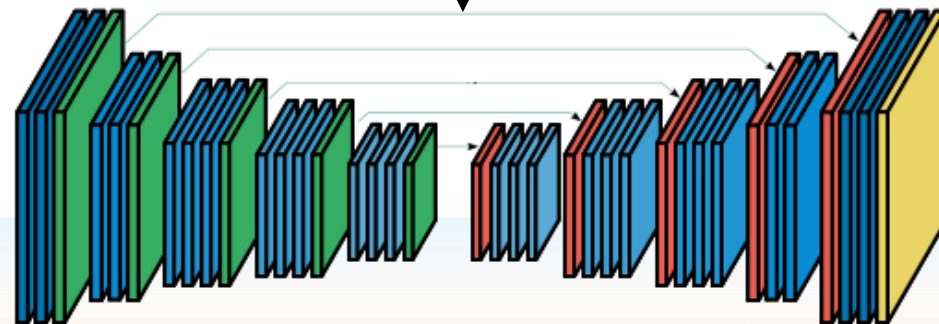
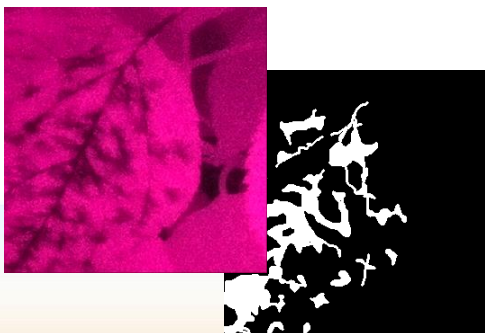
Score was then computed on test set.

Scoring used was F1 score =  $2 \frac{\textit{precision} \cdot \textit{recall}}{\textit{precision} + \textit{recall}} \in [0,1]$

Simulated data



Real data



Score :

0.597

Pre : 0.65 Rec : 0.55

# Ablation study

- What was useful in our simulator ?

# Ablation study

- What was useful in our simulator ?
- Generate images while “knocking out” some of the simulator’s functions.
  - Light variation
  - Size variation
  - Plant position ...

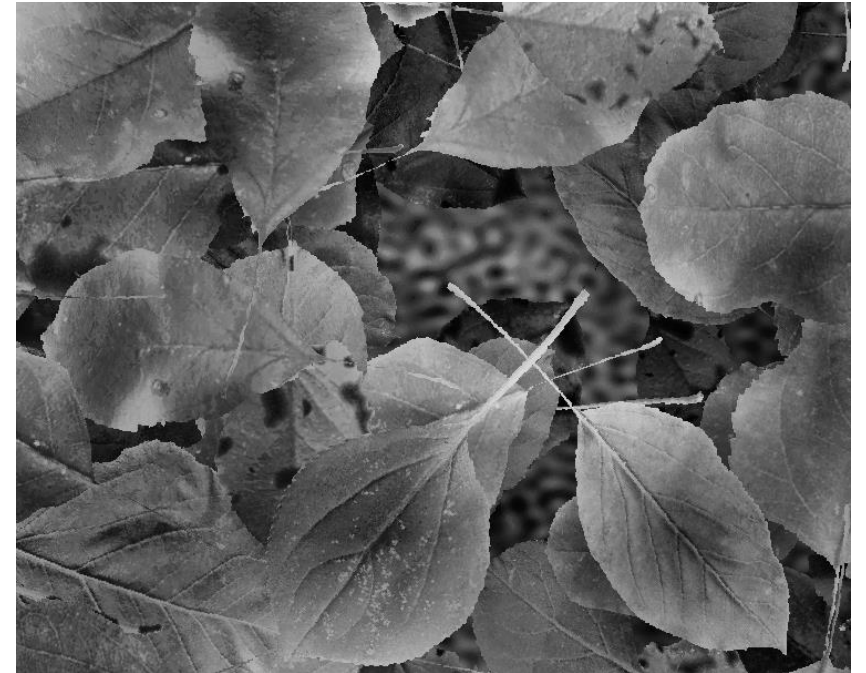
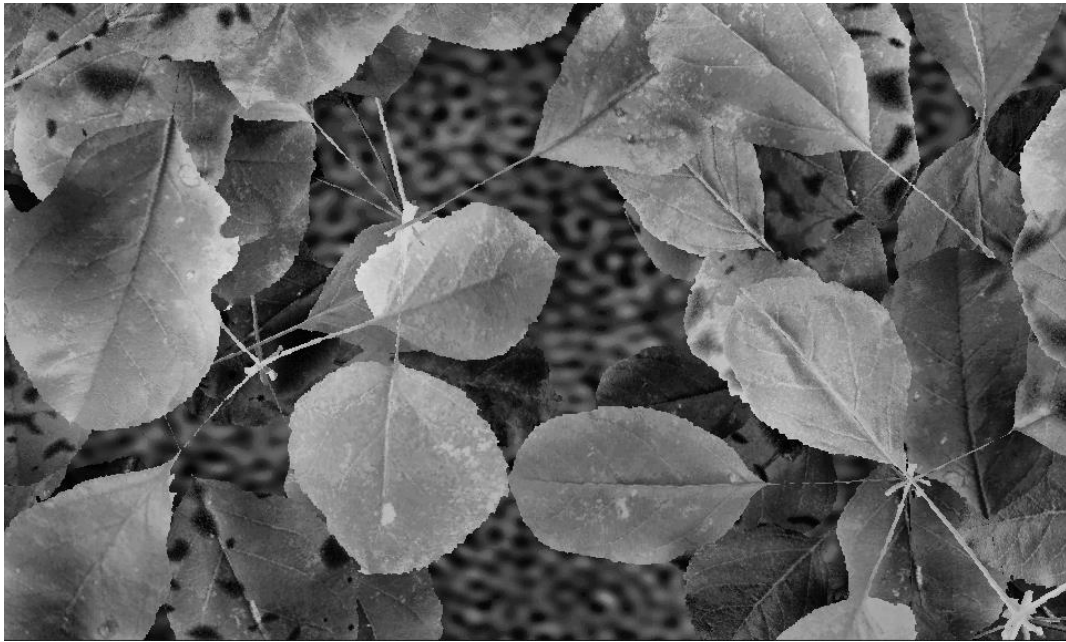
# Ablation study

- What was useful in our simulator ?
- Generate images while “knocking out” some of the simulator’s functions.
  - Light variation
  - Size variation
  - Plant position ...

Then pretrain with these new images, and compute score on real database.

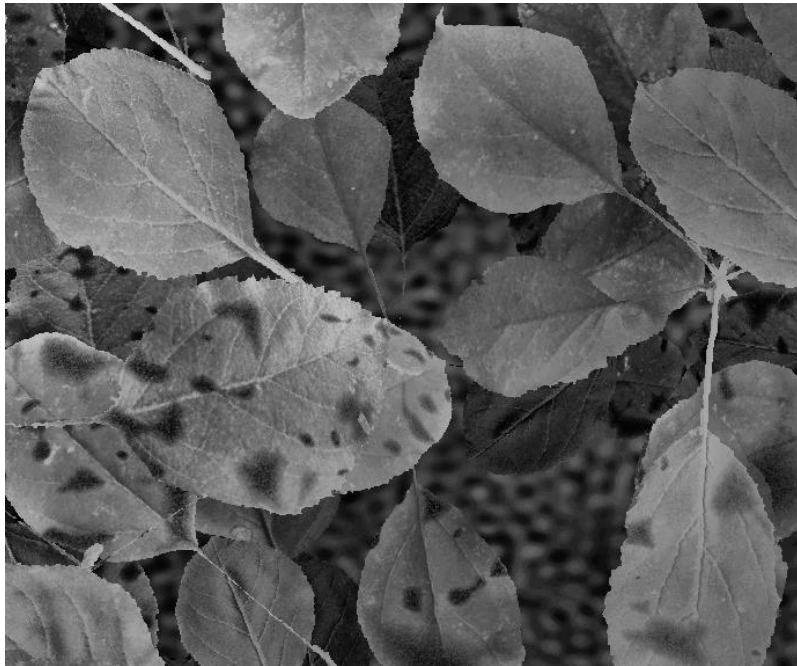
# Ablation study : examples

Taking out structure.



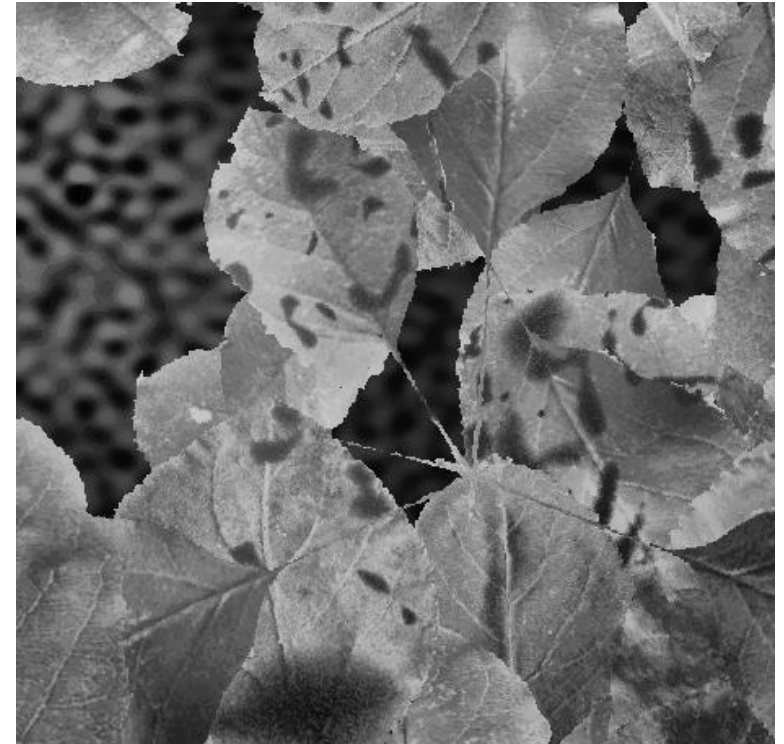
# Ablation study : examples

Taking out size variation.



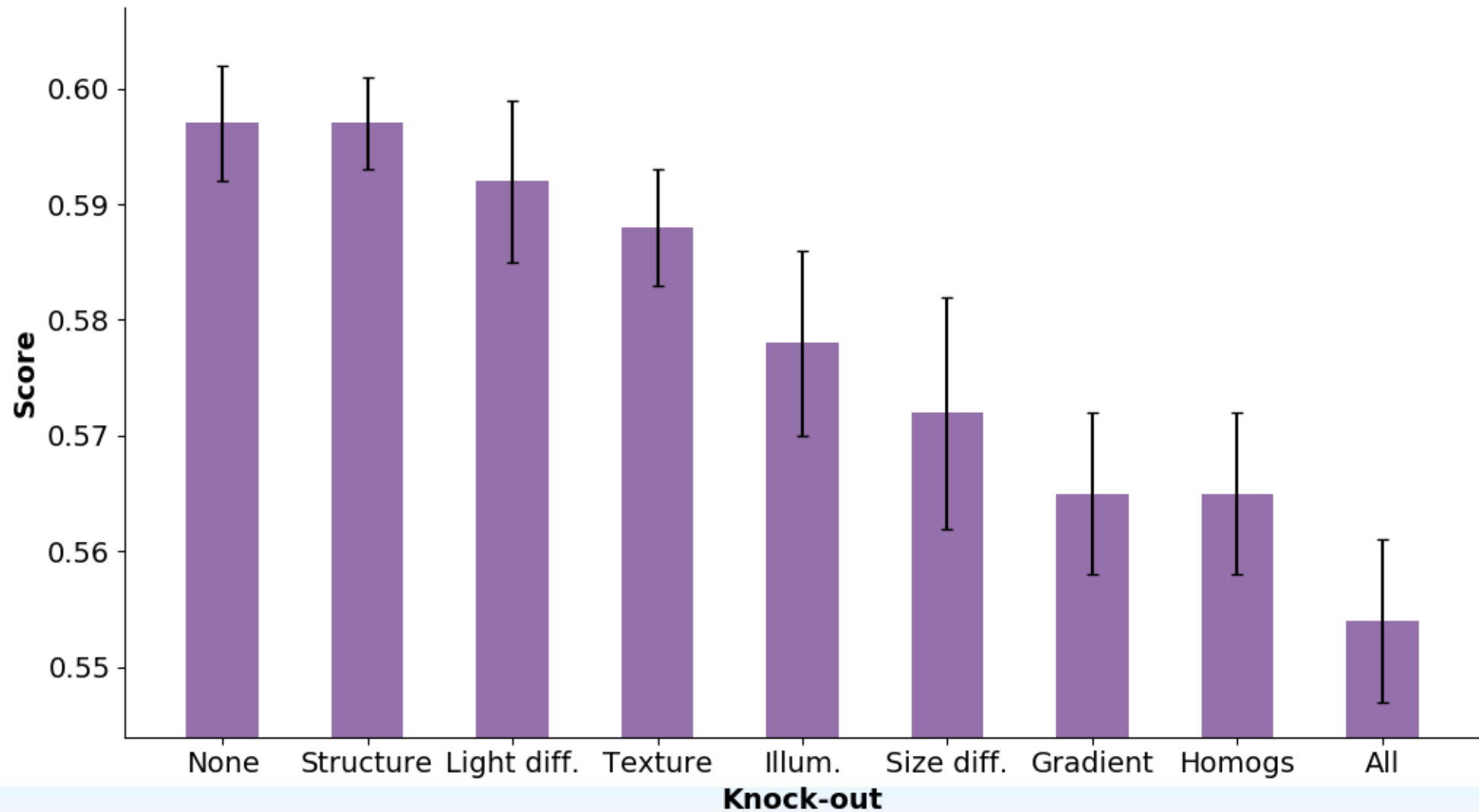
# Ablation study : examples

Taking out luminosity variation.

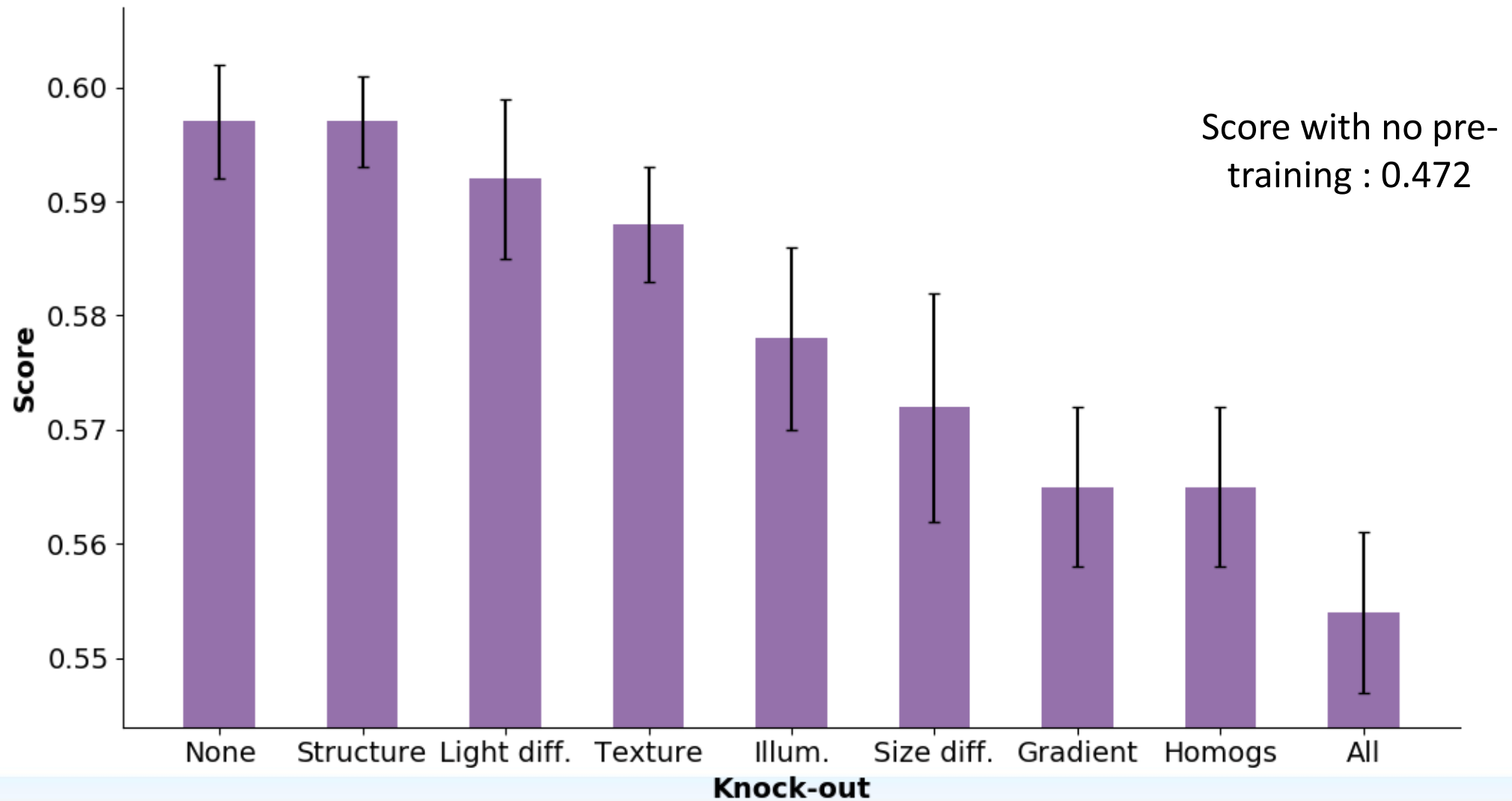




# Ablation study : results



# Ablation study : results



# Conclusions

- We've studied a **difficult case of image segmentation** : apple scab disease on plant leaves in IR.

# Conclusions

- We've studied a difficult case of image segmentation : apple scab disease on plant leaves in IR.
- We've successfully **augmented the small database by a simulator** which we've used to pre-train a CNN.

# Conclusions

- We've studied a difficult case of image segmentation : apple scab disease on plant leaves in IR.
- We've successfully augmented the small database by a simulator which we've used to pre-train a CNN.
- F1 score on test set **was increased by 12%**.

# Perspectives

- Compare this kind of augmentation with other kinds of augmentations.
- Compare pre-training vs directly adding generated images into database.
- Apply same kind of generator to other variety of plant disease.