



HAL
open science

Reconstruction of partially sampled multi-band images - Application to STEM-EELS Imaging

Etienne Monier, Thomas Oberlin, Nathalie Brun, Marcel Tencé, Maria de Frutos, Nicolas Dobigeon

► **To cite this version:**

Etienne Monier, Thomas Oberlin, Nathalie Brun, Marcel Tencé, Maria de Frutos, et al.. Reconstruction of partially sampled multi-band images - Application to STEM-EELS Imaging. IEEE Transactions on Computational Imaging, 2018, 4 (4), pp.585-598. 10.1109/TCI.2018.2866961 . hal-02181994

HAL Id: hal-02181994

<https://hal.science/hal-02181994>

Submitted on 15 Jul 2019

HAL is a multi-disciplinary open access archive for the deposit and dissemination of scientific research documents, whether they are published or not. The documents may come from teaching and research institutions in France or abroad, or from public or private research centers.

L'archive ouverte pluridisciplinaire **HAL**, est destinée au dépôt et à la diffusion de documents scientifiques de niveau recherche, publiés ou non, émanant des établissements d'enseignement et de recherche français ou étrangers, des laboratoires publics ou privés.



Open Archive Toulouse Archive Ouverte

OATAO is an open access repository that collects the work of Toulouse researchers and makes it freely available over the web where possible

This is an author's version published in:

<http://oatao.univ-toulouse.fr/22523>

Official URL

DOI : <https://doi.org/10.1109/TCI.2018.2866961>

To cite this version: Monier, Etienne and Oberlin, Thomas and Brun, Nathalie and Tencé, Marcel and De Frutos, Maria and Dobigeon, Nicolas *Reconstruction of partially sampled multi-band images - Application to EELS microscopy*. (2018) IEEE Transactions on Computational Imaging, 4 (4). 585-598. ISSN 2333-9403

Any correspondence concerning this service should be sent to the repository administrator: tech-oatao@listes-diff.inp-toulouse.fr

Reconstruction of Partially Sampled Multiband Images—Application to STEM-EELS Imaging

Étienne Monier , *Student Member, IEEE*, Thomas Oberlin , *Member, IEEE*, Nathalie Brun , Marcel Tencé, Marta de Frutos, and Nicolas Dobigeon , *Senior Member, IEEE*

Abstract—Electron microscopy has shown to be a very powerful tool to map the chemical nature of samples at various scales down to atomic resolution. However, many samples can not be analyzed with an acceptable signal-to-noise ratio because of the radiation damage induced by the electron beam. This is particularly crucial for electron energy loss spectroscopy (EELS), which acquires spectral-spatial data and requires high beam intensity. Since scanning transmission electron microscopes (STEM) are able to acquire data cubes by scanning the electron probe over the sample and recording a spectrum for each spatial position, it is possible to design the scan pattern and to sample only specific pixels. As a consequence, partial acquisition schemes are now conceivable, provided a reconstruction of the full data cube is conducted as a postprocessing step. This paper proposes two reconstruction algorithms for multiband images acquired by STEM-EELS which exploits the spectral structure and the spatial smoothness of the image. The performance of the proposed schemes is illustrated thanks to experiments conducted on a realistic phantom dataset as well as real EELS spectrum-images.

Index Terms—Electron energy loss spectroscopy (EELS), scanning transmission electron microscope (STEM), spectrum-image, multi-band imaging, image reconstruction, partial sampling, inpainting.

I. INTRODUCTION

IN AN electron microscope, an electron beam is used as the illumination source, which provides a spatial resolution far superior to that of an optical microscope (nowadays down to 0.1nm). The present paper considers the scanning transmission electron microscope (STEM), where the beam is focused as a probe which is scanned over the sample area of interest. STEM is well adapted to the simultaneous acquisition of a variety of signals, both mono and multi-channels, for each probe position.

This work was supported by the Centre National de la Recherche Scientifique, France, through the Imag'in ARSIS project.

This paper was presented in part at the IEEE WHISPERS 2018, Amsterdam, The Netherlands [1]. The associate editor coordinating the review of this manuscript and approving it for publication was Dr. Kees Joost Batenburg. (*Corresponding author: Étienne Monier.*)

E. Monier, T. Oberlin, and N. Dobigeon are with the IRIT/INP-ENSEEIH, University of Toulouse Toulouse 31071, France (e-mail: etienne.monier@enseeiht.fr; thomas.oberlin@enseeiht.fr; nicolas.dobigeon@enseeiht.fr).

N. Brun, M. Tencé, and M. de Frutos are with the Laboratoire de Physique des Solides, CNRS UMR 8502, University of Paris-Sud, Orsay 91400, France, and also with the University of Paris-Saclay, Orsay 91405, France (e-mail: nathalie.brun@u-psud.fr; marcel.tence@u-psud.fr; marta.de-frutos@u-psud.fr).

Among the most commonly collected signals are cathodoluminescence, high-angle annular dark field (HAADF) and electron-energy loss spectroscopy (EELS) [2]. However, a classical problem encountered is that the electron beam can induce sample damage, a phenomenon particularly limiting for sensitive materials [3], e.g., organic materials or molecular structures. Different mechanisms leading to an alteration in the composition and/or structure can be involved depending on the sample composition and the incident electron energy, and the strategy for minimizing damage has to be adapted to each case. Standard acquisition schemes operate sequentially, line-by-line, and thus concentrate electrons in contiguous areas. This scanning mode can accentuate the effects on the data of certain types of damage occurring over an area larger than the beam size: the signal at a given point is affected by the damage originating from the previous acquisitions. To overcome this, common practice is to reduce the electron dose (number of electrons per unit surface) by decreasing the incident beam current or the acquisition time per pixel, which significantly lowers the signal-to-noise ratio (SNR) and the overall image quality. To reduce the cumulative damage on successive pixels, another possibility would be to increase the distance between pixels, but in that case the use of a periodic sampling scheme leads to under-sampling of spatial information.

Recent works have addressed this issue and proposed random sampling schemes for reducing damage while keeping the best possible SNR and spatial resolution [4], [5]. These methods can also be advantageously used to limit the effect of sample drift by reducing the total acquisition time. Indeed, for a given total electron dose, one can either acquire all pixels at low SNR (small acquisition time per pixel), or *partially* sampling some specific pixels with a higher SNR (i.e., longer acquisition time per pixel). The last method has several advantages as it allows adaptive studies to be envisioned, such as a move detection by considering J successive acquisitions of $100/J\%$ of the pixels. Such a random sampling has been implemented on the STEM VG HB 501 microscope in the Laboratoire de Physique des Solides (LPS, Orsay, France). This particular acquisition pattern required the development of scan coils and blanking plates specific controls [6]. Moreover, it also requires computational reconstruction schemes to recover the full data from the partial measurements within a post-processing task.

Among them, the most common technique which aims at recovering the missing pixels in an image is referred to as inpainting. Numerous techniques have been proposed in the last

decade to reconstruct an original image with high accuracy from only partial information. More generally, a wide range of so-called ill-posed inverse problems have been intensively studied through the compressed sensing paradigm. Compressed sensing is a general framework which provides recovery algorithms along with theoretical guarantees for linear under-determined inverse problems, including partial sampling in some basis, or inpainting. The most common key assumptions are to assume that the data is sparse in an appropriate representation space and that the acquisition is random. As a consequence, such algorithms have been implemented in several applied fields such as MRI [7], ultrasonic imaging [8], astronomy [9] or tomography in microscopy [10]. This has been enabled by recent algorithmic advances that efficiently solved high-dimensional optimization problems involving possibly non-smooth or non-convex penalties. Without satisfying the compressed sensing assumptions that are often too restrictive, solving generic but high dimensional image processing problems such as completion [11], super-resolution [12] or fusion [13] has been shown to be computationally realizable.

In particular, the problem of imaging sensitive materials have been recently addressed thanks to partial acquisition schemes coupled with reconstruction methods. These approaches were based on dictionary learning, sparsity-based or low-rank regularization and applied in transmission electron microscopy (TEM) video [14], electron tomography [15] and nuclear magnetic resonance (NMR) [16]. Standard inpainting methods for 2D images are now well-documented and can be applied to two-dimensional HAADF images, for instance by minimizing the Sobolev norm or the total variation of the image (see for instance [17], [18]). Alternative regularizations include dictionary learning, proposed to solve the sensitive-material problem in HAADF acquisition [5], [19]–[21], leading to satisfactory results. However, in the case of EELS multi-band images (hereafter referred to as *spectrum-images*), the spatial-spectral structure of the data needs to be taken into account within the reconstruction process. Interestingly, EELS fast acquisition and reconstruction [22] has raised little interest compared to its hyperspectral counterpart for Earth observation and remote sensing [23]–[26].

This paper considers the reconstruction of EELS spectrum-images from partial acquisition. The proposed reconstruction follows the same lines as the above-referenced techniques, by casting the reconstruction into an inverse problem framework with appropriate regularizations. Compared with the previous works proposed in EELS microscopy, the proposed approach introduces a spatial regularization, chosen to promote smoothly varying images, *and* a spectral regularization to better take into account the nature of EELS data. More precisely, two variants of such a regularization are considered, leading to two different problem formulations. Section II briefly presents the microscopy material and data. The direct problem, its inverse counterpart and the proposed regularizations are also introduced. The two proposed approaches are then stated in Section III, while Section IV is devoted to their algorithmic implementations. Both approaches are compared and evaluated through numerical simulations conducted on simulated data with controlled ground-

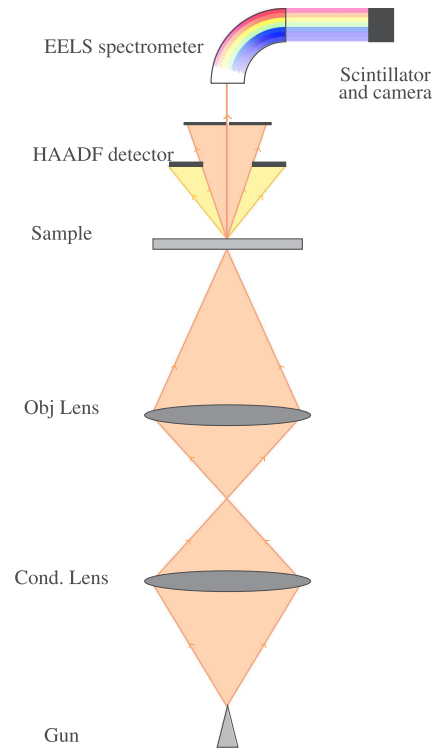


Fig. 1. STEM principle. The electron gun emits an electron beam that is focused on the sample. This interaction is measured by different detectors.

truth in Section V, while Section VI reports experiments on a real dataset acquired by the STEM VG HB 501 microscope operated by LPS. Section VII finally concludes this work.

II. PROBLEM FORMULATION

A. STEM with Variable Spatial Sampling

Since this paper is specifically focused on STEM-EELS microscopy, the following paragraph briefly describes this imaging modality (see [2] for a more detailed description). For that purpose, an overall scheme is depicted in Fig. 1. The microscope is based on an electron beam which is emitted by an electron gun. This beam is focused on a sample local zone thanks to magnetic lenses. Then, for each probe position, two signals are recorded in parallel, namely,

- 1) HAADF 2D imaging: at each sample pixel a real value is measured, depending on the amount of transmitted electrons deviated from the optical axis at a relatively high angle;
- 2) EELS spectrum-imaging: at each sample pixel an energy-loss spectrum is acquired, produced by inelastically scattered electrons.

The present paper focuses on EELS data. A typical EELS spectrum is shown in Fig. 2. This spectrum is mainly composed of i) a zero-loss peak corresponding to the electrons that did not lose any detectable energy by interacting with the sample and ii) a plasmon peak corresponding to collective electron excitations. At higher energy loss, the decreasing slope reveals edges giving information about the nature of sample atoms through inner shell excitation. Such a spectrum is acquired for each spatial position

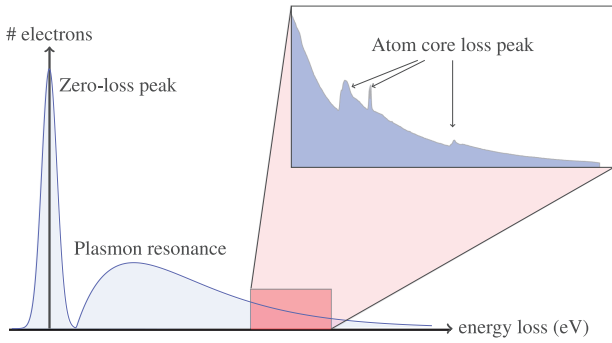


Fig. 2. A typical EELS spectrum.

of the imaged scene. Thus, multivariate data analysis techniques can provide a wide variety of spatial maps corresponding to chemical and physical properties of the sample.

To enable random sampling schemes, material developments have been conducted such as the design of a beam blanker [4]. This blanker switches off the beam (with a switching time below 100 ns) while the camera is readout, using an electrostatic deflector. As soon as the beam is switched off, the next probe position is setup. It drives magnetic coils, with an elapsed time to reach the target position about 50 μ s. Since the camera readout time is always larger than 1ms, the probe can be safely assumed at the target position when the beam is on again. Finally, partial sampling considered in this work can be achieved by stopping the procedure before the end of the random scanning path.

B. Direct and Inverse Problems

Let \mathbf{Y} denote the $M \times P$ matrix that would correspond to the full EELS data composed of P pixels in M channels. As explained previously, acquiring the whole data cube is not always possible because of possible damaging effects the electron dose could have on a sensitive sample. To avoid this, the scene of interest can be sampled at only some given spatial locations. Note that this spatial subsampling scheme is not accompanied by any spectral subsampling, since, at each spatial position, the EELS spectrometer separates simultaneously all electron loss energies, leading to the acquisition of the whole EELS spectrum. To summarize, the full spectra are acquired at N among P available spatial positions, resulting in the spatial subsampling ratio $r = N/P$. The corresponding index set of the N acquired pixels and the matrix of the measurements are denoted \mathcal{I} and $\mathbf{Y}_{\mathcal{I}}$, respectively, where $\mathbf{Y}_{\mathcal{I}}$ is the $M \times N$ matrix gathering the N columns of \mathbf{Y} indexed by \mathcal{I} .

The reconstruction problem consists in recovering a full (and possibly denoised) $M \times P$ spectrum-image \mathbf{X} from the acquired data $\mathbf{Y}_{\mathcal{I}}$. This reconstruction task is an ill-posed problem and can be addressed by minimizing the criterion

$$\hat{\mathbf{X}} \in \arg \min_{\mathbf{X}} \mathcal{L}(\mathbf{X}, \mathbf{Y}_{\mathcal{I}}) + \lambda \phi(\mathbf{X}) + \mu \psi(\mathbf{X}) \quad (1)$$

where $\mathcal{L}(\cdot, \mathbf{Y}_{\mathcal{I}})$ is the data fidelity term and $\phi(\cdot)$ and $\psi(\cdot)$ are spatial and spectral regularizations with corresponding hyperparameters λ and μ , respectively.

In this study, the noise will be assumed to be Gaussian leading to a least square data fidelity term $\|\mathbf{Y}_{\mathcal{I}} - \mathbf{X}_{\mathcal{I}}\|_F^2$. Note that

microscopy images acquired with low beam energy generally suffer from a mixed Gaussian-Poisson noise. In this case, the proposed method can be adapted by defining the data fidelity term accordingly or by resorting to a variance stabilizing transformation.

C. A Priori Information and Regularization

As explained previously, recovering the full spectrum-image \mathbf{X} from the measurements $\mathbf{Y}_{\mathcal{I}}$ is an ill-posed problem, thus requiring appropriate regularizations. This work exploits two different kinds of intrinsic information shared by EELS data, namely spatial smoothness and spectral low-rankness, discussed in what follows.

1) *Spatial Regularizations*: Classical spatial regularizations used in image restoration usually rely on the image gradient $\mathbf{X}\mathbf{D}$, where \mathbf{D} is the spatial discrete gradient operator applied in each channel independently. This gradient can be minimized with respect to (w.r.t.) its ℓ_2 -norm to promote smoothly varying image or w.r.t. its ℓ_1 -norm when considering total variation (TV) to preserve piecewise-constant content. More elaborated regularizations minimize higher order derivation such as the total-generalized variation (TGV) [27], [28] which promotes piecewise-smooth contents. When dealing with multi-band images, spatial regularizations can be extended to promote specific behavior across channels, as the vector TV [29] or the more recent collaborative TV [30]. In the applicative context considered in this work, the EELS images are expected to be spatially smooth since the target spatial resolution is relatively low compared to the atomic resolution. Besides, acquisition distortions, (both in terms of specimen drift and probe displacement) are assumed to be negligible with respect to the size of the pixel for the samples used in this paper, which may not be true for atomic-scale images. Hence, possible spatial high frequencies amplified by these distortions are not visible for the considered images and the smoothness hypothesis can still be assumed. As a consequence, the energy of the spatial gradient, which enforces spatial smoothness in each band, will be considered. Note that the proposed regularization is well suited for low-resolution images, but it is not the most appropriate for high-resolution atomic-scale images.

2) *Spectral Regularizations*: Multiband images encountered in numerous imaging modalities are known to be highly spectrally correlated and, in most cases, obey a low-rank property. A physically-motivated instance of this property arises when analyzing multi-band images under the unmixing paradigm, which assumes that each measured pixel spectrum can be approximated by a mixture of elementary spectra [31]–[33]. However, promoting the low-rank structure of the spectrum-image \mathbf{X} would need to minimize the rank of \mathbf{X} , which is a NP-hard problem. One alternative consists in penalizing its nuclear norm $\|\mathbf{X}\|_*$, defined as the ℓ_1 -norm of its singular values. This popular convex relaxation leads to a tractable convex problem [34].

This work will also consider an alternative spectral regularization based on a subspace constrained formulation. Similarly to the strategy already followed in [35] and [36] for multi-band image fusion, the main idea is to estimate beforehand the linear

subspace where the pixels of the spectrum-image live, and to reconstruct the whole image in this subspace. More precisely, the subspace of interest is first estimated by conducting a principal component analysis (PCA) of the observed measurement. Then, the minimization problem (1) is reformulated for the projection of the spectrum-image onto the first principal components. The variances of the principal components are additionally exploited to define an appropriate weighted spectral regularization.

III. PROPOSED METHODS

The spatial and spectral regularizations described previously lead to two different variational formulations for the EELS image reconstruction problem, which are detailed in the present section.

A. The Smoothed Nuclear Norm Approach

Given the forward model discussed in Section II-B and the expected spatial and spectral characteristics of the reconstructed EELS spectrum-image detailed in Section II-C, the first reconstruction method consists in solving the following optimization problem

$$\hat{\mathbf{X}} = \underset{\mathbf{X} \in \mathbb{R}^{M \times P}}{\operatorname{argmin}} \frac{1}{2} \|\mathbf{Y}_{\mathcal{I}} - \mathbf{X}_{\mathcal{I}}\|_{\mathbb{F}}^2 + \frac{\lambda_{\text{S2N}}}{2} \|\mathbf{X}\mathbf{D}\|_{\mathbb{F}}^2 + \mu_{\text{S2N}} \|\mathbf{X}\|_* \quad (2)$$

where \mathbf{D} is the spatial discrete gradient operator applied in each channel independently. This optimization problem, referred to as Smoothed Nuclear Norm (S2N), relies on two hyperparameters λ_{S2N} and μ_{S2N} which adjust the weights of the spatial and spectral regularizations, respectively. The choice of these hyperparameters is discussed in Appendix A.

B. The Smoothed SubSpace Approach

To promote the low-rank property of the reconstructed EELS spectrum-image, the S2N approach introduced in the previous paragraph relies on a soft penalization induced by its nuclear norm. Conversely, the Smoothed SubSpace (3S) approach described in what follows imposes this property through a hard constraint. More precisely, the image to be recovered is assumed to write $\mathbf{X} = \mathbf{H}\mathbf{S}$ where \mathbf{H} is a $M \times M$ orthonormal matrix defining the data principal component basis and $\mathbf{S} = [\mathbf{s}_1, \dots, \mathbf{s}_P]$ is a $M \times P$ matrix which gathers the representation coefficients of the spectrum-pixels in this basis. In this work, the basis \mathbf{H} is supposed to be estimated beforehand by conducting a principal component analysis (PCA) of the observed pixels $\mathbf{Y}_{\mathcal{I}}$. Note that, as discussed in Section I, a partial spatial sampling of the scene results in a higher SNR than the one obtained with a conventional sampling. Thus, the first principal components of highest energy are expected to span a reliable estimate of the actual signal subspace (assumed to be of dimension R_{true}).

Given this decomposition, the reconstruction of the spectrum-image \mathbf{X} can be formulated directly into the principal component basis and boils down to estimating the $M \times P$ coefficient matrix \mathbf{S} . Thus the quadratic data-fitting term $\|\mathbf{Y}_{\mathcal{I}} - \mathbf{X}_{\mathcal{I}}\|_{\mathbb{F}}^2$

already used in the S2N criterion (2) can be replaced by $\|\mathbf{Y}_{\mathcal{I}} - \mathbf{H}\mathbf{S}_{\mathcal{I}}\|_{\mathbb{F}}^2$ or equivalently, since \mathbf{H} is orthogonal, by $\|\mathbf{H}^T \mathbf{Y}_{\mathcal{I}} - \mathbf{S}_{\mathcal{I}}\|_{\mathbb{F}}^2$. Similarly, the spatial smoothness promoting term $\|\mathbf{X}\mathbf{D}\|_{\mathbb{F}}^2$ in (2) can be rewritten with respect to the representation vectors $\|\mathbf{S}\mathbf{D}\|_{\mathbb{F}}^2$.

Moreover, when the eigenvectors $\mathbf{h}_1, \dots, \mathbf{h}_M$ identified by PCA and composing the columns of \mathbf{H} are ordered with respect to eigenvalues sorted in decreasing order, the corresponding representation vectors $\mathbf{S}_{1,:}, \dots, \mathbf{S}_{M,:}$ are expected to be of decreasing energy magnitudes, where $\mathbf{S}_{m,:}$ stands for the m th row of \mathbf{S} . In particular, if the pixel spectra lie into a subspace of dimension R_{true} with $R_{\text{true}} \leq M$, the squared norm $\|\mathbf{S}_{m,:}\|_2^2$ of the irrelevant representation vectors is expected to be close to 0 for $m \geq R_{\text{true}}$. This suggests a weighted penalization of the form $\sum_{m=1}^M w_m \|\mathbf{S}_{m,:}\|_2^2$ with increasing weights $(w_m)_{m=1, \dots, M}$. The design of the weights discussed in Appendix B proposes w_m to be infinity for $m \geq R + 1$ where R is an estimate of the actual dimension R_{true} ($R \leq M$). This rule systematically implies $\mathbf{S}_{m,:}$ to be the null vector for $m \geq R + 1$. In other words, the 3S optimization problem can be equivalently written with respect to a $R \times P$ matrix $\mathbf{S}_{1:R,:}$.

Finally, the proposed 3S approach consists in solving the following optimization problem

$$\hat{\mathbf{S}} = \underset{\mathbf{S} \in \mathbb{R}^{R \times P}}{\operatorname{argmin}} \frac{1}{2R} \|\mathbf{S}\mathbf{D}\|_{\mathbb{F}}^2 + \frac{\mu_{3S}}{2} \sum_{m=1}^R w_m \|\mathbf{S}_{m,:}\|_2^2$$

$$\text{s.t.} \quad \frac{1}{R} \|\mathbf{H}_{1:R}^T \mathbf{Y}_{\mathcal{I}(n)} - \mathbf{S}_{\mathcal{I}(n)}\|_2^2 \leq \hat{\sigma}^2, \forall n \in \llbracket 1, N \rrbracket \quad (3)$$

where μ_{3S} is a parameter adjusting the relative impact of the spatial and spectral regularizations and $\mathbf{H}_{1:R}$ stands for the $M \times R$ matrix composed of the first R columns of \mathbf{H} . In (3), the data-fitting term $\mathcal{L}(\cdot, \mathbf{Y}_{\mathcal{I}})$ in (1) is converted into a constraint, since the squared Euclidean distance between the observations and the solution is expected to be bounded by the noise variance σ^2 .

In practice, as detailed in Appendices B and C, an estimate $\hat{\sigma}^2$ of the noise variance σ^2 and an estimate R of R_{true} can be derived from an eigen-analysis of the empirical covariance matrix of the observations. The reconstructed image is finally defined as¹ $\hat{\mathbf{X}} = \mathbf{H}_{1:R} \mathbf{S}_{1:R,:}$. The advantages of formulating the reconstruction task as described above are twofold. First, it explicitly imposes a low-rank decomposition of the spectrum-image to be recovered. Second, as discussed in the following implementation section, it reduces the computational cost of the resulting minimization algorithm since R is expected to be significantly lower than M .

IV. IMPLEMENTATION

This section describes the algorithmic implementations derived to solve the optimization problems (2) and (3). Both rely on the fast iterative shrinkage thresholding algorithm (FISTA) [37] briefly recalled in the following paragraph.

¹To lighten the writing, despite a slight abuse of notations, the underscripts $\cdot_{1:R,:}$ and $\cdot_{1:R}$ will be omitted in the sequel of the paper.

Algorithm 1: FISTA with Constant Step Size [36].

1 **Input :** $L > L_f$ an upper bound of L_f
2 **Initialisation :** Set $\mathbf{y}^{(1)} = \mathbf{x}^{(0)} \in \mathbb{R}^p$, $\theta^{(1)} = 1$, $i = 1$
while stopping rule not satisfied do
3 $\mathbf{x}^{(i)} = \text{prox}_{g/L}(\mathbf{y}^{(i)} - \frac{1}{L}\nabla f(\mathbf{y}^{(i)}))$
4 $\theta^{(i+1)} = \frac{1}{2}(1 + \sqrt{1 + 4(\theta^{(i)})^2})$
5 $\mathbf{y}^{(i+1)} = \mathbf{x}^{(i)} + \left(\frac{\theta^{(i)} - 1}{\theta^{(i+1)}}\right)(\mathbf{x}^{(i)} - \mathbf{x}^{(i-1)})$
6 $i \leftarrow i + 1$

A. FISTA General Framework

FISTA solves the generic optimization problem of the form

$$\hat{x} = \arg \min_x f(x) + g(x) \quad (4)$$

where

- 1) $f: \mathbb{R}^p \rightarrow \mathbb{R}$ is a convex function, continuously differentiable with L_f -Lipschitz continuous gradient,
- 2) $g: \mathbb{R}^p \rightarrow \mathbb{R}$ is a convex possibly nonsmooth function.

For any $L > L_f$, the FISTA algorithm given in Algorithm 1 converges toward a solution of (4). The specific instances of FISTA for the problems (2) and (3) under consideration are presented in the following subsections.

B. Application to S2N

To solve (2), the S2N method consists in adopting the following decomposition

$$f(\mathbf{X}) = \frac{1}{2} \|\mathbf{Y}_{\mathcal{I}} - \mathbf{X}_{\mathcal{I}}\|_{\text{F}}^2 + \frac{\lambda_{\text{S2N}}}{2} \|\mathbf{X}\mathbf{D}\|_{\text{F}}^2 \quad (5)$$

$$g(\mathbf{X}) = \mu_{\text{S2N}} \|\mathbf{X}\|_{*}. \quad (6)$$

The corresponding gradient of $f(\cdot)$ required in Step 3 of Algorithm 1 is given by

$$\nabla f(\mathbf{X}) = (\mathbf{X}_{\mathcal{I}} - \mathbf{Y}_{\mathcal{I}}) - \lambda_{\text{S2N}} \mathbf{X}\mathbf{\Delta} \quad (7)$$

where $\mathbf{\Delta} = -\mathbf{D}\mathbf{D}^T$ is the discrete spatial Laplacian operator. An upper bound of L_f is given by

$$\begin{aligned} & \|\nabla f(\mathbf{X}_1) - \nabla f(\mathbf{X}_2)\|_{\text{F}} \\ &= \|(\mathbf{X}_{1\mathcal{I}} - \mathbf{X}_{2\mathcal{I}}) - \lambda_{\text{S2N}}(\mathbf{X}_1 - \mathbf{X}_2)\mathbf{\Delta}\|_{\text{F}} \\ &\leq \underbrace{(1 + \lambda_{\text{S2N}} \|\mathbf{\Delta}\|)}_L \|\mathbf{X}_1 - \mathbf{X}_2\|_{\text{F}} \end{aligned}$$

where $\|\mathbf{\Delta}\|$ stands for the spectral norm of the discrete Laplacian, which is 8 in dimension 2. The Lipschitz constant upper bound is then $L = 1 + 8\lambda_{\text{S2N}}$.

Besides, by denoting $\mathbf{X} = \mathbf{U}\mathbf{\Sigma}\mathbf{V}^T$ the singular value decomposition of \mathbf{X} , where $\mathbf{\Sigma} = \text{diag}(\mu_i)$, the proximal operator associated with $g(\cdot)$ is [38]:

$$\text{prox}_g(\mathbf{X}) = \mathbf{U}\bar{\mathbf{\Sigma}}\mathbf{V}^T, \quad (8)$$

where $\bar{\mathbf{\Sigma}} = \text{diag}(\bar{\mu}_i)$ contains the soft-thresholded singular values with threshold μ_{S2N} , i.e.,

$$\bar{\mu}_i = \text{sgn}(\mu_i)(\mu_i - \mu_{\text{S2N}})\mathbb{1}_{\mu_i > \mu_{\text{S2N}}}(\mu_i) \quad (9)$$

TABLE I
COMPUTATIONAL COMPLEXITY OF S2N AND 3S

	S2N	3S
Line 3 (gradient descent)	$\mathcal{O}(MP)$	$\mathcal{O}(RP)$
Line 3 (proximal operator)	$\mathcal{O}(MP^2)$	$\mathcal{O}(RN)$
Line 5	$\mathcal{O}(MP)$	$\mathcal{O}(RP)$
Lines 4 and 6	$\mathcal{O}(1)$	$\mathcal{O}(1)$
TOTAL	$\mathcal{O}(MP^2)$	$\mathcal{O}(RP)$
Execution time (s)	237	0.18

Best scores appear in bold.

where sgn is the sign function and where $\mathbb{1}$ is the indicator function.

C. Application to 3S

When tackling the problem (3), the proposed 3S algorithm relies on the following decomposition

$$f(\mathbf{S}) = \frac{1}{2R} \|\mathbf{S}\mathbf{D}\|_{\text{F}}^2 + \frac{\mu_{3\text{S}}}{2} \sum_{m=1}^R w_m \|\mathbf{S}_{m,:}\|_2^2 \quad (10)$$

$$g(\mathbf{S}) = \sum_{n=1}^N \iota_{\mathcal{B}(\mathbf{H}^T \mathbf{Y}_{\mathcal{I}(n)}, \sqrt{R}\hat{\sigma})}(\mathbf{S}_{\mathcal{I}(n)}) \quad (11)$$

where

$$\iota_{\mathcal{A}}(x) = \begin{cases} 0, & \text{if } x \in \mathcal{A} \\ +\infty, & \text{if } x \notin \mathcal{A} \end{cases} \quad (12)$$

is the indicator function related to set \mathcal{A} and $\mathcal{B}(x_0, r)$ is the closed ℓ_2 -ball of center x_0 and radius r . The gradient of $f(\cdot)$ is

$$\nabla f(\mathbf{S}) = -\frac{1}{R} \mathbf{S}\mathbf{\Delta} + \mu_{3\text{S}} \mathbf{W}\mathbf{S} \quad (13)$$

where $\mathbf{W} = \text{diag}\{w_1, \dots, w_R\}$ is the diagonal matrix containing the weights. Similar computations as the ones conducted for S2N lead to the upper bound of the Lipschitz constant $L = 8 + \mu_{3\text{S}} \max_m \{w_m\}$. Moreover, as shown by (11), the function $g(\cdot)$ is separable with respect to the pixel indexes $n \in \llbracket 1, N \rrbracket$. Hence, the proximal operator associated with $g(\cdot)$ consists in projecting $\mathbf{S}_{\mathcal{I}(n)}$ on $\mathcal{B}(\mathbf{H}^T \mathbf{Y}_{\mathcal{I}(n)}, \sqrt{R}\hat{\sigma})$ for all $n \in \llbracket 1, N \rrbracket$.

D. Algorithm Complexity

This paragraph discusses the computational complexity of the S2N and 3S algorithms. When analyzing the generic algorithmic scheme of FISTA in Algorithm 1, the complexity of the two steps in lines 3 to 6 is needed for both approaches.

First, lines 4 and 6 are clearly of asymptotic order $\mathcal{O}(1)$. Then, concerning line 5, which consists only in matrix addition, the complexity is of $\mathcal{O}(MP)$ and $\mathcal{O}(RP)$ for S2N and 3S, respectively. Line 3 consists in a gradient descent step, followed by a proximity mapping. The detail is shown in Table I. This study shows that S2N is computationally heavier than 3S mainly be-

cause S2N requires an SVD at each iteration, while 3S operates on a matrix of lower dimension since $R \leq M$.

In addition to the complexity study lead above, the execution times required to reconstruct the real spectrum-image used in Section VI are given in Table I for an implementation on a desktop computer equipped with an Intel Xeon CPU with 3.70 GHz frequency and 15.6Go RAM. These results show that 3S is around 1,300 times faster than S2N when reconstructing this spectrum-image, for which $MP^2 \approx 10^9$ and $RP \approx 3 \times 10^5$.

V. SIMULATION RESULTS

A. Synthetic Datasets

The performances of the proposed methods are assessed thanks to experiments conducted on synthetic spectrum-images. More precisely, the proposed methods are applied to the full spectrum-image $\mathbf{Y} \in \mathbb{R}^{M \times P}$ which is generated according to

$$\mathbf{Y} = \mathbf{X} + \mathbf{E} \quad (14)$$

where \mathbf{X} is the noise-free spectrum image and \mathbf{E} is a noise matrix. To mimic realistic EELS acquisitions, the noise-free image has been decomposed as $\mathbf{X} = \mathbf{M}\mathbf{A}$, following the so-called linear mixing model that can be used to describe the spatial mapping of materials within an observed sample [39]. The $M \times N_c$ matrix $\mathbf{M} = [\mathbf{m}_1, \dots, \mathbf{m}_{N_c}]$ gathers N_c spectra associated with distinct materials (referred to as *endmembers*) and $\mathbf{A} = [\mathbf{a}_1, \dots, \mathbf{a}_P]$ is a $N_c \times P$ matrix which stands for the spatial distribution of the materials in the pixels (referred to as *abundances*).

Choice of the endmember matrix \mathbf{M} : As it is complicated to simulate whole EELS spectra with different edges and a fine structure for each edge, representative endmember spectra $\mathbf{m}_1, \dots, \mathbf{m}_{N_c}$ were directly extracted from a real data set already considered for its medical interest: a section of kidney (biological tissue) embedded in resin and containing calcifications [40]. For such complex biological samples, the number of endmembers N_c has to be adjusted on each data set and is typically between 3 and 5. Here, the number of extracted endmembers is chosen as $N_c = 4$. Endmember extraction is conducted using the vertex component analysis (VCA), a popular algorithm designed for remote sensing hyperspectral images [41], that is now frequently used by the EELS community. The spectra are shown in Fig. 3 where four particular *energy thresholds* reveal the presence of chemical elements: carbon (K -edge at 285 eV), calcium ($L_{2,3}$ -edge composed of a double peak around 350 eV), nitrogen (K -edge at 400 eV) and oxygen (K -edge at 530 eV). These components do not correspond to well defined chemicals compounds. Nevertheless, for simplicity, in the following, the endmembers will be related to particular materials and designed as calcification (with Ca $L_{2,3}$ -edge), resin, organic 1 (with N- K edge) and organic 2. The number of bands (corresponding to energy channels of the spectrometer) is $M = 1337$.

Choice of the abundance matrix \mathbf{A} : The coefficient a_{kp} gives the proportion of the k th endmember in the p th pixel. To ensure a comprehensive additive description of the spectrum-image in terms of the N_c materials introduced above, these coefficients are assumed to be nonnegative and subject to sum-to-one con-

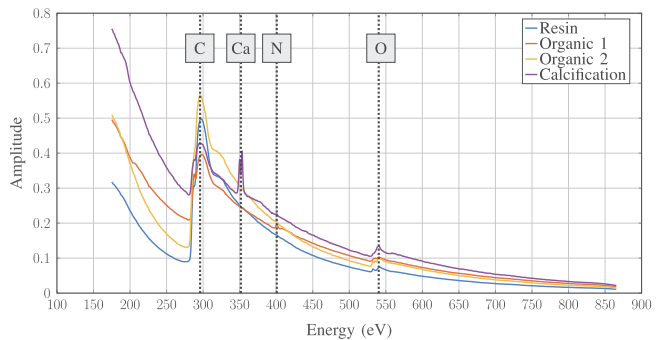


Fig. 3. The $N_c = 4$ endmember spectra represented as amplitude vs. energy loss (in eV). The following characteristic thresholds are depicted: carbon (285 eV), calcium (350 eV), nitrogen (400 eV) and oxygen (530 eV).

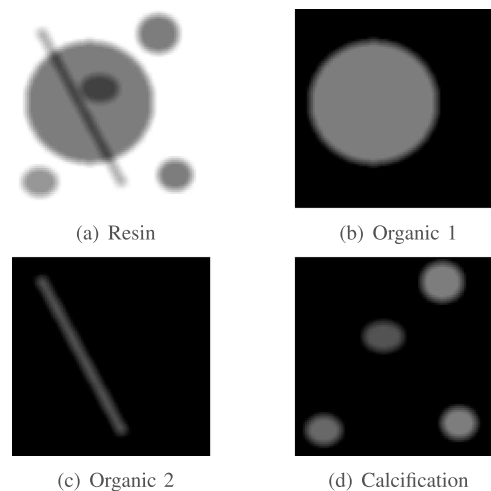


Fig. 4. The abundance maps used to generate the synthetic data. A zero-valued (resp. one-valued) abundance coefficient appear in black (resp. white), which corresponds to the absence (resp. presence) of the corresponding endmember. (a) Resin (b) Organic 1 (c) Organic 2 (d) Calcification.

straint for each pixel, i.e.,

$$a_{kp} \geq 0, \quad \forall p \in \llbracket 1, P \rrbracket, \forall k \in \llbracket 1, N_c \rrbracket, \quad (15)$$

$$\sum_{k=1}^{N_c} a_{kp} = 1, \quad \forall p \in \llbracket 1, P \rrbracket. \quad (16)$$

According to these constraints, four abundance maps $\mathbf{A}_{k,:} = [a_{k1}, \dots, a_{kP}]$ ($k \in \llbracket 1, N_c \rrbracket$) represented in Fig. 4 have been designed to define the spatial distribution of the different materials in the sample. In these experiments, the spatial maps are of size 100×100 pixels, which corresponds to $P = 10000$.

Generation of the noise matrix \mathbf{E} : The components of the noise matrix \mathbf{E} are independently and identically randomly generated according to a centered Gaussian distribution. The noise variance has been adjusted to reach realistic signal-to-noise ratios (SNRs) that will be specified later.

B. Performance w.r.t. the Regularization Parameters

We first evaluate the impact of the regularization parameters (λ_{S2N}, μ_{S2N}) and μ_{3S} on the quality of the spectrum-image reconstructed by the two proposed algorithms 3S and S2N for

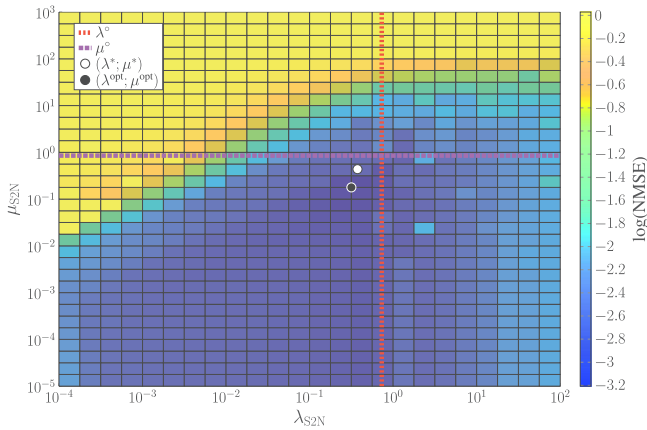


Fig. 5. S2N NMSE as a function of $(\lambda_{S2N}, \mu_{S2N})$. The white marker locates to the parameters $(\lambda_{S2N}^*, \mu_{S2N}^*)$ tuned following the procedure described in Appendix A. The vertical and horizontal lines correspond to the intermediate values $\lambda_{S2N} = \lambda_{S2N}^{\circ}$ and $\mu_{S2N} = \mu_{S2N}^{\circ}$ retrieved during this procedure. The black marker shows the optimal parameter set $(\lambda_{S2N}^{\text{opt}}, \mu_{S2N}^{\text{opt}})$ leading to the minimal MSE value on the grid.

TABLE II
S2N AND 3S NMSE FOR PARTICULAR VALUES OF THE
REGULARIZATION PARAMETERS

Parameters	Values	NMSE
$(\lambda_{S2N}, \mu_{S2N})$	$(\lambda_{S2N}^{\text{opt}}, \mu_{S2N}^{\text{opt}})$	$6.209 \cdot 10^{-4}$
	$(\lambda_{S2N}^*, \mu_{S2N}^*)$	$1.521 \cdot 10^{-3}$
μ_{3S}	1	$2.494 \cdot 10^{-4}$

Best scores appear in bold.

a noise level of $\text{SNR} = 25$ dB and a sampled pixel ratio $r = N/P = 0.2$. The considered figure-of-merit is the normalized mean square error (NMSE)

$$\text{NMSE}(\mathbf{X}, \hat{\mathbf{X}}) = \frac{\|\hat{\mathbf{X}} - \mathbf{X}\|_F^2}{\|\mathbf{X}\|_F^2} \quad (17)$$

associated with the reconstructed image $\hat{\mathbf{X}}$ obtained for various parameter values.

Fig. 5 depicts the performance results of the S2N algorithm as a function of the regularization parameters $(\lambda_{S2N}, \mu_{S2N})$ on a given grid. In addition, some specific values are reported in Table II. In particular, the minimum NMSE obtained on the grid is located with a black dot whereas the parameter values obtained by the method described in Appendix A is given with a white dot. The vertical and horizontal lines corresponds to the intermediate values λ_{S2N}° and μ_{S2N}° obtained during the procedure by independently adjusting the spatial or spectral regularizations while removing the other. As expected, this figure shows that the optimal NMSE is reached for non-zero values for both parameters, demonstrating that both spatial and spectral regularizations are needed. Indeed, extreme values of λ_{S2N} give too smooth images or too rough images. Similarly, high values of μ_{S2N} lead to trivial rank-one images whereas a too low value does not spectrally regularize the image. Moreover the intermediate

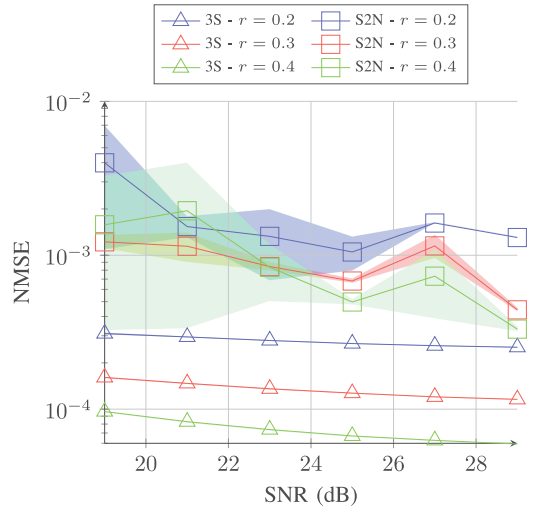


Fig. 6. Performance of S2N and 3S in term of NMSE as functions of the pixel ratio r and noise level. Colored filling corresponds to standard deviation interval.

λ_{S2N}° and μ_{S2N}° values recovered by adjusting the regularization separately tend to over-estimate each regularization compared to the optimal ones. This behavior was expected, and scaling these values as explained in Appendix A leads to a reasonably efficient tuning. Note however that even though those values are close to the optimal ones, the NMSE values reported in Table II show that the corresponding NMSE is about twice worse: the algorithm seems quite sensitive to the parameters.

Thanks to its constrained formulation, the 3S algorithm requires to adjust only one regularization parameter, namely μ_{3S} , which balances the relative contributions of the spectral and spatial regularizations. When μ_{3S} is too small (resp. large), the spatial regularization becomes preponderant (resp. negligible), which leads to an over- (resp. under-) smoothed image. Experiments (not reported in this paper for brevity) have shown that the 3S is not very sensitive to the tuning of the hyperparameter and that choosing $\mu_{3S} = 1$ consistently leads to satisfactory results (the corresponding NMSE is reported in Table II). This value will be subsequently used in the experiments reported in this section.

C. Performance w.r.t. Noise Level and Sampling Ratio

Then, the two algorithms have been evaluated for various noise levels and pixel ratios r . The NMSE have been averaged over 10 Monte Carlo simulations, for each of which an independent noise matrix \mathbf{E} has been drawn while the sampled pixel mask \mathcal{I} has been kept fixed. The results are shown in Fig. 6. According to this figure, 3S seems to give good reconstruction results, with smaller NMSE and smaller variances. Conversely, S2N produces higher NMSE (nearly ten times greater than those obtained by 3S) and higher variances, especially for low SNR values. This difference between both algorithms may have two main explanations. First, as seen previously, the parameters of S2N seem more difficult to be tuned. Second, the nuclear norm used in S2N is known to be a biased proxy for the rank, thus reducing the performance of the reconstruction.

D. Reconstruction vs. Denoising w.r.t. an Unmixing Task

Typical acquisition conditions (referred to as protocol \mathcal{P}_0) are defined by a sequential sampling ($r = 1$) with an acquisition time of $\Delta t = 10$ ms per pixel. As explained in Section I, organic samples are easily deteriorated by the electron radiation during the acquisition process. To overcome this issue, the total electron dose should be reduced by adjusting either the ratio r of visited locations or the time spent Δt to acquire the spectrum in each spatial location. Two sampling strategies have been envisioned to try to reduce sample damage at a given beam current.

The first protocol, denoted \mathcal{P}_1 , consists in acquiring the spectra in all the spatial locations ($r = 1$), but reducing the acquisition time $\Delta t = 2$ ms for each pixel. The resulting decrease of the signal-to-noise ratio (SNR) can be mitigated by a subsequent denoising step. The second acquisition strategy \mathcal{P}_2 , which motivated the proposed work, consists in acquiring a subset of pixel spectra (i.e., $r \leq 1$) with a same acquisition time $\Delta t = 10$ ms (i.e., higher SNR). To compare these two acquisition protocols, two distinct datasets have been generated, corresponding to the same total beam energy \mathcal{E}

- 1) Protocol \mathcal{P}_1 : $\Delta t = 2$ ms, $r = 1$,
- 2) Protocol \mathcal{P}_2 : $\Delta t = 10$ ms, $r = 0.2$.

For each protocol, the noise levels have been adjusted to reach realistic SNR encountered in typical acquisitions for these exposition time Δt : SNR = 19 dB and SNR = 25 dB for Protocols \mathcal{P}_1 and \mathcal{P}_2 , respectively.

To evaluate the interest of the partial sampling paradigm, the exploitability of the reconstructed images after an acquisition process according to the protocol \mathcal{P}_2 is compared with the exploitability of the full image acquired under the experimental protocol \mathcal{P}_1 with respect to the ground truth image (referred to as *oracle* in what follows). Moreover, denoised version of the image acquired according to Protocol \mathcal{P}_1 are also considered, where the denoising algorithms are PCA+NL-means, S2N and 3S. Here, PCA+NL-means consists in the succession of two steps: a thresholded PCA, which consists in projecting the data in the subspace defined by the R_{PCA} most powerful PCA directions (acting as a spectral denoising step) followed by 3D NL-means [42] applied to the PCA-denoised image (acting as a joint spatial and spectral denoising step). The subspace dimension R_{PCA} was chosen to be slightly higher than R to prevent PCA from removing relevant information (for the synthetic dataset where $R_{\text{true}} = 3$, R_{PCA} has been set to 10). Note that alternative denoising algorithms can be considered, such as the FastHyDe algorithm specifically dedicated to hyperspectral images [43]. As a consequence, 7 spectrum-images will be compared here:

- 1) Oracle: the noise-free synthetic data,
- 2) the images based on the fully acquired spectrum-image using protocol \mathcal{P}_1 (referred to as Full_{2ms}) which are the Full_{2ms} image and the denoised versions using the PCA+NL-means, S2N and 3S algorithms,
- 3) the images based on the partially acquired spectrum-image using protocol \mathcal{P}_2 and reconstructed using S2N and 3S.

TABLE III
RECONSTRUCTION AND UNMIXING PERFORMANCE

Protocol	Algorithm	NMSE ($\mathbf{X}, \hat{\mathbf{X}}$)	aSAD ($\mathbf{M}, \hat{\mathbf{M}}$)	NMSE ($\mathbf{A}, \hat{\mathbf{A}}$)
Oracle		0.000000	0.07014	0.21721
\mathcal{P}_1	Full _{2ms}	0.011964	0.14321	0.46452
	PCA+NLm	0.000051	0.14321	0.45895
	S2N	0.000464	0.14321	0.44863
	3S	0.000047	0.14321	0.47287
\mathcal{P}_2	S2N	0.001002	0.11025	0.45977
	3S	0.000257	0.11025	0.37121

Best scores appear in bold.

These spectrum-images will be referred to as Protocol-algorithm in the following (e.g., \mathcal{P}_2 -3S is the 3S reconstruction of the spectrum-images acquired using the protocol \mathcal{P}_2).

The exploitability of these 7 images is evaluated with respect to a conventional task frequently conducted when analyzing EELS spectrum-image. Indeed, since experimentalists are rather interested by the composition of the sample, they resort to various *unmixing* techniques elaborated to recover both endmember spectra and abundance maps of interesting components from the spectrum-image [39]. Therefore, on each spectrum-image, the spectra \mathbf{m}_k , $k \in \llbracket 1, \dots, N_c \rrbracket$, have been recovered using the SISAL algorithm [44] applied on the acquired data under Protocols \mathcal{P}_1 or \mathcal{P}_2 . The quality of the estimated endmember matrix $\hat{\mathbf{M}}$ is evaluated using the average spectral angle distance (aSAD) defined by [45], [46]

$$\text{aSAD}(\mathbf{M}, \hat{\mathbf{M}}) = \frac{1}{N_c} \sum_{k=1}^{N_c} \arccos \left(\frac{\langle \mathbf{m}_k, \hat{\mathbf{m}}_k \rangle}{\|\mathbf{m}_k\|_2 \times \|\hat{\mathbf{m}}_k\|_2} \right). \quad (18)$$

The aSAD gives a small value when both actual and estimated spectra are approximately equal or collinear, while different spectra shapes will produce a high aSAD.

Based on the endmember estimates, the abundance maps \mathbf{A} are estimated from the compared images using the SUNSAL algorithm [47]. The relevance of the estimated abundance maps is evaluated by computing the corresponding NMSE($\mathbf{A}, \hat{\mathbf{A}}$) as defined by (17).

In addition to this quantitative assessment in terms of unmixing performance, a qualitative evaluation is conducted by visual inspection of the reconstructed images. Synthetic red-green-blue compositions of the images of interest are generated by selecting 3 specific bands (energy channels) associated with the presence of chemical elements: $b_{\text{red}} = 236$ (carbon), $b_{\text{green}} = 346$ (calcium) and $b_{\text{blue}} = 709$ (oxygen). To ensure fair comparisons between the images, the channels are independently scaled with respect to a dynamic range common for all the images.

The quantitative results are reported in Table III while the reconstructed images and estimated abundance maps are depicted in Fig. 7. Note that the unmixing results obtained from the six acquired, denoised and reconstructed images are also compared

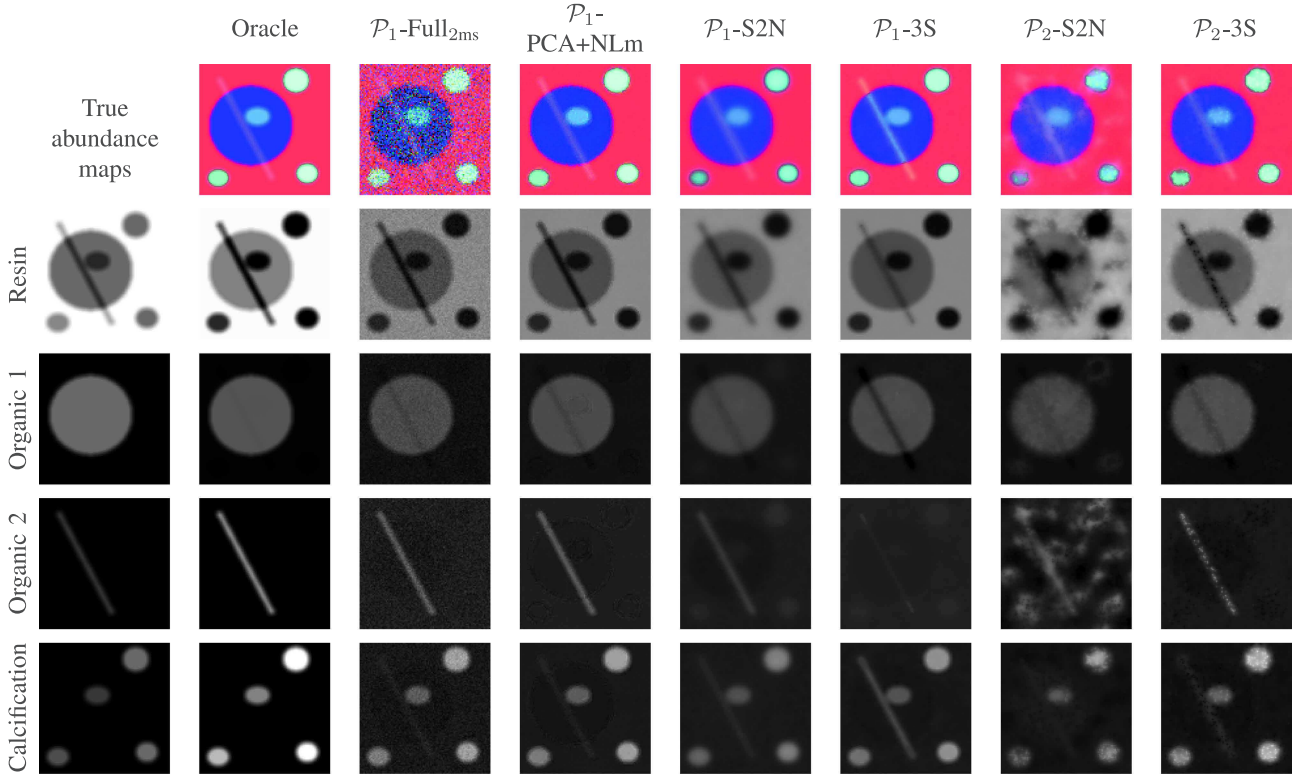


Fig. 7. Row 1: colored composition of the oracle, acquired (Full_{2ms}), denoised (protocol \mathcal{P}_1) and reconstructed (protocol \mathcal{P}_2) spectrum-images. Rows 2-5: the abundance maps estimated by SUNSAL on the corresponding spectrum-images.

with those that would be obtained directly on the ground truth image \mathbf{X} . These oracle estimates give the most optimistic performance that could be reached when unmixing the denoised or reconstructed images. Note also that the Oracle NMSE is zero as the Oracle image is exactly the ground truth image \mathbf{X} , whereas the Oracle $\text{aSAD}(\mathbf{M}, \hat{\mathbf{M}})$ and $\text{NMSE}(\mathbf{A}, \hat{\mathbf{A}})$ are non-zero since the unmixing algorithms do not recover exactly the endmember and abundance maps used to generate \mathbf{X} .

One can first observe that denoising the image acquired following Protocol \mathcal{P}_1 leads to significant lower NMSE for the spectrum-image than those obtained by reconstructing the image acquired following Protocol \mathcal{P}_2 (except for \mathcal{P}_1 -S2N which gives worse results than \mathcal{P}_2 -3S). The proposed reconstruction algorithms applied after partial sampling seem to be less efficient, despite higher SNR during the acquisition process. However, the performance w.r.t. the unmixing task is in favor of Protocol \mathcal{P}_2 . Indeed, the endmember spectra are better recovered in the image acquired with longer exposition time than in the image acquired with shorter acquisition time, even after a denoising step. This finding was quite expected for the recovered endmember spectra, since the observed pixels within partial sampling have a higher SNR. Thus the SISAL extraction endmember algorithm can exploit more reliable measured pixel spectra to estimate the material spectral signatures. Moreover, the abundance maps estimated on the image reconstructed by the proposed 3S algorithm achieves a lower NMSE, demonstrating that this reconstructed image can be reliably exploited to spatially map the materials in the spectrum-image.

Qualitatively, visual inspection of the abundance maps depicted in Fig. 7 shows that the reconstruction techniques produce rougher maps, with some holes corresponding to non-sampled areas. But there is less mixing between the different components, e.g., in particular for Organic 1 and Organic 2 maps recovered on the image reconstructed by 3S. To summarize, for the same amount of beam energy, partial sampling seems to enable better endmember extraction and spectrum detail recovery than denoising, even though thin spatial structures (such as Organic 2 in our example) may be spatially mapped with less accuracy.

Finally, one can observe that using the S2N and 3S algorithms as denoising procedures give errors comparable to PCA+NLm (except for the NMSE of \mathcal{P}_1 -S2N). Yet, \mathcal{P}_1 -3S unmixing results are significantly worse than \mathcal{P}_1 - PCA + NLm.

VI. A REAL-DATA EXAMPLE

In this section, the proposed reconstruction methods are applied to a real sample whose gray-scale HAADF image is given in Fig. 8. This sample is a biological tissue containing particles made of calcium phosphate. The sample was chemically fixed, dehydrated and embedded in an epoxy resin. Ultrathin sections were then prepared. Elements analyzed are listed in the previous subsection V-A, i.e., carbon, calcium, nitrogen and oxygen. This sample has been acquired by the STEM VG HB 501 microscope equipped with a partial sampling implementation.

In the experimental setup, three distinct protocols are considered to image the sample:

- 1) Protocol \mathcal{P}_0 : $\Delta t = 10$ ms, $r = 1$,

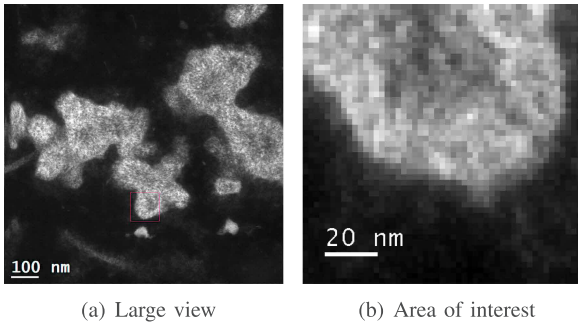


Fig. 8. The HAADF images of the sample zone. (a) 51×51 region of interest (b).

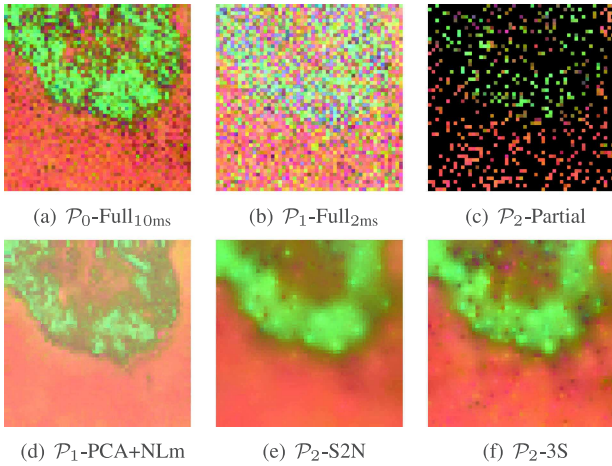


Fig. 9. Colored compositions of the real spectrum-images.

- 2) Protocol \mathcal{P}_1 : $\Delta t = 2$ ms, $r = 1$,
- 3) Protocol \mathcal{P}_2 : $\Delta t = 10$ ms, $r = 0.2$.

Protocol \mathcal{P}_0 corresponds to usual acquisition parameters for this type of samples. The spectrum-images associated to protocols \mathcal{P}_0 to \mathcal{P}_2 are respectively called Full_{2ms}, Full_{10ms} and Partial. Following the notation Protocol-Algorithm used in the previous section, the spectrum-images that will be compared here are

- 1) the fully sampled images \mathcal{P}_0 -Full_{10ms} and \mathcal{P}_1 -Full_{2ms},
- 2) the denoised image \mathcal{P}_1 -PCA+NLM,
- 3) the reconstructed images \mathcal{P}_2 -S2N and \mathcal{P}_2 -3S.

The acquired image size is with 51×51 pixels and synthetic colored compositions of these images are represented in Fig. 9 where \mathcal{P}_1 -Full_{2ms} is used as a reference image to define the color dynamics. Concerning the S2N and the 3S parameters, the S2N regularization parameter was chosen using the procedure detailed in Appendix A while the 3S μ_{3S} parameter has been hand tuned to find a trade-off between spatial and spectral smoothness.

As in the previous section, to evaluate the performances of the proposed methods, these images are unmixed using SISAL to extract the signatures of the materials and SUNSAL to estimate the corresponding abundance maps. The maps are depicted in Fig. 10 while the endmember signatures are given in Fig. 11. A number of $N_c = 5$ components has been chosen but only

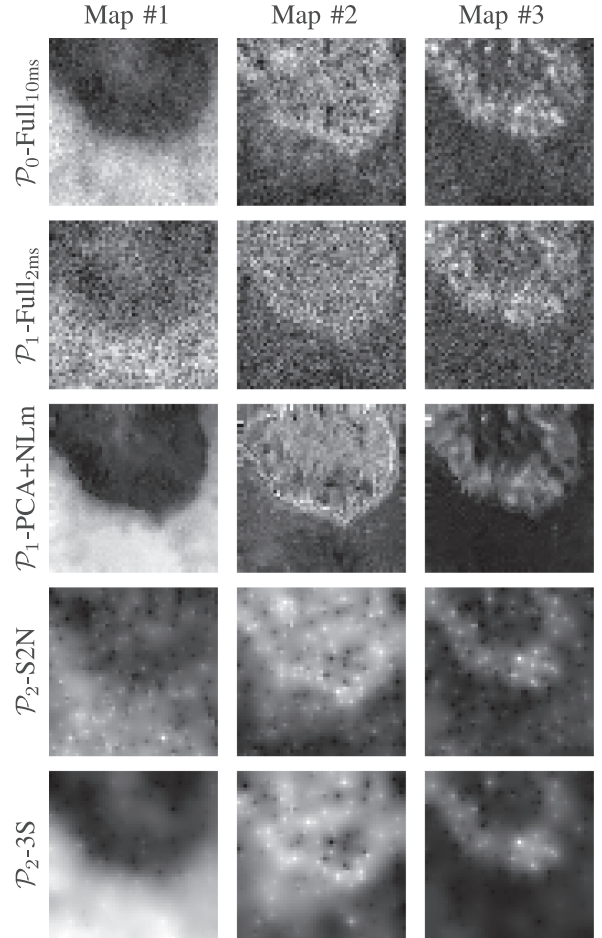


Fig. 10. Abundance maps estimated by SUNSAL.

the three most significant are displayed. Visually, acquiring and then denoising the image following protocol \mathcal{P}_1 seems to give the best results since the spectrum-image and the abundance maps show better spatial resolution, revealing for instance details in the calcification area. On the contrary, partial sampling schemes reveal high-intensity peaks in the spectrum-images and abundance maps, which lowers the spatial resolution. However the spectral features are better recovered with the partial sampling acquisition with $\Delta t = 10$ ms (i.e., under Protocol \mathcal{P}_2) and reconstruction algorithm 3S. Indeed, the splitting on the Ca $L_{2,3}$ edge is clearly visible on the spectra #2 extracted from the reconstructed spectrum-images after protocol \mathcal{P}_2 (see zoomed areas in Fig. 11). These edges are also visible for the \mathcal{P}_2 -S2N spectrum #2, but the third spectrum gives unsatisfactory results, which may come from bad parameter choice or bias caused by the nuclear norm. However, this $L_{2,3}$ splitting is not resolved for the spectrum #2 extracted from the denoised image after protocol \mathcal{P}_1 . Though it should be noted that in this case, the low number of pixels (51×51) compared to the simulated data set in Section V (100×100) makes the extraction of components by SISAL less efficient. Hence, the choice of the acquisition strategy must result of a trade-off between the required spatial and spectral resolutions.

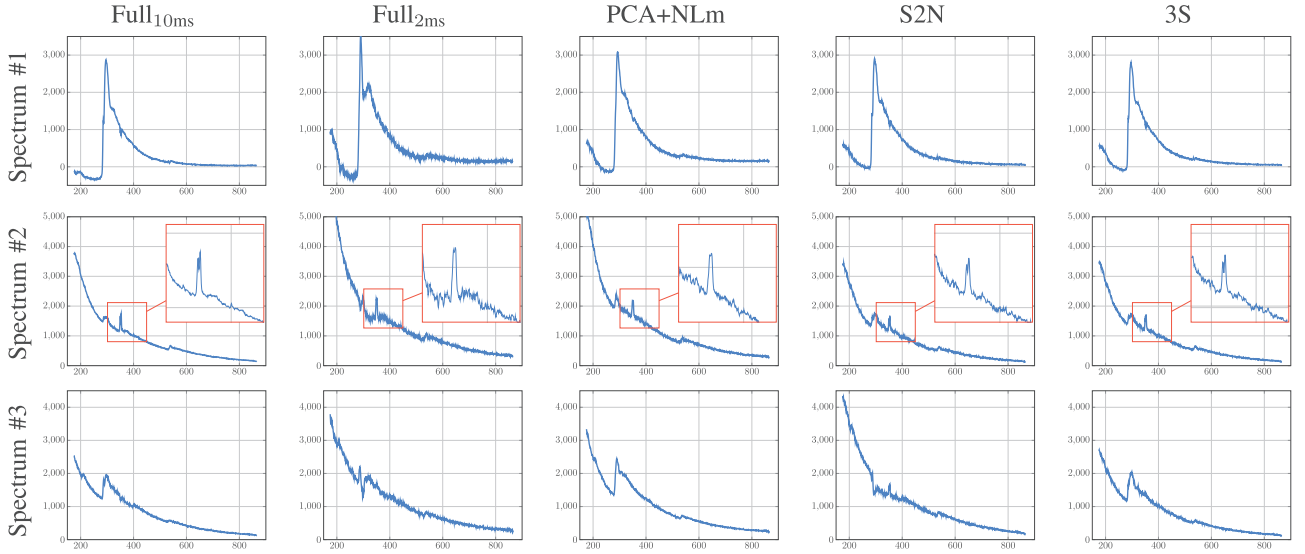


Fig. 11. Three (out of five) endmember spectra estimated by SISAL after unmixing. The axes are amplitude vs. energy loss (in eV).

VII. CONCLUSION

In this paper, we introduced new acquisition and reconstruction techniques to better preserve sensitive materials in transmission electron microscopy. The proposed methods are based on a partial acquisition of an EELS spectrum-image followed by reconstruction using a priori information. Two algorithms were proposed to conduct the reconstruction task and experiments compared this approach with a standard acquisition scheme. The results showed that the 3S algorithm performs better than S2N both in terms of quality of the reconstruction and computation time.

When comparing with a standard (full) acquisition followed by denoising, the partial sampling scheme coupled with 3S reconstruction showed better spectra estimation, while some spatial details seemed deteriorated. Note that there are other benefits of partial sampling, including a better distribution of the energy within the sample, and the ability of reconstructing dynamic (temporal) sequences. This opens new perspectives towards fast or dynamic STEM-EELS imaging.

APPENDIX A

TUNING THE S2N REGULARIZATION PARAMETERS

This paragraph discusses the choice of the regularization parameters λ_{S2N} and μ_{S2N} adjusting the spatial and spectral regularizations in the S2N objective function (2). To properly adjust the pair of parameters² (λ, μ) , and by denoting $\mathbf{Y}_{m, \mathcal{I}(n)}$ the m th component of the spectra $\mathbf{Y}_{\mathcal{I}(n)}$ measured at the spatial position indexed by $\mathcal{I}(n)$, the proposed strategy relies on the assumption

$$\mathbb{E} \left[(\mathbf{Y}_{m, \mathcal{I}(n)} - \mathbf{X}_{m, \mathcal{I}(n)})^2 \right] = \sigma^2 \quad (19)$$

which relates the noise variance and the expected reconstruction error in each energy band and for each pixel. Based on this assumption, choosing the optimal solution $\hat{\mathbf{X}}^{\text{opt}} \triangleq \hat{\mathbf{X}}(\lambda^{\text{opt}}, \mu^{\text{opt}})$

²To lighten the notations, the subscripts S2N are omitted in the sequel of this section.

among the set of solutions $\left\{ \hat{\mathbf{X}}(\lambda, \mu) \right\}_{\lambda, \mu}$ would consist in solving the problem

$$(\lambda^{\text{opt}}, \mu^{\text{opt}}) \in \underset{(\lambda, \mu) \in \mathbb{R}_+^2}{\text{argmin}} \mathcal{J}(\lambda, \mu) \quad (20)$$

with

$$\mathcal{J}(\lambda, \mu) \triangleq \left(\frac{1}{NM} \left\| \mathbf{Y}_{\mathcal{I}} - \hat{\mathbf{X}}_{\mathcal{I}}(\lambda, \mu) \right\|_{\text{F}}^2 - \hat{\sigma}^2 \right)^2 \quad (21)$$

where $\hat{\sigma}^2$ is an estimate of the noise variance (see Section III-B). To overcome the inextricability of this problem, the regularization parameters (λ, μ) are set as

$$\begin{cases} \lambda^* = c^\circ \lambda^\circ \\ \mu^* = c^\circ \mu^\circ \end{cases}$$

where λ° , μ° and c^* are successively estimated by solving

$$\lambda^\circ \in \underset{\lambda \in \mathcal{G}_\lambda}{\text{argmin}} \mathcal{J}(\lambda, 0) \quad (22)$$

$$\mu^\circ \in \underset{\mu \in \mathcal{G}_\mu}{\text{argmin}} \mathcal{J}(0, \mu) \quad (23)$$

$$c^\circ \in \underset{c \in \mathcal{G}_c}{\text{argmin}} \mathcal{J}(c\lambda^\circ, c\mu^\circ) \quad (24)$$

on the respective search grids \mathcal{G}_λ , \mathcal{G}_μ and \mathcal{G}_c dynamically adapted by dichotomy processes. The first two steps (22) and (23) adjust independently the weights of the spatial and spectral regularizations in the S2N cost function (2) respectively. The third step (24) aims at rescaling the parameters λ° and μ° to reduce the impact of considering the spatial and spectral regularizations jointly while preserving their respective proportions in (2).

APPENDIX B

ESTIMATING THE WEIGHTS AND THE SUBSPACE DIMENSION IN 3S

As mentioned earlier, the vectors $\mathbf{h}_1, \dots, \mathbf{h}_R$ spanning the subspace of interest are assumed to be sorted with re-

spect to their corresponding eigenvalues $d_1^2 \geq d_2^2 \geq \dots \geq d_M^2$ of decreasing magnitude. In particular, the latest directions are likely associated with noise. The representation vectors $\mathbf{S}_{m,:}$ ($m = 1, \dots, M$) are thus also expected to be less relevant when m increases. The choice of the weights w_m ($m = 1, \dots, M$) is driven by this finding, by interpreting them within a Bayesian framework. More precisely, let assume that the measurement matrix \mathbf{Y} in case of full spatial sampling can be related to the unknown spectrum-image \mathbf{X} through the standard denoising model

$$\mathbf{Y} = \mathbf{X} + \mathbf{E} \quad (25)$$

where \mathbf{E} is a $M \times N$ noise matrix. This measurement equation can be reformulated in the signal subspace as

$$\mathbf{H}^T \mathbf{Y} = \mathbf{S} + \mathbf{N} \quad (26)$$

with $\mathbf{N} \triangleq \mathbf{H}^T \mathbf{E}$. In (26), $\mathbf{N} = [\mathbf{N}_{1,:}^T, \dots, \mathbf{N}_{M,:}^T]^T$ denotes a perturbation matrix whose rows $\mathbf{N}_{m,:}$ ($m = 1, \dots, M$) are assumed to be independent and identically distributed (i.i.d.) according to the normal distribution

$$\mathbf{N}_{m,:} \sim \mathcal{N}(\mathbf{0}_N, \sigma^2 \mathbf{I}_N). \quad (27)$$

The rows $\mathbf{S}_{m,:}$ ($m = 1, \dots, M$) of \mathbf{S} are assumed to be i.i.d. and are assigned the following conjugate Gaussian prior

$$\mathbf{S}_{m,:} \sim \mathcal{N}(\mathbf{0}_N, \eta_m^2 \mathbf{I}_N). \quad (28)$$

Computing the maximum a posteriori (MAP) estimator of \mathbf{S} consists in solving

$$\min_{\mathbf{S}} \|\mathbf{H}^T \mathbf{Y} - \mathbf{S}\|_{\text{F}}^2 + \sum_{m=1}^M \frac{\sigma^2}{\eta_m^2} \|\mathbf{S}_{m,:}\|_2^2. \quad (29)$$

By comparing the 3S problem (3) and the MAP formulation (29), a natural choice for the weights w_m is

$$w_m = \frac{\sigma^2}{\eta_m^2}. \quad (30)$$

However, in practice the variance η_m^2 of the components $\mathbf{S}_{m,:}$ ($m = 1, \dots, M$) are unknown. To adjust these hyperparameters, one solution consists in resorting to an empirical Bayesian approach by conducting a covariance analysis of the linear model (26), which straightforwardly leads to

$$d_m^2 = \eta_m^2 + \sigma^2 \quad (31)$$

where d_m^2 ($m = 1, \dots, M$) can be approximated by the sample eigenvalues \hat{d}_m^2 estimated by PCA after the correction detailed in Appendix C. Finally, after defining the estimate $\hat{\sigma}^2$ of σ^2 as the corrected eigenvalue \hat{d}_m^2 of lowest magnitude (whose multiplicity order could be more than one), the weights are chosen as

$$w_m = \frac{\hat{\sigma}^2}{\hat{d}_m^2 - \hat{\sigma}^2} \quad (32)$$

An illustration of the dependence between \hat{d}_m^2 and w_m is depicted in Fig. 12. It is worth noting that, in the applicative context considered in this paper, the number of channels M is usually of the same order of magnitude as N . Thus the PCA conducted to estimate the eigenvalues d_1, \dots, d_M may suffer from sample

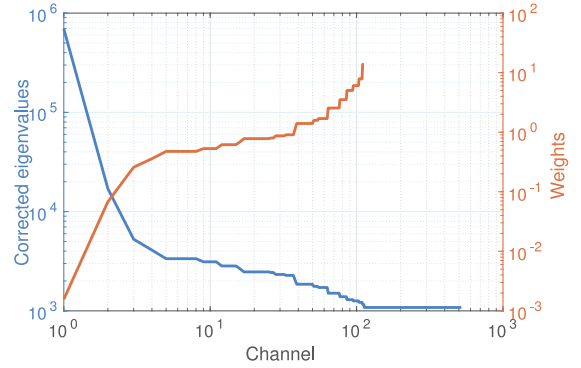


Fig. 12. A representation of the corrected eigenvalues (blue line) and the associated weights (in red). A real data spectrum image has been used here. Weights of index superior to 112 are infinity due to the equality between $\hat{\sigma}$ and \hat{d}_M^2 .

starvation and provide unreliable estimates. To improve this estimation, a correction of the PCA eigenvalue estimates is detailed in Appendix C.

Moreover, the rule (32) also suggests to define an estimate R of the signal subspace dimension R_{true} as the maximum index m such that $\hat{d}_{m+1}^2 > \hat{\sigma}^2$. For $m = R + 1, \dots, M$, the weights are set as $w_m = \infty$ since the corresponding representation vectors are expected to be composed of noise only. Hence, these components $\mathbf{S}_{m,:}$ ($m = R + 1, \dots, M$) are enforced to be null and the 3S optimization problem (3) can be reformulated to be minimized with respect to a $R \times P$ matrix.

APPENDIX C

CORRECTING THE EIGENVALUES ESTIMATED BY PCA

The rule detailed in Appendix B to adjust the 3S weights requires an estimation of the variances d_1^2, \dots, d_M^2 of the signal components in the basis spanned by \mathbf{H} . When \mathbf{H} is identified by PCA, this estimation is classically performed by conducting an eigen-decomposition of the sample covariance matrix of the observed pixel spectra, i.e.,

$$\hat{\Sigma} = \frac{1}{N} \mathbf{Y}_{\mathcal{I}} \mathbf{Y}_{\mathcal{I}}^T = \mathbf{H} \mathbf{G} \mathbf{H}^T \quad (33)$$

where $\mathbf{G} = \text{diag}(\hat{d}_1^2, \dots, \hat{d}_M^2)$. Note here that the sample eigenvalues are sorted in a decreasing order and are positive, i.e., $\hat{d}_1^2 \geq \hat{d}_2^2 \geq \dots \geq \hat{d}_M^2 \geq 0$. The main drawback of this simple estimator is the fact that it is designed to provide good estimate when the sample size N is sufficiently high compared to the observation dimension M . However, this is not the case in the considered applicative context since N is of the same order of magnitude as M . Various strategies have been proposed in the literature to improve eigenvalue estimation. To correct the sample eigenvalues, one alternative consists in resorting to the Stein estimator defined as [48]

$$\hat{d}_m^2 = \frac{\hat{d}_m^2}{1 + \frac{1}{N} \sum_{\substack{j=1 \\ j \neq m}}^M \frac{\hat{d}_m^2 + \hat{d}_j^2}{\hat{d}_m^2 - \hat{d}_j^2}}. \quad (34)$$

However, this estimator does not ensure the non-increasing property and some corrected eigenvalues \hat{d}_m^2 ($m = 1, \dots, M$)

can be negative. To alleviate this issue, an isotonic regression has been proposed in [49] as a post-processing step. This procedure usually returns a set of corrected eigenvalues with associated multiplicity orders. Moreover, an estimate $\hat{\sigma}^2$ of the noise variance σ^2 required in the weight definition (32) can be chosen as the corrected eigenvalues of lowest magnitude, whose multiplicity order is expected to be $M - R$.

REFERENCES

- [1] E. Monier *et al.*, "Reconstruction of partially sampled EELS images," in *Proc. IEEE GRSS Workshop Hyperspectral Image Signal Process., Evolution Remote Sens.*, Amsterdam, Netherlands, Sep. 2018.
- [2] R. F. Egerton, *Electron Energy-Loss Spectroscopy in the Electron Microscope*. New York, NY, USA: Springer, 2011.
- [3] R. Egerton *et al.*, "Radiation damage in the TEM and SEM," *Micron*, vol. 35, no. 6, pp. 399–409, 2004.
- [4] A. Béché *et al.*, "Development of a fast electromagnetic beam blaster for compressed sensing in scanning transmission electron microscopy," *Appl. Phys. Lett.*, vol. 108, no. 9, pp. 093103-1–093103-5, Feb. 2016.
- [5] A. Stevens *et al.*, "The potential for Bayesian compressive sensing to significantly reduce electron dose in high-resolution STEM images," *Microscopy*, vol. 63, no. 1, pp. 41–51, Feb. 2014.
- [6] A. Tararan *et al.*, "Random scanning mode for the spectroscopy of sensitive materials," in *Proc. Eur. Microsc. Congr.*, 2016.
- [7] C. Boyer *et al.*, "An algorithm for variable density sampling with block-constrained acquisition," *SIAM J. Imag. Sci.*, vol. 7, no. 2, pp. 1080–1107, Jan. 2014.
- [8] C. Quinsac, N. Dobigeon, A. Basarab, D. Kouamé, and J.-Y. Tourneret, "Bayesian compressed sensing in ultrasound imaging," in *Proc. IEEE Int. Workshop Comput. Adv. Multi-Sensor Adaptive Process.*, Dec. 2011, pp. 101–104.
- [9] J. Bobin, J. L. Starck, and R. Ottensamer, "Compressed sensing in astronomy," *IEEE J. Sel. Topics Signal Process.*, vol. 2, no. 5, pp. 718–726, Oct. 2008.
- [10] P. Binev *et al.*, "Compressed sensing and electron microscopy," in *Proc. Model. Nanoscale Imag. Electron Microsc.* Springer, 2012, pp. 73–126.
- [11] M. Bertalmio *et al.*, "Image inpainting," in *Proc. Annu. Conf. Comput. Graph. Interactive Tech.*, New York, NY, USA, 2000, pp. 417–424.
- [12] N. Zhao, Q. Wei, A. Basarab, N. Dobigeon, D. Kouamé, and J.-Y. Tourneret, "Fast single image super-resolution using a new analytical solution for $\ell_2 - \ell_2$ problems," *IEEE Trans. Image Process.*, vol. 25, no. 8, pp. 3683–3697, Aug. 2016.
- [13] Q. Wei, J. Bioucas-Dias, N. Dobigeon, and J.-Y. Tourneret, "Hyperspectral and multispectral image fusion based on a sparse representation," *IEEE Trans. Geosci. Remote Sens.*, vol. 53, no. 7, pp. 3658–3668, Jul. 2015.
- [14] A. Stevens *et al.*, "Applying compressive sensing to TEM video: A substantial frame rate increase on any camera," *Adv. Struct. Chem. Imag.*, vol. 1, p. 10, Aug. 2015.
- [15] Z. Saghi *et al.*, "Reduced-dose and high-speed acquisition strategies for multi-dimensional electron microscopy," *Adv. Struct. Chem. Imag.*, vol. 1, no. 1, Dec. 2015.
- [16] X. Qu *et al.*, "Accelerated NMR spectroscopy with low-rank reconstruction," *Angewandte Chemie Int. Ed.*, vol. 54, no. 3, pp. 852–854, Jan. 2015.
- [17] T. F. Chan *et al.*, "Total variation wavelet inpainting," *J. Math. Imag. Vis.*, vol. 25, no. 1, pp. 107–125, Jul. 2006.
- [18] A. Chambolle, "An algorithm for total variation minimization and applications," *J. Math. Imag. Vision*, vol. 20, no. 1/2, pp. 89–97, Jan. 2004.
- [19] D. Mücke-Herzberg *et al.*, "Practical implementation of compressive sensing for high resolution STEM," *Microsc. Microanal.*, vol. 22, no. S3, pp. 558–559, Jul. 2016.
- [20] D. Mücke-Herzberg *et al.*, "A Compressive Sensing based acquisition design for quantitative ultra-low dose high-resolution imaging and spectroscopy in the STEM," in *Proc. Eur. Microsc. Congr.*, 2016, pp. 324–325.
- [21] A. Béché *et al.*, "Compressed sensing for beam sensitive materials imaging in Scanning Transmission Electron Microscopy," in *Proc. Eur. Microsc. Congr.*, Weinheim, Germany, Dec. 2016, pp. 340–341.
- [22] A. Stevens *et al.*, "Compressive STEM-EELS," *Microsc. Microanal.*, vol. 22, no. S3, pp. 560–561, Jul. 2016.
- [23] H. Zhang, W. He, L. Zhang, H. Shen, and Q. Yuan, "Hyperspectral image restoration using low-rank matrix recovery," *IEEE Trans. Geosci. Remote Sens.*, vol. 52, no. 8, pp. 4729–4743, Aug. 2014.
- [24] V. Chayes *et al.*, "Pre-processing and classification of hyperspectral imagery via selective inpainting," in *Proc. IEEE Int. Conf. Acoust., Speech Signal Process.*, Mar. 2017, pp. 6195–6199.
- [25] M. Golbabaee and P. Vanderghyest, "Hyperspectral image compressed sensing via low-rank and joint-sparse matrix recovery," in *Proc. IEEE Int. Conf. Acoust., Speech Signal Process.*, Mar. 2012, pp. 2741–2744.
- [26] A. Chen, "The inpainting of hyperspectral images: A survey and adaptation to hyperspectral data," in *Proc. SPIE*, vol. 8537, 2012, pp. 8537-1–8537-8.
- [27] K. Bredies *et al.*, "Total generalized variation," *SIAM J. Imag. Sci.*, vol. 3, no. 3, pp. 492–526, 2010.
- [28] T. Pock *et al.*, "Tgv-fusion," in *Rainbow of computer science*. New York, NY, USA: Springer, 2011, pp. 245–258.
- [29] P. Rodríguez and B. Wohlberg, "A generalized vector-valued total variation algorithm," in *Proc. IEEE Int. Conf. Image Process.*, Nov. 2009, pp. 1309–1312.
- [30] P. Addesso *et al.*, "Hyperspectral image inpainting based on collaborative total variation," in *Proc. IEEE Int. Conf. Image Process. (ICIP)*, Sep. 2017, pp. 4282–4286.
- [31] N. Dobigeon *et al.*, "Linear and nonlinear unmixing in hyperspectral imaging," *Data Handling Sci. Technol.*, vol. 30, pp. 185–224, Jan. 2016.
- [32] N. Dobigeon and N. Brun, "Spectral mixture analysis of EELS spectrum-images," *Ultramicroscopy*, vol. 120, pp. 25–34, Sep. 2012.
- [33] J. M. Bioucas-Dias *et al.*, "Hyperspectral unmixing overview: Geometrical, statistical, and sparse regression-based approaches," *IEEE J. Sel. Topics Appl. Earth Observ. Remote Sens.*, vol. 5, no. 2, pp. 354–379, Apr. 2012.
- [34] B. Recht *et al.*, "Guaranteed minimum-rank solutions of linear matrix equations via nuclear norm minimization," *SIAM Rev.*, vol. 52, no. 3, pp. 471–501, Jan. 2010.
- [35] Q. Wei, N. Dobigeon, and J.-Y. Tourneret, "Bayesian fusion of multi-band images," *IEEE J. Sel. Topics Signal Process.*, vol. 9, no. 6, pp. 1117–1127, Sep. 2015.
- [36] Q. Wei, N. Dobigeon, and J.-Y. Tourneret, "Fast fusion of multi-band images based on solving a Sylvester equation," *IEEE Trans. Image Process.*, vol. 24, no. 11, pp. 4109–4121, Nov. 2015.
- [37] A. Beck and M. Teboulle, "A fast iterative shrinkage-thresholding algorithm for linear inverse problems," *SIAM J. Imag. Sci.*, vol. 2, no. 1, pp. 183–202, Jan. 2009.
- [38] J.-F. Cai *et al.*, "A singular value thresholding algorithm for matrix completion," *SIAM J. Optim.*, vol. 20, no. 4, pp. 1956–1982, 2010.
- [39] N. Dobigeon and N. Brun, "Spectral mixture analysis of EELS spectrum-images," *Ultramicroscopy*, vol. 120, pp. 25–34, 2012.
- [40] C. Verrier *et al.*, "Topography, composition and structure of incipient Randall plaque at the nanoscale level," *J. urology*, vol. 196, no. 5, pp. 1566–1574, 2016.
- [41] J. M. P. Nascimento and J. M. B. Dias, "Vertex component analysis: a fast algorithm to unmix hyperspectral data," *IEEE Trans. Geosci. Remote Sens.*, vol. 43, no. 4, pp. 898–910, Apr. 2005.
- [42] A. Buades *et al.*, "A non-local algorithm for image denoising," in *Proc. Int. Conf. Comput. Visi. Pattern Recognit.*, 2005, vol. 2, pp. 60–65.
- [43] L. Zhuang and J. Bioucas-Dias, "Fast hyperspectral image denoising and inpainting based on low-rank and sparse representations," *IEEE J. Sel. Topics Appl. Earth Observ. Remote Sens.*, vol. 11, no. 3, pp. 730–742, Mar. 2018.
- [44] J. M. Bioucas-Dias, "A variable splitting augmented Lagrangian approach to linear spectral unmixing," in *Proc. IEEE GRSS Workshop Hyperspectral Image Signal Process., Evol. Remote Sens.*, 2009, pp. 1–4.
- [45] N. Keshava, "Distance metrics and band selection in hyperspectral processing with applications to material identification and spectral libraries," *IEEE Trans. Geosci. Remote Sens.*, vol. 42, no. 7, pp. 1552–1565, Jul. 2004.
- [46] Y. Sohn and N. S. Rebello, "Supervised and unsupervised spectral angle classifiers," *Photogrammetric Eng. Rem. Sens.*, vol. 68, no. 12, pp. 1271–1282, 2002.
- [47] J. M. Bioucas-Dias and M. A. Figueiredo, "Alternating direction algorithms for constrained sparse regression: Application to hyperspectral unmixing," in *Proc. IEEE GRSS Workshop Hyperspectral Image Signal Process., Evol. Remote Sens.*, 2010, pp. 1–4.
- [48] X. Mestre, "Improved estimation of eigenvalues and eigenvectors of covariance matrices using their sample estimates," *IEEE Trans. Inf. Theory*, vol. 54, no. 11, pp. 5113–5129, Nov. 2008.
- [49] S. Lin and M. Perlman, "A Monte Carlo comparison of four estimators for a covariance matrix," *Multivariate Anal.*, vol. 6, pp. 411–429, 1985.



Étienne Monier was born in Champagne, France, in 1992. He received the M.S. degree in applied physics teaching in 2015 and the M.S. degree in communication systems in 2016 from the Paris-Saclay University, Paris, France. He is currently working toward the Ph.D. degree at the National Polytechnic Institute of Toulouse, Toulouse, France. He also received an engineers degree from the Ecole Normale Supérieure de Cachan, Cachan, France, in 2016. His research interests include signal and image processing and multi-band data acquisition.



Marta De Frutos received the B.S. degree from Universidad autónoma de Madrid, Madrid, Spain, in 1988, and the Ph.D. degree from Université Paris XI (currently Université Paris-Saclay), Orsay, France, in 1992. She is currently a Research Associate (CRCN) with the Laboratoire de Physique des Solides, Centre National de la Recherche Scientifique, Université Paris-Saclay (Orsay, France). Her main research interests include application of EELS spectroscopy for biology and medicine.



Thomas Oberlin was born in Lyon, France, in 1988. He received the M.S. degree in applied mathematics from the Université Joseph Fourier, Grenoble, France, in 2010, as well as an engineer's degree from the Grenoble Institute of Technology, Grenoble, France. In 2013, he received the Ph.D. degree in applied mathematics from the University of Grenoble, Saint-Martin-d'Hères, France. In 2014, he was a Postdoctoral fellow in signal processing and medical imaging with Inria Rennes, France. Since September 2014, he is an Assistant Professor with the INP

Toulouse-ENSEEIH and the IRIT Laboratory, University of Toulouse, in Toulouse, France. His research interests include adaptive and multiscale methods for signal and image processing, and in particular linear time-frequency analysis, synchrosqueezing, empirical mode decomposition, sparse regularization for inverse problems, and its applications in signal/image processing and medical imaging (e.g., in EEG).



Marcel Tencé was born in Normandy, France, in 1956. He received the Engineering degree in electronics from ESAO Angers, France. In 1987, he received the Ph. D. degree in signal processing from Université Paris-Sud, Orsay, France. Since 1981, he has been an Engineer with the Laboratoire de Physique des Solides Université Paris-Sud/CNRS. He developed Electron Energy Loss Spectroscopy techniques in a Scanning Transmission Electron Microscope. With the improvement in computer capabilities, detector performances, data set has grown from single spec-

trum to multidimensional

imaging techniques.



Nathalie Brun received the Engineering degree from Ecole Centrale de Lyon, Écully, France, in 1987, and the Ph.D. degree from Université Paris XI (currently Université Paris-Saclay), Orsay, France, in 1991. She is currently a Research Associate (CRCN) with the Laboratoire de Physique des Solides, Centre National de la Recherche Scientifique, Université Paris-Saclay (Orsay, France). Her main research interests include application of image and signal processing to EELS data.



Nicolas Dobigeon received the Ph.D. degree in signal processing from the National Polytechnic Institute of Toulouse, Toulouse, France, in 2012. He was a Postdoctoral Researcher with the Department of Electrical Engineering and Computer Science, University of Michigan, Ann Arbor, MI, USA, from 2007 to 2008. Since 2008, he has been with the National Polytechnic Institute of Toulouse, currently with a Professor position. His research interests include statistical signal and image processing.