



**HAL**  
open science

# Climate Change Impact on the Mineralization of Karst Groundwater in a Mediterranean Context

Mahmoud Khaska, Corinne Le Gal La Salle, Patrick Verdoux

► **To cite this version:**

Mahmoud Khaska, Corinne Le Gal La Salle, Patrick Verdoux. Climate Change Impact on the Mineralization of Karst Groundwater in a Mediterranean Context. *Procedia Earth and Planetary Science*, 2017, 17, pp.976-979. 10.1016/j.proeps.2017.01.059 . hal-02178811

**HAL Id: hal-02178811**

**<https://hal.science/hal-02178811>**

Submitted on 21 May 2024

**HAL** is a multi-disciplinary open access archive for the deposit and dissemination of scientific research documents, whether they are published or not. The documents may come from teaching and research institutions in France or abroad, or from public or private research centers.

L'archive ouverte pluridisciplinaire **HAL**, est destinée au dépôt et à la diffusion de documents scientifiques de niveau recherche, publiés ou non, émanant des établissements d'enseignement et de recherche français ou étrangers, des laboratoires publics ou privés.



Distributed under a Creative Commons Attribution - NonCommercial - NoDerivatives 4.0 International License

15th Water-Rock Interaction International Symposium, WRI-15

## Climate change impact on the mineralization of karst groundwater in a Mediterranean context

Mahmouh Khaska<sup>a,1</sup>, Corinne Le Gal La Salle<sup>a</sup>, Patrick Verdoux<sup>a</sup>

<sup>a</sup>CHROME-Laboratoire GIS-EA 7352 – Unimes, 150 rue Georges Besse, Parc Scientifique Georges Besse, 30035 NIMES, France

---

### Abstract

The aim of the current study is to investigate the geochemical evolution of groundwater mineralisation and the inter-connexion between shallow karst aquifer and deep aquifer groundwater. The studied aquifer system is considered as the principal outlet of the south-eastern end of the northern Pyrenean overthrust, with a volumetric flow reaching 2000 m<sup>3</sup>/h. Water at the emergence is characterized by high mineralisation and temperature relative to groundwater at the regional scale. An eight years survey was carried out at the outlet based on a geochemical and isotopic approach. Surprisingly spring water mineralisation increases with increasing precipitations. <sup>87</sup>Sr/<sup>86</sup>Sr ratios of sampled water range from 0.7085 to 0.7090. This ratio contrasts with that of the aquifer matrix constituted by Mesozoic marine carbonates and underlying evaporites. Furthermore, these ratios are significantly higher than in groundwater impacted by current or ancient seawater at the regional scale. These high <sup>87</sup>Sr/<sup>86</sup>Sr ratios may reflect the dissolution of <sup>87</sup>Sr rich minerals such as the Triassic salty clay deposits present at depth. The good correlation between <sup>87</sup>Sr/<sup>86</sup>Sr and TDS confirm the hypothesis of a contribution of deep saline and <sup>87</sup>Sr rich water. The temporal variations in mineralization and Sr isotopic signature may be explained by high recharge inducing a higher hydraulic pressure on the deep aquifer and an increased contribution of deep saline groundwater to the spring water. The data acquired on this aquifer system allow predicting the evolution of mineralization with climate trends where decreasing recharge would induce a decreasing salinity at the spring outlet.

© 2017 Published by Elsevier B.V. This is an open access article under the CC BY-NC-ND license

(<http://creativecommons.org/licenses/by-nc-nd/4.0/>).

Peer-review under responsibility of the organizing committee of WRI-15

*Keywords:* salinization; coastal aquifer; climate change; strontium isotopes; Triassic deposits

---

### 1. Introduction

In the context of the global climate change, increasing water demand and the progressive reduction of water resources in the Mediterranean basin<sup>1-3</sup>, understanding the salinization process is essential to the management of

---

\* Corresponding author. Tel.: +33-04 66 70 99 75.

E-mail address: [mahmoud.khaska@unimes.fr](mailto:mahmoud.khaska@unimes.fr)

groundwater resources especially in coastal environments. Indeed, as reported in the annual IPCC report<sup>4</sup> and other studies<sup>5-8</sup>, climate scenarios for the Mediterranean basin clearly indicate decreasing precipitation rate, increasing temperature and a rise in sea level.

In the Mediterranean context, previous studies investigated the origin of salinity in coastal karst aquifers<sup>9-13</sup>. The influence of deep saline water has been demonstrated on isolated coastal karst aquifer located along the Gulf of Lion<sup>11</sup>, resulting from interaction of paleo-seawater with the carbonate matrix. In a similar hydrogeological and geological context demonstrated the influence of deep saline thermal waters on coastal aquifer<sup>9</sup>. More recently, the influence of deep saline water on the shallow karst aquifers at the northern Pyrenean thrust was demonstrated<sup>10</sup>.

In this context, the aim of this study is to investigate the potential impact of climate change variations during the last decade on the mineralization of groundwater at the karst outlet. Through a long term monitoring investigation (between 2001 and 2015) of a major karst system located in the Gulf of Lion continental margin, we assessed the evolution of mineralization at the outlet in relation with the precipitation amount.

The studied karst system is located in an overthrust area composed by Mesozoic carbonate formations. In the studied area, an impermeable clayey-marly unit separates two Jurassic limestone formations, referred to as the upper and lower karst units. The aquifer formations are underlined by the evaporitic levels of the Triassic formations and are covered by a thick impermeable Tertiary formation. Autumn and winter precipitations constitute the main recharge source to the karst system through fissured and fractured limestone largely outcropping in the studied context.

## 2. Material and methods

Samples were filtered in the field through a 0.45  $\mu\text{m}$  MF-Millipore membrane filter on a Sartorius poly-carbonate filter holder, then stored below 4 °C in 60mL HDPE bottles pre-cleaned with hot 10%  $\text{HNO}_3$  and deionized water.  $^{87}\text{Sr}/^{86}\text{Sr}$  ratios were determined at the GIS laboratory, using a TRITON Ti thermal ionization mass spectrometer with an internal normalization for isotope fractionation to an  $^{86}\text{Sr}/^{88}\text{Sr}$  ratio of 0.1194. Chloride concentration was obtained from the national database (ADES). Rainfall records are provided by Météo-France for the period between 2001 and 2014.

## 3. Results and discussion

The studied spring water shows a relatively high temperature at the emergence, significantly higher (2 to 4 °C) than the average annual temperature of regional karst water. The mineralization, ranging from 800 to 1200 mg/L, is also higher than that of the local and regional karst water<sup>10</sup>. Chloride concentrations vary between 135 to 351 mg/L. Surprisingly, the mineralization of the spring water is higher during wet period and lower during dry period. The variation in the mineralization can be observed both at a seasonal and inter-annual scale. This is illustrated in Fig. 1 (a and b) showing a 4-year running mean of precipitation and chloride concentration record at the studied spring water. The low mineralization level is associated with low  $^{87}\text{Sr}/^{86}\text{Sr}$  ratio close to that of the local karst groundwater, while, higher mineralization is associated with high  $^{87}\text{Sr}/^{86}\text{Sr}$  ratio (Fig. 2b). The high  $^{87}\text{Sr}/^{86}\text{Sr}$  probably results from a long term water-rock interaction with clayey Triassic deposits at depth in high temperature conditions. To confirm the signature of the deep end-member, experimental batches were carried out to recreate the deep groundwater end-member<sup>10</sup> by bringing to equilibrium shallow groundwater with Triassic Marls at varying temperature (Fig. 2a). The results display an increase in  $^{87}\text{Sr}/^{86}\text{Sr}$  ratio with increasing temperature from 0.7082 at 25°C to 0.7092 at 150 °C<sup>10</sup>.

This may suggest the release of  $^{87}\text{Sr}$  from k-feldspars or mica mineral contained in deep Triassic formations. The  $^{87}\text{Sr}/^{86}\text{Sr}$  ratios obtained at high temperature is coherent with the deep groundwater end member (Fig. 2a).

The simultaneous variation of the mineralization (as Cl concentration) at the spring water with the amounts of precipitation allows proposing a mechanism for the groundwater mineralization. The increasing chloride concentrations and  $^{87}\text{Sr}/^{86}\text{Sr}$  ratios with increasing recharge suggests the mobilization of salts water from the lower levels of the aquifer bearing formations.

The studied aquifer system is shown as the combination of two circulation types: i) a shallow water circulation system in the upper karst unit, underlined by impermeable clayey marls, and ii) a deep water circulation system in the lower karst unit underlined by the salty Triassic deposits. Uprising flow the lower karst unit to surface may be driven by a high hydraulic pressure on the lower karst unit due to high precipitation on the limestone plateau. Uprising return flow would be favoured through major faults, fractures and thrust faults.

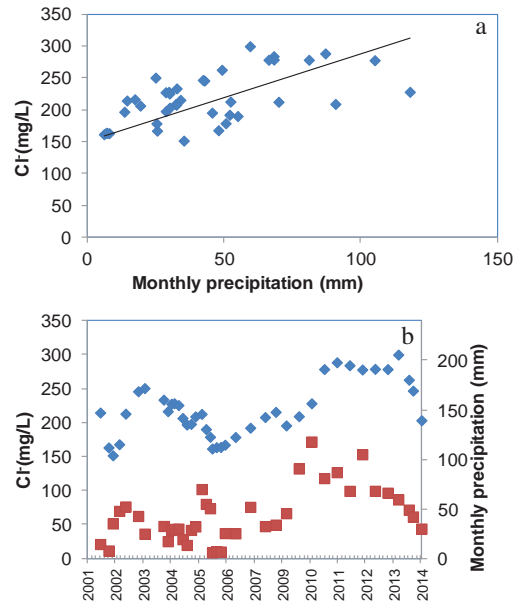


Fig. 1. (a) Correlation of chloride (blue diamond) concentrations with precipitation (Red Square); (b) variations of chloride and precipitations between 2001 and 2014.

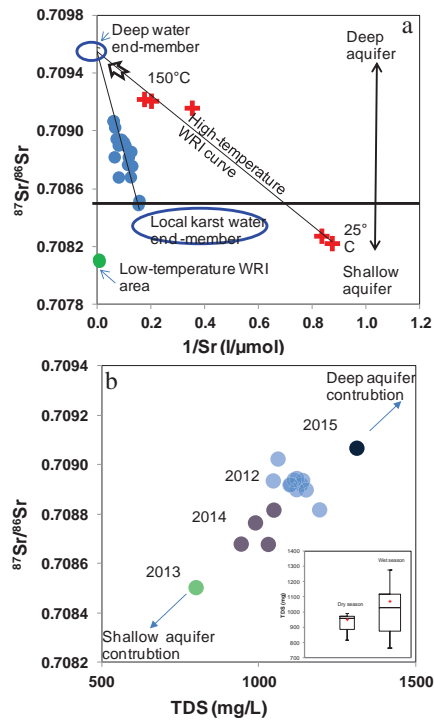


Fig. 2. (a) Sr mixing diagram showing the increase of  $^{87}\text{Sr}/^{86}\text{Sr}$  of the studied aquifer (blue round) toward a radiogenic end member similar to that obtained by experimental batch at high temperature<sup>10</sup> (Red cross), (b)  $^{87}\text{Sr}/^{86}\text{Sr}$  evolution with the TDS values (dates of sampling were reported in diagram).

#### 4. Conclusion

In the studied aquifer system, the spring water TDS values increase with increasing precipitation and show a positive linear tendency with the  $^{87}\text{Sr}/^{86}\text{Sr}$  ratios. The leaching of the salty clayey Triassic deposits at depth and high temperature seems to be the major process contributing to the mineralisation of the spring water which is affected by a mixing process with shallow aquifer system. Accessorily, the studied aquifer system provides information on geochemical processes on water rock interaction at deep within aquifers. Finally, the linear relationship that exists between the groundwater mineralisation and precipitation amount will allow predicting the diminution of mineralisation of groundwater in this aquifer system as a consequence of the planned diminution of meteoric recharge in the next 50 years.

#### References

1. Boithias L, Acuña V, Vergoños L, Ziv G, Marcé R, Sabater S. Assessment of the water supply:demand ratios in a Mediterranean basin under different global change scenarios and mitigation alternatives. *Sci. Total Environ.* **2014**, 567–577.
2. Skliris N, Sofianos S, Lascaratos A. Hydrological changes in the Mediterranean Sea in relation to changes in the freshwater budget: A numerical modelling study. *J. Mar. Syst.* **2007**, 65, 400–416.
3. UNESCO. *Global water resources under increasing pressure from rapidly growing demands and climate change, according to new UN World Water Development Report*; 2012; Vol. Tom I.
4. IPCC. *Climate Change, Adaptation, and Vulnerability*; 2014; Vol. 24.
5. Ertürk A, Ekdal A, Gürel M, Karakaya N, Guzel C, Gönenç E. Evaluating the impact of climate change on groundwater resources in a small Mediterranean watershed. *Sci. Total Environ.* **2014**, 499, 437–47.
6. Taylor R G, Scanlon B, Döll P, Rodell M, van Beek R, Wada Y, Longuevergne L, Leblanc M, Famiglietti J S, Edmunds M, Konikow L, Green T. R, Chen J, Taniguchi M, Bierkens M. F. P, MacDonald A, Fan Y, Maxwell R. M, Yechieli Y, Gurdak J. J, Allen, D. M, Shamsudduha, M, Hiscock, K, Yeh P. J.-F, Holman, I, Treidel, H. Ground water and climate change. *Nat. Clim. Chang.* **2012**, 3, 322–329.
7. Kundzewicz Z. W, Döll P. Will groundwater ease freshwater stress under climate change? *Hydrol. Sci. J.* **2009**, 54, 665–675.
8. Ranjan P, Kazama S, Sawamoto M. Effects of climate change on coastal fresh groundwater resources. *Glob. Environ. Chang.* **2006**, 16, 388–399.
9. Aquilina L, Ladouche B, Doerfliger N, Seidel J. L, Bakalowicz M, Dupuy C, Le Strat P. Origin, evolution and residence time of saline thermal fluids (Balaruc springs, southern France): Implications for fluid transfer across the continental shelf. *Chem. Geol.* **2002**, 192, 1–21.
10. Khaska M, Le Gal La Salle C, Videau G, Flinois J.-S, Frappe S, Team A, Verdoux P. Deep water circulation at the northern Pyrenean thrust: Implication of high temperature water–rock interaction process on the mineralization of major spring water in an overthrust area. *Chem. Geol.* **2015**, 419, 114–131.
11. Khaska M, Le Gal La Salle C, Lancelot J, Team A. S. T. E. R.; Mohamad A, Verdoux P, Noret A.; Simler, R. Origin of groundwater salinity (current seawater vs. saline deep water) in a coastal karst aquifer based on Sr and Cl isotopes. Case study of the La Clape massif (southern France). *Appl. Geochemistry* **2013**, 37, 212–227.
12. Pennisi M, Bianchini G, Muti A, Kloppmann W, Gonfiantini R. Behaviour of boron and strontium isotopes in groundwater-aquifer interactions in the Cornia Plain (Tuscany, Italy). *Appl. Geochemistry* **2006**, 21, 1169–1183.
13. Sánchez-Martos F, Pulido-Bosch A, Molina-Sánchez L, Vallejos-Izquierdo A. Identification of the origin of salinization in groundwater using minor ions (Lower Andarax, Southeast Spain). *Sci. Total Environ.* **2002**, 297, 43–58.