



HAL
open science

Dosage compensation throughout the *Schistosoma mansoni* lifecycle: specific chromatin landscape of the Z chromosome

Marion Picard, Beatriz Vicoso, David Roquis, Ingo Bulla, Ronaldo de Carvalho Augusto, Nathalie Arancibia, Christoph Grunau, Jérôme Boissier, Celine Cosseau

► To cite this version:

Marion Picard, Beatriz Vicoso, David Roquis, Ingo Bulla, Ronaldo de Carvalho Augusto, et al.. Dosage compensation throughout the *Schistosoma mansoni* lifecycle: specific chromatin landscape of the Z chromosome. *Genome Biology and Evolution*, 2019, 11 (7), pp.1909-1922. 10.1093/gbe/evz133/5527757 . hal-02177468

HAL Id: hal-02177468

<https://hal.science/hal-02177468>

Submitted on 9 Jul 2019

HAL is a multi-disciplinary open access archive for the deposit and dissemination of scientific research documents, whether they are published or not. The documents may come from teaching and research institutions in France or abroad, or from public or private research centers.

L'archive ouverte pluridisciplinaire **HAL**, est destinée au dépôt et à la diffusion de documents scientifiques de niveau recherche, publiés ou non, émanant des établissements d'enseignement et de recherche français ou étrangers, des laboratoires publics ou privés.

FULL TITLE

Dosage compensation throughout the *Schistosoma mansoni* lifecycle: specific chromatin landscape of the Z chromosome.

SHORT TITLE

Chromatin landscape of schistosome Z dosage compensation.

KEYWORDS

Dosage compensation, Chromatin landscape, Histone modifications, Female heterogamety, *Schistosoma mansoni*

AUTHORS

Marion AL Picard^{1,2,°}, Beatriz Vicoso², David Roquis¹, Ingo Bulla¹, Ronaldo de Carvalho Augusto¹, Nathalie Arancibia¹, Christoph Grunau¹, Jérôme Boissier¹, Céline Cosseau¹

AUTHOR INFORMATION

¹ Université de Perpignan Via Domitia, IHPE UMR 5244, CNRS, IFREMER, Université de Montpellier, F-66860 Perpignan, France.

² Institute of Science and Technology Austria, Am Campus 1, 3400 Klosterneuburg, Austria

[°]Corresponding author: marion.picard@ird.fr

AUTHOR CONTRIBUTION

Data collection: M.A.L.P., N.A. and D.R.; data analyses: M.A.L.P., B.V., I.B., R.C.A. and C.C.; data interpretation: M.A.L.P., B.V. and C.C.; writing and conceptualization: M.A.L.P., B.V., C.G., J.B. and C.C.; funding: J.B and C.C.

ABSTRACT

Differentiated sex chromosomes are accompanied by a difference in gene dose between X/Z-specific and autosomal genes. At the transcriptomic level, these sex-linked genes can either lead to expression imbalance, or gene dosage can be compensated by epigenetic mechanisms and results into expression level equalization. *Schistosoma mansoni* has been previously described as a ZW species (*i.e.* female heterogamety, in opposition to XY male heterogametic species) with a partial dosage compensation, but underlying mechanisms are still unexplored. Here, we combine transcriptomic (RNA-Seq) and epigenetic data (ChiP-Seq against H3K4me3, H3K27me3, and H4K20me1 histone marks) in free larval cercariae and intra-vertebrate parasitic stages. For the first time, we describe differences in dosage compensation status in ZW females, depending on the parasitic status: free cercariae display global dosage compensation while intra-vertebrate stages show a partial dosage compensation. We also highlight regional differences of gene expression along the Z chromosome in cercariae, but not in the vertebrate stages. Finally, we feature a consistent permissive chromatin landscape of the Z chromosome in both sexes and stages. We argue that dosage compensation in schistosomes is characterized by chromatin remodeling mechanisms in the Z-specific region.

INTRODUCTION

Sex determination systems are very diverse and can involve genetic and/or epigenetic based mechanisms (Bachtrog et al. 2014). Genetic sex determination has been widely studied and often involves well-differentiated pairs of sex chromosomes: X and Y in male heterogametic systems, or Z and W in female heterogametic systems. Morphological and gene content differences arise between the sex-specific Y/W and the shared X/Z chromosomes after their evolution from an ancestral pair of autosomes (Charlesworth et al. 2005; Charlesworth 1991). Successive events of recombination suppression (Rice 1987; Bergero & Charlesworth 2009) result in the accumulation of deleterious mutations and lead to the degeneration of the Y/W heterochromosome (Engelstadter 2008). Consequently, the sex carrying the degenerated Y/W harbors a certain number of genes in a single X/Z-linked copy. In the absence of mechanisms to buffer expression levels, such monosomy in a diploid genome is expected to induce detrimental effects on finely tuned gene networks (Veitia 2005). Mechanisms of gene expression regulation have evolved independently across eukaryotes to compensate for this gene dose imbalance, and are grouped together under the name “dosage compensation”. In the case of global dosage compensation, the overall expression level of monosomic genes on the heterochromosome (*i.e.* X/Z-specific genes) is equal to the overall diploid expression level of autosomal genes (*i.e.* X/AA or Z/AA ratio of 1, “A” standing for the autosomal expression) (Vicoso & Bachtrog 2009). Conversely, the gene dose can be only partially compensated and the average expression of monosomic X/Z-specific genes will then be below the average expression of the diploid autosomes. This X/Z-specific gene expression value is typically not equal to half the dose of autosomal genes, as would be expected in the total absence of compensation, but instead reaches 60 to 80% of autosomal expression (*i.e.* X/AA or Z/AA ratio of 0.6 to 0.8). This is thought to reflect a combination of general buffering

mechanisms (Stenberg et al. 2009) and/or the individual upregulation of dosage-sensitive sex-linked genes, *i.e.* a “gene-by-gene” mechanism of compensation (Mank 2009). Global dosage compensation was initially thought to be not only (i) the rule, but also (ii) the preserve of XY systems. Both considerations are actually controversial, and many studies have challenged this canonical view. First, global compensation is not an absolute rule among XY species: initially, “chromosome-wide” compensation was described in both vertebrate and invertebrate XY model species, as well as a variety of non-model organisms (e.g. *Caenorhabditis elegans*: Lau & Csankovszki 2015; *Drosophila*: Georgiev et al. 2011; Pea aphid: Jaquiéry et al. 2013; Hemipteran: Pal & Vicoso 2015; Mammals: Nguyen & Disteché 2006; Livebearer fishes: Darolti et al. 2019; and other vertebrates, reviewed in Graves 2016). Thereafter, the multiplicity of studies carried in a broad range of species actually highlighted a lack of global dosage compensation in vertebrates as well as in non-vertebrates (Xiong et al. 2010; Hurst et al. 2015; Mank 2013 and Gu & Walter 2017 for review). Instead other strategies were observed, such as a gene-by-gene mechanism with an increase of only some X-linked genes (Albritton et al. 2014; Pessia et al. 2012; Lin et al. 2012), the decreased expression of autosomal genes (Julien et al. 2012), or duplication-translocation of X-linked genes to autosomes (Hurst et al. 2015). Second, global compensation is not the preserve of XY systems: recent studies have shown that non-model ZW species also display total equalization of expression between Z-specific genes and autosomes (Lepidoptera: Huylmans et al. 2017; Gu & Walter 2017; Walters & Hardcastle 2011; Kiuchi et al. 2014); *Artemia franciscana* crustacean species: Huylmans et al. 2019). This is in contradiction to earlier studies in which only partial compensation was documented in many ZW female heterochromatic clades: birds (Uebbing et al. 2015; Naurin et al. 2011; Itoh et al. 2007; Wolf & Bryk 2011), arthropods (Harrison et al. 2012; Mahajan & Bachtrog 2015), snakes (Vicoso et al. 2013), flat fish

Cynoglossus semilaevis (Chen et al. 2014) and metazoan parasites of the genus *Schistosoma* (Vicoso & Bachtrog 2011; Picard et al. 2018).

Schistosomes are blood flukes responsible for schistosomiasis, an infectious disease affecting more than 230 million people worldwide (Colley et al. 2014, for review). The model species *Schistosoma mansoni* has a complex life cycle, characterized by (i) clonal multiplication in a freshwater snail of the *Biomphalaria* genus, the intermediate host; and (ii) sexual reproduction in a definitive vertebrate host (*i.e.* a primate or rodent species). The parasite's eggs are released in freshwater *via* the feces. Free-living larvae (*miracidia*) hatch out and infect the mollusk intermediate host, transforming into sporocysts. Sporocyst clonal multiplication inside the mollusk ultimately leads to thousands of infective cercariae, which are in turn released into fresh water. Definitive host penetration occurs through the epidermis and is followed by drastic morphological and physiological transformations: (i) within two hours, the free-living larvae become obligatory endoparasitic schistosomula; and (ii) after two to five weeks within the definitive host, these schistosomula develop from 150 μm juvenile sexually undifferentiated individuals into one-centimeter adults. *Schistosoma* is the only genus displaying separate sexes among flatworms (Combes 1991; Basch 1990). Sex is genetically determined, with ZZ males and ZW females (Grossman et al. 1981), but no apparent phenotypic sexual dimorphism exists from the egg to the early stages of schistosomula. Phenotypic differences between males and females (*i.e.* sexual dimorphism) appear only in late intra-vertebrate stages (Loker & Brant 2006). In addition, male and female worms remain immature (*i.e.* sexually non-functional) until pairing. In particular, mated females undergo extensive morphological changes and develop their reproductive organs (Erasmus 1973; Neves et al. 2005).

Schistosomes, and particularly *S. mansoni*, have well differentiated sex chromosomes: the W chromosome is mostly heterochromatic and carries many repetitive sequences (Lepesant et al. 2012; Protasio et al. 2012; Portela et al. 2010); 1,067 Z-specific genes have been identified thus far (Picard et al. 2018; Protasio et al. 2012). These Z-specific genes are consistently male-biased in expression, which was initially interpreted as absence of a global mechanism of dosage compensation (Vicoso & Bachtrog 2011). It was recently suggested that instead schistosomes have partially upregulated their Z chromosome in response to gene loss on the W (Picard et al. 2018), but that this upregulation occurred in both sexes (thereby partially balancing dosage in females, but maintaining the male-bias in expression). The conclusions of these studies were limited by several drawbacks. First, only older, vertebrate-infecting, stages were considered. Gene balance is thought to be most crucial in the earlier stages of development because of a higher number of functional interactions (Mank & Ellegren 2009; Artieri et al. 2009; Davis et al. 2005; Cutter & Ward 2005), and missing these early stages could lead to an underestimation of the extent to which compensation occurs. Similarly, male-biased expression can be due to genes with male-specific functions, which should largely be absent before the onset of sexual differentiation. Characterizing the sex-bias of Z-specific genes throughout development is therefore crucial to fully understand the dynamics of dosage compensation in this group. Second, fully distinguishing between local and global mechanisms of compensation requires an understanding of the molecular processes at work. In particular, well-studied chromosome-wide mechanisms of dosage compensation are characterized by global and extensive changes in the epigenetic landscape of the affected sex chromosome (Lucchesi et al. 2005; Lucchesi 2018). For instance, active chromatin marks are strongly enriched on the *Drosophila* male X, whereas the inactivated mammalian X chromosome of females is characterized by DNA methylation and widespread repressive

chromatin marks (Lucchesi et al. 2005; Brockdorff & Turner 2015). On the chicken Z chromosome, a local and female specific hyperacetylation of the fourth histone (H4K16Ac) has been described (Bisoni et al. 2005). Apart from this study, the detailed characterization of sex-linked histone chromatin marks is entirely lacking in ZW species, severely limiting our mechanistic understanding of dosage equalization in these groups.

Here, we systematically assess gene expression regulation along the Z chromosome of *S. mansoni* by combining transcriptomic (RNA-seq) and epigenomic (ChIP-seq) data. We focus on three different developmental stages: (1) cercariae (RNA-seq and ChIP-seq): these free larvae are the last fully sexually undifferentiated stage before host penetration; (2) schistosomula (RNA-seq): the schistosomula were at an advanced stage of development, but lacked phenotypic dimorphism (Picard et al. 2016); (3) immature worms (RNA-seq and ChIP-seq): male and female parasite displaying sexual dimorphism, but sexually non-mature as they were not mated.

RESULTS

1. Different levels of gene expression equalization throughout development.

Gene expression was analyzed by using published RNA-Seq data from male and female *S. mansoni* of three developmental stages, characterized by different parasitic status and levels of sexual differentiation (Picard et al. 2016): cercariae, schistosomula, and immature worms (Figure 1A). Other stages such as *miracidia* or eggs were excluded since it is not possible to distinguish males and females at this phase. To assess dosage compensation, we compared both the Z-to-autosome ratio within each sex (Z:AA in females or ZZ:AA in males), and the female-to-male ratio between sexes ($Z(F:M)/A(F:M)$) (Table 1). Such comparisons support global dosage compensation if the female Z:AA ratio and the

Z(F:M)/A(F:M) ratio are equal to one; lower ratios support a lack of global dosage compensation. Different minimum expression thresholds were applied, and strongly sex-biased genes (>2-fold difference between the sexes) were excluded, as the presence of genes with sex-specific functions can also lead to male-biased expression of sex chromosomes, even in the presence of global dosage compensation (Huylmans et al. 2017). Gene expression ratios and their level of significance are detailed in Table 1 for the three stages and six different methodological conditions. In order to minimize noise but keep a reasonable sample size, we focused on results obtained with a minimum expression threshold of RPKM>1 and excluding genes with a sex-bias greater than 2-fold (Sample sizes are reported in Supplementary Table 1), but qualitative patterns generally hold for other filtering procedures.

As observed before (Vicoso & Bachtrög 2011; Picard et al. 2018), the female-to-male ratio of expression was always significantly lower on the Z than on the autosomes, and this seemed to be due to both reduced Z:AA expression in females (Z:AA from 0.75 to 1.05) and an excess of ZZ:AA expression in males (ZZ:AA from 1.07 to 1.75) (Picard et al. 2018). However, there were important differences between the developmental stages. First, the Z(F:M)/A(F:M) ratio ranged from 0.60 to 0.90 (Table 1C). While part of this variation was driven by the different filtering procedures, in every case the value was closer to 1 for cercariae, consistent with more extensive dosage compensation in early development. For instance, for Z-specific genes with RPKM>1 and no strong sex-bias, Z(F:M)/A(F:M) was equal to 0.81, 0.70 and 0.64 in cercariae, schistosomula and immature worms respectively, with significant differences between the free larval stage cercariae and the intra-vertebrate stages (p-value<0.0001, Figure 1B).

This difference in the extent of dosage equalization was also apparent within one sex. In the females, discrepancies were observed depending on the parasitic status and the filtering

method: for RPKM>0, after sex-bias filtering, the Z-to-autosome ratio (Z:AA) ranged from 0.75 in female schistosomula (lower than 1, consistent with partial dosage compensation) to 1.05 in female cercariae (equalized ratio, typical of dosage global compensation), and was not always significant from 1 (Table 1A). This seemed to be largely driven by the dichotomy between cercariae and intra-vertebrate stages (Figure 1C): when considering genes with RPKM values above 1, and after filtering for sex-biased genes, Z-specific genes and autosomes displayed an equalized expression in female cercariae (Z:AA=1.00 for RPKM>1, Z:AA=1.03 for RPKM>5), but not in female schistosomula or immature worms (Z:AA=0.76 and 0.87 for RPKM>1, Z:AA=0.90 and 0.80 for RPKM>5). While the specific numbers varied, cercariae had the highest female Z:AA expression ratio for all but one filtering procedures (RPKM>0 and no removal of strongly sex-biased genes), generally supporting the more extensive upregulation of expression of Z-linked genes in females at this stage. Within males, the Z-to-autosome ratio (ZZ:AA) was higher in all studied conditions (ranging from 1.07 to 1.75) although the level of significance varied depending on the filtering procedure (Table 1B). For instance, considering genes with RPKM>1 and no strong sex-bias, the ZZ:AA ratios are 1.07, 1.12 and 1.27 for cercariae, schistosomula and immature worms respectively (Figure 1D).

In summary, this first transcriptomic analysis of Z-specific and autosomal genes throughout schistosome development showed that: (i) the over-expression of the male Z-specific genes was found consistently in the three stages; (ii) the female Z-to-autosome ratio was around 1 in cercariae, as expected for global dosage compensation; (iii) the female Z-to-autosome ratio was around 0.8 in the intra-vertebrate stages, as expected when partial dosage compensation occurs.

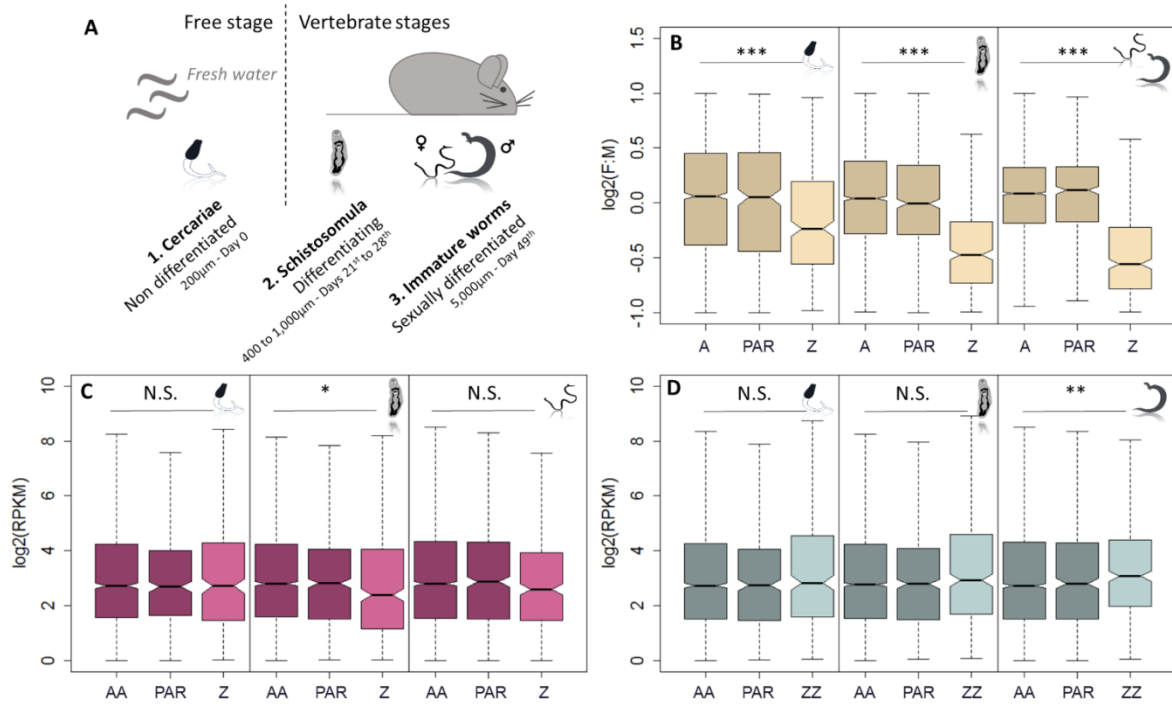


FIGURE 1. Gene expression level according to sex, developmental stage, and genomic location. Three developmental stages of the parasite are shown (A): cercariae are free larvae without any sexual dimorphism (1); schistosomula represent an intra-vertebrate stage, with ongoing sexual differentiation but no phenotypic sexual dimorphism (2); immature worms are sexually differentiated but sexually non-functional as they did not mate (3). Expression of autosomal genes (“A”, dark shade), pseudo-autosomal genes (“PAR”, dark shade), and Z-specific genes (“Z”, light shade) is represented considering female-to-male ratio (“F:M”) (B), or independently within females (C) and males (D). Only genes with expression RPKM>1, and a female-to-male fold change lower than 2 (sex-bias filtering) are taken into account (n=3,741 in cercariae; n=5,636 in schistosomula; n=5,657 in immature worms). The Z-to-autosome expression ratio for each sex (Z:AA for female, and ZZ:AA for male), and the corresponding female-to-male ratio (Z(F:M)/A(F:M)) are detailed in Table 1 (“RPKM > 1 - sex-bias filtered”). Asterisks show the level of significance for each of these comparisons (Wilcoxon test): *P-value<0.05, **P-value<0.001, ***P-value<0.0001.

TABLE 1. Ratio of gene expression between sexes, and between genomic location within each sex; according to developmental stages, and methodological filters. The Z-to-autosome ratio are shown for females “Z:AA” (A) and males “ZZ:AA” (B) in cercariae (Cerc.), schistosomula (Som.) and immature worms (Ad.). Female-to-male ratio of the Z-specific genes and of the autosomes are then compared for the three same stages “Z(F:M)/A(F:M)” (C). The filter on sex-bias excludes genes with a fold change of expression above 2 in both directions (male:female or female:male). The level of significance for each comparison is indicated by the asterisks (Wilcoxon test): *P-value<0.05, **P-value<0.001, ***P-value<0.0001.

| | | A) ♀ Z : AA | | | B) ♂ ZZ : AA | | | C) Z(F:M) / A(F:M) | | |
|-------------------------------|---------|-------------|------|------|--------------|------|------|--------------------|------|------|
| | | Cerc. | Som. | Ad. | Cerc. | Som. | Ad. | Cerc. | Som. | Ad. |
| RPKM > 0 | Ratio | 1.02 | 0.94 | 1.04 | 1.74 | 1.66 | 1.75 | 0.60 | 0.66 | 0.66 |
| | P-value | N.S. | N.S. | N.S. | *** | *** | *** | *** | *** | *** |
| RPKM > 0 sex-bias filtered | Ratio | 1.05 | 0.75 | 1.00 | 1.48 | 1.10 | 1.34 | 0.82 | 0.76 | 0.66 |
| | P-value | N.S. | N.S. | N.S. | ** | N.S. | * | *** | *** | *** |
| RPKM > 1 | Ratio | 0.83 | 0.78 | 0.83 | 1.24 | 1.28 | 1.29 | 0.68 | 0.61 | 0.59 |
| | P-value | * | ** | * | * | *** | *** | *** | *** | *** |
| RPKM > 1 sex-bias filtered | Ratio | 1.00 | 0.76 | 0.87 | 1.07 | 1.12 | 1.27 | 0.81 | 0.70 | 0.64 |
| | P-value | N.S. | * | N.S. | N.S. | N.S. | ** | *** | *** | *** |
| RPKM > 5 | Ratio | 0.92 | 0.76 | 0.82 | 1.23 | 1.42 | 1.24 | 0.74 | 0.62 | 0.60 |
| | P-value | N.S. | * | * | * | *** | *** | *** | *** | *** |
| RPKM > 5 sex-bias filtered | Ratio | 1.03 | 0.90 | 0.80 | 1.22 | 1.41 | 1.17 | 0.90 | 0.72 | 0.64 |
| | P-value | N.S. | N.S. | * | N.S. | * | * | ** | *** | *** |

2. Regional variation of dosage compensation along the Z-specific region.

In some species which display partial dosage compensation, the female-to-male ratio has been shown to vary along the Z-chromosome, with some regions fully compensated while others are not compensated at all (e.g. *Gallus gallus* (Melamed & Arnold 2007), *Cynoglossus semilaevis* (Shao et al. 2014)). To investigate potential regional variation in *Schistosoma mansoni*, we investigated local patterns of gene expression by using sliding windows of 50 genes along the Z chromosome (Figure 2). The Z-specific part which was previously described as discontinuous in the version 5.2 of the genome (Protasio et al. 2012), was considered here as three Z-specific regions named Z1, Z2 and Z3. They were respectively defined by their coordinates, as follow: Z1 from 3,550 to 13,340 Kb; Z2 from 13,860 to 19,650 Kb; and Z3 from 23,230 to 30,820 Kb. (Protasio et al. 2012).

As expected, the sliding window analysis revealed a female-to-male ratio oscillating around 1 in the pseudo-autosomal region for all stages ($\log_2(\text{F:M})$ close to 0; Figure 2, right panel). In the three Z-specific regions, the female-to-male expression ratio oscillated around 0.7 in schistosomula and 0.6 immature worms, consistent with homogeneous but partial compensation (Figures 2D & 2F; Supplementary Figures 1 and 2). However, in cercariae, the female-to-male expression ratio was closer to 1. When looking at each Z-specific region individually, the female-to-male expression ratio was significantly lower in the Z1 and Z3 regions compared to the pseudo-autosomal region (PAR) in all three developmental stages (Figure 2 left panel; values and significance in Supplementary Table 2). On the other hand, the Z2 region displayed a higher female-to-male ratio in cercariae, and this was not significantly different from the PAR ($Z2(\text{F:M})/\text{PAR}(\text{F:M})=0.88$; Figure 2A). In schistosomula and immature worms, the same Z2 was significantly more male-biased in expression than the PAR ($Z2(\text{F:M})/\text{PAR}(\text{F:M})=0.71$ and 0.62 respectively; Figures 2C & 2E).

Consistent with this, male and female expression levels overlapped in the Z2 region of cercariae; while in the Z1, female expression was lower than male expression, consistent with less complete compensation (Figure 2B). In the Z3 region, and still in cercariae, we found a narrow window of overlapping male and female expression at the beginning of the region, whereas the remaining part displayed lower expression in females. This could be meaningful since Z3 shows an intermediate $Z(\text{F:M})/\text{PAR}(\text{F:M})$ ratio ($0.76^{***}<0.81^*<0.88^{\text{N.S.}}$ for $Z1<Z3<Z2$), which could be driven by these smaller-scale regional differences (Figure 2B). In the intra-vertebrate stages, the three Z-specific regions differed clearly from the pseudo-autosomal ones by presenting consistently reduced expression in females (Figure 3D and 3F). The female and male gene expression ratios for each Z-specific region are shown in Supplementary Table 2 and the patterns of expression within each sex are illustrated in

Supplementary Figure 3. Considering gene-by-gene comparison between stages, intra-vertebrate stages displayed more similar expression patterns than cercariae (Supplementary Figure 4).

In summary, this transcriptomic analysis along the Z-chromosome highlighted (i) local variation of the dosage compensation across Z-specific regions in cercariae; (ii) partial and consistent dosage compensation all along the three Z-specific regions in schistosomula and immature worms.

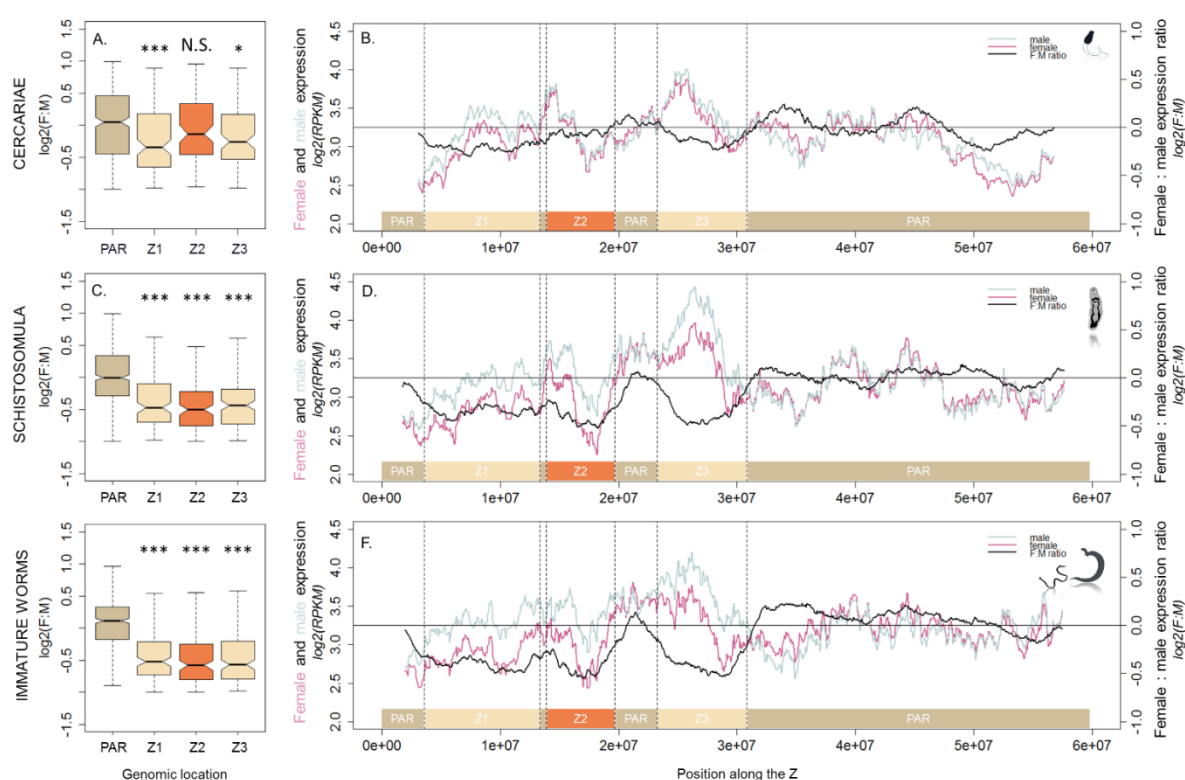


FIGURE 2. Gene expression pattern according to the location along the Z-chromosome, and the developmental stages. The female-to-male expression ratio (F:M) is represented for the three Z-specific regions defined in the version 5.2 of the genome (Z1 in light beige, Z2 in orange, and Z3 in light beige) and the pseudo-autosomal region (PAR in dark beige) for cercariae (A), schistosomula (C), and immature worms (E). For each stage, gene expression pattern for female (in pink) and male (in blue) is shown along the Z by sliding window of 50 genes (B, D, F). The thick black line represents the female-to-male expression ratio by sliding window of 50 genes. Only genes with expression RPKM>1 and a sex-bias fold change <2 are shown. Asterisks show the level of significance of Z-to-PAR comparisons (Wilcoxon rank sum test with continuity correction): ****P*-value<0.0001, N.S = non-significant differences. Z1-to-PAR ratio values are: 0.76, 0.72, 0.64; Z2-to-PAR ratio values are: 0.88, 0.71, 0.62; Z3-to-PAR ratio values are: 0.81, 0.74, 0.62 for cercariae, schistosomula and immature worms respectively. Other ratios are shown in Supplementary Table 2.

3. Z-specific chromatin landscape in cercariae and immature worms to elucidate shared or sex-specific mechanisms.

Previous studies on dosage compensation in model organisms indicate that chromatin structure plays a key role in the regulation of this evolutionary mechanism (Lucchesi et al. 2005; Lucchesi 2018). As the main transcriptomic differences were observed between the free stage cercariae and the intra-vertebrate stages, we focused our epigenetic study on cercariae and immature worms. We analyzed immunoprecipitation assays with antibodies targeting three histone marks: (i) H3K4me3, associated with active promoter and transcription start site, and depleted in the heterochromatic inactivated X-chromosome of mammals (Marks et al. 2009; O'Neill et al. 2008); (ii) H3K27me3, a repressive mark associated with polycomb, poised transcription, and enriched in the inactivated X-chromosome of mammals (Lucchesi et al. 2005); and (iii) H4K20me1, associated with non-permissive chromatin in *Caenorhabditis* dosage compensation (Vielle et al. 2012). We compared the enrichment of these histone marks in a sex-specific manner, on Z-specific genes, pseudo-autosomes, and autosomes (using chromosome 1 as a proxy for the autosomal chromatin landscape, as its transcriptomic pattern appeared to be representative of autosomes, see Supplementary Figure 5). For each of these genomic locations, the average enrichment profile of all annotated genes was performed around the transcriptional start site (TSS): from 1,000 base pairs (bp) upstream to 5,000 bp downstream.

We observed that the average profile of the three studied marks was specific for each genomic location in both cercariae and immature worms (Figure 3, Supplementary Figures 6 to 8). Z-specific genes were enriched for H3K4me3 in both stages and sexes, especially between the transcriptional start site (TSS) and position +2,000 bp (Figure 3, upper panel). H3K27me3 was depleted from Z-specific genes upstream of the TSS and along the

transcription unit in both stages and sexes (Figure 3, lower panel). Finally, H4K20me1, for which only female data was available, displayed a stronger enrichment on chromosome 1 and on the pseudo-autosomal region than on Z-specific genes in female cercariae (Percentage of maximum difference: 63,3%, Supplementary Figure 8, Supplementary Table 5). However, this difference diminished between stages, with an increased enrichment on the Z-specific region in immature females bringing it closer to the autosomal level (Percentage of maximum difference: 30 %, Supplementary Figure 8, Supplementary Table 5). Differences between chromosomal regions within a developmental stage and sex were tested for the three analyzed histone marks: the most significant difference was consistently observed between either Z-specific genes and chromosome 1, or between Z-specific and pseudo-autosomal genes (Kolmogorov-Smirnov two sample tests, Supplementary Tables 3 to 5). This supports the idea that the chromatin landscape is more similar between the autosomes and the pseudoautosomal region of *S. mansoni*, whereas Z-specific genes display a singular epigenetic landscape. The depletion of the two “repressive” marks (H3K27me3 and H4K20me1) and the enrichment of the “permissive” H3K4me3 mark suggest a chromatin structure prone to enhanced gene expression specifically in this Z-specific region.

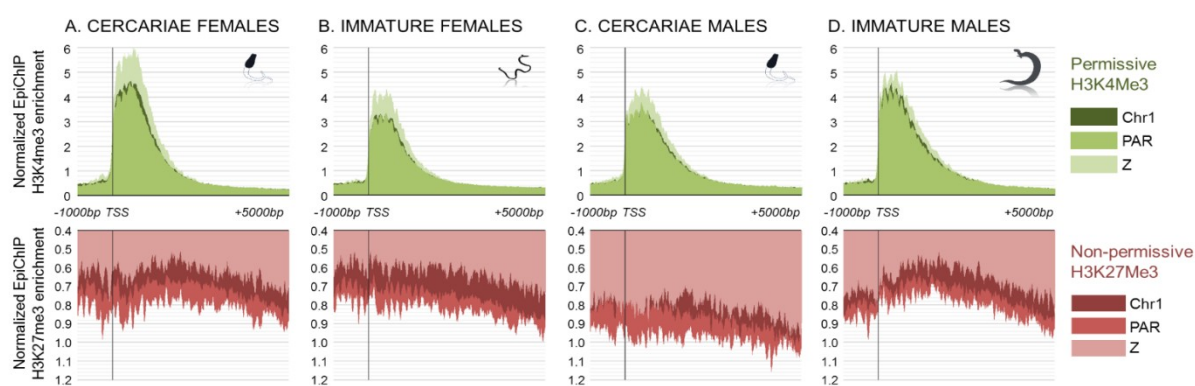


FIGURE 3. Average H3K4me3 and H3K27me3 enrichment profile according to sex, developmental stage, and genomic location. X axis represents the position in base pairs (bp) relative to the Transcriptional Start Site of the genes (TSS, position 0). Y axis represents the normalized average enrichment of reads obtained after a Chromatin Immuno-Precipitation targeting the “permissive” mark H3K4me3 (in green) and the “non-permissive” H3K27me3 (in red), in female cercariae (A) and immature worms (B), or male cercariae (C) and

immature worms (D). The EpiChIP enrichment has been calculated around the TSS for chromosome 1 as proxy for autosomes (Chr1, dark shade), for the pseudo-autosomal region of sex chromosomes (PAR, medium shade), and for chromosome Z-specific region of sex chromosomes (Z, light shade). For each of these genomic locations, we show the average result of the profiles obtained for each coding sequence. Each profile has been normalized with the same average enrichment of reads obtained after a Chromatin Immuno-Precipitation without antibody. The experiment was performed in duplicates in males and triplicate in females. Epichip profiles showing standard error at each position are shown in Supplementary Figures 6 and 7. The percentage of maximum difference between genomic regions are shown in Supplementary Tables 3 and 4: all differences are statistically significant (P-value < 0.001, Kolmogorov-Smirnov two sample tests).

In summary, our epigenetic analysis highlighted the specialized chromatin landscape of the Z-specific region, which appeared to be more permissive than that of the autosomal regions in both sexes and stages. This modified chromatin state of the Z-specific region likely promotes enhanced expression compared to the autosomes, independent of the stage and sex, consistent with the first part of our study. The analysis of H4K20me1 in females further showed a differential enrichment of this histone mark on Z-specific genes between cercariae and adults, which may be related to the differences that we observe in the extent of female dosage compensation between the two stages.

DISCUSSION

We provide here the first combined transcriptomic and epigenetic analysis of Z chromosome dosage compensation through three developmental stages of *S. mansoni* parasite. This work highlights three important aspects of gene expression regulation on sex chromosomes: (i) A strong upregulation of female expression of Z-linked genes in the free larval stage cercariae, consistent with complete dosage compensation, but not in intra-vertebrate stages schistosomula and immature females that display partial dosage compensation only; (ii) Local variations of the female-to-male expression ratio along the Z chromosome; (iii) Differences in chromatin structures between Z-specific regions and autosomes which may support the enhanced expression of both male and female Z chromosomes.

1. Change in dosage compensation status following host penetration.

Our RNA-seq analysis detects a global hyper-transcription of Z-specific genes in both sexes of *S. mansoni*, consistent with the intermediate stage of compensation previously reported in schistosomula and adult worms (Vicoso & Bachtrog 2011; Picard et al. 2018). In both studies, the female upregulation of expression only partially resolved the imbalance between the Z chromosome and the autosomes. However, we show here that this partial compensation does not apply to earlier developmental stages of *S. mansoni*: in females, enhanced transcriptional levels of the Z-specific genes results in a Z-to-A ratio of around 1 in cercariae (compared to ~0.8 in the vertebrate stages).

The dosage compensation status has been shown to be tissue- and development-specific within a same species (Huylmans et al. 2017; Deng et al. 2014; Lott et al. 2011; Mank & Ellegren 2009). In particular, germ/stem cells might need to overcome a special challenge regarding dosage compensation, as (i) genome wide reprogramming is expected to occur and erase epigenetic marks responsible for maintaining the chromatin state necessary for compensation (Sangrithi & Turner 2018) and/or (ii) dosage compensation mechanisms may act as developmental regulators by targeting autosomal genes involved in patterning and morphogenesis (Valsecchi et al. 2018). In schistosomes, larval stages display particular features regarding their content in such cells: in the intermediate host, sporocysts consist of totipotent stem cells undergoing intense clonal multiplication (Cort et al. 1954); in cercariae, embryonic stem cell specific combination of histone marks have been described (Wang et al. 2013; Roquis et al. 2015). This chromatin signature disappears after host penetration, signifying important changes in gene expression regulation (Roquis et al. 2015). Therefore, a specific cell type content could explain the shift in the dosage compensation status observed

between the larval stage and the intra-vertebrate phase. Further studies are needed to disentangle the role of those cells in the observed pattern, and the examination of dosage compensation status during earlier larval stages certainly deserves further attention. Technological advances such as single cell/single individual RNA sequencing should in the future allow for such analyses.

2. Local variation of male-bias in cercariae: different evolutionary stages of the dosage compensation mechanisms?

Over-expression of Z-specific genes compared to the level of autosomal gene expression has been recently described in *S. mansoni* intra-vertebrate stages (Picard et al. 2018). Here, we further show that this over-expression also occurs in the undifferentiated and free-living stage cercariae, and is therefore a consistent feature maintained throughout the parasite life cycle. This uncommon feature has been described in adult floor beetles (whole body sample) which is a XY male heterogametic system (Prince et al. 2010). In this species, the male hemizygous X chromosome is fully compensated, and females display XX/AA ratio superior to 1. It has been also recently reported in the young XY plant system *Silene latifolia* (Muyle et al. 2018). Such pattern was theorized by Gu and Walter as the “type IV” of sex chromosome dosage compensation, with complete equalization of the X/Z-to-autosome ratio in the heterogametic sex, but no dosage balance between sexes as the homogametic sex exhibit Z/X hypertranscription relative to autosomes (Gu & Walter 2017). These observations can be interpreted as an example of the first step of the Ohno’s hypothesis, suggesting that the establishment of dosage compensation process evolved in a two-step process (Ohno 1967; Charlesworth 1996; Vicoso & Bachtrog 2009; Bachtrog et al. 2011; Mank 2013): (i) First, Z- or X- linked genes became upregulated in both sexes. This would restore expression of the

single X or Z chromosome in the heterogametic sex to the diploid level that existed before degradation of the Y or W, but would result in too much gene expression in the homogametic sex. (ii) Therefore, secondarily, a downregulation of Z or X-linked gene expression would evolve in the homogametic sex to restore the correct Z- or X-to-autosome ratio. But many studies recently challenge this theory. For instance, there is no convincing evidence that the X chromosome is globally up-regulated in both mammals (Julien et al. 2012), and *C. elegans* (Albritton et al. 2014). In *C. elegans*, the X chromosomes in the XX homogametic individuals are downregulated, leading to dosage balance between the sexes but not dosage compensation in XO males. In placental mammals, no global X upregulation was observed, unlike in marsupials (Julien et al. 2012, Whitworth & Pask 2016). Thus, even though complete X-chromosome inactivation has traditionally been interpreted as the second step of the process (Brockdorff & Turner 2015), the relevance of the Ohno's hypothesis to the evolution of placental mammal dosage compensation is in fact controversial (e.g. Gu & Walters, 2017; Pessia et al. 2014, Lin et al., 2012; Nguyen & Disteché, 2006; Vicoso & Bachtrog, 2009a; Mank, 2013).

Our results suggest that *S. mansoni* may have followed an “Ohno-like” evolutionary trajectory for dosage compensation, which allowed the Z-specific region to enhance its expression to reach that of autosomal genes in females, but under which males somehow avoid the necessity of complete counter-compensation of this Z chromosome hypertranscription. This raises the question of what the current status for the evolution of dosage compensation is in *S. mansoni*: an intermediate or a stable state?

Regional variation of the Z dosage compensation has been described in birds, where some dosage-compensated genes are concentrated in a region of the short arm of the Z chromosome, near the male hypermethylated (MHM) locus (Melamed & Arnold 2007;

Wright et al. 2015). Full dosage compensation has also been described in a restricted chromosomal region in pseudo-male testes of *Cynoglossus semilaevis*, whereas the rest of the Z chromosome is partially compensated (Shao et al. 2014). It has been proposed that such local variations in gene regulation along the sex chromosome could be based on regional age following sex-linkage, including in XY species such as stickleback (Schultheiß et al. 2015). In *S. mansoni*, two evolutionary strata of different ages were recently described (Supplementary Figure 9) (Picard et al. 2018). If partial up-regulation of Z-specific genes in both sexes represents an intermediate step in the evolution of dosage compensation, we may expect that the older stratum will be closer to balanced dosage between males and females than the younger one. In the previous study and in ours, no difference in gene expression could be detected between these strata in intra-vertebrate stages. In cercariae, however, the section of the Z that is closest to complete compensation (region Z2) is indeed part of the older Z-specific evolutionary stratum that is shared between African and Asian schistosomes (Supplementary Figure 9, Picard et al. 2018). It is therefore likely that dosage compensation is still evolving in *S. mansoni*, and that the Z-specific region which displays equalized gene expression between the sexes actually represents the final stage of dosage compensation evolution in this species.

3. The specific chromatin features of the Z-specific regions may account for the hyper-transcription of Z-specific genes in both sexes.

Various mechanisms have evolved to regulate the gene dosage at the functional level. In fully compensated organisms, these mechanisms are all based on the modulation of chromatin accessibility of the sex-specific regions (Lucchesi et al. 2005; Lucchesi 2018; Ercan 2015). In mammals, transcriptional regulation is achieved by the progressive depletion

of histone active marks concomitant to the enrichment of histone repressive mark H3K27me3 through the action of the X-inactive specific transcript (Xist) (Brockdorff & Turner 2015). In *Caenorhabditis elegans* (XX/XO system), the hermaphrodite two X chromosomes display halved transcription level to match X expression to that of males (XO). Reduced transcription is allowed by a complex of proteins called the dosage compensation complex (DCC) resulting in a depletion of histone active marks and enrichment of histone repressive marks (Lau & Csankovszki 2015). In *Drosophila melanogaster* (XX/XY system), the transcription of the single male X chromosome is doubled by an overall increase of the chromatin accessibility by the MSL complex (Male Specific Lethal) (Lucchesi et al. 2005). More recent work performed on the pea aphid has also shown an enhanced chromatin accessibility of the X chromosome of males which may account for dose correction of those X-linked genes in this species (Richard et al. 2017).

We present here an overview of the chromatin structure by ChIP-Seq analysis targeting three modified histones in different developmental stages of *S. mansoni*, and highlight different chromatin patterns between autosomal and Z-linked genes. We found that H3K27me3 and H4K20me1 were depleted in the Z-specific region relative to the pseudo-autosomal (PAR) region of Z chromosome and to autosomal regions. Reversely, we found that H3K4me3 was enriched in the Z-specific region of the Z chromosome relative to the PAR and to autosomal regions. The role of H4K20me1 in gene regulation has remained a mystery because of its contribution to both gene activation and gene repression in different contexts (Beck et al. 2012). However, in the context of chromosome wide regulatory mechanism for dosage compensation, this mark has been shown to be enriched in the inactive chromosome of female mammals (Kelsey et al. 2015) and enriched in both hermaphrodite X chromosomes in *Caenorhabditis*, resulting in reduction of transcription level (Bian et al. 2017). Here, changes

in H4K20me1 between female cercariae and adults are specifically observed for the Z-specific region, arguing in favor of a role of this mark in dosage compensation status switch between the stages. H3K27me3 is a clear repressive mark enriched in heterochromatic X-inactivated chromosome of mammals (Kelsey et al. 2015) and H3K4me3 was reported to be depleted during X-inactivation in female embryonic stem cells (O'Neill et al. 2008). Given the depletion for both repressive marks concomitant to enrichment of the active H3K4me3 mark in the Z-specific region, we suggest that a global regulation of the chromatin accessibility of the Z-linked regions occurs in order to over-express the Z-linked genes and compensate for gene dose defect in the single Z-specific region of females. This could be further addressed using chromatin accessibility assay which could evidence an open chromatin state such as those performed in the pea aphids which support their enhanced X overexpression (Richard et al. 2017).

Local variation in dosage compensation is also supported by chromatin based event such as those described in *Cynoglossus semilaevis* where an increase in cytosine methylation density occurs in the compensated region (Shao et al. 2014). In *Gallus gallus*, the implication of the MHM non-coding RNA and subsequent enrichment of H4K16ac around the MHM locus in females allow a full compensation of this region (Melamed & Arnold 2007). Female-specific non-coding RNAs have been shown to be expressed in schistosome larval stages (Lepesant et al. 2012) and their implication in changes in chromatin states, regulation of gene expression and, more specifically, in dosage compensation mechanisms, certainly deserve further attention.

CONCLUSION

Until recently, dosage compensation in ZW female-heterogametic species was thought to be partial and to occur at a gene-specific level. Recent studies in non-model organisms have challenged this canonical view. In line with them, our study brings a new insight by showing developmental changes in dosage compensation status in female schistosomes. From global compensation in undifferentiated free larvae, to partial compensation after host penetration and the onset of sexual differentiation. Despite this developmental variation, our study highlights a robust over-expression of the Z chromosome throughout *S. mansoni* life cycle, independently of the sex. We show how this might be mediated by an enhanced chromatin accessibility of the Z-specific regions, giving a first insight into *S. mansoni* chromatin pattern in relation to dosage compensation. Our epigenetic study paves the way towards the construction of an evolutionary chromatin landscape of the parasite's dosage compensation. Investigating more combined histone modifications and non-coding RNAs appears to be the next step to understand both developmental changes and finer variations in gene expression along the Z chromosome.

METHODS

Publicly available RNA-Seq and ChiP-Seq reads

This study is mainly based on publicly available data that were previously generated in our laboratory. Transcriptomic data (*i.e.* total RNA isolation followed by single-read 50 nucleotides Illumina sequencing) for both sexes in cercariae, schistosomula (stage S#2), and immature worms were described in Picard et al. 2016 (raw reads are available under accession number SRP071285 on NCBI-SRA database). As for epigenetic data (*i.e.* chromatin immunoprecipitation, or ChiP, followed by single-read 50 nucleotides Illumina sequencing):

H3K27me3 ChiP-Seq was analysed in Picard et al. 2016 (male data available under accession number SRP071285); H3K27me3, H3K4me3 and H3K20me1 ChiP-Seq in females were reported in Roquis et al. 2016 (all data available on SRP035609). Accession numbers for each studied library are provided in Table 2.

TABLE 2. Publicly available RNA-Seq and ChiP-Seq data used in this study. RNA-Seq and ChiP-Seq data were previously generated in our laboratory, and were published in two different studies: SRP071285 accession number (SRA-NCBI database) for RNA-Seq and male H3K27me3 ChiP-Seq duplicates (Picard et al. 2016); and SRP035609 accession number (SRA-NCBI database) for female ChiP-Seq triplicates (Roquis et al. 2016). H3K4me3 ChiP-Seq analysis on males was never presented before and were deposited under SRP071285 accession number (SRA-NCBI database).

| MALES | ChiP-Seq - SRP071285 | | | | RNA-Seq - SRP071285 |
|----------------|----------------------|------------|------------|------------|---------------------|
| | H3K4me3 | H3K27me3 | H4K20me1 | Unbound | |
| Cercariae | SRX1631014 | SRX1630978 | - | SRX1631082 | SRX1623575 |
| | SRX1630986 | SRX1630768 | - | SRX1631034 | SRX1619495 |
| Schistosomula | - | - | - | - | SRX1630045 |
| | - | - | - | - | SRX1630044 |
| Immature worms | SRX1631176 | SRX1631108 | - | SRX1631199 | SRX1630049 |
| | SRX1631160 | SRX1631129 | - | SRX1631198 | SRX1630048 |
| FEMALES | ChiP-Seq - SRP035609 | | | | RNA-Seq - SRP071285 |
| | H3K4me3 | H3K27me3 | H4K20me1 | Unbound | |
| Cercariae | SRX1592114 | SRX1592113 | SRX1592115 | SRX1592116 | SRX1630050 |
| | SRX1592110 | SRX1592109 | SRX1592111 | SRX1592107 | SRX1630051 |
| | SRX1592105 | SRX1592103 | SRX1592106 | SRX1592102 | - |
| Schistosomula | - | - | - | - | SRX1630059 |
| | - | - | - | - | SRX1630060 |
| Immature worms | SRX1592144 | SRX1592143 | SRX1592145 | SRX1592146 | SRX1630064 |
| | SRX1592139 | SRX1592138 | SRX1592140 | SRX1592141 | SRX1630063 |
| | SRX1592134 | SRX1592133 | SRX1592135 | SRX1592136 | - |

Newly generated H3K4me3 ChiP-Seq data in males

Two biological replicates of male cercaria (2x10,000 individuals) and immature worms (2x20 individuals) were respectively obtained by monoclonal infection of *Biomphalaria glabrata* followed by unisex infection of Swiss OF1 mice (Picard et al. 2016 for details). Native chromatin immuno-precipitation assay was done according to Cosseau *et al.* (Cosseau et al. 2009) using 4 µl of H3K4me3 antibody (Millipore, cat. number 04-745, lot number NG1680351). Further details are available at <http://methdb.univ-perp.fr/epievo/>. ChIP library

construction and sequencing were performed at the sequencing facilities of Montpellier GenomiX (MGX, France). Briefly, TruSeq CHIP sample preparation kit (Illumina Inc., USA) was used according to the manufacturer's recommendations on 30 ng of DNA per condition. DNAs were blunt ended and adenylated on 3' ends. Illumina's indexed adapters were ligated to both ends, and resulting ligated DNA were enriched by PCR. PCR products were separated by size using electrophoresis and 400 base pairs (bp) fragments were selected. The quantitative analysis of the DNA library was carried on Agilent High Sensitivity chip and qPCR (Applied Biosystems 7500, SYBR Green). Finally, the sequencing was performed on a HiSeq2500 in single read 50 nt mode.

RNA-Seq raw read processing

Raw RNA-Seq reads were cleaned using trimmomatic v0.3 (Bolger et al. 2014), with the following options: SE -phred33 ILLUMINACLIP:~/Trimmomatic-0.36/adapters/TruSeq3-SE.fa:2:30:10 HEADCROP:12 LEADING:3 TRAILING:3 SLIDINGWINDOW:4:15 MINLEN:36. Resulting high quality reads were mapped to the *S. mansoni* reference genome v5.2 obtained on the WormBase Parasite database (schistosoma_mansoni.PRJEA36577.WBPS9.genomic.fa, at <https://parasite.wormbase.org/index.html>) using Tophat2 (Trapnell et al. 2009), with the following options: --library-type fr-firststrand --microexon-search -i 10 -I 40000 --min-segment-intron 10 --max-segment-intron 40000. Mapped reads were counted using Htseq (Anders et al. 2014), with the following options: -f bam -s reverse -m union --idattr gene_id (see read counts in Supplementary Data 1). Normalized expression values (in Reads Per Kilobase of transcript per Million mapped reads, RPKM) were calculated for all genes and samples (Supplementary Data 2).

Gene expression analysis according to genomic location

Gene location was based on GTF annotations obtained at WormbaseParasite ([schistosoma_mansoni.PRJEA36577.WBPS9.canonical_geneset.gtf](https://parasite.wormbase.org/index.html), <https://parasite.wormbase.org/index.html>). More precisely, genes located on the ZW sex chromosome linkage map were then attributed either to the Z-specific region, either to pseudo-autosomal regions depending on their coordinates (Z-specific windows: Z1: 3,550,000 - 13,340,000; Z2: 13,860,000 - 19,650,000 ; Z3: 23,230,000 - 30,820,000, Supplementary Data 3) (Protasio et al. 2012). Normalized expression data combined to gene locations were then implemented into a R script for drawing gene expression patterns (Supplementary Data 4). This R script is available as Supplementary Methods 1. Briefly, a Loess Normalization (R library Affy) was performed, taking into account the 12 libraries (cercariae, schistosomula, immature worms, for both sexes, and in duplicate). For each sex and stage, the averaged expression was then considered. Different thresholds for minimum of expression level were applied (RPKM>0, RPKM>1, and RPKM>5), and strong sex-bias were considered or not. These strong sex-bias were defined by a fold change higher than 2, considering either the female-to-male ratio (female sex-bias), or the male-to-female ratio (male sex-bias). When comparing two conditions, the ratio between the medians of expression was calculated, and the level of significance was tested with Wilcoxon rank sum tests with continuity correction. In the figures, significance is showed by stars: *P-value<0.05, **P-value<0.001, ***P-value<0.0001.

ChiP-Seq raw read processing

ChiP-Seq data treatment was carried out under a local galaxy instance (Goecks et al. 2010). After quality check (Andrews 2010), neither quality filtering nor trimming was applied and all the reads were mapped to the *S. mansoni* reference genome (assembly version 5.2) (Protasio et al. 2012), using Bowtie2 (Langmead & Salzberg 2012). Mapping quality in Bowtie 2 is related to “uniqueness” of the read. SAM alignment files were converted into the bed format with pyicos (Althammer et al. 2011) and sorted with sortBed -i of the bedtools suite (Quinlan et al. 2011).

Comparative EpiChIP analysis.

Average histone modification profiles around transcriptional start site of the genes (TSS) were generated by doing a window analysis from -1,000 to +5,000 base pairs relative to this TSS, using EpiChIP v0.9.7-e (Hebenstreit et al. 2011). As input, we used the 23 million, 6 million and 19 million randomly sampled mapped reads that were generated after the alignment step for H3K27me3, H3K4me3 and H4K20me1 respectively. The average histone profiles were generated on the chromosome 1 and independently on the Z-specific region and the pseudo-autosomal region (PAR) of the ZW sex chromosomes. For this purpose, we used the GTF annotation file generated previously (Picard et al. 2016) (available under id “*Schistosoma mansoni* sex-specific transcriptome” at <http://ihpe.univ-perp.fr/acces-aux-donnees/>) and selected 6,225 transcripts on chromosome 1, 2,421 on the Z-specific region, and 3,376 on the pseudo-autosomal region. The average H3K4me3 and input profiles (*i.e.* control without antibody) were generated for the two male biological replicates and the three female biological replicates (Supplementary Data 6). The average H3K27me3, H4K20me1 and input profiles were generated for the three female biological replicates (Supplementary Data 7 and 8). Each average profile was normalized with its respective input average profile in order to

be able to compare the different regions, whatever the number of genes in the considered region. The distribution of histone enrichment around the transcription start site were compared according to the stage and the genomic location using Kolmogorov-Smirnov two sample tests.

Code availability

R script for expression analysis is provided in Supplementary Methods 1.

Data availability

Male and female RNA-Seq reads are available at the NCBI-SRA database under study accession numbers SRP071285. Male ChiP-Seq reads (H3K4me3 and H3K27Me3) and female ChiP-Seq reads (H3K4me3, H3K27Me3, and H4K20Me1) respective study accession numbers are SRP071285 and SRP035609.

AKNOWLEDGEMENTS

The authors thank the Tecnoviv platform at UPVD (Perpignan, France) and IT support at IST Austria (Klosterneuburg, Austria) for providing optimal environment to perform high-throughput sequencing data analysis. This project was funded by the Région Languedoc Roussillon (France): *Schistosex* (2012, to Jérôme Boissier) and *Transgigas* (2015, to Céline Cosseau) “chercheur d’avenir” grants.

CONFLICT OF INTEREST STATEMENT

The authors declare that they have no conflict of interest.

ETHIC STATEMENT

All experiments were carried out following the national ethical standards established in the writ of February 1, 2013 (NOR: AGRG1238753A), which set the conditions for approval, planning, and operation of establishments, breeders and suppliers of animals used for scientific purposes and controls. The French Ministère de l’Agriculture et de la Pêche and the French Ministère de l’Education Nationale de la Recherche et de la Technologie provided permit A66040 to the laboratory for animal experiments and certificate to the experimenters (authorization 007083, decree 87–848).

LIST OF FIGURES

FIGURE 1. Gene expression level according to sex, developmental stage, and genomic location.

FIGURE 2. Female-to-male gene expression ratio according to the location along the Z-chromosome, and the developmental stages.

FIGURE 3. Average H3K4me3 and H3K27me3 enrichment profile according to sex, developmental stage, and genomic location.

LIST OF TABLES

TABLE 1. Ratio of gene expression between sexes, and between genomic location within each sex; according to developmental stages, and methodological filters.

TABLE 2. Publicly available RNA-Seq and ChiP-Seq data used in this study.

LIST OF SUPPLEMENTARY FILES

SUPPLEMENTARY FIGURES AND TABLES

Supplementary Figures 1 to 9 and Supplementary Tables 1 to 5 are provided as a unique pdf file.

SUPPLEMENTARY FIGURE 1. Female-to-male expression ratio according to the location along the Z-chromosome, and the developmental stages (including strong sex-biased genes).

SUPPLEMENTARY FIGURE 2. Female-to-male expression ratio according to the location along the Z-chromosome, and the developmental stages (excluding strong sex-biased genes).

SUPPLEMENTARY FIGURE 3. Gene expression pattern according to sex and Z-chromosome region.

SUPPLEMENTARY FIGURE 4. Gene expression clustering of the three studied developmental stages, according to their genomic location.

SUPPLEMENTARY FIGURE 5. Female-to-male ratio of expression for chromosome 1 throughout *S. mansoni* development.

SUPPLEMENTARY FIGURE 6. Epichip profiles of H3K4me3 showing standard error at each position.

SUPPLEMENTARY FIGURE 7. Epichip profiles of H3K27me3 showing standard error at each position.

SUPPLEMENTARY FIGURE 8. Epichip profiles of H3K20me1 showing standard error at each position.

SUPPLEMENTARY FIGURE 9. Correspondance between the three Z-specific regions Z1, Z2, Z3 and evolutionary strata previously described.

SUPPLEMENTARY TABLE 1. Number of analysed genes after filtering for minimum gene expression level.

SUPPLEMENTARY TABLE 2. Ratio of gene expression between the three Z-specific and the pseudo-autosomal regions, according to developmental stage and sex.

SUPPLEMENTARY TABLE 3. Percentage of maximum difference in H3K4me3 enrichment between genomic location.

SUPPLEMENTARY TABLE 4. Percentage of maximum difference in H3K27me3 enrichment between genomic location.

SUPPLEMENTARY TABLE 5. Percentage of maximum difference in H4K20me1 enrichment between genomic location.

SUPPLEMENTARY DATA

Supplementary data 1 to 5, relative to the transcriptomic analysis and 6 to 8, relative to the ChIP-Seq analysis are provided as a multi-sheet excel file.

SUPPLEMENTARY DATA 1. Htseq outputs (total read counts)

SUPPLEMENTARY DATA 2. RPKM calculation

SUPPLEMENTARY DATA 3. Gene location based on GTF file

SUPPLEMENTARY DATA 4. Input for R

SUPPLEMENTARY DATA 5. R Normalized table (resulting from Loess normalization)

SUPPLEMENTARY DATA 6. H3K4me3 enrichment data

SUPPLEMENTARY DATA 7. H3K27me3 enrichment data

SUPPLEMENTARY DATA 8. H4K20me3 enrichment data

SUPPLEMENTARY METHODS

SUPPLEMENTARY METHODS 1. R Script for gene expression analysis

REFERENCES

- Albritton SE, Kranz AL, Rao P, Kramer M, Dieterich C, Ercan S. 2014. Sex-biased gene expression and evolution of the X chromosome in nematodes. *Genetics*. 197(3):865-83. doi: 10.1534/genetics.114.163311
- Althammer S, González-Vallinas J, Ballaré C, Beato M, Eyra E. 2011. Pyicos: a versatile toolkit for the analysis of high-throughput sequencing data. *Bioinformatics*. 27:3333–40. doi: 10.1093/bioinformatics/btr570.
- Anders S, Pyl PT, Huber W. 2014. HTSeq—A Python framework to work with high-throughput sequencing data. *Bioinformatics*. 31(2): 166-169. doi: 10.1093/bioinformatics/btu638
- Andrews S. 2010. FastQC: a quality control tool for high throughput sequence data.
- Artieri CG, Haerty W, Singh RS. 2009. Ontogeny and phylogeny: molecular signatures of selection, constraint, and temporal pleiotropy in the development of *Drosophila*. *BMC Biol*. 7:42. doi: 10.1186/1741-7007-7-42.
- Bachtrog D, Kirkpatrick M, Mank JE, McDaniel SF, Pires JC, Rice W, Valenzuela N. 2011. Are all sex chromosomes created equal? *Trends Genet*. 27:350–357. doi: 10.1016/j.tig.2011.05.005.
- Bachtrog D, Mank JE, Peichel CL, Kirkpatrick M, Otto SP, Ashman TL, Hahn MW, Kitano J, Mayrose I, Ming R, Perrin N, Ross L, Valenzuela N, Vamosi JC, The Tree of Sex Consortium. 2014. Sex Determination: Why So Many Ways of Doing It? *PLoS Biol*. 12:e1001899. doi: 10.1371/journal.pbio.1001899.
- Basch PF. 1990. Why do schistosomes have separate sexes? *Parasitol. Today*. 6:160–163. doi: 10.1016/0169-4758(90)90339-6.
- Beck DB, Oda H, Shen SS, Reinberg D. 2012. PR-Set7 and H4K20me1: at the crossroads of genome integrity, cell cycle, chromosome condensation, and transcription. *Genes Dev*. 26:325–337. doi: 10.1101/gad.177444.111.
- Bergero R, Charlesworth D. 2009. The evolution of restricted recombination in sex chromosomes. *Trends Ecol*.

Evol. 24:94–102. doi: 10.1016/j.tree.2008.09.010.

Bian Q, Anderson EC, Brejc K, Meyer BJ. 2017. Dynamic Control of Chromosome Topology and Gene Expression by a Chromatin Modification. *Cold Spring Harb. Symp. Quant. Biol.* 82:279–291. doi: 10.1101/sqb.2017.82.034439.

Bisoni L, Batlle-Morera L, Bird AP, Suzuki M, McQueen HA. 2005. Female-specific hyperacetylation of histone H4 in the chicken Z chromosome. *Chromosom. Res.* 13:205–214. doi: 10.1007/s10577-005-1505-4.

Bolger AM, Lohse M, Usadel B. 2014. Trimmomatic: a flexible trimmer for Illumina sequence data. *Bioinformatics.* 30:2114–20. doi: 10.1093/bioinformatics/btu170.

Brockdorff N, Turner BM. 2015. Dosage compensation in mammals. *Cold Spring Harb. Perspect. Biol.* 7:a019406. doi: 10.1101/cshperspect.a019406.

Charlesworth B. 1996. The evolution of chromosomal sex determination and dosage compensation. *Curr. Biol.* 6:149–162. doi: 10.1016/S0960-9822(02)00448-7.

Charlesworth B. 1991. The evolution of sex chromosomes. *Science.* 251(4997):1030-1033. doi: 10.1126/science.1998119

Charlesworth D, Charlesworth B, Marais G. 2005. Steps in the evolution of heteromorphic sex chromosomes. *Heredity (Edinb).* 95:118–128. doi: 10.1038/sj.hdy.6800697.

Chen S, Zhang G, Shao C, *et al.* 2014. Whole-genome sequence of a flatfish provides insights into ZW sex chromosome evolution and adaptation to a benthic lifestyle. *Nat. Genet.* 46:253–260. doi: 10.1038/ng.2890.

Colley DG, Bustinduy AL, Secor WE, King CH. 2014. Human schistosomiasis. *Lancet.* 383:2253–2264. doi: 10.1016/S0140-6736(13)61949-2.

Combes C. 1991. The schistosome scandal. *Acta Oecologica.* 12:165–173.

Cort WW, Ameel DJ, Van der Woude A. 1954. Germinal development in the sporocysts and rediae of the digenetic trematodes. *Exp. Parasitol.* 3:185–225. doi: 10.1016/0014-4894(54)90008-9.

Cosseau C, Azzi A, Smith K, Freitag M, Mitta G, Grunau C. 2009. Native chromatin immunoprecipitation (N-ChIP) and ChIP-Seq of *Schistosoma mansoni*: Critical experimental parameters. *Mol. Biochem. Parasitol.* 166:70–76. doi: 10.1016/j.molbiopara.2009.02.015.

Cutter AD, Ward S. 2005. Sexual and Temporal Dynamics of Molecular Evolution in *C. elegans* Development. *Mol. Biol. Evol.* 22:178–188. doi: 10.1093/molbev/msh267.

Darolti I, Wright AE, Sandkam BA, Morris J, Bloch NI, Farré M, Fuller RC, Bourne GR, Larkin DM, Breden F, Mank JE. 2019. Extreme heterogeneity in sex chromosome differentiation and dosage compensation in livebearers. *bioRxiv.* 1:589788. doi: 10.1101/589788

Davis JC, Brandman O, Petrov DA. 2005. Protein Evolution in the Context of *Drosophila* Development. *J. Mol. Evol.* 60:774–785. doi: 10.1007/s00239-004-0241-2.

Deng X, Berletch JB, Nguyen DK, Disteché CM. 2014. X chromosome regulation: diverse patterns in development, tissues and disease. *Nat. Rev. Genet.* 15:367–78. doi: 10.1038/nrg3687.

Engelstadter J. 2008. Muller’s Ratchet and the Degeneration of Y Chromosomes: A Simulation Study. *Genetics.* 180:957–967. doi: 10.1534/genetics.108.092379.

Erasmus DA. 1973. A comparative study of the reproductive system of mature, immature and ‘unisexual’ female *Schistosoma mansoni*. *Parasitology.* 67:165. doi: 10.1017/S0031182000046394.

Ercan S. 2015. Mechanisms of X chromosome dosage compensation. *Journal of genomics.* 3:1. doi: 10.7150/jgen.10404

Georgiev P, Chlamydas S, Akhtar A. 2011. *Drosophila* dosage compensation: males are from Mars, females are from Venus. *Fly.* 5:147–54. doi: 10.4161/FLY.5.2.14934.

Goecks J, Nekrutenko A, Taylor J. 2010. Galaxy: a comprehensive approach for supporting accessible, reproducible, and transparent computational research in the life sciences. *Genome Biol.* 11:R86. doi: 10.1186/gb-2010-11-8-r86.

Graves JAM. 2016. Evolution of vertebrate sex chromosomes and dosage compensation. *Nat. Rev. Genet.* 17:33–46. doi: 10.1038/nrg.2015.2.

Grossman AI, Short RB, Cain GD. 1981. Karyotype evolution and sex chromosome differentiation in Schistosomes (Trematoda, Schistosomatidae). *Chromosoma.* 84:413–30.

Gu L, Walters JR. 2017. Evolution of sex chromosome dosage compensation in animals: a beautiful theory, undermined by facts and bedeviled by details. *Genome biology and evolution.* 9(9):2461-76. doi: 10.1093/gbe/evx154

Harrison PW, Mank JE, Wedell N. 2012. Incomplete Sex Chromosome Dosage Compensation in the Indian Meal Moth, *Plodia interpunctella*, Based on De Novo Transcriptome Assembly. *Genome Biol. Evol.* 4:1118–1126. doi: 10.1093/gbe/evs086.

Hebenstreit D, Fang M, Gu M, Charoensawan V, van Oudenaarden A, Teichmann SA. 2011. RNA sequencing reveals two major classes of gene expression levels in metazoan cells. *Mol. Syst. Biol.* 7:497. doi :

10.1038/msb.2011.28

- Hurst LD, Ghanbarian AT, Forrest AR, Huminiecki L, Fantom Consortium. 2015. The constrained maximal expression level owing to haploidy shapes gene content on the mammalian X chromosome. *PLoS biology*. 13(12):e1002315. doi: 10.1371/journal.pbio.1002315
- Huylmans AK, Macon A, Vicoso B. 2017. Global Dosage Compensation Is Ubiquitous in Lepidoptera, but Counteracted by the Masculinization of the Z Chromosome. *Mol. Biol. Evol.* 34:2637–2649. doi: 10.1093/molbev/msx190.
- Huylmans AK, Touns MA, Macon A, Gammerdinger WJ, Vicoso B. 2019. Sex-biased gene expression and dosage compensation on the *Artemia franciscana* Z-chromosome. *Genome biology and evolution*. doi: 10.1093/gbe/evz053
- Itoh Y, Melamed E, Yang X, Kampf K, Wang S, Yehya N, Van Nas A, Replogle K, Band MR, Clayton DF, Schadt EE, Lusk AJ, Arnold AP. 2007. Dosage compensation is less effective in birds than in mammals. *J. Biol.* 6:2. doi: 10.1186/jbiol53.
- Jaquière J, Rispé C, Roze D, Legeai F, Le Trionnaire G, Stoeckel S, Mieuze L, Da Silva C, Poulain J, Prunier-Leterme N, Ségurens B, Tagu D, Simon JC. 2013. Masculinization of the X Chromosome in the Pea Aphid. *PLoS Genet.* 9:e1003690. doi: 10.1371/journal.pgen.1003690.
- Julien P, Brawand D, Soumillon M, Necsulea A, Liechti A, Schütz F, Daish T, Grützner F, Kaessmann H. 2012. Mechanisms and evolutionary patterns of mammalian and avian dosage compensation. *PLoS biology*. 15:10(5):e1001328. doi : 10.1371/journal.pbio.1001328
- Kelsey AD, Yang C, Leung D, Minks J, Dixon-McDougall T, Baldry SEL, Bogutz AB, Lefebvre L, Brown CJ. 2015. Impact of flanking chromosomal sequences on localization and silencing by the human non-coding RNA XIST. *Genome Biol.* 16:208. doi: 10.1186/s13059-015-0774-2.
- Kiuchi, Takashi, et al. "A single female-specific piRNA is the primary determiner of sex in the silkworm." *Nature* 509.7502 (2014): 633. doi : 10.1038/nature13315
- Kramer M, Kranz AL, Su A, Winterkorn LH, Albritton SE, Ercan S. 2016. Correction: Developmental Dynamics of X-Chromosome Dosage Compensation by the DCC and H4K20me1 in *C. elegans*. *PLoS Genet.* 12:e1005899. doi: 10.1371/journal.pgen.1005899.
- Kramer M, Kranz AL, Su A, Winterkorn LH, Albritton SE, Ercan S. 2015. Developmental Dynamics of X-Chromosome Dosage Compensation by the DCC and H4K20me1 in *C. elegans*. *PLoS Genet.* 11:e1005698. doi: 10.1371/journal.pgen.1005698.
- Langmead B, Salzberg SL. 2012. Fast gapped-read alignment with Bowtie 2. *Nat. Methods.* 9:357–359. doi: 10.1038/nmeth.1923.
- Lau AC, Csankovszki G. 2015. Balancing up and downregulation of the *C. elegans* X chromosomes. *Curr. Opin. Genet. Dev.* 31:50–56. doi: 10.1016/J.GDE.2015.04.001.
- Lepesant MJ, Cosseau C, Boissier J, Freitag M, Portela J, Climent D, Perrin C, Zerlotini A, Grunau C. 2012. Chromatin structure changes around satellite repeats on the *Schistosoma mansoni* female sex chromosome suggest a possible mechanism for sex chromosome emergence. *Genome Biol.* 13:R14. doi: 10.1186/gb-2012-13-2-r14.
- Lin F, Xing K, Zhang J, He X. 2012. Expression reduction in mammalian X chromosome evolution refutes Ohno's hypothesis of dosage compensation. *Proceedings of the National Academy of Sciences*, 109.29: 11752–11757. doi: 10.1073/pnas.1201816109.
- Loker ES, Brant S V. 2006. Diversification, dioecy and dimorphism in schistosomes. *Trends Parasitol.* 22:521–528. doi: 10.1016/j.pt.2006.09.001.
- Lott SE, Villalta JE, Schroth GP, Luo S, Tonkin LA, Eisen MB. 2011. Noncanonical Compensation of Zygotic X Transcription in Early *Drosophila melanogaster* Development Revealed through Single-Embryo RNA-Seq. *PLoS Biol.* 9:e1000590. doi: 10.1371/journal.pbio.1000590.
- Lucchesi JC. 2018. Transcriptional modulation of entire chromosomes: dosage compensation. *J. Genet.* 97:357–364. doi: 10.1007/s12041-018-0919-7.
- Lucchesi JC, Kelly WG, Panning B. 2005. Chromatin remodeling in dosage compensation. *Annu. Rev. Genet.* 39:615–51. doi: 10.1146/annurev.genet.39.073003.094210.
- Mahajan S, Bachtrog D. 2015. Sex-specific adaptation drives early sex chromosome evolution in *Drosophila*. *Genome Biol. Evol.* 337:341–345. doi: 10.1093/GBE/EVV008.
- Mank JE. 2013. Sex chromosome dosage compensation: definitely not for everyone. *Trends Genet.* 29:677–683. doi: 10.1016/j.tig.2013.07.005.
- Mank JE. 2009. The W, X, Y and Z of sex-chromosome dosage compensation. *Trends Genet.* 25:226–233. doi: 10.1016/j.tig.2009.03.005.
- Mank JE, Ellegren H. 2009. All dosage compensation is local: Gene-by-gene regulation of sex-biased expression on the chicken Z chromosome. *Heredity.* 102:312–320. doi: 10.1038/hdy.2008.116.

- Marks H, Chow JC, Denissov S, François KJ, Brockdorff N, Heard E, Stunnenberg HG. 2009. High-resolution analysis of epigenetic changes associated with X inactivation. *Genome Res.* 19:1361–73. doi: 10.1101/gr.092643.109.
- Melamed E, Arnold AP. 2007. Regional differences in dosage compensation on the chicken Z chromosome. *Genome Biol.* 8:R202. doi: 10.1186/gb-2007-8-9-r202.
- Muyle A, Zemp N, Fruchard C, Cegan R, Vrana J, Deschamps C, Tavares R, Hobza R, Picard F, Widmer A, Marais GA. 2018. Genomic imprinting mediates dosage compensation in a young plant XY system. *Nature plants.* 4(9):677. doi: 10.1038/s41477-018-0221-y
- Naurin S, Hansson B, Hasselquist D, Kim Y-H, Bensch S. 2011. The sex-biased brain: sexual dimorphism in gene expression in two species of songbirds. *BMC Genomics.* 12:37. doi: 10.1186/1471-2164-12-37.
- Neves RH, de Lamare Biolchini C, Machado-Silva JR, Carvalho JJ, Branquinho TB, Lenzi HL, Hulstijn M, Gomes DC. 2005. A new description of the reproductive system of *Schistosoma mansoni* (Trematoda: Schistosomatidae) analyzed by confocal laser scanning microscopy. *Parasitol. Res.* 95:43–49. doi: 10.1007/s00436-004-1241-2.
- Nguyen DK, Disteche CM. 2006. Dosage compensation of the active X chromosome in mammals. *Nature genetics.* 38(1), 47. doi: 10.1038/ng1705
- O'Neill LP, Spotswood HT, Fernando M, Turner BM. 2008. Differential loss of histone H3 isoforms mono-, di- and tri-methylated at lysine 4 during X-inactivation in female embryonic stem cells. *Biol. Chem.* 389:365–370. doi: 10.1515/BC.2008.046.
- Ohno S. 1967. *Sex Chromosomes and Sex-linked Genes.* Springer-Verlag.
- Pal A, Vicoso B. 2015. The X Chromosome of Hemipteran Insects: Conservation, Dosage Compensation and Sex-Biased Expression. *Genome Biol. Evol.* 7:3259–3268. doi: 10.1093/gbe/evv215.
- Pessia E, Makino T, Bailly-Bechet M, McLysaght A, Marais GA. 2012. Mammalian X chromosome inactivation evolved as a dosage-compensation mechanism for dosage-sensitive genes on the X chromosome. *Proceedings of the National Academy of Sciences.* 109(14):5346–51. doi : 10.1073/pnas.1116763109
- Pessia E, Engelstädter J, Marais GA. 2014. The evolution of X chromosome inactivation in mammals: the demise of Ohno's hypothesis?. *Cellular and molecular life sciences.* 71(8):1383–94. doi: 10.1007/s00018-013-1499-6.
- Picard MAL, Cosseau C, Ferre S, Quack T, Grevelding CG, Coute Y, Vicoso B. 2018. Evolution of gene dosage on the Z-chromosome of schistosome parasites. *Elife.* 7. doi: 10.7554/eLife.35684.
- Picard MAL, Boissier J, Roquis D, Grunau C, Allienne JF, Duval D, Toulza E, Arancibia N, Caffrey CR, Long T, Nidelet S, Rohmer M, Cosseau C. 2016. Sex-Biased Transcriptome of *Schistosoma mansoni*: Host-Parasite Interaction, Genetic Determinants and Epigenetic Regulators Are Associated with Sexual Differentiation. *PLoS Negl. Trop. Dis.* 10:e0004930. doi: 10.1371/journal.pntd.0004930.
- Portela J, Grunau C, Cosseau C, Beltran S, Dantec C, Parrinello H, Boissier J. 2010. Whole-genome in-silico subtractive hybridization (WISH) - using massive sequencing for the identification of unique and repetitive sex-specific sequences: the example of *Schistosoma mansoni*. *BMC Genomics.* 11:387. doi: 10.1186/1471-2164-11-387.
- Prince EG, Kirkland D, Demuth JP. 2010. Hyperexpression of the X Chromosome in Both Sexes Results in Extensive Female Bias of X-Linked Genes in the Flour Beetle. *Genome Biol. Evol.* 2:336–346. doi: 10.1093/gbe/evq024.
- Protasio AV, Tsai IJ, Babbage A, et al. 2012. A systematically improved high quality genome and transcriptome of the human blood fluke *Schistosoma mansoni*. *PLoS Negl. Trop. Dis.* 6:e1455. doi: 10.1371/journal.pntd.0001455.
- Quinlan AR, Boland MJ, Leibowitz ML, Shumilina S, Pehrson SM, Baldwin KK, Hall IM. 2011. Genome sequencing of mouse induced pluripotent stem cells reveals retroelement stability and infrequent DNA rearrangement during reprogramming. *Cell Stem Cell.* 9:366–373. doi: 10.1016/j.stem.2011.07.018
- Rice WR. 1987. The Accumulation of Sexually Antagonistic Genes as a Selective Agent Promoting the Evolution of Reduced Recombination between Primitive Sex Chromosomes. *Evolution.* 41:911. doi: 10.2307/2408899.
- Richard G, Legeai F, Prunier-Leterme N, Bretaudeau A, Tagu D, Jaquiéry J, Le Trionnaire G. 2017. Dosage compensation and sex-specific epigenetic landscape of the X chromosome in the pea aphid. *Epigenetics Chromatin.* 10:30. doi: 10.1186/s13072-017-0137-1.
- Roquis D, Rognon A, Chaparro C, Boissier J, Arancibia N, Cosseau C, Parrinello H, Grunau C. 2016. Frequency and mitotic heritability of epimutations in *Schistosoma mansoni*. *Mol. Ecol.* 25:1741–1758. doi: 10.1111/mec.13555.
- Roquis D, Taudt A, Geyer KK, Padalino G, Hoffmann KF, Holroyd N, Berriman M, Aliaga B, Chaparro C, Grunau C, de Carvalho Augusto R. 2018. Histone methylation changes are required for life cycle progression in

the human parasite *Schistosoma mansoni*. *PLoS Pathog.* 14:e1007066. doi: 10.1371/journal.ppat.1007066.

Roquis D, Lepesant MJ, Picard MAL, Freitag M, Parrinello H, Groth M, Emans R, Cosseau C, Grunau C. 2015. The Epigenome of *Schistosoma mansoni* Provides Insight about How Cercariae Poise Transcription until Infection. *PLoS Negl. Trop. Dis.* 9:e0003853. doi: 10.1371/journal.pntd.0003853.

Sangrithi MN, Turner JMA. 2018. Mammalian X Chromosome Dosage Compensation: Perspectives From the Germ Line. *BioEssays.* 40:1800024. doi: 10.1002/bies.201800024.

Schultheiß R, Viitaniemi HM, Leder EH. 2015. Spatial Dynamics of Evolving Dosage Compensation in a Young Sex Chromosome System. *Genome Biol. Evol.* 7:581–590. doi: 10.1093/gbe/evv013.

Shao C, Li Q, Chen S, et al. 2014. Epigenetic modification and inheritance in sexual reversal of fish. *Genome Res.* 24:604–15. doi: 10.1101/gr.162172.113.

Stenberg P, Lundberg LE, Johansson AM, Rydén P, Svensson MJ, Larsson J. 2009. Buffering of Segmental and Chromosomal Aneuploidies in *Drosophila melanogaster*. *PLoS Genet.* 5:e1000465. doi: 10.1371/journal.pgen.1000465.

Trapnell C, Pachter L, Salzberg SL. 2009. TopHat: discovering splice junctions with RNA-Seq. *Bioinformatics.* 25:1105–11. doi: 10.1093/bioinformatics/btp120.

Uebbing S, Konzer A, Xu L, Backström N, Brunström B, Bergquist J, Ellegren H. 2015. Quantitative Mass Spectrometry Reveals Partial Translational Regulation for Dosage Compensation in Chicken. *Mol. Biol. Evol.* 32:2716–2725. doi: 10.1093/molbev/msv147.

Valsecchi CIK, Basilicata MF, Semplicio G, Georgiev P, Gutierrez NM, Akhtar A. 2018. Facultative dosage compensation of developmental genes on autosomes in *Drosophila* and mouse embryonic stem cells. *Nat. Commun.* 9:3626. doi: 10.1038/s41467-018-05642-2.

Veitia RA. 2005. Gene dosage balance: deletions, duplications and dominance. *Trends Genet.* 21:33–5. doi: 10.1016/j.tig.2004.11.002.

Vicoso B, Bachtrog D. 2011. Lack of global dosage compensation in *Schistosoma mansoni*, a female-heterogametic parasite. *Genome Biol. Evol.* 3:230–235. doi: 10.1093/gbe/evr010.

Vicoso B, Bachtrog D. 2009. Progress and prospects toward our understanding of the evolution of dosage compensation. *Chromosome Res.* 17:585–602. doi: 10.1007/s10577-009-9053-y.

Vicoso B, Emerson JJ, Zektser Y, Mahajan S, Bachtrog D. 2013. Comparative sex chromosome genomics in snakes: differentiation, evolutionary strata, and lack of global dosage compensation. *PLoS Biol.* 11:e1001643. doi: 10.1371/journal.pbio.1001643.

Vielle A, Lang J, Dong Y, et al. 2012. H4K20me1 contributes to downregulation of X-linked genes for *C. elegans* dosage compensation. *PLoS Genet.* 8:e1002933. doi: 10.1371/journal.pgen.1002933.

Walters JR, Hardcastle TJ. 2011. Getting a full dose? Reconsidering sex chromosome dosage compensation in the silkworm, *Bombyx mori*. *Genome biology and evolution* 3: 491-504. doi : 10.1093/gbe/evr036

Wang B, Collins JJ, Newmark PA. 2013. Functional genomic characterization of neoblast-like stem cells in larval *Schistosoma mansoni*. *Elife.* 2. doi: 10.7554/eLife.00768.

Whitworth DJ, Pask AJ. 2016. The X factor: X chromosome dosage compensation in the evolutionarily divergent monotremes and marsupials. *Seminars in cell & developmental biology.* 56:117-121. doi: 10.1016/j.semcd.2016.01.006

Wolf JB, Bryk J. 2011. General lack of global dosage compensation in ZZ/ZW systems? Broadening the perspective with RNA-seq. *BMC Genomics.* 12:91. doi: 10.1186/1471-2164-12-91.

Wright AE, Zimmer F, Harrison PW, Mank JE. 2015. Conservation of Regional Variation in Sex-Specific Sex Chromosome Regulation. *Genetics.* 201:587–98. doi: 10.1534/genetics.115.179234.

Xiong Y, Chen X, Chen Z, et al. 2010. RNA sequencing shows no dosage compensation of the active X-chromosome. *Nature genetics.* 42.12: 1043. doi : 10.1038/ng.711.