



HAL
open science

Combined inhibition of PI3K and Src kinases demonstrates synergistic therapeutic efficacy in clear-cell renal carcinoma

Caroline Roelants, Sofia Giacosa, Catherine Pillet, Rémi Bussat, Pierre Champelovier, Olivier Bastien, Laurent Guyon, Valentin Arnoux, Claude Cochet, Odile Filhol

► **To cite this version:**

Caroline Roelants, Sofia Giacosa, Catherine Pillet, Rémi Bussat, Pierre Champelovier, et al.. Combined inhibition of PI3K and Src kinases demonstrates synergistic therapeutic efficacy in clear-cell renal carcinoma. *Oncotarget*, 2018, 9 (53), pp.30066-30078. 10.18632/oncotarget.25700 . hal-02176916

HAL Id: hal-02176916

<https://hal.science/hal-02176916v1>

Submitted on 16 Jan 2025

HAL is a multi-disciplinary open access archive for the deposit and dissemination of scientific research documents, whether they are published or not. The documents may come from teaching and research institutions in France or abroad, or from public or private research centers.

L'archive ouverte pluridisciplinaire **HAL**, est destinée au dépôt et à la diffusion de documents scientifiques de niveau recherche, publiés ou non, émanant des établissements d'enseignement et de recherche français ou étrangers, des laboratoires publics ou privés.



Distributed under a Creative Commons Attribution 4.0 International License

Combined inhibition of PI3K and Src kinases demonstrates synergistic therapeutic efficacy in clear-cell renal carcinoma

Caroline Roelants^{1,2}, Sofia Giacosa¹, Catherine Pillet³, Rémi Bussat¹, Pierre Champelovier⁴, Olivier Bastien⁵, Laurent Guyon¹, Valentin Arnoux⁴, Claude Cochet¹ and Odile Filhol¹

¹Université Grenoble-Alpes, Inserm U1036, CEA, BIG-BCI, Grenoble, France

²Inovation, Paris, France

³Université Grenoble-Alpes, Inserm U1038, CEA, BIG-BGE, Grenoble, France

⁴Centre Hospitalier Université Grenoble-Alpes, CS 10217, Grenoble, France

⁵Université Grenoble-Alpes, CNRS-CEA-INRA, Laboratoire de Physiologie Cellulaire et Végétale, Grenoble, France

Correspondence to: Odile Filhol, **email:** odile.filhol-cochet@cea.fr

Keywords: kidney cancer; synthetic lethality; 3D culture; protein kinase; targeted combinational therapy

Received: January 26, 2018

Accepted: June 12, 2018

Published: July 10, 2018

Copyright: Roelants et al. This is an open-access article distributed under the terms of the Creative Commons Attribution License 3.0 (CC BY 3.0), which permits unrestricted use, distribution, and reproduction in any medium, provided the original author and source are credited.

ABSTRACT

Potent inhibitors of PI3K (GDC-0941) and Src (Saracatinib) exhibit as individual agents, excellent oral anticancer activity in preclinical models and have entered phase II clinical trials in various cancers. We found that PI3K and Src kinases are dysregulated in clear cell renal carcinomas (ccRCCs), an aggressive disease without effective targeted therapies. In this study we addressed this challenge by testing GDC-0941 and Saracatinib as either single agents or in combination in ccRCC cell lines, as well as in mouse and PDX models. Our findings demonstrate that combined inhibition of PI3K and Src impedes cell growth and invasion and induces cell death of renal carcinoma cells providing preclinical evidence for a pairwise combination of these anticancer drugs as a rational strategy to improve renal cancer treatment.

INTRODUCTION

Most kidney cancers are renal cell carcinoma (RCC) including the major subtype clear cell RCC (ccRCC) which is notoriously refractory to traditional chemotherapeutic such as radiation and cytokine therapies. Since the new century, several agents targeting angiogenesis and signal transduction pathways such as sunitinib, temsirolimus, pazopanib have appeared, showing improved clinical benefit and survival in randomized prospective clinical trials. Yet, improvements are still required as many of the current therapies are limited by acquired resistance. The phosphatidylinositol 3-kinase (PI3K)/protein kinase B (Akt/PKB) pathway which is composed of multiple converging kinase cascades, is aberrantly activated in ccRCC [1–7]. Importantly, this activation observed in a large number of high-grade and high-stage ccRCC has been associated with adverse clinical

outcome, suggesting that this pathway is a “target-rich” source for cancer therapy for which inhibitors may serve as effective therapeutic agents [2, 3, 6–8]. Consequently, more than 50 drugs inhibiting this pathway are now in clinical development. One of them is GDC-0941 (Pictilisib), an orally bio-available small molecule inhibitor that selectively targets all class I PI3K isoforms [8, 9]. Although GDC-0941 was well tolerated in preclinical studies in mice, and has entered phase II clinical trials [10, 11], the responses are short and patients frequently show disease progression within a year [12]. Indeed, PI3K activation in tumor cells is often accompanied by concurrent activation of other oncogenic pathways, explaining the de novo treatment resistance. Thus, targeting this multi-component pathway, either alone or in combination with other drugs is urgently needed [8, 13].

Overexpression of the epidermal growth factor receptor (EGFR) in metastatic ccRCC is associated with high tumor grade [14–16]. The non-receptor tyrosine

kinase Src is an important downstream effector of the EGFR that is predominantly involved in invasion [16–21]. Its activation has been established as a poor prognostic factor in several types of cancers and its contribution to the appearance of malignant phenotypes in renal cancer cells has been reported [15]. In addition, Src regulates a wide range of cellular processes and is a common node of multiple resistance pathways suggesting it may be a useful target for therapy [18, 22, 23]. Saracatinib (AZD0530) is an orally available dual-specific inhibitor of Src and Abelson protein tyrosine kinases [24–26] which is currently evaluated in clinical trials [27]. Accumulating evidence suggest that Src interacts with and stimulates the PI3K/Akt pathway in cancer cells [28–31] and knockdown of PI3K was shown to inhibit Src activation suggesting a potential bidirectional crosstalk [32]. Here we show that PI3K and Src kinases are dysregulated in ccRCC tumor samples and may represent relevant therapeutic targets. Therefore, we hypothesized that simultaneous targeting of both pathways through pharmacologic inhibition might have synergistic effects on metastatic ccRCC. Mechanistic investigations of the PI3K inhibitor GDC-0941 in combination with the Src kinase inhibitor Saracatinib demonstrated synergistic inhibition of tumor cell proliferation, reduction of cell migration/invasion and pro-apoptotic signal induction in tumor cells grown as spheroids. These results were confirmed in treated organotypic short-term culture of tumor tissue slices. Finally, the drug combination efficiently inhibited tumor growth and induced apoptosis in an orthotopic xenograft model. Together, our findings provide preclinical proof of concept for a tractable target combination therapy in ccRCC.

RESULTS

Human renal carcinomas overexpress activated Src and Akt kinases

Sequencing of mRNA and clinical data extracted from the database TCGA for 523 ccRCC patients showed that higher levels of Src and Akt mRNA expression is strongly associated with adverse clinical outcome (Supplementary Figure 1). In particular, reduced Src (Supplementary Figure 1A) and Akt2 (Supplementary Figure 1B) transcript levels are individually associated with better survival rates.

Moreover, ten tumor samples characterized as ccRCC and their normal surrounding tissue were analyzed by Western blot (Supplementary Figure 2). Consistent difference in the expression of Akt protein could be observed between normal (NT) and tumoral (T) samples, whereas Src protein expression was often higher in non tumoral tissues. However, as visualized by the P-Src/Src and P-Akt/Akt ratios, 80% and 70% of tumor samples showed higher amounts of the activated

forms of Src and Akt respectively, as compared to normal tissue. Moreover, 70% of these tumors showed a combined activation, suggesting that the PI3K and Src pathways may be upregulated in these tumor samples. Therefore, dysregulated Src and PI3K may represent relevant therapeutic targets that prompted us to evaluate the antitumor effects of GDC-0941 and Saracatinib as inhibitors of PI3K and Src kinases respectively.

Renal cancer cells are sensitive to targeted PI3K/Src inhibition

We first evaluated the expression level of both Src and Akt proteins and their respective activated forms in the renal carcinoma cells 786-O VHL⁻ cells, and its derivate containing a functional VHL construct HA-VHL (786-O VHL⁺), together with a normal renal cell line (RPTEC) (Figure 1A, Supplementary Figure 3). Src protein was present and similarly active in all these samples. In contrast, activated Akt was absent in RPTEC and highly active in 786-O VHL⁺. We then tested GDC-0941 and Saracatinib on the growth and viability of 786-O VHL⁻ and 786-O VHL⁺ cells using the PrestoBlue assay. As single agent, GDC-0941 and Saracatinib inhibited ccRCC cell growth in a dose dependent manner (Figure 1B). However, we noticed that cell growth was partially impeded by either agents reaching only 40-50% inhibition at high concentrations, suggesting a potential compensatory mechanism (Figure 1B). 786-O VHL⁺ cells displayed higher sensitivity to GDC-0941 than 786-O VHL⁻ cells (GI₂₅: 1.0 and 1.6 μM respectively). Similarly, Saracatinib was more efficient on 786-O VHL⁺ cells compared to 786-O VHL⁻ cells (GI₂₅: 0.6 and 3.2 μM respectively). Treatment of 786-O VHL⁻ cells with increasing concentrations of GDC-0941 strongly decreased PI3K/Akt signaling, as evidenced by reduction in Akt phosphorylation. Surprisingly, this signaling was also downregulated at high concentrations of Saracatinib. As expected, Src phosphorylation was also inhibited in a dose-dependent manner by Saracatinib (Supplementary Figure 4A). Unexpectedly, in both cell lines, Akt and Src expression levels, were upregulated in response to either GDC-0941 or Saracatinib treatment respectively, suggesting a potential crosstalk between the PI3K/Akt and Src signaling pathways (Supplementary Figure 4A and 4B).

PI3K and Src inhibition acts synergistically in 786-O cells

We hypothesized that combined inhibition of PI3K and Src that were moderately efficacious as single agents, could result in synergistic cell killing. Therefore, GDC-0941 and Saracatinib alone or in combination were tested on 786-O VHL⁻ and VHL⁺ cells at a concentration yielding 25% maximal response (EC₂₅) by EC₂₅ checkerboard

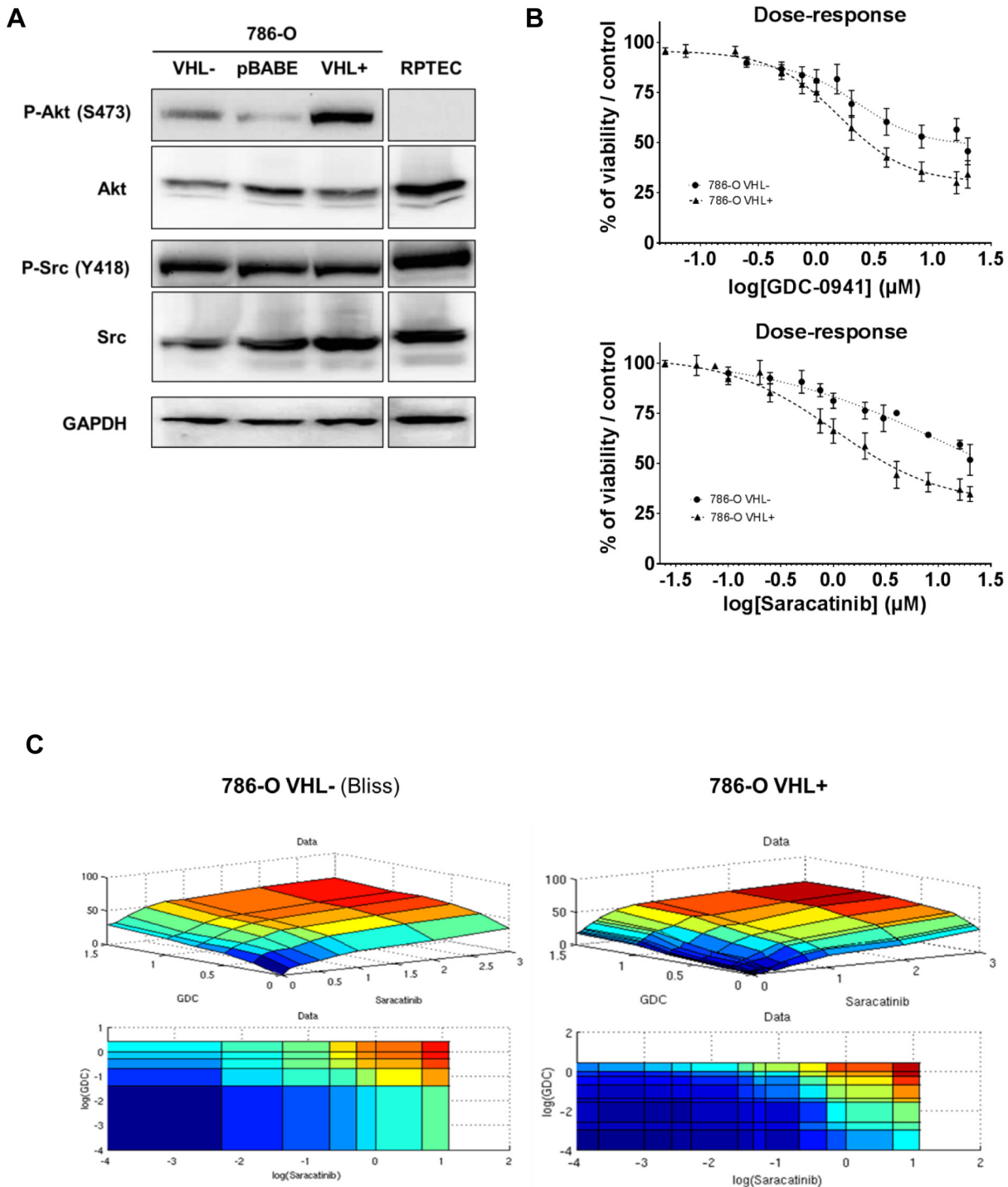


Figure 1: Protein kinases Src and Akt as targets in renal tissues and cell lines. (A) Western blot analysis of WT (VHL⁻), Mock-transfected (pBABE), VHL-transfected (VHL⁺) 786-O cells and normal renal cells RPTEC. Both Src and Akt are detected for their expression and activity using anti total and phospho-site antibodies. GAPDH was used as a loading control. (B) Effects of Src and PI3K inhibition on the two 786-O cell lines. Cell viability of WT (VHL⁻; circle) and VHL-transfected (VHL⁺; triangle) 786-O cells was measured with Prestoblu[®], upon dose-response of either GDC-0941 or Saracatinib for 48h. (C) Mathematical modelisation of dose-response matrix measurements on the two 786-O cell lines. Cell viability of WT (VHL⁻) and VHL-transfected (VHL⁺) 786-O cells was measured with Prestoblu[®], upon dose-response of either GDC-0941 or Saracatinib for 48h. Data were processed to fit with three major models (HSA, Loewe and Bliss) that were evaluated by RMSE calculation.

design and evaluated by comparison of the experimentally derived impairment of cellular viability with the predicted combinatorial effect determined using the Bliss-additivity model [33]. When used as a single agent, GDC-0941 inhibited viability of 786-O VHL⁻ and VHL⁺ cells with IC₅₀s equal to 4 and 1.6 μM respectively. Saracatinib demonstrated similar potency with IC₅₀s of 3.5 and 1.4 μM respectively. Interestingly, a GDC-0941/ Saracatinib combination was highly synergistic in killing 786-O cells in the lower, clinically relevant dose range, reaching up to 40% more inhibition than predicted by Bliss additivity (Figure 1C). We also performed independent or combined inhibition of Src and PI3K/AKT pathways, using other inhibitors. The results show that Akt2 that is selectively inhibited by CCT128930, might not be involved as it had a low impact on 786-O cell mortality, and importantly, no synergistic effect in combination with Saracatinib (Supplementary Figure 5A). Moreover, other Src inhibitors like Dasatinib or Bosutinib which are more specific for Src, showed like Saracatinib, a synergistic effect in combination with GDC-0941 (Supplementary Figure 5B-5D). These results reinforce the assumption that simultaneous inhibition of PI3K and Src acted in a synergistic fashion to further impede 786-O cell growth *in vitro*.

Simultaneous inhibition of PI3K and Src results in substantial induction of apoptosis

Immunoblotting of lysates prepared from VHL⁻ or VHL⁺ 786-O-treated cells showed that GDC-0941 caused a marked induction of cleaved-PARP, a key substrate of activated caspases and an early indicator of apoptosis. This pro-apoptotic effect was significantly improved when both drugs were used in combination compared to single therapy. Similarly, cleaved Caspase-7 was strongly increased upon Saracatinib treatment. Again, this effect was potentiated when both drugs were used in combination (supplementary Figure 6).

Combined inhibition of PI3K and Src results in decreased cell migration/invasion

Migration and invasion are essential steps that have been shown to associate clinically with metastatic dissemination in ccRCC patients [15, 34]. Tyrosine phosphorylation of cellular proteins such as FAK, p130Cas and Paxillin plays critical roles in regulation of cytoskeleton and focal adhesion. Therefore, we first compared the migration properties of RPTEC and 786-O cells. As expected, RPTEC migration was almost undetectable. In contrast 786-O VHL⁻ cells exhibited exceedingly elevated migration as compared to RPTEC and 786-O VHL⁺ cells (Figure 2A, left panel). Accordingly, cell motility signaling components were differentially activated in 786-O VHL⁻, 786-O VHL⁺ and

RPTEC cells as evidenced by phosphorylation of FAK (Y576/577), Paxillin (Y118) and p130Cas (Y410) (Figure 2B, left panel). We next assessed the effect of PI3K and Src inhibition on the migration of these RCC cell lines. Single-agent activity of GDC-0941 or Saracatinib at concentrations of 0.75 μM or 1 μM respectively, had marginal effects on the migration of either 786-O VHL⁻ or 786-O VHL⁺ cells. However, combined inhibition of PI3K and Src led to a significant synergistic inhibition of migration of 786-O VHL⁻ cells, whereas migration of 786-O VHL⁺ cells was weakly affected (Figure 2A, right panel). Single treatment of 786-O VHL⁻ cells with Saracatinib resulted in efficient suppression of Src autophosphorylation at Y418 (Supplementary Figure 4B) together with a strong decrease in the phosphorylation of FAK, Paxillin and p130Cas, which are signaling proteins required for efficient integrin-mediated focal adhesion formation (Figure 2B, right panel). The phosphorylation of these cytoskeleton proteins was also inhibited by GDC-0941 as a single agent (Figure 2B, right panel). These results show that both PI3K and Src pathways participate to the upregulated migration of RCC cells.

We next examined the inhibitory effect of GDC-0941 or Saracatinib on cell invasion using Boyden chamber assays. As expected, RPTEC invasion was almost undetectable in these assays. In contrast 786-O VHL⁻ cells showed exacerbated invasion properties as compared to 786-O VHL⁺ cells (Figure 2C, left panel). Single agent treatment with GDC-0941 or Saracatinib at a concentration of 0.75 μM or 1 μM respectively, had a significant inhibitory effect on the invasion of 786-O cells. Interestingly, invasion of both cell lines was almost completely suppressed by the GDC-0941/Saracatinib combination (Figure 2C, right panel).

The matrix metalloproteinases, MMP-9 and MMP-2, are upregulated in ccRCC promoting the ability to metastasize [35, 36]. We found that GDC-0941 caused in both VHL⁻ or VHL⁺ 786-O cells, a dramatic decrease in expression of MMP-9 in its cleaved and hence active form, whereas MMP-2 was not affected (Figure 2D). In VHL⁺ 786-O cells, MMP-9 activation was also affected upon Saracatinib-mediated Src inhibition and fully abrogated by simultaneous inhibition of both PI3K and Src pathways.

Dual PI3K and Src inhibition promotes apoptosis on multicellular tumor spheroids

The importance of studying cancer cells in three-dimensional (3D) models has been emphasized because of their higher relevance to *in vivo* situation [37–39]. To further explore the impact of combinational treatment of renal cancer cells, we analyzed cell growth and survival of 786-O VHL⁻ cells grown as 3D multicellular tumor spheroids (MCTS). After 72h of treatment with GDC-0941 or Saracatinib alone, a decrease in the size of the spheroids could be observed and this effect was more

pronounced in response to the drug combination (Figure 3A). Western blot and immunochemistry analyses of these MCTSs showed that both GDC-0941 and Saracatinib were

able to dampen the Akt and Src phosphorylation (Figure 3B, left panel). These effects were correlated with strong morphologic alterations of the spheroids (Figure 3B, right

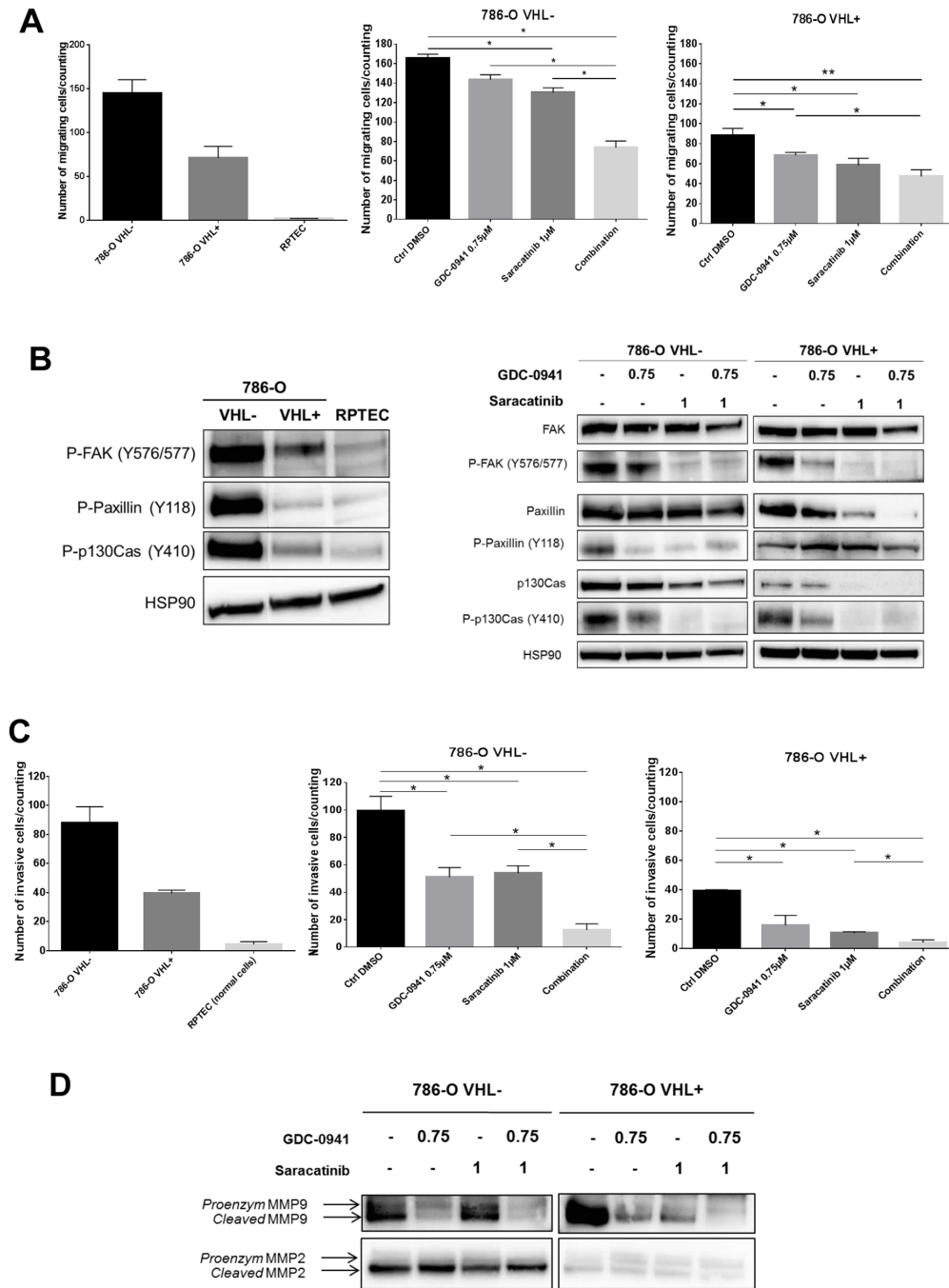


Figure 2: Mobility of renal cell lines. (A) Transwell migration assay during 6h of indicated cells untreated (upper, left panel) or treated with 0.75µM GDC-0941 or/and 1µM Saracatinib (middle and right panels). Values were expressed as mean ± SEM and the statistical significance between 2 conditions was determined by Mann-Whitney test (n=4). (B) Western blot analysis of activated proteins involved in migration using whole cell lysates of the indicated untreated cell lines (left panel) and of 786-O-WT (VHL-) or expressing -VHL treated with either GDC-0941, Saracatinib or both (right panel) were probed with indicated antibodies. (C) Transwell Invasion assay during 24h of indicated cells untreated (left panel) or treated with 0.75µM GDC-0941 or/and 1µM Saracatinib (right panels). Values were expressed as mean ± SEM and the statistical significance between 2 conditions was determined by Mann-Whitney test (n=3). (D) Western blot analysis of metalloproteases using conditioned medium of the 786-O-WT or expressing -VHL treated with either GDC-0941, Saracatinib or both during 48h.

panel). Consistent with findings obtained with 2D cultures of 786-O cells, Akt and Src expression levels were upregulated in response to either GDC-0941 or Saracatinib treatment respectively, suggesting again a potential crosstalk between these two signaling pathways. We next assessed the effects of these drugs on the proliferation and apoptotic cell death in these tumor spheroids. GDC-0941 or Saracatinib as single agent induced significant levels of apoptosis visualized by cleavage of effector caspases-3/7 and PARP together with an inhibition of proliferation (PCNA staining). Moreover, the combined treatment led to a greater anti-proliferative and pro-apoptotic activity, resulting in massive morphologic alterations of MCTSs (Figure 3C, left and right panels).

Validation of dual PI3K and Src inhibition on *ex vivo* explant cultures from renal tumor patient-derived xenografts (PDXs)

Since PDX models more accurately recapitulate the clinical trial situation, the effect of Src and PI3K inhibition was evaluated on *ex-vivo* tumor slice cultures derived from one ccRCC PDX model. As illustrated in Figure 4A, left panel, Saracatinib and GDC-0941 to a lower extent, induced a detectable cell death that was strikingly enhanced by the drug combination. Again, quantification of dead cells highlighted that combining the two drugs resulted in increased synergistic apoptosis (Figure 4, right panel). Taken together, these results demonstrate that combined inhibition of PI3K and Src induces a massive cell death in tumor slice cultures derived from a PDX model.

Orthotopic ccRCC xenografts show sensitivity to dual PI3K /Src inhibition

To test the effectiveness of inhibiting PI3K and/or Src *in vivo*, we performed orthotopic xenograft studies by injecting 786-O luc cells under the renal capsule. Drug administration started when average tumor size reached about 250 to 300 mm³. Using ccRCC vehicle-treated mice as a reference, mice were treated with GDC-0941 or Saracatinib either alone or in combination every 48h for 7 days (Figure 4B). Vehicle and GDC-0941-treated 786-O tumor grafts showed similar growth rates, whereas unexpectedly, Saracatinib significantly increased tumor growth. In contrast, tumor graft growth was substantially inhibited by the drug combination relative to single-agent Saracatinib or GDC-0941 treatment (Figure 4C). Together, these data show that a combination of PI3K/Src inhibitors was more effective against RCC tumor grafts than Saracatinib or GDC-0941 treatment alone.

DISCUSSION

Data from the literature suggest that both expression and activation of Akt and Src are associated with the

appearance of malignant phenotypes and reduced survival in renal cell carcinoma [15]. Our data extracted from the TCGA database for ccRCC patients showed that high Src and Akt mRNA expression levels are strongly associated with adverse clinical outcome. In accordance, we showed an upregulation of activated Akt and Src kinases in ccRCC clinical samples. Activation of the PI3K/Akt/mTOR pathway in RCC was found to be associated with PTEN loss that occurs in approximately 30% of the cases [40]. Therefore, PI3K is an attractive target for therapy but resistance inevitably occurs as the result of feedback activation of other oncogenic signaling pathways, limiting the clinical utilization of PI3K inhibitors [12]. Akt over activity is hard to determine in patients [41] and most of the PI3K inhibitors are not isoform specific. However, it could be worth targeting Akt/PKB pathway in combination with an easily detectable biomarker such as Src activation [13]. We showed, in Supplementary Figure 1, that when overexpressed, both Akt1 and Akt2 are of poor prognosis whereas the data are at the opposite for Akt3. All the three Akt isoforms possess a Serine at position 473 that should be phosphorylated by PI3K. Thus, even if we can't discriminate which of the three Akt isoforms is activated and targeted by our drug combination, the viability of the treated cells was strongly affected. We found that targeted inhibition of PI3K or Src in 786-O cells were moderately efficacious as single agents but showed enhanced and synergistic effect in combination. Moreover, both Akt and Src expression levels were upregulated in response to either GDC-0941 or Saracatinib treatment, suggesting parallel and compensatory targetable cross-activations in renal cell carcinoma. Several upstream effects of Src inhibition on the PI3K/Akt pathway have been reported. Src was shown to interact with and reduce the stability of PTEN resulting in an increase in the PI3K/Akt pathway [35]. PI3K inhibition promotes the induction of RTKs, suggesting that one of the drawback of PI3K inhibition is a hyper activation of RTK signaling thus explaining *de novo* treatment resistance. Indeed, we observed after GDC-0941 treatment a significant upregulation of Src targets involved in migration/invasion such as FAK, Paxillin and p130Cas suggesting the induction of an adaptive response. Migration and invasion are essential steps for metastatic dissemination of ccRCC and emerging evidence suggests that in cancer cells, Src is predominantly involved in invasion [16–21]. Blocking Src activity has anti-invasive and anti-migratory effects, inhibiting the growth of various types of cancers [36, 42–45]. Moreover, targeting Src and RTK simultaneously with Saracatinib and Sunitinib leads to synergistic inhibition of RCC proliferation and migration [16]. Thus, given its role as a common node of multiple resistance pathways, Src is an attractive target for combination therapies.

In this study, we showed that combined treatment with Saracatinib and GDC-0941 exhibited greater-than-single-agent efficacy to promote vulnerability of RCC

cells *in vitro*, impeding invasion and inducing cell death. Importantly, this combination was well tolerated,

and caused marked tumor growth inhibition in ccRCC xenografts. As GDC-0941 and Saracatinib both exhibit

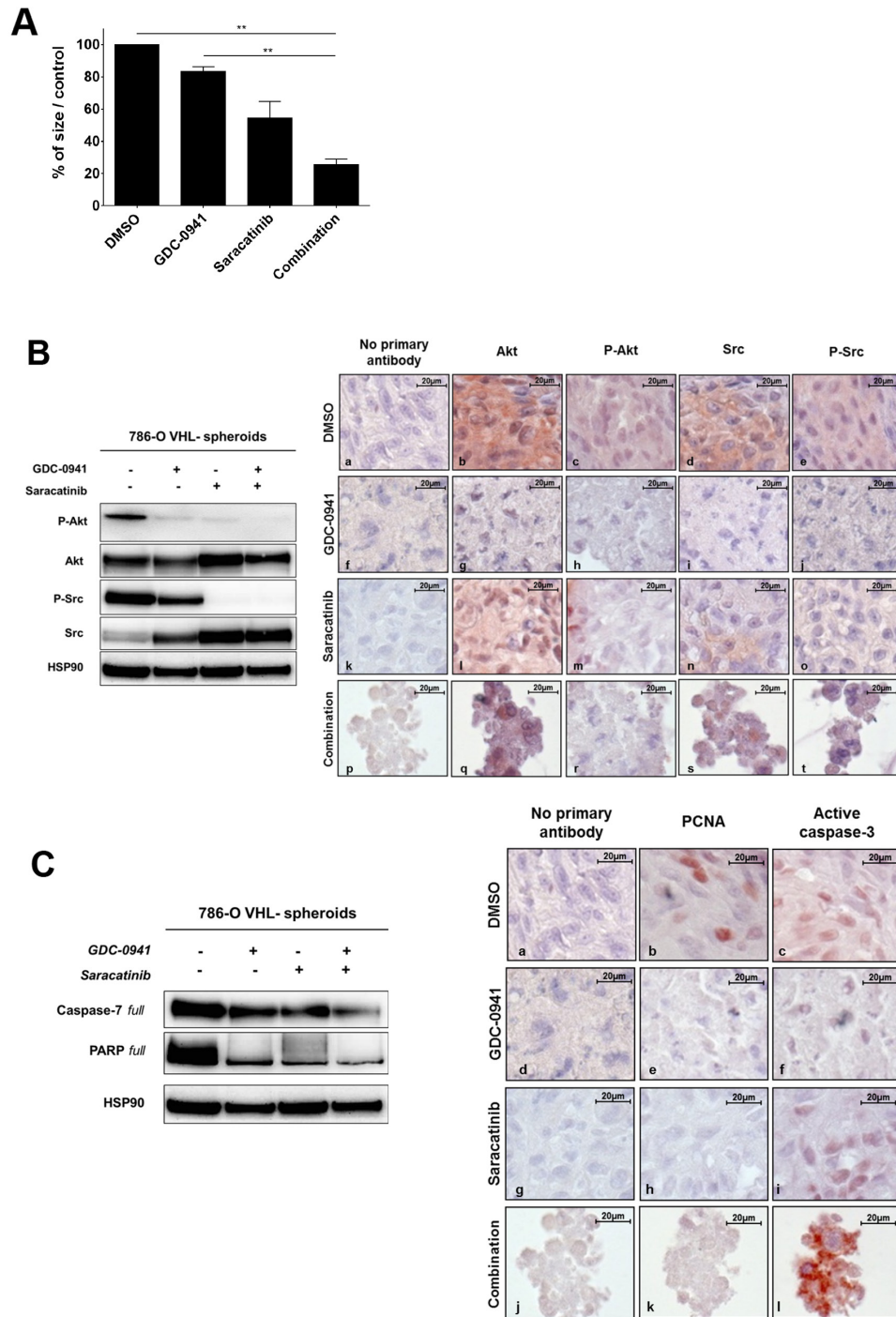


Figure 3: Spheroids. (A) 786-O-WT (VHL^{-/-}) cells were grown as spheroids and treated with 20 μ M of either GDC-0941 (G20), Saracatinib (S20) or both (G20+S20) for 72h before measuring the spheroid size that is expressed as % of the size of the treated over the untreated spheroids (Ctrl DMSO). Values were expressed as mean \pm SEM and the statistical significance between multiple conditions was determined by Kruskal-Wallis test (n=3). (B) The same spheroids treated with 20 μ M GDC-0941 or/and 20 μ M Saracatinib during 72h were analyzed by Western blot (left panel) or immunohistochemistry (right panel). Both Akt and Src were detected for their expression (b,g,l,q and d,i,n,s respectively) and activity (c,h,m,r and e,j,o,t respectively) using anti total and phospho-site antibodies. HSP90 was used as a loading control. (C) Apoptosis detection was performed on the same treated spheroids using both PARP and Caspase-7 with corresponding antibodies by western blot (left panel) or by immunohistochemistry (right panel) with PCNA (b,e,h,k) and Active Caspase 3 (c,f,i,l) antibodies.

excellent oral anticancer activity in preclinical models and have entered phase II clinical trials our findings, provide preclinical evidence for a promising pairwise

combination of FDA-approved drugs with potent anticancer activity for further mechanistic study and translation to clinical trials.

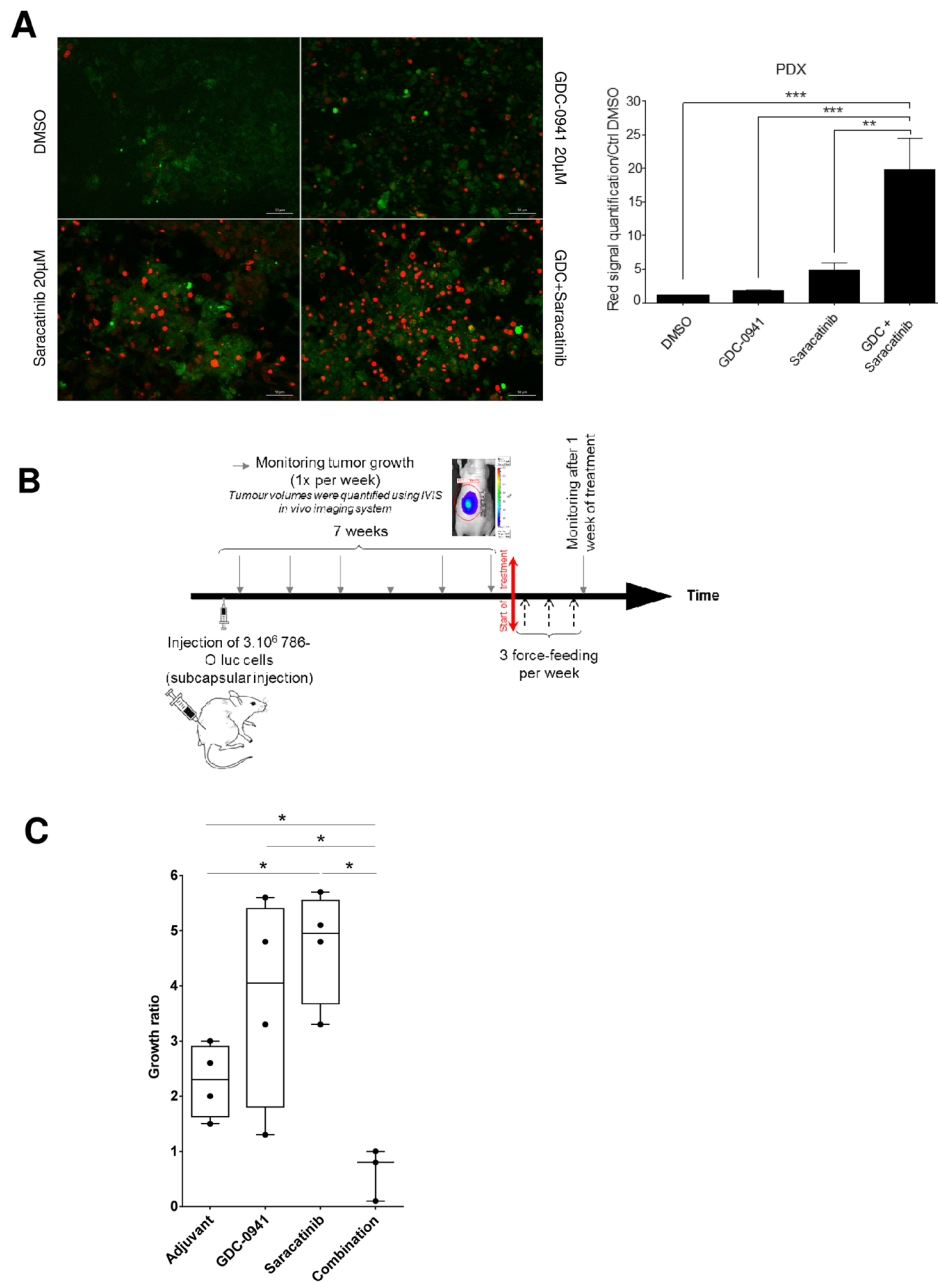


Figure 4: Tumor-suppressive effect of the combination. (A) Tissue Slice cultures of a PDX RCC model were treated with either Vehicle (DMSO), GDC-0941 (20µM), Saracatinib (20µM) or a combination of both during 72h. Red marker intensity (Ethidium Bromide=dead cells) was measured on images taken with an Apotome-equipped Zeiss microscope. Right panel: Ratio of red fluorescence intensity compared to CTRL (DMSO). Significant difference was observed between GDC-0941 (***p≤0.001), Saracatinib (**p≤0.01) alone versus combination (Mann-Whitney test for all described conditions). Bar scale 50µm. (B) Time line of *in vivo* experiment on orthotopic xenograft model using 786-O Luc cells. Tumor size was monitored by IVIS imaging. 10mg/kg of Saracatinib or/and 100mg/kg of GDC-0941 were delivered via oral force-feeding, 3 times per week. (C) Growth measurement of the tumor. For each nude mice (4 per group), the ratio of the IVIS signal after over before treatment was calculated showing that combination treatment with GDC-0941 and Saracatinib induced tumor regression whereas chemicals alone promoted tumor growth. Values were expressed as min to max and the statistical significance between multiple conditions was determined (Mann-Whitney test).

MATERIALS AND METHODS

Reagent, drugs and antibodies

Antibodies against P-FAK (Y576/577) (#3281), P-Paxillin (Y118) (#2541), P-p130Cas (Y410) (#4011), PARP (#9542), Akt (#9272), Src (#2109), Active-Caspase-3 (#9664), P-Akt (S473) (#4051), Caspase 7 (D2Q3L) (#12827), VHL (#2738), MMP2 (#4022), MMP9 (#3852) and HSP90 (#4874) were from Cell Signaling Technologies (Danvers, MA). Antibodies against Paxillin (610052), FAK (610088) and p130Cas (610271) were from BD Biosciences (San Jose, CA). Antibody against P-Src (Y418) (LF-PA20465) was purchased from AbFrontier. Antibody against PCNA was from Abcam (Cambridge, UK). GAPDH (AM4300) was purchased from Life Technologies (Carlsbad, CA). Antibody against HA-12CA5 (11666606001) was from Roche. Dimethyl sulfoxide was from Sigma Aldrich (St Louis, MO). Saracatinib and GDC-0941 were obtained from LC Laboratories (Woburn, MA).

Cell lines and culture

786-O cells, a highly metastatic cancer cell line which is null for VHL [46] were obtained from American Type Culture Collection (LGC Standards). RPTEC cells developed by overexpression of hTERT1 in normal renal proximal tubular epithelial cells were obtained from Evercyte (Germany). 786-O were grown in a humidified incubator (37°C, 5% CO₂) with RPMI 1640 medium (Gibco) containing 10% fetal calf serum, penicillin [100U/mL], streptomycin [100µg/mL]. RPTEC were cultured in ProXup medium (Evercyte). 786-Oluc were generated by Optimal Platform (Grenoble). pBABE and VHL⁺ stable cell lines were obtained by transfecting 786-O with empty expression vector HA-pBABE or a functional VHL construct HA-VHL, respectively, obtained from Addgene. Stable transfectants were maintained in medium supplemented with 3µg/ml puromycin.

Viability assay

Cytotoxicity was measured using the PrestoBlue[®] assay (Invitrogen, Carlsbad, CA). Cell lines were seeded in 96-well microtiter plates at a concentration of 1×10⁵ cells/ml. Cells were allowed to attach for 24h at 37°C in 5% CO₂. Cells were exposed to DMSO (negative control) or to Saracatinib or GDC-0941 alone or in combination with concentrations ranging between 0.1µM to 3µM and 0.25µM to 1.5µM respectively. The microtiter plates were incubated for 48h followed by the addition of 10µL PrestoBlue for 30min. The fluorescence was recorded at 580nm using a FluoStar Optima plate reader (BMG LabTech, Ortenberg/Germany).

Matrix analysis

Dose-response-matrix data were analyzed using the Highest Single Agent, the Loewe additivity and the Bliss models as described in Supplementary Material and methods.

Migration and invasion assay

Cell migration and invasion assays were performed with 786-O VHL⁻, VHL⁺ and RPTEC cells. Cells were trypsinized, counted and resuspended in serum-depleted media (0,5% FBS), and plated at 2×10⁵ cells/well in 24-well Boyden chambers for migration assay (BD Biosciences), or at 5×10⁴ cells/well in 24-well Matrigel invasion chamber plates (BD BioSciences) using 10% FBS as chemoattractant. After 6h for migration assay or 24h for invasion assay, migratory or invasive cells were fixed with PFA and stained with Hematoxylin/Eosin. Cells within an entire field that migrated through the membrane were counted with a microscope.

Spheroids culture

3-D cultures were carried out in 96-wells uncoated U-bottom tissue culture plates with low evaporation Lid (MicrotestTM, Becton Dickinson Labware, San Jose, CA) to allow the formation of multicellular spheroids. Renal cancer cells (786-O-VHL⁻ taken from exponentially growing cultures) were prepared at a density of 3×10⁴ cells/ml in EBM-2 medium (CloneticsR Lonza, Walkerville, MD) supplemented with 5% FCS, EGM-2MV (Lonza) and 0.2% (w/v) methylcellulose. One hundred µL (3×10³ cells) of this cell suspension were seeded in each well and the tissue culture plates were incubated at 37°C in 5% CO₂ for 2 days before the addition of GDC-0941 and/or Saracatinib [47]. Drugs were prepared in EBM-2 medium at the desired concentration to give a final concentration ranging from 5µM to 30µM. Spheroids were grown in normoxic conditions and after 3 days of culture, the diameters of the spheroids were measured and the cell viability was evaluated using the PrestoBlue[®] cell viability reagent. Spheroids were also washed twice with PBS and used for Western blot or immunohistochemistry analysis.

Western blot analysis

Cell pellets were suspended in 150µl of lysis buffer (RIPA buffer: Tris HCl pH 7.4 10mM, NaCl 150mM, SDS 0.1%, Na Deoxycholate 0.5%, EDTA 1mM, Triton X100 1%, Protease and phosphatase inhibitor cocktails (P8340 and P5726, Sigma, St Louis)). Protein concentration was determined using the BCA protein Assay kit (Thermo Scientific). Protein extracts (20 µg/lane) were separated by electrophoresis on SDS-PAGE using pre-cast 4-12% gradient gel (Bio-Rad) at 150 volts for 75 min. Separated

proteins were transferred onto polyvinylidene difluoride (PVDF) membranes (60 min at 100 Volts). Blotted membranes were blocked for 1h at room temperature in 1% BSA in TBST (50mM Tris-HCl (pH 7.5), 150mM NaCl, 0.2% Tween 20) and then incubated for 90 min at room temperature or overnight at 4°C with the appropriate primary antibody diluted in saturation buffer, followed by incubation with horseradish peroxidase (HRP)-conjugated secondary antibodies and detected by enhanced chemiluminescence. Anti-GAPDH or HSP90 were used as control for equal protein loading.

Immunohistochemistry

Sections (5µm thick) of formalin-fixed, paraffin embedded tumor tissue samples were dewaxed, rehydrated and subjected to antigen retrieval in citrate buffer (Antigen Unmasking Solution, Vector Laboratories) with heat. Slides were incubated for 10min in hydrogen peroxide H₂O₂ to block endogenous peroxidases and then 30min in saturation solution (Histostain, Invitrogen) to block nonspecific antibody binding. This followed by overnight incubation with primary antibody at 4°C. After washing, sections were incubated with a suitable biotinylated secondary antibody (Histostain, Invitrogen) for 10min. Antigen-antibody complexes were visualized by applying a streptavidin-biotin complex (Histostain, Invitrogen) for 10min followed by NovaRED substrate (Vector Laboratories). Sections were counterstained with hematoxylin to visualize nucleus. Control sections were incubated with pool secondary antibodies without primary antibody.

In vivo orthotopic tumor xenograft models

All animal studies were approved by the institutional guidelines and those formulated by the European Community for the Use of Experimental Animals. Six week-old BALB/c Female nude mice (Charles River Laboratories) with a mean body weight of 18-20g were used to establish orthotopic xenograft tumor models. The mice were housed and fed under specific pathogen-free conditions.

To produce tumors, renal cancer cells 786-O-luc (VHL-) were harvested from subconfluent cultures by a brief exposure to 0.25% trypsin-EDTA. Trypsinization was stopped with medium containing 10% FBS, and the cells were washed once in serum-free medium and resuspended in 500µl PBS. Renal orthotopic implantation was carried out by injection of 3×10⁶ 786-O luc cells into the right kidney of athymic nude mice. Seven weeks after the implantation of the xenografts, animals were randomly divided into treated and untreated groups. Mice were treated with vehicle (0.5% Tween 80), GDC-0941 (100mg/kg), Saracatinib (10mg/kg), or their combination by force-feeding, three times a week. Mice were weighed once a week to monitor their health and tumor growth was

measured by imaging luminescence of 786-O-luc cells (IVIS).

A PDX model RCC-10-B was generated by Xentech, (Paris France). Briefly, tumor fragments (30mm³) were grafted in the inter-scapular subcutaneous tissue, one fragment per mouse. Tumors are metastasis in the lymph node of Clear cell/granular kidney Carcinoma. The status of VHL gene was determined as mutated (E160fs14aa (chr3-10191481-G->GA- (frameshift insertion) for RCC10B.

Fresh tissue sectioning

A Vibratome VT1200 (Leica Microsystems) was used to cut thin (300µm) slices from fresh tissue. Samples were soaked in ice-cold sterile balanced salt solution (HBSS), orientated, mounted, and immobilized using cyanoacrylate glue. Slicing speed was optimized according to tissue density and type; in general, slower slicing speed was used on the softer tissues and *vice versa* (0.08-0.12mm/s neoplastic tissue; 0.01-0.08mm/s normal tissue). Vibration amplitude was set at 2.95-3.0mm.

Organotypic tissue cultures

Tissue slices were cultured on organotypic inserts for up to 96h (one slice per insert; Millipore). Organotypic inserts are Teflon membranes with 0.4µm pores that allow preservation of 3D tissue structure in culture. Tissue culture was performed at 37°C in a 5% CO₂ humidified incubator using 1ml of DMEM media supplemented with 20% inactivated FBS (GIBCO), 100 U/ml penicillin (Invitrogen) and place in a rotor agitator to allow gas and fluids exchanges with the medium. The tissue slices were incubated with the drugs at the indicated concentrations and after 72h, they were stained with the Live & Dead kit (Life technologies) as recommended. Images were taken with an Apotome-equipped Zeiss Axioimager microscope and dead cells were quantified using ImageJ.

Statistical analysis

Experimental data are shown as mean ± standard error mean (SEM). Statistical analyses were performed using one-way analysis of variance (ANOVA) with multiple comparisons test (GraphPad Prism 6). A P value of less than 0.05 was considered to be statistically significant. *P < 0.05, **P < 0.01, ***P < 0.001 and ****P < 0.0001.

U Mann-Whitney tests were used to evaluate the significance of differential tumor growth and differential behavior between cell lines. The difference was considered significant when P was <0.05. Statistical analysis was performed using GraphPad, InStat Statistical Software, V6.00, San Diego, CA.

Survival plots were performed in R version 3.3.2 (ref. [48]) using the survival library [49]. Data

were generated by the TCGA Research Network (<http://cancergenome.nih.gov/>) and normalized and retrieved from OncoLnc [50].

Abbreviations

ccRCC, clear cell renal cell carcinomas; PDX, Patient Derived Xenograft; FDA, Food and Drug Administration; EGFR, Epidermal Growth Factor Receptor; MCTS, multicellular tumor spheroid; PFA, Para-Formaldehyde; SEM, Standard error mean VHL, von Hippel-Lindau; FAK, Focal Adhesion Kinase; RPTEC, Renal Proximal Tubular Epithelial cell; MMP, Matrix Metalloproteinase; 3D, three dimensions; BSA, Bovine Serum Albumin; HRP, Horse Radish Peroxidase.

Author contributions

Conception and design: C.C., F.O.
Development of methodology: R.C., A.V., C.P., F.O.
Acquisition of data: R.C., B.R., G.S., C.P., P.C.
Analysis and interpretation of data: R.C., G.S., C.P., P.C., G.L., B.O., C.C., F.O.
Writing of the manuscript: C.C., F.O. with contribution from all authors.

ACKNOWLEDGMENTS

We thank the animal unit staff (Jeannin I., Bama S. Chaumontel N. and Pointu H.) at Biosciences and Biotechnology Institute of Grenoble (BIG) for animal husbandry, the Urology unit of Hospital Center for renal tissue samples.

CONFLICTS OF INTEREST

The authors declare no potential conflicts of interest.

FUNDING

This work was supported by recurrent institutional funding from INSERM, CEA, Ligue Nationale contre le Cancer (accredited team 2010-2012) and Ligue Comité de la Drome, University Grenoble Alpes, GEFLUC and GRAL.

REFERENCES

1. Sourbier C, Lindner V, Lang H, Agouni A, Schordan E, Danilin S, Rothhut S, Jacqmin D, Helwig JJ, Massfelder T. The phosphoinositide 3-kinase/Akt pathway: a new target in human renal cell carcinoma therapy. *Cancer Res.* 2006; 66:5130–42. <https://doi.org/10.1158/0008-5472.CAN-05-1469>.
2. Merseburger AS, Hennenlotter J, Kuehs U, Simon P, Kruck S, Koch E, Stenzl A, Kuczyk MA. Activation of PI3K is associated with reduced survival in renal cell carcinoma. *Urol Int.* 2008; 80:372–7. <https://doi.org/10.1159/000132694>.
3. Qian CN, Furge KA, Knol J, Huang D, Chen J, Dykema KJ, Kort EJ, Massie A, Khoo SK, Vanden Beldt K, Resau JH, Anema J, Kahnoski RJ, et al. Activation of the PI3K/AKT pathway induces urothelial carcinoma of the renal pelvis: identification in human tumors and confirmation in animal models. *Cancer Res.* 2009; 69:8256–64. <https://doi.org/10.1158/0008-5472.CAN-09-1689>.
4. Dormoy V, Danilin S, Lindner V, Thomas L, Rothhut S, Coquard C, Helwig JJ, Jacqmin D, Lang H, Massfelder T. The sonic hedgehog signaling pathway is reactivated in human renal cell carcinoma and plays orchestral role in tumor growth. *Mol Cancer.* 2009; 8:123. <https://doi.org/10.1186/1476-4598-8-123>.
5. Xu L, Zhu Y, Xu J, Wu K, Li J, Xu W, Liu H, Wang S, Yin H, Chen L, Wang G, Lin Z. Notch1 activation promotes renal cell carcinoma growth via PI3K/Akt signaling. *Cancer Sci.* 2012; 103:1253–8. <https://doi.org/10.1111/j.1349-7006.2012.02291.x>.
6. Hager M, Haufe H, Kemmerling R, Hitzl W, Mikuz G, Moser PL, Kolbitsch C. Increased activated Akt expression in renal cell carcinomas and prognosis. *J Cell Mol Med.* 2009; 13:2181–8. <https://doi.org/10.1111/j.1582-4934.2008.00488.x>.
7. Guo H, German P, Bai S, Barnes S, Guo W, Qi X, Lou H, Liang J, Jonasch E, Mills GB, Ding Z. The PI3K/AKT Pathway and Renal Cell Carcinoma. *J Genet Genomics.* 2015; 42:343–53. <https://doi.org/10.1016/j.jgg.2015.03.003>.
8. Fruman DA, Rommel C. PI3K and cancer: lessons, challenges and opportunities. *Nat Rev Drug Discov.* 2014; 13:140–56. <https://doi.org/10.1038/nrd4204>.
9. Folkes AJ, Ahmadi K, Alderton WK, Alix S, Baker SJ, Box G, Chuckowree IS, Clarke PA, Depledge P, Eccles SA, Friedman LS, Hayes A, Hancox TC, et al. The identification of 2-(1H-indazol-4-yl)-6-(4-methanesulfonyl-piperazin-1-ylmethyl)-4-morpholin-4-yl-t hieno[3,2-d]pyrimidine (GDC-0941) as a potent, selective, orally bioavailable inhibitor of class I PI3 kinase for the treatment of cancer. *J Med Chem.* 2008; 51:5522–32. <https://doi.org/10.1021/jm800295d>.
10. Cawthorne C, Burrows N, Gieling RG, Morrow CJ, Forster D, Gregory J, Radigois M, Smigova A, Babur M, Simpson K, Hodgkinson C, Brown G, McMahon A, et al. [18F]-FLT positron emission tomography can be used to image the response of sensitive tumors to PI3-kinase inhibition with the novel agent GDC-0941. *Mol Cancer Ther.* 2013; 12:819–28. <https://doi.org/10.1158/1535-7163.MCT-12-0905>.
11. Sarker D, Ang JE, Baird R, Kristeleit R, Shah K, Moreno V, Clarke PA, Raynaud FI, Levy G, Ware JA, Mazina K, Lin R, Wu J, et al. First-in-human phase I study of pictilisib (GDC-0941), a potent pan-class I phosphatidylinositol-3-kinase (PI3K) inhibitor, in patients with advanced solid tumors. *Clin Cancer Res.* 2015; 21:77–86. <https://doi.org/10.1158/1078-0432.CCR-14-0947>.

12. Jonasch E, Signorovitch JE, Lin PL, Liu Z, Culver K, Pal SK, Scott JA, Vogelzang NJ. Treatment patterns in metastatic renal cell carcinoma: a retrospective review of medical records from US community oncology practices. *Curr Med Res Opin.* 2014; 30:2041–50. <https://doi.org/10.1185/03007995.2014.938730>.
13. Pons-Tostivint E, Thibault B, Guillermet-Guibert J. Targeting PI3K signaling in combination cancer therapy. *Trends Cancer.* 2017; 3:454–69. <https://doi.org/10.1016/j.trecan.2017.04.002>.
14. Minner S, Rump D, Tennstedt P, Simon R, Burandt E, Terracciano L, Moch H, Wilczak W, Bokemeyer C, Fisch M, Sauter G, Eichelberg C. Epidermal growth factor receptor protein expression and genomic alterations in renal cell carcinoma. *Cancer.* 2012; 118:1268–75. <https://doi.org/10.1002/ncr.26436>.
15. Yonezawa Y, Nagashima Y, Sato H, Virgona N, Fukumoto K, Shirai S, Hagiwara H, Seki T, Ariga T, Senba H, Suzuki K, Asano R, Hagiwara K, et al. Contribution of the Src family of kinases to the appearance of malignant phenotypes in renal cancer cells. *Mol Carcinog.* 2005; 43:188–97. <https://doi.org/10.1002/mc.20109>.
16. Bai L, Yang JC, Ok JH, Mack PC, Kung HJ, Evans CP. Simultaneous targeting of Src kinase and receptor tyrosine kinase results in synergistic inhibition of renal cell carcinoma proliferation and migration. *Int J Cancer.* 2012; 130:2693–702. <https://doi.org/10.1002/ijc.26303>.
17. Brunton VG, Frame MC. Src and focal adhesion kinase as therapeutic targets in cancer. *Curr Opin Pharmacol.* 2008; 8:427–32. <https://doi.org/10.1016/j.coph.2008.06.012>.
18. Eustace AJ, Crown J, Clynes M, O'Donovan N. Preclinical evaluation of dasatinib, a potent Src kinase inhibitor, in melanoma cell lines. *J Transl Med.* 2008; 6:53. <https://doi.org/10.1186/1479-5876-6-53>.
19. Wu W, Wang Y, Xu Y, Liu Y, Wang Y, Zhang H. Dysregulated activation of c-Src in gestational trophoblastic disease contributes to its aggressive progression. *Placenta.* 2014; 35:824–30. <https://doi.org/10.1016/j.placenta.2014.07.012>.
20. Majid S, Saini S, Dar AA, Hirata H, Shahryari V, Tanaka Y, Yamamura S, Ueno K, Zaman MS, Singh K, Chang I, Deng G, Dahiya R, et al. MicroRNA-205 inhibits Src-mediated oncogenic pathways in renal cancer. *Cancer Res.* 2011; 71:2611–21. <https://doi.org/10.1158/0008-5472.CAN-10-3666>.
21. Veracini L, Grall D, Schaub S, Beghelli-de la Forest Divonne S, Etienne-Grimaldi MC, Milano G, Bozec A, Babin E, Sudaka A, Thariat J, Van Obberghen-Schilling E. Elevated Src family kinase activity stabilizes E-cadherin-based junctions and collective movement of head and neck squamous cell carcinomas. *Oncotarget.* 2015; 6:7570–83. <https://doi.org/10.18632/oncotarget.3071>.
22. Zhang S, Huang WC, Li P, Guo H, Poh SB, Brady SW, Xiong Y, Tseng LM, Li SH, Ding Z, Sahin AA, Esteva FJ, Hortobagyi GN, et al. Combating trastuzumab resistance by targeting SRC, a common node downstream of multiple resistance pathways. *Nat Med.* 2011; 17:461–9. <https://doi.org/10.1038/nm.2309>.
23. Zhang S, Yu D. Targeting Src family kinases in anti-cancer therapies: turning promise into triumph. *Trends Pharmacol Sci.* 2012; 33:122–8. <https://doi.org/10.1016/j.tips.2011.11.002>.
24. Hennequin LF, Allen J, Breed J, Curwen J, Fennell M, Green TP, Lambert-van der Brempt C, Morgentin R, Norman RA, Olivier A, Otterbein L, Ple PA, Warin N, et al. N-(5-chloro-1,3-benzodioxol-4-yl)-7-[2-(4-methylpiperazin-1-yl)ethoxy]-5-(tetrahydro-2H-pyran-4-yloxy)quinazolin-4-amine, a novel, highly selective, orally available, dual-specific c-Src/Abl kinase inhibitor. *J Med Chem.* 2006; 49:6465–88. <https://doi.org/10.1021/jm060434q>.
25. Gucalp A, Sparano JA, Caravelli J, Santamauro J, Patil S, Abbruzzi A, Pellegrino C, Bromberg J, Dang C, Theodoulou M, Massague J, Norton L, Hudis C, et al. Phase II trial of saracatinib (AZD0530), an oral SRC-inhibitor for the treatment of patients with hormone receptor-negative metastatic breast cancer. *Clin Breast Cancer.* 2011; 11:306–11. <https://doi.org/10.1016/j.clbc.2011.03.021>.
26. Molina JR, Foster NR, Reungwetwattana T, Nelson GD, Grainger AV, Steen PD, Stella PJ, Marks R, Wright J, Adjei AA. A phase II trial of the Src-kinase inhibitor saracatinib after four cycles of chemotherapy for patients with extensive stage small cell lung cancer: NCCTG trial N-0621. *Lung Cancer.* 2014; 85:245–50. <https://doi.org/10.1016/j.lungcan.2014.03.004>.
27. Reddy SM, Kopetz S, Morris J, Parikh N, Qiao W, Overman MJ, Fogelman D, Shureiqi I, Jacobs C, Malik Z, Jimenez CA, Wolff RA, Abbruzzese JL, et al. Phase II study of saracatinib (AZD0530) in patients with previously treated metastatic colorectal cancer. *Invest New Drugs.* 2015; 33:977–84. <https://doi.org/10.1007/s10637-015-0257-z>.
28. Cheskis BJ, Greger J, Cooch N, McNally C, McLamey S, Lam HS, Rutledge S, Mekonnen B, Hauze D, Nagpal S, Freedman LP. MNAR plays an important role in ERα activation of Src/MAPK and PI3K/Akt signaling pathways. *Steroids.* 2008; 73:901–5. <https://doi.org/10.1016/j.steroids.2007.12.028>.
29. Chen B, Xu X, Luo J, Wang H, Zhou S. Rapamycin enhances the anti-cancer effect of dasatinib by suppressing Src/PI3K/mTOR pathway in NSCLC cells. *PLoS One.* 2015; 10:e0129663. <https://doi.org/10.1371/journal.pone.0129663>.
30. Strunk U, Ramos DG, Saffran HA, Smiley JR. Role of Herpes simplex virus 1 VP11/12 tyrosine-based binding motifs for Src family kinases, p85, Grb2 and Shc in activation of the phosphoinositide 3-kinase-Akt pathway. *Virology.* 2016; 498:31–5. <https://doi.org/10.1016/j.virol.2016.08.007>.
31. Ke L, Xiang Y, Guo X, Lu J, Xia W, Yu Y, Peng Y, Wang L, Wang G, Ye Y, Yang J, Liang H, Kang T, Lv X. c-Src activation promotes nasopharyngeal carcinoma metastasis by inducing the epithelial-mesenchymal transition via PI3K/Akt signaling pathway: a new and promising target for NPC. *Oncotarget.* 2016; 7:28340–55. <https://doi.org/10.18632/oncotarget.8634>.
32. Kiefel H, Bondong S, Pfeifer M, Schirmer U, Erbe-Hoffmann N, Schafer H, Sebens S, Altevogt P. EMT-associated up-regulation of LICAM provides insights into LICAM-mediated integrin signalling and NF-kappaB activation. *Carcinogenesis.* 2012; 33:1919–29. <https://doi.org/10.1093/carcin/bgs220>.

33. Lehar J, Zimmermann GR, Krueger AS, Molnar RA, Ledell JT, Heilbut AM, Short GF 3rd, Giusti LC, Nolan GP, Magid OA, Lee MS, Borisy AA, Stockwell BR, et al. Chemical combination effects predict connectivity in biological systems. *Mol Syst Biol.* 2007; 3:80. <https://doi.org/10.1038/msb4100116>.
34. Fukata S, Inoue K, Kamada M, Kawada C, Furihata M, Ohtsuki Y, Shuin T. Levels of angiogenesis and expression of angiogenesis-related genes are prognostic for organ-specific metastasis of renal cell carcinoma. *Cancer.* 2005; 103:931–42. <https://doi.org/10.1002/cncr.20887>.
35. Lu Y, Yu Q, Liu JH, Zhang J, Wang H, Koul D, McMurray JS, Fang X, Yung WK, Siminovich KA, Mills GB. Src family protein-tyrosine kinases alter the function of PTEN to regulate phosphatidylinositol 3-kinase/AKT cascades. *J Biol Chem.* 2003; 278:40057–66. <https://doi.org/10.1074/jbc.M303621200>.
36. Pichot CS, Hartig SM, Xia L, Arvanitis C, Monisvais D, Lee FY, Frost JA, Corey SJ. Dasatinib synergizes with doxorubicin to block growth, migration, and invasion of breast cancer cells. *Br J Cancer.* 2009; 101:38–47. <https://doi.org/10.1038/sj.bjc.6605101>.
37. Jacks T, Weinberg RA. Taking the study of cancer cell survival to a new dimension. *Cell.* 2002; 111:923–5.
38. Yamada KM, Cukierman E. Modeling tissue morphogenesis and cancer in 3D. *Cell.* 2007; 130:601–10. <https://doi.org/10.1016/j.cell.2007.08.006>.
39. Debnath J, Brugge JS. Modelling glandular epithelial cancers in three-dimensional cultures. *Nat Rev Cancer.* 2005; 5:675–88. <https://doi.org/10.1038/nrc1695>.
40. Zeng L, Bai M, Mittal AK, El-Jouni W, Zhou J, Cohen DM, Zhou MI, Cohen HT. Candidate tumor suppressor and pVHL partner Jade-1 binds and inhibits AKT in renal cell carcinoma. *Cancer Res.* 2013; 73:5371–80. <https://doi.org/10.1158/0008-5472.CAN-12-4707>.
41. Brown JS, Banerji U. Maximising the potential of AKT inhibitors as anti-cancer treatments. *Pharmacol Ther.* 2017; 172:101–15. <https://doi.org/10.1016/j.pharmthera.2016.12.001>.
42. Carragher NO, Walker SM, Scott Carragher LA, Harris F, Sawyer TK, Brunton VG, Ozanne BW, Frame MC. Calpain 2 and Src dependence distinguishes mesenchymal and amoeboid modes of tumour cell invasion: a link to integrin function. *Oncogene.* 2006; 25:5726–40. <https://doi.org/10.1038/sj.onc.1209582>.
43. Koppikar P, Choi SH, Egloff AM, Cai Q, Suzuki S, Freilino M, Nozawa H, Thomas SM, Gooding WE, Siegfried JM, Grandis JR. Combined inhibition of c-Src and epidermal growth factor receptor abrogates growth and invasion of head and neck squamous cell carcinoma. *Clin Cancer Res.* 2008; 14:4284–91. <https://doi.org/10.1158/1078-0432.CCR-07-5226>.
44. Shor AC, Keschman EA, Lee FY, Muro-Cacho C, Letson GD, Trent JC, Pledger WJ, Jove R. Dasatinib inhibits migration and invasion in diverse human sarcoma cell lines and induces apoptosis in bone sarcoma cells dependent on SRC kinase for survival. *Cancer Res.* 2007; 67:2800–8. <https://doi.org/10.1158/0008-5472.CAN-06-3469>.
45. Wang SE, Xiang B, Zent R, Quaranta V, Pozzi A, Arteaga CL. Transforming growth factor beta induces clustering of HER2 and integrins by activating Src-focal adhesion kinase and receptor association to the cytoskeleton. *Cancer Res.* 2009; 69:475–82. <https://doi.org/10.1158/0008-5472.CAN-08-2649>.
46. Petrella BL, Brinckerhoff CE. PTEN suppression of YY1 induces HIF-2 activity in von-Hippel-Lindau-null renal-cell carcinoma. *Cancer Biol Ther.* 2009; 8:1389–401.
47. Champelovier P, Mininno M, Duchamp E, Nicolle E, Curri V, Boumendjel A, Boutonnat J. Cytotoxicity of chalcone derivatives towards glioblastoma. *Anticancer Res.* 2011; 31:3213–8.
48. Team RC. A language and environment for statistical computing. R Foundation for Statistical Computing 2016.
49. Therneau T. A Package for Survival Analysis in S version 2.38. 2015.
50. Anaya J. OncoLnc: linking TCGA survival data to mRNAs, miRNAs, and lncRNAs. *PeerJ Comput Sci.* 2016; 2:e67.