



HAL
open science

Si and Ge allotrope heterostructured nanowires: experimental evaluation of the thermal conductivity reduction

Aymen Ben Amor, Doriane Djomani, Mariam Fakhfakh, Stefan Dilhaire,
Laetitia Vincent, Stéphane Grauby

► To cite this version:

Aymen Ben Amor, Doriane Djomani, Mariam Fakhfakh, Stefan Dilhaire, Laetitia Vincent, et al.. Si and Ge allotrope heterostructured nanowires: experimental evaluation of the thermal conductivity reduction. *Nanotechnology*, 2019, 30 (37), pp.375704. 10.1088/1361-6528/ab29a6 . hal-02174973

HAL Id: hal-02174973

<https://hal.science/hal-02174973v1>

Submitted on 5 Jul 2019

HAL is a multi-disciplinary open access archive for the deposit and dissemination of scientific research documents, whether they are published or not. The documents may come from teaching and research institutions in France or abroad, or from public or private research centers.

L'archive ouverte pluridisciplinaire **HAL**, est destinée au dépôt et à la diffusion de documents scientifiques de niveau recherche, publiés ou non, émanant des établissements d'enseignement et de recherche français ou étrangers, des laboratoires publics ou privés.

ACCEPTED MANUSCRIPT

Si and Ge allotrope heterostructured nanowires: experimental evaluation of the thermal conductivity reduction

To cite this article before publication: Aymen Ben Amor *et al* 2019 *Nanotechnology* in press <https://doi.org/10.1088/1361-6528/ab29a6>

Manuscript version: Accepted Manuscript

Accepted Manuscript is “the version of the article accepted for publication including all changes made as a result of the peer review process, and which may also include the addition to the article by IOP Publishing of a header, an article ID, a cover sheet and/or an ‘Accepted Manuscript’ watermark, but excluding any other editing, typesetting or other changes made by IOP Publishing and/or its licensors”

This Accepted Manuscript is © 2019 IOP Publishing Ltd.

During the embargo period (the 12 month period from the publication of the Version of Record of this article), the Accepted Manuscript is fully protected by copyright and cannot be reused or reposted elsewhere.

As the Version of Record of this article is going to be / has been published on a subscription basis, this Accepted Manuscript is available for reuse under a CC BY-NC-ND 3.0 licence after the 12 month embargo period.

After the embargo period, everyone is permitted to use copy and redistribute this article for non-commercial purposes only, provided that they adhere to all the terms of the licence <https://creativecommons.org/licenses/by-nc-nd/3.0>

Although reasonable endeavours have been taken to obtain all necessary permissions from third parties to include their copyrighted content within this article, their full citation and copyright line may not be present in this Accepted Manuscript version. Before using any content from this article, please refer to the Version of Record on IOPscience once published for full citation and copyright details, as permissions will likely be required. All third party content is fully copyright protected, unless specifically stated otherwise in the figure caption in the Version of Record.

View the [article online](#) for updates and enhancements.

Si and Ge allotrope heterostructured nanowires: experimental evaluation of the thermal conductivity reduction

*Aymen Ben Amor¹, Doriane Djomani², Mariam Fakhfakh², Stefan Dilhaire¹, Laetitia
Vincent², and Stéphane Grauby^{1,*}*

¹ Univ. Bordeaux, LOMA, CNRS UMR 5798, F-33400 Talence, France.

²C2N - CNRS, Univ. Paris-Sud, Université Paris Saclay, 91405 Orsay, France.

*corresponding author : stephane.grauby@u-bordeaux.fr

Abstract

We have studied the thermal conductivity of Ge and Si allotrope heterostructured nanowires (NWs) synthesized by phase transformation. The NWs are composed of successive hexagonal 2H and cubic diamond 3C crystal phase along the $\langle 111 \rangle$ axis. Using 3ω -SThM (Scanning Thermal Microscopy) on NWs embedded in a silica matrix, we present the first experimental evidence of thermal conductivity reduction in such allotrope 2H/3C heterostructured NWs.

In Ge heterostructured 2H/3C NWs, similarly to homogeneous 3C NWs, we show a thermal conductivity reduction when the NW diameter decreases. In addition, in Si and Ge NWs, we observe a reduced thermal conductivity due to the heterostructuration 2H/3C.

We evidence that the temperature of phase transformation, which influences the size and the number of 2H domains, can constitute an efficient parameter to tune the thermal conductivity.

Keywords: thermal conductivity, allotrope heterostructured nanowires, Germanium, Silicon

I. INTRODUCTION

The main promising strategy for optimising thermoelectric power of current materials stands in nanostructuration providing the possibility to independently reduce the thermal conductivity without affecting the electrical conductivity [1]. This can be the case for nanostructured materials for which at least one dimension is smaller than the phonon mean free path and larger than the electron mean free path: they hence behave as phonon glasses and electron crystals[2]. As a consequence, one-dimensional systems such as nanowires (NWs) can be very good candidates for thermoelectric applications.

In particular, group IV semiconductors (Si, Ge, SiGe) are widely studied since devices could take advantages on abundant non-toxic material and Si-compatible technology on one side and on good thermoelectric properties on the other side. For these materials, the phonon mean free path at room temperature is classically around a few hundred nanometers while the electron mean free path is only a few nanometers. Then, NWs with diameters between 20 and 200 nm are of prime interest. For instance, the ZT of Si in bulk is lower than 0.01 at 300 K, and reaches around 0.5-0.6 in 20-200 nm diameter Si NWs [3,4]. The 1D-shape enhances the influence of surface and allows the combination of different materials (such as SiGe lattices) both reducing drastically the thermal conductivity. Indeed NWs are promising nanostructures for thermoelectricity and they can be advantageously integrated in thermoelectric generators based on vertical NW arrays [5,6].

Another route of nanostructuration is the formation of polytype heterostructures within the NWs. In [7], the authors have synthesized twin superlattices in GaP NWs via VLS growth mechanism and shown that both chemical potential and surface energies are key parameters in determining the twin density. In the case of Si or Ge NWs, the polytype synthesis cannot be obtained during the growth. Indeed, recently we have developed an original method based on top-down etching to achieve phase transformation in Si and Ge nanowires under external

1
2
3 stress [8,9]. $\langle 111 \rangle$ -oriented NWs with standard diamond structure 3C undergo a phase
4 transformation toward the 2H hexagonal phase. The phase transformation occurs
5 heterogeneously along the length of the NW resulting in a quasi-periodic superlattice of
6 3C/2H heterostructures with abrupt interfaces along the NWs. The structure is stable at least
7 up to 600°C. As the heterostructuration is not performed during growth but by phase
8 transformation after the nanowire top down etching, we point out that the orientation
9 relationship between the 3C and 2H bands is $[1-10]_{3C} // [-2110]_{2H}$ and $(110)_{3C} // (0001)_{2H}$. It
10 is clearly not the usual one obtained by VLS growth for III/V nanowires for instance that is
11 $(111)_{3C} // (0001)_{2H}$.

12
13
14
15
16
17
18
19
20
21
22
23
24
25
26
27
28
29
30
31
32
33
34
35
36
37
38
39
40
41
42
43
44
45
46
47
48
49
50
51
52
53
54
55
56
57
58
59
60
According to theoretical calculations, these novel axial allotrope heterostructures could
provide substantial benefits for phonon dispersion. The first calculations of phonon transport
performed by PBTE (first-principle-based Peierls-Boltzmann transport equation) indicate a
reduction by a factor of 2 of the thermal conductivity in Si-2H with respect to Si-3C [10]. On
the other hand, the presence of structural discontinuities 2H/3C in a chemically homogeneous
Ge NW is expected to reduce the thermal conductance [11].

To experimentally evaluate the thermal conductivity of NWs, most measurements are
performed using microfabricated suspended devices providing an heat source and an heat
sink [12,13]. This configuration enables the three parameters (Seebeck coefficient S , electrical
conductivity σ and thermal conductivity λ) involved in the ZT figure of merit to be evaluated
at the same time [3,13,14]. Moreover, the measurements with this type of microfabricated
devices can be performed over a wide range of temperature providing access to the underlying
physics. But it is worth mentioning that this technique measures the thermal conductivity of
one isolated NW which can be quite different from the thermal conductivity of the NWs
embedded in the matrix, which constitutes the effective functioning device, because of the

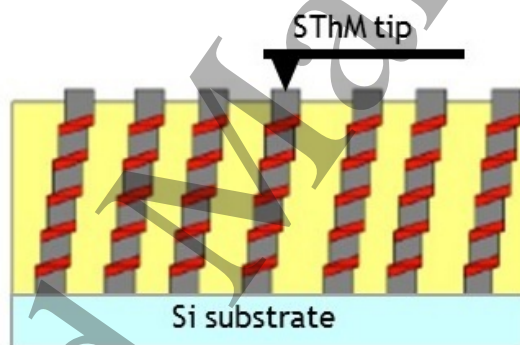
1
2
3 matrix/NWs interaction[15]. In addition the fabrication of the device to be characterized
4
5 requires many heavy processing steps that may deteriorate and/or contaminate the NW.
6
7

8 Another approach consists in using an Atomic Force Microscope equipped with a
9
10 temperature sensor, either a thermocouple or a thermoresistive tip. This technique is called
11
12 Scanning Thermal Microscopy (SThM) and enables to do temperature or thermal conductivity
13
14 imaging[16-18]. In our case, we have developed an experimental set-up using SThM with a
15
16 thermoresistive tip which operates in an active regime called 3ω -SThM (Scanning Thermal
17
18 Microscopy). It allows to record thermal images of individual NWs with a 100 nm typical
19
20 thermal spatial resolution and a 10 nm typical topographical spatial resolution. This technique
21
22 has the advantage to thermally probe a wide range of individual NWs embedded in their
23
24 matrix in a few minutes. We can hence deduce a mean thermal conductivity of the NWs by a
25
26 statistical data processing.
27
28
29
30
31

32 In this paper, we first recall, in section II, the experimental procedure including sample
33
34 fabrication, principle of the measurement set-up as well as the experimental conditions and
35
36 limitations. Then, we present thermal conductivity measurements of $\langle 111 \rangle$ oriented 3C/2H
37
38 heterostructured NWs obtained by top-down etching and processed for polytype
39
40 heterostructuration, as described in [8,9]. Let us underline that no phase transformation was
41
42 observed with other crystallographic orientations. The first investigated heterostructured
43
44 NWs, presented in section III, are Ge NWs with various diameters decreasing from 460 nm to
45
46 220 nm. Then, in section IV, we have studied Si heterostructured NWs processed with various
47
48 annealing temperature, which influences the number and size of the 2H domains. For both
49
50 kinds of NWs, their thermal conductivity is evaluated and compared with bulk and non
51
52 heterostructured NWs.
53
54
55
56
57
58
59
60

II. EXPERIMENTAL METHODOLOGY

1
2
3 The thermal conductivity measurements are performed by using SThM (Scanning
4 Thermal Microscopy) in a 3ω -method configuration [16,19] at room temperature. The
5 geometrical configuration is sketched in figure 1. The employed tip is a commercial Pd/SiN
6 thermo-resistive probe to carry out thermal images while simultaneously obtaining contact
7 mode topography images. It is made of a thin Palladium (Pd) ribbon on a $1\mu\text{m}$ thick SiN silica
8 layer. The thin Pd ribbon acts as the thermo-resistive element. The tip characteristics are
9 summed up in Table 1: resistance R_0 at room temperature, temperature coefficient α_{Tip} , length
10 L_{Tip} , width l_{Tip} , cut-off thermal frequency f_{Tip} and thermal exchange radius b . The thermal
11 exchange radius, which limits the thermal spatial resolution, is evaluated experimentally[20].
12 For each tip parameter, a range is given since these characteristics vary from one tip to
13 another.
14
15
16
17
18
19
20
21
22
23
24
25
26
27
28
29
30



31
32
33
34
35
36
37
38
39
40
41 Figure 1: Schematic view of the sample and measurement principle: the $\langle 111 \rangle$ NWs are
42 grown by top-down etching, then spin coated in HSQ resist which transforms into SiO_2 after
43 annealing. The HSQ ensures the phase transformation and the mechanical handling. Red
44 zones along the NWs represent 2H domains. No transformation could be observed for other
45 crystallographic orientations. The SThM thermoresistive tip scans the surface of the sample. It
46 generates a heat flux on top of the NWs which propagates along them.
47
48
49
50
51
52
53
54
55
56
57
58
59
60

R_0 (Ω)	α_{Tip} (K^{-1})	L_{Tip} (μm)	l_{Tip} (μm)	f_{Tip} (kHz)	b (nm)
300-400	$1-2 \times 10^{-3}$	8-10	1-2	3-5	70-300

Table 1. Pd thermoresistive tip characteristics

The tip is used in an active regime, which means that it is at the same time the heater and the sensor. Indeed, a ω pulsation sinusoidal current $I(t)$ passes through the thermoresistive probe. A heat flux P_{Joule} at pulsation 2ω is dissipated in the probe generating a temperature variation $T_{2\omega}$ at the same pulsation. The thermoresistive probe resistance is then modulated at 2ω . Finally, according to Ohm's law, the tip voltage is modulated at 3ω and its amplitude can be expressed as[16]:

$$(V_{3\omega})_{\text{Tip}} = K_{\text{ampli}} \frac{R_{\text{Tip}} \alpha_{\text{Tip}} I_0}{2} \langle T_{2\omega} \rangle \quad (1)$$

where K_{ampli} is the amplification system gain, I_0 the amplitude of the ω pulsation current supplying the probe and $\langle T_{2\omega} \rangle$ the mean temperature variation amplitude over the tip length L_{Tip} . The probe is included in a Wheatstone bridge connected to an amplification system in order to reduce the influence of the other harmonics and amplify the 3ω signal. Experimentally, a lock-in measurement of the 3ω tip voltage $(V_{3\omega})_{\text{Tip}}$ is made during each scan in contact with a sample. At the end of a scan, we assess a topographic image and a $(V_{3\omega})_{\text{Tip}}$ thermal image. We can then deduce a $\langle T_{2\omega} \rangle$ tip temperature variations map and then an equivalent tip-sample thermal resistance R_{eq} . Indeed, when the tip comes into contact with a material, a heat flow goes from the tip to the sample and this flow depends on the sample thermal conductance. Consequently, the variations of the tip temperature $\langle T_{2\omega} \rangle$ depend on the equivalent thermal resistance R_{eq} between the tip and the sample. The more conductive the sample, the lower the 2ω thermal variations. This configuration, called 3ω -SThM, is hence

1
2
3 sometimes also called conductivity contrast imaging. More details about the experimental set-
4
5 up can be found in [16].
6

7
8 In our case, the sample is made of a NW carpet and the tip contacts the NWs on top of
9
10 them (fig. 1). The heat flux then propagates along the NW. Then, modelling the thermal
11
12 exchanges between tip and sample by thermal resistances, R_{eq} can be likened to a contact
13
14 resistance R_c in serie with the tip to NW constriction resistance and the thermal resistance
15
16 R_{NW} of the NW contacted by the tip:
17
18

$$R_{eq} = R_c + R_{Tip-NW} + R_{NW} \cdot (2)$$

19
20
21
22
23
24
25
26
27 Here, we do not take into account the NW to substrate constriction resistance since it is
28
29 negligible in comparison with the other thermal resistances[6]. Concerning the tip to NW
30
31 thermal resistance, it depends on the NW diameter/thermal exchange radius ratio and must be
32
33 evaluated for each tip and each sample. The samples we analyse are classically made of NWs
34
35 embedded in a SiO_2 matrix whose thermal conductivity is known. The contact resistance R_c
36
37 depends on the tip and the sample studied but also on the atmospheric conditions. Then, a
38
39 specific procedure is necessary to evaluate R_c for each sample. It is considered constant on the
40
41 whole thermal image and can then be evaluated from the 3ω -SThM signal measured on the
42
43 SiO_2 part of the sample. Finally, the NW thermal conductivity can be deduced from the
44
45 thermal conduction in the NW by measuring the 3ω voltage on the NW section. In the case of
46
47 the samples studied here, the thermal conductivity of the NW is expected to be higher than the
48
49 one of the matrix and the substrate is a highly thermally conductive thick Si substrate which
50
51 can be considered as a semi-infinite medium behaving as a heat sink. Then, a simple 1D
52
53
54
55
56
57
58
59
60

conduction model can be applied to the thermal transport along the NW with $R_{NW} = \frac{1}{\lambda_{NW}} \frac{L}{S}$

. The thermal conductivity of the NW is then given by:

$$\lambda_{NW} = \frac{L}{S} \times \frac{1}{R_{eq} - R_{Tip-NW} - R_c} \quad (3)$$

where L and S are respectively the NW length and cross section. We have successfully applied this technique to study the thermal conductivity of organic and inorganic NWs [6,21,22].

Let us underline that, for a sample constituted of several NWs, this experimental method enables to simultaneously measure R_{eq} on each NW in the thermal image. In the following sections, the equivalent thermal resistance values are deduced from the mean value measured on 30 to 50 locations either on the matrix surface (to evaluate R_c) or on the NWs top surface (to evaluate R_{NW}). Then it enables to do a statistical data processing, hence to deduce a mean thermal conductivity and the associated standard deviation, once the value of the contact thermal resistance R_c has been determined. The uncertainty on the thermal resistances is evaluated from the standard deviation of the 3ω voltage measured on the 30 to 50 locations whereas the uncertainty on the thermal conductivity also takes into account the dispersion on the length and section of the NWs.

Let us note that the experimental set-up enables to work from atmospheric pressure to a 10^{-5} Torr vacuum. In our classical functioning conditions, the probe current amplitude is around 1mA, its frequency is of 1kHz and we work under atmospheric conditions. The acquisition time at each position depends on the lock-in amplifier time constant which itself depends on the current frequency. Typically, with a 1kHz current frequency, the acquisition time for a 256×256 points image is less than 10 minutes. The thermal exchange radius has been experimentally evaluated to 100 nm and 175 nm for the tips used respectively for Ge NWs (section III) and Si NWs (section IV).

III. THERMAL CONDUCTIVITY OF HETEROSTRUCTURED GE NANOWIRES

The first kind of sample is an ordered array of Ge NWs obtained by top-down etching in a n-type (111) Ge substrate. The <111>-NWs were achieved by combining electron beam lithography and reactive ion etching. The patterns consist of $330 \times 120 \mu\text{m}^2$ matrix defined by polygon features of 100 nm diameter and a 300 nm pitch. The deep etch of the patterned substrate was realized by reactive ion etching inductance coupled plasma RIE-ICP up to 1 μm depth. The resulting features are defined by nanopillars with steep edges and diameters ranging from 220 to 460 nm. The nanostructures were finally cleaned in hot acetone (50°C) for a few minutes to remove all residues. Various diameters of NWs are available on a unique sample by varying the electron dose, offering the possibility to investigate the effect of NW diameter on the thermal conductivity (others parameters being equal). After synthesis, Ge NWs are embedded in a hardening hydrogen silsesquioxane resist (HSQ) followed by a baking at 500°C. With this process described in [8,9], a phase transformation occurs heterogeneously along the NW length, on (115) shear bands, i.e. at 39° from the (111) surface plane. The NWs exhibit several 2H domains with a specific orientation relationship between the parent 3C phase and the 2H domains with $(110)_{3C} // (0001)_{2H}$. Figure 2 gives an example of a heterostructured Ge NWs sample.

For 3ω -SthM scanning, the surface of the sample constituted of embedded NWs in silica is planarized using a chemical mechanical polishing (CMP) process with a colloidal silica suspension.

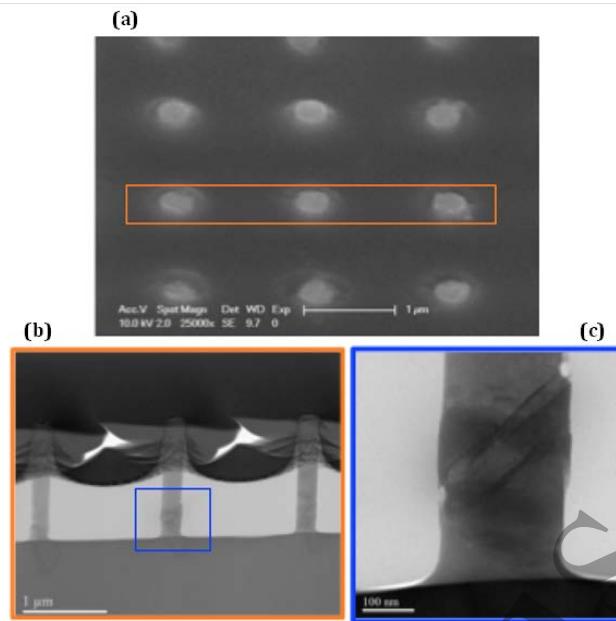


Figure 2. (a) tilted SEM image of one sample showing the nanowires embedded in the HSQ resist after surface polishing, (b) low magnification TEM view of a TEM lamellae with 3 Ge NWs. Such lamellae was obtained by etching around a row of nanowires such as illustrated by the orange box in A, (c) TEM bright field micrograph of the bottom part of the nanowire localised by the blue square in B. Scale bar in (a) and (b) is $1\mu\text{m}$. Scale bar in (c) is 100 nm .

In [11], the authors have presented theoretical investigations on the interfacial thermal conductance in polytype 3C/2H Ge interfaces. Using ABCM (adiabatic bond charge model), they studied the effects of the crystal orientation and of the main phonon modes involved in heat transfer. They conclude that such allotrope interfaces should be a promising option to reduce the thermal conductance, in particular in systems with many interfaces such as the NWs described in this paper. In addition, among the 4 different interface orientations they have studied, the lowest conductance has been obtained for the interface orientation identical to the one of our NWs. The main advantage of the sample studied in this section is the possibility to assess different diameters on the same sample. An example of 3ω -SThM

topographic and thermal images obtained NWs with 400 nm and 220 nm diameters is presented in figure 3. We can easily localize the NWs due to a different thermal contrast between the NWs and the matrix. Let us underline also a bright circle surrounding the NWs which we can explain by the fact that the NWs protrude from the matrix and therefore, when passing from the matrix towards a NW, the tip begins contacting the NW by its side and not by its end. The thermal exchange is then totally different and does not correspond to our tip thermal model anymore. Then, we will not consider this part of the NW in the 3ω voltage and hence in the thermal resistance measurements.

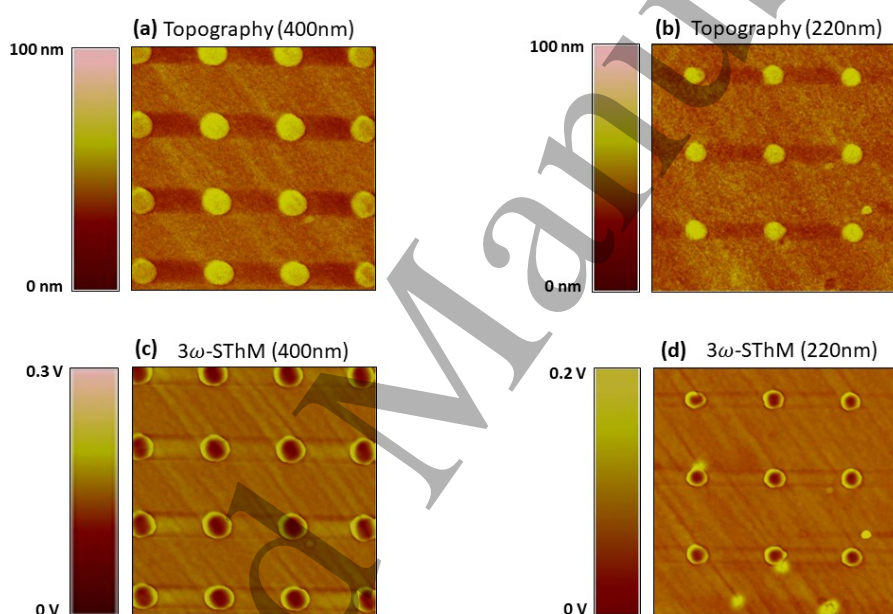


Figure 3. 3ω -SThM images ($5\mu\text{m}\times 5\mu\text{m}$) of 3C/2H Ge NWs: (a) topographical 400nm diameter image, (b) topographical 220nm diameter image, (c) 400nm diameter thermal conductivity contrast image, (d) 220nm diameter thermal conductivity contrast image.

Since the contact exchange radius has been experimentally estimated to 100nm, for each NW diameter, we can evaluate the tip to NW constriction resistance $R_{\text{Tip-NW}}$ [6]. From the 3ω -SThM thermal images, we can estimate the value of the contact resistance R_c measured on the matrix : $R_c=(0.91\pm 0.04)\times 10^6$ K/W. Then, we can deduce the NW thermal resistance R_{NW} from

the 3ω voltage measured on the whole section of the NW (excluding the bright circle part) which increases from $(1.08 \pm 0.02) \times 10^6$ K/W to $(1.69 \pm 0.04) \times 10^6$ K/W when the NW diameter decreases from 440nm to 220nm. We can finally estimate the value of the thermal conductivity for each diameter. Let us note that the standard deviation on the thermal conductivity value is low because the dispersion on the measured NW thermal resistance is low but also because the length and section of the NWs are quite homogeneous. Our experimental results are compared in figure 4 with theoretical values obtained for homogeneous 3C Ge NWs[23,24].

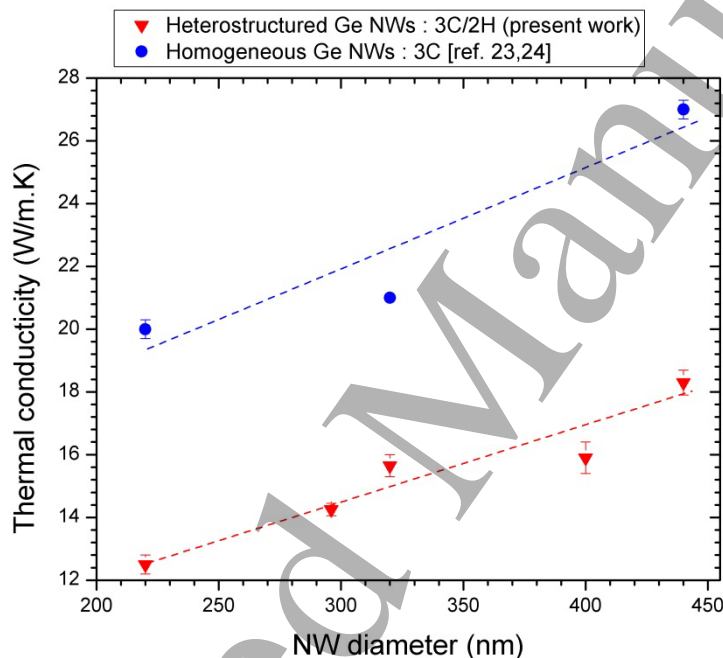


Figure 4. Thermal conductivity of 3C/2H Ge NWs as a function of diameter. The dashed lines are drawn to guide the eye.

First, the results evidence a thermal conductivity reduction in NWs compared to their counterpart Ge bulk whose thermal conductivity is 60W/m.K. Secondly, we also note a thermal conductivity reduction when reducing the diameter of the NWs for both the homogeneous and heterogeneous NWs. This behavior was well-known for homogeneous NWs [3,16,25] but we have experimentally checked that we observe the same behavior in

1
2
3 heterogeneous NWs. Finally, the comparison between both kinds of NWs clearly shows a
4
5 huge reduction of the thermal conductivity when the NWs are heterostructured, up to 66% for
6
7 the smallest ones. This reduction can be ascribed to the heterostructuration but also to other
8
9 phenomena such as roughness or porosity[23], since the homogeneous NWs reveal to present
10
11 a low roughness, which is not in favor of a thermal conductivity reduction. In heterogeneous
12
13 NWs, phase transformation locally increases the roughness induced by the shear stresses and
14
15 this effect is all the more pronounced that the NW diameter is small. That is why here, the
16
17 thermal conductivity reduction can be partly attributed to an increasing roughness when the
18
19 NW diameter is reduced.
20
21
22

23
24 Next part will hence investigate the influence of the sole heterostructuration effect.
25
26
27

28 **IV. THERMAL CONDUCTIVITY OF HETEROSTRUCTURED SI NANOWIRES**

29
30 One must note that the phase transformation process can be applied in Si NWs up to
31
32 1000°C. The number and size of the 2H domains evolve as a function of temperature. The
33
34 effect of the heterostructuration was thus studied on random top-down etched Si NWs
35
36 transformed at various temperatures. The nanowires exhibit a diameter of around 150 nm and
37
38 an initial length of 1 μm . After CMP the final measured lengths varied from 220 nm to 380
39
40 nm (see table 2).
41
42
43

44
45 In [10], Raya-Moreno et al have calculated the second and third order interatomic force
46
47 constants and resolved the Boltzmann Transport Equation to estimate the thermal
48
49 conductivity of cubic and hexagonal Si NWs and they have shown a reduction of the thermal
50
51 conductivity for hexagonal NWs by a factor around 2 depending on the NW diameter. The
52
53 reduction is expected to be more pronounced for diameters between 100 and 150nm. The
54
55 NWs presented here should then be very good candidates since they offer various advantages
56
57
58
59
60

to optimally reduce the thermal conductivity: a 150nm diameter, 2H domains and 3C/2H interfaces.

After 3 ω -SThM measurements, the samples have been analyzed by TEM to evaluate their total length (after polishing) and also the 2H domains mean length as well as the number of 2H domains. Values are reported in table 2. We also indicate the 2H length/NW length ratio which corresponds to the 2H volume fraction and a normalized number n_{2H}^* of 2H domains which corresponds to the number of 2H domains divided by the NW length ($n_{2H}^* = n_{2H}/L_{NW}$). Indeed, the number of 2H domains for the different samples cannot be compared if the NWs have different lengths, which is the case after polishing.

Annealing temperature (°C)	600	700	900	1000
L_{NW} (nm)	380	220	320	250
L_{2H} (nm)	44	46	75	68
n_{2H}	1.61	1.23	2.13	2.56
L_{2H}/L_{NW}	0.12	0.21	0.23	0.27
n_{2H}^* (μm^{-1})	4.23	5.59	6.66	10.24

Table 2. NW structural properties for each annealing temperature.

The sample processed at 500°C is not presented in this table since it presents almost no phase transformation and most of the NWs (more than 90%) are then homogeneous 3C NWs. Very few transformed NWs only exhibit 1 or 2 domains which are very thin and do not extend over the full diameter of the NWs (see images in [9]). This 500°C-sample can then be considered as a reference. For samples processes at 600°C, more than 65% of the NWs are transformed and the 2H phase involves 12% of the NW length. At 700°C, almost all the NWs are transformed. The NWs are quite short, then, if we compare with the 600°C NWs, the

1
2
3 absolute 2H length is comparable but the 2H volume fraction (L_{2H}/L_{NW}) is much higher,
4
5 passing from 0.12 to 0.21 as indicated in table 2. Similarly, the number of domains is smaller
6
7 but it increases if we consider its normalized value n^*_{2H} . Finally, for 900 and 1000°C
8
9 annealing temperatures, the 2H volume fraction slightly increases and the relative normalized
10
11 number of domains n^*_{2H} increases in a more pronounced manner (TEM images of the various
12
13 samples are given in the supplementary materials). Therefore, when increasing the annealing
14
15 temperature, the number of domains continuously increases while the relative 2H domain
16
17 length rapidly increases between 500 and 700°C but then remains quite constant for annealing
18
19 temperatures above 700°C.
20
21
22

23
24 Figure 5 presents the topographical and thermal images of one of the samples for a
25
26 700°C annealing temperature. The NWs are almost poorly visible in the topographical image
27
28 which indicates that, contrary to the Ge NWs, the Si NWs do not protrude from the matrix.
29
30 Instead, in the thermal images, the 150nm diameter NWs are clearly distinguished with a
31
32 good thermal conductivity contrast with the matrix. From the thermal images obtained for the
33
34 different samples, we could deduce the NW thermal conductivity. For these samples, the
35
36 thermal exchange radius has been experimentally evaluated to 175nm. Taking into account
37
38 this value and the 150nm NW diameter, the tip to NW constriction resistance can be neglected
39
40 in equations (2) and (3). The contact resistance has been evaluated on the matrix and the NW
41
42 thermal resistance R_{NW} was then deduced: it increases from $(0.41\pm 0.04)\times 10^6$ K/W to
43
44 $(0.98\pm 0.04)\times 10^6$ K/W when the annealing temperature increases from 500 to 1000°C.
45
46
47
48
49
50
51
52
53
54
55
56
57
58
59
60

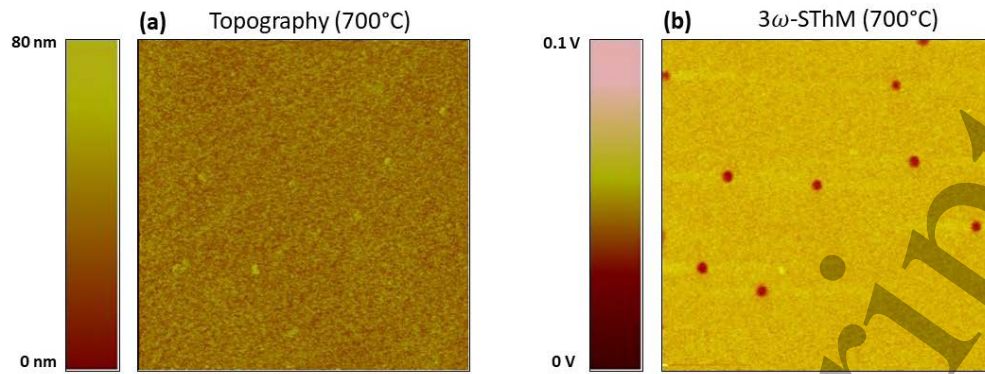


Figure 5. 3ω -SThM images ($5\mu\text{m}\times 5\mu\text{m}$) of 150nm diameter 3C/2H Si NWs: (a) topographical image, (b) thermal conductivity contrast image. These images are for a 700°C annealing temperature.

For each annealing temperature, taking account the NW length measured afterwards and presented in table 2, we present, in figure 6(a), the mean thermal conductivity evaluated on around thirty NWs. Let us note that the standard deviation on the thermal conductivity value is higher than for Ge NWs, mainly because of a higher dispersion on the length and section of the NWs. For the 500°C sample, which presents almost no phase transformation and is then considered as a reference sample, we have identified a $46\pm 4 \text{ W}\cdot\text{m}^{-1}\cdot\text{K}^{-1}$ thermal conductivity value. This value identified by 3ω -SThM is in good agreement with values obtained by simulations for 3C 150nm diameter Si NWs[24] or by experimental measurements on other NWs[26] and offers a large reduction in comparison with the $150 \text{ W}/\text{m}\cdot\text{K}$ bulk value.

Then, when the annealing temperature increases from 500 to 1000°C , we first observe a strong thermal conductivity reduction when passing from 500 to 700°C , reaching more than 60%. Now, when increasing again the annealing temperature from 700 to 1000°C , then the thermal conductivity is quite constant and its identified value is less than $20 \text{ W}/\text{m}\cdot\text{K}$. In [10], the authors have evaluated the $\lambda_{2\text{H}}/\lambda_{3\text{C}}$ ratio for Si NWs. Using the $\lambda_{3\text{C}}$ measured on the 500°C annealed sample, we can deduce the simulated $\lambda_{2\text{H}}$ value for 150nm diameter NWs around $23 \text{ W}\cdot\text{m}^{-1}\cdot\text{K}^{-1}$. It is worth noting that the thermal conductivity we have identified for the 2H/3C

samples processed at 700°C, 900°C and 1000°C is slightly lower than the theoretical value predicted for homogeneous 2H NWs.

Through heterostructuration, two phenomena can be responsible for the thermal conductivity reduction: the increasing number of thermal barriers along the NW and the 2H domain length (or volume fraction) because of the smaller thermal conductivity of 2H Si as compared to 3C Si[10]. Figure 6(a) presents the 2H volume fraction for the various annealing temperature, in addition to the mean thermal conductivity. We can observe a good correlation between the thermal conductivity and the 2H volume fraction. Indeed, between 500 and 700°C, the 2H volume fraction strongly increases while the thermal conductivity is strongly reduced but for higher annealing temperature both quantities remain quite constant. In figure 6(b) we have thus plotted $1/\lambda_{\text{NW}}$ as a function of the volume fraction. The behaviour is quite linear which highlights the correlation between both quantities.

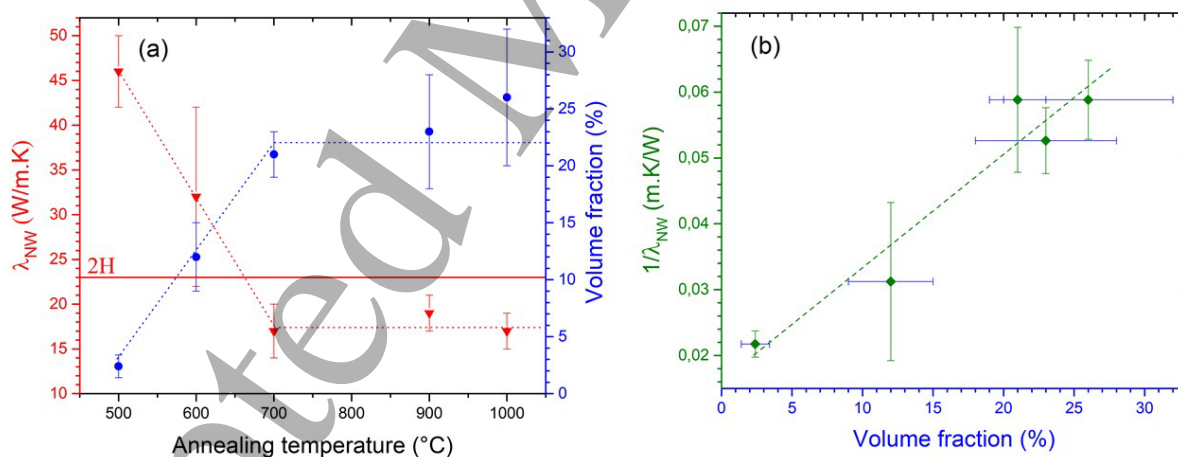


Figure 6. 3C/2H Si NWs: (a) NW thermal conductivity and volume fraction as a function of annealing temperature and (b) inverse of NW thermal conductivity as a function of volume fraction. The dashed lines are drawn to guide the eye.

As for the mean normalized number of 2H domains, it constantly increases when the annealing temperature increases as illustrated in figure 7(a). Since the NW thermal

conductivity value is quite constant for annealing temperatures above 700°C, it seems that the fragmentation of 2H domains is not a key parameter in the thermal conductivity reduction.

Figure 7(b) presents $1/\lambda_{NW}$ as a function of the mean normalized number of 2H domains and does not show any obvious correlation between these parameters.

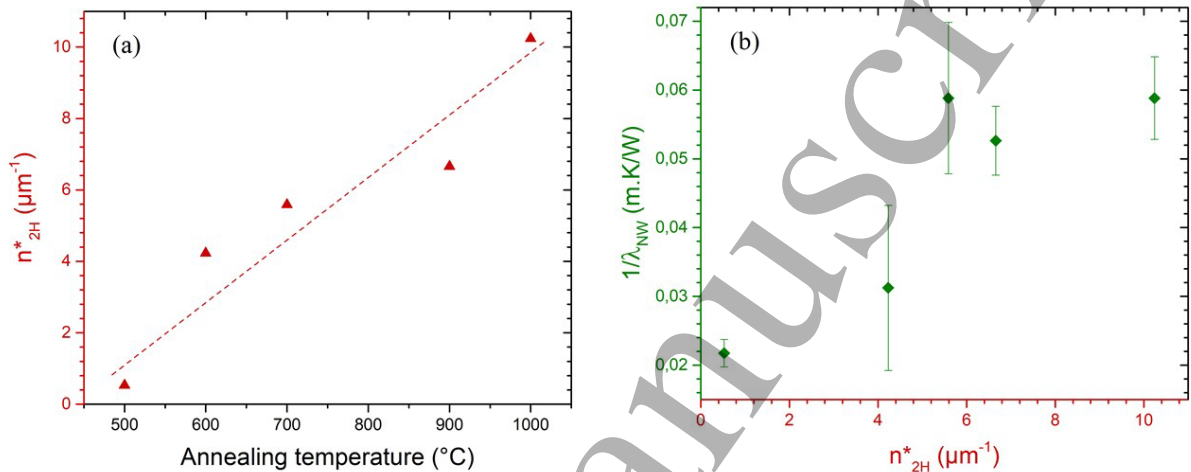


Figure 7. 3C/2H Si NWs : (a) normalized number of domains (number of 2H domains divided by the NW length) as a function of annealing temperature and (b) inverse of NW thermal conductivity as a function of normalized number of domains. The dashed line in (a) is drawn to guide the eye.

This observation leads to the conclusion that even if the number of domains (i.e. the number of thermal barriers) may be responsible for a phonon scattering, which is highlighted by the fact that we can reach a thermal conductivity lower than the 23 W/m.K value predicted for 150 nm diameter homogeneous 2H NWs, the 2H domain length is the major factor which controls the reduction of thermal conductivity related to a lower thermal conductivity of the 2H phase as estimated in [10]. The fragmentation of the 2H domains does not influence the thermal conductivity reduction as much as the 2H length.

Finally, the NW thermal resistance R_{NW} is constituted of 3 series resistances: the 2H domain thermal resistance, the 3C domain thermal resistance and the polytype interface

1
2
3 resistance. Using the 23 W/m.K 2H thermal conductivity predicted in [10] and the the λ_{3C}
4
5 measured on the 500°C annealed sample, we can hence estimate the polytype interface
6
7 conductance in the range of 150-400 MW/m².K, in good accordance with the order of
8
9 magnitude of the conductance identified in [11] by theoretical investigations.
10
11
12

13 14 15 **V. CONCLUSION**

16
17 We have experimentally demonstrated that polytype heterostructuring of NWs could
18
19 reduce their thermal conductivity. This effect has been supposedly observed in
20
21 heterostructured 2H/3C Ge NWs and confirmed in Si NWs, for which a correlation between
22
23 the fabrication process annealing temperature, which influences the number and the size of
24
25 2H domains, and the thermal conductivity reduction has been shown. As a consequence,
26
27 allotrope heterostructured NWs of group IV semiconductor seem to be very good candidates
28
29 for thermoelectric applications, especially as these inorganic materials are widely used in
30
31 electronics and can be doped. We can hence hope that doping heterostructured NWs will
32
33 enable to reduce the thermal conductivity and improve the electrical conductivity. Next steps
34
35 will therefore consist in simulating the thermal conductivity of polytype 3C/2H Ge and Si
36
37 NWs and in studying the influence of doping on the thermal conductivity but also on the
38
39 electrical parameters in order to possibly improve the figure of merit.
40
41
42
43
44
45
46

47 48 **ACKNOWLEDGMENTS**

49
50 This work was performed in the framework of the ANR HEXSIGE project (ANR-17-CE030-
51
52 0014-01) funded by the French Agence Nationale de la Recherche.

53
54 Samples were performed in micro/nano fabrication facility of C2N, which is part of the
55
56 national network Renatech of French clean rooms centers.
57
58
59
60

1
2
3 Part of this work was supported by PhD grant and funding from the LIDEX Nanodesign
4
5 platform.
6
7
8
9
10
11
12
13
14
15
16
17
18
19
20
21
22
23
24
25
26
27
28
29
30
31
32
33
34
35
36
37
38
39
40
41
42
43
44
45
46
47
48
49
50
51
52
53
54
55
56
57
58
59
60

Accepted Manuscript

References

- [1] G. Chen, M.S. Dresselhaus, G. Dresselhaus, J.-P. Fleurial and T. Caillat, *International Materials Reviews* **48**, 45 (2003).
- [2] X. Chen, Y. Wang, Y. Ma, T. Cui and G. Zou, *J. Phys. Chem C* **113**, 14001 (2009).
- [3] A.I. Hochbaum, R. Chen, R. Diaz Delgado, W. Liang, E.C. Garnett, M. Najarian, A. Majumdar, and P. Yang, *Nature* **451**, 163 (2008).
- [4] T. Zhang, s. Wu, J. Xu, R. Zheng and G. Cheng, *Nano Energy* **13**, 433 (2015).
- [5] D. Davila, A. Tarancón, D. Kendig, M. Fernández-Regúlez, N. Sabaté, M. Salleras, C. Calaza, C. Cané, I. Gràcia, E. Figueras, J. Santander, A. San Paulo, A. Shakouri and L. Fonseca, *J. Elec. Mat.* **40**, 851 (2011).
- [6] S. Grauby, E. Puyoo, J-M. Rampnoux, E. Rouvière, and S. Dilhaire, *J. Phys. Chem. C* **117**, 9025-9034 (2013).
- [7] R.E. Algra, M.A. Verheijen, L-F. Feiner, G.G.W. Immink, W.J.P. van Enckevort, E. Vlieg, and E.P.A.M. Bakkers, *Nano. Lett.* **11**, 1259-1264 (2011).
- [8] L. Vincent, G. Patriarche, G. Hallais, C. Renard, C. Gardès, D. Troadec and D. Bouchier, *Nano. Lett.* **14**, 4828-4836 (2014).
- [9] L. Vincent, D. Djomani, M. Kakhfakh, C. Renard, B. Belier, D. Bouchier and G. Patriarche, *Nanotechnology* **29**, 125601 (2018).
- [10] M. Raya-Moreno, H. Aramberri, J.A. Seijas-Bellido, X. Cartoixa, and R. Rurali, *Appl. Phys. Lett.* **111**, 032107 (2017).
- [11] J. Larroque, P. Dollfus, and J. Saint-Martin, *J. Appl. Phys.* **123**, 025702 (2018).
- [12] D. Li, Y. Wu, P. Kim, L. Shi, and P. Yang, *Appl. Phys. Lett.* **83**, 2934 (2003).
- [13] L. Shi, D. Li, C. Yu, W. Jang, D. Kim, Z. Yao, P. Kim, and A. Majumdar, *J. Heat Trans.-T ASME* **125**, 881 (2003).

- 1
2
3 [14] A.I. Boukai, Y. Bunimovich, J. Tahir-Kheli, J-K. Yu, W.A. Goddard III, and J.R.
4 Heath, *Nature* **451**, 168 (2008).
5
6
7 [15] A.I Persson, Y.K. Koh, D.G. Cahill, L. Samuelson, and H. Linke, *Nanolett.* **9**, 4484
8 (2009).
9
10
11 [16] E. Puyoo, S. Grauby, J-M. Rampnoux, E. Rouvière, and S. Dilhaire, *J. Appl. Phys.*
12 **109**, 024302 (2011).
13
14
15 [17] L. Shi, J. Zhou, P. Kim, A. Bachtold, A. Majumdar, P.L. McEuen, *J. Appl. Phys.*
16 **105**, 104306 (2009).
17
18
19 [18] M. Hinz, O. Marti, B. Gotsmann, M.A. Lantz, U. Dürig, *Appl. Phys. Lett.* **92**, 043122
20 (2008).
21
22
23 [19] S. Lefèvre, S. Volz, *Rev. Sci. Instrum.* **76**, 033701 (2005).
24
25
26 [20] E. Puyoo, S. Grauby, J-M. Rampnoux, E. Rouvière, and S. Dilhaire, *Rev. Sci.*
27 *Instrum.* **81**, 073701 (2010).
28
29
30 [21] M. Munoz Rojo, J. Martin, S. Grauby, T. Borca-Tasciuc, S. Dilhaire, and M. Martin-
31 Gonzalez, *Nanoscale* **6**, 7858 (2014).
32
33
34 [22] M. Munoz Rojo, S. Grauby, J.-M. Rampnoux, O. Caballero-Calero, M. Martin-
35 Gonzalez, and S. Dilhaire, *J. Appl. Phys.* **113**, 054308 (2013).
36
37
38 [23] P.N. Martin, Z. Aksamija, E. Pop, and U. Ravaioli, *Nano Lett.* **10**, 1120-1124 (2010).
39
40
41 [24] W. Li, and N. Mingo, *J. Appl. Phys.* **114**, 054307 (2013).
42
43
44 [25] Z. Wang, and N. Mingo, *Appl. Phys. Lett.* **97**, 101903 (2010).
45
46
47 [26] G.S. Doerk, C. Carraro, and R. Maboudian, *ACS Nano* **4**, 4908 (2010).
48
49
50
51
52
53
54
55
56
57
58
59
60

Table Captions

Table 1. Pd thermoresistive tip characteristics

Table 2. NW structural properties for each annealing temperature.

Accepted Manuscript

R_0 (Ω)	α_{Tip} (K^{-1})	L_{Tip} (μm)	l_{Tip} (μm)	f_{Tip} (kHz)	b (nm)
300-400	$1-2 \times 10^{-3}$	8-10	1-2	3-5	70-300

Table 1.

Annealing temperature (°C)	600	700	900	1000
L_{NW} (nm)	380	220	320	250
L_{2H} (nm)	44	46	75	68
n_{2H}	1.61	1.23	2.13	2.56
L_{2H}/L_{NW}	0.12	0.21	0.23	0.27
n_{2H}^* (μm^{-1})	4.23	5.59	6.66	10.24

Table 2.

Figure Captions

Figure 1. Schematic view of the sample and measurement principle: the $\langle 111 \rangle$ NWs are grown by top-down etching, then spin coated in HSQ resist which transforms into SiO_2 after annealing. The HSQ ensures the phase transformation and the mechanical handling. Red zones along the NWs represent 2H domains. No transformation could be observed for other crystallographic orientations. The SThM thermoresistive tip scans the surface of the sample. It generates a heat flux on top of the NWs which propagates along them.

Figure 2. (a) tilted SEM image of one sample showing the nanowires embedded in the HSQ resist after surface polishing, (b) low magnification TEM view of a TEM lamellae with 3 Ge NWs. Such lamellae was obtained by etching around a row of nanowires such as illustrated by the orange box in A, (c) TEM bright field micrograph of the bottom part of the nanowire localised by the blue square in B. Scale bar in (a) and (b) is $1\mu\text{m}$. Scale bar in (c) is 100 nm.

Figure 3. 3ω -SThM images ($5\mu\text{m}\times 5\mu\text{m}$) of 3C/2H Ge NWs: (a) topographical 400nm diameter image, (b) topographical 220nm diameter image, (c) 400nm diameter thermal conductivity contrast image, (d) 220nm diameter thermal conductivity contrast image.

Figure 4. Thermal conductivity of 3C/2H Ge NWs as a function of diameter. The dashed lines are drawn to guide the eye.

Figure 5. 3ω -SThM images ($5\mu\text{m}\times 5\mu\text{m}$) of 150nm diameter 3C/2H Si NWs: (a) topographical image, (b) thermal conductivity contrast image. These images are for a 700°C annealing temperature.

Figure 6. 3C/2H Si NWs: (a) NW thermal conductivity and volume fraction as a function of annealing temperature and (b) inverse of NW thermal conductivity as a function of volume fraction. The dashed lines are drawn to guide the eye.

Figure 7. 3C/2H Si NWs : (a) normalized number of domains (number of 2H domains divided by the NW length) as a function of annealing temperature and (b) inverse of NW thermal conductivity as a function of normalized number of domains. The dashed line in (a) is drawn to guide the eye.

1
2
3
4
5
6
7
8
9
10
11
12
13
14
15
16
17
18
19
20
21
22
23
24
25
26
27
28
29
30
31
32
33
34
35
36
37
38
39
40
41
42
43
44
45
46
47
48
49
50
51
52
53
54
55
56
57
58
59
60

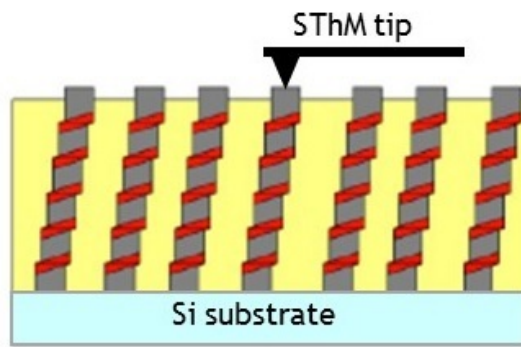


Figure 1

Accepted Manuscript

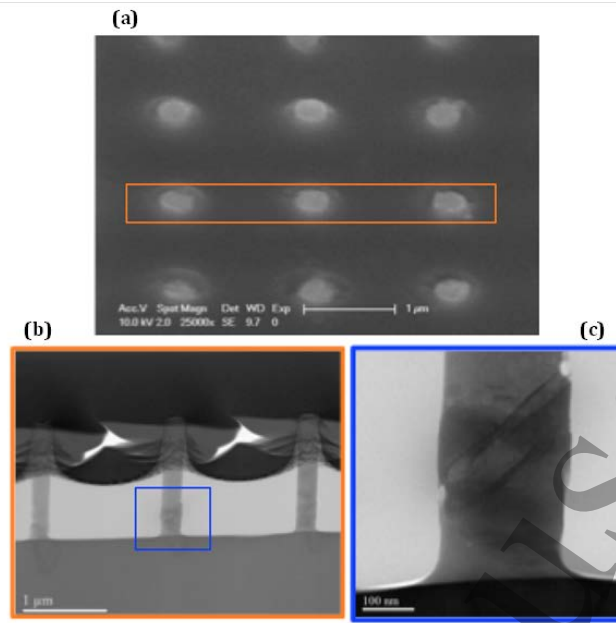


Figure 2

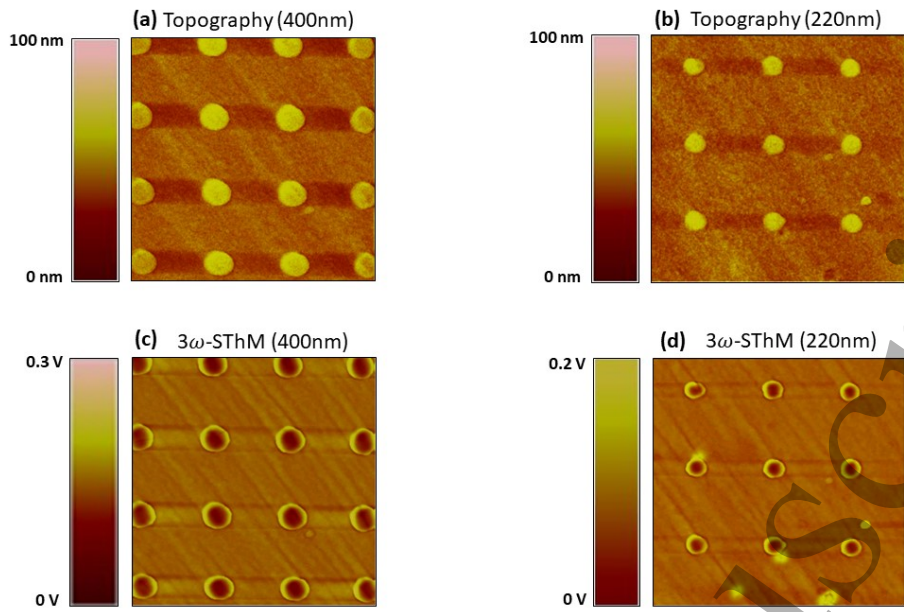


Figure 3

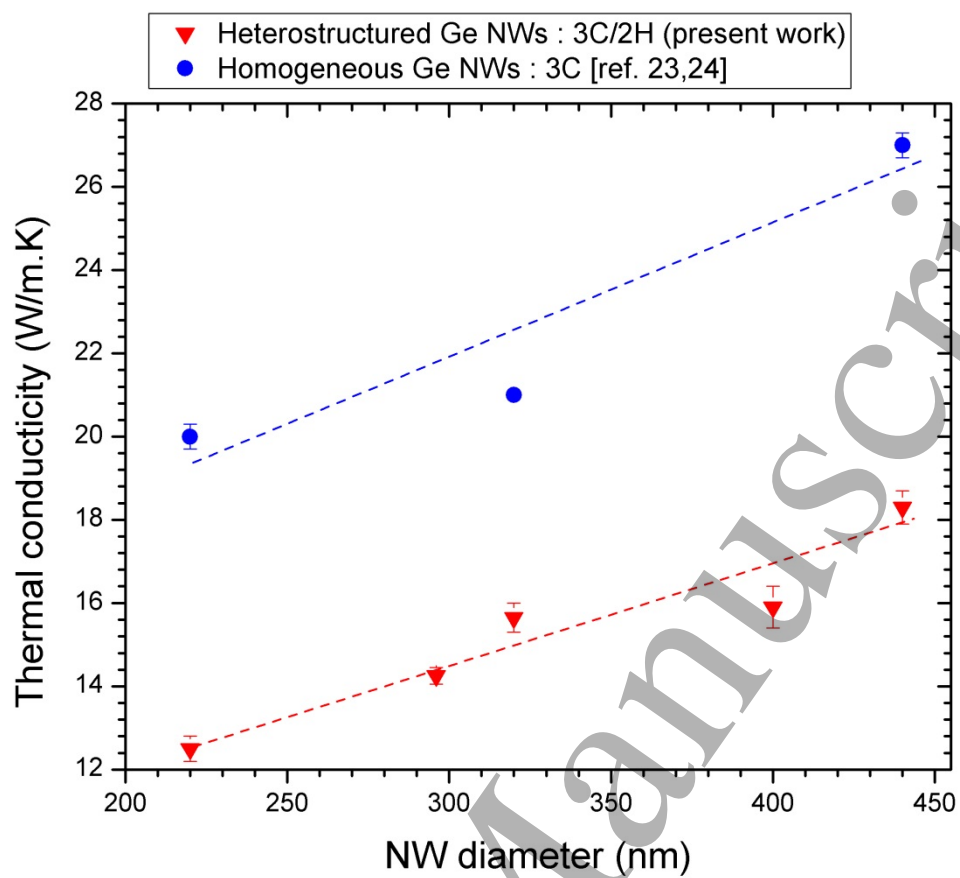


Figure 4

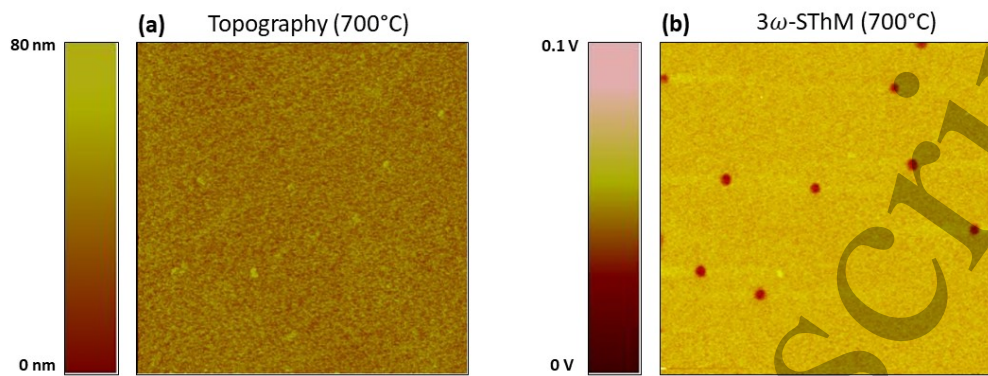


Figure 5

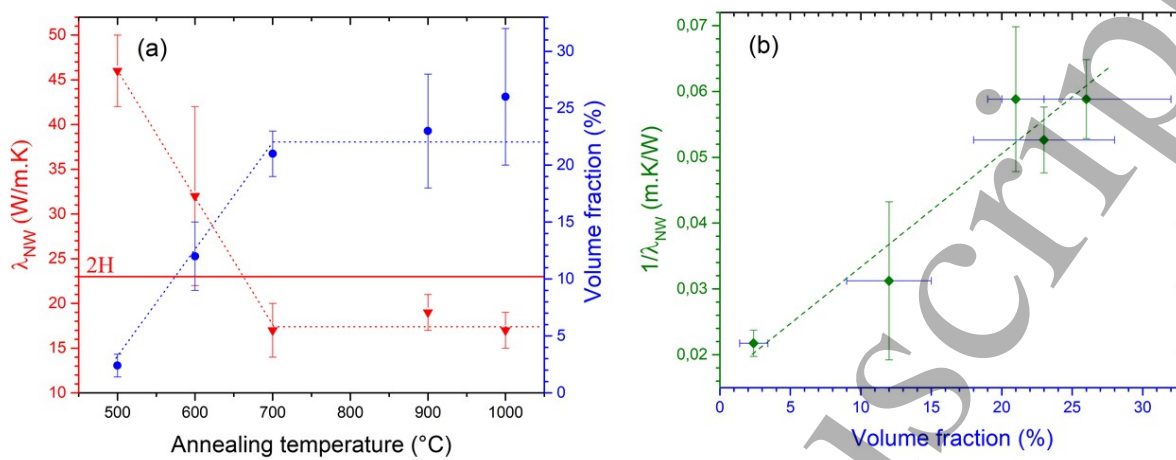


Figure 6

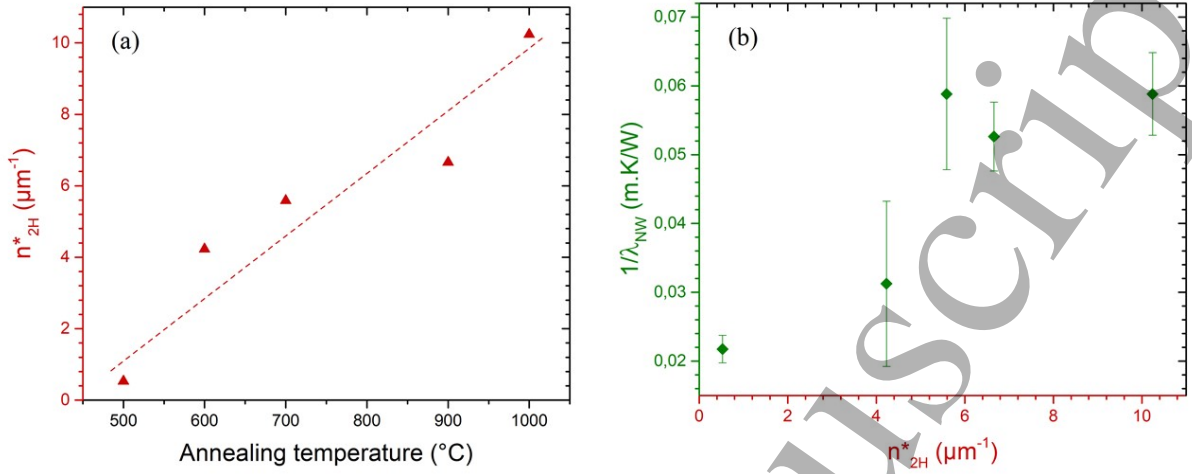


Figure 7