



**HAL**  
open science

## Hydrological risk: floods

Hannah Louise Cloke, Giuliano Di Baldassarre, Owen Landeg, Florian Pappenberger, Maria-Helena Ramos

► **To cite this version:**

Hannah Louise Cloke, Giuliano Di Baldassarre, Owen Landeg, Florian Pappenberger, Maria-Helena Ramos. Hydrological risk: floods. Science for disaster risk management 2017: knowing better and losing less. Poljanšek, K., Marín Ferrer, M., De Groeve, T., Clark, I., (Eds.), Publications Office of the European Union, pp.198-238, 2017, 10.2788/688605 . hal-02165196

**HAL Id: hal-02165196**

**<https://hal.science/hal-02165196v1>**

Submitted on 25 Jun 2019

**HAL** is a multi-disciplinary open access archive for the deposit and dissemination of scientific research documents, whether they are published or not. The documents may come from teaching and research institutions in France or abroad, or from public or private research centers.

L'archive ouverte pluridisciplinaire **HAL**, est destinée au dépôt et à la diffusion de documents scientifiques de niveau recherche, publiés ou non, émanant des établissements d'enseignement et de recherche français ou étrangers, des laboratoires publics ou privés.

## 3.4

# Hydrological risk: floods

**Hannah Cloke, Giuliano di Baldassarre, Owen Landeg,  
Florian Pappenberger, Maria-Helena Ramos**

### 3.4.1 Introduction: flood hazards and impacts

In principle, flooding is a natural phenomenon that affects all river basins around the world in more or less regular intervals and that fulfils essential functions in the natural ecosystem. However, owing to human settlements being established within floodplains and common development practices not leaving room for rivers under flood conditions, flooding is mostly considered for its negative rather than its positive effects (Watson and Adams, 2010). Alfieri et al. (2016) estimate flood impact at the European Union level to be  $\approx$ EUR 6 billion per year, affecting 250 000 people per year. Although flood impact assessment is an essential step by which to optimise flood mitigation measures, there are many sources of uncertainty that affect such complex estimates. For example, uncertainty may come from sparse and short datasets, poor

knowledge of hydraulic structures such as dams and weirs along rivers, assumptions and extrapolations in statistical analyses of extreme floods, and depth-damage functions. The estimation of flood damages also depends on several assumptions (Merz et al., 2010). It involves challenges in defining damages for different elements at risk (e.g. houses, public spaces, industries), and transferring solutions in space (from one region to another) and in time (from one flood event to another).

Flooding causes long-term damage to health, with immediate impacts such as drowning, physical trauma, infections and chemical hazards, and also affects well-being, livelihoods and social cohesion. It is also not always easy to identify the local consequences of flooding, such as the effects caused by displacement, the destruction of homes, delayed recovery and the disruption of access to health services (WHO, 2013). Flooding can also cause damage to critical infrastructure and can interrupt health and

social care service delivery and business supply chains (National Flood Resilience Review, 2016; Landeg and Lawson, 2014). Finally, flooding is also frequently associated with power outages, which themselves can have a detrimental impact on health and businesses (Klinger et al., 2014) and a knock-on effect on other critical infrastructure such as railways and wastewater services.

---

*Flood disasters affect a large number of people across the world every year, with severe social and economic impacts. Severe flooding repeatedly affects European populations, with trans-national events often being the most damaging.*

---

The vulnerability of riverside communities around the world is particularly worrying in the light of migration pressures, socioeconomic drivers and climatic change. Even those who live flood-adapted lifestyles are not resilient to severe floods that occur only rarely, particularly when the last big flood was beyond living memory (Garde-Hansen et al., 2016) and in light of the impacts of future climate change.

In this subchapter, the main drivers of flood hazard are introduced and flood hazard and risk mapping are discussed, particularly at the region-

al scale. Flood predictability is then considered, along with a review of the added value of flood monitoring, flood forecasting and EWSs.

### 3.4.2 Living with floods

Learning to live with flooding means that we recognise that flooding will continue to happen, as it is a natural phenomenon. There are many uncertainties in knowing when and where a flood will happen, both in the immediate term and in terms of probable climate change timescales, and when

it does flood there is inevitably some disruption to our lives. However, there are many things that we can do to prepare better for floods and manage the risk, including strengthening components of flood prevention, flood preparedness, flood response and flood recovery, which are part of the disaster cycle (Figure 3.). Interventions can be taken during a flood to limit the impact of the disaster, including the evacuation of settlements or the creation of additional flood relief space through the opening of dykes or dams. This response is followed by a recovery phase after the disaster has passed, which includes relief meas-

FIGURE 3.24

Hazards and risk event cycle  
Source: courtesy of authors



ures, reconstruction and event analysis. Often, this phase is aligned with the aim to achieve a similar economic standard to that before the event.

---

*Our best strategy for flood management is learning to live with flooding, that is, preparing ourselves today to be better adapted for flood risks tomorrow. The combination of a strong flood risk management policy, advanced early warning technology and increased international collaboration have the potential to reduce flood risk and improve disaster response from the local to the global scale. This requires different disciplines of knowledge, scientists, policymakers and practitioners to work closely together.*

---

If society has learned from the event, then any recovery is followed by a disaster risk-reduction phase, which includes preventive measures (e.g. creating natural retention in catchments, changing land use, rethinking urban design, planning and architectural norms, and implementing structural flood defences) and precautionary measures (e.g. supporting insurance

mechanisms, refitting buildings, training and using EWSs). The aim is to minimise the vulnerability of society and to prepare it for an adequate response and recovery after the next event. The diversity in the way societies prepare for, respond to and recover from floods is largely governed by their experience with flood risk management and the magnitude of the floods that they have historically experienced (Thieken et al., 2007).

Improving flood preparedness requires contributions from many different disciplines of knowledge. Efforts are needed in terms of (1) improving risk governance, including institutional governance, legal provisions and financial instruments for planning, prevention and crises management, (2) understanding hazard modelling, incorporating meteorological forcing, hydrological, river and urban drainage processes, (3) forecasts and predictions, from short to long lead time ranges, and (4) emergency response recovery, including coordination of local operations, assistance to affected communities and recovery of disrupted services. Communication with and engagement of the public, water managers and decision-makers is key to effectively integrate these layers and to improve flood preparedness.

### 3.4.3 Drivers of flood hazard

Floods happen for a variety of reasons, but the main drivers are usually related to high rainfall, snowmelt and high river flow conditions (see Chapter 3.6). Fluvial floods occur when

river levels rise and burst or overflow their banks, inundating the surrounding land that forms the river's floodplain. This can occur in response to storms with higher than normal rainfall totals and/or intensities, seasonal strong weather systems such as monsoons or winter stormtracks, or the sudden melting of snow in spring. The spring 2006 flood in the upper part of Elbe river basin is an example of a flood event driven by snowmelt combined with precipitation (Younis et al., 2008). With the rapid increase in temperature in April, snow that was present in the catchment was completely melted in 7-14 days. While temperature is generally easier to forecast than precipitation, the assessment of the quantities of snow accumulated in the catchment during the winter season can be a challenge for many EWSs.

---

*Floods can be triggered by rivers bursting or overflowing their banks, storm surges in the ocean, tsunamis, groundwater rising, glacial outbursts or dam failures and from surface water runoff in our cities after heavy rain.*

---

The severity of fluvial floods can be enhanced when the landscape is already saturated with water. Runoff due to rainfall cannot infiltrate the ground and, instead, flows directly to the river channel, rapidly contributing to increased river levels. This occurred in the winter 2013/14 floods

in the south of the United Kingdom, where an unusual series of storms led to widespread flooding (Huntingford et al., 2014; Muchan et al., 2015), and in the 2013 floods in Germany (Schröter et al., 2015).

Flash floods can develop when heavy rainfall occurs suddenly, particularly in mountainous river catchments, although they can occur anywhere (Gaume et al., 2009; Brauer et al., 2011). In flash floods, the rate at which river water levels rise is very rapid and the flood forms quickly. High levels of localised rainfall, rapid flood formation and high water velocities can be particularly threatening to the population at risk and highly destructive. Challenges in the management of flash floods include the short preparation time to activate flood alerts and emergency response, the sudden nature of the phenomenon, which often catches the population at risk by surprise, the difficulties of numerical weather prediction models in forecasting localised convective storms, and the lack of quantitative data at small catchment level to improve the understanding and modelling of flash floods (Collier, 2007; Leichti et al., 2013; Alfieri et al., 2011).

Heavy rainfall may cause surface water flooding, also known as pluvial flooding, particularly in cities where the urban drainage systems become overwhelmed. In these cases, event monitoring from telemetric rain gauges or meteorological radar needs to be coupled with hydrological, hydraulic and drainage system models for flood mapping (Liguori et al., 2012). Challenges remain with regard to estimating accurately rainfall displacement over an urban area, as well as

with regard to precise knowledge of the capacity of the sewer system as a result of, for instance, debris blockages, infrastructure failure (broken or cracked pipes) or a reduction of pluvial capacity (Chen et al., 2016).

Floods can also be generated by infrastructure failure (e.g. dam breaks), glacial/lake outbursts, storm surges and wave overtopping at the coast (see Chapter 3.6), and groundwater rising under very wet prolonged conditions, thereby causing waterlogging (Macdonald et al., 2012). In many cases, flooding occurs when more than one of the generating mechanisms happen concurrently, making the prediction of flood hazards and impacts even more challenging, and the probable resulting damage more severe. In addition, longer-term drivers of flood impacts are also of concern in many vulnerable areas. They include changes in land use, population and geomorphology and the impacts of a changing climate (Alfieri et al., 2015; Slater et al., 2015). These issues are not straightforward to determine because of the many uncertainties involved in using climate and socio-economic models to drive flood hazard predictions and the difficulties in their evaluation (Cloke et al., 2013; Hall et al., 2014; Hirabayashi et al., 2013; Kendon et al., 2016; Vormoor et al., 2015).

### 3.4.4 Flood hazard and risk mapping

Flood risk can be calculated from the hydrological flood hazard by including information on the exposure and vulnerability of populations and

assets. They are needed at different spatial scales, from local and national to global scales, and at different temporal scales, from upcoming days to decades. Flood risk management measures are key to flood hazard and risk mapping. Flood risk management is considered at the European level by the Floods Directive 2007/60/EC (European Commission, 2007) which directs EU Member states to adequately assess and manage their flood risk. This involves mapping the flood hazard extent, assessing the flood risk and producing flood risk management plans, which also consider the longer-term drivers of land use and climate change.

Flood hazard can be calculated by assessing the probability of any particular area being flooded. Usually, it is undertaken with respect to a particular level of flood, for example, the 0.01 Annual Exceedance Probability threshold (also commonly known as the '100-year flood' with a return period of 100 years, which is better understood as a flood that has a 1 % probability of occurring at any given location in any given year). Flood risk takes the flood hazard and combines this with information on the potential damage to society, such as vulnerability and the exposure of assets and populations in the floodplain. Approaches can be different depending on the temporal and spatial scales at which the flood hazard and risk assessment are applied, on the modelling tools and data available and on the type of flood hazard (e.g. if it is a fluvial, surface water or coastal flood).

A fully comprehensive flood risk map requires a great number of data, a series of floods events over a long peri-

od and a chain of models and assessments (Sampson et al., 2014, Dottori et al., 2016), although simpler mapping based solely on flood events or other historical information can also be useful (Boudou et al., 2015).

---

*Flood hazard and flood risk maps are required for land use planning, floodplain management, disaster response planning and financial risk planning. They can be produced at increasingly higher resolutions using flood modelling tools. Uncertainties can be taken into account by using probabilistic methods. A focus on flood hazard impacts can enhance communication to the public.*

---

For fluvial floods, a full risk mapping requires long-term series of hydrometeorological data, satellite data on the flood extent for the assimilation of spatial information, large datasets on population/asset exposure and flood protection standards (Scussolini et al., 2016), and commercially sensitive damage data from insurance companies, which are often not openly accessible. Longer timescale changes in flood risk are usually assessed through scenarios of climate change and socioeconomic development (Apel et al., 2008; Winsemius et al., 2013). These can take into account flood policies,

such as the implementation of flood protection measures, as well as the interaction of human and physical systems, such as the adaptation effect and the failed levee effect (Di Baldassarre et al., 2015; Collenteur et al., 2015).

Flood hazard maps can be produced by using hydraulic models to simulate water flow along rivers, over floodplains and in urban surface water accumulation zones. Simulations are often combined with Geographic Information System (GIS) techniques to build flood maps. This ideally requires substantial observed data for model calibration and validation. For fluvial floods, hydraulic models can use time series of historical river flows, historical rainfalls or time series of synthetic design rainfall events, in conjunction with catchment hydrology rainfall-runoff models. However, even the most sophisticated approaches have difficulty producing robust estimates of extreme events (Sampson et al., 2014), which can be problematic if these maps are the only resources used to support decision-making processes, such as urban planning. Describing flood inundation hazard and risk using probabilistic methods is therefore encouraged (Romanowicz and Beven, 2003; Pappenberger et al., 2006). For example, flood inundation hazard can be mapped from the development and set-up of flood inundation models, a sensitivity analysis using observations, the use of the multiple acceptable ('behavioural') model parameter sets to perform 'ensemble' (multiple) simulations using an uncertain synthetic design event, or an ensemble of scenarios, as input to the flood inundation models (Di Baldassarre et al., 2010). Probabilistic

methods can be used, as they assume that, whichever model is chosen, it will not perfectly represent all flood propagation and inundation processes involved. This can be very important when modelling flood inundation in changing environments, when they are subject either to strong land use changes or to climate changes.

Regional-scale fluvial flood hazard mapping has been improved by the use of satellite data assimilation and flood models to map flood inundation pathways. Global flood hazard maps can also be useful in the assessment of flood risk in a number of different applications, including (re) insurance and large-scale flood preparedness. These maps can be created using large-scale computer models of rainfall-runoff processes in river catchments and river routing. They may, however, require the use of a variety of post-processing methods to better adjust simulations to local measurements (Pappenberger et al., 2012; Ward et al., 2013; Winsemius et al., 2013; Dottori et al., 2016). At the local scale, surface water flood hazard mapping (pluvial flooding) has benefited from recent improvements to fine-scale surface water modelling, particularly in cities, on 1-metre or 2-metre grids, integrating topography, land use, urban structures and potentially also subterranean drainage and flooding impacts (Tyrna et al., 2016; Palla et al., 2016).

All numerically produced flood hazard maps, regardless of their spatial scale, require validation in order to be useful. This can be very challenging because of a lack of robust observed data. On local, regional or national scales, validation can be undertaken,

at least to some extent, on the basis of past observations of inundation extents, from satellite, ground-based observations or community-based data sources, as well as from river stage and discharge measurements from river gauges. In contrast, the accuracy of global maps is far more challenging, as globally consistent observations can rarely be obtained. Trigg et al. (2016), for instance, describe several different global flood hazard maps, which have been individually validated within a limited context. The estimates of global flood hazard obtained are compared to analyse their consistency and to provide an estimate of model uncertainty. In Africa, the agreement between the different models is relatively low (30-40 %), with major differences in magnitude and spatial extent particularly observed for deltas, arid/semi-arid zones and wetlands, which are all areas that suffer from a lack of data for validation. Such discrepancies can have significant impact: for example, the models showed a large discrepancy in the Nile delta, where approximately 95 % of the population of Egypt lives. This highlights the fact that any global flood hazard map should be used with caution and that multimodel products may be useful (Trigg et al., 2016). The role of databases and post-event analyses is key to improve our understanding of global flood hazard and risk (de Moel et al., 2015).

### 3.4.5 Flood monitoring, forecasting and early warning systems

The predictability of hydrological

systems varies because of the large number of non-linearities in these systems, the challenges in the observability of the state of the hydrological variables, the presence of outliers (rare occurrences), the variability of external forcing and the numerous interactions among processes across scales (Bloschl and Zehe, 2005; Kumar et al., 2011; Peña et al., 2015; Lavers et al., 2011). Different types of floods are predictable with different time ranges. Flash floods driven by convective rainfall are notoriously challenging to predict ahead in time to produce effective early warnings (Collier, 2007; Berenguer et al., 2005), whereas slower developing floods in large catchments can be predicted several days ahead of time with the use of probabilistic flood forecasting systems (Emerton et al., 2016). The use of satellites and EWSs based on computer-intensive forecasts has recently enabled distinct improvements in our ability to provide effective information on the likelihood and severity of upcoming flooding and the extent of the affected area (Alfieri et al., 2013; Revilla-Romero et al., 2015). This information can be provided to agencies, responders, stakeholders and the public in various forms, including interactive watch or warning maps and flood guidance statements (e.g. FFC, n.d.; Vigicrues, 2017).

However, there is substantial uncertainty in predicting floods, which stems from the uncertainty in the atmosphere, the complexity of the land-surface processes and the imperfection in the computer models used to represent them (Cloke and Pappenberger, 2009; Rodríguez-Rincón et al., 2015). Ensemble techniques can be used to represent the main

sources of predictive uncertainty. These use multiple simulations based on different model set-ups, model parameters, initial conditions, data, etc. Rather than just providing one 'best guess' prediction, ensembles provide a whole range of model realisations and equally possible predictions for the future. Information can be obtained on which scenarios are most likely to happen and on the worst possible scenario (given our current knowledge of initial conditions and process representation). This can be useful to communicate forecast uncertainty and to help stakeholders to take more informed decisions (Cloke and Pappenberger, 2009; Stephens and Cloke, 2014; Zsótér et al., 2016). The HEPEX initiative (Hydrologic Ensemble Prediction Experiment, n.d.) seeks to advance the science and practice of hydrologic ensemble prediction and its use in risk-based decision-making by engaging researchers, forecasts and users in several community activities.

Real-time monitoring and rapid mapping of floods based on satellite data have been implemented at a variety of scales and by a number of different actors to detect flooding severity and extent in affected areas. For instance, the Copernicus Emergency Management Service—Mapping (2017) integrates satellite remote sensing and available in situ data to provide stakeholders with timely and accurate geospatial information in emergency situations and humanitarian crises (not just for floods, but also other hazards). It operates for the full emergency management cycle and can be broadly divided into (1) a Rapid Mapping component, which provides on-demand information within

hours or days, usually immediately in response to a disaster event, and (2) a risk and recovery mapping to support activities in the area of prevention, preparedness and disaster risk reduction. Another activity in the area of monitoring flooding from space and their impacts is the Dartmouth Flood Observatory (n.d.). Maps are published to provide an overview of flooding impact and extent, and a day-to-day record of flooding occurrences is built for analyses at a later stage. The use of space-based information facilitates international flood detection, response, future risk assessment, and community-wide hydrological research. Improvements in rainfall data assimilation to meteorological models (e.g. Ballard et al., 2016) and soil moisture, discharge and water level data or flood inundation characteristics to flood models (e.g. Garcia-Pintado et al., 2015; Alvarez-Garreton et al., 2015) have also provided improvements in flood forecasting and hazard mapping. Many other vital data have emerged, derived from ground-based imagery flood monitoring, crowdsourcing, unmanned aerial vehicles, rapid flood mapping and post-event data collection by authorities, researchers and local communities (e.g. Walker et al., 2016; Le Coz et al., 2016; Perks et al., 2016).

Numerical weather prediction models have now improved to the point that operational centres can set up hydrometeorological systems that are able to forecast river flow and flooding on larger catchments several days, and even weeks, ahead of an upcoming flood event at global scales (Emerton et al., 2016). Transnational forecasting and warning systems can be of particular benefit, as they provide con-

sistent and comparable information for rivers that cross national boundaries. They can also be useful as support information for all nations that do not have adequate flood forecasting and warning capabilities (Alferi et al., 2012; Thiemig et al., 2015). As Emerton et al. (2016) argue:

---

*Flood forecasting and EWSs are identified as key preparedness actions for flood risk management and can be implemented at local scales through to continental and global scales. Radar and numerical weather forecasting systems can be used as inputs to flood forecasts, but uncertainties should be taken into account using ensemble (probabilistic) forecasting techniques.*

---

Operational systems currently have the capability to produce coarse-scale discharge forecasts in the medium-range and disseminate forecasts and, in some cases, early warning products in real time across the globe, in support of national forecasting capabilities. With improvements in seasonal weather forecasting, future advances may include more seamless hydrological forecasting at the global scale alongside a move towards multi-model forecasts and grand ensemble techniques, responding to the

requirement of developing multi-hazard EWSs for disaster risk reduction. Flood magnitude and return period (or average frequency of occurrence) can be assessed for single points on a river. However, for those applications that require a measure of flood severity across an entire region, or ‘floodiness’, as, for example, in the case of initiating and forecasting the need for humanitarian actions, floodiness indices can be used to provide a spatial view of the risk of flooding (Stephens et al., 2015). Although several applications still rely on rainfall forecasts as a proxy for imminent flood hazard, Stephens et al. (op. cit.) have shown that monthly floodiness is not well correlated with precipitation, which demonstrates the need for hydrometeorological EWSs at such scales.

### 3.4.6 Copernicus Emergency Management Service: floods (EFAS and GloFAS)

The European Flood Awareness System (EFAS, 2016; operational since 2012) and GloFAS (GloFAS, 2017; due to become operational in early 2017) aim to provide early flood information to national authorities to support national capabilities, particularly with earlier and probabilistic information. EFAS additionally provides information to the European Commission’s ERCC to support flood disaster response.

The EFAS project was initiated following the severe 2002 flooding that took place across Europe and has



since been enhanced with research developments and user feedback. Large-scale systems not only save lives by increasing flood preparedness, but also have a significant economic benefit. Pappenberger et al. (2015) provide evidence of the monetary benefit in cross-border continental-scale flood EWSs. The potential monetary benefit of EFAS was estimated by com-

binning warning information with existing flood damage cost information and calculations of potential avoided flood damages. The benefits were estimated to be of the order of EUR 400 for every euro invested (Pappenberger et al., 2015).

The benefits of an EWS can also be demonstrated in individual cases of

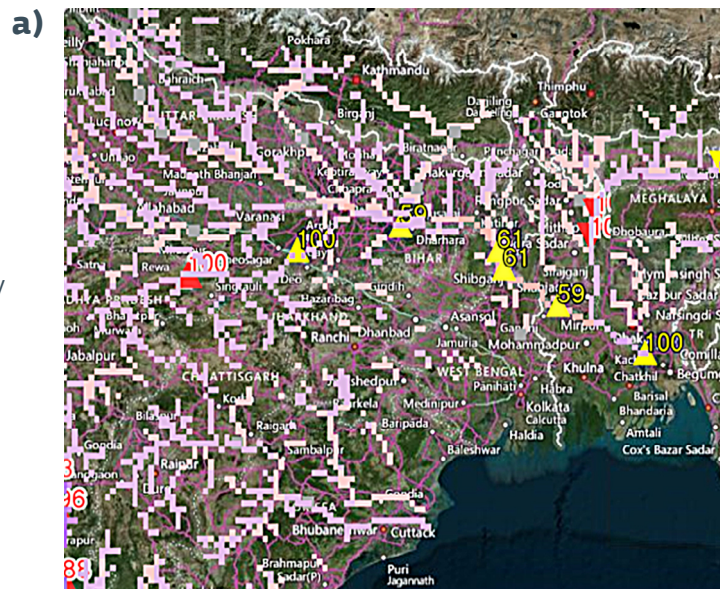
flood warning. For example, EFAS proved to be useful in the widespread flooding that occurred in the Balkans region in south-eastern Europe in 2014. Weeks of continuous rain, combined with an exceptional storm on 13 May, led to heavy flooding in Bosnia-Herzegovina and Serbia, but also in Slovakia, southern Poland and the Czech Republic. The impact

FIGURE 3.25

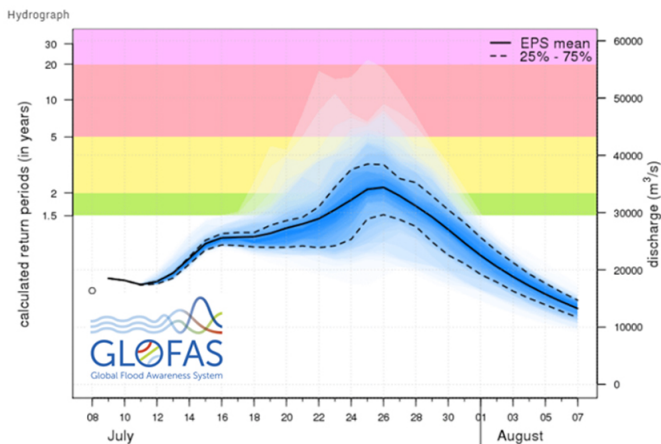
GloFAS forecasts of the River Ganges floods in July/August 2016.

- a) forecast map showing river pixels with upcoming floods;
  - b) forecast ensemble hydrograph for the Ganges at Begusarai (Bihar) on 8 July 2016; 1 week before the flooding started and 18 days before the peak;
  - c) forecast ensemble hydrography on 21 July 2016, showing the flood peak on 27 July with 98% probability of exceeding the severe alert threshold (20 year return period) and 50% probability of exceeding the 50-year return period.
- The colours of the triangles and pixels in (a) and shading in (b,c) are: purple represents severe alert of  $\geq 20$  year return period; red, high alert of  $\geq 5$  year return period; yellow, medium alert of  $\geq 2$  year return period.

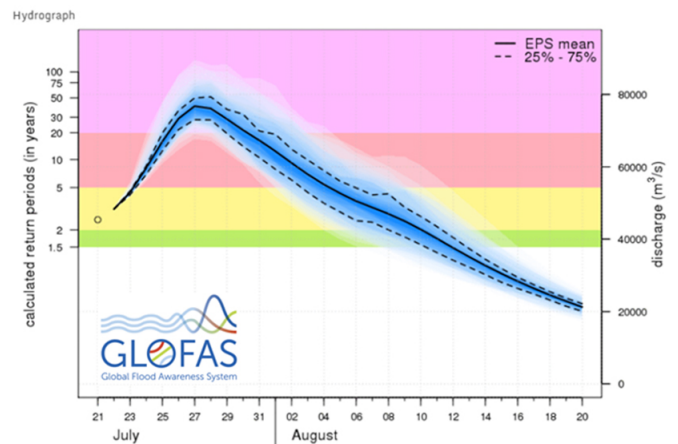
Source: GloFAS (2017)



b)



c)



of flooding was so severe that Bosnia-Herzegovina and Serbia requested assistance from the European Union through the EU Community Civil Protection Mechanism. EFAS provided early warnings from 11 May onwards and notified national authorities and the ERCC operating within the Commission's Directorate-General for Humanitarian Aid and Civil Protection (DG ECHO). This facilitated a coherent European disaster response during the numerous emergencies.

---

*There is likely to be a substantial monetary benefit in cross-border continental-scale flood EWSs. In Europe, transnational flood early warning is undertaken by the Copernicus Emergency Management Service: Floods, which consists of the European Flood Awareness System (EFAS) and its global twin system, the Global Flood Awareness System (GloFAS).*

---

Similar examples can be provided for GloFAS. In August 2016, flooding occurred along the Ganges River in India. According to India's Central Water Commission, the Ganges in the Patna district was just 8 cm below the highest recorded water level, which forced thousands to flee their homes

into relief camps. GloFAS was able to provide flood forecast information several weeks in advance (Figure 3.25). However, it is also clear that significant training is still required in order for such forecasts to be useful and to enable decisions from probabilistic information (Pagano et al., 2014). Training needs to be provided within the relevant context of international, regional and local organisations. For example, GloFAS has provided training through the RIMES (Regional Integrated Multi-Hazard Early Warning System) and UN-ESCAP (United Nations — Economic and Social Commission for Asia and Pacific), with participants from national hydrometeorological services in Bangladesh, Bhutan, Nepal, India, China and Pakistan (via the internet) and representatives from several international organisations.

In a recent case study in Uganda, Coughlan de Perez et al. (2016) have shown that global systems combined with local expertise and knowledge have the potential to assist in reducing flood disaster impacts by triggering preventative action before flooding. The system for forecast-based financing automatically triggers action when a flood forecast arrives and before a potential disaster. While not a perfect indicator of flooding, GloFAS forecasts proved to be reliable in forecasting a specific chance of flooding (exceedance of a pre-defined danger level) and was useful as an EWS.

### 3.4.7 Communicating uncertainty and decision making

Decisions are taken at different stages in the production of a forecast, as well as after its public release (e.g. as a flood warning, often based on expert judgement). Human expertise is in constant interaction with automated tasks in flood forecasting (Pagano et al., 2016) and controls much of the output information of a flood forecasting system. Training and reforecasting of critical events increases the capacity to deal with uncertainty information and enables optimal decisions to be made (Ramos et al., 2013; Crochemore et al., 2016; Arnal et al., 2016). Risk-based decision-support frameworks have to be tailored to the problem in question but also flexible to allow different flooding situations and, often, unprecedented flood events, to be handled (Dale et al., 2014). Challenges at present include providing tailored warnings that are acted upon by responders and the public (Demeritt et al., 2013; Dittrich et al., 2016), and developing decision-support systems that can integrate the different stages of flood risk management, without losing information on uncertainty, warning time, forecast accuracy and reliability. This should help decision-makers to understand the strengths and weaknesses of a forecasting system for different scales and events.

Similarly, flood hazard and risk mapping also involves many layers of data collection and modelling output display. It is crucial that communication

is ensured at all stages and that essential information for decision-making is not lost (see Chapter 4). Communication not only targets decision-makers at public or private companies, but also involves communication to the public and to experts (Environment Agency, 2015) who may prefer information to be described in terms of possible impacts. The visualisation of model outputs and maps is part of the communication process (Pappenberger et al., 2013). Usually, communication will cover information on alerts, watches and warnings, risk maps and vulnerable areas that can be potentially affected by floods of different magnitudes and return periods (100-year flood, 10-year flood, etc.), but also guidance on using and interpreting maps. It is important that communication follows Open Geospatial Consortium (OGC) standards, such as providing information as Web Mapping Services (WMS) or WaterML, so that it can be easily integrated into other systems and be more effective. The communication of flood hazard and risk and the associated uncertainties should be a strong focus at all stages in the prevention, preparedness, response and recovery cycle. It should also be active during recovery in order to facilitate post-event surveys, to speed up recovery with the help of local communities or to convey lessons learned (Marchi et al., 2009; Stephens and Cloke, 2014; Javelle et al., 2014).

Efficient communication is also dependent on how users perceive risk and understand uncertainty, and tend to act in the face of uncertain information (Ramos et al., 2010; Bubeck et al., 2012). A two-way approach can enhance, and even modify, established

links between modelling outputs (hazard and risk maps) and social actions. Through an increased understanding of user needs and institutional and social vulnerability drivers (Rufat et al., 2015, Daupras et al., 2015), existing bottlenecks in flood response, such as areas of difficult access or with high rates of injuries and fatalities, can be detected and targeted in the maps. With time, behaviour changes can even bring modifications to the vulnerability zones and can modify flood risk maps that cross flood vulnerability with hazard. In this process, building trust and confidence is essential. Uncertainties are not necessarily unwelcome by the public and stakeholders (McCarthy et al., 2007), and explicitly acknowledging uncertainty in flood risk mapping is also valuable for decision-makers (Michaels, 2015). The communication of uncertainty can help modellers and forecasters by strengthening a relationship of confidence between them and the users of their products.

---

*Flood forecasts and flood risk maps have associated uncertainties and are useful if decision-makers can understand and act upon the information provided, so forecasting and mapping must be in harmony with user needs and requirements to bring added value to the whole process of flood hazard and risk management.*

---

One uncertainty that it is essential to consider in all aspects of flood risk management is the projected future changes in flooding risks to communities, businesses and infrastructure. This means considering adaptive management approaches in the design of flood risk management policy and infrastructure (Gersonius et al., 2013). The degree of uncertainty in the impacts of climate change projections requires the consideration of flexible adaptation pathways. Regardless of the sources of uncertainties, more needs to be done in flood risk management policy and practice to make our societies resilient to future flood risk (CCC, 2017; EEA, 2017).

### 3.4.8 Conclusions and key messages

Flood disasters affect a large number of people across the world every year, with severe social and economic impacts. Severe flooding repeatedly affects European populations, with trans-national events often being the most damaging.

#### Partnership

Our best strategy for flood management is to learn to live with flooding, that is, to prepare ourselves today to be better adapted for flood risks tomorrow. The combination of strong flood management policy, advanced early warning technology and increased international collaboration has the potential to reduce flood risk and improve disaster response from the local to the global scale. This requires stakeholders from different disciplines, scientists, policymakers

and practitioners to work closely together in partnership.

added value to the whole process of flood hazard and risk management.

### **Knowledge**

Flood hazard and flood risk maps are required for land use planning, floodplain management, disaster response planning and financial risk planning. They can be produced at increasingly high resolution for fluvial and surface water flooding (and coastal flooding) using flood modelling tools. Uncertainties can be taken into account by using probabilistic methods. A focus on flood hazard impacts can enhance communication to the public.

### **Innovation**

Flood forecasting and EWSs are innovations that are key preparedness actions for flood risk management and can be implemented at local scales through to continental and global scales. Radar and numerical weather forecasting systems can be used as inputs to flood forecasts, but uncertainties should be taken into account using ensemble (probabilistic) forecasting techniques.

There is probably a substantial monetary benefit in cross-border continental-scale flood EWSs. In Europe, transnational flood early warning is undertaken by the Copernicus Emergency Management Service: Floods, which consists of EFAS and its global twin system, GloFAS.

Flood forecasts and flood risk maps have associated uncertainties and are useful if decision-makers can understand and act upon the information provided, so forecasting and mapping must be undertaken in harmony with user needs and requirements to bring

## REFERENCES CHAPTER 3 - SECTION II

### 3.4 Hydrological risk: floods

- Alfieri, L., Feyen, L., Salamon, P., Thielen, J., Bianchi, A., Dottori, F., Burek, P. (2016) Modelling the socioeconomic impact of river floods in Europe. *Natural Hazards and Earth System Sciences* 16, 1401–1411.
- Alfieri, L., Burek, P., Dutra, E., Krzeminski, B., Muraro, D., Thielen, J., Pappenberger, F., 2013. GloFAS — global ensemble streamflow forecasting and flood early warning. *Hydrology and Earth System Sciences* 17, 1161–1175.
- Alfieri, L., Burek, P., Feyen, L., Forzieri, G., 2015. Global warming increases the frequency of river floods in Europe. *Hydrology and Earth System Sciences* 19, 2247–2260.
- Alfieri, L., Salamon, P., Pappenberger, F., Wetterhall, F., Thielen, J. (2012) Operational early warning systems for water-related hazards in Europe. *Environmental Science and Policy* 21, 35–49.
- Alfieri, L., Velasco, D., Thielen, J., (2011). Flash flood detection through a multi-stage probabilistic warning system for heavy precipitation events. *Advances in Geosciences* 29, 69–75.
- Alvarez-Garretón, C., Ryu, D., Western, A., W., Su, C.-H., Crow, W. T., Robertson, D. E., Leahy, C. 2015. Improving operational flood ensemble prediction by the assimilation of satellite soil moisture: comparison between lumped and semi-distributed schemes. *Hydrology and Earth System Sciences* 19, 1659–1676.
- Apel, H., Aronica G.T., Kreibich H., Thielen, H.A., 2008. Flood risk analyses—How detailed do we need to be?. *Natural Hazards* 49 (1), 79–98.
- Arnal, L., Ramos, M.H., Coughlan, E., Cloke, H.L., Stephens, E., Wetterhall, F., Andel, S.J., F. Pappenberger undefined, 2016. Willingness-to-pay for a probabilistic flood forecast: a risk-based decision-making game. *Hydrology and Earth System Sciences* 20, 3109–3128.
- Ballard, S.P., Li, Z., Simonin, D. and Caron, J.F., 2016. Performance of 4D-Var NWP-based nowcasting of precipitation at the Met Office for summer 2012. *Quarterly Journal of the Royal Meteorological Society* 142, 472–487.
- Berenguer M., Corral C., Sánchez Diezma, R., Sempere Torres, D., 2005. Hydrological validation of a radar-based nowcasting technique. *Journal of Hydrometeorology* 6, 532–549.
- Blöschl, G., Zehe, E., 2005. On hydrological predictability. *Hydrological Processes* 19, 3923–3929.
- Boudou, M., Danière B., Lang M., 2016. Assessing changes in urban flood vulnerability through mapping land use from historical information. *Hydrology and Earth System Sciences* 20, 161–173.
- Brauer, C.C., Teuling, A.J., Overeem, A., Velde, Y., Hazenberg P., Warmerdam, P.M.M., Uijlenhoet, R., 2011. Anatomy of extraordinary rainfall and flash flood in a Dutch lowland catchment. *Hydrology and Earth System Sciences* 15, 1991–2005.
- Bubeck, P., Botzen, W.J.W., Aerts, H J.C.J., 2012. A Review of Risk Perceptions and Other Factors that Influence Flood. *Mitigation Behavior. Risk Analysis* 32, 1481–1495.
- CCC, 2017. Adaptation sub committee of the Committee on Climate Change, UK. [www.theccc.org.uk](http://www.theccc.org.uk)
- Chen, A.S., Leandro, J., Djordjevic, S., 2016. Modelling sewer discharge via displacement of manhole covers during flood events using 1D/2D SIPSON/P-DWave dual drainage simulations. *Urban Water Journal* 13(8), 830–840.
- Cloke, H.L., Pappenberger, F., 2009. Ensemble flood forecasting: a review. *Journal of Hydrology* 375, 3–4.
- Cloke, H.L., Wetterhall F., He Y., Freer J.E., Pappenberger, F. undefined, 2013. Modelling climate impact on floods with ensemble climate projections. *Quarterly Journal of the Royal Meteorological Society* 139 (671 part B), pp. 282–297.
- Cole, S.J., Moore, R.J., Aldridge, T.A., Gunawan, O., Balmforth, H., Hunter, N., Mooney, J., Lee, D., Fenwick, K., Price, D., Demeritt, D., 2016. Natural Hazards Partnership Surface Water Flooding Hazard Impact Model: Phase 2 Final Report.
- Collenteur, R.A., Moel H., Jongman, B., Di Baldassarre, G., 2015. The failed-levee effect : Do societies learn from flood disasters ? *Natural Hazards* 76 (1), 373–388.
- Collier, C.G., 2007. Flash flood forecasting: What are the limits of predictability?. *Quarterly Journal of the Royal Meteorological Society* 133, 3–23.
- Copernicus Emergency Management Service—Mapping, 2017. <http://emergency.copernicus.eu/mapping>, [accessed 24 April, 2017].
- Coughlan de Perez, E., van den Hurk, B., van Aalst, M. K., Amuron, I., Bamanya, D., Hauser, T., Jongma, B., Lopez, A., Mason, S., Mendler de Suarez, J., Pappenberger, F., Rueth, A., Stephens, E., Suarez, P., Wagemaker, J., Zsoter, E., 2016. Action-based flood forecasting for triggering humanitarian action. *Hydrology and Earth System Sciences* 20, 3549–3560.
- Crochemore, L., Ramos, M., Pappenberger, F., Andel, S., Wood, A., 2016. An experiment on risk-based decision-making in water management using monthly probabilistic forecasts. *Bulletin of the American Meteorological Society* 97 (4), 541–551.
- Dale, M., Wicks, J., Mylne, K. Pappenberger, F., Laeger, S., Taylor, S., 2014. Probabilistic flood forecasting and decision-making: An innovative risk-based approach. *Natural Hazards* 70(1), 159–172.
- Dartmouth Flood Observatory. <http://www.dartmouth.edu/~floods/>, [accessed 24 April, 2017].
- Daupras, F., Antoine, J. M., Becerra, S., Peltier, A., 2015. Analysis of the robustness of the French flood warning system: a study based on the 2009 flood of the Garonne River. *Natural Hazards* 75(1), 215–241.
- de Moel, H., Jongman, B., Kreibich, H., Merz, B., Penning Rowsell, E., Ward, P., 2015. Flood risk assessments at difference spatial scapes. *Mitigation and Adaptation Strategies for Global Change* 20(6) 865–890.
- Demeritt, D., Nobert, S., Cloke, H.L., Pappenberger, F., 2013. The European Flood Alert System and the communication, perception, and use of ensemble predictions for operational flood risk management. *Hydrological Processes* 27(1), 147–157.
- Di Baldassarre, G., Viglione, A., Carr, G., Kuil, L., Yan, K., Brandimarte, L., Blöschl, G., 2015. Debates—Perspectives on socio-hydrology: Capturing feedbacks between physical and social processes. *Water Resources Research* 51, 4770–4781.
- Dittrich, R., Wreford, A., Butler, A., Moran, D., 2016. The impact of flood action groups on the uptake of flood management measures. *Climatic Change* 138(3), 471–489.

- Dottori, F., Salamon, P., Bianchi, A., Alfieri, L., Hirpa, F.A., Feyen, L., 2016. Development and evaluation of a framework for global flood hazard mapping. *Advances in Water Resources* 94, 87-102.
- EEA, 2017. Climate change adaptation and disaster risk reduction in Europe — Synergies for the knowledge base and policies, forthcoming
- EFAS, 2016. European Flood Awareness System (EFAS). European Commission Joint Research Centre. <https://www.efas.eu/>, [accessed 16 April, 2017].
- Emerton, R.E., Stephens, E. M., Pappenberger, F., Pagano, T. C., Weerts, A.H., Wood, A.W., Salamon, P., Brown, J. D., Hjerdt, N., Donnelly, C., Baugh, C., Cloke, H.L., 2016. Continental and global scale flood forecasting systems. *Wiley Interdisciplinary Reviews: Water* 3 (3), 391-418.
- Environment Agency, 2015. Public dialogues on flood risk communication. Final Report — SC120010/R1. Environment Agency, Bristol, UK.
- European Commission, 2007. Directive 2007/60/EC of the European Parliament and of the Council of 23 October 2007 on the assessment and management of flood risks. *Official Journal of the European Union*, L 288/27, 6.11.2007, 27–34.
- FFC, n.d. Flood forecasting centre. <http://www.ffc-environment-agency.metoffice.gov.uk/>, [accessed 16 April, 2017].
- Garcia Pintado, J., Mason, D., Dance, S. L., Cloke, H., Neal, J. C., Freer, J., Bates, P. D., 2015. Satellite-supported flood forecasting in river networks: a real case study. *Journal of Hydrology* 523, 706-724.
- Garde Hansen, J., McEwen, L., Holmes, A., Jones, O. 2016. Sustainable flood memory: Remembering as resilience. *Memory Studies*, 1-22.
- Gaume, E., Bain, V., Bernardara, P., Newinger, O., Barbuc, M., Bateman, A., Blaskovicová, L., Blöschl, G., Borga, M., Dumitrescu, A., Daliakopoulos, I., Garcia, J., Irimescu, A., Kohnova, S., Koutroulis, A., Marchi, L., Matreata, S., Medina, V., Preciso, E., Sempere Torres, D., Stancalie, G., Szolgay, J., Tsanis, I., Velasco, D., Viglione, A., 2009. A compilation of data on European flash floods, *Journal of Hydrology* 367(1-2), 70-78.
- Gersonius, B., Ashley, R., Pathirana, A., Zevenbergen, C., 2013. Climate change uncertainty: building flexibility into water and flood risk infrastructure. *Climatic Change* 116(2), 411-423.
- GloFAS, 2017. Emergency Management Service - Global Flood Awareness System. European Commission Copernicus. [www.global-floods.eu](http://www.global-floods.eu), [accessed 16 April, 2017].
- Hall, J., Arheimer, B., Borga, M., Brazdil, R., Claps, P., Kiss, A., Kjeldsen, T.R., Kriauciuniene, J., Kundzewicz, Z.W., Lang, M., Llasat, M.C., Macdonald, N., McIntyre, N., Mediero, L., Merz, B., Merz, R., Molnar, P., Montanari, A., Neuhold, C., Parajka, J., Perdigao, R.A.P., Plavcova, L., Rogger, M., Salinas, J.L., Sauquet, E., Schaer, C., Szolgay, J., Viglione, A., Bloeschl, G., 2014. Understanding flood regime changes in Europe: a state-of-the-art assessment. *Hydrology and Earth System Sciences* 18(7), 2735-2772.
- Hirabayashi, Y., Mahendran, R., Koirala, S., Konoshima, L., Yamazaki, D., Watanabe, S., Kim, H., Kanae, S., 2013. Global flood risk under climate change. *Nature Climate Change* 3, 816-821.
- HM Government (2016). National Flood Resilience Review. [https://www.gov.uk/government/uploads/system/uploads/attachment\\_data/file/551137/national-flood-resilience-review.pdf](https://www.gov.uk/government/uploads/system/uploads/attachment_data/file/551137/national-flood-resilience-review.pdf) [accessed 06 April, 2016].
- Huntingford, C., Marsh, T., Scaife, A.A., Kendon E.J., Hannaford, J., Kay, A.L., Lockwood M., Prudhomme, C., Reynard, N.S., Parry, S., Lowe, J.A., Screen, J.A., Ward, H.C., Roberts, M., Stott, P.A., Bell, V.A., Bailey, M., Jenkins A., Legg, T., Otto, F.E.L., Massey, N., Schaller, N., Slingo, J., Allen, M.R., 2014. Potential influences on the United Kingdom's floods of winter 2013/14. *Nature Climate Change* 4, 769-777.
- Hydrologic Ensemble Prediction Experiment, n.d. [www.hepex.org](http://www.hepex.org), [accessed 24 April, 2017].
- Javelle, P., Demargne, J., Defrance, D., Pansu, J. and Arnaud, P., 2014. Evaluating flash-flood warnings at ungauged locations using post-event surveys: a case study with the ALGA warning system. *Hydrological Sciences Journal*, 59 (7), 1390-1402.
- Kendon, E. J., Ban, N., Roberts, N.M., Fowler, H.J., Roberts, M.J., Chan, S.C., Evans, J.P., Fosser, G., Wilkinson, J.M., 2016 Do convection-permitting regional climate models improve projections of future precipitation change?. *Bulletin of the American Meteorological Society*.
- Klinger, C., Landeg, O., Murray, V., 2014. Power Outages, Extreme Events and Health: a Systematic Review of the Literature from 2011-2012. *PLOS Currents*, 6.
- Kumar, P., 2011. Typology of hydrologic predictability. *Water Resources Research* 47(4), W00H05.
- Landeg, O., Lawson, J., 2014. Effective flood resilience in health providers: Flooding at a major NHS Blood and Transplant Facility. in *Chemical Hazards & Poisons Report*, Public Health England, Sep, Iss.24.
- Lavers, D. A., Allan, R. P., Wood, E. F., Villarini, G., Brayshaw, D. J., Wade, A. J., 2011. Winter floods in Britain are connected to atmospheric rivers. *Geophysical Research Letters* 38, L23803.
- Le Coz, J., Patalano, A., Collins, D., Guillén, N.F., García, C. M., Smart, G.M., Bind, J., Chiaverini, A., Le Boursicaud, R., Dramais, G., Braud, I., 2016. Crowdsourced data for flood hydrology: Feedback from recent citizen science projects in Argentina, France and New Zealand. *Journal of Hydrology* 541, B, pp. 766-777.
- Liechti, K., Zappa, M., Fundel, F., Germann, U., 2013. Probabilistic evaluation of ensemble discharge nowcasts in two nested Alpine basins prone to flash floods. *Hydrological Processes* 27, 5-17.
- Liguori, S., Rico Ramirez, M.A., Schellart, A.N.A., Saul A. J., 2012. Using probabilistic radar rainfall nowcasts and NWP forecasts for flow prediction in urban catchments. *Atmospheric Research* 103, 80-95.
- Macdonald, D., Dixon, A., Newell, A., Hallways, A., 2012. Groundwater flooding within an urbanised flood plain. *Journal of Flood Risk Management* 5(1): 68-80.
- Marchi, L., Borga, M., Preciso, E., Sangati, M., Gaume, E., Bain, V., Delrieu, G., Bonnifait, L., Pogačnik, N., 2009. Comprehensive post-event survey of a flash flood in Western Slovenia: observation strategy and lessons learned. *Hydrological Processes* 23, 3761-3770.
- McCarthy, S., Tunstall, S., Parker, D., Faulkner, H., Howe, J., 2007. Risk communication in emergency response to a simulated extreme flood. *Environmental Hazards* 7 (3), 179-192.
- Merz, B., Kreibich, H., Schwarze, R., Thieken, A., 2010. Assessment of economic flood damage. *Natural Hazards Earth System Sciences* 10, 1697-1724.

- Michaels, S., 2015. Probabilistic forecasting and the reshaping of flood risk management. *Journal of Natural Resources Policy Research* 7 (1), 41-51.
- Muchan, K., Lewis, M., Hannaford, J. Parry, S., 2015. The winter storms of 2013/2014 in the UK: hydrological responses and impacts. *Weather* 70, 55-61.
- Pagano, T.C., Pappenberger, F., Wood, A.W., Ramos, M.H., Persson, A., Anderson, B., 2016. Automation and human expertise in operational river forecasting. *WIREs Water* 3 (5), 692-705.
- Pagano, T.C., Wood, A.W., Ramos, M.H., Cloke, H.L., Pappenberger, F., Clark, M. P., Cranston, M., Kavetski, D., Mathevet, T., Sorooshian, S., Verkade, J.S., 2014. Challenges of Operational River Forecasting. *Journal of Hydrometeorology* 15, 1692-1707.
- Palla, A., Colli, M., Candela, A., Aronica, G.T. Lanza, L.G., 2016. Pluvial flooding in urban areas: the role of surface drainage efficiency. *Journal of Flood Risk Management*.
- Pappenberger, F., Beven, K. J., 2006. Ignorance is bliss: Or seven reasons not to use uncertainty analysis. *Water Resources Research* 42, W05302.
- Pappenberger, F., Cloke, H. L., Parker, D. J., Wetterhall, F., Richardson, D.S., Thielen, J., 2015. The monetary benefit of early flood warnings in Europe. *Environmental Science and Policy* 51, 278-291.
- Pappenberger, F., Dutra, E., Wetterhall, F., Cloke H.L., (2012) Deriving global flood hazard maps of fluvial floods through a physical model cascade. *Hydrology and Earth System Sciences* 16 (11), 4143-4156.
- Pappenberger, F., Stephens, E., Thielen, J., Salamon, P., Demeritt, D., van Andel, S. J., Wetterhall, F., Alfieri, L., 2013. Visualizing probabilistic flood forecast information: expert preferences and perceptions of best practice in uncertainty communication. *Hydrological Processes* 27, 132-146.
- Peña, J.C., Schulte, L., Badoux, A., Barriendos, M., Barrera Escoda, A., 2015) Influence of solar forcing, climate variability and modes of low-frequency atmospheric variability on summer floods in Switzerland. *Hydrology and Earth System Sciences* 19, 3807-3827.
- Perks, M.T., Russell, A.J., Large, A.R.G., (2016). Technical Note: Advances in flash flood monitoring using unmanned aerial vehicles (UAVs). *Hydrology and Earth System Sciences* 20, 4005-4015.
- Ramos, M.H., Mathevet, T., Thielen, J., Pappenberger, F., 2010. Communicating uncertainty in hydro-meteorological forecasts: mission impossible?. *Meteorological Applications* 17(2), 223-235.
- Ramos, M.H., van Andel, S.J., Pappenberger, F., 2013. Do probabilistic forecasts lead to better decisions?. *Hydrology and Earth System Sciences* 9 (17), 2219-2232.
- Revilla Romero, B., Hirpa, F.A., Thielen del Pozo, J., Salamon, P., Brakenridge, R., Pappenberger, F., De Groeve T., 2015. On the Use of Global Flood Forecasts and Satellite-Derived Inundation Maps for Flood Monitoring in Data-Sparse Regions. *Remote Sensing* 7 (11), 15702-15728.
- Rodríguez Rincón, J.P., Pedrozo Acuña, A., Breña Naranjo, J.A., 2015. Propagation of hydro-meteorological uncertainty in a model cascade framework to inundation prediction. *Hydrology and Earth System Sciences* 19, 2981-2998.
- Romanowicz, R., Beven, K.J., 2003. Bayesian estimation of flood inundation probabilities as conditioned on event inundation maps. *Water Resources Research* 39 (3), 1073.
- Rufat, S., Tate, E., Burton, C.G., Maroof, A.S., 2015. Social vulnerability to floods: Review of case studies and implications for measurement. *International Journal of Disaster Risk Reduction* 14 (4), 470-486
- Sampson, C.C., Fewtrell, T.J., O'Loughlin, F., Pappenberger, F., Bates, P.B., Freer, J. E., Cloke, H.L., 2014. The impact of uncertain precipitation data on insurance loss estimates using a flood catastrophe model. *Hydrology and Earth System Sciences* 18, 2305-2324.
- Schröter, K., Kunz, M., Elmer, F., Mühr, B., Merz, B., 2015. What made the June 2013 flood in Germany an exceptional event? A hydro-meteorological evaluation. *Hydrology and Earth System Sciences* 19, 309-327.
- Scussolini, P., Aerts, J.C.J.H., Jongman, B., Bouwer, L.M., Winsemius, H.C., de Moel, H., Ward, P.J., 2016. FLOPROS: an evolving global database of flood protection standards. *Natural Hazards and Earth System Sciences* 16, 1049-1061.
- Slater, L.J., Singer, M.B., Kirchner, J.W., 2015. Hydrologic versus geomorphic drivers of trends in flood hazard, *Geophysical Research Letters* 42, 370376.
- Stephens, E., Cloke, H., 2014. Improving flood forecasts for better flood preparedness in the UK (and beyond). *Geographical Journal* 180 (4), pp. 310-316.
- Stephens, E., Day, J.J., Pappenberger, F., Cloke, H., 2015. Precipitation and floodiness. *Geophysical Research Letters* 42 (23), 10316-10323.
- Thielen, A. H., Kreibich, H., Muller, M. Merz, B., 2007. Coping with floods: preparedness, response and recovery of flood-affected residents in Germany in 2002. *Hydrological Sciences Journal* 52(5), 1016-1037.
- Thielen del Pozo, J., Salamon, P., Burek, P., Pappenberger, F., Eklund, C., Sprokkereef, E., Hazlinger, M., Padilla Garcia, M., Garcia Sanchez, R., 2017. Handbook of hydrometeorological forecasting. Forthcoming.
- Thielen del Pozo, J., Thiernig, V., Pappenberger, F., Revilla-Romero, B., Salamon, P., De Groeve, T., Hirpa, F., 2015. The benefit of continental flood early warning systems to reduce the impact of flood disasters: An assessment for Europe and an outlook for Africa. JRC Science for Policy Report. EUR 27533 EN.
- Thiemiig, V., Bisselink, B., Pappenberger, F., Thielen, J., 2015. A pan-African medium-range ensemble flood forecast system. *Hydrology and Earth System Sciences* 19, 3365-3385.
- UNISDR, 2015. Sendai Framework for Disaster Risk Reduction 2015-2030. UNISDR, Geneva, Switzerland.
- Versini, P.A., Berenguer, M., Corral, C., Sempere Torres, D., 2014. An operational flood warning system for poorly gauged basins: demonstration in the Guadalhorce basin (Spain). *Natural Hazards* 71(3), 1355-1378.
- Vigicruces, 2017. Service central d'hydrométéorologie et d'appui à la prévision des inondations (Schapi). <https://www.vigicruces.gouv.fr/>, [accessed 16 April, 2017] (in French).
- Vormoor, K., Lawrence, D., Heistermann, M., and Bronstert, A., 2015. Climate change impacts on the seasonality and generation processes of floods — projections and uncertainties for catchments with mixed snowmelt/rainfall regimes. *Hydrology and Earth System Sciences* 19, 913-931.

- Walker, D., Forsythe, N., Parkin, G., Gowing J., (2016). Filling the observational void: scientific value and quantitative validation of hydrometeorological data from a community-based monitoring programme. *Journal of Hydrology* 538, 713–725.
- Ward, P.J., Jongman, B., Weiland, F.S., Bouwman, A., van Beek, R., Bierkens, M.F.P., Ligtoet, W., Winsemius, H.C., 2013. Assessing flood risk at the global scale: model setup, results, and sensitivity. *Environmental Research Letters* 8, 044019.
- Watson, D., Adams, M., 2010. Design for Flooding: Architecture, Landscape and Urban Design for Resilience to Climate Change. John Wiley & Sons.
- Winsemius, H.C., Van Beek, L.P.H., Jongman, B., Ward, P.J., Bouwman, A., 2013. A framework for global river flood risk assessments. *Hydrology and Earth System Sciences* 17(5), 1871–1892.
- Younis, J., Ramos, M. H., Thielen, J., 2008. EFAS forecasts for the March-April 2006 flood in the Czech part of the Elbe River Basin — a case study. *Atmospheric Science Letters*, 9 (2), 88–94.
- Zsótér, E., Pappenberger, F., Smith, P., Emerton, R.E., Dutra, E., Wetterhall, F., Richardson, D., Bogner, K., Balsamo, G., 2016. Building a Multimodel Flood Prediction System with the TIGGE Archive. *Journal of Hydrometeorology*.

### 3.5 Hydrological risk: landslides

- Jakob, M., 2000. The impacts of logging on landslide activity at Clayoquot Sound, British Columbia. *CATENA* 38 (4), 279–300.
- Van der Linden, P., Mitchell, J.F.B., (Eds.), 2009: ENSEMBLES: Climate Change and its Impacts: Summary of research and results from the ENSEMBLES project. 160pp.
- Cannon, S. H., Gartner, J. E., 2005. Wildfire-related debris flow from a hazards perspective. In: *Debris-flow Hazards and Related Phenomena*. Springer Praxis Books. Springer Berlin Heidelberg, pp. 363–385.
- Shakesby, R., Doerr, S., 2006. Wildfire as a hydrological and geomorphological agent. *Earth-Science Reviews* 74 (3–4), 269–307.
- European Commission, 2006. Proposal for a Directive of the European Parliament and of the Council establishing a framework for the protection of soil and amending Directive 2004/35/EC. COM/2006/0232 final - COD 2006/0086.
- Baum, R.L., Godt, J.W., 2010. Early warning of rainfall-induced shallow landslides and debris flows in the USA. *Landslides* 7, 259–272.
- Berger, M., Moreno, J., Johannessen, J.A., Levelt, P.F., Hanssen, R.F., 2012. ESA's sentinel missions in support of Earth system science. *Remote Sensing of Environment* 120, 84–90.
- Bishop, A.W., Hutchinson, J. N., Penman, A.D.M., Evans, H.E., 1969. Geotechnical investigation into the causes and circumstances of the disaster of 21 October 1966. In: *A selection of technical reports submitted to the Aberfan Tribunal*. HMSO, London, UK, pp. 1–80.
- Blikra, L. H., 2008. The Åknes rockslide: Monitoring, threshold values and early-warning. In: *Landslides and Engineering Slopes: From the Past to the Future*. Proceedings of the 10th International Symposium on Landslides and Engineering Slopes, Xi'an, China.
- Blikra, L.H., 2012. The Åknes rockslide, Norway. In: Clague, J. J., Stead, D. (eds), *Landslides: types, mechanisms and modeling*. Cambridge University Press, Cambridge, pp. 323–335.
- Casagli, N., Catani, F., Del Ventisette, C., Luzi, G., 2010. Monitoring, prediction, and early warning using ground-based radar interferometry. *Landslides* 7, 291–301.
- Catani, F., Tofani, V., Lagomarsino, D., 2016. Spatial patterns of landslide dimension: A tool for magnitude mapping. *Geomorphology* 273, 361–373.
- Cloutier, C., Agliardi, F., Crosta, G.B., Frattini, P., Froese, C., Jaboyedoff, M., Locat, J., Michoud, C., Marui, H., 2015. The First International Workshop on Warning criteria for Active Slides: technical issues, problems and solutions for managing early warning systems. *Landslides* 12, 205–212.
- Corominas, J., Van Westen, C., Frattini, P., Cascini, L., Malet, J.-P., Fotopoulou, S., Catani, F., Van Den Eeckhaut, M., Mavrouli, O., Agliardi, F., Pitilakis, K., Winter, M.G., Pastor, M., Ferlisi, S., Tofani, V., Hervás, J., Smith, J.T., 2014. Recommendations for the quantitative analysis of landslide risk. *Bulletin of Engineering Geology and the Environment* 73 (2), 209–263.
- Crosta, G.B., Agliardi, F., 2003. Failure forecast for large rock slides by surface displacement measurements. *Canadian Geotechnical Journal* 40, 176–191.
- Dai, F.C., Lee, C.F., Ngai, Y.Y., 2002. Landslide risk assessment and management: an overview. *Engineering Geology* 64 (1), 65–87.
- Dash, N., Gladwin, H., 2007. Evacuation Decision Making and Behavioral Responses: Individual and Household. *Natural Hazards Review* 8, 69–77.
- Federico, A., Popescu, M., Elia, G., Fidelibus, C., Internò, G., Murianni, A., 2012. Prediction of time to slope failure: a general framework. *Environmental Earth Sciences* 66 (1), 245–256.
- Fell, R., 1994. Landslide risk assessment and acceptable risk. *Canadian Geotechnical Journal* 31, 261 – 272.
- Fell, R., Hartford, D., 1997. Landslide risk management. In: Cruden, D., Fell, R. (Eds.), *Landslide Risk Assessment*. Balkema, Rotterdam, pp. 51 – 109.
- Froese, C., Moreno, F., 2014. Structure and components for the emergency response and warning system on Turtle Mountain. *Natural Hazards* 70, 1689–1712.
- Gili, J., Corominas, J., Riu, J., 2000. Using global positioning system techniques in landslide monitoring. *Engineering Geology* 55, 167–192.
- Guzzetti, F., Ardizzone, F., Cardinali, M., Galli, M., Rossi, M., Valigi, D., 2009. Landslide volumes and landslide mobilization rates in Umbria, central Italy. *Earth and Planetary Science Letters* 279 (3), 222–229.
- Guzzetti, F., Carrara, A., Cardinali, M., Reichenbach, P., 1999. Landslide hazard evaluation: a review of current techniques and their application in a multi-scale study. *Central Italy*. *Geomorphology* 31, 181–216.
- Guzzetti, F., Peruccacci, S., Rossi, M., Stark, C.P., 2008. The rainfall intensity–duration control of shallow landslides and debris flows: an update. *Landslides* 5, 3–17.
- Guzzetti, F., Mondini, A.C., Cardinali, M., Fiorucci, F., Santangelo, M., Chang, K.-T., 2012. Landslide inventory maps: New tools for an old problem. *Earth-Science Reviews* 112 (1–2), 42–66.
- Guzzetti, F., Reichenbach, P., Cardinali, M., Galli, M., Ardizzone, F., 2005. Probabilistic landslide hazard assessment at the basin scale. *Geomorphology* 72 (1), 272–299.



- Hungri, O., Leroueil, S., Picarelli, L., 2014. The Varnes classification of landslide types — an update. *Landslides* 11 (2), 167–194
- Hutchinson, J.N., 1988. General Report: Morphological and geotechnical parameters of landslides in relation to geology and hydrogeology. In: *Proceedings 5th International Symposium on Landslides*, Lausanne, Switzerland.
- Intrieri, E., Gigli, G., Casagli, N., Nadim, F., 2013. Landslide Early Warning System: toolbox and general concepts. *Natural Hazards and Earth System Sciences* 13, 85–90.
- Intrieri, E., Gigli, G., Mugnai, F., Fanti, R., Casagli, N., 2012. Design and implementation of a landslide early warning system. *Engineering Geology* 147–148, 124–136.
- IPCC, 2012. Managing the Risks of Extreme Events and Disasters to Advance Climate Change Adaptation. A Special Report of Working Groups I and II of the Intergovernmental Panel on Climate Change [Field, C.B., V. Barros, T.F. Stocker, D. Qin, D.J. Dokken, K.L. Ebi, M.D. Mastrandrea, K.J. Mach, G.K. Plattner, S.K. Allen, M. Tignor, P.M. Midgley (eds.)]. Cambridge University Press, Cambridge, UK, and New York, NY, USA.
- Jaedicke, C., van den Eeckhaut, M., Nadim, F., Hervás, J., Kalsnes, B., Vangelsten B.V., Smith, J.T., Tofani, V., Ciurean, R., Winter, M.G., Sverdrup-Thygesen, K., Syre, E., Smebye, H., 2013. Identification of landslide hazard and risk hotspots in Europe. *Bulletin of Engineering Geology and the Environment* 73 (2), 325–339.
- Jakob, M., Owen, T., Simpson, T., 2012. A regional real-time debris-flow warning system for the District of North Vancouver, Canada. *Landslides* 9, 165–178.
- Larsen, I.J., Montgomery, D.R., Korup, O., 2010. Landslide erosion controlled by hill-slope material. *Nature Geoscience* 3, 247–251.
- Marchi, L., Arattano, M., Deganutti, A.M., 2002. Ten years of debris flows monitoring in the Moscardo Torrent (Italian Alps). *Geomorphology* 46, 1–17.
- Michoud, C., Bazin, S., Blikra, L.H., Derron, M.H., Jaboyedoff, M., 2013. Experiences from site-specific landslide early warning systems. *Natural Hazards and Earth System Sciences* 13, 2659–2673.
- Petley, D.N., 2010. Document On the impact of climate change and population growth on the occurrence of fatal landslides in South, East and SE Asia. *Quarterly Journal of Engineering Geology and Hydrogeology* 43(4), 487–496.
- Rossi, M., Guzzetti, F., Reichenbach, P., Mondini, A.C., Peruccacci, S., 2010. Optimal landslide susceptibility zonation based on multiple forecasts. *Geomorphology* 114(3), 129–142.
- Rouyet, L., Kristensen, L., Derron, M.H., Michoud, C., Blikra, L.H., Jaboyedoff, M., Lauknes, T.R., 2016. Evidence of rock slope breathing using Ground-Based InSAR. *Geomorphology*.
- Sättele, M., Bründl, M., Straub, D., 2016. Quantifying the effectiveness of early warning systems for natural hazards. *Natural Hazards and Earth System Sciences* 16, 149–166.
- IPCC, 2013: Climate Change 2013: The Physical Science Basis. Contribution of Working Group I to the Fifth Assessment Report of the Intergovernmental Panel on Climate Change [Stocker, T.F., D. Qin, G.-K. Plattner, M. Tignor, S.K. Allen, J. Boschung, A. Nauels, Y. Xia, B. Bex, P.M. Midgley (eds.)]. Cambridge University Press, Cambridge, United Kingdom and New York, NY, USA.
- Tofani, V., Segoni, S., Agostini, A., Catani, F., Casagli, N., 2013. Technical NB: Use of remote sensing for landslide studies in Europe. *Natural Hazards and Earth System Sciences* 13, 299–309.
- Tinti, S., Pagnoni, G., Zaniboni, F., 2006. The landslides and tsunamis of the 30th of December 2002 in Stromboli analysed through numerical simulations. *Bulletin of Volcanology* 68 (5), 462–479.
- Nations, United, 2015. World population prospects. The 2015 revision. Dept. Economics and Social Affairs. undefined undefined, undefined.
- Witt, A., Malamud, B.D., Rossi, M., Guzzetti, F., Peruccacci, S., 2010. Temporal correlations and clustering of landslides. *Earth Surface Process and Landforms* 35 (10), 1138–1156.

### 3.6 Hydrological risk: wave action, storm surges and coastal flooding

- Arkhipkin, V.S., Gippius, F.N., Koltermann, K.P., Surkova, G.V., 2014. Wind waves in the Black Sea. Results of a hindcast study. *Natural Hazards and Earth System Sciences* 14 (11), 2883–2897.
- Arns, A., Wahl, T., Dangendorf, S., Jensen, J., 2015. The impact of sea level rise on storm surge water levels in the northern part of the German Bight. *Coastal Engineering* 96, 118–131.
- Bacon, S., Carter, D.J.T., 1991. Wave climate changes in the North Atlantic and North Sea. *International Journal of Climatology* 11, 545–558.
- Bates, P.D., Horritt, M.S., Fewtrell, T.J., 2010. A simple inertial formulation of the shallow water equations for efficient two-dimensional flood inundation modelling. *Journal of Hydrology* 387, 33–45.
- Bengal and the Arabian Sea, Tropical Cyclone Programme, Report No TCP21.
- Bindoff, N.L., J. Willebrand, V. Artale, A. Cazenave, J. Gregory, S. Gulev, K. Hanawa, C. Le Quéré, S. Levitus, Y. Nojiri, C.K. Shum, L.D. Talley and A. Unnikrishnan, 2007. Observations: Oceanic Climate Change and Sea Level. In: Solomon, S., D. Qin, M. Manning, Z. Chen, M. Marquis, K.B. Averyt, M. Tignor, Miller, H.L., (Eds.). *Climate Change 2007: The Physical Science Basis. Contribution of Working Group I to the Fourth Assessment Report of the Intergovernmental Panel on Climate Change*. Cambridge University Press, Cambridge, UK and New York, USA, pp. 385–432.
- Breilh, J.F., Chaumillon, E., Bertin, X., Gravelle, M., 2013. Assessment of static flood modeling techniques: application to contrasting marshes flooded during Xynthia (western France). *Natural Hazards and Earth System Sciences* 13, 1595–1612.
- Casas Prat, M., Sierra, J.P., 2013. Projected future wave climate in the NW Mediterranean Sea. *Journal of Geophysical Research Oceans* 118 (7), 3548–3568.
- Cavaleri, L., Fox-Kemper, B., Hemer, M., 2012. Wind Waves in the Coupled Climate System. *Bulletin of the American Meteorological Society* 93, 1651–1661.
- CEFAS, n.d. WaveNet, Cefas' strategic wave monitoring network for the United Kingdom. [www.cefas.co.uk/cefas-data-hub/wavenet/](http://www.cefas.co.uk/cefas-data-hub/wavenet/), [accessed 07 April, 2016].
- Charles, E.D., Idier, D., Delecluse, P., Deque, M., Le Cozannet, G., 2012. Climate change impact on waves in the Bay of Biscay. France. *Ocean Dynamics* 62, 831–848.

- Church, J.A., Gregory, J.M., White, N.J., Platten, S.M., J.X, Mitrovica, 2011. Understanding and projecting sea level change. *Oceanography* 24 (2), 130–143.
- Church, J.A., P.U. Clark, A. Cazenave, J.M. Gregory, S. Jevrejeva, A. Levermann, M.A. Merrifield, G.A. Milne, R.S. Nerem, P.D. Nunn, A.J. Payne, W.T. Pfeffer, D. Stammer, A.S. Unnikrishnan, 2013. Sea Level Change. In: *Climate Change 2013: The Physical Science Basis. Contribution of Working Group I to the Fifth Assessment Report of the Intergovernmental Panel on Climate Change* [Stocker, T.F., D. Qin, G.K. Plattner, M. Tignor, S.K. Allen, J. Boschung, A. Nauels, Y. Xia, V. Bex, P.M. Midgley (eds.)]. Cambridge University Press, Cambridge, UK and New York, USA, pp. 1137–1216.
- Church, J.A., White, N., 2011. Sea-Level Rise from the Late 19th to the Early 21st Century. *Surveys in Geophysics* 32 (4-5), 585–602.
- Conte, D., Lionello, P., 2013. Characteristics of large positive and negative surges in the Mediterranean Sea and their attenuation in future climate scenarios. *Global and Planetary Change* 111, 159–173.
- Cooper, J.A.G., Pile, J., 2014. The adaptation-resistance spectrum: A classification of contemporary adaptation approaches to climate-related coastal change. *Ocean & Coastal Management* 94, 90–98.
- De Vries, H., Breton, M., de Mulder, T., Krestenitis, Y., Ozer, J., Proctor, R., Ruddick, K., Salomon, J. C., Voorrips, A., 1995. A comparison of 2-D storm surge models applied to three shallow European seas. *Environmental Software* 10(1), 23–42.
- Debernard, J.B., Røed, L.P., 2008. Future wind, wave and storm surge climate in the Northern Seas: a revisit. *Tellus A* 60, 427–438.
- Disaster Management Bureau of the Government of the People's Republic of Bangladesh, 2010. National Plan for Disaster Management 2010–2015. Government of the People's Republic of Bangladesh.
- Dodet, G., Bertin, X., Taborda, R., 2010. Wave climate variability in the North-East Atlantic Ocean over the last six decades. *Ocean Modelling* 31 (3-4), 120–131.
- Dottori, F., Martina, M.L.V., Figueiredo, R., 2016. A methodology for flood susceptibility and vulnerability analysis in complex flood scenarios. *Journal of Flood Risk Management*, n/a-n/a.
- Dupuis, H., Michel, D., Sottolichio, A., 2006. Wave climate evolution in the Bay of Biscay over two decades. *Journal of Marine Systems* 63 (3-4), 105–114.
- ECMWF, n.d. Browse reanalysis datasets. <http://www.ecmwf.int/en/research/climate-reanalysis/browse-reanalysis-datasets>, [accessed 17 April, 2017].
- Environment Agency, 2009. Flooding in England: A National Assessment of Flood Risk. Environment Agency report. [https://www.gov.uk/government/uploads/system/uploads/attachment\\_data/file/292928/geho0609bqds-e-e.pdf](https://www.gov.uk/government/uploads/system/uploads/attachment_data/file/292928/geho0609bqds-e-e.pdf) [accessed 07 April, 2016].
- Ferreira, Ó., Garcia, T., Matias, A., Taborda, R., Dias, J.A., 2006. An integrated method for the determination of set-back lines for coastal erosion hazards on sandy shores. *Continental Shelf Research* 26, 1030–1044.
- Gallien, T.W., 2016. Validated coastal flood modeling at Imperial Beach, California: Comparing total water level, empirical and numerical overtopping methodologies. *Coastal Engineering* 111, 95–104.
- Gaslikova, L., Grabemann, I., Groll, N., 2013. Changes in North Sea storm surge conditions for four transient future climate realizations. *Natural Hazards* 66, 1501–1518.
- Gommenginger, C., Thibaut, P., Fenoglio-Marc, L., Quartly, G., Deng, X. Gómez Enri, J. Challenor, P., Gao, Y., 2010. Retracking altimeter waveforms near the coasts — A review of retracking methods and some applications to coastal waveforms. In: Vignudelli, S., Kostianoy, A., Cipollini, P., Benveniste, J. (eds), *Coastal Altimetry*. Springer, Dordrecht, Netherlands.
- Gouldby B., Sayers P., Mulet Marti J., Hassan M., Benwell D., 2008. A methodology for regional-scale flood risk assessment. *Proceedings of the Institution of Civil Engineers-Water Management* 161, (3), 169–182.
- Gräwe, U., Burchard, H., 2012. Storm surges in the Western Baltic Sea: the present and a possible future. *Climate Dynamics* 39, 165–183.
- Grinsted, A., Moore, A.J., Jevrejeva, S., 2010. Reconstructing sea level from paleo and projected temperatures 200 to 2100 AD. *Climate Dynamics* 34(4), 461–472.
- Groll N., Grabemann I., Hünicke B., Meese ,M., 2017. Baltic Sea wave conditions under climate change scenarios. *Boreal Environment Research* 22, 1–12.
- Groll, N., Grabemann, I., Gaslikova, L., 2014. North Sea wave conditions. An analysis of four transient future climate realizations. *Ocean Dynamics* 64 (1), 1–12.
- Haigh, I.D., Wadey, M.P., Gallo, S.L, Loehr, H., Nicholls, R.J., Horsburgh, K., Brown, J.M, Bradshaw, E., 2015. A user-friendly database of coastal flooding in the United Kingdom 1915–2014. *Scientific Data* 2, 150021.
- Haigh, I.D., Wadey, M.P., Wahl, T., Ozsoy, O., Nicholls, R.J., Brown, J.M, Horsburgh, K., Gouldby, B., 2016. Spatial footprint and temporal clustering analysis of extreme sea level and storm surge events around the coastline of the UK. *Scientific Data* 3, 160107.
- Hallegatte, S., Green, C., Nicholls, R. J., Corfee Morlot, J., 2013. Future flood losses in major coastal cities. *Nature Climate Change*, 3, 802–806.
- Hawkes, P.J., Atkins, R., Brampton, A.H., Fortune, D., Garbett, R., Gouldby, B.P., 2001. WAVENET: Nearshore Wave Recording Network for England and Wales: Feasibility Study. HR Wallingford Report TR 122.
- Hemer, M.A., Wang, X.L., Weisse, R., Swail, V.R., 2012. Advancing wind-waves climate science: The COWCLIP project. *Bulletin of the American Meteorological Society* 93, 791–796.
- Hinkel, J., Lincke, D., Vafeidis, A.T., Perrette, M., Nicholls, R.J., Tol, R.S.J., Marzeion, B., Fettweis, X., Ionescu, C., Levermann, A., 2014. Coastal flood damage and adaptation costs under 21st century sea-level rise. *Proceedings of the National Academy of Sciences* 111, 3292–3297.
- Hinkel, J., Nicholls, R., Vafeidis, A., Tol, R.J., Avagianou, T., 2010. Assessing risk of and adaptation to sea-level rise in the European Union: an application of DIVA. *Mitigation and Adaptation Strategies for Global Change* 15, 703–719.
- Horsburgh, K., Ball, T., Donovan, B., Westbrook, G., 2010. Coastal flooding in MCCIP Annual Report Card 2010–11. MCCIP Science Review. Available from: [www.mccip.org.uk/arc](http://www.mccip.org.uk/arc).
- Howard, T., Lowe, J., Horsburgh, K., 2010. Interpreting Century-Scale Changes in Southern North Sea Storm Surge Climate Derived from Coupled Model Simulations. *Journal of Climate* 23, 6234–6247.

- Hünicke, B., Zorita, E., Soomere, T., Madsen, K.S.; Johansson, M., Suursaar, Ü., 2015. Recent Change-Sea Level and Wind Waves. In: The BACC II Author Team (eds.), Second Assessment of Climate Change for the Baltic Sea Basin. Springer, Berlin, pp. 155-185.
- Huthnance, J., Weisse, R., Wahl, T., Thomas, H., Pietrzak, J., Souza, A.J., Van Heteren, S., Schmelzer, N., van Beusekom, J., Colijn, F., Haigh, I., Hjøllø, S., Holfort, J., Kent, E.C., Kühn, W., Loewe, P., Lorkowski, I., Mork, K.A., Pätsch, J., Quante, M., Salt, L., Siddorn, J., Smyth, T., Sterl, A., Woodworth, P. (2016). Recent change - North Sea. In: Quante, M. and Colijn, F. (Ed.), North Sea region climate change assessment. Springer, Switzerland, pp. 85-136.
- Idier, D., Paris, F., Cozannet, G.L., Boulahya, F., Dumas, F., 2017. Sea-level rise impacts on the tides of the European Shelf. *Continental Shelf Research* 137, 56-71.
- IPCC, 2007. Climate Change 2007: The Physical Science Basis. Contribution of Working Group I to the Fourth Assessment Report of the Intergovernmental Panel on Climate Change [Field, C.B., V. Barros, T.F. Stocker, D. Qin, D.J. Dokken, K.L. Ebi, M.D. Mastrandrea, K.J. Mach, G.K. Plattner, S.K. Allen, M. Tignor, P.M. Midgley (eds.)]. Cambridge University Press, Cambridge, UK, and New York, NY, USA.
- IPCC, 2013: Climate Change 2013: The Physical Science Basis. Contribution of Working Group I to the Fifth Assessment Report of the Intergovernmental Panel on Climate Change [Stocker, T.F., D. Qin, G.-K. Plattner, M. Tignor, S.K. Allen, J. Boschung, A. Nauels, Y. Xia, V. Bex, P.M. Midgley (eds.)]. Cambridge University Press, Cambridge, United Kingdom and New York, NY, USA.
- Jevrejeva, S., Grinsted, A., Moore, J., 2014. Upper limit for sea level projections by 2100. *Environmental Research Letters* 9, 104008.
- Jevrejeva, S., Moore, J.C., Grinsted, A., 2010. How will sea level respond to changes in natural and anthropogenic forcings by 2100?. *Geophysical Research Letters* 37, 07703.
- Jordà, G., Gomis, D., Álvarez-Fanjul, E., Somot, S., 2012. Atmospheric contribution to Mediterranean and nearby Atlantic sea level variability under different climate change scenarios. *Global and Planetary Change* 80-81, 198-214.
- Katsman, C.A., Sterl, A., Beersma, J.J., Brink, H.W., Church, J.A., Hazeleger, W., Kopp, R.E., Kroon, D., Kwadijk, J., Lammersen, R., Lowe, J., Oppenheimer, M., Plag, H.P., Ridley, J., Storch, H., Vaughan, D.G., Vellinga, P., Vermeersen, L.L.A., Wal, R.S.W., Weisse, R., 2011. Exploring high-end scenarios for local sea level rise to develop flood protection strategies for a low-lying delta — the Netherlands as an example. *Climate Dynamics* 109 (3-4), 617-645.
- Kopp, R.E., Simons, F.J., Mitrovica, J.X., Maloof, A.C., Oppenheimer, M., 2009. Probabilistic assessment of sea level during the last interglacial stage. *Nature* 462, 863-867.
- Lesser, G.R., Roelvink, J.A., van Kester, J.A.T.M., Stelling, G.S., 2004. Development and validation of a three-dimensional morphological model. *Coastal Engineering* 51, 883-915.
- Lionello, P., Cogo, S., Galati, M.B., Sanna, A., 2008. The Mediterranean surface wave climate inferred from future scenario simulations. *Global and Planetary Change* 63, 152-162.
- Lionello, P., Galati, M.B., Elvini, E., 2010. Extreme storm surge and wind wave climate scenario simulations at the Venetian littoral. *Physics and Chemistry of the Earth Parts* 40, 86-92.
- Lionello, P., Sanna, A., 2005. Mediterranean wave climate variability and its links with NAO and Indian Monsoon. *Climate Dynamics* 25 (6), 611-623.
- Lowe, J.A., Gregory, J.M., Flather, R.A., 2001. Changes in the occurrence of storm surges around the United Kingdom under a future climate scenario using a dynamic storm surge model driven by the Hadley Centre climate models. *Climate Dynamics* 18, 179-188.
- Lowe, J.A., Howard, T., Pardaens, A., Tinker, J., Holt, J., Wakelin, S., Milne, G., Leake, J., Wolf, J., Horsburgh, K., Reeder, T., Jenkins, G., Ridley, J., Dye, S., Bradley, S., 2009. UK Climate Projections science report: Marine and coastal projections. Met Office Hadley Centre, Exeter, UK.
- Lowe, J.A., Howard, T.P., Pardaens, A., Tinker, J., Holt, J., Wakelin, S., Milne, G., Leake, J., Wolf, J., Horsburgh, K., Reeder, T., Jenkins, G., Ridley, J., Dye, S., Bradley, S., 2009. UK Climate Projections science report: Marine and coastal projections. Met Office Hadley Centre, Exeter, UK.
- Lowe, J.A., Woodworth, P.L., Knutson, T., McDonald, R.E., McInnes, K.L., Woth, K., Von Storch, H., Wolf, J., Swail, V., Bernier, N., Gulev, S., Horsburgh, K.J., Unnikrishnan, A.S., Hunter, J.R. & Weisse, R. (2010) Past and future changes in extreme sea levels and waves. In: Church, J.A., Woodworth, P. L., Aarup, T., Wilson, W. S. (eds), *Understanding Sea Level Rise and Variability*. Wiley-Blackwell, London, pp. 326-361.
- Lowe, J.A., Woodworth, P.L., Knutson, T., McDonald, R.E., McInnes, K.L., Woth, K., von Storch, H., Wolf, J., Swail, V., Bernier, N.B., Gulev, S., Horsburgh, K.J., Unnikrishnan, A.S., Hunter, J.R., Weisse, R., 2010. Past and Future Changes in Extreme Sea Levels and Waves, *Understanding Sea-Level Rise and Variability*. Wiley-Blackwell, pp. 326-375.
- M. Tignor, H.L. Miller (eds.). Cambridge University Press, Cambridge, United Kingdom and New York, NY, USA.
- Marcos, M., Chust, G., Jorda, G., Caballero, A., 2012. Effect of sea level extremes on the western Basque coast during the 21st century. *Climate Research* 51, 237-248.
- Marcos, M., Jordà, G., Gomis, D., Pérez, B., 2011. Changes in storm surges in southern Europe from a regional model under climate change scenarios. *Global and Planetary Change* 77, 116-128.
- Matthews, T., Murphy, C., Wilby, R. L., Harrigan, S., 2014. Stormiest winter on record for Ireland and UK. *Nature Climate Change* 4, 738-740.
- Mawdsley, R.J., Haigh, I.D., Wells, N.C., 2015. Global secular changes in different tidal high water, low water and range levels. *Earth's Future* 3, 66-81.
- McCall, R.T., Van Thiel de Vries, J.S.M., Plant, N.G., Van Dongeren, A.R., Roelvink, J.A., Thompson, D.M., Reniers, A.J.H.M., 2010. Two-dimensional time dependent hurricane overwash and erosion modeling at Santa Rosa Island. *Coastal Engineering* 57, 668-683.
- Meier, H.E.M., 2006. Baltic Sea climate in the late twenty-first century: a dynamical downscaling approach using two global models and two emission scenarios. *Climate Dynamics* 27, 39-68.

- Meier, H.E.M., Broman, B., Kjellström, E., 2004. Simulated sea level in past and future climates of the Baltic Sea. *Climate Research* 27, 59-75.
- Menendez, M., Woodworth, P.L., 2010. Changes in extreme high water levels based on a quasi-global tide-gauge dataset. *Journal of Geophysical Research* 115, C10011.
- Mitrovica, J.X., Tamiseia, M.E., Davis, J.L. and Milne, G.A., 2001. Recent mass balance of polar ice sheets inferred from patterns of global sea-level change. *Nature* 409, 1026- 1029.
- Nicholls, R.J., French, J., Burningham, H., Van Maanen, B., Payo, A., Sutherland, J., Walkden, M., Thornhill, G., Brown, J., Luxford, F., Simm, J., Reeve, D.E., Hall, J. W., Souza, A., Stansby, P.K., Amoudry, L.O., Rogers, B.D., Ellis, M., Whitehouse, R., Horrillo-Caraballo, J.M., Karunarathna, H.U., Pan, S., Plater, A., Dix, J., Barnes, J., Heron, E., 2015. Improving Decadal Coastal Geomorphic Predictions: An Overview of the ICOASST Project. In: *Proceedings of the Coastal Sediments, San Diego, USA*.
- Pelling, H.E., Mattias Green, J.A., 2014. Impact of flood defences and sea-level rise on the European Shelf tidal regime. *Continental Shelf Research* 85, 96-105.
- Perez, J., Menendez, M., Camus, P., Mendez, F.J., Losada, I.J., 2015. Statistical multi-model climate projections of surface ocean waves in Europe. *Ocean Modelling* 96, 161-170.
- Perini, L., Calabrese, L., Salerno, G., Ciavola, P., Armaroli, C., 2016. Evaluation of coastal vulnerability to flooding: comparison of two different methodologies adopted by the Emilia-Romagna region (Italy). *Natural Hazards and Earth System Sciences* 16, 181-194.
- Pfeffer, W.T., Harper, J.T., O'Neel, S., 2008. Kinematic constraints on glacier contributions to 21st century sea level rise. *Science* 321, 1340-1343.
- Pickering, M.D., Wells, N.C., Horsburgh, K.J., Green, J.A.M., 2012. The impact of future sea-level rise on the European Shelf tides. *Continental Shelf Research* 35, 1-15.
- Prandle, D., Wolf, J., 1978. The interaction of surge and tide in the North Sea and River Thames. *Geophysical Journal of the Royal Astronomical Society* 55, 203-216.
- PSMSL, 2017. Permanent Service for Mean Sea Level. <http://www.psmsl.org/>, [accessed 17 April, 2017].
- Pugh, D., Woodworth, P., 2014. *Sea-Level Science: Understanding Tides, Surges, Tsunamis and Mean Sea-Level Changes*. Cambridge University Press, Cambridge.
- Purvis, M.J., Bates, P.D., Hayes, C.M., 2008. A probabilistic methodology to estimate future coastal flood risk due to sea level rise. *Coastal Engineering* 55, 1062-1073.
- Rahmstorf, S., 2007. A semi-empirical approach to projecting future sea-level rise. *Science* 315 (5810), 368-370.
- Ramirez, J.A., Lichter, M., Coulthard, T.J., Skinner, C., 2016. Hyper-resolution mapping of regional storm surge and tide flooding: comparison of static and dynamic models. *Natural Hazards* 82, 571-590.
- Report of the Intergovernmental Panel on Climate Change [Solomon, S., D. Qin, M. Manning, Z. Chen, M. Marquis, K.B. Averyt, Roelvink, D., Reniers, A., Dongeren, A.v., Vries, J.v.T.d., McCall, R., Lescinski, J., 2009. Modelling storm impacts on beaches, dunes and barrier islands. *Coastal Engineering* 56, 1133-1152.
- Rossiter, J.R., 1961. Interaction between tide and surge in the Thames. *Geophysical Journal of the Royal Astronomical Society* 6, 29-53.
- Seenath, A., Wilson, M., Miller, K., 2016. Hydrodynamic versus GIS modelling for coastal flood vulnerability assessment: Which is better for guiding coastal management? *Ocean & Coastal Management* 120, 99-109.
- Sekovski, I., Armaroli, C., Calabrese, L., Mancini, F., Stecchi, F., Perini, L., 2015. Coupling scenarios of urban growth and flood hazards along the Emilia-Romagna coast (Italy). *Natural Hazards and Earth System Sciences* 15, 2331-2346.
- Smith, D.E., Hunt, N., Firth, C.R., Jordan, J.T., Fretwell, P.T., Harman, M., Murdy, J., Orford, J.D., Burnside, N.G., 2012. Patterns of Holocene relative sea level change in the North of Britain and Ireland. *Quaternary Science Reviews* 54 (26), 58-76.
- Smith, R.A.E., Bates, P.D., Hayes, C., 2012. Evaluation of a coastal flood inundation model using hard and soft data. *Environmental Modelling & Software* 30, 35-46.
- Sterl, A., van den Brink, H., de Vries, H., Haarsma, R., van Meijgaard, E., 2009. An ensemble study of extreme storm surge related water levels in the North Sea in a changing climate. *Ocean Science* 5, 369-378.
- Thorne, C.R., Evans, E.P., Penning-Roswell, E.C., 2007. *Future Flooding and Coastal Erosion risks*. Thomas Telford Ltd, London, UK.
- Toffoli, A., Lefèvre, J.M., Bitner-Gregersen, E., Monbaliu, J., 2005. Towards the identification of warning criteria: Analysis of a ship accident database. *Applied Ocean Research* 27 (6), 281-291.
- Vermeer, M., Rahmstorf, S., 2009. Global sea level linked to global temperature. *Proceedings of the National Academy of Sciences* 106 (51), 21527-21532.
- Vousdoukas, M.I., Ferreira, O., Almeida, L.P., Pacheco, A., 2012a. Toward reliable storm-hazard forecasts: XBeach calibration and its potential application in an operational early-warning system. *Ocean Dynamics* 62, 1001-1015.
- Vousdoukas, M.I., Mentaschi, L., Voukouvalas, E., Verlaan, M., Feyen, L., 2017. Extreme sea levels on the rise along Europe's coasts. *Earth's Future* submitted after minor revision.
- Vousdoukas, M.I., Voukouvalas, E., Annunziato, A., Giardino, A., Feyen, L., 2016a. Projections of extreme storm surge levels along Europe. *Climate Dynamics* 47, 3171-3190.
- Vousdoukas, M.I., Voukouvalas, E., Mentaschi, L., Dottori, F., Giardino, A., Bouziotas, D., Bianchi, A., Salamon, P., Feyen, L., 2016b. Developments in large-scale coastal flood hazard mapping. *Natural Hazards and Earth System Science* 16, 1841-1853.
- Vousdoukas, M.I., Wziatek, D., Almeida, L.P., 2012b. Coastal vulnerability assessment based on video wave run-up observations at a mesotidal, steep-sloped beach. *Ocean Dynamics* 62, 123-137.
- Wahl, T., Chambers, D.P., 2016. Climate controls multidecadal variability in U. S. extreme sea level records. *Journal of Geophysical Research: Oceans* 121, 1274-1290.
- Wang, X.L., Zwiers, F.W., Swail, V.R., Feng, Y., 2009. Trends and variability of storminess in the Northeast Atlantic region, 1874-2007. *Climate Dynamics* 33, 1179-1195.
- Weisse, R., Storch, H., Callies, U., Chrastansky, A., Feser, F., Grabemann, I., Günther, H., Pluess, A., Stoye, T., Tellkamp, J., Winterfeldt, J., Woth, K., 2009. Regional meteorological-marine reanalysis and climate change projections: results for northern Europe and

- potential for coastal and offshore applications. *Bulletin of the American Meteorological Society* 90 (6), 849–860.
- Williams, J., Horsburgh, K.J., Williams, J.A., Proctor, R.N.F., 2016. Tide and skew surge independence: New insights for flood risk. *Geophysical Research Letters* 43, 6410–6417.
- WMO (World Meteorological Organization (WMO), 2010. Tropical Cyclone Operational Plan for the Bay of
- Wolf, J., 2009. Coastal Flooding — Impacts of coupled wave-surge-tide models. *Natural Hazards* 49 (2), 241–260.
- Wolf, J., 2016. Measurement and analysis of waves in estuarine and coastal waters. In: Uncles, R.J., Mitchell, S.B. (eds), *Estuarine and coastal hydrography and sediment transport*. Estuarine and Coastal Science Association. Cambridge University Press, Cambridge, UK.
- Wolf, J., Brown, J. M., Howarth, M.J., 2011. The wave climate of Liverpool Bay — observations and modelling. *Ocean Dynamics* 61, 639–655.
- Wolf, J., Lowe, J., Howard, T., 2015. Climate Downscaling: Local Mean Sea-Level, Surge and Wave Modelling. In: Nicholls, R. J., Dawson, R.J., Day, S. A. (eds), *Broad Scale Coastal Simulation: New Techniques to Understand and Manage Shorelines in the Third Millennium*. Springer, Dordrecht, Netherlands.
- Wolf, J., Woolf, D. K., 2006. Waves and climate change in the north-east Atlantic. *Geophysical Research Letters* 33 (6), L06604.
- Wong, P.P., Losada, I.J., Gattuso, J.P., Hinkel, J., Khattabi, A., McInnes, K.L., Saito, Y., Sallenger, A., 2014. Coastal systems and low-lying areas. In: Field, C.B., Barros, V.R., Dokken, D.J., Mach, K.J., Mastandrea, M.D., Bilir, T.E., Chatterjee, M., Elbi, K.L., Estrada, Y.O., Genova, R.C., Girma, B., Kissel, E.S., Levy, A.N, MacCracken, S., Mastandrea, P.R., White, L.L. (eds), *Climate Change 2014: Impacts, Adaptation, and Vulnerability. Part A: Global and Sectoral Aspects. Contribution of Working Group II to the Fifth Assessment Report of the Intergovernmental Panel on Climate Change*. Cambridge University Press, Cambridge, United Kingdom and New York, USA, pp. 361–409.
- Woodworth, P.L., 2010. A survey of recent changes in the main components of the ocean tide. *Continental Shelf Research* 30, 1680–1691.
- Woodworth, P.L., Blackman, D.L., 2004. Evidence for systematic changes in extreme high waters since the mid-1970s. *Journal of Climate* 17(6):1190–1197.
- Woodworth, P.L., Gehrels, W.R., Nerem, R.S., 2011. Nineteenth and twentieth century changes in sea level. *Oceanography* 24 (2), 80–93.
- Woodworth, P.L., Teferle, N., Bingley, R., Shennan, I., Williams, S.D.P., 2009. Trends in UK mean sea level revisited. *Geophysical Journal International* 176, 19–30.
- Woolf, D., Wolf, J., 2013. Impacts of climate change on storms and waves. *MCCIP Science Review* undefined, 20–26.
- Woolf, D.K., Challenor, P.G., Cotton, P.D., 2002. The variability and predictability of North Atlantic wave climate. *Journal of Geophysical Research* 107 (10), 3145.
- Woolf, D.K., Cotton, P.D., Challenor, P.G., 2003. Measurements of the offshore wave climate around the British Isles by satellite altimeter. *Philosophical Transactions: Mathematical, Physical & Engineering Sciences* 361 (1802), 27–31.
- Woollings, T., 2010. Dynamical influences on European climate: an uncertain future. *Philosophical Transactions of the Royal Society A* 368, 3733–3756.
- Woth, K., Weisse, R., Von Storch, H., 2006. Climate change and North Sea storm surge extremes: an ensemble study of storm surge extremes expected in a changed climate projected by four different regional climate models. *Ocean Dynamics* 56, 3–15.
- Zacharioudaki, A., Pan, S., Simmonds, D., Magar, V.Reeve, D.E., undefined, 2011. Future wave climate over the west-European shelf seas. *Ocean Dynamics* 61 (6), 807–827.