



**HAL**  
open science

## Aphotic N<sub>2</sub> Fixation in the Eastern Tropical South Pacific Ocean

Sophie Bonnet, Julien Dekaezemacker, Kendra Turk-Kubo, Thierry Moutin, Robert Hamersley, Olivier Grosso, Jonathan Zehr, Douglas Capone

► **To cite this version:**

Sophie Bonnet, Julien Dekaezemacker, Kendra Turk-Kubo, Thierry Moutin, Robert Hamersley, et al.. Aphotic N<sub>2</sub> Fixation in the Eastern Tropical South Pacific Ocean. PLoS ONE, 2013, 8 (12), pp.e81265. 10.1371/journal.pone.0081265 . hal-02163828

**HAL Id: hal-02163828**

**<https://hal.science/hal-02163828>**

Submitted on 11 Sep 2019

**HAL** is a multi-disciplinary open access archive for the deposit and dissemination of scientific research documents, whether they are published or not. The documents may come from teaching and research institutions in France or abroad, or from public or private research centers.

L'archive ouverte pluridisciplinaire **HAL**, est destinée au dépôt et à la diffusion de documents scientifiques de niveau recherche, publiés ou non, émanant des établissements d'enseignement et de recherche français ou étrangers, des laboratoires publics ou privés.



Distributed under a Creative Commons Attribution 4.0 International License

# Aphotic N<sub>2</sub> Fixation in the Eastern Tropical South Pacific Ocean

Sophie Bonnet<sup>1\*</sup>, Julien Dekaezemaeker<sup>1‡</sup>, Kendra A. Turk-Kubo<sup>2</sup>, Thierry Moutin<sup>1</sup>, Robert M. Hamersley<sup>3</sup>, Olivier Grosso<sup>1</sup>, Jonathan P. Zehr<sup>2</sup>, Douglas G. Capone<sup>4</sup>

**1** Mediterranean Institute of Oceanography, Institut de Recherche pour le Développement, Aix Marseille Université, Centre National de la Recherche Scientifique Marseille/Noumea, New Caledonia, France, **2** Department of Ocean Sciences, University of California Santa Cruz, Santa Cruz, California, United States of America, **3** Environmental Studies, Soka University of America, Aliso Viejo, California, United States of America, **4** Department of Biological Sciences, University of Southern California, Los Angeles, California, United States of America

## Abstract

We examined rates of N<sub>2</sub> fixation from the surface to 2000 m depth in the Eastern Tropical South Pacific (ETSP) during El Niño (2010) and La Niña (2011). Replicated vertical profiles performed under oxygen-free conditions show that N<sub>2</sub> fixation takes place both in euphotic and aphotic waters, with rates reaching 155 to 509 μmol N m<sup>-2</sup> d<sup>-1</sup> in 2010 and 24±14 to 118±87 μmol N m<sup>-2</sup> d<sup>-1</sup> in 2011. In the aphotic layers, volumetric N<sub>2</sub> fixation rates were relatively low (<1.00 nmol N L<sup>-1</sup> d<sup>-1</sup>), but when integrated over the whole aphotic layer, they accounted for 87–90% of total rates (euphotic+aphotic) for the two cruises. Phylogenetic studies performed in microcosms experiments confirm the presence of diazotrophs in the deep waters of the Oxygen Minimum Zone (OMZ), which were comprised of non-cyanobacterial diazotrophs affiliated with *nifH* clusters 1K (predominantly comprised of α-proteobacteria), 1G (predominantly comprised of γ-proteobacteria), and 3 (sulfate reducing genera of the δ-proteobacteria and *Clostridium* spp., *Vibrio* spp.). Organic and inorganic nutrient addition bioassays revealed that amino acids significantly stimulated N<sub>2</sub> fixation in the core of the OMZ at all stations tested and as did simple carbohydrates at stations located nearest the coast of Peru/Chile. The episodic supply of these substrates from upper layers are hypothesized to explain the observed variability of N<sub>2</sub> fixation in the ETSP.

**Citation:** Bonnet S, Dekaezemaeker J, Turk-Kubo KA, Moutin T, Hamersley RM, et al. (2013) Aphotic N<sub>2</sub> Fixation in the Eastern Tropical South Pacific Ocean. PLoS ONE 8(12): e81265. doi:10.1371/journal.pone.0081265

**Editor:** Stefan Bertilsson, Uppsala University, Sweden

**Received:** August 13, 2013; **Accepted:** October 10, 2013; **Published:** December 12, 2013

**Copyright:** © 2013 Bonnet et al. This is an open-access article distributed under the terms of the Creative Commons Attribution License, which permits unrestricted use, distribution, and reproduction in any medium, provided the original author and source are credited.

**Funding:** Funding agencies: Institut National des Sciences de l'Univers (Humboldt-Fix project, PI: S. Bonnet), France, and the National Science Foundation (division of OCEan sciences 0850801, PI: D.G. Capone), USA. The funders had no role in study design, data collection and analysis, decision to publish, or preparation of the manuscript.

**Competing Interests:** The authors have declared that no competing interests exist.

\* E-mail: sophie.bonnet@univ-amu.fr

‡ Current address: Max Planck Institute for Marine Microbiology, Bremen, Germany

## Introduction

The efficiency of oceanic carbon (C) sequestration depends upon many factors, among which is the availability of nutrients to support phytoplankton growth in the illuminated surface ocean. In particular, large amounts of nitrogen (N) are required, as it is an essential component of proteins, nucleic acids and other cellular constituents. Dissolved N in the form of nitrate (NO<sub>3</sub><sup>-</sup>) or ammonium (NH<sub>4</sub><sup>+</sup>) is directly usable for growth, but concentrations of fixed N are low (<1 μmol L<sup>-1</sup>) and often growth-limiting in most of the open ocean euphotic zone [1]. Dinitrogen (N<sub>2</sub>) gas dissolved in seawater, on the other hand, is very abundant in the euphotic zone (ca. 450 μmol L<sup>-1</sup>) and could constitute a nearly inexhaustible N source for the marine biota. However, only certain prokaryotic 'N<sub>2</sub>-fixers' (or diazotrophs) are able to use this N source since they can break the triple bond between the two N atoms of the N<sub>2</sub> molecule, and convert it into a usable form (i.e. NH<sub>3</sub>) for assimilation.

The focus of much recent marine N<sub>2</sub> fixation research has been on the NO<sub>3</sub><sup>-</sup>-poor environments of the surface tropical ocean, where it may sustain up to 50% of 'new' primary production [2,3]. The filamentous cyanobacterium *Trichodesmium* spp., which is

widespread in the tropical ocean and has a macroscopic growth form [4], may fix from 60 [5] to 80 Tg of N per year [6]. Until the last decade, this organism was the focus of the bulk of research as it is conspicuous and easily collected [4]. However, since then, studies of the abundance and diversity of the *nifH* gene required for N<sub>2</sub> fixation have elucidated the importance of unicellular pico- and nano-planktonic cyanobacteria [7,8], extending the geographical extent of diazotrophy beyond tropical waters [9], and potentially narrowing the gap between direct measurements and geochemically-based global marine N fixation rates [5]. These molecular tools have also revealed the presence of putative non-cyanobacterial diazotrophs (possessing and potentially expressing the *nifH* gene) in diverse aquatic environments [10], including surface seawater, hydrothermal vents and lakes [11] and references therein). In marine waters, these diazotrophs seem to be almost ubiquitous [12], but few studies e.g. [13,14] have focused on these non-cyanobacterial diazotrophs, and our knowledge of their distribution in the ocean and their biogeochemical importance for the marine N budget is still very limited.

The N budget for the global ocean is poorly constrained, with some suggestions that sinks (denitrification and anammox) exceed sources (N<sub>2</sub> fixation) [15]. The high energy and iron (Fe)

requirements [16,17] of the N<sub>2</sub> fixation reaction have implied that this process occurs mainly in the large oligotrophic areas of the ocean that are depleted in fixed N, and where fixing N<sub>2</sub> gives an ecological advantage. This may be particularly the case in areas which receive high Fe-rich Saharan dust such as the North Atlantic [18], or which are under the influence of terrigenous and submarine Fe sources, such as the North Pacific near Hawaii [19,20] or the South West Pacific [20,21,22,23]. However, recent studies [24,25] have hypothesized that N<sub>2</sub> fixation might also be associated with denitrified surface waters over oxygen minimum zones (OMZs), which have measurable NO<sub>3</sub><sup>-</sup>, but are depleted in N relative to phosphorus (P). This hypothesis has been recently confirmed in the coastal surface waters of the Peruvian-Chilean upwelling [26,27] as well as throughout the eastern tropical South Pacific Ocean (ETSP) [28], where depth-integrated rates over the upper water column were comparable to those found in subtropical gyres. *nifH* sequences recovered from these areas within the upper 200 m of the ocean were mostly non-cyanobacterial and clustered with known heterotrophic sequences [26]. This led us to explore N<sub>2</sub> fixation in the aphotic zone of the ETSP.

Previous studies conducted in surface waters of the ETSP indicated that N<sub>2</sub> fixation was highly variable in space and time, with depth-integrated rates varying from 10- to 30-fold between cruises performed at the same locations [26,28]. Although the activities of heterotrophic diazotrophs might potentially be contributing to this high temporal variability, very few studies have examined the regulation of N<sub>2</sub> fixation by heterotrophic bacteria in marine waters. Organic C availability has been hypothesized to control marine heterotrophic N<sub>2</sub> fixation [29] as a consequence of the high energy requirements of the reaction, but, to our knowledge, the effect of organic molecules on heterotrophic N<sub>2</sub> fixation has never been studied in OMZs.

In this study, we investigated N<sub>2</sub> fixation along a transect across the ETSP in 2010 and 2011 through temperature, oxygen and nutrient gradients. We quantified N<sub>2</sub> fixation throughout the 0 to 2000 m depth range in order to evaluate its potential biogeochemical impact on the marine N budget, and we conducted aphotic nutrient addition bioassays in the core of the aphotic OMZ in order to investigate which nutrients might control N<sub>2</sub> fixation in this environment. We also phylogenetically characterized the diazotrophs community composition in the core of the OMZ and how it responded to some of the nutrient amendments.

## Methods

Our research was carried out during two cruises in the ETSP, aboard the R/V Atlantis in February and March 2010, and the R/V Melville in March and April 2011. Experiments were performed along a transect that began in northern Chile and ran west along 20°S, from the nutrient-rich waters at 82°W to the more oligotrophic and low-NO<sub>3</sub><sup>-</sup> waters at 100°W, and returned along 10°S (Fig. 1). No specific permissions were required for these locations/activities as both cruises took place in international waters. This study did not involve endangered or protected species. The coastal waters of this region of the ETSP are characterized by a permanent wind-driven upwelling of cool nutrient-replete water (Fig. 1), which supports high primary productivity and a persistent subsurface OMZ, where O<sub>2</sub> concentrations are low enough to induce the anaerobic processes of the N cycle, such as denitrification and anammox [30,31,32]. These O<sub>2</sub>-deficient waters are carried by Eckman transport westward beyond the limit of our transect. The ETSP is subjected to the inter-annual climatic variability of the El Niño-Southern

Oscillation (ENSO), which modulates the strength of the upwelling. The 2010 cruise took place during an El Niño event (Multivariate ENSO index: 1.52) and the 2011 cruise during a La Niña event (Multivariate ENSO index: -1.49) [NOAA Climate Diagnostics Center, Wolter and Timlin (1993, 1998); data from <http://www.esrl.noaa.gov/psd/enso/mei.table.html>].

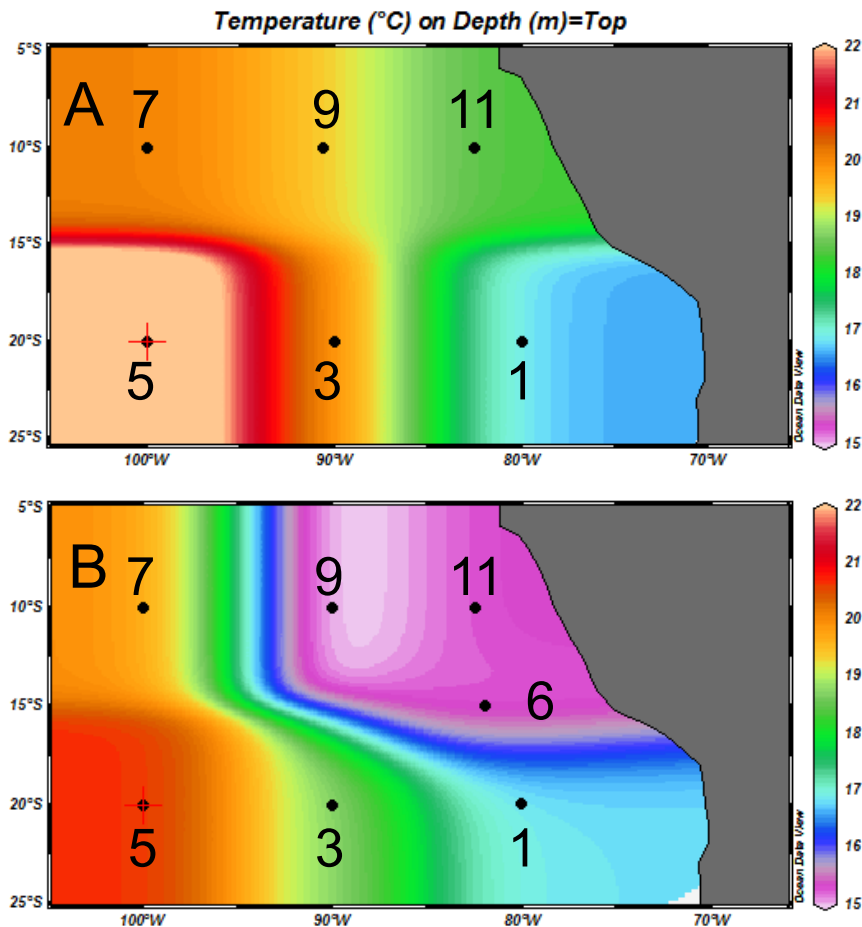
## Hydrographic and nutrient measurements

Hydrographic and nutrient measurements were performed at 6 stations in 2010 and 7 stations in 2011 (Fig. 1). Vertical profiles of temperature, chlorophyll *a*, fluorescence and dissolved oxygen were obtained using a Seabird 911 plus CTD equipped with a model 43 oxygen sensor and a Wetlabs ECO-AFL/FL chlorophyll fluorometer. Oxygen values were calibrated by micro-Winkler [33]. Seawater samples were collected at selected depths using a rosette equipped with 24 12-L Niskin bottles. Samples for inorganic nutrient (NO<sub>3</sub><sup>-</sup> and PO<sub>4</sub><sup>3-</sup> concentrations) analyses were collected in acid-washed 20-mL plastic bottles. Nutrient concentrations were determined using standard colorimetric techniques [34] on a Bran Luebbe AA3 autoanalyzer. Detection limits for the procedures were 0.02 to 0.52 μmol L<sup>-1</sup> for NO<sub>x</sub> [nitrite (NO<sub>2</sub><sup>-</sup>)+NO<sub>3</sub><sup>-</sup>] and 0.005 to 0.083 μmol L<sup>-1</sup> for PO<sub>4</sub><sup>3-</sup>.

## Vertical profiles of N<sub>2</sub> fixation

Rates of N<sub>2</sub> fixation were measured using the <sup>15</sup>N<sub>2</sub> tracer method [35]. Water samples were dispensed into acid-leached 4.5-L polycarbonate bottles. During the 2010 cruise, this work was exploratory and unreplicated (except for nutrient addition bioassays, see below) measurements were made at 12 to 14 depths between the surface and 2000 m at stations 1, 9 and 11. During the 2011 cruise, samples were collected at stations 1, 5, 6, 7, 9 and 11 in triplicates at 12 depths between the surface and 2000 m, with a specific focus on O<sub>2</sub> gradients. Depths were chosen in order to sample the oxycline, at least 3 depths within the core of the OMZ, as well as an additional 3 within the second increasing oxygen concentrations below the OMZ. Most of these depths were located in the aphotic zone.

On both cruises, specific care was taken to avoid O<sub>2</sub> contamination and to perform incubations under strict oxygen-free conditions as described in [36]. Briefly, before each profile, the 36 4.5-L bottles were filled with deionized water, then the deionized water was flushed with argon and finally filled with seawater via tubing into the bottom of the argon-filled bottles to minimize gas exchange. Bottles were then closed with septa and spiked with 3 mL <sup>15</sup>N<sub>2</sub> (99 atom % EURISO-TOP) via a gas-tight syringe. Each bottle was shaken 30 times to fragment the <sup>15</sup>N<sub>2</sub> bubble and facilitate its dissolution. Recent work has suggested that with this method, there may be incomplete equilibration of the added <sup>15</sup>N<sub>2</sub> gas bubble with the seawater sample, resulting in a dissolved <sup>15</sup>N<sub>2</sub> concentration in the sample that is lower than the equilibrium value assumed in the calculation of <sup>15</sup>N<sub>2</sub> fixation rates [37]. This may lead to a potential underestimate of N<sub>2</sub> fixation rates [38,39]. Therefore, the values given in the present study should be considered as minimum estimates (discussed below). Bottles were then incubated either in on-deck incubators at irradiances specific from the sampling depth using blue screening and cooled with circulating surface seawater (photic samples), or in dark rooms at 12°C or 5°C depending of the sampling depth. After incubation, the triplicate bottles from each depth were filtered onto precombusted (4 h at 450°C) 25-mm GF/F filters. Filters were stored at -20°C until the end of the cruise, then dried for 24 h at 60°C and stored dry until mass spectrometric analysis. During the 2011 cruise, an extra 4.5-L bottle was collected at each depth of the profile, spiked with <sup>15</sup>N<sub>2</sub> and immediately filtered in



**Figure 1. Location of stations superimposed upon seawater temperature at 75-m-depth.** (A) the 2010 cruise (R/V Atlantis), and (B) the 2011 cruise (R/V Melville). Station numbering are identical to that of 2 companion papers [28,42]. doi:10.1371/journal.pone.0081265.g001

order to determine the initial background  $\delta^{15}\text{N}$  in the particulate organic N (PON) for calculations of N<sub>2</sub> fixation rates. During the 2010 cruise, the value of  $\delta^{15}\text{N}$  in air (0.00366) was used as a reference value for these calculations, which may introduce a potential bias, except at Station 1 where  $^{15}\text{N}$  atom % of the PON at depth was available.

#### Nutrient addition bioassays in the core of the OMZ

Nutrient addition bioassays of N<sub>2</sub> fixation were performed at one single depth in the core of the OMZ (based on O<sub>2</sub>-CTD profiles) at 3 stations (Stations 5, 7 and 11, between 140- and 450-m depth) during the 2010 cruise and at 6 stations (Stations 1, 5, 6, 7, 9 and 11, between 320- and 475-m depth-) during the 2011 cruise. All experiments were performed in triplicate and under strict oxygen-free conditions (using the argon flushing method described above) to avoid inhibition of N<sub>2</sub> fixation by oxygen. Immediately after collection, bottles were capped with septa and amended with nutrients via syringes. During the 2010 cruise, at each of the 3 stations, triplicate bottles were left as unamended controls, and a second set of bottles was amended with glucose to obtain a final concentration of 10  $\mu\text{mol L}^{-1}$ . During the 2011 cruise, triplicate bottles were left as unamended controls, and a second set of triplicate bottles was amended with a mixture of three simple carbohydrate substrates (39% glucose, 29% acetate and 32% pyruvate, final total concentration of 1  $\mu\text{mol}$

carbohydrate L-1) to test the effect of a source of dissolved organic C (DOC) on N<sub>2</sub> fixation. A third set was amended with a mixture of three amino acids as a source of both DOC and dissolved organic N (DON) (20% leucine, 23% glutamic acid and 56% alanine) to reach a final concentration of 1  $\mu\text{mol amino acids L}^{-1}$ . The proportion of each carbohydrate and amino-acid has been chosen in order to add the same quantity of organic C in the two treatments (4  $\mu\text{mol L}^{-1}$ ). A fourth set was amended with ATP (source of dissolved organic P, DOP) to reach a final concentration of 1  $\text{nmol L}^{-1}$ , and a fifth set was amended with 8  $\mu\text{mol L}^{-1}$  of NO<sub>3</sub><sup>-</sup> to test its potential inhibitory effect on heterotrophic N<sub>2</sub> fixation. Bottles were then incubated in a dark cold room at 12°C for 24 h in order to leave enough time to induce any potential nutrient stimulation. After 24 h, all bottles were spiked with  $^{15}\text{N}_2$  as described above, and incubation was continued under the same conditions for an additional 24 h. At the end of each incubation, the three treatments and control replicates were filtered as described above in order to measure N<sub>2</sub> fixation rates, and amplification of the *ni/H* gene (2010 only). Samples were also collected from bottles sacrificed at time zero in order to quantify background NO<sub>x</sub> and PO<sub>4</sub><sup>3-</sup> concentrations at every station. NO<sub>x</sub> concentrations were also measured just after the NO<sub>3</sub><sup>-</sup> additions in order to confirm the added concentrations at the beginning of the incubations (data not shown).

## Mass spectrometric analyses

The isotopic enrichment of particulate N after the incubation of seawater with <sup>15</sup>N<sub>2</sub> was measured by continuous flow isotope ratio mass spectrometry of pelletized filters (Europa Integra-CN), calibrated every 10 samples using reference material (International Atomic Energy Agency [AIEA], Analytical Quality Control Services). The linearity of <sup>15</sup>N atom % as a function of increasing sample PON mass was verified as detailed in [40] on both natural and <sup>15</sup>N enriched material. This step is critical in ultraligotrophic environments or deep waters, where suspended PON concentrations are low. <sup>15</sup>N atom % was linear (Fisher test,  $p < 0.01$ ) between 0.20 and 39  $\mu\text{mol N}$ , which is within the range of PON measured in all of our samples (0.27 to 4.91  $\mu\text{mole N}$  depending on the station and depth).

Detection and quantification limits for particulate N were calculated daily, as 3 times and 10 times the standard deviation of <sup>15</sup>N analysis of blanks, respectively. Detection limits ranged from 0.10 to 0.17  $\mu\text{mole N}$ , and quantification limits ranged from 0.13 to 0.26  $\mu\text{mole N}$ , depending on the station. The <sup>15</sup>N isotope enrichment of a sample was calculated using the <sup>15</sup>N atom % excess over the <sup>15</sup>N atom % in samples taken from the same station at time zero, which was determined on bottles filtered immediately after adding <sup>15</sup>N<sub>2</sub>. We considered the results to be significant when <sup>15</sup>N excess enrichments were greater than 3 times the standard deviation obtained with ten AIEA references (<sup>15</sup>N atom %  $> 0.0005$ ). The quantification limit of N<sub>2</sub> fixation in this study was 0.01  $\text{nmol L}^{-1} \text{d}^{-1}$ . If only one of the 3 replicate measurements was quantifiable, the average of the 3 replicates was

forced equal to zero, in order to provide minimum estimates of N<sub>2</sub> fixation.

In order to determine areal rates, N<sub>2</sub> fixation measurements were trapezoidally depth-integrated from the summed products of the average of two adjacent rate measurements (including those equal to zero) with the depth interval between them. The standard deviation on the triplicates (2011 cruise) was also used for a trapezoidally depth-integration in order to obtain the standard deviation on integrated rates.

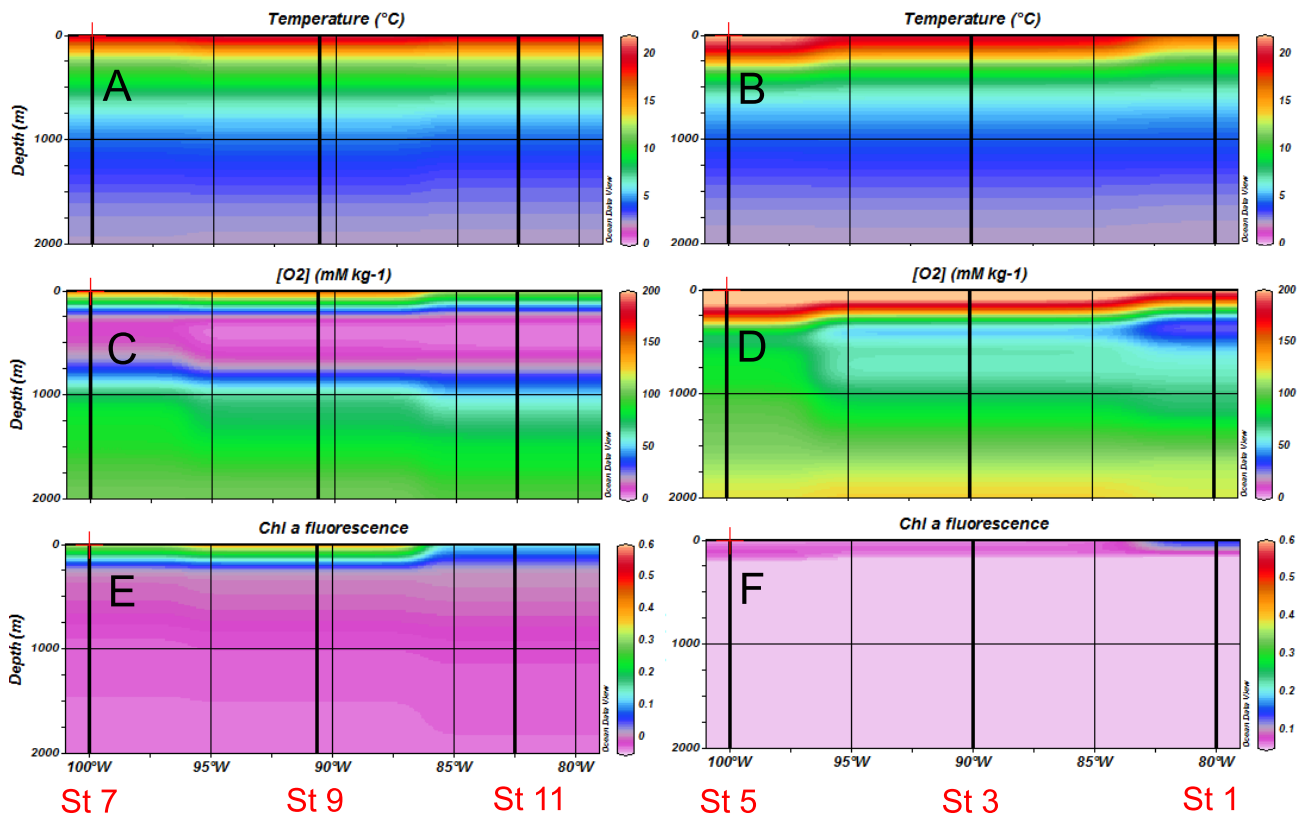
## Statistical analysis

Controls and experimental nutrient treatments were compared using a 2-tailed non parametric Mann-Whitney mean comparison test ( $n = 3$ ,  $\alpha = 0.05$ , unpaired samples).

## Phylogenetic characterization of diazotrophs

In order to characterize the potential diazotrophs present in the core of the OMZ that responded to the addition of glucose, nucleic acid samples were collected from triplicate bioassays during the 2010 cruise for amplification of the *nifH* gene. At T0 and at the termination of the experiment, bottles were immediately filtered as described in [41] onto 25-mm, 0.2- $\mu\text{m}$  Supor filters (GE Osmonics, Minnetonka, MN), and immediately flash frozen in liquid N<sub>2</sub>. All filters were stored at  $-80^\circ\text{C}$  thereafter.

DNA samples were extracted using the Qiagen All Prep kit (Valencia, CA), according to manufacturer's guidelines, with modifications to include freeze-thaw and bead-beating steps to



**Figure 2. Horizontal and vertical distributions of hydrological and biogeochemical parameters during the 2010 cruise (R/V Atlantis).** (A, B) temperature, (C, D) dissolved oxygen, (E, F) chlorophyll fluorescence in the northern transect (left panels) and southern transect (right panels).

doi:10.1371/journal.pone.0081265.g002

disrupt the cells [42]. The wash steps of this protocol were automated using a QIAcube (Qiagen). DNA extracts were stored at  $-20^{\circ}\text{C}$  until use.

Nested PCR amplification targeting a fragment of the *nifH* gene was carried out using degenerate primers *nifH1-4* [43,44] using the reaction and thermocycling conditions described in [42]. Amplicons were purified using a QIAquick Gel Extraction Kit (Qiagen) and cloned using the TOPO TA Cloning Kit for Sequencing (Invitrogen, Carlsbad, CA) according to the manufacturer's guidelines. Purified recombinant plasmids containing partial *nifH* sequences were recovered from clones using the Montage Plasmid Miniprep96 Kit (Millipore, Billerica, MA) and sequenced using Sanger technology at the UC Berkeley DNA Sequencing Center. All DNA extractions and as PCR preparations were performed in a PCR-amplicon free facility at UCSC described in [42].

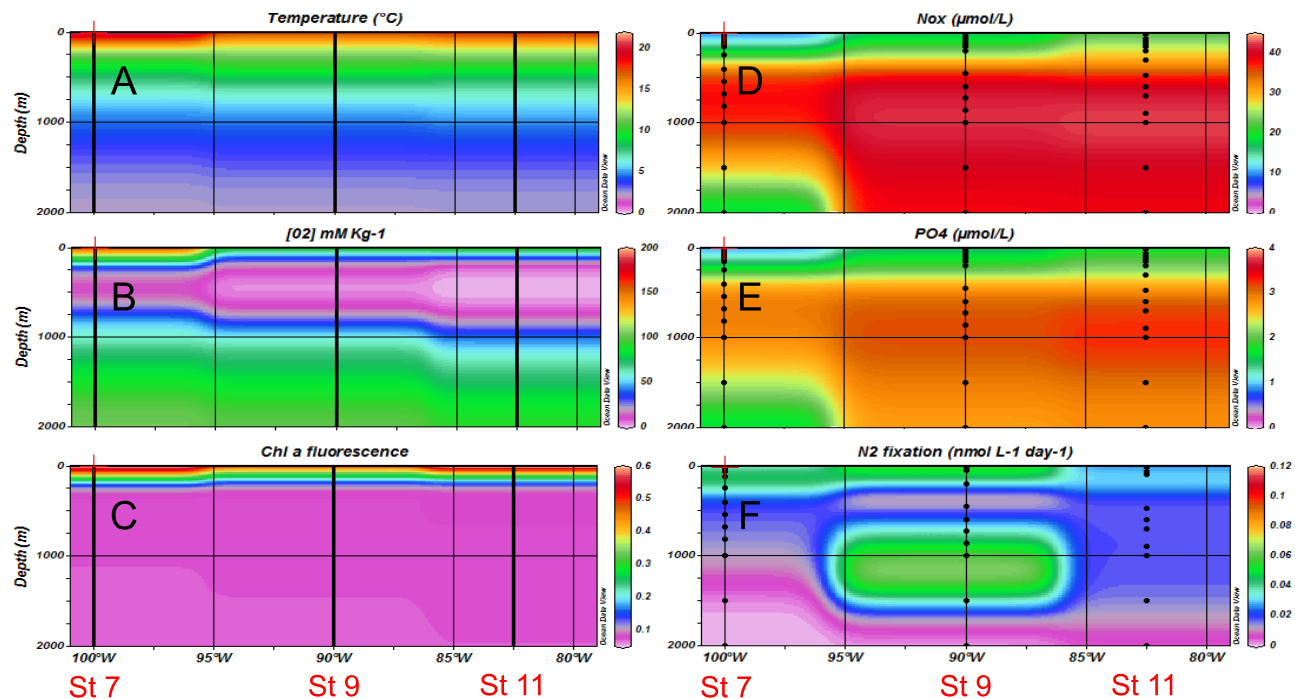
Sequencher 5.1 sequence analysis software (Gene Codes Corporation, Ann Arbor, MI) was used to remove vector contamination and low-quality reads from raw sequences. All resulting partial *nifH* sequences were imported into a curated *nifH* database (<http://pmc.ucsc.edu/~wwwzehr/research/database/>), translated into amino acid sequences, aligned to the existing hidden Markov model alignment using the Quick Align function, and nucleic acids were realigned to the aligned amino acids in the ARB software environment. Sequences generated from the nutrient addition bioassays were clustered at 97% nucleotide similarity using CD-HIT-EST [45]. Nucleic acid trees used the Jukes-Candor correction for branch length. Trees generated in ARB were exported into iTOL for the display of associated metadata. All partial *nifH* sequences recovered were submitted to Genbank under Accession numbers KF515738 - KF515848.

## Results

### Hydrographic and nutrient profiles

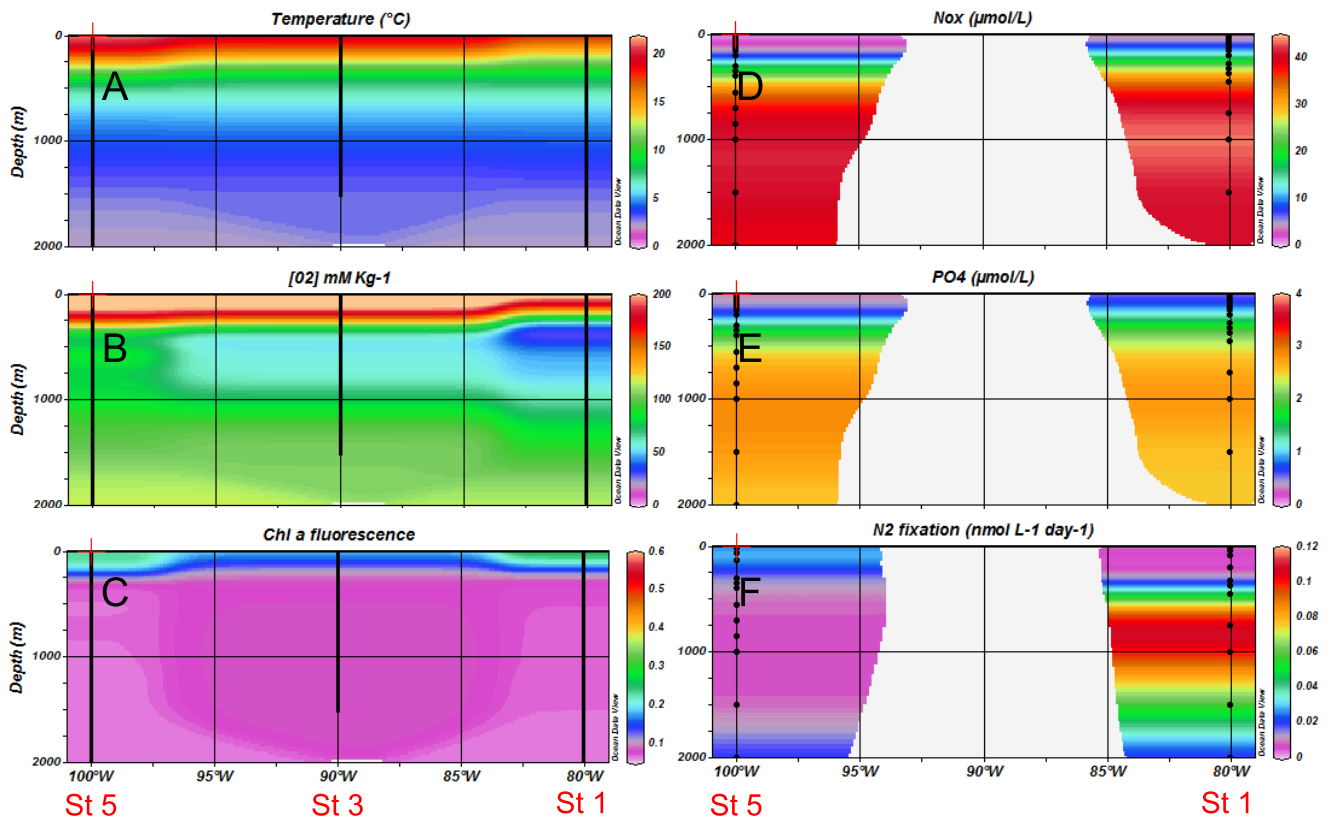
During both cruises, oceanographic conditions were consistent with active wind-driven upwelling off the coast of Northern Chile and Peru (Fig. 1), associated with a vertically and horizontally extensive OMZ (Fig. 2C and 3B). During the 2010 cruise (R/V Atlantis, El Niño), the zone of decreasing dissolved oxygen (oxycline) was located at ca. 70–100 m at stations 11 and 9, and suboxic conditions ( $[\text{O}_2] < 20 \mu\text{mol kg}^{-1}$  [46]) were reached at 125 m and 130 m respectively at these two stations. The suboxic zone expanded from 130–750 m at Station 11. During the 2011 cruise (Fig. 3B, R/V Melville, La Niña conditions), the oxycline was shallower (ca. 30–40 m) at stations 11 and 9 compared to 2010, and suboxic conditions were reached at 65 m at both stations. The suboxic zone expanded from 70–850 m at Station 11. On the southern transect (Stations 1, 3 and 5, Fig. 2D and 4B), the water column was well oxygenated during both cruises (ca.  $200 \mu\text{mol kg}^{-1}$ ) over the first 200 m, and  $\text{O}_2$  concentrations decreased with depth to reach minimum values of ca.  $80 \mu\text{mol kg}^{-1}$  at 300 m depth.

During the 2011 cruise, on the northern transect at Stations 7 and 9 (Fig. 3D), surface  $\text{NO}_x$  concentrations were ca.  $6 \mu\text{mol L}^{-1}$ , increased quickly with depth (nitracline ca. 50 m) to reach ca.  $37 \mu\text{mol L}^{-1}$  in the core of the OMZ. Close to the coast (Station 11), the nitracline was shallower (ca. 25 m) than that of the oceanic stations, and  $\text{NO}_x$  concentrations increased quickly to reach concentrations of ca.  $30\text{--}40 \mu\text{mol L}^{-1}$  in the core of the OMZ. On the southern transect (Fig. 4D),  $\text{NO}_x$  concentrations were ca.  $0.10 \mu\text{mol L}^{-1}$  over the first 100 m of the water column. The depth of the nitracline was 85 m and 130 m at Stations 1 and 5,



**Figure 3. Horizontal and vertical distributions of hydrological and biogeochemical parameters during the 2011 cruise (R/V Melville) – Northern transect ( $10^{\circ}\text{S}$ ).** (A) temperature, (B) dissolved oxygen, (C) chlorophyll a fluorescence, (D)  $\text{NO}_3^-$  concentrations, (E)  $\text{PO}_4^{3-}$  concentrations, (F) Mean  $\text{N}_2$  fixation rates ( $n = 3$ ). doi:10.1371/journal.pone.0081265.g003





**Figure 4. Horizontal and vertical distributions of hydrological and biogeochemical parameters during the 2011 cruise (R/V Melville) – Southern transect (20°S).** (A) temperature, (B) dissolved oxygen, (C) chlorophyll a fluorescence, (D) NO<sub>3</sub><sup>-</sup> concentrations, (E) PO<sub>4</sub><sup>3-</sup> concentrations, (F) Mean N<sub>2</sub> fixation rates (n = 3). doi:10.1371/journal.pone.0081265.g004

respectively, and concentrations increased progressively to reach values of ca. 40 µmol L<sup>-1</sup> below the oxygen minimum and down to 2000 m. PO<sub>4</sub> concentrations (Fig. 3E and 4E) followed the same trend as NO<sub>x</sub> in the northern transect, with surface concentrations of 0.40–0.60 µmol L<sup>-1</sup> and a shallower phosphocline near the coast (Station 11) compared to open ocean stations. In the southern transect, surface PO<sub>4</sub> concentrations were lower compared to those of the northern transect (0.03–0.30 µmol L<sup>-1</sup>) and the phosphocline was located deeper (ca. 150 m).

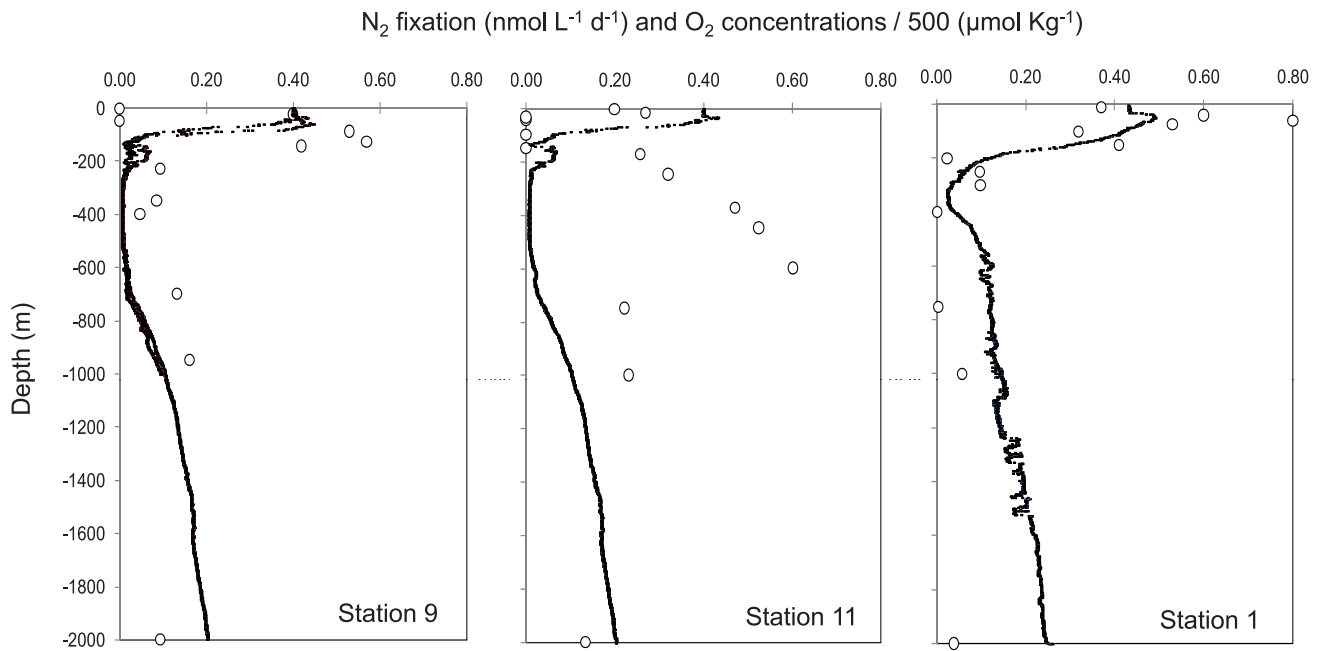
During both cruises, chlorophyll *a* fluorescence (Fig. 2E–F, 3C, 4C) was highest at stations located along the northern transect. It was much lower in 2010 compared to 2011, especially at stations nearest the coast of Peru on the Northern transect.

#### Vertical profiles (0 to 2000 m) of N<sub>2</sub> fixation

During the 2010 cruise, N<sub>2</sub> fixation was detected in 34 of 40 samples representing all three stations (Fig. 5). The overall range of rates measured over the cruise was from the detection limit to 0.80 nmol L<sup>-1</sup> d<sup>-1</sup>. The highest rates were measured in O<sub>2</sub> deficient waters at the oxyclines or in the core of the OMZ (Fig. 5), and reached values up to 0.57 nmol L<sup>-1</sup> d<sup>-1</sup>, 0.6 nmol L<sup>-1</sup> d<sup>-1</sup> and 0.53 nmol L<sup>-1</sup> d<sup>-1</sup> at Stations 1, 11 and 9, respectively. Below the OMZ, rates were always measurable and were at 1000 m depth 0.16 nmol L<sup>-1</sup> d<sup>-1</sup>, 0.23 nmol L<sup>-1</sup> d<sup>-1</sup> and 0.06 nmol L<sup>-1</sup> d<sup>-1</sup> at these stations. Integrated rates over the 2000 m water column were 155 µmol N m<sup>-2</sup> d<sup>-1</sup> at Station 1, 288 µmol N m<sup>-2</sup> d<sup>-1</sup> at Station 9, and 509 µmol N m<sup>-2</sup> d<sup>-1</sup> at Station 11 (Table 1). The average integrated rate over the cruise was 317 µmol N m<sup>-2</sup> d<sup>-1</sup>. Integrated N<sub>2</sub> fixation rates in the

aphotic zone accounted for 73 to 99% of the rates measured over the entire water column depending on the station. When considering all the stations, the average areal rate in the aphotic zone was 87% of the total rate over the entire water column (Table 1).

During the 2011 cruise, N<sub>2</sub> fixation rates were significantly greater than zero in 140 of the 216 measurements made (Fig. 3F, Fig. 6). The overall range of rates measured was from detection limit to 0.26 ± 0.12 nmol L<sup>-1</sup> d<sup>-1</sup>. In the northern transect (Fig. 3F, Fig. 6), the highest rates of N<sub>2</sub> fixation over the vertical profiles were measured in the oxycline as in 2010, and mean rates (n = 3) reached 0.15 ± 0.13 nmol L<sup>-1</sup> d<sup>-1</sup> at Station 7 and 0.19 ± 0.28 nmol L<sup>-1</sup> d<sup>-1</sup> at Station 9 at the oxycline. At station 11, the highest rates were found in surface waters (0.22 ± 0.19 nmol L<sup>-1</sup> d<sup>-1</sup>) but rates at the oxycline were also measurable (0.06 ± 0.03 nmol L<sup>-1</sup> d<sup>-1</sup>). Below the OMZ (ca. 400–2000 m), rates were also measurable and ranged from 0.00 ± 0.01 to 0.21 ± 0.13 nmol L<sup>-1</sup> d<sup>-1</sup>, the highest rates being measured at station 9 at 1000 m depth. In the southern transect (Fig. 4F, Fig. 6), the rates ranged from 0.00 ± 0.01 to 0.26 ± 0.12 nmol L<sup>-1</sup> d<sup>-1</sup>, the highest rates being observed at Station 1 just below the second oxycline at 750 m depth. At this station, aphotic rates were measurable at 450 m, 750 m, 1000 m and 1500 m depth. Integrated rates over the 2000 m water column ranged from 24 ± 14 µmol m<sup>-2</sup> d<sup>-1</sup> at Station 5 to 118 ± 87 µmol m<sup>-2</sup> d<sup>-1</sup> at Station 1 (Table 1). The average integrated rates over the 2011 cruise were 64 µmol m<sup>-2</sup> d<sup>-1</sup>. Integrated N<sub>2</sub> fixation rates over the aphotic zone accounted for



**Figure 5. Vertical profiles (0–2000 m) of N<sub>2</sub> fixation rates (nmol L<sup>-1</sup> d<sup>-1</sup>) during the 2010 cruise (R/V Atlantis).** Open circles: individual N<sub>2</sub> fixation measurements at each depth. Black line: dissolved oxygen concentrations (μmol Kg<sup>-1</sup>) divided by 500 to fit on the same scale. doi:10.1371/journal.pone.0081265.g005

90% of total rates measured over the entire water column (Table 1) over the cruise.

#### Nutrient addition bioassays in the core of the OMZ

During the 2010 cruise, nutrient concentrations in the core of the OMZ (140 to 450 m) where experiments were performed ranged from 24.0 to 37.0 μmol L<sup>-1</sup> for NO<sub>x</sub> and 1.20 and 3.00 μmol L<sup>-1</sup> for PO<sub>4</sub><sup>3-</sup> (data not shown). Mean N<sub>2</sub> fixation rates in control bottles at Stations 5, 7 and 11 were 0.12±0.02, 0.16±0.04 and 0.17±0.02 nmol N L<sup>-1</sup> d<sup>-1</sup>, respectively (n=3; Fig. 7). At the 2 most oceanic Stations 5 and 7, glucose amendments did not result in any significant increase of N<sub>2</sub>

fixation (p>0.05). At Station 11 near the Peruvian coast, glucose amendments resulted in a significant (p<0.05) increase in N<sub>2</sub> fixation rates by a factor of 3.2, to reach 0.56±0.04 nmol N L<sup>-1</sup> d<sup>-1</sup> (Fig. 7).

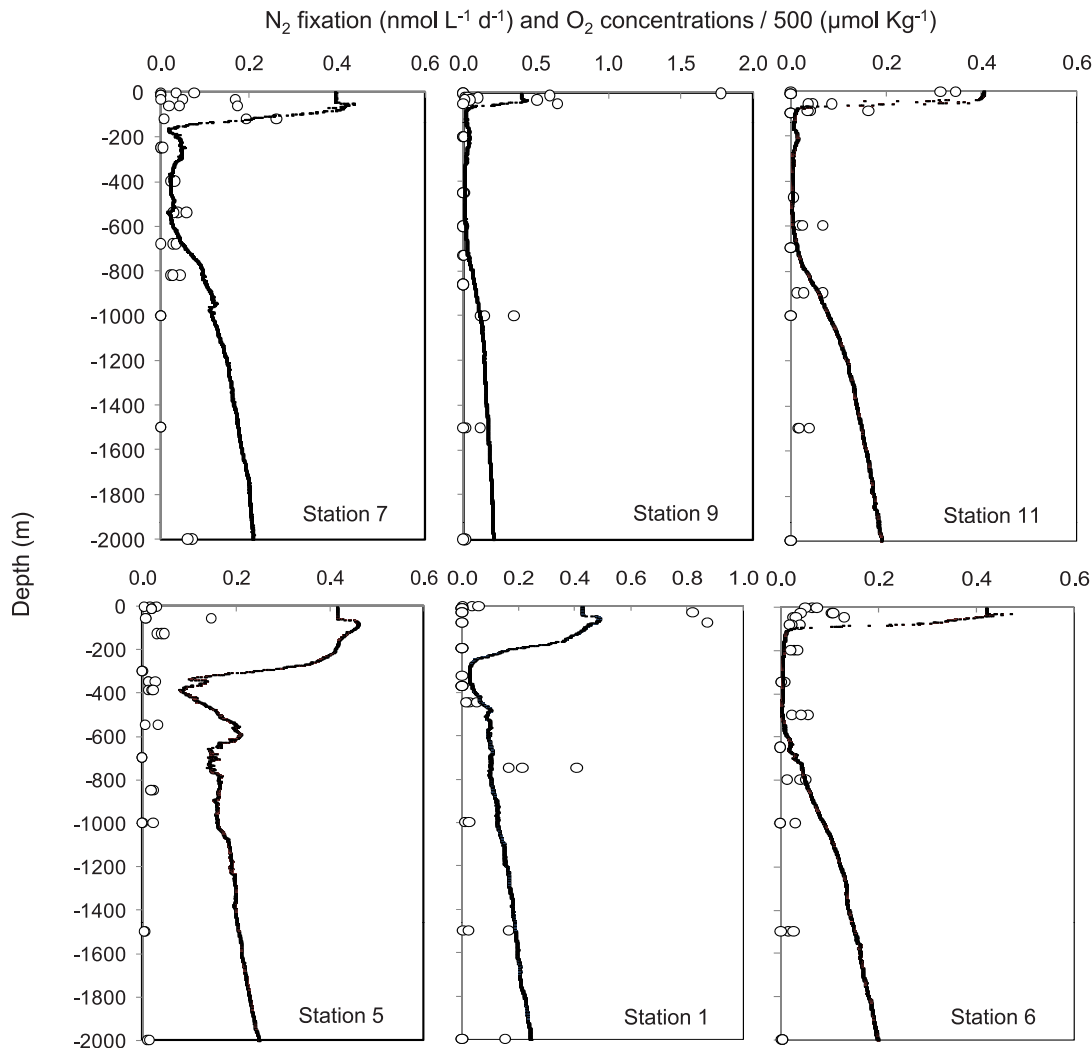
During the 2011 cruise, nutrient concentrations in the core of the OMZ (320 to 475 m) where experiments were performed ranged between 33.12 and 38.72 μmol L<sup>-1</sup> for NO<sub>x</sub> and from 2.33 to 3.03 μmol L<sup>-1</sup> for PO<sub>4</sub>. Mean N<sub>2</sub> fixation rates in the control bottles ranged from 0.00±0.01 at Station 11 to 0.07±0.01 and 0.07±0.04 nmol N L<sup>-1</sup> d<sup>-1</sup> at Stations 9 and 5, respectively (n=3; Fig. 8). At Stations 1 and 9, N<sub>2</sub> fixation rates were significantly (p<0.05) stimulated by simple carbohydrate additions

**Table 1. Areal N<sub>2</sub> fixation rates (μmol N m<sup>-2</sup> d<sup>-1</sup>) calculated from measurements performed in the euphotic and aphotic zones during the 2010 and 2011 cruises.**

Station	Total 0–2000 m (μmol N m <sup>-2</sup> d <sup>-1</sup> )	Euphotic (μmol N m <sup>-2</sup> d <sup>-1</sup> )	Aphotic (μmol N m <sup>-2</sup> d <sup>-1</sup> )
<b>2010</b>			
Station 9	288	49	239
Station 11	509	8	501
Station 1	155	71	84
<b>Average</b>	<b>317</b>	<b>43 (13%)</b>	<b>275 (87%)</b>
<b>2011</b>			
Station 7	50±39	10±10	40±29
Station 9	101±79	09±04	92±74
Station 11	25±17	04±02	21±14
Station 5	24±14	05±05	19±09
Station 1	118±87	01±01	117±86
<b>Average</b>	<b>64</b>	<b>06 (10%)</b>	<b>58 (90%)</b>

Uncertainties are derived from the standard errors of triplicate measurements for the 2011 cruise. doi:10.1371/journal.pone.0081265.t001





**Figure 6. Vertical profiles (0–2000 m) of N<sub>2</sub> fixation rates (nmol L<sup>-1</sup> d<sup>-1</sup>) during the 2011 cruise (R/V Melville).** Open circles: individual N<sub>2</sub> fixation measurements at each depth. Black line: dissolved oxygen concentrations (µmol Kg<sup>-1</sup>) divided by 500 to fit on the same scale. doi:10.1371/journal.pone.0081265.g006

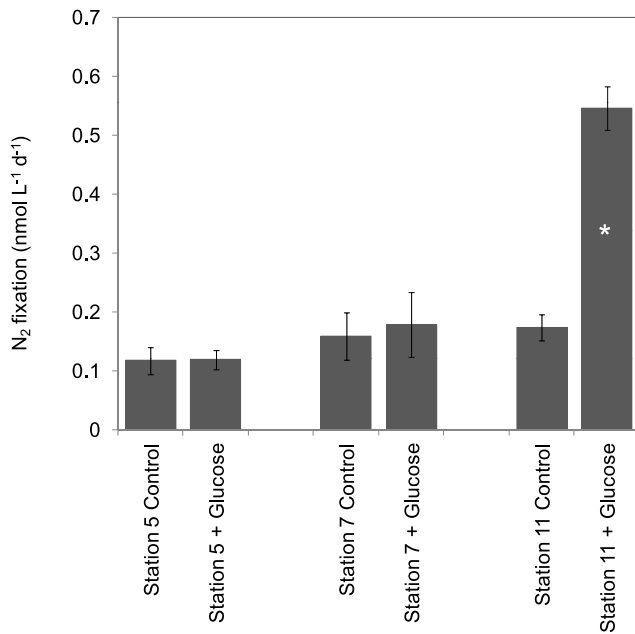
by a factor of 5.5 and 4.6, to reach  $0.14 \pm 0.07$  and  $0.30 \pm 0.30$  nmol N L<sup>-1</sup> d<sup>-1</sup>, respectively (Fig. 8). At all stations, the addition of amino acids resulted in a significant ( $p < 0.05$ ) increase in N<sub>2</sub> fixation rates, by a factor of 4 to 7. The highest rates were reached at Station 9 after AA additions with  $0.27 \pm 0.08$  nmol N L<sup>-1</sup> d<sup>-1</sup>. ATP addition never resulted in any significant increase of N<sub>2</sub> fixation rates ( $p > 0.05$ ) and NO<sub>3</sub><sup>-</sup> additions never resulted in any decrease of N<sub>2</sub> fixation rates ( $p > 0.05$ ). However, at Station 7, NO<sub>3</sub><sup>-</sup> additions resulted in a significant ( $p < 0.05$ ) increase of N<sub>2</sub> fixation by a factor of 7 to  $0.07 \pm 0.02$  nmol N L<sup>-1</sup> d<sup>-1</sup>.

#### Phylogenetic characterization of diazotrophs in 2010 glucose addition bioassays

A full phylogenetic characterization of diazotrophs in the upper 200 m of the ETSP water column was performed during the same cruises and is detailed in a companion paper [42]. In this study we report the complementary phylogenetic characterization of samples from the core of the OMZ (Fig. 8). Partial *nifH* sequences recovered during deep glucose addition bioassays during 2010 at Stations 5, 7 and 11, indicated that diazotrophs were present in the

deep waters of the OMZ. The diazotrophic community was comprised of non-cyanobacterial diazotrophs affiliated with *nifH* clusters 1K (predominantly comprised of  $\alpha$ -proteobacteria), 1G (predominantly comprised of  $\gamma$ -proteobacteria), and 3 (sulfate reducing genera of the  $\delta$ -proteobacteria as well *Clostridium* spp., *Vibrio* spp, etc.) (Fig. 9). Clear differences exist between OMZ diazotrophic community composition at each station. The Station 5 community was dominated by *nifH* cluster 1K sequences, many of which are closely related to a phylotype (94–97% nucleic acid similarity) originally reported at Hydrostation S (North Atlantic) from a depth of 1000 m (BT5167A10 (DQ481253) [47]), although a few putative  $\gamma$ -proteobacterial (1G) sequences were also recovered that affiliated with  $\gamma$ ETSP3, a cluster recovered from the ETSP [42]. Although the lowest number of total sequences was recovered from Station 7, they were mainly affiliated with cluster 1G, along with a few 1K sequences. In contrast, clone libraries from Station 11 were dominated by cluster 3 sequences, along with a few 1G sequences, but no 1K sequences (Fig. 9).

Despite being prevalent in clone libraries, both  $\alpha$ ETSP1 and cIII-ETSP groups were not detected at abundances great enough to quantify using Taqman<sup>®</sup> qPCR assays during the course of



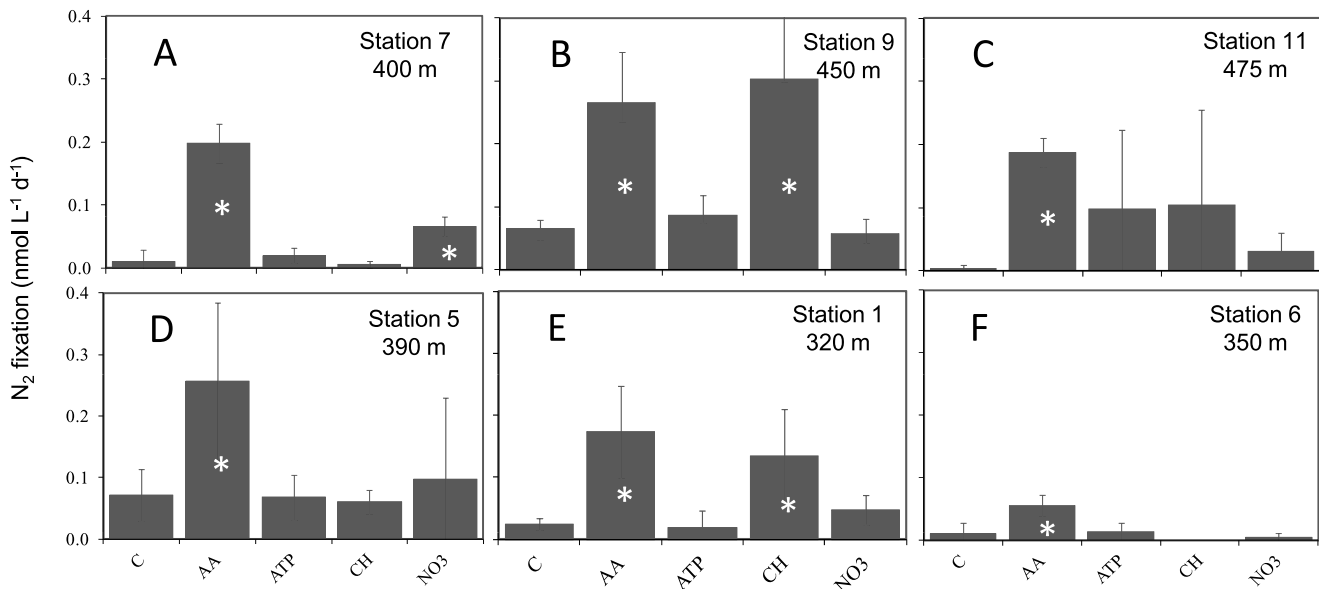
**Figure 7. Effect of glucose additions on mean N<sub>2</sub> fixation rates (n=3) during the Atlantis cruise (2010).** Data from bioassay experiments performed in the OMZ at Stations 5, 7 and 11. The error bars represent the standard deviation of triplicate incubations. Treatment means were compared using the 2-tailed non parametric Mann-Whitney mean comparison test (n=3,  $\alpha=0.05$ , unpaired samples). Means that are significantly different ( $p<0.05$ ) from the control are labeled with an asterisk.  
doi:10.1371/journal.pone.0081265.g007

these experiments (see Figure S1 in File S1). Because the abundances of these targets did not increase as a result of nutrient amendments, it is difficult to speculate whether any of them were responsible for the increased N<sub>2</sub> fixation rates we measured after glucose addition.

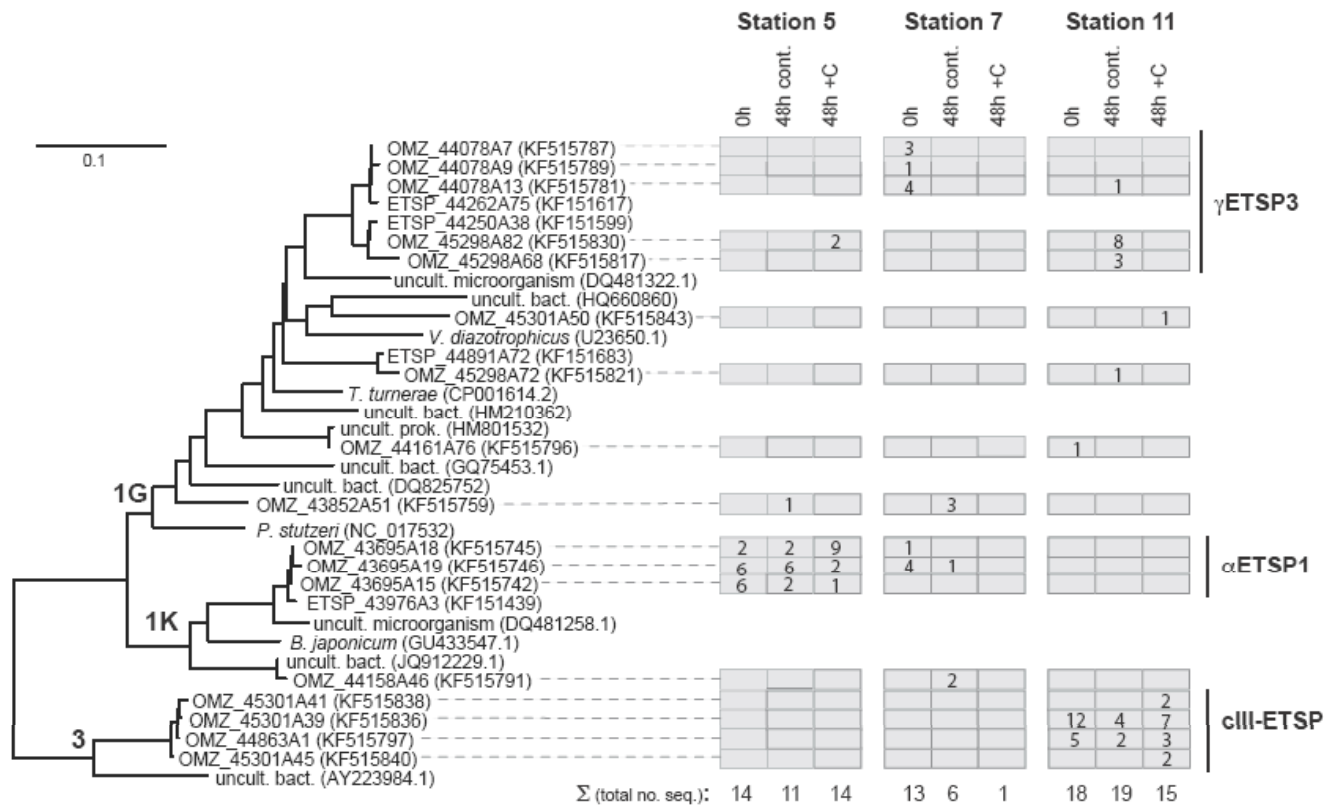
## Discussion

### Active N<sub>2</sub> fixation in deep and NO<sub>3</sub>-rich waters of the ETSP

In this study, we measured during 2 consecutive years N<sub>2</sub> fixation in surface waters affected by the OMZ, but reveal that N<sub>2</sub> fixation below the euphotic zone is more important: 87 and 90% of total areal N<sub>2</sub> fixation were measured in the aphotic zone in 2010 and 2011, respectively. In these aphotic layers, volumetric N<sub>2</sub> fixation rates were relatively low ( $<1.00$  nmol N L<sup>-1</sup> d<sup>-1</sup>), but when integrated over the whole aphotic layer, they ranged from 84 to 501  $\mu\text{mol N m}^{-2} \text{d}^{-1}$  in 2010 and from  $19\pm 09$  to  $117\pm 86$   $\mu\text{mol N m}^{-2} \text{d}^{-1}$  in 2011 (Table 1). In 2011, rate measurements were replicated (triplicates) and calculations performed very carefully using a real T0 for every depth. These 2011 measurements are thus more reliable than those measured in 2010. These measurements in aphotic waters add new information compared previously published studies [26,28] in the area. The hypotheses explaining the persistence of N<sub>2</sub> fixation in these high NO<sub>x</sub> (ca. 40  $\mu\text{mol L}^{-1}$ ) environments are largely developed in the companion paper [28]. First, fixed N loss processes occur in this region [31,48], creating a deficit of N relative to P, which is potentially favorable for N<sub>2</sub> fixation [24]. In particular, anammox removes NH<sub>4</sub><sup>+</sup>, which has an immediate inhibitory effect on N<sub>2</sub> fixation [49]. Secondly, N<sub>2</sub> fixation is an anaerobic process [50] due to the irreversible inactivation of the nitrogenase enzyme by O<sub>2</sub> [51]. It is possible that the low O<sub>2</sub> concentrations in the OMZ and down to 2000 m contribute to the protection of nitrogenase [52], decrease the energy cost of maintaining intracellular



**Figure 8. Effects of nutrient additions on mean N<sub>2</sub> fixation rates (n=3) during the Melville cruise (2011) (C: Control, AA: Amino acids, CH: Carbohydrates).** Data from bioassay experiments performed in the OMZ at (A) Stations 7, (B) Station 9, (C) Station 11, (D) Station 5, (E) Station 1, and (F) Station 6 during the Melville cruise (2011). The error bars represent the standard deviation of triplicate incubations. Treatment means were compared using the 2-tailed non parametric Mann-Whitney mean comparison test (n=3,  $\alpha=0.05$ , unpaired samples). Means that were significantly different ( $p<0.05$ ) from the control are labeled with an asterisk.  
doi:10.1371/journal.pone.0081265.g008



**Figure 9. Results from the molecular analyses of the 2010 glucose amendment experiments.** Neighbor joining tree of partial *nifH* nucleotide sequences. Nodes are labeled with *nifH* cluster designations according to the convention established [74]. The number of sequences recovered from stations and treatments for each phylotype are indicated in boxes to the right of the tree. doi:10.1371/journal.pone.0081265.g009

anaerobiosis [53], and thus facilitate N<sub>2</sub> fixation. Finally, redox conditions in the OMZ favor the equilibrium formation of the most bioavailable form of iron Fe<sup>2+</sup> [54], which could help to support the high Fe requirements of nitrogenase [16,17]. For these reasons, OMZs and deeper waters may represent favorable ecological niches for N<sub>2</sub> fixation, as shown in this study.

### Potential impacts on N budgets in the ETSP

Aphotic N<sub>2</sub> fixation is currently ignored in oceanic N budgets based on biogeochemical rate measurements. However, this dataset indicates that rates in aphotic waters of the ETSP are of the same order of magnitude than those commonly measured in the tropical and sub-tropical NO<sub>3</sub><sup>-</sup>-depleted surface ocean (Table 2), where N<sub>2</sub> fixation has commonly been studied. The potential significance of the N<sub>2</sub> fixation rates measured in our study can be evaluated by comparing them with fixed N losses via denitrification and anammox measured in the same region. N losses in the ETSP have been estimated to range from 9 to 25 Tg N yr<sup>-1</sup> (Table 3, [31,55,56,57]) in the upwelling area extending 175 km offshore, and 1860 km along the Peruvian-Chilean coast with an area extant of 3.26 × 10<sup>11</sup> m<sup>2</sup> [31,56]. If we consider the same spatial extent for N<sub>2</sub> fixation, this process could potentially add 0.04 to 0.9 Tg N yr<sup>-1</sup> (Table 3), counterbalancing 0.16 to 10% of the estimated N loss processes in this area (calculations have been performed only using numbers from the 2011). However, the anammox and denitrification measurements mentioned above [31] were performed under conditions of excess

substrate availability and therefore represent maximum estimates of N loss rates. In contrast, the <sup>15</sup>N<sub>2</sub> bubble method used to quantify N<sub>2</sub> fixation [58] may underestimate rates [38,39].

Secondly, denitrification and anammox are restricted to subsurface suboxic or anoxic waters [59], whereas N<sub>2</sub> fixation is not. Further, denitrification and anammox appear to be restricted to the coastal upwelling system within ca. 175 km of the Peruvian-Chilean coast (the few data available at open ocean stations indicate that N loss processes were below detection limit during the 2010 cruise, Hamersley et al., (Pers. Com.)). N<sub>2</sub> fixation in the ETSP is active over a much greater spatial extent than N loss processes. If we consider the spatial extent of the N<sub>2</sub> fixation measurements in the ETSP covered by our cruises (2.23 × 10<sup>12</sup> m<sup>2</sup>), we estimate that N<sub>2</sub> fixation could potentially add 0.3 to 1 Tg N to the system in this area and therefore could compensate for up to 11% of the estimated N loss processes in the upwelling region of the ETSP (Table 3) (without taking into account methodological under- or overestimations). These estimates of N gains are the minimum ones calculated by taking into account only the 2011 cruise. If we take into account the 2010 cruise, N<sub>2</sub> fixation could potentially compensate up to 0.3 to 7 Tg N to the system (Table 3) (i.e. up to 78% of N losses). N<sub>2</sub> fixation in deep waters of the ETSP may be a significant source of N for the ETSP, and needs to be taken into account in future N budgets. Further coupled measurements between N gain and loss processes at the same stations/depths need to be performed to better constrain the magnitude of N gains in this region.

**Table 2.** Examples of published studies showing the range of oceanic N<sub>2</sub> fixation areal rates measured in some contrasting oceanic environments.

Location	Areal rates ( $\mu\text{mol m}^{-2} \text{d}^{-1}$ )	Integration depth (m)	Reference
Hypoxic basin (Southern California Bight)	150	885	[37]
ETSP coastal OMZ	7–190	120	[26]
ETSP	0–148	150–200	[28]
ETSP subtropical gyre	12–190	150–200	[14]
Eastern North Pacific gyre	520	mixed layer	[20]
North Atlantic	59–898	15 ( <i>Trichodesmium</i> bloom)	[3]
ETSP aphotic zone	19–501	2000	<i>This study</i>

doi:10.1371/journal.pone.0081265.t002

### Effects of nutrients on N<sub>2</sub> fixation

The diazotrophic community of the ETSP characterized in this study, as well as in a companion study [42] is comprised of an assemblage of non-cyanobacterial diazotrophs, and little can be inferred about their metabolism from partial *nifH* sequences. However, we performed nutrient addition bioassays using molecules representing common labile components of the dissolved organic matter pool in marine waters (simple carbohydrates, amino-acids and ATP), which shed some light on nutrient control of N<sub>2</sub> fixation in the core of the OMZ. Our results indicated that simple carbohydrate additions significantly stimulated N<sub>2</sub> fixation at stations located nearest the coast during both cruises and at Station 9 during the 2011 cruise (Figs. 7, 8). In OMZs, organic C is largely supplied by vertical flux of planktonic production from shallower layers or by horizontal transport [60]. Thus this supply of organic C is not constant but rather episodic, which could explain why N<sub>2</sub> fixation appears so variable in space, in time, and between cruises and years, as reported in the present study and by [26]. This seems to be the case for N loss processes as well, since organic C supply has been correlated with regional denitrification [60] and anammox [31,61] rates in OMZs. Ward et al. [62] demonstrated that denitrification rates were significantly stimulated in the OMZ of the ETSP by organic C additions. To our knowledge our study is the first designed to study the response of diazotrophs to nutrient additions in the OMZ. In surface waters, significant stimulation of N<sub>2</sub> fixation rates by glucose additions have been reported during the same cruise at Station 9 [28]. A significant stimulation of bacterial production after glucose amendments in surface waters of the Chilean upwelling system have also been reported [63]. Finally, in surface waters of the southwest Pacific [64], reported a significant increase of *nifH* gene copies of unicellular diazotrophic cyanobacteria such as Group A (UCYN-A) and *Crocospaera* after glucose and mannitol additions, hypothesizing that this capacity may allow conservation of energy

by rapid uptake and recycling of sugars. However, it has to be noted that the large variability in the response to carbohydrates addition (high standard deviation at Station 11 for example) could be explained by the fact that it may be coincidental whether the taxa that benefit from the enrichment possess the *nifH* gene.

Because the organic C molecules tested here are also energy-rich molecules easily entering catabolic pathways, one could interpret our results to be indicative of limitation either by energy or by assimilative C availability. However, in our experiments N<sub>2</sub> fixation was not stimulated by ATP additions at any station, indicating that C and not energy might have been the proximate limiting factor. In some oligotrophic P-limited environments, ATP is also a source of P for bacteria and uptake rates of ATP exceed those of glucose [65]; however, in OMZs, P is not limiting relative to N, which may further restrict the ability of ATP to stimulate N<sub>2</sub> fixation rates in our bioassays. In contrast, the addition of free amino acids stimulated N<sub>2</sub> fixation at all stations tested; this has also been shown in aphotic oxygenated waters of the Red Sea [66]. Amino acids are a source of both C and N, and it has been suggested that it is energetically advantageous for microbes to use preformed compounds such as amino acids rather than glucose as C sources [67]. In terrestrial legume-rhizobium symbioses, the diazotrophic bacteria assimilate amino acids such as glutamic acid provided by the host, which facilitate both dicarboxylate oxidation and ammonium assimilation into asparagine [68]. In *Azospirillum* sp., additions of glutamic acid also stimulated N<sub>2</sub> fixation activity [69] by providing a C and energy source to the diazotrophs, while N was still provided via N<sub>2</sub> fixation. It may be that similar nutrient assimilation dynamics are occurring in diazotrophs in the ETSP OMZ.

Ambient NO<sub>x</sub> concentrations were high (ca. 30–40  $\mu\text{mol L}^{-1}$ ) at all stations where nutrient additions were performed, and NO<sub>3</sub><sup>-</sup> additions (8  $\mu\text{mol L}^{-1}$ ) never resulted in N<sub>2</sub> fixation inhibition at any station. As the metabolic potential of diazotrophs present in

**Table 3.** Comparison between estimated fixed N losses via denitrification and anammox and fixed N gains via N<sub>2</sub> fixation (estimated from the 0–2000 m depth integrated rates measured in this study) in the ETSP.

Area considered (m <sup>2</sup> )	N losses (Tg.yr <sup>-1</sup> )	N gains (based on 2011 cruise) (Tg.yr <sup>-1</sup> )	N gains (based on 2010+2011 cruise) (Tg.yr <sup>-1</sup> )
*3.26 × 10 <sup>11</sup>	**9–25	0.04–0.9	0.05–1.1
2.23 × 10 <sup>12</sup>	9–25	0.3–1	0.3–7

\*Upwelling area extending 175 km from, and 1860 km along the Peruvian-Chilean coast [31,56].

\*\*Estimates from [31,55,56,57].

doi:10.1371/journal.pone.0081265.t003

the OMZ have not yet been fully characterized, we do not know if they possess genes for reduction and assimilation of NO<sub>3</sub><sup>-</sup> or NO<sub>2</sub><sup>-</sup>. Detailed studies at the single cell level would be needed to characterize the metabolism of these organisms and understand why microbes fix N<sub>2</sub> in the presence of so much NO<sub>3</sub><sup>-</sup>. In addition to possible energy and C, N and P sources derived from molecules like amino acids, carbohydrates or ATP, electron sources and donors are also very important to know for characterizing the physiology of the diazotrophs present in the ETSP. Molecules like O<sub>2</sub>, NO<sub>3</sub><sup>-</sup> and less favorably SO<sub>4</sub><sup>2-</sup> are common electron acceptor and they are used for different types of respirations like aerobic respiration, or anaerobic denitrification and sulfate reduction. These different respiratory pathways potentially supporting N<sub>2</sub> fixation are performed by organisms with different physiology which each have their own environmental sensitivities for fixing N<sub>2</sub>.

### Phylogenetic characterization of diazotrophs

Our characterization of the diazotrophic community in the core of the OMZ revealed the presence of potential N<sub>2</sub>-fixing heterotrophs based on the presence of the *nifH* gene. We did not detect the cyanobacterial diazotrophs commonly found in other regions of the open ocean; in contrast, most of the *nifH* genes amplified from the OMZ clustered with  $\alpha$ -,  $\gamma$ - and  $\delta$ -proteobacteria. This result is consistent with the observations of Turk-Kubo [42] in the upper 200 m of the ETSP water column, where 96% of sequences were also affiliated with proteobacteria. Based on these results, and other studies conducted in the ETSP and the South Pacific Gyre [14,26,70], it is clear that the ETSP diazotrophic community is different from other well-studied tropical and subtropical oceans such as that of the North Pacific, North Atlantic and Indian Oceans. The cyanobacterial diazotrophic phylotypes commonly found at high abundances in these other ocean provinces appear to be either sporadically present at low abundances (i.e. *Trichodesmium*, UCYN-A), or undetected altogether (i.e. UCYN-B, diatom-diazotroph associations) in the ETSP.

The amplification of diverse non-cyanobacterial *nifH*-containing organisms from OMZ waters in the ETSP affiliated with *nifH* clusters 1K, 1G and 3, is consistent with the findings of other studies conducted in anaerobic waters [26,36,71] and in abyssopelagic waters [47]. However, the results from this study underscore the difficulty inherent in identifying the diazotrophic community responsible for N<sub>2</sub> fixation rates. It is important to note that *nifH* cluster 1K sequences have been reported as contaminants in many studies, including a study in the ETSP [42]. However, none of the sequences recovered here had greater than 90% amino acid similarity and 83% nucleic acid similarity to reported contaminants. Nevertheless, as a result of the use of highly degenerate primers and nested PCR cycles necessary to amplify this important but low-abundance gene target, contamination must always be considered as a source for heterotrophic diazotroph sequences, whether from PCR and DNA extraction reagents or from sampling or handling procedures, despite the screening of PCR and reagent blank controls as in this study.

Furthermore, although it is clear that a diverse assemblage of non-cyanobacterial *nifH*-containing organisms are present in the OMZ of the ETSP, the best methodologies currently available to characterize dominant members of the diazotrophic community (PCR amplification using degenerate *nifH* primers) often identify organisms present at extremely low levels when targeted using quantitative approaches (i.e. qPCR; Fig. S1 in File S1) [42,47,71]. This, in turn, makes it difficult to argue that these organisms are capable of fixing N<sub>2</sub> at cell-specific rates great enough to account for measured bulk rates. An analysis of the expected N<sub>2</sub> fixation

rates based on abundances and plausible cell-specific N<sub>2</sub> fixation rates in the ETSP discussed in [42] indicate that these proteobacteria are unlikely to be responsible for all the measured bulk rates and therefore other N<sub>2</sub>-fixing organisms could be responsible for a part of N<sub>2</sub> fixation in this region but may remain uncharacterized. Identifying which organisms are actively transcribing *nifH* using techniques such as reverse transcription (RT)-qPCR might provide more insight into which diazotrophic taxa are actively fixing nitrogen. However, the challenge of identifying which organisms are important N<sub>2</sub>-fixers remains the same when designing qPCR primers from sequences derived from RT-PCR based clone libraries, and are further convoluted by potentially low transcript abundances per cell and/or the timing of sampling with respect to diel changes in *nifH* expression (even in the case of heterotrophs).

### Conclusions

This study provides one of the first estimates of N<sub>2</sub> fixation rates in aphotic waters of the ETSP. It reveals that N<sub>2</sub> fixation in aphotic environments is the largest contributor to total areal N<sub>2</sub> fixation in ETSP. N<sub>2</sub> fixation in high [NO<sub>3</sub><sup>-</sup>] environments remains an enigma as it requires an additional energetic cost relative to NO<sub>3</sub><sup>-</sup> or NH<sub>4</sub><sup>+</sup>. Further physiological studies are needed to understand the physiological regulation of N<sub>2</sub> fixation, especially on newly discovered diazotrophic organisms. Contrary to N<sub>2</sub> fixation performed in euphotic layer which sustains new primary production [3], aphotic N<sub>2</sub> fixation may sustain organic matter remineralization. These new sources of N could potentially compensate for as much as 78% of the estimated N loss processes in ETSP, indicating that they need to be taken into account in marine N budgets. Phylogenetic studies confirm the presence of diazotrophs in the deep waters on the OMZ, which are distinct from cyanobacterial phylotypes commonly found in surface oligotrophic waters of the tropical ocean. Organic and inorganic nutrient addition bioassays reveal that amino acids and simple carbohydrates stimulate N<sub>2</sub> fixation in the core of the OMZ, and the episodic supply of these nutrients from upper layers may explain the large temporal and spatial variability of N<sub>2</sub> fixation in the ETSP. Research on marine heterotrophic N<sub>2</sub> fixation is at its beginning and significant progress needs to be made in the refinement of the methods to estimate planktonic N<sub>2</sub> fixation in OMZs (<sup>15</sup>N<sub>2</sub> bubble method versus <sup>15</sup>N<sub>2</sub>-enriched seawater) from bulk measurements to single cells analysis. The <sup>15</sup>N-enriched seawater method should be coupled to oxygen-free and trace metal-clean procedures to provide more accurate estimates. Progress also needs to be made in the characterization of the community responsible for N<sub>2</sub> fixation in these deep waters, as well as the control of their population dynamics by the supply of organic matter. Estimates of global N<sub>2</sub> fixation based on field measurements [5,72] are presently lower than geochemically-based (nutrient stoichiometry and isotopic ratio) estimates [73]. Taking into account deep N<sub>2</sub> fixation might help to resolve some of this discrepancy. However, progress also needs to be made in the quantification of N loss processes, as recent studies indicate that they may be less sensitive to oxygen than previously thought [59], further complicating the N budget in the ETSP. In future studies, N gain and loss measurements need to be coupled in space and time to further resolve the N budget in the ETSP.

### Supporting Information

**File S1 Supporting methods, Table S1, and Figure S1.** (DOCX)

## Acknowledgments

The authors thank the captains and crews from the R/V Atlantis and R/V Melville for outstanding shipboard operations and anonymous referees for constructive comments.

## References

- Falkowski PG, Barber RT, Smetacek V (1998) Biogeochemical Controls and Feedbacks on Ocean Primary Production. *Science* 281: 200–206.
- Karl D, Letelier R, Tupas L, Dore J, Christian J, et al. (1997) The role of nitrogen fixation in biogeochemical cycling in the subtropical North Pacific Ocean. *Nature* 388: 533–538.
- Capone DG, Burns JA, Michaels AF, Montoya J, Subramaniam A, et al. (2005) Nitrogen fixation by *Trichodesmium* spp.: An important source of new nitrogen to the tropical and sub-tropical North Atlantic Ocean. *Global Biogeochemical Cycles* 19: 786–787.
- Capone DG, Zehr JP, Paerl HW, Bergman B, Carpenter EJ (1997) *Trichodesmium*, a globally significant marine cyanobacterium. *Science* 276: 1221–1229.
- Mahaffey C, Michaels AF, Capone DG (2005) The conundrum of marine N<sub>2</sub> fixation. *American Journal of Science* 305: 546–595.
- Carpenter EJ, Montoya JP, Burns JA, Mulholland M, Subramaniam A, et al. (1999) Extensive bloom of a N<sub>2</sub>-fixing diatom/cyanobacterial association in the Tropical Atlantic Ocean. *Mar Ecol Prog Ser* 185: 273–283.
- Zehr JP, Waterbury JB, Turner PJ, Montoya JP, Omoregie E, et al. (2001) Unicellular cyanobacteria fix N<sub>2</sub> in the subtropical North Pacific Ocean. *Nature* 412: 635–638.
- Zehr JP, Bench SR, Carter BJ, Hewson I, Niazi F, et al. (2008) Globally Distributed Uncultivated Oceanic N<sub>2</sub>-Fixing Cyanobacteria Lack Oxygenic Photosystem II. *Science* 322: 1110–1112.
- Needoba JA, Foster RA, Sakamoto C, Zehr JP, Johnson KS (2007) Nitrogen fixation by unicellular diazotrophic cyanobacteria in the temperate oligotrophic North Pacific Ocean. *Limnology and Oceanography* 52: 1317–1327.
- Zehr JP, Mellon MT, Zani S (1998) New nitrogen-fixing microorganisms detected in oligotrophic oceans by amplification of nitrogenase (*nifH*) genes. *Applied and Environmental Microbiology* 64: 3444–3450.
- Zehr JP, Jenkins BD, Short SM, Steward GF (2003) Nitrogenase gene diversity and microbial community structure: a cross-system comparison. *Environmental Microbiology* 5: 539–554.
- Farnelid H, Riemann L (2008) Heterotrophic N<sub>2</sub>-fixing bacteria: overlooked in the marine nitrogen cycle?. In: Couto NG, editor. *Nitrogen Fixation Research Progress*. New York: Nova Science Publishers. pp. 409–423.
- Riemann L, Farnelid H, Steward GF (2010) Nitrogenase genes in non-cyanobacterial plankton: prevalence, diversity and regulation in marine waters. *Aquatic Microbial Ecology* 61: 235–247.
- Halm H, Lam P, Ferdelman TG, Lavik G, Dittmar T (2012) Heterotrophic organisms dominate nitrogen fixation in the South Pacific Gyre. *ISME J* 6: 1238–1249.
- Codispoti LA (2007) An oceanic fixed nitrogen sink exceeding 400 Tg Na-1 vs the concept of homeostasis in the fixed-nitrogen inventory. *Biogeosciences* 4: 233–253.
- Berman-Frank I, Quigg A, Finkel ZV, Irwin AJ, Haramaty L (2007) Nitrogen-fixation strategies and Fe requirements in cyanobacteria. *Limnology and Oceanography* 52: 2260–2269.
- Kustka AB, Carpenter EJ, Sañudo-Wilhelmy S, Sunda WG (2003) Iron requirements for N<sub>2</sub> and NH<sub>4</sub><sup>+</sup> supported growth in cultures of *Trichodesmium* (IMS 101): comparison with nitrogen fixation rates and Fe: C ratios of field populations. *Limnology and Oceanography* 48: 1869–1884.
- Mills MM, Ridame C, Davey M, La Roche J, Geider JG (2004) Iron and phosphorus co-limit nitrogen fixation in the eastern tropical North Atlantic. *Nature* 429: 292–294.
- Karl DM, Letelier R, Tupas L, Dore J, Christian J, et al. (1997) The role of nitrogen fixation in biogeochemical cycling in the subtropical North Pacific Ocean. *Nature* 388: 533–538.
- Montoya JP, Holl CM, Zehr JP, Hansen A, Villareal T, et al. (2004) High rates of N<sub>2</sub>-fixation by unicellular diazotrophs in the oligotrophic Pacific. *Nature* 430: 1027–1031.
- Dupouy C, Petit M, Dandonneau Y (1988) Satellite detected cyanobacteria bloom in the southwestern tropical Pacific. Implication for nitrogen fixation. *International Journal of Remote Sensing* 8: 389–396.
- Montoya JP, Holl CM, Zehr JP, Hansen A, Villareal TA, et al. (2004) High rates of N<sub>2</sub> fixation by unicellular diazotrophs in the oligotrophic Pacific Ocean. *Nature* 430: 1027–1031.
- Bonnet S, Biegala IC, Dutrieux P, Slemmons LO, Capone DG (2009) Nitrogen fixation in the western equatorial Pacific: Rates, diazotrophic cyanobacterial size class distribution, and biogeochemical significance. *Global Biogeochemical Cycles* 23: GB3012.
- Deutsch C, Sarmiento JL, Sigman DM, Gruber N, Dunne JP (2007) Spatial coupling of nitrogen inputs and losses in the ocean. *Nature* 445: 163–167.

## Author Contributions

Conceived and designed the experiments: SB JD. Performed the experiments: SB JD KT TM OG RH. Analyzed the data: SB JD KT JZ DC. Contributed reagents/materials/analysis tools: SB JD KT OG. Wrote the paper: SB.

- Landolfi A, Dietze H, Koeve W, Oschlies A (2013) Overlooked runaway feedback in the marine nitrogen cycle: the vicious cycle. *Biogeosciences* 10: 1351–1363.
- Fernandez C, Farias L, Ulloa O (2011) Nitrogen Fixation in Denitrified Marine Waters. *PLoS ONE* 6: e20539.
- Moutin T, Karl DM, Duhamel S, Rimmelin P, Raimbault P, et al. (2008) Phosphate availability and the ultimate control of new nitrogen input by nitrogen fixation in the tropical Pacific Ocean. *Biogeosciences* 5: 95–109.
- Dekazemacker J, Bonnet S, Grosso O, Moutin T, Bressac M, et al. (2013) Evidence of active dinitrogen fixation in surface waters of the eastern tropical south pacific during El niño and La niña events and evaluation of its potential nutrient controls. *Global Biogeochemical Cycles* 27:768–779.
- Zehr J, Capone DG (1996) Problems and promises of assaying the genetic potential for nitrogen fixation in the marine environment. *Microbial ecology* 32: 263–281.
- Goering JJ (1968) Denitrification in the oxygen minimum layer of the eastern tropical Pacific Ocean. *Deep Sea Research* 15: 157–164.
- Hamersley MR, Lavik G, Woebken D, Rattray J, Lam P, et al. (2007) Anaerobic ammonium oxidation in the Peruvian oxygen minimum zone. *Limnology and Oceanography* 52: 923–933.
- Kuyppers MMM, Slijkers AO, Lavik G, Schmid M, Jorgensen BB, et al. (2003) Anaerobic ammonium oxidation by anammox bacteria in the Black Sea. *Nature* 422: 608–611.
- Helm I, Jalukse L, Vilbaste M, Leito I (2009) Micro-Winkler titration method for dissolved oxygen concentration measurement. *Analytica Chimica Acta* 648: 167–173.
- Aminot A, Kerouel R (2007) Dosage automatique des nutriments dans les eaux marines. Cedex France: Éditions Qua. 187 p.
- Montoya JP, Voss M, Kahler P, Capone DG (1996) A simple, high-precision, high-sensitivity tracer assay for N<sub>2</sub> fixation. *Applied and Environmental Microbiology* 62: 986–993.
- Hamersley MR, Turk KA, Leinweber A, Gruber N, Zehr JP, et al. (2011) Nitrogen fixation within the water column associated with two hypoxic basins in the Southern California Bight. *Aquatic Microbial Ecology* 63: 193–205.
- Mohr W, Groszkopf T, Wallace DRW, LaRoche J (2010) Methodological underestimation of oceanic nitrogen fixation rates. *PLoS ONE* 9: 1–7.
- Wilson ST, Böttjer D, Church MJ, Karl DM (2012) Comparative assessment of nitrogen fixation methodologies conducted in the oligotrophic North Pacific ocean. *Applied and Environmental Microbiology* 78(18): 6516–6523.
- Groszkopf T, Mohr W, Baustian T, Schunck H, Gill Dea (2012) Doubling of marine dinitrogen-fixation rates based on direct measurements. *Nature* 488: 361–364.
- Bonnet S, Grosso O, Moutin T (2011) Planktonic Dinitrogen Fixation along a longitudinal gradient across the Mediterranean Sea during the stratified period (BOUM cruise). *Biogeosciences* 8: 2257–2267.
- Turk-Kubo K, Achilles KM, Serros TRC, Ochiai M, Montoya J, et al. (2012) Nitrogenase (*nifH*) gene expression in diazotrophic cyanobacteria in the Tropical North Atlantic in response to nutrient amendments. *Frontiers for microbiology*. doi: 10.3389/fmicb.2012.00386.
- Turk KA, Karamchandani M, Capone DG, Zehr J (2013) The paradox of marine heterotrophic nitrogen fixation: Abundances of heterotrophic diazotrophs do not account for nitrogen fixation rates in the Eastern Tropical South Pacific. *Environmental Microbiology*. In revision.
- Zehr J, McReynolds LA (1989) Use of degenerate oligonucleotides for amplification of the *nifH* gene from the marine cyanobacterium *Trichodesmium thiebautii*. *Applied and Environmental Microbiology* 55: 2522–2526.
- Zani S, Mellon MT, Collier JL, Zehr JP (2000) Expression of *nifH* genes in natural microbial assemblages in Lake George, NY detected with RT-PCR. *Applied and Environmental Microbiology* 66: 3119–3124.
- Huang Y, Niu B, Gao Y, Fu L, Li W (2010) CD-HIT Suite: a web server for clustering and comparing biological sequences. *Bioinformatics* 26: 680–682.
- Paulmier A, Ruiz-Pino D (2008) Oxygen Minimum Zones (OMZs) in the modern ocean. *Progress In Oceanography* 80: 113–128.
- Hewson I, Moisaner PH, Achilles KM, Carlson CA, Jenkins BD, et al. (2007) Characteristics of diazotrophs in surface to abyssopelagic waters of the Sargasso Sea. *Aquatic Microbial Ecology* 46: 15–30.
- Lam P, Lavik G, Jensens MM, van de Vossenberg J, Schmid M, et al. (2009) Revising the nitrogen cycle in the Peruvian oxygen minimum zone. *Proceedings of the National Academy of Sciences* 106: 4752–4757.
- Mulholland MR, Capone DG (2001) Stoichiometry of nitrogen and carbon utilization in cultured populations of *Trichodesmium* IMS101: Implications for growth. *Limnology and Oceanography* 46: 436–443.



50. Postgate J (1998) Nitrogen Fixation, 3rd edition. Cambridge: Cambridge University Press.
51. Burgess BK, Lowe DJ (1996) Mechanism of molybdenum nitrogenase. *Chemical Reviews* 96: 2983–3011.
52. Fay P (1992) Oxygen relations of nitrogen fixation in cyanobacteria. *Microbiological Reviews* 56: 340–373.
53. Großkopf T, LaRoche J (2012) Direct and indirect costs of dinitrogen fixation in *Crocospaera watsonii* WH8501 and possible implications for the nitrogen cycle. *Frontiers in microbiology* 3.
54. Moffett J, Goepfert TJ, Naqvi SWA (2007) Reduced iron associated with secondary nitrite maxima in the Arabian Sea. *Deep Sea Research Part I: Oceanographic Research Papers* 54: 1341–1349.
55. Deutsch C, Gruber N, Key RM, Sarmiento JL, Ganachaud A (2001) Denitrification and N<sub>2</sub> fixation in the Pacific Ocean. *Global Biogeochemical Cycles* 15: 483–506.
56. Codispoti LA, Packard TT (1980) Denitrification rates in the eastern tropical South Pacific. *Journal of marine research* 38: 453–477.
57. Lipschultz FS, Wofsy C, Ward BB, Codispoti LA, Friedrich G, et al. (1990) Bacterial transformations of inorganic nitrogen in the oxygen-deficient waters of the eastern tropical South Pacific Ocean. *Deep Sea Research, Part A* 37: 1513–1541.
58. Montoya JP, Voss M, Kaehler P, Capone DG (1996) A simple, high precision tracer assay for dinitrogen fixation. *Applied and Environmental Microbiology* 62: 986–993.
59. Kalvelage T, Jensen MM, Contreras S, Revsbech NP, Lam P, et al. (2011) Oxygen Sensitivity of Anammox and Coupled N-Cycle Processes in Oxygen Minimum Zones. *PLoS ONE* 6.
60. Liu KK, Kaplan IR (1984) Denitrification rates and availability of organic matter in marine environments. *Earth and Planetary Science Letters* 68: 88–100.
61. Kalvelage T, Lavik G, Lam P, Contreras S, Arteaga L, et al. (2013) Nitrogen cycling driven by organic matter export in the South Pacific oxygen minimum zone. *Nature geoscience* 6: 228–234.
62. Ward BB, Tuit CB, Jayakumar A, Rich JJ, Moffett J, et al. (2008) Organic carbon, and not copper, controls denitrification in oxygen minimum zones of the ocean. *Deep Sea Research I* 55: 1672–1683.
63. Van Wambeke F, Bonnet S, Moutin T, Raimbault P, Alarcon G, et al. (2008) Factors limiting heterotrophic bacterial production in the southern Pacific Ocean. *Biogeosciences* 5: 833–845.
64. Moisander PH, Zhang RF, Boyle EA, Hewson I, Montoya J, et al. (2012) Analogous nutrient limitations in unicellular diazotrophs and *Prochlorococcus* in the South Pacific Ocean. *The ISME Journal* 6: ISME Journal 6: 733–744.
65. Alonso-Saez L, Gasol JM (2007) Seasonal Variations in the Contributions of Different Bacterial Groups to the Uptake of Low-Molecular-Weight Compounds in Northwestern Mediterranean Coastal Waters. *Applied and Environmental Microbiology* 73: 3528–3535.
66. Rahav E, Bar-Zeev E, Ohayon S, Elifantz H, Belkin N, et al. (2013) Dinitrogen fixation in aphotic oxygenated marine environments. *Frontiers in microbiology*. doi: 10.3389/fmicb.2013.00227.
67. Del Giorgio PA, Cole JJ (1998) Bacterial growth efficiency in natural aquatic systems. *Annu Rev Ecol Syst* 29: 503–541.
68. Ludwig EM, Hsieh AHF, Bourdés A, Findlay K, Allaway D, et al. (2003) Amino-acid cycling drives nitrogen fixation in legume–rhizobium symbiosis. *Nature* 422: 722–726.
69. Hartmann A, Fu H, Burris RH (1988) Influence of amino acids on nitrogen fixation ability and growth of *Azospirillum* spp. *Applied and Environmental Microbiology* 54: 87–93.
70. Bonnet S, Guieu C, Bruyant F, Prasil O, Van Wambeke F, et al. (2008) Nutrient limitation of primary productivity in the Southeast Pacific (BIOSCOPE cruise). *Biogeosciences* 5: 215–225.
71. Farnelid H, Bentzon-Tilia M, Andersson AF, Bertilsson S, Jøts G, et al. (2013) Active nitrogen-fixing heterotrophic bacteria at and below the chemocline of the central Baltic Sea. *ISME Journal* 7: 1413–1423.
72. Carpenter EJ, Capone DG (1992) Significance of *Trichodesmium* blooms in the marine nitrogen cycle. In: Carpenter EJ, Capone DG, Rueter JG, editors. *Marine Pelagic Cyanobacteria: Trichodesmium and Other Diazotrophs*. New York: Springer. pp. 211–217.
73. Gruber N, Sarmiento JL (1997) Global patterns of marine nitrogen fixation and denitrification. *Global Biogeochemical Cycles* 11: 235–266.
74. Zehr JP, Crumbliss LL, Church MJ, Omoregie EO, Jenkins BD (2003) Nitrogenase genes in PCR and RT-PCR reagents: implications for studies of diversity of functional genes. *Biotechniques* 35: 996–1005.